

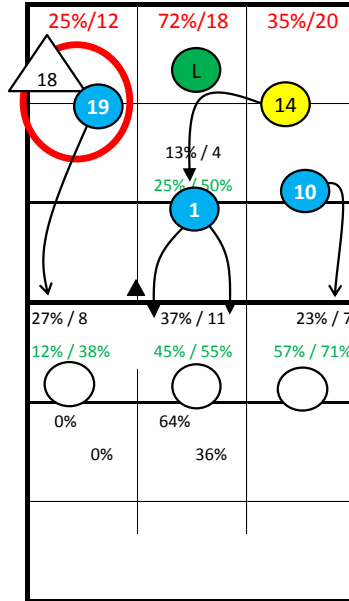
Roster

1 Veselý	MB
3 Mach	MB
4 Pfeffer	Lib
5 Král	MB
7 Holubec	MB
8 Habr	Set
9 Bartos	Opp
10 Finger	Lib
11 Krystof	Out
12 Vašíček	Out
13 Baránek	Out
14 Bartos	Set
16 Fila	Out
17 Konečný	Set

Czech Republic 2015

9: Jumpfloat at Position 1

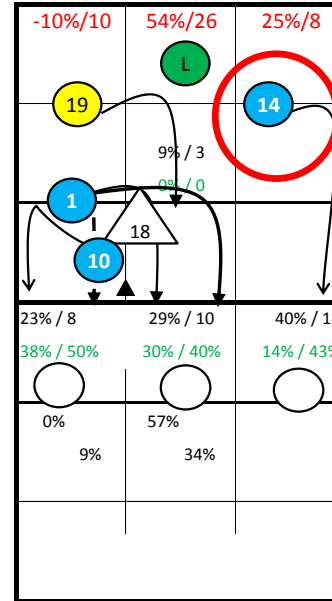
18: Jumpserve at Position 1



S1

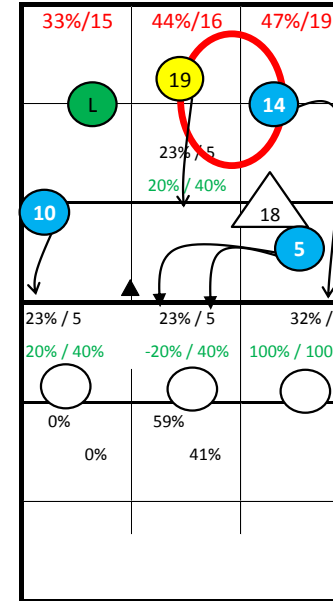
13: Jumpserve at Position 1

19: Jumpfloat at Position 5



S6

1: Jumpserve at Position 6



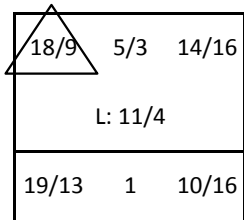
S5

S1

S6

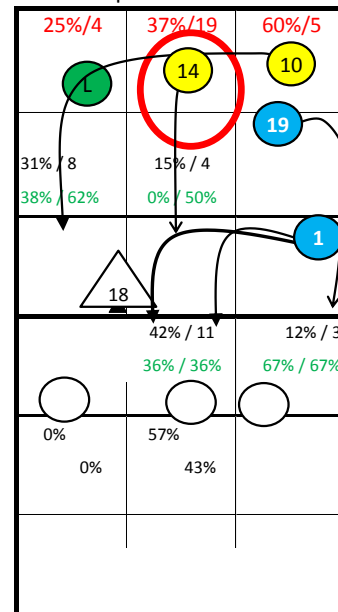
S5

Starting Lineup:



3: Jumpfloat at Position 1

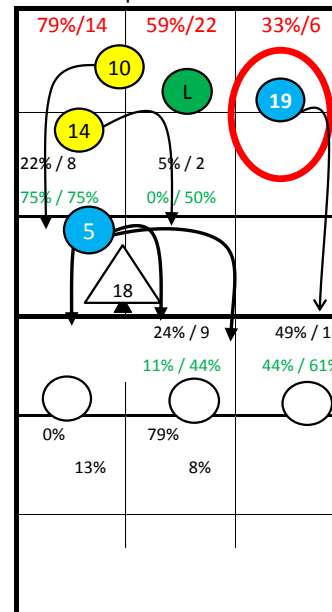
5: Jumpserve at Position 6



S2

16: Jumpserve at Position 1

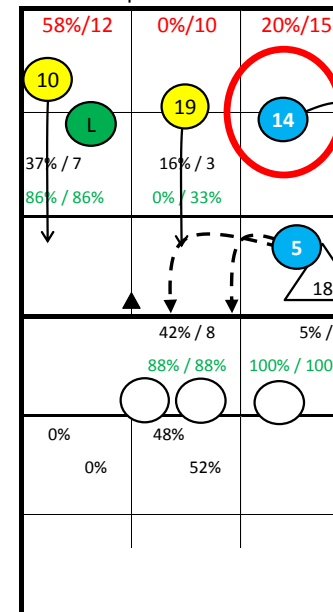
14: Jumpfloat at Position 1



S3

16: Jumpserve at Position 1

10: Jumpserve at Position 6



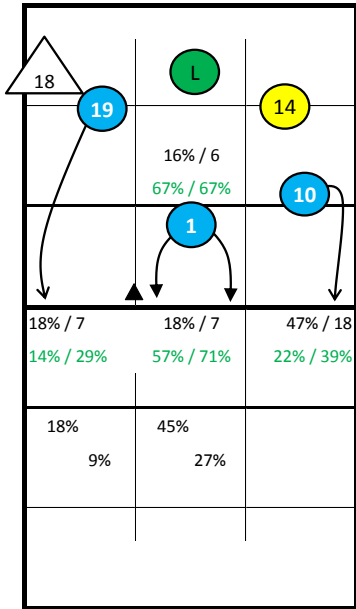
S4

S4

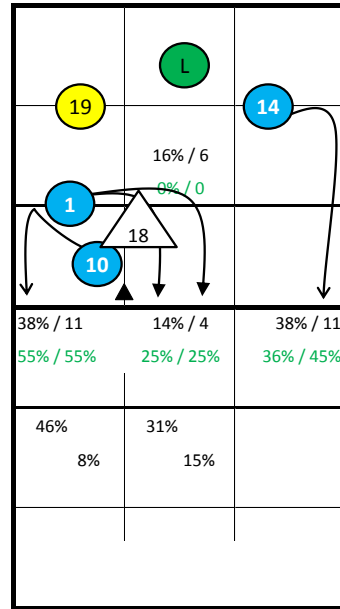
S3

S2

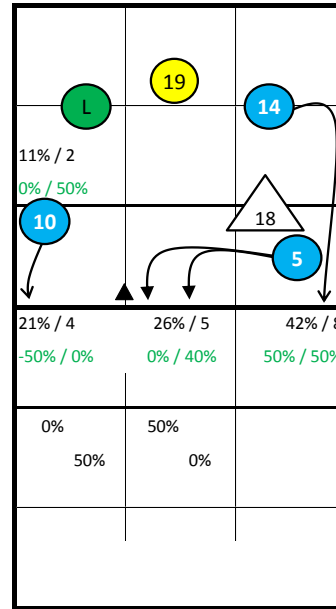
Czech Republic 2015 -



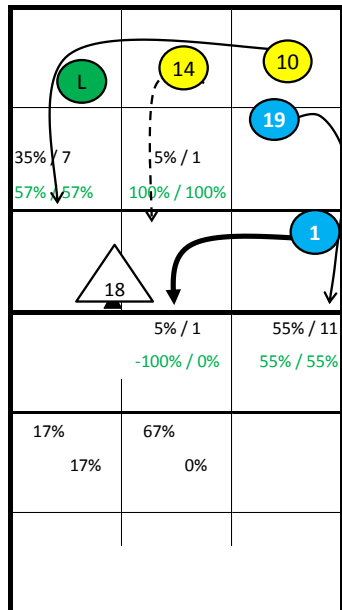
S1



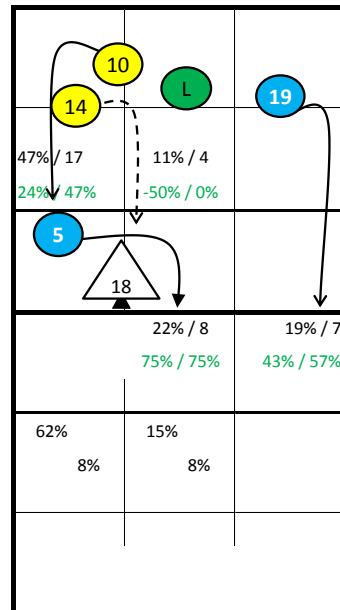
S6



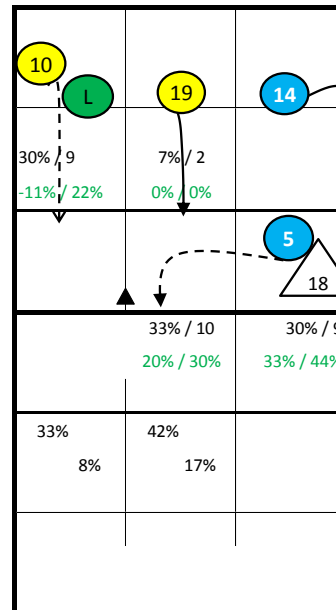
S5



S2



S3



S4

Czech Republic 2015 - all Statistics

pId Set	Points					Serve								Reception										Attack											
	pts	P/s	easy=	all=	W-L	Σ	=	-	+	#	=%	#%	eff%	Σ	in %	=	/	-	+	#	=/%	+#%	#%	eff%	Σ	in %	=	/	!	+	#	=/%	#%	eff%	
Czech Republic 2015	30	464	15,5	208	555	-91	666	115	255	261	35	17%	5%	27%	542		40	11	236	150	105	9%	47%	19%	38%	736		64	64	44	117	352	17%	48%	30%
1 Veselý	22	43	2,0	26	51	-8	70	21	20	27	2	30%	3%	11%	0											47	6%	0	1	4	5	26	2%	55%	53%
3 Mach	17	16	0,9	6	21	-5	48	2	20	22	4	4%	8%	50%	4	1%	1	0	1	1	1	25%	50%	25%	25%	18	2%	3	1	2	2	7	22%	39%	17%
4 Pfeffer	11	0			10	-10	0							37	7%	3	0	20	7	7	8%	38%	19%	30%	0										
5 Král	20	37	1,9	22	54	-17	56	12	22	19	3	21%	5%	18%	1	0%	0	0	1	0	0	0%	0%	0%	0%	39	5%	6	6	2	2	18	31%	46%	15%
7 Holubec	9	18	2,0	5	16	2	20	3	11	6	0	15%	0%	15%	1	0%	0	0	1	0	0	0%	0%	0%	0%	17	2%	0	2	1	1	12	12%	71%	59%
8 Habr	2	1	0,5	2	4	-3	8	2	1	5	0	25%	0%	38%	0											1	0%	0	0	0	0	1	0%	100%	100%
9 Bartos	10	3	0,3	4	11	-8	35	1	18	16	0	3%	0%	43%	0											2	0%	0	0	1	0	1	0%	50%	50%
10 Finger	13	73	5,6	24	47	26	36	10	10	12	4	28%	11%	17%	0											122	17%	14	11	4	17	59	20%	48%	28%
11 Krystof	21	0			25	-25	0							97	18%	3	2	34	30	28	5%	60%	29%	55%	0										
12 Vašíček	0	0				0	0							0											0										
13 Baránek	15	55	3,7	25	55	0	53	19	9	21	4	36%	8%	11%	59	11%	6	5	23	13	12	19%	42%	20%	24%	85	12%	6	11	4	14	46	20%	54%	34%
14 Bartos	14	37	2,6	11	42	-5	44	2	25	17	0	5%	0%	34%	95	18%	11	2	30	29	23	14%	55%	24%	41%	68	9%	8	4	4	12	32	18%	47%	29%
16 Fila	12	26	2,2	19	44	-18	39	10	18	11	0	26%	0%	3%	68	13%	7	1	38	19	3	12%	32%	4%	21%	64	9%	7	6	3	8	26	20%	41%	20%
17 Konečný	20	75	3,8	31	75	0	69	16	15	31	7	23%	10%	32%	3	1%	0	0	2	1	0	0%	33%	0%	33%	148	20%	14	15	9	27	65	20%	44%	24%

	Block						Defense						Freeball					Set		
	Σ	=	+	#	#%	eff%	Σ	=	/-!	+#	+#%	eff%	Σ	err	bad	god	eff%	Σ	=	eff%
Czech Republic 2015	366	153	40	77	21%	-4%	474	106	214	154	32%	10%	46	4	42	0	-13%	689	9	53%
1 Veselý	66	27	10	15	23%	0%	22	2	11	9	41%	32%	0					12	0	-8%
3 Mach	24	7	3	5	21%	8%	19	6	9	4	21%	-11%	2	1	1	0	-50%	6	0	-17%
4 Pfeffer	0						42	7	21	14	33%	17%	4	0	4	0	0%	20	0	-5%
5 Král	62	27	5	16	26%	-8%	16	3	11	2	13%	-6%	1	0	1	0	0%	5	0	0%
7 Holubec	27	8	1	6	22%	0%	5	3	2	0	0%	-60%	0					3	0	0%
8 Habr	2	2	0	0	0%	-100%	6	0	4	2	33%	33%	0					39	0	77%
9 Bartos	10	3	2	2	20%	10%	27	5	13	9	33%	15%	0					173	2	56%
10 Finger	27	10	1	10	37%	7%	23	2	13	8	35%	26%	12	0	12	0	0%	5	0	0%
11 Krystof	0						83	22	28	33	40%	13%	3	0	3	0	0%	25	0	12%
12 Vašíček	0						0						0					0		
13 Baránek	16	7	2	5	31%	19%	21	6	6	9	43%	14%	3	0	3	0	0%	9	0	0%
14 Bartos	23	12	5	5	22%	13%	16	4	7	5	31%	6%	3	1	2	0	-33%	4	0	0%
16 Fila	12	7	2	0	0%	-33%	35	5	21	9	26%	11%	2	1	1	0	-50%	5	1	-20%
17 Konečný	26	14	2	3	12%	-23%	55	16	18	21	38%	9%	7	0	7	0	0%	8	0	25%

pId Set played Sets
 P/s Points per Set
 pts Points
 easy= easy errors (serve, net contact, ...)
 all= all errors
 W-L points - errors
 Σ sum of all events
 in % in percent of all team events

Czech Republic 2015 - Attack-Statistic

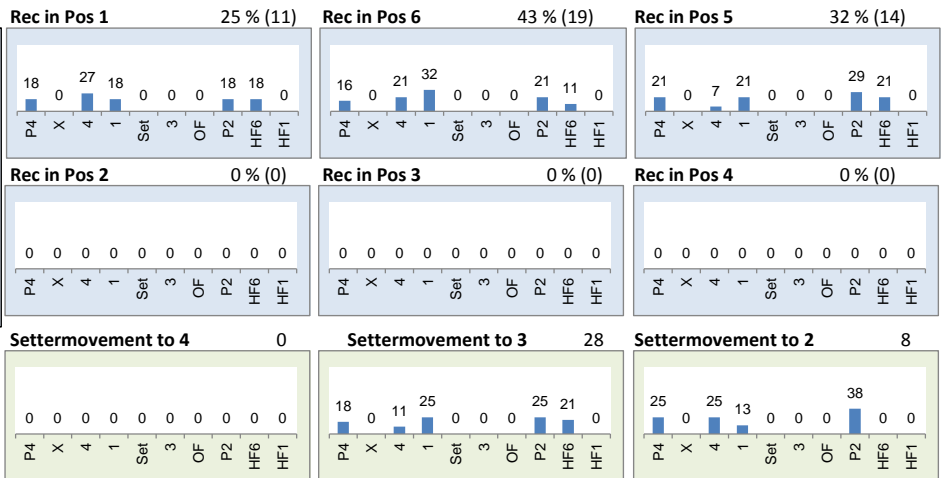
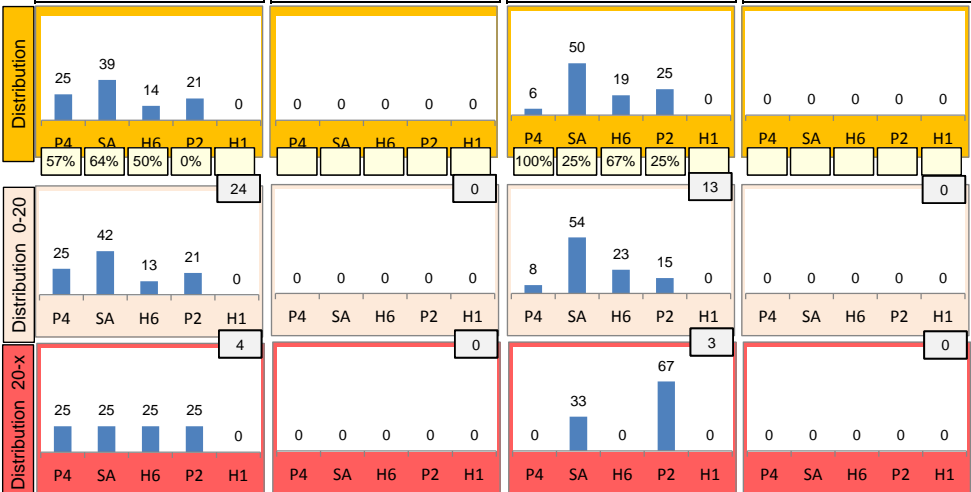
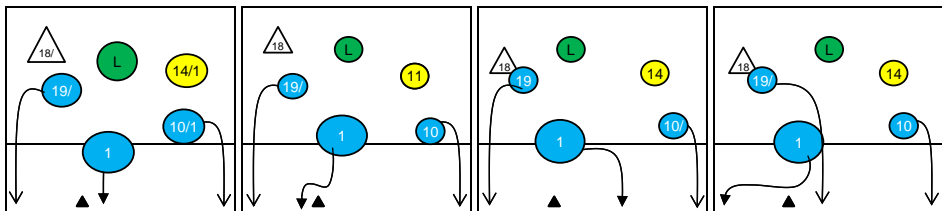
	K1 & K2 Attacks								K1 All Attacks								K2 Attacks								K1 aft R other Ply				K1 after own Rec			
	Σ	in %	=	/	#	=/%	#%	eff	Σ	in %	=	/	#	=/%	#%	eff	Σ	in %	=	/	#	=/%	#%	eff	sum	#	#%	eff	sum	#	#%	eff
Czech Republic 2015	686		60	64	329	18%	48%	30%	450		41	39	227	18%	50%	33%	236		19	25	102	19%	43%	25%	357	185	52%		31	14	45%	
17 Konečný	145	21%	13	15	63	19%	43%	24%	87	19%	6	8	41	16%	47%	31%	58	25%	7	7	22	24%	38%	14%	87	41	47%	31%	0			
10 Finger	119	17%	14	11	59	21%	50%	29%	77	17%	11	4	39	19%	51%	31%	42	18%	3	7	20	24%	48%	24%	77	39	51%	31%	0			
13 Baránek	85	12%	6	11	46	20%	54%	34%	52	12%	3	9	28	23%	54%	31%	33	14%	3	2	18	15%	55%	39%	46	25	54%	30%	6	3	50%	33%
14 Bartos	66	10%	8	4	32	18%	48%	30%	39	9%	7	2	21	23%	54%	31%	27	11%	1	2	11	11%	41%	30%	24	13	54%	29%	15	8	53%	33%
16 Fila	60	9%	7	6	24	22%	40%	18%	38	8%	4	3	18	18%	47%	29%	22	9%	3	3	6	27%	27%	0%	29	15	52%	31%	9	3	33%	22%
1 Veselý	43	6%	0	1	23	2%	53%	51%	41	9%	0	1	21	2%	51%	49%	2	1%	0	0	2	0%	100%	100%	41	21	51%	49%	0			
5 Král	34	5%	4	6	18	29%	53%	24%	30	7%	3	5	17	27%	57%	30%	4	2%	1	1	1	50%	25%	-25%	30	17	57%	30%	0			
3 Mach	15	2%	2	1	6	20%	40%	20%	12	3%	2	1	5	25%	42%	17%	3	1%	0	0	1	0%	33%	33%	11	5	45%	18%	1	0	0%	0%
7 Holubec	15	2%	0	2	10	13%	67%	53%	12	3%	0	1	9	8%	75%	67%	3	1%	0	1	1	33%	33%	0%	12	9	75%	67%	0			
4 Pfeffer	0								0								0								0				0			
8 Habr	0								0								0								0				0			
9 Bartos	0								0								0								0				0			
11 Krystof	0								0								0								0				0			
12 Vašíček	0								0								0								0				0			

	K1 after R#+								K1 after R-!								Freeball-Attacks							
	Σ	in %	=	/	#	=/%	#%	eff	Σ	in %	=	/	#	=/%	#%	eff	Σ	in %	=	/	#	=/%	#%	eff
Czech Republic 2015	247		19	21	143	16%	58%	42%	203		22	18	84	20%	41%	22%	91		7	8	50	16%	55%	38%
17 Konečný	42	17%	2	3	24	12%	57%	45%	45	22%	4	5	17	20%	38%	18%	17	189%	2	1	9	18%	53%	35%
10 Finger	30	12%	3	1	23	13%	77%	63%	47	23%	8	3	16	23%	34%	11%	16	160%	0	3	10	19%	62%	44%
13 Baránek	35	14%	3	6	21	26%	60%	34%	17	8%	0	3	7	18%	41%	24%	15	167%	1	0	9	7%	60%	53%
14 Bartos	20	8%	4	1	11	25%	55%	30%	19	9%	3	1	10	21%	53%	32%	9	150%	0	0	6	0%	67%	67%
16 Fila	10	4%	1	0	5	10%	50%	40%	28	14%	3	3	13	21%	46%	25%	6	0	2	1	0	50%	0%	-50%
1 Veselý	37	15%	0	1	17	3%	46%	43%	4	2%	0	0	4	0%	100%	100%	2	100%	0	0	2	0%	100%	100%
5 Král	22	9%	2	4	14	27%	64%	36%	8	4%	1	1	3	25%	38%	12%	4	400%	1	1	1	50%	25%	-25%
3 Mach	8	3%	2	1	3	38%	38%	0%	4	2%	0	0	2	0%	50%	50%	1	0	0	0	0	0%	0%	0%
7 Holubec	10	4%	0	1	7	10%	70%	60%	2	1%	0	0	2	0%	100%	100%	3	300%	0	1	1	33%	33%	0%
4 Pfeffer	0								0								0							
8 Habr	0								0								0							
9 Bartos	0								0								0							
11 Krystof	0								0								0							
12 Vašíček	0								0								0							

Rotation 1

Czech Republic 2015

Base K1 64% (28) Base K2 0% (0) Base K7 36% (16) Base KD 0% (0)



Distribution

K1 after all R 70 36% 51% K1 after R#+ 44 43% 57% K2 Transition 50 28% 44%

Category	Count	%	Count	%
0	-	-	9	13%
-	-	-	0	-
21	30%	21	30%	
24%	43%	43%	48%	

Reception	Σ	Σ %	=/	=/ %	+	+ %	#	# %	+ # %	Eff
Czech Republic 2015	85	100%	9	11%	23	27%	21	25%	52%	41%
14 Bartos	20	24%	5	25%	5	25%	7	35%	60%	35%
11 Krystof	18	21%	0	0%	6	33%	7	39%	72%	72%
19 Michalek	16	19%	1	6%	5	31%	3	19%	50%	44%
13 Baránek	12	14%	2	17%	3	25%	2	17%	42%	25%
16 Fila	11	13%	1	9%	3	27%	0	0%	27%	18%
4 Pfeffer	8	9%	0	0%	1	13%	2	25%	38%	38%

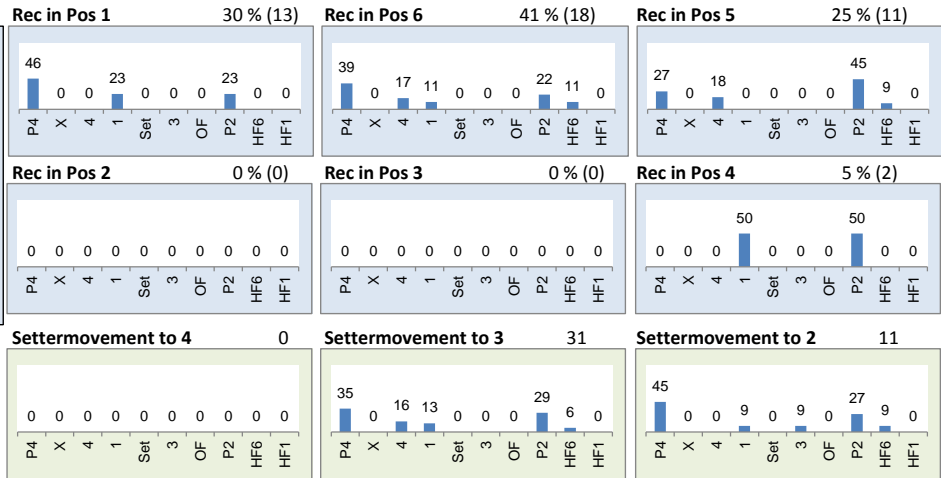
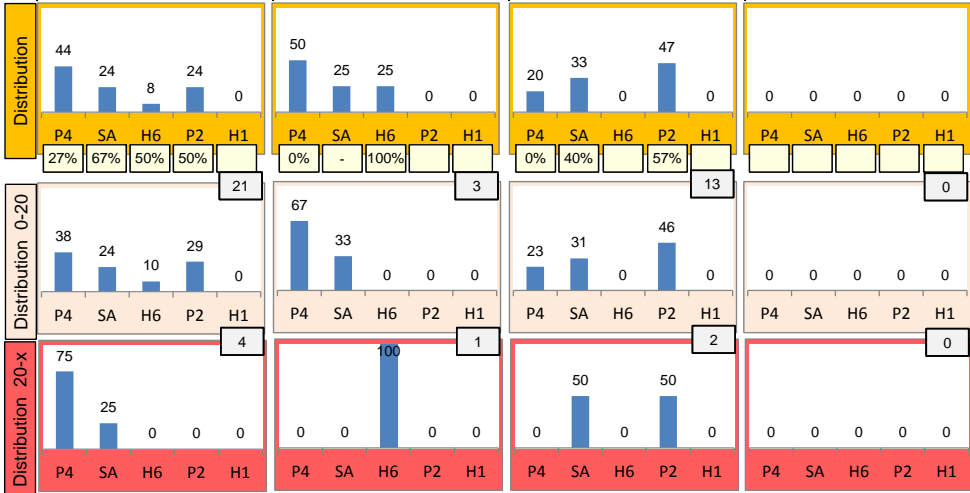
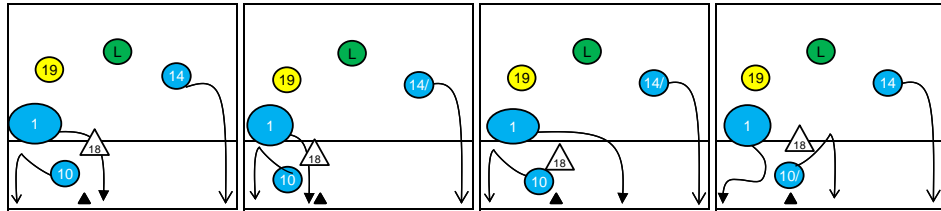
K1-Attacks after R#+	Σ	Σ %	=	= %	#	# %	Eff
Czech Republic 2015	44	100%	3	7%	25	57%	43%
1 Vesely	17	39%	0	0%	9	53%	53%
19 Michalek	7	16%	1	14%	3	43%	14%
17 Konečný	6	14%	0	0%	4	67%	50%
13 Baránek	5	11%	0	0%	3	60%	40%
16 Fila	3	7%	1	33%	1	33%	0%
10 Finger	2	5%	0	0%	2	100%	100%
14 Bartos	2	5%	0	0%	2	100%	100%

K2-Attacks - Transition	Σ	Σ %	=	= %	#	# %	Eff
Czech Republic 2015	50	100%	5	10%	22	44%	28%
19 Michalek	17	34%	1	6%	8	47%	41%
10 Finger	10	20%	1	10%	7	70%	60%
13 Baránek	9	18%	0	0%	3	33%	22%
17 Konečný	9	18%	2	22%	3	33%	-11%
14 Bartos	2	4%	0	0%	0	0%	0%
16 Fila	2	4%	1	50%	0	0%	-50%
1 Vesely	1	2%	0	0%	1	100%	100%

Rotation 6

Czech Republic 2015

Base K1 57 % (25) Base K2 9 % (4) Base K7 34 % (15) Base KD 0 % (0)



Distribution

K1 after all R 79 30% 48% K1 after R#+ 44 39% 52% K2 Transition 41 41% 51%

Category	0	-	4	5%	0	-	3	7%	0	-	2	5%	1	2%			
0	0	-	4	5%	0	-	3	7%	0	-	2	5%	1	2%			
-	-	-	50%	50%	-	-	67%	67%	-	-	0%	50%	0%	0%			
31	39%	14	18%	30	38%	13	30%	12	27%	16	36%	15	37%	2	5%	21	51%
35%	52%	50%	57%	13%	40%	54%	62%	42%	50%	19%	44%	40%	53%	50%	50%	48%	52%

Reception	Σ	Σ %	=	= %	+	+ %	#	# %	+ # %	Eff
Czech Republic 2015	97	100%	14	14%	28	29%	16	16%	45%	31%
19 Michalek	31	32%	4	13%	10	32%	3	10%	42%	29%
11 Krystof	26	27%	3	12%	8	31%	9	35%	65%	54%
16 Fila	11	11%	1	9%	3	27%	1	9%	36%	27%
4 Pfeffer	10	10%	1	10%	3	30%	1	10%	40%	30%
13 Baránek	10	10%	4	40%	1	10%	2	20%	30%	-10%
14 Bartos	8	8%	1	13%	3	38%	0	0%	38%	25%

K1-Attacks after R#+	Σ	Σ %	=	= %	#	# %	Eff
Czech Republic 2015	44	100%	2	5%	23	52%	39%
1 Vesely	9	20%	0	0%	5	56%	44%
14 Bartos	7	16%	1	14%	3	43%	14%
17 Konečný	7	16%	0	0%	3	43%	43%
10 Finger	6	14%	0	0%	5	83%	67%
19 Michalek	5	11%	1	20%	3	60%	40%
16 Fila	4	9%	0	0%	1	25%	25%
13 Baránek	3	7%	0	0%	2	67%	33%

K2-Attacks - Transitor	Σ	Σ %	=	= %	#	# %	Eff
Czech Republic 2015	41	100%	0	0%	21	51%	41%
17 Konečný	10	24%	0	0%	6	60%	60%
16 Fila	8	20%	0	0%	2	25%	12%
19 Michalek	8	20%	0	0%	5	63%	50%
10 Finger	5	12%	0	0%	2	40%	0%
14 Bartos	5	12%	0	0%	2	40%	40%
13 Baránek	3	7%	0	0%	3	100%	100%
1 Vesely	1	2%	0	0%	1	100%	100%

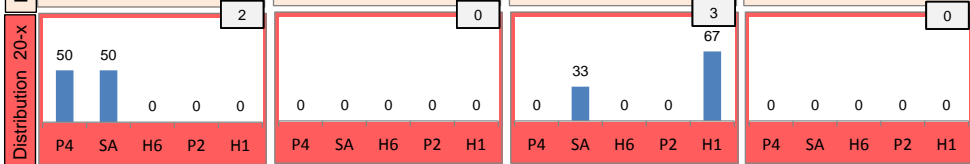
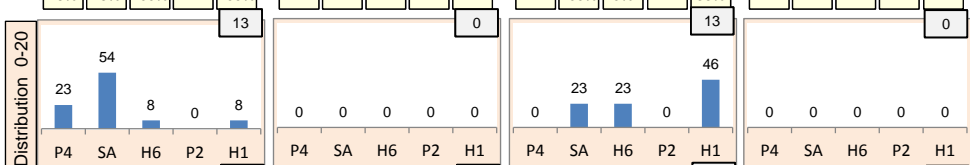
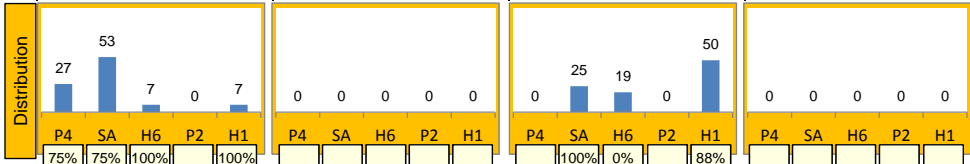
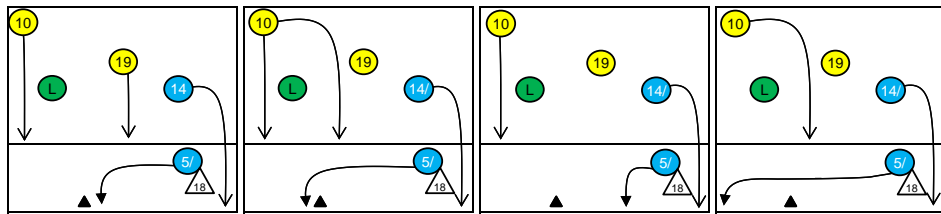
Rotation 4

Czech Republic 2015

Distribution

Base K1 48% (15) Base K2 0% (0) Base K7 52% (16) Base KD 0% (0)

K1 after all R 68 44% 56% K1 after R#+ 29 76% 79% K2 Transition 31 10% 32%



32	47%	5	7%	0	-
34%	47%	40%	60%	-	-
0	-	18	26%	13	19%
-	-	67%	72%	38%	54%

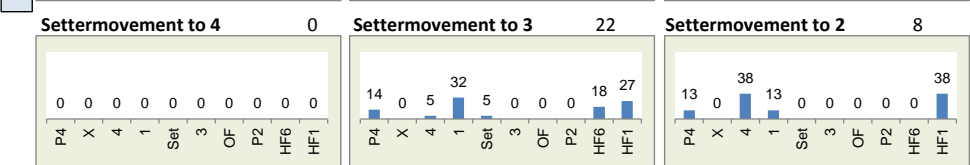
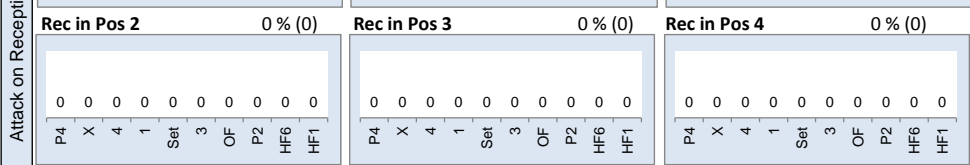
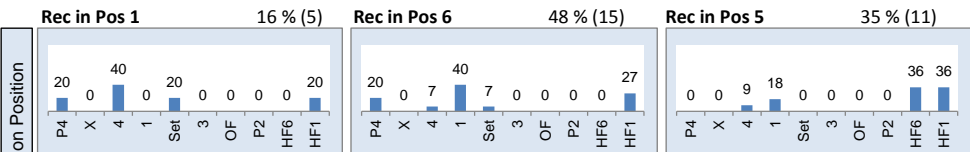
9	31%	4	14%	0	-
89%	89%	25%	50%	-	-
0	-	12	41%	4	14%
-	-	83%	83%	75%	75%

14	45%	4	13%	0	-
0%	29%	0%	25%	-	-
0	-	1	3%	12	39%
-	-	100%	100%	17%	33%

Reception	∑	∑ %	=	= %	+	+ %	#	# %	+ # %	Eff
Czech Republic 2015	91	100%	11	12%	18	20%	13	14%	34%	22%
19 Michalek	41	45%	1	2%	10	24%	4	10%	34%	32%
14 Bartos	15	16%	3	20%	2	13%	4	27%	40%	20%
11 Krystof	12	13%	0	0%	3	25%	4	33%	58%	58%
16 Fila	12	13%	4	33%	0	0%	0	0%	0%	-33%
13 Baránek	10	11%	3	30%	2	20%	1	10%	30%	0%
4 Pfeffer	1	1%	0	0%	1	100%	0	0%	100%	100%

K1-Attacks after R#+	∑	∑ %	=	= %	#	# %	Eff
Czech Republic 2015	29	100%	0	0%	23	79%	76%
5 Král	8	28%	0	0%	7	88%	88%
10 Finger	5	17%	0	0%	5	100%	100%
17 Konečný	4	14%	0	0%	3	75%	75%
14 Bartos	3	10%	0	0%	2	67%	67%
19 Michalek	3	10%	0	0%	2	67%	33%
7 Holubec	2	7%	0	0%	2	100%	100%
13 Baránek	2	7%	0	0%	1	50%	50%

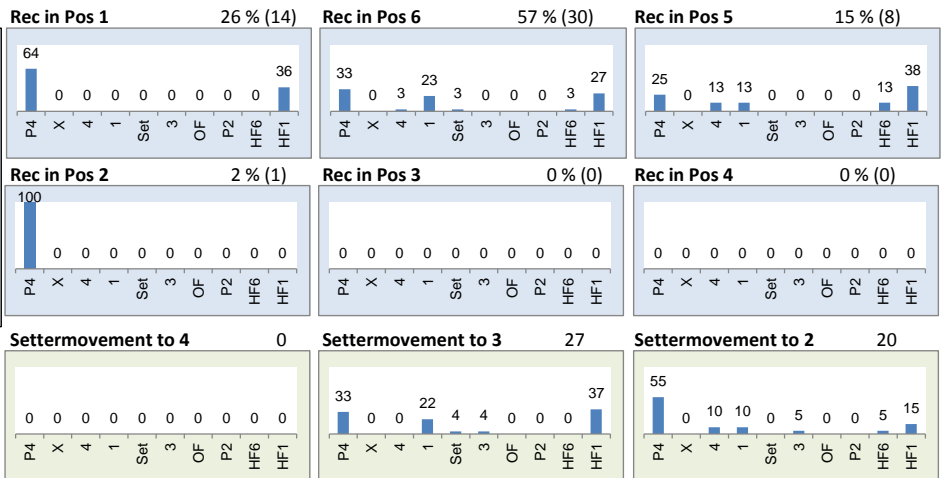
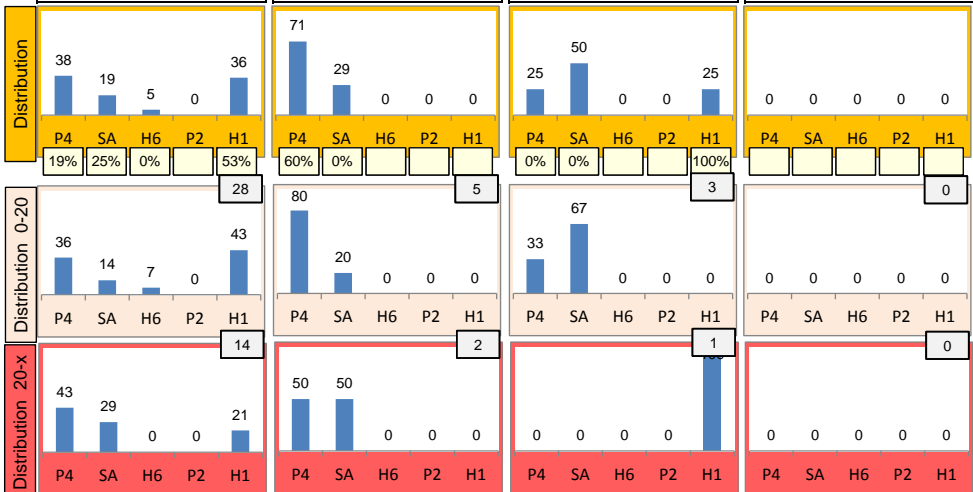
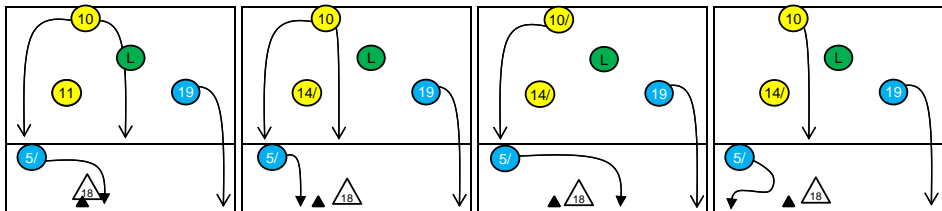
K2-Attacks - Transitor	∑	∑ %	=	= %	#	# %	Eff
Czech Republic 2015	31	100%	2	6%	10	32%	10%
17 Konečný	9	29%	1	11%	3	33%	0%
14 Bartos	8	26%	0	0%	4	50%	38%
10 Finger	5	16%	0	0%	1	20%	0%
16 Fila	4	13%	1	25%	0	0%	-50%
13 Baránek	2	6%	0	0%	0	0%	0%
19 Michalek	2	6%	0	0%	1	50%	50%
5 Král	1	3%	0	0%	1	100%	100%



Rotation 3

Czech Republic 2015

Base K1 79% (42) Base K2 13% (7) Base K7 8% (4) Base KD 0% (0)



Distribution

K1 after all R 85 28% 49% K1 after R# 52 33% 56% K2 Transition 48 25% 46%

29	34%	5	6%	0	-	16	31%	2	4%	0	-	26	54%	5	10%	0	-
41%	55%	0%	40%	-	-	56%	69%	0%	50%	-	-	23%	46%	-20%	20%	-	-
0	-	14	16%	37	44%	0	-	12	23%	22	42%	0	-	5	10%	12	25%
-	-	21%	50%	24%	46%	-	-	17%	50%	27%	50%	-	-	40%	40%	42%	58%

Reception	Σ	Σ %	=	= %	+	+ %	#	# %	+ # %	Eff
Czech Republic 2015	99	100%	7	7%	27	27%	27	27%	55%	47%
19 Michalek	32	32%	1	3%	8	25%	9	28%	53%	50%
11 Krystof	22	22%	1	5%	8	36%	6	27%	64%	59%
14 Bartos	14	14%	0	0%	5	36%	6	43%	79%	79%
4 Pfeffer	13	13%	2	15%	2	15%	3	23%	38%	23%
16 Fila	10	10%	2	20%	3	30%	0	0%	30%	10%
13 Baránek	6	6%	1	17%	1	17%	2	33%	50%	33%

K1-Attacks after R#	Σ	Σ %	=	= %	#	# %	Eff
Czech Republic 2015	52	100%	6	12%	29	56%	33%
13 Baránek	14	27%	3	21%	8	57%	29%
17 Konečný	10	19%	1	10%	7	70%	60%
19 Michalek	9	17%	0	0%	4	44%	33%
5 Král	8	15%	0	0%	4	50%	12%
10 Finger	6	12%	1	17%	4	67%	50%
7 Holubec	2	4%	0	0%	1	50%	0%
1 Veselý	1	2%	0	0%	0	0%	0%

K2-Attacks - Transition	Σ	Σ %	=	= %	#	# %	Eff
Czech Republic 2015	48	100%	6	13%	22	46%	25%
10 Finger	13	27%	1	8%	7	54%	31%
17 Konečný	13	27%	2	15%	5	38%	15%
13 Baránek	8	17%	2	25%	5	63%	25%
3 Mach	2	4%	0	0%	1	50%	50%
7 Holubec	2	4%	0	0%	1	50%	50%
14 Bartos	2	4%	1	50%	0	0%	-50%

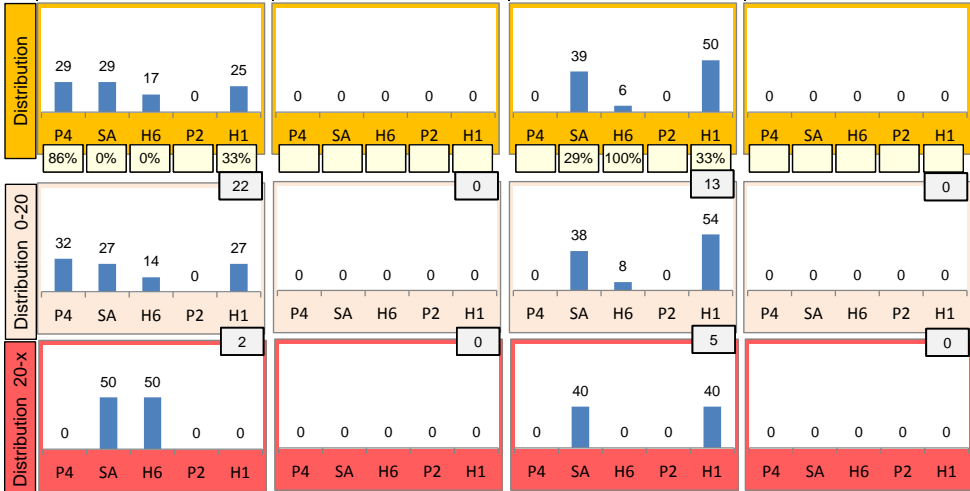
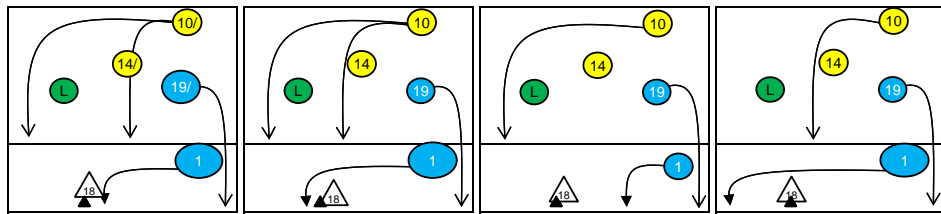
Rotation 2

Czech Republic 2015

Distribution

Base K1 57 % (24) Base K2 0 % (0) Base K7 43 % (18) Base KD 0 % (0)

K1 after all R 65 37% 52% K1 after R#+ 41 34% 51% K2 Transition 29 28% 45%



Player	Attacks	%			
25	38%	8	12%	0	-
28%	44%	50%	75%	-	-
1	2%	18	28%	13	20%
-100%	0%	33%	44%	62%	69%

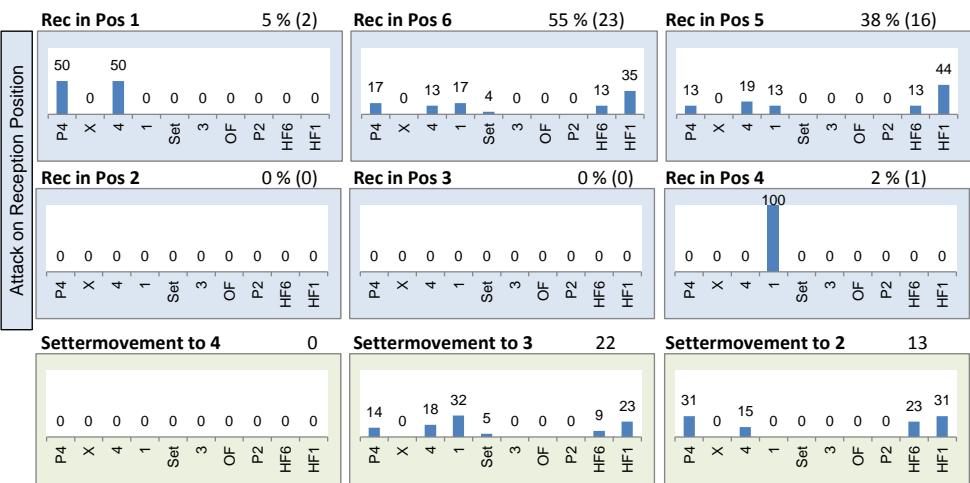
Player	Attacks	%			
15	37%	5	12%	0	-
33%	53%	20%	60%	-	-
0	-	14	34%	7	17%
-	-	14%	29%	86%	86%

Player	Attacks	%			
12	41%	3	10%	0	-
17%	42%	0%	33%	-	-
0	-	1	3%	13	45%
-	-	-100%	0%	54%	54%

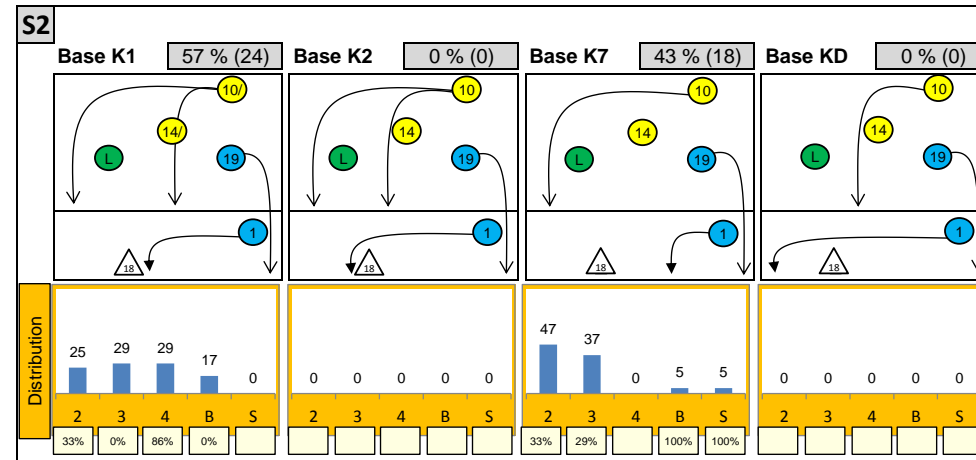
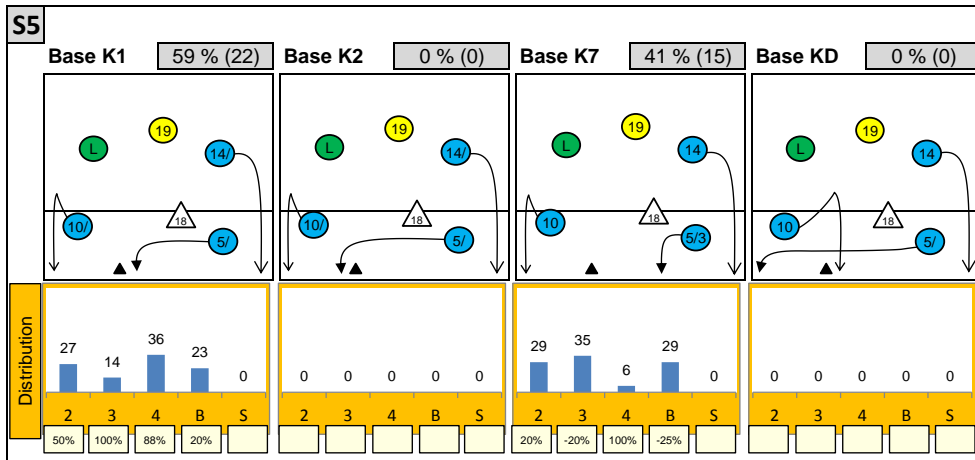
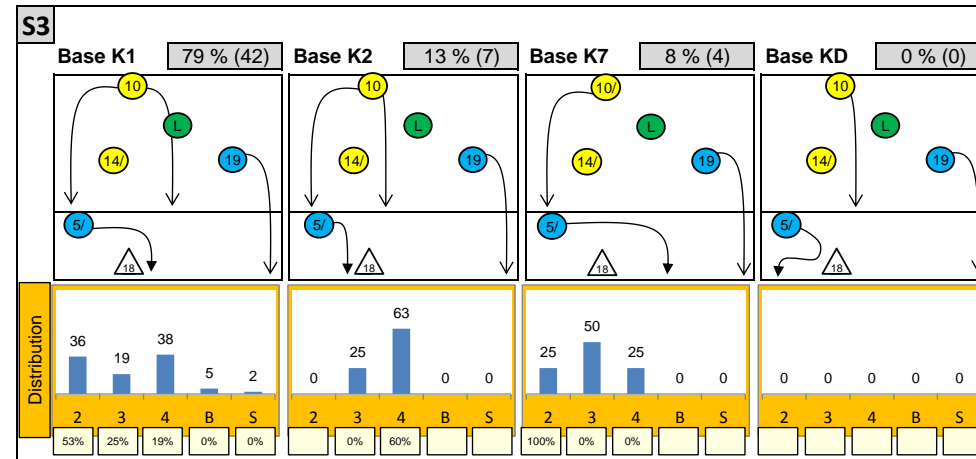
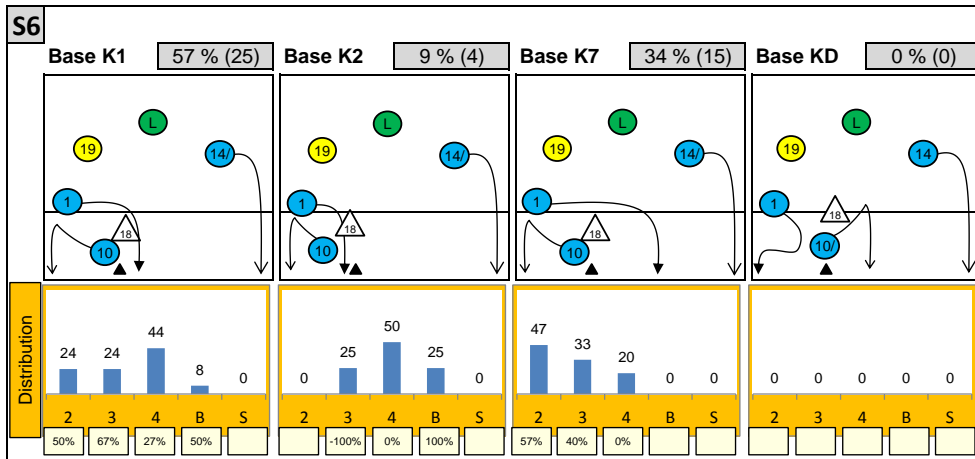
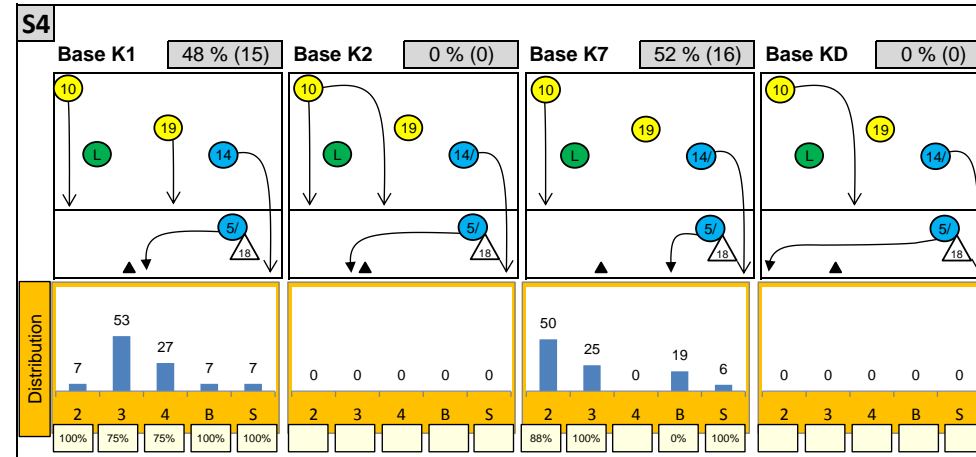
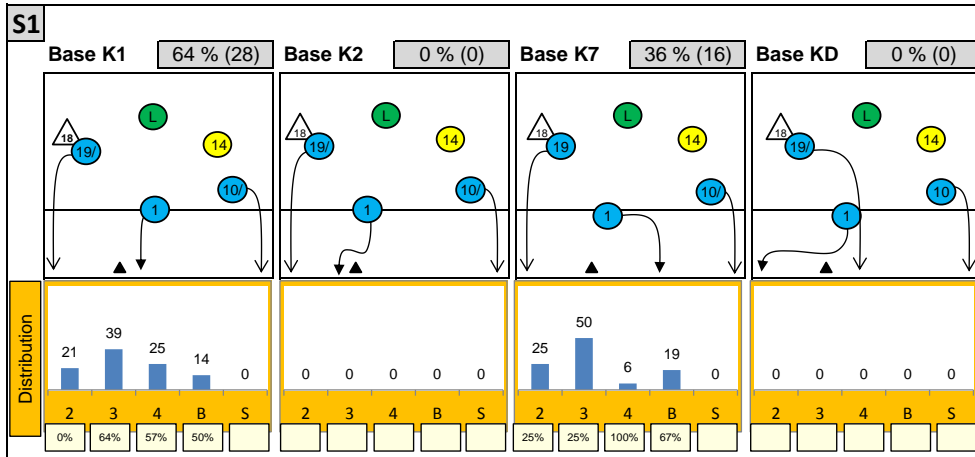
Reception	Σ	Σ %	=	= %	+	+ %	#	# %	+ # %	Eff
Czech Republic 2015	74	100%	5	7%	27	36%	16	22%	58%	51%
19 Michalek	24	32%	0	0%	9	38%	6	25%	63%	63%
14 Bartos	19	26%	3	16%	5	26%	5	26%	53%	37%
16 Fila	16	22%	0	0%	9	56%	1	6%	63%	63%
13 Baránek	5	7%	1	20%	2	40%	2	40%	80%	60%
4 Pfeffer	4	5%	0	0%	0	0%	1	25%	25%	25%
11 Krystof	4	5%	1	25%	1	25%	1	25%	50%	25%

K1-Attacks after R#+	Σ	Σ %	=	= %	#	# %	Eff
Czech Republic 2015	41	100%	6	15%	21	51%	34%
1 Veselý	9	22%	0	0%	3	33%	33%
17 Konečný	8	20%	1	13%	4	50%	38%
10 Finger	7	17%	2	29%	4	57%	29%
14 Bartos	4	10%	2	50%	2	50%	0%
19 Michalek	4	10%	0	0%	3	75%	75%
3 Mach	3	7%	1	33%	0	0%	-67%
13 Baránek	3	7%	0	0%	3	100%	100%

K2-Attacks - Transitor	Σ	Σ %	=	= %	#	# %	Eff
Czech Republic 2015	29	100%	3	10%	13	45%	28%
17 Konečný	7	24%	1	14%	3	43%	29%
19 Michalek	7	24%	0	0%	3	43%	43%
13 Baránek	6	21%	0	0%	4	67%	67%
10 Finger	5	17%	1	20%	2	40%	0%
16 Fila	2	7%	1	50%	0	0%	-50%
7 Holubec	1	3%	0	0%	0	0%	-100%
14 Bartos	1	3%	0	0%	1	100%	100%



Attackdistribution depending on Settercalls - Czech Republic 2015

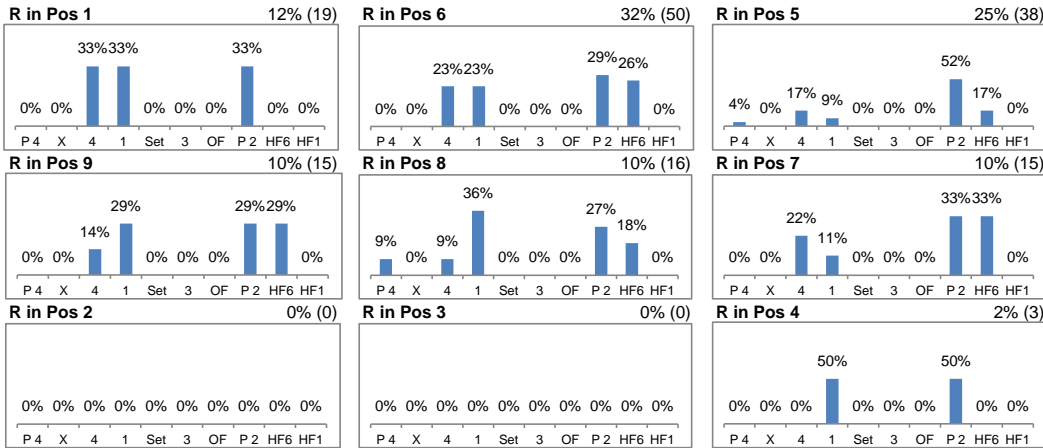


2: Attack of Opposite 3: Attack of Middleblocker 4: Attack of Outside B: Attack of Backrow

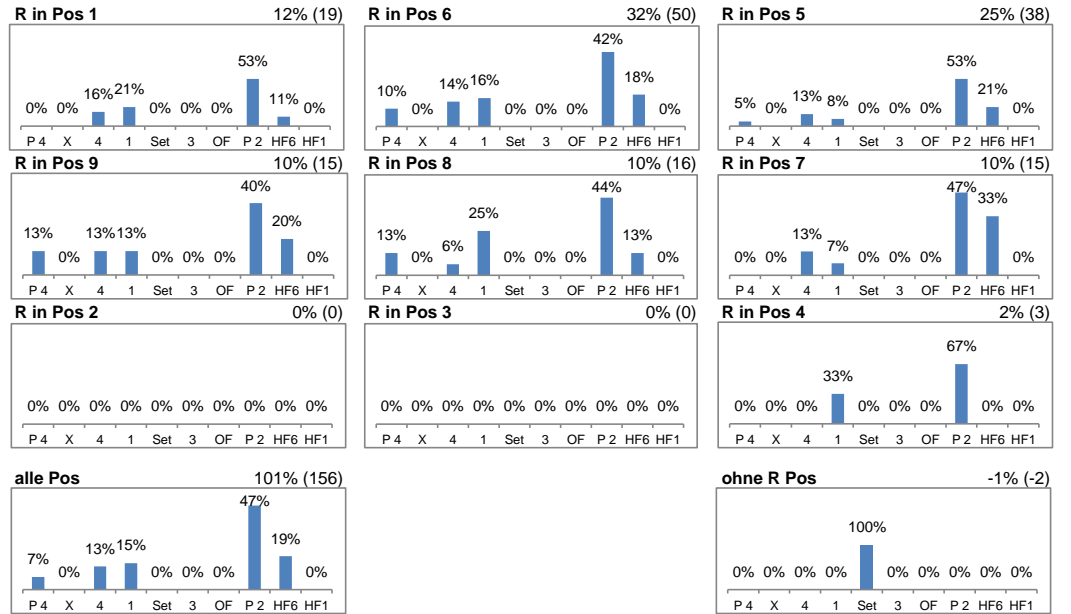
S: Attack of Setter xx%: Efficiency of Attacks (-100% to +100%)

Attacks depending on Reception Position - Czech Republic 2015

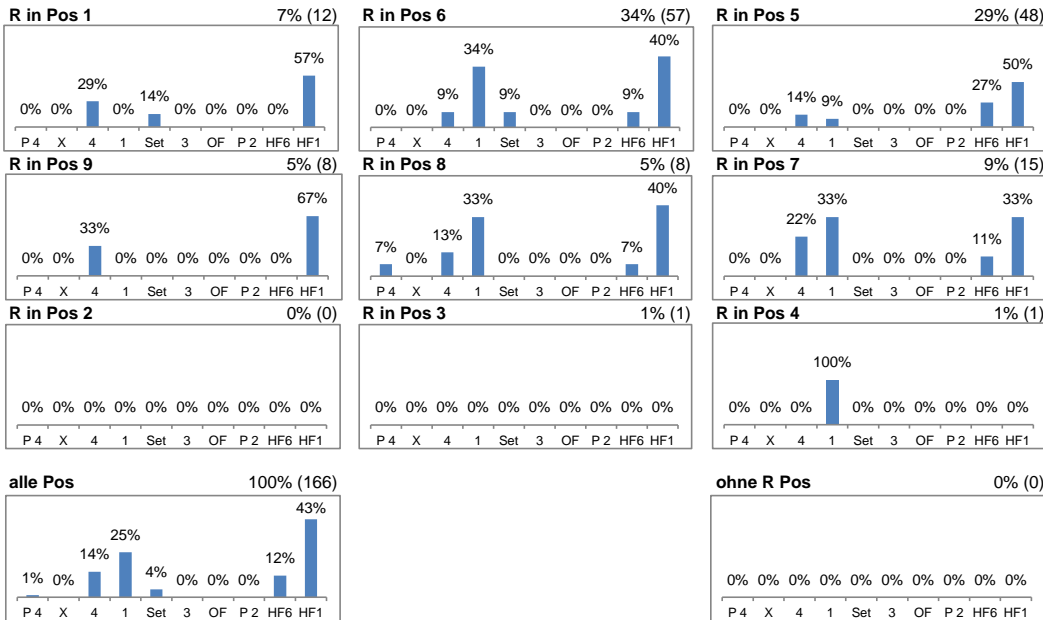
Setter back (S1, S6, S5) - R#+



Setter back (S1, S6, S5) - all Receptions



Setter front (S4, S3, S2) - R#+



Setter front (S4, S3, S2) - all Receptions

