

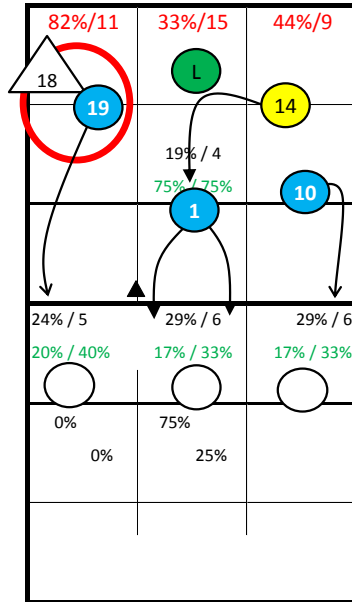
Roster

1 Veselý	MB
3 Mach	MB
4 Pfeffer	Lib
5 Král	MB
7 Holubec	MB
9 Bartos	Set
10 Finger	Opp
11 Krystof	Lib
13 Baránek	Out
14 Bartos	Out
16 Fila	Out
18 Janouch	Set
19 Michalek	Out

Czech Republic 2015

9: Jumpfloat at Position 1

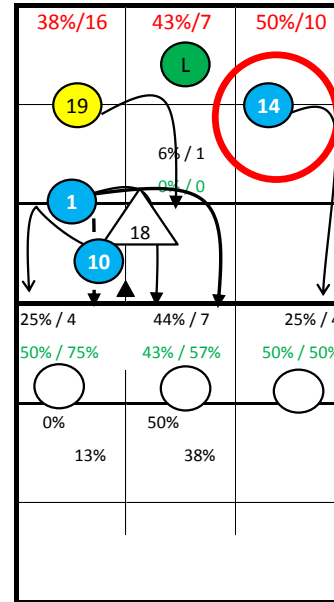
18: Jumpserve at Position 1



S1

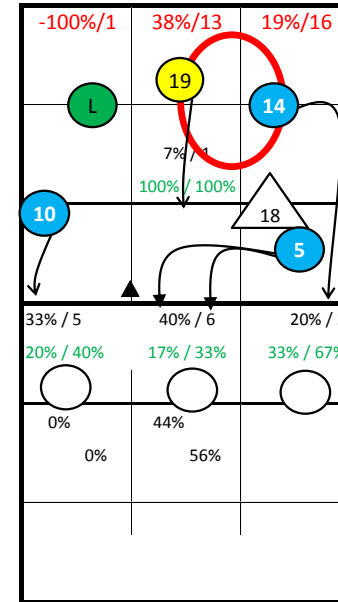
13: Jumpserve at Position 1

19: Jumpfloat at Position 5



S6

1: Jumpserve at Position 6



S5

S1

S6

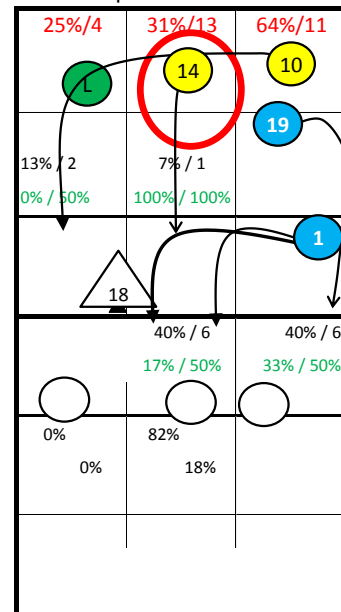
S5

Starting Lineup:

18/9	5/3	14/16
L: 11/4		
19/13	1	10/16

3: Jumpfloat at Position 1

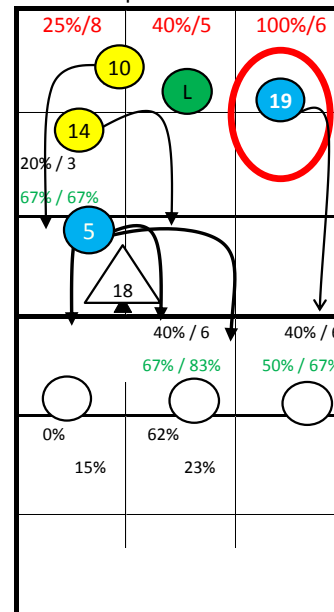
5: Jumpserve at Position 6



S2

16: Jumpserve at Position 1

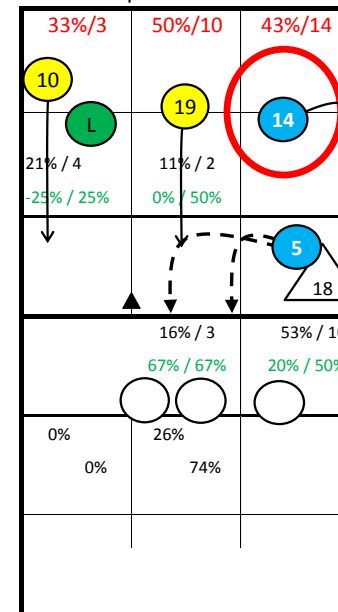
14: Jumpfloat at Position 1



S3

16: Jumpserve at Position 1

10: Jumpserve at Position 6



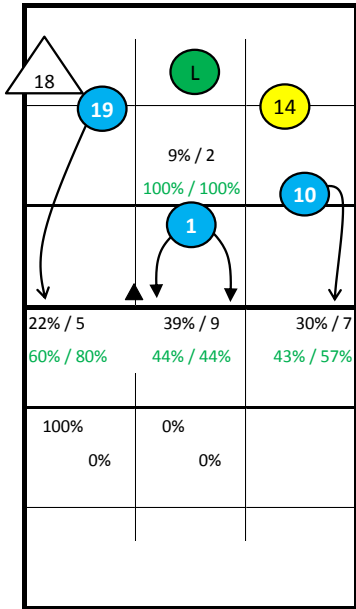
S4

S4

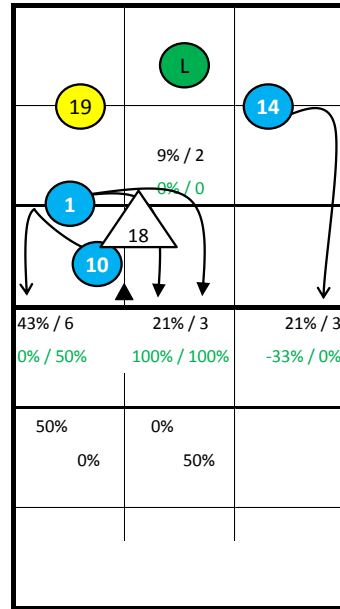
S3

S2

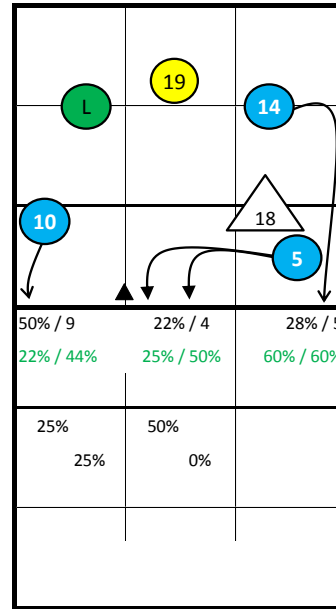
Czech Republic 2015 -



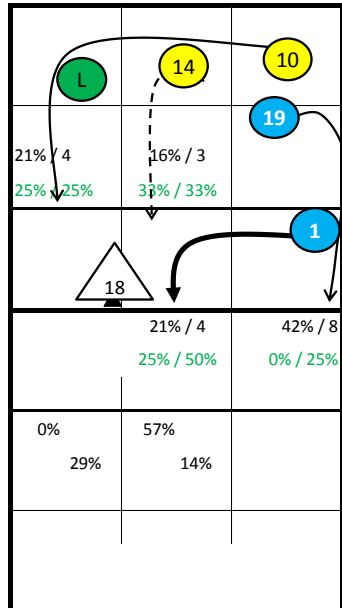
S1



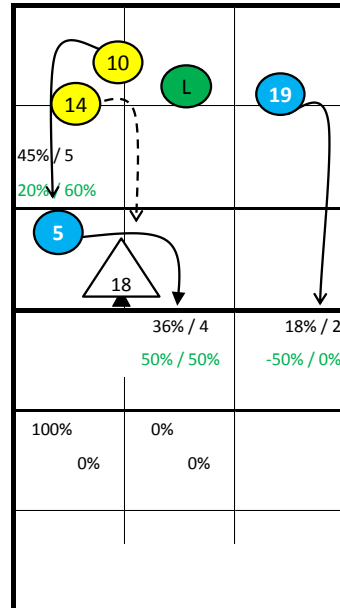
S6



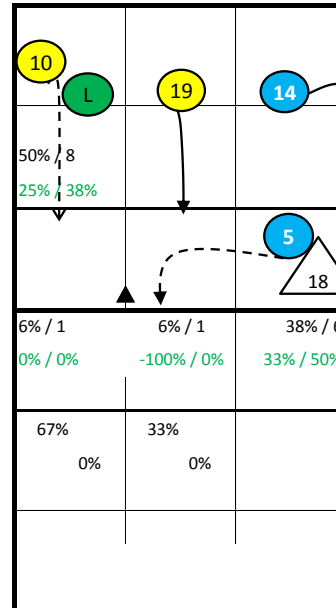
S5



S2



S3



S4

Czech Republic 2015 - all Statistics

pId	Points					Serve							Reception										Attack												
	Set	pts	P/s	easy=	all=	W-L	Σ	=	-	+	#	=%	#%	eff%	Σ	in %	=	/	-	+	#	=/%	+#%	#%	eff%	Σ	in %	=	/	!	+	#	=/%	#%	eff%
Czech Republic 2015	11	162	14,7	87	215	-53	227	45	76	95	11	20%	5%	27%	215		14	2	93	56	50	7%	49%	23%	42%	293		31	28	20	54	137	20%	47%	27%
1 Veselý	11	22	2,0	13	32	-10	40	9	12	17	2	23%	5%	25%	3	1%	0	0	3	0	0	0%	0%	0%	0%	33	11%	2	3	4	5	18	15%	55%	39%
3 Mach	10	17	1,7	3	11	6	22	3	7	9	3	14%	14%	41%	5	2%	0	0	1	2	2	0%	80%	40%	80%	16	5%	0	2	1	2	10	13%	62%	50%
4 Pfeffer	2	0				0	0							8	4%	0	0	7	1	0	0%	12%	0%	12%	0										
5 Král	3	0		4	7	-7	4	2	2	0	0	50%	0%	-50%	0										4	1%	1	0	1	2	0	25%	0%	-25%	
7 Holubec	2	0		2	8	-8	3	1	1	1	0	33%	0%	0%	0										2	1%	1	0	1	0	0	50%	0%	-50%	
9 Bartos	2	0		1	1	-1	4	1	0	3	0	25%	0%	50%	0										0										
10 Finger	11	50	4,5	28	52	-2	33	12	11	9	1	36%	3%	-6%	0										93	32%	14	9	5	12	46	25%	49%	25%	
11 Krystof	10	1	0,1		11	-10	0							35	16%	3	0	18	7	7	9%	40%	20%	31%	1	0%	0	0	0	1	0%	100%	100%		
13 Baránek	5	8	1,6	7	16	-8	14	6	3	5	0	43%	0%	-7%	23	11%	0	0	12	3	8	0%	48%	35%	48%	24	8%	1	5	5	4	7	25%	29%	4%
14 Bartos	11	36	3,3	9	29	7	31	4	11	15	1	13%	3%	39%	70	33%	7	2	28	15	18	13%	47%	26%	34%	66	23%	5	6	1	17	33	17%	50%	33%
16 Fila	3	2	0,7	1	4	-2	3	1	0	2	0	33%	0%	33%	4	2%	0	0	3	1	0	0%	25%	0%	25%	7	2%	0	1	0	2	2	14%	29%	14%
18 Janouch	10	8	0,8	12	24	-16	49	5	18	23	3	10%	6%	43%	0										10	3%	1	0	1	2	5	10%	50%	40%	
19 Michalek	9	18	2,0	7	20	-2	24	1	11	11	1	4%	4%	46%	67	31%	4	0	21	27	15	6%	62%	22%	57%	37	13%	6	2	1	8	15	22%	41%	19%

	Block						Defense						Freeball					Set		
	Σ	=	+	#	#%	eff%	Σ	=	/!	+ #	+ #%	eff%	Σ	err	bad	god	eff%	Σ	=	eff%
Czech Republic 2015	113	55	12	14	12%	-22%	168	33	67	68	40%	21%	15	0	15	0	-7%	267	9	52%
1 Veselý	30	16	3	2	7%	-33%	11	2	3	6	55%	36%	0					1	0	0%
3 Mach	12	4	1	4	33%	8%	8	2	5	1	13%	-12%	0					6	0	0%
4 Pfeffer	0						4	0	1	3	75%	75%	1	0	1	0	0%	0	0	0%
5 Král	6	3	0	0	0%	-50%	0						0					4	1	-25%
7 Holubec	7	5	1	0	0%	-57%	1	1	0	0	0%	-100%	0					1	0	100%
9 Bartos	1	0	0	0	0%	0%	0						2	0	2	0	0%	18	0	50%
10 Finger	17	7	2	3	18%	-6%	26	8	9	9	35%	4%	1	0	1	0	-100%	10	2	-20%
11 Krystof	1	0	0	0	0%	0%	39	8	12	19	49%	28%	0					18	0	6%
13 Baránek	5	2	1	1	20%	0%	11	2	5	4	36%	18%	2	0	2	0	0%	0	0	0%
14 Bartos	13	6	1	2	15%	-15%	14	1	6	7	50%	43%	5	0	5	0	0%	3	0	-33%
16 Fila	2	1	0	0	0%	-50%	5	1	1	3	60%	40%	1	0	1	0	0%	0	0	0%
18 Janouch	11	7	2	0	0%	-45%	32	5	16	11	34%	19%	1	0	1	0	0%	202	6	65%
19 Michalek	8	4	1	2	25%	0%	17	3	9	5	29%	12%	2	0	2	0	0%	4	0	-25%

pId Set played Sets
 P/s Points per Set
 pts Points
 easy= easy errors (serve, net contact, ...)
 all= all errors
 W-L points - errors
 Σ sum of all events
 in % in percent of all team events

Czech Republic 2015 - Attack-Statistic

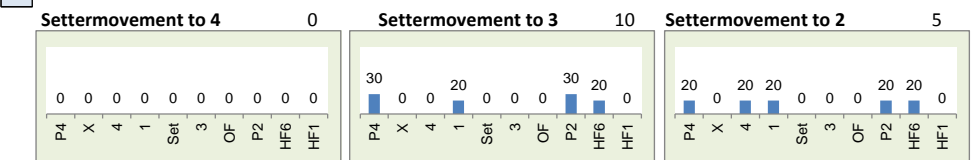
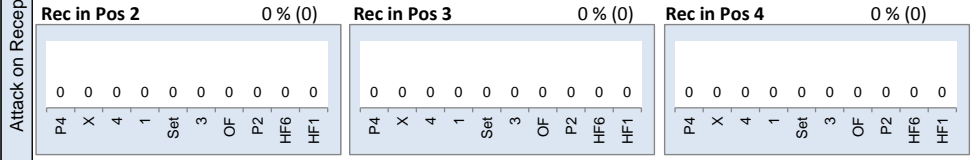
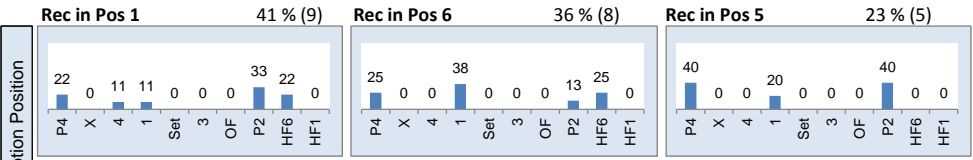
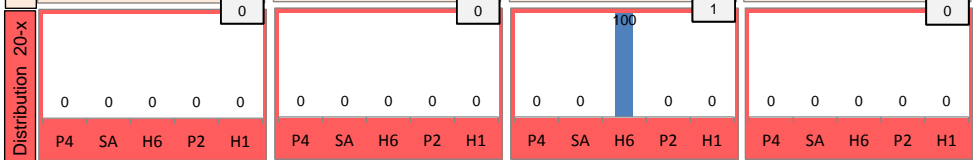
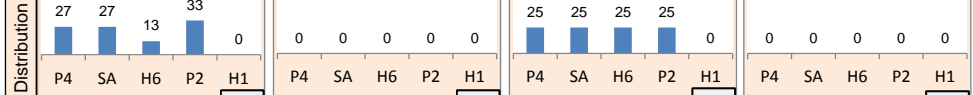
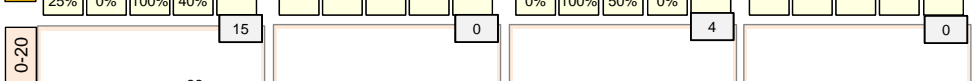
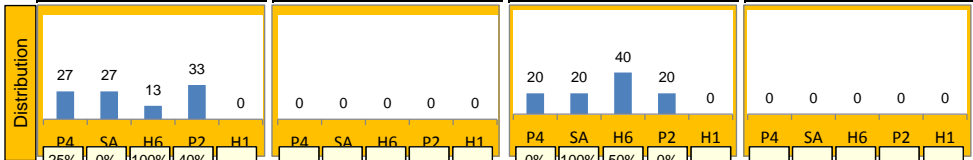
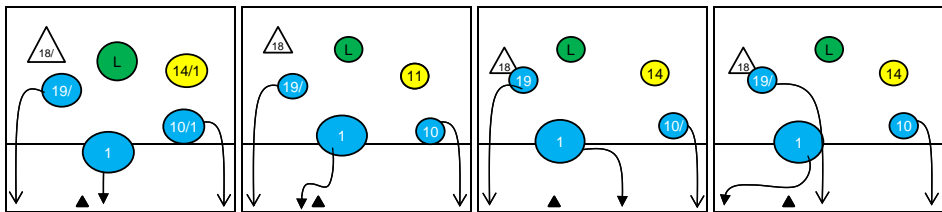
	K1 & K2 Attacks								K1 All Attacks								K2 Attacks								K1 aft R other Ply				K1 after own Rec											
	Σ	in %	=	/	#	=/%	#%	eff	Σ	in %	=	/	#	=/%	#%	eff	Σ	in %	=	/	#	=/%	#%	eff	sum	#	#%	eff	sum	#	#%	eff								
Czech Republic 2015	267		30	28	121	22%	45%	24%	175		21	18	82	22%	47%	25%	92		9	10	39	21%	42%	22%	142	64	45%						33	18	55%					
10 Finger	93	35%	14	9	46	25%	49%	25%	52	30%	9	5	25	27%	48%	21%	41	45%	5	4	21	22%	51%	29%	52	25	48%	21%					0							
14 Bartos	64	24%	5	6	31	17%	48%	31%	43	25%	5	4	23	21%	53%	33%	21	23%	0	2	8	10%	38%	29%	28	14	50%	25%					15	9	60%	47%				
19 Michalek	32	12%	6	2	13	25%	41%	16%	21	12%	3	1	10	19%	48%	29%	11	12%	3	1	3	36%	27%	-9%	9	4	44%	22%					12	6	50%	33%				
1 Veselý	27	10%	2	3	13	19%	48%	30%	23	13%	2	2	12	17%	52%	35%	4	4%	0	1	1	25%	25%	0%	23	12	52%	35%					0							
13 Baránek	23	9%	1	5	7	26%	30%	4%	16	9%	1	4	5	31%	31%	0%	7	8%	0	1	2	14%	29%	14%	12	3	25%	0%					4	2	50%	0%				
3 Mach	13	5%	0	2	8	15%	62%	46%	12	7%	0	2	7	17%	58%	42%	1	1%	0	0	1	0%	100%	100%	10	6	60%	40%					2	1	50%	50%				
16 Fila	7	3%	0	1	2	14%	29%	14%	3	2%	0	0	0	0%	0%	0%	4	4%	0	1	2	25%	50%	25%	3	0	0%	0%					0							
5 Král	4	2%	1	0	0	25%	0%	-25%	4	2%	1	0	0	25%	0%	-25%	0								4	0	0%	-25%					0							
7 Holubec	2	1%	1	0	0	50%	0%	-50%	1	1%	0	0	0	0%	0%	0%	1	1%	1	0	0	100%	0%	-100%	1	0	0%	0%					0							
11 Krystof	1	0%	0	0	1	0%	100%	100%	0								1	1%	0	0	1	0%	100%	100%	0								0							
18 Janouch	1	0%	0	0	0	0%	0%	0%	0								1	1%	0	0	0	0%	0%	0%	0								0							
4 Pfeffer	0								0								0								0								0							
9 Bartos	0								0								0								0								0							

	K1 after R#+								K1 after R-!								Freeball-Attacks							
	Σ	in %	=	/	#	=/%	#%	eff	Σ	in %	=	/	#	=/%	#%	eff	Σ	in %	=	/	#	=/%	#%	eff
Czech Republic 2015	103		11	10	55	20%	53%	33%	72		10	8	27	25%	38%	12%	40		7	5	17	30%	43%	12%
10 Finger	26	25%	5	1	12	23%	46%	23%	26	36%	4	4	13	31%	50%	19%	19	211%	4	3	9	37%	47%	11%
14 Bartos	23	22%	1	3	14	17%	61%	43%	20	28%	4	1	9	25%	45%	20%	6	200%	0	0	3	0%	50%	50%
19 Michalek	12	12%	3	0	7	25%	58%	33%	9	12%	0	1	3	11%	33%	22%	4	0	2	1	0	75%	0%	-75%
1 Veselý	19	18%	2	2	10	21%	53%	32%	4	6%	0	0	2	0%	50%	50%	2	200%	0	0	1	0%	50%	50%
13 Baránek	10	10%	0	2	5	20%	50%	30%	6	8%	1	2	0	50%	0%	-50%	5	500%	0	1	1	20%	20%	0%
3 Mach	12	12%	0	2	7	17%	58%	42%	0								1	100%	0	0	1	0%	100%	100%
16 Fila	0								3	4%	0	0	0	0%	0%	0%	2	100%	0	0	2	0%	100%	100%
5 Král	1	1%	0	0	0	0%	0%	0%	3	4%	1	0	0	33%	0%	-33%	0							
7 Holubec	0								1	1%	0	0	0	0%	0%	0%	1	0	1	0	0	100%	0%	-100%
11 Krystof	0								0								0							
18 Janouch	0								0								0							
4 Pfeffer	0								0								0							
9 Bartos	0								0								0							

Rotation 1

Czech Republic 2015

Base K1 75 % (15) Base K2 0 % (0) Base K7 25 % (5) Base KD 0 % (0)



Distribution

K1 after all R 34 18% 38% K1 after R#+ 22 32% 45% K2 Transition 18 61% 72%

	0	-	4	12%	0	-	0	-	2	11%	0	-
	-	-	75%	75%	-	-	-	-	100%	100%	-	-
	13	38%	6	18%	11	32%	6	27%	6	27%	6	27%
	8%	31%	17%	33%	9%	36%	33%	50%	17%	33%	17%	33%

Reception	∑	∑ %	=/	=/ %	+	+ %	#	# %	+ # %	Eff
Czech Republic 2015	41	100%	2	5%	13	32%	9	22%	54%	49%
11 Krystof	15	37%	1	7%	3	20%	3	20%	40%	33%
19 Michalek	11	27%	0	0%	7	64%	2	18%	82%	82%
14 Bartos	9	22%	1	11%	2	22%	3	33%	56%	44%
13 Baránek	3	7%	0	0%	1	33%	1	33%	67%	67%
1 Vesely	2	5%	0	0%	0	0%	0	0%	0%	0%
4 Pfeffer	1	2%	0	0%	0	0%	0	0%	0%	0%

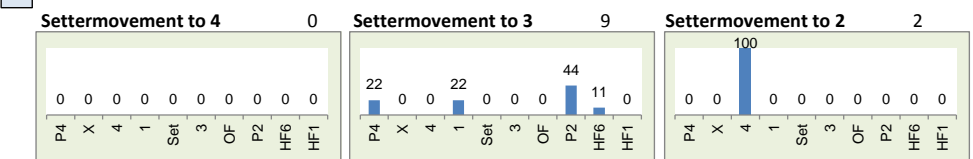
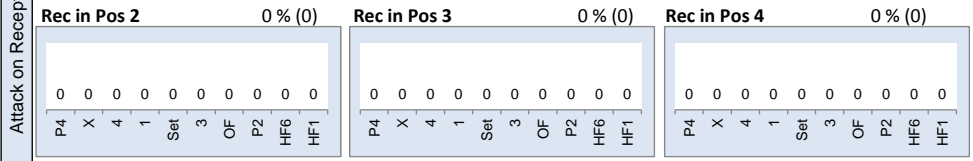
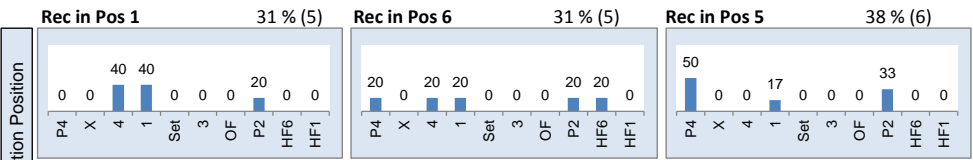
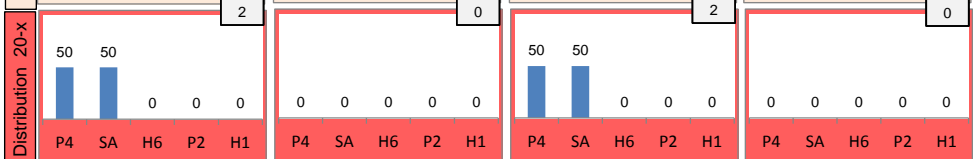
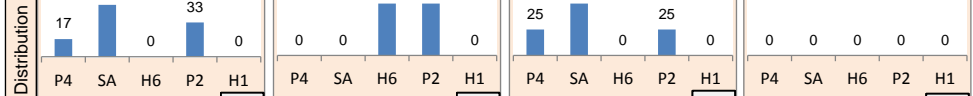
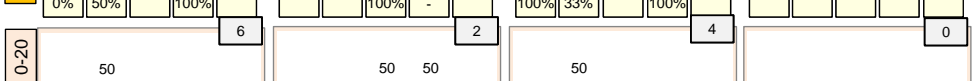
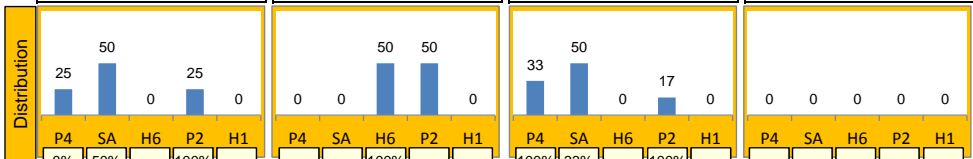
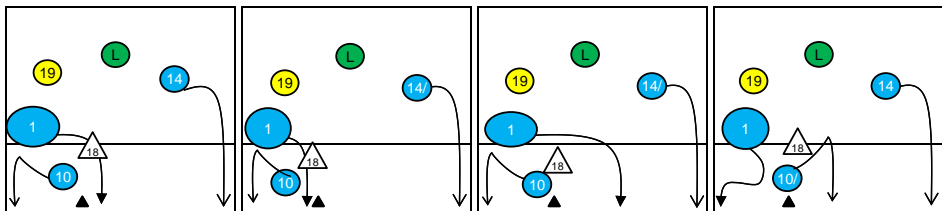
K1-Attacks after R#+	∑	∑ %	=	= %	#	# %	Eff
Czech Republic 2015	22	100%	3	14%	10	45%	32%
1 Vesely	6	27%	1	17%	2	33%	17%
10 Finger	6	27%	1	17%	2	33%	17%
19 Michalek	5	23%	1	20%	2	40%	20%
14 Bartos	4	18%	0	0%	3	75%	75%
13 Baránek	1	5%	0	0%	1	100%	100%
3 Mach	0	0%	0	-	0	-	-
4 Pfeffer	0	0%	0	-	0	-	-

K2-Attacks - Transition	∑	∑ %	=	= %	#	# %	Eff
Czech Republic 2015	18	100%	1	6%	13	72%	61%
10 Finger	8	44%	0	0%	6	75%	62%
19 Michalek	5	28%	1	20%	3	60%	40%
1 Vesely	2	11%	0	0%	1	50%	50%
11 Krystof	1	6%	0	0%	1	100%	100%
14 Bartos	1	6%	0	0%	1	100%	100%
16 Fila	1	6%	0	0%	1	100%	100%
3 Mach	0	0%	0	-	0	-	-

Rotation 6

Czech Republic 2015

Base K1 50% (8) Base K2 13% (2) Base K7 38% (6) Base KD 0% (0)



Distribution

K1 after all R 35 43% 57% K1 after R#+ 16 50% 63% K2 Transition 12 -17% 25%

	0	1	2	3	4	5	6	7	8	9	10	11	12	13	14	15	16	17	18	19	20
0	-	3%	-	-	-	-	-	-	-	-	-	-	-	-	-	-	-	-	-	-	-
1	100%	100%	-	-	-	-	-	-	-	-	-	-	-	-	-	-	-	-	-	-	-
2	-	-	17%	0%	-	-	-	-	-	-	-	-	-	-	-	-	-	-	-	-	-
3	-	-	-	-	25%	44%	25%	-	-	-	-	-	-	-	-	-	-	-	-	-	-
4	-	-	-	-	-	-	-	58%	-	-	-	-	-	-	-	-	-	-	-	-	-
5	-	-	-	-	-	-	-	-	-	-	-	-	-	-	-	-	-	-	-	-	-
6	-	-	-	-	-	-	-	-	-	-	-	-	-	-	-	-	-	-	-	-	-
7	-	-	-	-	-	-	-	-	-	-	-	-	-	-	-	-	-	-	-	-	-
8	-	-	-	-	-	-	-	-	-	-	-	-	-	-	-	-	-	-	-	-	-
9	-	-	-	-	-	-	-	-	-	-	-	-	-	-	-	-	-	-	-	-	-
10	-	-	-	-	-	-	-	-	-	-	-	-	-	-	-	-	-	-	-	-	-
11	-	-	-	-	-	-	-	-	-	-	-	-	-	-	-	-	-	-	-	-	-
12	-	-	-	-	-	-	-	-	-	-	-	-	-	-	-	-	-	-	-	-	-
13	-	-	-	-	-	-	-	-	-	-	-	-	-	-	-	-	-	-	-	-	-
14	-	-	-	-	-	-	-	-	-	-	-	-	-	-	-	-	-	-	-	-	-
15	-	-	-	-	-	-	-	-	-	-	-	-	-	-	-	-	-	-	-	-	-
16	-	-	-	-	-	-	-	-	-	-	-	-	-	-	-	-	-	-	-	-	-
17	-	-	-	-	-	-	-	-	-	-	-	-	-	-	-	-	-	-	-	-	-
18	-	-	-	-	-	-	-	-	-	-	-	-	-	-	-	-	-	-	-	-	-
19	-	-	-	-	-	-	-	-	-	-	-	-	-	-	-	-	-	-	-	-	-
20	-	-	-	-	-	-	-	-	-	-	-	-	-	-	-	-	-	-	-	-	-

Reception	Σ	Σ %	=	= %	+	+ %	#	# %	+ # %	Eff
Czech Republic 2015	37	100%	1	3%	10	27%	6	16%	43%	41%
19 Michalek	16	43%	0	0%	5	31%	1	6%	38%	38%
14 Bartos	10	27%	1	10%	4	40%	2	20%	60%	50%
11 Krystof	7	19%	0	0%	1	14%	2	29%	43%	43%
13 Baránek	2	5%	0	0%	0	0%	1	50%	50%	50%
4 Pfeffer	1	3%	0	0%	0	0%	0	0%	0%	0%
16 Fila	1	3%	0	0%	0	0%	0	0%	0%	0%

K1-Attacks after R#+	Σ	Σ %	=	= %	#	# %	Eff
Czech Republic 2015	16	100%	1	6%	10	63%	50%
1 Vesely	7	44%	0	0%	4	57%	43%
10 Finger	4	25%	1	25%	3	75%	50%
14 Bartos	4	25%	0	0%	2	50%	50%
19 Michalek	1	6%	0	0%	1	100%	100%
3 Mach	0	0%	0	-	0	-	-
4 Pfeffer	0	0%	0	-	0	-	-
5 Král	0	0%	0	-	0	-	-

K2-Attacks - Transitor	Σ	Σ %	=	= %	#	# %	Eff
Czech Republic 2015	12	100%	3	25%	3	25%	-17%
10 Finger	7	58%	3	43%	3	43%	0%
16 Fila	2	17%	0	0%	0	0%	-50%
13 Baránek	1	8%	0	0%	0	0%	0%
14 Bartos	1	8%	0	0%	0	0%	0%
19 Michalek	1	8%	0	0%	0	0%	-100%
1 Vesely	0	0%	0	-	0	-	-
3 Mach	0	0%	0	-	0	-	-

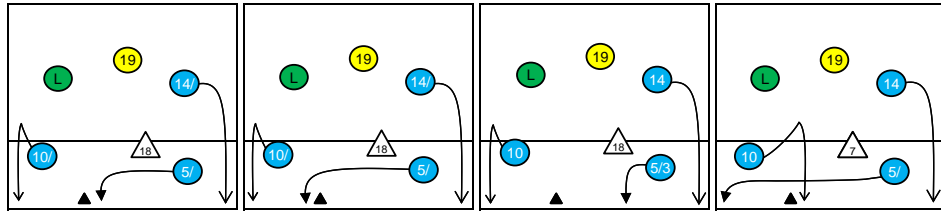
Rotation 5

Czech Republic 2015

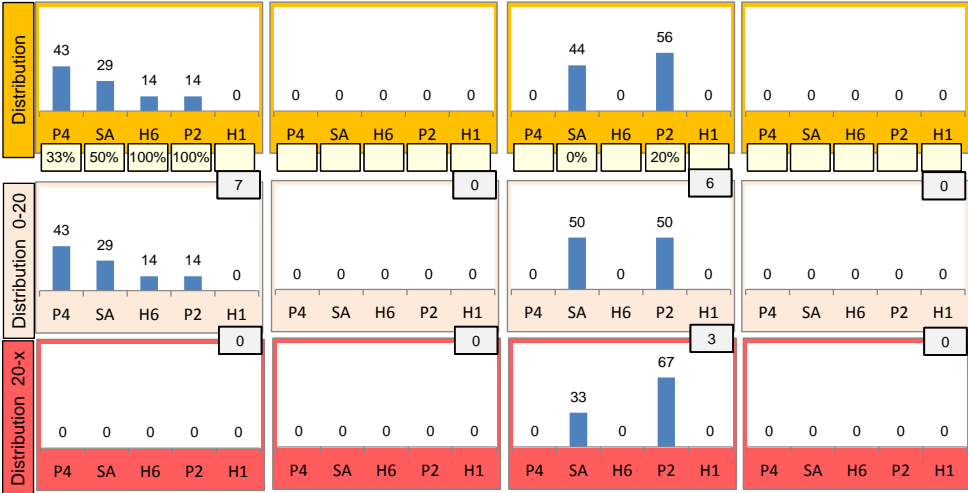
Distribution

Base K1 44% (7) Base K2 0% (0) Base K7 56% (9) Base KD 0% (0)

K1 after all R 27 33% 52% K1 after R#+ 16 31% 50% K2 Transition 16 31% 50%



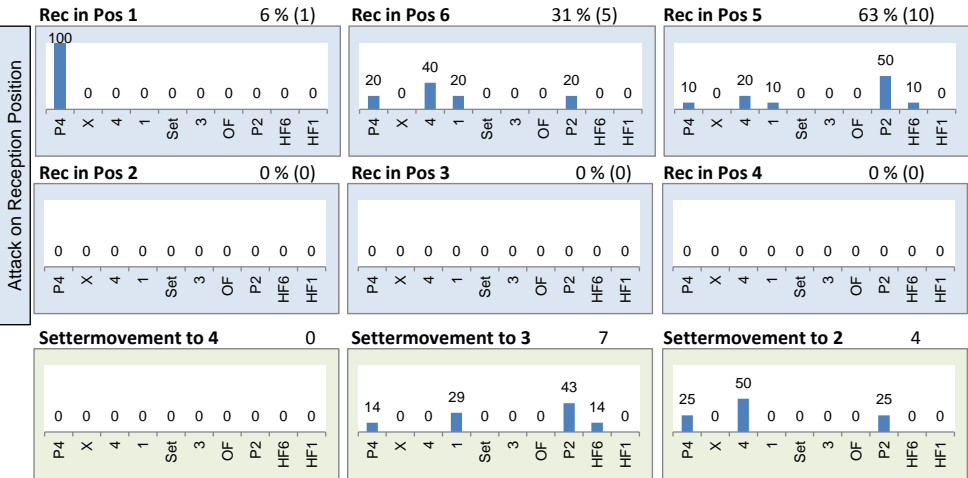
1	4%	1	4%	0	-	0	-	1	6%	0	-	0	-	0	-	0	-
-100%	0%	100%	100%	-	-	-	-	100%	100%	-	-	-	-	-	-	-	-
10	37%	7	26%	8	30%	6	38%	6	38%	3	19%	9	56%	2	13%	5	31%
50%	60%	14%	29%	38%	63%	33%	50%	17%	33%	33%	67%	22%	44%	0%	50%	60%	60%



Reception	Σ	Σ %	=/	=/ %	+	+ %	#	# %	+ # %	Eff
Czech Republic 2015	38	100%	5	13%	10	26%	6	16%	42%	29%
14 Bartos	16	42%	2	13%	1	6%	4	25%	31%	19%
19 Michalek	13	34%	2	15%	6	46%	1	8%	54%	38%
13 Baránek	6	16%	0	0%	2	33%	1	17%	50%	50%
1 Veselý	1	3%	0	0%	0	0%	0	0%	0%	0%
3 Mach	1	3%	0	0%	1	100%	0	0%	100%	100%
11 Krystof	1	3%	1	100%	0	0%	0	0%	0%	-100%

K1-Attacks after R#+	Σ	Σ %	=	= %	#	# %	Eff
Czech Republic 2015	16	100%	1	6%	8	50%	31%
10 Finger	6	38%	1	17%	3	50%	33%
3 Mach	5	31%	0	0%	2	40%	20%
14 Bartos	4	25%	0	0%	3	75%	50%
5 Král	1	6%	0	0%	0	0%	0%
1 Veselý	0	0%	0	-	0	-	-
4 Pfeffer	0	0%	0	-	0	-	-
7 Holubec	0	0%	0	-	0	-	-

K2-Attacks - Transition	Σ	Σ %	=	= %	#	# %	Eff
Czech Republic 2015	16	100%	2	13%	8	50%	31%
10 Finger	8	50%	1	13%	3	38%	12%
14 Bartos	5	31%	0	0%	3	60%	60%
3 Mach	1	6%	0	0%	1	100%	100%
7 Holubec	1	6%	1	100%	0	0%	-100%
16 Fila	1	6%	0	0%	1	100%	100%
1 Veselý	0	0%	0	-	0	-	-
4 Pfeffer	0	0%	0	-	0	-	-



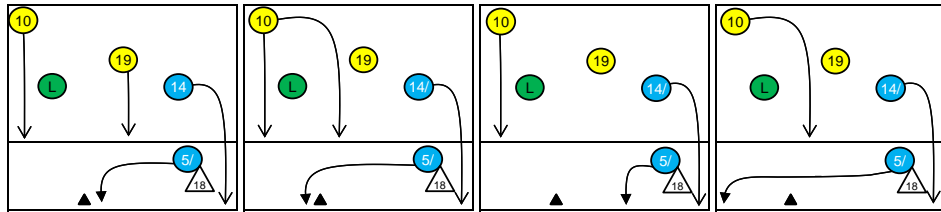
Rotation 4

Czech Republic 2015

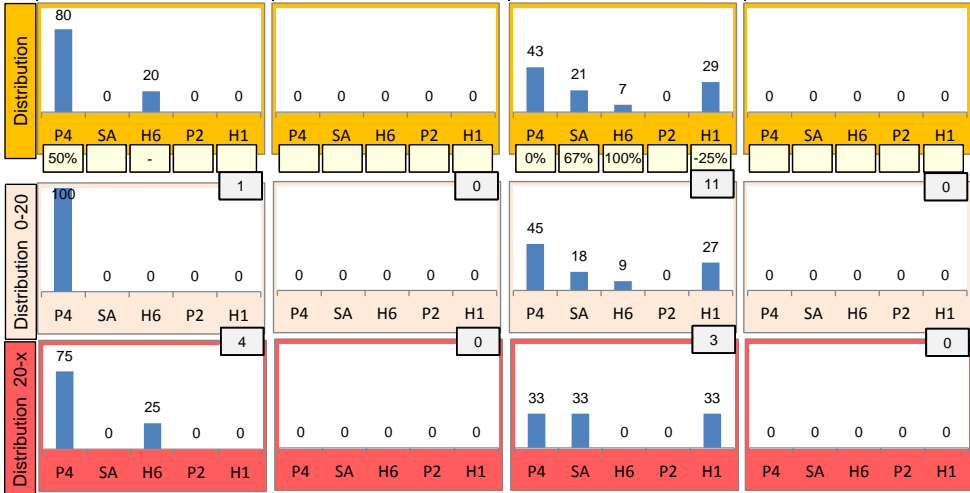
Distribution

Base K1 26% (5) Base K2 0% (0) Base K7 74% (14) Base KD 0% (0)

K1 after all R 25 20% 48% K1 after R#+ 19 16% 47% K2 Transition 20 30% 40%



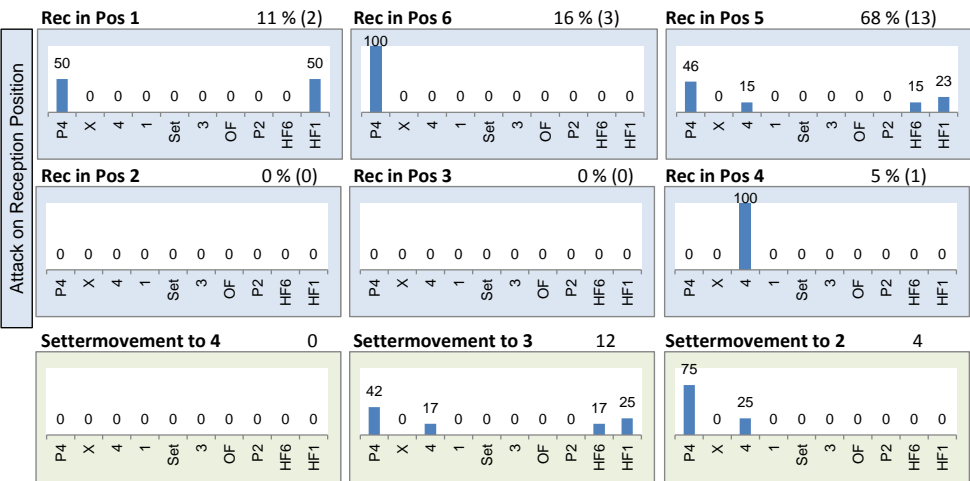
6	24%	2	8%	0	-	4	21%	2	11%	0	-	10	50%	0	-	0	-
0%	33%	0%	50%	-	-	-25%	25%	0%	50%	-	-	40%	50%	-	-	-	-
0	-	4	16%	13	52%	0	-	3	16%	10	53%	1	5%	0	-	9	45%
-	-	25%	50%	31%	54%	-	-	67%	67%	20%	50%	0%	0%	-	-	22%	33%



Reception	Σ	Σ %	=	= %	+	+ %	#	# %	+ # %	Eff
Czech Republic 2015	33	100%	5	15%	7	21%	12	36%	58%	42%
14 Bartos	14	42%	2	14%	3	21%	5	36%	57%	43%
19 Michalek	10	30%	2	20%	2	20%	5	50%	70%	50%
11 Krystof	3	9%	1	33%	2	67%	0	0%	67%	33%
13 Baránek	3	9%	0	0%	0	0%	1	33%	33%	33%
3 Mach	2	6%	0	0%	0	0%	1	50%	50%	50%
16 Fila	1	3%	0	0%	0	0%	0	0%	0%	0%

K1-Attacks after R#+	Σ	Σ %	=	= %	#	# %	Eff
Czech Republic 2015	19	100%	4	21%	9	47%	16%
14 Bartos	10	53%	1	10%	5	50%	20%
10 Finger	4	21%	2	50%	1	25%	-25%
3 Mach	3	16%	0	0%	2	67%	67%
13 Baránek	1	5%	0	0%	1	100%	100%
19 Michalek	1	5%	1	100%	0	0%	-100%
1 Vesely	0	0%	0	-	0	-	-
4 Pfeffer	0	0%	0	-	0	-	-

K2-Attacks - Transitor	Σ	Σ %	=	= %	#	# %	Eff
Czech Republic 2015	20	100%	1	5%	8	40%	30%
10 Finger	10	50%	1	10%	5	50%	40%
14 Bartos	9	45%	0	0%	3	33%	22%
18 Janouch	1	5%	0	0%	0	0%	0%
1 Vesely	0	0%	0	-	0	-	-
3 Mach	0	0%	0	-	0	-	-
4 Pfeffer	0	0%	0	-	0	-	-
5 Král	0	0%	0	-	0	-	-



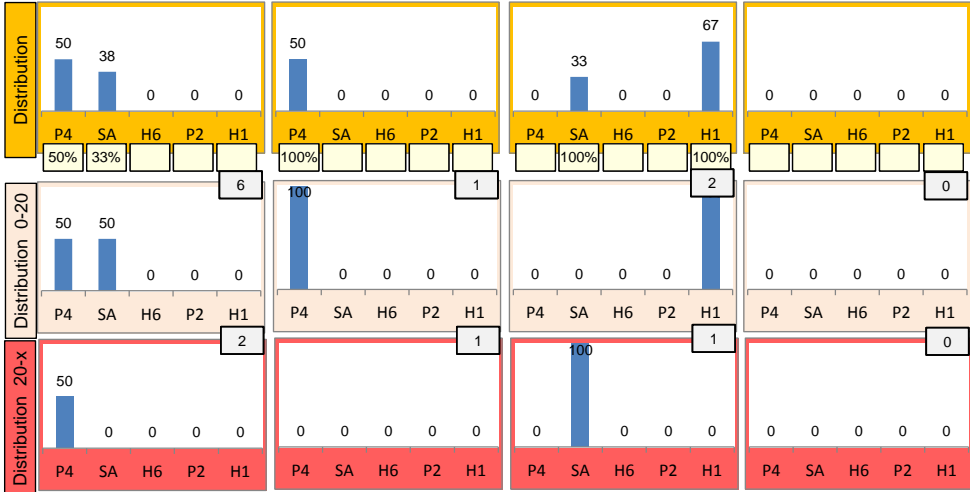
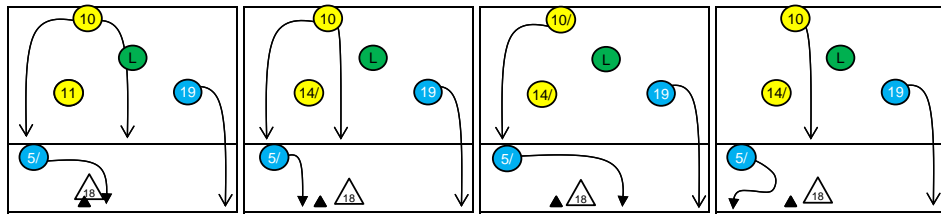
Rotation 3

Czech Republic 2015

Distribution

Base K1 62% (8) Base K2 15% (2) Base K7 23% (3) Base KD 0% (0)

K1 after all R 24 33% 50% K1 after R#+ 13 54% 69% K2 Transition 9 -11% 33%



Player	Attacks	%
7	29%	1
1	4%	0
0	-	0
43%	57%	-100%
0	-	6
6	25%	10
10	42%	33%
33%	50%	40%
40%	50%	50%

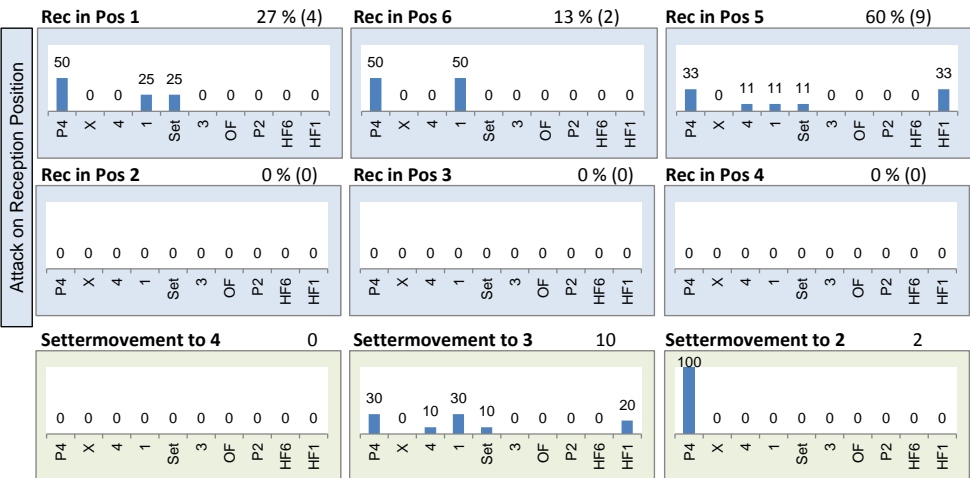
Player	Attacks	%
3	23%	0
0	-	0
0	-	0
67%	67%	-
0	-	4
4	31%	6
6	46%	50%
50%	75%	50%
50%	67%	67%

Player	Attacks	%
5	56%	1
1	11%	0
0	-	0
20%	60%	-100%
0	-	0
0	-	3
3	33%	-
-	-	-
-	-	-33%
-	-	0%

Reception	Σ	Σ %	=	= %	+	+ %	#	# %	+ # %	Eff
Czech Republic 2015	29	100%	1	3%	6	21%	9	31%	52%	48%
14 Bartos	8	28%	1	13%	1	13%	2	25%	38%	25%
19 Michalek	6	21%	0	0%	3	50%	3	50%	100%	100%
4 Pfeffer	5	17%	0	0%	0	0%	0	0%	0%	0%
11 Krystof	5	17%	0	0%	1	20%	1	20%	40%	40%
3 Mach	2	7%	0	0%	1	50%	1	50%	100%	100%
13 Baránek	2	7%	0	0%	0	0%	2	100%	100%	100%

K1-Attacks after R#+	Σ	Σ %	=	= %	#	# %	Eff
Czech Republic 2015	13	100%	0	0%	9	69%	54%
3 Mach	4	31%	0	0%	3	75%	50%
13 Baránek	4	31%	0	0%	2	50%	25%
10 Finger	3	23%	0	0%	2	67%	67%
19 Michalek	2	15%	0	0%	2	100%	100%
1 Vesely	0	0%	0	-	0	-	-
4 Pfeffer	0	0%	0	-	0	-	-
5 Král	0	0%	0	-	0	-	-

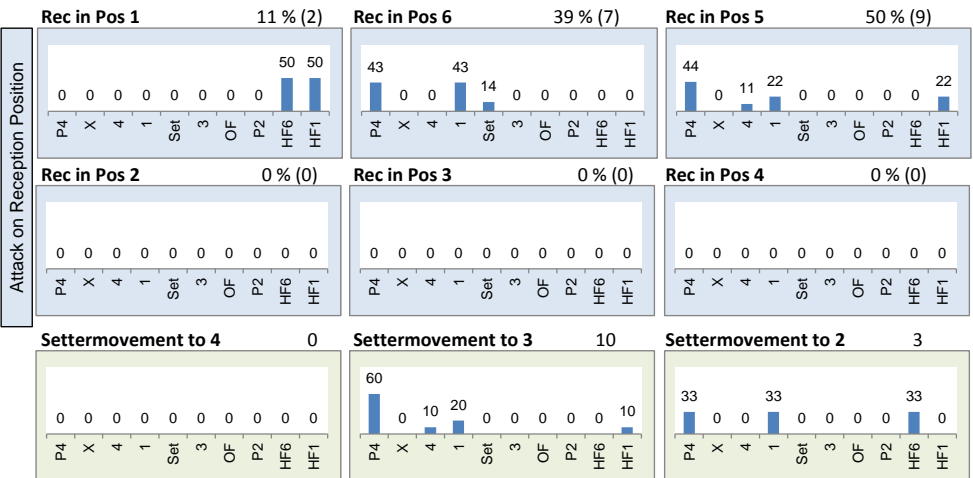
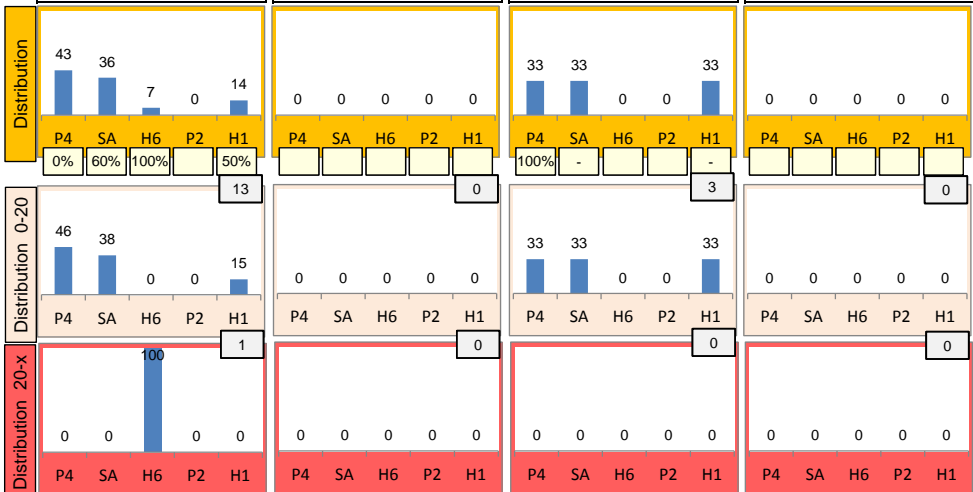
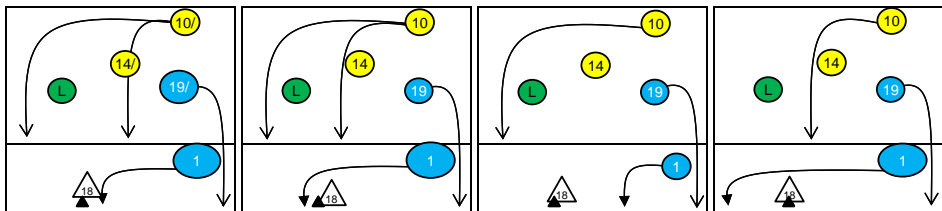
K2-Attacks - Transition	Σ	Σ %	=	= %	#	# %	Eff
Czech Republic 2015	9	100%	1	11%	3	33%	-11%
10 Finger	5	56%	0	0%	3	60%	20%
19 Michalek	3	33%	1	33%	0	0%	-33%
14 Bartos	1	11%	0	0%	0	0%	-100%
1 Vesely	0	0%	0	-	0	-	-
3 Mach	0	0%	0	-	0	-	-
4 Pfeffer	0	0%	0	-	0	-	-
5 Král	0	0%	0	-	0	-	-



Rotation 2

Czech Republic 2015

Base K1 82% (14) Base K2 0% (0) Base K7 18% (3) Base KD 0% (0)



Distribution

K1 after all R 30 0% 37% K1 after R#+ 17 24% 53% K2 Transition 17 6% 24%

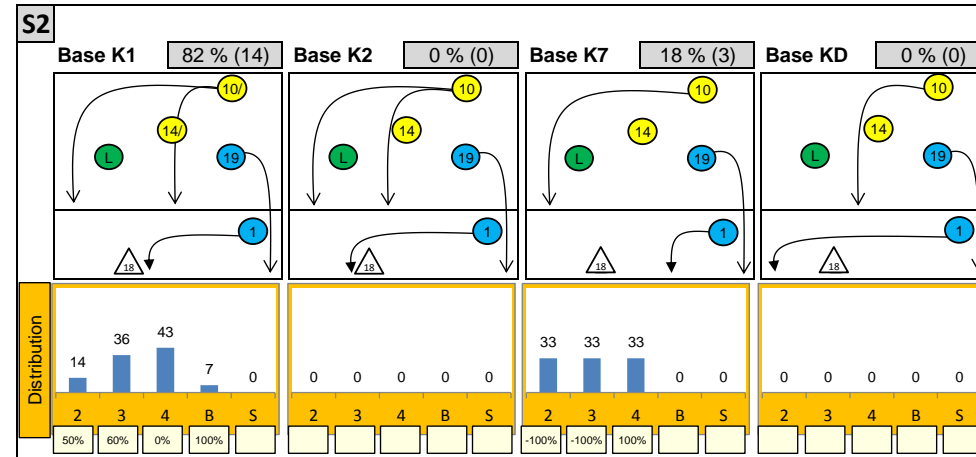
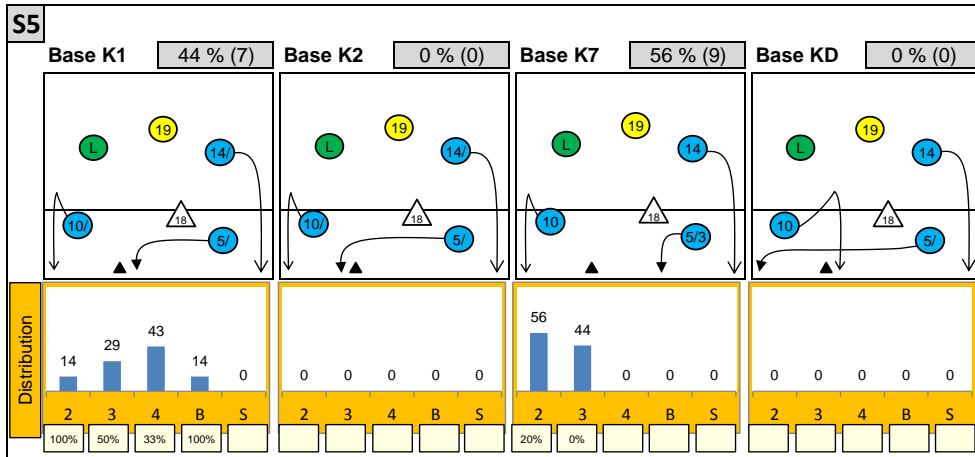
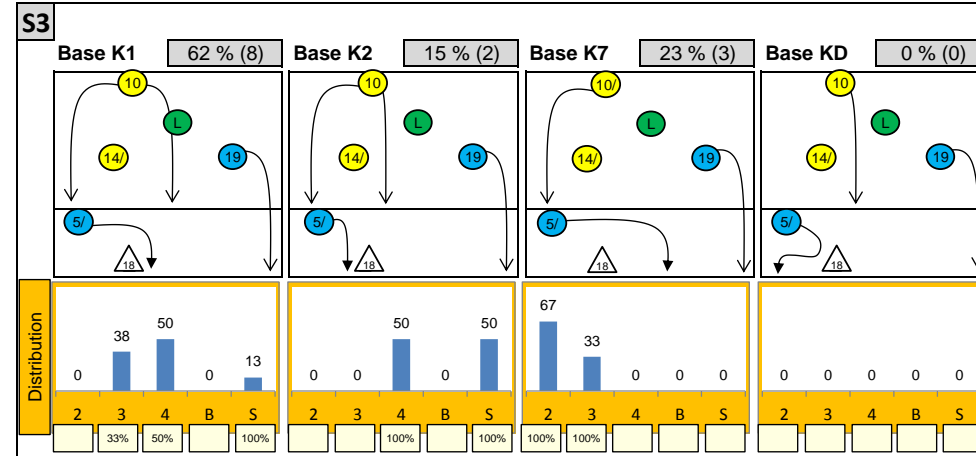
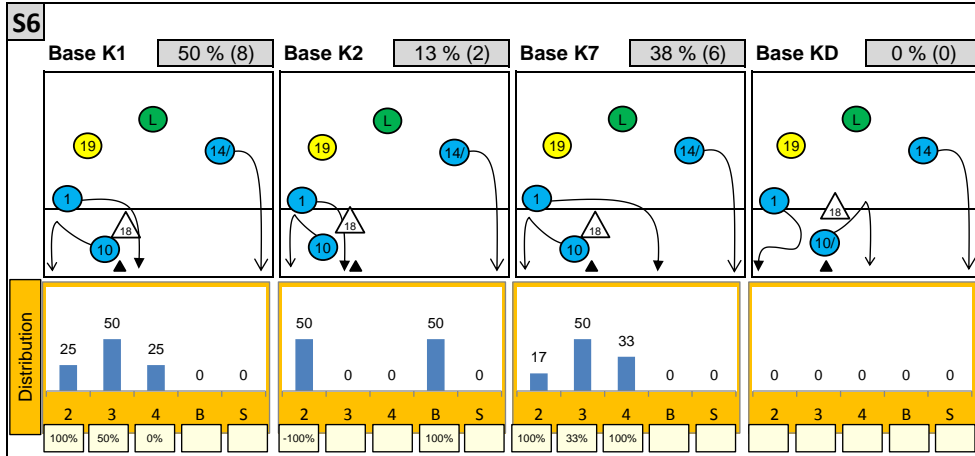
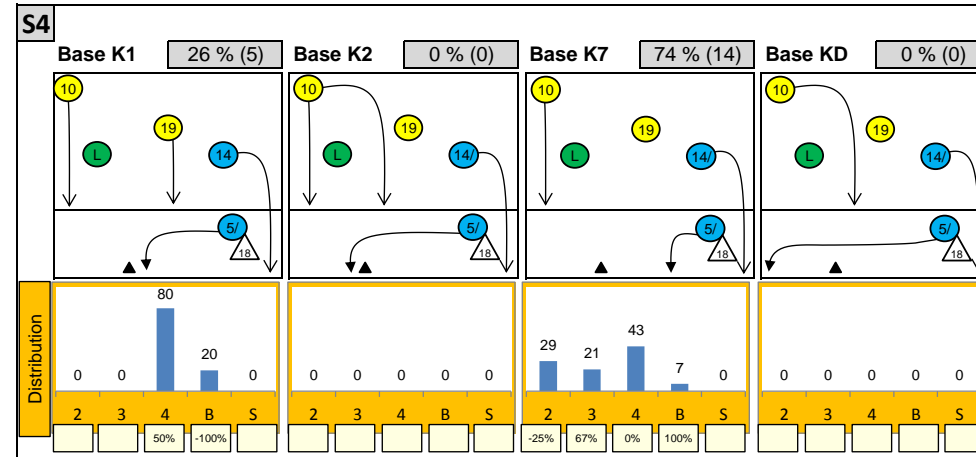
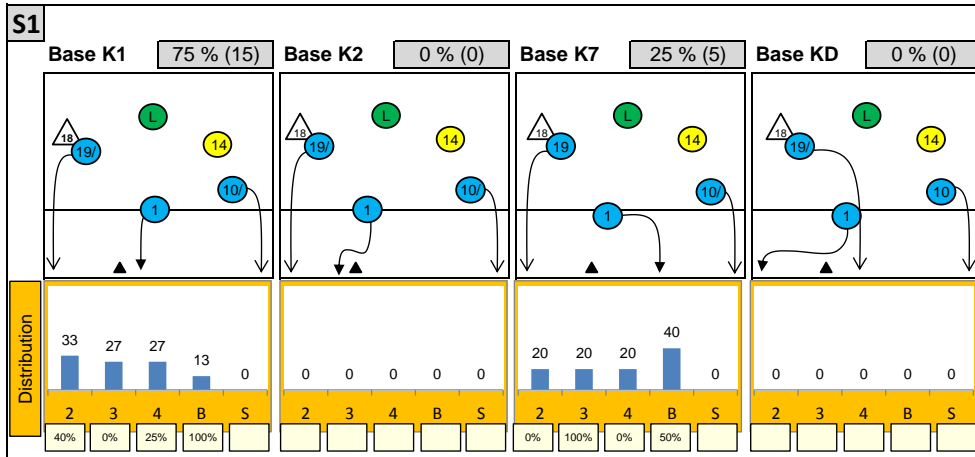
Category	9	2	0	3	1	0	4	3	0
%	30%	7%	-	18%	6%	-	24%	18%	-
Change	-22%	22%	0%	0%	33%	100%	0%	25%	25%
Count	0	6	13	0	6	7	0	2	8
%	-	20%	43%	-	35%	41%	-	12%	47%
Change	-	33%	67%	0%	33%	67%	14%	-50%	0%

Reception	Σ	Σ %	=	= %	+	+ %	#	# %	+ # %	Eff
Czech Republic 2015	37	100%	2	5%	10	27%	8	22%	49%	43%
14 Bartos	13	35%	2	15%	4	31%	2	15%	46%	31%
19 Michalek	11	30%	0	0%	4	36%	3	27%	64%	64%
13 Baránek	7	19%	0	0%	0	0%	2	29%	29%	29%
11 Krystof	4	11%	0	0%	0	0%	1	25%	25%	25%
4 Pfeffer	1	3%	0	0%	1	100%	0	0%	100%	100%
16 Fila	1	3%	0	0%	1	100%	0	0%	100%	100%

K1-Attacks after R#+	Σ	Σ %	=	= %	#	# %	Eff
Czech Republic 2015	17	100%	2	12%	9	53%	24%
1 Vesely	6	35%	1	17%	4	67%	33%
13 Baránek	4	24%	0	0%	1	25%	0%
10 Finger	3	18%	0	0%	1	33%	0%
19 Michalek	3	18%	1	33%	2	67%	33%
14 Bartos	1	6%	0	0%	1	100%	100%
3 Mach	0	0%	0	-	0	-	-
4 Pfeffer	0	0%	0	-	0	-	-

K2-Attacks - Transitor	Σ	Σ %	=	= %	#	# %	Eff
Czech Republic 2015	17	100%	1	6%	4	24%	6%
13 Baránek	6	35%	0	0%	2	33%	17%
14 Bartos	4	24%	0	0%	1	25%	25%
10 Finger	3	18%	0	0%	1	33%	33%
1 Vesely	2	12%	0	0%	0	0%	-50%
19 Michalek	2	12%	1	50%	0	0%	-50%
3 Mach	0	0%	0	-	0	-	-
4 Pfeffer	0	0%	0	-	0	-	-

Attackdistribution depending on Settercalls - Czech Republic 2015



2: Attack of Opposite

3: Attack of Middleblocker

4: Attack of Outside

B: Attack of Backrow

S: Attack of Setter

xx%: Efficiency of Attacks (-100% to +100%)

