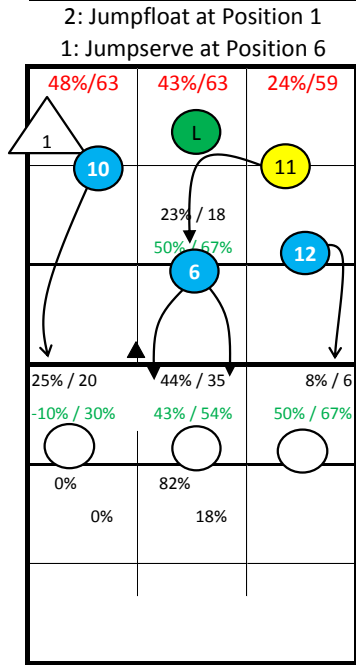


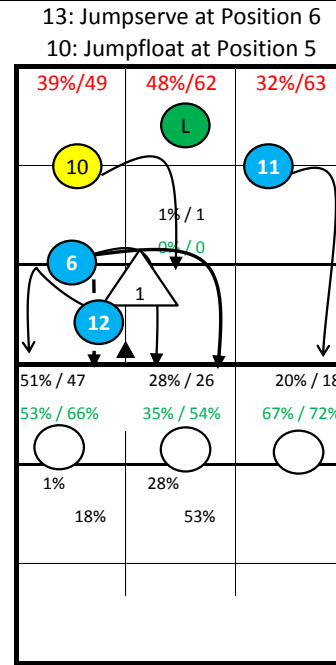
Roster

1 ABDELAZIZ	Set
2 HARSKAMP van	Set
4 HORST ter	Out
6 DIEFENBACH	MB
7 JORNA	Lib
8 BEMMELEN van	MB
10 RAUWERDINK	Out
11 KOOY	Out
12 DIJK van	Opp
13 GARDEREN van	Out
14 Klapwijk	Opp
15 KOELEWIJN	MB
17 BONTJE	MB
18 ANDRINGA	Lib

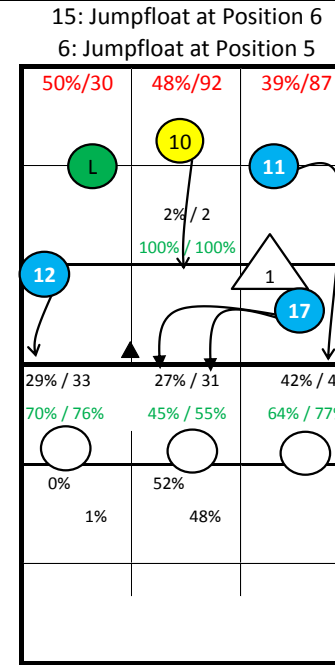
NETHERLANDS 2015



S1



S6



S5



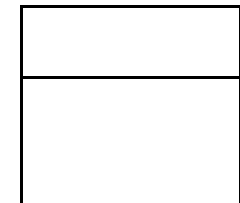
S1



S6



S5



S4

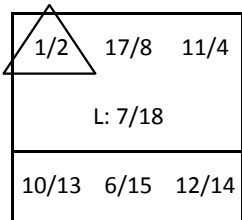


S3



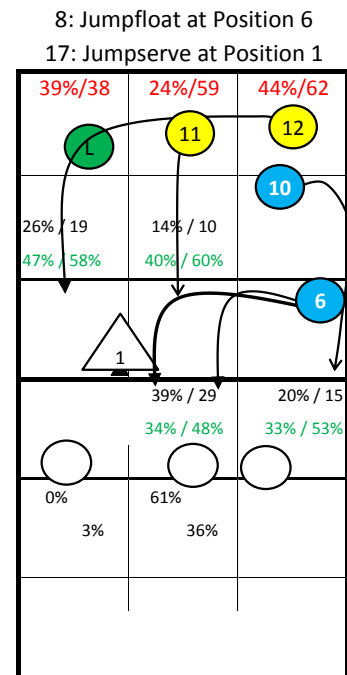
S2

Starting Lineup:

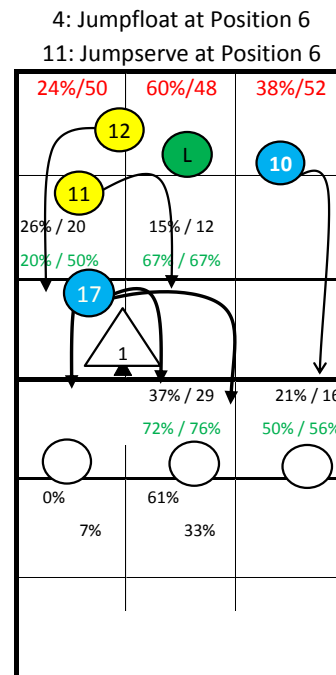


Rotation:

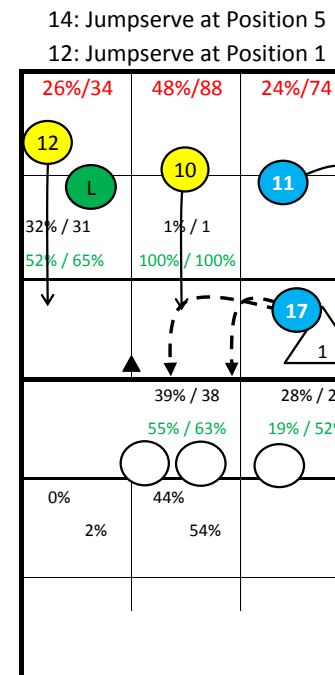
Ser: S5
Rec: S6



S2

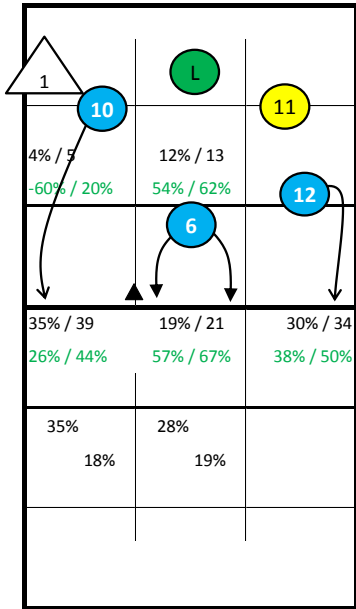


S3

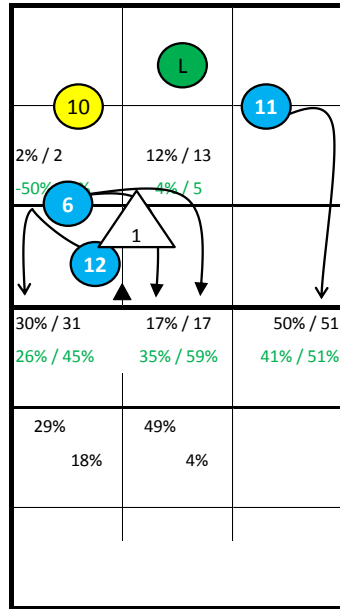


S4

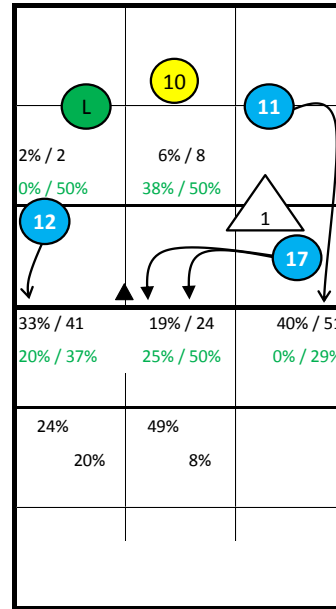
NETHERLANDS 2015 -



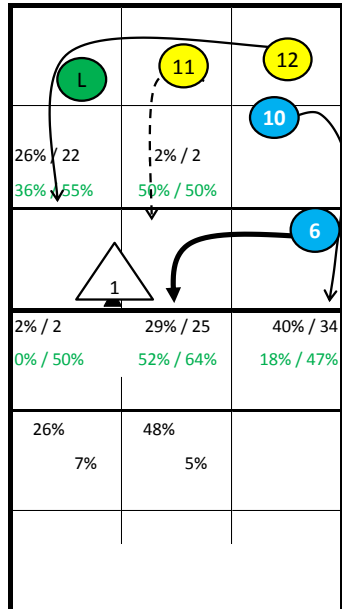
S1



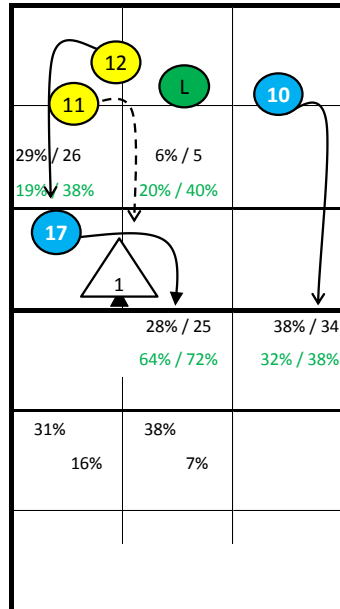
S6



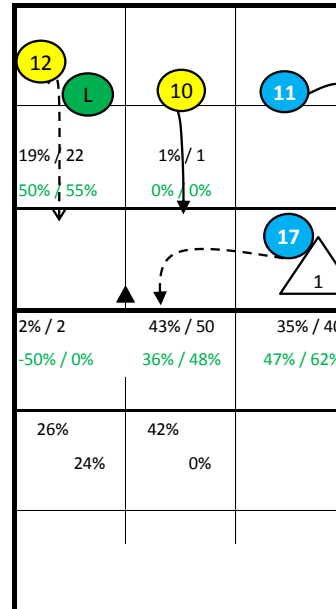
S5



S2



S3



S4

NETHERLANDS 2015 - all Statistics

pId Set	Points					Serve							Reception										Attack												
	pts	P/s	easy=	all=	W-L	Σ	=	-	+	#	=%	#%	eff%	Σ	in %	=	/	-	+	#	=/%	+#%	#%	eff%	Σ	in %	=	/	!	+	#	=/%	#%	eff%	
NETHERLANDS 2015	78	1265	16,2	492	1363	-98	1723	283	745	581	114	16%	7%	24%	1369	93	32	620	351	273	9%	46%	20%	36%	1867	159	147	127	158	961	16%	51%	35%		
1 ABDELAZIZ	75	141	1,9	105	201	-60	267	72	49	106	40	27%	15%	28%	9	1%	1	0	7	0	1	11%	11%	11%	0%	122	7%	12	5	7	8	74	14%	61%	47%
2 HARSKAMP van	16	1	0,1	5	17	-16	26	3	16	7	0	12%	0%	15%	1	0%	0	0	1	0	0	0%	0%	0%	0%	6	0%	0	2	0	2	1	33%	17%	-17%
4 HORST ter	24	44	1,8	17	43	1	51	7	24	18	2	14%	4%	25%	74	5%	4	4	48	10	8	11%	25%	11%	14%	78	4%	9	8	13	4	38	22%	49%	27%
6 DIEFENBACH	60	100	1,7	28	117	-17	220	19	128	67	6	9%	3%	25%	18	1%	2	1	9	1	5	17%	34%	28%	17%	107	6%	4	6	7	12	59	9%	55%	46%
7 JORNA	63	0			64	-64	0							275	20%	16	3	112	83	61	7%	52%	22%	45%	0										
8 BEMMELEN van	35	47	1,3	19	68	-21	95	13	59	22	1	14%	1%	11%	4	0%	0	0	2	2	0	0%	50%	0%	50%	58	3%	2	7	7	3	27	16%	47%	31%
10 RAUWERDINK	71	165	2,3	34	137	28	236	11	152	64	9	5%	4%	26%	406	30%	23	6	166	130	81	7%	52%	20%	45%	267	14%	20	21	20	23	127	15%	48%	32%
11 KOOY	65	255	3,9	105	255	0	225	50	79	77	19	22%	8%	20%	392	29%	37	13	180	83	79	13%	41%	20%	29%	426	23%	52	34	30	29	221	20%	52%	32%
12 DIJK van	68	270	4,0	85	184	86	247	47	73	108	19	19%	8%	32%	0										446	24%	36	34	23	42	230	16%	52%	36%	
13 GARDEREN van	15	14	0,9	14	32	-18	30	9	13	7	1	30%	3%	-3%	60	4%	3	4	24	16	13	12%	49%	22%	37%	33	2%	4	8	1	5	13	36%	39%	3%
14 KLAPWIJK	18	62	3,4	21	47	15	39	14	9	12	4	36%	10%	5%	1	0%	0	0	0	0	1	0%	100%	100%	100%	100	5%	7	8	7	10	54	15%	54%	39%
15 KOELEWIJN	38	52	1,4	15	59	-7	122	10	62	46	4	8%	3%	33%	6	0%	0	0	2	2	2	0%	66%	33%	67%	65	3%	4	2	3	5	31	9%	48%	38%
17 BONTJE	39	72	1,8	25	79	-7	112	16	60	31	5	14%	4%	18%	0										83	4%	5	2	8	9	49	8%	59%	51%	
18 ANDRINGA	20	7	0,4	2	8	-1	12	0	8	4	0	0%	0%	33%	33	2%	2	1	19	6	5	9%	33%	15%	24%	15	1%	2	0	1	0	6	13%	40%	27%

	Block						Defense						Freeball					Set		
	Σ	=	+	#	#%	eff%	Σ	=	/-!	+#	+#%	eff%	Σ	err	bad	god	eff%	Σ	=	eff%
NETHERLANDS 2015	910	434	168	190	21%	-4%	995	213	269	513	52%	30%	9	4	4	1	-56%	1725	30	90%
1 ABDELAZIZ	113	54	19	27	24%	-1%	156	37	35	84	54%	30%	0					1323	20	90%
2 HARSKAMP van	13	8	4	0	0%	-15%	13	3	5	5	38%	15%	0					161	1	93%
4 HORST ter	18	10	3	4	22%	-17%	18	5	5	8	44%	17%	0					2	0	100%
6 DIEFENBACH	161	81	24	35	22%	-9%	37	3	13	21	57%	49%	1	1	0	0	-100%	20	1	85%
7 JORNA	0						215	48	66	101	47%	25%	0					69	0	96%
8 BEMMELEN van	89	38	21	19	21%	2%	18	6	6	6	33%	0%	0					6	2	33%
10 RAUWERDINK	76	33	10	29	38%	13%	142	26	39	77	54%	36%	2	1	0	1	0%	37	2	76%
11 KOOY	102	52	18	15	15%	-16%	109	30	33	46	42%	15%	0					15	0	87%
12 DIJK van	97	41	23	21	22%	5%	125	25	36	64	51%	31%	4	1	3	0	-75%	17	0	88%
13 GARDEREN van	6	5	1	0	0%	-67%	21	3	1	17	81%	67%	0					1	0	100%
14 KLAPWIJK	26	14	5	4	15%	0%	14	4	1	9	64%	36%	0					4	0	50%
15 KOELEWIJN	82	39	12	17	21%	-9%	26	3	10	13	50%	38%	1	1	0	0	-100%	7	0	100%
17 BONTJE	112	50	23	18	16%	-7%	17	5	3	9	53%	24%	0					5	1	40%
18 ANDRINGA	4	2	1	1	25%	0%	16	2	2	12	75%	62%	0					4	0	75%

pId Set played Sets
 P/s Points per Set
 pts Points
 easy= easy errors (serve, net contact, ...)
 all= all errors
 W-L points - errors
 Σ sum of all events
 in % in percent of all team events

NETHERLANDS 2015 - Attack-Statistic

	K1 & K2 Attacks								K1 All Attacks								K2 Attacks								K1 aft R other Ply				K1 after own Rec			
	Σ	in %	=	/	#	=/%	#%	eff	Σ	in %	=	/	#	=/%	#%	eff	Σ	in %	=	/	#	=/%	#%	eff	sum	#	#%	eff	sum	#	#%	eff
NETHERLANDS 2015	1691		143	139	860	17%	51%	34%	1092		89	86	588	16%	54%	38%	599		54	53	272	18%	45%	28%	847	456	54%		204	109	53%	
12 DIJK van	441	26%	36	32	228	15%	52%	36%	282	26%	23	20	159	15%	56%	41%	159	27%	13	12	69	16%	43%	28%	282	159	56%	41%	0			
11 KOOY	413	24%	47	34	216	20%	52%	33%	260	24%	32	19	146	20%	56%	37%	153	26%	15	15	70	20%	46%	26%	149	88	59%	40%	111	58	52%	32%
10 RAUWERDINK	255	15%	19	21	121	16%	47%	32%	150	14%	9	14	72	15%	48%	33%	105	18%	10	7	49	16%	47%	30%	91	39	43%	30%	59	33	56%	37%
6 DIEFENBACH	100	6%	4	6	54	10%	54%	44%	81	7%	4	6	41	12%	51%	38%	19	3%	0	0	13	0%	68%	68%	78	39	50%	37%	3	2	67%	67%
14 KLAPWIJK	100	6%	7	8	54	15%	54%	39%	62	6%	6	6	30	19%	48%	29%	38	6%	1	2	24	8%	63%	55%	61	29	48%	28%	1	1	100%	100%
17 BONTJE	77	5%	5	2	46	9%	60%	51%	53	5%	3	2	35	9%	66%	57%	24	4%	2	0	11	8%	46%	38%	53	35	66%	57%	0			
4 HORST ter	76	4%	9	8	36	22%	47%	25%	45	4%	4	4	26	18%	58%	40%	31	5%	5	4	10	29%	32%	3%	26	16	62%	42%	19	10	53%	37%
15 KOELEWIJN	59	3%	3	2	28	8%	47%	39%	44	4%	1	1	23	5%	52%	48%	15	2%	2	1	5	20%	33%	13%	44	23	52%	48%	0			
8 BEMMELEN van	56	3%	2	7	26	16%	46%	30%	46	4%	2	5	21	15%	46%	30%	10	2%	0	2	5	20%	50%	30%	45	21	47%	31%	1	0	0%	0%
13 GARDEREN van	32	2%	4	8	12	38%	38%	0%	19	2%	2	6	8	42%	42%	0%	13	2%	2	2	4	31%	31%	0%	11	3	27%	-27%	8	5	63%	38%
18 ANDRINGA	14	1%	2	0	6	14%	43%	29%	9	1%	1	0	4	11%	44%	33%	5	1%	1	0	2	20%	40%	20%	7	4	57%	43%	2	0	0%	0%
1 ABDELAZIZ	8	0%	3	1	2	50%	25%	-25%	0								8	1%	3	1	2	50%	25%	-25%	0				0			
2 HASKAMP van	0							0								0								0				0				
7 JORNA	0							0								0								0				0				

	K1 after R#+								K1 after R-!								Freeball-Attacks							
	Σ	in %	=	/	#	=/%	#%	eff	Σ	in %	=	/	#	=/%	#%	eff	Σ	in %	=	/	#	=/%	#%	eff
NETHERLANDS 2015	578		44	40	357	15%	62%	47%	514		45	46	231	18%	45%	27%	203		18	18	98	18%	48%	31%
12 DIJK van	137	24%	11	6	93	12%	68%	55%	145	28%	12	14	66	18%	46%	28%	56	215%	6	2	26	14%	46%	32%
11 KOOY	135	23%	14	9	91	17%	67%	50%	125	24%	18	10	55	22%	44%	22%	45	173%	2	5	26	16%	58%	42%
10 RAUWERDINK	55	10%	5	7	27	22%	49%	27%	95	18%	4	7	45	12%	47%	36%	33	220%	3	2	15	15%	45%	30%
6 DIEFENBACH	57	10%	2	5	31	12%	54%	42%	24	5%	2	1	10	13%	42%	29%	8	160%	0	0	5	0%	62%	62%
14 KLAPWIJK	29	5%	2	2	16	14%	55%	41%	33	6%	4	4	14	24%	42%	18%	14	200%	1	2	7	21%	50%	29%
17 BONTJE	46	8%	3	2	32	11%	70%	59%	7	1%	0	0	3	0%	43%	43%	13	325%	2	0	4	15%	31%	15%
4 HORST ter	17	3%	3	1	11	24%	65%	41%	28	5%	1	3	15	14%	54%	39%	9	180%	1	1	5	22%	56%	33%
15 KOELEWIJN	38	7%	1	1	21	5%	55%	50%	6	1%	0	0	2	0%	33%	33%	8	267%	2	1	3	38%	38%	0%
8 BEMMELEN van	37	6%	1	4	19	14%	51%	38%	9	2%	1	1	2	22%	22%	0%	4	400%	0	2	1	50%	25%	-25%
13 GARDEREN van	9	2%	0	2	5	22%	56%	33%	10	2%	2	4	3	60%	30%	-30%	3	300%	1	1	1	67%	33%	-33%
18 ANDRINGA	3	1%	1	0	1	33%	33%	0%	6	1%	0	0	3	0%	50%	50%	1	100%	0	0	1	0%	100%	100%
1 ABDELAZIZ	0							0								2	0	0	1	0	50%	0%	-50%	
2 HASKAMP van	0							0								0								
7 JORNA	0							0								0								

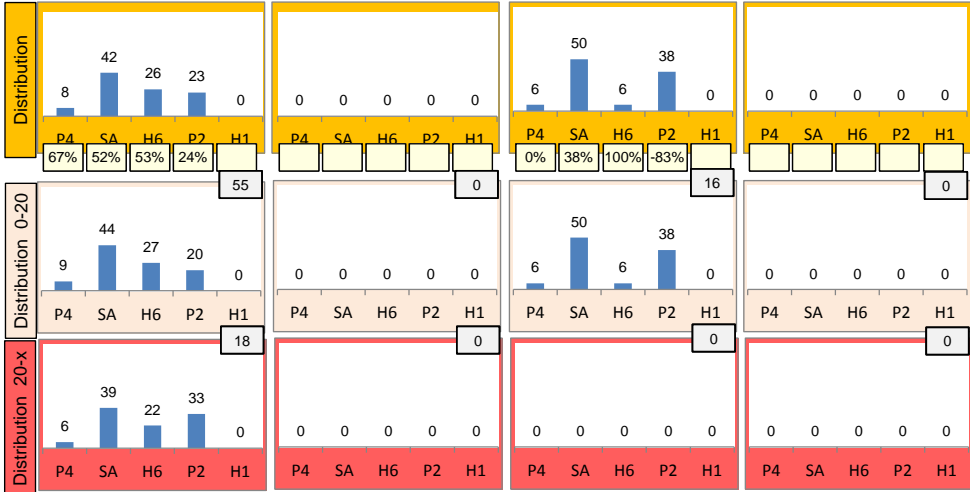
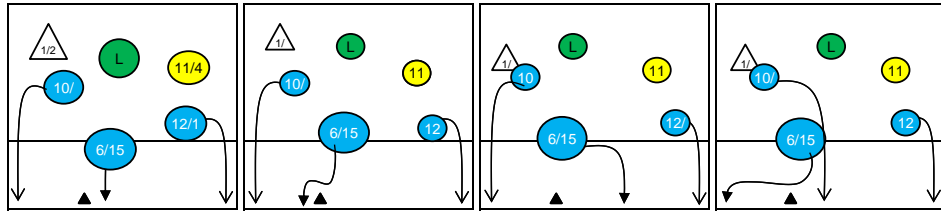
Rotation 1

NETHERLANDS 2015

Distribution

Base K1 82% (73) Base K2 0% (0) Base K7 18% (16) Base KD 0% (0)

K1 after all R 185 33% 49% K1 after R#+ 90 38% 57% K2 Transition 114 32% 50%

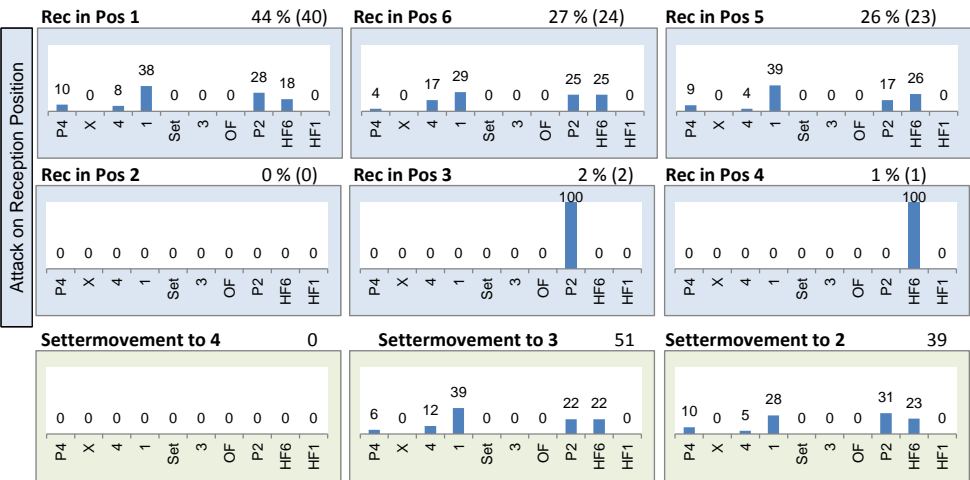


0	-	26	14%	0	-	0	-	20	22%	0	-	5	4%	13	11%	0	-
-	-	31%	54%	-	-	-	-	55%	70%	-	-	-60%	20%	54%	62%	-	-
55	30%	53	29%	51	28%	23	26%	39	43%	8	9%	43	38%	13	11%	40	35%
27%	49%	40%	51%	33%	43%	-4%	35%	49%	59%	62%	75%	23%	44%	69%	69%	33%	50%

Reception	Σ	Σ %	=/	=/ %	+	+ %	#	# %	+ # %	Eff
NETHERLANDS 2015	226	100%	23	10%	60	27%	34	15%	42%	31%
7 JORNA	63	28%	5	8%	22	35%	10	16%	51%	43%
10 RAUWERDINK	63	28%	3	5%	20	32%	13	21%	52%	48%
11 KOOY	59	26%	9	15%	14	24%	9	15%	39%	24%
4 HORST ter	9	4%	3	33%	0	0%	0	0%	0%	-33%
13 GARDEREN van	6	3%	2	33%	0	0%	1	17%	17%	-17%
18 ANDRINGA	5	2%	0	0%	1	20%	0	0%	20%	20%

K1-Attacks after R#+	Σ	Σ %	=	= %	#	# %	Eff
NETHERLANDS 2015	90	100%	7	8%	51	57%	38%
10 RAUWERDINK	19	21%	2	11%	7	37%	0%
6 DIEFENBACH	18	20%	0	0%	11	61%	56%
11 KOOY	18	20%	2	11%	12	67%	50%
8 BEMMELEN van	14	16%	0	0%	7	50%	36%
17 BONTJE	6	7%	0	0%	4	67%	50%
12 DIJK van	5	6%	1	20%	3	60%	40%
14 KLAPWIJK	3	3%	0	0%	3	100%	100%

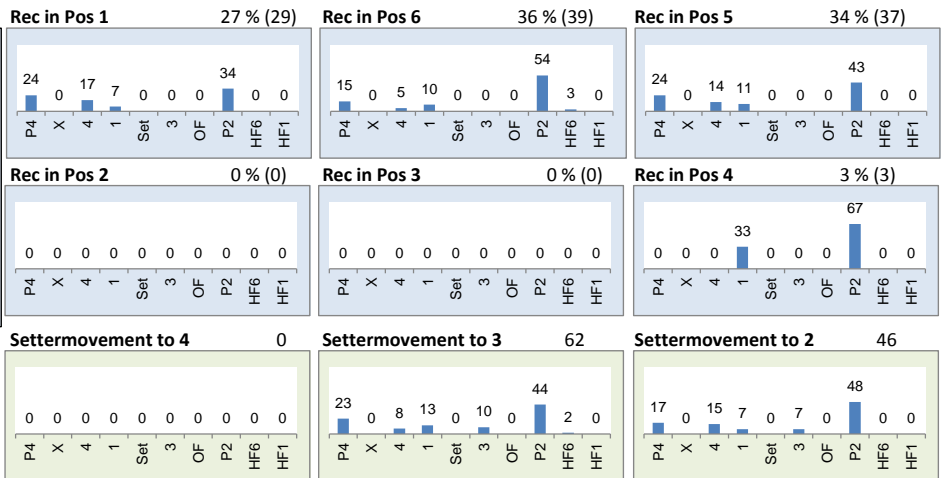
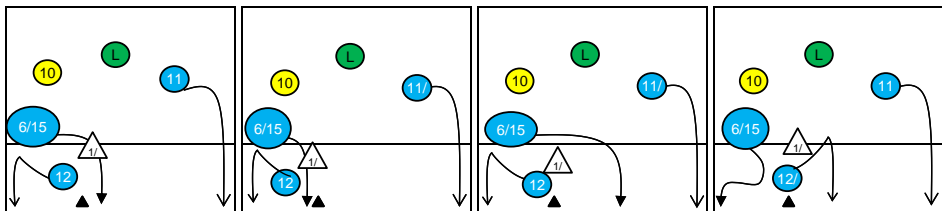
K2-Attacks - Transition	Σ	Σ %	=	= %	#	# %	Eff
NETHERLANDS 2015	114	100%	11	10%	57	50%	32%
12 DIJK van	36	32%	3	8%	15	42%	25%
10 RAUWERDINK	35	31%	3	9%	17	49%	34%
11 KOOY	18	16%	3	17%	9	50%	22%
6 DIEFENBACH	9	8%	0	0%	6	67%	67%
13 GARDEREN van	3	3%	1	33%	2	67%	33%
14 KLAPWIJK	3	3%	0	0%	3	100%	100%
17 BONTJE	3	3%	0	0%	2	67%	67%



Rotation 6

NETHERLANDS 2015

Base K1 28 % (31) Base K2 18 % (20) Base K7 53 % (58) Base KD 1 % (1)



Distribution

K1 after all R 185 45% 58% K1 after R#+ 108 54% 65% K2 Transition 110 30% 46%

Category	0	1	2	3	4	5	6	7	8	9	10	11	12
0	-	4	2%	0	-	0	-	0	-	0	-	0	-
1	-	-	50%	50%	-	-	-	-	-	-	-	-	-
2	82	44%	43	23%	56	30%	53	49%	32	30%	22	20%	42
3	46%	60%	42%	56%	45%	59%	57%	68%	38%	53%	73%	77%	26%

Reception	Σ	Σ %	=	= %	+	+ %	#	# %	+ # %	Eff
NETHERLANDS 2015	228	100%	26	11%	64	28%	45	20%	48%	36%
11 KOOY	63	28%	7	11%	15	24%	12	19%	43%	32%
7 JORNA	62	27%	7	11%	19	31%	18	29%	60%	48%
10 RAUWERDINK	49	21%	7	14%	19	39%	7	14%	53%	39%
4 HORST ter	16	7%	2	13%	1	6%	1	6%	13%	0%
13 GARDEREN van	8	4%	0	0%	4	50%	2	25%	75%	75%
18 ANDRINGA	7	3%	1	14%	1	14%	2	29%	43%	29%

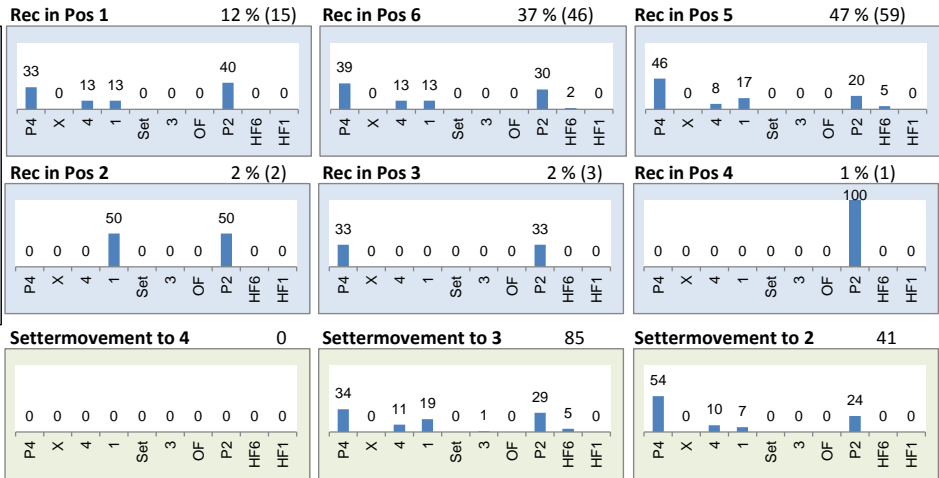
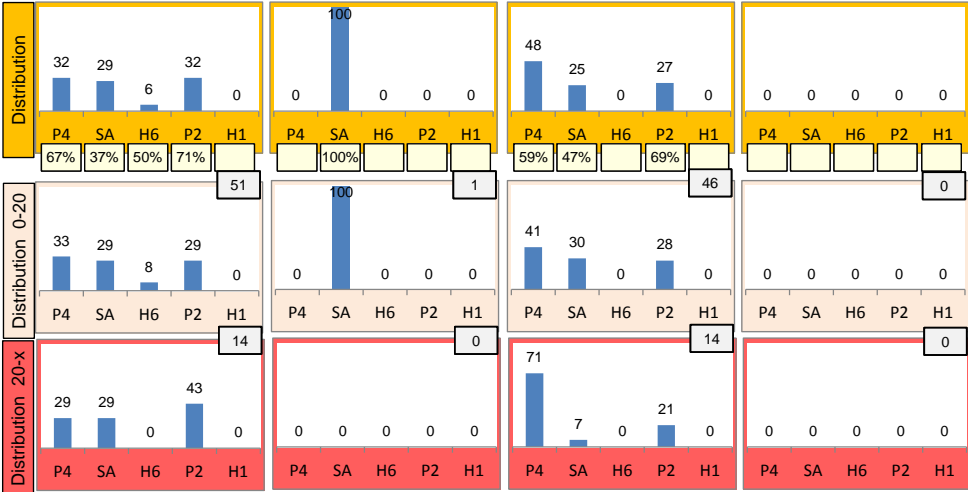
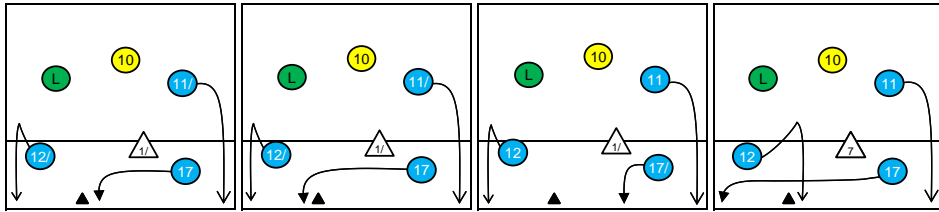
K1-Attacks after R#+	Σ	Σ %	=	= %	#	# %	Eff
NETHERLANDS 2015	108	100%	5	5%	70	65%	54%
12 DIJK van	38	35%	3	8%	26	68%	58%
6 DIEFENBACH	21	19%	2	10%	11	52%	38%
11 KOOY	20	19%	0	0%	15	75%	70%
14 KLAPWIJK	11	10%	0	0%	6	55%	36%
8 BEMMELEN van	9	8%	0	0%	4	44%	22%
4 HORST ter	2	2%	0	0%	2	100%	100%
10 RAUWERDINK	1	1%	0	0%	0	0%	0%

K2-Attacks - Transitor	Σ	Σ %	=	= %	#	# %	Eff
NETHERLANDS 2015	110	100%	6	5%	51	46%	30%
11 KOOY	49	45%	0	0%	24	49%	37%
12 DIJK van	28	25%	2	7%	13	46%	25%
14 KLAPWIJK	13	12%	1	8%	6	46%	31%
4 HORST ter	5	5%	1	20%	2	40%	20%
6 DIEFENBACH	4	4%	0	0%	3	75%	75%
8 BEMMELEN van	4	4%	0	0%	1	25%	0%
10 RAUWERDINK	3	3%	1	33%	0	0%	-33%

Rotation 5

NETHERLANDS 2015

Base K1 52 % (65) Base K2 1 % (1) Base K7 48 % (60) Base KD 0 % (0)



Distribution

K1 after all R 222 42% 57% K1 after R#+ 126 59% 69% K2 Transition 131 13% 35%

Category	0	-	4	2%	0	-
0	-	-	50%	75%	-	-
71	32%	38	17%	109	49%	
44%	59%	39%	47%	42%	58%	

Reception	Σ	Σ %	=	= %	+	+ %	#	# %	+ # %	Eff
NETHERLANDS 2015	259	100%	18	7%	69	27%	58	22%	49%	42%
10 RAUWERDINK	92	36%	6	7%	28	30%	22	24%	54%	48%
11 KOOY	87	34%	6	7%	17	20%	23	26%	46%	39%
7 JORNA	30	12%	0	0%	10	33%	5	17%	50%	50%
4 HORST ter	18	7%	2	11%	3	17%	2	11%	28%	17%
13 GARDEREN van	11	4%	2	18%	4	36%	2	18%	55%	36%
18 ANDRINGA	6	2%	1	17%	3	50%	2	33%	83%	67%

K1-Attacks after R#+	Σ	Σ %	=	= %	#	# %	Eff
NETHERLANDS 2015	126	100%	6	5%	87	69%	59%
11 KOOY	45	36%	3	7%	33	73%	60%
12 DIJK van	29	23%	0	0%	23	79%	76%
15 KOELEWIJN	17	13%	0	0%	7	41%	35%
17 BONTJE	15	12%	2	13%	9	60%	47%
14 KLAPWIJK	6	5%	0	0%	4	67%	67%
4 HORST ter	5	4%	0	0%	5	100%	100%
10 RAUWERDINK	3	2%	0	0%	2	67%	33%

K2-Attacks - Transition	Σ	Σ %	=	= %	#	# %	Eff
NETHERLANDS 2015	131	100%	16	12%	46	35%	13%
11 KOOY	47	36%	8	17%	14	30%	2%
12 DIJK van	39	30%	4	10%	14	36%	21%
4 HORST ter	11	8%	1	9%	1	9%	-27%
17 BONTJE	8	6%	1	13%	4	50%	38%
14 KLAPWIJK	6	5%	0	0%	3	50%	50%
10 RAUWERDINK	5	4%	0	0%	3	60%	60%
1 ABDELAZIZ	4	3%	2	50%	2	50%	0%

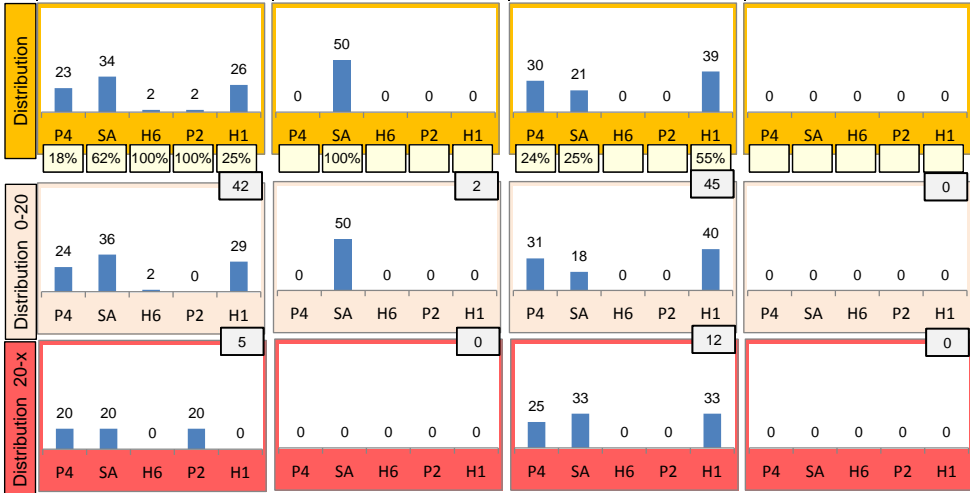
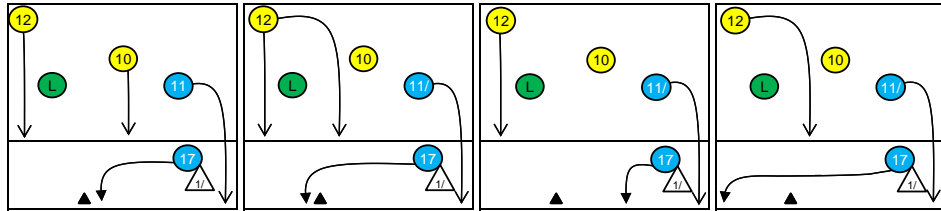
Rotation 4

NETHERLANDS 2015

Distribution

Base K1 44 % (47) Base K2 2 % (2) Base K7 54 % (57) Base KD 0 % (0)

K1 after all R 181 34% 54% K1 after R#+ 93 40% 59% K2 Transition 89 42% 54%

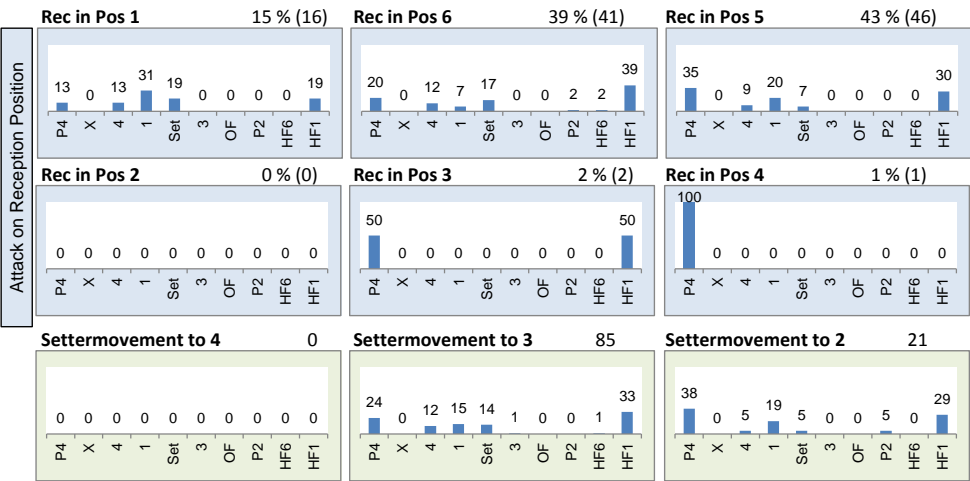


Category	Player	#	%	Eff		
K1 after all R	65	36%	2	1%	0	-
	32%	54%	100%	100%	-	-
	1	1%	35	19%	78	43%
	100%	100%	49%	57%	26%	51%
	34	37%	1	1%	0	-
K1 after R#+	34	37%	1	1%	0	-
	44%	62%	100%	100%	-	-
	1	1%	29	31%	28	30%
	100%	100%	48%	59%	21%	54%
	24	27%	2	2%	0	-
K2 Transition	46%	54%	0%	0%	-	-
	2	2%	16	18%	45	51%
	-50%	0%	38%	44%	47%	62%

Reception	Σ	Σ %	=	= %	+	+ %	#	# %	+ # %	Eff
NETHERLANDS 2015	240	100%	25	10%	61	25%	46	19%	45%	34%
10 RAUWERDINK	88	37%	7	8%	31	35%	18	20%	56%	48%
11 KOOY	74	31%	13	18%	13	18%	18	24%	42%	24%
7 JORNA	34	14%	4	12%	9	26%	4	12%	38%	26%
13 GARDEREN van	11	5%	1	9%	1	9%	1	9%	18%	9%
4 HORST ter	9	4%	0	0%	2	22%	0	0%	22%	22%
15 KOELEWIJN	5	2%	0	0%	2	40%	1	20%	60%	60%

K1-Attacks after R#+	Σ	Σ %	=	= %	#	# %	Eff
NETHERLANDS 2015	93	100%	13	14%	55	59%	40%
12 DIJK van	28	30%	3	11%	20	71%	57%
11 KOOY	27	29%	6	22%	15	56%	22%
17 BONTJE	13	14%	1	8%	9	69%	54%
15 KOELEWIJN	11	12%	1	9%	6	55%	45%
14 KLAPWIJK	5	5%	2	40%	0	0%	-40%
8 BEMMELEN van	3	3%	0	0%	2	67%	67%
4 HORST ter	2	2%	0	0%	1	50%	50%

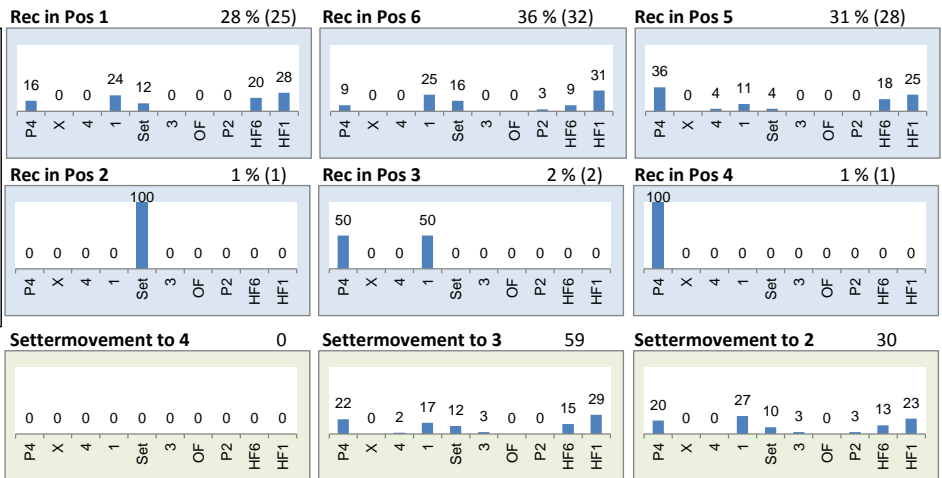
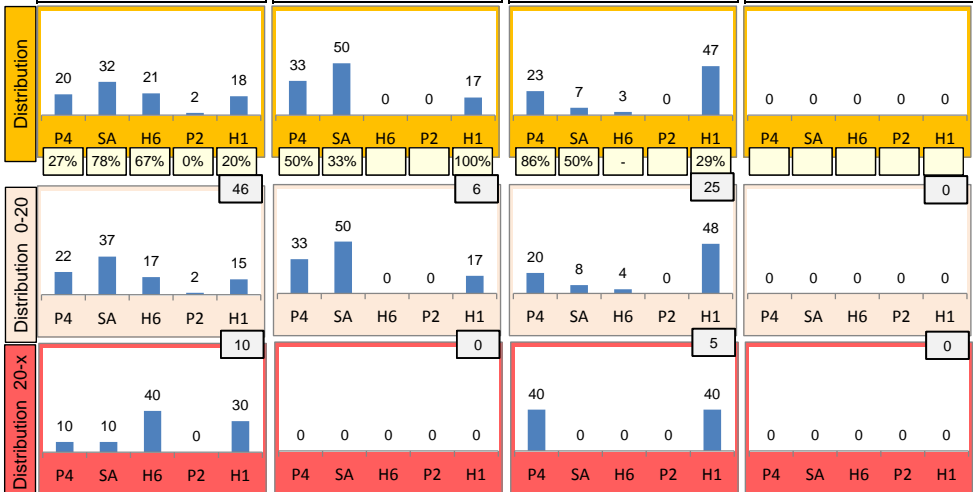
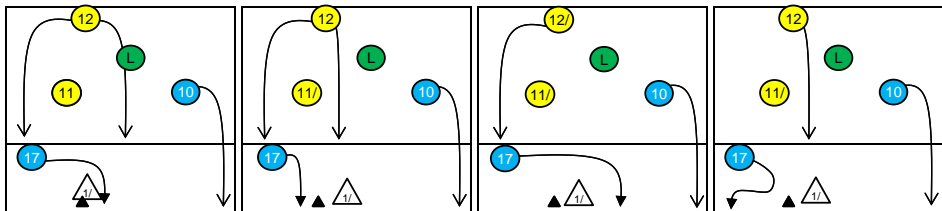
K2-Attacks - Transitor	Σ	Σ %	=	= %	#	# %	Eff
NETHERLANDS 2015	89	100%	6	7%	48	54%	42%
11 KOOY	32	36%	2	6%	21	66%	53%
12 DIJK van	20	22%	1	5%	10	50%	45%
4 HORST ter	10	11%	2	20%	5	50%	30%
17 BONTJE	9	10%	0	0%	3	33%	33%
15 KOELEWIJN	5	6%	1	20%	2	40%	20%
1 ABDELAZIZ	3	3%	0	0%	0	0%	-33%
10 RAUWERDINK	3	3%	0	0%	1	33%	0%



Rotation 3

NETHERLANDS 2015

Base K1 61% (56) Base K2 7% (6) Base K7 33% (30) Base KD 0% (0)



Distribution

K1 after all R 145 43% 56% K1 after R# 79 51% 62% K2 Transition 82 26% 39%

K1 after all R						K1 after R#						K2 Transition					
46	32%	16	11%	0	-	24	30%	13	16%	0	-	29	35%	5	6%	0	-
39%	57%	50%	63%	-	-	29%	54%	54%	62%	-	-	28%	45%	20%	40%	-	-
2	1%	25	17%	56	39%	1	1%	22	28%	19	24%	2	2%	8	10%	38	46%
50%	50%	68%	72%	32%	46%	0%	0%	73%	77%	53%	58%	50%	50%	-12%	13%	32%	39%

Reception	Σ	Σ %	=	= %	+	+ %	#	# %	+ # %	Eff
NETHERLANDS 2015	195	100%	20	10%	49	25%	40	21%	46%	35%
10 RAUWERDINK	52	27%	6	12%	17	33%	9	17%	50%	38%
11 KOOY	50	26%	7	14%	11	22%	8	16%	38%	24%
7 JORNA	48	25%	1	2%	15	31%	15	31%	63%	60%
4 HORST ter	12	6%	1	8%	1	8%	1	8%	17%	8%
13 GARDEREN van	10	5%	2	20%	2	20%	1	10%	30%	10%
18 ANDRINGA	3	2%	0	0%	0	0%	0	0%	0%	0%

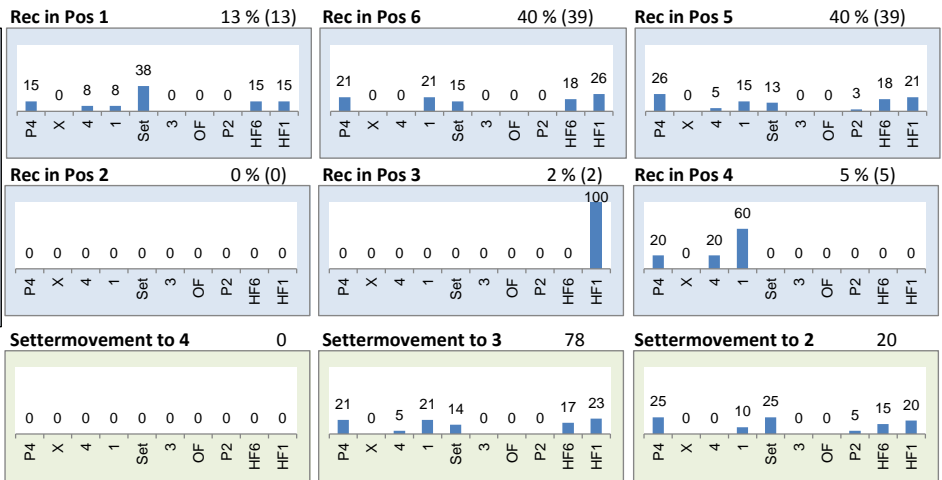
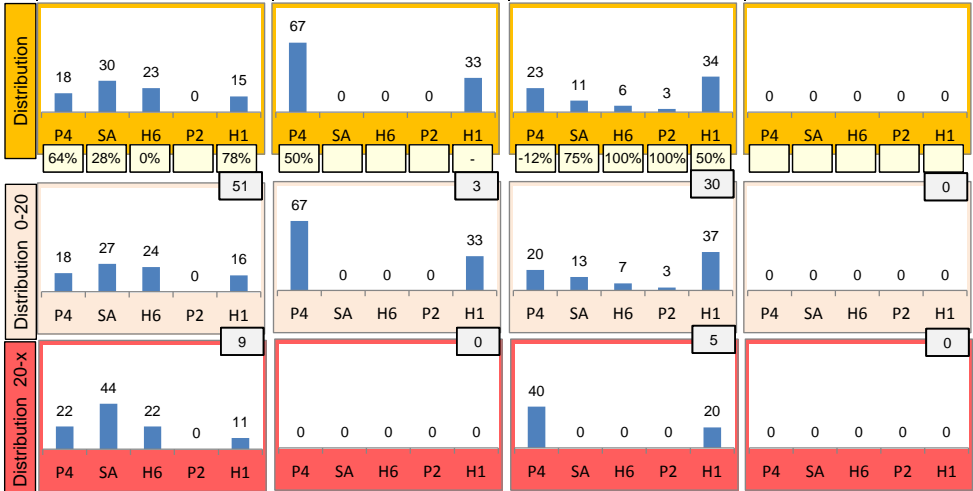
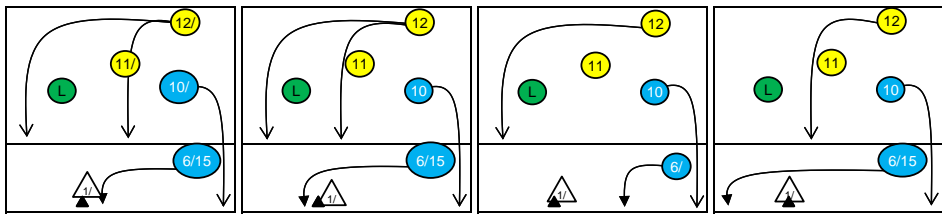
K1-Attacks after R#	Σ	Σ %	=	= %	#	# %	Eff
NETHERLANDS 2015	79	100%	5	6%	49	62%	51%
12 DIJK van	20	25%	3	15%	10	50%	20%
10 RAUWERDINK	17	22%	1	6%	9	53%	47%
11 KOOY	13	16%	1	8%	8	62%	54%
17 BONTJE	10	13%	0	0%	8	80%	80%
15 KOELEWIJN	8	10%	0	0%	6	75%	75%
8 BEMMELEN van	3	4%	0	0%	3	100%	100%
14 KLAPWIJK	2	3%	0	0%	1	50%	50%

K2-Attacks - Transition	Σ	Σ %	=	= %	#	# %	Eff
NETHERLANDS 2015	82	100%	6	7%	32	39%	26%
10 RAUWERDINK	29	35%	2	7%	13	45%	38%
12 DIJK van	21	26%	2	10%	9	43%	24%
13 GARDEREN van	7	9%	0	0%	1	14%	0%
14 KLAPWIJK	7	9%	0	0%	5	71%	71%
15 KOELEWIJN	5	6%	0	0%	1	20%	20%
11 KOOY	3	4%	0	0%	1	33%	33%
4 HORST ter	2	2%	1	50%	1	50%	0%

Rotation 2

NETHERLANDS 2015

Base K1 61% (60) Base K2 3% (3) Base K7 36% (35) Base KD 0% (0)



Distribution

K1 after all R 174 30% 49% K1 after R#+ 82 37% 55% K2 Transition 73 29% 52%

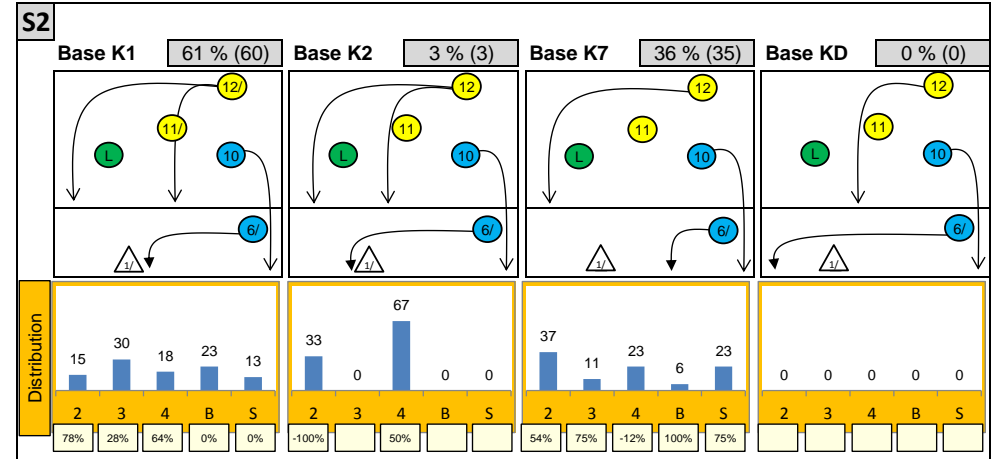
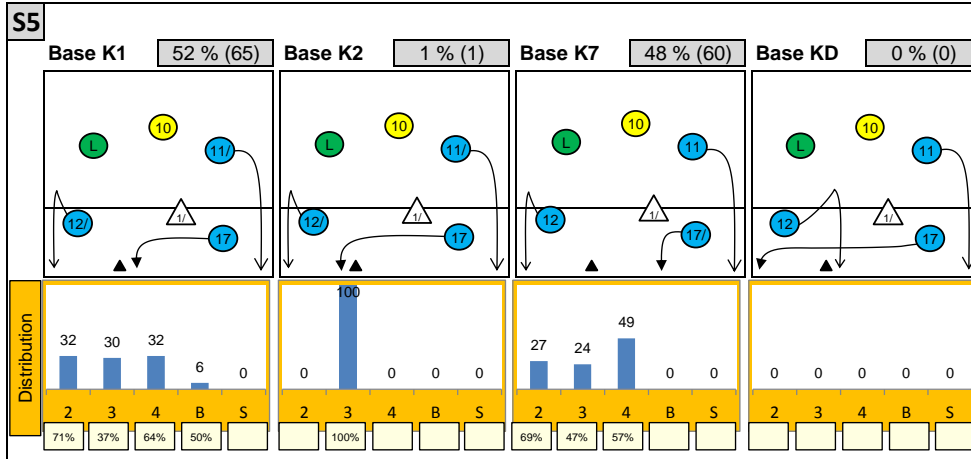
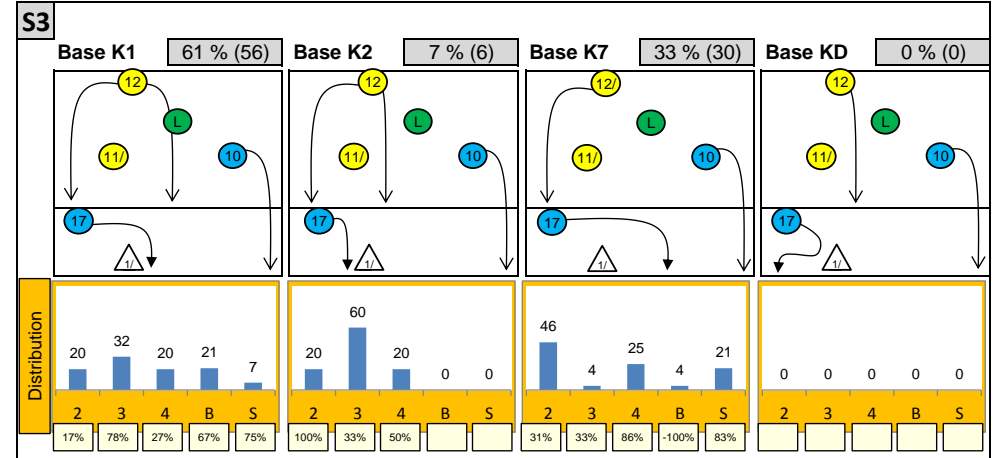
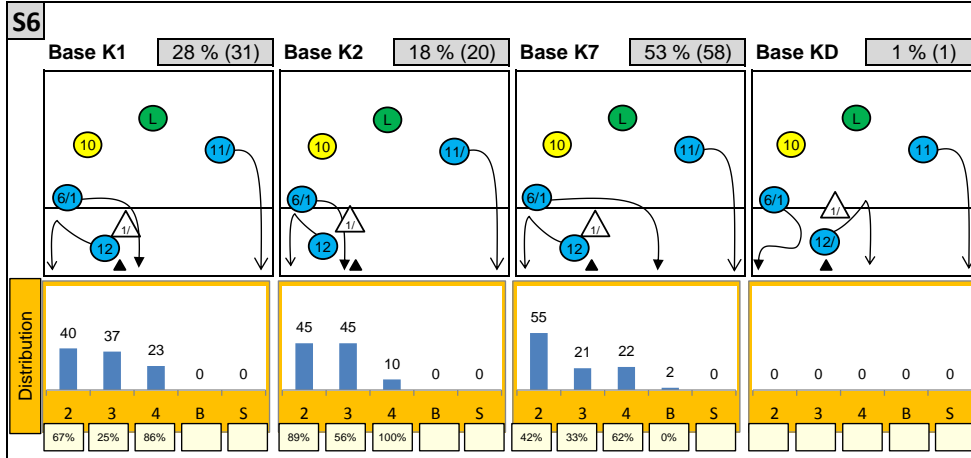
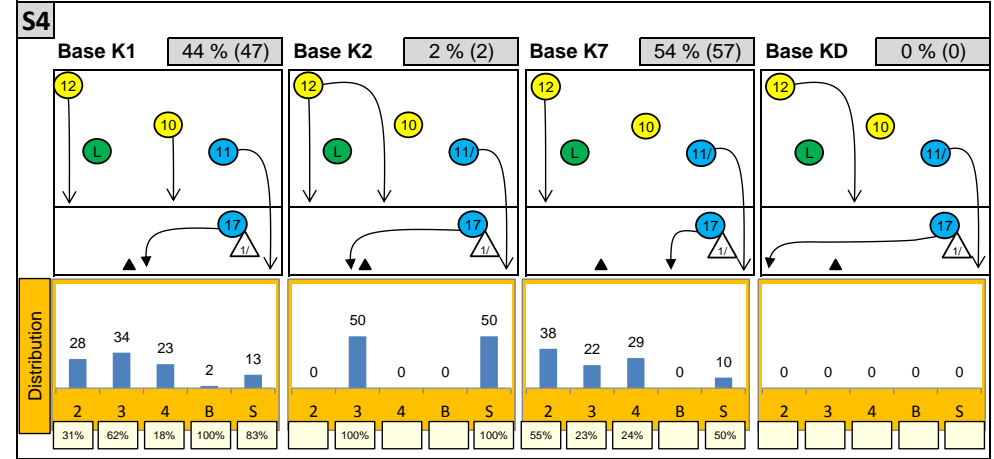
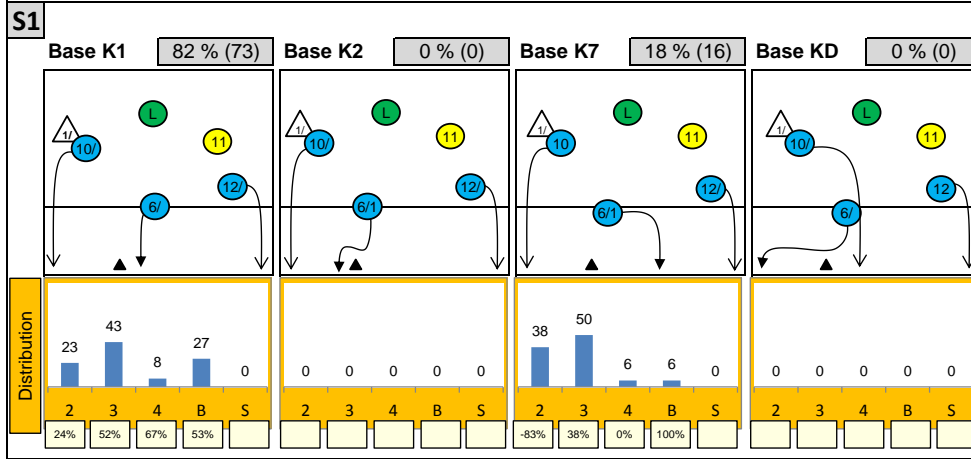
57	33%	23	13%	0	-	22	27%	16	20%	0	-	24	33%	2	3%	1	1%
40%	56%	17%	48%	-	-	55%	64%	12%	50%	-	-	42%	58%	50%	50%	-100%	0%
1	1%	30	17%	63	36%	1	1%	22	27%	21	26%	2	3%	7	10%	37	51%
100%	100%	27%	43%	25%	44%	100%	100%	36%	50%	33%	52%	0%	50%	71%	71%	16%	46%

Reception	Σ	Σ %	=	= %	+	+ %	#	# %	+ # %	Eff
NETHERLANDS 2015	221	100%	13	6%	48	22%	50	23%	44%	38%
10 RAUWERDINK	62	28%	0	0%	15	24%	12	19%	44%	44%
11 KOOY	59	27%	8	14%	13	22%	9	15%	37%	24%
7 JORNA	38	17%	2	5%	8	21%	9	24%	45%	39%
13 GARDEREN van	14	6%	0	0%	5	36%	6	43%	79%	79%
6 DIEFENBACH	13	6%	1	8%	1	8%	5	38%	46%	38%
4 HORST ter	10	5%	0	0%	3	30%	4	40%	70%	70%

K1-Attacks after R#+	Σ	Σ %	=	= %	#	# %	Eff
NETHERLANDS 2015	82	100%	8	10%	45	55%	37%
12 DIJK van	17	21%	1	6%	11	65%	59%
6 DIEFENBACH	14	17%	0	0%	8	57%	43%
10 RAUWERDINK	14	17%	2	14%	8	57%	36%
11 KOOY	12	15%	2	17%	8	67%	42%
8 BEMMELEN van	7	9%	1	14%	2	29%	14%
4 HORST ter	5	6%	2	40%	1	20%	-40%
13 GARDEREN van	5	6%	0	0%	2	40%	20%

K2-Attacks - Transitor	Σ	Σ %	=	= %	#	# %	Eff
NETHERLANDS 2015	73	100%	9	12%	38	52%	29%
10 RAUWERDINK	30	41%	4	13%	15	50%	23%
12 DIJK van	15	21%	1	7%	8	53%	40%
14 KLAPWIJK	7	10%	0	0%	5	71%	57%
6 DIEFENBACH	4	5%	0	0%	3	75%	75%
11 KOOY	4	5%	2	50%	1	25%	-25%
4 HORST ter	2	3%	0	0%	1	50%	50%
8 BEMMELEN van	2	3%	0	0%	1	50%	50%

Attackdistribution depending on Settercalls - NETHERLANDS 2015

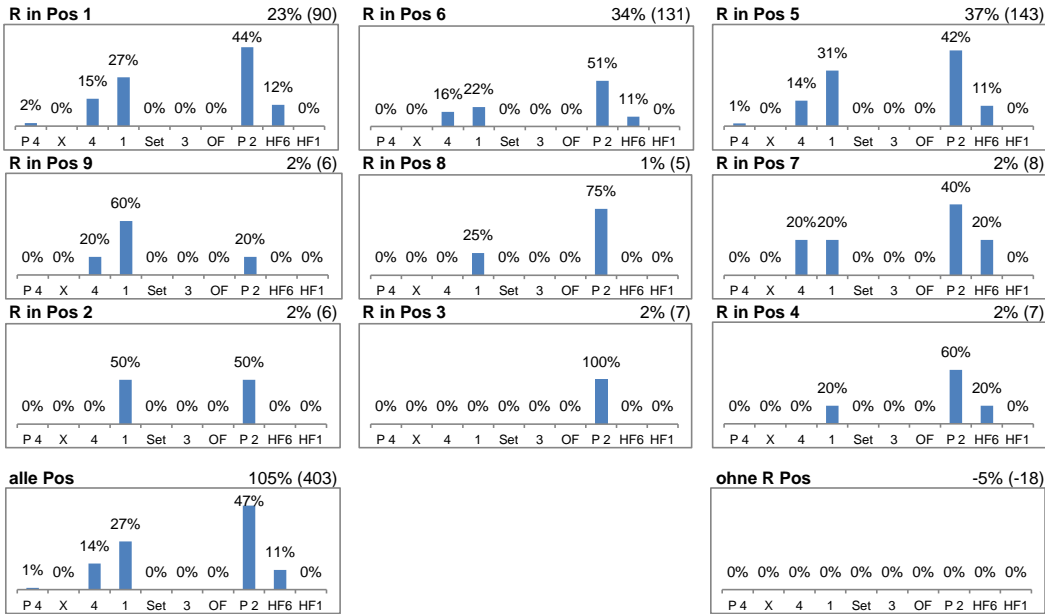


2: Attack of Opposite 3: Attack of Middleblocker 4: Attack of Outside B: Attack of Backrow

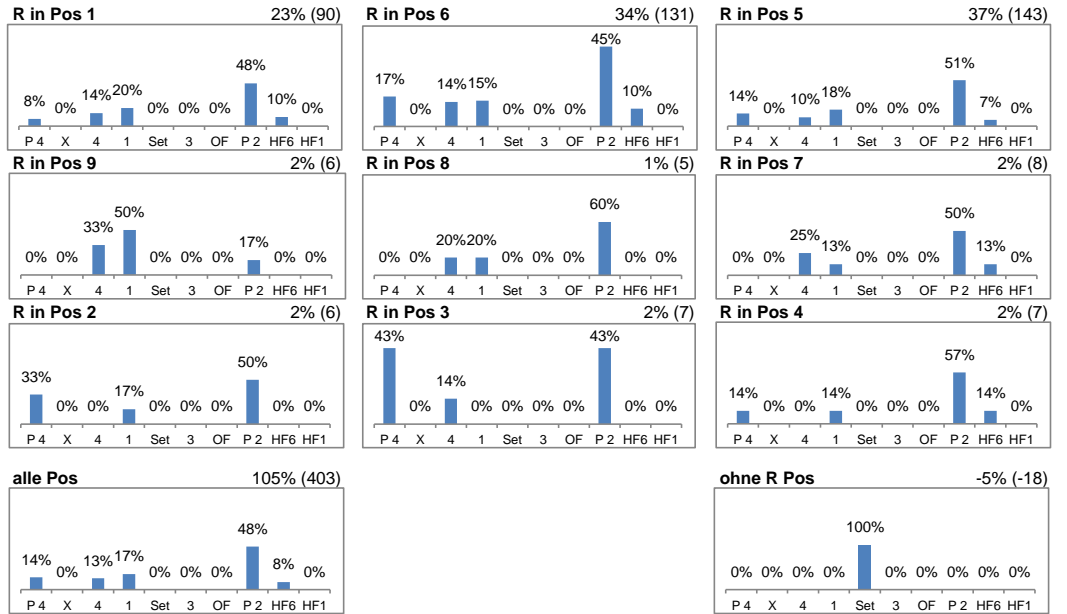
S: Attack of Setter xx%: Efficiency of Attacks (-100% to +100%)

Attacks depending on Reception Position - NETHERLANDS 2015

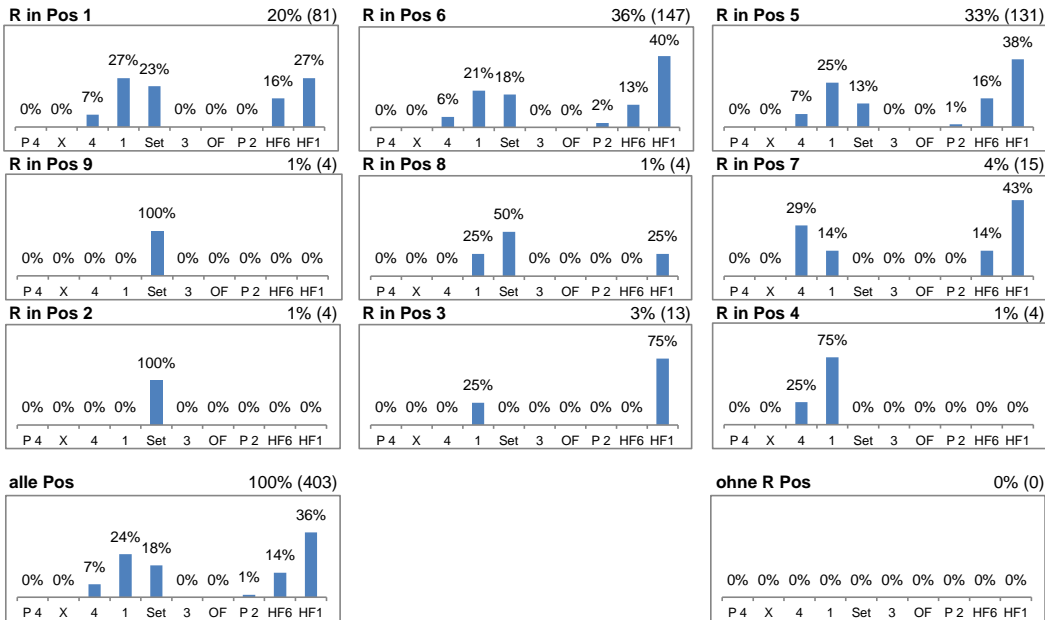
Setter back (S1, S6, S5) - R#+



Setter back (S1, S6, S5) - all Receptions



Setter front (S4, S3, S2) - R#+



Setter front (S4, S3, S2) - all Receptions

