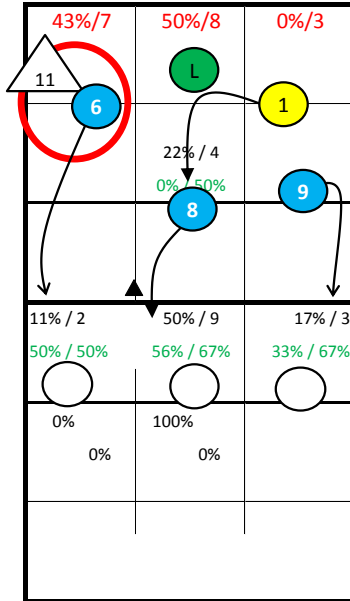


Roster

1 FROMM	Out
2 STEUERWALD	Lib
3 SCHWARZ	Out
6 KALIBERDA	Out
7 WESTPHAL	Out
8 BÖHME	MB
9 GROZER	Opp
10 SCHOPS	Opp
11 KAMPA	Set
12 TILLE	Lib
14 STROHBACH	Out
15 BROSHOG	MB
17 ZIMMERMANN	Set
18 ANDREI	MB

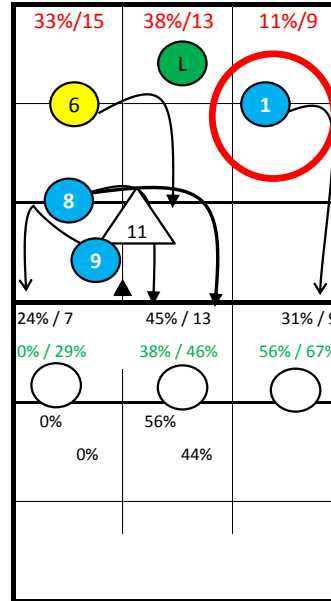
Germany

17: Jumpfloat at Position 5
11: Jumpserve at Position 1



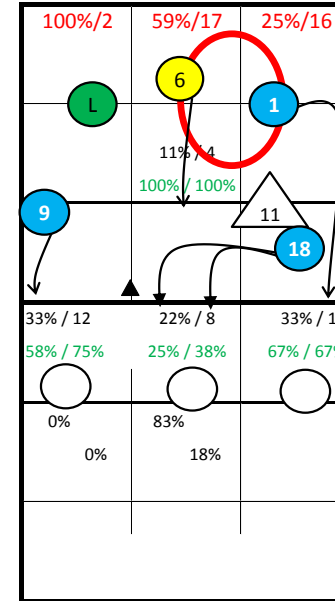
S1

14: Jumpfloat at Position 1
6: Jumpfloat at Position 5



S6

8: Jumpfloat at Position 5



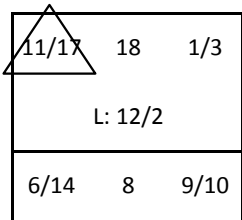
S5

S1

S6

S5

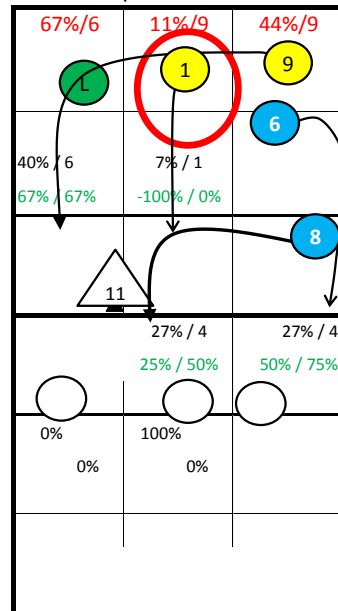
Starting Lineup:



Rotation:

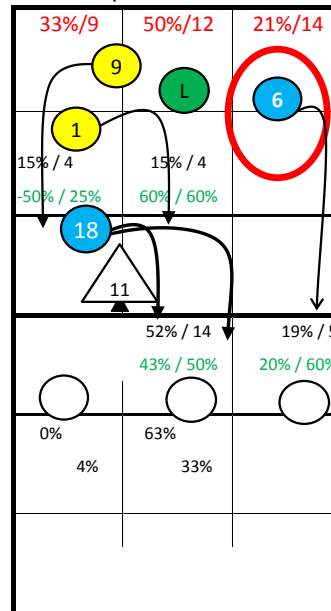
Ser: S6
Rec: S6

18: Jumpfloat at Position 5



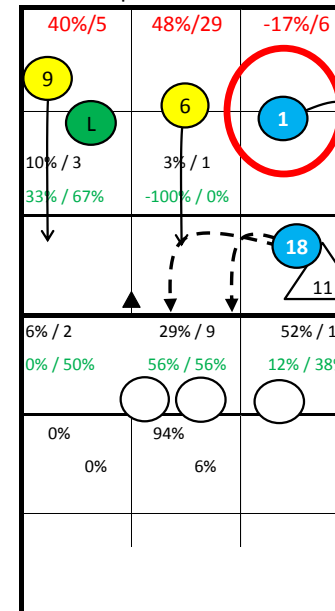
S2

3: Jumpfloat at Position 5
1: Jumpserve at Position 1



S3

10: Jumpserve at Position 1
9: Jumpserve at Position 6



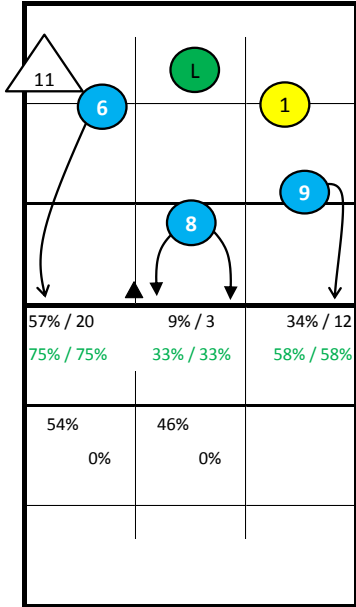
S4

S4

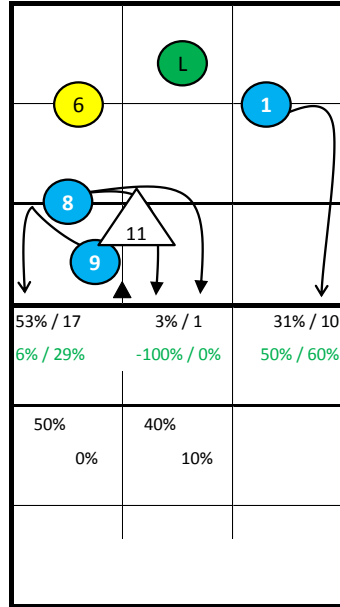
S3

S2

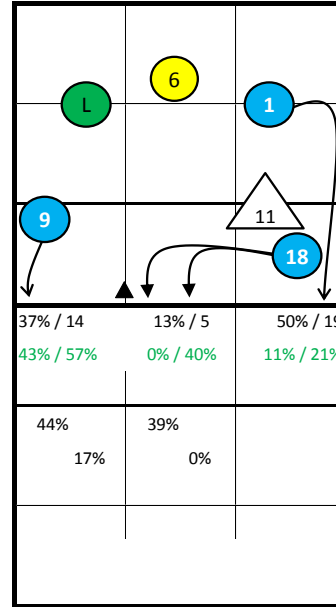
Germany -



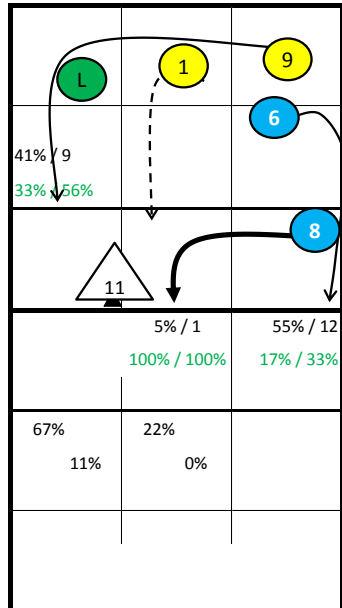
S1



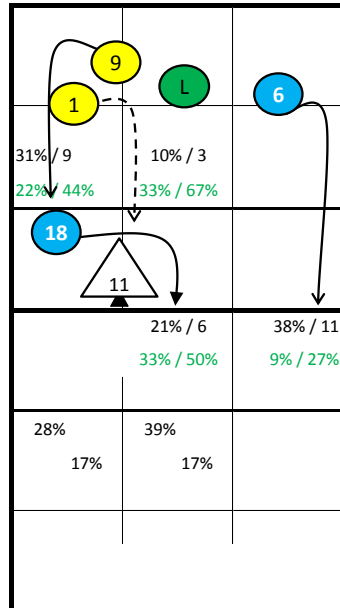
S6



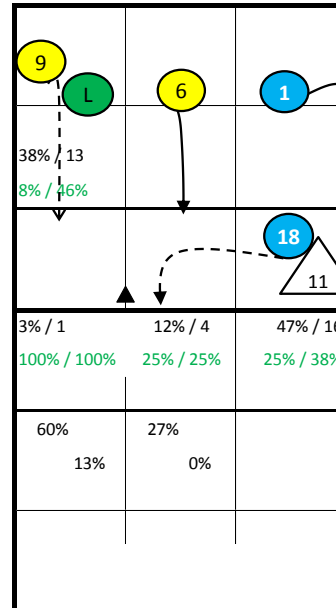
S5



S2



S3



S4

Germany - all Statistics

pId	Points					Serve								Reception										Attack											
	Set	pts	P/s	easy=	all=	W-L	Σ	=	-	+	#	=%	#%	eff%	Σ	in %	=	/	-	+	#	=/%	+#%	#%	eff%	Σ	in %	=	/	!	+	#	=/%	#%	eff%
Germany	22	364	16,5	132	386	-22	457	82	212	139	24	18%	5%	18%	419		24	8	199	115	73	8%	44%	17%	37%	569		39	53	34	65	286	16%	50%	34%
1 FROMM	21	68	3,2	16	51	17	56	10	20	20	6	18%	11%	29%	52	12%	7	0	30	9	6	13%	29%	12%	15%	118	21%	4	14	7	16	54	15%	46%	31%
2 STEUERWALD	17	0			15	-15	0							68	16%	3	3	20	24	18	9%	61%	26%	53%	0										
3 SCHWARZ	9	20	2,2	7	23	-3	23	6	10	6	1	26%	4%	4%	66	16%	2	2	34	20	8	6%	42%	12%	36%	33	6%	1	5	5	4	17	18%	52%	33%
6 KALIBERDA	14	30	2,1	9	30	0	32	2	25	4	1	6%	3%	9%	91	22%	4	0	44	26	17	4%	48%	19%	43%	59	10%	7	5	5	6	26	20%	44%	24%
7 WESTPHAL	6	8	1,3	4	12	-4	14	1	7	6	0	7%	0%	36%	18	4%	2	1	12	3	0	17%	17%	0%	0%	19	3%	2	3	3	2	8	26%	42%	16%
8 BÖHME	20	34	1,7	6	31	3	35	4	24	6	1	11%	3%	9%	0										45	8%	2	2	5	4	23	9%	51%	42%	
9 GROZER	18	88	4,9	37	70	18	69	23	17	23	6	33%	9%	9%	0										148	26%	14	16	3	16	74	20%	50%	30%	
10 SCHOPS	11	33	3,0	9	22	11	30	6	17	7	0	20%	0%	3%	3	1%	0	0	2	1	0	0%	33%	0%	33%	53	9%	3	5	2	7	33	15%	62%	47%
11 KAMPA	21	17	0,8	21	62	-45	80	15	41	18	6	19%	8%	11%	2	0%	1	0	1	0	0	50%	0%	0%	-50%	3	1%	0	0	0	0	3	0%	100%	100%
12 TILLE	13	0			10	-10	0							46	11%	2	0	19	17	8	4%	54%	17%	50%	0										
14 STROHBACH	12	33	2,8	8	21	12	30	6	10	13	1	20%	3%	27%	72	17%	3	2	36	15	16	7%	43%	22%	36%	47	8%	2	2	3	3	29	9%	62%	53%
15 BROSHOG	3	0			1	-1	0							0											0										
17 ZIMMERMANN	21	2	0,1	7	7	-5	28	5	11	11	1	18%	4%	25%	0										0										
18 ANDREI	18	31	1,7	8	31	0	60	4	30	25	1	7%	2%	37%	1	0%	0	0	1	0	0	0%	0%	0%	0%	44	8%	4	1	1	7	19	11%	43%	32%

	Block						Defense						Freeball					Set		
	Σ	=	+	#	#%	eff%	Σ	=	/-!	+#	+#%	eff%	Σ	err	bad	god	eff%	Σ	=	eff%
Germany	274	104	55	54	20%	4%	335	73	97	165	49%	27%	4	0	3	1	25%	581	11	77%
1 FROMM	29	8	8	8	28%	28%	28	6	10	12	43%	21%	1	0	1	0	0%	11	2	18%
2 STEUERWALD	0						50	12	10	28	56%	32%	0					22	0	73%
3 SCHWARZ	12	5	3	2	17%	8%	11	4	0	7	64%	27%	1	0	1	0	0%	4	0	75%
6 KALIBERDA	11	6	1	3	27%	-9%	32	6	9	17	53%	34%	0					10	0	70%
7 WESTPHAL	3	0	2	0	0%	67%	9	3	3	3	33%	0%	0					5	1	20%
8 BÖHME	69	21	13	10	14%	4%	10	2	5	3	30%	10%	1	0	1	0	0%	2	0	0%
9 GROZER	31	11	4	8	26%	6%	33	6	14	13	39%	21%	1	0	0	1	100%	9	0	44%
10 SCHOPS	13	7	5	0	0%	-15%	13	1	4	8	62%	54%	0					3	0	100%
11 KAMPA	37	20	5	8	22%	-19%	66	20	22	24	36%	6%	0					430	6	84%
12 TILLE	0						38	8	6	24	63%	42%	0					18	0	78%
14 STROHBACH	12	4	2	3	25%	8%	26	4	7	15	58%	42%	0					8	0	75%
15 BROSHOG	1	1	0	0	0%	-100%	2	0	0	2	100%	100%	0					0		
17 ZIMMERMANN	4	0	1	1	25%	50%	7	0	3	4	57%	57%	0					57	2	51%
18 ANDREI	52	21	11	11	21%	8%	10	1	4	5	50%	40%	0					2	0	100%

pId Set played Sets
 P/s Points per Set
 pts Points
 easy= easy errors (serve, net contact, ...)
 all= all errors
 W-L points - errors
 Σ sum of all events
 in % in percent of all team events

Germany - Attack-Statistic

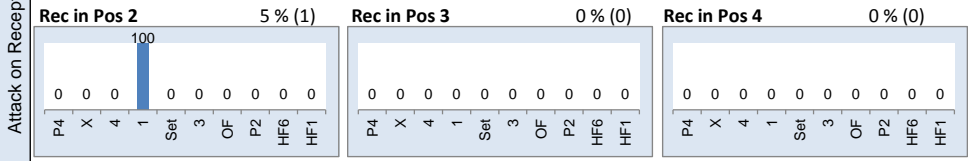
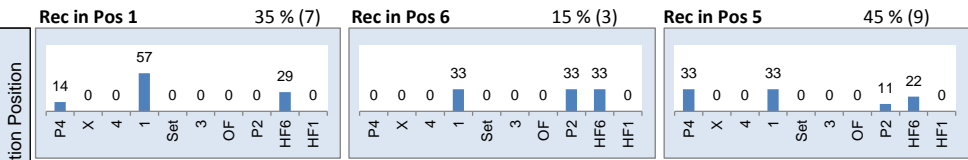
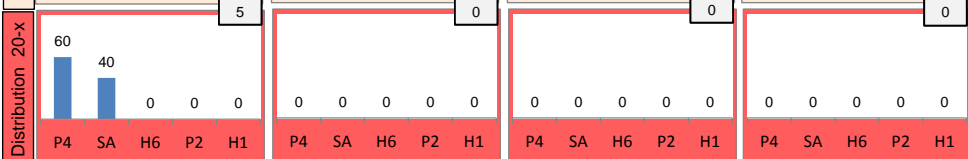
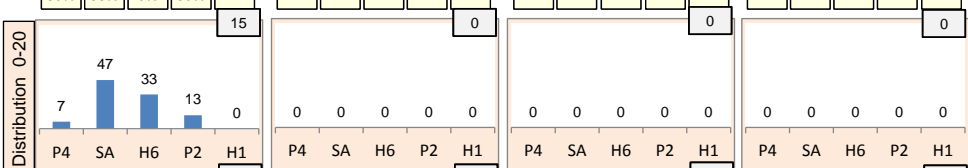
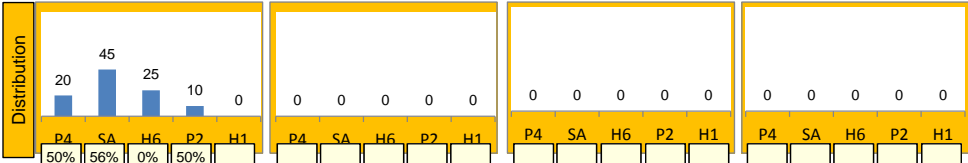
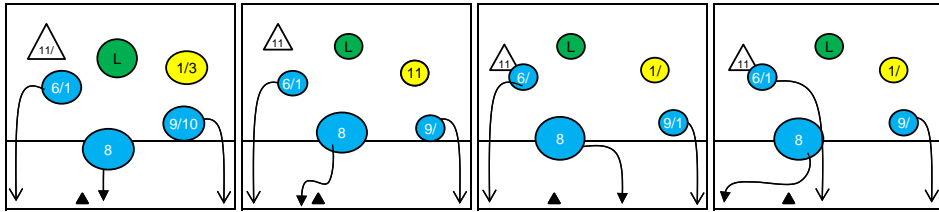
	K1 & K2 Attacks								K1 All Attacks								K2 Attacks								K1 aft R other Ply				K1 after own Rec			
	Σ	in %	=	/	#	=/%	#%	eff	Σ	in %	=	/	#	=/%	#%	eff	Σ	in %	=	/	#	=/%	#%	eff	sum	#	#%	eff	sum	#	#%	eff
Germany	554		36	53	282	16%	51%	35%	349		25	33	189	17%	54%	38%	205		11	20	93	15%	45%	30%	287	151	53%		62	38	61%	
9 GROZER	146	26%	13	16	74	20%	51%	31%	75	21%	9	8	38	23%	51%	28%	71	35%	4	8	36	17%	51%	34%	75	38	51%	28%	0			
1 FROMM	117	21%	4	14	53	15%	45%	30%	81	23%	3	11	40	17%	49%	32%	36	18%	1	3	13	11%	36%	25%	66	30	45%	27%	15	10	67%	53%
6 KALIBERDA	58	10%	6	5	26	19%	45%	26%	35	10%	5	3	18	23%	51%	29%	23	11%	1	2	8	13%	35%	22%	19	12	63%	47%	16	6	38%	6%
10 SCHOPS	53	10%	3	5	33	15%	62%	47%	27	8%	1	4	18	19%	67%	48%	26	13%	2	1	15	12%	58%	46%	25	18	72%	56%	2	0	0%	-50%
14 STROHBACH	44	8%	2	2	29	9%	66%	57%	28	8%	2	1	21	11%	75%	64%	16	8%	0	1	8	6%	50%	44%	14	11	79%	64%	14	10	71%	64%
8 BÖHME	43	8%	2	2	22	9%	51%	42%	36	10%	2	2	18	11%	50%	39%	7	3%	0	0	4	0%	57%	57%	36	18	50%	39%	0			
18 ANDREI	41	7%	3	1	19	10%	46%	37%	35	10%	2	1	16	9%	46%	37%	6	3%	1	0	3	17%	50%	33%	35	16	46%	37%	0			
3 SCHWARZ	33	6%	1	5	17	18%	52%	33%	23	7%	0	2	15	9%	65%	57%	10	5%	1	3	2	40%	20%	-20%	10	5	50%	40%	13	10	77%	69%
7 WESTPHAL	18	3%	2	3	8	28%	44%	17%	9	3%	1	1	5	22%	56%	33%	9	4%	1	2	3	33%	33%	0%	7	3	43%	14%	2	2	100%	100%
11 KAMPA	1	0%	0	0	1	0%	100%	100%	0								1	0%	0	0	1	0%	100%	100%	0				0			
2 STEUERWALD	0								0								0								0				0			
12 TILLE	0								0								0								0				0			
15 BROSHOG	0								0								0								0				0			
17 ZIMMERMANN	0								0								0								0				0			

	K1 after R#+								K1 after R-!								Freeball-Attacks							
	Σ	in %	=	/	#	=/%	#%	eff	Σ	in %	=	/	#	=/%	#%	eff	Σ	in %	=	/	#	=/%	#%	eff
Germany	175		10	19	98	17%	56%	39%	175		15	14	92	17%	53%	36%	65		4	5	30	14%	46%	32%
9 GROZER	35	20%	3	4	21	20%	60%	40%	40	23%	6	4	17	25%	42%	17%	21	300%	2	3	7	24%	33%	10%
1 FROMM	39	22%	0	7	20	18%	51%	33%	43	25%	3	4	21	16%	49%	33%	7	350%	0	0	2	0%	29%	29%
6 KALIBERDA	12	7%	3	1	6	33%	50%	17%	23	13%	2	2	12	17%	52%	35%	6	300%	0	1	2	17%	33%	17%
10 SCHOPS	12	7%	0	3	8	25%	67%	42%	15	9%	1	1	10	13%	67%	53%	10	167%	0	1	6	10%	60%	50%
14 STROHBACH	8	5%	2	0	5	25%	62%	38%	20	11%	0	1	16	5%	80%	75%	7	117%	0	0	6	0%	86%	86%
8 BÖHME	33	19%	1	2	16	9%	48%	39%	3	2%	1	0	2	33%	67%	33%	6	150%	0	0	4	0%	67%	67%
18 ANDREI	28	16%	1	1	16	7%	57%	50%	7	4%	1	0	0	14%	0%	-14%	2	200%	1	0	1	50%	50%	0%
3 SCHWARZ	6	3%	0	1	5	17%	83%	67%	17	10%	0	1	10	6%	59%	53%	4	400%	1	0	1	25%	25%	0%
7 WESTPHAL	2	1%	0	0	1	0%	50%	50%	7	4%	1	1	4	29%	57%	29%	2	200%	0	0	1	0%	50%	50%
11 KAMPA	0								0								0							
2 STEUERWALD	0								0								0							
12 TILLE	0								0								0							
15 BROSHOG	0								0								0							
17 ZIMMERMANN	0								0								0							

Rotation 1

Germany

Base K1 100% (20) Base K2 0% (0) Base K7 0% (0) Base KD 0% (0)



Distribution

K1 after all R 46 37% 57% K1 after R#+ 20 40% 60% K2 Transition 32 69% 69%

Category	P4	SA	H6	P2	H1
K1 after all R	0	6	13%	0	-
K1 after R#+	0	5	25%	0	-
K2 Transition	0	0	-	0	-

Reception	Σ	Σ %	=/	=/ %	+	+ %	#	# %	+ # %	Eff
Germany	55	100%	3	5%	12	22%	11	20%	42%	36%
2 STEUERWALD	14	25%	1	7%	2	14%	4	29%	43%	36%
3 SCHWARZ	11	20%	0	0%	4	36%	1	9%	45%	45%
12 TILLE	8	15%	0	0%	2	25%	2	25%	50%	50%
14 STROHBACH	8	15%	0	0%	2	25%	2	25%	50%	50%
6 KALIBERDA	7	13%	0	0%	2	29%	1	14%	43%	43%
1 FROMM	3	5%	1	33%	0	0%	1	33%	33%	0%

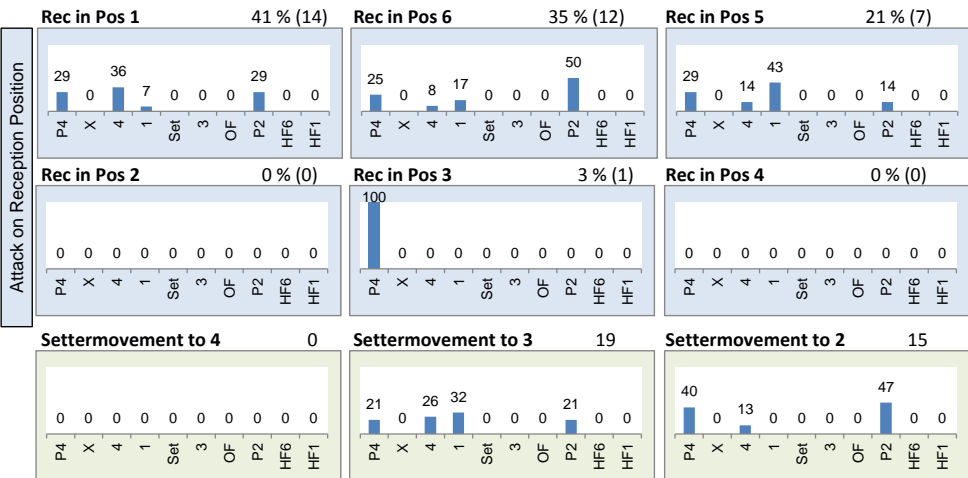
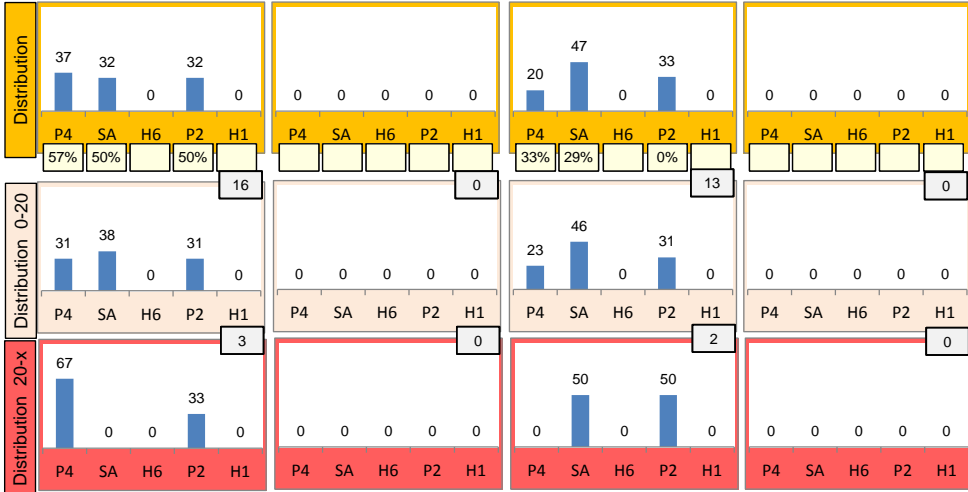
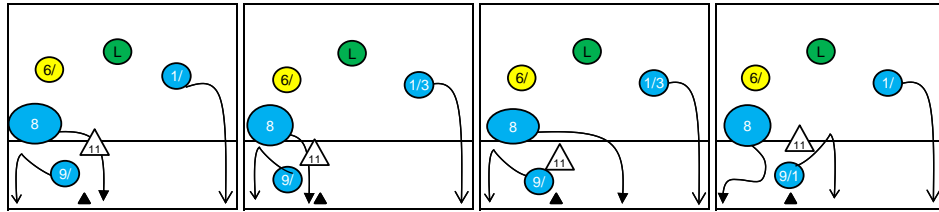
K1-Attacks after R#+	Σ	Σ %	=	= %	#	# %	Eff
Germany	20	100%	1	5%	12	60%	40%
8 BÖHME	5	25%	1	20%	3	60%	40%
1 FROMM	4	20%	0	0%	2	50%	0%
9 GROZER	4	20%	0	0%	3	75%	50%
18 ANDREI	4	20%	0	0%	3	75%	75%
3 SCHWARZ	1	5%	0	0%	1	100%	100%
7 WESTPHAL	1	5%	0	0%	0	0%	0%
14 STROHBACH	1	5%	0	0%	0	0%	0%

K2-Attacks - Transition	Σ	Σ %	=	= %	#	# %	Eff
Germany	32	100%	0	0%	22	69%	69%
9 GROZER	19	59%	0	0%	12	63%	63%
10 SCHOPS	6	19%	0	0%	6	100%	100%
6 KALIBERDA	3	9%	0	0%	1	33%	33%
14 STROHBACH	3	9%	0	0%	2	67%	67%
7 WESTPHAL	1	3%	0	0%	1	100%	100%
1 FROMM	0	0%	0	-	0	-	-
2 STEUERWALD	0	0%	0	-	0	-	-

Rotation 6

Germany

Base K1 56 % (19) Base K2 0 % (0) Base K7 44 % (15) Base KD 0 % (0)



Distribution

K1 after all R 62 39% 50% K1 after R#+ 34 38% 50% K2 Transition 36 22% 42%

Category	Count	Percentage
0	-	0%
-	-	0%
21	34%	15 24%
38%	52%	33% 40%
0	-	0%
-	-	0%
11	32%	13 38%
27%	45%	38% 46%
0	-	0%
-	-	0%
20	56%	0 -
10%	30%	- -
5	14%	0 -
0%	40%	- -
11	31%	55% 64%

Reception	Σ	Σ %	=	= %	+	+ %	#	# %	+ # %	Eff
Germany	77	100%	6	8%	29	38%	10	13%	51%	43%
14 STROHBACH	17	22%	3	18%	5	29%	4	24%	53%	35%
6 KALIBERDA	15	19%	0	0%	4	27%	1	7%	33%	33%
2 STEUERWALD	13	17%	0	0%	10	77%	2	15%	92%	92%
12 TILLE	13	17%	1	8%	4	31%	2	15%	46%	38%
1 FROMM	9	12%	2	22%	3	33%	0	0%	33%	11%
3 SCHWARZ	7	9%	0	0%	3	43%	1	14%	57%	57%

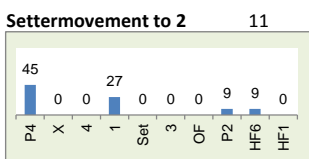
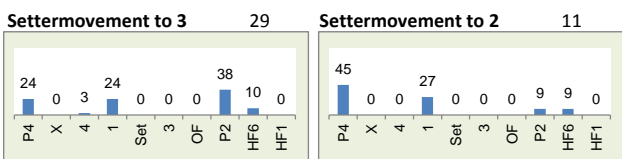
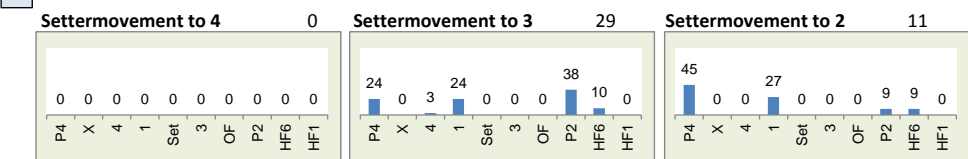
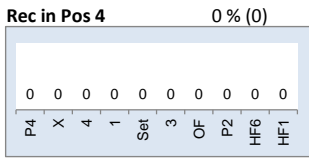
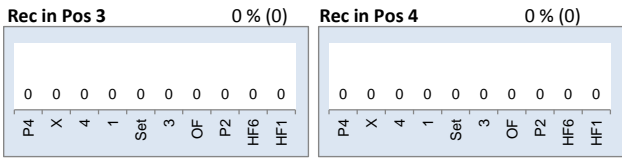
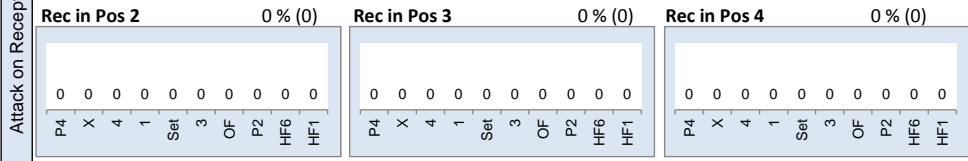
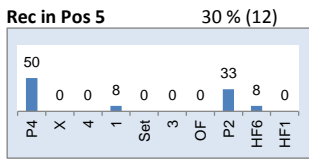
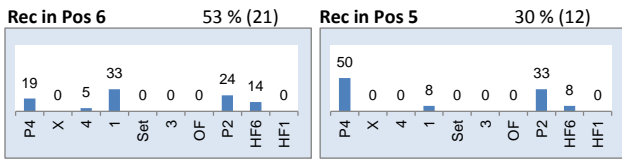
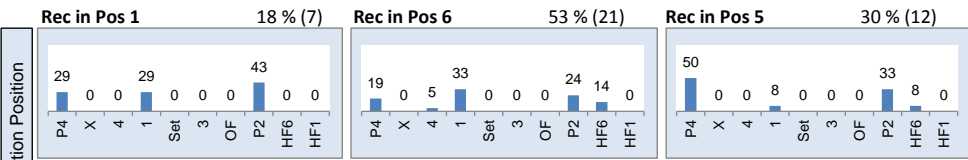
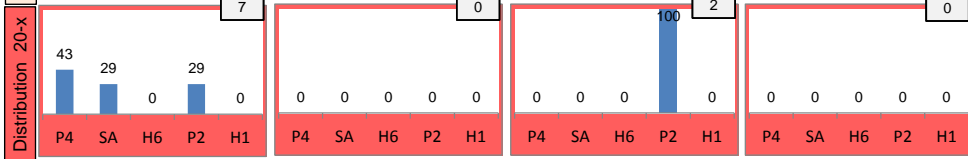
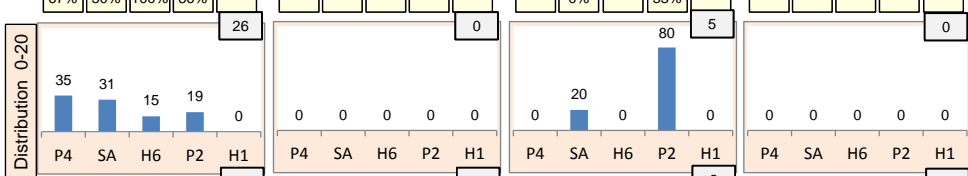
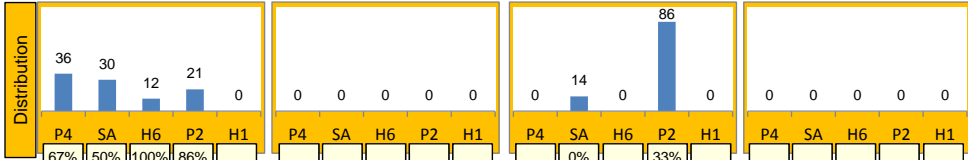
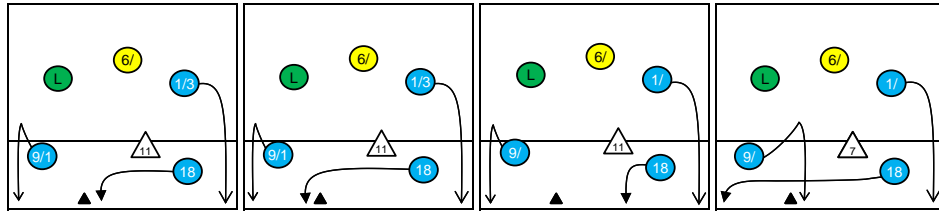
K1-Attacks after R#+	Σ	Σ %	=	= %	#	# %	Eff
Germany	34	100%	2	6%	17	50%	38%
18 ANDREI	12	35%	0	0%	5	42%	33%
9 GROZER	9	26%	1	11%	4	44%	22%
1 FROMM	6	18%	0	0%	4	67%	67%
6 KALIBERDA	4	12%	1	25%	2	50%	25%
10 SCHOPS	2	6%	0	0%	1	50%	50%
8 BÖHME	1	3%	0	0%	1	100%	100%
2 STEUERWALD	0	0%	0	-	0	-	-

K2-Attacks - Transitor	Σ	Σ %	=	= %	#	# %	Eff
Germany	36	100%	2	6%	15	42%	22%
9 GROZER	17	47%	0	0%	5	29%	6%
1 FROMM	7	19%	1	14%	4	57%	43%
3 SCHWARZ	4	11%	1	25%	2	50%	0%
6 KALIBERDA	3	8%	0	0%	1	33%	33%
10 SCHOPS	3	8%	0	0%	1	33%	33%
7 WESTPHAL	1	3%	0	0%	1	100%	100%
14 STROHBACH	1	3%	0	0%	1	100%	100%

Rotation 5

Germany

Base K1 83% (33) Base K2 0% (0) Base K7 18% (7) Base KD 0% (0)



Distribution

K1 after all R 68 50% 60% K1 after R#+ 40 62% 70% K2 Transition 44 18% 32%

	0	-	5	7%	0	-	4	10%	0	-	0	-	0	-
Germany	22	32%	13	19%	28	41%	13	33%	11	28%	12	30%	16	36%
6 KALIBERDA	50%	64%	54%	62%	39%	50%	62%	77%	45%	55%	67%	67%	38%	50%
14 STROHBACH													5	11%
1 FROMM													23	52%
2 STEUERWALD													0	17%
3 SCHWARZ														
7 WESTPHAL														

Reception

	∑	∑ %	=/	=/ %	+	+ %	#	# %	+ # %	Eff
Germany	76	100%	2	3%	22	29%	19	25%	54%	51%
6 KALIBERDA	17	22%	0	0%	5	29%	5	29%	59%	59%
14 STROHBACH	17	22%	1	6%	4	24%	7	41%	65%	59%
1 FROMM	16	21%	1	6%	3	19%	2	13%	31%	25%
2 STEUERWALD	11	14%	0	0%	5	45%	2	18%	64%	64%
3 SCHWARZ	11	14%	0	0%	3	27%	2	18%	45%	45%
7 WESTPHAL	2	3%	0	0%	1	50%	0	0%	50%	50%

K1-Attacks after R#+

	∑	∑ %	=	= %	#	# %	Eff
Germany	40	100%	0	0%	28	70%	62%
1 FROMM	12	30%	0	0%	8	67%	67%
9 GROZER	10	25%	0	0%	8	80%	70%
8 BÖHME	6	15%	0	0%	2	33%	17%
10 SCHOPS	4	10%	0	0%	3	75%	50%
18 ANDREI	4	10%	0	0%	3	75%	75%
3 SCHWARZ	2	5%	0	0%	2	100%	100%
6 KALIBERDA	1	3%	0	0%	1	100%	100%

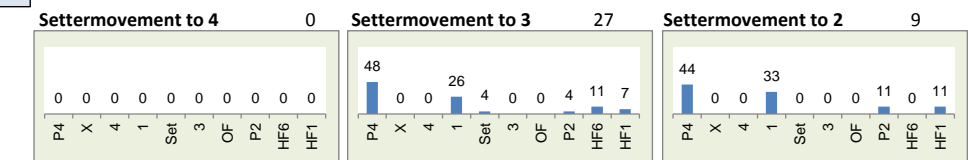
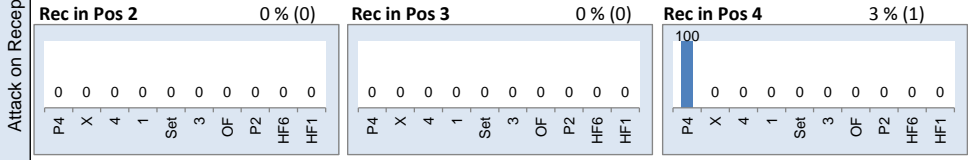
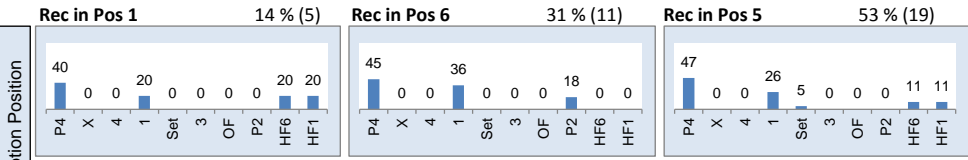
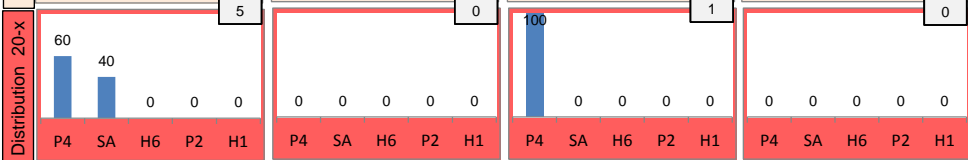
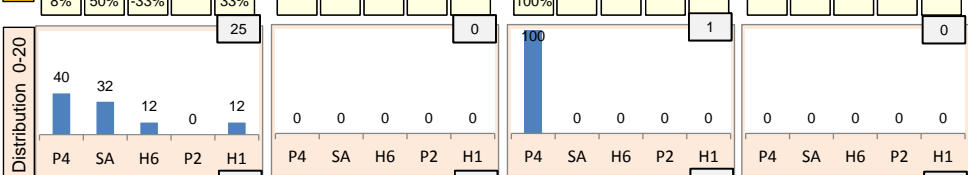
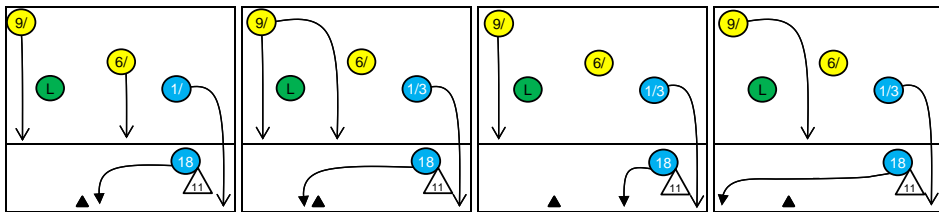
K2-Attacks - Transition

	∑	∑ %	=	= %	#	# %	Eff
Germany	44	100%	1	2%	14	32%	18%
1 FROMM	13	30%	0	0%	2	15%	8%
9 GROZER	8	18%	0	0%	3	38%	25%
10 SCHOPS	8	18%	0	0%	5	63%	50%
6 KALIBERDA	4	9%	0	0%	1	25%	25%
7 WESTPHAL	4	9%	1	25%	0	0%	-50%
8 BÖHME	3	7%	0	0%	2	67%	67%
18 ANDREI	2	5%	0	0%	0	0%	0%

Rotation 4

Germany

Base K1 94 % (30) Base K2 0 % (0) Base K7 6 % (2) Base KD 0 % (0)



Distribution

K1 after all R 68 28% 49% K1 after R#+ 35 23% 46% K2 Transition 36 28% 47%

7	10%	4	6%	0	-	3	9%	3	9%	0	-	16	44%	0	-	0	-
29%	57%	-50%	25%	-	-	33%	67%	-33%	33%	-	-	25%	56%	-	-	-	-
2	3%	11	16%	44	65%	2	6%	10	29%	17	49%	1	3%	2	6%	17	47%
0%	50%	36%	45%	34%	50%	0%	50%	50%	50%	18%	41%	100%	100%	0%	0%	29%	41%

Reception	Σ	Σ %	=	= %	+	+ %	#	# %	+ # %	Eff
Germany	85	100%	10	12%	21	25%	15	18%	42%	31%
6 KALIBERDA	29	34%	2	7%	8	28%	8	28%	55%	48%
3 SCHWARZ	18	21%	2	11%	6	33%	2	11%	44%	33%
2 STEUERWALD	9	11%	2	22%	2	22%	3	33%	56%	33%
14 STROHBACH	9	11%	0	0%	2	22%	1	11%	33%	33%
1 FROMM	6	7%	1	17%	0	0%	0	0%	0%	-17%
7 WESTPHAL	5	6%	2	40%	1	20%	0	0%	20%	-20%

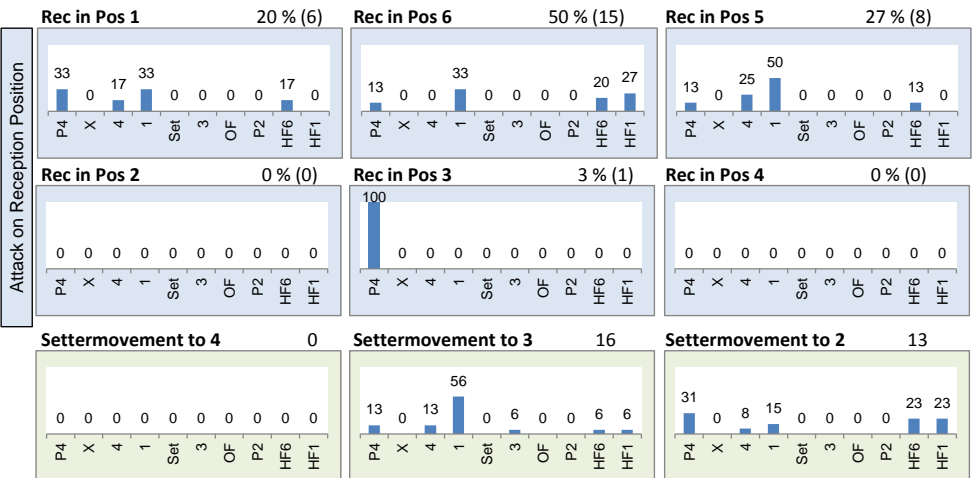
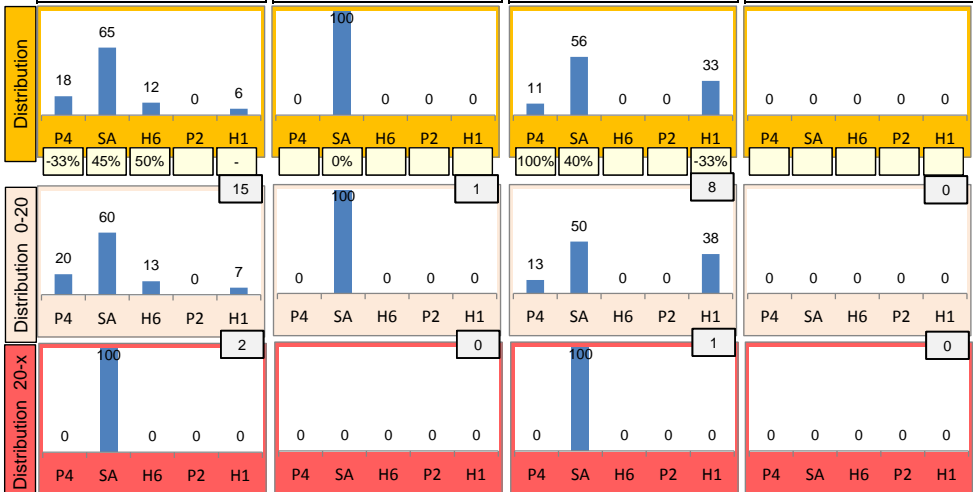
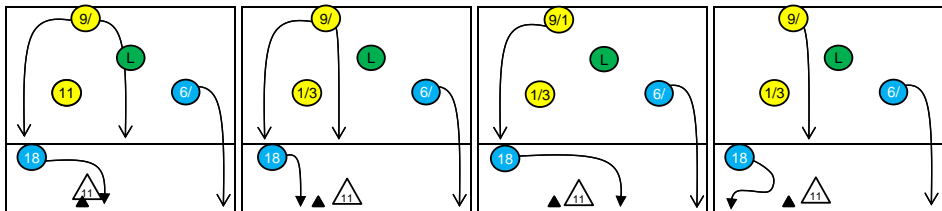
K1-Attacks after R#+	Σ	Σ %	=	= %	#	# %	Eff
Germany	35	100%	1	3%	16	46%	23%
1 FROMM	13	37%	0	0%	4	31%	0%
8 BÖHME	7	20%	0	0%	3	43%	43%
10 SCHOPS	3	9%	0	0%	2	67%	33%
18 ANDREI	3	9%	0	0%	2	67%	67%
3 SCHWARZ	2	6%	0	0%	1	50%	0%
6 KALIBERDA	2	6%	0	0%	1	50%	50%
9 GROZER	2	6%	0	0%	1	50%	0%

K2-Attacks - Transitor	Σ	Σ %	=	= %	#	# %	Eff
Germany	36	100%	4	11%	17	47%	28%
1 FROMM	13	36%	0	0%	5	38%	23%
9 GROZER	11	31%	2	18%	8	73%	45%
10 SCHOPS	5	14%	2	40%	1	20%	-20%
6 KALIBERDA	4	11%	0	0%	2	50%	50%
8 BÖHME	2	6%	0	0%	0	0%	0%
7 WESTPHAL	1	3%	0	0%	1	100%	100%
2 STEUERWALD	0	0%	0	-	0	-	-

Rotation 3

Germany

Base K1 63% (17) Base K2 4% (1) Base K7 33% (9) Base KD 0% (0)



Distribution

K1 after all R 61 39% 57% K1 after R# 30 27% 50% K2 Transition 32 22% 44%

Category	Count	%	Count	%	Count	%
10	16%	5	8%	0	-	
-10%	40%	60%	60%	-	-	
1	2%	15	25%	30	49%	
100%	100%	47%	53%	47%	63%	
4	13%	5	17%	0	-	
-50%	25%	60%	60%	-	-	
0	-	15	50%	6	20%	
-	-	47%	53%	0%	50%	
10	31%	4	13%	0	-	
30%	50%	25%	50%	-	-	
0	-	5	16%	13	41%	
-	-	60%	80%	0%	23%	

Reception	Σ	Σ %	=/	=/ %	+	+ %	#	# %	+ # %	Eff
Germany	72	100%	10	14%	17	24%	12	17%	40%	26%
2 STEUERWALD	14	19%	3	21%	3	21%	4	29%	50%	29%
6 KALIBERDA	14	19%	2	14%	5	36%	0	0%	36%	21%
12 TILLE	12	17%	1	8%	6	50%	1	8%	58%	50%
3 SCHWARZ	11	15%	2	18%	1	9%	2	18%	27%	9%
14 STROHBACH	11	15%	1	9%	1	9%	2	18%	27%	18%
1 FROMM	9	13%	1	11%	1	11%	3	33%	44%	33%

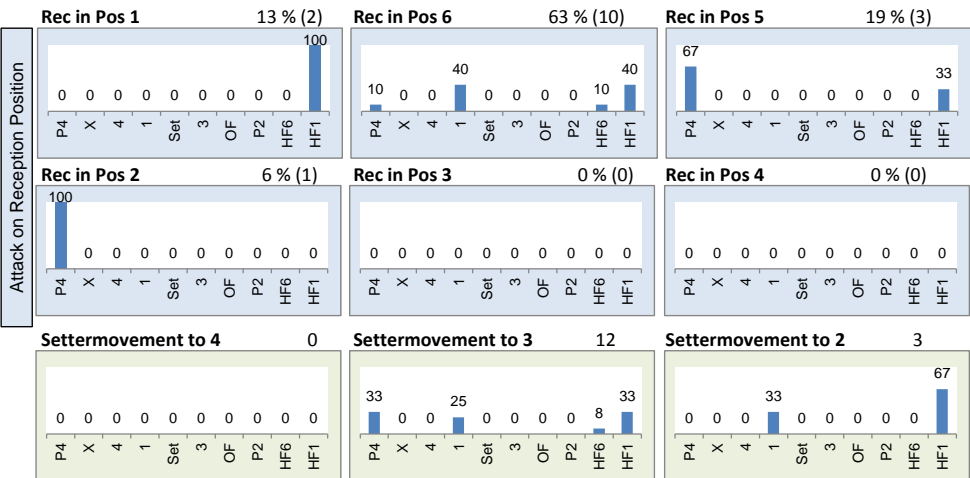
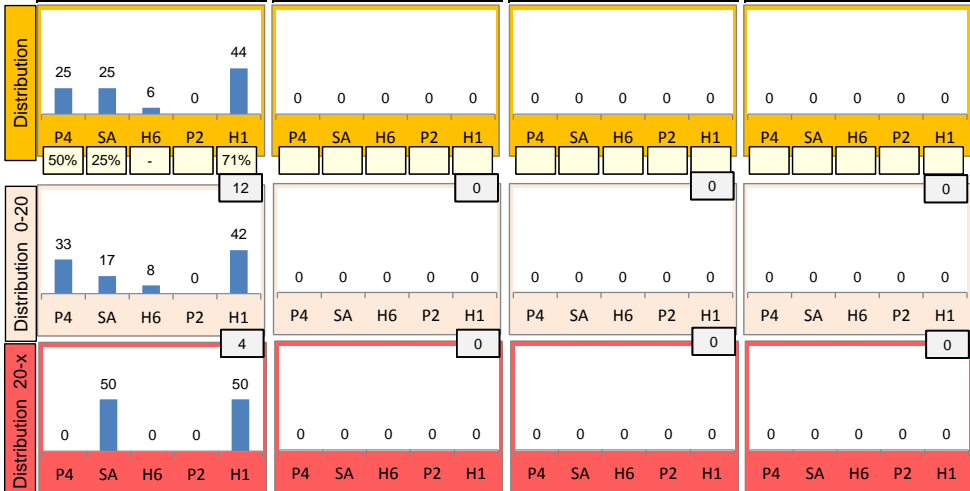
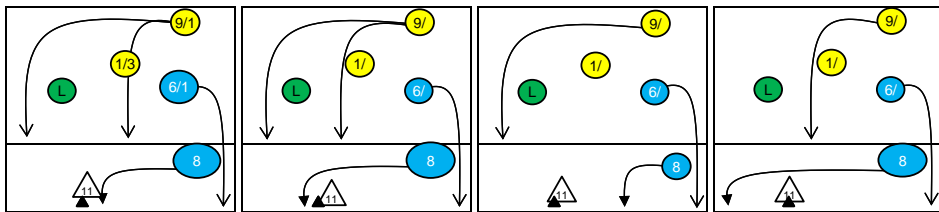
K1-Attacks after R#	Σ	Σ %	=	= %	#	# %	Eff
Germany	30	100%	4	13%	15	50%	27%
8 BÖHME	12	40%	0	0%	6	50%	42%
9 GROZER	5	17%	2	40%	2	40%	0%
1 FROMM	3	10%	0	0%	2	67%	67%
6 KALIBERDA	3	10%	1	33%	1	33%	-33%
14 STROHBACH	3	10%	1	33%	2	67%	33%
18 ANDREI	3	10%	0	0%	2	67%	67%
10 SCHOPS	1	3%	0	0%	0	0%	-100%

K2-Attacks - Transition	Σ	Σ %	=	= %	#	# %	Eff
Germany	32	100%	3	9%	14	44%	22%
9 GROZER	8	25%	1	13%	4	50%	25%
6 KALIBERDA	7	22%	1	14%	1	14%	-29%
14 STROHBACH	6	19%	0	0%	2	33%	33%
18 ANDREI	3	9%	1	33%	2	67%	33%
1 FROMM	2	6%	0	0%	2	100%	100%
8 BÖHME	2	6%	0	0%	2	100%	100%
10 SCHOPS	2	6%	0	0%	1	50%	50%

Rotation 2

Germany

Base K1 100% (16) Base K2 0% (0) Base K7 0% (0) Base KD 0% (0)



Distribution

K1 after all R 44 30% 52% K1 after R#+ 16 44% 63% K2 Transition 25 28% 44%

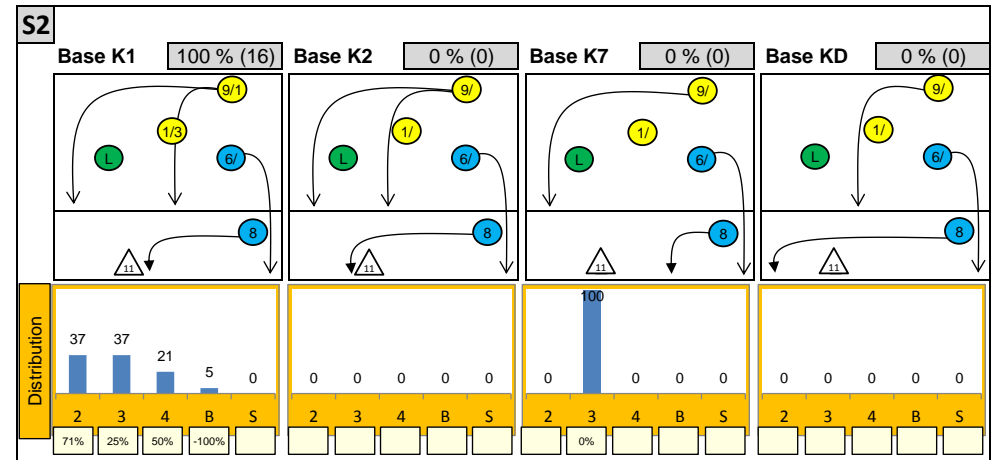
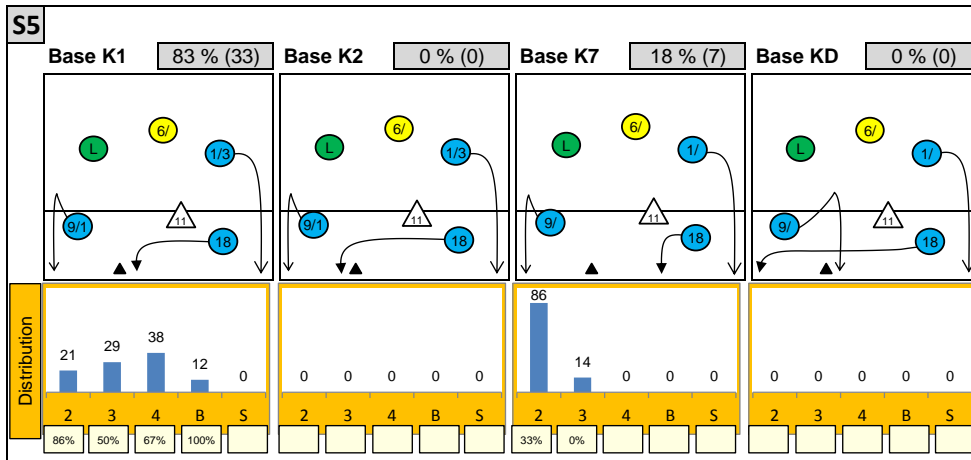
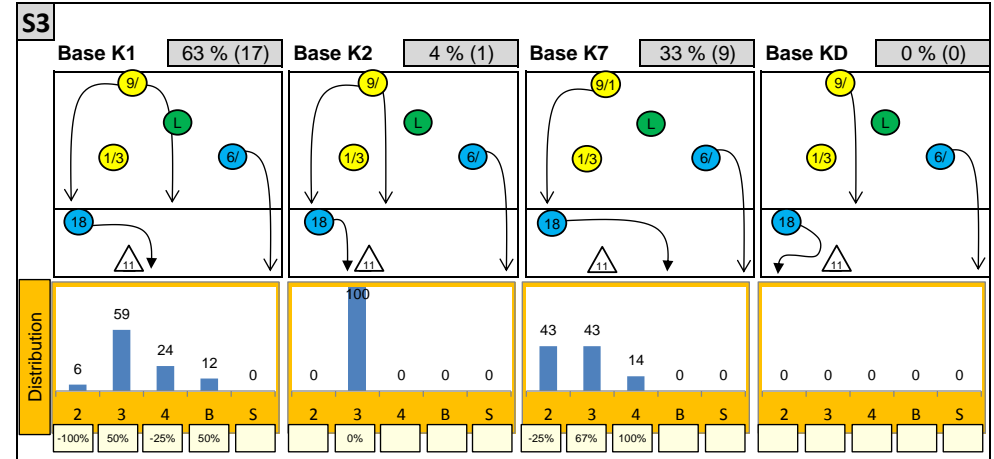
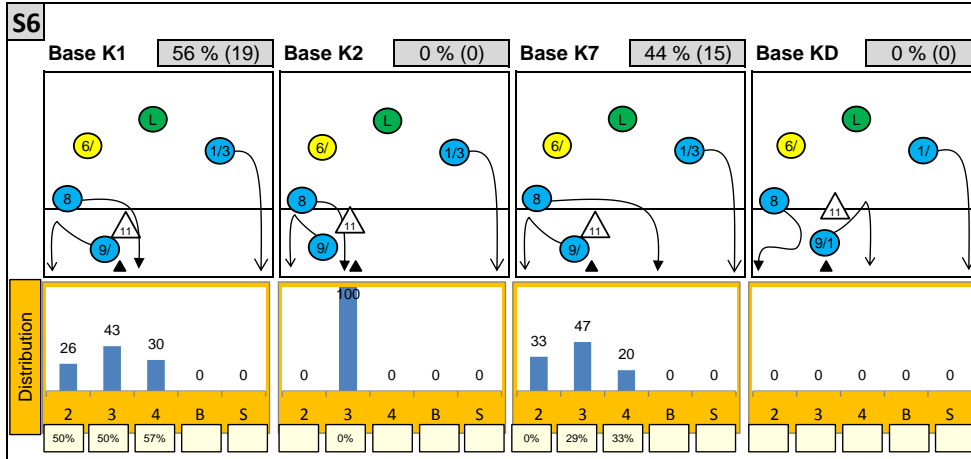
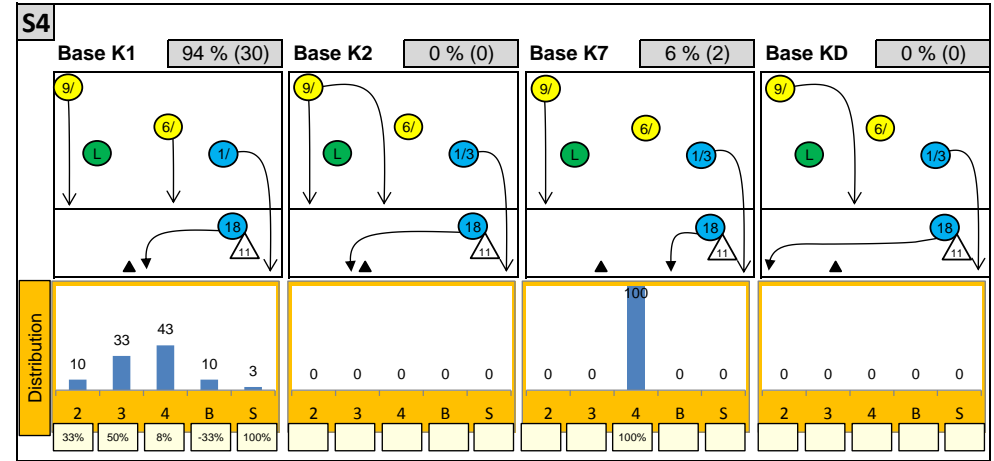
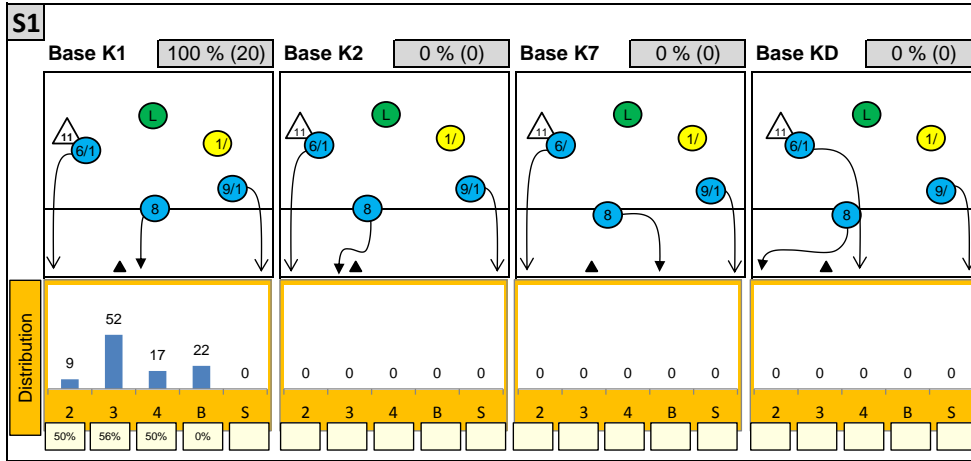
Category	Value	%	Value	%	Value	%
16	36%	2	5%	0	-	-
44%	63%	-100%	0%	-	-	-
0	-	6	14%	20	45%	-
-	-	17%	33%	35%	55%	-

Reception	Σ	Σ %	=	= %	+	+ %	#	# %	+ # %	Eff
Germany	54	100%	1	2%	14	26%	6	11%	37%	35%
14 STROHBACH	10	19%	0	0%	1	10%	0	0%	10%	10%
1 FROMM	9	17%	1	11%	2	22%	0	0%	22%	11%
6 KALIBERDA	9	17%	0	0%	2	22%	2	22%	44%	44%
3 SCHWARZ	8	15%	0	0%	3	38%	0	0%	38%	38%
2 STEUERWALD	7	13%	0	0%	2	29%	3	43%	71%	71%
12 TILLE	6	11%	0	0%	3	50%	1	17%	67%	67%

K1-Attacks after R#+	Σ	Σ %	=	= %	#	# %	Eff
Germany	16	100%	2	13%	10	63%	44%
9 GROZER	5	31%	0	0%	3	60%	60%
6 KALIBERDA	2	13%	1	50%	1	50%	0%
8 BÖHME	2	13%	0	0%	1	50%	50%
10 SCHOPS	2	13%	0	0%	2	100%	100%
18 ANDREI	2	13%	1	50%	1	50%	0%
1 FROMM	1	6%	0	0%	0	0%	-100%
3 SCHWARZ	1	6%	0	0%	1	100%	100%

K2-Attacks - Transitor	Σ	Σ %	=	= %	#	# %	Eff
Germany	25	100%	1	4%	11	44%	28%
9 GROZER	8	32%	1	13%	4	50%	25%
14 STROHBACH	6	24%	0	0%	3	50%	33%
3 SCHWARZ	4	16%	0	0%	0	0%	0%
6 KALIBERDA	2	8%	0	0%	2	100%	100%
10 SCHOPS	2	8%	0	0%	1	50%	50%
1 FROMM	1	4%	0	0%	0	0%	0%
7 WESTPHAL	1	4%	0	0%	0	0%	-100%

Attackdistribution depending on Settercalls - Germany

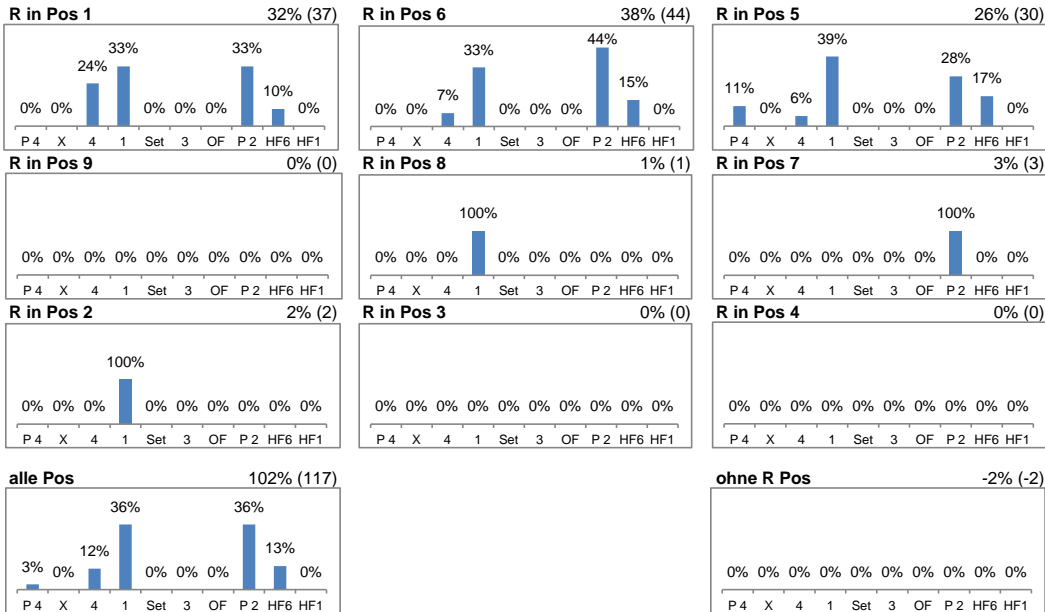


2: Attack of Opposite 3: Attack of Middleblocker 4: Attack of Outside B: Attack of Backrow

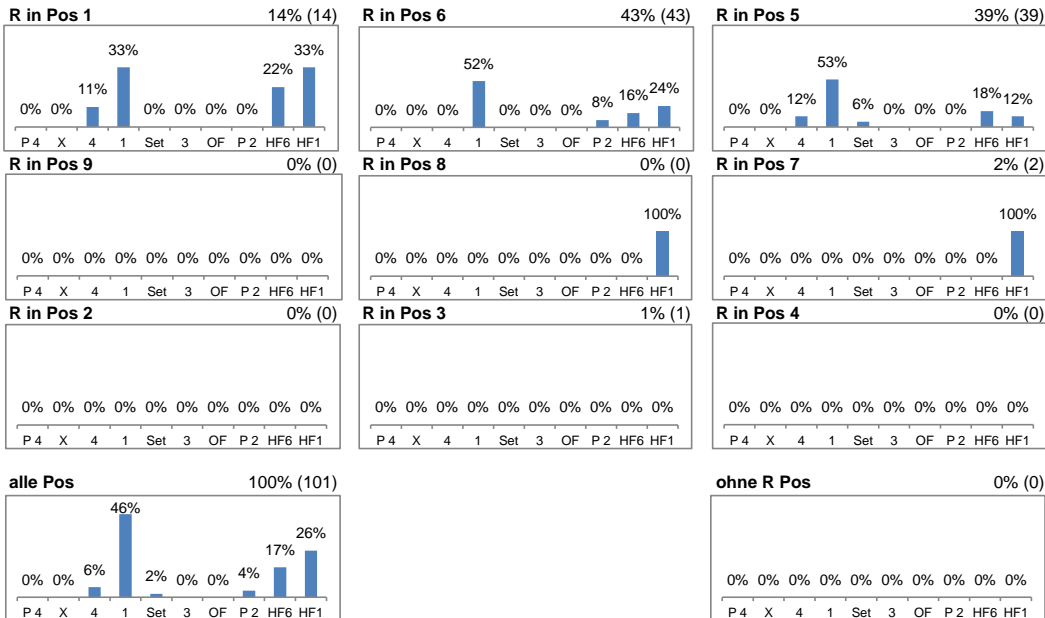
S: Attack of Setter xx%: Efficiency of Attacks (-100% to +100%)

Attacks depending on Reception Position - Germany

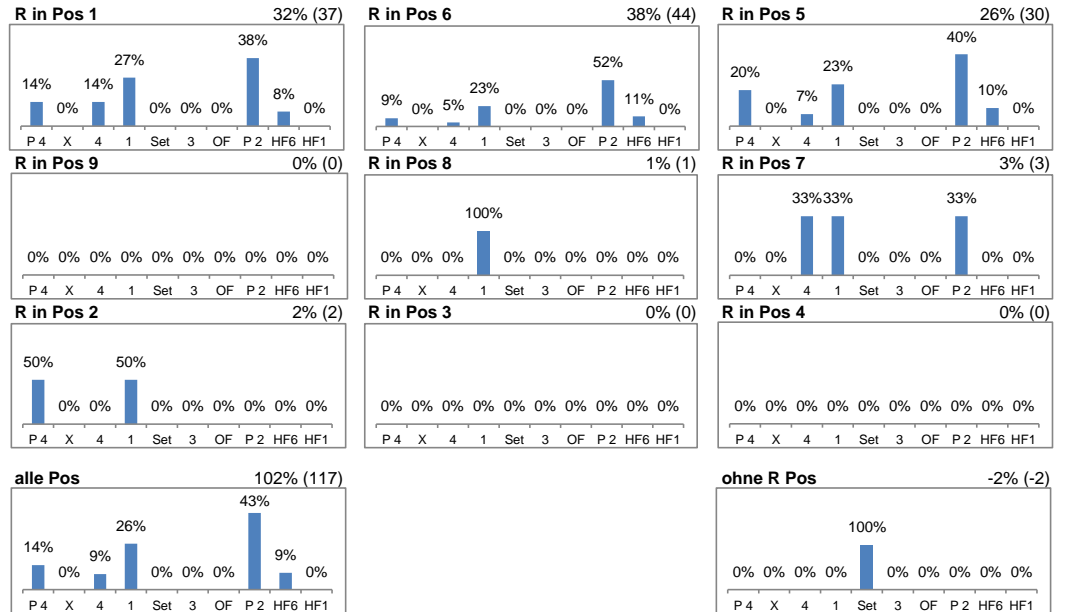
Setter back (S1, S6, S5) - R#+



Setter front (S4, S3, S2) - R#+



Setter back (S1, S6, S5) - all Receptions



Setter front (S4, S3, S2) - all Receptions

