

Total Zone Chart analysis

Germany | Atk after Rec | Setter in 2 | OR[*~R~#,1][*~R~#]

S2

4	27%	4	27%
3	75%	2	50%
Kaliberda: 2 Schwarz: 1 Strohbach: 1		BÖhme: 2 Andrei: 2	
1		7%	
Fromm: 1		6	
		40%	
		4	
		67%	
		Grozer: 4 Schops: 2	

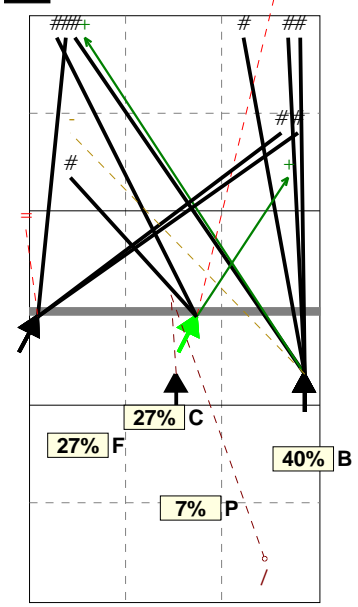
Total events Total events %
Events # Events # in %

Total Direction Chart analysis

Germany | Atk after Rec | Setter in 2 | OR[*~R~#,1][*~R~#,1];:[11]

S2

Ind. *E% N # #% = /
7 40% 15 9 60% 2 1



H: 100%(15) P: (0) T: (0)

Germany | Player detail | Reception | Setter in 2 | ;:[11]

Player	Skill	Type	S	Set	Ind	*E%	Tot	=	%	BP	pS	/	%	BP	pS	-	%	!	%	+	%	#	%	BP	pS	
Team	Reception		2		3	36%	47	1	2%	1	13	28%	15	32%	13	28%	5	11%	.	.
1 FROMM					1	11%	9	1	11%	1	4	44%	2	22%	2	22%
2 STEURWAL					6	71%	7	1	14%	1	14%	2	29%	3	43%	.	.
3 SCHWARZ					2	38%	8	1	12%	4	50%	3	38%
6 KALIBERDA					3	44%	9	3	33%	2	22%	2	22%	2	22%	.	.
7 WESTPHAL					.	.	1	1	100%
12 TILLE					4	60%	5	1	20%	1	20%	3	60%
14 STROHBAC					1	14%	7	2	29%	4	57%	1	14%
18 ANDREI					-1	.	1	1	100%

Total Zone Chart analysis

Germany | Transition | Setter in 2 | AND[*~AO~PR~3,6][*~AO~P2~3,6][*~AO~P2~3,6]

S2

12	55%	1	5%
4	33%	1	100%
Schwarz: 4 Strohbach: 4 Kaliberda: 2		Andrei: 1	
		9	
		41%	
		5	
		56%	
		Grozer: 7 Schops: 2	

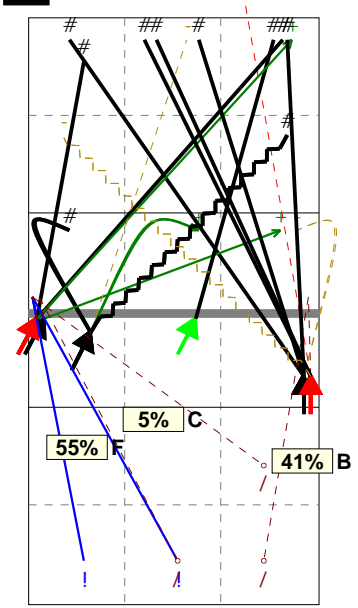
Total events Total events %
Events # Events # in %

Total Direction Chart analysis

Germany | Transition | Setter in 2 | AND[*~AO~PR~3,6][*~AO~P2~3,6][*~AO~P2~3,6]

S2

Ind. *E% N # #% = /
6 27% 22 10 45% 1 3



H: 73%(16) P: 14%(3) T: 14%(3)