

# Roster

1 AGUENIER	MB
2 GREBENNIKOV	Lib
3 HENRY	MB
4 ROUZIER	Opp
5 CLEVENOT	Out
6 TONIUTTI	Set
7 TILLIE	Out
9 NGAPETH	Out
10 LE ROUX	MB
11 LYNEEL	Out
14 LE GOFF	MB
16 MARECHAL	Opp
17 LAFITTE	MB
21 SIDIBE	Opp

## Notes:

Obecně hrají po příjmu:

Nahrávač #6

S1-> střed pouze s K1  
K2-> střed a do zóny 4  
K7->do zóny 2

S6-> střed a do zóny 2 (bez pipu)  
(smečář na jedny ruce)

S5-> K1-> **střed, pipe** a do zóny 4  
K7->střed a do zóny 2 (bez pipu)

S4-> střed, pipe a **do zóny 4**  
(účko na jedny ruce)

S3-> **střed (s K1)** a do zóny 4  
(účko na jedny ruce)

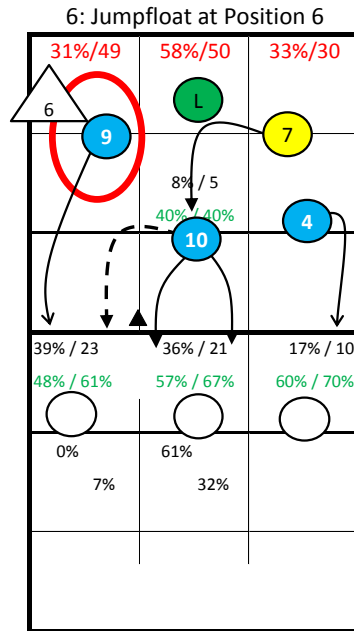
S2-> **střed, pipe** a do zóny 9  
(smečář na jedny ruce)

Obecně:

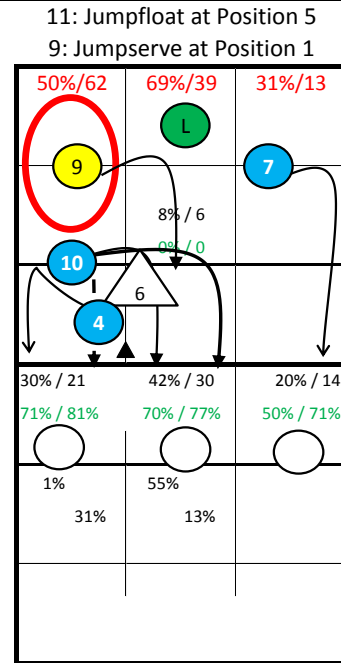
vyrvnané koncovky a vysoké míče hraje převážně Rouzier a Ngapeth

Rouzier na bloku šahá do lajny

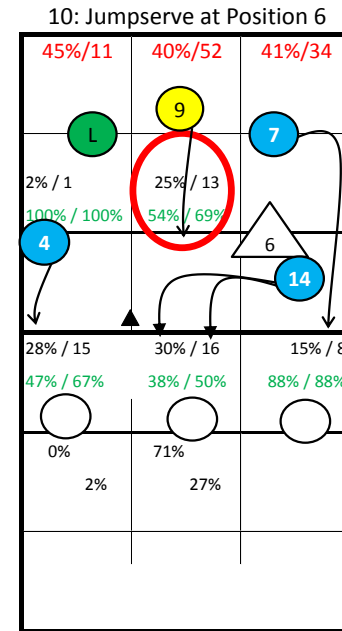
# FRANCE -



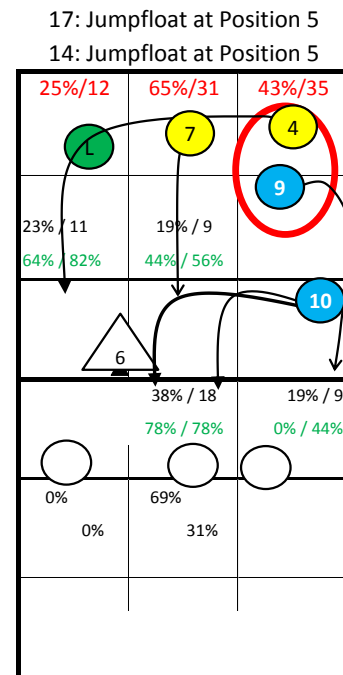
S1



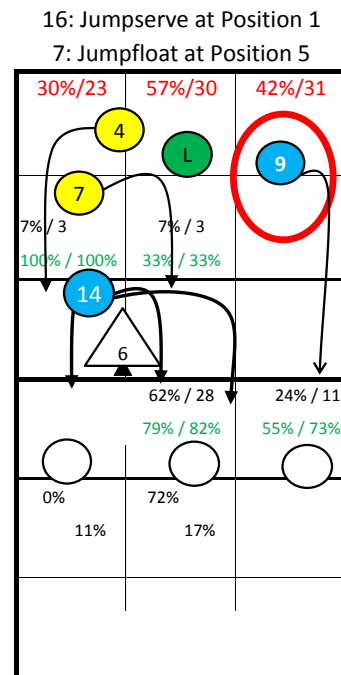
S6



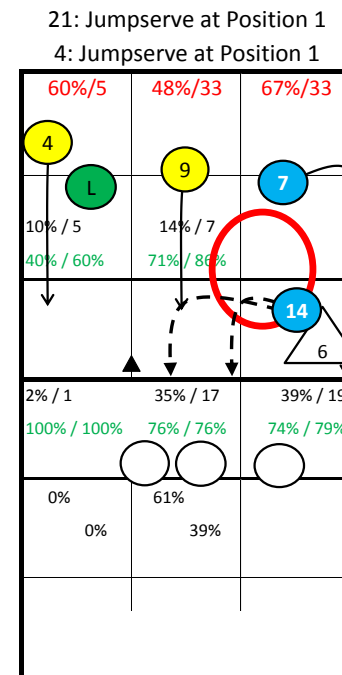
S5



S2



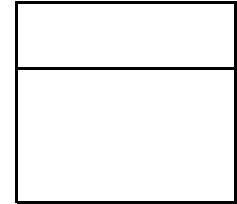
S3



S4



S1



S6



S5



S4

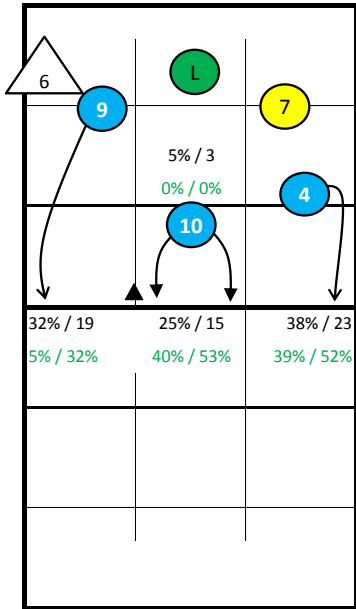


S3

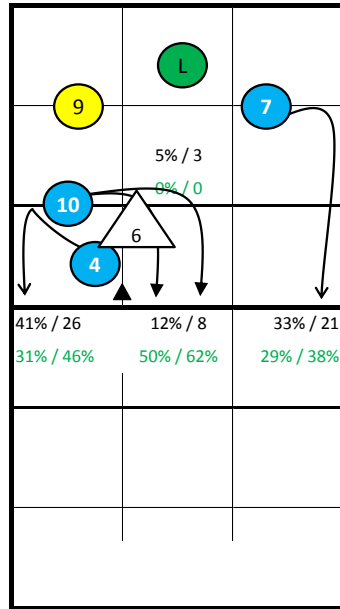


S2

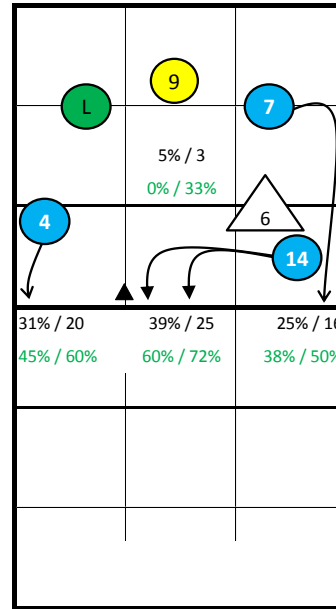
# FRANCE -



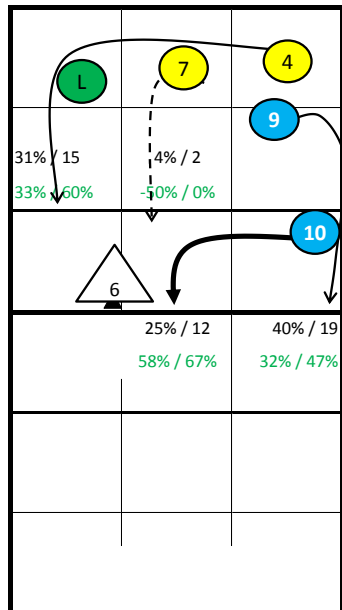
S1



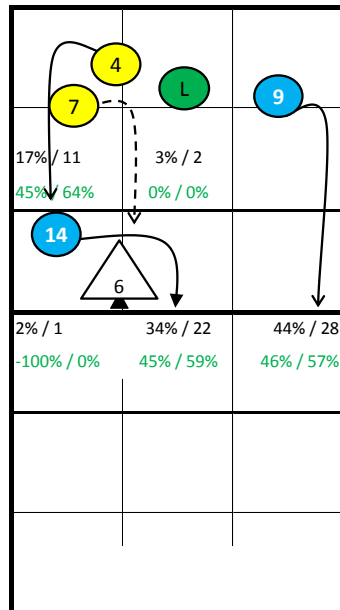
S6



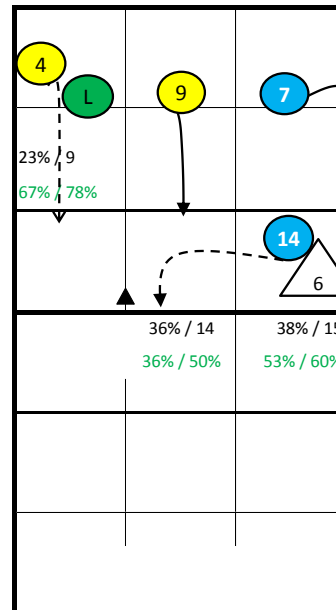
S5



S2



S3



S4

## FRANCE - all Statistics

pId	Set	Points					Serve							Reception										Attack											
		pts	P/s	easy=	all=	W-L	Σ	=	-	+	#	=%	#%	eff%	Σ	in %	=	/	-	+	#	=/%	+#%	#%	eff%	Σ	in %	=	/	!	+	#	=/%	#%	eff%
<b>FRANCE</b>	47	855	18,2	299	812	43	1151	190	403	474	84	17%	7%	32%	769	31	11	326	200	201	5%	52%	26%	47%	1110	94	73	56	85	636	15%	57%	42%		
1 AGUENIER	3	7	2,3	1	4	3	11	1	2	6	2	9%	18%	64%	0										5	0%	0	0	0	0	4	0%	80%	80%	
2 GREBENNIKOV	47	0		2	56	-56	0							147	19%	5	0	53	40	49	3%	60%	33%	57%	0										
3 HENRY	2	0			0	0	0							0											0										
4 ROUZIER	41	190	4,6	68	146	44	125	38	28	44	15	30%	12%	17%	0										271	24%	29	20	12	20	154	18%	57%	39%	
5 CLEVENOT	2	7	3,5	2	5	2	6	1	3	2	0	17%	0%	17%	7	1%	0	0	4	3	0	0%	43%	0%	43%	10	1%	1	0	1	0	7	10%	70%	60%
6 TONIUTTI	44	29	0,7	14	60	-31	170	13	77	71	9	8%	5%	39%	6	1%	2	0	4	0	0	33%	0%	0%	-33%	11	1%	0	1	0	0	6	9%	55%	45%
7 TILLIE	31	95	3,1	13	68	27	128	6	64	47	11	5%	9%	41%	164	21%	12	2	59	45	46	9%	55%	28%	47%	133	12%	6	11	10	12	71	13%	53%	41%
9 NGAPETH	40	156	3,9	73	153	3	164	47	31	67	19	29%	12%	24%	262	34%	7	6	125	61	63	5%	47%	24%	42%	229	21%	24	18	13	11	127	18%	55%	37%
10 LE ROUX	41	124	3,0	57	106	18	183	48	46	76	13	26%	7%	22%	3	0%	0	0	1	0	2	0%	67%	67%	67%	119	11%	7	1	7	8	81	7%	68%	61%
11 LYNEEL	13	24	1,8	8	28	-4	39	3	15	18	3	8%	8%	46%	64	8%	2	0	28	20	14	3%	53%	22%	50%	51	5%	5	5	5	11	20	20%	39%	20%
14 LE GOFF	41	95	2,3	16	60	35	129	7	59	61	2	5%	2%	43%	2	0%	1	0	1	0	0	50%	0%	0%	-50%	110	10%	6	5	1	7	73	10%	66%	56%
16 MARECHAL	20	51	2,6	31	58	-7	66	17	22	24	3	26%	5%	15%	111	14%	2	3	49	30	27	5%	51%	24%	47%	88	8%	14	6	6	7	40	23%	45%	23%
17 LAFITTE	18	25	1,4	5	32	-7	54	4	31	18	1	7%	2%	28%	3	0%	0	0	2	1	0	0%	33%	0%	33%	27	2%	1	1	0	3	17	7%	63%	56%
21 SIDIBE	16	40	2,5	6	24	16	30	5	5	16	4	17%	13%	50%	0										49	4%	1	4	0	6	32	10%	65%	55%	

	Block						Defense						Freeball					Set		
	Σ	=	+	#	#%	eff%	Σ	=	/-!	+#	+#%	eff%	Σ	err	bad	god	eff%	Σ	=	eff%
<b>FRANCE</b>	524	225	69	135	26%	0%	637	189	169	279	44%	14%	9	1	8	0	-33%	1042	9	69%
1 AGUENIER	5	3	1	1	20%	0%	1	0	1	0	0%	0%	0					0		
2 GREBENNIKOV	0						169	49	46	74	44%	15%	2	0	2	0	-50%	46	2	37%
3 HENRY	0						0						0					0		
4 ROUZIER	64	27	5	21	33%	2%	70	32	14	24	34%	-11%	2	0	2	0	0%	9	0	44%
5 CLEVENOT	5	3	0	0	0%	-40%	3	0	0	3	100%	100%	0					0		
6 TONIUTTI	56	23	8	14	25%	2%	72	21	24	27	38%	8%	0					735	0	75%
7 TILLIE	32	9	7	13	41%	38%	78	23	16	39	50%	21%	2	0	2	0	0%	15	1	27%
9 NGAPETH	65	39	3	10	15%	-38%	84	17	22	45	54%	33%	0					54	1	50%
10 LE ROUX	105	42	11	30	29%	0%	35	7	18	10	29%	9%	0					7	1	29%
11 LYNEEL	12	8	2	1	8%	-33%	25	5	7	13	52%	32%	1	0	1	0	-100%	1	0	0%
14 LE GOFF	89	29	17	20	22%	12%	30	10	6	14	47%	13%	1	1	0	0	-100%	7	1	0%
16 MARECHAL	19	7	2	8	42%	26%	29	12	5	12	41%	0%	0					3	0	0%
17 LAFITTE	46	23	10	7	15%	-11%	7	3	1	3	43%	0%	0					1	0	100%
21 SIDIBE	15	8	3	4	27%	7%	13	6	3	4	31%	-15%	1	0	1	0	0%	2	0	-50%

pld Set      played Sets  
 P/s          Points per Set  
 pts          Points  
 easy=        easy errors (serve, net contact, ...)  
 all=          all errors  
 W-L          points - errors  
 Σ            sum of all events  
 in %         in percent of all team events

## FRANCE - Attack-Statistic

	K1 & K2 Attacks								K1 All Attacks								K2 Attacks								K1 aft R other Ply				K1 after own Rec			
	Σ	in %	=	/	#	=/%	#%	eff	Σ	in %	=	/	#	=/%	#%	eff	Σ	in %	=	/	#	=/%	#%	eff	sum	#	#%	eff	sum	#	#%	eff
<b>FRANCE</b>	1029		85	68	592	15%	58%	43%	686		55	43	419	14%	61%	47%	343		30	25	173	16%	50%	34%	567	351	62%		118	68	58%	
4 ROUZIER	260	25%	27	19	149	18%	57%	40%	155	23%	17	12	91	19%	59%	40%	105	31%	10	7	58	16%	55%	39%	155	91	59%	40%	0			
9 NGAPETH	210	20%	19	18	118	18%	56%	39%	131	19%	11	12	77	18%	59%	41%	79	23%	8	6	41	18%	52%	34%	82	50	61%	44%	49	27	55%	37%
7 TILLIE	124	12%	6	10	65	13%	52%	40%	79	12%	5	7	47	15%	59%	44%	45	13%	1	3	18	9%	40%	31%	47	27	57%	43%	32	20	63%	47%
10 LE ROUX	113	11%	6	1	79	6%	70%	64%	90	13%	5	1	64	7%	71%	64%	23	7%	1	0	15	4%	65%	61%	88	62	70%	64%	2	2	100%	100%
14 LE GOFF	100	10%	5	5	66	10%	66%	56%	78	11%	5	3	50	10%	64%	54%	22	6%	0	2	16	9%	73%	64%	78	50	64%	54%	0			
16 MARECHAL	86	8%	14	6	39	23%	45%	22%	57	8%	7	3	31	18%	54%	37%	29	8%	7	3	8	34%	28%	-7%	40	22	55%	42%	17	9	53%	24%
11 LYNEEL	48	5%	5	5	18	21%	38%	17%	33	5%	3	4	16	21%	48%	27%	15	4%	2	1	2	20%	13%	-7%	17	8	47%	29%	16	8	50%	25%
21 SIDIBE	48	5%	1	3	32	8%	67%	58%	34	5%	1	0	25	3%	74%	71%	14	4%	0	3	7	21%	50%	29%	34	25	74%	71%	0			
17 LAFITTE	24	2%	1	1	15	8%	62%	54%	17	2%	1	1	9	12%	53%	41%	7	2%	0	0	6	0%	86%	86%	17	9	53%	41%	0			
5 CLEVENOT	10	1%	1	0	7	10%	70%	60%	7	1%	0	0	6	0%	86%	86%	3	1%	1	0	1	33%	33%	0%	5	4	80%	80%	2	2	100%	100%
1 AGUENIER	5	0%	0	0	4	0%	80%	80%	4	1%	0	0	3	0%	75%	75%	1	0%	0	0	1	0%	100%	100%	4	3	75%	75%	0			
2 GREBENNIKOV	0								0								0								0				0			
3 HENRY	0								0								0								0				0			
6 TONIUTTI	0								0								0								0				0			

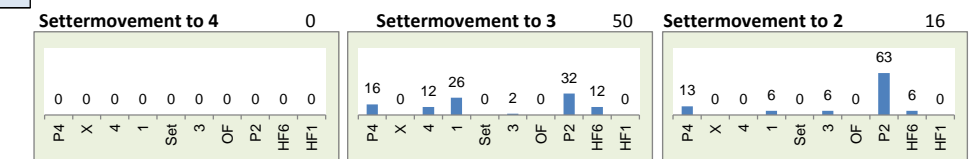
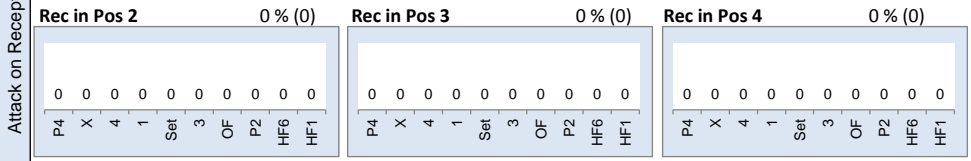
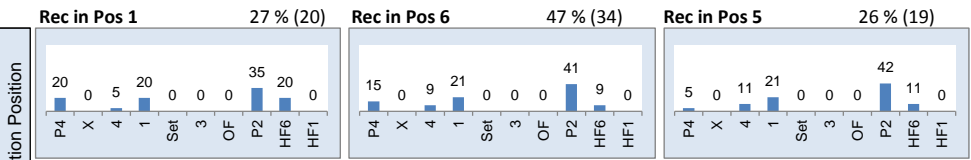
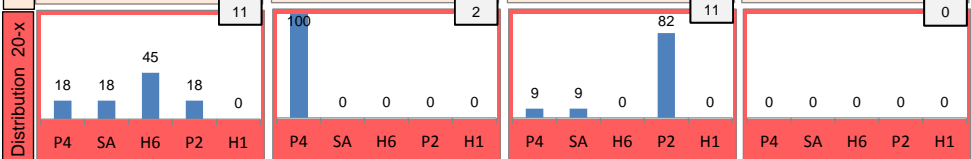
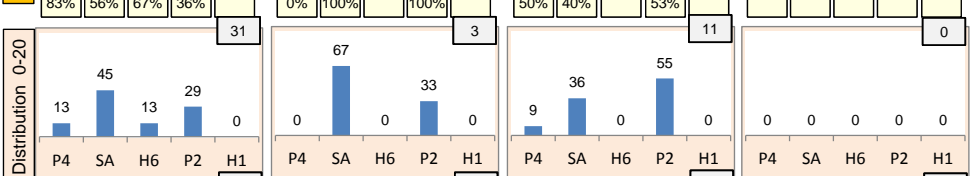
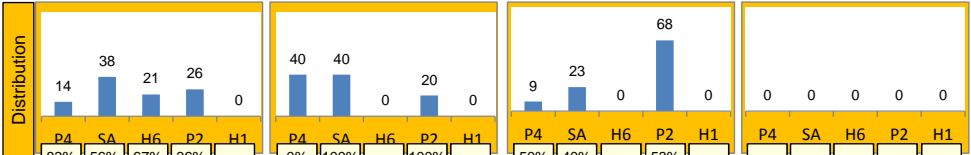
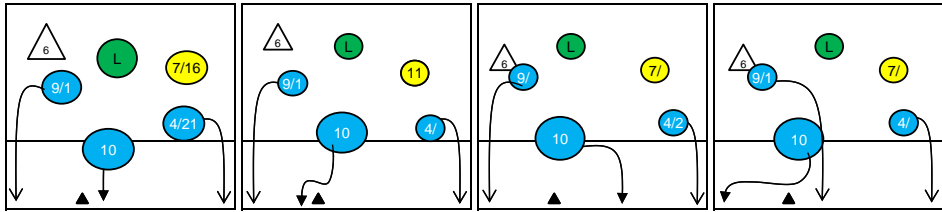
	K1 after R#+								K1 after R-!								Freeball-Attacks							
	Σ	in %	=	/	#	=/%	#%	eff	Σ	in %	=	/	#	=/%	#%	eff	Σ	in %	=	/	#	=/%	#%	eff
<b>FRANCE</b>	394		25	17	272	11%	69%	58%	292		30	26	147	19%	50%	31%	134		8	7	84	11%	63%	51%
4 ROUZIER	55	14%	6	2	42	15%	76%	62%	100	34%	11	10	49	21%	49%	28%	27	159%	2	1	17	11%	63%	52%
9 NGAPETH	70	18%	4	8	47	17%	67%	50%	61	21%	7	4	30	18%	49%	31%	28	122%	2	1	23	11%	82%	71%
7 TILLIE	48	12%	2	1	33	6%	69%	62%	31	11%	3	6	14	29%	45%	16%	18	225%	0	1	8	6%	44%	39%
10 LE ROUX	74	19%	4	1	54	7%	73%	66%	16	5%	1	0	10	6%	62%	56%	17	142%	0	0	12	0%	71%	71%
14 LE GOFF	57	14%	1	3	39	7%	68%	61%	21	7%	4	0	11	19%	52%	33%	18	129%	0	2	14	11%	78%	67%
16 MARECHAL	29	7%	5	0	19	17%	66%	48%	28	10%	2	3	12	18%	43%	25%	8	800%	3	1	1	50%	12%	-38%
11 LYNEEL	16	4%	2	1	7	19%	44%	25%	17	6%	1	3	9	24%	53%	29%	4	0	0	0	0	0%	0%	0%
21 SIDIBE	20	5%	1	0	14	5%	70%	65%	14	5%	0	0	11	0%	79%	79%	6	150%	0	1	4	17%	67%	50%
17 LAFITTE	15	4%	0	1	8	7%	53%	47%	2	1%	1	0	1	50%	50%	0%	5	125%	0	0	4	0%	80%	80%
5 CLEVENOT	7	2%	0	0	6	0%	86%	86%	0								2	0	1	0	0	50%	0%	-50%
1 AGUENIER	3	1%	0	0	3	0%	100%	100%	1	0%	0	0	0	0%	0%	0%	1	100%	0	0	1	0%	100%	100%
2 GREBENNIKOV	0								0								0							
3 HENRY	0								0								0							
6 TONIUTTI	0								0								0							



# Rotation 1

# FRANCE

Base K1 61% (42) Base K2 7% (5) Base K7 32% (22) Base KD 0% (0)



# Distribution

K1 after all R 143 45% 59% K1 after R#+ 73 52% 63% K2 Transition 72 22% 38%

	0	-	9	6%	1	1%
	-	-	67%	67%	0%	0%
	65	45%	30	21%	38	27%
	34%	54%	57%	63%	53%	63%

	0	-	9	12%	0	-
	-	-	67%	67%	-	-
	31	42%	23	32%	10	14%
	42%	58%	57%	65%	60%	70%

	0	-	4	6%	0	-
	-	-	0%	0%	-	-
	31	43%	6	8%	31	43%
	6%	29%	83%	83%	29%	42%

Reception	Σ	Σ %	=	= %	+	+ %	#	# %	+ # %	Eff
FRANCE	156	100%	10	6%	36	23%	37	24%	47%	40%
2 GREBENNIKOV	50	32%	1	2%	17	34%	13	26%	60%	58%
9 NGAPETH	49	31%	4	8%	10	20%	9	18%	39%	31%
7 TILLIE	30	19%	4	13%	7	23%	7	23%	47%	33%
16 MARECHAL	12	8%	1	8%	0	0%	4	33%	33%	25%
11 LYNEEL	10	6%	0	0%	2	20%	2	20%	40%	40%
10 LE ROUX	3	2%	0	0%	0	0%	2	67%	67%	67%

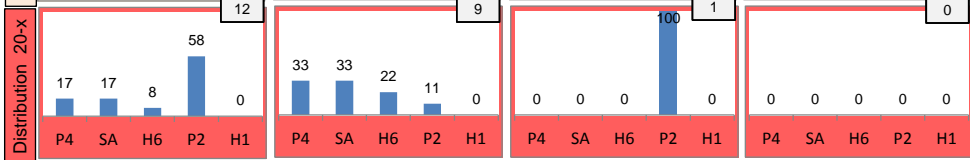
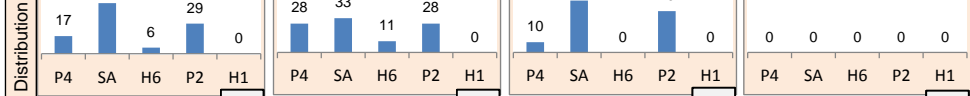
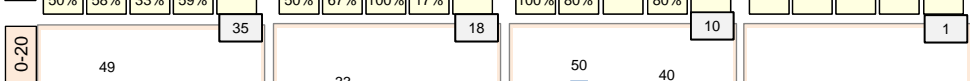
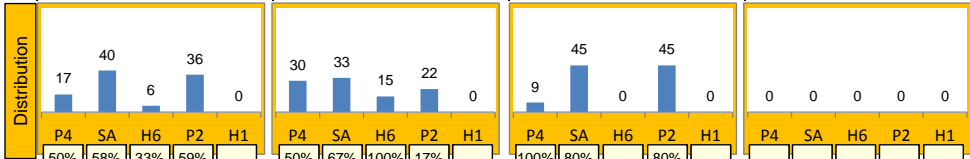
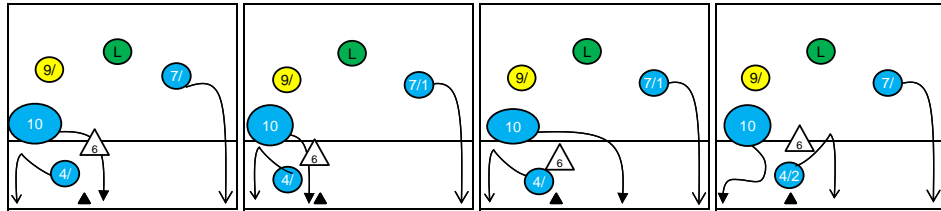
K1-Attacks after R#+	Σ	Σ %	=	= %	#	# %	Eff
FRANCE	73	100%	5	7%	46	63%	52%
9 NGAPETH	23	32%	1	4%	14	61%	48%
10 LE ROUX	20	27%	1	5%	13	65%	55%
16 MARECHAL	7	10%	2	29%	4	57%	29%
4 ROUZIER	6	8%	1	17%	3	50%	33%
7 TILLIE	5	7%	0	0%	3	60%	60%
11 LYNEEL	5	7%	0	0%	3	60%	60%
5 CLEVENOT	2	3%	0	0%	2	100%	100%

K2-Attacks - Transition	Σ	Σ %	=	= %	#	# %	Eff
FRANCE	72	100%	7	10%	27	38%	22%
9 NGAPETH	22	31%	2	9%	11	50%	32%
4 ROUZIER	18	25%	1	6%	9	50%	44%
16 MARECHAL	11	15%	2	18%	1	9%	-27%
10 LE ROUX	6	8%	0	0%	3	50%	50%
11 LYNEEL	6	8%	2	33%	1	17%	-17%
7 TILLIE	4	6%	0	0%	0	0%	0%
21 SIDIBE	3	4%	0	0%	0	0%	0%

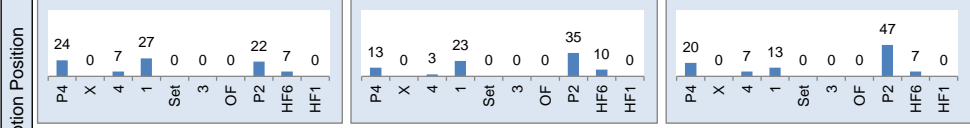
# Rotation 6

# FRANCE

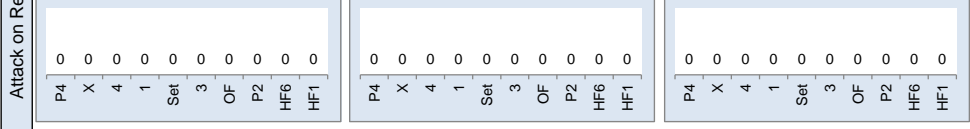
Base K1 55% (47) Base K2 31% (27) Base K7 13% (11) Base KD 1% (1)



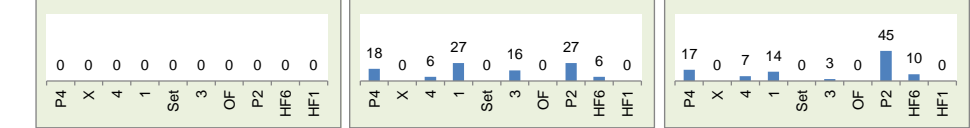
Rec in Pos 1 47% (41) Rec in Pos 6 36% (31) Rec in Pos 5 17% (15)



Rec in Pos 2 0% (0) Rec in Pos 3 0% (0) Rec in Pos 4 0% (0)



Settermovement to 4 0 Settermovement to 3 49 Settermovement to 2 29



# Distribution

K1 after all R 136 49% 61% K1 after R# 87 60% 71% K2 Transition 77 25% 44%

	0	-	8	6%	0	-	0	-	7	8%	0	-	0	-	8	10%	1	1%
	-	-	50%	63%	-	-	-	-	71%	71%	-	-	-	-	-12%	38%	0%	0%
	46	34%	44	32%	38	28%	28	32%	35	40%	17	20%	37	48%	7	9%	24	31%
	48%	61%	59%	70%	37%	50%	54%	68%	66%	74%	53%	71%	30%	49%	71%	71%	17%	33%

Reception	Σ	Σ %	=	= %	#	# %	+ # %	Eff
FRANCE	151	100%	6	4%	41	27%	48	32%
9 NGAPETH	62	41%	2	3%	13	21%	20	32%
2 GREBENNIKOV	39	26%	0	0%	11	28%	16	41%
16 MARECHAL	18	12%	0	0%	6	33%	4	22%
11 LYNEEL	16	11%	0	0%	6	38%	5	31%
7 TILLIE	13	9%	3	23%	4	31%	3	23%
17 LAFITTE	2	1%	0	0%	1	50%	0	0%

K1-Attacks after R#	Σ	Σ %	=	= %	#	# %	Eff
FRANCE	87	100%	7	8%	62	71%	60%
10 LE ROUX	30	34%	2	7%	23	77%	70%
4 ROUZIER	21	24%	3	14%	16	76%	62%
7 TILLIE	8	9%	0	0%	7	88%	75%
9 NGAPETH	7	8%	0	0%	4	57%	57%
21 SIDIBE	6	7%	1	17%	2	33%	17%
16 MARECHAL	5	6%	1	20%	4	80%	60%
11 LYNEEL	4	5%	0	0%	2	50%	25%

K2-Attacks - Transitor	Σ	Σ %	=	= %	#	# %	Eff
FRANCE	77	100%	5	6%	34	44%	25%
4 ROUZIER	27	35%	2	7%	12	44%	30%
7 TILLIE	19	25%	1	5%	6	32%	16%
9 NGAPETH	8	10%	2	25%	3	38%	-12%
10 LE ROUX	8	10%	0	0%	5	63%	62%
21 SIDIBE	6	8%	0	0%	3	50%	0%
16 MARECHAL	4	5%	0	0%	2	50%	50%
11 LYNEEL	2	3%	0	0%	0	0%	-50%

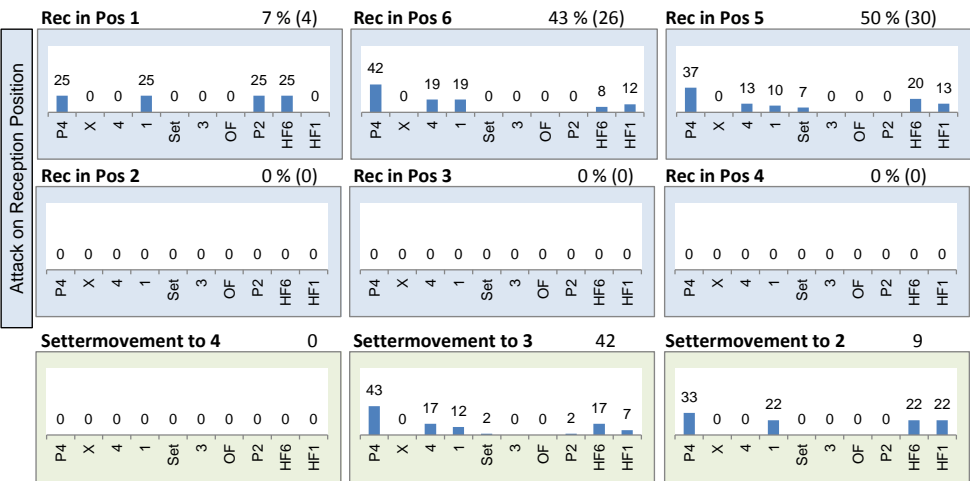
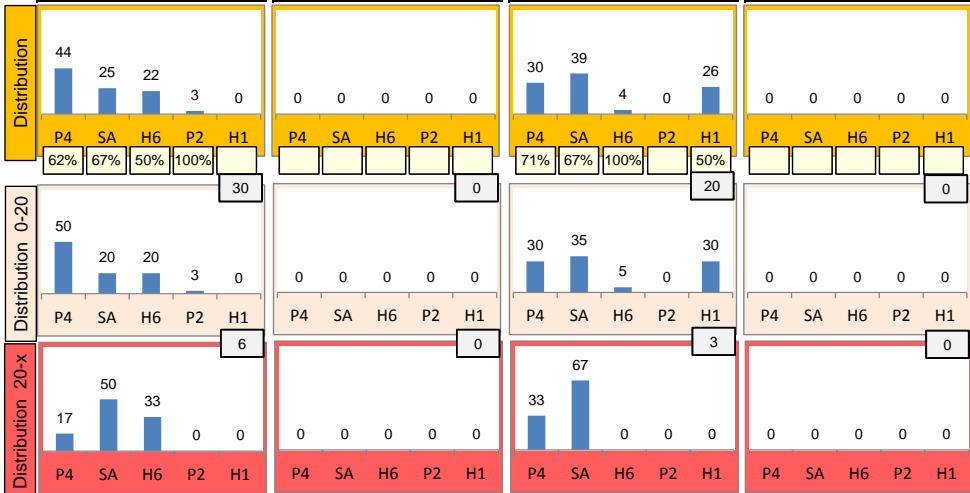
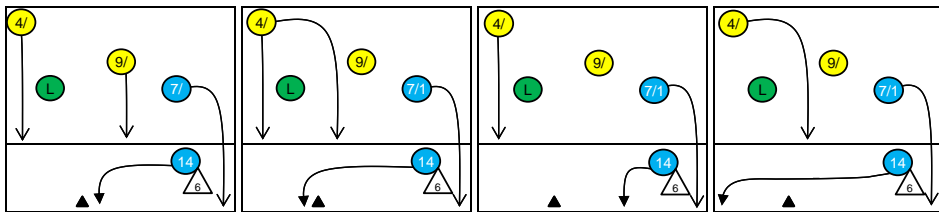




# Rotation 4

# FRANCE

Base K1 61 % (36) Base K2 0 % (0) Base K7 39 % (23) Base KD 0 % (0)



# Distribution

K1 after all R 92 52% 66% K1 after R#+ 58 64% 72% K2 Transition 38 55% 66%

Player	Count	%	Count	%	Count	%	Count	%	Count	%		
FRANCE	18	20%	11	12%	0	-	7	12%	9	16%	0	-
7 TILLIE	39%	61%	55%	73%	-	-	57%	71%	56%	78%	-	-
9 NGAPETH	1	1%	23	25%	39	42%	1	2%	18	31%	23	40%
16 MARECHAL	100%	100%	70%	74%	46%	62%	100%	100%	67%	72%	65%	70%
11 LYNEEL	0	0%	0	0%	0	0%	0	0%	0	0%	0	0%
2 GREBENNIKOV	0	0%	0	0%	0	0%	0	0%	0	0%	0	0%
5 CLEVENOT	0	0%	0	0%	0	0%	0	0%	0	0%	0	0%
14 LE GOFF	14	37%	0	-	1	3%	14	37%	0	-	1	3%
16 MARECHAL	50%	64%	-	-	100%	100%	50%	64%	-	-	100%	100%
4 ROUZIER	0	-	6	16%	17	45%	0	-	6	16%	17	45%
9 NGAPETH	-	-	50%	67%	59%	65%	-	-	50%	67%	59%	65%

Reception	∑	∑ %	=	= %	+	+ %	#	# %	+ # %	Eff
FRANCE	106	100%	4	4%	33	31%	27	25%	57%	53%
7 TILLIE	33	31%	1	3%	12	36%	11	33%	70%	67%
9 NGAPETH	33	31%	1	3%	11	33%	6	18%	52%	48%
16 MARECHAL	25	24%	2	8%	6	24%	6	24%	48%	40%
11 LYNEEL	7	7%	0	0%	3	43%	1	14%	57%	57%
2 GREBENNIKOV	5	5%	0	0%	0	0%	3	60%	60%	60%
5 CLEVENOT	2	2%	0	0%	1	50%	0	0%	50%	50%

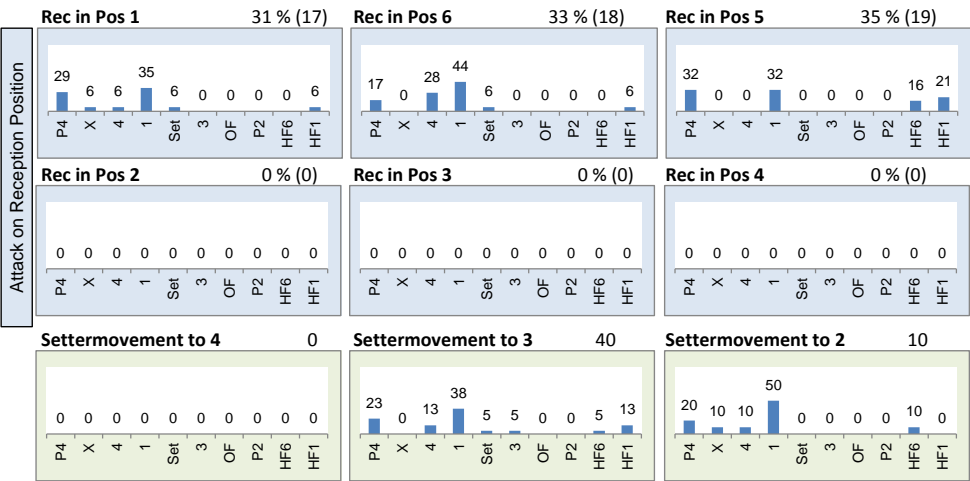
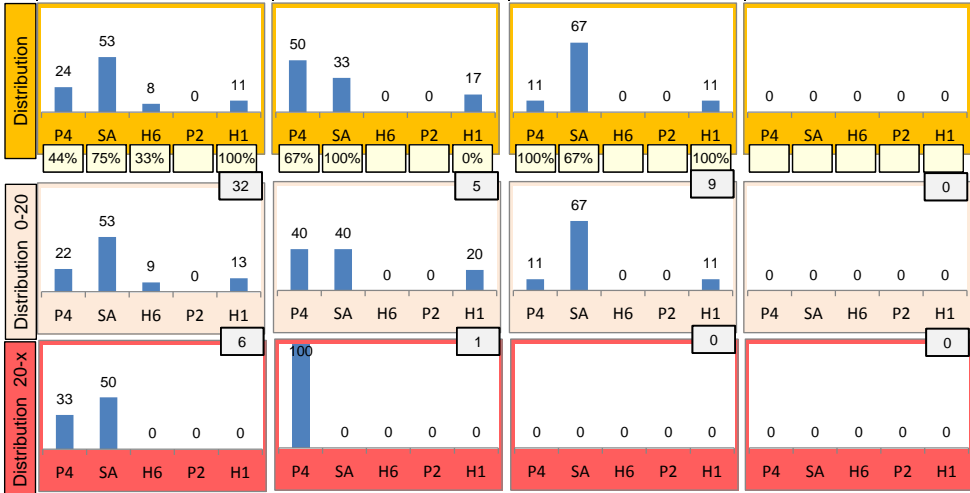
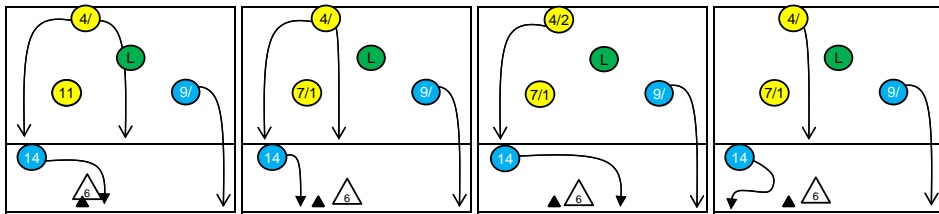
K1-Attacks after R#+	∑	∑ %	=	= %	#	# %	Eff
FRANCE	58	100%	3	5%	42	72%	64%
7 TILLIE	15	26%	1	7%	10	67%	60%
14 LE GOFF	15	26%	0	0%	11	73%	73%
16 MARECHAL	8	14%	1	13%	6	75%	62%
4 ROUZIER	6	10%	0	0%	5	83%	67%
9 NGAPETH	6	10%	0	0%	6	100%	100%
5 CLEVENOT	2	3%	0	0%	1	50%	50%
17 LAFITTE	2	3%	0	0%	1	50%	0%

K2-Attacks - Transitor	∑	∑ %	=	= %	#	# %	Eff
FRANCE	38	100%	1	3%	25	66%	55%
4 ROUZIER	11	29%	0	0%	7	64%	45%
7 TILLIE	11	29%	0	0%	7	64%	64%
14 LE GOFF	5	13%	0	0%	3	60%	40%
16 MARECHAL	5	13%	1	20%	3	60%	40%
21 SIDIBE	2	5%	0	0%	1	50%	50%
5 CLEVENOT	1	3%	0	0%	1	100%	100%
9 NGAPETH	1	3%	0	0%	1	100%	100%

# Rotation 3

# FRANCE

Base K1 72% (38) Base K2 11% (6) Base K7 17% (9) Base KD 0% (0)



# Distribution

K1 after all R 93 47% 59% K1 after R# 52 69% 75% K2 Transition 58 45% 59%

Category	P4	SA	H6	P2	H1	
K1 after all R	24	26%	3	3%	0	-
K1 after R#	6	12%	3	6%	0	-
K2 Transition	14	24%	3	5%	0	-

Reception	Σ	Σ %	=	= %	+	+ %	#	# %	+ # %	Eff
FRANCE	104	100%	6	6%	28	27%	26	25%	52%	46%
9 NGAPETH	31	30%	2	6%	9	29%	6	19%	48%	42%
2 GREBENNIKOV	30	29%	1	3%	5	17%	13	43%	60%	57%
7 TILLIE	23	22%	3	13%	5	22%	5	22%	43%	30%
16 MARECHAL	12	12%	0	0%	7	58%	0	0%	58%	58%
11 LYNEEL	6	6%	0	0%	2	33%	2	33%	67%	67%
6 TONIUTTI	2	2%	0	0%	0	0%	0	0%	0%	0%

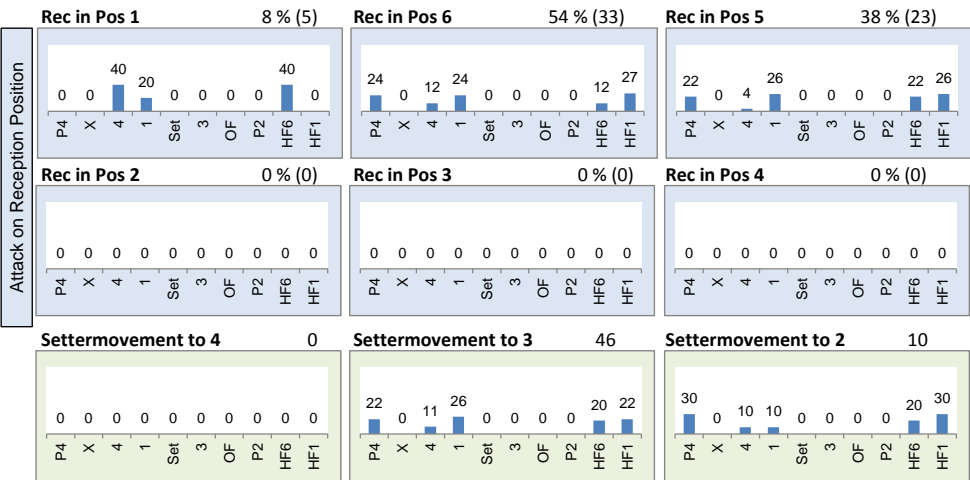
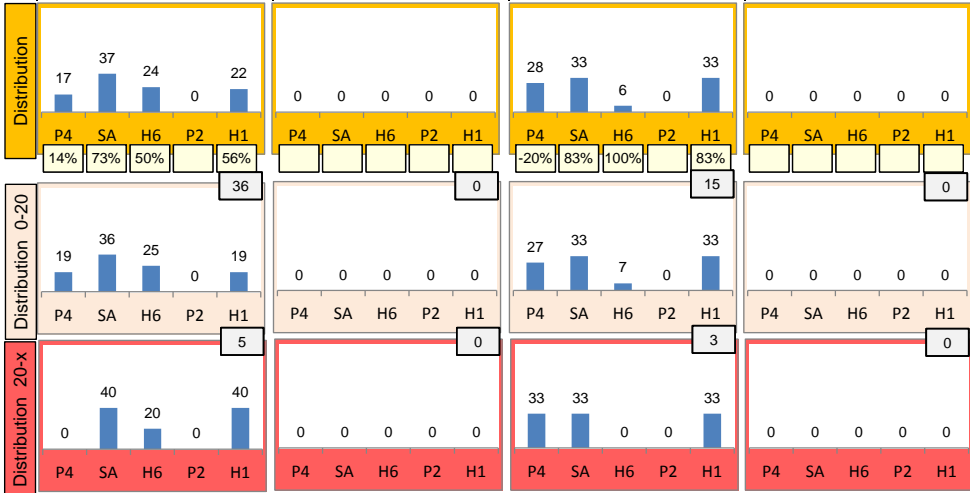
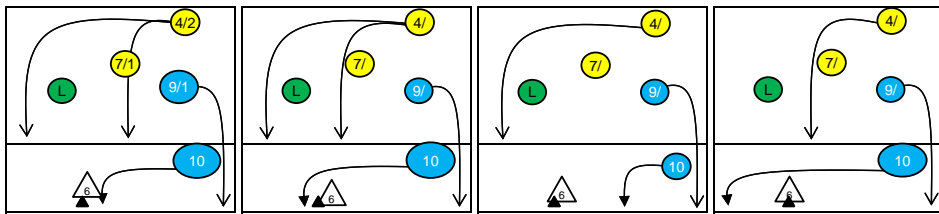
K1-Attacks after R#	Σ	Σ %	=	= %	#	# %	Eff
FRANCE	52	100%	0	0%	39	75%	69%
14 LE GOFF	24	46%	0	0%	19	79%	75%
9 NGAPETH	12	23%	0	0%	9	75%	58%
17 LAFITTE	4	8%	0	0%	3	75%	75%
4 ROUZIER	3	6%	0	0%	3	100%	100%
7 TILLIE	3	6%	0	0%	1	33%	33%
16 MARECHAL	2	4%	0	0%	1	50%	50%
21 SIDIBE	2	4%	0	0%	1	50%	50%

K2-Attacks - Transition	Σ	Σ %	=	= %	#	# %	Eff
FRANCE	58	100%	4	7%	34	59%	45%
9 NGAPETH	28	48%	2	7%	16	57%	46%
4 ROUZIER	14	24%	1	7%	10	71%	57%
14 LE GOFF	9	16%	0	0%	6	67%	56%
11 LYNEEL	2	3%	0	0%	1	50%	50%
17 LAFITTE	2	3%	0	0%	1	50%	50%
5 CLEVENOT	1	2%	1	100%	0	0%	-100%
7 TILLIE	1	2%	0	0%	0	0%	0%

# Rotation 2

# FRANCE

Base K1 69% (41) Base K2 0% (0) Base K7 31% (18) Base KD 0% (0)



# Distribution

K1 after all R 104 47% 63% K1 after R#+ 61 52% 67% K2 Transition 44 27% 50%

Player	Count	%	Count	%	Count	%	Count	%	Count	%		
FRANCE	33	32%	11	11%	0	-	15	25%	11	18%	0	-
9 NGAPETH	64%	76%	55%	64%	-	-	67%	80%	55%	64%	-	-
7 TILLIE	0	-	24	23%	36	35%	0	-	22	36%	13	21%
16 MARECHAL	-	-	75%	75%	11%	42%	-	-	77%	77%	-8%	38%
2 GREBENNIKOV	17	39%	2	5%	0	-	41%	65%	-50%	0%	-	-
11 LYNEEL	1	2%	3	7%	21	48%	1	2%	3	7%	21	48%
5 CLEVENOT	-100%	0%	67%	67%	24%	43%	-100%	0%	67%	67%	24%	43%

Reception	Σ	Σ %	=	= %	+	+ %	#	# %	+ # %	Eff
FRANCE	116	100%	4	3%	27	23%	34	29%	53%	49%
9 NGAPETH	35	30%	1	3%	5	14%	11	31%	46%	43%
7 TILLIE	31	27%	0	0%	9	29%	11	35%	65%	65%
16 MARECHAL	26	22%	1	4%	7	27%	7	27%	54%	50%
2 GREBENNIKOV	12	10%	1	8%	2	17%	2	17%	33%	25%
11 LYNEEL	11	9%	1	9%	3	27%	3	27%	55%	45%
5 CLEVENOT	1	1%	0	0%	1	100%	0	0%	100%	100%

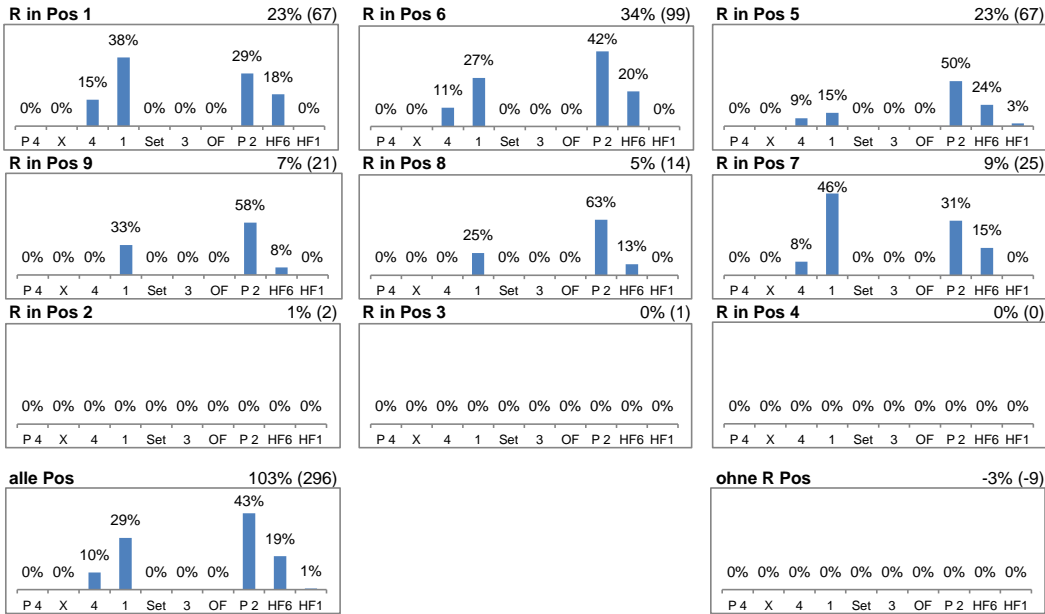
K1-Attacks after R#+	Σ	Σ %	=	= %	#	# %	Eff
FRANCE	61	100%	6	10%	41	67%	52%
10 LE ROUX	19	31%	0	0%	15	79%	79%
4 ROUZIER	10	16%	2	20%	8	80%	60%
7 TILLIE	10	16%	1	10%	7	70%	60%
9 NGAPETH	8	13%	1	13%	4	50%	0%
16 MARECHAL	4	7%	1	25%	1	25%	0%
21 SIDIBE	3	5%	0	0%	3	100%	100%
11 LYNEEL	2	3%	1	50%	0	0%	-50%

K2-Attacks - Transitor	Σ	Σ %	=	= %	#	# %	Eff
FRANCE	44	100%	9	20%	22	50%	27%
9 NGAPETH	17	39%	1	6%	9	53%	41%
4 ROUZIER	14	32%	4	29%	8	57%	29%
10 LE ROUX	6	14%	1	17%	4	67%	50%
16 MARECHAL	3	7%	3	100%	0	0%	-100%
11 LYNEEL	2	5%	0	0%	0	0%	0%
7 TILLIE	1	2%	0	0%	0	0%	0%
21 SIDIBE	1	2%	0	0%	1	100%	100%

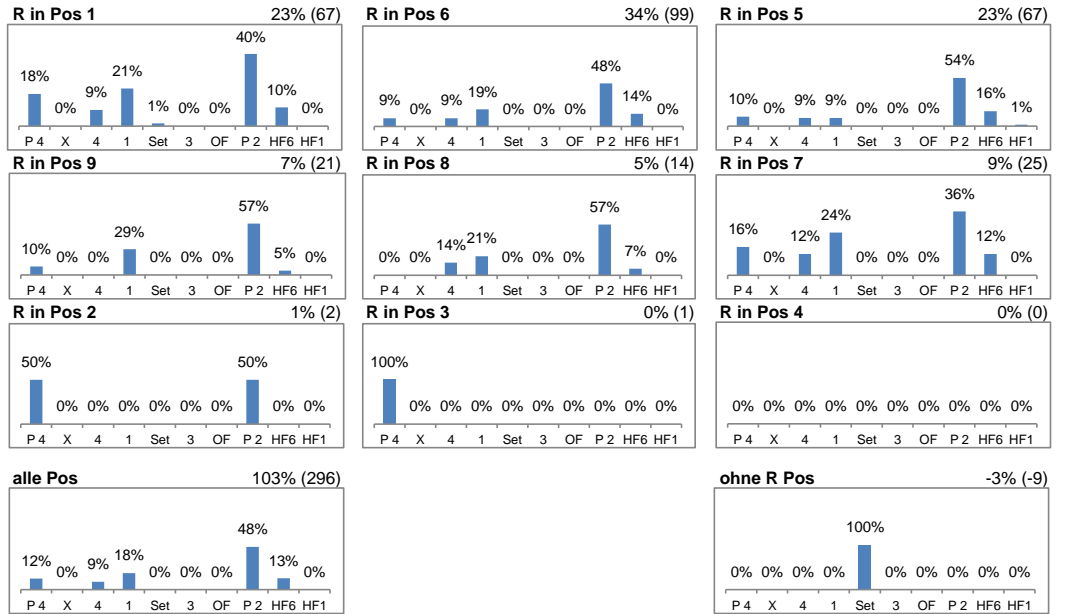


# Attacks depending on Reception Position - FRANCE

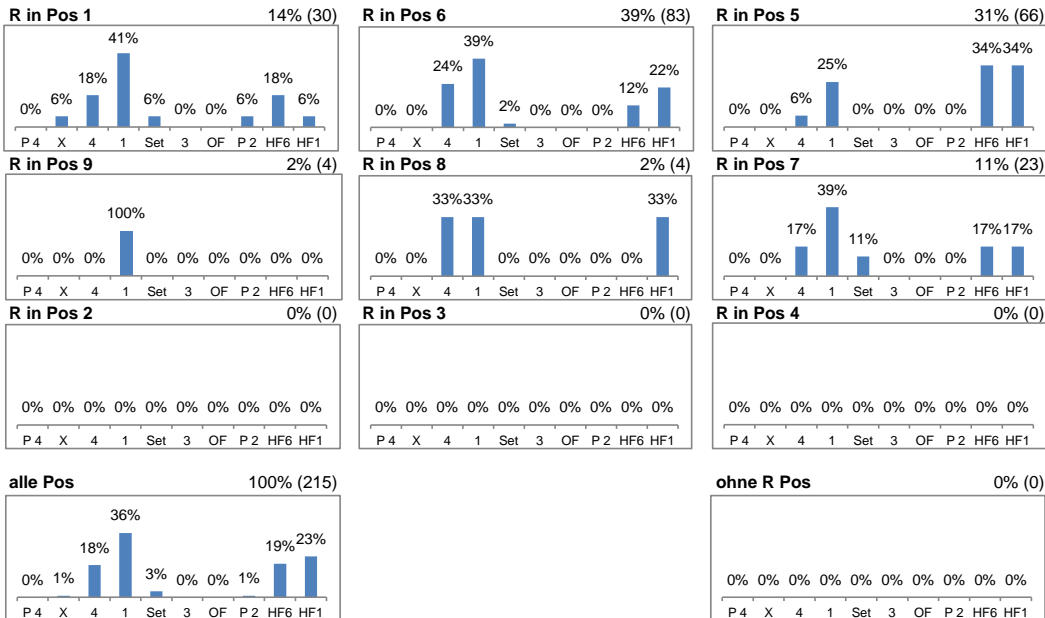
## Setter back (S1, S6, S5) - R#+



## Setter back (S1, S6, S5) - all Receptions



## Setter front (S4, S3, S2) - R#+



## Setter front (S4, S3, S2) - all Receptions

