

# Roster

1 Bratov G.	Set
2 Petkov	Out
3 Zhekov	Set
7 Gradinarov	Out
10 Uchikov	Opp
11 Nikolov	Opp
12 Yosifov	MB
13 Salparov	Lib
14 Todorov	MB
15 Aleksiev	Out
16 Ivanov	Out
17 Penchev N.	Out
18 Nikolov	MB
23 Agontsev	Set

## Notes:

Obecně hrají po příjmu:

Nahrávač #1

S1-> K1-> střed a pipe  
K7-> střed a do zóny 2  
(po R- do zóny 4 a do zóny 2)

S6-> (bez pipu)  
(po R- do zóny 2)

S5-> podání na Kooye -> 50% nahrávek  
do zóny 4 (bez pipu)  
(po R- do zóny 4)

S4-> podání na Kooye -> do zóny 4 a 9  
(bez pipu a středu)  
(po R- hraje na dlouho)

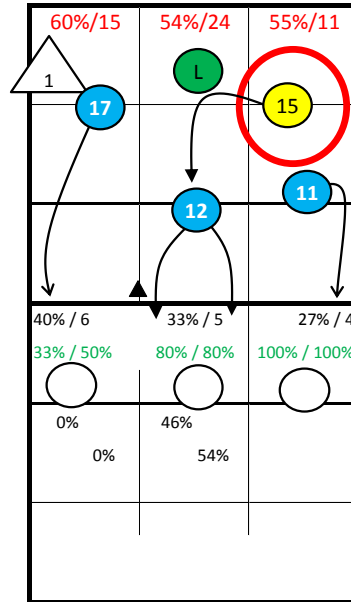
S3-> střed, pipe a do zóny 9  
(po R- do zóny 4)

S2-> střed, pipe (s K1) a do zóny 9

# BULGARIA

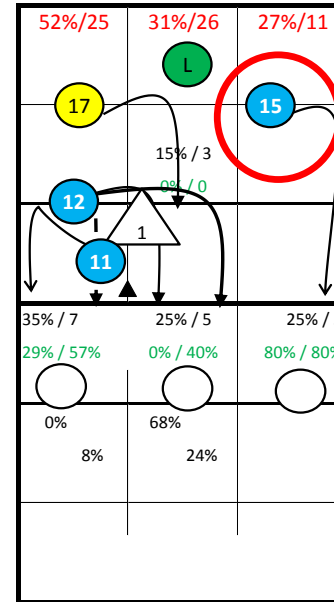
3: Jumpserve at Position 5

1: Jumpfloat at Position 1



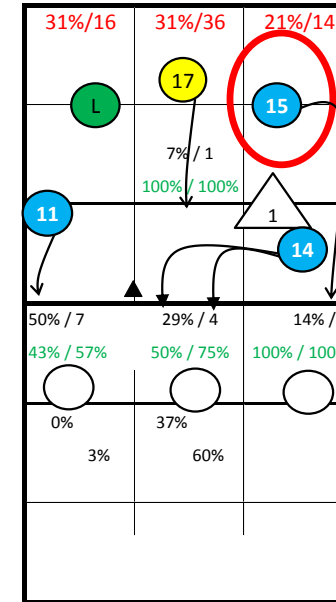
S1

17: Jumpserve at Position 6



S6

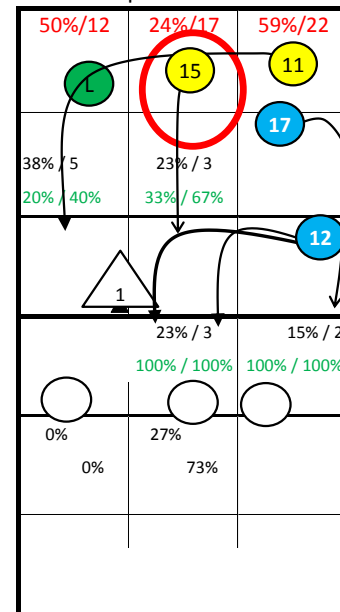
12: Jumpserve at Position 1



S5

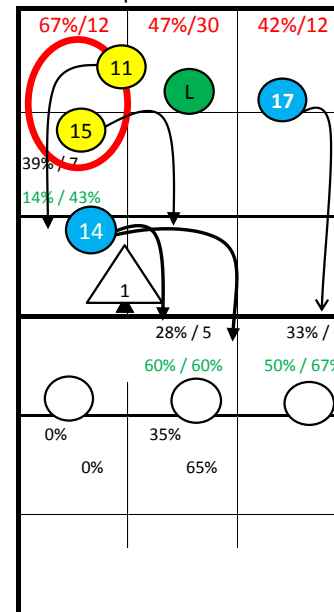
18: Jumpserve at Position 6

14: Jumpfloat at Position 5



S2

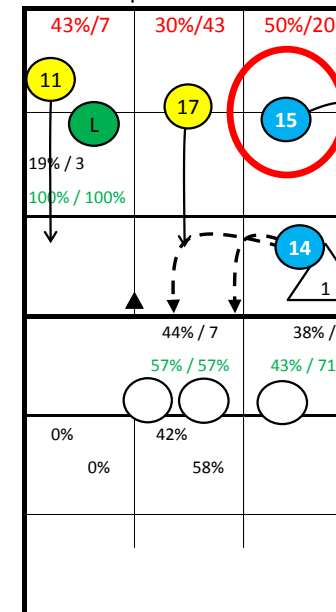
15: Jumpserve at Position 1



S3

10: Jumpserve at Position 1

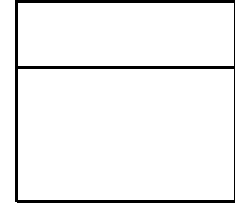
11: Jumpserve at Position 1



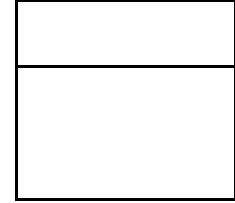
S4



S1



S6



S5



S4

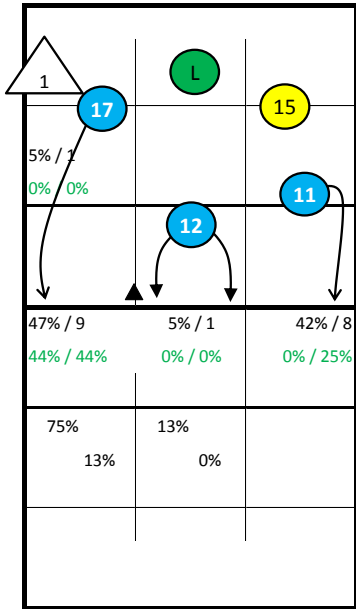


S3

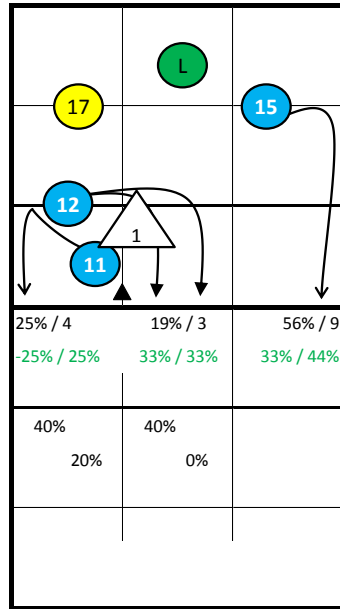


S2

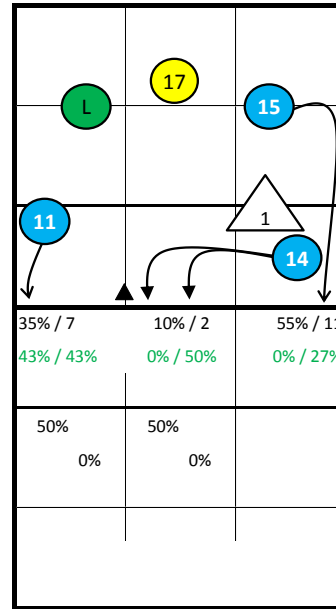
# BULGARIA -



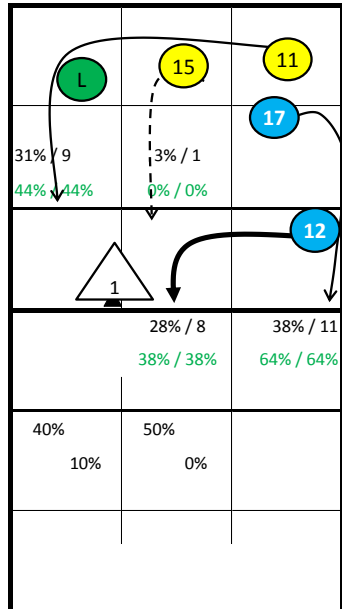
S1



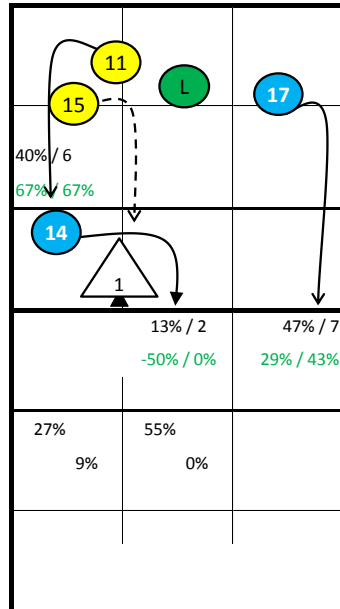
S6



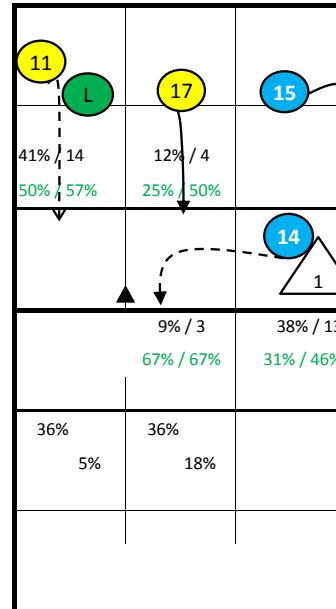
S5



S2



S3



S4

## BULGARIA - all Statistics

pId	Points					Serve							Reception										Attack												
	Set	pts	P/s	easy=	all=	W-L	Σ	=	-	+	#	=%	#%	eff%	Σ	in %	=	/	-	+	#	=/%	+#%	#%	eff%	Σ	in %	=	/	!	+	#	=/%	#%	eff%
<b>BULGARIA</b>	25	413	16,5	164	450	-37	579	118	212	217	32	20%	6%	23%	432		31	5	196	107	93	8%	47%	22%	38%	612		33	57	36	45	302	15%	49%	35%
1 Bratoev G.	18	18	1,0	6	19	-1	41	3	19	17	2	7%	5%	39%	2	0%	0	0	2	0	0	0%	0%	0%	0%	11	2%	1	1	0	2	3	18%	27%	9%
2 Petkov	8	5	0,6	5	12	-7	10	3	4	3	0	30%	0%	0%	12	3%	2	0	9	1	0	17%	8%	0%	-8%	12	2%	2	1	1	0	3	25%	25%	0%
3 Zhekov	9	6	0,7	6	17	-11	36	6	9	18	3	17%	8%	42%	0											4	1%	0	0	2	0	1	0%	25%	25%
7 Gradinarov	20	21	1,1	15	33	-12	35	13	7	13	2	37%	6%	6%	36	8%	5	0	23	4	4	14%	22%	11%	8%	44	7%	2	4	3	0	17	14%	39%	25%
10 Uchikov	13	30	2,3	10	19	11	25	7	8	9	1	28%	4%	12%	0											53	9%	3	5	1	1	28	15%	53%	38%
11 Nikolov	22	101	4,6	31	81	20	86	18	26	37	5	21%	6%	28%	0											169	28%	10	19	8	15	85	17%	50%	33%
12 Yosifov	22	47	2,1	26	53	-6	82	22	19	36	5	27%	6%	23%	3	1%	0	0	1	0	2	0%	67%	67%	67%	39	6%	2	2	0	3	22	10%	56%	46%
13 Salparov	23	0			31	-31	0							115	27%	11	1	42	31	30		10%	53%	26%	43%	0									
14 Todorov	15	39	2,6	6	30	9	64	4	39	20	1	6%	2%	27%	1	0%	0	0	1	0	0	0%	0%	0%	0%	33	5%	1	1	1	1	23	6%	70%	64%
15 Aleksiev	21	57	2,7	20	57	0	62	13	31	18	0	21%	0%	8%	85	20%	4	1	41	25	14	6%	45%	16%	40%	117	19%	6	14	9	11	53	17%	45%	28%
16 Ivanov	11	0			5	-5	0							21	5%	2	0	6	7	6		10%	62%	29%	52%	0									
17 Penchev N.	25	60	2,4	25	56	4	79	20	30	23	6	25%	8%	11%	153	35%	7	3	69	38	36	7%	49%	24%	42%	100	16%	3	9	10	7	51	12%	51%	39%
18 Nikolov	10	29	2,9	12	27	2	41	9	9	16	7	22%	17%	34%	4	1%	0	0	2	1	1	0%	50%	25%	50%	29	5%	3	1	1	5	16	14%	55%	41%
23 Agontsev	10	0		2	9	-9	18	0	11	7	0	0%	0%	39%	0											1	0%	0	0	0	0	0	0%	0%	0%

	Block						Defense						Freeball					Set		
	Σ	=	+	#	#%	eff%	Σ	=	/-!	+#	+#%	eff%	Σ	err	bad	god	eff%	Σ	=	eff%
<b>BULGARIA</b>	355	143	57	79	22%	1%	321	63	95	163	51%	31%	11	1	10	0	-18%	584	4	81%
1 Bratoev G.	35	9	8	13	37%	37%	28	3	14	11	39%	29%	1	0	1	0	0%	255	2	89%
2 Petkov	8	4	1	2	25%	-12%	1	0	1	0	0%	0%	0					1	0	100%
3 Zhekov	16	7	2	2	13%	-19%	18	4	11	3	17%	-6%	0					162	0	67%
7 Gradinarov	16	8	3	2	13%	-12%	8	1	2	5	63%	50%	0					1	0	100%
10 Uchikov	9	4	2	1	11%	-11%	9	0	2	7	78%	78%	1	0	1	0	-100%	2	0	100%
11 Nikolov	54	21	5	11	20%	-7%	49	12	12	25	51%	27%	2	0	2	0	0%	7	1	57%
12 Yosifov	77	27	16	20	26%	12%	10	0	4	6	60%	60%	2	0	2	0	0%	6	0	83%
13 Salparov	0						77	20	15	42	55%	29%	0					32	0	62%
14 Todorov	52	21	7	15	29%	8%	12	3	4	5	42%	17%	0					3	0	100%
15 Aleksiev	26	15	1	4	15%	-31%	39	5	12	22	56%	44%	1	0	1	0	0%	8	0	62%
16 Ivanov	0						17	3	4	10	59%	41%	0					3	0	100%
17 Penchev N.	27	11	6	3	11%	-7%	39	6	11	22	56%	41%	3	0	3	0	0%	7	0	71%
18 Nikolov	29	11	6	6	21%	10%	6	3	2	1	17%	-33%	0					4	0	0%
23 Agontsev	6	5	0	0	0%	-83%	7	2	1	4	57%	29%	1	1	0	0	-100%	93	1	95%

pId Set      played Sets  
 P/s          Points per Set  
 pts          Points  
 easy=        easy errors (serve, net contact, ...)  
 all=          all errors  
 W-L          points - errors  
 Σ            sum of all events  
 in %         in percent of all team events

## BULGARIA - Attack-Statistic

	K1 & K2 Attacks								K1 All Attacks								K2 Attacks								K1 aft R other Ply				K1 after own Rec			
	Σ	in %	=	/	#	=/%	#%	eff	Σ	in %	=	/	#	=/%	#%	eff	Σ	in %	=	/	#	=/%	#%	eff	sum	#	#%	eff	sum	#	#%	eff
<b>BULGARIA</b>	574		32	55	285	15%	50%	34%	364		20	35	198	15%	54%	39%	210		12	20	87	15%	41%	26%	328	176	54%		36	22	61%	
11 Nikolov	168	29%	10	18	85	17%	51%	34%	96	26%	6	10	49	17%	51%	34%	72	34%	4	8	36	17%	50%	33%	96	49	51%	34%	0			
15 Aleksiev	114	20%	6	14	50	18%	44%	26%	68	19%	2	10	35	18%	51%	34%	46	22%	4	4	15	17%	33%	15%	57	28	49%	30%	11	7	64%	55%
17 Penchev N.	93	16%	3	9	48	13%	52%	39%	55	15%	3	4	31	13%	56%	44%	38	18%	0	5	17	13%	45%	32%	38	20	53%	39%	17	11	65%	53%
10 Uchikov	53	9%	3	5	28	15%	53%	38%	31	9%	2	4	20	19%	65%	45%	22	10%	1	1	8	9%	36%	27%	31	20	65%	45%	0			
7 Gradinarov	42	7%	2	4	15	14%	36%	21%	22	6%	2	2	10	18%	45%	27%	20	10%	0	2	5	10%	25%	15%	16	7	44%	31%	6	3	50%	17%
12 Yosifov	37	6%	2	2	21	11%	57%	46%	36	10%	2	2	21	11%	58%	47%	1	0%	0	0	0	0%	0%	0%	34	20	59%	47%	2	1	50%	50%
14 Todorov	29	5%	1	1	20	7%	69%	62%	26	7%	0	1	19	4%	73%	69%	3	1%	1	0	1	33%	33%	0%	26	19	73%	69%	0			
18 Nikolov	27	5%	3	1	15	15%	56%	41%	22	6%	2	1	12	14%	55%	41%	5	2%	1	0	3	20%	60%	40%	22	12	55%	41%	0			
2 Petkov	11	2%	2	1	3	27%	27%	0%	8	2%	1	1	1	25%	12%	-12%	3	1%	1	0	2	33%	67%	33%	8	1	13%	-12%	0			
1 Bratov G.	0								0								0								0				0			
3 Zhekov	0								0								0								0				0			
13 Salparov	0								0								0								0				0			
16 Ivanov	0								0								0								0				0			
23 Agontsev	0								0								0								0				0			

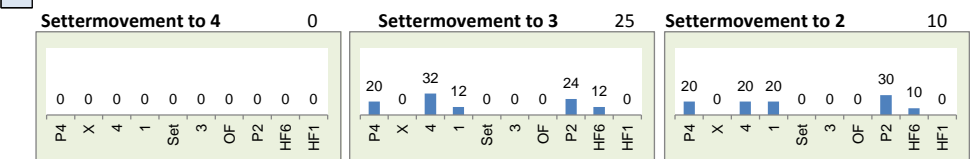
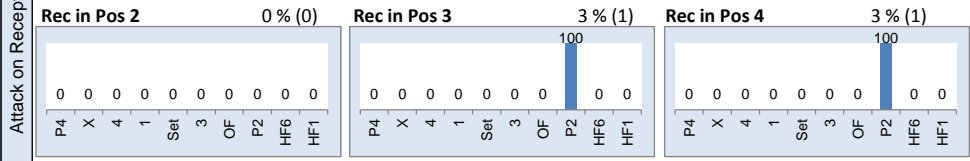
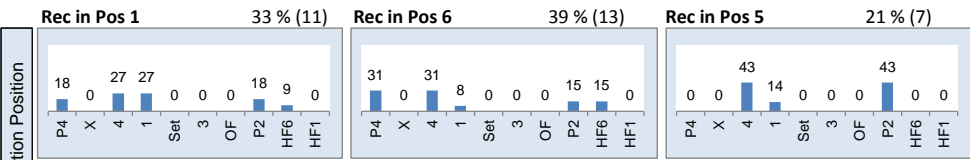
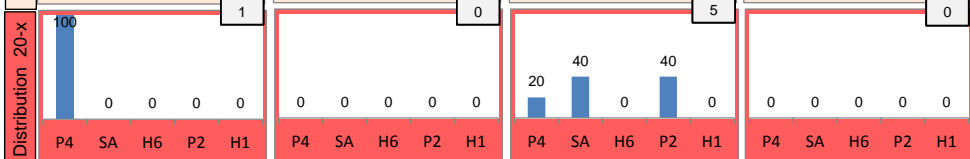
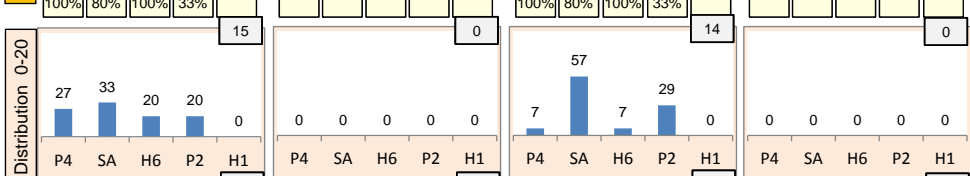
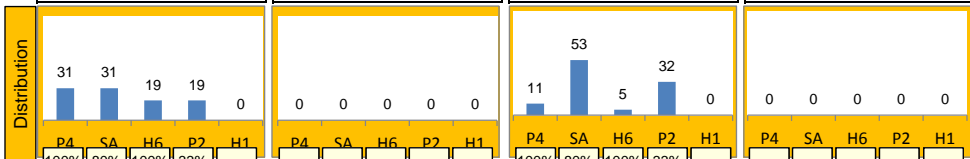
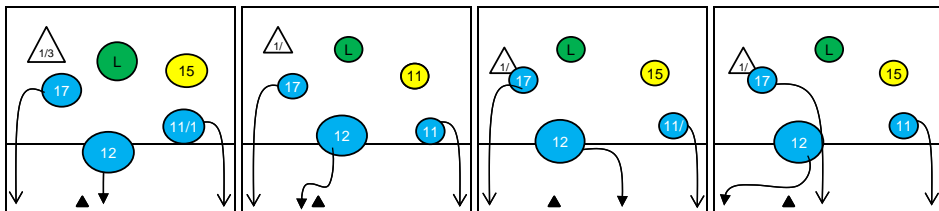
	K1 after R#+								K1 after R-!								Freeball-Attacks							
	Σ	in %	=	/	#	=/%	#%	eff	Σ	in %	=	/	#	=/%	#%	eff	Σ	in %	=	/	#	=/%	#%	eff
<b>BULGARIA</b>	203		12	21	127	16%	63%	46%	170		9	14	75	14%	44%	31%	81		5	9	35	17%	43%	26%
11 Nikolov	46	23%	3	5	24	17%	52%	35%	53	31%	3	5	28	15%	53%	38%	32	200%	2	4	16	19%	50%	31%
15 Aleksiev	35	17%	1	5	24	17%	69%	51%	34	20%	1	5	11	18%	32%	15%	17	283%	2	3	6	29%	35%	6%
17 Penchev N.	31	15%	1	4	23	16%	74%	58%	24	14%	2	0	8	8%	33%	25%	15	167%	0	1	9	7%	60%	53%
10 Uchikov	18	9%	1	3	13	22%	72%	50%	13	8%	1	1	7	15%	54%	38%	6	600%	0	0	1	0%	17%	17%
7 Gradinarov	7	3%	1	1	4	29%	57%	29%	15	9%	1	1	6	13%	40%	27%	5	0	0	1	0	20%	0%	-20%
12 Yosifov	25	12%	2	2	13	16%	52%	36%	12	7%	0	0	8	0%	67%	67%	1	0	0	0	0	0%	0%	0%
14 Todorov	22	11%	0	1	16	5%	73%	68%	4	2%	0	0	3	0%	75%	75%	2	200%	1	0	1	50%	50%	0%
18 Nikolov	14	7%	2	0	9	14%	64%	50%	8	5%	0	1	3	13%	38%	25%	3	150%	0	0	2	0%	67%	67%
2 Petkov	5	2%	1	0	1	20%	20%	0%	7	4%	1	1	1	29%	14%	-14%	0							
1 Bratov G.	0								0								0							
3 Zhekov	0								0								0							
13 Salparov	0								0								0							
16 Ivanov	0								0								0							
23 Agontsev	0								0								0							



# Rotation 1

# BULGARIA

Base K1 46 % (16) Base K2 0 % (0) Base K7 54 % (19) Base KD 0 % (0)



# Distribution

K1 after all R 64 55% 66% K1 after R#+ 35 74% 80% K2 Transition 37 14% 27%

	0	-	5	8%	0	-	0	-	1	3%	2	5%	0	-
	-	-	100%	100%	-	-	-	-	0%	0%	-50%	0%	-	-
	19	30%	22	34%	18	28%	9	26%	15	43%	7	20%	17	46%
	16%	42%	77%	77%	56%	67%	33%	56%	80%	80%	100%	100%	41%	41%

Reception	Σ	Σ %	=/	=/ %	+	+ %	#	# %	+ # %	Eff
BULGARIA	67	100%	4	6%	21	31%	12	18%	49%	43%
13 Salparov	24	36%	1	4%	9	38%	5	21%	58%	54%
17 Penchev N.	15	22%	0	0%	5	33%	4	27%	60%	60%
15 Aleksiev	11	16%	0	0%	4	36%	2	18%	55%	55%
7 Gradinarov	10	15%	2	20%	2	20%	0	0%	20%	0%
16 Ivanov	4	6%	1	25%	1	25%	1	25%	50%	25%
1 Bratov G.	1	1%	0	0%	0	0%	0	0%	0%	0%

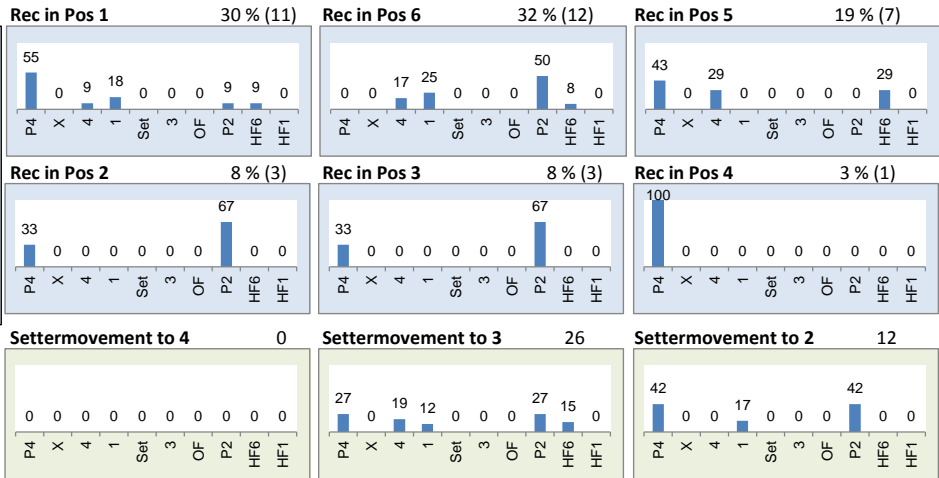
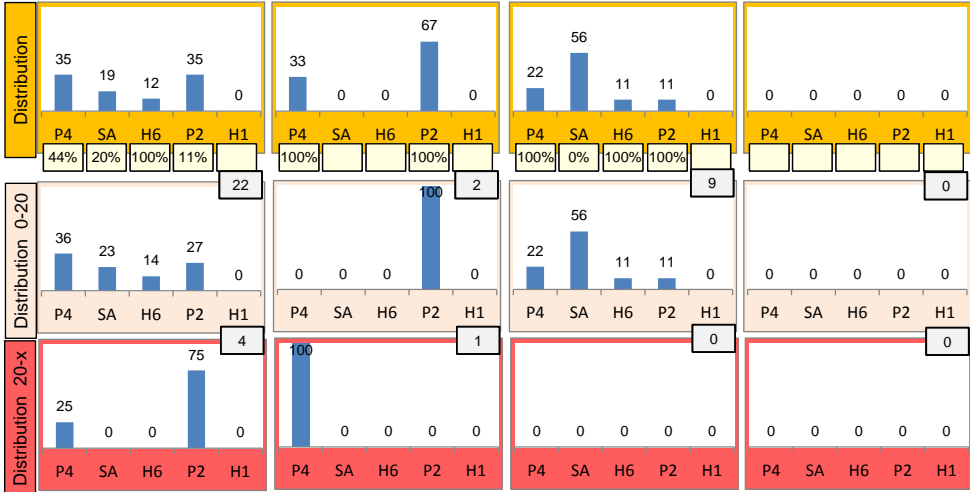
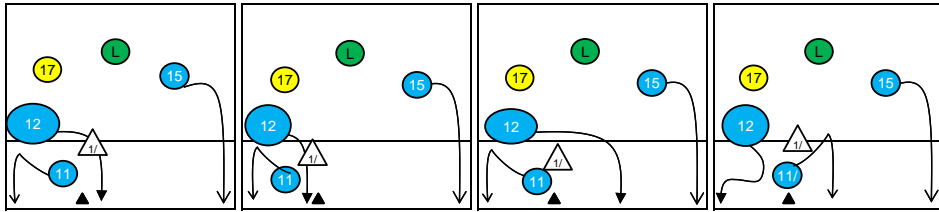
K1-Attacks after R#+	Σ	Σ %	=	= %	#	# %	Eff
BULGARIA	35	100%	1	3%	28	80%	74%
17 Penchev N.	10	29%	1	10%	6	60%	40%
14 Todorov	9	26%	0	0%	9	100%	100%
18 Nikolov	5	14%	0	0%	3	60%	60%
11 Nikolov	4	11%	0	0%	4	100%	100%
10 Uchikov	3	9%	0	0%	3	100%	100%
15 Aleksiev	2	6%	0	0%	2	100%	100%
2 Petkov	1	3%	0	0%	1	100%	100%

K2-Attacks - Transition	Σ	Σ %	=	= %	#	# %	Eff
BULGARIA	37	100%	1	3%	10	27%	14%
11 Nikolov	19	51%	0	0%	8	42%	26%
17 Penchev N.	7	19%	0	0%	2	29%	14%
7 Gradinarov	6	16%	0	0%	0	0%	0%
15 Aleksiev	3	8%	1	33%	0	0%	-33%
10 Uchikov	1	3%	0	0%	0	0%	0%
14 Todorov	1	3%	0	0%	0	0%	0%
1 Bratov G.	0	0%	0	-	0	-	-

# Rotation 6

# BULGARIA

Base K1 68 % (26) Base K2 8 % (3) Base K7 24 % (9) Base KD 0 % (0)



# Distribution

K1 after all R 67 39% 52% K1 after R#+ 40 42% 58% K2 Transition 32 19% 38%

0	-	5	7%	0	-	0	-	4	10%	0	-	0	-	2	6%	0	-
-	-	80%	80%	-	-	-	-	100%	100%	-	-	-	-	100%	100%	-	-
25	37%	12	18%	25	37%	13	33%	10	25%	13	33%	7	22%	2	6%	21	66%
44%	56%	17%	42%	36%	48%	38%	54%	10%	40%	54%	62%	-29%	14%	50%	50%	24%	38%

Reception	Σ	Σ %	=	= %	+	+ %	#	# %	+ # %	Eff
BULGARIA	76	100%	9	12%	14	18%	24	32%	50%	38%
13 Salparov	26	34%	5	19%	2	8%	11	42%	50%	31%
17 Penchev N.	25	33%	2	8%	4	16%	11	44%	60%	52%
15 Aleksiev	11	14%	2	18%	4	36%	1	9%	45%	27%
7 Gradinarov	6	8%	0	0%	0	0%	0	0%	0%	0%
16 Ivanov	5	7%	0	0%	2	40%	1	20%	60%	60%
2 Petkov	1	1%	0	0%	1	100%	0	0%	100%	100%

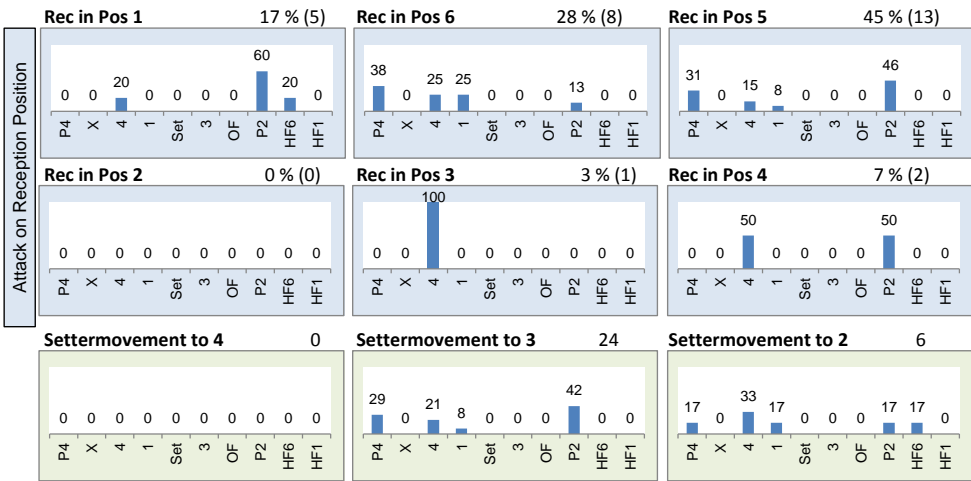
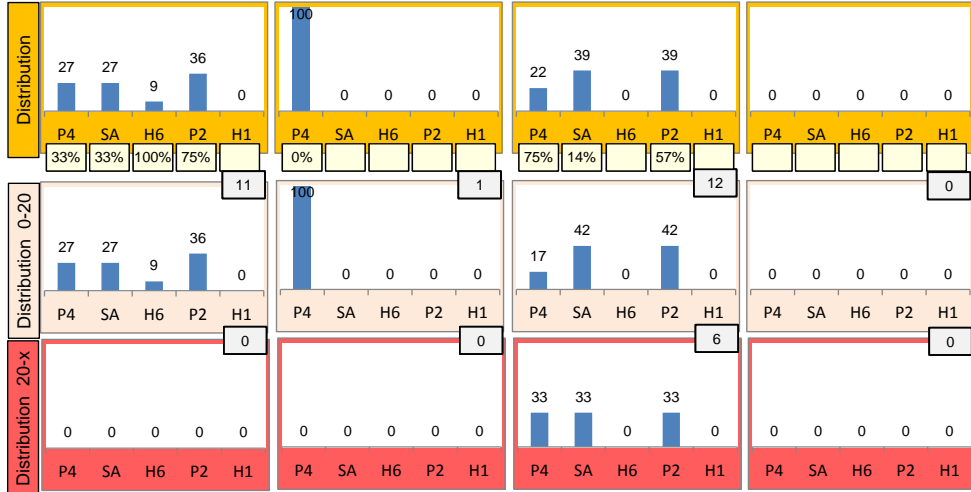
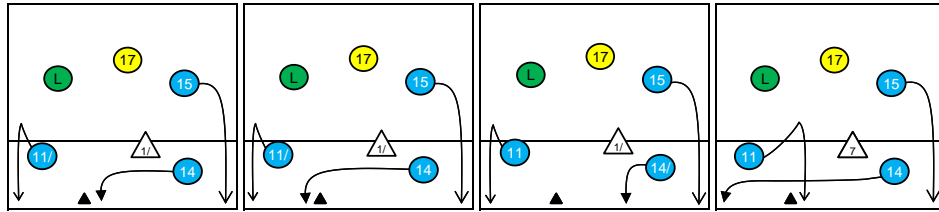
K1-Attacks after R#+	Σ	Σ %	=	= %	#	# %	Eff
BULGARIA	40	100%	3	8%	23	58%	42%
11 Nikolov	10	25%	1	10%	4	40%	20%
15 Aleksiev	10	25%	0	0%	7	70%	60%
14 Todorov	4	10%	0	0%	2	50%	50%
10 Uchikov	3	8%	0	0%	3	100%	100%
12 Yosifov	3	8%	0	0%	1	33%	0%
17 Penchev N.	3	8%	0	0%	3	100%	100%
18 Nikolov	3	8%	2	67%	1	33%	-33%

K2-Attacks - Transitor	Σ	Σ %	=	= %	#	# %	Eff
BULGARIA	32	100%	2	6%	12	38%	19%
15 Aleksiev	15	47%	1	7%	5	33%	20%
7 Gradinarov	6	19%	0	0%	4	67%	67%
11 Nikolov	4	13%	0	0%	1	25%	-25%
10 Uchikov	3	9%	1	33%	0	0%	-33%
17 Penchev N.	2	6%	0	0%	1	50%	0%
18 Nikolov	2	6%	0	0%	1	50%	50%
1 Bratov G.	0	0%	0	-	0	-	-

# Rotation 5

# BULGARIA

Base K1 37 % (11) Base K2 3 % (1) Base K7 60 % (18) Base KD 0 % (0)



# Distribution

K1 after all R 63 43% 57% K1 after R#+ 30 47% 63% K2 Transition 31 13% 35%

	0	-	3	5%	0	-	0	3%	0	-	0	-	1	3%	0	-
	-	-	67%	67%	-	-	-	-	100%	100%	-	-	-	-	100%	100%
	22	35%	16	25%	22	35%	11	37%	10	33%	8	27%	14	45%	1	3%
	55%	64%	38%	63%	32%	45%	64%	73%	20%	50%	50%	63%	21%	36%	100%	100%

Reception	Σ	Σ %	=/	=/ %	+	+ %	#	# %	+# %	Eff
BULGARIA	81	100%	7	9%	17	21%	12	15%	36%	27%
17 Penchev N.	36	44%	2	6%	10	28%	3	8%	36%	31%
13 Salparov	16	20%	2	13%	3	19%	4	25%	44%	31%
15 Aleksiev	14	17%	2	14%	3	21%	2	14%	36%	21%
7 Gradinarov	7	9%	0	0%	0	0%	1	14%	14%	14%
2 Petkov	5	6%	1	20%	0	0%	0	0%	0%	-20%
12 Yosifov	2	2%	0	0%	0	0%	2	100%	100%	100%

K1-Attacks after R#+	Σ	Σ %	=	= %	#	# %	Eff
BULGARIA	30	100%	3	10%	19	63%	47%
11 Nikolov	8	27%	1	13%	5	63%	50%
12 Yosifov	8	27%	2	25%	4	50%	25%
15 Aleksiev	7	23%	0	0%	5	71%	57%
10 Uchikov	3	10%	0	0%	3	100%	100%
14 Todorov	2	7%	0	0%	1	50%	0%
2 Petkov	1	3%	0	0%	0	0%	0%
17 Penchev N.	1	3%	0	0%	1	100%	100%

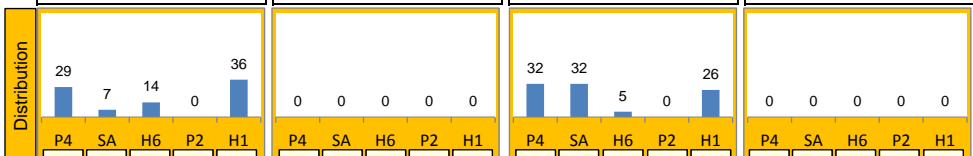
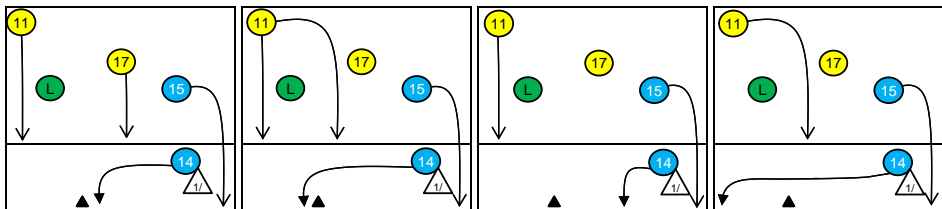
K2-Attacks - Transition	Σ	Σ %	=	= %	#	# %	Eff
BULGARIA	31	100%	2	6%	11	35%	13%
11 Nikolov	11	35%	1	9%	5	45%	27%
15 Aleksiev	7	23%	0	0%	2	29%	0%
7 Gradinarov	6	19%	0	0%	1	17%	-17%
10 Uchikov	3	10%	0	0%	0	0%	0%
2 Petkov	2	6%	1	50%	1	50%	0%
17 Penchev N.	1	3%	0	0%	1	100%	100%
18 Nikolov	1	3%	0	0%	1	100%	100%



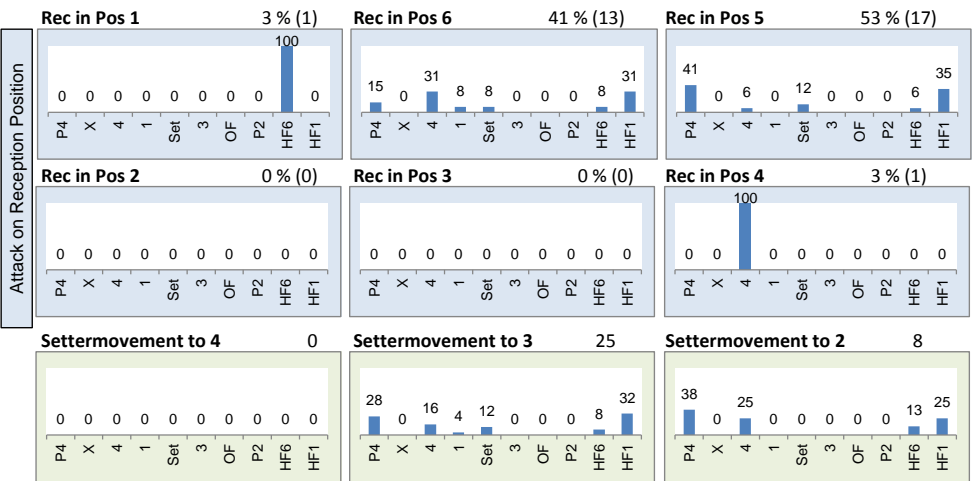
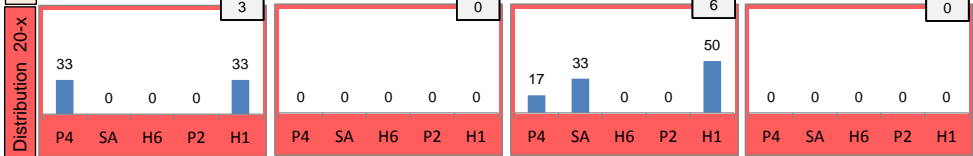
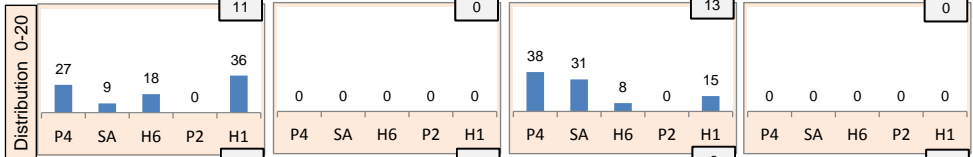
# Rotation 4

# BULGARIA

Base K1 42% (14) Base K2 0% (0) Base K7 58% (19) Base KD 0% (0)



50% 0% 0% 40% 67% 83% 100% 20%



# Distribution

K1 after all R 59 34% 53% K1 after R#+ 30 50% 70% K2 Transition 49 31% 45%

20	34%	3	5%	0	-	10	33%	3	10%	0	-	21	43%	5	10%	0	-
20%	45%	33%	67%	-	-	30%	60%	33%	67%	-	-	43%	52%	0%	40%	-	-
0	-	8	14%	28	47%	0	-	7	23%	10	33%	1	2%	1	2%	21	43%
-	-	75%	75%	32%	50%	-	-	71%	71%	60%	80%	100%	100%	0%	0%	24%	38%

Reception	Σ	Σ %	=	= %	+	+ %	#	# %	+ # %	Eff
BULGARIA	79	100%	8	10%	19	24%	15	19%	43%	33%
17 Penchev N.	43	54%	5	12%	11	26%	7	16%	42%	30%
15 Aleksiev	20	25%	1	5%	5	25%	6	30%	55%	50%
7 Gradinarov	7	9%	1	14%	1	14%	1	14%	29%	14%
13 Salparov	7	9%	0	0%	2	29%	1	14%	43%	43%
2 Petkov	1	1%	1	100%	0	0%	0	0%	0%	-100%
16 Ivanov	1	1%	0	0%	0	0%	0	0%	0%	0%

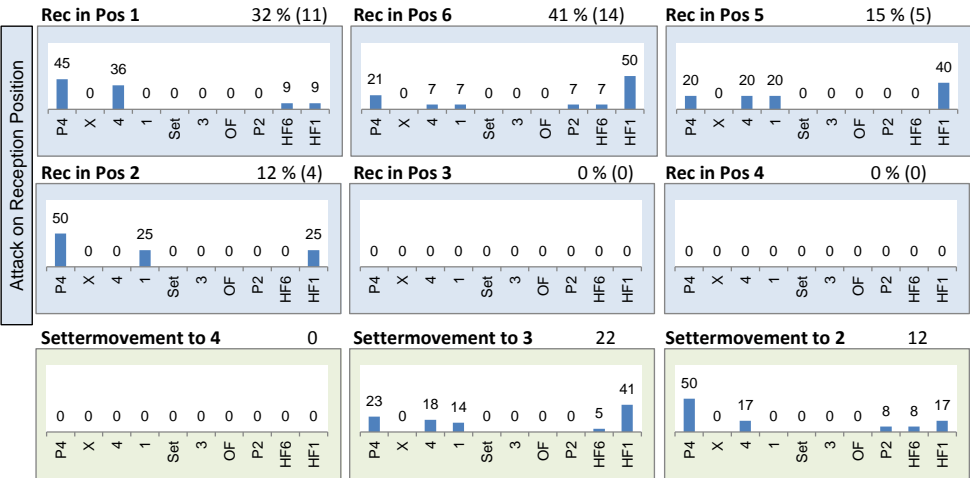
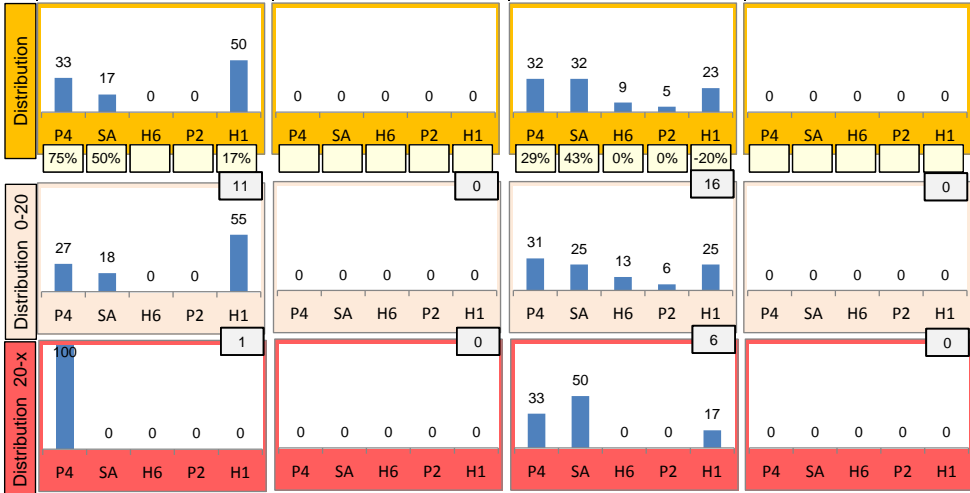
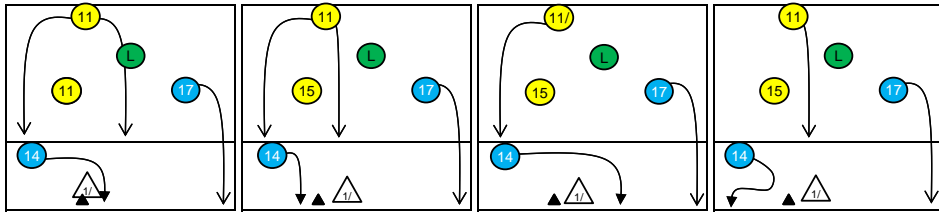
K1-Attacks after R#+	Σ	Σ %	=	= %	#	# %	Eff
BULGARIA	30	100%	1	3%	21	70%	50%
15 Aleksiev	8	27%	0	0%	7	88%	75%
11 Nikolov	6	20%	0	0%	4	67%	50%
10 Uchikov	4	13%	0	0%	2	50%	0%
12 Yosifov	4	13%	0	0%	3	75%	75%
14 Todorov	3	10%	0	0%	2	67%	67%
17 Penchev N.	3	10%	0	0%	2	67%	33%
2 Petkov	1	3%	1	100%	0	0%	-100%

K2-Attacks - Transitor	Σ	Σ %	=	= %	#	# %	Eff
BULGARIA	49	100%	2	4%	22	45%	31%
15 Aleksiev	19	39%	2	11%	7	37%	21%
11 Nikolov	13	27%	0	0%	6	46%	38%
10 Uchikov	9	18%	0	0%	6	67%	56%
17 Penchev N.	5	10%	0	0%	2	40%	0%
2 Petkov	1	2%	0	0%	1	100%	100%
7 Gradinarov	1	2%	0	0%	0	0%	0%
12 Yosifov	1	2%	0	0%	0	0%	0%

# Rotation 3

# BULGARIA

Base K1 35% (12) Base K2 0% (0) Base K7 65% (22) Base KD 0% (0)



# Distribution

K1 after all R 53 28% 47% K1 after R#+ 34 26% 50% K2 Transition 22 36% 50%

16	30%	4	8%	0	-	11	32%	2	6%	0	-	11	50%	0	-	0	-
12%	44%	0%	25%	-	-	0%	36%	0%	50%	-	-	64%	73%	-	-	-	-
1	2%	13	25%	19	36%	1	3%	9	26%	11	32%	1	5%	0	-	10	45%
0%	0%	46%	54%	37%	53%	0%	0%	44%	56%	45%	64%	-100%	0%	-	-	20%	30%

Reception	Σ	Σ %	=/	=/ %	+	+ %	#	# %	+ # %	Eff
BULGARIA	64	100%	5	8%	18	28%	16	25%	53%	45%
13 Salparov	30	47%	3	10%	10	33%	7	23%	57%	47%
15 Aleksiev	12	19%	0	0%	5	42%	3	25%	67%	67%
17 Penchev N.	12	19%	0	0%	2	17%	3	25%	42%	42%
16 Ivanov	6	9%	1	17%	1	17%	3	50%	67%	50%
2 Petkov	2	3%	0	0%	0	0%	0	0%	0%	0%
7 Gradinarov	1	2%	1	100%	0	0%	0	0%	0%	-100%

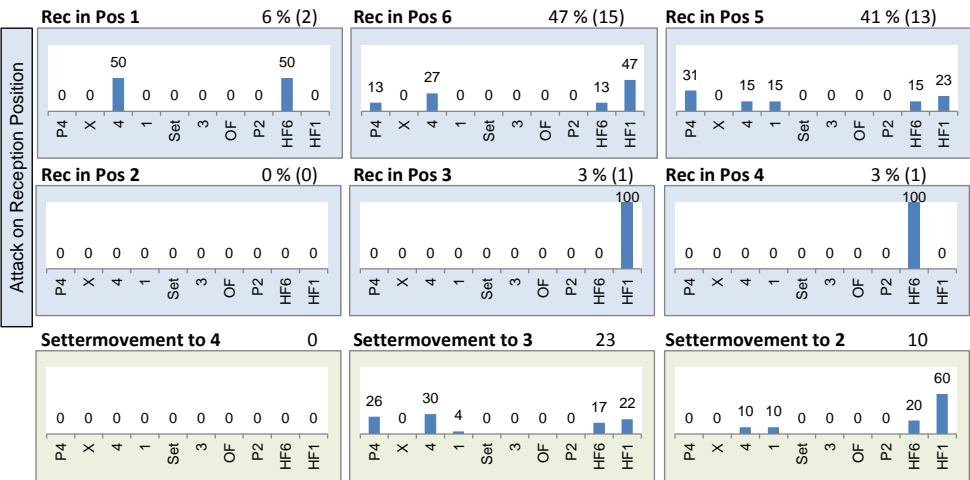
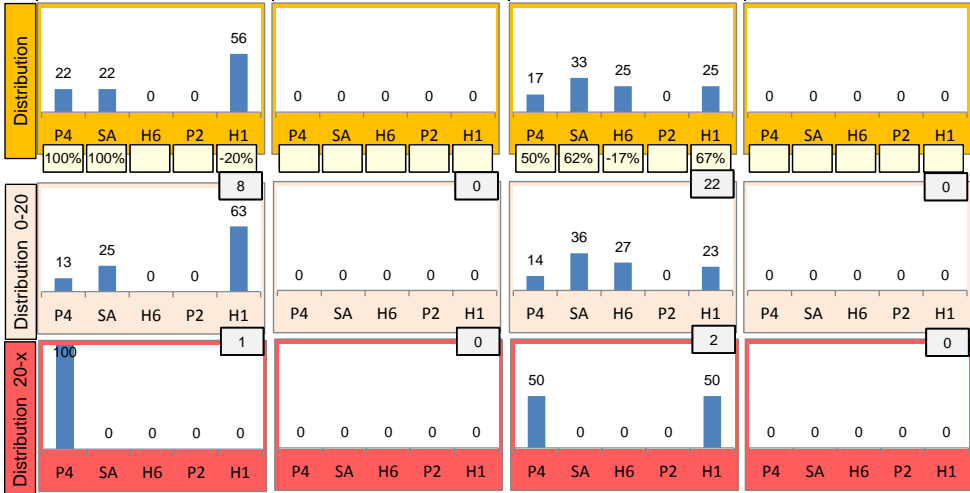
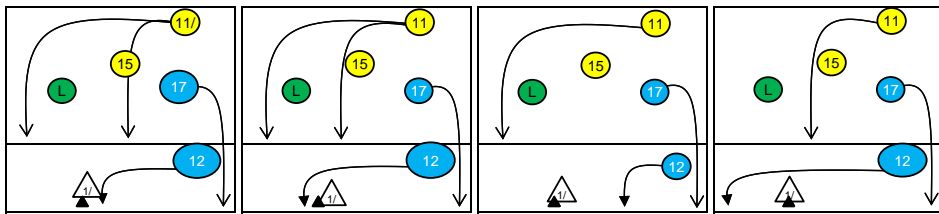
K1-Attacks after R#+	Σ	Σ %	=	= %	#	# %	Eff
BULGARIA	34	100%	1	3%	17	50%	26%
11 Nikolov	9	26%	1	11%	3	33%	0%
17 Penchev N.	9	26%	0	0%	6	67%	44%
12 Yosifov	8	24%	0	0%	5	63%	50%
10 Uchikov	3	9%	0	0%	1	33%	0%
7 Gradinarov	2	6%	0	0%	1	50%	50%
15 Aleksiev	2	6%	0	0%	1	50%	0%
14 Todorov	1	3%	0	0%	0	0%	0%

K2-Attacks - Transition	Σ	Σ %	=	= %	#	# %	Eff
BULGARIA	22	100%	2	9%	11	50%	36%
17 Penchev N.	10	45%	0	0%	3	30%	20%
11 Nikolov	9	41%	2	22%	7	78%	56%
10 Uchikov	3	14%	0	0%	1	33%	33%
1 Bratov G.	0	0%	0	-	0	-	-
2 Petkov	0	0%	0	-	0	-	-
3 Zhekov	0	0%	0	-	0	-	-
7 Gradinarov	0	0%	0	-	0	-	-

# Rotation 2

# BULGARIA

Base K1 27% (9) Base K2 0% (0) Base K7 73% (24) Base KD 0% (0)



# Distribution

K1 after all R 58 34% 50% K1 after R#+ 34 38% 56% K2 Transition 39 44% 54%

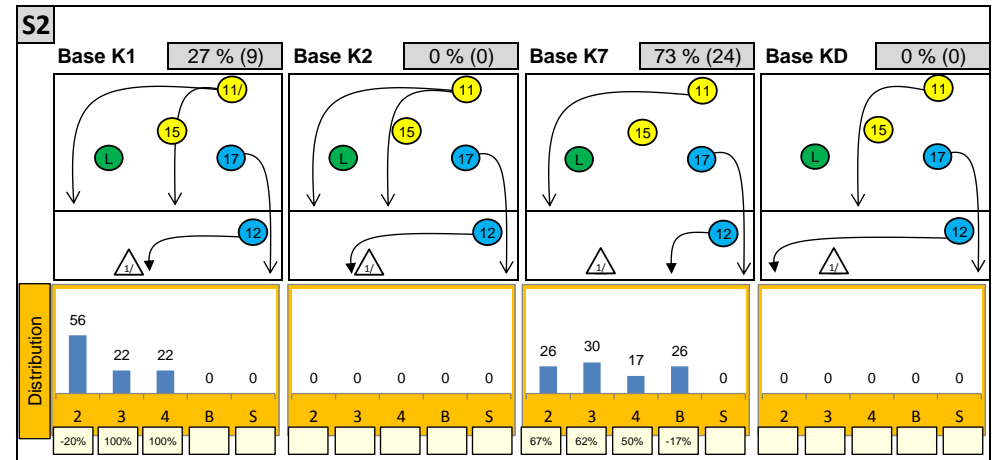
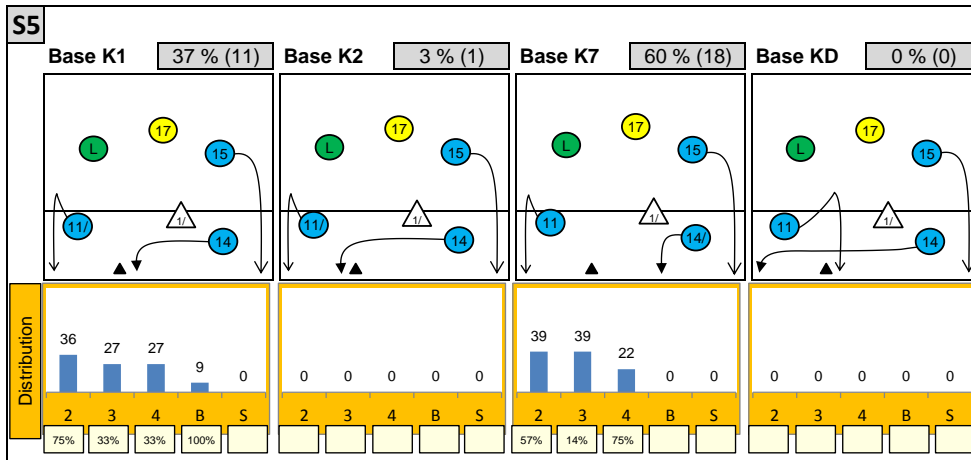
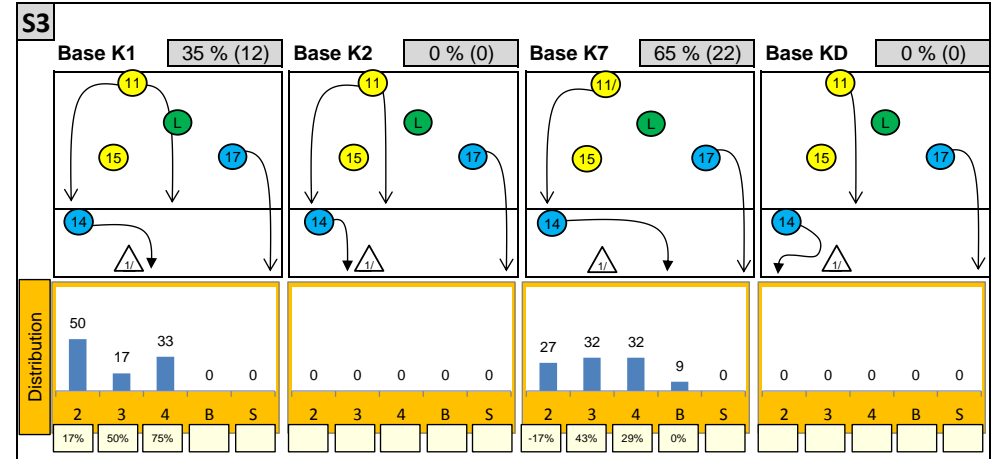
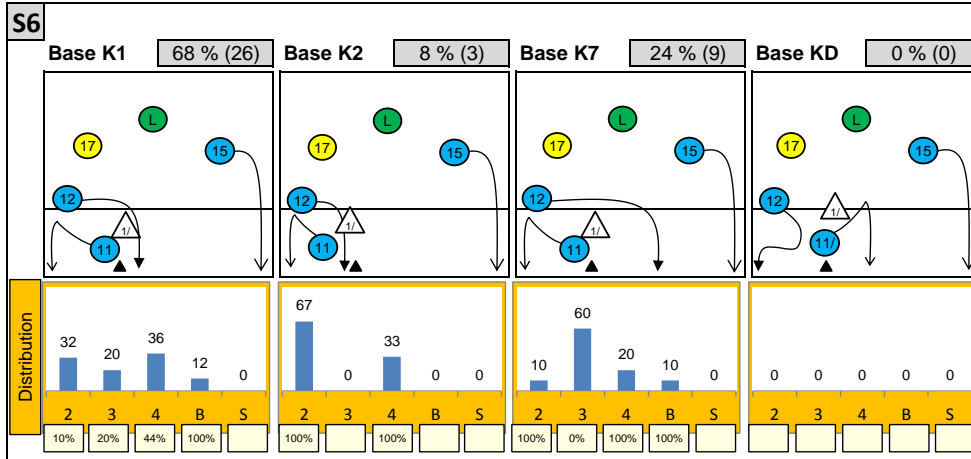
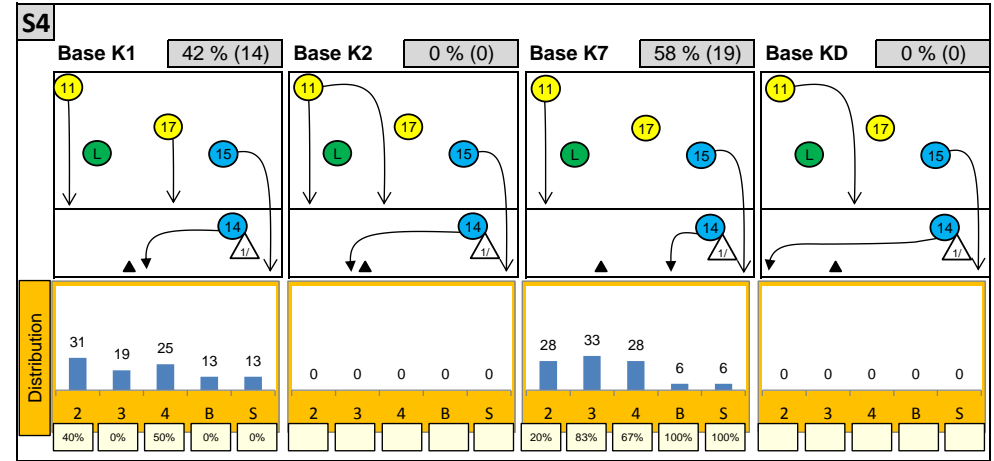
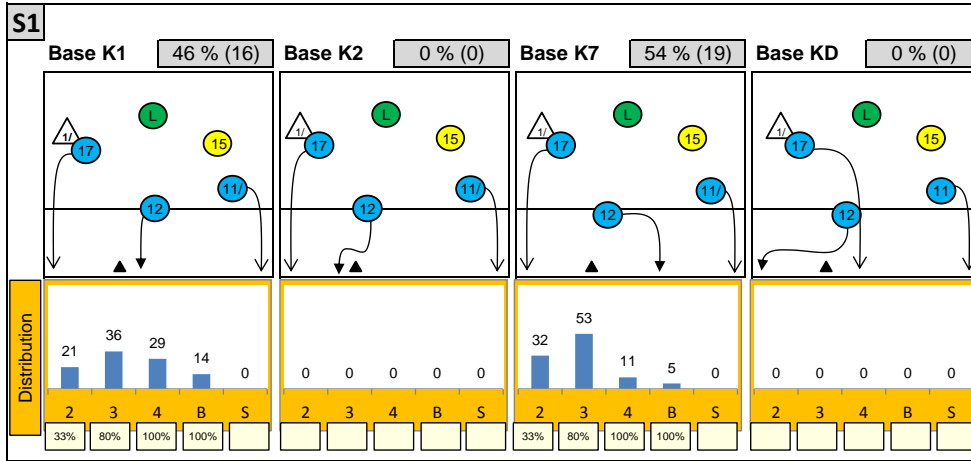
Category	Count	Percentage	Count	Percentage	Count	Percentage
25	43%	6	10%	0	-	
32%	52%	-17%	33%	-	-	
0	-	13	22%	14	24%	
-	-	54%	54%	43%	50%	

Reception	Σ	Σ %	=	= %	+	+ %	#	# %	+ # %	Eff
BULGARIA	65	100%	3	5%	18	28%	14	22%	49%	45%
17 Penchev N.	22	34%	1	5%	6	27%	8	36%	64%	59%
15 Aleksiev	17	26%	0	0%	4	24%	0	0%	24%	24%
13 Salparov	12	18%	1	8%	5	42%	2	17%	58%	50%
7 Gradinarov	5	8%	1	20%	1	20%	2	40%	60%	40%
16 Ivanov	4	6%	0	0%	2	50%	1	25%	75%	75%
2 Petkov	2	3%	0	0%	0	0%	0	0%	0%	0%

K1-Attacks after R#+	Σ	Σ %	=	= %	#	# %	Eff
BULGARIA	34	100%	3	9%	19	56%	38%
11 Nikolov	9	26%	0	0%	4	44%	33%
15 Aleksiev	6	18%	1	17%	2	33%	0%
18 Nikolov	6	18%	0	0%	5	83%	83%
17 Penchev N.	5	15%	0	0%	5	100%	100%
14 Todorov	3	9%	0	0%	2	67%	67%
7 Gradinarov	2	6%	1	50%	0	0%	-100%
10 Uchikov	2	6%	1	50%	1	50%	0%

K2-Attacks - Transitor	Σ	Σ %	=	= %	#	# %	Eff
BULGARIA	39	100%	3	8%	21	54%	44%
11 Nikolov	16	41%	1	6%	9	56%	44%
17 Penchev N.	13	33%	0	0%	8	62%	62%
10 Uchikov	3	8%	0	0%	1	33%	33%
14 Todorov	2	5%	1	50%	1	50%	0%
15 Aleksiev	2	5%	0	0%	1	50%	50%
18 Nikolov	2	5%	1	50%	1	50%	0%
7 Gradinarov	1	3%	0	0%	0	0%	0%

# Attackdistribution depending on Settercalls - BULGARIA

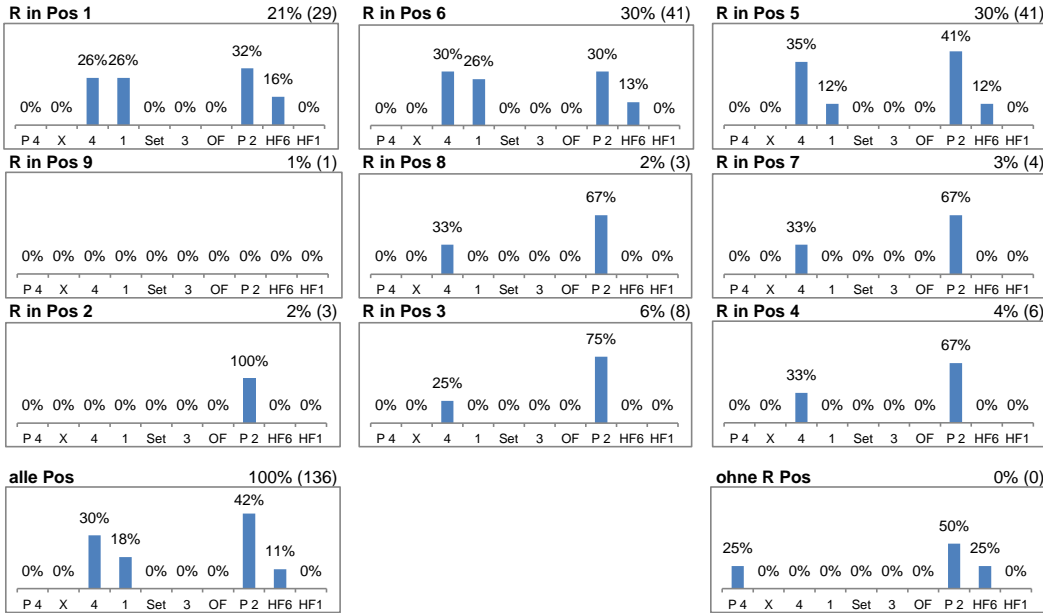


2: Attack of Opposite    3: Attack of Middleblocker    4: Attack of Outside    B: Attack of Backrow

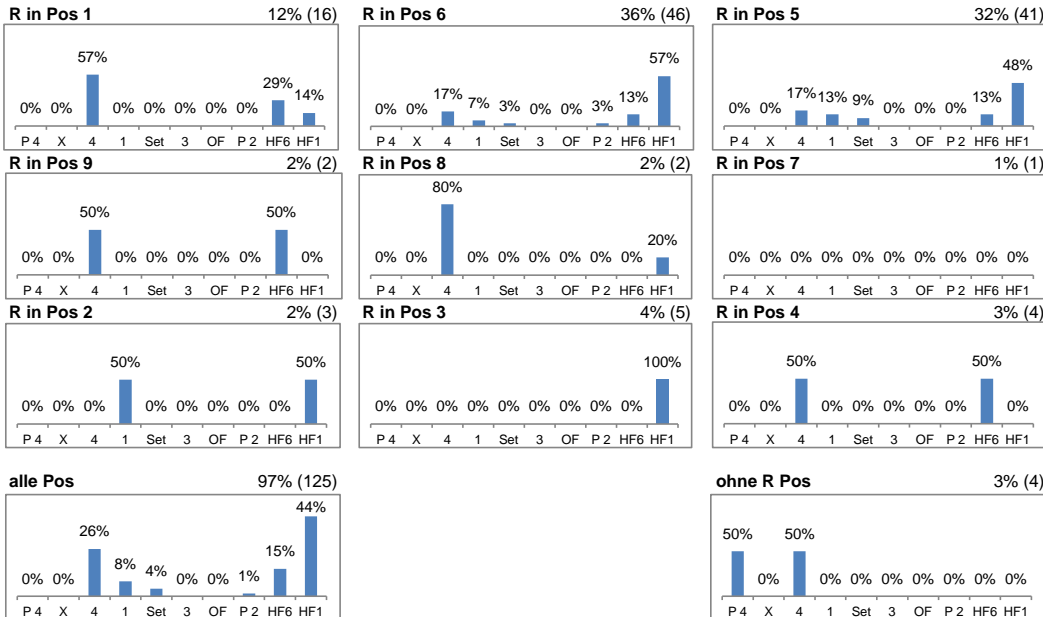
S: Attack of Setter    xx%: Efficiency of Attacks (-100% to +100%)

# Attacks depending on Reception Position - BULGARIA

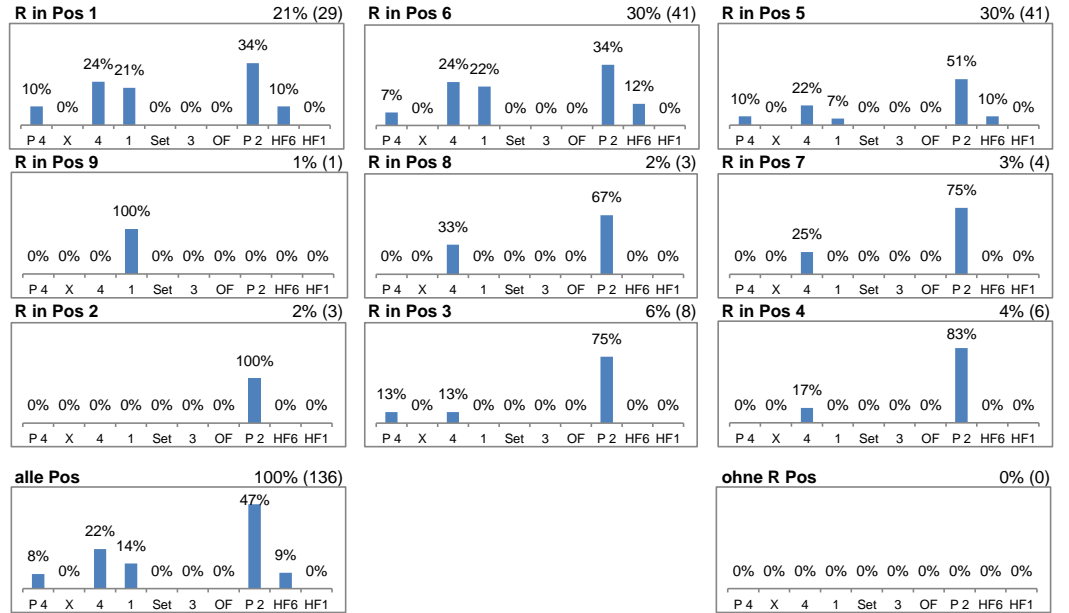
## Setter back (S1, S6, S5) - R#+



## Setter front (S4, S3, S2) - R#+



## Setter back (S1, S6, S5) - all Receptions



## Setter front (S4, S3, S2) - all Receptions

