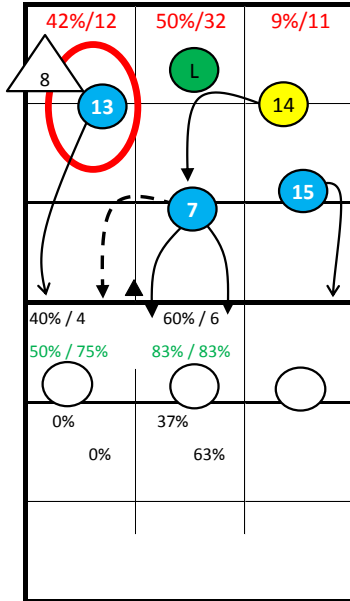


Roster

1 Veselý	MB
3 Mach	MB
4 Pfeffer	Lib
6 Linz	Out
7 Holubec	MB
8 Habr	Set
11 Krystof	Lib
13 Baránek	Out
14 Bartos	Out
15 Štokr	Opp
17 Konečný	Opp
19 Michalek	Out
24 Janouch	Set

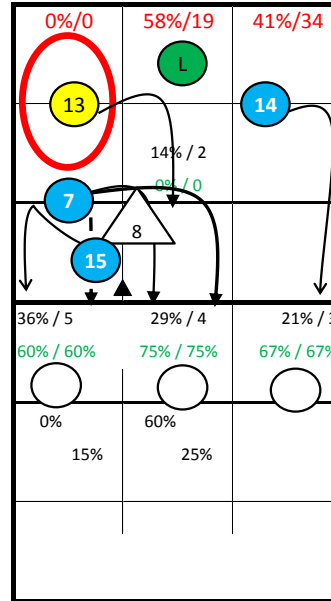
Czech Republic 2015 -

24: Jumpserve at Position 1
8: Jumpserve at Position 1



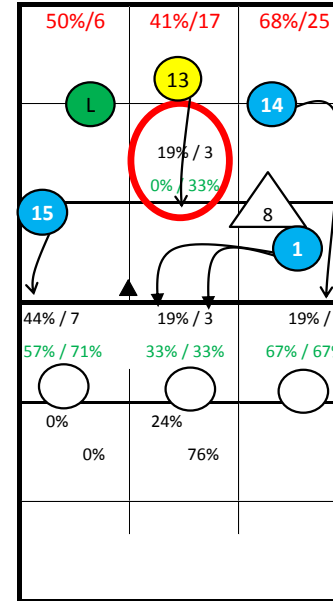
S1

19: Jumpfloat at Position 5
13: Jumpserve at Position 1



S6

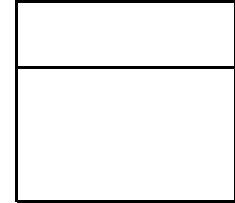
3: Jumpfloat at Position 1
7: Jumpfloat at Position 1



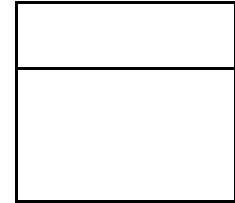
S5



S1

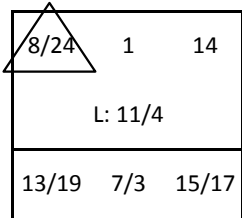


S6



S5

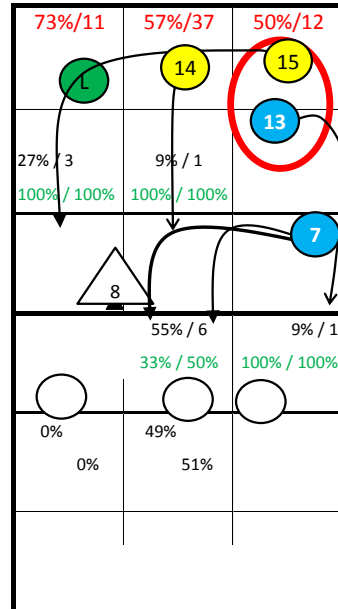
Starting Lineup:



Rotation:

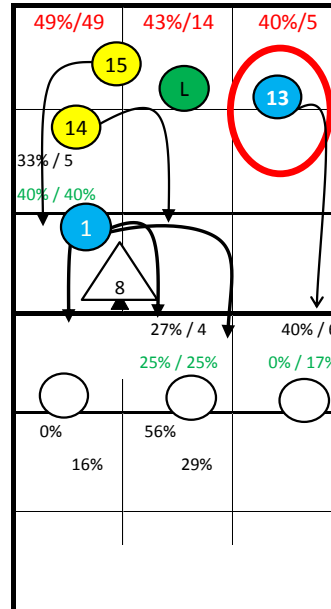
Ser: S6
Rec: S6

1: Jumpfloat at Position 5



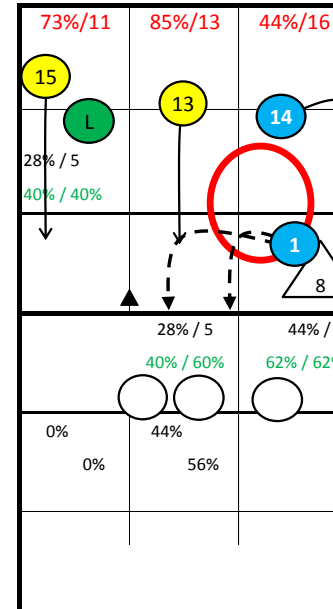
S2

14: Jumpfloat at Position 1

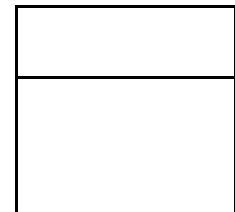


S3

17: Jumpserve at Position 6
15: Jumpserve at Position 6



S4



S4

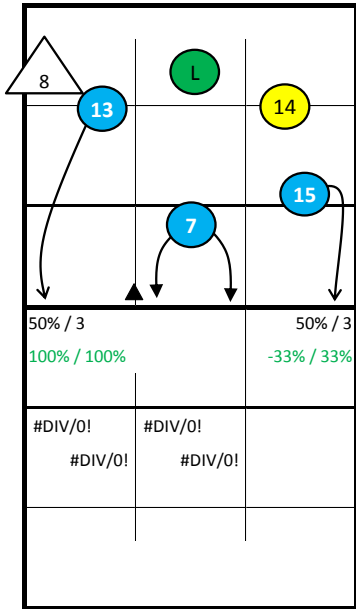


S3

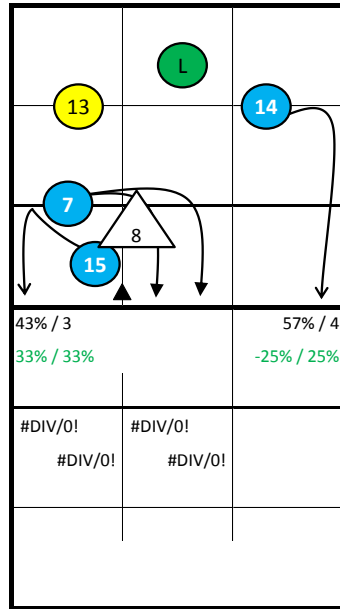


S2

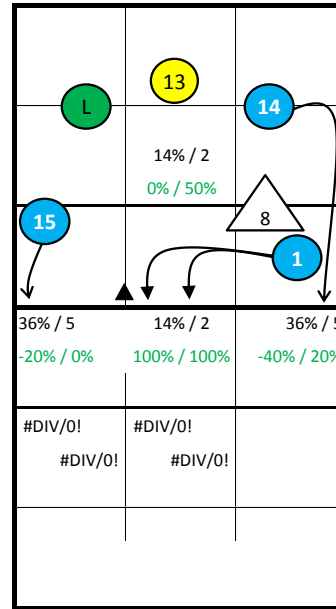
Czech Republic 2015 -



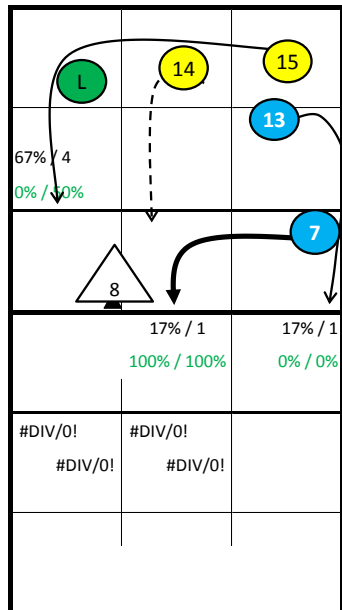
S1



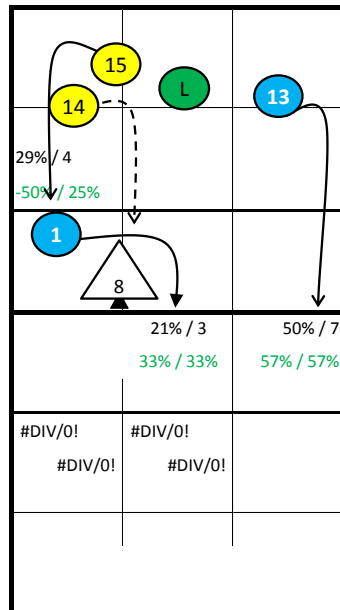
S6



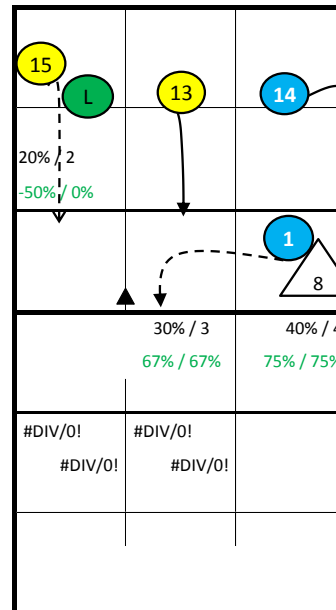
S5



S2



S3



S4

Czech Republic 2015 - all Statistics

pId Set	Points					Serve								Reception										Attack											
	pts	P/s	easy=	all=	W-L	Σ	=	-	+	#	=%	#%	eff%	Σ	in %	=	/	-	+	#	=/%	+#%	#%	eff%	Σ	in %	=	/	!	+	#	=/%	#%	eff%	
Czech Republic 2015	21	326	15,5	157	407	-81	437	78	194	152	13	18%	3%	20%	422		27	3	153	122	117	7%	57%	28%	50%	531		54	39	27	103	266	18%	50%	33%
1 Veselý	21	32	1,5	8	39	-7	65	3	37	25	0	5%	0%	34%	5	1%	1	0	2	1	1	20%	40%	20%	20%	48	9%	2	1	2	19	18	6%	38%	31%
3 Mach	15	13	0,9	7	23	-10	34	4	22	8	0	12%	0%	12%	1	0%	0	0	1	0	0	0%	0%	0%	0%	19	4%	1	2	0	3	10	16%	53%	37%
4 Pfeffer	3	0			4	-4	0							16	4%	0	0	7	7	2	0%	56%	12%	56%	0										
6 Linz	0	0				0								0											0										
7 Holubec	14	32	2,3	4	23	9	38	3	19	14	2	8%	5%	34%	5	1%	1	0	1	1	2	20%	60%	40%	40%	41	8%	0	4	5	6	24	10%	59%	49%
8 Habr	12	12	1,0	10	16	-4	34	6	14	10	4	18%	12%	24%	0										5	1%	1	1	0	1	1	40%	20%	-20%	
11 Krystof	18	0			30	-30	0							93	22%	5	1	29	26	32	6%	62%	34%	56%	0										
13 Baránek	20	56	2,8	40	73	-17	69	25	19	23	2	36%	3%	0%	59	14%	3	1	20	16	19	7%	59%	32%	53%	96	18%	10	12	4	13	51	23%	53%	30%
14 Bartos	20	39	2,0	15	46	-7	63	4	29	29	1	6%	2%	41%	172	41%	12	1	62	50	47	8%	56%	27%	49%	73	14%	9	5	5	13	33	19%	45%	26%
15 Štokr	15	66	4,4	25	47	19	29	12	5	10	2	41%	7%	0%	0										105	20%	11	7	6	15	61	17%	58%	41%	
17 Konečný	16	52	3,3	27	48	4	40	14	13	11	2	35%	5%	-3%	1	0%	0	0	1	0	0	0%	0%	0%	0%	97	18%	10	6	0	25	48	16%	49%	33%
19 Michalek	12	18	1,5	12	30	-12	25	2	14	9	0	8%	0%	28%	70	17%	5	0	30	21	14	7%	50%	20%	43%	39	7%	8	0	4	8	16	21%	41%	21%
24 Janouch	16	6	0,4	9	28	-22	40	5	22	13	0	13%	0%	20%	0										8	2%	2	1	1	0	4	38%	50%	12%	

	Block						Defense						Freeball					Set		
	Σ	=	+	#	#%	eff%	Σ	=	/-!	+#	+#%	eff%	Σ	err	bad	god	eff%	Σ	=	eff%
Czech Republic 2015	254	117	21	47	19%	-10%	316	80	147	89	28%	3%	26	4	22	0	-15%	472	8	57%
1 Veselý	62	25	6	14	23%	6%	25	6	12	7	28%	4%	0					7	1	-14%
3 Mach	24	10	2	3	13%	-8%	13	6	4	3	23%	-23%	1	0	1	0	0%	1	0	0%
4 Pfeffer	0						13	4	4	5	38%	8%	1	0	1	0	0%	1	0	0%
6 Linz	0						0						0					0		
7 Holubec	29	12	5	6	21%	14%	16	2	9	5	31%	19%	1	0	1	0	0%	6	1	-17%
8 Habr	15	6	0	7	47%	20%	17	1	12	4	24%	18%	1	1	0	0	-100%	160	0	66%
11 Krystof	0						71	25	24	22	31%	-4%	3	0	3	0	0%	28	0	0%
13 Baránek	26	17	0	3	12%	-50%	28	4	14	10	36%	21%	7	2	5	0	-29%	7	0	0%
14 Bartos	26	10	2	5	19%	-12%	35	6	17	12	34%	17%	1	0	1	0	0%	3	0	0%
15 Štokr	19	11	0	3	16%	-42%	21	6	8	7	33%	5%	3	0	3	0	0%	1	0	0%
17 Konečný	20	11	0	2	10%	-40%	24	4	13	7	29%	12%	4	1	3	0	-25%	8	2	-38%
19 Michalek	12	7	2	2	17%	-17%	24	6	13	5	21%	-4%	4	0	4	0	0%	6	2	-33%
24 Janouch	21	8	4	2	10%	0%	29	10	17	2	7%	-28%	0					244	2	70%

pld Set played Sets
 P/s Points per Set
 pts Points
 easy= easy errors (serve, net contact, ...)
 all= all errors
 W-L points - errors
 Σ sum of all events
 in % in percent of all team events

Czech Republic 2015 - Attack-Statistic

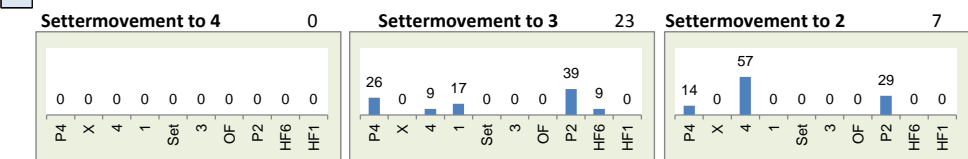
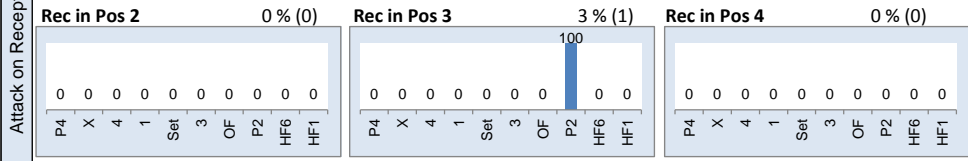
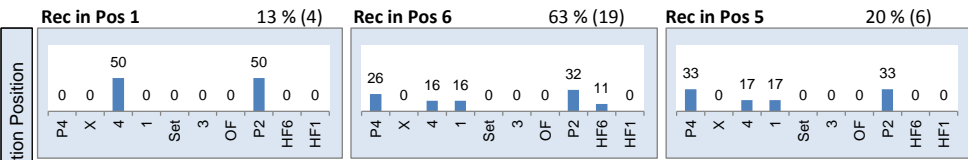
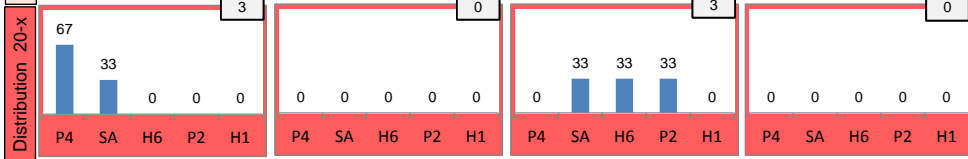
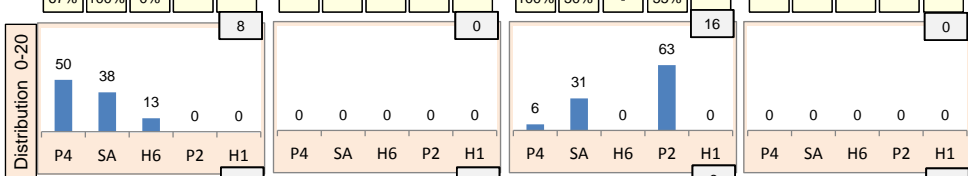
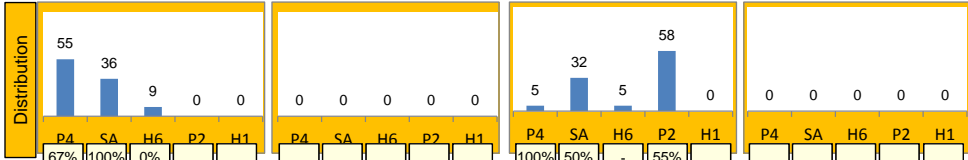
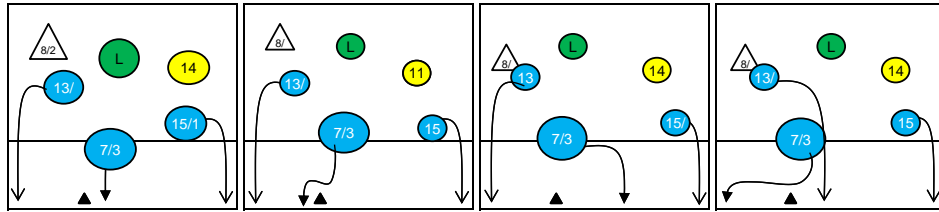
	K1 & K2 Attacks								K1 All Attacks								K2 Attacks								K1 aft R other Ply				K1 after own Rec			
	Σ	in %	=	/	#	=/%	#%	eff	Σ	in %	=	/	#	=/%	#%	eff	Σ	in %	=	/	#	=/%	#%	eff	sum	#	#%	eff	sum	#	#%	eff
Czech Republic 2015	501		50	38	249	18%	50%	32%	360		31	22	188	15%	52%	38%	141		19	16	61	25%	43%	18%	323	169	52%		37	19	51%	
15 Štokr	101	20%	11	7	57	18%	56%	39%	66	18%	5	5	37	15%	56%	41%	35	25%	6	2	20	23%	57%	34%	66	37	56%	41%	0			
17 Konečný	96	19%	10	6	47	17%	49%	32%	62	17%	4	3	36	11%	58%	47%	34	24%	6	3	11	26%	32%	6%	62	36	58%	47%	0			
13 Baránek	92	18%	9	12	48	23%	52%	29%	65	18%	9	7	35	25%	54%	29%	27	19%	0	5	13	19%	48%	30%	53	29	55%	32%	12	6	50%	17%
14 Bartos	71	14%	9	5	31	20%	44%	24%	49	14%	5	2	22	14%	45%	31%	22	16%	4	3	9	32%	41%	9%	31	15	48%	35%	18	7	39%	22%
1 Veselý	44	9%	2	1	17	7%	39%	32%	38	11%	2	1	15	8%	39%	32%	6	4%	0	0	2	0%	33%	33%	37	14	38%	30%	1	1	100%	100%
7 Holubec	40	8%	0	4	24	10%	60%	50%	36	10%	0	3	22	8%	61%	53%	4	3%	0	1	2	25%	50%	25%	35	21	60%	51%	1	1	100%	100%
19 Michalek	39	8%	8	0	16	21%	41%	21%	29	8%	5	0	13	17%	45%	28%	10	7%	3	0	3	30%	30%	0%	24	9	38%	17%	5	4	80%	80%
3 Mach	17	3%	1	2	9	18%	53%	35%	15	4%	1	1	8	13%	53%	40%	2	1%	0	1	1	50%	50%	0%	15	8	53%	40%	0			
24 Janouch	1	0%	0	1	0	100%	0%	-100%	0								1	1%	0	1	0	100%	0%	-100%	0				0			
4 Pfeffer	0								0								0								0				0			
6 Linz	0								0								0								0				0			
8 Habr	0								0								0								0				0			
11 Krystof	0								0								0								0				0			

	K1 after R#+								K1 after R-!								Freeball-Attacks							
	Σ	in %	=	/	#	=/%	#%	eff	Σ	in %	=	/	#	=/%	#%	eff	Σ	in %	=	/	#	=/%	#%	eff
Czech Republic 2015	233		16	13	138	12%	59%	47%	127		15	9	50	19%	39%	20%	52		7	6	23	25%	44%	19%
15 Štokr	40	17%	1	3	31	10%	78%	68%	26	20%	4	2	6	23%	23%	0%	12	171%	2	1	7	25%	58%	33%
17 Konečný	33	14%	1	2	20	9%	61%	52%	29	23%	3	1	16	14%	55%	41%	11	550%	2	2	2	36%	18%	-18%
13 Baránek	45	19%	6	4	26	22%	58%	36%	20	16%	3	3	9	30%	45%	15%	9	225%	0	2	4	22%	44%	22%
14 Bartos	26	11%	3	1	12	15%	46%	31%	23	18%	2	1	10	13%	43%	30%	10	200%	2	0	5	20%	50%	30%
1 Veselý	30	13%	2	1	12	10%	40%	30%	8	6%	0	0	3	0%	38%	38%	5	250%	0	0	2	0%	40%	40%
7 Holubec	28	12%	0	2	20	7%	71%	64%	8	6%	0	1	2	13%	25%	12%	1	100%	0	0	1	0%	100%	100%
19 Michalek	19	8%	3	0	10	16%	53%	37%	10	8%	2	0	3	20%	30%	10%	2	200%	1	0	1	50%	50%	0%
3 Mach	12	5%	0	0	7	0%	58%	58%	3	2%	1	1	1	67%	33%	-33%	2	200%	0	1	1	50%	50%	0%
24 Janouch	0								0								0							
4 Pfeffer	0								0								0							
6 Linz	0								0								0							
8 Habr	0								0								0							
11 Krystof	0								0								0							

Rotation 1

Czech Republic 2015

Base K1 37% (11) Base K2 0% (0) Base K7 63% (19) Base KD 0% (0)



Distribution

K1 after all R 55 42% 58% K1 after R#+ 30 57% 70% K2 Transition 13 38% 62%

0	-	3	5%	0	-	0	-	2	7%	0	-	0	-	0	-
-	-	-67%	0%	-	-	-	-	-50%	0%	-	-	-	-	-	-
16	29%	15	27%	21	38%	11	37%	10	33%	7	23%	4	31%	2	15%
56%	69%	53%	60%	38%	57%	55%	73%	70%	70%	71%	86%	75%	75%	50%	50%

Reception	Σ	Σ %	=/	=/ %	+	+ %	#	# %	+ # %	Eff
Czech Republic 2015	63	100%	7	11%	12	19%	18	29%	48%	37%
11 Krystof	32	51%	2	6%	7	22%	11	34%	56%	50%
13 Baránek	12	19%	1	8%	2	17%	4	33%	50%	42%
14 Bartos	11	17%	3	27%	2	18%	2	18%	36%	9%
19 Michalek	4	6%	1	25%	0	0%	0	0%	0%	-25%
4 Pfeffer	3	5%	0	0%	1	33%	1	33%	67%	67%
17 Konečný	1	2%	0	0%	0	0%	0	0%	0%	0%

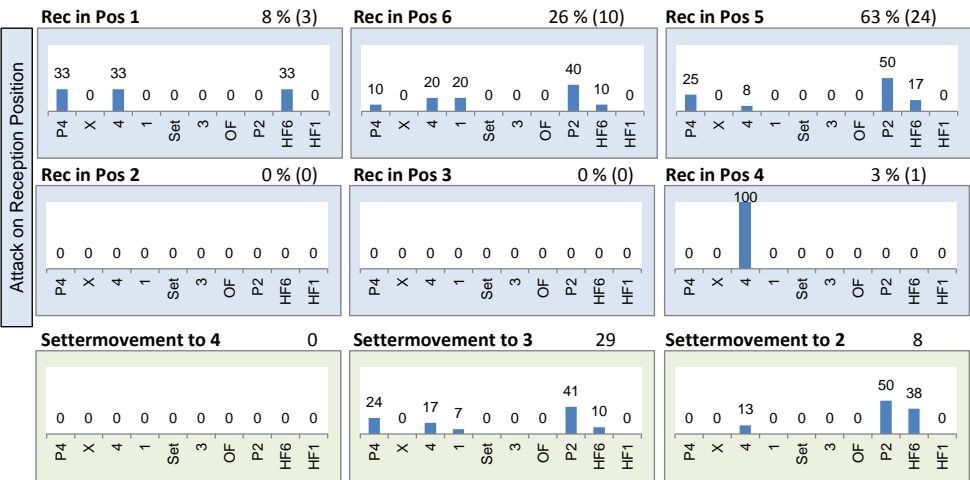
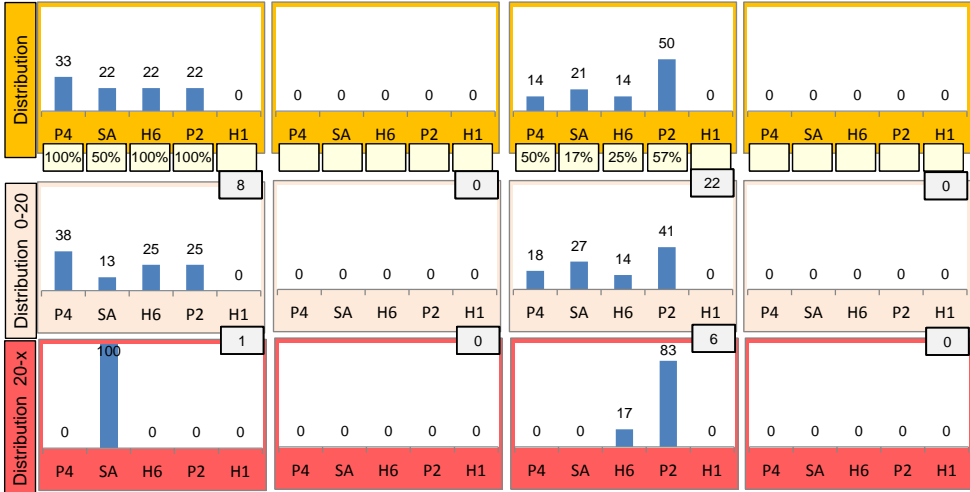
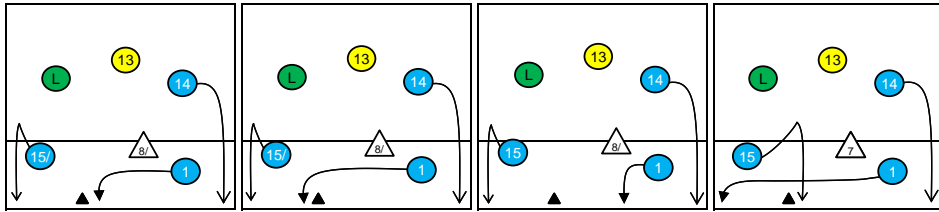
K1-Attacks after R#+	Σ	Σ %	=	= %	#	# %	Eff
Czech Republic 2015	30	100%	3	10%	21	70%	57%
13 Baránek	9	30%	2	22%	5	56%	33%
7 Holubec	8	27%	0	0%	6	75%	75%
15 Štokr	6	20%	0	0%	6	100%	100%
19 Michalek	3	10%	0	0%	3	100%	100%
3 Mach	2	7%	0	0%	1	50%	50%
14 Bartos	1	3%	1	100%	0	0%	-100%
17 Konečný	1	3%	0	0%	0	0%	-100%

K2-Attacks - Transition	Σ	Σ %	=	= %	#	# %	Eff
Czech Republic 2015	13	100%	3	23%	8	62%	38%
17 Konečný	4	31%	0	0%	4	100%	100%
19 Michalek	3	23%	3	100%	0	0%	-100%
15 Štokr	2	15%	0	0%	1	50%	50%
1 Veselý	1	8%	0	0%	0	0%	0%
7 Holubec	1	8%	0	0%	1	100%	100%
13 Baránek	1	8%	0	0%	1	100%	100%
14 Bartos	1	8%	0	0%	1	100%	100%

Rotation 5

Czech Republic 2015

Base K1 24% (9) Base K2 0% (0) Base K7 76% (28) Base KD 0% (0)



Distribution

K1 after all R 58 50% 57% K1 after R# 38 53% 58% K2 Transition 19 0% 32%

1	2%	6	10%	0	-	0	-	6	16%	0	-	0	-	2	11%	0	-
0%	0%	50%	67%	-	-	-	-	50%	67%	-	-	-	-	0%	50%	-	-
21	36%	11	19%	19	33%	16	42%	8	21%	8	21%	9	47%	0	-	8	42%
67%	71%	27%	27%	47%	58%	62%	69%	25%	25%	62%	63%	11%	33%	-	-	-12%	25%

Reception	Σ	Σ %	=/ %	=/ %	+ %	+ %	#	# %	+ # %	Eff
Czech Republic 2015	61	100%	2	3%	21	34%	17	28%	62%	59%
14 Bartos	25	41%	1	4%	10	40%	8	32%	72%	68%
13 Baránek	17	28%	1	6%	4	24%	4	24%	47%	41%
19 Michalek	11	18%	0	0%	4	36%	3	27%	64%	64%
11 Krystof	6	10%	0	0%	1	17%	2	33%	50%	50%
4 Pfeffer	1	2%	0	0%	1	100%	0	0%	100%	100%
7 Holubec	1	2%	0	0%	1	100%	0	0%	100%	100%

K1-Attacks after R#	Σ	Σ %	= %	= %	#	# %	Eff
Czech Republic 2015	38	100%	2	5%	22	58%	53%
15 Štokr	10	26%	0	0%	7	70%	70%
1 Veselý	6	16%	0	0%	0	0%	0%
14 Bartos	6	16%	0	0%	3	50%	50%
17 Konečný	6	16%	1	17%	4	67%	50%
13 Baránek	4	11%	0	0%	4	100%	100%
19 Michalek	4	11%	1	25%	2	50%	25%
7 Holubec	2	5%	0	0%	2	100%	100%

K2-Attacks - Transition	Σ	Σ %	= %	= %	#	# %	Eff
Czech Republic 2015	19	100%	3	16%	6	32%	0%
14 Bartos	6	32%	1	17%	2	33%	0%
17 Konečný	6	32%	1	17%	1	17%	0%
13 Baránek	4	21%	0	0%	1	25%	-25%
15 Štokr	3	16%	1	33%	2	67%	33%
1 Veselý	0	0%	0	-	0	-	-
3 Mach	0	0%	0	-	0	-	-
4 Pfeffer	0	0%	0	-	0	-	-

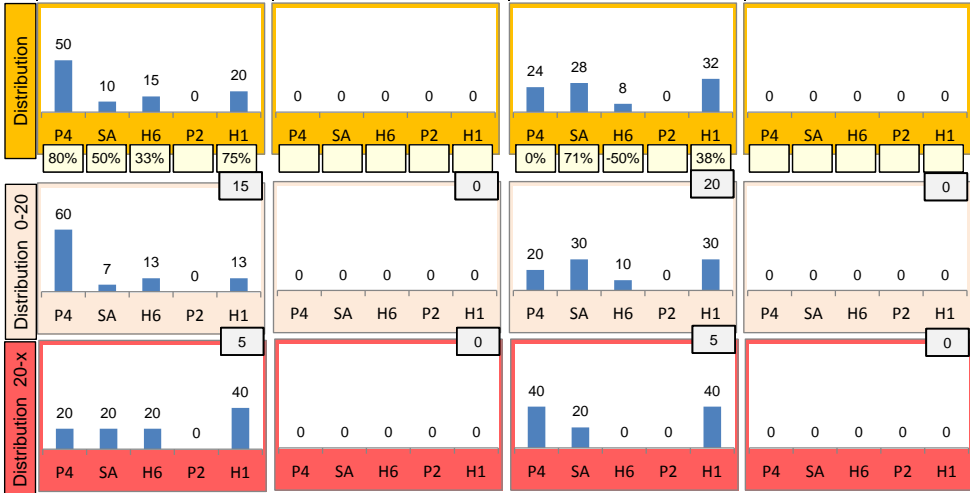
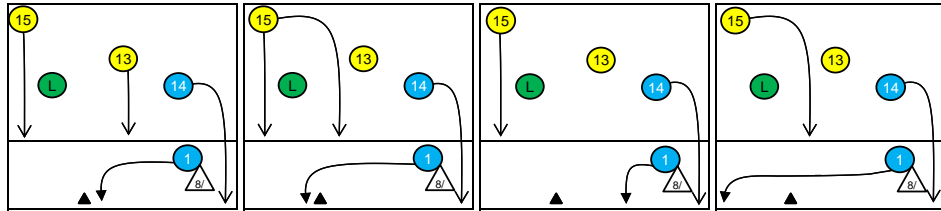
Rotation 4

Czech Republic 2015

Distribution

Base K1 44 % (20) Base K2 0 % (0) Base K7 56 % (25) Base KD 0 % (0)

K1 after all R 53 43% 53% K1 after R#+ 42 48% 57% K2 Transition 24 29% 46%

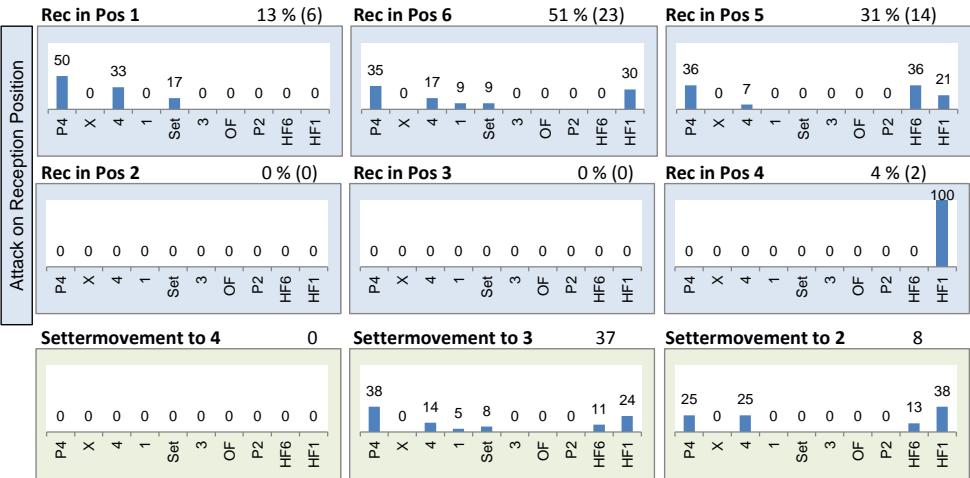


17	32%	7	13%	0	-	12	29%	5	12%	0	-	14	58%	0	-	0	-
53%	59%	-14%	29%	-	-	50%	58%	0%	40%	-	-	14%	36%	-	-	-	-
0	-	11	21%	18	34%	0	-	9	21%	16	38%	0	-	1	4%	8	33%
-	-	64%	64%	44%	50%	-	-	67%	67%	50%	56%	-	-	100%	100%	50%	63%

Reception	Σ	Σ %	=	= %	+	+ %	#	# %	+ # %	Eff
Czech Republic 2015	65	100%	5	8%	23	35%	22	34%	69%	62%
19 Michalek	17	26%	0	0%	8	47%	3	18%	65%	65%
14 Bartos	16	25%	3	19%	4	25%	6	38%	63%	44%
13 Baránek	13	20%	0	0%	5	38%	6	46%	85%	85%
11 Krystof	11	17%	1	9%	3	27%	6	55%	82%	73%
4 Pfeffer	4	6%	0	0%	2	50%	0	0%	50%	50%
1 Vesely	3	5%	1	33%	1	33%	0	0%	33%	0%

K1-Attacks after R#+	Σ	Σ %	=	= %	#	# %	Eff
Czech Republic 2015	42	100%	2	5%	24	57%	48%
14 Bartos	12	29%	1	8%	6	50%	42%
13 Baránek	8	19%	1	13%	5	63%	38%
1 Vesely	7	17%	0	0%	4	57%	57%
17 Konečný	7	17%	0	0%	4	57%	57%
15 Štokr	5	12%	0	0%	3	60%	40%
7 Holubec	2	5%	0	0%	2	100%	100%
19 Michalek	1	2%	0	0%	0	0%	0%

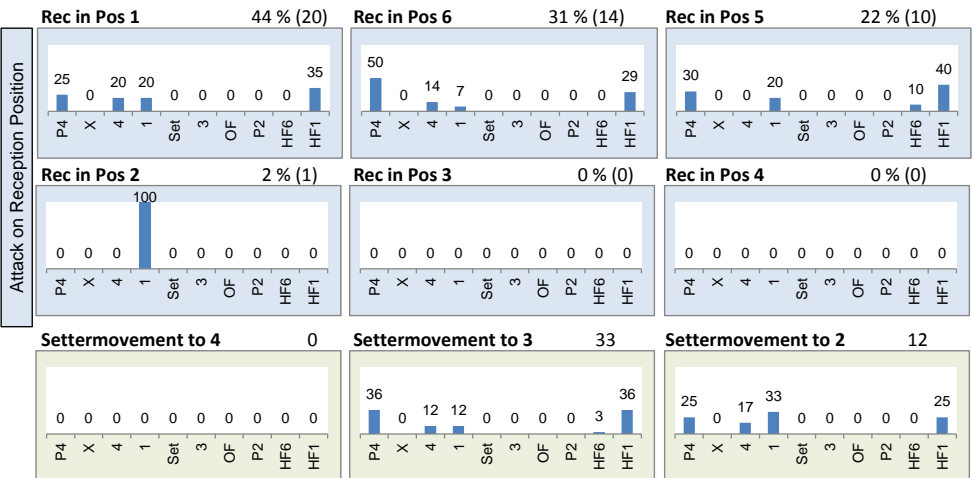
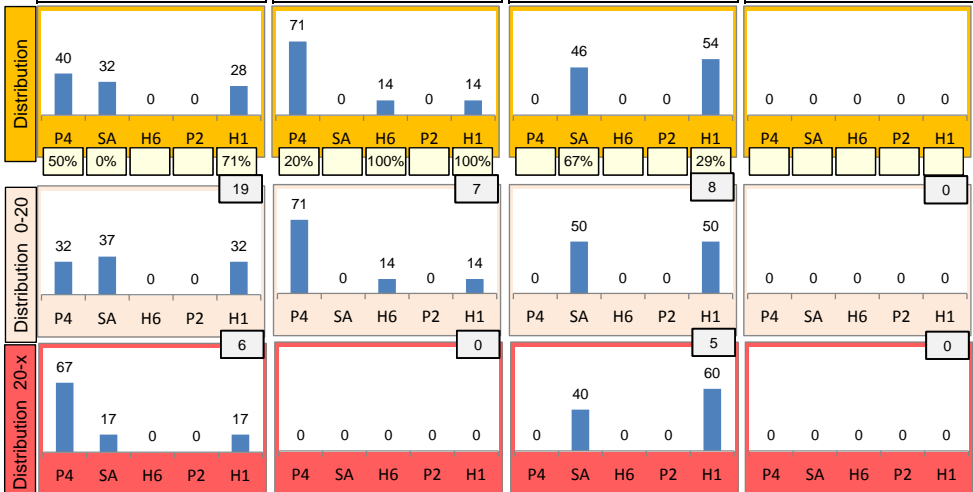
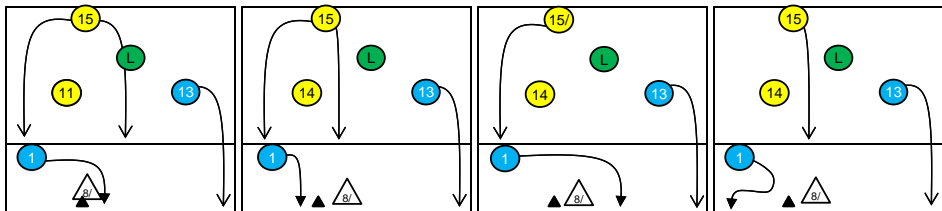
K2-Attacks - Transitor	Σ	Σ %	=	= %	#	# %	Eff
Czech Republic 2015	24	100%	3	13%	11	46%	29%
17 Konečný	8	33%	2	25%	2	25%	0%
15 Štokr	7	29%	0	0%	3	43%	29%
13 Baránek	4	17%	0	0%	3	75%	75%
14 Bartos	4	17%	1	25%	2	50%	25%
1 Vesely	1	4%	0	0%	1	100%	100%
3 Mach	0	0%	0	-	0	-	-
4 Pfeffer	0	0%	0	-	0	-	-



Rotation 3

Czech Republic 2015

Base K1 56 % (25) Base K2 16 % (7) Base K7 29 % (13) Base KD 0 % (0)



Distribution

K1 after all R 67 31% 48% K1 after R#+ 45 42% 56% K2 Transition 35 17% 46%

22	33%	2	3%	0	-	15	33%	1	2%	0	-	15	43%	3	9%	0	-
45%	59%	0%	50%	-	-	53%	67%	100%	100%	-	-	-13%	40%	33%	67%	-	-
0	-	17	25%	26	39%	0	-	14	31%	15	33%	0	-	4	11%	13	37%
-	-	29%	41%	23%	42%	-	-	29%	43%	40%	53%	-	-	0%	25%	54%	54%

Reception	Σ	Σ %	=/	=/ %	+	+ %	#	# %	+ # %	Eff
Czech Republic 2015	81	100%	7	9%	23	28%	22	27%	56%	47%
14 Bartos	49	60%	3	6%	13	27%	14	29%	55%	49%
11 Krystof	14	17%	2	14%	3	21%	5	36%	57%	43%
19 Michalek	9	11%	1	11%	3	33%	1	11%	44%	33%
13 Baránek	5	6%	1	20%	2	40%	1	20%	60%	40%
1 Veselý	2	2%	0	0%	0	0%	1	50%	50%	50%
4 Pfeffer	2	2%	0	0%	2	100%	0	0%	100%	100%

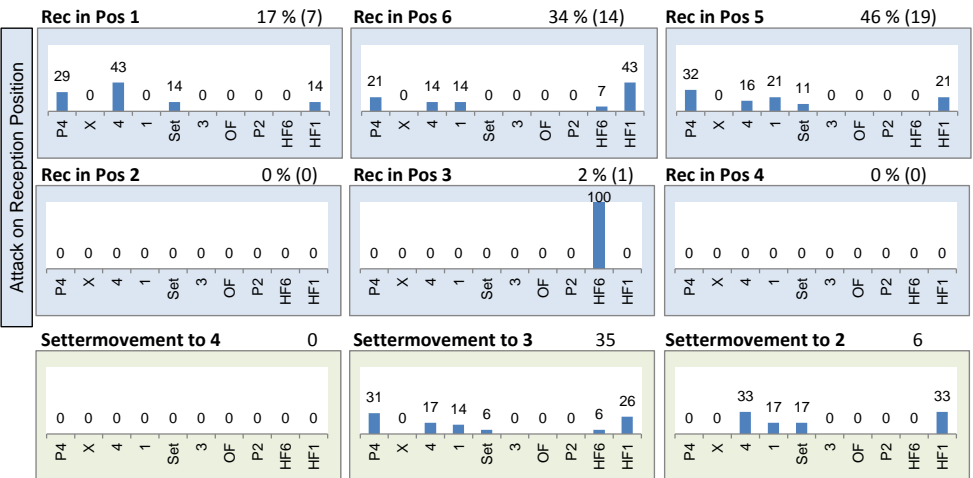
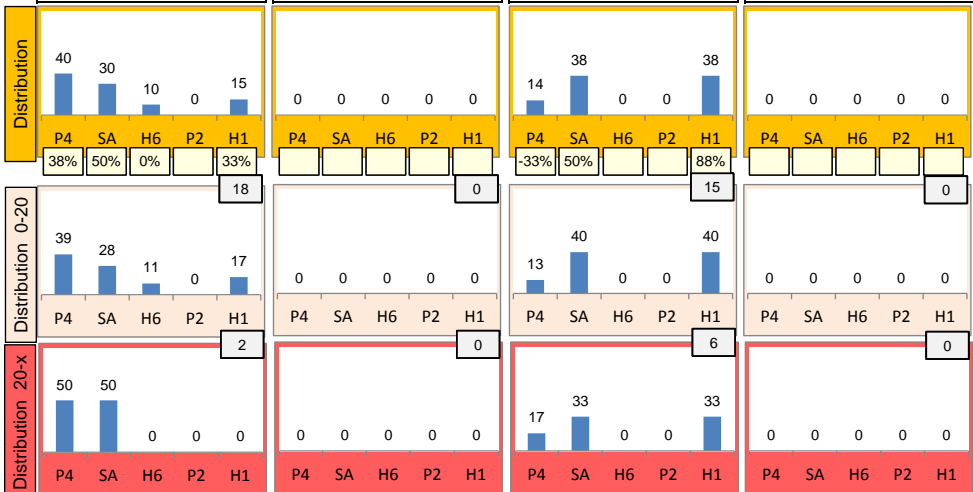
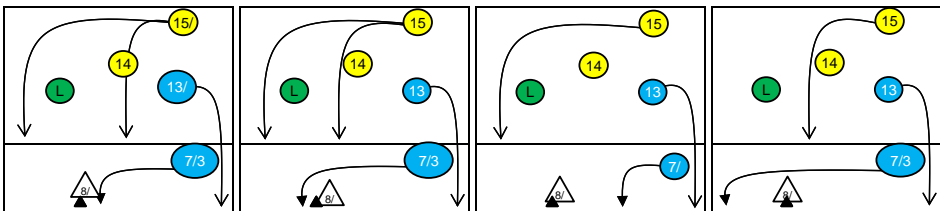
K1-Attacks after R#+	Σ	Σ %	=	= %	#	# %	Eff
Czech Republic 2015	45	100%	3	7%	25	56%	42%
1 Veselý	14	31%	1	7%	6	43%	29%
13 Baránek	9	20%	2	22%	6	67%	44%
17 Konečný	8	18%	0	0%	5	63%	50%
15 Štokr	7	16%	0	0%	5	71%	57%
19 Michalek	6	13%	0	0%	3	50%	50%
14 Bartos	1	2%	0	0%	0	0%	0%
3 Mach	0	0%	0	-	0	-	-

K2-Attacks - Transition	Σ	Σ %	=	= %	#	# %	Eff
Czech Republic 2015	35	100%	6	17%	16	46%	17%
15 Štokr	9	26%	4	44%	5	56%	11%
13 Baránek	8	23%	0	0%	4	50%	50%
17 Konečný	7	20%	2	29%	2	29%	-29%
19 Michalek	4	11%	0	0%	3	75%	75%
1 Veselý	3	9%	0	0%	1	33%	33%
14 Bartos	2	6%	0	0%	1	50%	50%
7 Holubec	1	3%	0	0%	0	0%	-100%

Rotation 2

Czech Republic 2015

Base K1 49 % (20) Base K2 0 % (0) Base K7 51 % (21) Base KD 0 % (0)



Distribution

K1 after all R 60 28% 53% K1 after R#+ 38 45% 66% K2 Transition 21 24% 43%

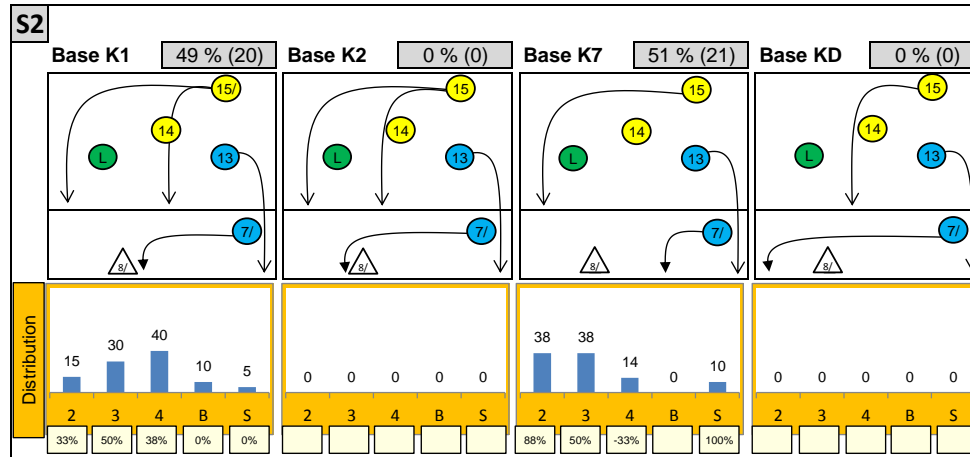
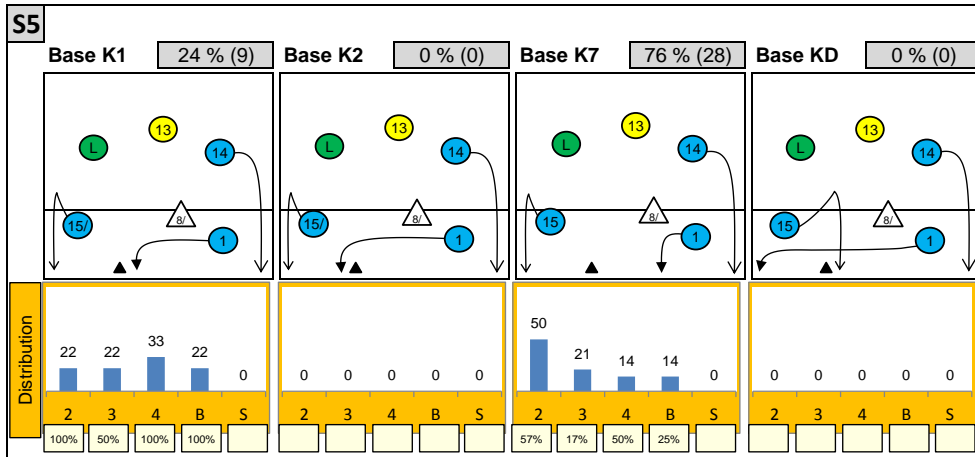
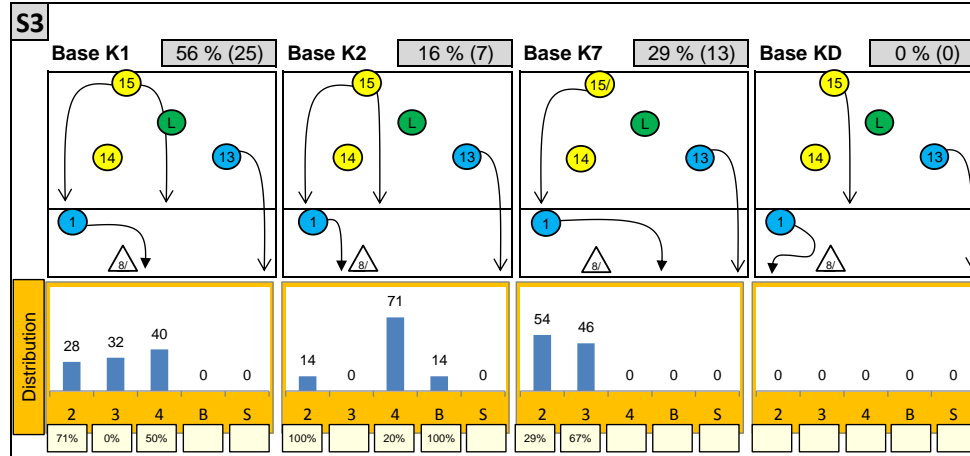
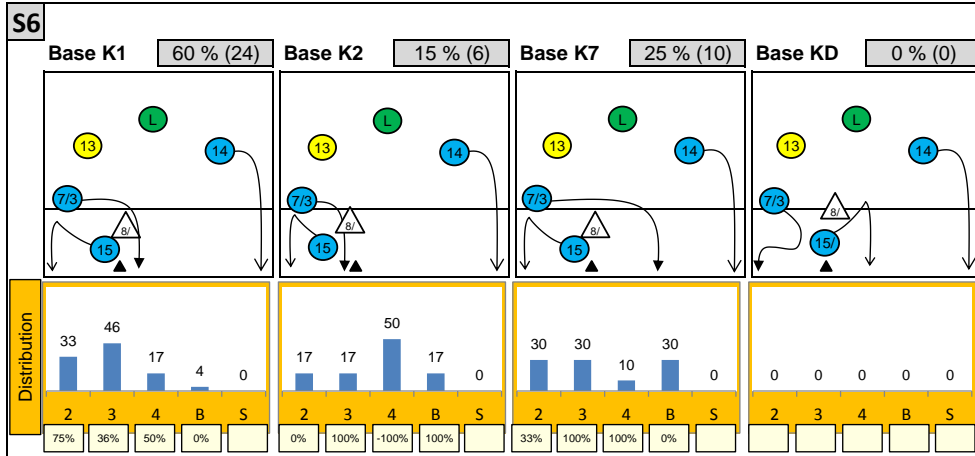
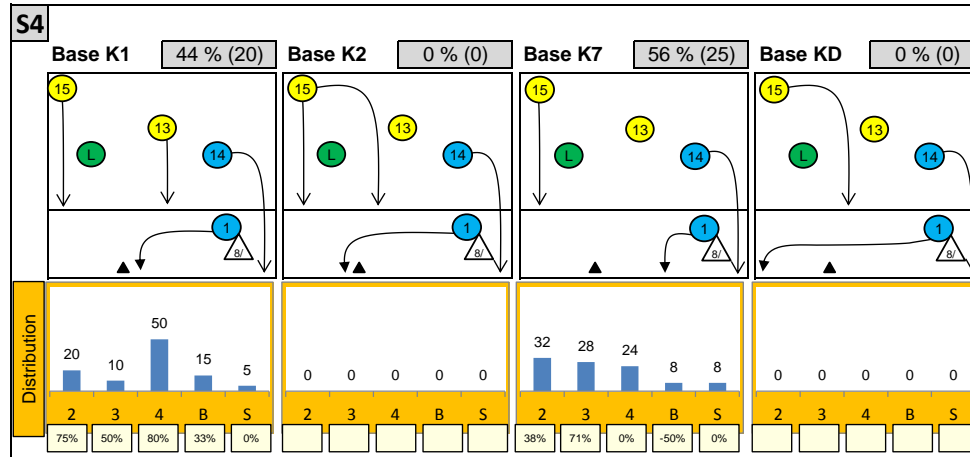
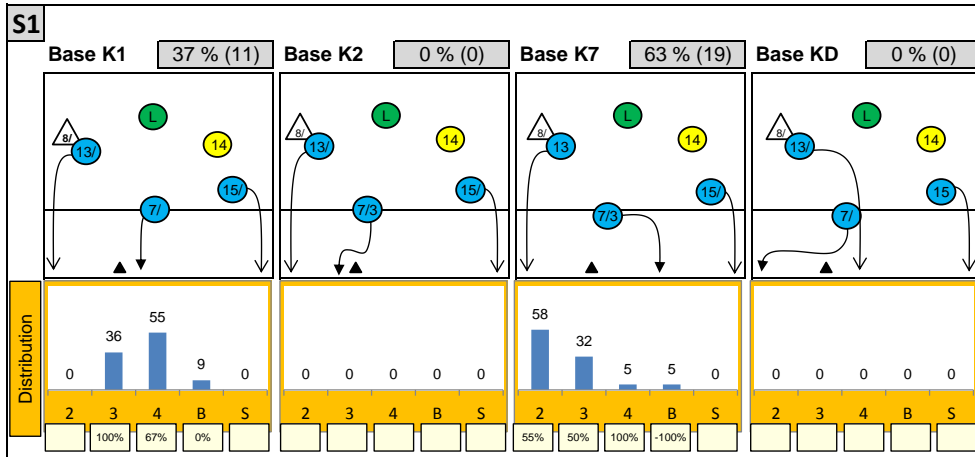
Category	Count	%	Count	%	Count	%
20	33%	5	8%	0	-	
50%	65%	-20%	20%	-	-	
0	-	18	30%	17	28%	
-	-	28%	56%	18%	47%	

Reception	Σ	Σ %	=	= %	+	+ %	#	# %	+ # %	Eff
Czech Republic 2015	75	100%	5	7%	19	25%	22	29%	55%	48%
14 Bartos	37	49%	1	3%	11	30%	11	30%	59%	57%
13 Baránek	12	16%	1	8%	3	25%	4	33%	58%	50%
11 Krystof	11	15%	0	0%	4	36%	4	36%	73%	73%
19 Michalek	8	11%	2	25%	0	0%	2	25%	25%	0%
4 Pfeffer	4	5%	0	0%	1	25%	0	0%	25%	25%
7 Holubec	3	4%	1	33%	0	0%	1	33%	33%	0%

K1-Attacks after R#+	Σ	Σ %	=	= %	#	# %	Eff
Czech Republic 2015	38	100%	5	13%	25	66%	45%
13 Baránek	9	24%	1	11%	4	44%	22%
7 Holubec	7	18%	0	0%	4	57%	29%
15 Štokr	6	16%	1	17%	5	83%	67%
17 Konečný	5	13%	0	0%	4	80%	80%
3 Mach	4	11%	0	0%	4	100%	100%
1 Veselý	3	8%	1	33%	2	67%	33%
14 Bartos	2	5%	1	50%	1	50%	0%

K2-Attacks - Transitor	Σ	Σ %	=	= %	#	# %	Eff
Czech Republic 2015	21	100%	0	0%	9	43%	24%
13 Baránek	6	29%	0	0%	3	50%	33%
15 Štokr	5	24%	0	0%	3	60%	40%
19 Michalek	3	14%	0	0%	0	0%	0%
3 Mach	2	10%	0	0%	1	50%	0%
7 Holubec	2	10%	0	0%	1	50%	50%
17 Konečný	2	10%	0	0%	1	50%	0%
14 Bartos	1	5%	0	0%	0	0%	0%

Attackdistribution depending on Settercalls - Czech Republic 2015



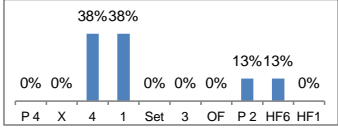
2: Attack of Opposite 3: Attack of Middleblocker 4: Attack of Outside B: Attack of Backrow

S: Attack of Setter xx%: Efficiency of Attacks (-100% to +100%)

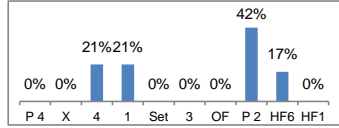
Attacks depending on Reception Position - Czech Republic 2015

Setter back (S1, S6, S5) - R#+

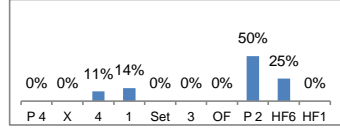
R in Pos 1 13% (16)



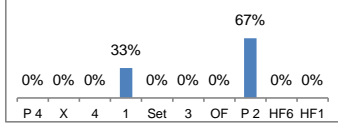
R in Pos 6 32% (40)



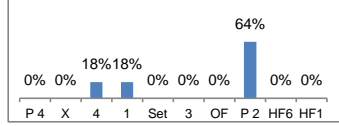
R in Pos 5 36% (45)



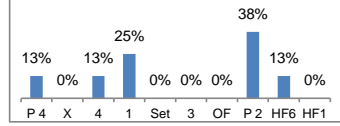
R in Pos 9 5% (6)



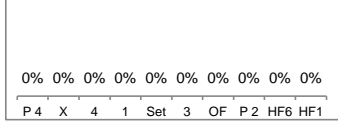
R in Pos 8 10% (13)



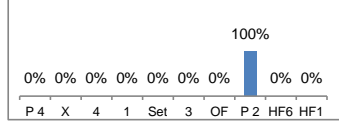
R in Pos 7 9% (11)



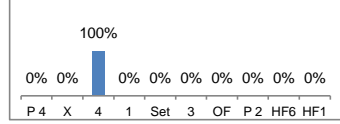
R in Pos 2 0% (0)



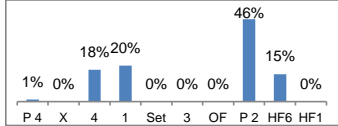
R in Pos 3 2% (2)



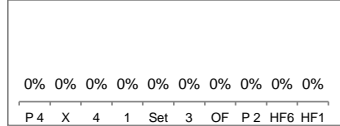
R in Pos 4 1% (1)



alle Pos 106% (134)

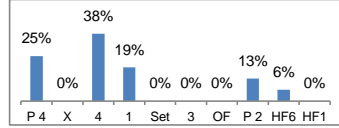


ohne R Pos -6% (-8)

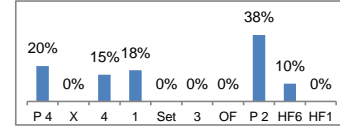


Setter back (S1, S6, S5) - all Receptions

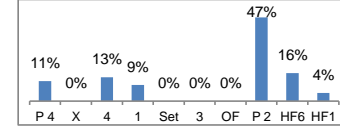
R in Pos 1 13% (16)



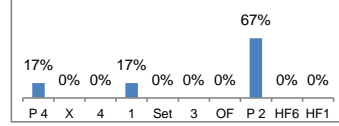
R in Pos 6 32% (40)



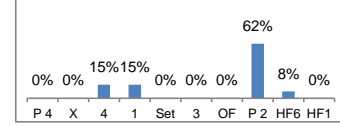
R in Pos 5 36% (45)



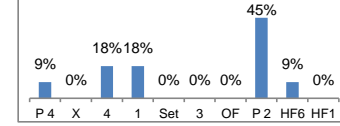
R in Pos 9 5% (6)



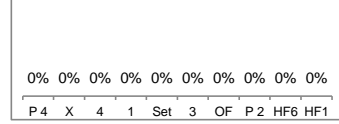
R in Pos 8 10% (13)



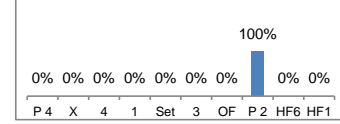
R in Pos 7 9% (11)



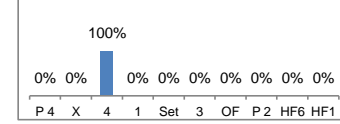
R in Pos 2 0% (0)



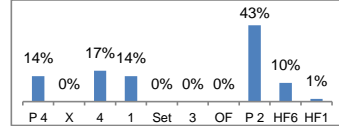
R in Pos 3 2% (2)



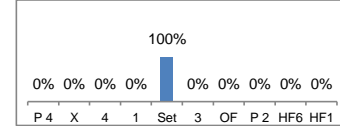
R in Pos 4 1% (1)



alle Pos 106% (134)

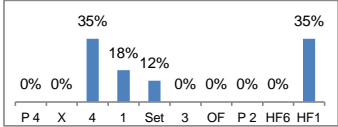


ohne R Pos -6% (-8)

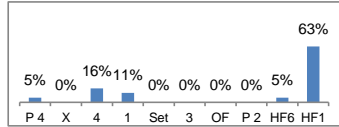


Setter front (S4, S3, S2) - R#+

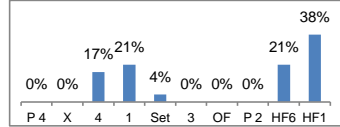
R in Pos 1 19% (26)



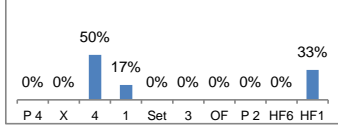
R in Pos 6 24% (33)



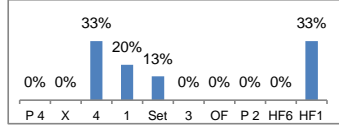
R in Pos 5 24% (33)



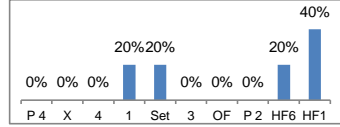
R in Pos 9 8% (11)



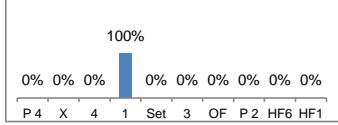
R in Pos 8 8% (11)



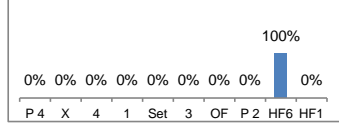
R in Pos 7 7% (9)



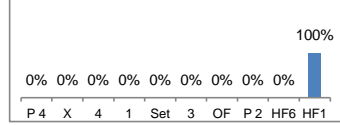
R in Pos 2 1% (2)



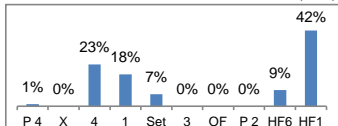
R in Pos 3 1% (1)



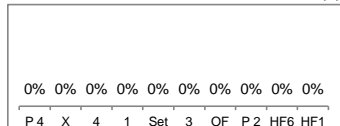
R in Pos 4 2% (3)



alle Pos 100% (137)

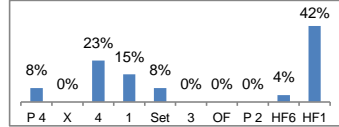


ohne R Pos 0% (0)

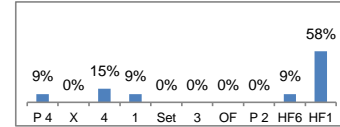


Setter front (S4, S3, S2) - all Receptions

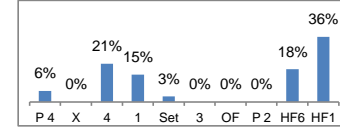
R in Pos 1 19% (26)



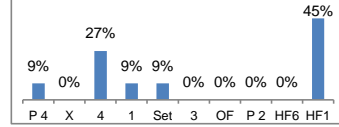
R in Pos 6 24% (33)



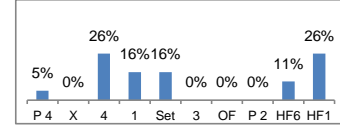
R in Pos 5 24% (33)



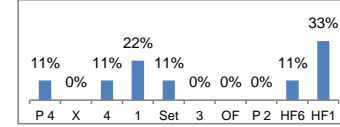
R in Pos 9 8% (11)



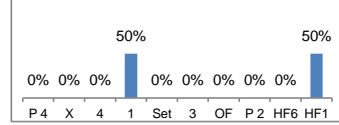
R in Pos 8 14% (19)



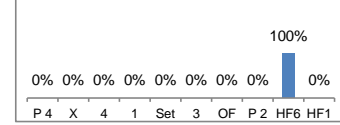
R in Pos 7 7% (9)



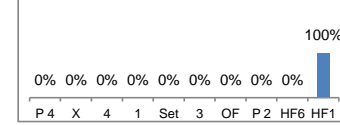
R in Pos 2 1% (2)



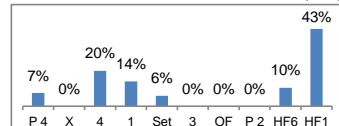
R in Pos 3 1% (1)



R in Pos 4 2% (3)



alle Pos 100% (137)



ohne R Pos 0% (0)

