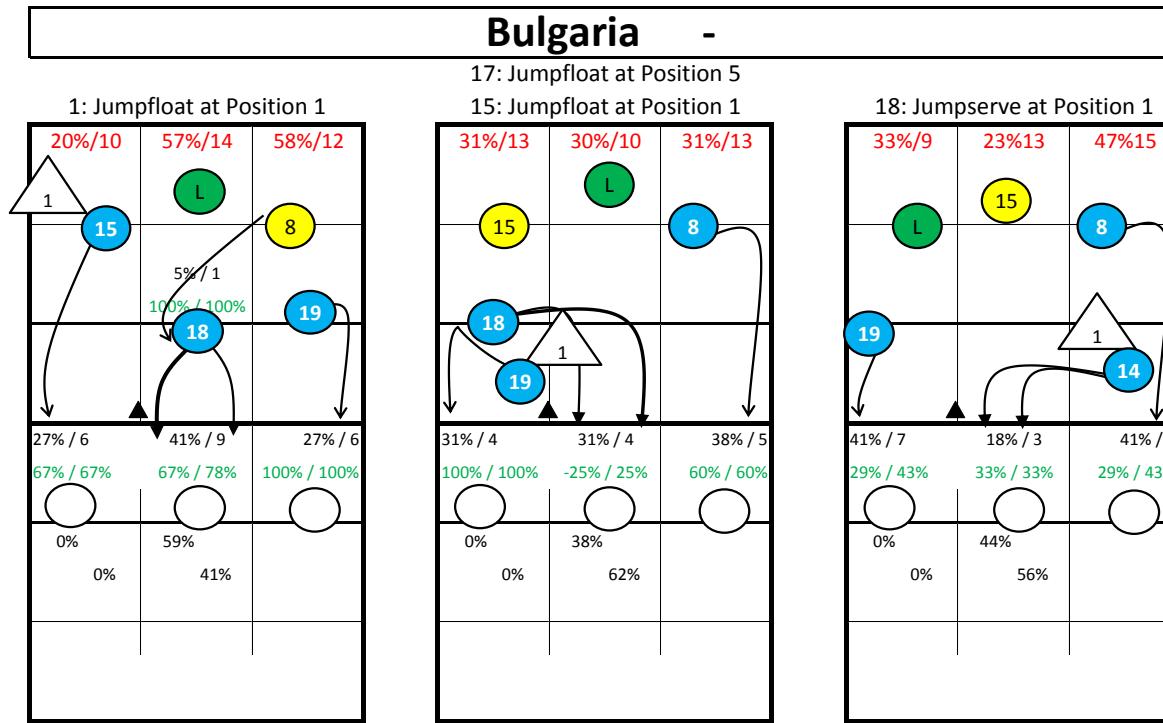


Roster

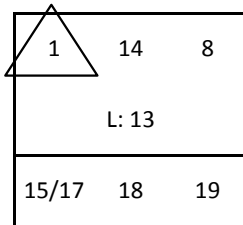
- 1 BRATOEV G.
- 3 ZHEKOV
- 6 MILUSHEV
- 8 SKRIMOV
- 10 BRATOEV V.
- 12 YOSIFOV
- 13 SALPAROV
- 14 TODOROV
- 15 ALEKSIEV
- 17 PENCHEV
- 18 NIKOLOV
- 19 SOKOLOV

- Set
- Set
- Opp
- Out
- Out
- MB
- Lib
- MB
- Out
- Out
- MB
- Opp

Bulgaria -

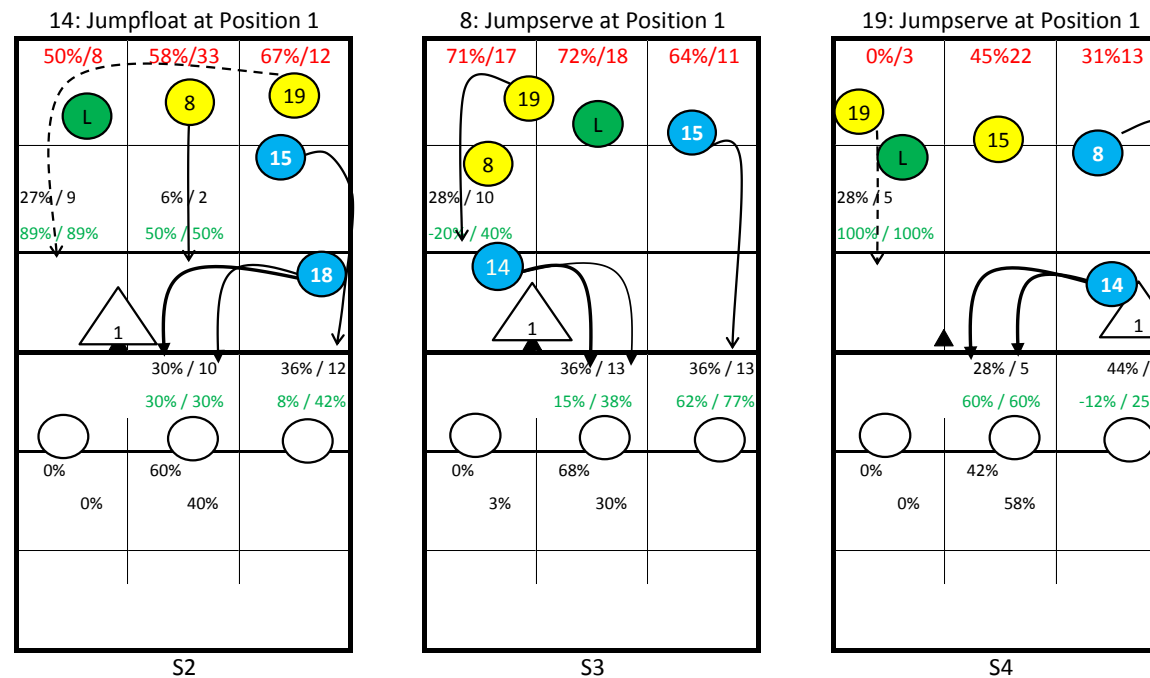


Starting Lineup:



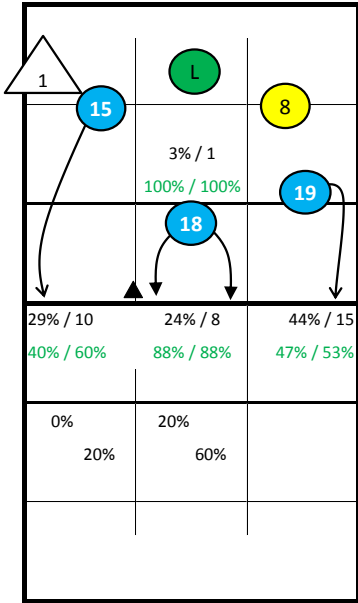
Rotation:

Ser: S1
Rec: S2

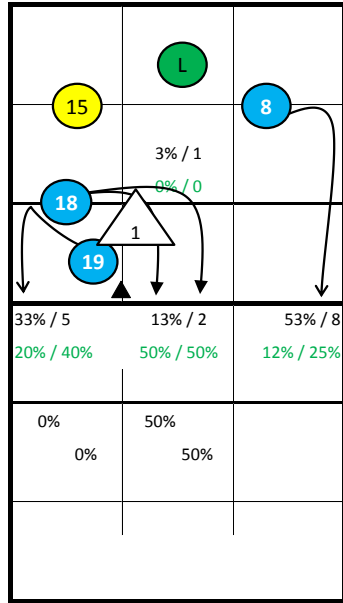


Notes:

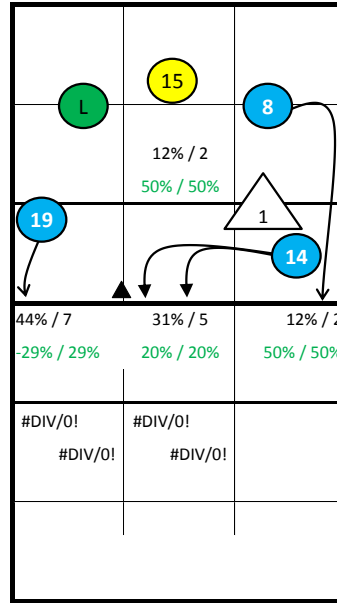
Bulgaria -



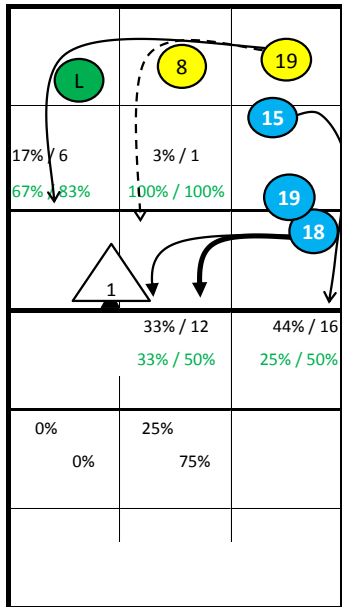
S1



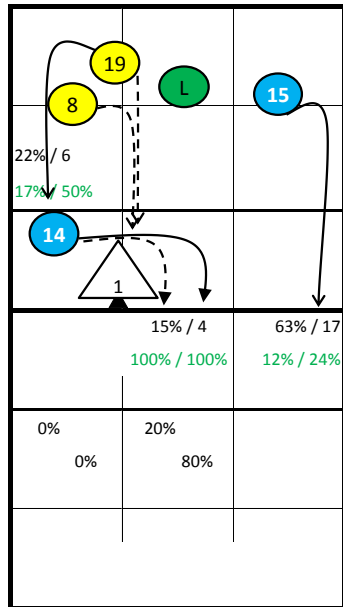
S6



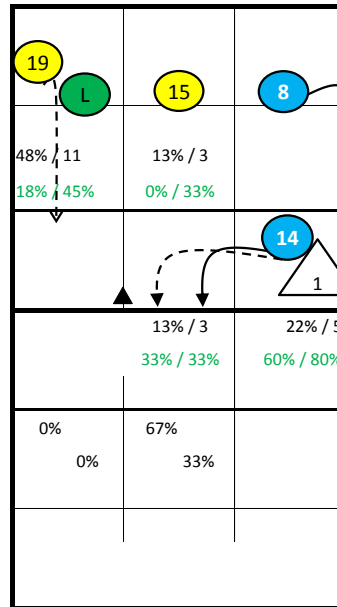
S5



S2



S3



S4

Notes:

Bulgaria - all Statistics

pld Set	Points					Serve								Reception										Attack											
	pts	P/s	easy=	all=	W-L	Σ	=	-	+	#	=%	#%	eff%	Σ	in %	=	/	-	+	#	=/%	+#%	#%	eff%	Σ	in %	=	/	!	+	#	=/%	#%	eff%	
Bulgaria	16	284	17,8	105	293	-9	387	59	163	137	28	15%	7%	43%	287	12	5	131	53	86	6%	48%	30%	43%	408	3%	38	31	23	41	209	17%	51%	34%	
1 BRATOEV G.	16	10	0,6	10	23	-13	75	6	41	25	3	8%	4%	37%	1	0%	0	1	0	0	0%	0%	0%	0%	12	3%	1	1	0	2	4	17%	33%	17%	
3 ZHEKOV	0	0				0	0							0											0										
6 MILUSHEV	2	0				0	0							0											0										
8 SKRIMOV	16	42	2,6	15	38	4	63	7	25	26	5	11%	8%	49%	103	36%	6	0	44	17	36	6%	52%	35%	46%	64	16%	7	4	6	5	35	17%	55%	38%
10 BRATOEV V.	0	0				0	0							0											0										
12 YOSIFOV	15	31	2,1	16	41	-10	71	13	26	23	9	18%	13%	45%	1	0%	0	1	0	0	0%	0%	0%	0%	23	6%	3	1	2	4	10	17%	43%	26%	
13 SALPAROV	16	0		1	25	-25	0							62	22%	3	0	28	15	16	5%	50%	26%	45%	0										
14 TODOROV	8	8	1,0		6	2	15	0	7	8	0	0%	0%	53%	0										10	2%	0	0	1	1	4	0%	40%	40%	
15 ALEKSIEV	15	50	3,3	9	41	9	45	3	29	13	0	7%	0%	29%	81	28%	3	3	41	12	22	7%	42%	27%	35%	96	24%	6	9	6	13	44	16%	46%	30%
17 PENCHEV	10	6	0,6	4	7	-1	12	0	5	6	1	0%	8%	58%	37	13%	0	2	15	9	11	5%	54%	30%	49%	12	3%	3	0	0	1	5	25%	42%	17%
18 NIKOLOV	14	33	2,4	13	34	-1	40	10	10	18	2	25%	5%	50%	2	1%	0	0	1	0	1	0%	50%	50%	50%	35	9%	1	2	5	3	20	9%	57%	49%
19 SOKOLOV	16	104	6,5	37	77	27	66	20	20	18	8	30%	12%	39%	0										156	38%	17	14	3	12	87	20%	56%	36%	

	Block						Defense						Freeball					Set		
	Σ	=	+	#	#%	eff%	Σ	=	/-!	+#	+#%	eff%	Σ	err	bad	god	eff%	Σ	=	eff%
Bulgaria	198	82	36	47	24%	1%	219	65	57	97	44%	48%	24	0	6	18	75%	325	6	90%
1 BRATOEV G.	18	7	3	3	17%	-6%	23	5	10	8	35%	39%	4	0	3	1	25%	282	3	97%
3 ZHEKOV	0						0						0					0		
6 MILUSHEV	0						0						0					0		
8 SKRIMOV	11	6	2	2	18%	-18%	35	8	9	18	51%	51%	5	0	2	3	60%	2	0	0%
10 BRATOEV V.	0						0						0					0		
12 YOSIFOV	46	20	8	12	26%	0%	7	4	1	2	29%	29%	2	0	0	2	100%	2	0	0%
13 SALPAROV	0						72	21	20	31	43%	53%	5	0	0	5	100%	18	1	61%
14 TODOROV	13	6	2	4	31%	0%	2	0	0	2	100%	100%	0					1	0	100%
15 ALEKSIEV	31	10	9	6	19%	16%	28	10	8	10	36%	36%	4	0	1	3	75%	8	0	62%
17 PENCHEV	1	1	0	0	0%	-100%	6	2	2	2	33%	33%	0					1	1	-100%
18 NIKOLOV	42	15	10	11	26%	14%	15	5	4	6	40%	47%	1	0	0	1	100%	3	1	33%
19 SOKOLOV	33	16	2	9	27%	-15%	30	10	3	17	57%	57%	3	0	0	3	100%	8	0	50%

pld Set played Sets
 P/s Points per Set
 pts Points
 easy= easy errors (serve, net contact, ...)
 all= all errors
 W-L points - errors
 Σ sum of all events
 in % in percent of all team events

Bulgaria - Attack-Statistic

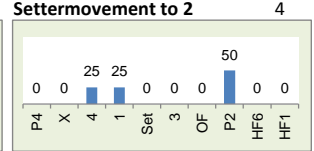
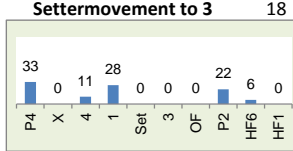
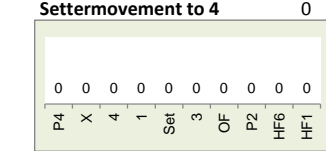
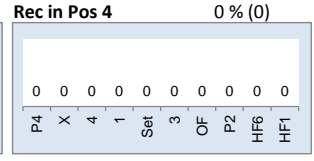
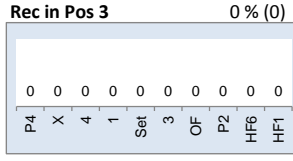
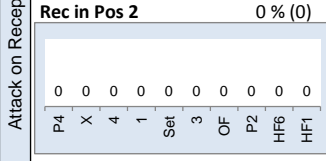
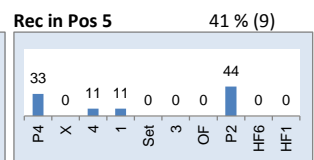
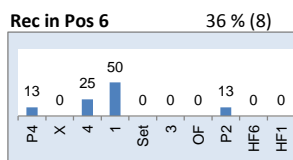
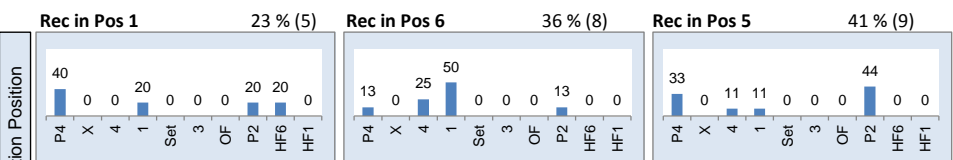
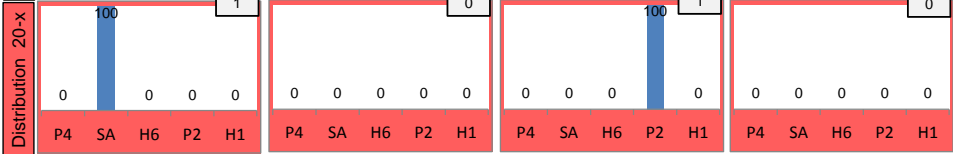
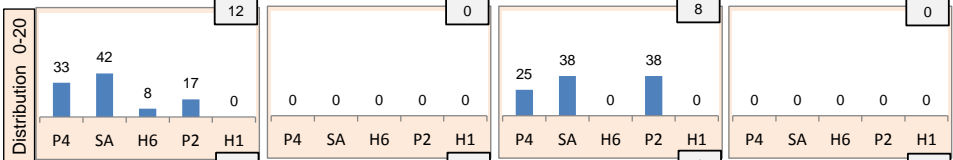
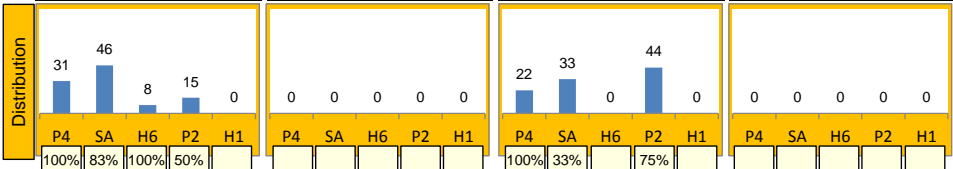
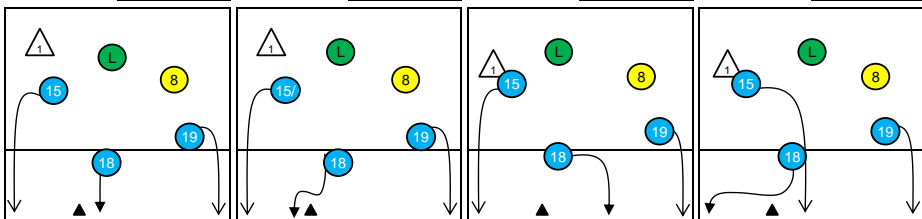
	K1 & K2 Attacks								K1 All Attacks							K2 Attacks							K1 aft R other Ply				K1 after own Rec					
	Σ	in %	=	/	#	=/%	#%	eff	Σ	in %	=	/	#	=/%	#%	eff	Σ	in %	=	/	#	=/%	#%	eff	sum	#	#%	eff	sum	#	#%	eff
Bulgaria	384		36	30	196	17%	51%	34%	252		25	18	134	17%	53%	36%	132		11	12	62	17%	47%	30%	224	120	54%		28	14	50%	
19 SOKOLOV	154	40%	17	14	86	20%	56%	36%	103	41%	7	9	61	16%	59%	44%	51	39%	10	5	25	29%	49%	20%	103	61	59%	44%	0			
15 ALEKSIEV	92	24%	5	9	41	15%	45%	29%	46	18%	5	3	22	17%	48%	30%	46	35%	0	6	19	13%	41%	28%	34	18	53%	38%	12	4	33%	8%
8 SKRIMOV	62	16%	7	4	34	18%	55%	37%	46	18%	6	3	26	20%	57%	37%	16	12%	1	1	8	13%	50%	38%	35	19	54%	29%	11	7	64%	64%
18 NIKOLOV	30	8%	1	2	16	10%	53%	43%	19	8%	1	2	10	16%	53%	37%	11	8%	0	0	6	0%	55%	55%	19	10	53%	37%	0			
12 YOSIFOV	23	6%	3	1	10	17%	43%	26%	20	8%	3	1	8	20%	40%	20%	3	2%	0	0	2	0%	67%	67%	20	8	40%	20%	0			
17 PENCHEV	12	3%	3	0	5	25%	42%	17%	10	4%	3	0	3	30%	30%	0%	2	2%	0	0	2	0%	100%	100%	5	0	0%	-40%	5	3	60%	40%
14 TODOROV	10	3%	0	0	4	0%	40%	40%	8	3%	0	0	4	0%	50%	50%	2	2%	0	0	0	0%	0%	0%	8	4	50%	50%	0			
1 BRATOEV G.	1	0%	0	0	0	0%	0%	0%	0								1	1%	0	0	0	0%	0%	0%	0				0			
3 ZHEKOV	0								0								0								0				0			
6 MILUSHEV	0								0								0								0				0			
10 BRATOEV V.	0								0								0								0				0			
13 SALPAROV	0								0								0								0				0			

	K1 after R#+								K1 after R-!							Freeball-Attacks								
	Σ	in %	=	/	#	=/%	#%	eff	Σ	in %	=	/	#	=/%	#%	eff	Σ	in %	=	/	#	=/%	#%	eff
Bulgaria	135		11	11	79	16%	59%	42%	117		14	7	55	18%	47%	29%	52		4	2	27	12%	52%	40%
19 SOKOLOV	41	30%	1	6	30	17%	73%	56%	62	53%	6	3	31	15%	50%	35%	19	173%	4	0	11	21%	58%	37%
15 ALEKSIEV	26	19%	2	2	17	15%	65%	50%	20	17%	3	1	5	20%	25%	5%	19	271%	0	2	7	11%	37%	26%
8 SKRIMOV	21	16%	3	1	11	19%	52%	33%	25	21%	3	2	15	20%	60%	40%	6	120%	0	0	5	0%	83%	83%
18 NIKOLOV	17	13%	1	1	9	12%	53%	41%	2	2%	0	1	1	50%	50%	0%	4	400%	0	0	1	0%	25%	25%
12 YOSIFOV	17	13%	2	1	8	18%	47%	29%	3	3%	1	0	0	33%	0%	-33%	1	100%	0	0	1	0%	100%	100%
17 PENCHEV	7	5%	2	0	1	29%	14%	-14%	3	3%	1	0	2	33%	67%	33%	2	100%	0	0	2	0%	100%	100%
14 TODOROV	6	4%	0	0	3	0%	50%	50%	2	2%	0	0	1	0%	50%	50%	0							
1 BRATOEV G.	0								0								1	0	0	0	0	0%	0%	0%
3 ZHEKOV	0								0								0							
6 MILUSHEV	0								0								0							
10 BRATOEV V.	0								0								0							
13 SALPAROV	0								0								0							

Rotation 1

Bulgaria

Base K1 59% (13) Base K2 0% (0) Base K7 41% (9) Base KD 0% (0)



Distribution

K1 after all R 40 62% 68% K1 after R#+ 22 77% 82% K2 Transition 30 53% 63%

Base	0	1	3%	0	-
Base K1	0	1	3%	0	-
Base K2	0	1	5%	0	-
Base K7	0	1	3%	0	-
Base KD	0	1	3%	0	-

Reception

Base	Σ	Σ %	=	= %	+	+ %	#	# %	+ # %	Eff
Bulgaria	45	100%	3	7%	11	24%	11	24%	49%	42%
13 SALPAROV	14	31%	0	0%	3	21%	5	36%	57%	57%
8 SKRIMOV	12	27%	2	17%	4	33%	3	25%	58%	42%
15 ALEKSIEV	10	22%	0	0%	1	10%	1	10%	20%	20%
17 PENCHEV	9	20%	1	11%	3	33%	2	22%	56%	44%
1 BRATOEV G.	0	0%	0	-	0	-	0	-	-	-

K1-Attacks after R#+

Base	Σ	Σ %	=	= %	#	# %	Eff
Bulgaria	22	100%	1	5%	18	82%	77%
18 NIKOLOV	7	32%	1	14%	5	71%	57%
19 SOKOLOV	6	27%	0	0%	6	100%	100%
15 ALEKSIEV	5	23%	0	0%	3	60%	60%
8 SKRIMOV	2	9%	0	0%	2	100%	100%
12 YOSIFOV	2	9%	0	0%	2	100%	100%
1 BRATOEV G.	0	0%	0	-	0	-	-
3 ZHEKOV	0	0%	0	-	0	-	-

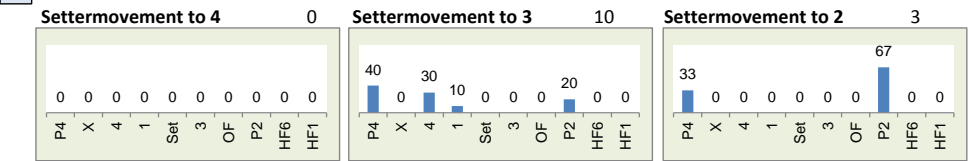
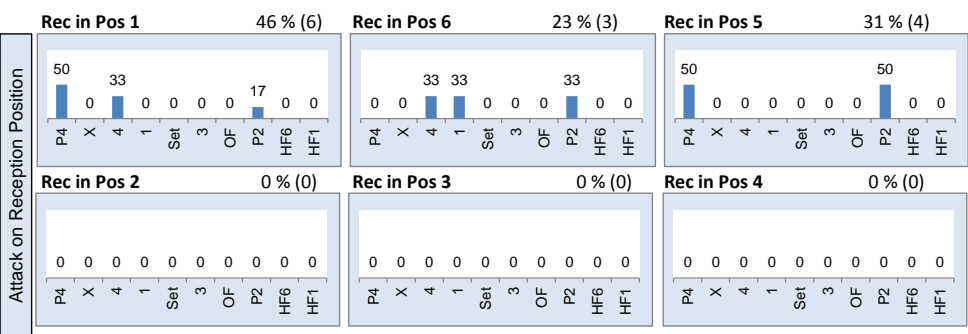
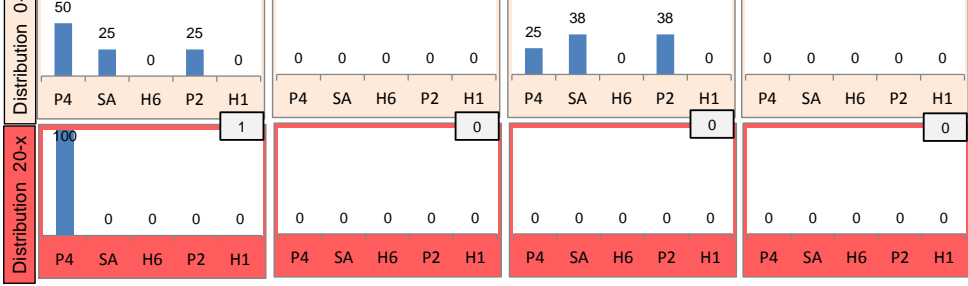
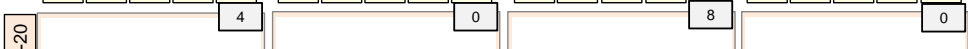
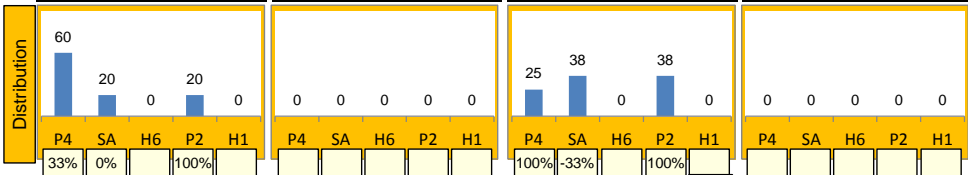
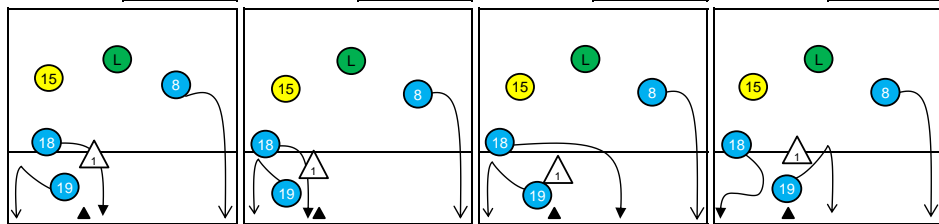
K2-Attacks - Transition

Base	Σ	Σ %	=	= %	#	# %	Eff
Bulgaria	30	100%	2	7%	19	63%	53%
19 SOKOLOV	13	43%	2	15%	7	54%	31%
15 ALEKSIEV	11	37%	0	0%	6	55%	55%
18 NIKOLOV	3	10%	0	0%	3	100%	100%
8 SKRIMOV	2	7%	0	0%	2	100%	100%
12 YOSIFOV	1	3%	0	0%	1	100%	100%
1 BRATOEV G.	0	0%	0	-	0	-	-
3 ZHEKOV	0	0%	0	-	0	-	-

Rotation 6

Bulgaria

Base K1 38% (5) Base K2 0% (0) Base K7 62% (8) Base KD 0% (0)



Distribution

K1 after all R 36 33% 53% K1 after R#+ 13 46% 62% K2 Transition 14 14% 29%

Player	0	1	3%	0	-	0	-	0	-	0	-
Base K1	0	1	3%	0	-	0	-	0	-	0	-
Base K2	0	0	0%	0	-	0	-	0	-	0	-
Base K7	14	7	19%	14	39%	5	38%	5	36%	1	7%
Base KD	0	0	0%	0	-	0	-	0	-	0	-

Reception

Player	Σ	Σ %	=	= %	+	+ %	#	# %	+ # %	Eff
Bulgaria	44	100%	6	14%	4	9%	9	20%	30%	16%
8 SKRIMOV	13	30%	1	8%	1	8%	3	23%	31%	23%
15 ALEKSIEV	13	30%	2	15%	2	15%	2	15%	31%	15%
13 SALPAROV	10	23%	2	20%	1	10%	2	20%	30%	10%
17 PENCHEV	7	16%	1	14%	0	0%	2	29%	29%	14%
18 NIKOLOV	1	2%	0	0%	0	0%	0	0%	0%	0%

K1-Attacks after R#+

Player	Σ	Σ %	=	= %	#	# %	Eff
Bulgaria	13	100%	1	8%	8	62%	46%
8 SKRIMOV	5	38%	0	0%	3	60%	60%
19 SOKOLOV	4	31%	0	0%	4	100%	100%
12 YOSIFOV	3	23%	1	33%	1	33%	0%
18 NIKOLOV	1	8%	0	0%	0	0%	-100%
1 BRATOEV G.	0	0%	0	-	0	-	-
3 ZHEKOV	0	0%	0	-	0	-	-
4 BOZHILOV	0	0%	0	-	0	-	-

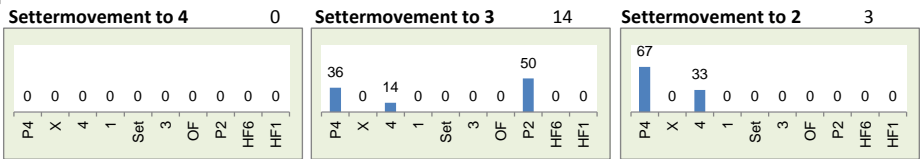
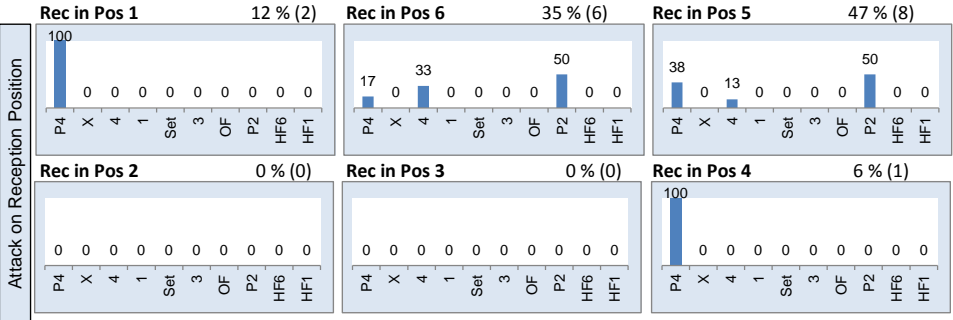
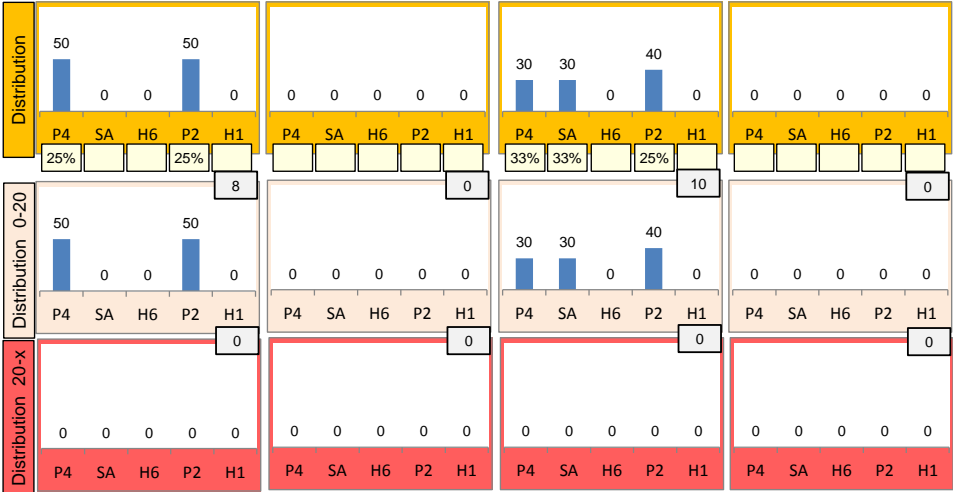
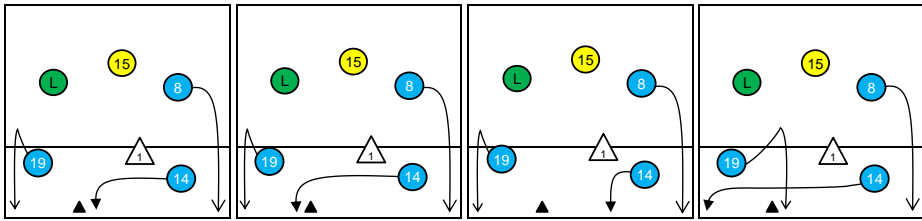
K2-Attacks - Transition

Player	Σ	Σ %	=	= %	#	# %	Eff
Bulgaria	14	100%	1	7%	4	29%	14%
8 SKRIMOV	6	43%	0	0%	1	17%	0%
19 SOKOLOV	6	43%	1	17%	2	33%	17%
17 PENCHEV	1	7%	0	0%	1	100%	100%
18 NIKOLOV	1	7%	0	0%	0	0%	0%
1 BRATOEV G.	0	0%	0	-	0	-	-
3 ZHEKOV	0	0%	0	-	0	-	-
4 BOZHILOV	0	0%	0	-	0	-	-

Rotation 5

Bulgaria

Base K1 44% (8) Base K2 0% (0) Base K7 56% (10) Base KD 0% (0)



Distribution

K1 after all R 38 37% 50% K1 after R#+ 17 29% 41% K2 Transition 15 7% 33%

	0	-	0	-	0	-	0	-	0	-	0	-	2	13%	0	-		
	-	-	-	-	-	-	-	-	-	-	-	-	-	50%	50%	-	-	
	20	53%	3	8%	15	39%	7	41%	3	18%	7	41%	4	27%	2	13%		
	35%	50%	33%	33%	40%	53%	29%	43%	33%	33%	29%	43%	-29%	29%	25%	25%	50%	50%

Reception	Σ	Σ %	=	= %	+	+ %	#	# %	+ # %	Eff
Bulgaria	42	100%	3	7%	5	12%	12	29%	40%	33%
#####	#####	#REF!	#####	#REF!	#####	#REF!	#REF!	#####	#REF!	#REF!
8 SKRIMOV	15	36%	1	7%	0	0%	7	47%	47%	40%
15 ALEKSIEV	13	31%	2	15%	2	15%	1	8%	23%	8%
13 SALPAROV	9	21%	0	0%	1	11%	2	22%	33%	33%
17 PENCHEV	4	10%	0	0%	2	50%	1	25%	75%	75%
18 NIKOLOV	1	2%	0	0%	0	0%	1	100%	100%	100%

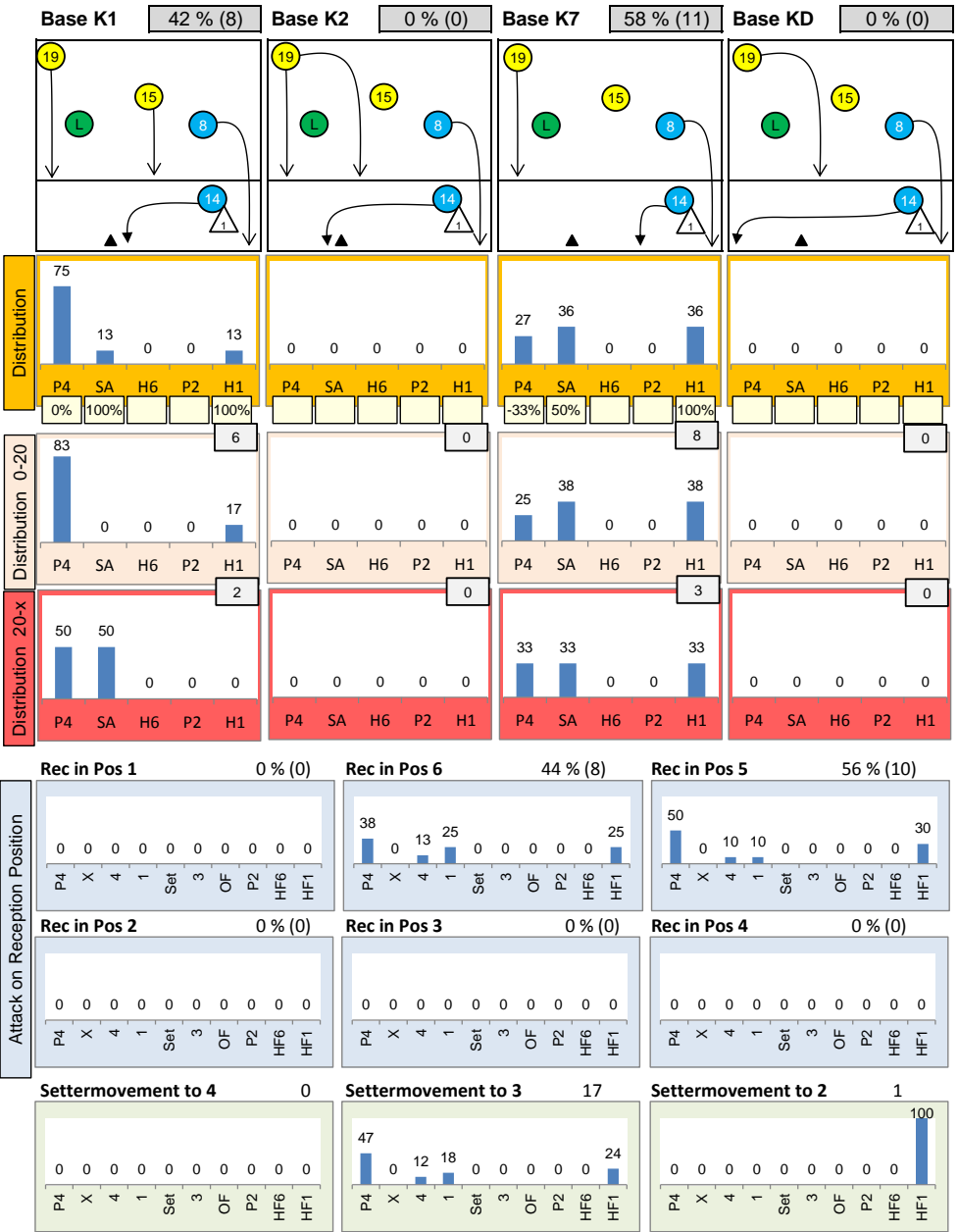
K1-Attacks after R#+	Σ	Σ %	=	= %	#	# %	Eff
Bulgaria	17	100%	1	6%	7	41%	29%
19 SOKOLOV	7	41%	0	0%	3	43%	29%
8 SKRIMOV	4	24%	0	0%	3	75%	75%
17 PENCHEV	3	18%	1	33%	0	0%	-33%
12 YOSIFOV	1	6%	0	0%	0	0%	0%
14 TODOROV	1	6%	0	0%	0	0%	0%
18 NIKOLOV	1	6%	0	0%	1	100%	100%
1 BRATOEV G.	0	0%	0	-	0	-	-

K2-Attacks - Transition	Σ	Σ %	=	= %	#	# %	Eff
Bulgaria	15	100%	2	13%	5	33%	7%
19 SOKOLOV	7	47%	2	29%	2	29%	-29%
8 SKRIMOV	2	13%	0	0%	1	50%	50%
12 YOSIFOV	2	13%	0	0%	1	50%	50%
14 TODOROV	2	13%	0	0%	0	0%	0%
15 ALEKSIEV	2	13%	0	0%	1	50%	50%
1 BRATOEV G.	0	0%	0	-	0	-	-
3 ZHEKOV	0	0%	0	-	0	-	-

Rotation 4

Bulgaria

Distribution



K1 after all R 44 30% 52% **K1 after R#+** 18 39% 56% **K2 Transition** 20 25% 50%

Base	Count	%	Count	%	Count	%
Base K1	20	45%	0	-	0	-
Base K2	50%	65%	-	-	-	-
Base K7	0	-	7	16%	17	39%
Base KD	-	-	43%	57%	0%	35%
Base K1	5	28%	0	-	0	-
Base K2	100%	100%	-	-	-	-
Base K7	0	-	5	28%	8	44%
Base KD	-	-	60%	60%	-12%	25%
Base K1	11	55%	3	15%	1	5%
Base K2	18%	45%	0%	33%	0%	0%
Base K7	0	-	0	-	5	25%
Base KD	-	-	-	-	60%	80%

Reception

	Σ	Σ %	=	= %	+	+ %	#	# %	+ # %	Eff
Bulgaria	47	100%	1	2%	5	11%	13	28%	38%	36%
####	####	#REF!	####	#REF!	####	#REF!	#REF!	####	#REF!	#REF!
15 ALEKSIEV	22	47%	1	5%	4	18%	6	27%	45%	41%
8 SKRIMOV	13	28%	0	0%	0	0%	4	31%	31%	31%
17 PENCHEV	8	17%	0	0%	1	13%	3	38%	50%	50%
13 SALPAROV	3	6%	0	0%	0	0%	0	0%	0%	0%
12 YOSIFOV	1	2%	0	0%	0	0%	0	0%	0%	0%

K1-Attacks after R#+

	Σ	Σ %	=	= %	#	# %	Eff
Bulgaria	18	100%	3	17%	10	56%	39%
8 SKRIMOV	5	28%	2	40%	1	20%	-20%
19 SOKOLOV	5	28%	0	0%	5	100%	100%
14 TODOROV	3	17%	0	0%	2	67%	67%
17 PENCHEV	3	17%	1	33%	1	33%	0%
12 YOSIFOV	2	11%	0	0%	1	50%	50%
1 BRATOEV G.	0	0%	0	-	0	-	-
3 ZHEKOV	0	0%	0	-	0	-	-

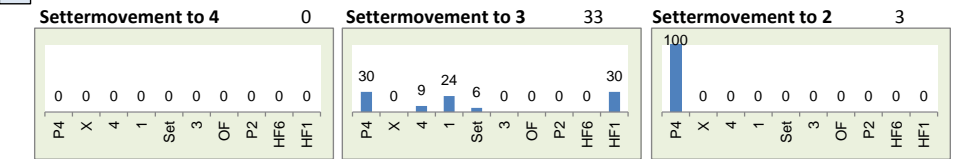
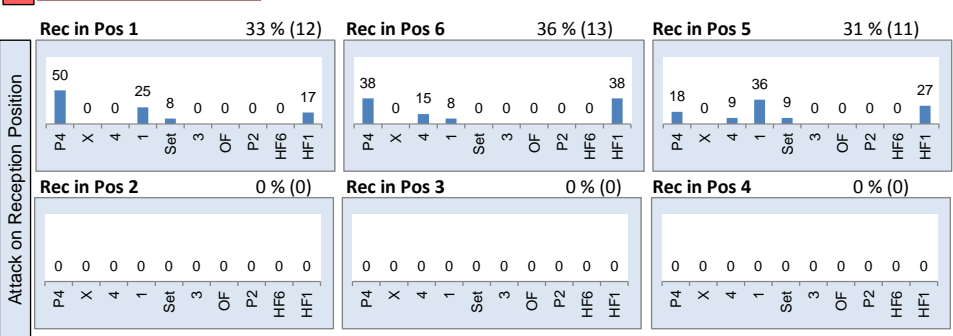
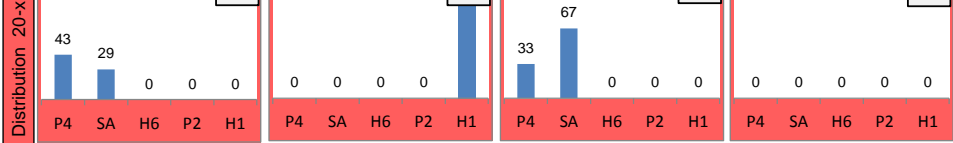
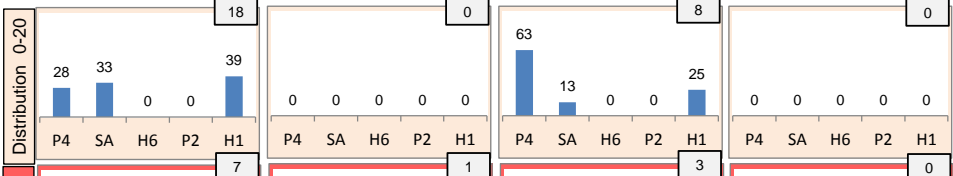
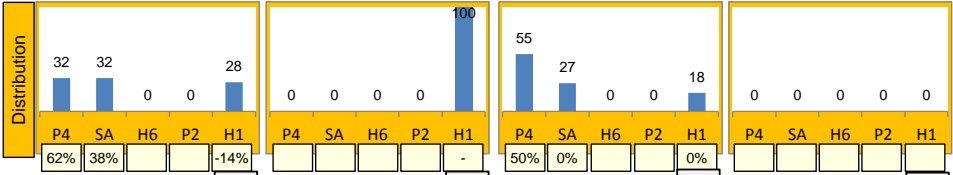
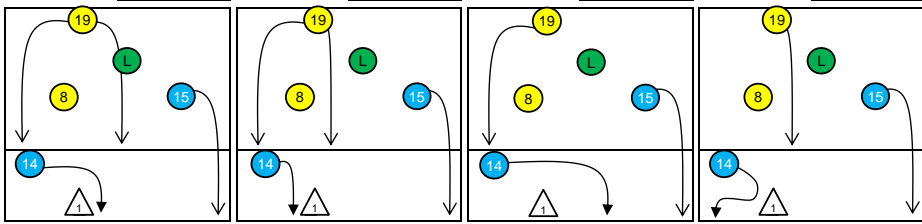
K2-Attacks - Transition

	Σ	Σ %	=	= %	#	# %	Eff
Bulgaria	20	100%	3	15%	10	50%	25%
19 SOKOLOV	12	60%	2	17%	5	42%	8%
8 SKRIMOV	4	20%	1	25%	3	75%	50%
15 ALEKSIEV	2	10%	0	0%	1	50%	50%
1 BRATOEV G.	1	5%	0	0%	0	0%	0%
17 PENCHEV	1	5%	0	0%	1	100%	100%
3 ZHEKOV	0	0%	0	-	0	-	-
4 BOZHILOV	0	0%	0	-	0	-	-

Rotation 3

Bulgaria

Base K1 68 % (25) Base K2 3 % (1) Base K7 30 % (11) Base KD 0 % (0)



Distribution

K1 after all R 45 22% 51% K1 after R#+ 34 26% 56% K2 Transition 25 20% 36%

K1 after all R					K1 after R#+					K2 Transition							
15	33%	0	-	0	-	10	29%	0	-	0	-	6	24%	0	-	0	-
7%	47%	-	-	-	-	-20%	40%	-	-	-	-	17%	50%	-	-	-	-
0	-	12	27%	18	40%	0	-	11	32%	13	38%	0	-	2	8%	17	68%
-	-	25%	42%	33%	61%	-	-	27%	45%	62%	77%	-	-	100%	100%	12%	24%

Reception	Σ	Σ %	=/	=/ %	+	+ %	#	# %	+ # %	Eff
Bulgaria	52	100%	1	2%	15	29%	21	40%	69%	67%
#####	#####	#REF!	#####	#REF!	#####	#REF!	#REF!	#REF!	#REF!	#REF!
13 SALPAROV	18	35%	1	6%	9	50%	4	22%	72%	67%
8 SKRIMOV	17	33%	0	0%	2	12%	10	59%	71%	71%
15 ALEKSIEV	11	21%	0	0%	2	18%	5	45%	64%	64%
17 PENCHEV	5	10%	0	0%	2	40%	2	40%	80%	80%
1 BRATOEV G.	1	2%	0	0%	0	0%	0	0%	0%	0%

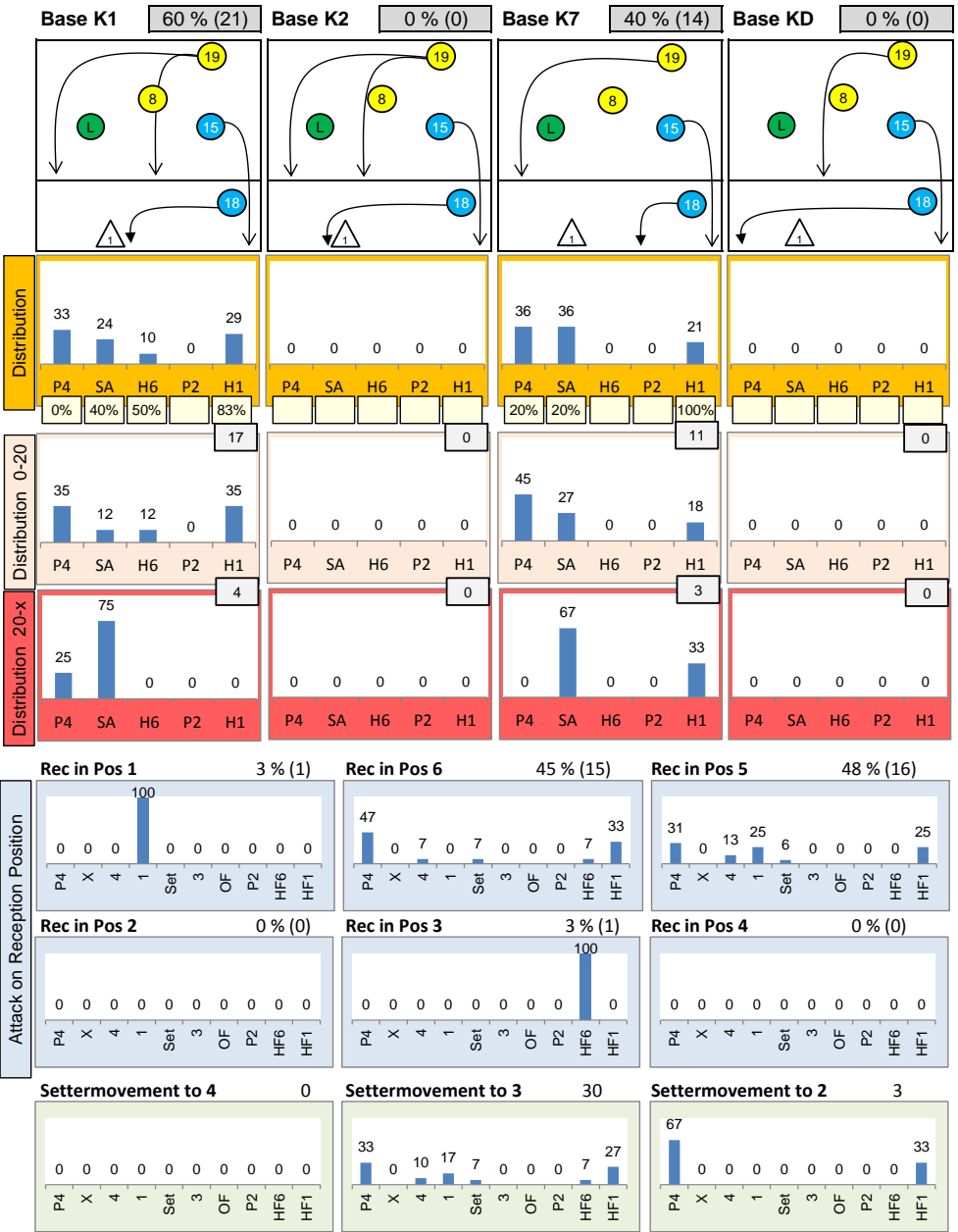
K1-Attacks after R#+	Σ	Σ %	=	= %	#	# %	Eff
Bulgaria	34	100%	3	9%	19	56%	26%
15 ALEKSIEV	11	32%	0	0%	9	82%	73%
19 SOKOLOV	10	29%	1	10%	4	40%	-20%
12 YOSIFOV	5	15%	1	20%	2	40%	0%
18 NIKOLOV	4	12%	0	0%	2	50%	50%
8 SKRIMOV	2	6%	1	50%	1	50%	0%
14 TODOROV	2	6%	0	0%	1	50%	50%
1 BRATOEV G.	0	0%	0	-	0	-	-

K2-Attacks - Transition	Σ	Σ %	=	= %	#	# %	Eff
Bulgaria	25	100%	2	8%	9	36%	20%
15 ALEKSIEV	15	60%	0	0%	3	20%	7%
19 SOKOLOV	6	24%	2	33%	3	50%	17%
8 SKRIMOV	2	8%	0	0%	1	50%	50%
18 NIKOLOV	2	8%	0	0%	2	100%	100%
1 BRATOEV G.	0	0%	0	-	0	-	-
3 ZHEKOV	0	0%	0	-	0	-	-
4 BOZHILOV	0	0%	0	-	0	-	-

Rotation 2

Bulgaria

Distribution



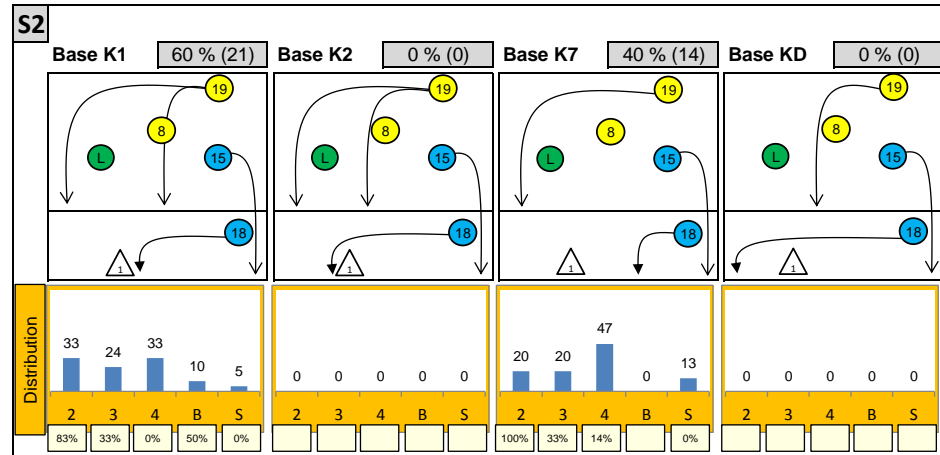
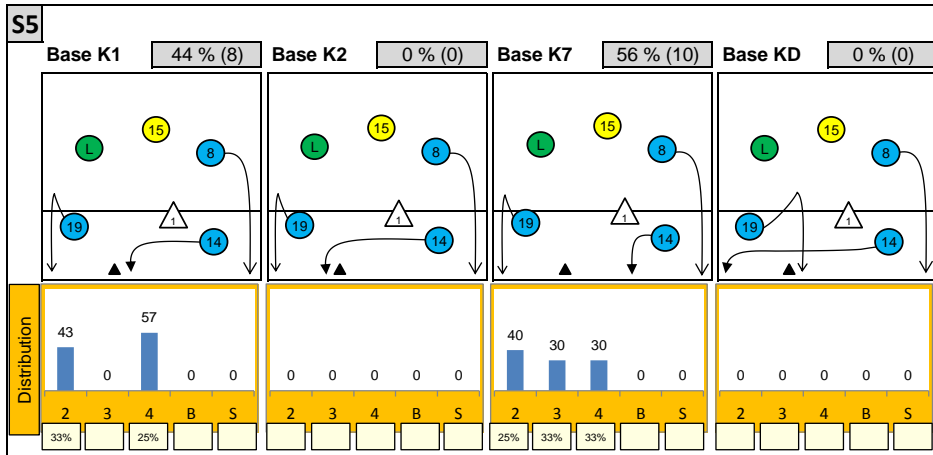
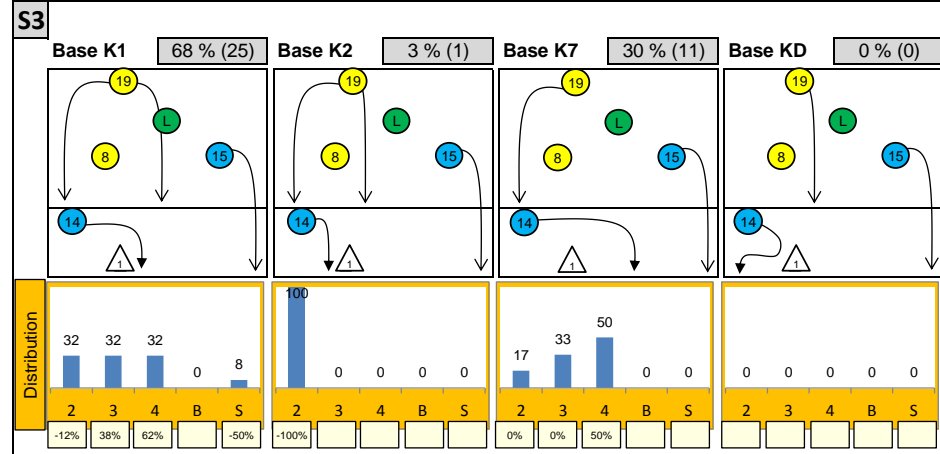
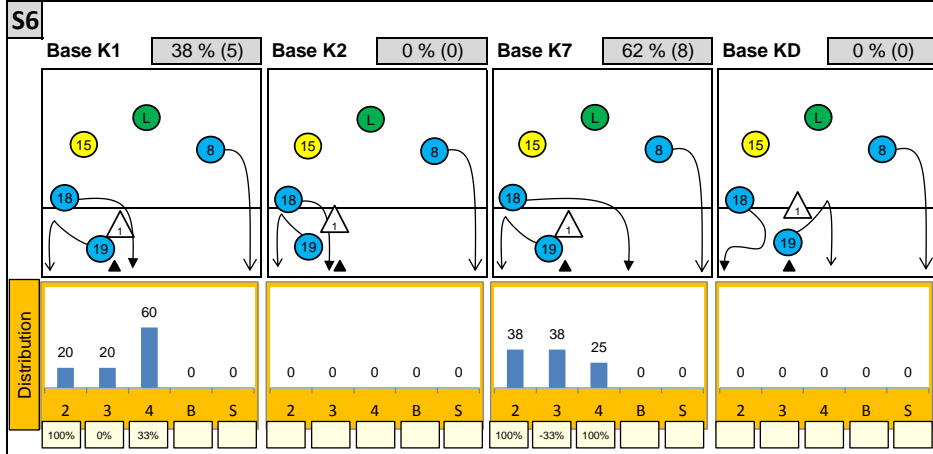
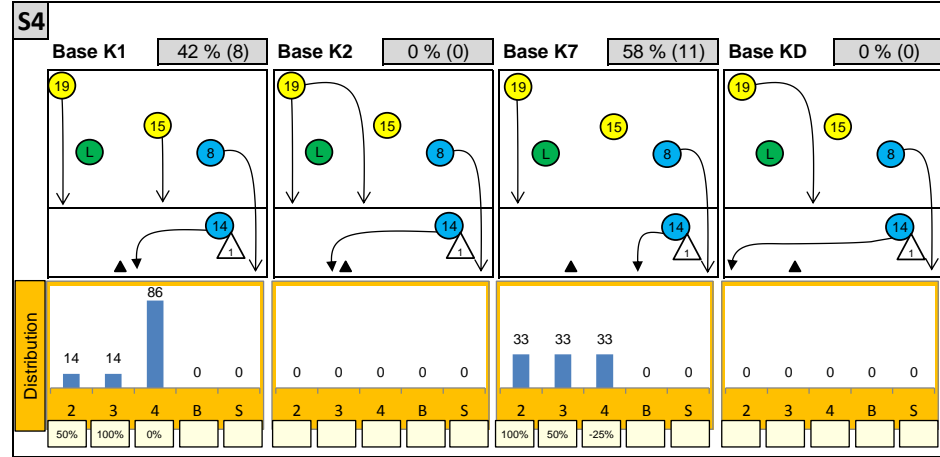
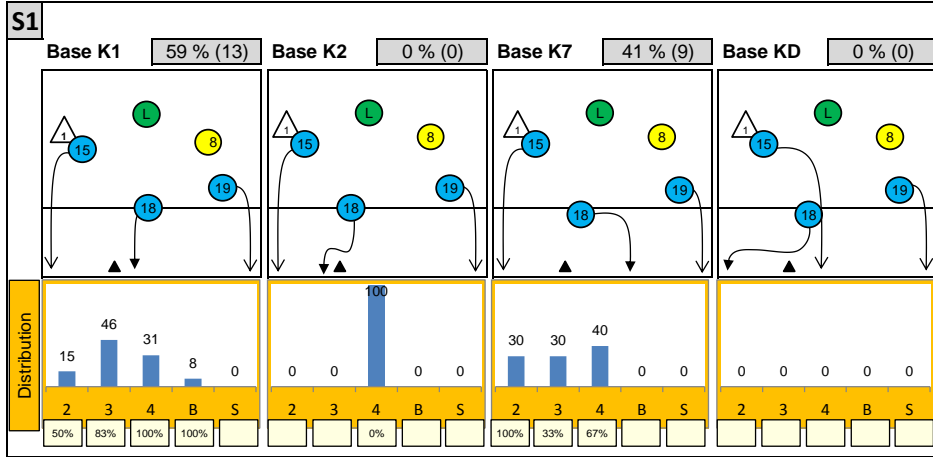
K1 after all R						K1 after R#+						K2 Transition					
49		35%		47%		31		42%		55%		28		36%		54%	
14	29%	2	4%	1	2%	9	29%	2	6%	0	-	6	21%	1	4%	1	4%
64%	71%	50%	50%	0%	0%	89%	89%	50%	50%	-	-	67%	83%	100%	100%	0%	0%
0	-	9	18%	23	47%	0	-	8	26%	12	39%	0	-	4	14%	16	57%
-	-	44%	44%	13%	35%	-	-	38%	38%	8%	42%	-	-	25%	25%	25%	50%

Reception	Σ	Σ %	=	= %	+	+ %	#	# %	+ # %	Eff
Bulgaria	57	100%	3	5%	13	23%	20	35%	58%	53%
8 SKRIMOV	33	58%	2	6%	10	30%	9	27%	58%	52%
15 ALEKSIEV	12	21%	1	8%	1	8%	7	58%	67%	58%
13 SALPAROV	8	14%	0	0%	1	13%	3	38%	50%	50%
17 PENCHEV	4	7%	0	0%	1	25%	1	25%	50%	50%
1 BRATOEV G.	0	0%	0	-	0	-	0	-	-	-

K1-Attacks after R#+	Σ	Σ %	=	= %	#	# %	Eff
Bulgaria	31	100%	2	6%	17	55%	42%
15 ALEKSIEV	10	32%	2	20%	5	50%	20%
19 SOKOLOV	9	29%	0	0%	8	89%	89%
12 YOSIFOV	4	13%	0	0%	2	50%	50%
18 NIKOLOV	4	13%	0	0%	1	25%	25%
8 SKRIMOV	3	10%	0	0%	1	33%	0%
17 PENCHEV	1	3%	0	0%	0	0%	0%
1 BRATOEV G.	0	0%	0	-	0	-	-

K2-Attacks - Transition	Σ	Σ %	=	= %	#	# %	Eff
Bulgaria	28	100%	1	4%	15	54%	36%
15 ALEKSIEV	16	57%	0	0%	8	50%	25%
19 SOKOLOV	7	25%	1	14%	6	86%	71%
18 NIKOLOV	5	18%	0	0%	1	20%	20%
1 BRATOEV G.	0	0%	0	-	0	-	-
3 ZHEKOV	0	0%	0	-	0	-	-
4 BOZHILOV	0	0%	0	-	0	-	-
5 GOTSEV	0	0%	0	-	0	-	-

Attackdistribution depending on Settercalls - Bulgaria



2: Attack of Opposite

3: Attack of Middleblocker

4: Attack of Outside

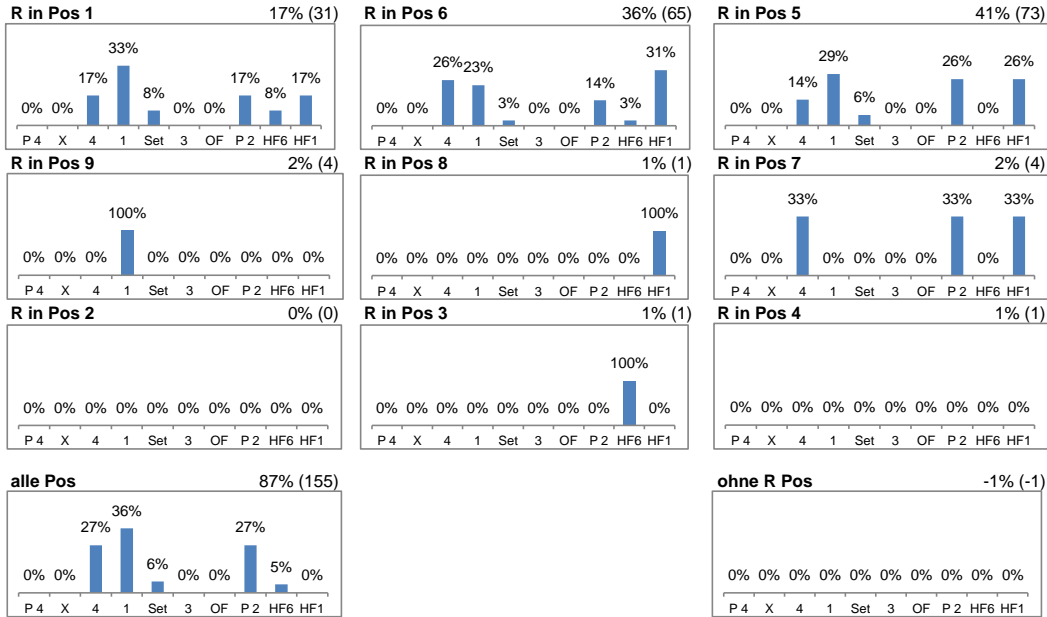
B: Attack of Backrow

S: Attack of Setter

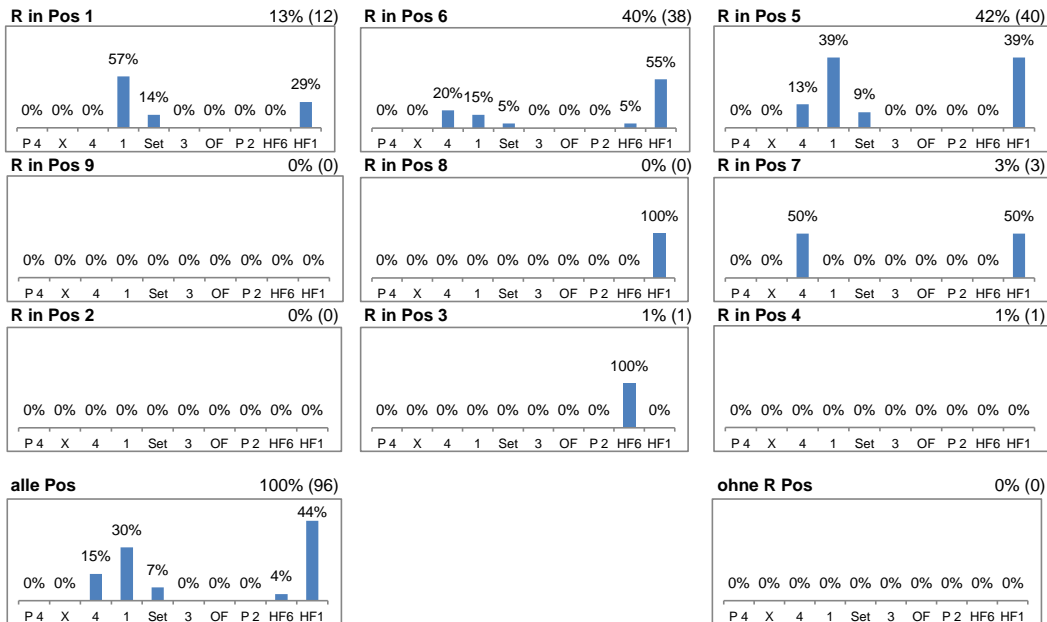
xx%: Efficiency of Attacks (-100% to +100%)

Attacks depending on Reception Position - Bulgaria

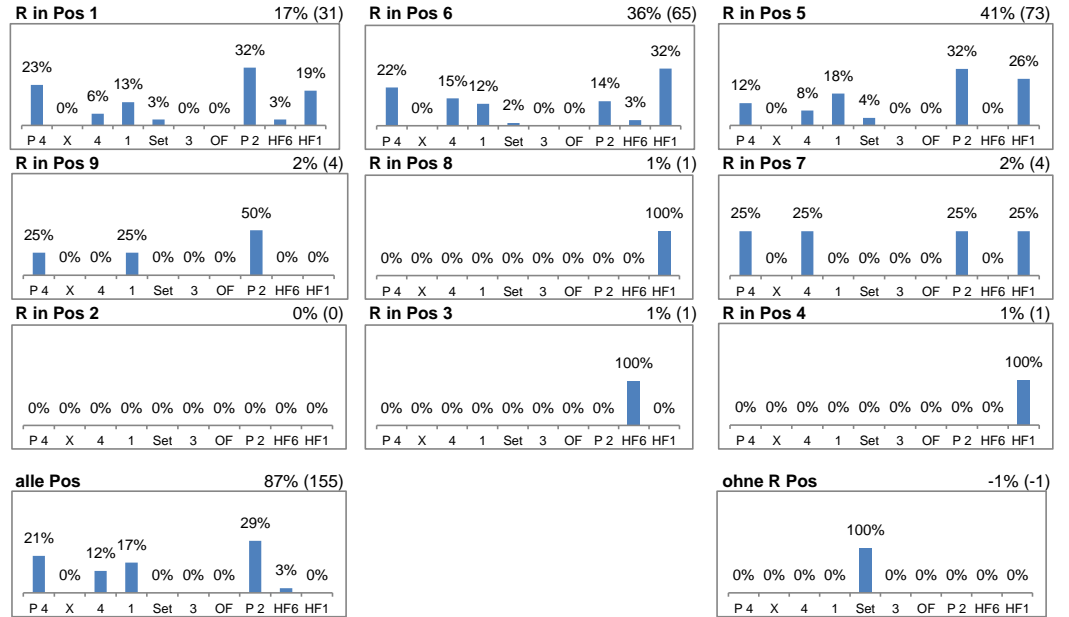
Setter back (S1, S6, S5) - R#+



Setter front (S4, S3, S2) - R#+



Setter back (S1, S6, S5) - all Receptions



Setter front (S4, S3, S2) - all Receptions

