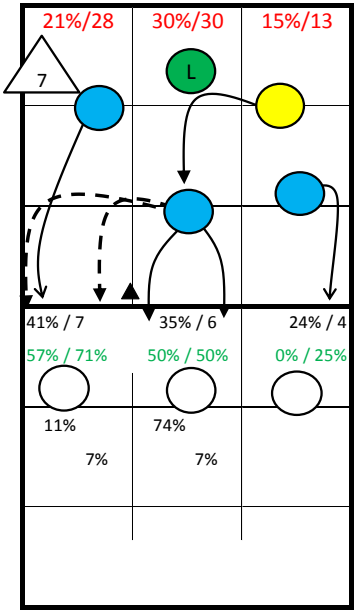


Roster

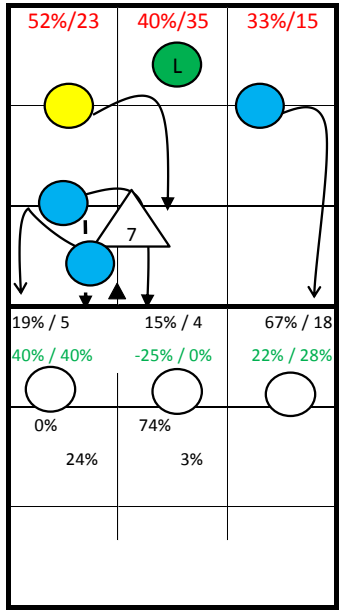
2 SENOGLU	Out
5 BAYAZIT	Out
6 SAHIN	Out
7 GULUBAY	Set
8 GUVELI	MB
10 KARAHAN	Set
11 AKYALDIZ	Out
13 MEMIS	Lib
14 ERDEM	MB
16 OZEL	Out
17 YUZGENC	Out
18 GUNES	MB

TURKEY 98'

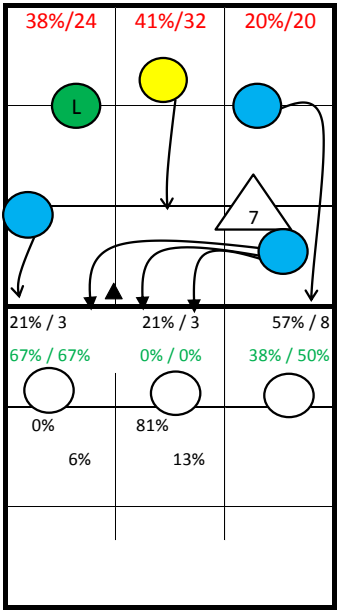
7: Jumpfloat at Position 1



S1



S6

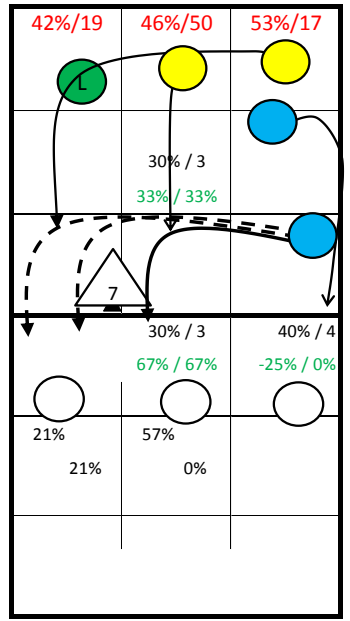


S5

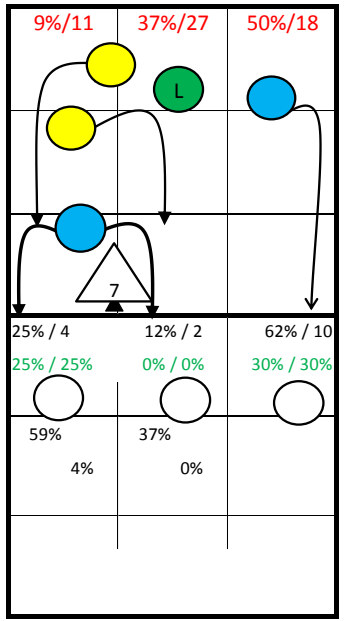
S1
S6
S5

Starting Lineup:

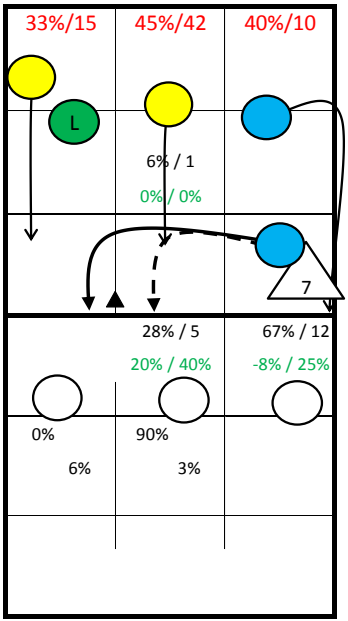
7	0	0
	L: 0	
0	0	0



S2



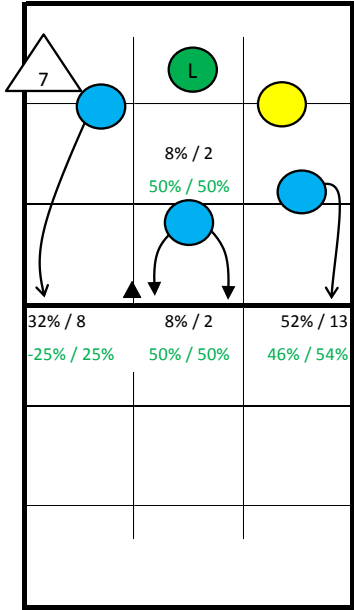
S3



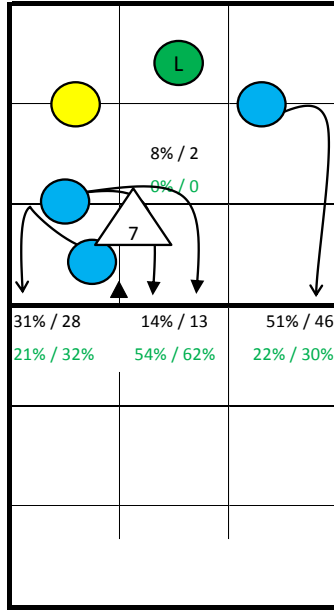
S4

S4
S3
S2

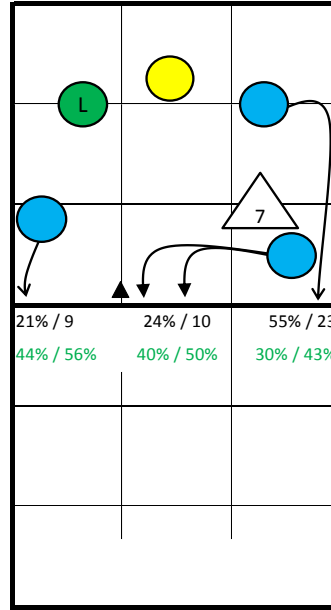
TURKEY 98' -



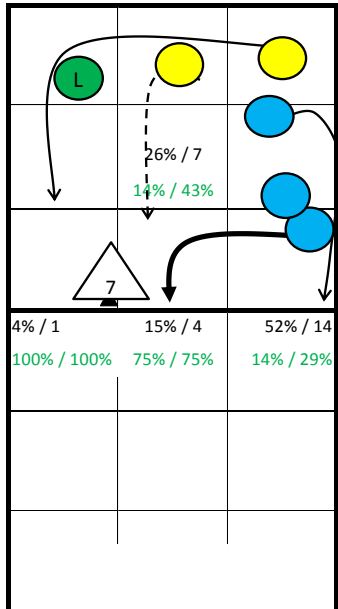
S1



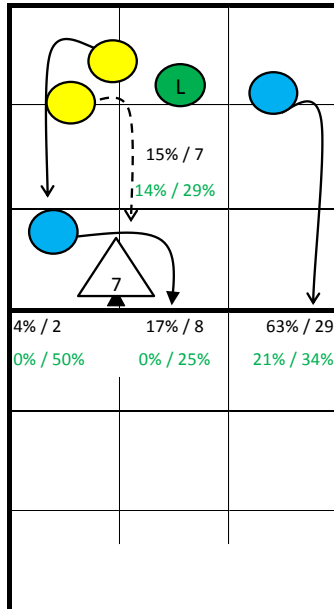
S6



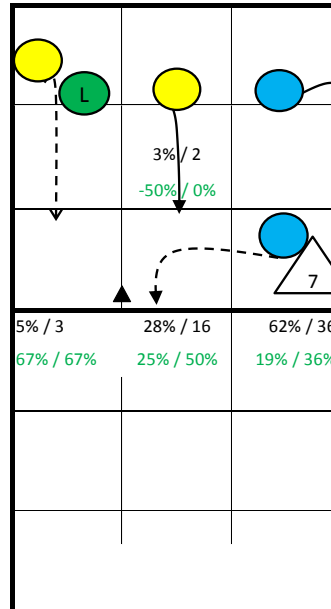
S5



S2



S3



S4

Notes:

TURKEY 98' - all Statistics

pld	Points					Serve								Reception										Attack											
	Set	pts	P/s	easy=	all=	W-L	Σ	=	-	+	#	=%	#%	eff%	Σ	in %	=	/	-	+	#	=/%	+#%	#%	eff%	Σ	in %	=	/	!	+	#	=/%	#%	eff%
TURKEY 98'	26	449	17,3	163	444	5	600	70	167	299	64	12%	11%	49%	499		73	11	234	71	110	17%	36%	22%	19%	831		66	55	52	173	298	15%	36%	21%
2 SENOGLU	22	64	2,9	29	71	-7	101	17	21	46	17	17%	17%	46%	125	25%	14	4	63	23	21	14%	35%	17%	21%	131	16%	9	8	7	30	42	13%	32%	19%
5 BAYAZIT	10	0		3	4	-4	11	3	5	3	0	27%	0%	0%	2	0%	1	0	0	1	0	50%	50%	0%	0%	0									
6 SAHIN	13	26	2,0	8	21	5	22	2	4	16	0	9%	0%	64%	2	0%	0	1	1	0	0	50%	0%	0%	-50%	56	7%	6	5	7	11	19	20%	34%	14%
7 GULUBAY	18	12	0,7	13	22	-10	41	8	10	19	4	20%	10%	37%	0											9	1%	0	0	0	4	5	0%	56%	56%
8 GUVELI	7	11	1,6	4	7	4	9	3	1	4	1	33%	11%	22%	1	0%	1	0	0	0	0	100%	0%	0%	-100%	10	1%	0	0	0	2	6	0%	60%	60%
10 KARAHAN	14	10	0,7	16	28	-18	45	3	14	23	5	7%	11%	56%	2	0%	0	0	2	0	0	0%	0%	0%	0%	7	1%	3	0	1	1	0	43%	0%	-43%
11 AKYALDIZ	18	27	1,5	14	39	-12	44	6	15	20	3	14%	7%	39%	79	16%	19	1	33	12	14	25%	33%	18%	8%	68	8%	7	2	5	9	22	13%	32%	19%
13 MEMIS	26	0			36	-36	0							164	33%	19	3	75	16	51		13%	41%	31%	27%	0									
14 ERDEM	25	39	1,6	11	22	17	96	7	26	53	10	7%	10%	58%	1	0%	1	0	0	0	0	100%	0%	0%	-100%	43	5%	3	2	3	9	19	12%	44%	33%
16 OZEL	23	74	3,2	19	66	8	109	6	31	57	15	6%	14%	61%	70	14%	8	1	32	12	17	13%	41%	24%	29%	130	16%	11	15	5	23	53	20%	41%	21%
17 YUZGENC	24	118	4,9	21	63	55	74	3	28	38	5	4%	7%	54%	52	10%	10	1	28	7	6	21%	25%	12%	4%	303	36%	16	18	18	73	103	11%	34%	23%
18 GUNES	25	68	2,7	25	65	3	48	12	12	20	4	25%	8%	25%	1	0%	0	0	0	0	1	0%	100%	100%	100%	74	9%	11	5	6	11	29	22%	39%	18%

	Block						Defense						Freeball					Set		
	Σ	=	+	#	#%	eff%	Σ	=	/-!	+#	+#%	eff%	Σ	err	bad	god	eff%	Σ	=	eff%
TURKEY 98'	335	100	41	87	26%	8%	395	62	144	189	48%	56%	55	2	46	7	9%	437	16	50%
2 SENOGLU	18	11	0	5	28%	-33%	74	11	28	35	47%	59%	21	1	19	1	0%	17	0	0%
5 BAYAZIT	0						3	0	3	0	0%	0%	0					1	0	0%
6 SAHIN	13	4	0	7	54%	23%	19	4	5	10	53%	63%	2	0	1	1	50%	1	0	0%
7 GULUBAY	31	7	8	3	10%	13%	33	2	19	12	36%	39%	1	0	1	0	0%	222	5	64%
8 GUVELI	14	2	3	4	29%	36%	2	0	2	0	0%	0%	0					2	1	-50%
10 KARAHAN	23	10	1	5	22%	-17%	16	3	9	4	25%	31%	3	0	2	1	33%	143	9	53%
11 AKYALDIZ	12	3	2	2	17%	8%	18	2	10	6	33%	50%	1	0	0	1	100%	1	0	0%
13 MEMIS	0						109	17	32	60	55%	59%	8	0	8	0	0%	23	0	0%
14 ERDEM	42	7	11	10	24%	33%	13	1	6	6	46%	62%	1	0	1	0	0%	5	1	0%
16 OZEL	38	16	5	6	16%	-13%	58	9	20	29	50%	55%	6	1	4	1	0%	11	0	0%
17 YUZGENC	38	8	5	10	26%	18%	34	8	6	20	59%	74%	9	0	8	1	11%	4	0	0%
18 GUNES	106	32	6	35	33%	8%	16	5	4	7	44%	50%	3	0	2	1	33%	6	0	17%

pld Set played Sets
 P/s Points per Set
 pts Points
 easy= easy errors (serve, net contact, ...)
 all= all errors
 W-L points - errors
 Σ sum of all events
 in % in percent of all team events

TURKEY 98' - Attack-Statistic

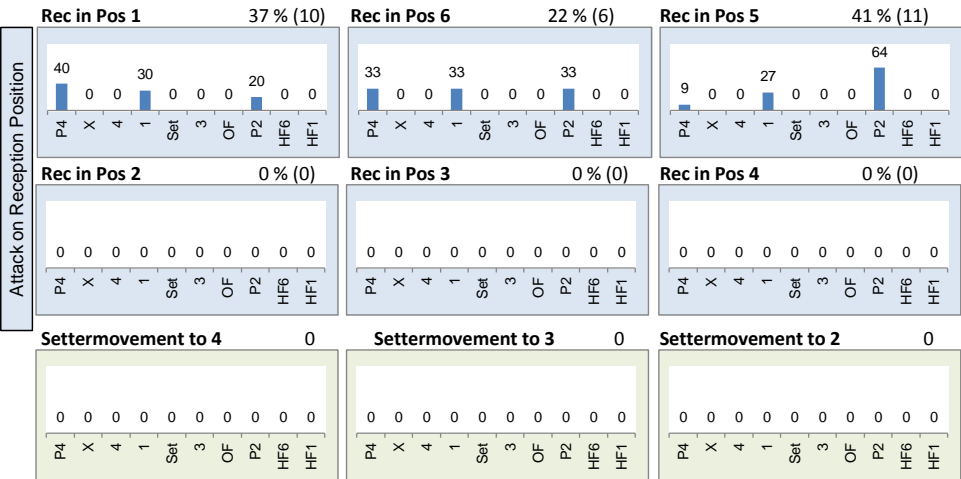
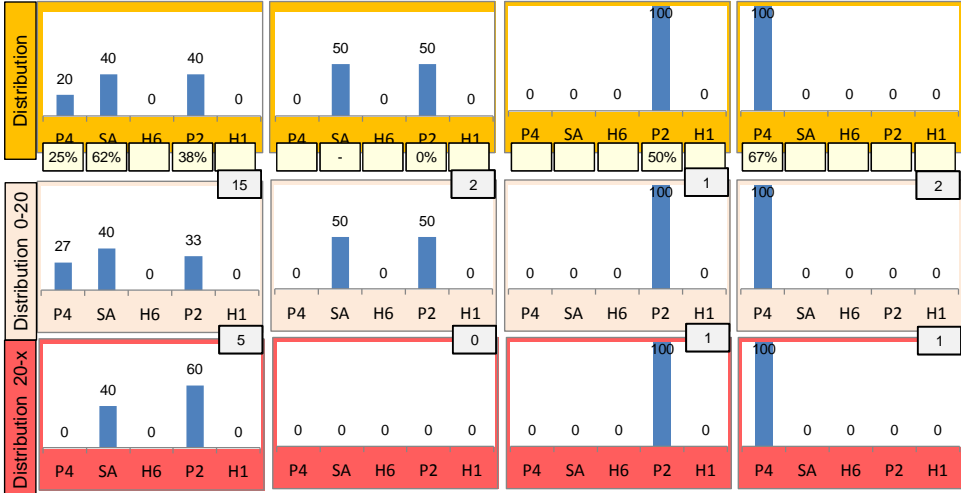
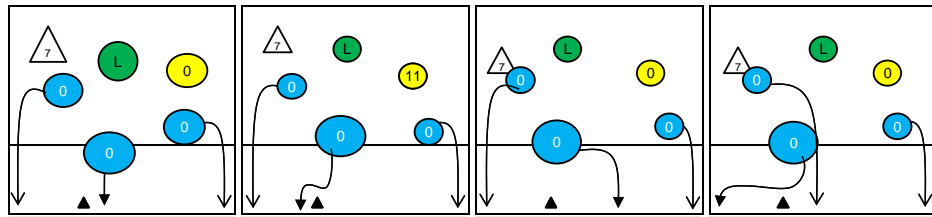
	K1 & K2 Attacks							K1 All Attacks							K2 Attacks							K1 aft R other Ply				K1 after own Rec						
	Σ	in %	=	/	#	=/%	##	eff	Σ	in %	=	/	#	=/%	##	eff	Σ	in %	=	/	#	=/%	##	eff	sum	#	##	eff	sum	#	##	eff
TURKEY 98'	775		58	55	275	15%	35%	21%	349		27	28	112	16%	32%	16%	426		31	27	163	14%	38%	25%	315	103	33%		34	9	26%	
17 YUZGENC	295	38%	15	18	99	11%	34%	22%	119	34%	6	6	34	10%	29%	18%	176	41%	9	12	65	12%	37%	25%	109	31	28%	18%	10	3	30%	20%
2 SENOGLU	129	17%	9	8	41	13%	32%	19%	60	17%	5	5	15	17%	25%	8%	69	16%	4	3	26	10%	38%	28%	46	11	24%	9%	14	4	29%	7%
16 OZEL	123	16%	11	15	48	21%	39%	18%	46	13%	4	6	20	22%	43%	22%	77	18%	7	9	28	21%	36%	16%	43	19	44%	21%	3	1	33%	33%
11 AKYALDIZ	68	9%	7	2	22	13%	32%	19%	28	8%	3	1	10	14%	36%	21%	40	9%	4	1	12	13%	30%	17%	21	9	43%	33%	7	1	14%	-14%
18 GUNES	59	8%	7	5	24	20%	41%	20%	30	9%	2	4	9	20%	30%	10%	29	7%	5	1	15	21%	52%	31%	30	9	30%	10%	0			
6 SAHIN	55	7%	6	5	19	20%	35%	15%	36	10%	5	4	10	25%	28%	3%	19	4%	1	1	9	11%	47%	37%	36	10	28%	3%	0			
14 ERDEM	37	5%	3	2	16	14%	43%	30%	22	6%	2	2	9	18%	41%	23%	15	4%	1	0	7	7%	47%	40%	22	9	41%	23%	0			
8 GUVELI	9	1%	0	0	6	0%	67%	67%	8	2%	0	0	5	0%	62%	62%	1	0%	0	0	1	0%	100%	100%	8	5	63%	62%	0			
5 BAYAZIT	0								0								0								0				0			
7 GULUBAY	0								0								0								0				0			
10 KARAHAN	0								0								0								0				0			
13 MEMIS	0								0								0								0				0			

	K1 after R#+							K1 after R-!							Freeball-Attacks									
	Σ	in %	=	/	#	=/%	##	eff	Σ	in %	=	/	#	=/%	##	eff	Σ	in %	=	/	#	=/%	##	eff
TURKEY 98'	175		10	14	68	14%	39%	25%	174		17	14	44	18%	25%	7%	66		5	4	34	14%	52%	38%
17 YUZGENC	50	29%	3	1	15	8%	30%	22%	69	40%	3	5	19	12%	28%	16%	24	240%	2	0	10	8%	42%	33%
2 SENOGLU	24	14%	3	2	9	21%	38%	17%	36	21%	2	3	6	14%	17%	3%	10	167%	0	0	6	0%	60%	60%
16 OZEL	20	11%	0	3	13	15%	65%	50%	26	15%	4	3	7	27%	27%	0%	9	180%	1	2	5	33%	56%	22%
11 AKYALDIZ	13	7%	1	1	4	15%	31%	15%	15	9%	2	0	6	13%	40%	27%	0							
18 GUNES	30	17%	2	4	9	20%	30%	10%	0								9	180%	1	1	5	22%	56%	33%
6 SAHIN	11	6%	0	1	5	9%	45%	36%	25	14%	5	3	5	32%	20%	-12%	3	150%	0	1	2	33%	67%	33%
14 ERDEM	19	11%	1	2	8	16%	42%	26%	3	2%	1	0	1	33%	33%	0%	10	200%	1	0	5	10%	50%	40%
8 GUVELI	8	5%	0	0	5	0%	62%	62%	0								1	100%	0	0	1	0%	100%	100%
5 BAYAZIT	0								0								0							
7 GULUBAY	0								0								0							
10 KARAHAN	0								0								0							
13 MEMIS	0								0								0							

Rotation 1

TURKEY 98'

Base K1 74 % (20) Base K2 7 % (2) Base K7 7 % (2) Base KD 11 % (3)



Distribution

K1 after all R 63 19% 38% K1 after R#+ 27 41% 56% K2 Transition 58 29% 43%

	1	2%	3	5%	0	-
	0%	0%	0%	0%	-	-
	23	37%	10	16%	26	41%
	22%	39%	50%	60%	8%	35%

	0	-	0	-	0	-
	-	-	-	-	-	-
	11	41%	9	33%	7	26%
	36%	55%	44%	56%	43%	57%

	0	-	3	5%	0	-
	-	-	33%	33%	-	-
	20	34%	4	7%	31	53%
	20%	40%	25%	50%	35%	45%

Reception	Σ	Σ %	=	= %	+	+ %	#	# %	+ # %	Eff
TURKEY 98'	95	100%	24	25%	8	8%	19	20%	28%	3%
13 MEMIS	30	32%	5	17%	3	10%	7	23%	33%	17%
2 SENOGLU	22	23%	3	14%	4	18%	5	23%	41%	27%
11 AKYALDIZ	15	16%	8	53%	0	0%	2	13%	13%	-40%
16 OZEL	14	15%	4	29%	1	7%	4	29%	36%	7%
17 YUZGENC	11	12%	2	18%	0	0%	1	9%	9%	-9%
6 SAHIN	2	2%	1	50%	0	0%	0	0%	0%	-50%

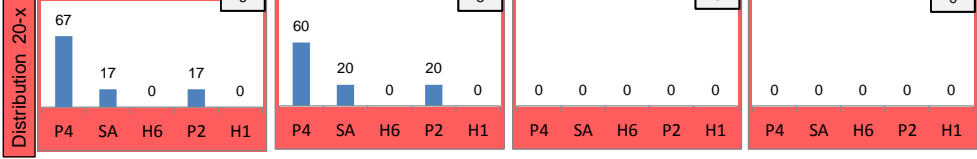
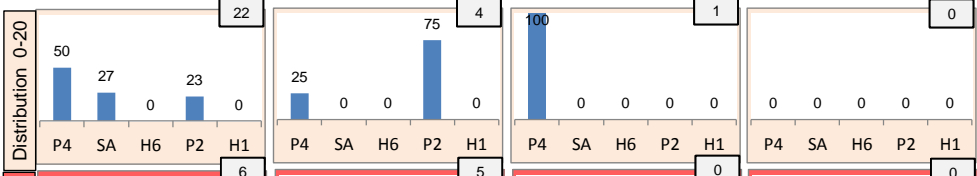
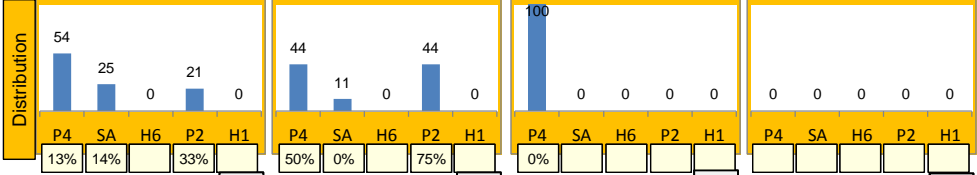
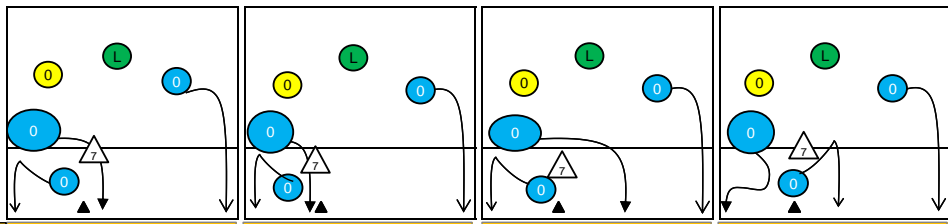
K1-Attacks after R#+	Σ	Σ %	=	= %	#	# %	Eff
TURKEY 98'	27	100%	2	7%	15	56%	41%
2 SENOGLU	6	22%	1	17%	4	67%	50%
14 ERDEM	6	22%	0	0%	3	50%	33%
16 OZEL	5	19%	0	0%	3	60%	40%
17 YUZGENC	3	11%	1	33%	0	0%	-33%
6 SAHIN	2	7%	0	0%	1	50%	50%
8 GUVELI	2	7%	0	0%	2	100%	100%
11 AKYALDIZ	2	7%	0	0%	2	100%	100%

K2-Attacks - Transitiior	Σ	Σ %	=	= %	#	# %	Eff
TURKEY 98'	58	100%	4	7%	25	43%	29%
2 SENOGLU	18	31%	0	0%	8	44%	44%
16 OZEL	14	24%	2	14%	5	36%	14%
17 YUZGENC	11	19%	0	0%	4	36%	27%
11 AKYALDIZ	6	10%	1	17%	2	33%	0%
6 SAHIN	5	9%	0	0%	4	80%	60%
14 ERDEM	2	3%	0	0%	1	50%	50%
18 GUNES	2	3%	1	50%	1	50%	0%

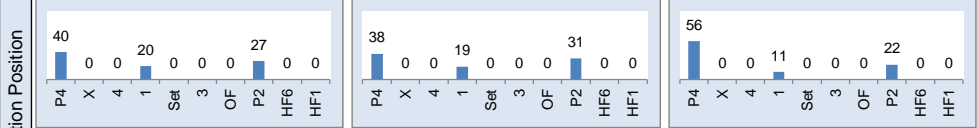
Rotation 6

TURKEY 98'

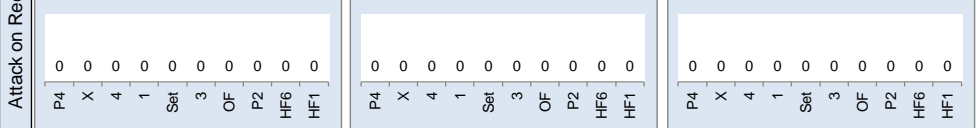
Base K1 74 % (28) Base K2 24 % (9) Base K7 3 % (1) Base KD 0 % (0)



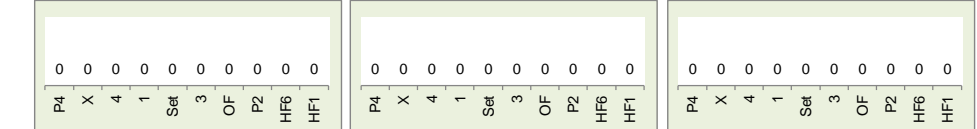
Rec in Pos 1 38 % (15) Rec in Pos 6 40 % (16) Rec in Pos 5 23 % (9)



Rec in Pos 2 0 % (0) Rec in Pos 3 0 % (0) Rec in Pos 4 0 % (0)



Settermovement to 4 0 Settermovement to 3 0 Settermovement to 2 0



Distribution

K1 after all R 76 8% 25% K1 after R#+ 40 25% 35% K2 Transition 119 20% 34%

Base	P4	SA	H6	P2	H1
K1 after all R	76	8%	25%	0	0
K1 after R#+	40	25%	35%	0	0
K2 Transition	119	20%	34%	0	0

Reception	Σ	Σ %	=/	= %	+	+ %	#	# %	+# %	Eff
TURKEY 98'	110	100%	21	19%	13	12%	27	25%	36%	17%
13 MEMIS	46	42%	8	17%	3	7%	15	33%	39%	22%
2 SENOGLU	35	32%	7	20%	6	17%	5	14%	31%	11%
11 AKYALDIZ	17	15%	3	18%	2	12%	4	24%	35%	18%
17 YUZGENC	10	9%	3	30%	2	20%	1	10%	30%	0%
16 OZEL	1	1%	0	0%	0	0%	1	100%	100%	100%
18 GUNES	1	1%	0	0%	0	0%	1	100%	100%	100%

K1-Attacks after R#+	Σ	Σ %	=	= %	#	# %	Eff
TURKEY 98'	40	100%	2	5%	14	35%	25%
17 YUZGENC	19	48%	1	5%	6	32%	26%
16 OZEL	8	20%	0	0%	5	63%	50%
14 ERDEM	7	18%	0	0%	2	29%	14%
6 SAHIN	3	8%	0	0%	1	33%	33%
2 SENOGLU	2	5%	1	50%	0	0%	-50%
8 GUVELI	1	3%	0	0%	0	0%	0%
5 BAYAZIT	0	0%	0	-	0	-	-

K2-Attacks - Transiti	Σ	Σ %	=	= %	#	# %	Eff
TURKEY 98'	119	100%	8	7%	40	34%	20%
17 YUZGENC	58	49%	2	3%	18	31%	21%
16 OZEL	38	32%	3	8%	15	39%	21%
14 ERDEM	9	8%	1	11%	4	44%	33%
6 SAHIN	7	6%	0	0%	2	29%	29%
2 SENOGLU	6	5%	1	17%	1	17%	0%
11 AKYALDIZ	1	1%	1	100%	0	0%	-100%
5 BAYAZIT	0	0%	0	-	0	-	-

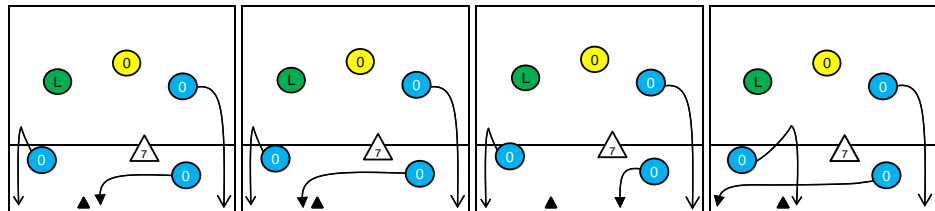
Rotation 5

TURKEY 98'

Distribution

Base K1 81% (25) Base K2 6% (2) Base K7 13% (4) Base KD 0% (0)

K1 after all R 55 40% 49% K1 after R#+ 31 42% 52% K2 Transition 61 31% 43%

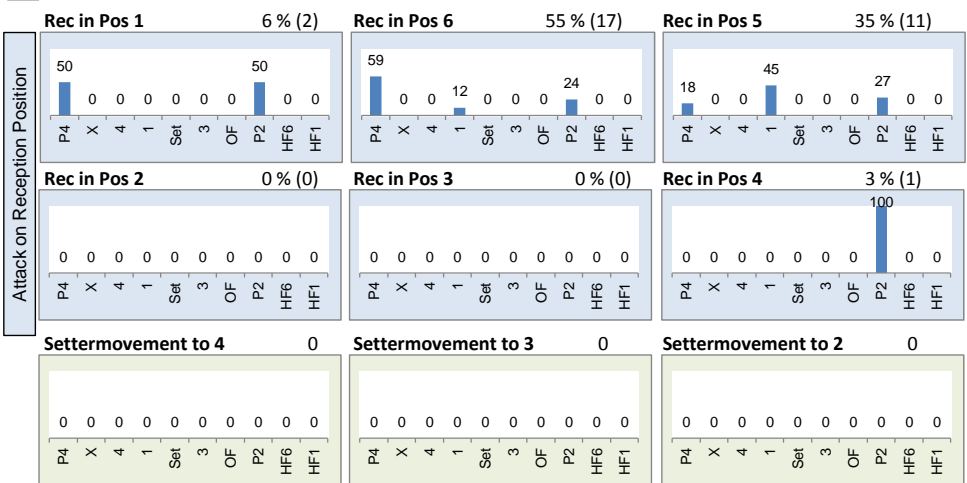


Reception	0	-	0	-	0	-	0	-	0	-	0	-
0	-	-	-	-	-	-	-	-	-	-	-	-
15	27%	8	15%	32	58%	10	32%	8	26%	13	42%	
40%	53%	38%	50%	41%	47%	50%	60%	38%	50%	38%	46%	

Reception	∑	∑%	=	=%	+	+	#	#%	+%	Eff
TURKEY 98'	70	100%	8	11%	13	19%	19	27%	46%	34%
2 SENOGLU	27	39%	2	7%	6	22%	5	19%	41%	33%
13 MEMIS	16	23%	2	13%	2	13%	9	56%	69%	56%
11 AKYALDIZ	10	14%	2	20%	1	10%	3	30%	40%	20%
17 YUZGENC	9	13%	0	0%	3	33%	0	0%	33%	33%
16 OZEL	8	11%	2	25%	1	13%	2	25%	38%	13%
5 BAYAZIT	0	0%	0	-	0	-	0	-	-	-

K1-Attacks after R#+	∑	∑%	=	=%	#	#%	Eff
TURKEY 98'	31	100%	1	3%	16	52%	42%
17 YUZGENC	11	35%	0	0%	6	55%	55%
18 GUNES	8	26%	0	0%	4	50%	38%
16 OZEL	7	23%	0	0%	5	71%	57%
6 SAHIN	3	10%	0	0%	1	33%	33%
11 AKYALDIZ	1	3%	1	100%	0	0%	-100%
14 ERDEM	1	3%	0	0%	0	0%	0%
2 SENOGLU	0	0%	0	-	0	-	-

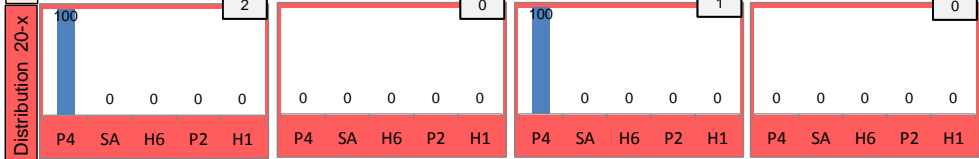
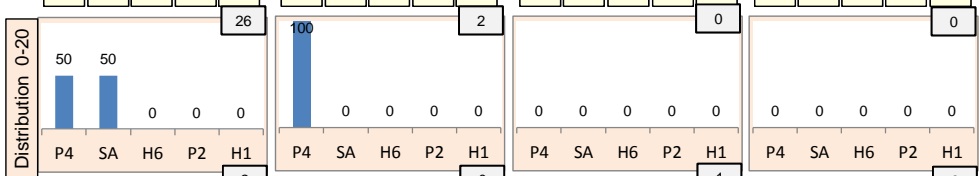
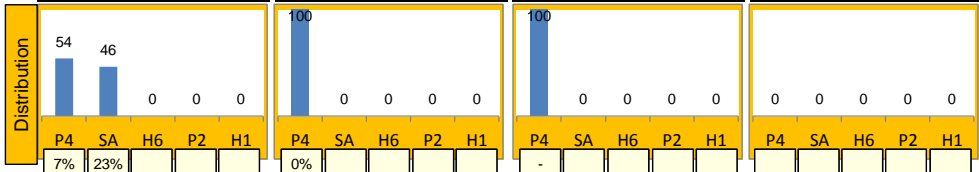
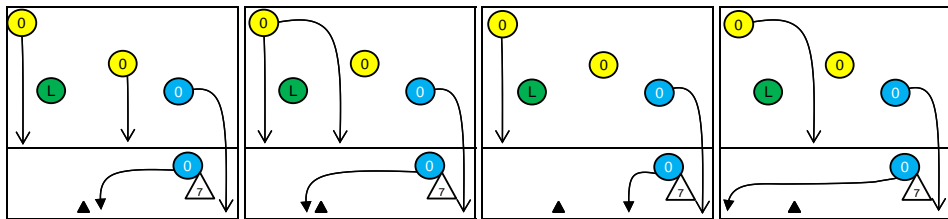
K2-Attacks - Transitor	∑	∑%	=	=%	#	#%	Eff
TURKEY 98'	61	100%	2	3%	26	43%	31%
17 YUZGENC	32	52%	2	6%	12	38%	22%
16 OZEL	19	31%	0	0%	8	42%	32%
18 GUNES	5	8%	0	0%	3	60%	60%
6 SAHIN	2	3%	0	0%	1	50%	50%
11 AKYALDIZ	2	3%	0	0%	1	50%	50%
2 SENOGLU	1	2%	0	0%	1	100%	100%
5 BAYAZIT	0	0%	0	-	0	-	-



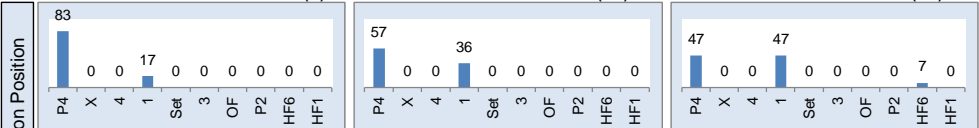
Rotation 4

TURKEY 98'

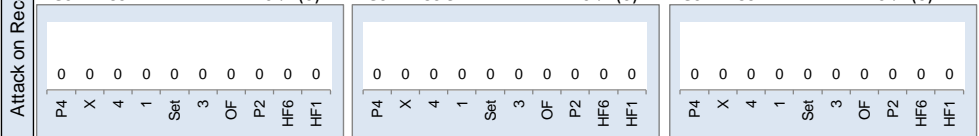
Base K1 90% (28) Base K2 6% (2) Base K7 3% (1) Base KD 0% (0)



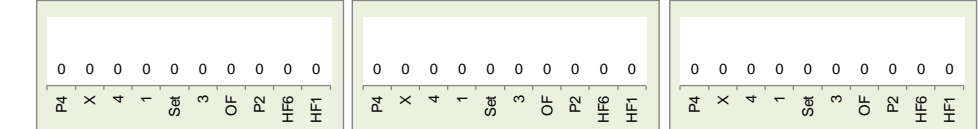
Rec in Pos 1 17% (6) Rec in Pos 6 40% (14) Rec in Pos 5 43% (15)



Rec in Pos 2 0% (0) Rec in Pos 3 0% (0) Rec in Pos 4 0% (0)



Settermovement to 4 0 Settermovement to 3 0 Settermovement to 2 0



Distribution

K1 after all R 64 6% 27% K1 after R#+ 35 9% 29% K2 Transition 88 26% 41%

Player	Count	Percentage	Player	Count	Percentage	Player	Count	Percentage									
1	2%	4	6%	0	-	0	-	1	3%	0	-	2	2%	6	7%	0	-
-100%	0%	0%	0%	-	-	-	-	0%	0%	-	-	-50%	0%	-17%	0%	-	-
0	-	13	20%	46	72%	0	-	13	37%	21	60%	4	5%	12	14%	63	72%
-	-	23%	38%	4%	26%	-	-	23%	38%	0%	24%	75%	75%	25%	50%	30%	43%

Reception	Σ	Σ %	=/	= / %	+	+ %	#	# %	+ # %	Eff
TURKEY 98'	87	100%	12	14%	16	18%	19	22%	40%	26%
13 MEMIS	29	33%	2	7%	4	14%	9	31%	45%	38%
2 SENOGLU	23	26%	5	22%	5	22%	3	13%	35%	13%
16 OZEL	13	15%	1	8%	3	23%	3	23%	46%	38%
17 YUZGENC	11	13%	4	36%	1	9%	3	27%	36%	0%
11 AKYALDIZ	9	10%	0	0%	3	33%	1	11%	44%	44%
10 KARAHAN	2	2%	0	0%	0	0%	0	0%	0%	0%

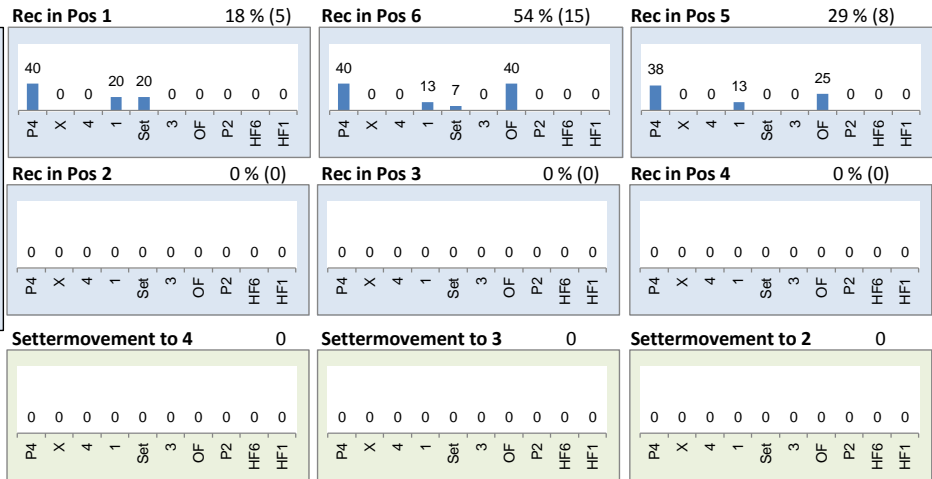
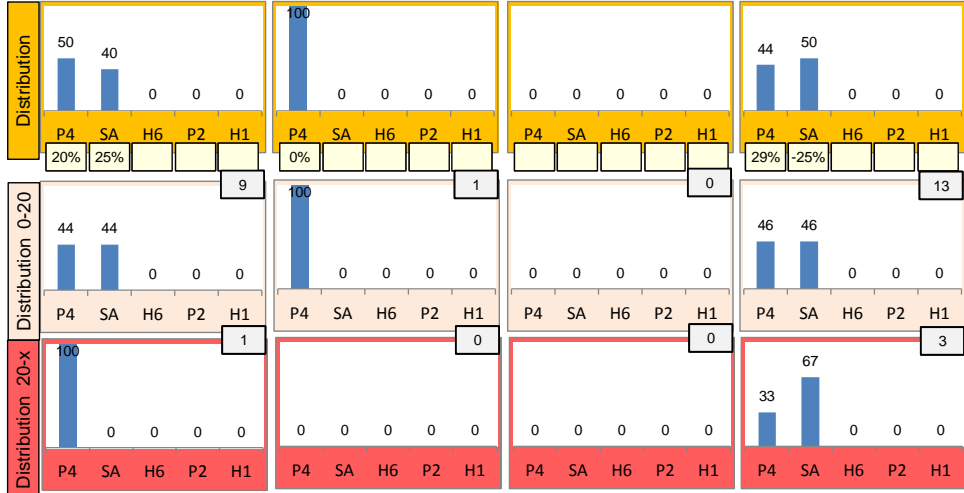
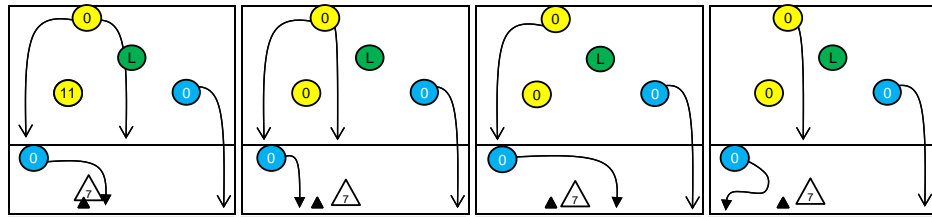
K1-Attacks after R#+	Σ	Σ %	=	= %	#	# %	Eff
TURKEY 98'	35	100%	2	6%	10	29%	9%
17 YUZGENC	14	40%	1	7%	2	14%	0%
18 GUNES	10	29%	0	0%	4	40%	20%
6 SAHIN	3	9%	0	0%	2	67%	33%
8 GUVELI	3	9%	0	0%	1	33%	33%
11 AKYALDIZ	3	9%	0	0%	0	0%	-33%
2 SENOGLU	2	6%	1	50%	1	50%	0%
5 BAYAZIT	0	0%	0	-	0	-	-

K2-Attacks - Transiti	Σ	Σ %	=	= %	#	# %	Eff
TURKEY 98'	88	100%	8	9%	36	41%	26%
17 YUZGENC	52	59%	4	8%	23	44%	31%
18 GUNES	15	17%	2	13%	8	53%	33%
11 AKYALDIZ	10	11%	0	0%	2	20%	20%
6 SAHIN	5	6%	1	20%	2	40%	20%
16 OZEL	4	5%	1	25%	0	0%	-50%
2 SENOGLU	1	1%	0	0%	0	0%	0%
8 GUVELI	1	1%	0	0%	1	100%	100%

Rotation 3

TURKEY 98'

Base K1 37% (10) Base K2 4% (1) Base K7 0% (0) Base KD 59% (16)



Distribution

K1 after all R 46 11% 24% K1 after R#+ 26 8% 23% K2 Transition 64 20% 34%

1	2%	4	9%	0	-	0	-	0	-	0	-	0	-	11	17%	0	-
0%	0%	0%	25%	-	-	-	-	-	-	-	-	-	-	18%	27%	-	-
8	17%	4	9%	29	63%	8	31%	4	15%	14	54%	5	8%	2	3%	46	72%
-25%	13%	25%	25%	21%	28%	-25%	13%	25%	25%	21%	29%	20%	60%	0%	0%	22%	35%

Reception	Σ	Σ %	=	= %	+	+ %	#	# %	+ # %	Eff
TURKEY 98'	65	100%	7	11%	9	14%	19	29%	43%	32%
13 MEMIS	32	49%	3	9%	4	13%	10	31%	44%	34%
16 OZEL	13	20%	1	8%	1	8%	5	38%	46%	38%
11 AKYALDIZ	9	14%	3	33%	1	11%	2	22%	33%	0%
2 SENOGLU	7	11%	0	0%	2	29%	1	14%	43%	43%
17 YUZGENC	3	5%	0	0%	0	0%	1	33%	33%	33%
5 BAYAZIT	1	2%	0	0%	1	100%	0	0%	100%	100%

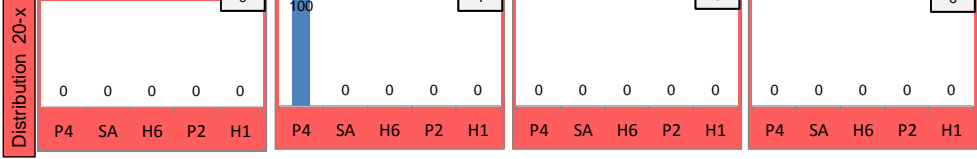
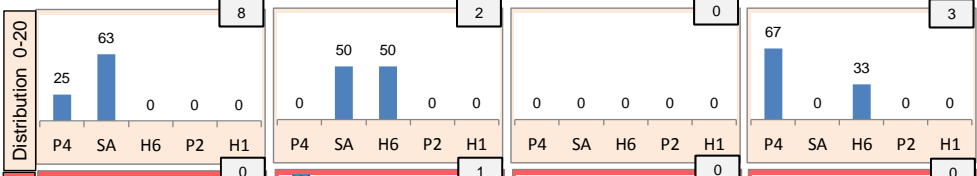
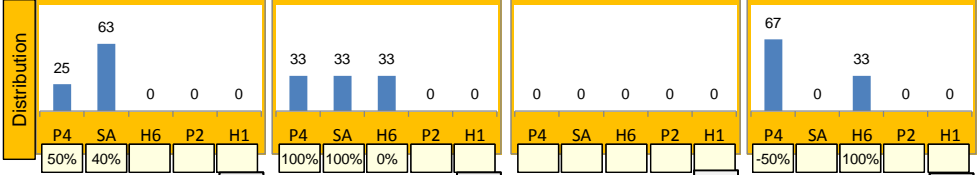
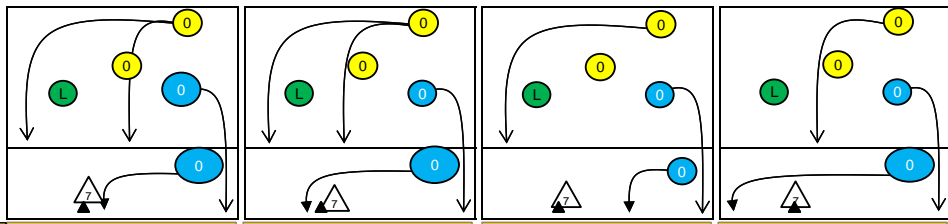
K1-Attacks after R#+	Σ	Σ %	=	= %	#	# %	Eff
TURKEY 98'	26	100%	2	8%	6	23%	8%
18 GUNES	11	42%	2	18%	1	9%	-18%
2 SENOGLU	8	31%	0	0%	3	38%	25%
11 AKYALDIZ	6	23%	0	0%	1	17%	17%
8 GUVELI	1	4%	0	0%	1	100%	100%
5 BAYAZIT	0	0%	0	-	0	-	-
6 SAHIN	0	0%	0	-	0	-	-
7 GULUBAY	0	0%	0	-	0	-	-

K2-Attacks - Transiti	Σ	Σ %	=	= %	#	# %	Eff
TURKEY 98'	64	100%	7	11%	22	34%	20%
2 SENOGLU	32	50%	3	9%	12	38%	25%
17 YUZGENC	13	20%	1	8%	3	23%	15%
11 AKYALDIZ	11	17%	1	9%	4	36%	27%
18 GUNES	7	11%	2	29%	3	43%	14%
16 OZEL	1	2%	0	0%	0	0%	-100%
5 BAYAZIT	0	0%	0	-	0	-	-
6 SAHIN	0	0%	0	-	0	-	-

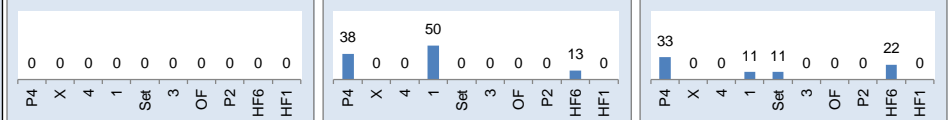
Rotation 2

TURKEY 98'

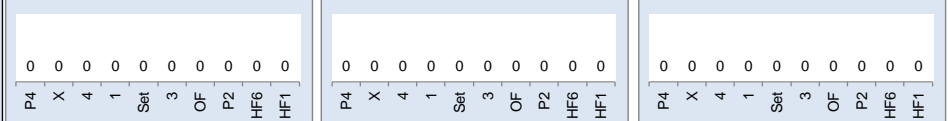
Base K1 57% (8) Base K2 21% (3) Base K7 0% (0) Base KD 21% (3)



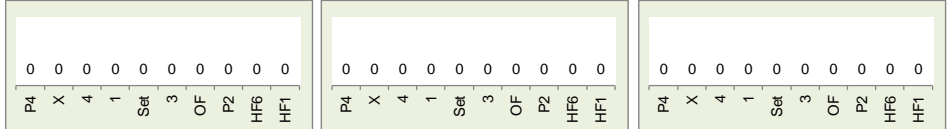
Rec in Pos 1 0% (0) Rec in Pos 6 47% (8) Rec in Pos 5 53% (9)



Rec in Pos 2 0% (0) Rec in Pos 3 0% (0) Rec in Pos 4 0% (0)



Settermovement to 4 0 Settermovement to 3 0 Settermovement to 2 0



Distribution

K1 after all R 45 18% 31% K1 after R#+ 16 31% 44% K2 Transition 36 25% 39%

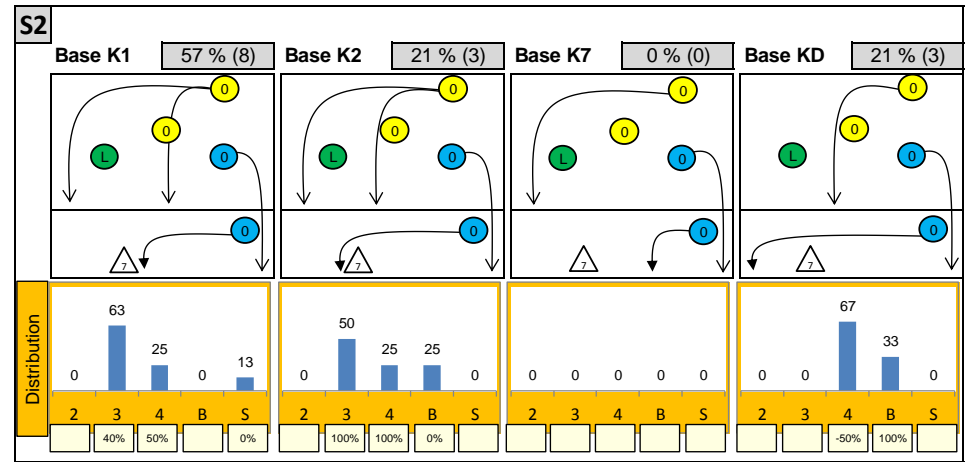
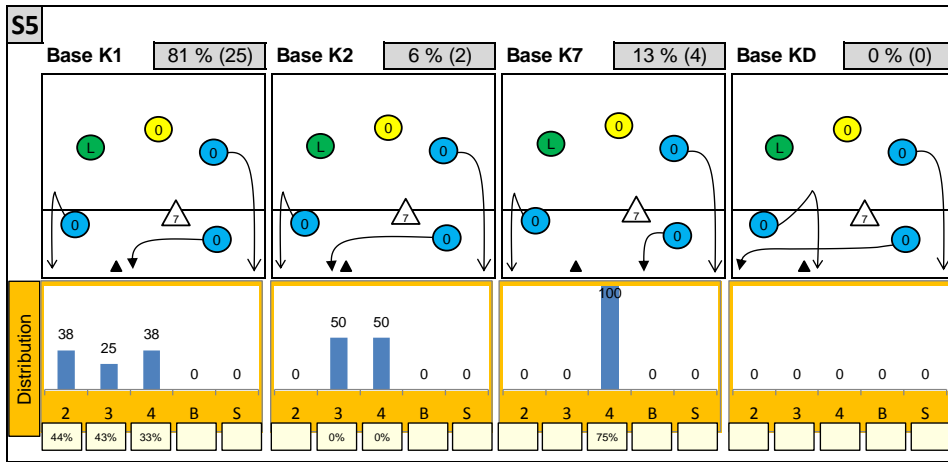
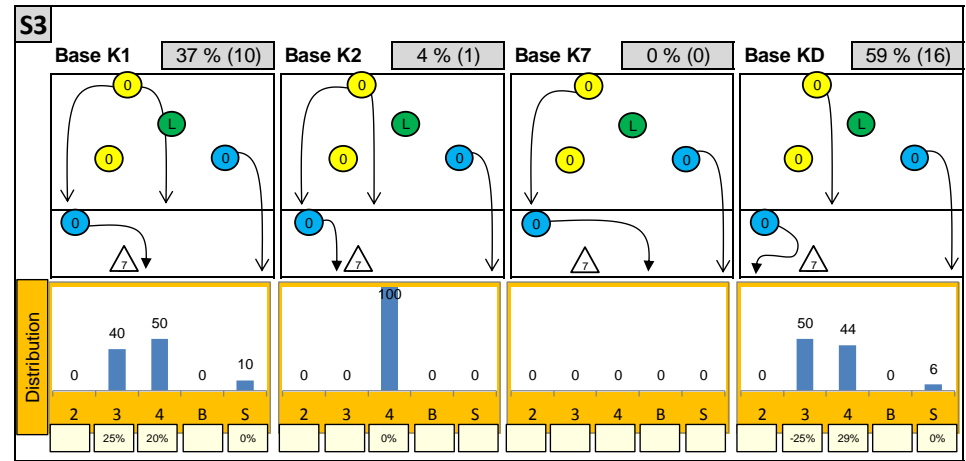
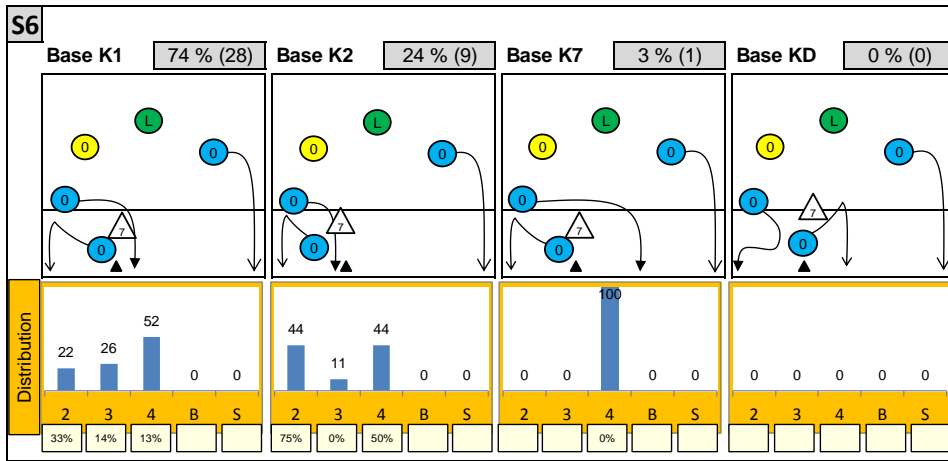
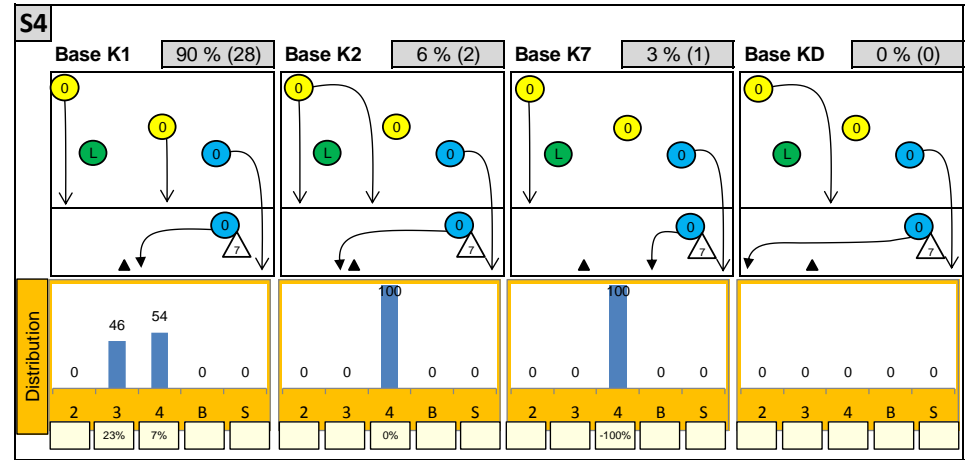
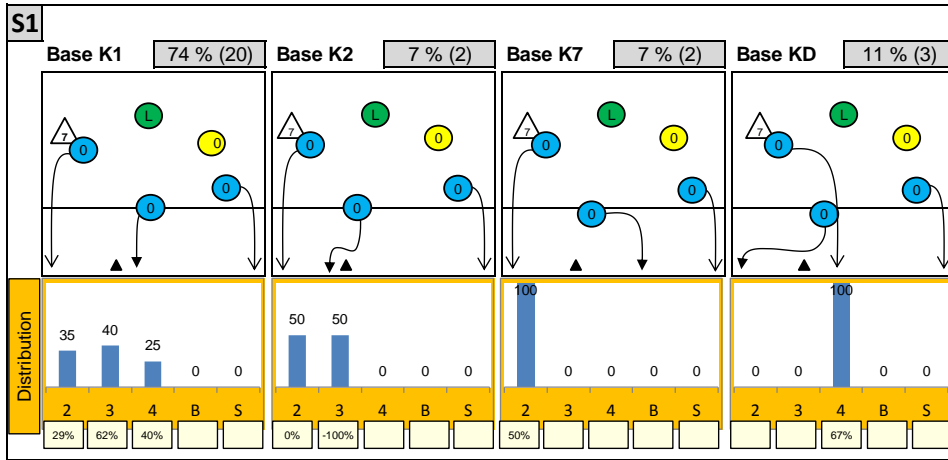
K1 after all R			K1 after R#+			K2 Transition				
1	2%	12 27%	0	-	0	-	3 19%	0	-	
-100%	0%	33%	33%	-	-	-	33%	33%	-	-
0	-	7 16%	24 53%	0	-	0	-	6 38%	7 44%	0
-	-	43%	57%	8%	25%	-	-	50%	67%	14%
								20%	40%	23%
								50%	50%	36%

Reception	Σ	Σ %	=/	= / %	+	+ %	#	# %	+ # %	Eff
TURKEY 98'	72	100%	12	17%	12	17%	7	10%	26%	10%
16 OZEL	21	29%	1	5%	6	29%	2	10%	38%	33%
11 AKYALDIZ	19	26%	4	21%	5	26%	2	11%	37%	16%
2 SENOGLU	11	15%	1	9%	0	0%	2	18%	18%	9%
13 MEMIS	11	15%	2	18%	0	0%	1	9%	9%	-9%
17 YUZGENC	8	11%	2	25%	1	13%	0	0%	13%	-13%
8 GUVELI	1	1%	1	100%	0	0%	0	0%	0%	-100%

K1-Attacks after R#+	Σ	Σ %	=	= %	#	# %	Eff
TURKEY 98'	16	100%	1	6%	7	44%	31%
2 SENOGLU	6	38%	0	0%	1	17%	0%
14 ERDEM	5	31%	1	20%	3	60%	40%
17 YUZGENC	3	19%	0	0%	1	33%	33%
8 GUVELI	1	6%	0	0%	1	100%	100%
11 AKYALDIZ	1	6%	0	0%	1	100%	100%
5 BAYAZIT	0	0%	0	0	0	-	-
6 SAHIN	0	0%	0	-	0	-	-

K2-Attacks - Transiti	Σ	Σ %	=	= %	#	# %	Eff
TURKEY 98'	36	100%	2	6%	14	39%	25%
2 SENOGLU	11	31%	0	0%	4	36%	18%
11 AKYALDIZ	10	28%	1	10%	3	30%	20%
17 YUZGENC	10	28%	0	0%	5	50%	40%
14 ERDEM	4	11%	0	0%	2	50%	50%
16 OZEL	1	3%	1	100%	0	0%	-100%
5 BAYAZIT	0	0%	0	-	0	-	-
6 SAHIN	0	0%	0	-	0	-	-

Attackdistribution depending on Settercalls - TURKEY 98'

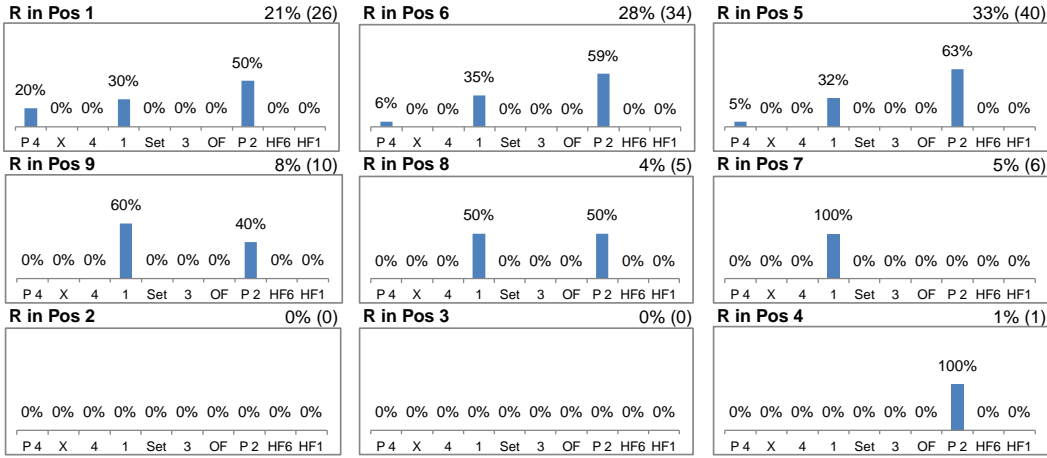


2: Attack of Opposite 3: Attack of Middleblocker 4: Attack of Outside B: Attack of Backrow

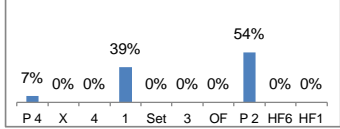
S: Attack of Setter xx%: Efficiency of Attacks (-100% to +100%)

Attacks depending on Reception Position - TURKEY 98'

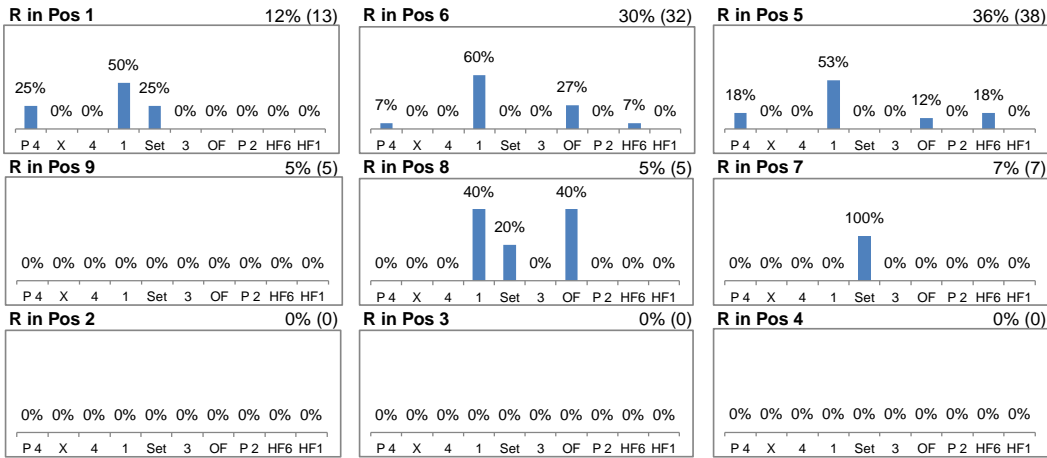
Setter back (S1, S6, S5) - R#+



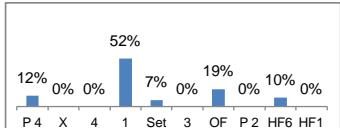
alle Pos



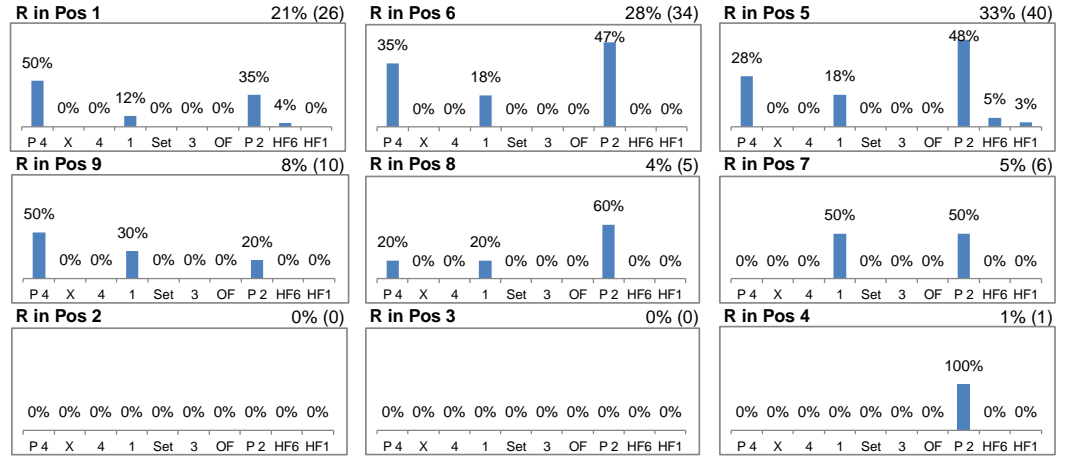
Setter front (S4, S3, S2) - R#+



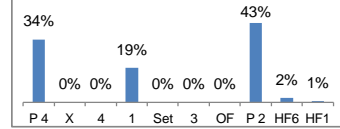
alle Pos



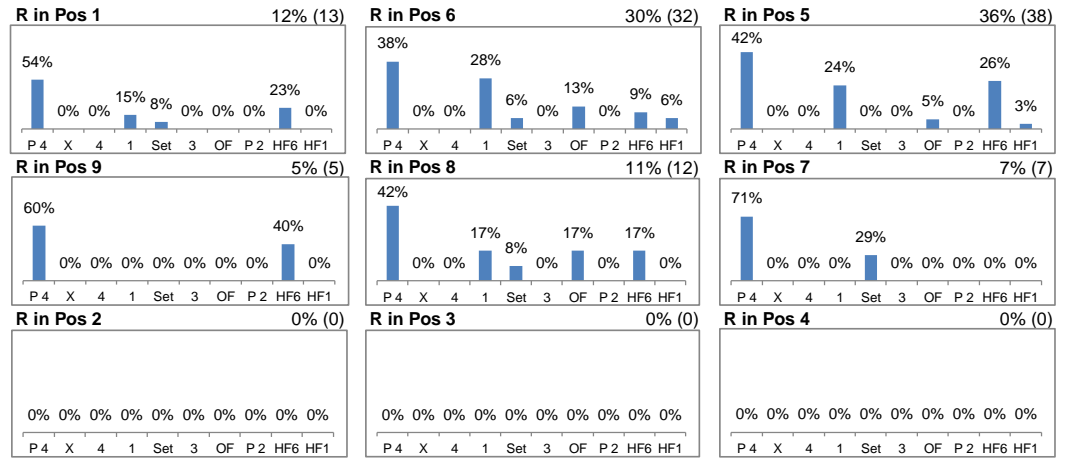
Setter back (S1, S6, S5) - all Receptions



alle Pos



Setter front (S4, S3, S2) - all Receptions



alle Pos

