

Roster

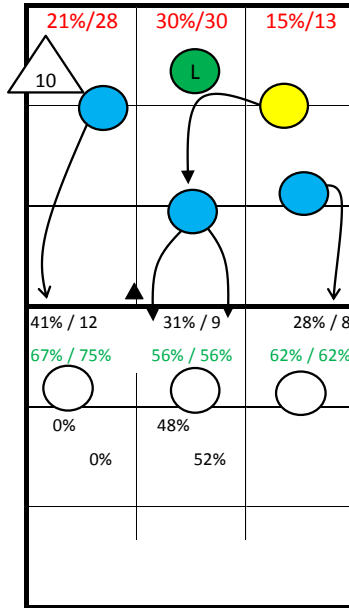
- 2 LAZOVIC
- 3 MARTINOVIC
- 4 JAKŠIĆ
- 5 MILOJEVIC
- 6 MILOJEVIC
- 7 KOCIC
- 8 SEKULIC
- 9 RADMILOVIC
- 10 VESELINOVIC
- 11 TASIC
- 14 ASONJA
- 18 STOJKOVIC

Set

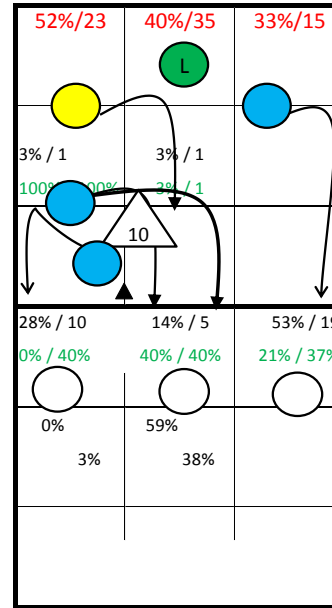
Set

SERBIA -

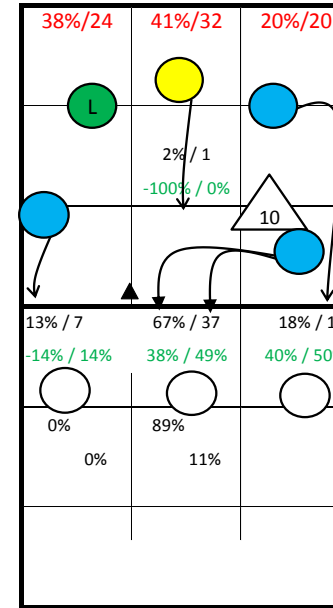
4: Jumpfloat at Position 1
10: Jumpfloat at Position 1



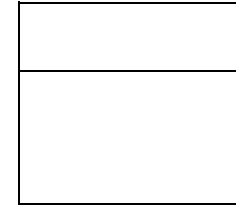
S1



S6



S5



S1



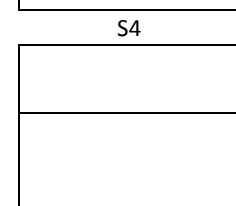
S6



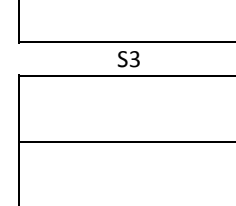
S5



S4

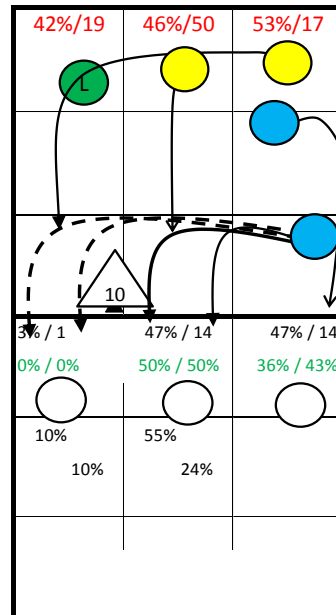
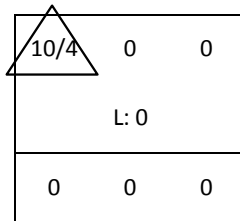


S3

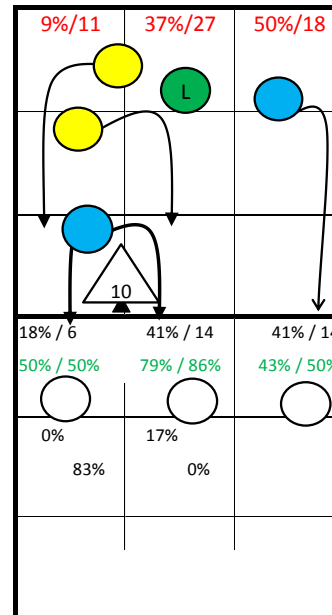


S2

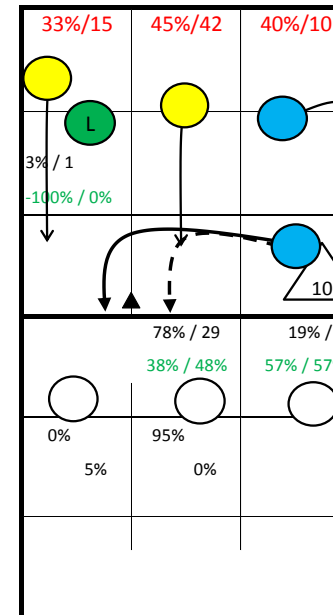
Starting Lineup:



S2

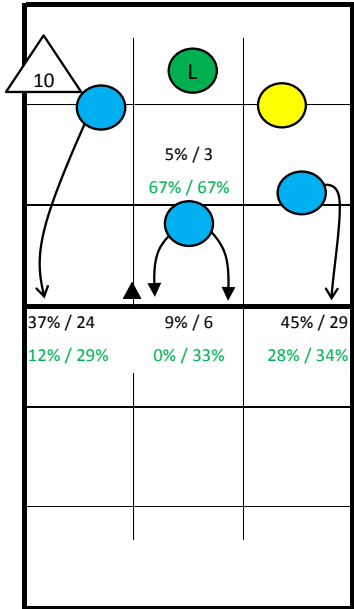


S3

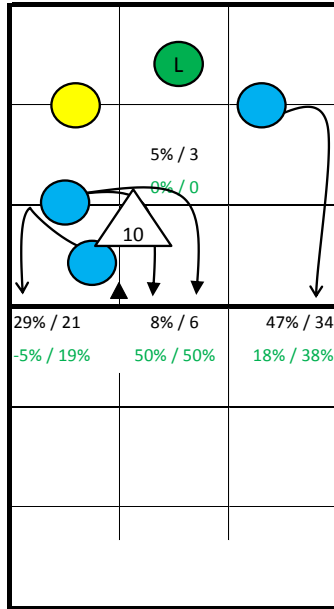


S4

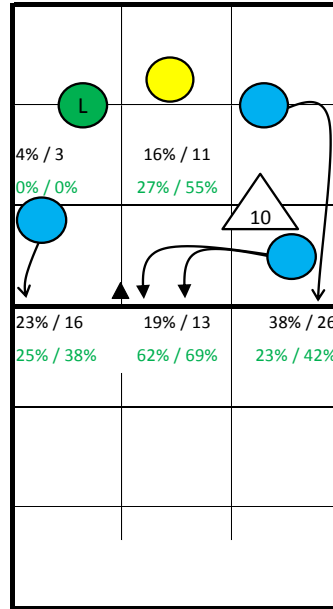
SERBIA -



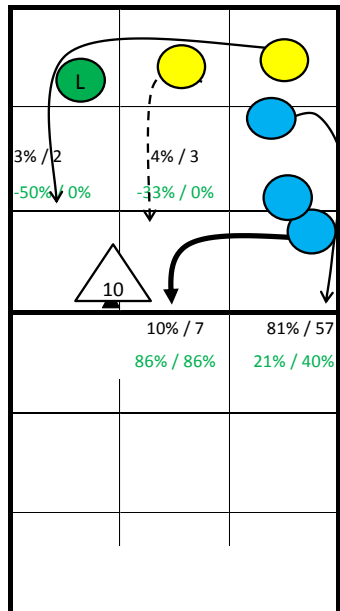
S1



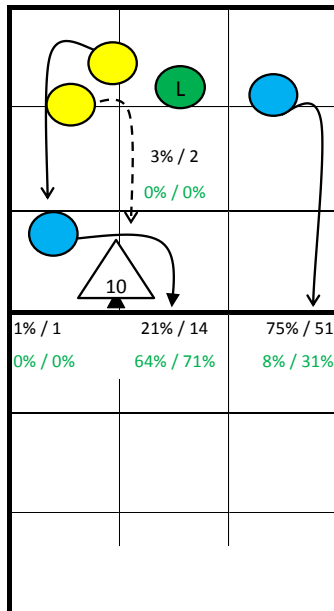
S6



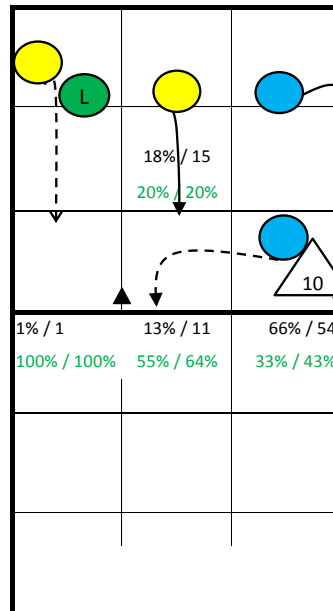
S5



S2



S3



S4

Notes:

SERBIA - all Statistics

pld Set	Points					Serve								Reception										Attack											
	pts	P/s	easy=	all=	W-L	Σ	=	-	+	#	=%	#%	eff%	Σ	in %	=	/	-	+	#	=/%	+#%	#%	eff%	Σ	in %	=	/	!	+	#	=/%	#%	eff%	
SERBIA	26	459	17,7	159	383	76	610	70	194	295	51	11%	8%	45%	491		42	4	205	98	142	9%	49%	29%	40%	863		66	59	32	206	346	14%	40%	26%
2 LAZOVIC	25	126	5,0	38	77	49	82	5	36	35	6	6%	7%	44%	215	44%	12	3	99	46	55	7%	47%	26%	40%	297	34%	31	15	9	72	115	15%	39%	23%
3 MARTINOVIC	12	5	0,4	5	8	-3	14	2	4	6	2	14%	14%	43%	13	3%	1	0	6	3	3	8%	46%	23%	38%	14	2%	2	1	0	3	2	21%	14%	-7%
4 JAKŠIĆ	12	4	0,3	3	6	-2	17	1	6	9	1	6%	6%	53%	0											2	0%	0	0	0	0	2	0%	100%	100%
5 MILOJEVIC	25	0		1	22	-22	0							128	26%	13	1	47	25	42	11%	53%	33%	41%	0										
6 MILOJEVIC	9	4	0,4	2	5	-1	8	2	2	4	0	25%	0%	25%	0										5	1%	0	0	0	3	2	0%	40%	40%	
7 KOCIC	26	90	3,5	13	57	33	98	8	29	53	8	8%	8%	54%	1	0%	0	0	0	1	0	0%	100%	0%	100%	116	13%	4	8	4	28	62	10%	53%	43%
8 SEKULIC	26	94	3,6	29	79	15	95	13	25	47	10	14%	11%	46%	124	25%	14	0	47	21	42	11%	51%	34%	40%	207	24%	15	21	12	48	77	17%	37%	20%
9 RADMILOVIC	26	44	1,7	13	37	7	83	11	28	40	4	13%	5%	40%	2	0%	1	0	1	0	0	50%	0%	0%	-50%	41	5%	2	0	2	7	24	5%	59%	54%
10 VESELINOVIC	26	26	1,0	23	36	-10	88	10	31	40	7	11%	8%	42%	3	1%	0	0	2	1	0	0%	33%	0%	33%	18	2%	0	0	0	3	13	0%	72%	72%
11 TASIC	5	10	2,0	3	5	5	11	1	2	6	2	9%	18%	64%	4	1%	0	0	3	1	0	0%	25%	0%	25%	19	2%	1	2	0	2	8	16%	42%	26%
14 ASONJA	26	45	1,7	21	40	5	91	13	25	45	8	14%	9%	44%	1	0%	1	0	0	0	0	100%	0%	0%	-100%	116	13%	8	9	3	32	34	15%	29%	15%
18 STOJKOVIC	13	11	0,8	8	11	0	23	4	6	10	3	17%	13%	39%	0										28	3%	3	3	2	8	7	21%	25%	4%	

	Block						Defense						Freeball					Set		
	Σ	=	+	#	#%	eff%	Σ	=	/-!	+#	+#%	eff%	Σ	err	bad	god	eff%	Σ	=	eff%
SERBIA	288	105	88	62	22%	16%	111	18	18	75	68%	75%	53	4	6	43	72%	266	19	59%
2 LAZOVIC	26	9	9	5	19%	19%	18	3	3	12	67%	72%	5	1	0	4	60%	1	1	-100%
3 MARTINOVIC	2	1	0	1	50%	0%	4	0	0	4	100%	100%	3	0	0	3	100%	1	1	-100%
4 JAKŠIĆ	7	3	2	1	14%	0%	3	0	0	3	100%	100%	0					19	2	68%
5 MILOJEVIC	0						38	8	6	24	63%	71%	18	1	1	16	83%	0		
6 MILOJEVIC	11	3	6	2	18%	45%	1	0	0	1	100%	100%	0					0		
7 KOCIC	90	36	26	20	22%	11%	4	0	1	3	75%	75%	8	0	0	8	100%	2	1	0%
8 SEKULIC	24	10	4	7	29%	4%	22	5	6	11	50%	64%	6	0	0	6	100%	1	1	-100%
9 RADMILOVIC	58	22	16	16	28%	17%	4	1	1	2	50%	50%	1	0	0	1	100%	0		
10 VESELINOVIC	40	12	16	6	15%	25%	4	1	0	3	75%	75%	4	1	3	0	-25%	240	12	62%
11 TASIC	0						3	0	0	3	100%	100%	1	1	0	0	-100%	1	0	-100%
14 ASONJA	26	9	7	3	12%	4%	6	0	0	6	100%	100%	6	0	2	4	50%	0		
18 STOJKOVIC	4	0	2	1	25%	75%	4	0	1	3	75%	100%	1	0	0	1	100%	1	1	-100%

pld Set played Sets
 P/s Points per Set
 pts Points
 easy= easy errors (serve, net contact, ...)
 all= all errors
 W-L points - errors
 Σ sum of all events
 in % in percent of all team events

SERBIA - Attack-Statistic

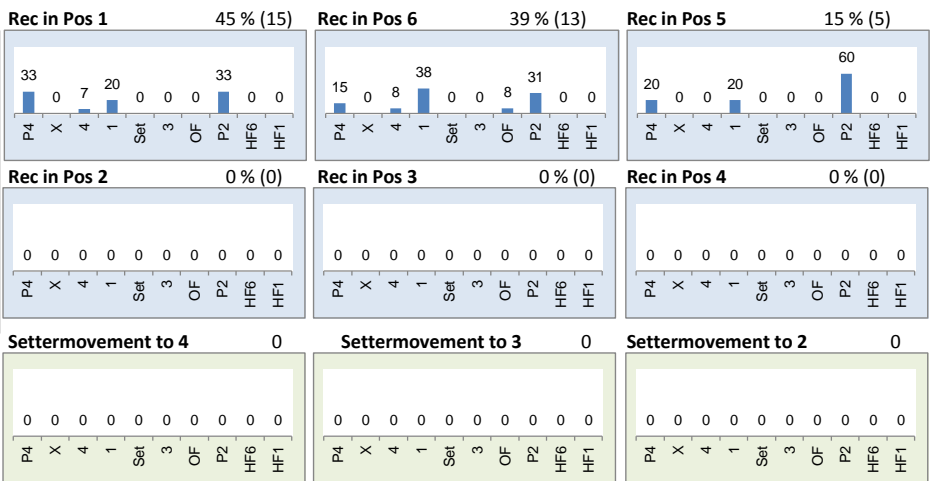
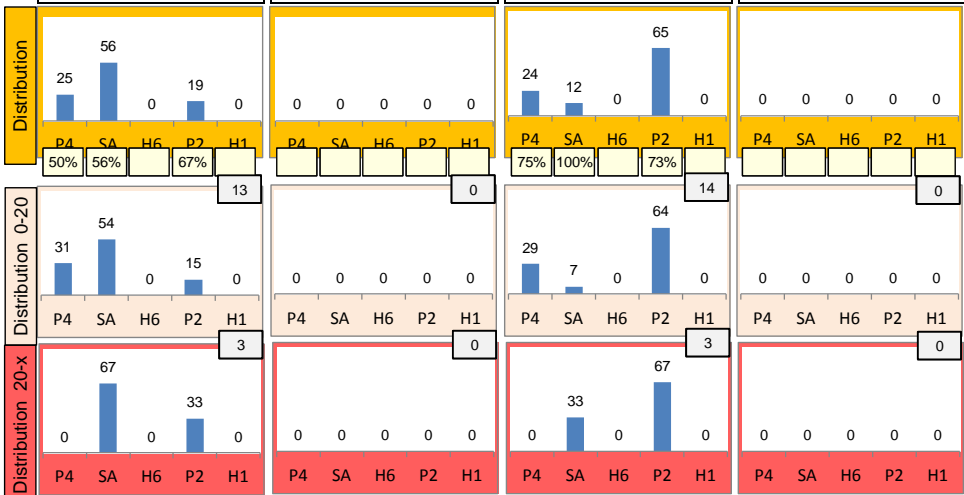
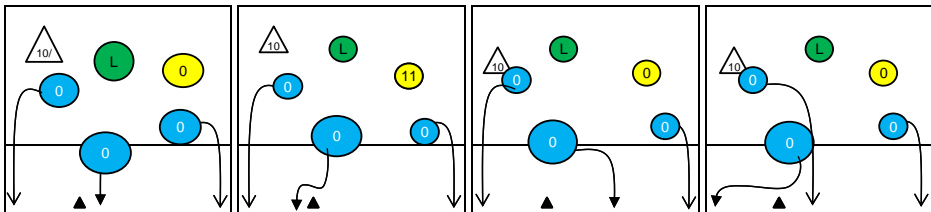
	K1 & K2 Attacks							K1 All Attacks							K2 Attacks							K1 aft R other Ply				K1 after own Rec						
	Σ	in %	=	/	#	=/%	##%	eff	Σ	in %	=	/	#	=/%	##%	eff	Σ	in %	=	/	#	=/%	##%	eff	sum	#	##%	eff	sum	#	##%	eff
SERBIA	819		63	59	313	15%	38%	23%	395		28	33	162	15%	41%	26%	424		35	26	151	14%	36%	21%	355	144	41%		40	18	45%	
2 LAZOVIC	289	35%	31	15	107	16%	37%	21%	100	25%	11	4	41	15%	41%	26%	189	45%	20	11	66	16%	35%	19%	75	31	41%	24%	25	10	40%	32%
8 SEKULIC	206	25%	15	21	77	17%	37%	20%	87	22%	5	13	30	21%	34%	14%	119	28%	10	8	47	15%	39%	24%	74	22	30%	8%	13	8	62%	46%
14 ASONJA	111	14%	7	9	32	14%	29%	14%	57	14%	6	6	19	21%	33%	12%	54	13%	1	3	13	7%	24%	17%	57	19	33%	12%	0			
7 KOCIC	110	13%	3	8	57	10%	52%	42%	89	23%	3	6	46	10%	52%	42%	21	5%	0	2	11	10%	52%	43%	89	46	52%	42%	0			
9 RADMILOVIC	37	5%	1	0	21	3%	57%	54%	27	7%	0	0	15	0%	56%	56%	10	2%	1	0	6	10%	60%	50%	27	15	56%	56%	0			
18 STOJKOVIC	28	3%	3	3	7	21%	25%	4%	16	4%	0	2	4	13%	25%	12%	12	3%	3	1	3	33%	25%	-8%	16	4	25%	12%	0			
11 TASIC	19	2%	1	2	8	16%	42%	26%	11	3%	1	2	6	27%	55%	27%	8	2%	0	0	2	0%	25%	25%	10	6	60%	40%	1	0	0%	-100%
3 MARTINOVIC	14	2%	2	1	2	21%	14%	-7%	6	2%	2	0	1	33%	17%	-17%	8	2%	0	1	1	13%	12%	0%	5	1	20%	-20%	1	0	0%	0%
6 MILOJEVIC	3	0%	0	0	2	0%	67%	67%	1	0%	0	0	0	0%	0%	0%	2	0%	0	0	2	0%	100%	100%	1	0	0%	0%	0			
10 VESELINOVIC	2	0%	0	0	0	0%	0%	0%	1	0%	0	0	0	0%	0%	0%	1	0%	0	0	0	0%	0%	0%	1	0	0%	0%	0			
4 JAKŠIC	0								0								0								0				0			
5 MILOJEVIC	0								0								0								0				0			

	K1 after R#+							K1 after R-!							Freeball-Attacks									
	Σ	in %	=	/	#	=/%	##%	eff	Σ	in %	=	/	#	=/%	##%	eff	Σ	in %	=	/	#	=/%	##%	eff
SERBIA	226		11	14	111	11%	49%	38%	169		17	19	51	21%	30%	9%	2		1	0	0	50%	0%	-50%
2 LAZOVIC	44	19%	4	0	22	9%	50%	41%	56	33%	7	4	19	20%	34%	14%	1	0	1	0	0	100%	0%	-100%
8 SEKULIC	41	18%	1	3	18	10%	44%	34%	46	27%	4	10	12	30%	26%	-4%	0							
14 ASONJA	21	9%	2	5	8	33%	38%	5%	36	21%	4	1	11	14%	31%	17%	0							
7 KOCIC	86	38%	3	6	45	10%	52%	42%	3	2%	0	0	1	0%	33%	33%	0							
9 RADMILOVIC	24	11%	0	0	13	0%	54%	54%	3	2%	0	0	2	0%	67%	67%	0							
18 STOJKOVIC	5	2%	0	0	3	0%	60%	60%	11	7%	0	2	1	18%	9%	-9%	0							
11 TASIC	2	1%	0	0	2	0%	100%	100%	9	5%	1	2	4	33%	44%	11%	0							
3 MARTINOVIC	1	0%	1	0	0	100%	0%	-100%	5	3%	1	0	1	20%	20%	0%	1	0	0	0	0	0%	0%	0%
6 MILOJEVIC	1	0%	0	0	0	0%	0%	0%	0								0							
10 VESELINOVIC	1	0%	0	0	0	0%	0%	0%	0								0							
4 JAKŠIC	0								0								0							
5 MILOJEVIC	0								0								0							

Rotation 1

SERBIA

Base K1 48 % (16) Base K2 0 % (0) Base K7 52 % (17) Base KD 0 % (0)



Distribution

K1 after all R 64 38% 50% K1 after R#+ 33 67% 70% K2 Transition 62 21% 32%

0	-	0	-	0	-	0	-	0	-	0	-	0	-	4	6%	0	-
-	-	-	-	-	-	-	-	-	-	-	-	-	-	25%	50%	-	-
29	45%	11	17%	24	38%	14	42%	11	33%	8	24%	25	40%	3	5%	30	48%
45%	59%	64%	64%	17%	33%	71%	79%	64%	64%	62%	63%	12%	28%	33%	33%	27%	33%

Reception	∑	∑ %	=	= %	+	+ %	#	# %	+ # %	Eff
SERBIA	75	100%	5	7%	15	20%	20	27%	47%	40%
5 MILOJEVIC	35	47%	4	11%	7	20%	10	29%	49%	37%
2 LAZOVIC	29	39%	0	0%	6	21%	6	21%	41%	41%
8 SEKULIC	7	9%	1	14%	0	0%	3	43%	43%	29%
3 MARTINOVIC	3	4%	0	0%	2	67%	1	33%	100%	100%
10 VESELINOVIC	1	1%	0	0%	0	0%	0	0%	0%	0%
4 JAKŠIC	0	0%	0	-	0	-	0	-	-	-

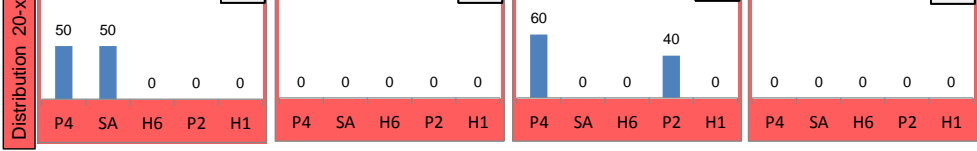
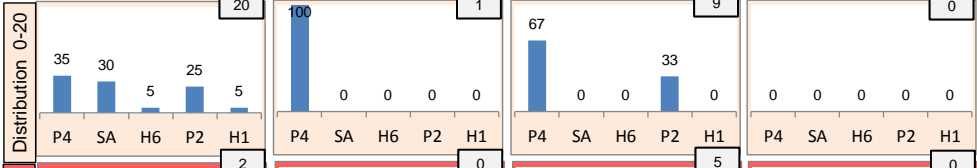
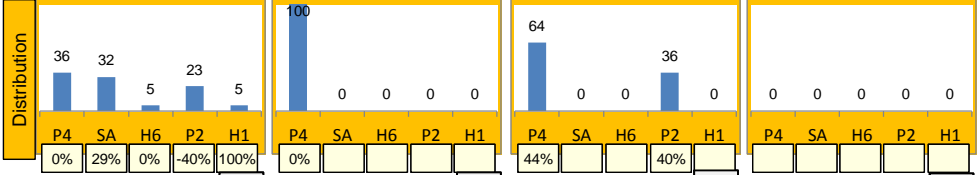
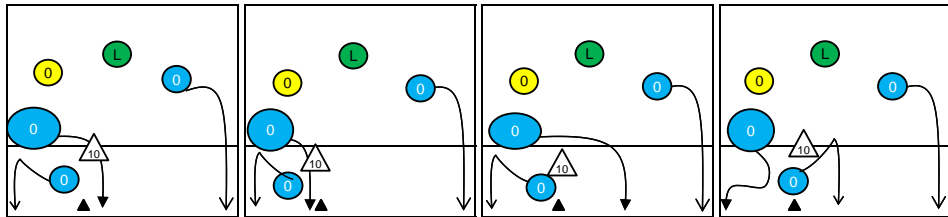
K1-Attacks after R#+	∑	∑ %	=	= %	#	# %	Eff
SERBIA	33	100%	1	3%	23	70%	67%
2 LAZOVIC	12	36%	1	8%	9	75%	67%
9 RADMILOVIC	9	27%	0	0%	6	67%	67%
14 ASONJA	5	15%	0	0%	4	80%	80%
8 SEKULIC	3	9%	0	0%	2	67%	67%
7 KOCIC	2	6%	0	0%	1	50%	50%
18 STOJKOVIC	2	6%	0	0%	1	50%	50%
3 MARTINOVIC	0	0%	0	-	0	-	-

K2-Attacks - Transitor	∑	∑ %	=	= %	#	# %	Eff
SERBIA	62	100%	3	5%	20	32%	21%
2 LAZOVIC	34	55%	3	9%	12	35%	18%
14 ASONJA	14	23%	0	0%	3	21%	21%
18 STOJKOVIC	5	8%	0	0%	2	40%	40%
8 SEKULIC	3	5%	0	0%	1	33%	33%
9 RADMILOVIC	3	5%	0	0%	1	33%	33%
3 MARTINOVIC	1	2%	0	0%	0	0%	-100%
6 MILOJEVIC	1	2%	0	0%	1	100%	100%

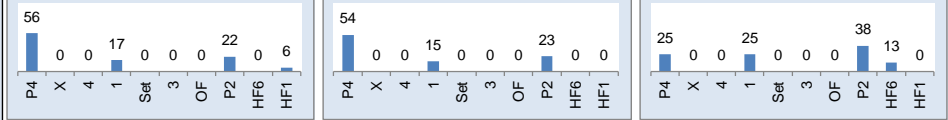
Rotation 6

SERBIA

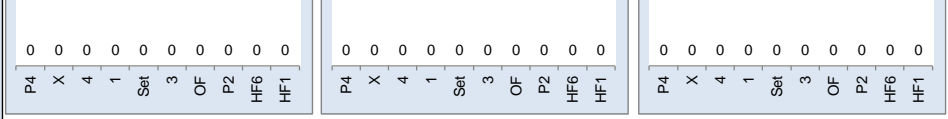
Base K1 59% (22) Base K2 3% (1) Base K7 38% (14) Base KD 0% (0)



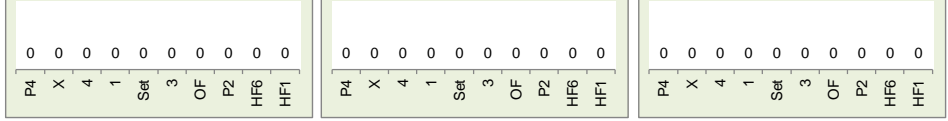
Rec in Pos 1 46% (18) Rec in Pos 6 33% (13) Rec in Pos 5 21% (8)



Rec in Pos 2 0% (0) Rec in Pos 3 0% (0) Rec in Pos 4 0% (0)



Settermovement to 4 0 Settermovement to 3 0 Settermovement to 2 0



Distribution

K1 after all R 73 12% 36% K1 after R#+ 39 21% 41% K2 Transition 75 12% 28%

Player	1	3	7	10	37
1	1%	4%	0	-	-
100%	100%	0%	0%	-	-
25	34%	7	10%	37	51%
4%	32%	29%	43%	14%	38%

Reception	Σ	Σ %	=/	=/ %	+	+ %	#	# %	+ # %	Eff
SERBIA	90	100%	8	9%	23	26%	17	19%	44%	36%
2 LAZOVIC	41	46%	2	5%	15	37%	4	10%	46%	41%
5 MILOJEVIC	33	37%	3	9%	7	21%	10	30%	52%	42%
8 SEKULIC	12	13%	2	17%	1	8%	3	25%	33%	17%
3 MARTINOVIC	2	2%	0	0%	0	0%	0	0%	0%	0%
9 RADMILOVIC	1	1%	1	100%	0	0%	0	0%	0%	-100%
11 TASIC	1	1%	0	0%	0	0%	0	0%	0%	0%

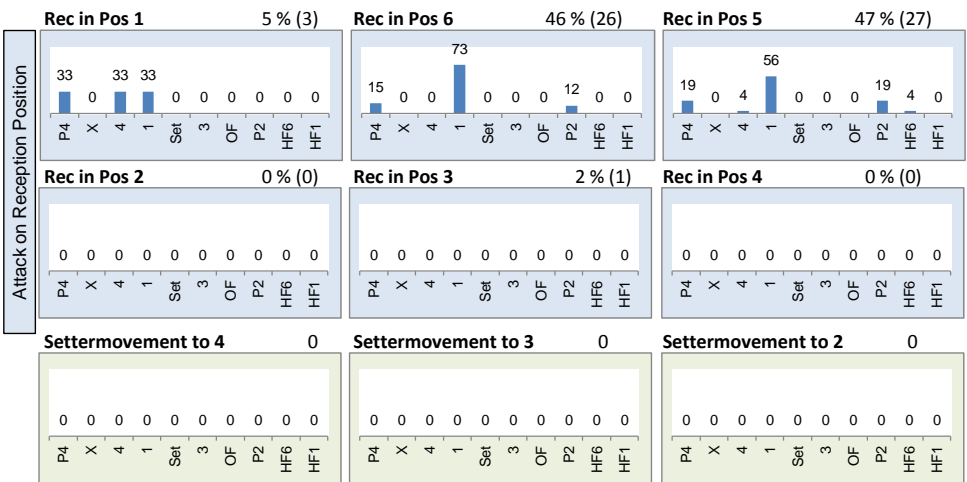
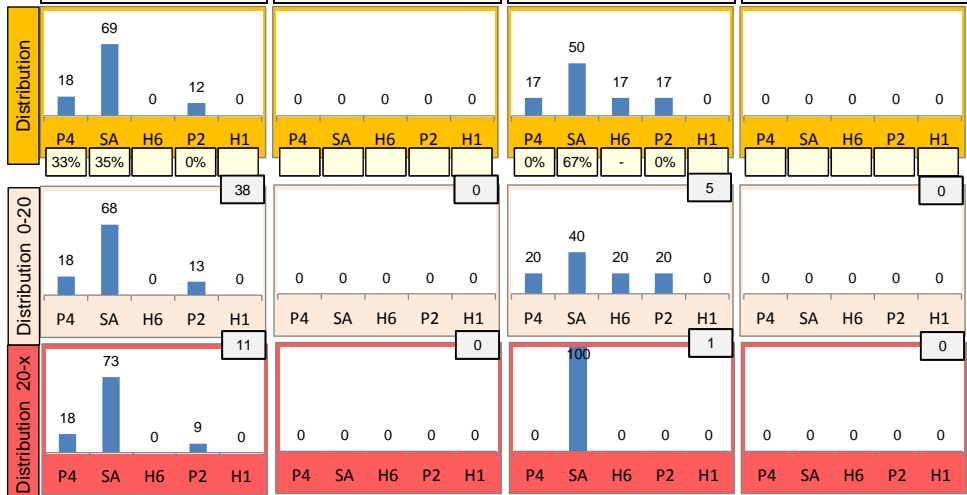
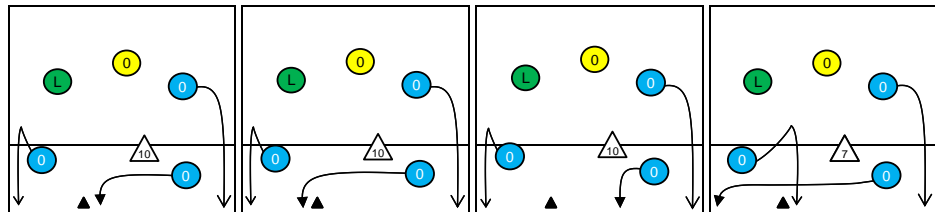
K1-Attacks after R#+	Σ	Σ %	=	= %	#	# %	Eff
SERBIA	39	100%	4	10%	16	41%	21%
8 SEKULIC	18	46%	0	0%	7	39%	28%
14 ASONJA	9	23%	2	22%	3	33%	-11%
9 RADMILOVIC	6	15%	0	0%	3	50%	50%
18 STOJKOVIC	2	5%	0	0%	2	100%	100%
2 LAZOVIC	1	3%	0	0%	0	0%	0%
3 MARTINOVIC	1	3%	1	100%	0	0%	-100%
7 KOCIC	1	3%	1	100%	0	0%	-100%

K2-Attacks - Transitio	Σ	Σ %	=	= %	#	# %	Eff
SERBIA	75	100%	5	7%	21	28%	12%
8 SEKULIC	32	43%	4	13%	12	38%	16%
14 ASONJA	20	27%	1	5%	3	15%	-5%
2 LAZOVIC	13	17%	0	0%	3	23%	23%
11 TASIC	4	5%	0	0%	1	25%	25%
9 RADMILOVIC	3	4%	0	0%	2	67%	67%
18 STOJKOVIC	2	3%	0	0%	0	0%	-50%
3 MARTINOVIC	1	1%	0	0%	0	0%	0%

Rotation 5

SERBIA

Base K1 89% (49) Base K2 0% (0) Base K7 11% (6) Base KD 0% (0)



Distribution

K1 after all R 90 20% 36% K1 after R#+ 57 28% 42% K2 Transition 75 31% 44%

	0	-	3	3%	0	-
	0	-	1	2%	0	-
	3	4%	14	19%	0	-
	0	0%	29%	50%	-	-
	17	19%	40	44%	30	33%
	12%	24%	38%	48%	7%	30%

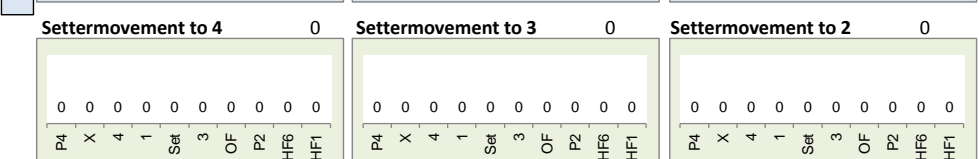
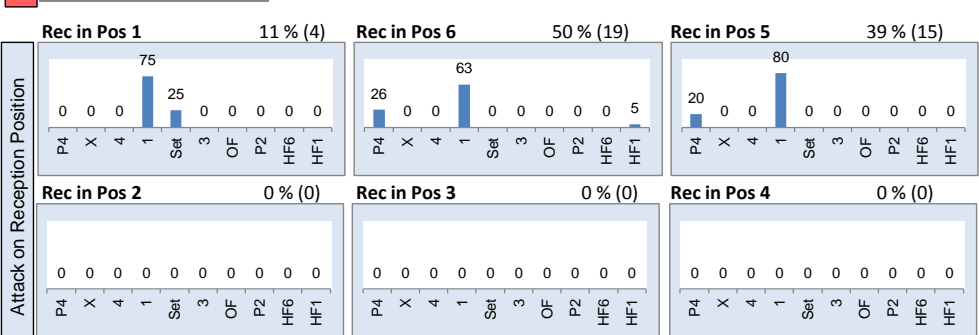
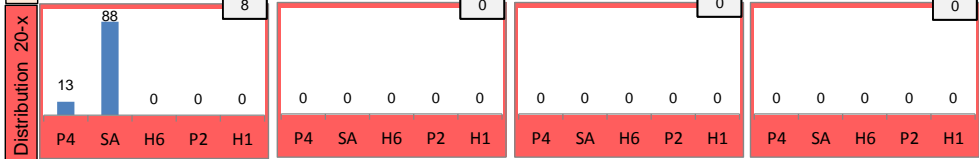
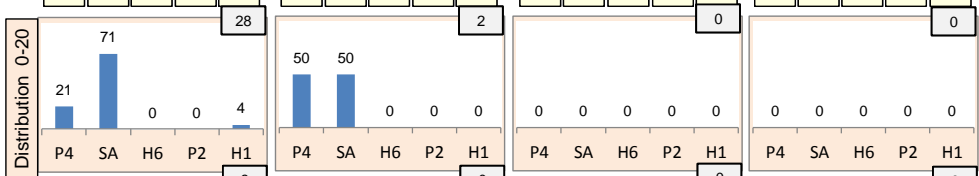
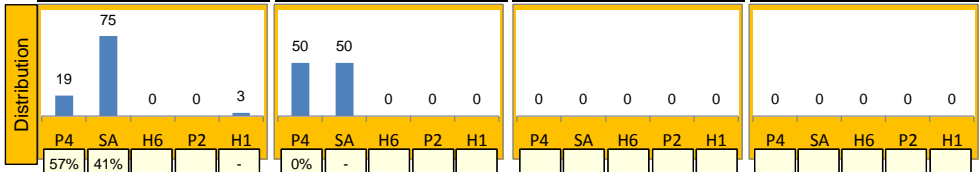
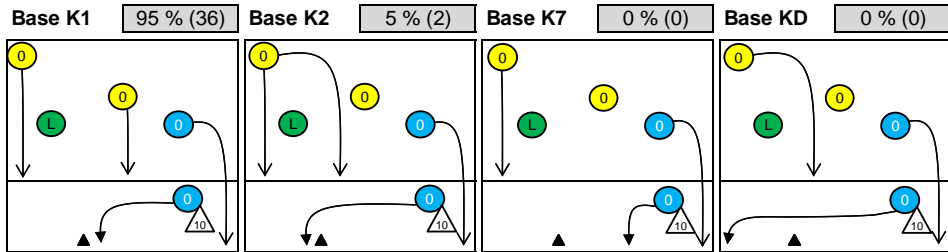
Reception	Σ	Σ %	=	= %	+	+ %	#	# %	+ # %	Eff
SERBIA	107	100%	7	7%	21	20%	38	36%	55%	49%
2 LAZOVIC	65	61%	5	8%	10	15%	24	37%	52%	45%
8 SEKULIC	27	25%	1	4%	7	26%	11	41%	67%	63%
5 MILOJEVIC	10	9%	1	10%	1	10%	3	30%	40%	30%
3 MARTINOVIC	2	2%	0	0%	1	50%	0	0%	50%	50%
7 KOCIC	1	1%	0	0%	1	100%	0	0%	100%	100%
9 RADMILOVIC	1	1%	0	0%	0	0%	0	0%	0%	0%

K1-Attacks after R#+	Σ	Σ %	=	= %	#	# %	Eff
SERBIA	57	100%	2	4%	24	42%	28%
7 KOCIC	37	65%	1	3%	18	49%	38%
8 SEKULIC	9	16%	0	0%	4	44%	33%
14 ASONJA	6	11%	0	0%	1	17%	-17%
2 LAZOVIC	2	4%	1	50%	0	0%	-50%
6 MILOJEVIC	1	2%	0	0%	0	0%	0%
11 TASIC	1	2%	0	0%	1	100%	100%
18 STOJKOVIC	1	2%	0	0%	0	0%	0%

K2-Attacks - Transitor	Σ	Σ %	=	= %	#	# %	Eff
SERBIA	75	100%	7	9%	33	44%	31%
8 SEKULIC	26	35%	3	12%	12	46%	27%
2 LAZOVIC	18	24%	2	11%	8	44%	28%
14 ASONJA	16	21%	0	0%	6	38%	38%
7 KOCIC	9	12%	0	0%	6	67%	67%
18 STOJKOVIC	4	5%	2	50%	1	25%	-25%
3 MARTINOVIC	1	1%	0	0%	0	0%	0%
11 TASIC	1	1%	0	0%	0	0%	0%

Rotation 4

SERBIA



Distribution

K1 after all R	63	24%	40%	K1 after R#+	37	35%	46%	K2 Transition	80	31%	39%
6	10%	2	3%	0	-	1	3%	0	-	0	-
-17%	17%	50%	50%	-	-	-100%	0%	-	-	25%	25%
0	-	28	44%	27	43%	0	-	28	76%	8	22%
-	-	36%	46%	19%	37%	-	-	36%	46%	50%	50%
0	-	16	20%	0	-	1	1%	5	6%	57	71%
-	-	25%	25%	-	-	100%	100%	20%	40%	33%	42%

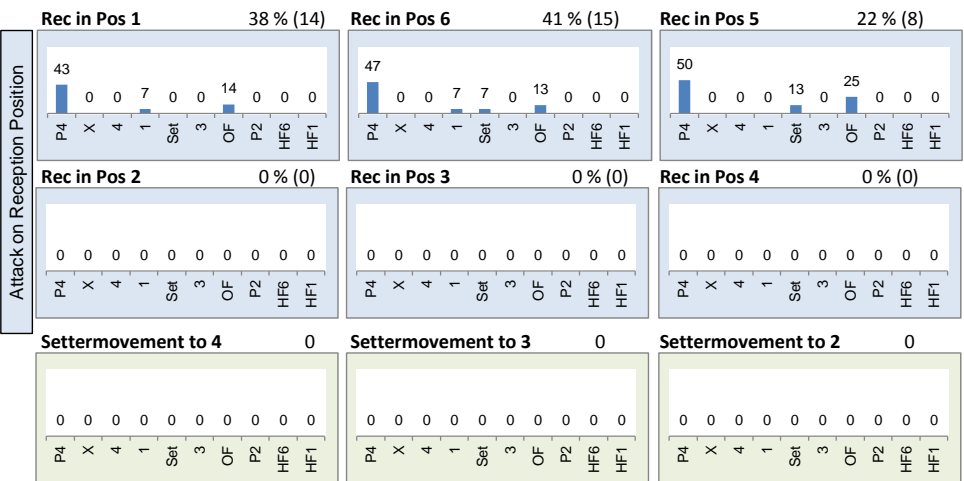
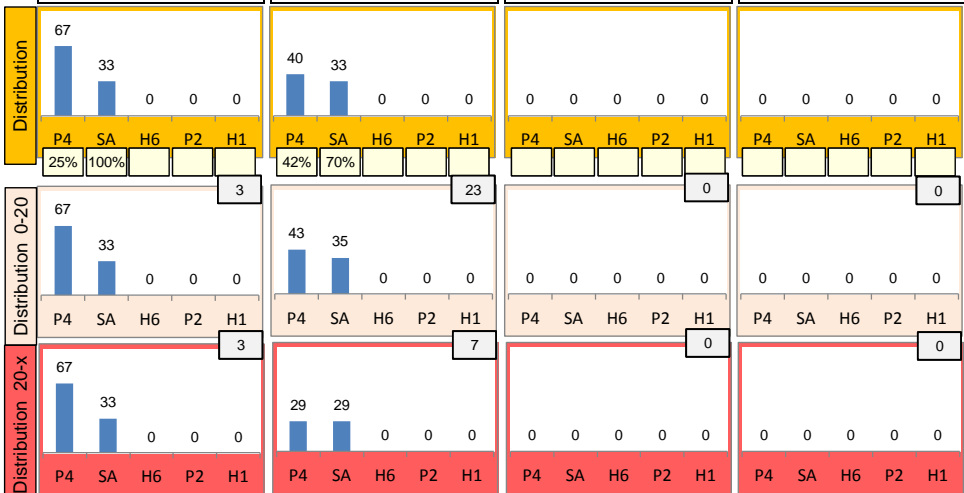
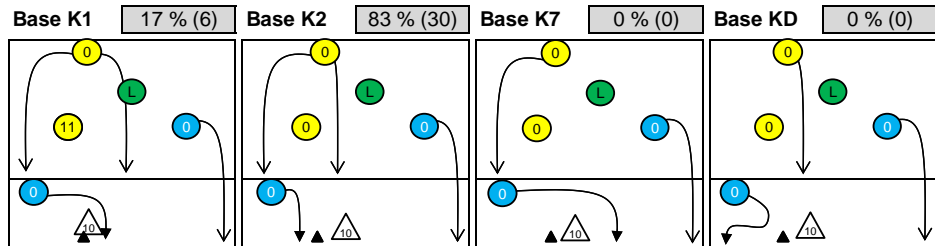
Reception	Σ	Σ %	=	= %	+	+ %	#	# %	+ # %	Eff
SERBIA	78	100%	11	14%	11	14%	27	35%	49%	35%
2 LAZOVIC	45	58%	7	16%	9	20%	11	24%	44%	29%
8 SEKULIC	18	23%	2	11%	2	11%	8	44%	56%	44%
5 MILOJEVIC	11	14%	2	18%	0	0%	7	64%	64%	45%
3 MARTINOVIC	2	3%	0	0%	0	0%	1	50%	50%	50%
11 TASIC	2	3%	0	0%	0	0%	0	0%	0%	0%
4 JAKŠIC	0	0%	0	-	0	-	0	-	-	-

K1-Attacks after R#+	Σ	Σ %	=	= %	#	# %	Eff
SERBIA	37	100%	1	3%	17	46%	35%
7 KOCIC	28	76%	1	4%	13	46%	36%
8 SEKULIC	7	19%	0	0%	4	57%	57%
2 LAZOVIC	1	3%	0	0%	0	0%	0%
14 ASONJA	1	3%	0	0%	0	0%	-100%
3 MARTINOVIC	0	0%	0	-	0	-	-
4 JAKŠIC	0	0%	0	-	0	-	-
5 MILOJEVIC	0	0%	0	-	0	-	-

K2-Attacks - Transitio	Σ	Σ %	=	= %	#	# %	Eff
SERBIA	80	100%	3	4%	31	39%	31%
8 SEKULIC	50	63%	3	6%	22	44%	34%
2 LAZOVIC	16	20%	0	0%	4	25%	25%
7 KOCIC	6	8%	0	0%	3	50%	33%
3 MARTINOVIC	5	6%	0	0%	1	20%	20%
11 TASIC	2	3%	0	0%	1	50%	50%
10 VESELINOVIC	1	1%	0	0%	0	0%	0%
4 JAKŠIC	0	0%	0	-	0	-	-

Rotation 3

SERBIA



Distribution

Category	Value	%	Value	%
K1 after all R	54	39%	54%	
K1 after R#+	35	51%	60%	
K2 Transition	66	11%	30%	

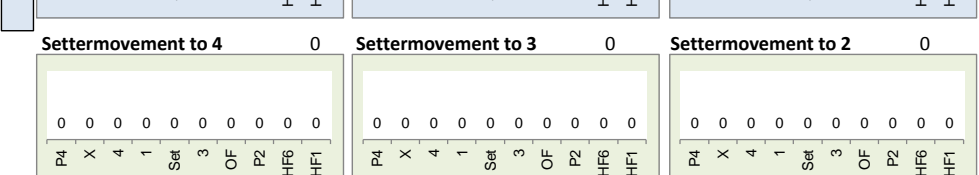
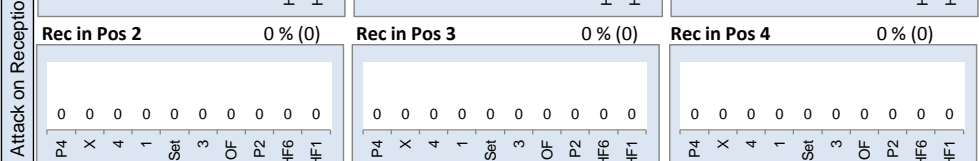
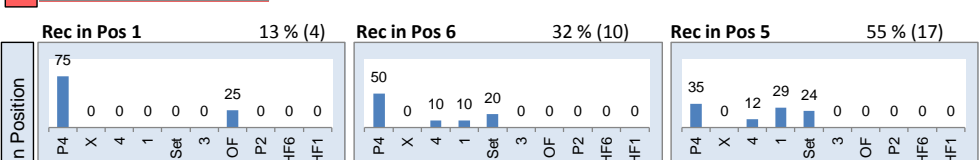
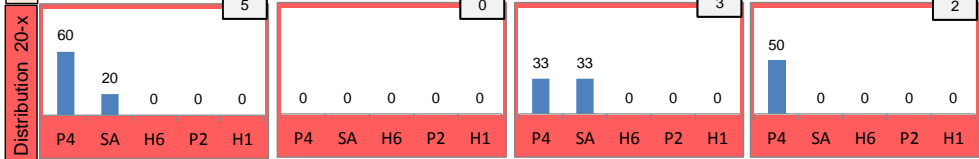
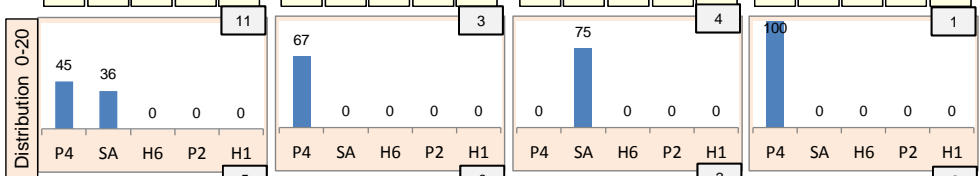
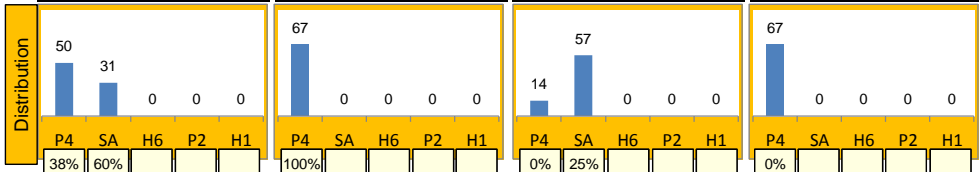
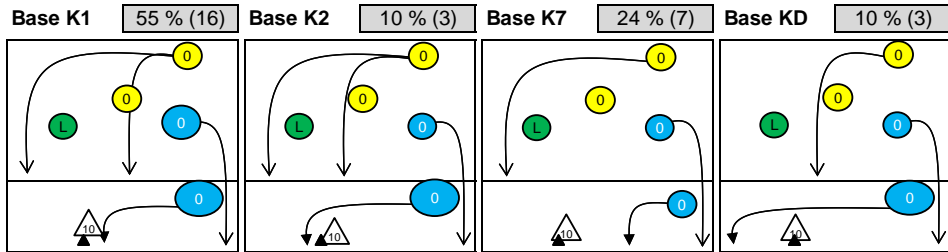
Reception	Σ	Σ %	=	= %	+	+ %	#	# %	+ # %	Eff
SERBIA	71	100%	11	15%	15	21%	22	31%	52%	37%
5 MILOJEVIC	28	39%	2	7%	7	25%	11	39%	64%	57%
8 SEKULIC	28	39%	7	25%	5	18%	7	25%	43%	18%
2 LAZOVIC	11	15%	1	9%	2	18%	4	36%	55%	45%
3 MARTINOVIC	1	1%	0	0%	0	0%	0	0%	0%	0%
10 VESELINOVIC	1	1%	0	0%	0	0%	0	0%	0%	0%
11 TASIC	1	1%	0	0%	1	100%	0	0%	100%	100%

K1-Attacks after R#+	Σ	Σ %	=	= %	#	# %	Eff
SERBIA	35	100%	2	6%	21	60%	51%
7 KOCIC	18	51%	0	0%	13	72%	67%
2 LAZOVIC	14	40%	1	7%	7	50%	43%
8 SEKULIC	3	9%	1	33%	1	33%	0%
3 MARTINOVIC	0	0%	0	-	0	-	-
4 JAKŠIC	0	0%	0	-	0	-	-
5 MILOJEVIC	0	0%	0	-	0	-	-
6 MILOJEVIC	0	0%	0	-	0	-	-

K2-Attacks - Transition	Σ	Σ %	=	= %	#	# %	Eff
SERBIA	66	100%	9	14%	20	30%	11%
2 LAZOVIC	52	79%	9	17%	16	31%	8%
7 KOCIC	6	9%	0	0%	2	33%	17%
8 SEKULIC	5	8%	0	0%	0	0%	0%
14 ASONJA	2	3%	0	0%	1	50%	50%
6 MILOJEVIC	1	2%	0	0%	1	100%	100%
3 MARTINOVIC	0	0%	0	-	0	-	-
4 JAKŠIC	0	0%	0	-	0	-	-

Rotation 2

SERBIA



Distribution

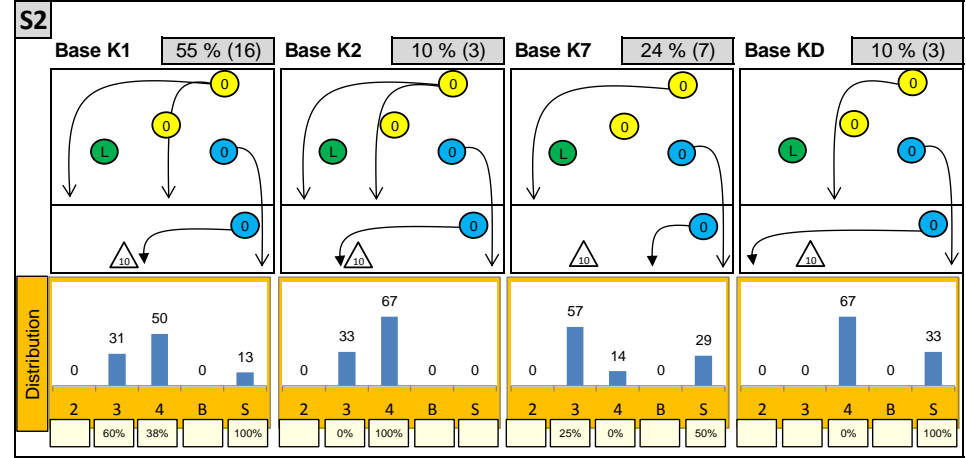
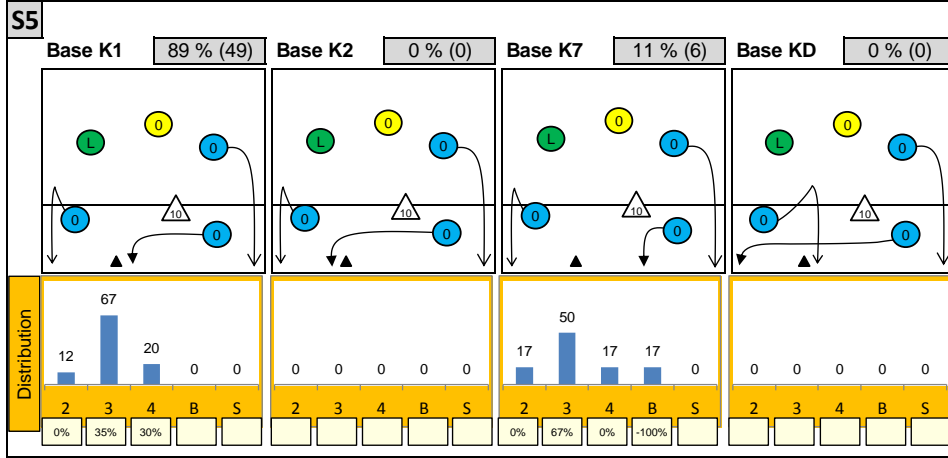
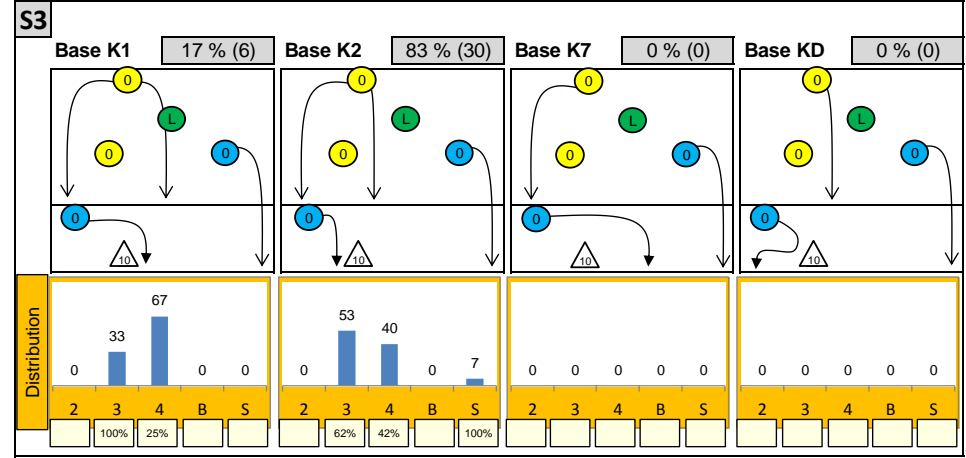
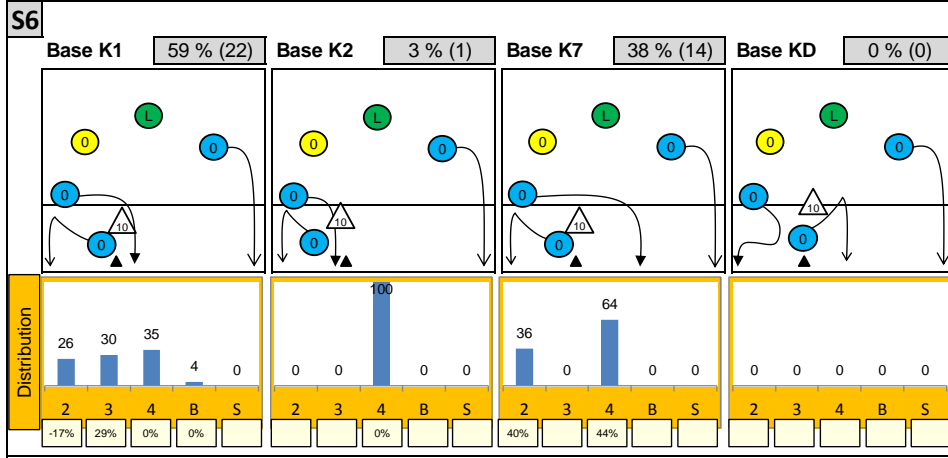
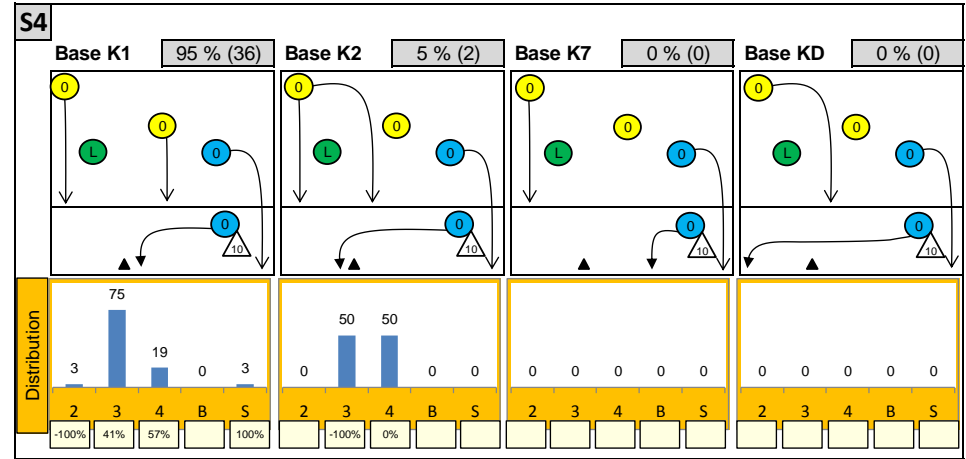
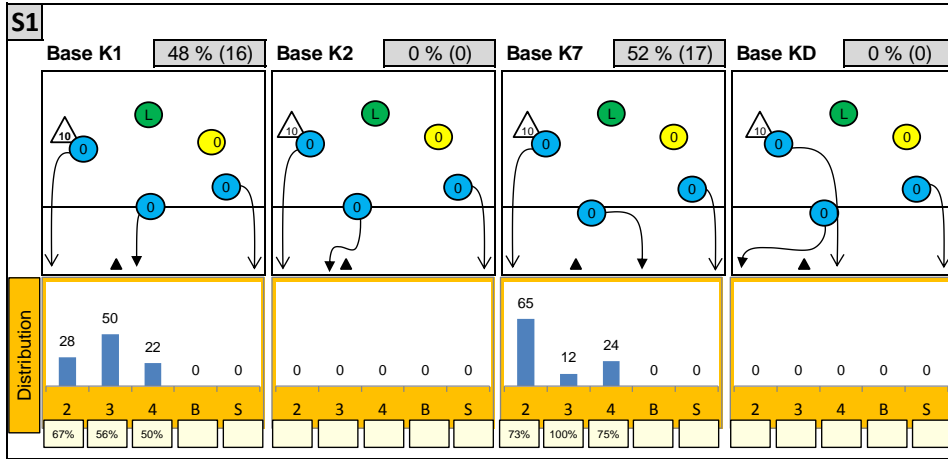
K1 after all R	51	27%	35%	K1 after R#+	25	36%	40%	K2 Transition	66	20%	39%						
2	4%	3	6%	0	-	0	-	0	-	3	5%	3	5%	0	-		
0%	0%	33%	33%	-	-	-	-	-	-	-33%	0%	-33%	0%	-	-		
1	2%	11	22%	33	65%	1	4%	9	36%	14	56%	0	-	2	3%	58	88%
0%	0%	55%	55%	21%	33%	0%	0%	44%	44%	36%	43%	-	-	100%	100%	22%	41%

Reception	Σ	Σ %	=/	=/ %	+	+ %	#	# %	+ # %	Eff
SERBIA	70	100%	4	6%	13	19%	18	26%	44%	39%
8 SEKULIC	32	46%	1	3%	6	19%	10	31%	50%	47%
2 LAZOVIC	24	34%	0	0%	4	17%	6	25%	42%	42%
5 MILOJEVIC	11	16%	2	18%	3	27%	1	9%	36%	18%
3 MARTINOVIC	3	4%	1	33%	0	0%	1	33%	33%	0%
4 JAKŠIĆ	0	0%	0	-	0	-	0	-	-	-
6 MILOJEVIC	0	0%	0	-	0	-	0	-	-	-

K1-Attacks after R#+	Σ	Σ %	=	= %	#	# %	Eff
SERBIA	25	100%	1	4%	10	40%	36%
2 LAZOVIC	14	56%	1	7%	6	43%	36%
9 RADMILOVIC	9	36%	0	0%	4	44%	44%
8 SEKULIC	1	4%	0	0%	0	0%	0%
10 VESELINOVIC	1	4%	0	0%	0	0%	0%
3 MARTINOVIC	0	0%	0	-	0	-	-
4 JAKŠIĆ	0	0%	0	-	0	-	-
5 MILOJEVIC	0	0%	0	-	0	-	-

K2-Attacks - Transitio	Σ	Σ %	=	= %	#	# %	Eff
SERBIA	66	100%	8	12%	26	39%	20%
2 LAZOVIC	56	85%	6	11%	23	41%	23%
9 RADMILOVIC	4	6%	1	25%	3	75%	50%
8 SEKULIC	3	5%	0	0%	0	0%	-33%
14 ASONJA	2	3%	0	0%	0	0%	0%
18 STOJKOVIC	1	2%	1	100%	0	0%	-100%
3 MARTINOVIC	0	0%	0	-	0	-	-
4 JAKŠIĆ	0	0%	0	-	0	-	-

Attackdistribution depending on Settercalls - SERBIA



2: Attack of Opposite

3: Attack of Middleblocker

4: Attack of Outside

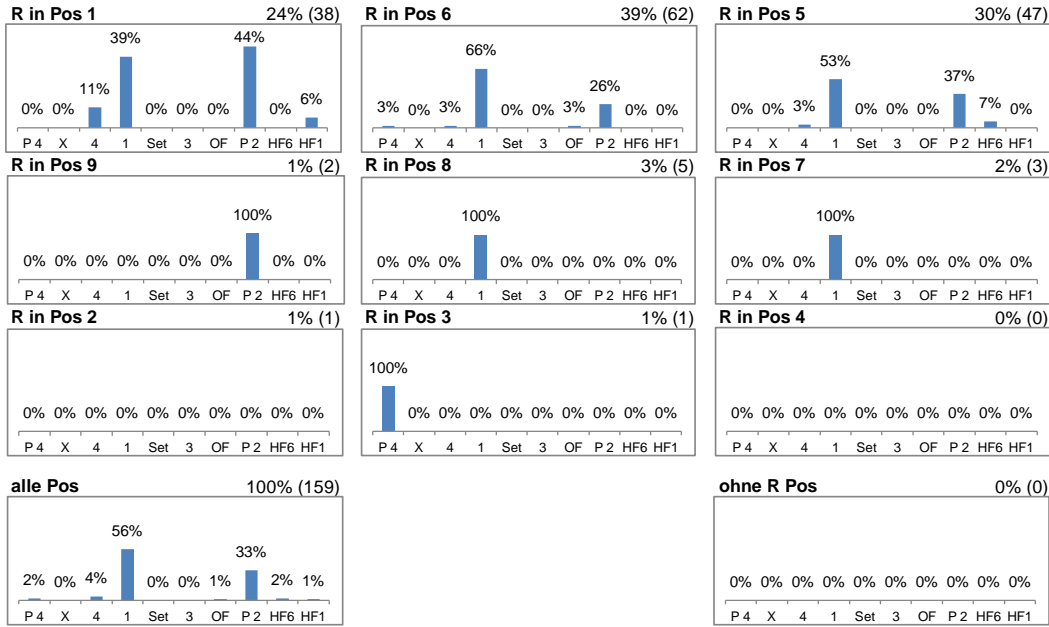
B: Attack of Backrow

S: Attack of Setter

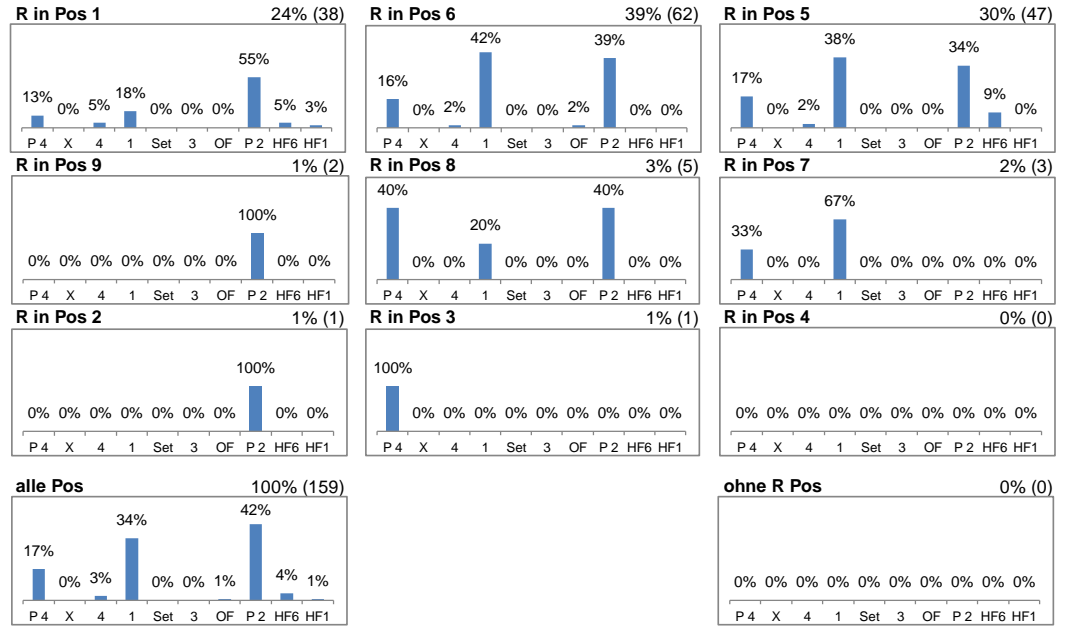
xx%: Efficiency of Attacks (-100% to +100%)

Attacks depending on Reception Position - SERBIA

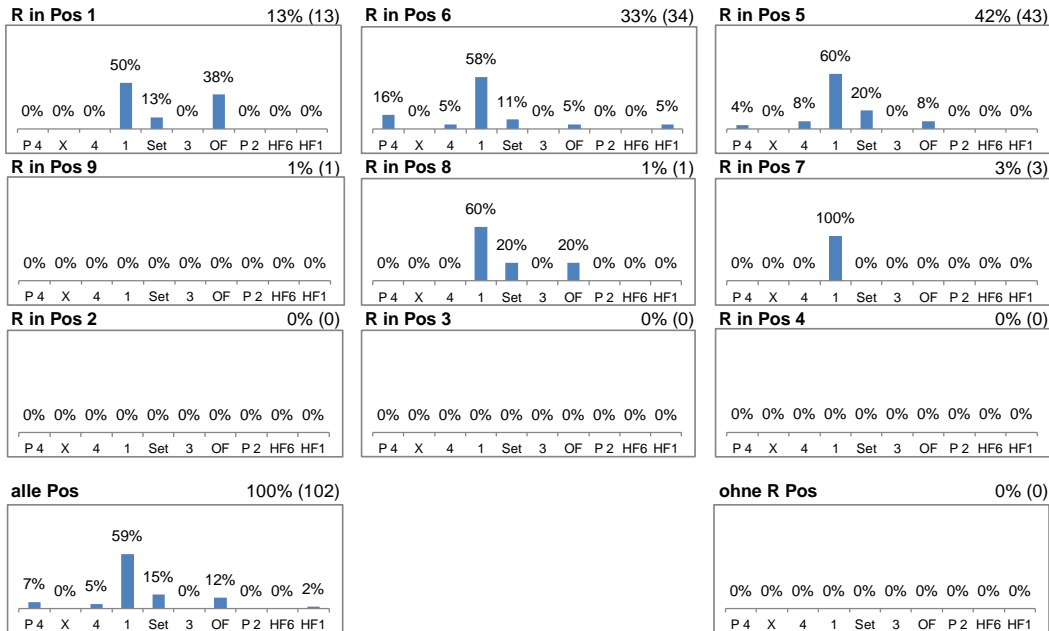
Setter back (S1, S6, S5) - R#+



Setter back (S1, S6, S5) - all Receptions



Setter front (S4, S3, S2) - R#+



Setter front (S4, S3, S2) - all Receptions

