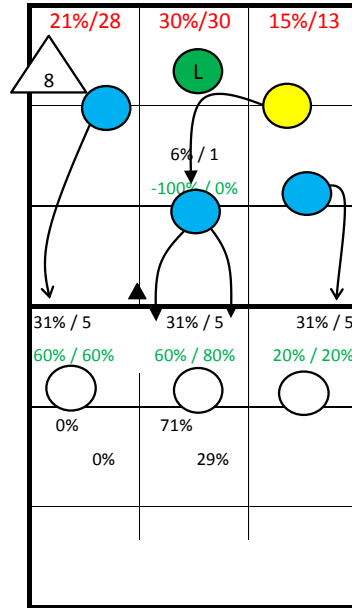


Roster

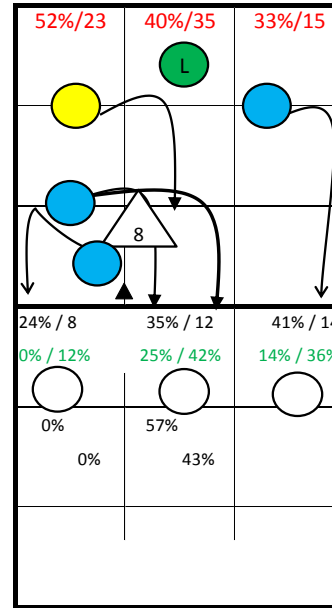
- | | |
|--------------|-----|
| 1 CARRARO | Set |
| 2 MASIERO | Out |
| 3 BARTESAGHI | Out |
| 5 LUBIAN | MB |
| 6 ZANNONI | Lib |
| 8 ORRO | Set |
| 9 TENTI | Out |
| 10 PAMIO | Out |
| 11 MANCINI | MB |
| 12 MAZZARO | MB |
| 14 EGONU | Out |
| 19 PIANI | Opp |

ITALY -

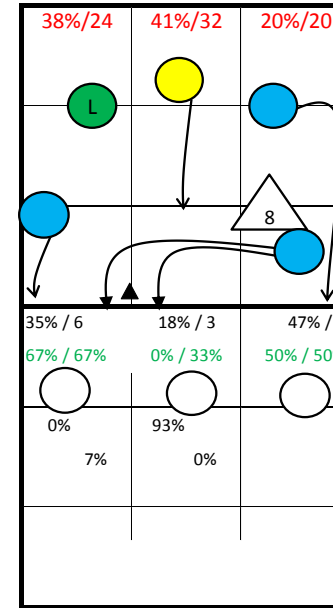
8: Jumpfloat at Position 1



S1



S6



S5



S1



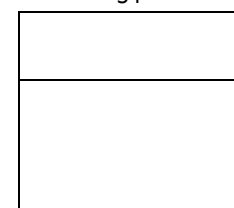
S6



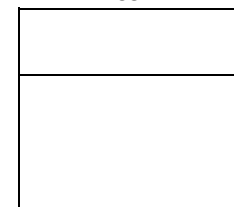
S5



S4

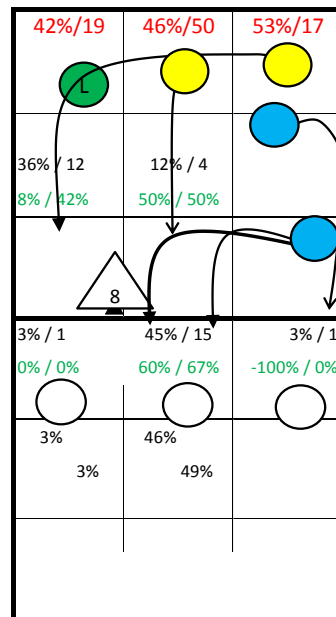
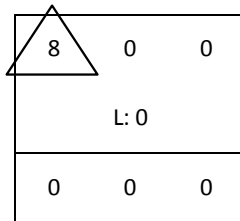


S3

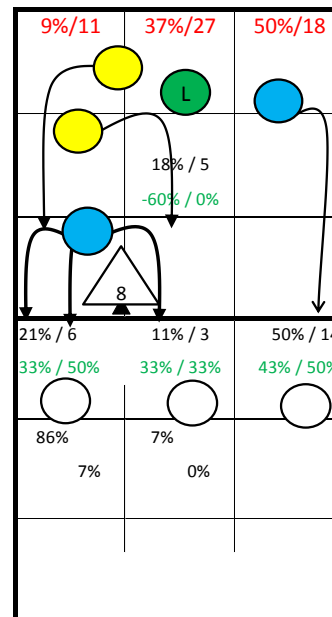


S2

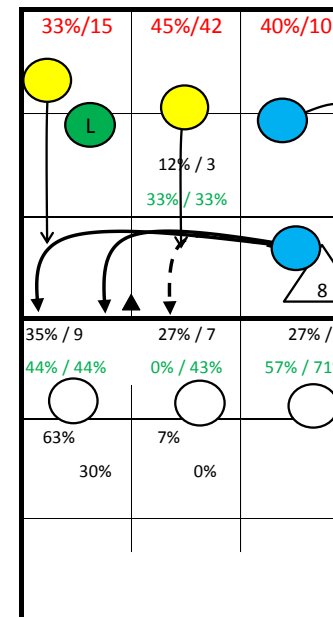
Starting Lineup:



S2

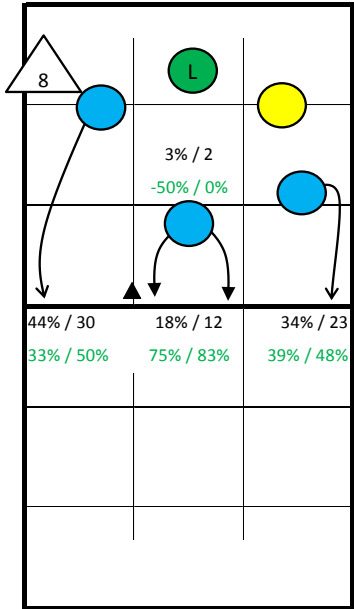


S3

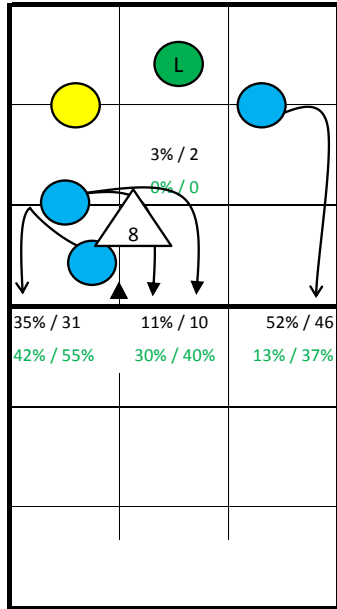


S4

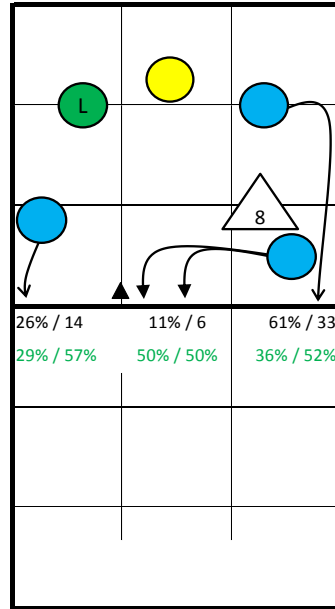
ITALY -



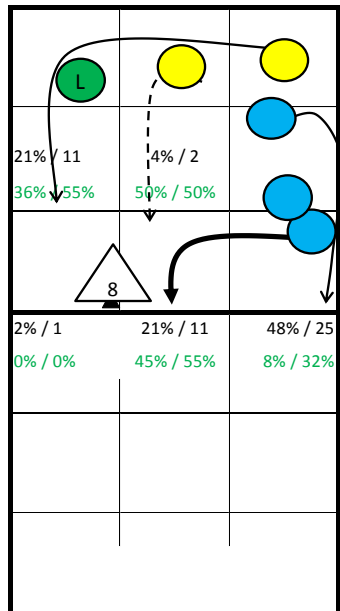
S1



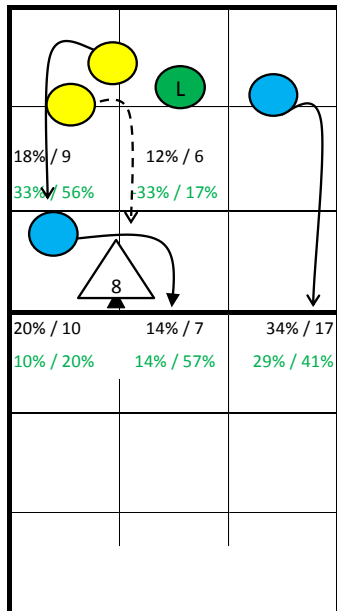
S6



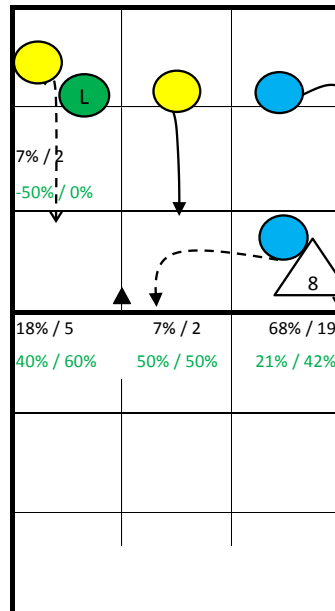
S5



S2



S3



S4

Notes:

ITALY - all Statistics

pld Set	Points					Serve								Reception										Attack											
	pts	P/s	easy=	all=	W-L	Σ	=	-	+	#	=%	#%	eff%	Σ	in %	=	/	-	+	#	=/%	+##%	#%	eff%	Σ	in %	=	/	!	+	#	=/%	#%	eff%	
ITALY	25	425	17,0	161	380	45	564	73	147	268	76	13%	13%	48%	433		53	13	200	57	110	15%	38%	25%	23%	667		74	49	10	136	293	18%	44%	25%
1 CARRARO	4	2	0,5		4	-2	7	0	4	2	1	0%	14%	43%	0											0									
2 MASIERO	19	3	0,2	1	6	-3	20	1	9	8	2	5%	10%	45%	28	6%	3	0	9	5	11	11%	57%	39%	46%	5	1%	0	0	0	2	1	0%	20%	20%
3 BARTESAGHI	4	2	0,5	2	8	-6	9	1	3	4	1	11%	11%	44%	19	4%	2	1	7	5	4	16%	47%	21%	32%	8	1%	1	2	0	1	1	38%	12%	-25%
5 LUBIAN	14	24	1,7	4	10	14	31	1	11	17	2	3%	6%	58%	0											25	4%	3	1	0	8	12	16%	48%	32%
6 ZANNONI	25	0			21	-21	0							103	24%	14	2	40	13	34	16%	46%	33%	30%	0										
8 ORRO	25	27	1,1	15	38	-11	91	5	30	49	7	5%	8%	56%	0											20	3%	2	2	0	2	12	20%	60%	40%
9 TENTI	6	4	0,7	3	5	-1	3	1	0	2	0	33%	0%	33%	5	1%	0	0	2	1	2	0%	60%	40%	60%	13	2%	2	1	0	2	3	23%	23%	0%
10 PAMIO	24	66	2,8	21	53	13	94	7	20	55	12	7%	13%	64%	134	31%	14	2	70	20	28	12%	36%	21%	24%	121	18%	11	9	1	29	51	17%	42%	26%
11 MANCINI	15	19	1,3	5	18	1	47	4	11	27	5	9%	11%	60%	1	0%	0	0	1	0	0	0%	0%	0%	0%	22	3%	1	2	1	7	7	14%	32%	18%
12 MAZZARO	25	55	2,2	11	35	20	106	7	34	53	12	7%	11%	55%	0											59	9%	3	5	2	11	29	14%	49%	36%
14 EGONU	25	124	5,0	54	107	17	87	19	17	30	21	22%	24%	37%	142	33%	20	8	71	13	30	20%	30%	21%	11%	214	32%	34	13	1	36	97	22%	45%	23%
19 PIANI	25	99	4,0	45	75	24	69	27	8	21	13	39%	19%	10%	1	0%	0	0	0	0	1	0%	100%	100%	100%	180	27%	17	14	5	38	80	17%	44%	27%

	Block						Defense						Freeball					Set		
	Σ	=	+	#	#%	eff%	Σ	=	/-!	+#	+##%	eff%	Σ	err	bad	god	eff%	Σ	=	eff%
ITALY	238	87	65	56	24%	14%	152	31	42	79	52%	61%	32	2	12	18	50%	252	11	51%
1 CARRARO	3	1	1	1	33%	33%	4	3	1	0	0%	25%	0					11	0	18%
2 MASIERO	0						6	2	0	4	67%	67%	3	0	0	3	100%	0		
3 BARTESAGHI	2	1	0	0	0%	-50%	3	1	0	2	67%	67%	1	0	0	1	100%	0		
5 LUBIAN	22	5	4	10	45%	41%	3	0	0	3	100%	100%	0					0		
6 ZANNONI	0						33	7	11	15	45%	48%	5	0	3	2	40%	10	0	0%
8 ORRO	35	16	8	8	23%	0%	27	5	11	11	41%	44%	1	0	1	0	0%	215	8	60%
9 TENTI	1	0	0	1	100%	100%	4	1	0	3	75%	75%	0					1	0	0%
10 PAMIO	17	7	5	3	18%	6%	24	2	4	18	75%	83%	9	2	2	5	33%	5	1	-20%
11 MANCINI	30	11	6	7	23%	7%	4	0	2	2	50%	75%	2	0	0	2	100%	1	0	0%
12 MAZZARO	61	16	26	14	23%	39%	7	3	2	2	29%	43%	3	0	0	3	100%	3	1	-33%
14 EGONU	31	15	5	6	19%	-13%	22	5	9	8	36%	59%	3	0	3	0	0%	2	1	-50%
19 PIANI	36	15	10	6	17%	3%	15	2	2	11	73%	80%	5	0	3	2	40%	4	0	25%

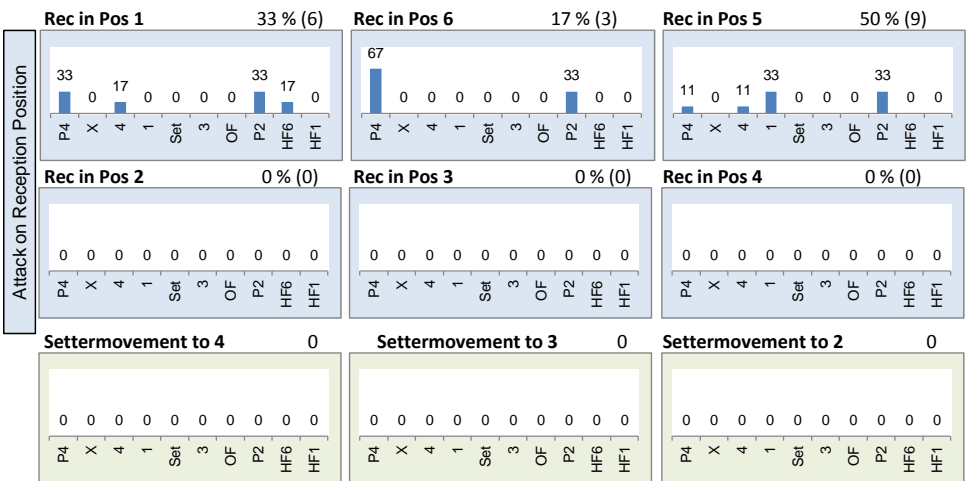
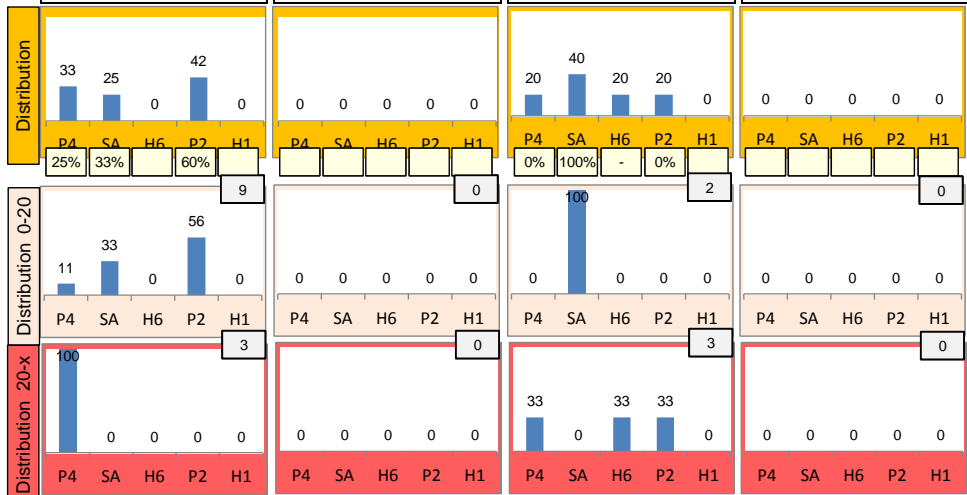
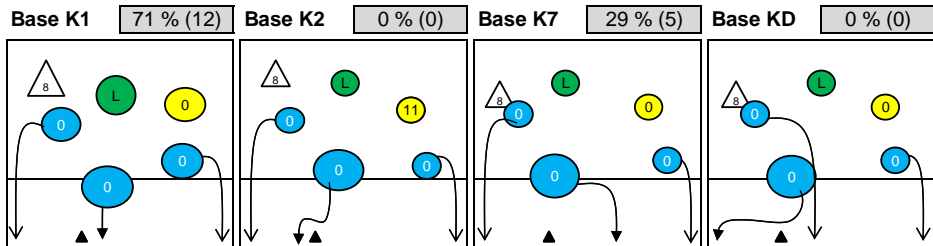
pld Set played Sets
 P/s Points per Set
 pts Points
 easy= easy errors (serve, net contact, ...)
 all= all errors
 W-L points - errors
 Σ sum of all events
 in % in percent of all team events

ITALY - Attack-Statistic

	K1 & K2 Attacks							K1 All Attacks							K2 Attacks							K1 aft R other Ply				K1 after own Rec						
	Σ	in %	=	/	#	=/%	##	eff	Σ	in %	=	/	#	=/%	##	eff	Σ	in %	=	/	#	=/%	##	eff	sum	#	##	eff	sum	#	##	eff
ITALY	619		70	45	264	19%	43%	24%	295		37	19	119	19%	40%	21%	324		33	26	145	18%	45%	27%	261	107	41%		34	12	35%	
14 EGONU	210	34%	33	13	94	22%	45%	23%	95	32%	17	6	42	24%	44%	20%	115	35%	16	7	52	20%	45%	25%	74	35	47%	27%	21	7	33%	-5%
19 PIANI	176	28%	17	14	79	18%	45%	27%	84	28%	7	4	32	13%	38%	25%	92	28%	10	10	47	22%	51%	29%	84	32	38%	25%	0			
10 PAMIO	112	18%	11	8	44	17%	39%	22%	52	18%	7	3	20	19%	38%	19%	60	19%	4	5	24	15%	40%	25%	41	15	37%	15%	11	5	45%	36%
12 MAZZARO	55	9%	3	4	27	13%	49%	36%	31	11%	1	3	15	13%	48%	35%	24	7%	2	1	12	13%	50%	38%	31	15	48%	35%	0			
5 LUBIAN	22	4%	3	1	9	18%	41%	23%	15	5%	2	1	7	20%	47%	27%	7	2%	1	0	2	14%	29%	14%	15	7	47%	27%	0			
11 MANCINI	18	3%	0	2	6	11%	33%	22%	5	2%	0	0	1	0%	20%	20%	13	4%	0	2	5	15%	38%	23%	5	1	20%	20%	0			
9 TENTI	13	2%	2	1	3	23%	23%	0%	7	2%	2	1	2	43%	29%	-14%	6	2%	0	0	1	0%	17%	17%	7	2	29%	-14%	0			
3 BARTESAGHI	8	1%	1	2	1	38%	12%	-25%	4	1%	1	1	0	50%	0%	-50%	4	1%	0	1	1	25%	25%	0%	3	0	0%	-67%	1	0	0%	0%
2 MASIERO	5	1%	0	0	1	0%	20%	20%	2	1%	0	0	0	0%	0%	0%	3	1%	0	0	1	0%	33%	33%	1	0	0%	0%	1	0	0%	0%
1 CARRARO	0								0								0								0				0			
6 ZANNONI	0								0								0								0				0			
8 ORRO	0								0								0								0				0			

	K1 after R#+							K1 after R-!							Freeball-Attacks									
	Σ	in %	=	/	#	=/%	##	eff	Σ	in %	=	/	#	=/%	##	eff	Σ	in %	=	/	#	=/%	##	eff
ITALY	150		15	8	63	15%	42%	27%	145		22	11	56	23%	39%	16%	11		1	1	5	18%	45%	27%
14 EGONU	40	27%	7	2	18	23%	45%	23%	55	38%	10	4	24	25%	44%	18%	0							
19 PIANI	37	25%	4	2	11	16%	30%	14%	47	32%	3	2	21	11%	45%	34%	3	150%	1	0	2	33%	67%	33%
10 PAMIO	20	13%	2	0	11	10%	55%	45%	32	22%	5	3	9	25%	28%	3%	2	0	0	0	0	0%	0%	0%
12 MAZZARO	30	20%	1	3	15	13%	50%	37%	1	1%	0	0	0	0%	0%	0%	2	200%	0	0	1	0%	50%	50%
5 LUBIAN	14	9%	1	1	7	14%	50%	36%	1	1%	1	0	0	100%	0%	-100%	0							
11 MANCINI	5	3%	0	0	1	0%	20%	20%	0								4	200%	0	1	2	25%	50%	25%
9 TENTI	1	1%	0	0	0	0%	0%	0%	6	4%	2	1	2	50%	33%	-17%	0							
3 BARTESAGHI	1	1%	0	0	0	0%	0%	0%	3	2%	1	1	0	67%	0%	-67%	0							
2 MASIERO	2	1%	0	0	0	0%	0%	0%	0								0							
1 CARRARO	0								0								0							
6 ZANNONI	0								0								0							
8 ORRO	0								0								0							

Rotation 1 ITALY



Distribution

Base	Value	Percentage	Count	Percentage	Count	Percentage
Base K1	71 %	(12)	40	30%	40%	
Base K2	0 %	(0)	18	33%	44%	
Base K7	29 %	(5)	67	37%	52%	
Base KD	0 %	(0)				

Reception	Σ	Σ %	=	= %	+	+ %	#	# %	+ # %	Eff
ITALY	68	100%	17	25%	6	9%	12	18%	26%	1%
14 EGONU	27	40%	8	30%	1	4%	5	19%	22%	-7%
6 ZANNONI	20	29%	6	30%	2	10%	2	10%	20%	-10%
10 PAMIO	13	19%	2	15%	2	15%	3	23%	38%	23%
3 BARTESAGHI	4	6%	0	0%	0	0%	1	25%	25%	25%
2 MASIERO	2	3%	1	50%	1	50%	0	0%	50%	0%
9 TENTI	1	1%	0	0%	0	0%	0	0%	0%	0%

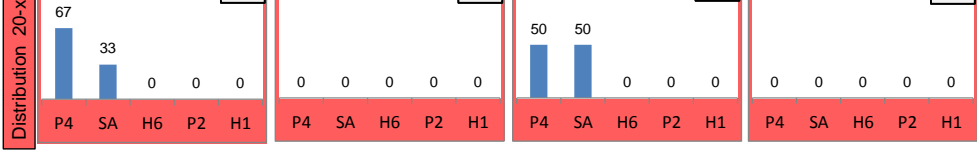
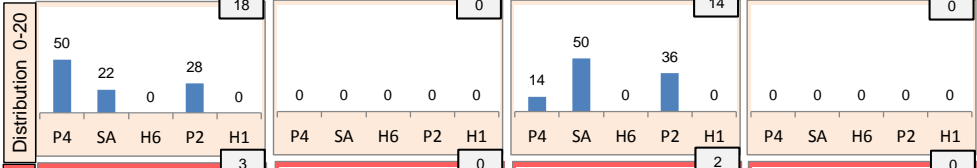
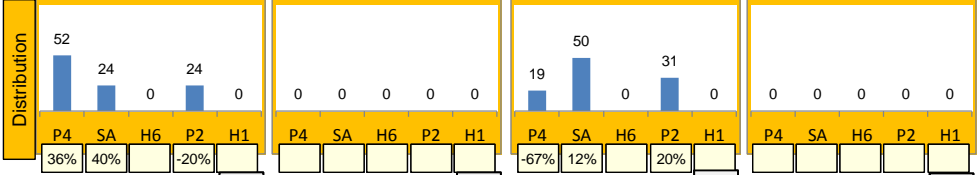
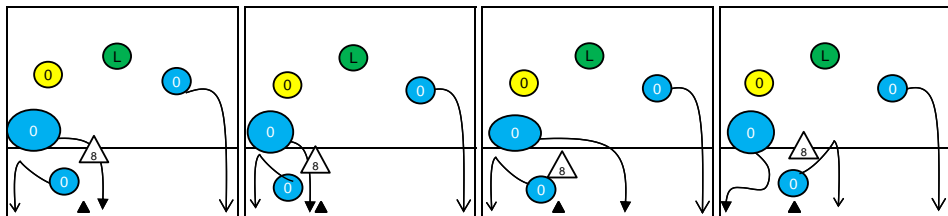
K1-Attacks after R#+	Σ	Σ %	=	= %	#	# %	Eff
ITALY	18	100%	1	6%	8	44%	33%
10 PAMIO	5	28%	0	0%	3	60%	60%
12 MAZZARO	5	28%	0	0%	4	80%	60%
19 PIANI	4	22%	0	0%	1	25%	25%
2 MASIERO	2	11%	0	0%	0	0%	0%
9 TENTI	1	6%	0	0%	0	0%	0%
14 EGONU	1	6%	1	100%	0	0%	-100%
1 CARRARO	0	0%	0	-	0	-	-

K2-Attacks - Transitor	Σ	Σ %	=	= %	#	# %	Eff
ITALY	67	100%	5	7%	35	52%	37%
19 PIANI	30	45%	2	7%	16	53%	37%
10 PAMIO	20	30%	1	5%	9	45%	35%
12 MAZZARO	11	16%	1	9%	8	73%	55%
2 MASIERO	2	3%	0	0%	1	50%	50%
3 BARTESAGHI	2	3%	0	0%	1	50%	50%
14 EGONU	2	3%	1	50%	0	0%	-50%
1 CARRARO	0	0%	0	-	0	-	-

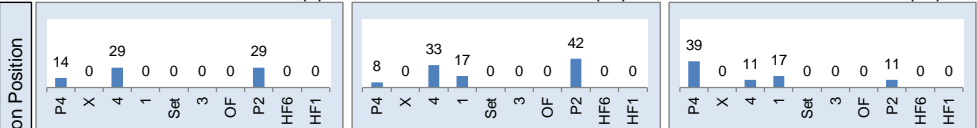
Rotation 6

ITALY

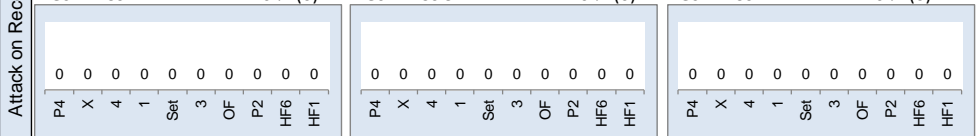
Base K1 57% (21) Base K2 0% (0) Base K7 43% (16) Base KD 0% (0)



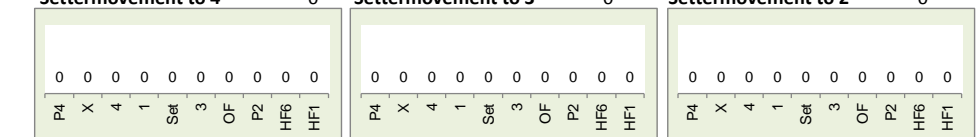
Rec in Pos 1 19% (7) Rec in Pos 6 32% (12) Rec in Pos 5 49% (18)



Rec in Pos 2 0% (0) Rec in Pos 3 0% (0) Rec in Pos 4 0% (0)



Settermovement to 4 0 Settermovement to 3 0 Settermovement to 2 0



Distribution

K1 after all R 67 13% 33% K1 after R#+ 37 14% 30% K2 Transition 87 24% 43%

Base	P4	SA	H6	P2	H1	
K1 after all R	22	33%	13	19%	32	48%
K1 after R#+	10	27%	13	35%	14	38%
K2 Transition	31	36%	6	7%	50	57%

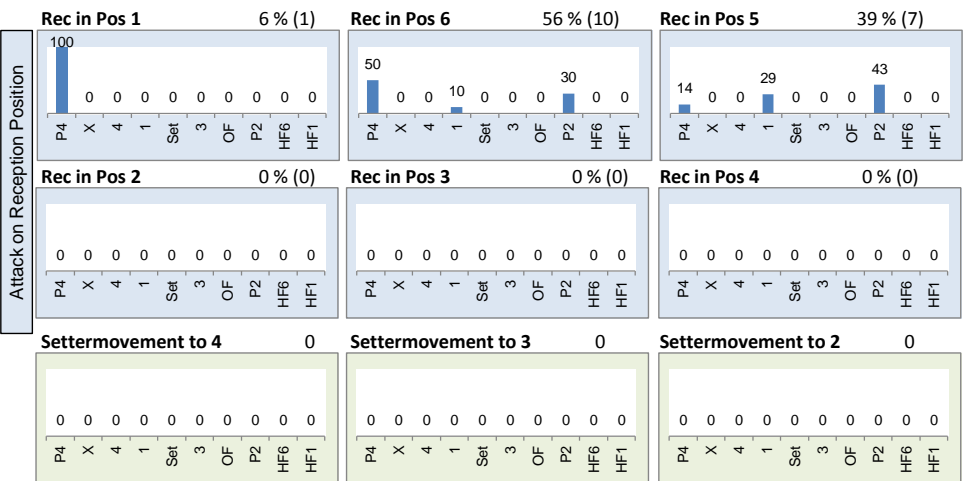
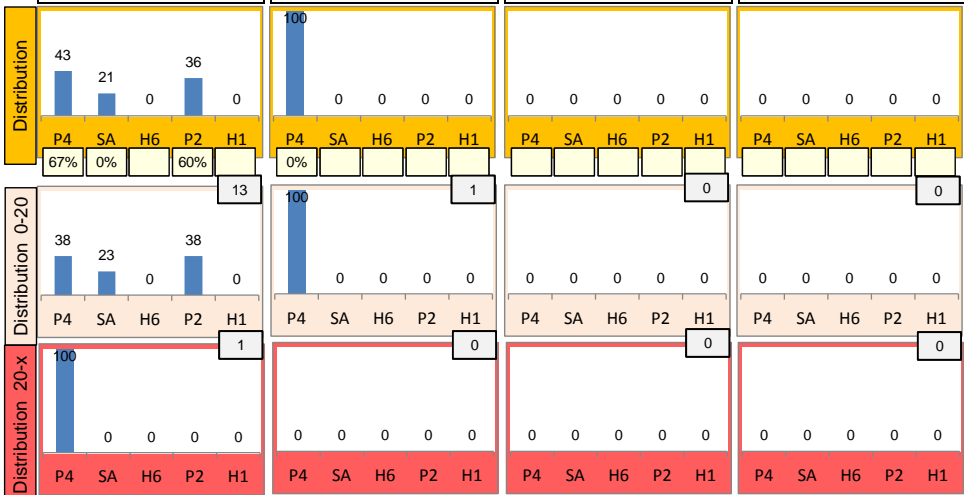
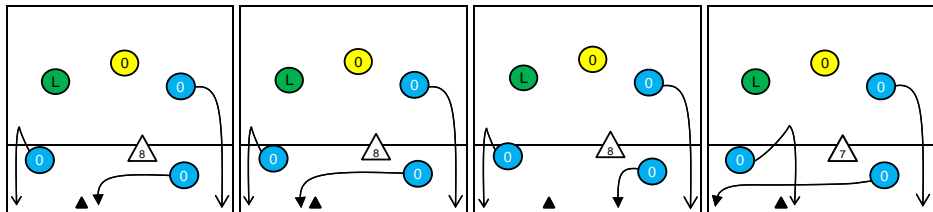
Reception	Σ	Σ %	=/	=/ %	+	+ %	#	# %	+ # %	Eff
ITALY	81	100%	7	9%	12	15%	25	31%	46%	37%
6 ZANNONI	32	40%	2	6%	3	9%	16	50%	59%	53%
14 EGONU	25	31%	4	16%	4	16%	6	24%	40%	24%
10 PAMIO	15	19%	1	7%	2	13%	2	13%	27%	20%
3 BARTESAGHI	7	9%	0	0%	3	43%	1	14%	57%	57%
2 MASIERO	1	1%	0	0%	0	0%	0	0%	0%	0%
9 TENTI	1	1%	0	0%	0	0%	0	0%	0%	0%

K1-Attacks after R#+	Σ	Σ %	=	= %	#	# %	Eff
ITALY	37	100%	2	5%	11	30%	14%
14 EGONU	14	38%	2	14%	5	36%	14%
12 MAZZARO	13	35%	0	0%	5	38%	23%
19 PIANI	10	27%	0	0%	1	10%	0%
1 CARRARO	0	0%	0	-	0	-	-
2 MASIERO	0	0%	0	-	0	-	-
3 BARTESAGHI	0	0%	0	-	0	-	-
5 LUBIAN	0	0%	0	-	0	-	-

K2-Attacks - Transiti	Σ	Σ %	=	= %	#	# %	Eff
ITALY	87	100%	13	15%	37	43%	24%
14 EGONU	47	54%	9	19%	17	36%	11%
19 PIANI	31	36%	4	13%	17	55%	42%
12 MAZZARO	6	7%	0	0%	2	33%	33%
9 TENTI	3	3%	0	0%	1	33%	33%
1 CARRARO	0	0%	0	-	0	-	-
2 MASIERO	0	0%	0	-	0	-	-
3 BARTESAGHI	0	0%	0	-	0	-	-

Rotation 5 ITALY

Base K1 93% (14) Base K2 7% (1) Base K7 0% (0) Base KD 0% (0)



Distribution

K1 after all R 47 38% 51% K1 after R#+ 18 39% 50% K2 Transition 52 37% 54%

	0	-	0	-	0	-
0	-	0	-	0	-	0
-	-	-	-	-	-	-
16	34%	3	6%	28	60%	
50%	56%	0%	33%	36%	50%	

	0	-	0	-	0	-
0	-	0	-	0	-	0
-	-	-	-	-	-	-
7	39%	3	17%	8	44%	
43%	57%	0%	33%	50%	50%	

	0	-	0	-	0	-
0	-	0	-	0	-	0
-	-	-	-	-	-	-
14	27%	4	8%	34	65%	
29%	57%	50%	50%	38%	53%	

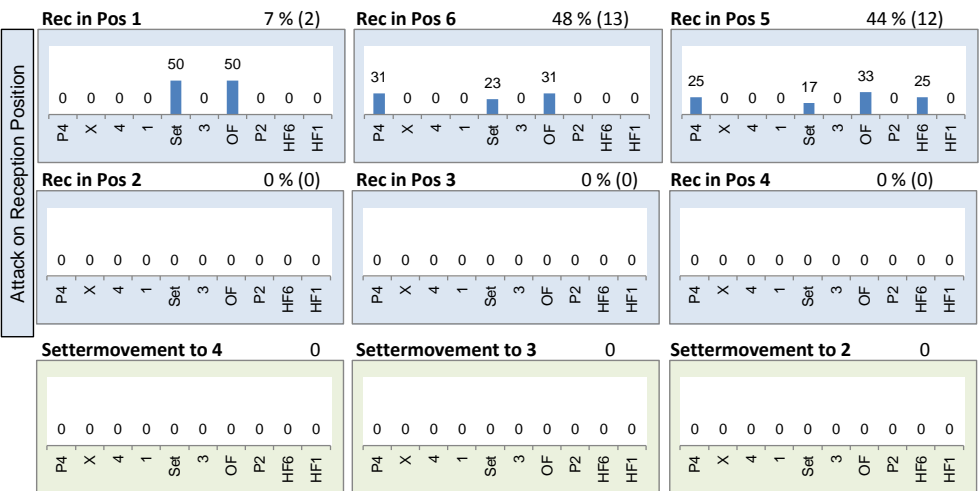
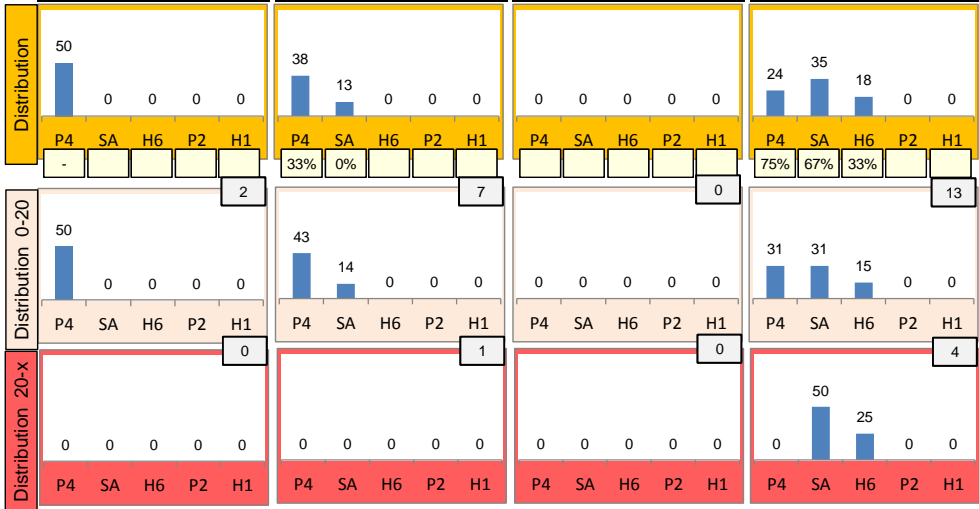
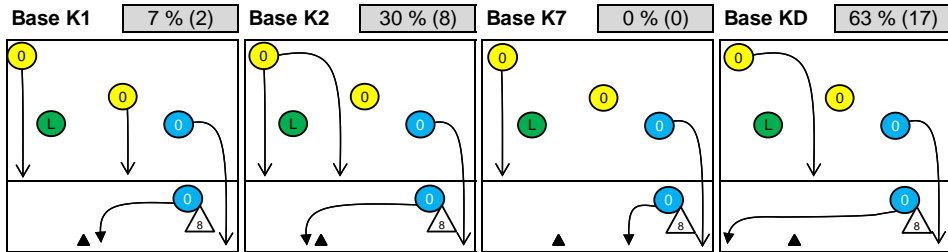
Reception	Σ	Σ %	=	= %	+	+ %	#	# %	+ # %	Eff
ITALY	65	100%	12	18%	9	14%	9	14%	28%	9%
10 PAMIO	40	62%	5	13%	6	15%	6	15%	30%	18%
14 EGONU	17	26%	5	29%	0	0%	3	18%	18%	-12%
6 ZANNONI	5	8%	1	20%	1	20%	0	0%	20%	0%
3 BARTESAGHI	2	3%	1	50%	1	50%	0	0%	50%	0%
9 TENTI	1	2%	0	0%	1	100%	0	0%	100%	100%
1 CARRARO	0	0%	0	-	0	-	0	-	-	-

K1-Attacks after R#+	Σ	Σ %	=	= %	#	# %	Eff
ITALY	18	100%	1	6%	9	50%	39%
14 EGONU	8	44%	0	0%	4	50%	50%
19 PIANI	7	39%	1	14%	4	57%	43%
5 LUBIAN	2	11%	0	0%	1	50%	0%
11 MANCINI	1	6%	0	0%	0	0%	0%
1 CARRARO	0	0%	0	-	0	-	-
2 MASIERO	0	0%	0	-	0	-	-
3 BARTESAGHI	0	0%	0	-	0	-	-

K2-Attacks - Transitor	Σ	Σ %	=	= %	#	# %	Eff
ITALY	52	100%	4	8%	28	54%	37%
14 EGONU	33	63%	2	6%	18	55%	42%
19 PIANI	14	27%	1	7%	8	57%	29%
11 MANCINI	3	6%	0	0%	2	67%	67%
5 LUBIAN	1	2%	0	0%	0	0%	0%
12 MAZZARO	1	2%	1	100%	0	0%	-100%
1 CARRARO	0	0%	0	-	0	-	-
2 MASIERO	0	0%	0	-	0	-	-

Rotation 4

ITALY



Distribution

K1 after all R			K1 after R#+			K2 Transition			
42	31%	50%	21	38%	48%	27	22%	44%	
2	5%	3	7%	0	-	2	7%	0	-
-50%	0%	33%	33%	-	-	-50%	0%	-	-
10	24%	1	2%	26	62%	5	19%	0	-
30%	40%	0%	0%	38%	62%	40%	60%	-	-

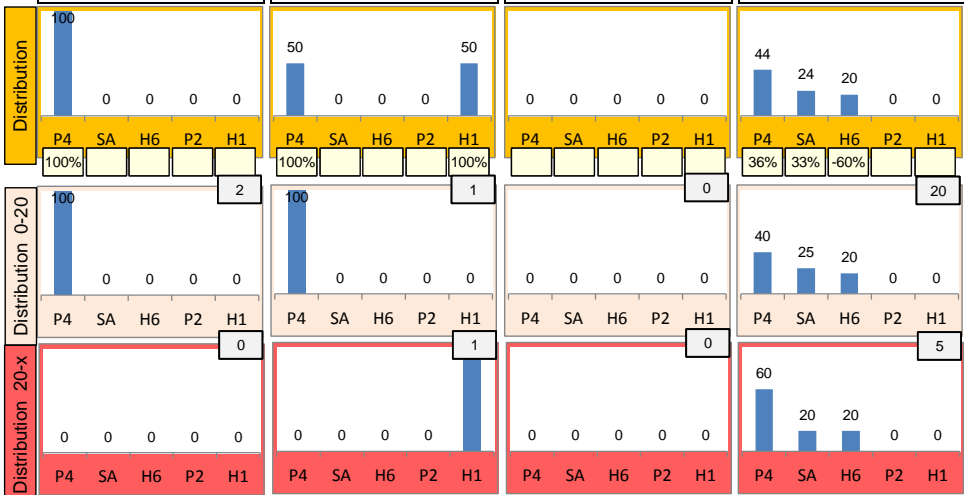
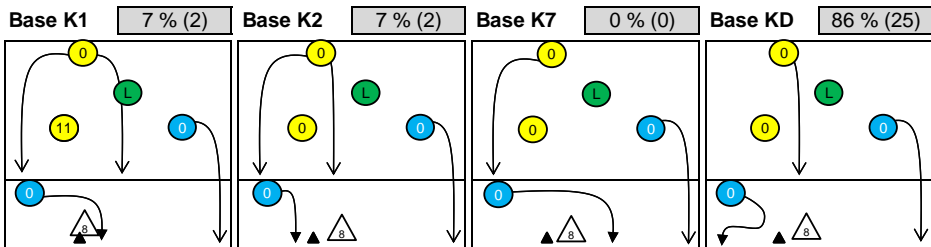
Reception	Σ	Σ %	=/	=/ %	+	+ %	#	# %	+ # %	Eff
ITALY	73	100%	12	16%	9	12%	18	25%	37%	21%
10 PAMIO	35	48%	3	9%	7	20%	8	23%	43%	34%
14 EGONU	20	27%	5	25%	2	10%	2	10%	20%	-5%
6 ZANNONI	9	12%	3	33%	0	0%	5	56%	56%	22%
2 MASIERO	6	8%	1	17%	0	0%	2	33%	33%	17%
3 BARTESAGHI	1	1%	0	0%	0	0%	0	0%	0%	0%
9 TENTI	1	1%	0	0%	0	0%	1	100%	100%	100%

K1-Attacks after R#+	Σ	Σ %	=	= %	#	# %	Eff
ITALY	21	100%	2	10%	10	48%	38%
14 EGONU	8	38%	2	25%	5	63%	38%
5 LUBIAN	6	29%	0	0%	3	50%	50%
11 MANCINI	4	19%	0	0%	1	25%	25%
19 PIANI	3	14%	0	0%	1	33%	33%
1 CARRARO	0	0%	0	-	0	-	-
2 MASIERO	0	0%	0	-	0	-	-
3 BARTESAGHI	0	0%	0	-	0	-	-

K2-Attacks - Transitio	Σ	Σ %	=	= %	#	# %	Eff
ITALY	27	100%	3	11%	12	44%	22%
14 EGONU	18	67%	2	11%	9	50%	28%
11 MANCINI	4	15%	0	0%	2	50%	25%
9 TENTI	2	7%	0	0%	0	0%	0%
19 PIANI	2	7%	1	50%	0	0%	-50%
5 LUBIAN	1	4%	0	0%	1	100%	100%
1 CARRARO	0	0%	0	-	0	-	-
2 MASIERO	0	0%	0	-	0	-	-

Rotation 3

ITALY



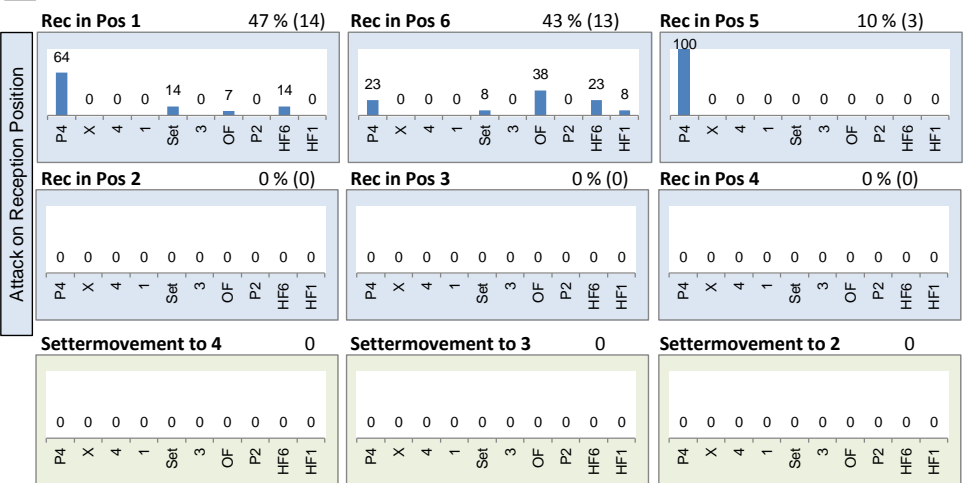
Distribution

K1 after all R			K1 after R#+			K2 Transition					
	49	12% 37%		27	26% 44%		44	11% 34%			
1	2%	5 10%	0 -	1	4%	5 19%	0 -	10	23%	6 14%	0 -
100%	100%	-60% 0%	- -	100%	100%	-60% 0%	- -	20%	50%	-33% 17%	- -
6	12%	0 -	37 76%	6	22%	0 -	15 56%	10	23%	1 2%	17 39%
33%	50%	- -	16% 38%	33%	50%	- -	47% 53%	10%	20%	-100% 0%	29% 41%

Reception	Σ	Σ %	=	= %	+	+ %	#	# %	+ # %	Eff
ITALY	69	100%	8	12%	12	17%	19	28%	45%	33%
14 EGONU	26	38%	4	15%	3	12%	8	31%	42%	27%
6 ZANNONI	20	29%	2	10%	4	20%	6	30%	50%	40%
10 PAMIO	13	19%	2	15%	2	15%	1	8%	23%	8%
2 MASIERO	9	13%	0	0%	2	22%	4	44%	67%	67%
3 BARTESAGHI	1	1%	0	0%	1	100%	0	0%	100%	100%
1 CARRARO	0	0%	0	-	0	-	0	-	-	-

K1-Attacks after R#+	Σ	Σ %	=	= %	#	# %	Eff
ITALY	27	100%	4	15%	12	44%	26%
10 PAMIO	14	52%	1	7%	8	57%	50%
5 LUBIAN	6	22%	1	17%	3	50%	33%
14 EGONU	3	11%	1	33%	0	0%	-67%
19 PIANI	3	11%	1	33%	1	33%	0%
3 BARTESAGHI	1	4%	0	0%	0	0%	0%
1 CARRARO	0	0%	0	-	0	-	-
2 MASIERO	0	0%	0	-	0	-	-

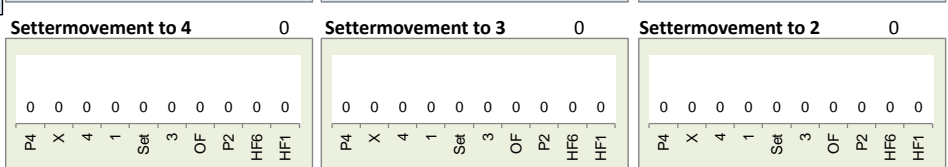
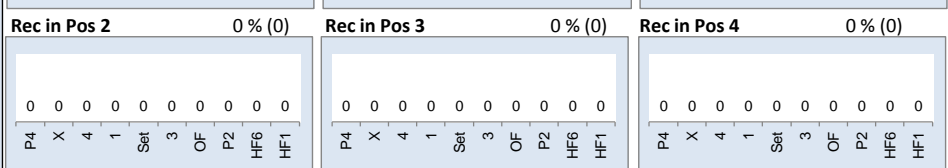
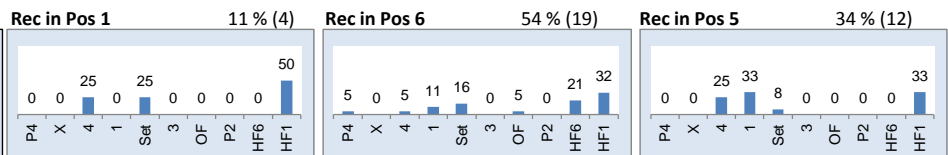
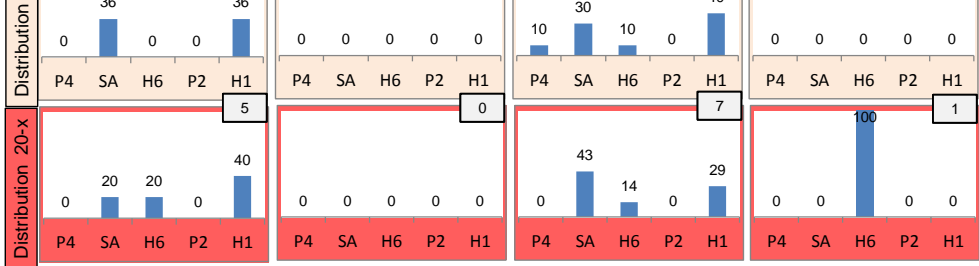
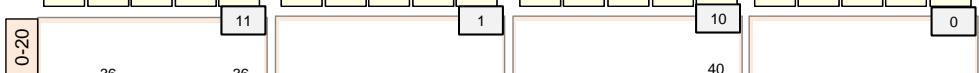
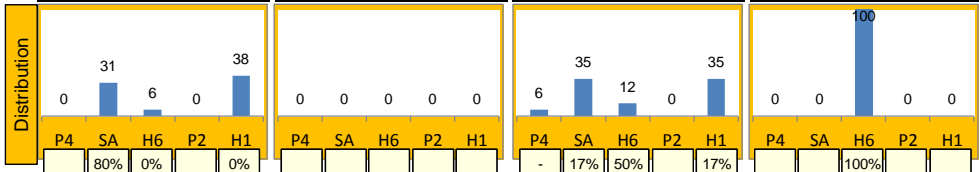
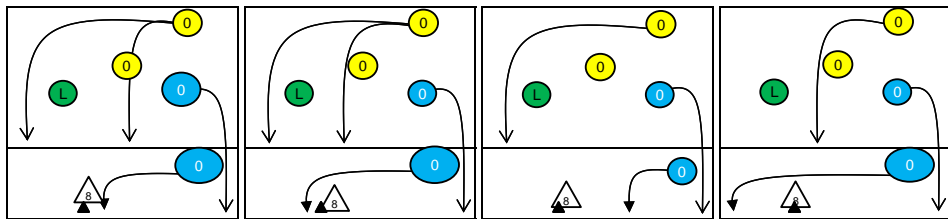
K2-Attacks - Transiti	Σ	Σ %	=	= %	#	# %	Eff
ITALY	44	100%	4	9%	15	34%	11%
10 PAMIO	16	36%	0	0%	7	44%	38%
14 EGONU	9	20%	2	22%	4	44%	22%
11 MANCINI	6	14%	0	0%	1	17%	0%
19 PIANI	6	14%	1	17%	2	33%	-33%
5 LUBIAN	5	11%	1	20%	1	20%	0%
2 MASIERO	1	2%	0	0%	0	0%	0%
3 BARTESAGHI	1	2%	0	0%	0	0%	-100%



Rotation 2

ITALY

Base K1 46 % (16) Base K2 3 % (1) Base K7 49 % (17) Base KD 3 % (1)



Distribution

K1 after all R 50 10% 36% K1 after R# 29 24% 45% K2 Transition 47 21% 38%

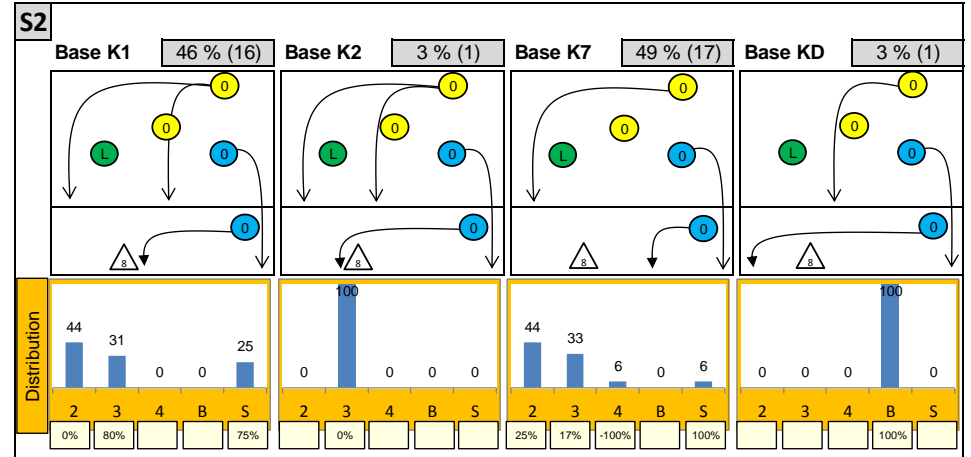
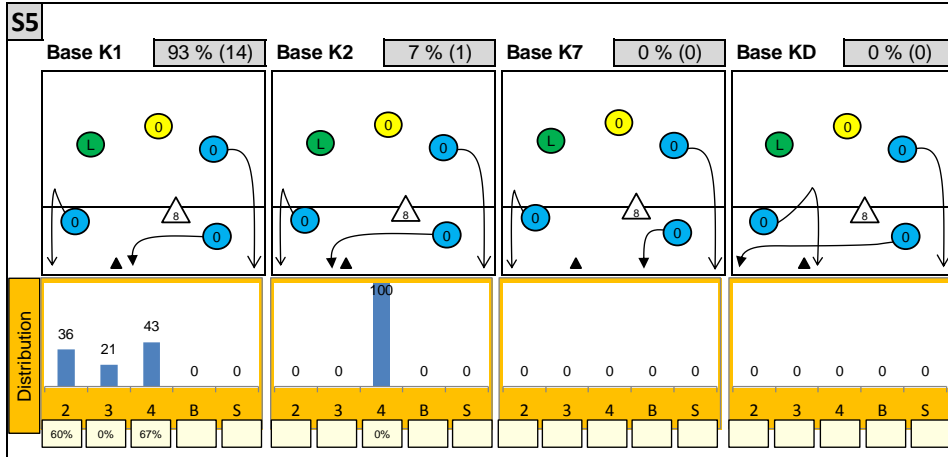
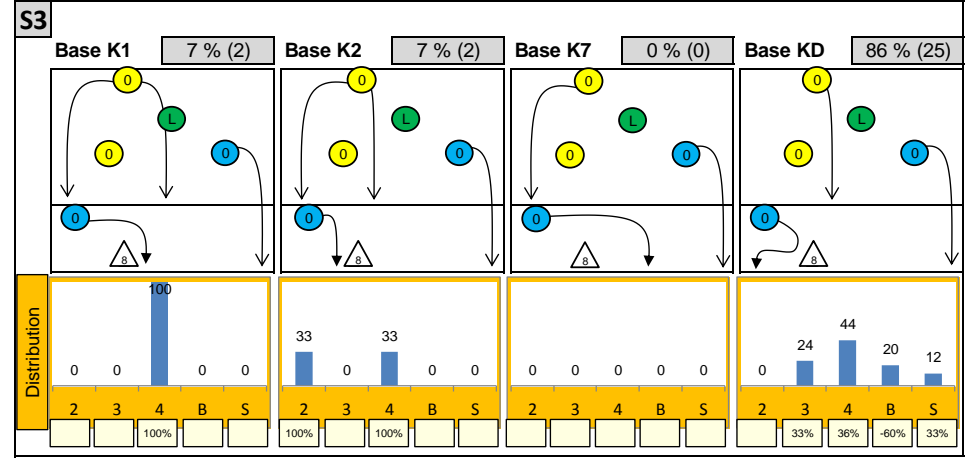
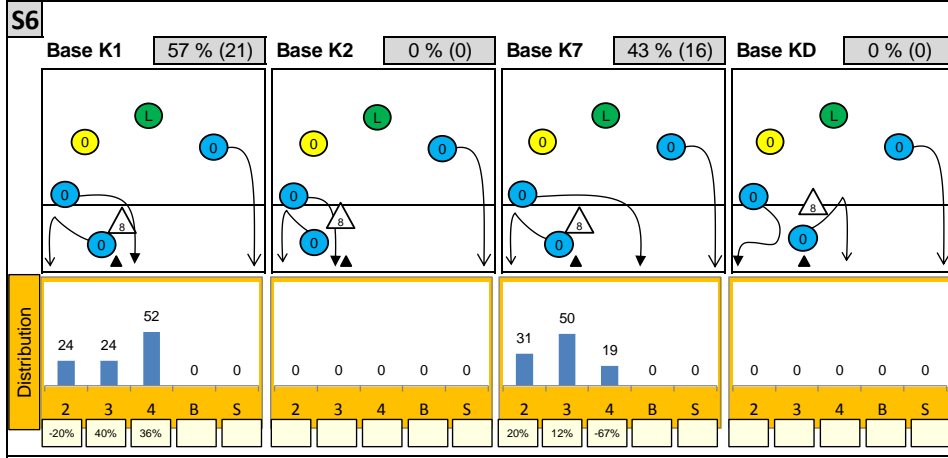
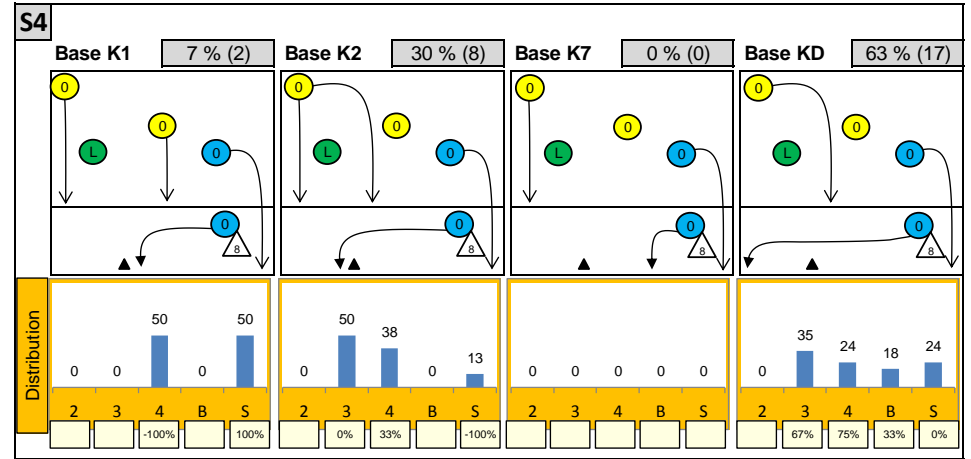
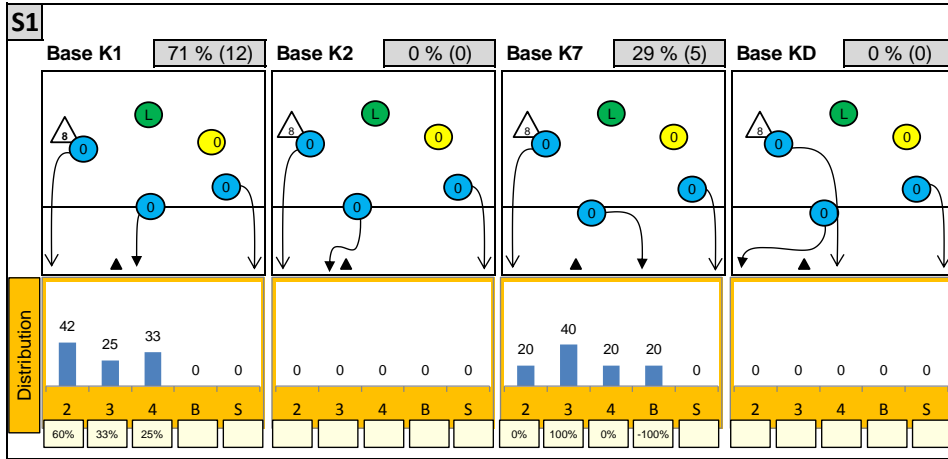
Base	P4	SA	H6	P2	H1
K1 after all R	19	38%	7	14%	0
K1 after R#	12	41%	4	14%	0
K2 Transition	11	23%	3	6%	0

Reception	Σ	Σ %	=	= %	+	+ %	#	# %	+ # %	Eff
ITALY	77	100%	10	13%	9	12%	27	35%	47%	34%
14 EGONU	27	35%	2	7%	3	11%	6	22%	33%	26%
10 PAMIO	18	23%	3	17%	1	6%	8	44%	50%	33%
6 ZANNONI	17	22%	2	12%	3	18%	5	29%	47%	35%
2 MASIERO	10	13%	1	10%	2	20%	5	50%	70%	60%
3 BARTESAGHI	4	5%	2	50%	0	0%	2	50%	50%	0%
9 TENTI	1	1%	0	0%	0	0%	1	100%	100%	100%

K1-Attacks after R#	Σ	Σ %	=	= %	#	# %	Eff
ITALY	29	100%	5	17%	13	45%	24%
12 MAZZARO	12	41%	1	8%	6	50%	42%
19 PIANI	10	34%	2	20%	3	30%	0%
14 EGONU	6	21%	1	17%	4	67%	50%
10 PAMIO	1	3%	1	100%	0	0%	-100%
1 CARRARO	0	0%	0	-	0	-	-
2 MASIERO	0	0%	0	-	0	-	-
3 BARTESAGHI	0	0%	0	-	0	-	-

K2-Attacks - Transitio	Σ	Σ %	=	= %	#	# %	Eff
ITALY	47	100%	4	9%	18	38%	21%
10 PAMIO	24	51%	3	13%	8	33%	8%
19 PIANI	9	19%	1	11%	4	44%	22%
12 MAZZARO	6	13%	0	0%	2	33%	33%
14 EGONU	6	13%	0	0%	4	67%	67%
3 BARTESAGHI	1	2%	0	0%	0	0%	0%
9 TENTI	1	2%	0	0%	0	0%	0%
1 CARRARO	0	0%	0	-	0	-	-

Attackdistribution depending on Settercalls - ITALY



2: Attack of Opposite

3: Attack of Middleblocker

4: Attack of Outside

B: Attack of Backrow

S: Attack of Setter

xx%: Efficiency of Attacks (-100% to +100%)

