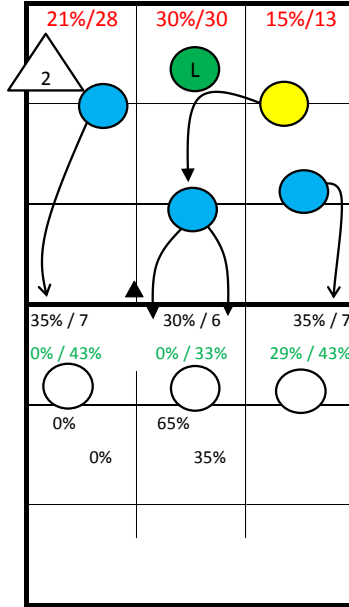


Roster

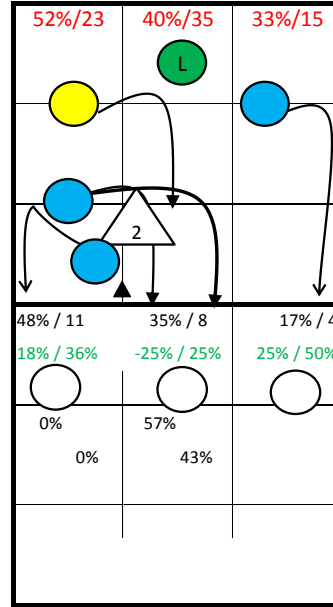
- 1 AGBORTABI
- 2 KÄSTNER
- 3 HENNING
- 4 KÖPPEN
- 5 KRAUSE
- 7 LEWELING
- 8 LENZ
- 9 KLEIN
- 10 SPÖLER
- 11 WEIDT
- 12 ORTHMANN
- 14 LOHMANN

GERMANY -

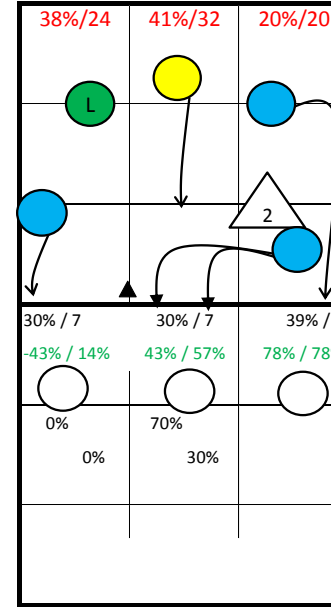
2: Jumpfloat at Position 1



S1



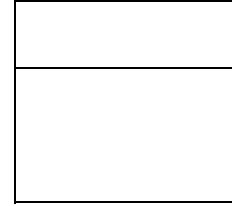
S6



S5



S1



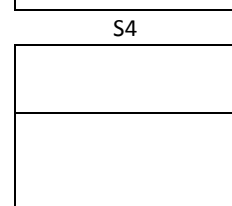
S6



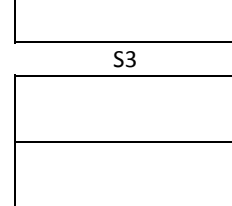
S5



S4

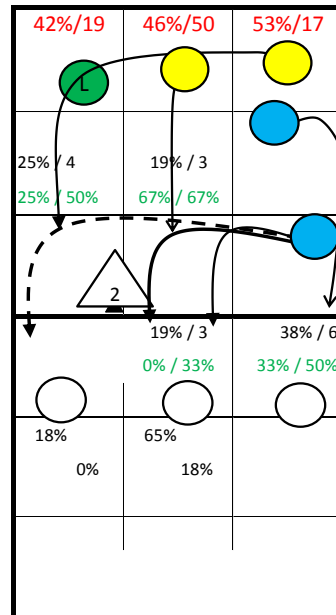
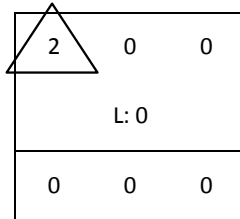


S3

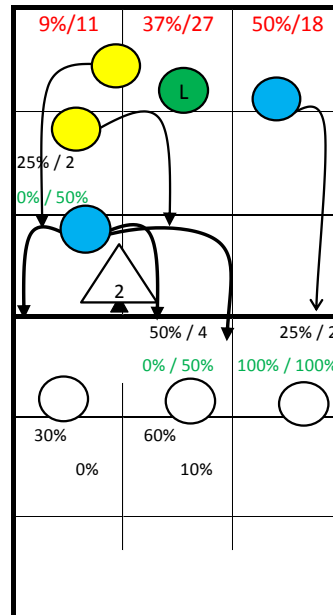


S2

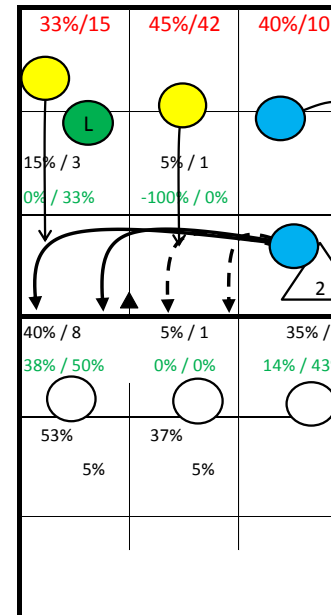
Starting Lineup:



S2

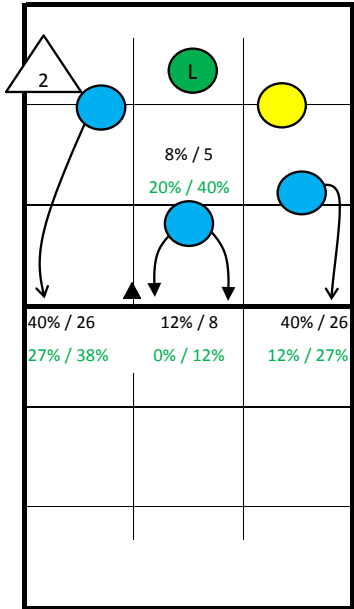


S3

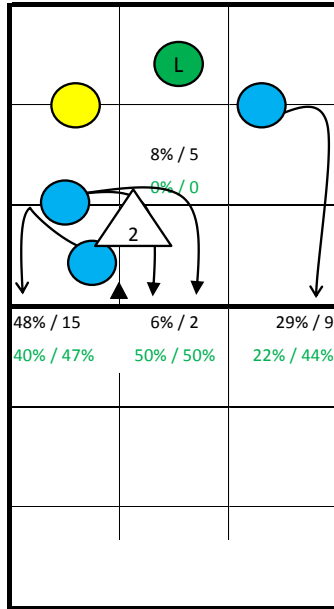


S4

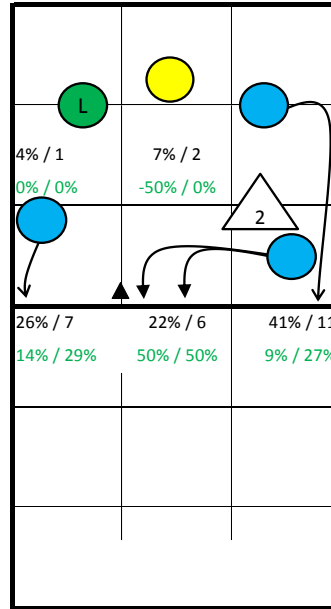
GERMANY -



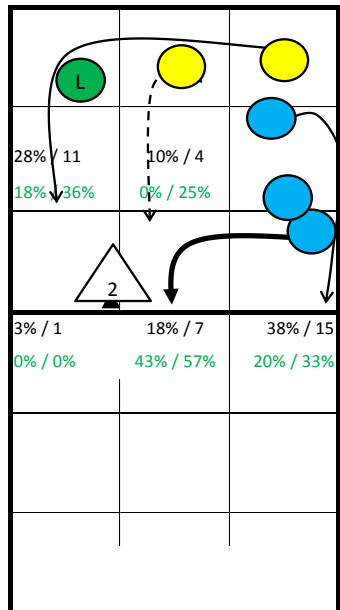
S1



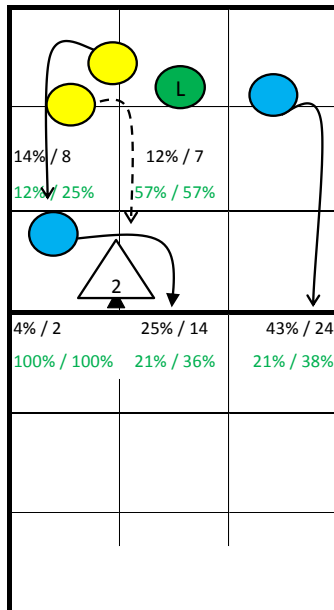
S6



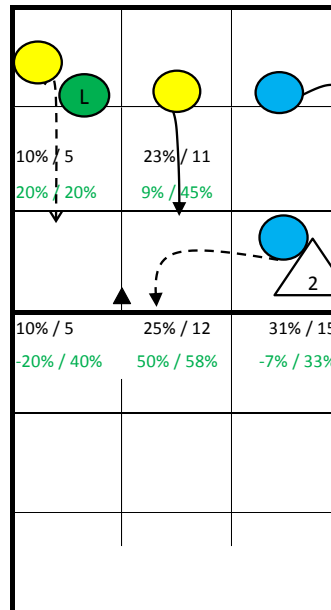
S5



S2



S3



S4

Notes:

GERMANY - all Statistics

pld	Points					Serve								Reception										Attack											
	Set	pts	P/s	easy=	all=	W-L	Σ	=	-	+	#	=%	#%	eff%	Σ	in %	=	/	-	+	#	=/%	+#%	#%	eff%	Σ	in %	=	/	!	+	#	=/%	#%	eff%
GERMANY	23	348	15,1	158	367	-19	493	56	170	207	60	11%	12%	43%	445		62	6	237	54	86	15%	31%	19%	16%	649		85	50	6	186	228	21%	35%	14%
1 AGBORTABI	21	59	2,8	25	62	-3	69	4	22	31	12	6%	17%	57%	72	16%	12	0	35	14	11	17%	34%	15%	18%	139	21%	20	13	2	47	40	24%	29%	5%
2 KÄSTNER	19	14	0,7	14	26	-12	77	2	29	41	5	3%	6%	57%	0											16	2%	0	3	0	7	6	19%	38%	19%
3 HENNING	19	0		1	15	-15	0							125	28%	12	0	64	21	28	10%	39%	22%	30%	0										
4 KÖPPEN	23	69	3,0	22	59	10	83	8	31	31	13	10%	16%	43%	121	27%	18	2	75	10	16	17%	21%	13%	5%	120	18%	13	9	1	30	47	18%	39%	21%
5 KRAUSE	21	34	1,6	14	38	-4	44	8	15	15	6	18%	14%	30%	2	0%	2	0	0	0	0	100%	0%	0%	-100%	28	4%	6	1	1	7	8	25%	29%	4%
7 LEWELING	18	30	1,7	7	30	0	47	3	20	19	5	6%	11%	45%	76	17%	11	1	41	3	20	16%	30%	26%	14%	84	13%	4	7	2	30	24	13%	29%	15%
8 LENZ	16	13	0,8	7	13	0	21	5	2	9	5	24%	24%	43%	15	3%	2	2	7	1	3	27%	27%	20%	0%	20	3%	2	1	0	6	8	15%	40%	25%
9 KLEIN	7	2	0,3	3	6	-4	13	3	3	5	2	23%	15%	31%	0										2	0%	0	1	0	0	0	50%	0%	-50%	
10 SPÖLER	15	22	1,5	13	23	-1	29	4	9	12	4	14%	14%	41%	0										32	5%	8	2	0	7	13	31%	41%	9%	
11 WEIDT	19	27	1,4	9	19	8	47	6	18	19	4	13%	9%	36%	0										26	4%	2	3	0	3	16	19%	62%	42%	
12 ORTHMANN	21	76	3,6	41	65	11	51	12	17	20	2	24%	4%	20%	2	0%	1	0	1	0	0	50%	0%	0%	-50%	181	28%	29	10	0	49	66	22%	36%	15%
14 LOHMANN	13	2	0,2	2	11	-9	12	1	4	5	2	8%	17%	50%	32	7%	4	1	14	5	8	16%	41%	25%	25%	1	0%	1	0	0	0	0	100%	0%	-100%

	Block						Defense						Freeball					Set		
	Σ	=	+	#	#%	eff%	Σ	=	/-!	+#	+#%	eff%	Σ	err	bad	god	eff%	Σ	=	eff%
GERMANY	217	78	65	60	28%	22%	68	20	12	36	53%	62%	20	2	5	13	50%	172	14	60%
1 AGBORTABI	22	11	2	7	32%	-9%	9	2	4	3	33%	67%	0					2	0	0%
2 KÄSTNER	23	8	10	3	13%	22%	3	1	0	2	67%	67%	0					135	12	74%
3 HENNING	0						13	2	2	9	69%	69%	1	1	0	0	-100%	5	0	0%
4 KÖPPEN	24	8	6	9	38%	29%	8	2	1	5	63%	75%	3	1	1	1	0%	2	0	0%
5 KRAUSE	64	20	21	20	31%	33%	2	1	0	1	50%	50%	6	0	1	5	83%	0		
7 LEWELING	7	3	3	1	14%	14%	8	2	2	4	50%	62%	1	0	0	1	100%	0		
8 LENZ	3	3	0	0	0%	-100%	1	0	1	0	0%	0%	0					0		
9 KLEIN	2	1	1	0	0%	0%	3	1	0	2	67%	67%	0					26	0	23%
10 SPÖLER	23	7	9	5	22%	30%	2	1	0	1	50%	50%	1	0	0	1	100%	1	1	-100%
11 WEIDT	24	6	8	7	29%	38%	4	1	1	2	50%	75%	0					1	1	-100%
12 ORTHMANN	25	11	5	8	32%	8%	6	2	1	3	50%	50%	6	0	3	3	33%	0		
14 LOHMANN	0						9	5	0	4	44%	44%	2	0	0	2	100%	0		

pld Set played Sets
 P/s Points per Set
 pts Points
 easy= easy errors (serve, net contact, ...)
 all= all errors
 W-L points - errors
 Σ sum of all events
 in % in percent of all team events

GERMANY - Attack-Statistic

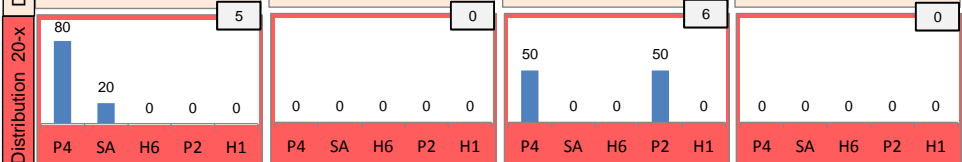
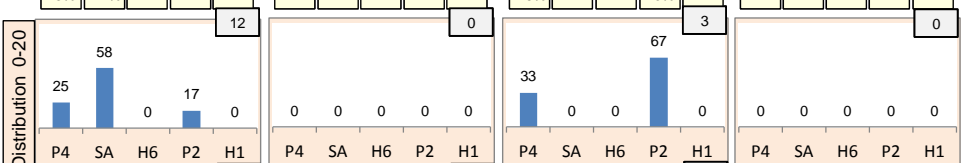
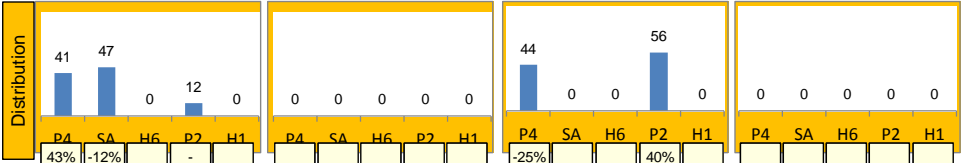
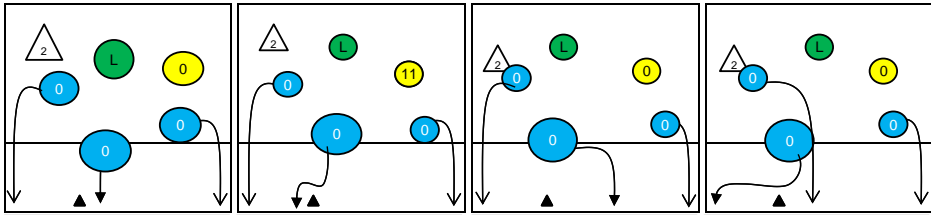
	K1 & K2 Attacks							K1 All Attacks							K2 Attacks							K1 aft R other Ply				K1 after own Rec						
	Σ	in %	=	/	#	=/%	##	eff	Σ	in %	=	/	#	=/%	##	eff	Σ	in %	=	/	#	=/%	##	eff	sum	#	##	eff	sum	#	##	eff
GERMANY	600		83	45	209	21%	35%	14%	328		49	26	116	23%	35%	12%	272		34	19	93	19%	34%	15%	302	109	36%		26	7	27%	
12 ORTHMANN	176	29%	28	10	65	22%	37%	15%	111	34%	24	4	37	25%	33%	8%	65	24%	4	6	28	15%	43%	28%	111	37	33%	8%	0			
1 AGBORTABI	133	22%	20	12	37	24%	28%	4%	56	17%	9	7	18	29%	32%	4%	77	28%	11	5	19	21%	25%	4%	53	17	32%	2%	3	1	33%	33%
4 KÖPPEN	118	20%	13	9	47	19%	40%	21%	73	22%	6	5	32	15%	44%	29%	45	17%	7	4	15	24%	33%	9%	59	26	44%	32%	14	6	43%	14%
7 LEWELING	80	13%	4	7	22	14%	28%	14%	33	10%	1	4	7	15%	21%	6%	47	17%	3	3	15	13%	32%	19%	25	7	28%	12%	8	0	0%	-12%
10 SPÖLER	27	4%	8	2	12	37%	44%	7%	15	5%	3	1	6	27%	40%	13%	12	4%	5	1	6	50%	50%	0%	15	6	40%	13%	0			
5 KRAUSE	23	4%	5	1	5	26%	22%	-4%	17	5%	4	1	5	29%	29%	0%	6	2%	1	0	0	17%	0%	-17%	17	5	29%	0%	0			
11 WEIDT	23	4%	2	3	14	22%	61%	39%	12	4%	1	3	7	33%	58%	25%	11	4%	1	0	7	9%	64%	55%	12	7	58%	25%	0			
8 LENZ	19	3%	2	1	7	16%	37%	21%	11	3%	1	1	4	18%	36%	18%	8	3%	1	0	3	13%	38%	25%	10	4	40%	20%	1	0	0%	0%
14 LOHMANN	1	0%	1	0	0	100%	0%	-100%	0								1	0%	1	0	0	100%	0%	-100%	0				0			
2 KÄSTNER	0								0								0								0				0			
3 HENNING	0								0								0								0				0			
9 KLEIN	0								0								0								0				0			

	K1 after R#+							K1 after R-!							Freeball-Attacks									
	Σ	in %	=	/	#	=/%	##	eff	Σ	in %	=	/	#	=/%	##	eff	Σ	in %	=	/	#	=/%	##	eff
GERMANY	130		19	13	58	25%	45%	20%	198		30	13	58	22%	29%	8%	2		0	0	2	0%	100%	100%
12 ORTHMANN	45	35%	10	2	17	27%	38%	11%	66	33%	14	2	20	24%	30%	6%	2	100%	0	0	2	0%	100%	100%
1 AGBORTABI	9	7%	2	1	6	33%	67%	33%	47	24%	7	6	12	28%	26%	-2%	0							
4 KÖPPEN	21	16%	0	2	13	10%	62%	52%	52	26%	6	3	19	17%	37%	19%	0							
7 LEWELING	10	8%	0	3	3	30%	30%	0%	23	12%	1	1	4	9%	17%	9%	0							
10 SPÖLER	13	10%	2	1	5	23%	38%	15%	2	1%	1	0	1	50%	50%	0%	0							
5 KRAUSE	16	12%	4	1	5	31%	31%	0%	1	1%	0	0	0	0%	0%	0%	0							
11 WEIDT	12	9%	1	3	7	33%	58%	25%	0								0							
8 LENZ	4	3%	0	0	2	0%	50%	50%	7	4%	1	1	2	29%	29%	0%	0							
14 LOHMANN	0								0								0							
2 KÄSTNER	0								0								0							
3 HENNING	0								0								0							
9 KLEIN	0								0								0							

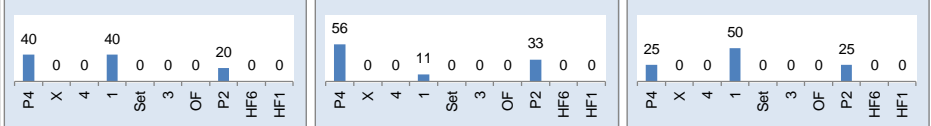
Rotation 1

GERMANY

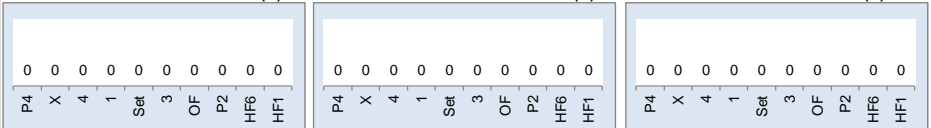
Base K1 65% (17) Base K2 0% (0) Base K7 35% (9) Base KD 0% (0)



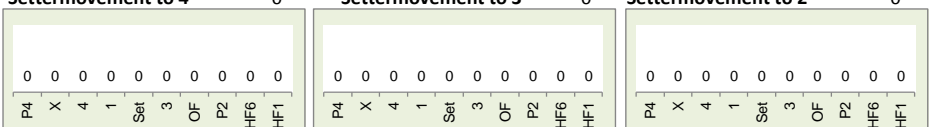
Rec in Pos 1 43% (10) Rec in Pos 6 39% (9) Rec in Pos 5 17% (4)



Rec in Pos 2 0% (0) Rec in Pos 3 0% (0) Rec in Pos 4 0% (0)



Settermovement to 4 0 Settermovement to 3 0 Settermovement to 2 0



Distribution

K1 after all R 77 -1% 29% K1 after R#+ 27 4% 33% K2 Transition 69 12% 30%

Player	Count	%	Player	Count	%	Player	Count	%	
2	3%	1	1%	0	-	0	-	0	-
-50%	0%	0%	0%	-	-	-	-	-	-
17	22%	9	12%	48	62%	7	26%	8	30%
6%	35%	-11%	22%	0%	29%	0%	43%	-12%	25%

Reception	Σ	Σ %	=	= %	+	+ %	#	# %	+ # %	Eff
GERMANY	100	100%	16	16%	13	13%	16	16%	29%	13%
3 HENNING	33	33%	3	9%	6	18%	7	21%	39%	30%
7 LEWELING	21	21%	5	24%	2	10%	4	19%	29%	5%
4 KÖPPEN	18	18%	3	17%	2	11%	0	0%	11%	-6%
14 LOHMANN	12	12%	2	17%	2	17%	2	17%	33%	17%
1 AGBORTABI	11	11%	1	9%	1	9%	3	27%	36%	27%
8 LENZ	3	3%	1	33%	0	0%	0	0%	0%	-33%

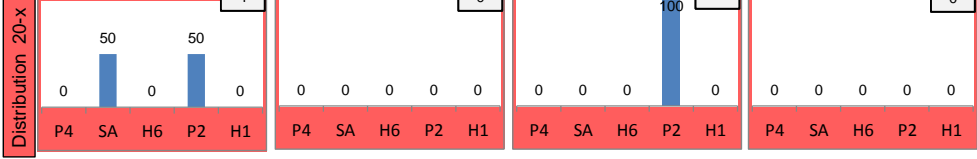
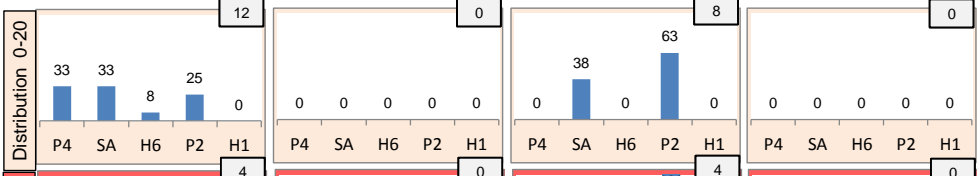
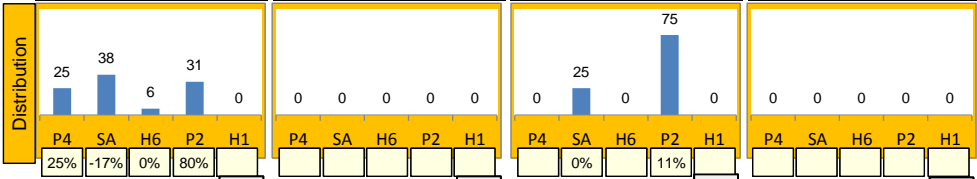
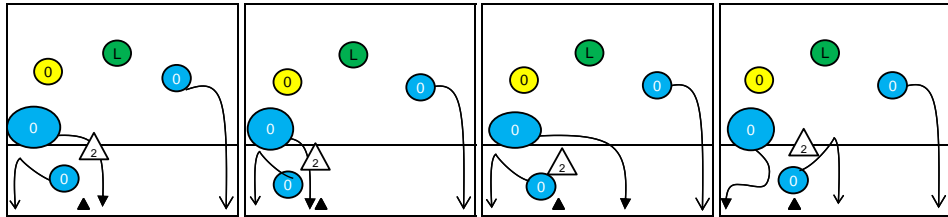
K1-Attacks after R#+	Σ	Σ %	=	= %	#	# %	Eff
GERMANY	27	100%	4	15%	9	33%	4%
12 ORTHMANN	10	37%	1	10%	4	40%	20%
5 KRAUSE	6	22%	2	33%	2	33%	0%
1 AGBORTABI	5	19%	1	20%	3	60%	20%
7 LEWELING	2	7%	0	0%	0	0%	-50%
8 LENZ	2	7%	0	0%	0	0%	0%
11 WEIDT	2	7%	0	0%	0	0%	-50%
2 KÄSTNER	0	0%	0	-	0	-	-

K2-Attacks - Transitor	Σ	Σ %	=	= %	#	# %	Eff
GERMANY	69	100%	7	10%	21	30%	12%
1 AGBORTABI	21	30%	4	19%	6	29%	5%
12 ORTHMANN	20	29%	1	5%	7	35%	10%
7 LEWELING	18	26%	0	0%	5	28%	22%
5 KRAUSE	4	6%	1	25%	0	0%	-25%
4 KÖPPEN	3	4%	0	0%	2	67%	67%
8 LENZ	1	1%	0	0%	0	0%	0%
11 WEIDT	1	1%	0	0%	1	100%	100%

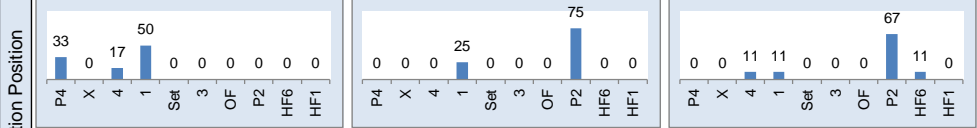
Rotation 6

GERMANY

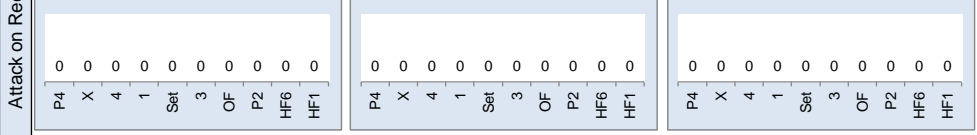
Base K1 57 % (16) Base K2 0 % (0) Base K7 43 % (12) Base KD 0 % (0)



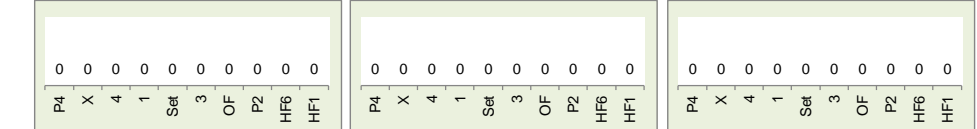
Rec in Pos 1 26 % (6) Rec in Pos 6 35 % (8) Rec in Pos 5 39 % (9)



Rec in Pos 2 0 % (0) Rec in Pos 3 0 % (0) Rec in Pos 4 0 % (0)



Settermovement to 4 0 Settermovement to 3 0 Settermovement to 2 0



Distribution

K1 after all R 57 23% 42% K1 after R#+ 29 17% 41% K2 Transition 42 26% 40%

Player	Base K1	Base K2	Base K7	Base KD	K1 after all R	K1 after R#+	K2 Transition
P4	25	0	0	0	2	0	0
SA	38	0	25	0	2	1	5
H6	6	0	0	0	0	0	0
P2	31	0	75	0	9	9	3
H1	0	0	0	0	0	4	0

Reception	Σ	Σ %	=/	= / %	+	+ %	#	# %	+ # %	Eff
GERMANY	80	100%	15	19%	10	13%	20	25%	38%	19%
4 KÖPPEN	21	26%	4	19%	4	19%	3	14%	33%	14%
3 HENNING	20	25%	3	15%	1	5%	6	30%	35%	20%
1 AGBORTABI	15	19%	3	20%	4	27%	2	13%	40%	20%
7 LEWELING	11	14%	2	18%	0	0%	6	55%	55%	36%
14 LOHMANN	10	13%	2	20%	1	10%	2	20%	30%	10%
8 LENZ	2	3%	0	0%	0	0%	1	50%	50%	50%

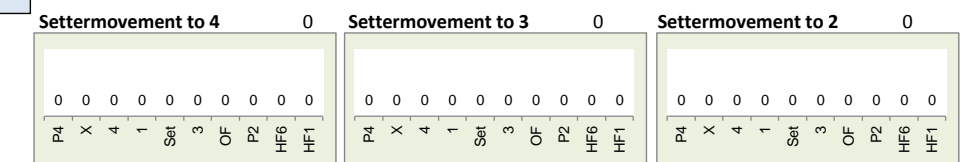
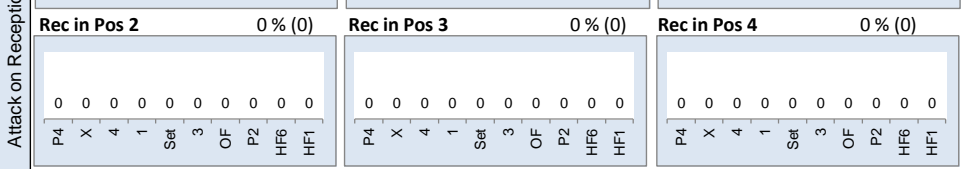
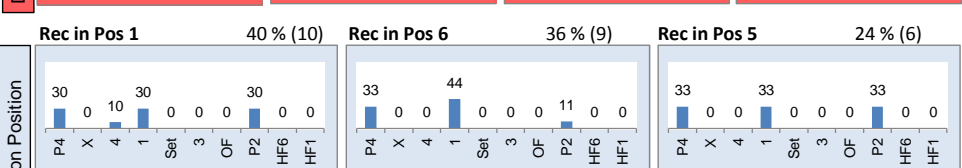
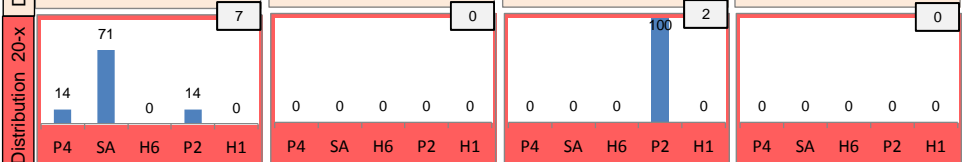
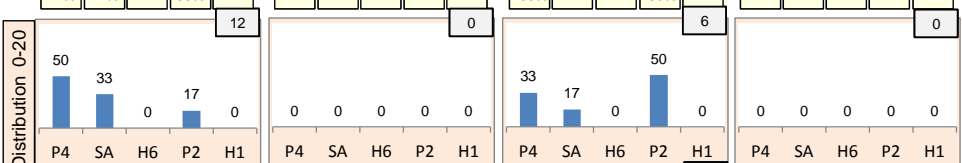
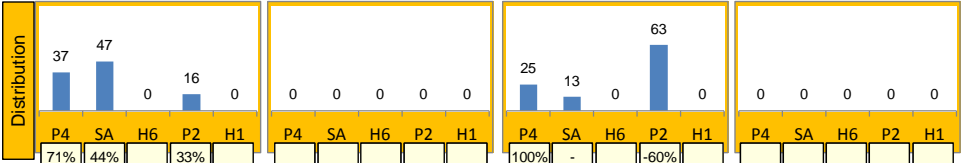
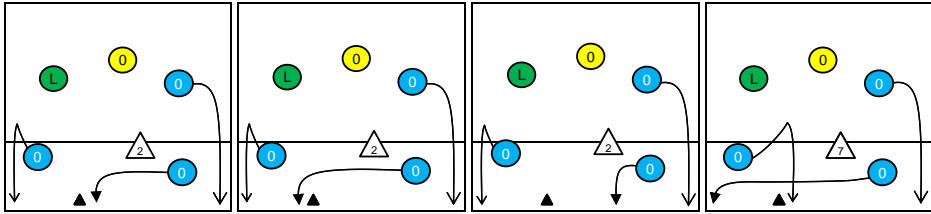
K1-Attacks after R#+	Σ	Σ %	=	= %	#	# %	Eff
GERMANY	29	100%	4	14%	12	41%	17%
12 ORTHMANN	13	45%	2	15%	5	38%	23%
5 KRAUSE	7	24%	2	29%	2	29%	-14%
4 KÖPPEN	3	10%	0	0%	2	67%	67%
7 LEWELING	2	7%	0	0%	0	0%	-50%
11 WEIDT	2	7%	0	0%	1	50%	0%
1 AGBORTABI	1	3%	0	0%	1	100%	100%
8 LENZ	1	3%	0	0%	1	100%	100%

K2-Attacks - Transition	Σ	Σ %	=	= %	#	# %	Eff
GERMANY	42	100%	1	2%	17	40%	26%
12 ORTHMANN	17	40%	0	0%	9	53%	47%
4 KÖPPEN	12	29%	1	8%	3	25%	0%
1 AGBORTABI	8	19%	0	0%	3	38%	12%
5 KRAUSE	2	5%	0	0%	0	0%	0%
7 LEWELING	1	2%	0	0%	0	0%	0%
8 LENZ	1	2%	0	0%	1	100%	100%
11 WEIDT	1	2%	0	0%	1	100%	100%

Rotation 5

GERMANY

Base K1 70 % (19) Base K2 0 % (0) Base K7 30 % (8) Base KD 0 % (0)



Distribution

K1 after all R 55 15% 38% K1 after R#+ 28 29% 54% K2 Transition 27 7% 26%

Player	1	2	3	4	5	6	7	8	9	10	11	12
K1 after all R	0%	0%	-50%	0%	-	-	-	-	-	-	-	-
K1 after R#+	-	-	-	-	-	-	-	-	-	-	-	-
K2 Transition	0%	0%	-50%	0%	-	-	-	-	-	-	-	-

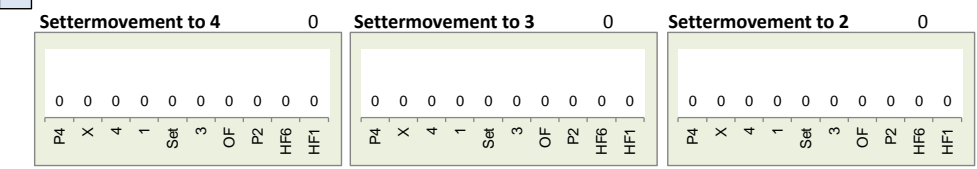
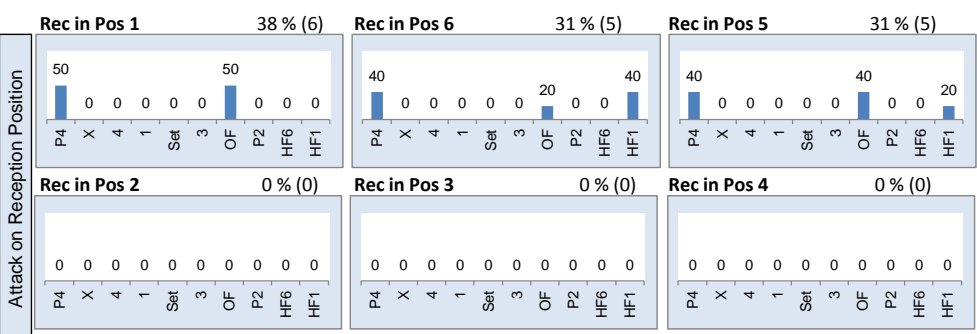
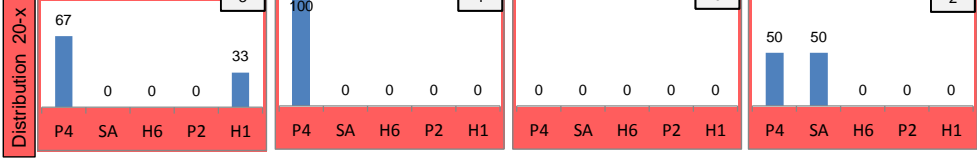
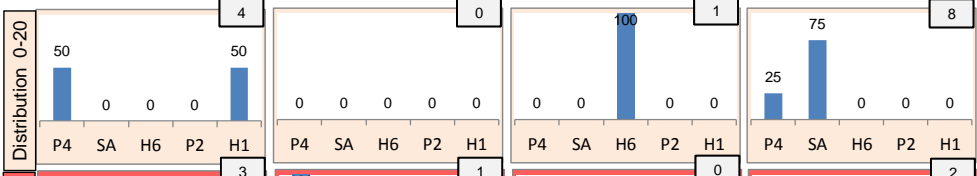
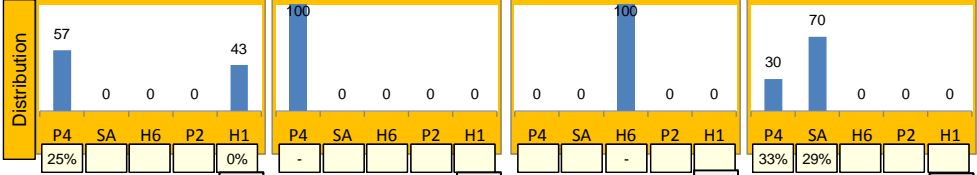
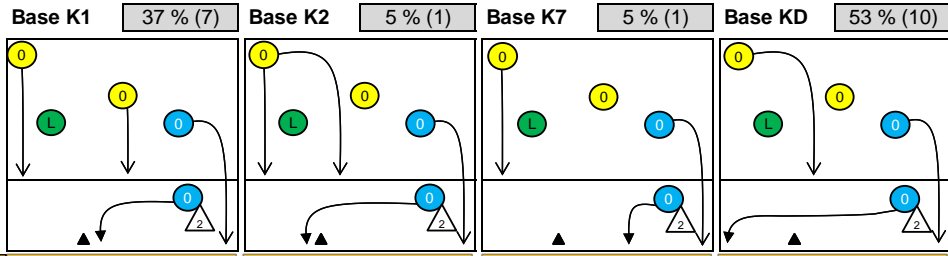
Reception	Σ	Σ %	=	= %	+	+ %	#	# %	+ # %	Eff
GERMANY	77	100%	12	16%	22	16%	17	22%	38%	22%
3 HENNING	26	34%	2	8%	6	23%	6	23%	46%	38%
7 LEWELING	19	25%	4	21%	0	0%	4	21%	21%	0%
1 AGBORTABI	15	19%	3	20%	4	27%	3	20%	47%	27%
4 KÖPPEN	14	18%	2	14%	2	14%	3	21%	36%	21%
8 LENZ	2	3%	1	50%	0	0%	0	0%	0%	-50%
14 LOHMANN	1	1%	0	0%	0	0%	1	100%	100%	100%

K1-Attacks after R#+	Σ	Σ %	=	= %	#	# %	Eff
GERMANY	28	100%	6	21%	15	54%	29%
4 KÖPPEN	9	32%	0	0%	7	78%	78%
12 ORTHMANN	8	29%	4	50%	2	25%	-25%
10 SPÖLER	5	18%	1	20%	1	20%	-20%
11 WEIDT	5	18%	1	20%	4	80%	60%
5 KRAUSE	1	4%	0	0%	1	100%	100%
1 AGBORTABI	0	0%	0	-	0	-	-
2 KÄSTNER	0	0%	0	-	0	-	-

K2-Attacks - Transitor	Σ	Σ %	=	= %	#	# %	Eff
GERMANY	27	100%	3	11%	7	26%	7%
4 KÖPPEN	9	33%	1	11%	3	33%	11%
12 ORTHMANN	8	30%	0	0%	3	38%	25%
1 AGBORTABI	5	19%	1	20%	0	0%	-20%
7 LEWELING	2	7%	0	0%	0	0%	0%
8 LENZ	1	4%	1	100%	0	0%	-100%
10 SPÖLER	1	4%	0	0%	1	100%	100%
11 WEIDT	1	4%	0	0%	0	0%	0%

Rotation 4

GERMANY



Distribution

K1 after all R	52	19%	40%	K1 after R#+	21	14%	43%	K2 Transition	51	4%	33%
7	13%	5	10%	0	-	3	14%	1	5%	0	-
0%	14%	-60%	0%	-	-	0%	33%	-100%	0%	-	-
9	17%	0	-	31	60%	8	38%	0	-	9	43%
44%	56%	-	-	29%	48%	38%	50%	-	-	11%	44%
7	14%	12	24%	0	-	7	14%	12	24%	0	-
14%	14%	8%	42%	-	-	14%	14%	8%	42%	-	-
5	10%	5	10%	22	43%	5	10%	5	10%	22	43%
-20%	40%	60%	80%	-9%	23%	-20%	40%	60%	80%	-9%	23%

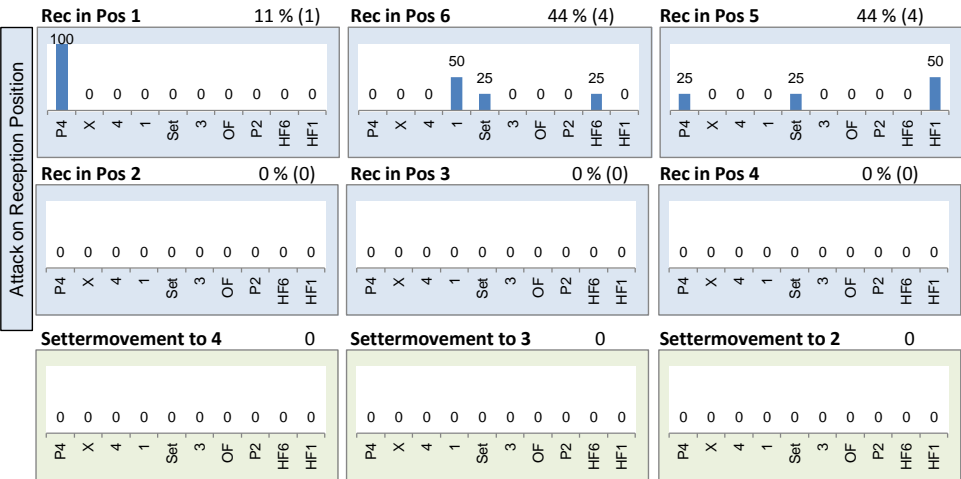
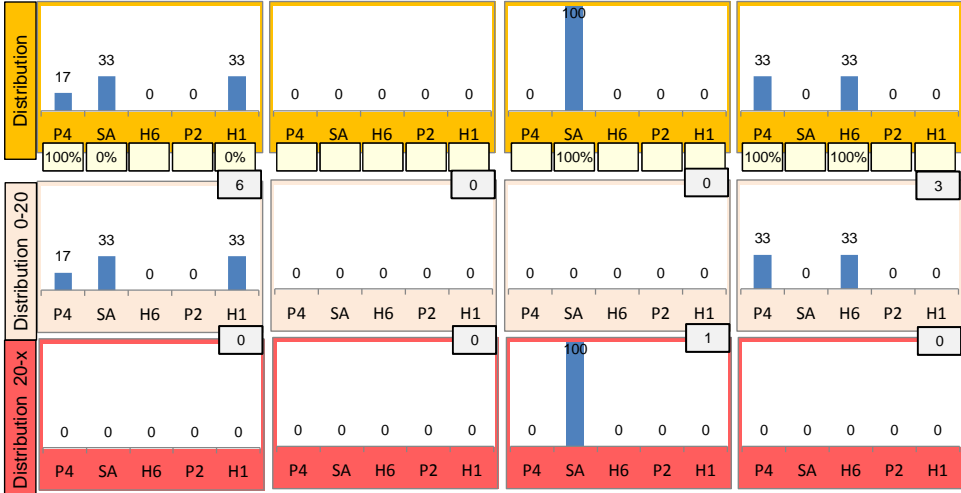
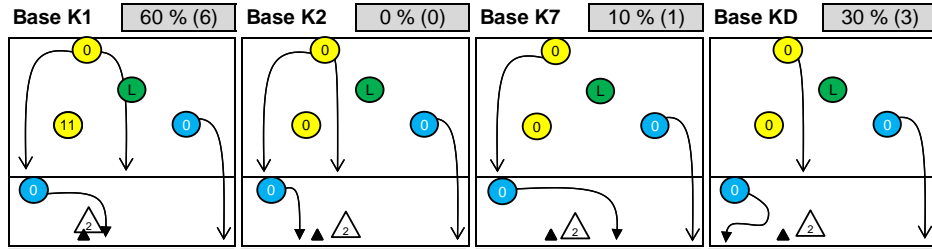
Reception	Σ	Σ %	=/	=/ %	+	+ %	#	# %	+ # %	Eff
GERMANY	65	100%	8	12%	8	12%	14	22%	34%	22%
1 AGBORTABI	19	29%	4	21%	2	11%	2	11%	21%	0%
3 HENNING	16	25%	1	6%	3	19%	5	31%	50%	44%
4 KÖPPEN	16	25%	2	13%	2	13%	2	13%	25%	13%
7 LEWELING	9	14%	0	0%	0	0%	4	44%	44%	44%
8 LENZ	3	5%	0	0%	0	0%	1	33%	33%	33%
14 LOHMANN	2	3%	1	50%	1	50%	0	0%	50%	0%

K1-Attacks after R#+	Σ	Σ %	=	= %	#	# %	Eff
GERMANY	21	100%	2	10%	9	43%	14%
4 KÖPPEN	8	38%	0	0%	4	50%	25%
10 SPÖLER	8	38%	1	13%	4	50%	38%
12 ORTHMANN	4	19%	1	25%	1	25%	-25%
7 LEWELING	1	5%	0	0%	0	0%	-100%
1 AGBORTABI	0	0%	0	-	0	-	-
2 KÄSTNER	0	0%	0	-	0	-	-
3 HENNING	0	0%	0	-	0	-	-

K2-Attacks - Transitio	Σ	Σ %	=	= %	#	# %	Eff
GERMANY	51	100%	14	27%	17	33%	4%
4 KÖPPEN	15	29%	5	33%	4	27%	-13%
1 AGBORTABI	12	24%	3	25%	4	33%	8%
12 ORTHMANN	6	12%	0	0%	2	33%	33%
7 LEWELING	5	10%	2	40%	0	0%	-40%
10 SPÖLER	5	10%	3	60%	2	40%	-20%
11 WEIDT	5	10%	1	20%	4	80%	60%
8 LENZ	3	6%	0	0%	1	33%	33%

Rotation 3

GERMANY



Distribution

K1 after all R	39	8%	31%	K1 after R#+	8	50%	75%	K2 Transition	48	23%	40%
11	28%	4	10%	0	-	2	25%	1	13%	0	-
-18%	18%	0%	25%	-	-	0%	50%	100%	100%	-	-
0	-	3	8%	21	54%	0	-	3	38%	2	25%
-	-	33%	67%	19%	33%	-	-	33%	67%	100%	100%

Reception	Σ	Σ %	=	= %	+	+ %	#	# %	+ # %	Eff
GERMANY	58	100%	10	17%	3	5%	7	12%	17%	0%
4 KÖPPEN	24	41%	6	25%	0	0%	1	4%	4%	-21%
3 HENNING	17	29%	2	12%	1	6%	3	18%	24%	12%
1 AGBORTABI	7	12%	0	0%	2	29%	1	14%	43%	43%
14 LOHMANN	4	7%	0	0%	0	0%	2	50%	50%	50%
7 LEWELING	3	5%	0	0%	0	0%	0	0%	0%	0%
8 LENZ	3	5%	2	67%	0	0%	0	0%	0%	-67%

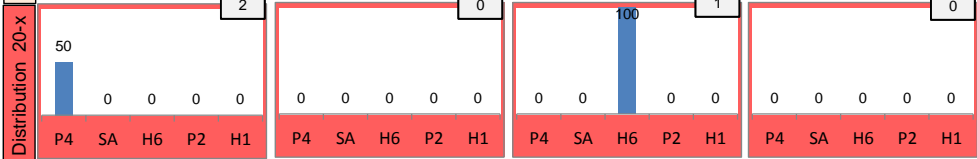
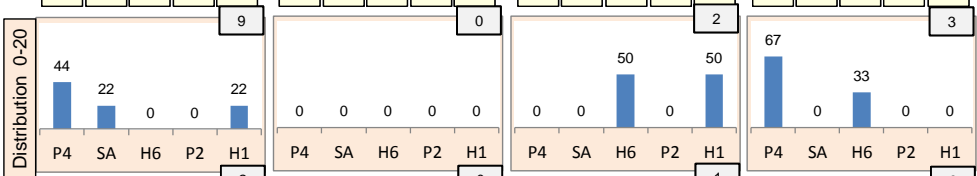
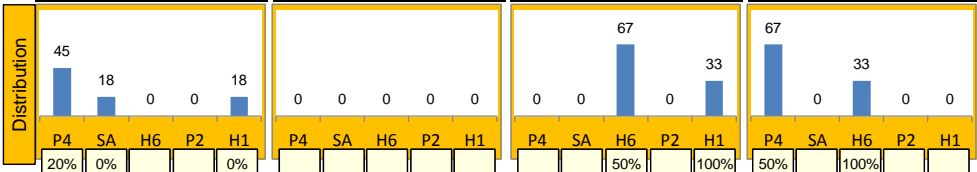
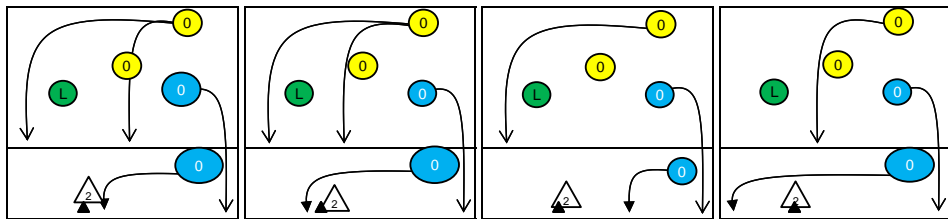
K1-Attacks after R#+	Σ	Σ %	=	= %	#	# %	Eff
GERMANY	8	100%	1	13%	6	75%	50%
11 WEIDT	3	38%	0	0%	2	67%	33%
12 ORTHMANN	3	38%	1	33%	2	67%	33%
1 AGBORTABI	1	13%	0	0%	1	100%	100%
7 LEWELING	1	13%	0	0%	1	100%	100%
2 KÄSTNER	0	0%	0	-	0	-	-
3 HENNING	0	0%	0	-	0	-	-
4 KÖPPEN	0	0%	0	-	0	-	-

K2-Attacks - Transition	Σ	Σ %	=	= %	#	# %	Eff
GERMANY	48	100%	4	8%	19	40%	23%
1 AGBORTABI	19	40%	2	11%	4	21%	5%
7 LEWELING	11	23%	0	0%	7	64%	45%
10 SPÖLER	5	10%	1	20%	3	60%	20%
12 ORTHMANN	5	10%	1	20%	2	40%	20%
4 KÖPPEN	4	8%	0	0%	2	50%	50%
11 WEIDT	3	6%	0	0%	1	33%	33%
8 LENZ	1	2%	0	0%	0	0%	0%

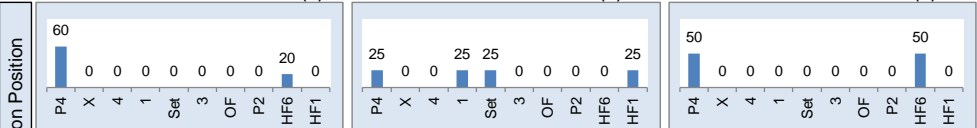
Rotation 2

GERMANY

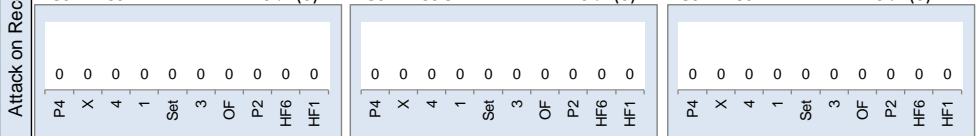
Base K1 65% (11) Base K2 0% (0) Base K7 18% (3) Base KD 18% (3)



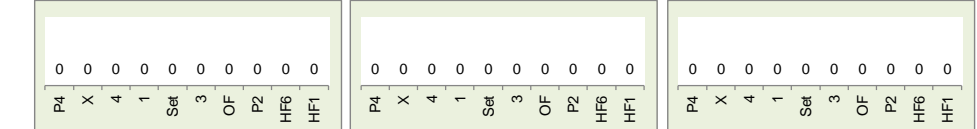
Rec in Pos 1 33% (5) Rec in Pos 6 53% (8) Rec in Pos 5 13% (2)



Rec in Pos 2 0% (0) Rec in Pos 3 0% (0) Rec in Pos 4 0% (0)



Settermovement to 4 0 Settermovement to 3 0 Settermovement to 2 0



Distribution

K1 after all R 48 17% 33% K1 after R#+ 17 29% 41% K2 Transition 35 17% 34%

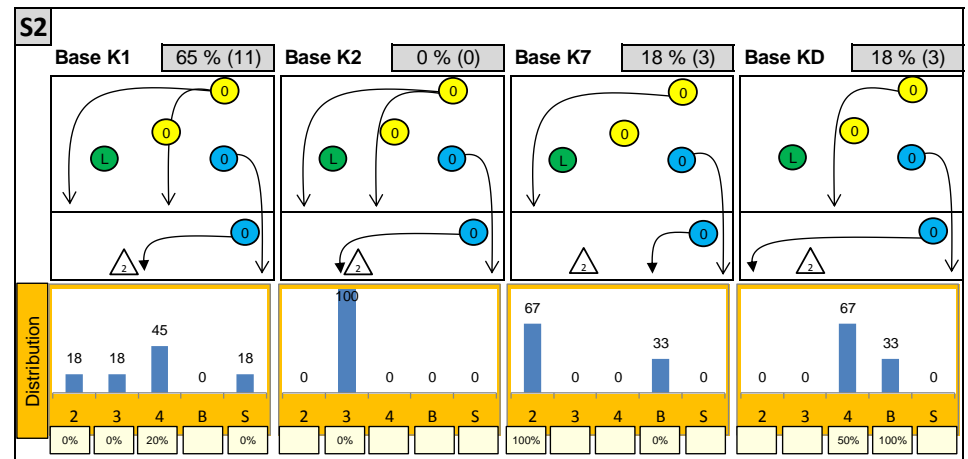
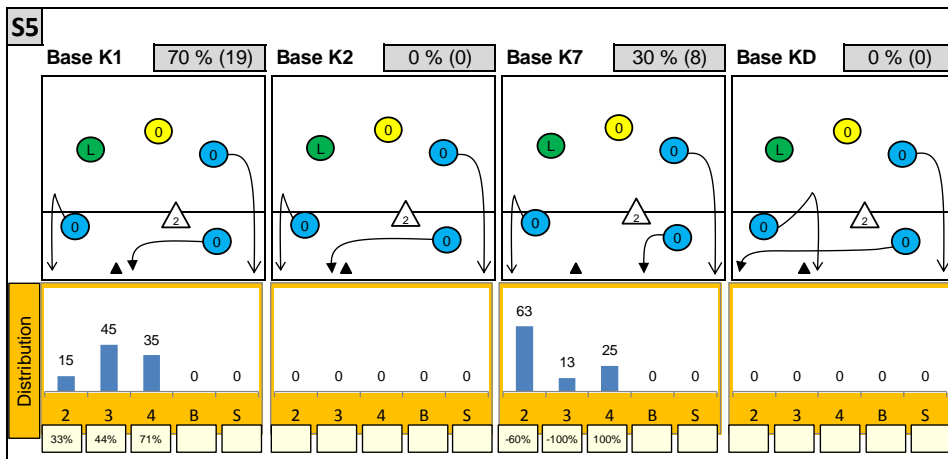
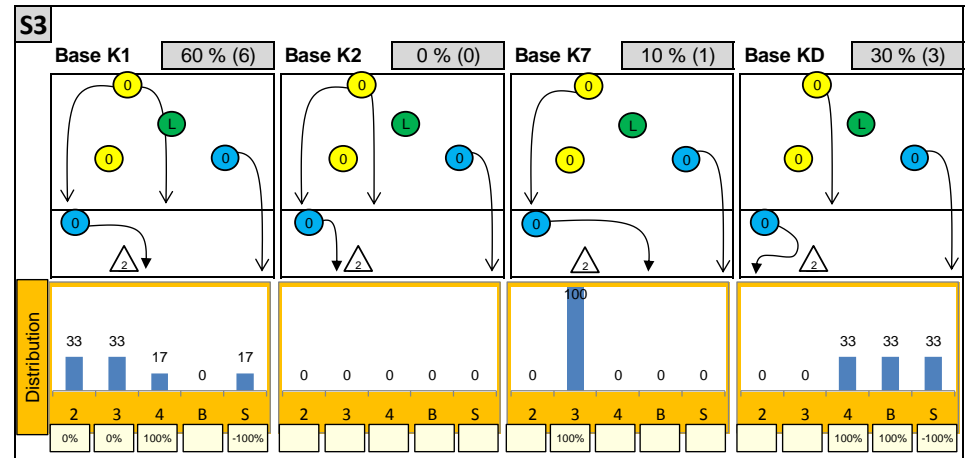
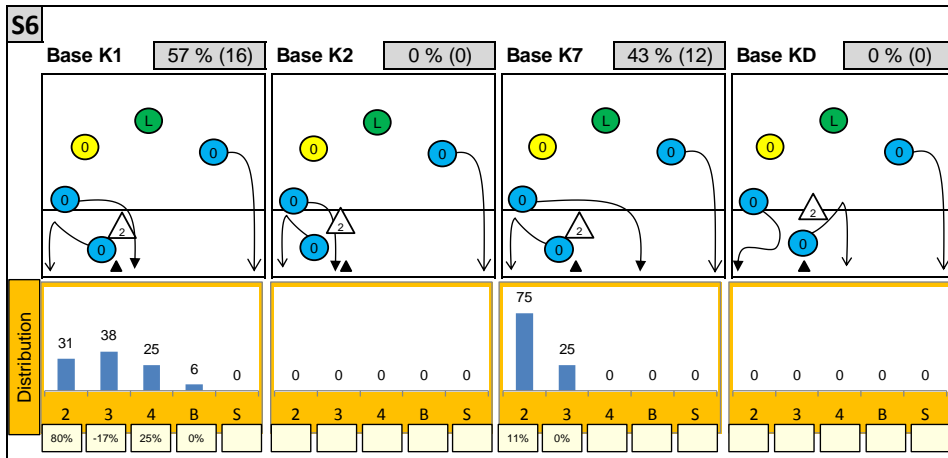
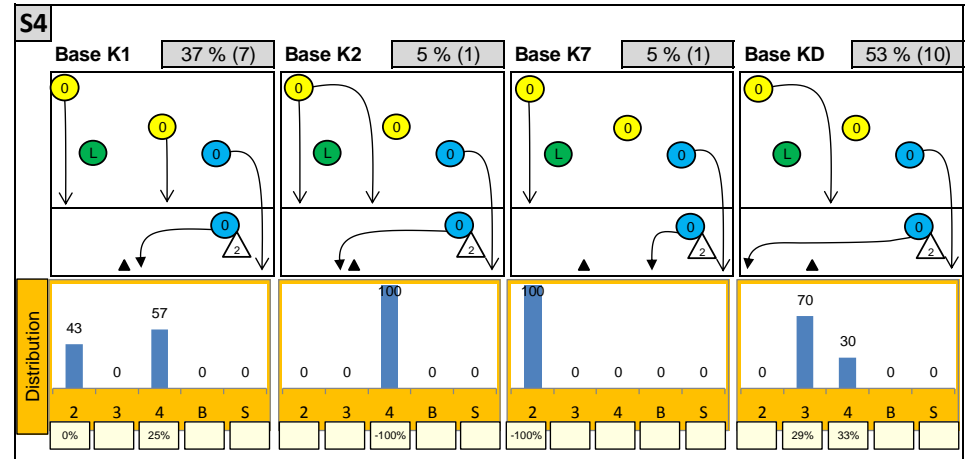
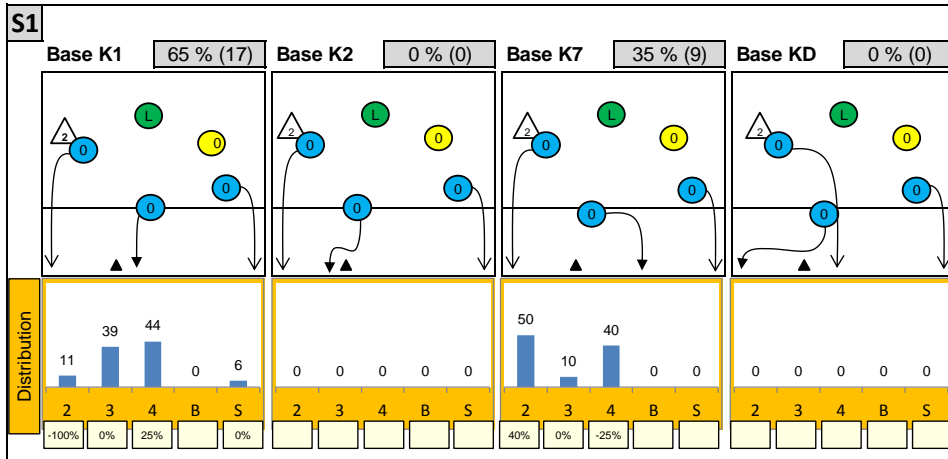
12	25%	9	19%	0	-	4	24%	4	24%	0	-	12	34%	4	11%	1	3%
17%	50%	22%	33%	-	-	25%	50%	50%	50%	-	-	25%	42%	0%	25%	-100%	0%
0	-	2	4%	25	52%	0	-	2	12%	7	41%	1	3%	0	-	17	49%
-	-	0%	0%	16%	28%	-	-	0%	0%	29%	43%	0%	0%	-	-	24%	35%

Reception	Σ	Σ %	=/	=/ %	+	+ %	#	# %	+ # %	Eff
GERMANY	65	100%	7	11%	8	12%	12	18%	31%	20%
4 KÖPPEN	28	43%	3	11%	0	0%	7	25%	25%	14%
3 HENNING	13	20%	1	8%	4	31%	1	8%	38%	31%
7 LEWELING	13	20%	1	8%	1	8%	2	15%	23%	15%
1 AGBORTABI	5	8%	1	20%	1	20%	0	0%	20%	0%
14 LOHMANN	3	5%	0	0%	1	33%	1	33%	67%	67%
8 LENZ	2	3%	0	0%	1	50%	1	50%	100%	100%

K1-Attacks after R#+	Σ	Σ %	=	= %	#	# %	Eff
GERMANY	17	100%	2	12%	7	41%	29%
12 ORTHMANN	7	41%	1	14%	3	43%	29%
7 LEWELING	4	24%	0	0%	2	50%	50%
1 AGBORTABI	2	12%	1	50%	1	50%	0%
5 KRAUSE	2	12%	0	0%	0	0%	0%
4 KÖPPEN	1	6%	0	0%	0	0%	0%
8 LENZ	1	6%	0	0%	1	100%	100%
2 KÄSTNER	0	0%	0	-	0	-	-

K2-Attacks - Transiti	Σ	Σ %	=	= %	#	# %	Eff
GERMANY	35	100%	5	14%	12	34%	17%
1 AGBORTABI	12	34%	1	8%	2	17%	0%
7 LEWELING	10	29%	1	10%	3	30%	20%
12 ORTHMANN	9	26%	2	22%	5	56%	33%
4 KÖPPEN	2	6%	0	0%	1	50%	50%
8 LENZ	1	3%	0	0%	1	100%	100%
10 SPÖLER	1	3%	1	100%	0	0%	-100%
2 KÄSTNER	0	0%	0	-	0	-	-

Attackdistribution depending on Settercalls - GERMANY



2: Attack of Opposite

3: Attack of Middleblocker

4: Attack of Outside

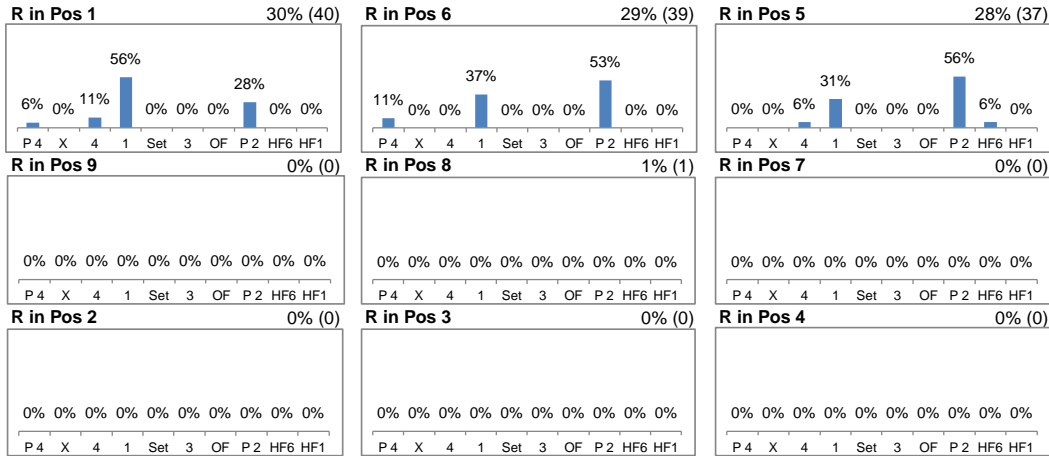
B: Attack of Backrow

S: Attack of Setter

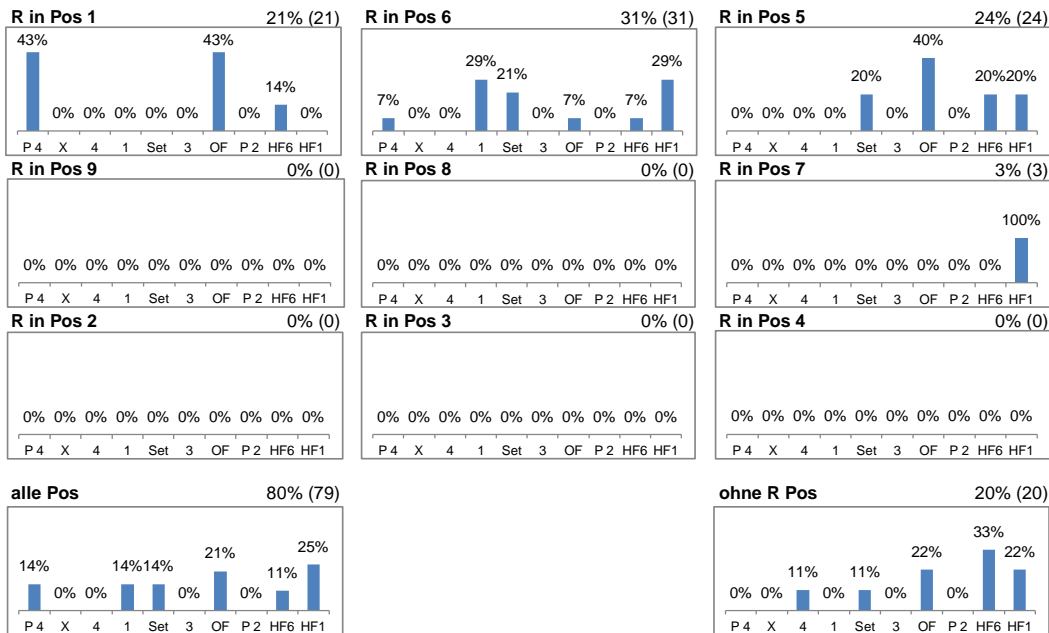
xx%: Efficiency of Attacks (-100% to +100%)

Attacks depending on Reception Position - GERMANY

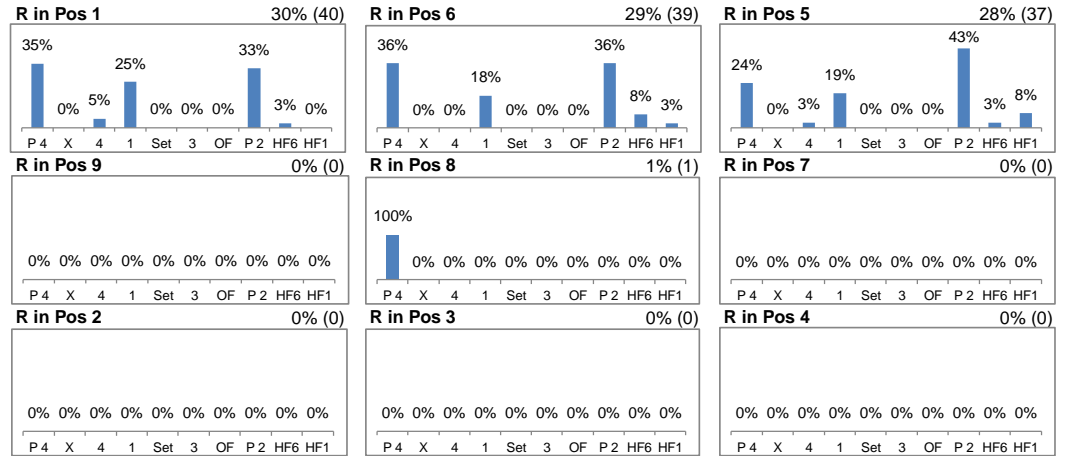
Setter back (S1, S6, S5) - R#+



Setter front (S4, S3, S2) - R#+



Setter back (S1, S6, S5) - all Receptions



Setter front (S4, S3, S2) - all Receptions

