

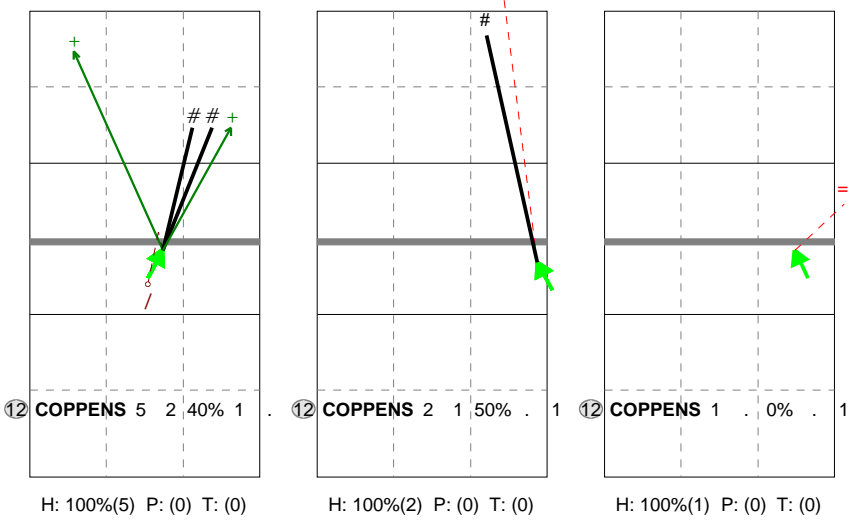
Total Direction Chart analysis

BELGIUM 98' | 12 COPPENS | Atk after Rec | Setter in 1,5,4,2

<b>X1</b>	Ind.	*E%	N	#	#%	=	/
	6	20%	5	2	40%	0	1

<b>CD</b>	Ind.	*E%	N	#	#%	=	/
	5	.	2	1	50%	1	0

<b>CF</b>	Ind.	*E%	N	#	#%	=	/
	.	-100	1	0	0%	1	0



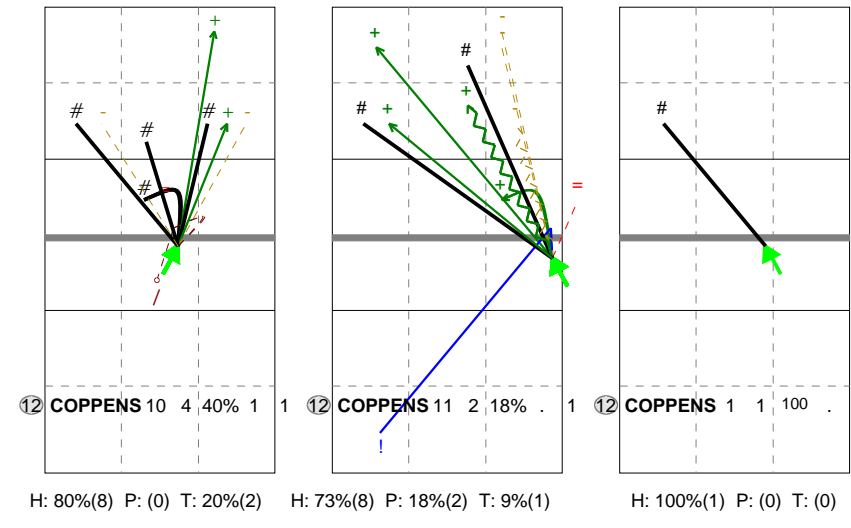
Total Direction Chart analysis

BELGIUM 98' | 12 COPPENS | Transition | AND[\* AO,6][ AM,6][ AH,6]

<b>X1</b>	Ind.	*E%	N	#	#%	=	/
	6	20%	10	4	40%	1	1

<b>CD</b>	Ind.	*E%	N	#	#%	=	/
	5	9%	11	2	18%	1	0

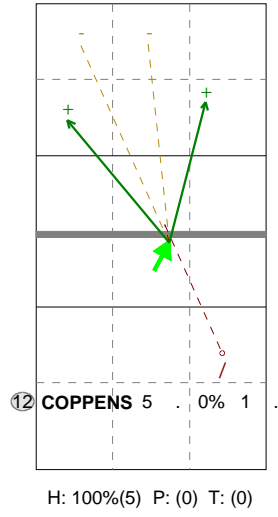
<b>X2</b>	Ind.	*E%	N	#	#%	=	/
	10	100	1	1	100	0	0



Total Direction Chart analysis

BELGIUM 98' | 12 COPPENS | Atk after Rec | Setter in

<b>X1</b>	Ind.	*E%	N	#	#%	=	/
	4	-20	5	0	0%	0	1



Ind.	*E%	N	=	#%	#	/
5	22%	51	9	18%	7	1

Ind.	*E%	N	=	#%	#	/
4	23%	22	3	14%	3	0

Ind.	*E%	N	=	#%	#	/
4	12%	16	4	25%	0	1

