

Total Direction Chart analysis

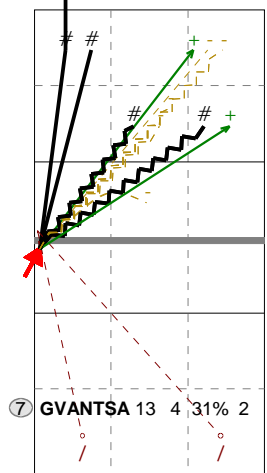
GEORGIA | 7 GVANTSA | Atk after Rec | AND[AO,6]

V5 Ind. *E% N # #% = / 2
6 15% 13 4 31% 0 / 2

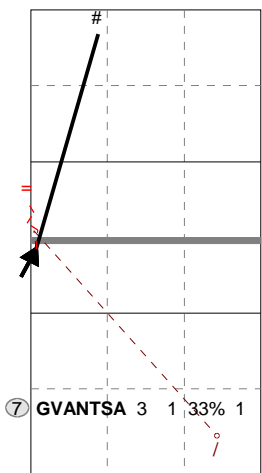
X5 Ind. *E% N # #% = / 1
3 -33 3 1 33% 1 / 1

VP Ind. *E% N # #% = / 0
3 -33 3 0 0% 1 / 0

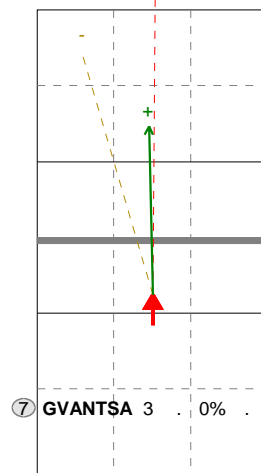
V4 Ind. *E% N # #% = / 0
5 . 1 0 0% 0 / 0



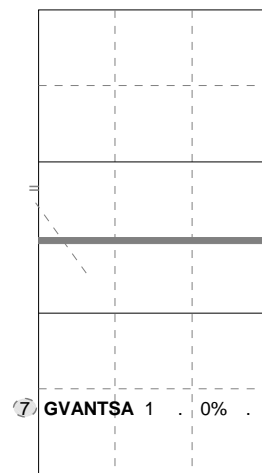
H: 54%(7) P: 38%(5) T: 8%(1)



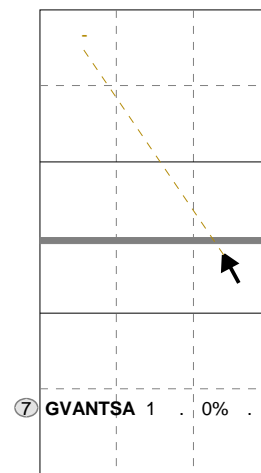
H: 67%(2) P: 33%(1) T: (0)



H: 100%(3) P: (0) T: (0)



H: 100%(1) P: (0) T: (0)



H: 100%(1) P: (0) T: (0)

Total Direction Chart analysis

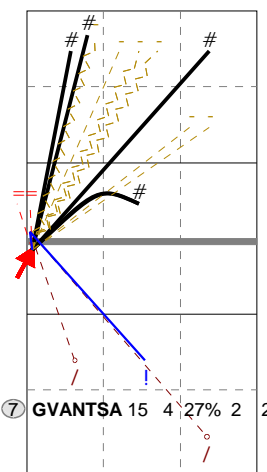
GEORGIA | 7 GVANTSA | Transition | AND[AO,6]

V5 Ind. *E% N # #% = / 2
5 . 15 4 27% 2 / 2

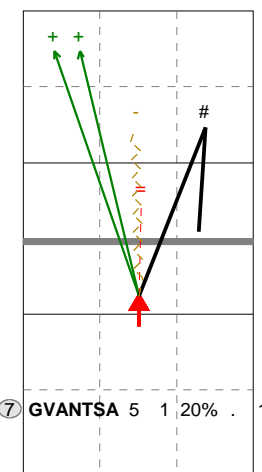
VP Ind. *E% N # #% = / 0
5 . 5 1 20% 1 / 0

X5 Ind. *E% N # #% = / 0
10 100 2 2 100 0 / 0

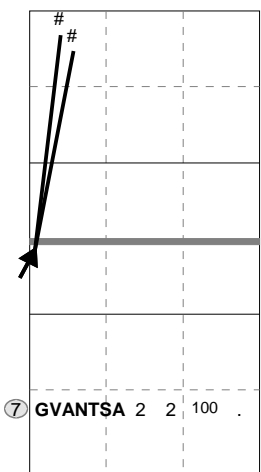
V9 Ind. *E% N # #% = / 1
2 -50 2 0 0% 0 / 1



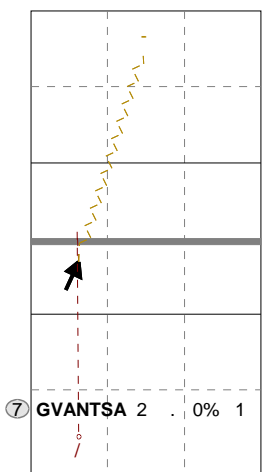
H: 73%(11) P: 20%(3) T: 7%(1)



H: 80%(4) P: 20%(1) T: (0)



H: 100%(2) P: (0) T: (0)



H: 50%(1) P: 50%(1) T: (0)

Ind. *E% N # #% = /
4 10% 31 6 19% 3 0

