

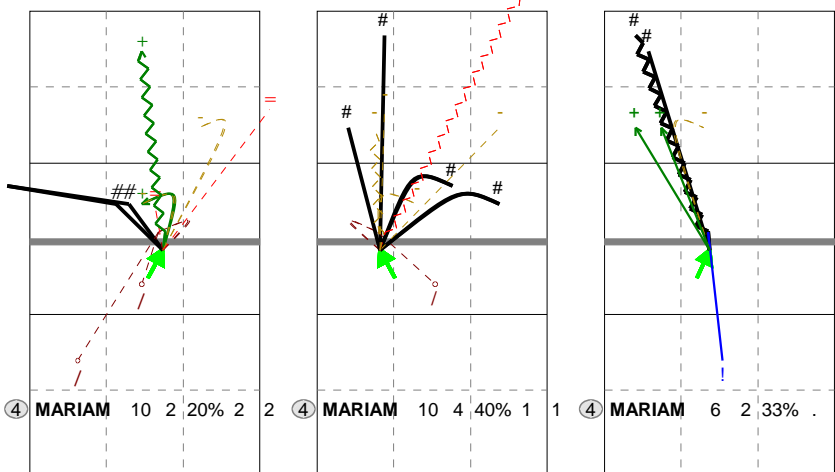
Total Direction Chart analysis

GEORGIA | 4 MARIAM | Atk after Rec | Setter in 1,5,4,2

X1	Ind.	*E%	N	#	#%	=	/
	4	-20	10	2	20%	2	2

X7	Ind.	*E%	N	#	#%	=	/
	6	20%	10	4	40%	1	1

XC	Ind.	*E%	N	#	#%	=	/
	6	33%	6	2	33%	0	0



H: 50%(5) P: 10%(1) T: 40%(4) H: 40%(4) P: 20%(2) T: 40%(4) H: 67%(4) P: 17%(1) T: 17%(1)

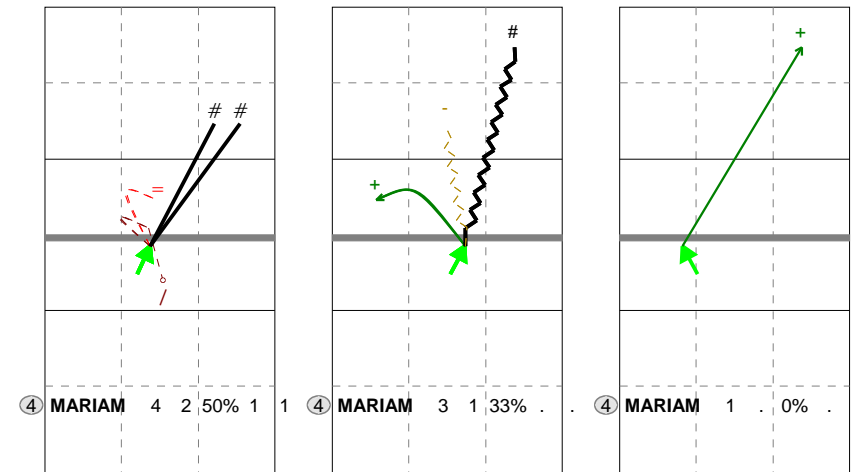
Total Direction Chart analysis

GEORGIA | 4 MARIAM | Transition | AND[*~~AO,6][~~~AM,6][~~~AH,6]

XC	Ind.	*E%	N	#	#%	=	/
	5	.	4	2	50%	1	1

X1	Ind.	*E%	N	#	#%	=	/
	7	33%	3	1	33%	0	0

X7	Ind.	*E%	N	#	#%	=	/
	5	.	1	0	0%	0	0

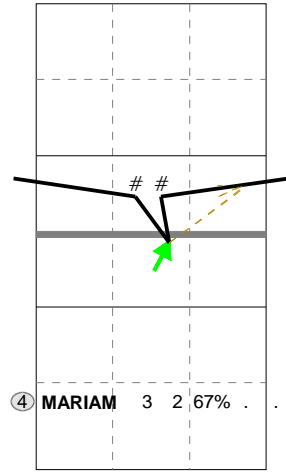


H: 50%(2) P: (0) T: 50%(2) H: (0) P: 67%(2) T: 33%(1) H: 100%(1) P: (0) T: (0)

Total Direction Chart analysis

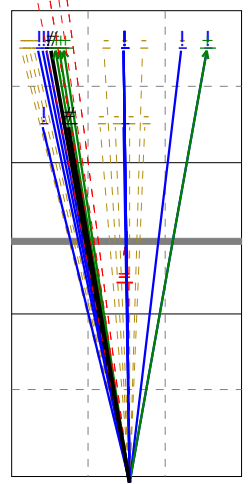
GEORGIA | 4 MARIAM | Atk after Rec | Setter in 6,3

X1	Ind.	*E%	N	#	#%	=	/
	8	67%	3	2	67%	0	0

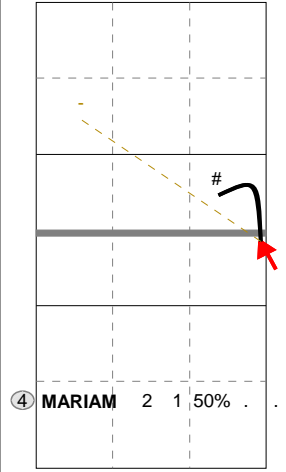


H: 67%(2) P: (0) T: 33%(1)

Ind.	*E%	N	=	#%	#	/
2	-10	39	10	26%	2	0



V6	Ind.	*E%	N	#	#%	=	/
	8	50%	2	1	50%	0	0



H: 50%(1) P: (0) T: 50%(1)