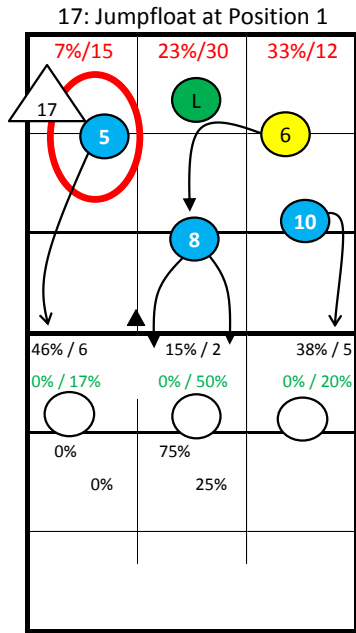


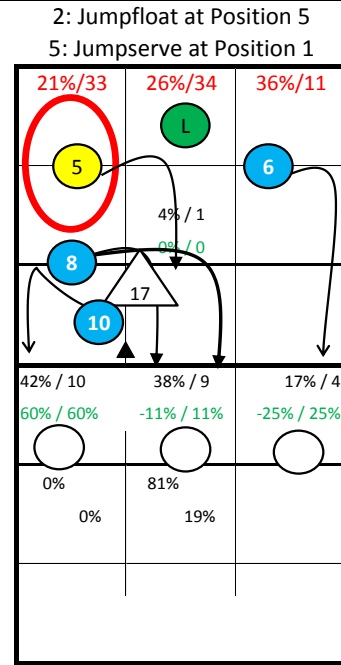
# Roster

1 Meidlová	Out
2 Černá	Out
3 Valentová	Lib
4 Jandová	MB
5 Valášková	Out
6 Mikelová	Out
8 Frommová	MB
10 Kopáčová	Opp
13 Šloufová	Set
15 Vanková	Lib
16 Cruz	MB
17 Baumruková	Set

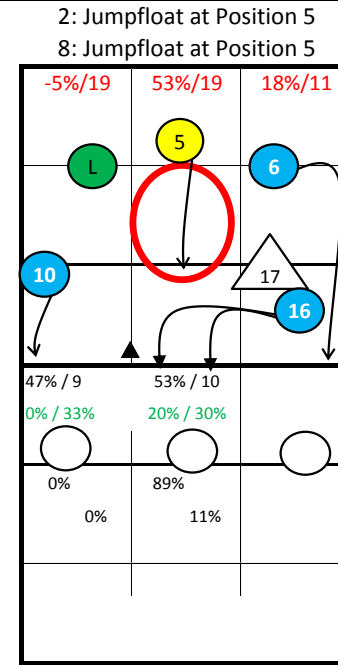
# CZECH REPUBLIC 98'



S1



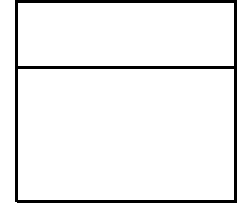
S6



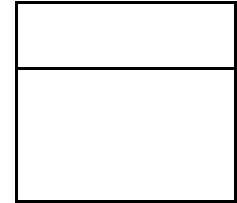
S5



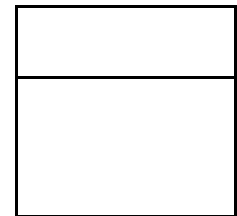
S1



S6



S5



S4



S3



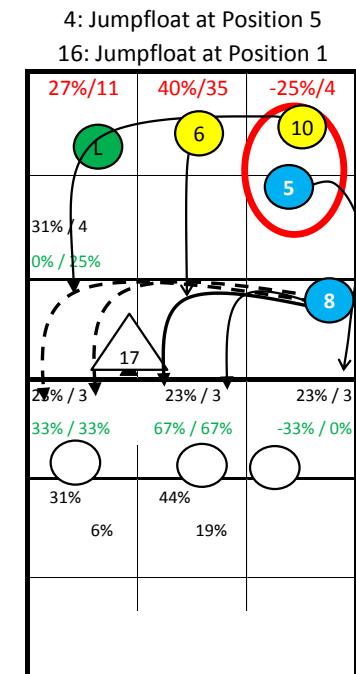
S2

## Starting Lineup:

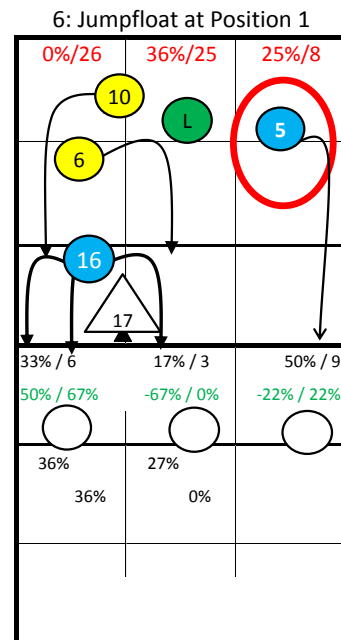
17	16/4	6
L: 3/15		
5/2	8/2	10/2

## Rotation:

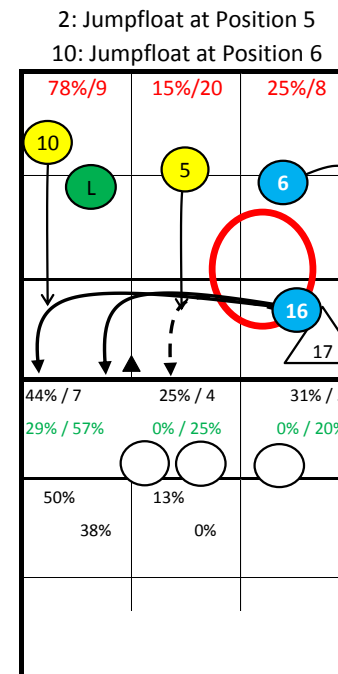
Ser: S1  
Rec: S2



S2

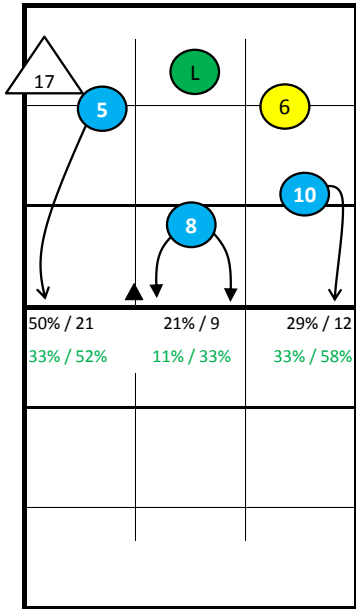


S3

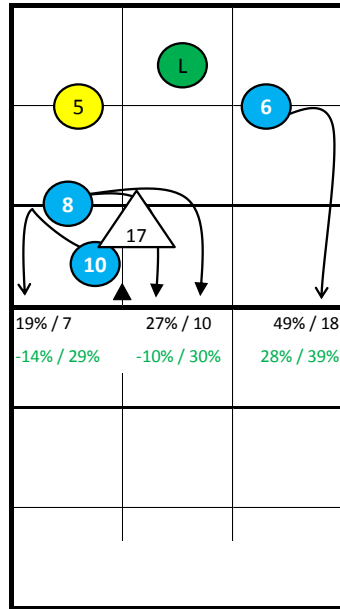


S4

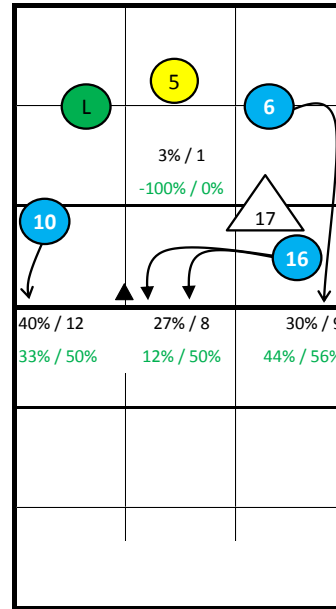
# CZECH REPUBLIC 98'



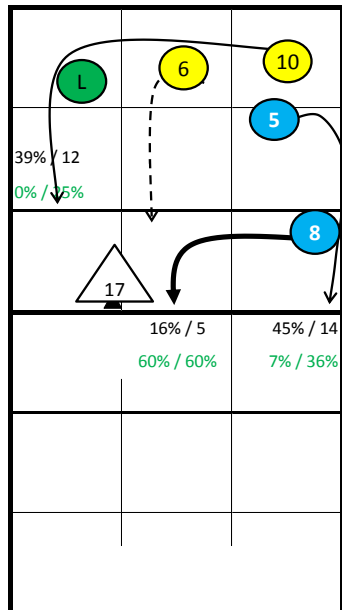
S1



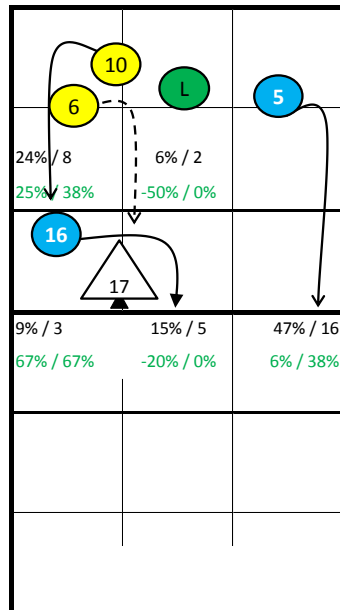
S6



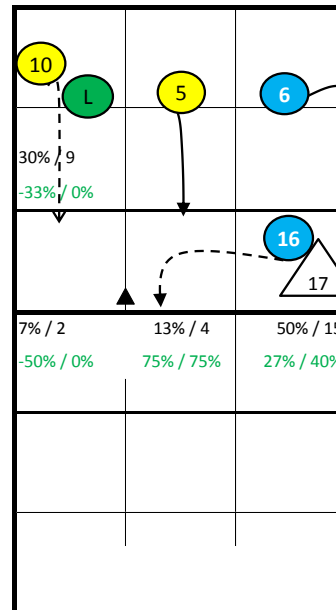
S5



S2



S3



S4

## CZECH REPUBLIC 98' - all Statistics

pId Set	Points					Serve							Reception										Attack												
	pts	P/s	easy=	all=	W-L	Σ	=	-	+	#	=%	#%	eff%	Σ	in %	=	/	-	+	#	=/%	+#%	#%	eff%	Σ	in %	=	/	!	+	#	=/%	#%	eff%	
<b>CZECH REPUBLIC 98'</b>	21	257	12,2	194	432	-175	401	61	129	177	34	15%	8%	21%	412	39	8	230	77	58	11%	33%	14%	21%	580	90	58	30	91	189	26%	33%	7%		
1 Meidlová	2	5	2,5	4	9	-4	7	1	2	4	0	14%	0%	29%	12	3%	1	1	5	2	3	17%	42%	25%	25%	21	4%	3	2	1	2	5	24%	24%	0%
2 Černá	17	33	1,9	20	40	-7	43	6	12	16	9	14%	21%	23%	32	8%	2	1	23	3	3	9%	18%	9%	9%	73	13%	12	5	6	12	20	23%	27%	4%
3 Valentová	19	0		2	35	-35	0							128	31%	14	2	62	23	27	13%	39%	21%	27%	0										
4 Jandová	9	9	1,0	11	22	-13	26	5	9	10	2	19%	8%	12%	0										16	3%	2	1	0	2	5	19%	31%	12%	
5 Valášková	17	40	2,4	27	50	-10	36	12	8	14	2	33%	6%	3%	99	24%	5	1	65	15	13	6%	28%	13%	22%	102	18%	13	7	7	22	35	20%	34%	15%
6 Mikelová	21	44	2,1	26	60	-16	57	8	19	26	4	14%	7%	23%	103	25%	8	3	55	27	10	11%	36%	10%	25%	116	20%	15	13	4	21	37	24%	32%	8%
8 Frommová	10	7	0,7	9	22	-15	26	5	8	12	1	19%	4%	4%	2	0%	0	0	2	0	0	0%	0%	0%	0%	16	3%	3	3	3	1	2	38%	12%	-25%
10 Kopáčová	20	75	3,8	52	91	-16	61	11	16	28	6	18%	10%	23%	2	0%	1	0	0	1	0	50%	50%	0%	0%	171	29%	33	19	5	21	62	30%	36%	6%
13 Šloufová	11	1	0,1	3	9	-8	24	0	11	13	0	0%	0%	12%	1	0%	1	0	0	0	0	100%	0%	0%	-100%	4	1%	0	1	0	0	1	25%	25%	0%
15 Vanková	5	0		1	10	-10	0							29	7%	6	0	16	5	2	21%	24%	7%	3%	0										
16 Cruz	20	29	1,5	18	42	-13	54	5	19	27	3	9%	6%	35%	1	0%	0	0	1	0	0%	100%	0%	100%	44	8%	8	4	3	6	17	27%	39%	11%	
17 Baumruková	19	14	0,7	21	42	-28	67	8	25	27	7	12%	10%	27%	3	1%	1	0	2	0	0	33%	0%	0%	-33%	17	3%	1	3	1	4	5	24%	29%	6%

	Block						Defense						Freeball					Set		
	Σ	=	+	#	#%	eff%	Σ	=	/-!	+#	+#%	eff%	Σ	err	bad	god	eff%	Σ	=	eff%
<b>CZECH REPUBLIC 98'</b>	177	80	17	34	19%	-10%	365	77	141	147	40%	19%	61	7	46	8	2%	446	20	46%
1 Meidlová	2	1	1	0	0%	0%	3	1	1	1	33%	0%	1	0	0	1	100%	0	0	0%
2 Černá	19	9	2	4	21%	-11%	30	6	15	9	30%	10%	6	0	6	0	0%	9	0	0%
3 Valentová	0						86	19	31	36	42%	20%	8	1	6	1	0%	33	1	0%
4 Jandová	21	14	1	2	10%	-52%	7	0	3	4	57%	57%	1	0	1	0	0%	3	0	0%
5 Valášková	13	7	1	3	23%	-15%	33	6	12	15	45%	27%	6	0	5	1	17%	5	0	0%
6 Mikelová	15	3	3	3	20%	20%	71	10	33	28	39%	25%	12	2	9	1	-8%	13	1	0%
8 Frommová	30	9	2	4	13%	-7%	6	2	1	3	50%	17%	2	0	2	0	0%	2	0	0%
10 Kopáčová	18	7	1	7	39%	11%	43	14	10	19	44%	12%	17	3	10	4	6%	6	3	-50%
13 Šloufová	6	3	1	0	0%	-33%	11	2	5	4	36%	18%	0					97	2	52%
15 Vanková	0						11	3	7	1	9%	-18%	3	1	2	0	-33%	4	0	0%
16 Cruz	40	21	5	9	23%	-5%	19	3	8	8	42%	26%	2	0	2	0	0%	10	1	-10%
17 Baumruková	12	6	0	2	17%	-17%	45	11	15	19	42%	18%	3	0	3	0	0%	264	12	61%

pId Set      played Sets  
 P/s          Points per Set  
 pts          Points  
 easy=        easy errors (serve, net contact, ...)  
 all=          all errors  
 W-L          points - errors  
 Σ            sum of all events  
 in %         in percent of all team events

## CZECH REPUBLIC 98' - Attack-Statistic

	K1 & K2 Attacks								K1 All Attacks								K2 Attacks								K1 aft R other Ply				K1 after own Rec											
	Σ	in %	=	/	#	=/%	#%	eff	Σ	in %	=	/	#	=/%	#%	eff	Σ	in %	=	/	#	=/%	#%	eff	sum	#	#%	eff	sum	#	#%	eff								
<b>CZECH REPUBLIC 98'</b>	533		85	51	173	26%	32%	7%	315		45	38	98	26%	31%	5%	218		40	13	75	24%	34%	10%	287	90	31%						28	8	29%					
10 Kopáčová	170	32%	33	19	61	31%	36%	5%	104	33%	17	14	38	30%	37%	7%	66	30%	16	5	23	32%	35%	3%	104	38	37%	7%					0							
6 Mikelová	110	21%	15	11	34	24%	31%	7%	62	20%	11	10	16	34%	26%	-8%	48	22%	4	1	18	10%	38%	27%	53	14	26%	-6%	9	2	22%	-22%								
5 Valášková	99	19%	13	7	34	20%	34%	14%	52	17%	7	4	16	21%	31%	10%	47	22%	6	3	18	19%	38%	19%	42	12	29%	5%	10	4	40%	30%								
2 Černá	68	13%	11	5	17	24%	25%	1%	35	11%	3	3	10	17%	29%	11%	33	15%	8	2	7	30%	21%	-9%	29	9	31%	17%	6	1	17%	-17%								
16 Cruz	41	8%	7	4	16	27%	39%	12%	29	9%	3	3	11	21%	38%	17%	12	6%	4	1	5	42%	42%	0%	29	11	38%	17%	0											
1 Meidlová	21	4%	3	2	5	24%	24%	0%	13	4%	1	1	3	15%	23%	8%	8	4%	2	1	2	38%	25%	-12%	10	2	20%	0%	3	1	33%	33%								
4 Jandová	16	3%	2	1	5	19%	31%	12%	14	4%	2	1	4	21%	29%	7%	2	1%	0	0	1	0%	50%	50%	14	4	29%	7%	0											
8 Frommová	7	1%	1	2	1	43%	14%	-29%	6	2%	1	2	0	50%	0%	-50%	1	0%	0	0	1	0%	100%	100%	6	0	0%	-50%	0											
13 Šloufová	1	0%	0	0	0	0%	0%	0%	0								1	0%	0	0	0	0%	0%	0%	0				0											
3 Valentová	0								0								0								0				0											
15 Vanková	0								0								0								0				0											
17 Baumruková	0								0								0								0				0											

	K1 after R#+								K1 after R-!								Freeball-Attacks							
	Σ	in %	=	/	#	=/%	#%	eff	Σ	in %	=	/	#	=/%	#%	eff	Σ	in %	=	/	#	=/%	#%	eff
<b>CZECH REPUBLIC 98'</b>	125		22	14	45	29%	36%	7%	190		23	24	53	25%	28%	3%	26		6	2	12	31%	46%	15%
10 Kopáčová	35	28%	6	4	13	29%	37%	9%	69	36%	11	10	25	30%	36%	6%	4	200%	1	0	2	25%	50%	25%
6 Mikelová	16	13%	5	1	6	38%	38%	0%	46	24%	6	9	10	33%	22%	-11%	1	0	0	0	0	0%	0%	0%
5 Valášková	14	11%	4	2	4	43%	29%	-14%	38	20%	3	2	12	13%	32%	18%	7	233%	2	1	3	43%	43%	0%
2 Černá	14	11%	1	1	7	14%	50%	36%	21	11%	2	2	3	19%	14%	-5%	4	200%	1	0	2	25%	50%	25%
16 Cruz	24	19%	2	3	11	21%	46%	25%	5	3%	1	0	0	20%	0%	-20%	8	200%	2	1	4	38%	50%	12%
1 Meidlová	6	5%	1	1	1	33%	17%	-17%	7	4%	0	0	2	0%	29%	29%	0							
4 Jandová	11	9%	2	1	3	27%	27%	0%	3	2%	0	0	1	0%	33%	33%	1	0	0	0	0	0%	0%	0%
8 Frommová	5	4%	1	1	0	40%	0%	-40%	1	1%	0	1	0	100%	0%	-100%	1	100%	0	0	1	0%	100%	100%
13 Šloufová	0								0								0							
3 Valentová	0								0								0							
15 Vanková	0								0								0							
17 Baumruková	0								0								0							





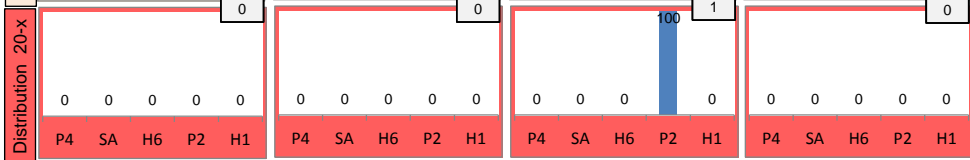
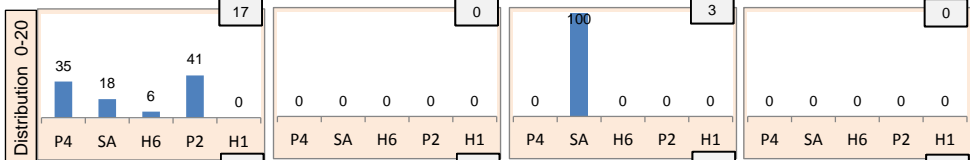
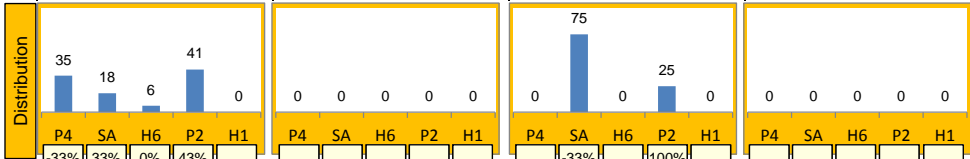
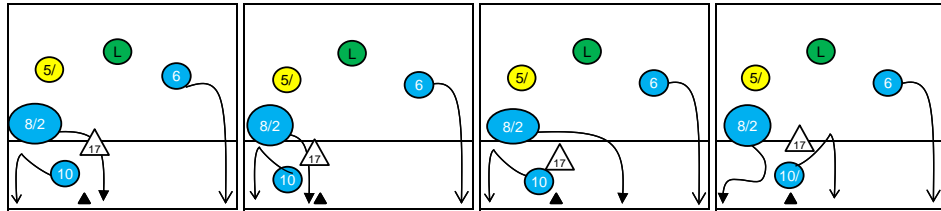
# Rotation 6

# CZECH REPUBLIC 98'

# Distribution

Base K1 81% (17) Base K2 0% (0) Base K7 19% (4) Base KD 0% (0)

K1 after all R 73 -4% 26% K1 after R#+ 31 10% 35% K2 Transition 35 -3% 29%



1	1%	1	1%	0	-
-100%	0%	0%	0%	-	-
34	47%	12	16%	25	34%
6%	35%	0%	17%	-16%	20%

0	-	1	3%	0	-
-	-	0%	0%	-	-
14	45%	9	29%	7	23%
43%	57%	-11%	11%	-29%	29%

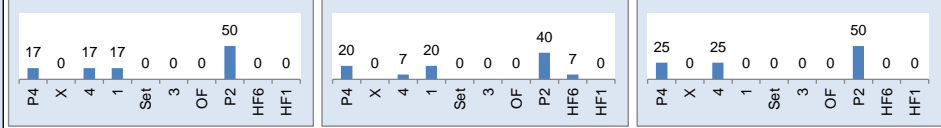
0	-	3	9%	0	-
-	-	-67%	0%	-	-
9	26%	3	9%	20	57%
-33%	22%	-33%	33%	25%	35%

Reception	Σ	Σ %	=	= %	+	+ %	#	# %	+ # %	Eff
CZECH REPUBLIC 98'	97	100%	10	10%	18	19%	15	15%	34%	24%
3 Valentová	34	35%	5	15%	7	21%	7	21%	41%	26%
5 Valášková	33	34%	3	9%	7	21%	3	9%	30%	21%
6 Mikelová	11	11%	0	0%	3	27%	1	9%	36%	36%
2 Černá	7	7%	1	14%	0	0%	1	14%	14%	0%
15 Vanková	6	6%	0	0%	1	17%	1	17%	33%	33%
1 Meidlová	3	3%	0	0%	0	0%	2	67%	67%	67%

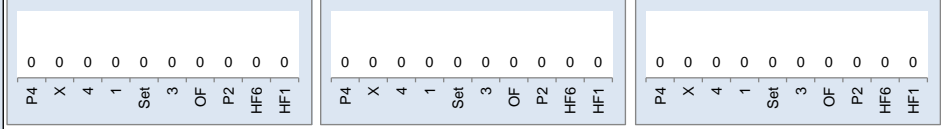
K1-Attacks after R#+	Σ	Σ %	=	= %	#	# %	Eff
CZECH REPUBLIC 98'	31	100%	5	16%	11	35%	10%
10 Kopáčová	12	39%	0	0%	7	58%	42%
6 Mikelová	7	23%	3	43%	2	29%	-29%
4 Jandová	6	19%	2	33%	0	0%	-33%
2 Černá	4	13%	0	0%	2	50%	50%
1 Meidlová	1	3%	0	0%	0	0%	0%
8 Frommová	1	3%	0	0%	0	0%	0%
3 Valentová	0	0%	0	-	0	-	-

K2-Attacks - Transitor	Σ	Σ %	=	= %	#	# %	Eff
CZECH REPUBLIC 98'	35	100%	7	20%	10	29%	-3%
6 Mikelová	18	51%	1	6%	6	33%	22%
10 Kopáčová	9	26%	4	44%	2	22%	-44%
2 Černá	5	14%	2	40%	1	20%	-20%
4 Jandová	1	3%	0	0%	1	100%	100%
5 Valášková	1	3%	0	0%	0	0%	-100%
13 Šloufová	1	3%	0	0%	0	0%	0%
1 Meidlová	0	0%	0	-	0	-	-

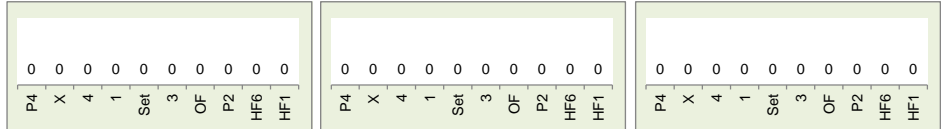
Rec in Pos 1 39% (12) Rec in Pos 6 48% (15) Rec in Pos 5 13% (4)



Rec in Pos 2 0% (0) Rec in Pos 3 0% (0) Rec in Pos 4 0% (0)



Settermovement to 4 0 Settermovement to 3 0 Settermovement to 2 0



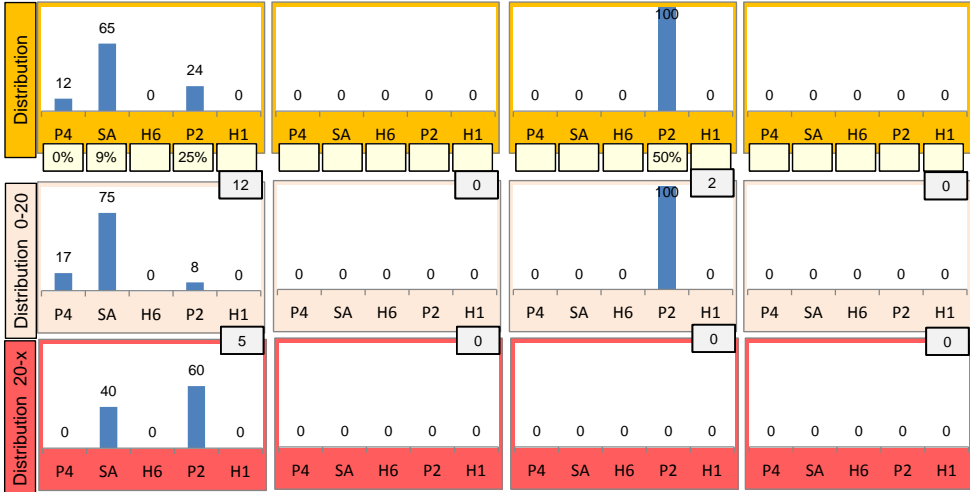
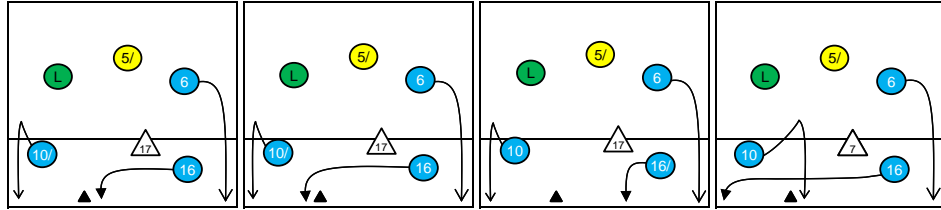
# Rotation 5

# CZECH REPUBLIC 98'

# Distribution

Base K1 89% (17) Base K2 0% (0) Base K7 11% (2) Base KD 0% (0)

K1 after all R 51 -4% 29% K1 after R#+ 24 12% 38% K2 Transition 29 24% 45%

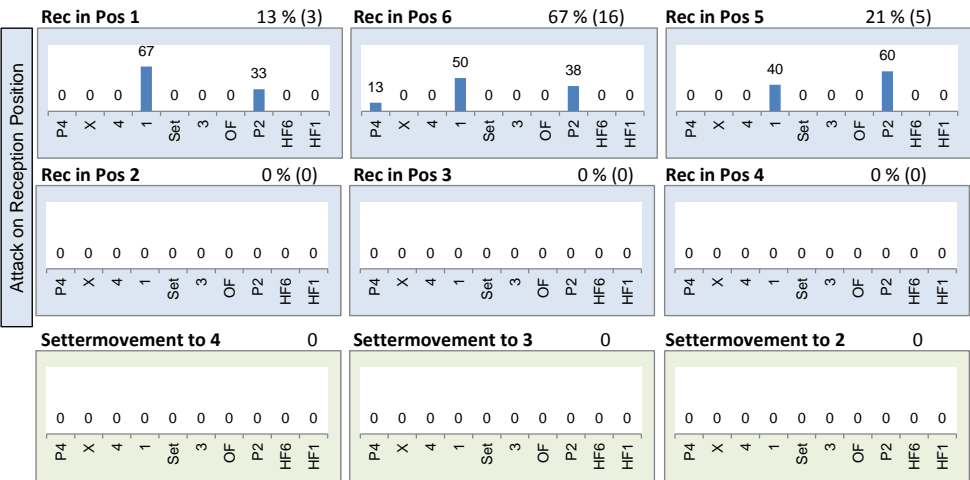


Player	0	-	0	-	0	-	0	-	0	-	0	-	0	-	0	-	0	-
20	39%	13	25%	18	35%	10	42%	12	50%	2	8%	13	45%	5	17%	10	34%	
5%	35%	8%	31%	-22%	22%	10%	40%	17%	33%	0%	50%	31%	46%	0%	40%	40%	50%	

Reception	Σ	Σ %	=	= %	+	+ %	#	# %	+ # %	Eff
CZECH REPUBLIC 98'	66	100%	10	15%	12	18%	12	18%	36%	21%
3 Valentová	19	29%	6	32%	1	5%	4	21%	26%	-5%
5 Valášková	19	29%	0	0%	4	21%	6	32%	53%	53%
6 Mikelová	11	17%	1	9%	3	27%	0	0%	27%	18%
2 Černá	10	15%	0	0%	0	0%	2	20%	20%	20%
15 Vanková	5	8%	2	40%	3	60%	0	0%	60%	20%
1 Meidlová	1	2%	0	0%	1	100%	0	0%	100%	100%

K1-Attacks after R#+	Σ	Σ %	=	= %	#	# %	Eff
CZECH REPUBLIC 98'	24	100%	4	17%	9	38%	12%
16 Cruz	10	42%	0	0%	4	40%	30%
10 Kopáčová	9	38%	3	33%	3	33%	0%
4 Jandová	2	8%	0	0%	0	0%	-50%
6 Mikelová	2	8%	1	50%	1	50%	0%
2 Černá	1	4%	0	0%	1	100%	100%
1 Meidlová	0	0%	0	-	0	-	-
3 Valentová	0	0%	0	-	0	-	-

K2-Attacks - Transition	Σ	Σ %	=	= %	#	# %	Eff
CZECH REPUBLIC 98'	29	100%	5	17%	13	45%	24%
10 Kopáčová	13	45%	1	8%	6	46%	31%
6 Mikelová	10	34%	1	10%	5	50%	40%
16 Cruz	5	17%	2	40%	2	40%	0%
5 Valášková	1	3%	1	100%	0	0%	-100%
1 Meidlová	0	0%	0	-	0	-	-
2 Černá	0	0%	0	-	0	-	-
3 Valentová	0	0%	0	-	0	-	-



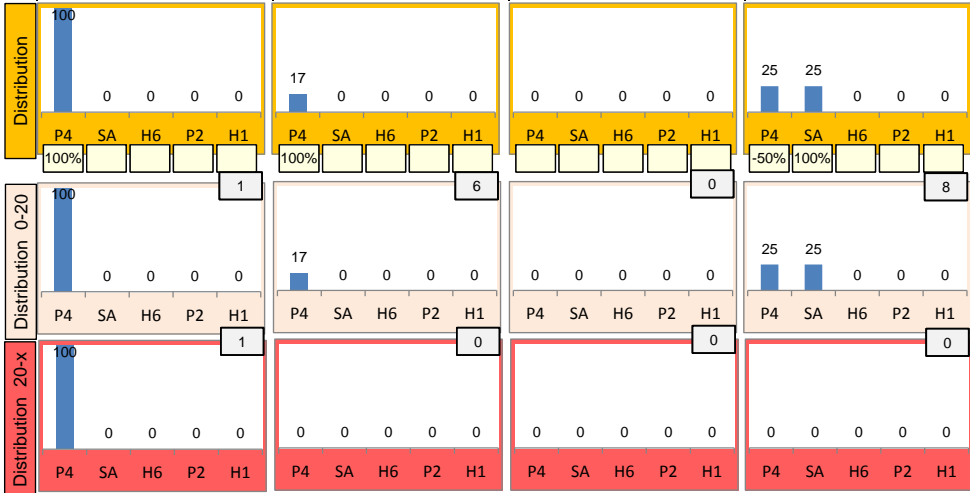
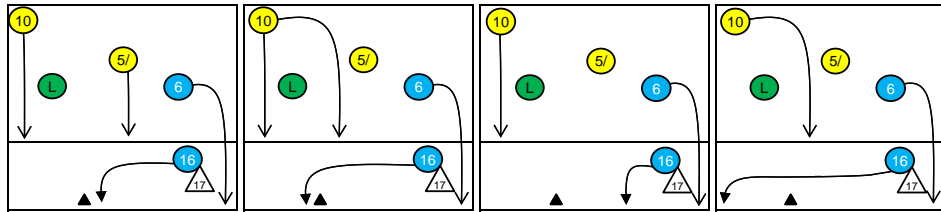


# Rotation 4

# CZECH REPUBLIC 98'

# Distribution

Base K1 13% (2) Base K2 38% (6) Base K7 0% (0) Base KD 50% (8)



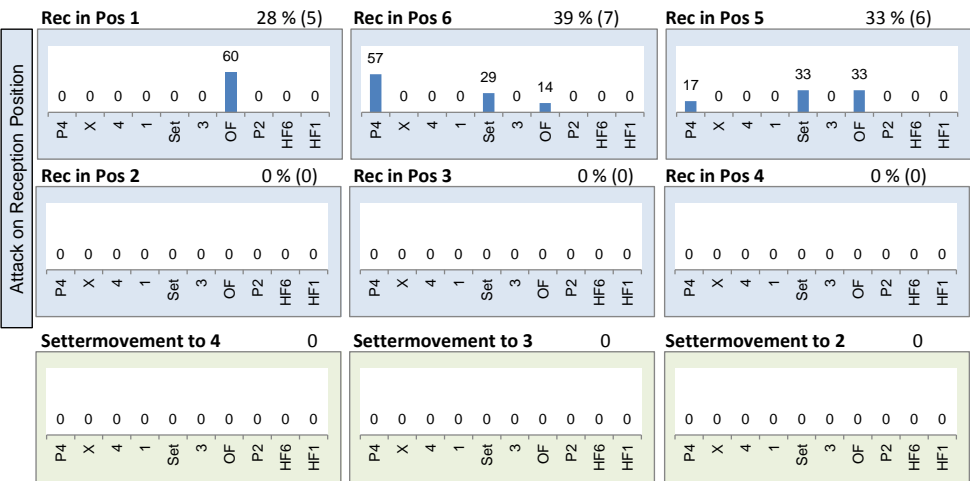
K1 after all R 34 18% 38% K1 after R#+ 14 29% 50% K2 Transition 37 0% 24%

5	15%	1	3%	0	-	0	-	0	-	0	-	11	30%	2	5%	0	-
40%	40%	0%	0%	-	-	-	-	-	-	-	-	-45%	0%	0%	0%	-	-
7	21%	0	-	21	62%	7	50%	0	-	7	50%	2	5%	2	5%	20	54%
29%	57%	-	-	10%	33%	29%	57%	-	-	29%	43%	-50%	0%	0%	50%	30%	40%

Reception	∑	∑ %	=	= %	+	+ %	#	# %	+ # %	Eff
CZECH REPUBLIC 98'	49	100%	6	12%	7	14%	11	22%	37%	24%
5 Valášková	20	41%	1	5%	1	5%	3	15%	20%	15%
3 Valentová	9	18%	0	0%	3	33%	4	44%	78%	78%
6 Mikelová	8	16%	2	25%	1	13%	3	38%	50%	25%
2 Černá	6	12%	0	0%	2	33%	0	0%	33%	33%
15 Vanková	4	8%	2	50%	0	0%	0	0%	0%	-50%
1 Meidlová	1	2%	0	0%	0	0%	1	100%	100%	100%

K1-Attacks after R#+	∑	∑ %	=	= %	#	# %	Eff
CZECH REPUBLIC 98'	14	100%	2	14%	7	50%	29%
6 Mikelová	7	50%	1	14%	3	43%	29%
16 Cruz	7	50%	1	14%	4	57%	29%
1 Meidlová	0	0%	0	-	0	-	-
2 Černá	0	0%	0	-	0	-	-
3 Valentová	0	0%	0	-	0	-	-
4 Jandová	0	0%	0	-	0	-	-
5 Valášková	0	0%	0	-	0	-	-

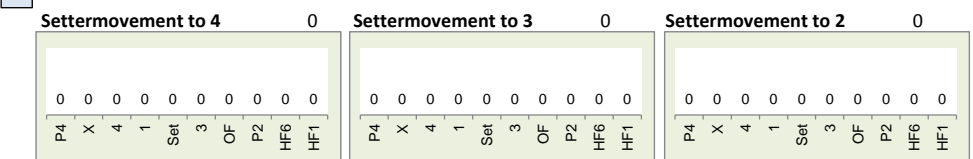
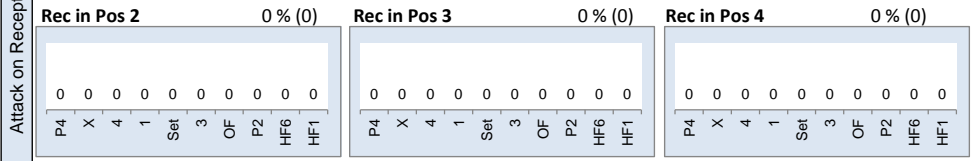
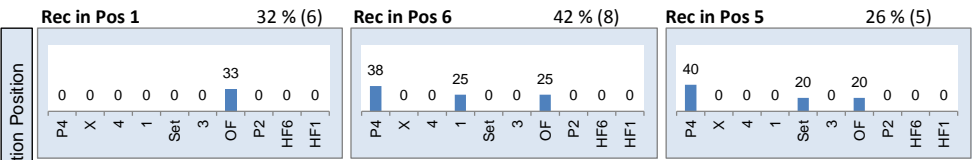
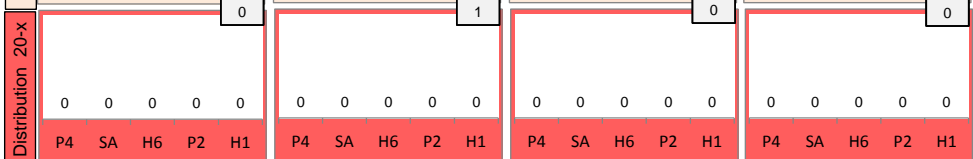
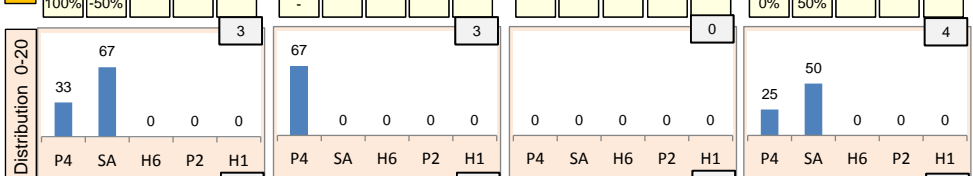
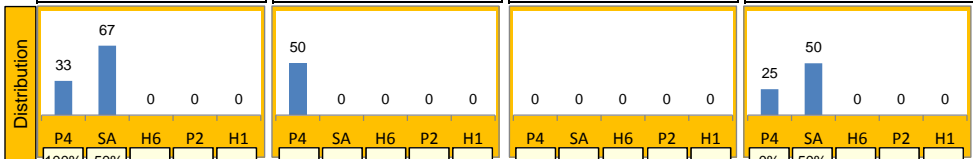
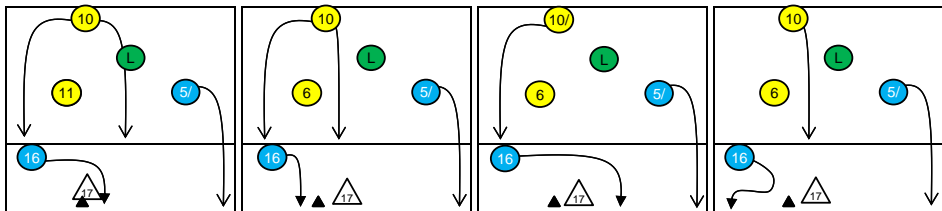
K2-Attacks - Transitor	∑	∑ %	=	= %	#	# %	Eff
CZECH REPUBLIC 98'	37	100%	8	22%	9	24%	0%
6 Mikelová	18	49%	1	6%	7	39%	33%
10 Kopáčová	8	22%	5	63%	0	0%	-62%
2 Černá	6	16%	1	17%	1	17%	0%
16 Cruz	3	8%	1	33%	1	33%	-33%
5 Valášková	2	5%	0	0%	0	0%	0%
1 Meidlová	0	0%	0	-	0	-	-
3 Valentová	0	0%	0	-	0	-	-



# Rotation 3

# CZECH REPUBLIC 98'

Base K1 27% (3) Base K2 36% (4) Base K7 0% (0) Base KD 36% (4)



# Distribution

K1 after all R 46 13% 33% K1 after R#+ 18 6% 39% K2 Transition 40 10% 33%

	5	6	9	33%	11%	20%	44%	0	3	-33%	0%	0	7%	0%	29	63%	24%
5	11%	0	0	0	0	0	0	0	0	0	0	0	0	0	0	0	0
6	0	11%	3	7%	29	63%	24%	0	0	0	0	0	0	0	0	0	0
9	0	0	0	0	0	0	0	0	0	0	0	0	0	0	0	0	0
33%	80%	80%	-	-	-	-	-	-	-	-	-	-	-	-	-	-	-

Reception	Σ	Σ %	=	= %	+	+ %	#	# %	+ # %	Eff
CZECH REPUBLIC 98'	64	100%	8	13%	13	20%	7	11%	31%	19%
6 Mikelová	26	41%	5	19%	5	19%	0	0%	19%	0%
3 Valentová	25	39%	2	8%	5	20%	6	24%	44%	36%
5 Valášková	8	13%	1	13%	2	25%	1	13%	38%	25%
2 Černá	2	3%	0	0%	0	0%	0	0%	0%	0%
15 Vanková	2	3%	0	0%	0	0%	0	0%	0%	0%
16 Cruz	1	2%	0	0%	1	100%	0	0%	100%	100%

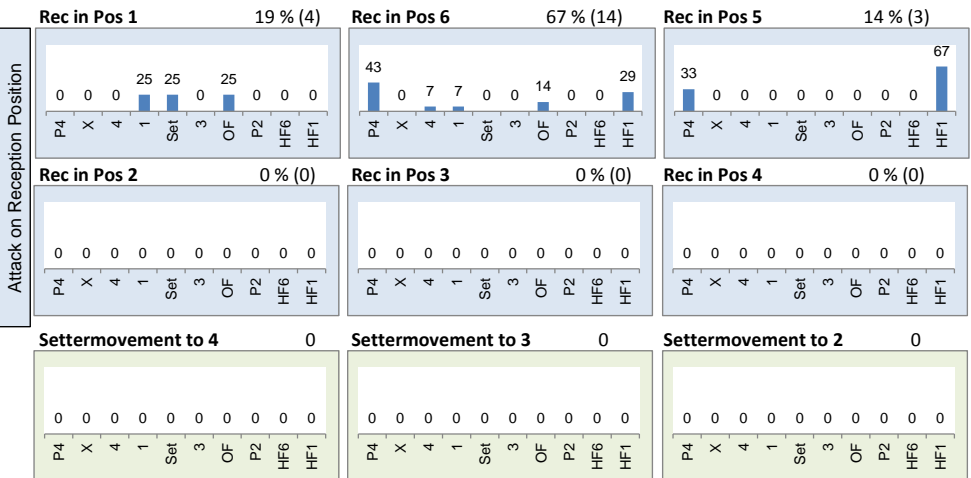
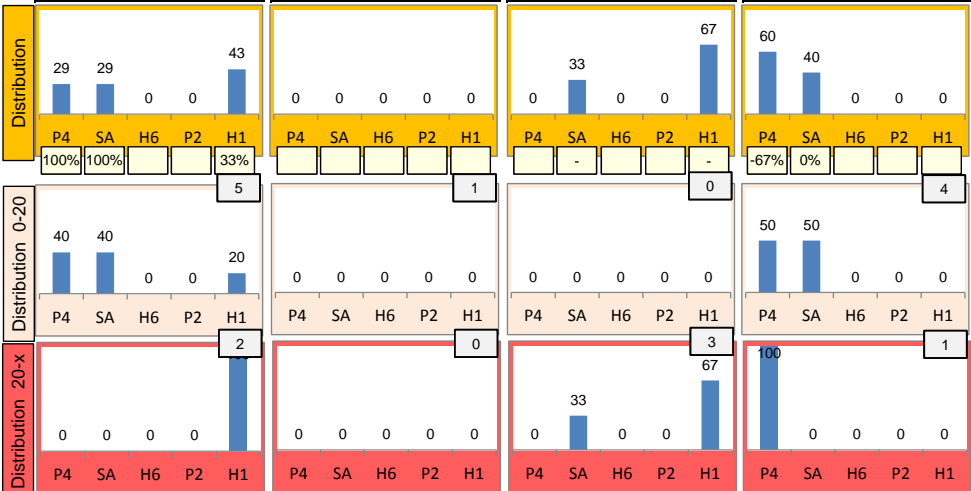
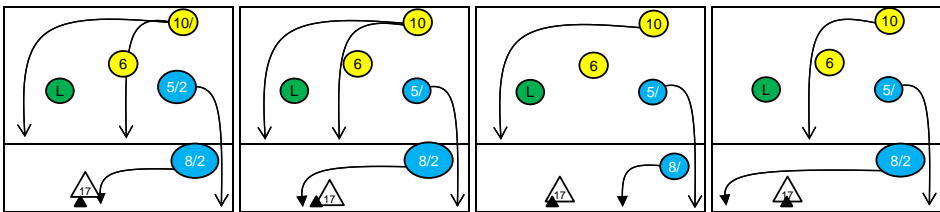
K1-Attacks after R#+	Σ	Σ %	=	= %	#	# %	Eff
CZECH REPUBLIC 98'	18	100%	4	22%	7	39%	6%
16 Cruz	7	39%	1	14%	3	43%	14%
5 Valášková	5	28%	2	40%	2	40%	0%
1 Meidlová	3	17%	1	33%	1	33%	0%
2 Černá	2	11%	0	0%	0	0%	-50%
4 Jandová	1	6%	0	0%	1	100%	100%
3 Valentová	0	0%	0	-	0	-	-
6 Mikelová	0	0%	0	-	0	-	-

K2-Attacks - Transition	Σ	Σ %	=	= %	#	# %	Eff
CZECH REPUBLIC 98'	40	100%	8	20%	13	33%	10%
5 Valášková	13	33%	0	0%	6	46%	46%
10 Kopáčová	9	23%	2	22%	2	22%	0%
2 Černá	7	18%	2	29%	2	29%	-14%
1 Meidlová	5	13%	2	40%	1	20%	-20%
16 Cruz	4	10%	1	25%	2	50%	25%
6 Mikelová	2	5%	1	50%	0	0%	-50%
3 Valentová	0	0%	0	-	0	-	-

# Rotation 2

# CZECH REPUBLIC 98'

Base K1 44% (7) Base K2 6% (1) Base K7 19% (3) Base KD 31% (5)



# Distribution

K1 after all R 47 9% 34% K1 after R#+ 20 -5% 30% K2 Transition 36 -6% 25%

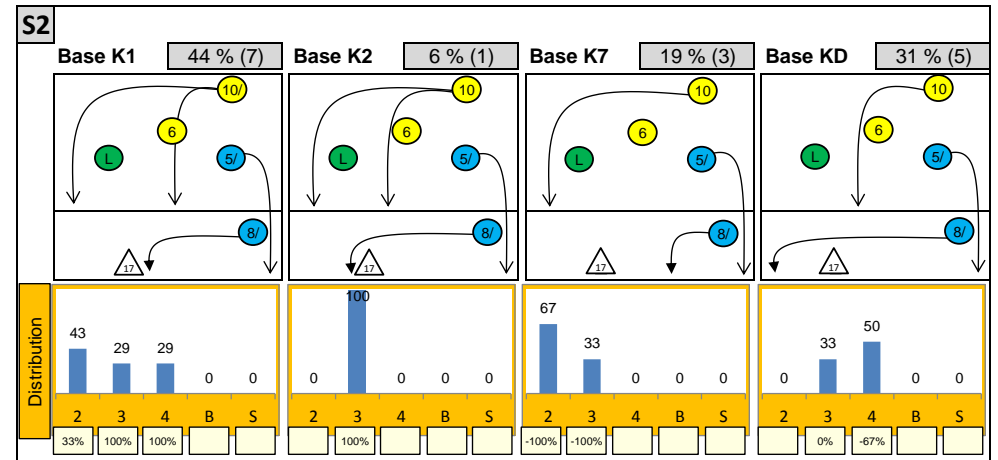
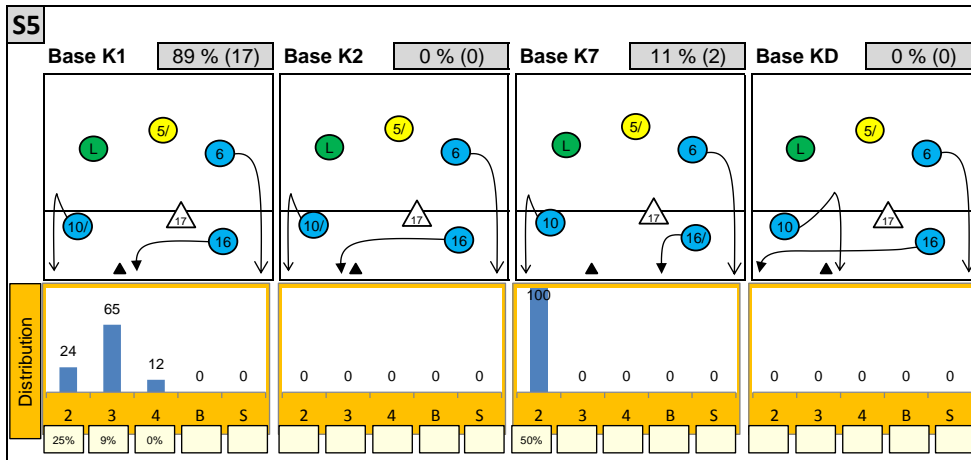
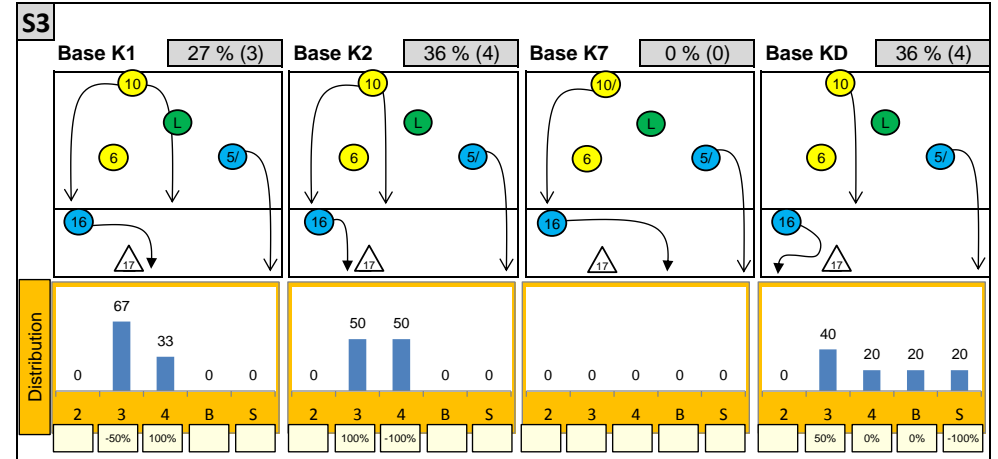
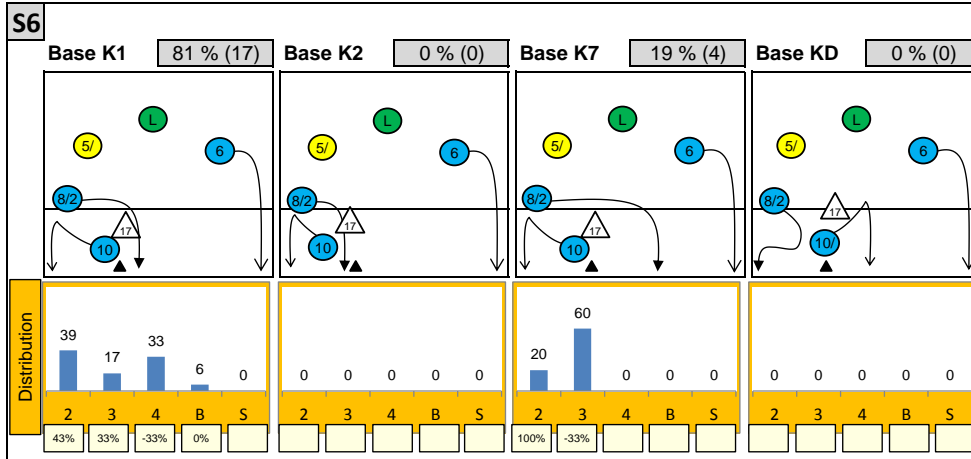
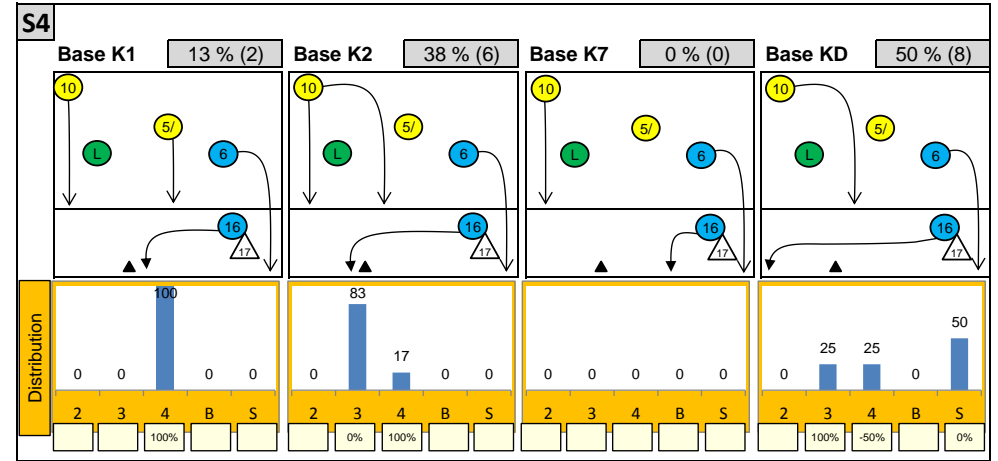
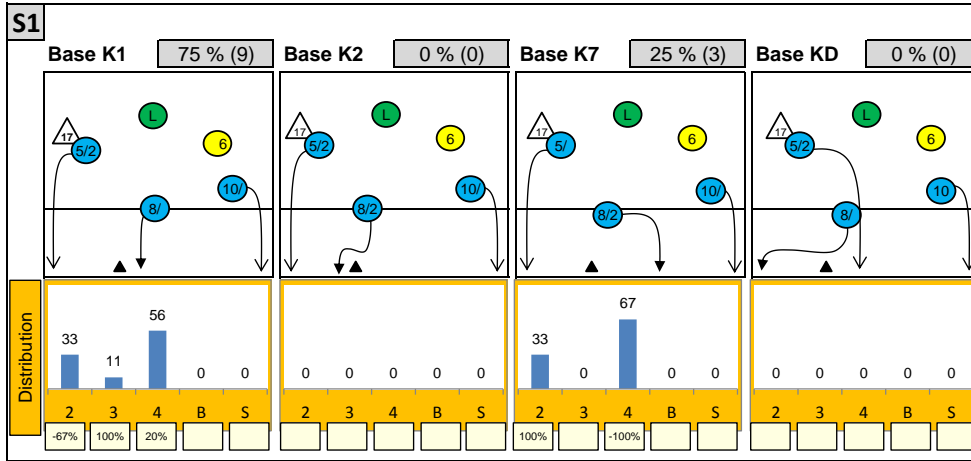
Player	9	19%	2	4%	0	-	6	30%	0	-	0	-	14	39%	0	-	0	-
0%	22%	0%	50%	-	-	-17%	17%	-	-	-	-	-7%	21%	-	-	-	-	
3	6%	3	6%	30	64%	3	15%	3	15%	8	40%	0	-	1	3%	21	58%	
33%	33%	33%	67%	7%	33%	33%	33%	33%	67%	-25%	25%	-	-	0%	0%	-5%	29%	

Reception	Σ	Σ %	=	= %	+	+ %	#	# %	+ # %	Eff
CZECH REPUBLIC 98'	58	100%	7	12%	12	21%	10	17%	38%	26%
6 Mikelová	35	60%	2	6%	10	29%	6	17%	46%	40%
3 Valentová	11	19%	2	18%	1	9%	4	36%	45%	27%
5 Valášková	4	7%	1	25%	0	0%	0	0%	0%	-25%
15 Vanková	4	7%	1	25%	0	0%	0	0%	0%	-25%
2 Černá	3	5%	1	33%	1	33%	0	0%	33%	0%
1 Meidlová	1	2%	0	0%	0	0%	0	0%	0%	0%

K1-Attacks after R#+	Σ	Σ %	=	= %	#	# %	Eff
CZECH REPUBLIC 98'	20	100%	3	15%	6	30%	-5%
10 Kopáčová	6	30%	1	17%	1	17%	-17%
2 Černá	4	20%	1	25%	2	50%	25%
5 Valášková	3	15%	1	33%	1	33%	-33%
8 Frommová	3	15%	0	0%	0	0%	-33%
1 Meidlová	2	10%	0	0%	0	0%	-50%
4 Jandová	2	10%	0	0%	2	100%	100%
3 Valentová	0	0%	0	-	0	-	-

K2-Attacks - Transitor	Σ	Σ %	=	= %	#	# %	Eff
CZECH REPUBLIC 98'	36	100%	8	22%	9	25%	-6%
5 Valášková	15	42%	4	27%	5	33%	0%
2 Černá	9	25%	2	22%	2	22%	0%
10 Kopáčová	9	25%	2	22%	1	11%	-22%
1 Meidlová	3	8%	0	0%	1	33%	0%
3 Valentová	0	0%	0	-	0	-	-
4 Jandová	0	0%	0	-	0	-	-
6 Mikelová	0	0%	0	-	0	-	-

# Attackdistribution depending on Settercalls - CZECH REPUBLIC 98'



2: Attack of Opposite    3: Attack of Middleblocker    4: Attack of Outside    B: Attack of Backrow

S: Attack of Setter    xx%: Efficiency of Attacks (-100% to +100%)

