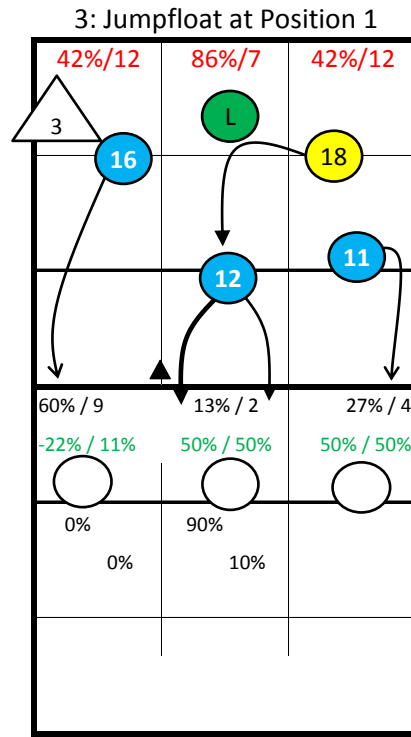


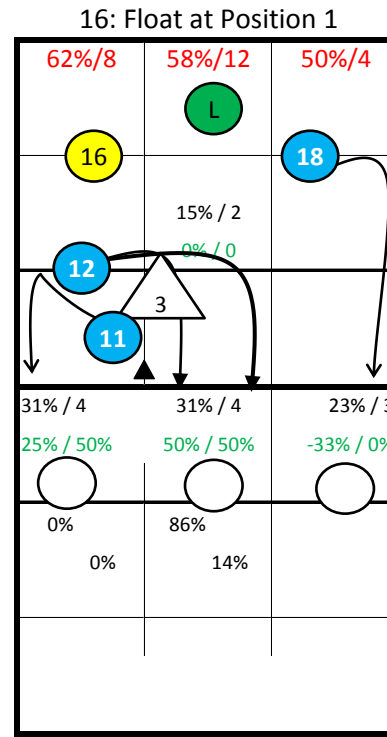
Roster

2 Berger	Lib
3 Schmit	Set
4 Peischl	Out
5 Gesslbauer	Out
6 Oppenauer	MB
8 Holzer	Opp
11 Maros	Opp
12 Nasimovic	MB
14 Grebien	
16 Markovic	Out
17 Fink	Out
18 Radl	Out

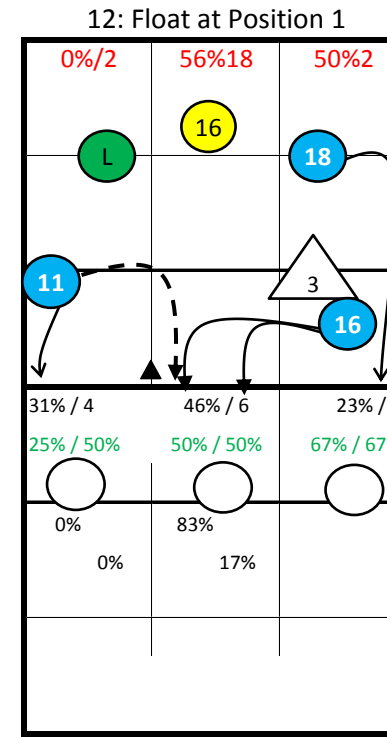
Austria96 -



S1

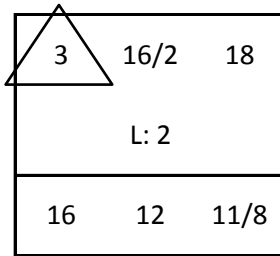


S6



S5

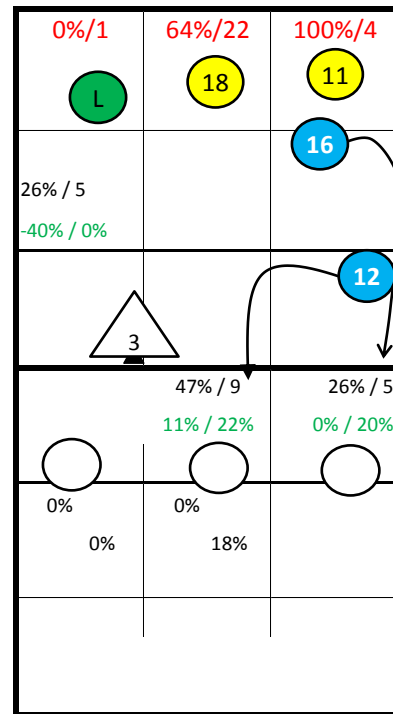
Starting Lineup:



Rotation:

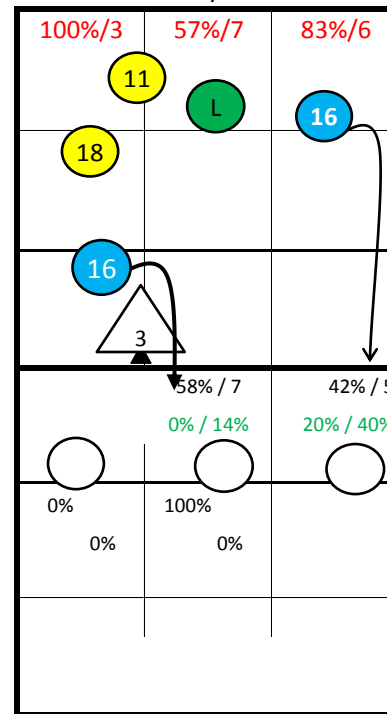
Ser: S1
Rec: S2

2: Float at Position 5
16: Float at Position 1



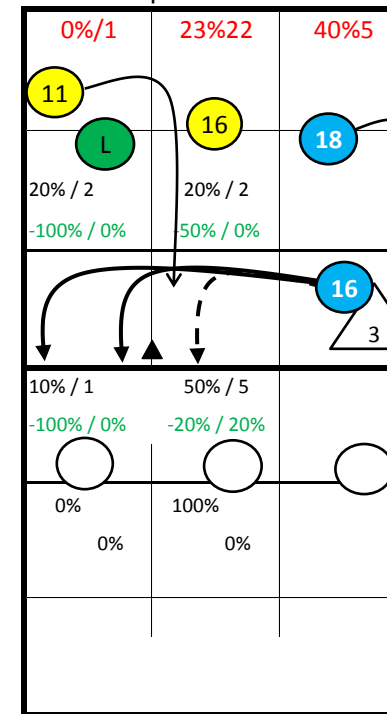
S2

#N/A



S3

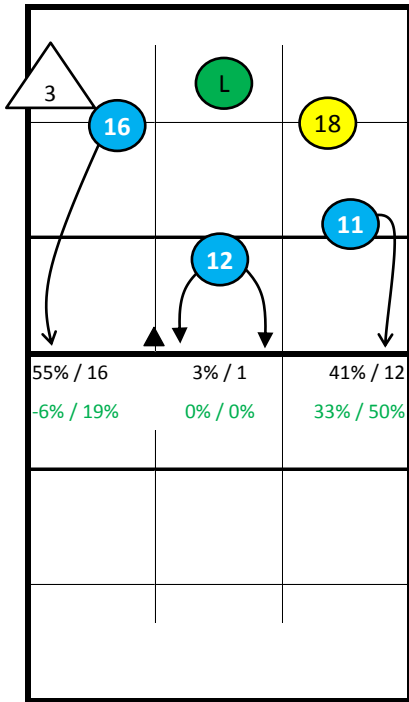
8: Float at Position 1
11: Jumpfloat at Position 6



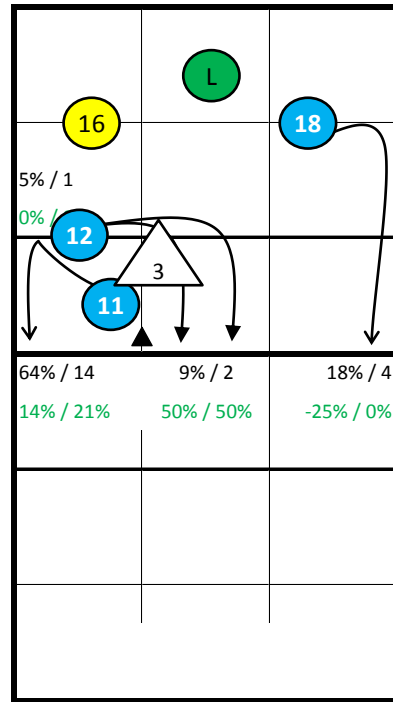
S4

Notes:

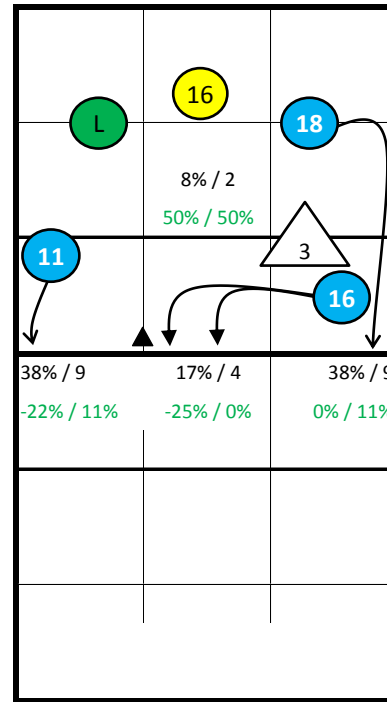
Austria96 -



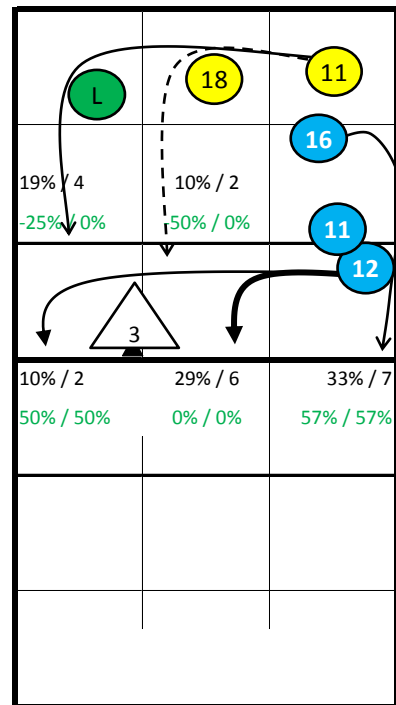
S1



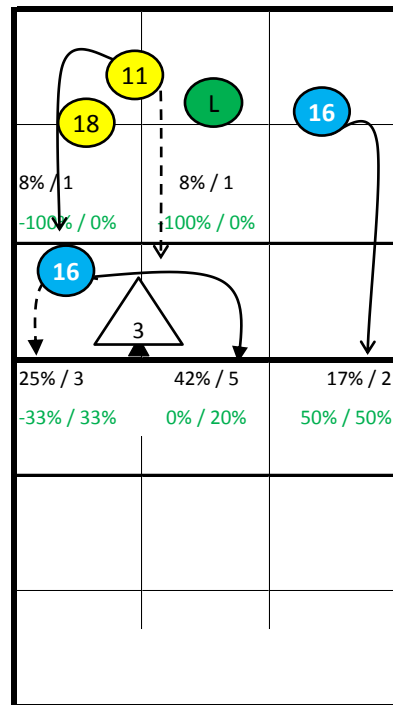
S6



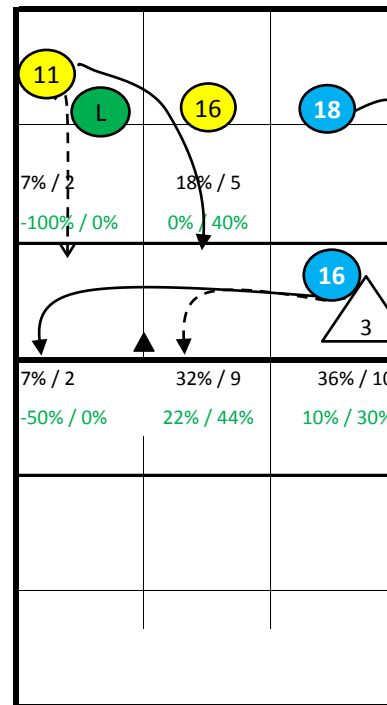
S5



S2



S3



S4

Notes:

Austria96 - all Statistics

pld	Points					Serve								Reception										Attack											
	Set	pts	P/s	easy=	all=	W-L	Σ	=	-	+	#	=%	#%	eff%	Σ	in %	=	/	-	+	#	=/%	+#%	#%	eff%	Σ	in %	=	/	!	+	#	=/%	#%	eff%
Austria96	8	118	14,8	71	144	-26	187	20	56	97	14	11%	7%	59%	174		14	6	68	29	57	11%	50%	33%	38%	281		36	24	19	73	76	21%	27%	6%
2 Berger	8	0			5	-5	0							30	17%	2	0	11	5	12	7%	57%	40%	50%	0										
3 Schmit	8	1	0,1	8	10	-9	32	2	10	20	0	6%	0%	62%	0										5	2%	0	0	0	2	1	0%	20%	20%	
4 Peischl	3	1	0,3	2	4	-3	5	2	2	1	0	40%	0%	20%	0										0										
5 Gesslbauer	2	0			1	-1	2	0	1	1	0	0%	0%	50%	0										0										
6 Oppenauer	8	15	1,9	7	13	2	19	3	8	6	2	16%	11%	42%	1	1%	1	0	0	0	0	100%	0%	0%	-100%	11	4%	2	1	2	1	3	27%	27%	0%
8 Holzer	7	13	1,9	6	13	0	10	3	1	5	1	30%	10%	60%	11	6%	3	0	4	2	2	27%	36%	18%	9%	31	11%	3	3	1	10	6	19%	19%	0%
11 Maros	8	20	2,5	14	26	-6	35	4	11	18	2	11%	6%	57%	0										52	19%	10	3	4	12	14	25%	27%	2%	
12 Nasimovic	8	6	0,8	3	9	-3	27	1	9	14	3	4%	11%	63%	0										6	2%	0	0	0	0	1	0%	17%	17%	
14 Grebien	3	1	0,3			1	4	0	2	1	1	0%	25%	50%	0										0										
16 Markovic	8	38	4,8	19	40	-2	28	3	8	14	3	11%	11%	61%	70	40%	5	3	28	9	25	11%	49%	36%	37%	96	34%	12	11	3	27	31	24%	32%	8%
17 Fink	6	1	0,2	1	2	-1	1	0	1	0	0	0%	0%	0%	14	8%	1	1	8	2	2	14%	28%	14%	14%	6	2%	1	0	0	4	1	17%	17%	0%
18 Radl	8	22	2,8	11	21	1	23	2	3	16	2	9%	9%	78%	48	28%	2	2	17	11	16	8%	56%	33%	48%	74	26%	8	6	9	17	19	19%	26%	7%

pld	Block						Defense						Freeball					Set		
	Set	Σ	=	+	#	#%	eff%	Σ	=	/-!	+#	+#%	eff%	Σ	err	bad	god	eff%	Σ	=
Austria96	79	27	8	28	35%	11%	112	12	41	59	53%	53%	25	4	0	21	68%	60	7	-12%
2 Berger	0						27	3	11	13	48%	48%	1	0	0	1	100%	0		
3 Schmit	4	2	1	0	0%	-25%	15	0	14	1	7%	7%	5	0	0	5	100%	58	6	-10%
4 Peischl	4	2	1	1	25%	0%	0						0					0		
5 Gesslbauer	2	1	0	0	0%	-50%	0						0					0		
6 Oppenauer	17	5	0	10	59%	29%	2	0	2	0	0%	0%	1	1	0	0	-100%	0		
8 Holzer	8	1	0	6	75%	62%	8	0	3	5	63%	62%	1	0	0	1	100%	0		
11 Maros	16	7	3	4	25%	0%	12	2	3	7	58%	58%	3	0	0	3	100%	0		
12 Nasimovic	12	4	1	2	17%	-8%	5	2	0	3	60%	60%	3	1	0	2	33%	1	1	-100%
14 Grebien	0						0						0					1	0	0%
16 Markovic	13	4	2	4	31%	15%	21	4	5	12	57%	57%	6	1	0	5	67%	0		
17 Fink	0						4	0	0	4	100%	100%	0					0		
18 Radl	3	1	0	1	33%	0%	18	1	3	14	78%	78%	5	1	0	4	60%	0		

pld Set played Sets
 P/s Points per Set
 pts Points
 easy= easy errors (serve, net contact, ...)
 all= all errors
 W-L points - errors
 Σ sum of all events
 in % in percent of all team events

Austria96 - Attack-Statistic

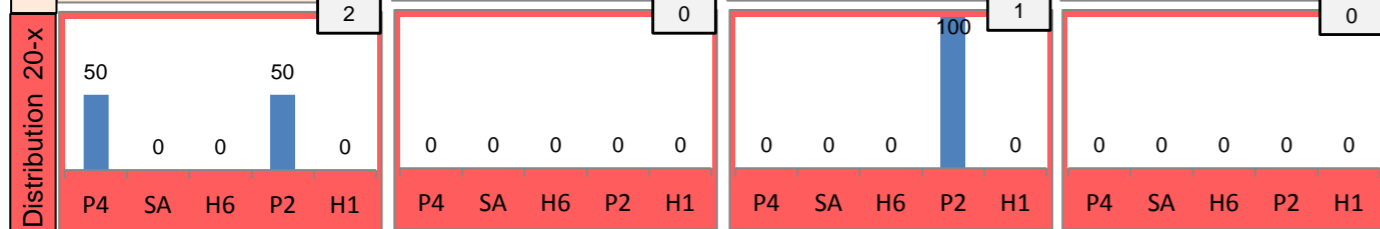
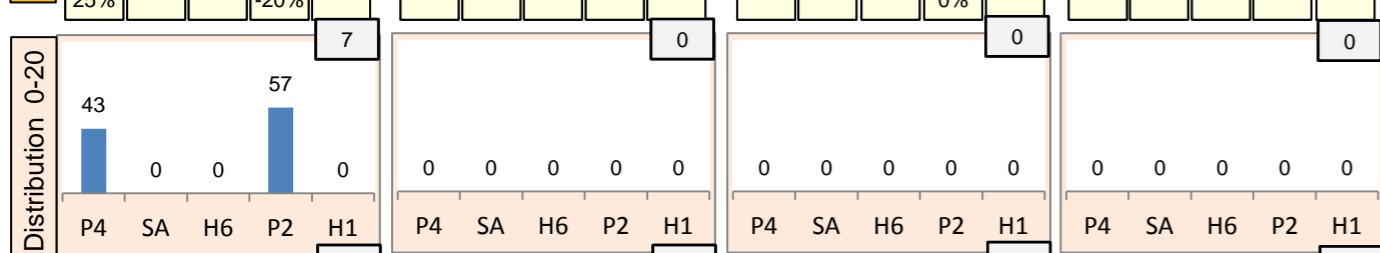
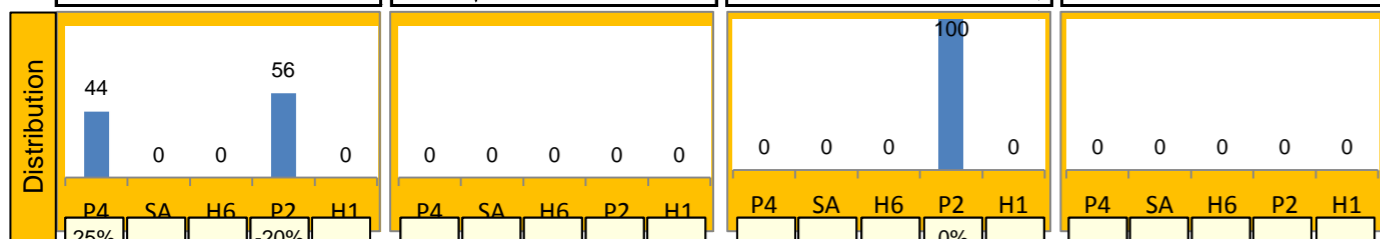
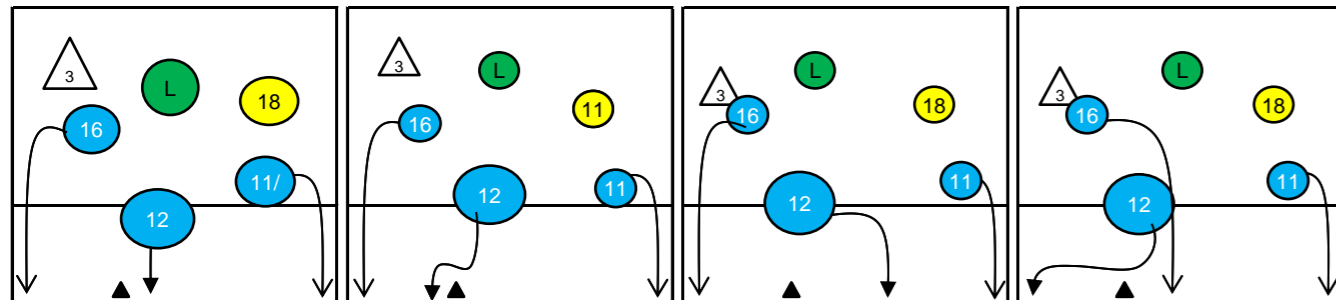
	K1 & K2 Attacks								K1 All Attacks								K2 Attacks								K1 aft R other Ply				K1 after own Rec			
	Σ	in %	=	/	#	=/%	#%	eff	Σ	in %	=	/	#	=/%	#%	eff	Σ	in %	=	/	#	=/%	#%	eff	sum	#	#%	eff	sum	#	#%	eff
Austria96	270		36	24	74	22%	27%	5%	130		17	14	35	24%	27%	3%	140		19	10	39	21%	28%	7%	112	32	29%		18	3	17%	
16 Markovic	96	36%	12	11	31	24%	32%	8%	40	31%	6	7	12	33%	30%	-3%	56	40%	6	4	19	18%	34%	16%	29	9	31%	3%	11	3	27%	-18%
18 Radl	70	26%	8	6	18	20%	26%	6%	33	25%	2	3	8	15%	24%	9%	37	26%	6	3	10	24%	27%	3%	30	8	27%	13%	3	0	0%	-33%
11 Maros	52	19%	10	3	14	25%	27%	2%	24	18%	4	2	8	25%	33%	8%	28	20%	6	1	6	25%	21%	-4%	24	8	33%	8%	0			
8 Holzer	30	11%	3	3	6	20%	20%	0%	17	13%	2	2	4	24%	24%	0%	13	9%	1	1	2	15%	15%	0%	15	4	27%	0%	2	0	0%	0%
6 Oppenauer	11	4%	2	1	3	27%	27%	0%	8	6%	2	0	3	25%	38%	12%	3	2%	0	1	0	33%	0%	-33%	8	3	38%	12%	0			
17 Fink	6	2%	1	0	1	17%	17%	0%	4	3%	1	0	0	25%	0%	-25%	2	1%	0	0	1	0%	50%	50%	2	0	0%	-50%	2	0	0%	0%
12 Nasimovic	5	2%	0	0	1	0%	20%	20%	4	3%	0	0	0	0%	0%	0%	1	1%	0	0	1	0%	100%	100%	4	0	0%	0%	0			
2 Berger	0								0								0								0				0			
3 Schmit	0								0								0								0				0			
4 Peischl	0								0								0								0				0			
5 Gesslbauer	0								0								0								0				0			
14 Grebien	0								0								0								0				0			

	K1 after R#+								K1 after R-!								Freeball-Attacks							
	Σ	in %	=	/	#	=/%	#%	eff	Σ	in %	=	/	#	=/%	#%	eff	Σ	in %	=	/	#	=/%	#%	eff
Austria96	82		10	9	24	23%	29%	6%	48		7	5	11	25%	23%	-2%	0		0	0	0			0%
16 Markovic	26	32%	3	4	7	27%	27%	0%	14	29%	3	3	5	43%	36%	-7%	0							
18 Radl	14	17%	0	1	5	7%	36%	29%	19	40%	2	2	3	21%	16%	-5%	0							
11 Maros	15	18%	3	2	5	33%	33%	0%	9	19%	1	0	3	11%	33%	22%	0							
8 Holzer	11	13%	1	2	4	27%	36%	9%	6	12%	1	0	0	17%	0%	-17%	0							
6 Oppenauer	8	10%	2	0	3	25%	38%	12%	0								0							
17 Fink	4	5%	1	0	0	25%	0%	-25%	0								0							
12 Nasimovic	4	5%	0	0	0	0%	0%	0%	0								0							
2 Berger	0								0								0							
3 Schmit	0								0								0							
4 Peischl	0								0								0							
5 Gesslbauer	0								0								0							
14 Grebien	0								0								0							

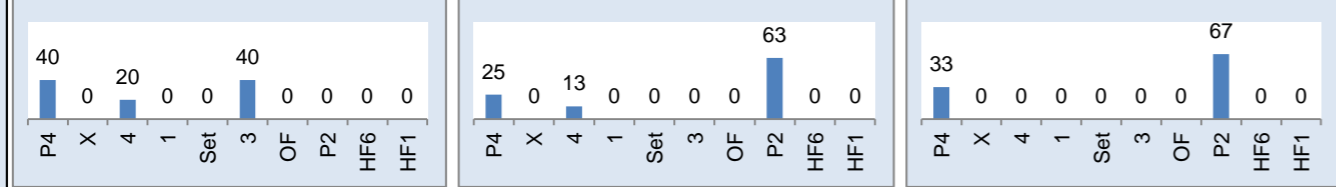
Rotation 1

Austria96

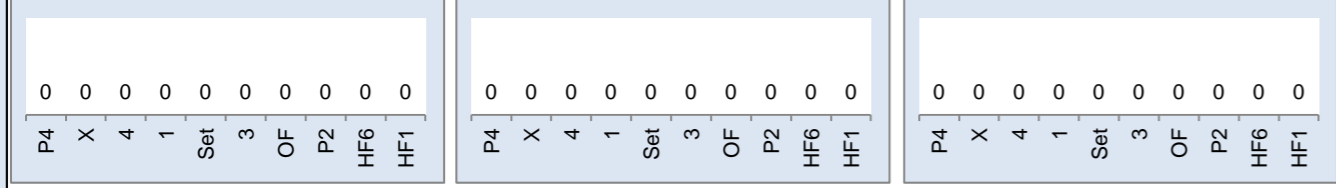
Base K1 90% (9) Base K2 0% (0) Base K7 10% (1) Base KD 0% (0)



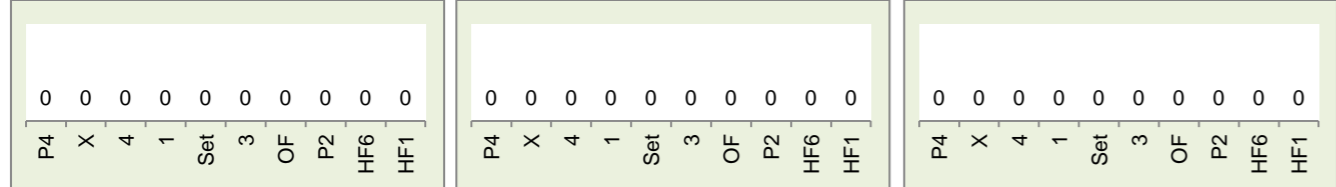
Rec in Pos 1 31% (5) Rec in Pos 6 50% (8) Rec in Pos 5 19% (3)



Rec in Pos 2 0% (0) Rec in Pos 3 0% (0) Rec in Pos 4 0% (0)



Settermovement to 4 0 Settermovement to 3 0 Settermovement to 2 0



Distribution

K1 after all R 28 7% 29% K1 after R#+ 16 0% 25% K2 Transition 29 14% 34%

Player	0	1	4%	0	-	0	-	0	-	0	-	
16 Markovic	16	57%	3	11%	8	29%	9	56%	2	13%	5	31%
18 Radl	0%	25%	33%	33%	12%	38%	-22%	11%	50%	50%	20%	40%
2 Berger	0	-	0	0%	0	-	0	-	0	-	0	-
6 Oppenauer	0	-	0	-	0	-	0	-	0	-	0	-
3 Schmit	16	55%	1	3%	12	41%	16	55%	1	3%	12	41%
4 Peischl	-6%	19%	100%	100%	33%	50%	-6%	19%	100%	100%	33%	50%

Reception

Player	Σ	Σ %	=/	=/ %	+	+ %	#	# %	+ # %	Eff
Austria96	32	100%	3	9%	9	28%	7	22%	50%	41%
16 Markovic	12	38%	1	8%	4	33%	1	8%	42%	33%
18 Radl	12	38%	1	8%	3	25%	2	17%	42%	33%
2 Berger	7	22%	0	0%	2	29%	4	57%	86%	86%
6 Oppenauer	1	3%	1	100%	0	0%	0	0%	0%	-100%
3 Schmit	0	0%	0	-	0	-	0	-	-	-
4 Peischl	0	0%	0	-	0	-	0	-	-	-

K1-Attacks after R#+

Player	Σ	Σ %	=	= %	#	# %	Eff
Austria96	16	100%	1	6%	4	25%	0%
16 Markovic	8	50%	1	13%	1	13%	-25%
11 Maros	5	31%	0	0%	2	40%	20%
18 Radl	2	13%	0	0%	1	50%	50%
8 Holzer	1	6%	0	0%	0	0%	0%
2 Berger	0	0%	0	-	0	-	-
3 Schmit	0	0%	0	-	0	-	-
4 Peischl	0	0%	0	-	0	-	-

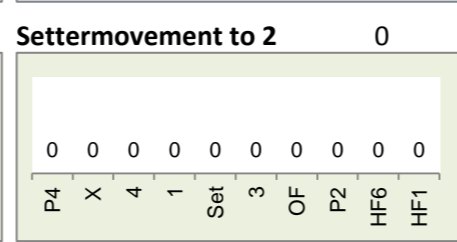
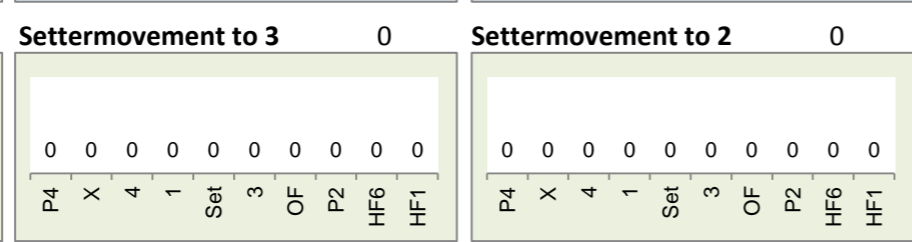
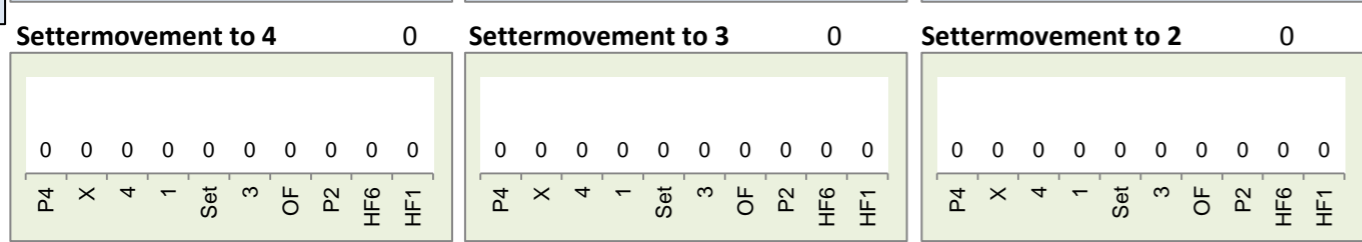
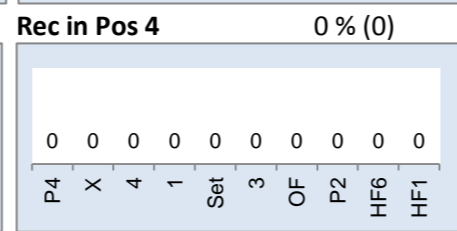
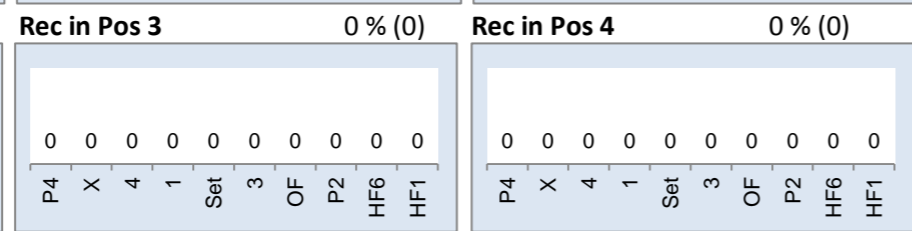
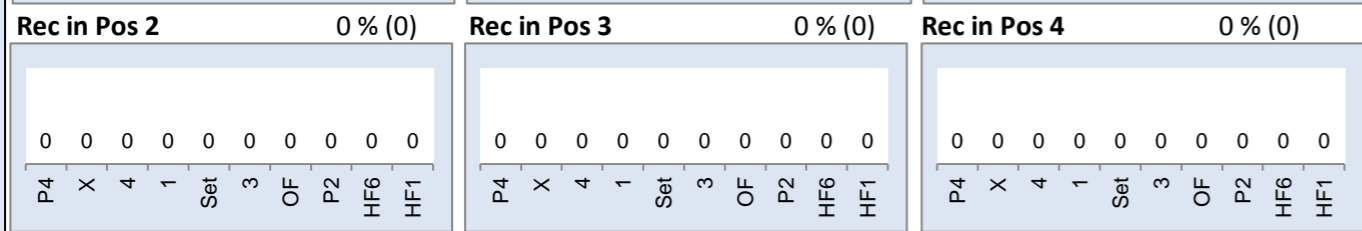
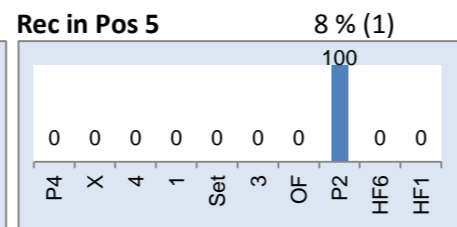
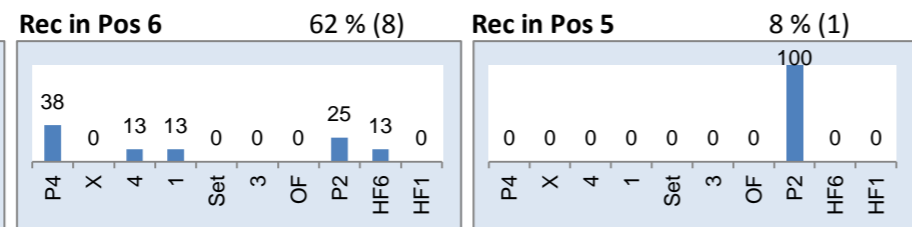
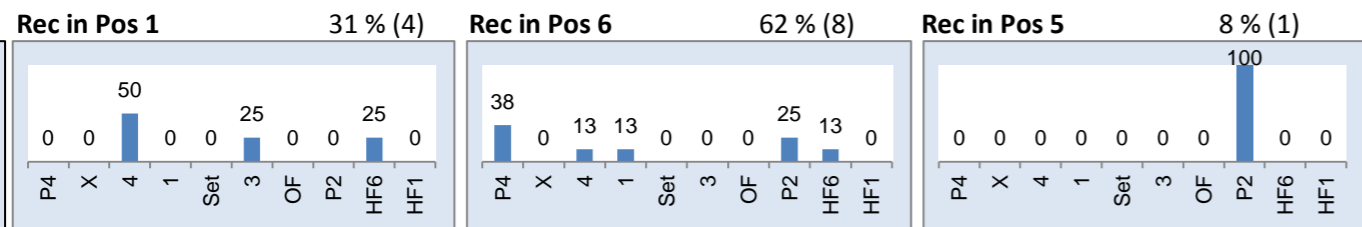
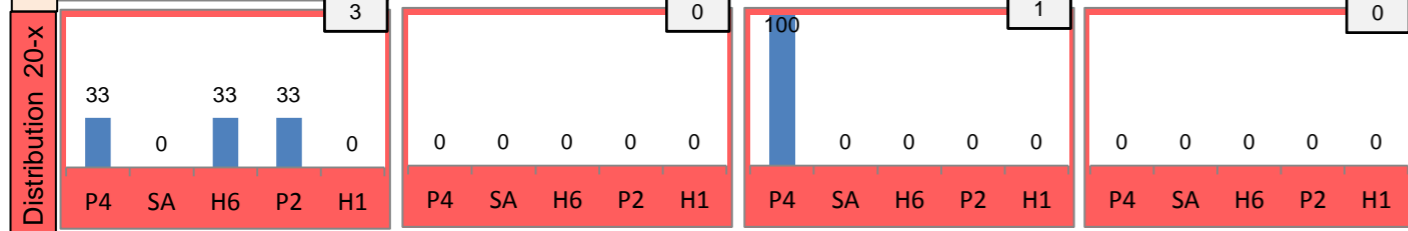
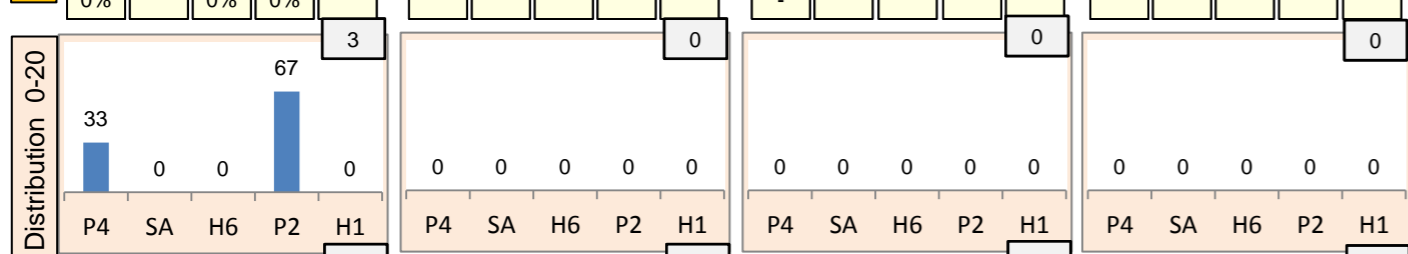
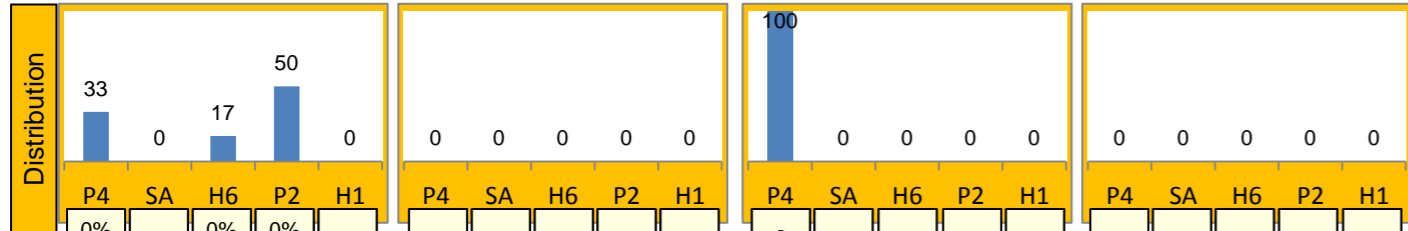
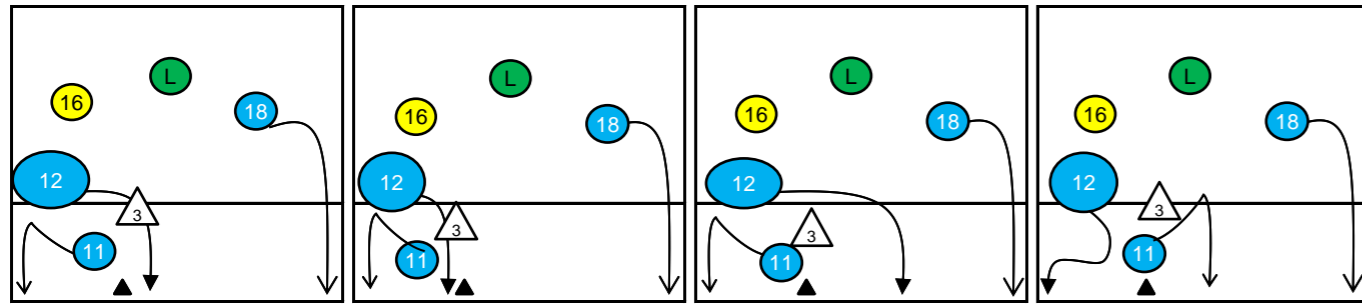
K2-Attacks - Transition

Player	Σ	Σ %	=	= %	#	# %	Eff
Austria96	29	100%	4	14%	10	34%	14%
16 Markovic	21	72%	3	14%	7	33%	10%
8 Holzer	3	10%	1	33%	0	0%	-33%
11 Maros	3	10%	0	0%	1	33%	33%
12 Nasimovic	1	3%	0	0%	1	100%	100%
18 Radl	1	3%	0	0%	1	100%	100%
2 Berger	0	0%	0	-	0	-	-
3 Schmit	0	0%	0	-	0	-	-

Rotation 6

Austria96

Base K1 86 % (6) Base K2 0 % (0) Base K7 14 % (1) Base KD 0 % (0)



Distribution

K1 after all R 19 0% 26% K1 after R#+ 13 23% 38% K2 Transition 28 21% 29%

Category	0	1	2	3	4	5	6	7	8
K1 after all R	0	0	2	0	4	7	4	0	0
K1 after R#+	0	0	2	0	4	3	4	0	0
K2 Transition	1	0	2	0	1	8	1	0	0

Reception	Σ	Σ %	=/	=/ %	+	+ %	#	# %	+ # %	Eff
Austria96	28	100%	5	18%	3	11%	11	39%	50%	32%
2 Berger	12	43%	2	17%	2	17%	5	42%	58%	42%
16 Markovic	8	29%	1	13%	0	0%	5	63%	63%	50%
18 Radl	4	14%	1	25%	1	25%	1	25%	50%	25%
17 Fink	3	11%	0	0%	0	0%	0	0%	0%	0%
8 Holzer	1	4%	1	100%	0	0%	0	0%	0%	-100%
3 Schmit	0	0%	0	-	0	-	0	-	-	-

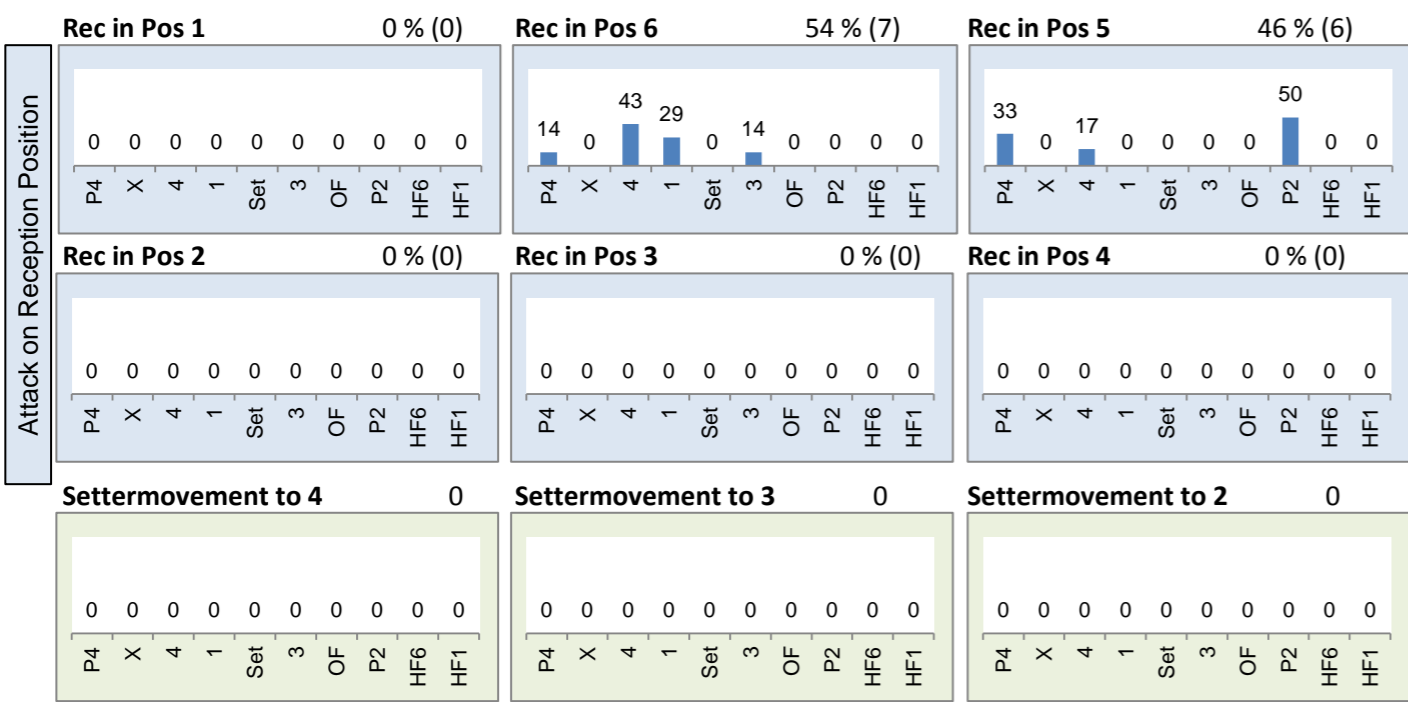
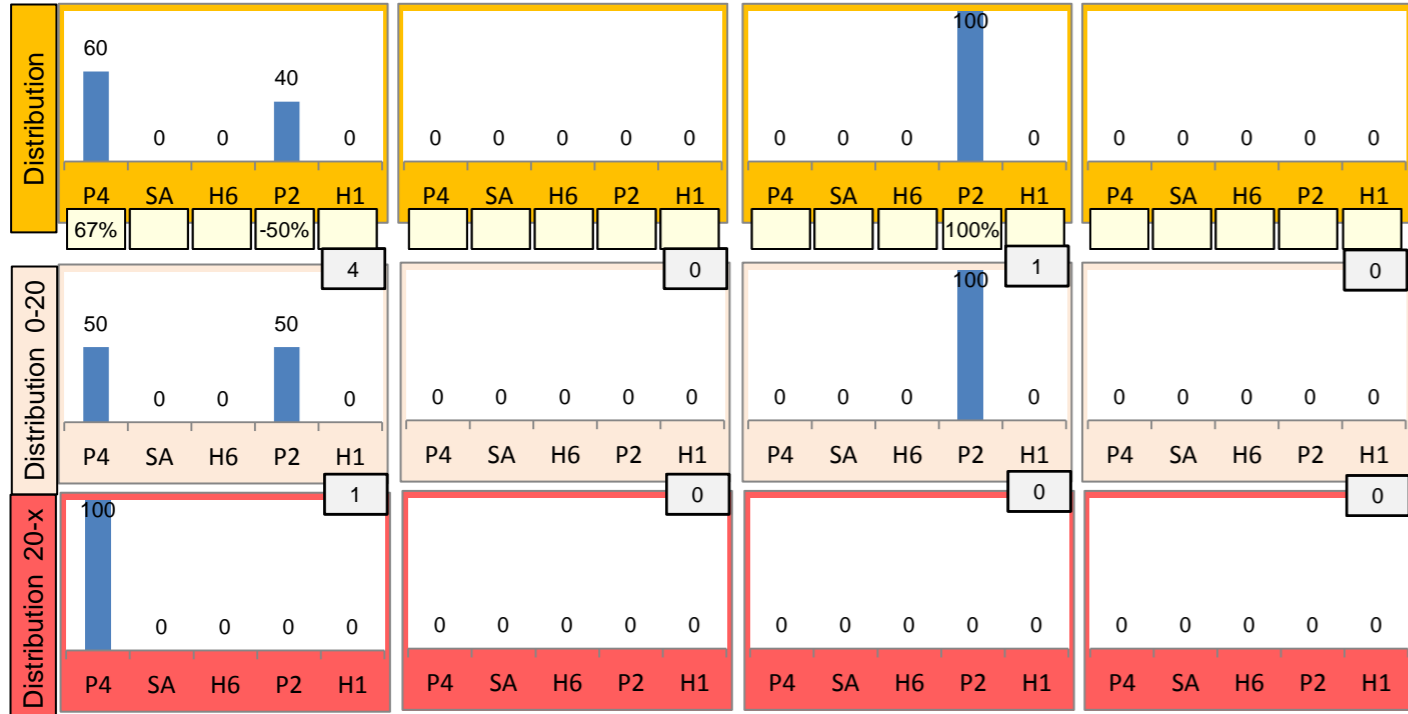
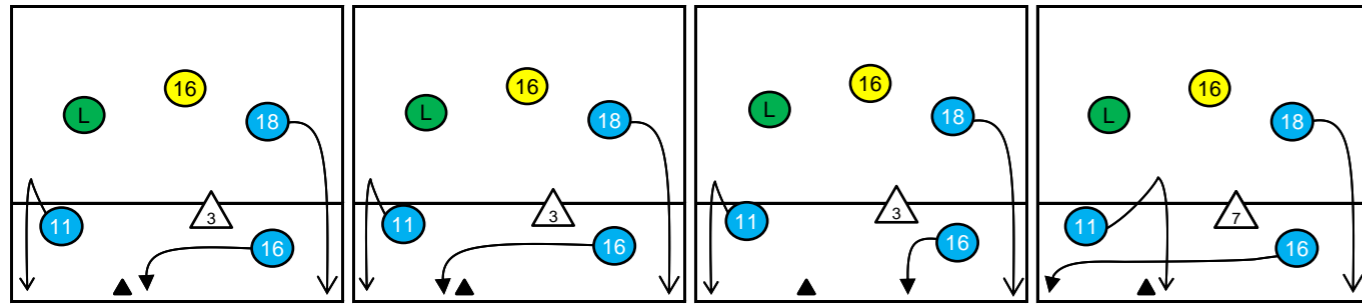
K1-Attacks after R#+	Σ	Σ %	=	= %	#	# %	Eff
Austria96	13	100%	0	0%	5	38%	23%
8 Holzer	4	31%	0	0%	3	75%	75%
18 Radl	4	31%	0	0%	0	0%	-25%
11 Maros	2	15%	0	0%	1	50%	0%
16 Markovic	2	15%	0	0%	1	50%	50%
12 Nasimovic	1	8%	0	0%	0	0%	0%
2 Berger	0	0%	0	-	0	-	-
3 Schmit	0	0%	0	-	0	-	-

K2-Attacks - Transitor	Σ	Σ %	=	= %	#	# %	Eff
Austria96	28	100%	1	4%	8	29%	21%
11 Maros	12	43%	0	0%	4	33%	33%
18 Radl	7	25%	1	14%	1	14%	-14%
16 Markovic	6	21%	0	0%	2	33%	33%
8 Holzer	2	7%	0	0%	0	0%	0%
17 Fink	1	4%	0	0%	1	100%	100%
2 Berger	0	0%	0	-	0	-	-
3 Schmit	0	0%	0	-	0	-	-

Rotation 5

Austria96

Base K1 83% (5) Base K2 0% (0) Base K7 17% (1) Base KD 0% (0)



Distribution

K1 after all R 21 19% 33% K1 after R#+ 13 46% 54% K2 Transition 24 -4% 17%

Player	Count	%	Count	%	Count	%	
0	-	2	10%	0	-	0	-
-	-	-50%	0%	-	-	-	-
7	33%	6	29%	6	29%	4	31%
14%	29%	50%	50%	17%	33%	25%	50%
0	-	0	-	0	-	0	-
-	-	-	-	-	-	-	-
9	38%	3	13%	10	42%	9	38%
-22%	11%	-33%	0%	10%	20%	-22%	11%

Reception	Σ	Σ %	=	= %	+	+ %	#	# %	+ # %	Eff
Austria96	27	100%	2	7%	4	15%	9	33%	48%	41%
16 Markovic	18	67%	1	6%	2	11%	8	44%	56%	50%
8 Holzer	4	15%	1	25%	1	25%	0	0%	25%	0%
2 Berger	2	7%	0	0%	0	0%	0	0%	0%	0%
18 Radl	2	7%	0	0%	0	0%	1	50%	50%	50%
17 Fink	1	4%	0	0%	1	100%	0	0%	100%	100%
3 Schmit	0	0%	0	-	0	-	0	-	-	-

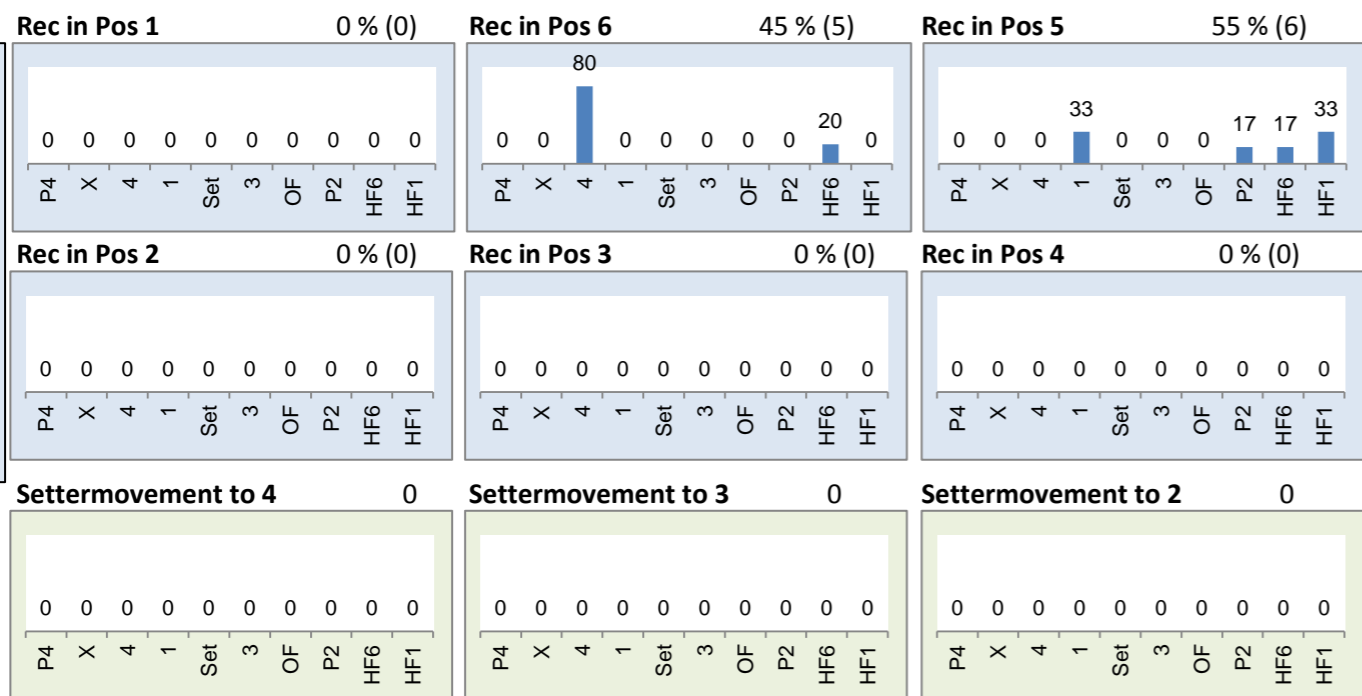
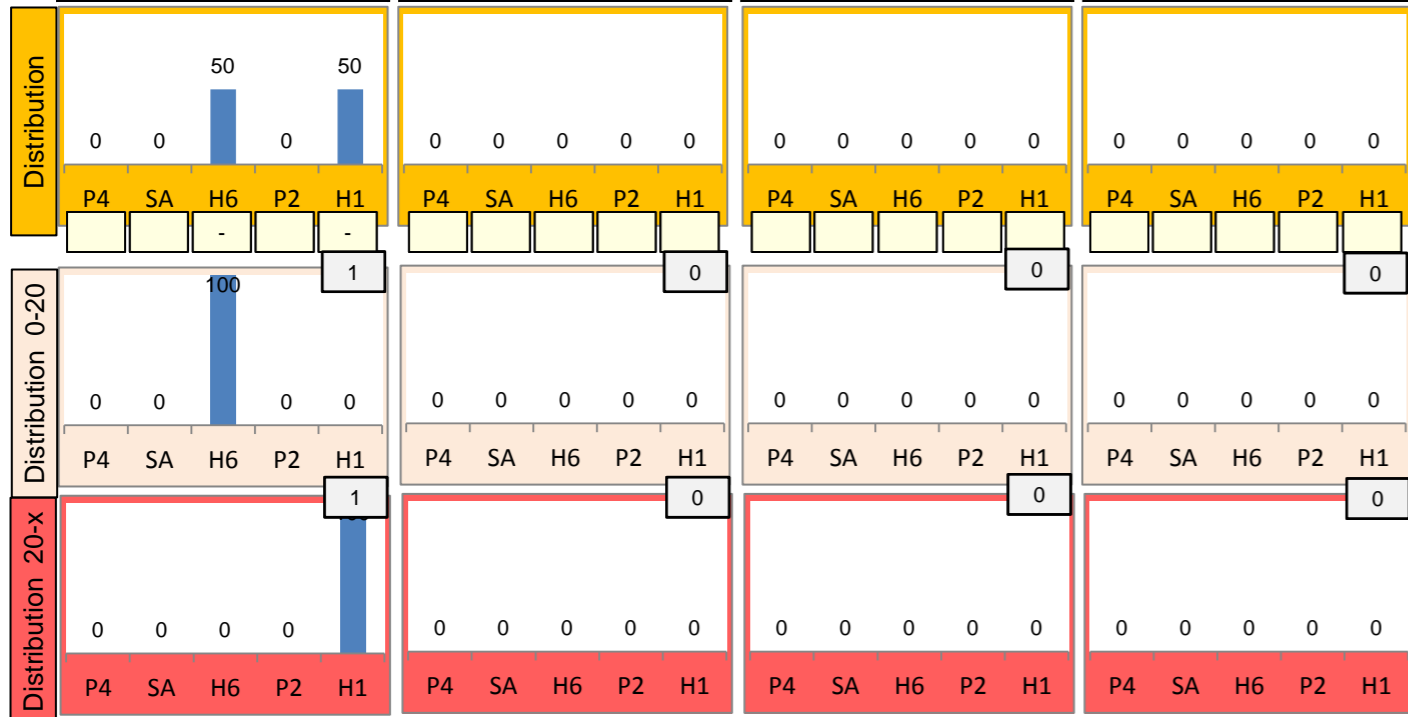
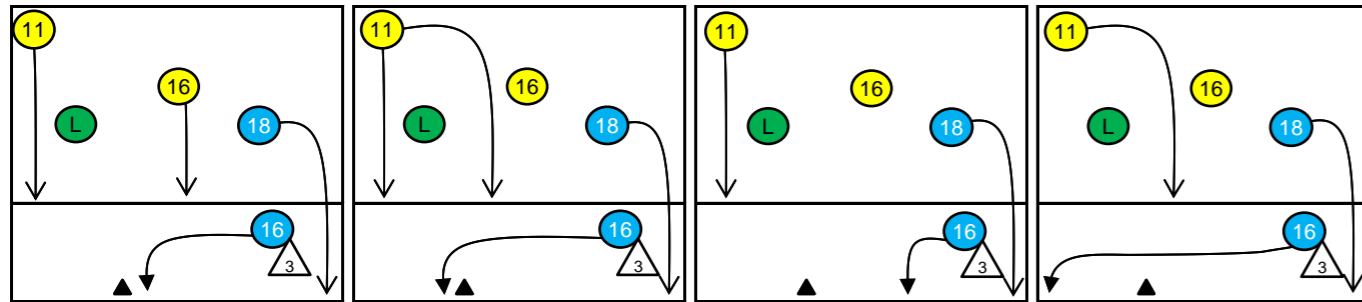
K1-Attacks after R#+	Σ	Σ %	=	= %	#	# %	Eff
Austria96	13	100%	0	0%	7	54%	46%
18 Radl	5	38%	0	0%	3	60%	60%
8 Holzer	4	31%	0	0%	1	25%	0%
6 Oppenauer	2	15%	0	0%	1	50%	50%
11 Maros	2	15%	0	0%	2	100%	100%
2 Berger	0	0%	0	-	0	-	-
3 Schmit	0	0%	0	-	0	-	-
4 Peischl	0	0%	0	-	0	-	-

K2-Attacks - Transition	Σ	Σ %	=	= %	#	# %	Eff
Austria96	24	100%	4	17%	4	17%	-4%
18 Radl	11	46%	2	18%	2	18%	0%
11 Maros	5	21%	2	40%	1	20%	-40%
16 Markovic	4	17%	0	0%	1	25%	25%
8 Holzer	3	13%	0	0%	0	0%	0%
6 Oppenauer	1	4%	0	0%	0	0%	0%
2 Berger	0	0%	0	-	0	-	-
3 Schmit	0	0%	0	-	0	-	-

Rotation 4

Austria96

Base K1 100% (2) Base K2 0% (0) Base K7 0% (0) Base KD 0% (0)



Distribution

K1 after all R 21 -14% 24% K1 after R#+ 11 -36% 18% K2 Transition 28 0% 32%

Player	3	14%	3	14%	0	-	2	18%	2	18%	0	-	2	7%	5	18%	0	-
3	14%	3	14%	0	-	2	18%	2	18%	0	-	2	7%	5	18%	0	-	
16 Markovic	-67%	0%	-67%	0%	-	-	-100%	0%	-50%	0%	-	-	-100%	0%	0%	40%	-	-
17 Fink	2	10%	6	29%	7	33%	1	9%	6	55%	0	-	2	7%	7	25%	12	43%
8 Holzer	-50%	0%	0%	33%	29%	43%	-100%	0%	0%	33%	-	-	-50%	0%	14%	43%	17%	33%

Reception	Σ	Σ %	=	= %	+	+ %	#	# %	+ # %	Eff
Austria96	39	100%	8	21%	3	8%	8	21%	28%	8%
16 Markovic	22	56%	5	23%	1	5%	4	18%	23%	0%
17 Fink	6	15%	2	33%	0	0%	1	17%	17%	-17%
8 Holzer	5	13%	1	20%	1	20%	2	40%	60%	40%
18 Radl	5	13%	0	0%	1	20%	1	20%	40%	40%
2 Berger	1	3%	0	0%	0	0%	0	0%	0%	0%
3 Schmit	0	0%	0	-	0	-	0	-	-	-

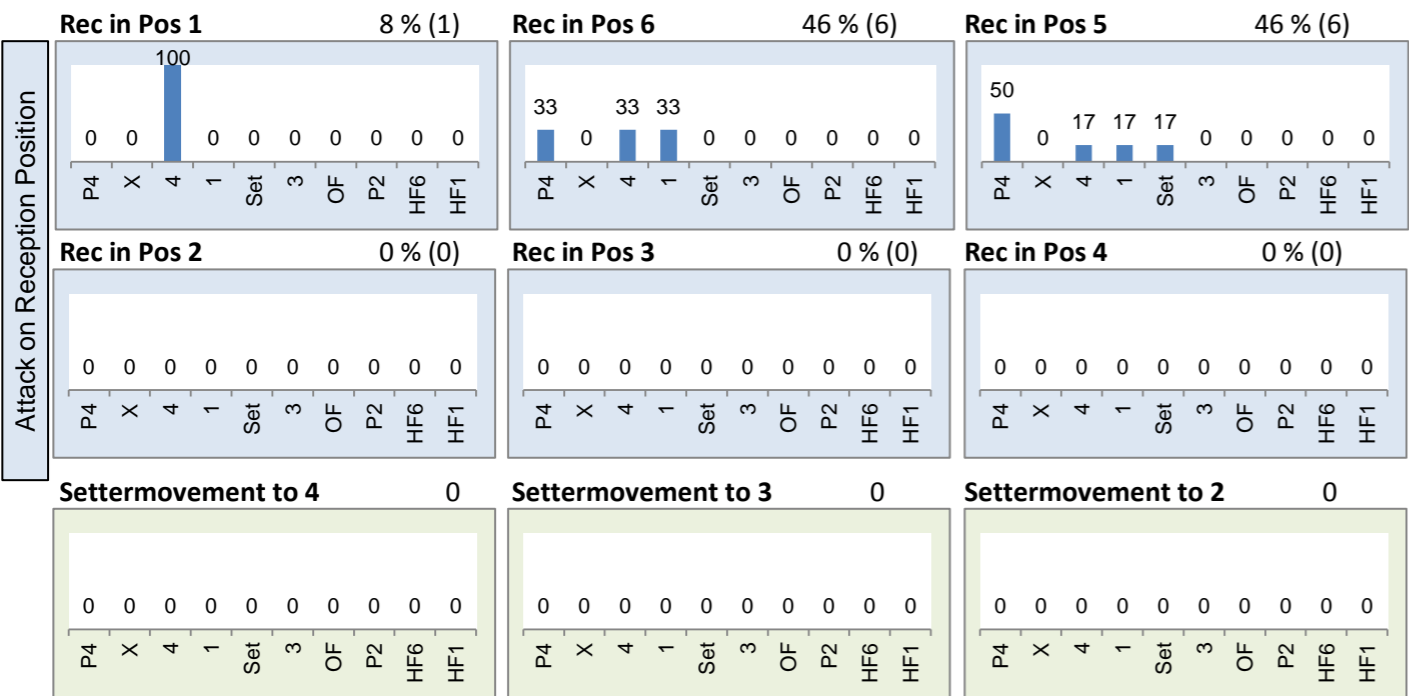
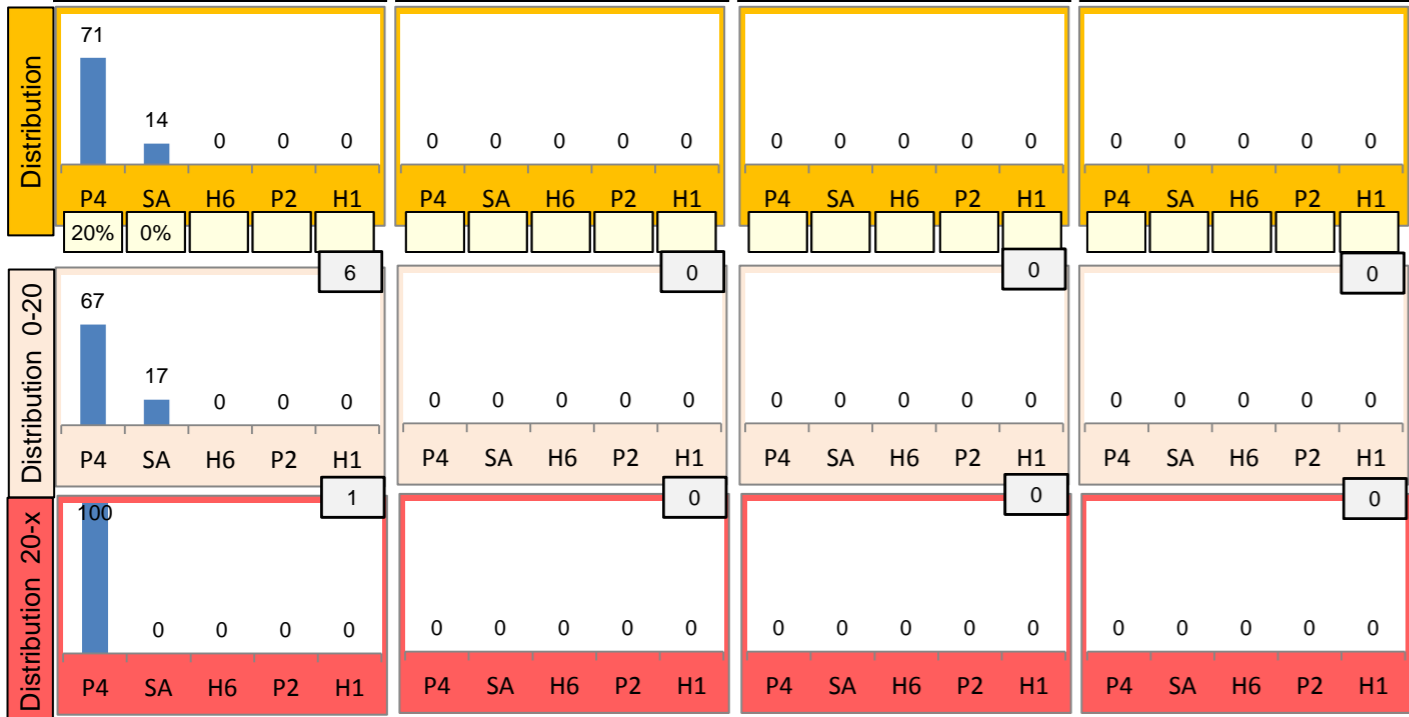
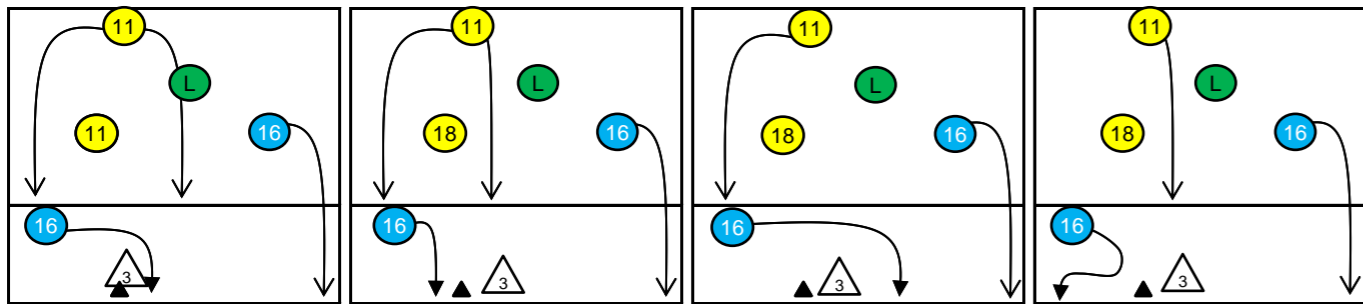
K1-Attacks after R#+	Σ	Σ %	=	= %	#	# %	Eff
Austria96	11	100%	5	45%	2	18%	-36%
16 Markovic	3	27%	2	67%	0	0%	-67%
18 Radl	3	27%	0	0%	1	33%	33%
6 Oppenauer	2	18%	1	50%	1	50%	0%
8 Holzer	2	18%	1	50%	0	0%	-100%
11 Maros	1	9%	1	100%	0	0%	-100%
2 Berger	0	0%	0	-	0	-	-
3 Schmit	0	0%	0	-	0	-	-

K2-Attacks - Transitor	Σ	Σ %	=	= %	#	# %	Eff
Austria96	28	100%	6	21%	9	32%	0%
18 Radl	14	50%	1	7%	5	36%	14%
16 Markovic	6	21%	3	50%	2	33%	-17%
8 Holzer	3	11%	0	0%	2	67%	67%
11 Maros	3	11%	2	67%	0	0%	-67%
6 Oppenauer	2	7%	0	0%	0	0%	-50%
2 Berger	0	0%	0	-	0	-	-
3 Schmit	0	0%	0	-	0	-	-

Rotation 3

Austria96

Base K1 100% (7) Base K2 0% (0) Base K7 0% (0) Base KD 0% (0)



Distribution

K1 after all R 16 6% 25% K1 after R#+ 12 8% 25% K2 Transition 12 -17% 25%

Category	0	-	0	-	0	-
Count	0	-	0	-	0	-
%						

Category	0	-	0	-	0	-
Count	0	-	0	-	0	-
%						

Category	1	8%	1	8%	0	-
Count	1	8%	1	8%	0	-
%						

Category	2	13%	7	44%	7	44%
Count	2	13%	7	44%	7	44%
%						

Category	0	-	7	58%	5	42%
Count	0	-	7	58%	5	42%
%						

Category	3	25%	5	42%	2	17%
Count	3	25%	5	42%	2	17%
%						

Reception	Σ	Σ %	=	= %	+	+ %	#	# %	+ # %	Eff
Austria96	18	100%	0	0%	4	22%	9	50%	72%	72%
2 Berger	7	39%	0	0%	1	14%	3	43%	57%	57%
16 Markovic	6	33%	0	0%	1	17%	4	67%	83%	83%
18 Radl	3	17%	0	0%	1	33%	2	67%	100%	100%
8 Holzer	1	6%	0	0%	0	0%	0	0%	0%	0%
17 Fink	1	6%	0	0%	1	100%	0	0%	100%	100%
3 Schmit	0	0%	0	-	0	-	0	-	-	-

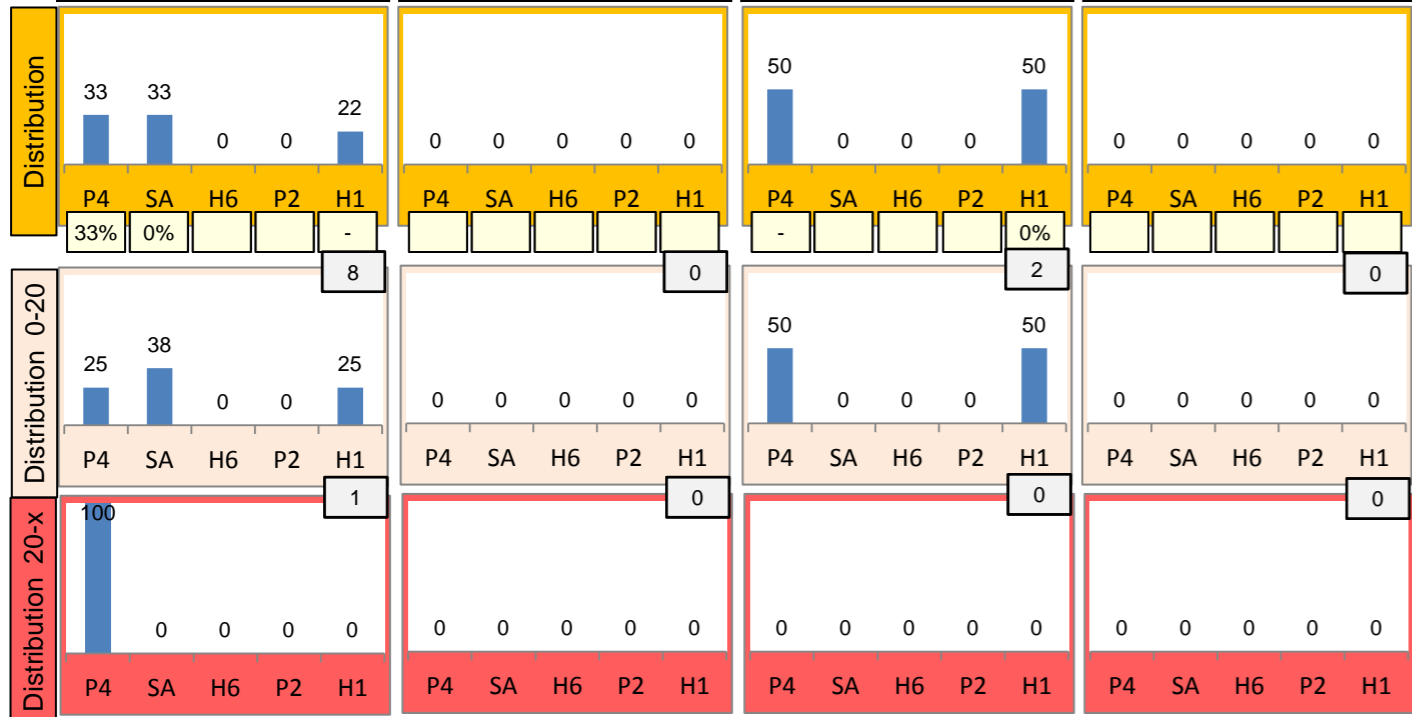
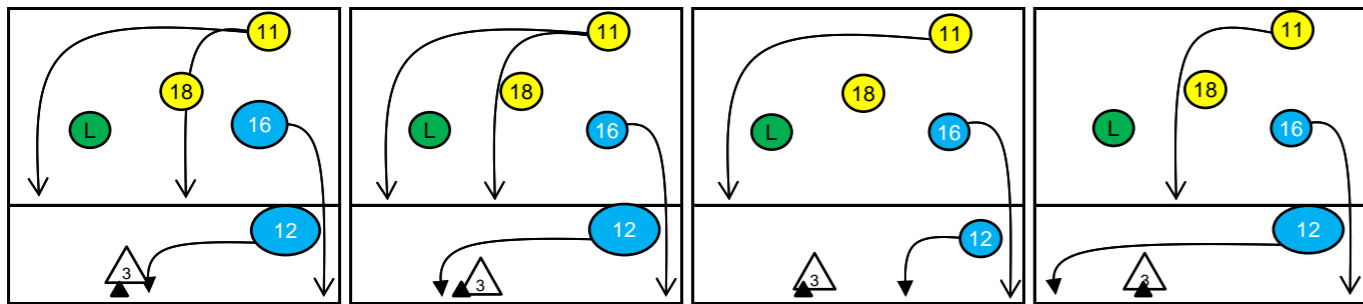
K1-Attacks after R#+	Σ	Σ %	=	= %	#	# %	Eff
Austria96	12	100%	1	8%	3	25%	8%
16 Markovic	6	50%	0	0%	2	33%	17%
6 Oppenauer	4	33%	1	25%	1	25%	0%
17 Fink	2	17%	0	0%	0	0%	0%
2 Berger	0	0%	0	-	0	-	-
3 Schmit	0	0%	0	-	0	-	-
4 Peischl	0	0%	0	-	0	-	-
5 Gesslbauer	0	0%	0	-	0	-	-

K2-Attacks - Transition	Σ	Σ %	=	= %	#	# %	Eff
Austria96	12	100%	2	17%	3	25%	-17%
16 Markovic	8	67%	0	0%	3	38%	12%
8 Holzer	1	8%	0	0%	0	0%	-100%
11 Maros	1	8%	1	100%	0	0%	-100%
17 Fink	1	8%	0	0%	0	0%	0%
18 Radl	1	8%	1	100%	0	0%	-100%
2 Berger	0	0%	0	-	0	-	-
3 Schmit	0	0%	0	-	0	-	-

Rotation 2

Austria96

Base K1 82% (9) Base K2 0% (0) Base K7 18% (2) Base KD 0% (0)



Distribution

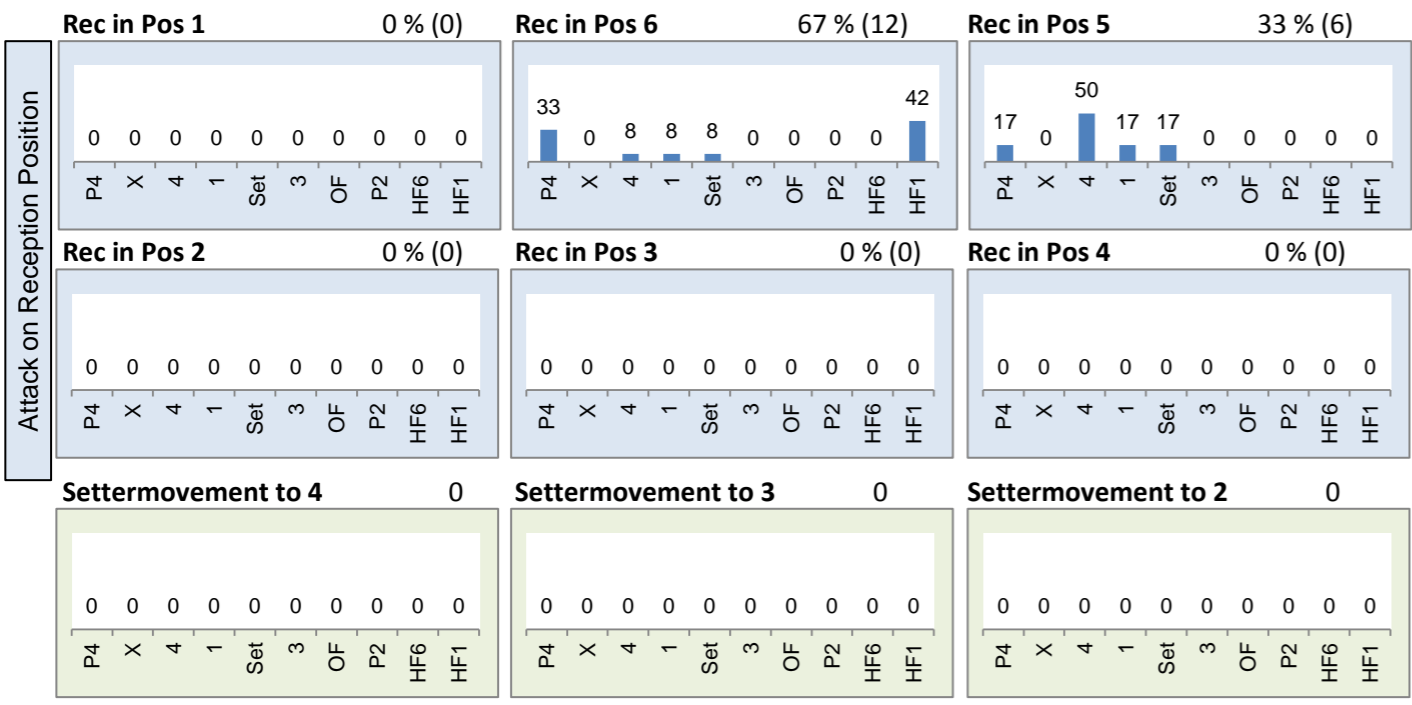
K1 after all R 25 0% 24% K1 after R#+ 17 -6% 18% K2 Transition 19 16% 26%

6	24%	1	4%	0	-	5	29%	0	-	0	-	4	21%	2	11%	0	-
-17%	17%	0%	0%	-	-	-40%	0%	-	-	-	-	-25%	0%	-50%	0%	-	-
0	-	8	32%	10	40%	0	-	7	41%	5	29%	2	11%	4	21%	7	37%
-	-	12%	25%	0%	30%	-	-	14%	29%	0%	20%	50%	50%	0%	0%	57%	57%

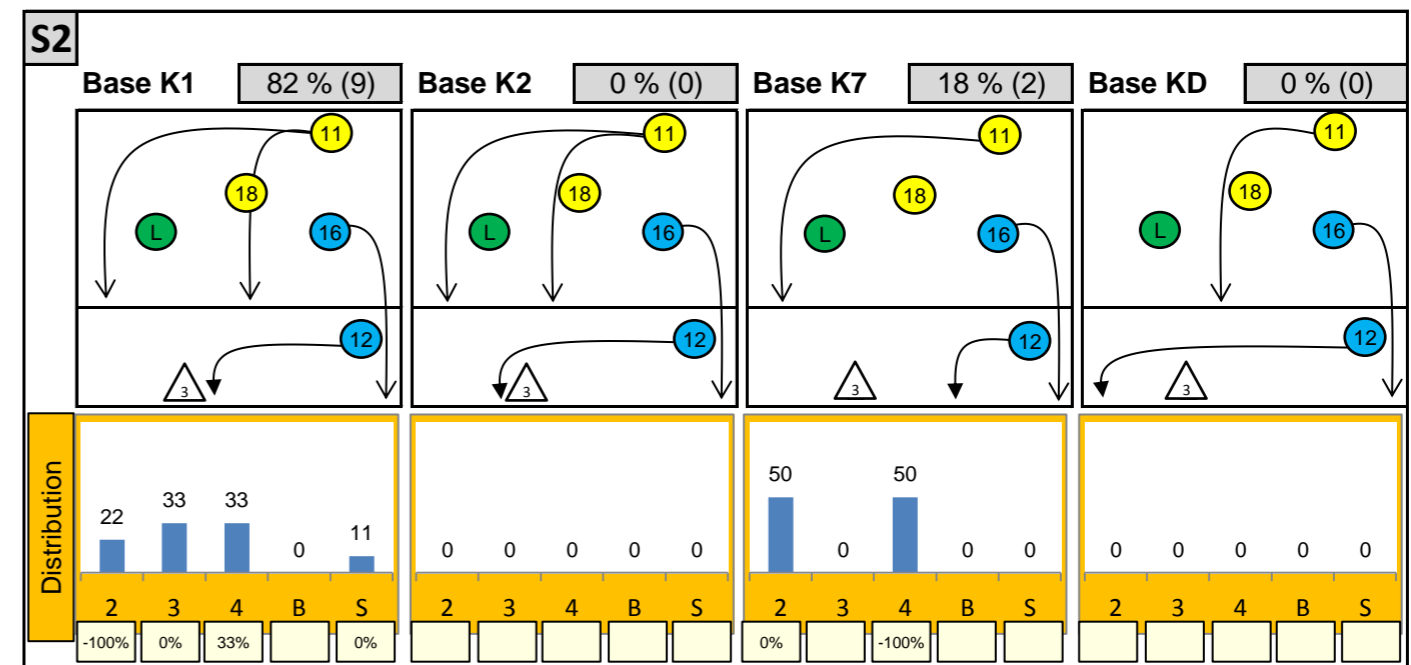
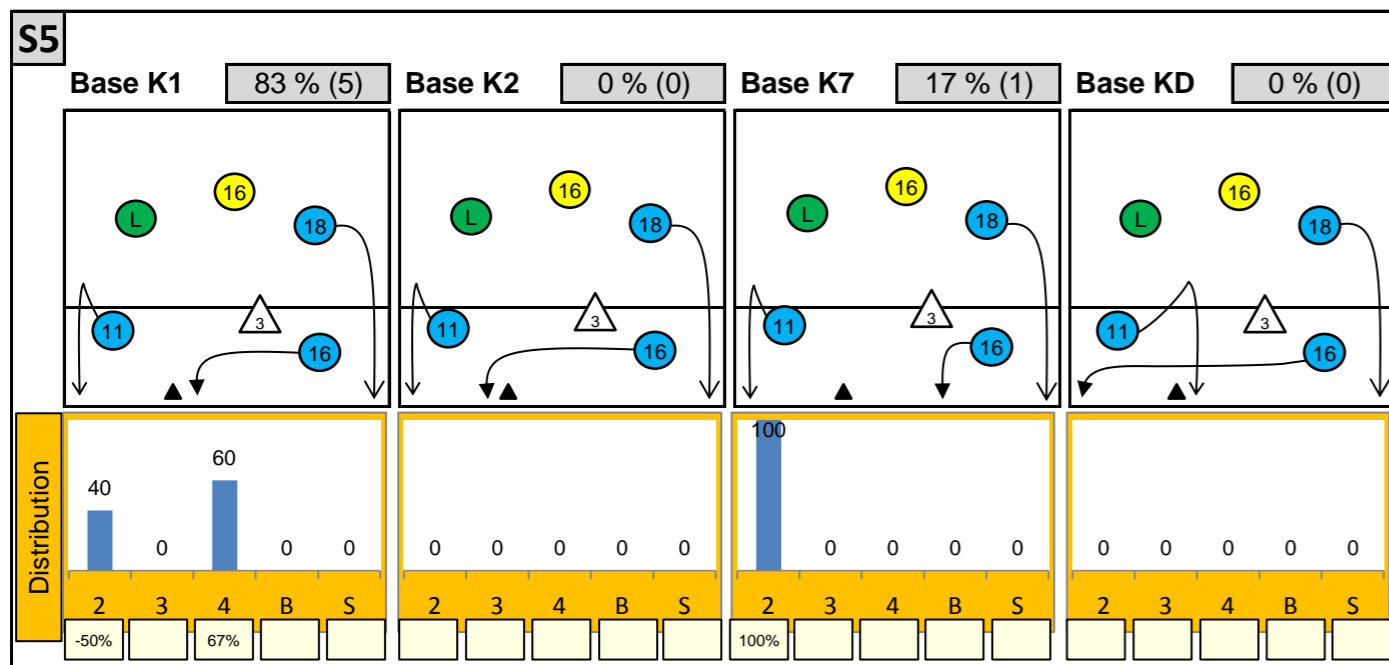
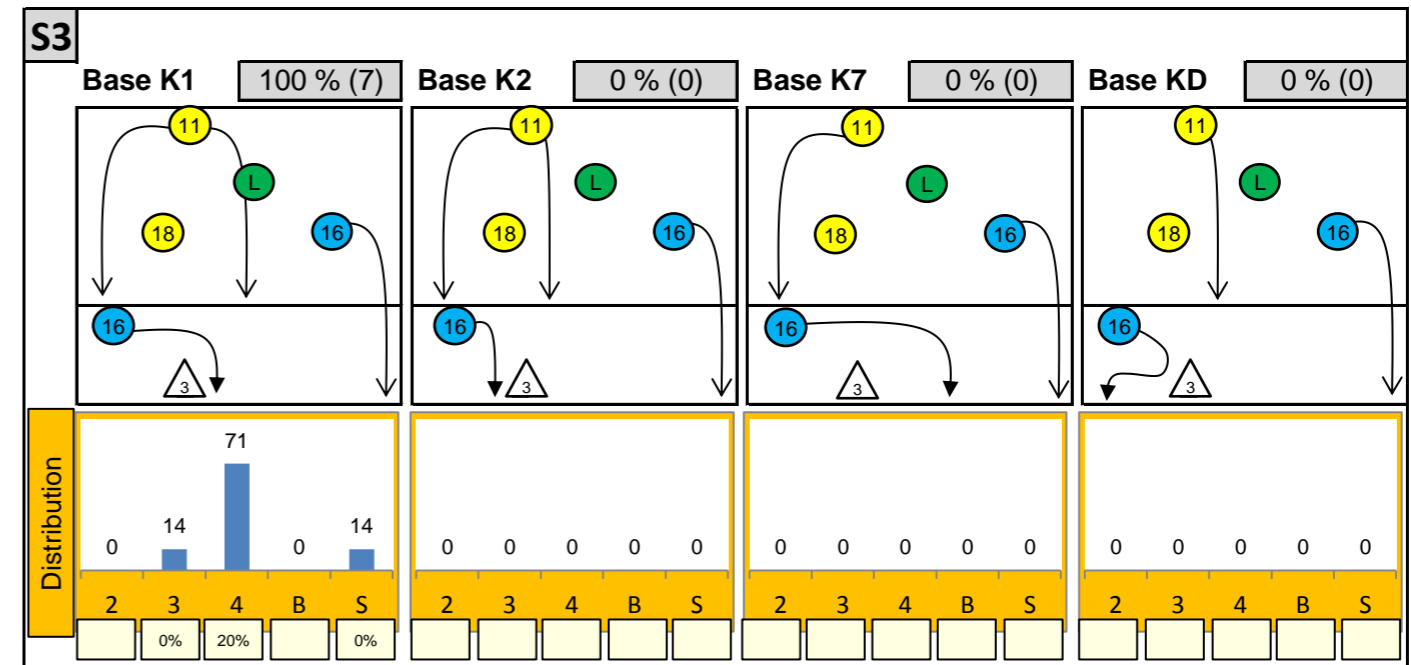
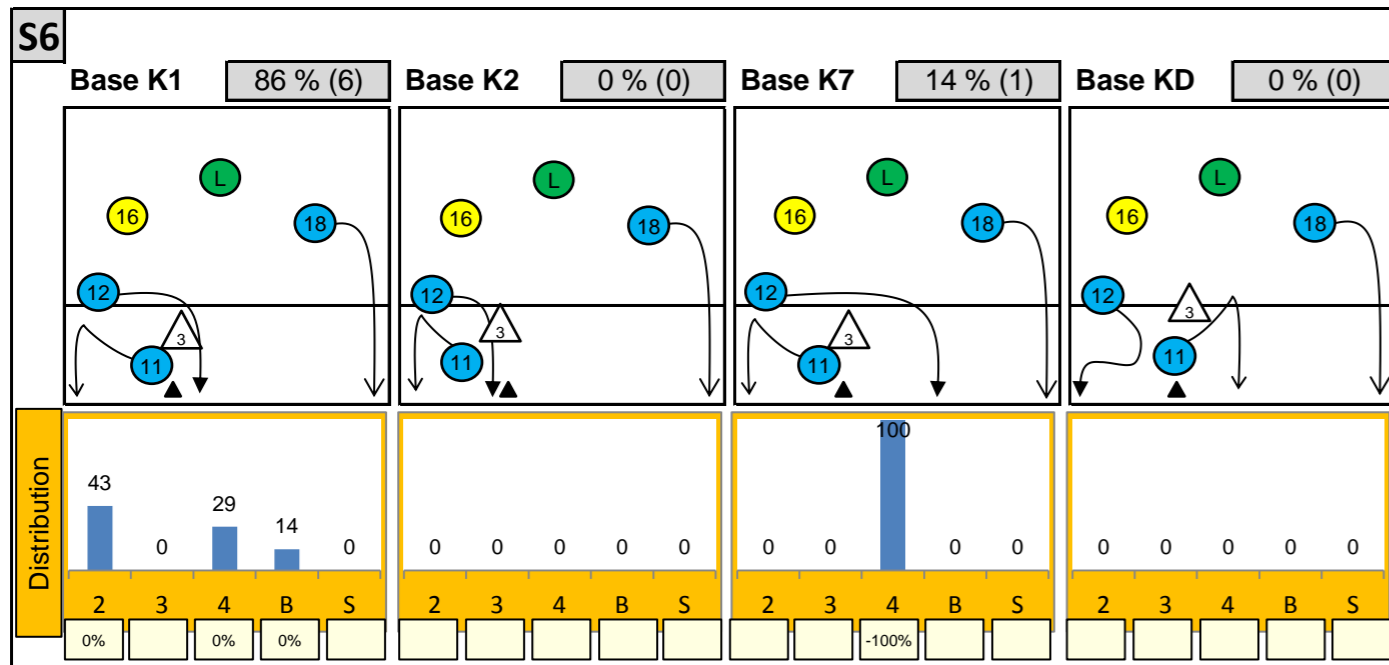
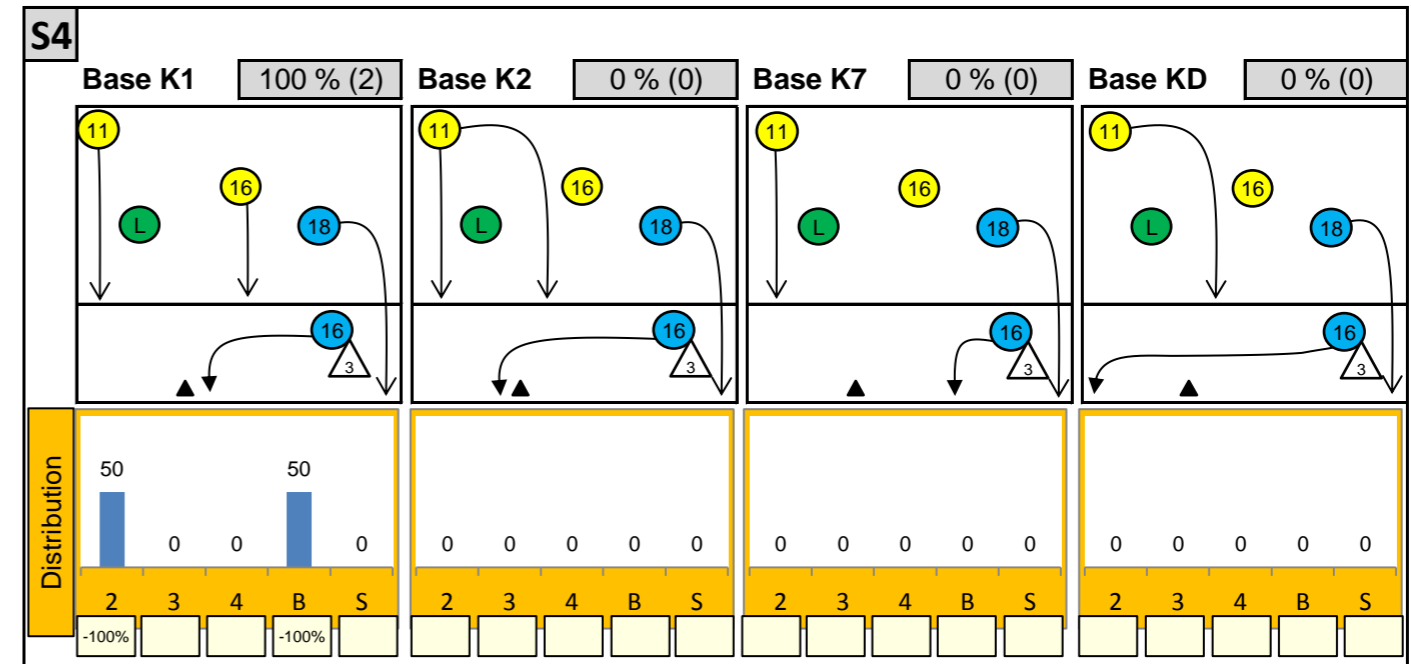
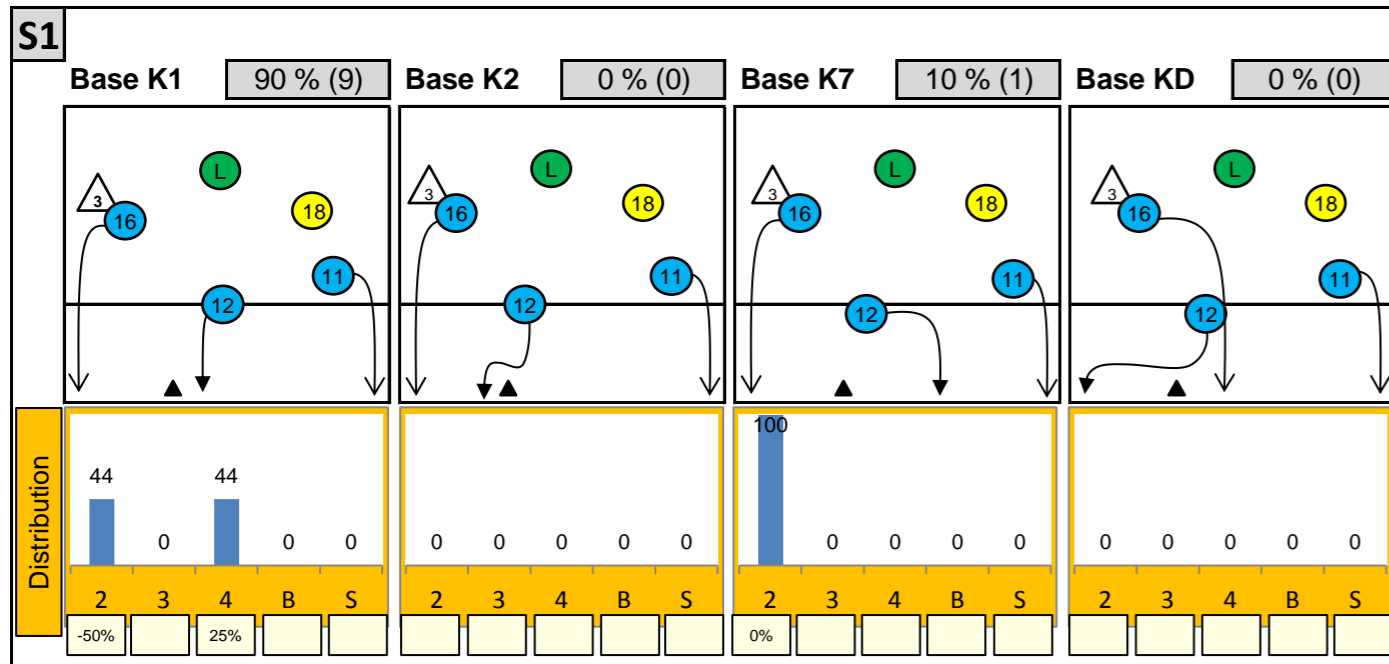
Reception	Σ	Σ %	=/	=/ %	+	+ %	#	# %	+# %	Eff
Austria96	30	100%	2	7%	6	20%	13	43%	63%	57%
18 Radl	22	73%	2	9%	5	23%	9	41%	64%	55%
16 Markovic	4	13%	0	0%	1	25%	3	75%	100%	100%
17 Fink	3	10%	0	0%	0	0%	1	33%	33%	33%
2 Berger	1	3%	0	0%	0	0%	0	0%	0%	0%
3 Schmit	0	0%	0	-	0	-	0	-	-	-
4 Peischl	0	0%	0	-	0	-	0	-	-	-

K1-Attacks after R#+	Σ	Σ %	=	= %	#	# %	Eff
Austria96	17	100%	3	18%	3	18%	-6%
16 Markovic	7	41%	0	0%	3	43%	29%
11 Maros	5	29%	2	40%	0	0%	-40%
12 Nasimovic	3	18%	0	0%	0	0%	0%
17 Fink	2	12%	1	50%	0	0%	-50%
2 Berger	0	0%	0	-	0	-	-
3 Schmit	0	0%	0	-	0	-	-
4 Peischl	0	0%	0	-	0	-	-

K2-Attacks - Transitor	Σ	Σ %	=	= %	#	# %	Eff
Austria96	19	100%	2	11%	5	26%	16%
16 Markovic	11	58%	0	0%	4	36%	36%
11 Maros	4	21%	1	25%	0	0%	-25%
18 Radl	3	16%	1	33%	1	33%	0%
8 Holzer	1	5%	0	0%	0	0%	0%
2 Berger	0	0%	0	-	0	-	-
3 Schmit	0	0%	0	-	0	-	-
4 Peischl	0	0%	0	-	0	-	-



Attackdistribution depending on Settercalls - Austria96



2: Attack of Opposite

3: Attack of Middleblocker

4: Attack of Outside

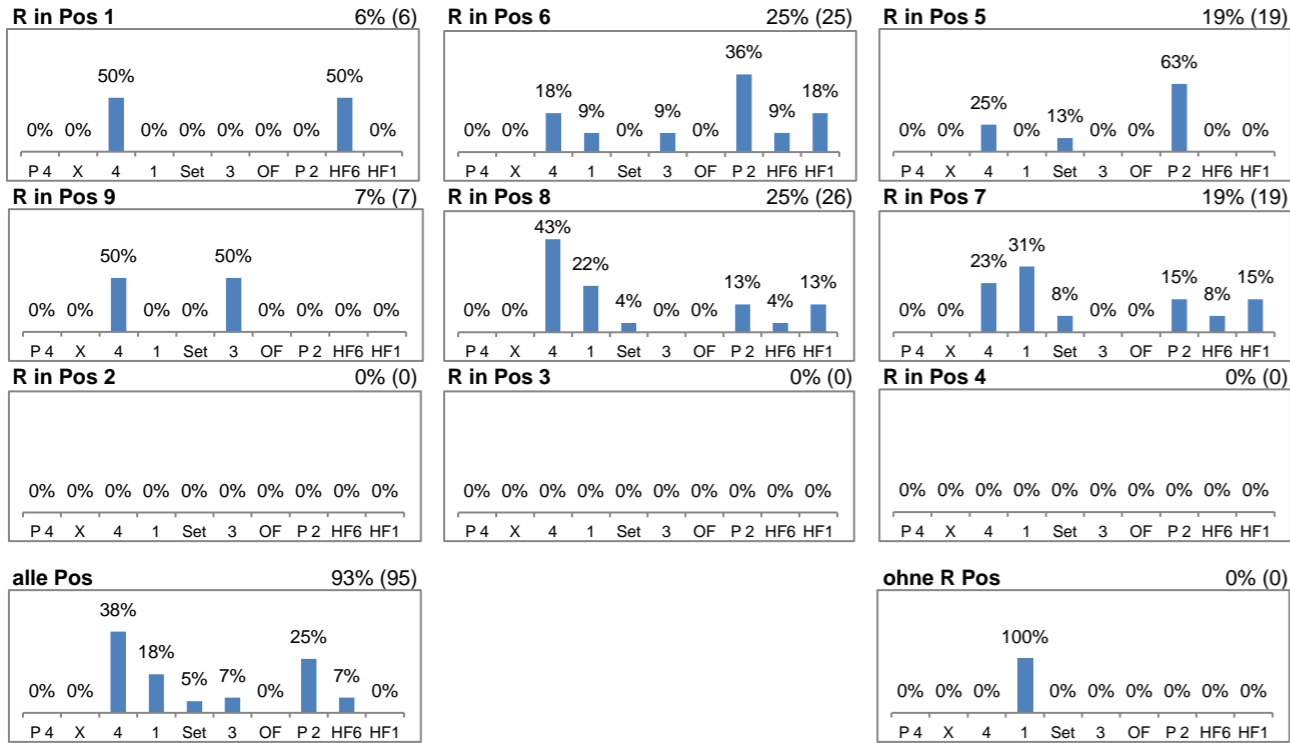
B: Attack of Backrow

S: Attack of Setter

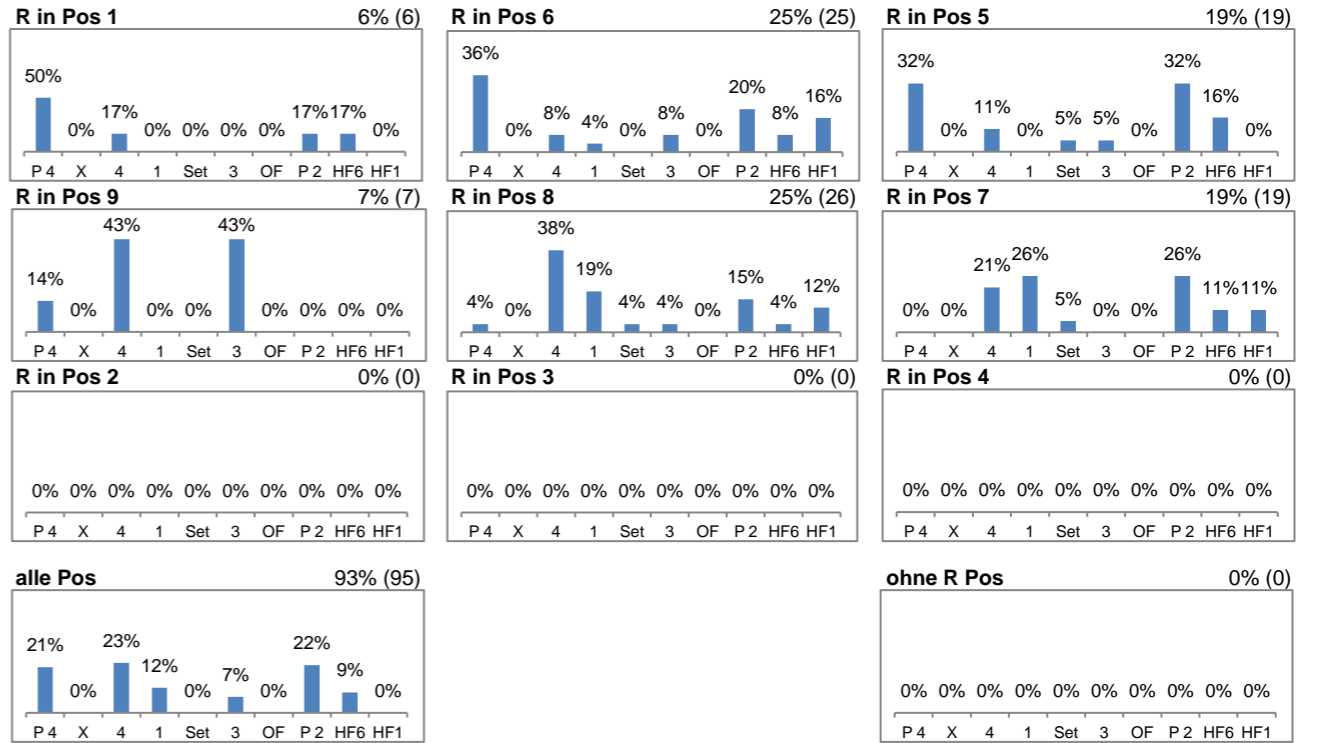
xx%: Efficiency of Attacks (-100% to +100%)

Attacks depending on Reception Position - Austria96

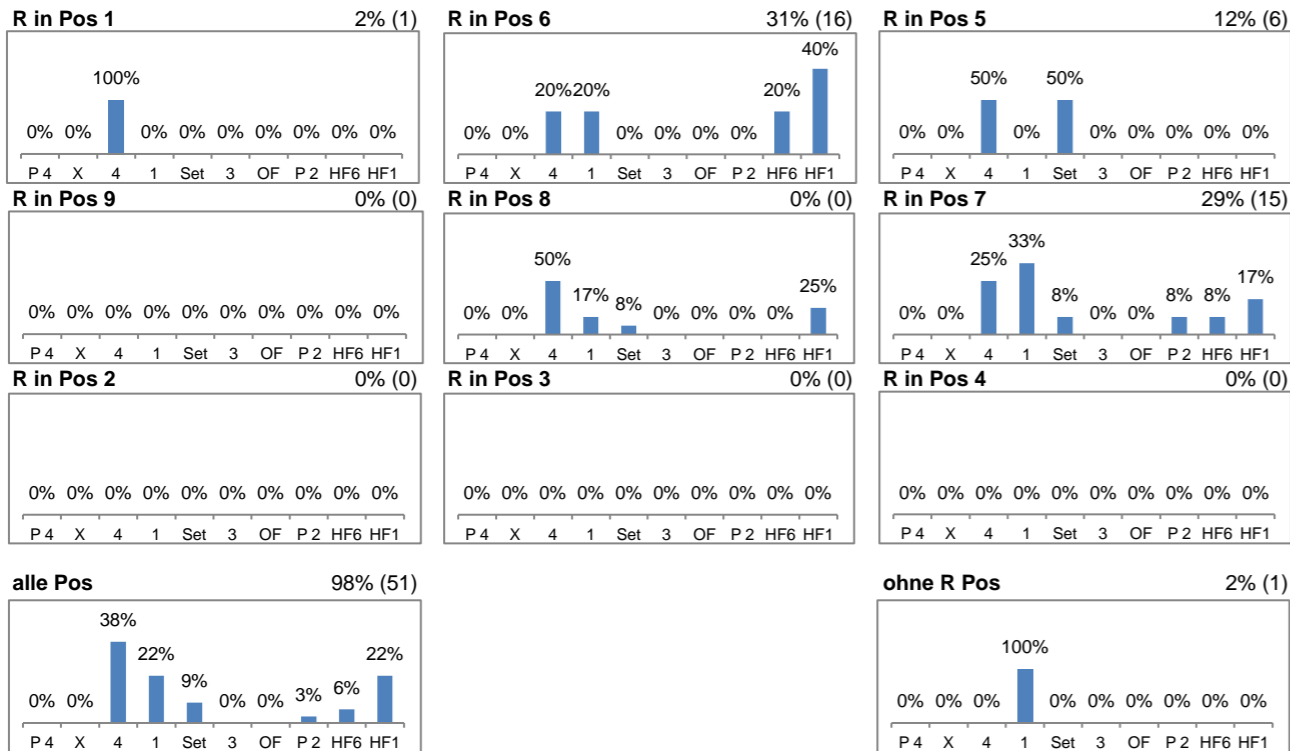
Setter back (S1, S6, S5) - R#+



Setter back (S1, S6, S5) - all Receptions



Setter front (S4, S3, S2) - R#+



Setter front (S4, S3, S2) - all Receptions

