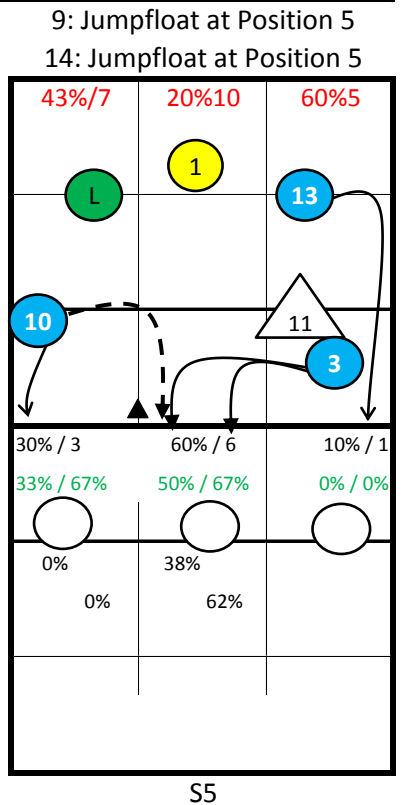
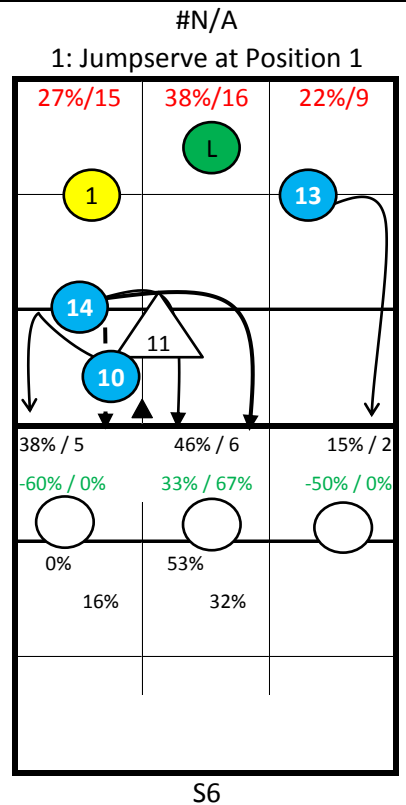
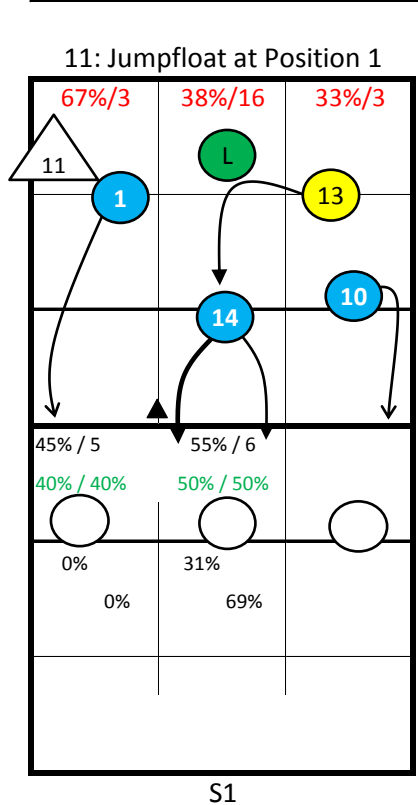


### Roster

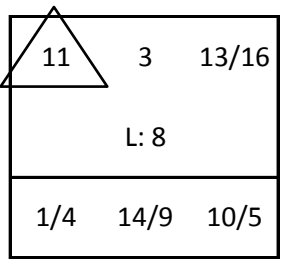
1 Vaida	Out
2 Iacob	Out
3 Filipas	MB
6 Rosca	Out
7 Dobra	Set
8 Molnar	Lib
9 Ursachi	MB
10 Teanu	Opp
11 Mocan	Set
13 Rus	Out
14 Marin	MB
15 Pamfil	Lib
<b>16 Matei</b>	<b>Out</b>
17 Petromaneant	Out

## Romania -



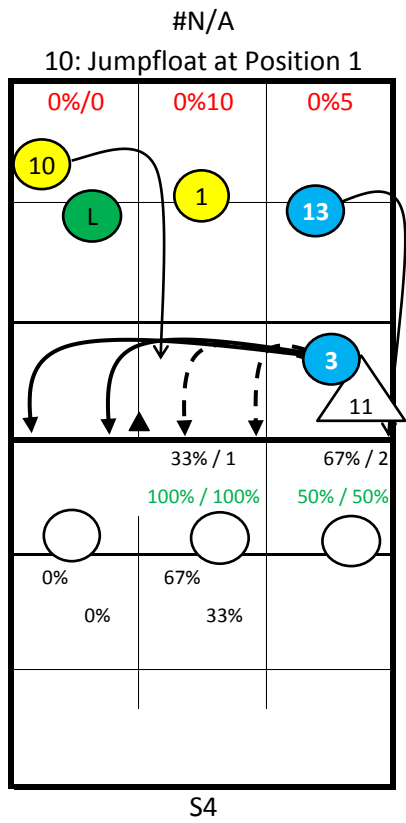
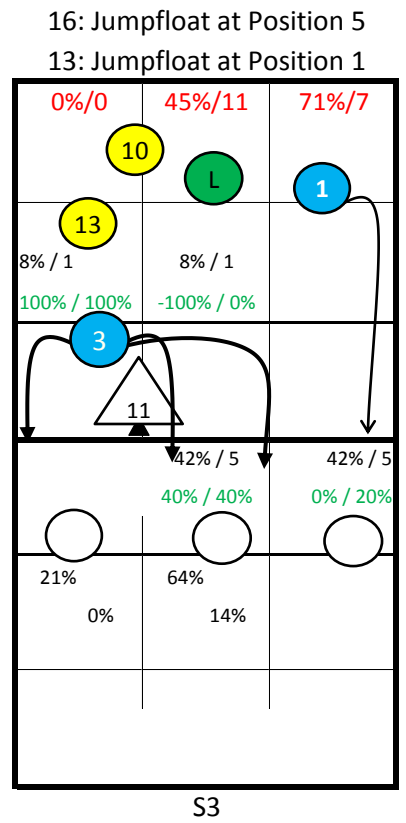
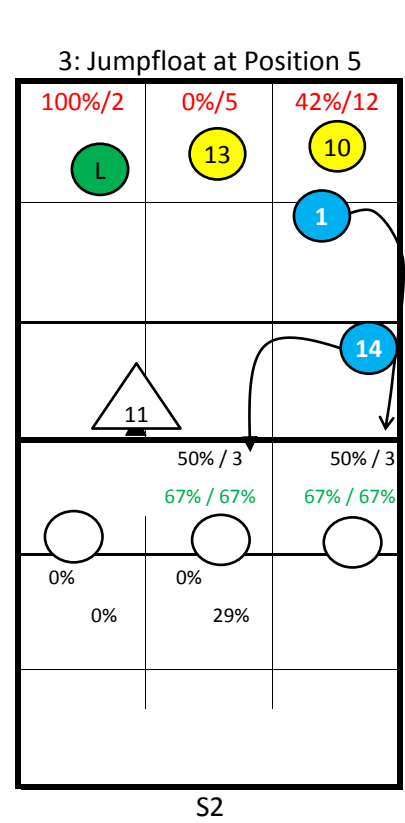


### Starting Lineup:



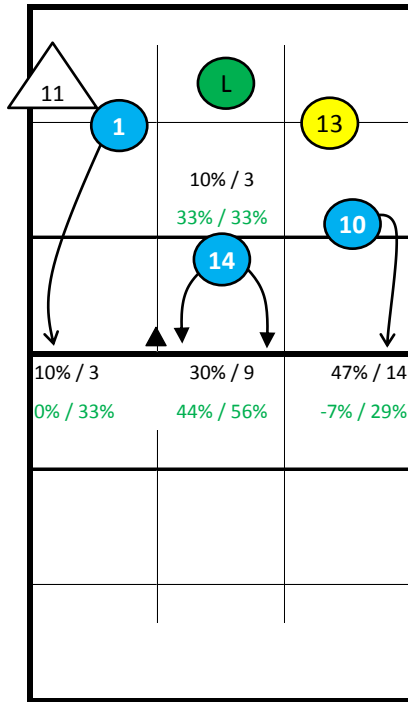
### Rotation:

Ser: S1  
Rec: S1

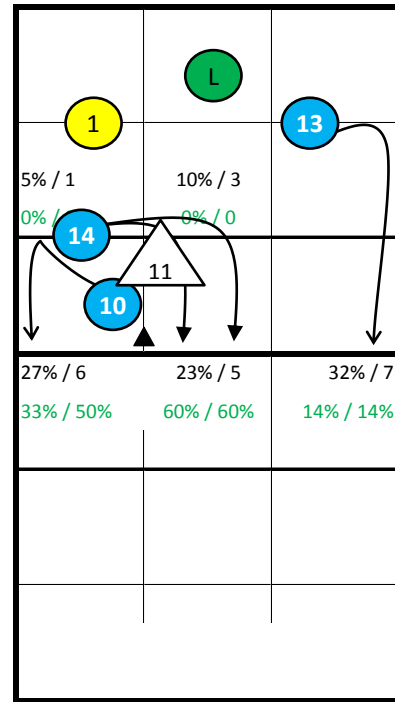


### Notes:

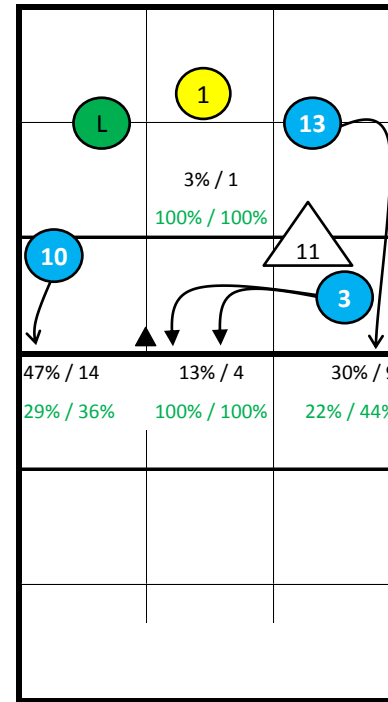

# Romania -



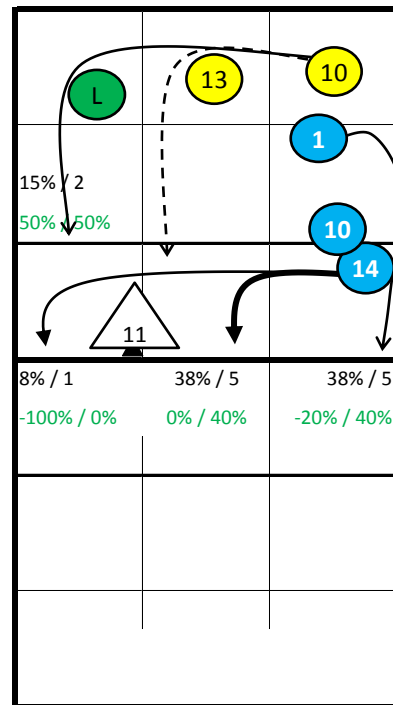
S1



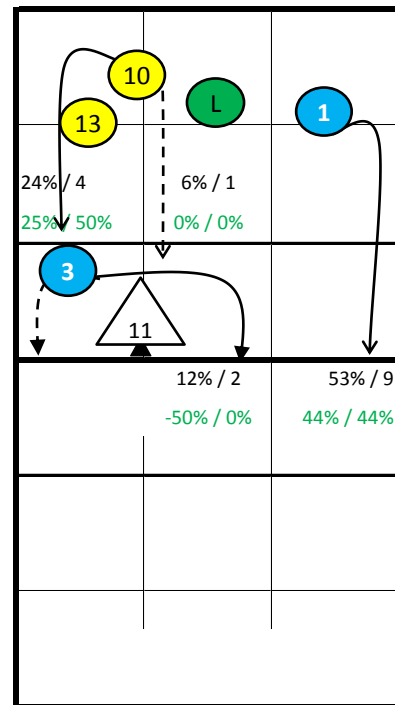
S6



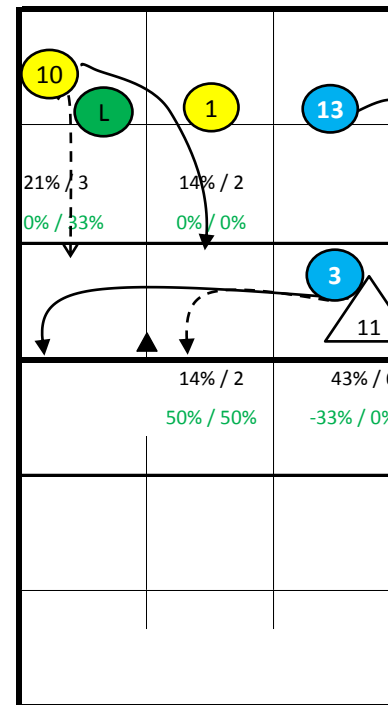
S5



S2



S3



S4

## Notes:

## Romania - all Statistics

pld	Points					Serve								Reception										Attack											
	Set	pts	P/s	easy=	all=	W-L	Σ	=	-	+	#	=%	#%	eff%	Σ	in %	=	/	-	+	#	=/%	+#%	#%	eff%	Σ	in %	=	/	!	+	#	=/%	#%	eff%
Romania	10	143	14,3	74	211	-68	210	25	66	99	20	12%	10%	57%	199		17	12	100	45	25	15%	36%	13%	21%	284		32	27	0	35	105	21%	37%	16%
1 Vaida	8	22	2,8	17	40	-18	27	8	7	8	4	30%	15%	44%	57	29%	11	6	22	13	5	30%	32%	9%	2%	55	19%	9	7	0	7	18	29%	33%	4%
2 Iacob	1	0			3	-3	2	0	0	2	0	0%	0%	100%	0											0									
3 Filipas	10	23	2,3	6	18	5	24	5	6	11	2	21%	8%	54%	0											25	9%	1	2	0	3	15	12%	60%	48%
6 Rosca	8	7	0,9	1	2	5	12	0	2	8	2	0%	17%	83%	1	1%	0	0	0	1	0	0%	100%	0%	100%	15	5%	1	1	0	1	5	13%	33%	20%
7 Dobra	5	0		2	7	-7	2	0	2	0	0	0%	0%	0%	0											1	0%	0	1	0	0	0	100%	0%	-100%
8 Molnar	10	0			17	-17	0							52	26%	0	0	30	12	10	0%	42%	19%	42%	0										
9 Ursachi	3	7	2,3	2	6	1	9	0	4	4	1	0%	11%	56%	0											8	3%	2	0	0	1	4	25%	50%	25%
10 Teanu	10	23	2,3	12	34	-11	22	1	7	13	1	5%	5%	64%	2	1%	0	0	2	0	0	0%	0%	0%	0%	65	23%	9	9	0	5	21	28%	32%	5%
11 Mocan	10	11	1,1	10	25	-14	35	2	12	19	2	6%	6%	60%	1	1%	1	0	0	0	0	100%	0%	0%	-100%	11	4%	0	1	0	2	6	9%	55%	45%
13 Rus	7	15	2,1	11	18	-3	16	4	1	6	5	25%	31%	69%	27	14%	3	2	16	3	3	19%	22%	11%	4%	34	12%	6	1	0	6	9	21%	26%	6%
14 Marin	8	17	2,1	5	13	4	31	0	12	19	0	0%	0%	61%	0											27	10%	1	3	0	5	14	15%	52%	37%
15 Pamfil	0	0				0	0							0												0									
16 Matei	8	13	1,6	5	15	-2	23	3	11	7	2	13%	9%	39%	32	16%	0	1	18	11	2	3%	40%	6%	38%	30	11%	2	1	0	5	10	10%	33%	23%
17 Petromaneant	6	5	0,8	3	13	-8	7	2	2	2	1	29%	14%	43%	27	14%	2	3	12	5	5	19%	38%	19%	19%	13	5%	1	1	0	0	3	15%	23%	8%

pld	Block						Defense						Freeball					Set		
	Σ	=	+	#	#%	eff%	Σ	=	/-!	+#	+#%	eff%	Σ	err	bad	god	eff%	Σ	=	eff%
Romania	87	42	14	18	21%	-11%	141	59	14	68	48%	55%	67	2	9	56	78%	285	7	80%
1 Vaida	2	1	1	0	0%	0%	18	4	1	13	72%	78%	5	0	2	3	40%	7	0	86%
2 Iacob	2	2	0	0	0%	-100%	2	1	1	0	0%	0%	0					0		
3 Filipas	21	6	5	6	29%	24%	8	4	2	2	25%	38%	6	0	1	5	83%	1	0	-100%
6 Rosca	1	0	0	0	0%	0%	2	0	1	1	50%	100%	2	0	0	2	100%	1	0	100%
7 Dobra	2	1	0	0	0%	-50%	5	3	0	2	40%	40%	0					31	2	71%
8 Molnar	0						34	17	3	14	41%	41%	20	0	2	18	90%	30	0	80%
9 Ursachi	8	4	0	2	25%	-25%	1	0	0	1	100%	100%	0					3	0	67%
10 Teanu	12	8	2	1	8%	-42%	12	5	2	5	42%	58%	11	1	2	8	64%	4	1	-50%
11 Mocan	17	8	3	3	18%	-12%	20	8	0	12	60%	60%	1	1	0	0	-100%	189	4	90%
13 Rus	3	2	0	1	33%	-33%	8	2	1	5	63%	75%	7	0	2	5	57%	4	0	0%
14 Marin	14	7	3	3	21%	-7%	6	2	1	3	50%	67%	6	0	0	6	100%	4	0	50%
15 Pamfil	0						0						0					0		
16 Matei	4	3	0	1	25%	-50%	15	6	2	7	47%	60%	6	0	0	6	100%	8	0	12%
17 Petromaneant	1	0	0	1	100%	100%	10	7	0	3	30%	30%	3	0	0	3	100%	3	0	67%

pld Set      played Sets  
 P/s          Points per Set  
 pts          Points  
 easy=        easy errors (serve, net contact, ...)  
 all=          all errors  
 W-L          points - errors  
 Σ            sum of all events  
 in %         in percent of all team events

## Romania - Attack-Statistic

	K1 & K2 Attacks								K1 All Attacks								K2 Attacks								K1 aft R other Ply				K1 after own Rec			
	Σ	in %	=	/	#	=/%	#%	eff	Σ	in %	=	/	#	=/%	#%	eff	Σ	in %	=	/	#	=/%	#%	eff	sum	#	#%	eff	sum	#	#%	eff
<b>Romania</b>	255		28	24	93	20%	36%	16%	134		15	14	50	22%	37%	16%	121		13	10	43	19%	36%	17%	112	41	37%		22	9	41%	
10 Teanu	64	25%	9	9	21	28%	33%	5%	23	17%	3	6	7	39%	30%	-9%	41	34%	6	3	14	22%	34%	12%	22	7	32%	-9%	1	0	0%	0%
1 Vaida	50	20%	7	6	16	26%	32%	6%	24	18%	4	3	6	29%	25%	-4%	26	21%	3	3	10	23%	38%	15%	17	1	6%	-29%	7	5	71%	57%
13 Rus	29	11%	5	1	8	21%	28%	7%	15	11%	2	0	5	13%	33%	20%	14	12%	3	1	3	29%	21%	-7%	11	4	36%	27%	4	1	25%	0%
16 Matei	28	11%	2	1	10	11%	36%	25%	16	12%	1	1	6	13%	38%	25%	12	10%	1	0	4	8%	33%	25%	9	3	33%	11%	7	3	43%	43%
14 Marin	27	11%	1	3	14	15%	52%	37%	16	12%	1	2	8	19%	50%	31%	11	9%	0	1	6	9%	55%	45%	16	8	50%	31%	0			
3 Filipas	24	9%	1	2	14	13%	58%	46%	18	13%	1	1	10	11%	56%	44%	6	5%	0	1	4	17%	67%	50%	18	10	56%	44%	0			
6 Rosca	14	5%	1	1	4	14%	29%	14%	11	8%	1	1	3	18%	27%	9%	3	2%	0	0	1	0%	33%	33%	11	3	27%	9%	0			
17 Petromaneant	12	5%	1	1	2	17%	17%	0%	6	4%	1	0	2	17%	33%	17%	6	5%	0	1	0	17%	0%	-17%	3	2	67%	67%	3	0	0%	-33%
9 Ursachi	7	3%	1	0	4	14%	57%	43%	5	4%	1	0	3	20%	60%	40%	2	2%	0	0	1	0%	50%	50%	5	3	60%	40%	0			
2 Iacob	0								0								0								0				0			
7 Dobra	0								0								0								0				0			
8 Molnar	0								0								0								0				0			
11 Mocan	0								0								0								0				0			
15 Pamfil	0								0								0								0				0			

	K1 after R#+								K1 after R-!								Freeball-Attacks							
	Σ	in %	=	/	#	=/%	#%	eff	Σ	in %	=	/	#	=/%	#%	eff	Σ	in %	=	/	#	=/%	#%	eff
<b>Romania</b>	67		7	6	30	19%	45%	25%	67		8	8	20	24%	30%	6%	55		6	3	17	16%	31%	15%
10 Teanu	8	12%	1	3	2	50%	25%	-25%	15	22%	2	3	5	33%	33%	0%	25	278%	2	2	9	16%	36%	20%
1 Vaida	10	15%	2	0	4	20%	40%	20%	14	21%	2	3	2	36%	14%	-21%	11	367%	2	1	3	27%	27%	0%
13 Rus	5	7%	0	0	1	0%	20%	20%	10	15%	2	0	4	20%	40%	20%	5	250%	1	0	2	20%	40%	20%
16 Matei	3	4%	0	0	2	0%	67%	67%	13	19%	1	1	4	15%	31%	15%	7	700%	1	0	1	14%	14%	0%
14 Marin	13	19%	1	1	8	15%	62%	46%	3	4%	0	1	0	33%	0%	-33%	0							
3 Filipas	15	22%	1	1	9	13%	60%	47%	3	4%	0	0	1	0%	33%	33%	0							
6 Rosca	7	10%	1	1	2	29%	29%	0%	4	6%	0	0	1	0%	25%	25%	2	200%	0	0	1	0%	50%	50%
17 Petromaneant	2	3%	0	0	0	0%	0%	0%	4	6%	1	0	2	25%	50%	25%	4	0	0	0	0	0%	0%	0%
9 Ursachi	4	6%	1	0	2	25%	50%	25%	1	1%	0	0	1	0%	100%	100%	1	100%	0	0	1	0%	100%	100%
2 Iacob	0								0								0							
7 Dobra	0								0								0							
8 Molnar	0								0								0							
11 Mocan	0								0								0							
15 Pamfil	0								0								0							

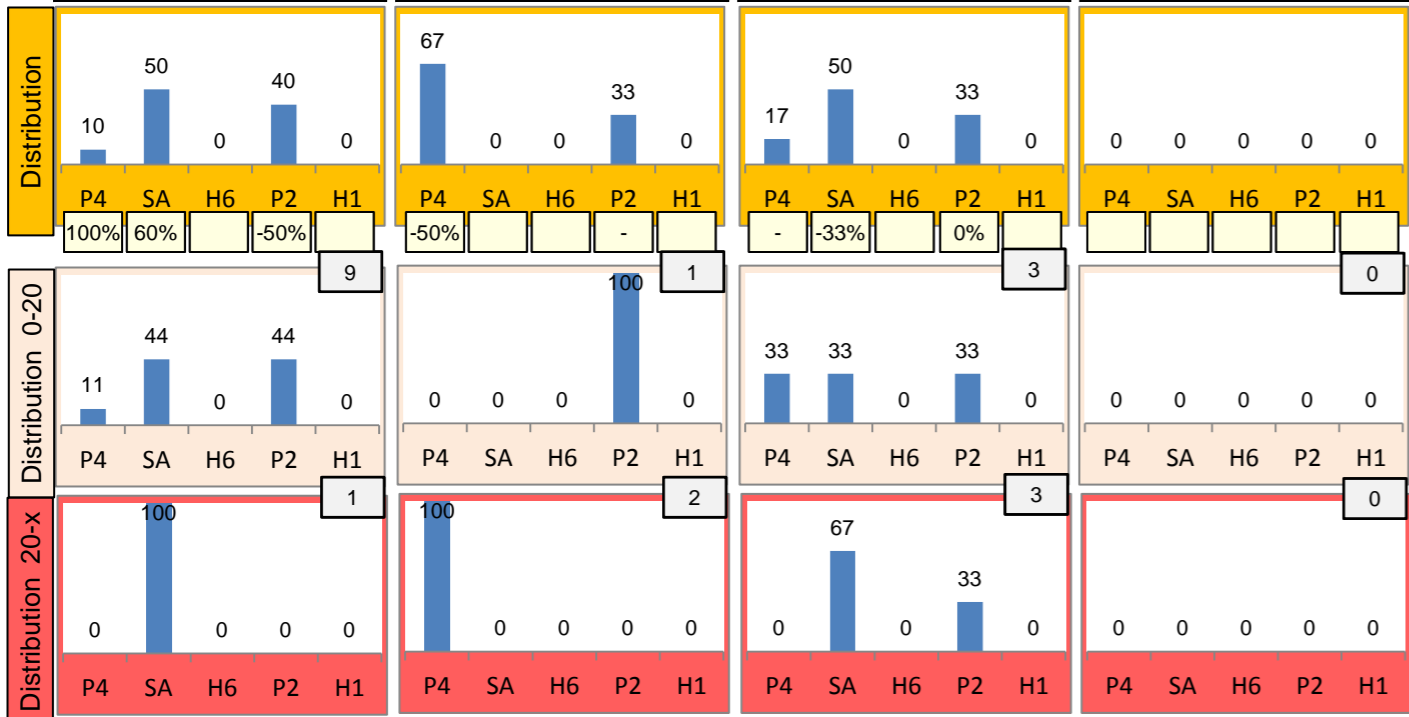
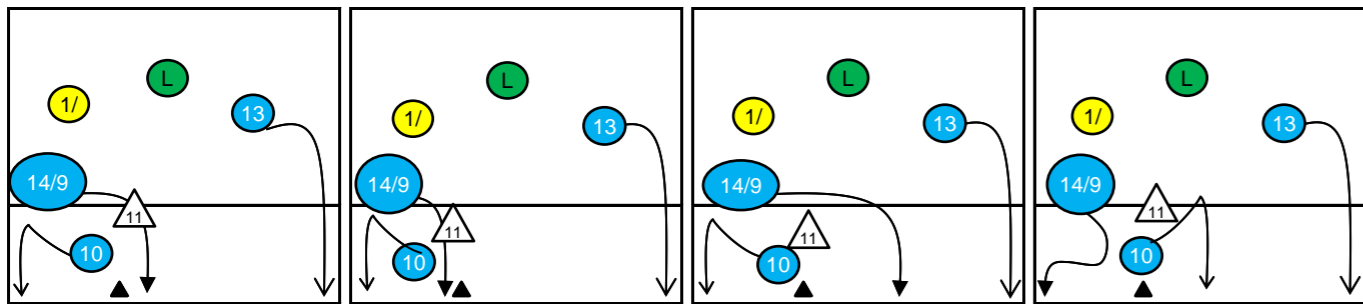




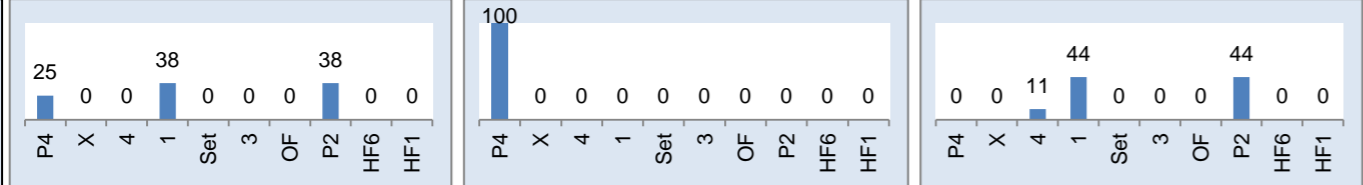
# Rotation 6

# Romania

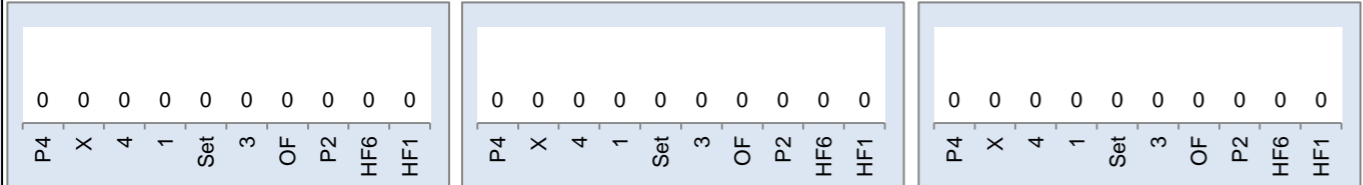
Base K1 53% (10) Base K2 16% (3) Base K7 32% (6) Base KD 0% (0)



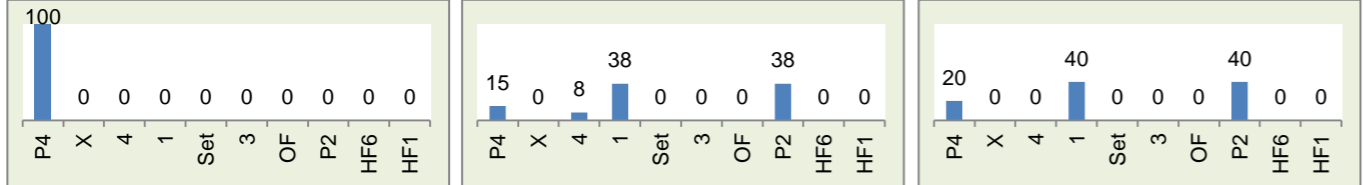
Rec in Pos 1 42% (8) Rec in Pos 6 11% (2) Rec in Pos 5 47% (9)



Rec in Pos 2 0% (0) Rec in Pos 3 0% (0) Rec in Pos 4 0% (0)



Settermovement to 4 1 Settermovement to 3 13 Settermovement to 2 5



# Distribution

K1 after all R 34 -9% 29% K1 after R#+ 19 -11% 32% K2 Transition 21 19% 33%

0	-	2	6%	0	-	0	-	0	-	0	-	1	5%	2	10%	0	-
-	-	-50%	0%	-	-	-	-	-	-	-	-	0%	0%	-100%	0%	-	-
10	29%	9	26%	13	38%	7	37%	8	42%	4	21%	6	29%	5	24%	7	33%
-50%	0%	22%	56%	8%	38%	-43%	0%	25%	63%	-25%	25%	33%	50%	60%	60%	14%	14%

Reception	Σ	Σ %	=/	=/ %	+	+ %	#	# %	+ # %	Eff
Romania	52	100%	9	17%	15	29%	4	8%	37%	19%
8 Molnar	16	31%	0	0%	6	38%	0	0%	38%	38%
1 Vaida	15	29%	7	47%	2	13%	2	13%	27%	-20%
13 Rus	9	17%	1	11%	1	11%	1	11%	22%	11%
16 Matei	6	12%	1	17%	3	50%	0	0%	50%	33%
17 Petromaneant	5	10%	0	0%	2	40%	1	20%	60%	60%
6 Rosca	1	2%	0	0%	1	100%	0	0%	100%	100%

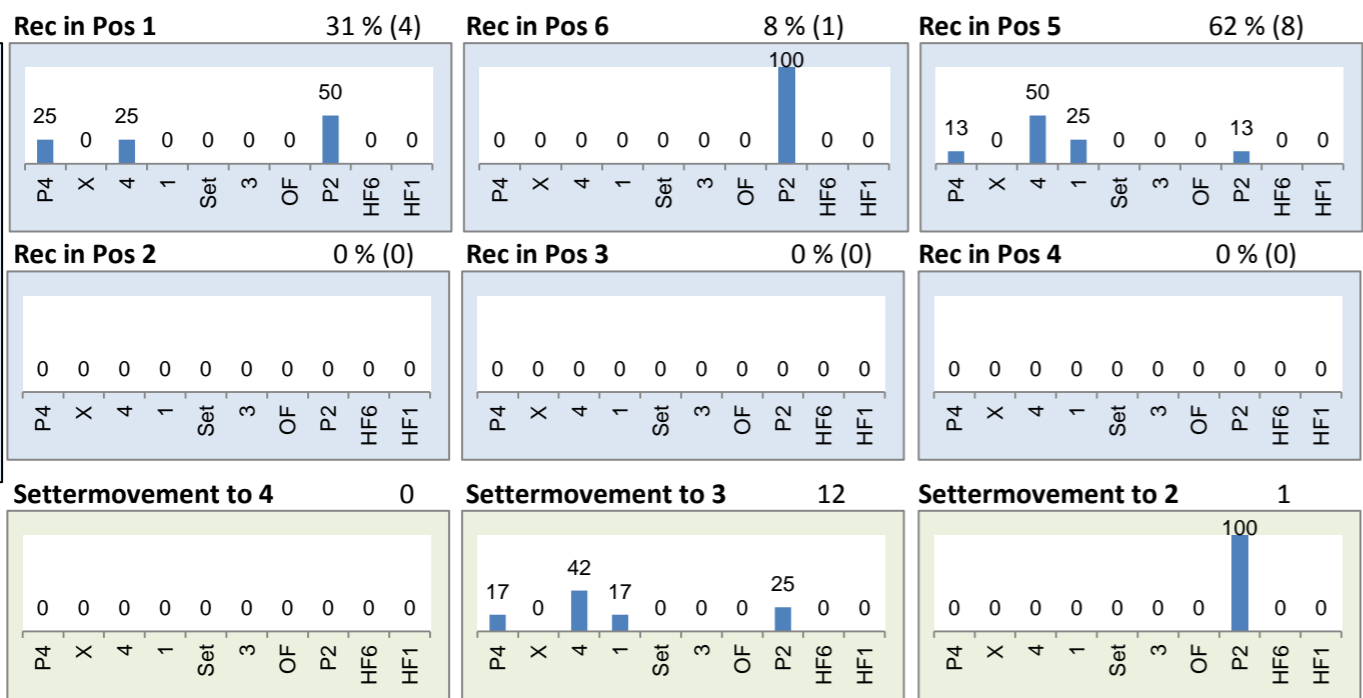
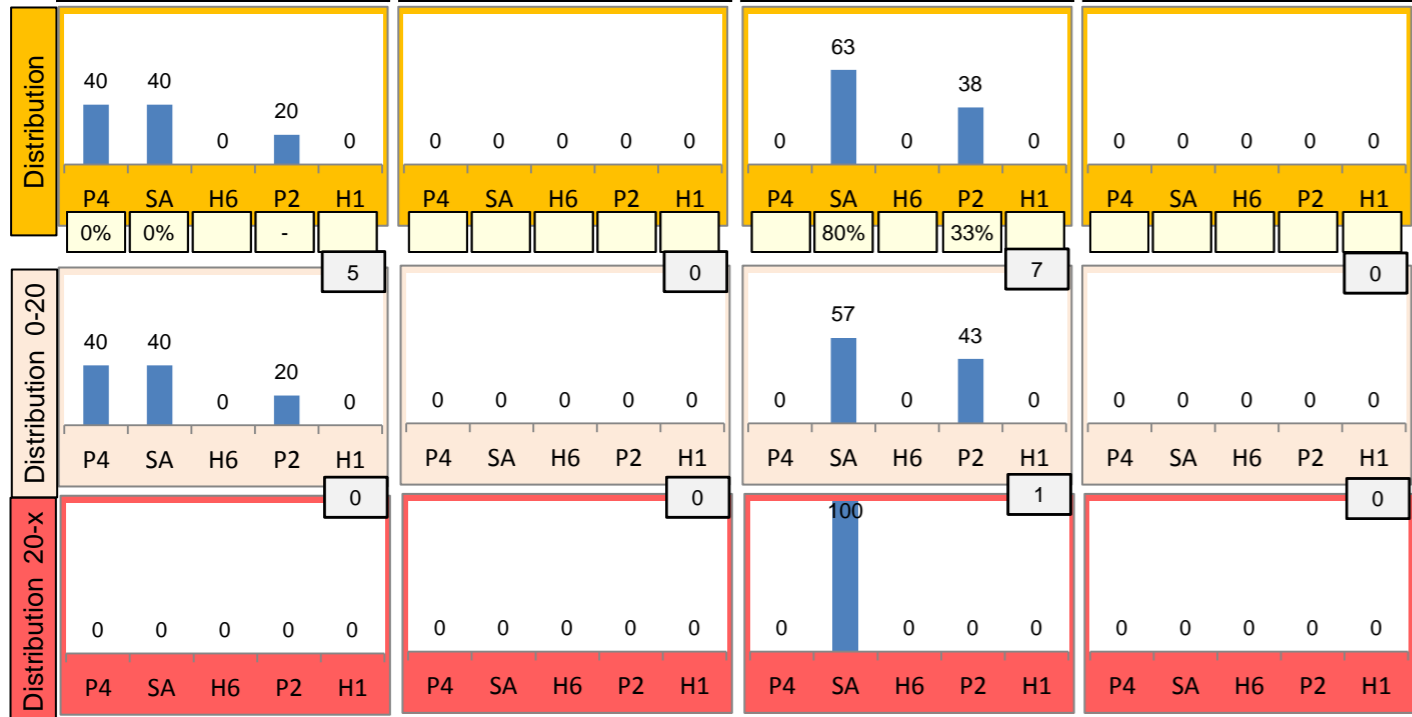
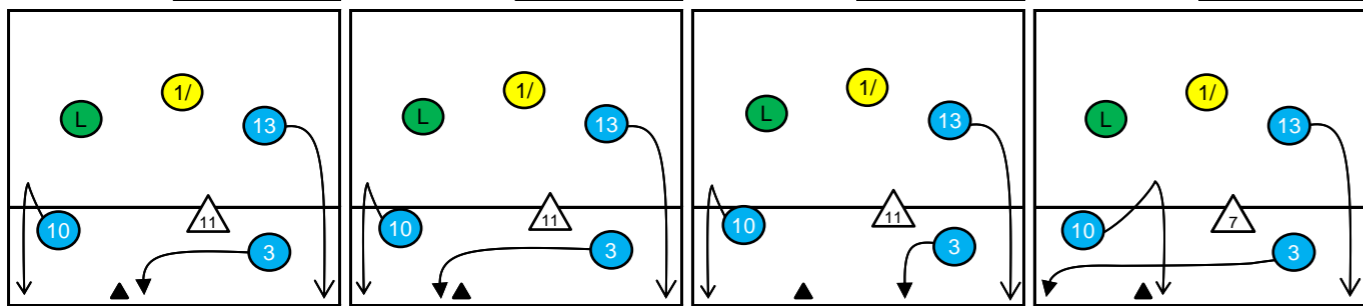
K1-Attacks after R#+	Σ	Σ %	=	= %	#	# %	Eff
Romania	19	100%	4	21%	6	32%	-11%
14 Marin	6	32%	1	17%	4	67%	33%
6 Rosca	4	21%	0	0%	0	0%	-25%
10 Teanu	4	21%	1	25%	0	0%	-75%
1 Vaida	1	5%	1	100%	0	0%	-100%
3 Filipas	1	5%	0	0%	1	100%	100%
9 Ursachi	1	5%	1	100%	0	0%	-100%
16 Matei	1	5%	0	0%	1	100%	100%

K2-Attacks - Transitor	Σ	Σ %	=	= %	#	# %	Eff
Romania	21	100%	3	14%	7	33%	19%
10 Teanu	7	33%	1	14%	3	43%	29%
13 Rus	4	19%	0	0%	1	25%	25%
14 Marin	3	14%	0	0%	2	67%	67%
1 Vaida	2	10%	2	100%	0	0%	-100%
9 Ursachi	2	10%	0	0%	1	50%	50%
16 Matei	2	10%	0	0%	0	0%	0%
17 Petromaneant	1	5%	0	0%	0	0%	0%

# Rotation 5

# Romania

Base K1 38 % (5) Base K2 0 % (0) Base K7 62 % (8) Base KD 0 % (0)



# Distribution

K1 after all R 30 10% 37% K1 after R#+ 13 31% 54% K2 Transition 33 27% 39%

Category	Value	%	Value	%
K1 after all R	30	10%	37%	
K1 after R#+	13	31%	54%	
K2 Transition	33	27%	39%	

Reception	Σ	Σ %	=/	=/ %	+	+ %	#	# %	+ # %	Eff
Romania	40	100%	4	10%	9	23%	4	10%	33%	23%
16 Matei	11	28%	0	0%	3	27%	0	0%	27%	27%
1 Vaida	10	25%	2	20%	2	20%	0	0%	20%	0%
8 Molnar	7	18%	0	0%	1	14%	2	29%	43%	43%
17 Petromaneant	7	18%	2	29%	1	14%	1	14%	29%	0%
13 Rus	5	13%	0	0%	2	40%	1	20%	60%	60%
2 Iacob	0	0%	0	-	0	-	0	-	-	-

K1-Attacks after R#+	Σ	Σ %	=	= %	#	# %	Eff
Romania	13	100%	1	8%	7	54%	31%
3 Filipas	7	54%	0	0%	5	71%	57%
6 Rosca	2	15%	1	50%	1	50%	0%
10 Teanu	2	15%	0	0%	1	50%	0%
13 Rus	1	8%	0	0%	0	0%	0%
16 Matei	1	8%	0	0%	0	0%	0%
1 Vaida	0	0%	0	-	0	-	-
2 Iacob	0	0%	0	-	0	-	-

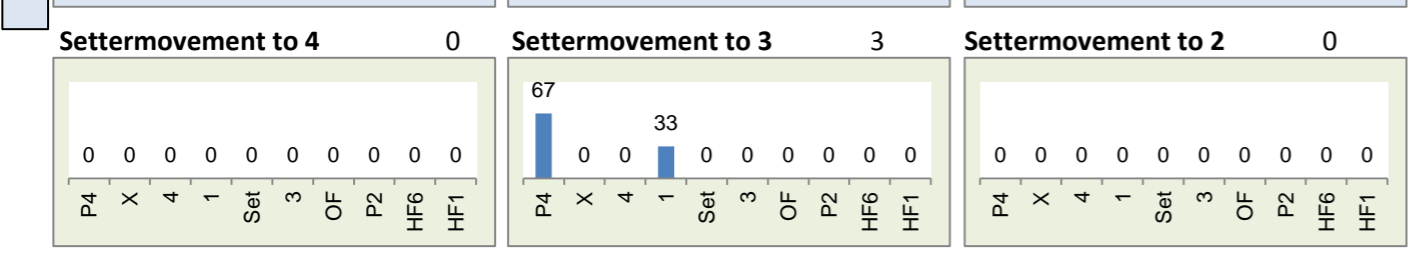
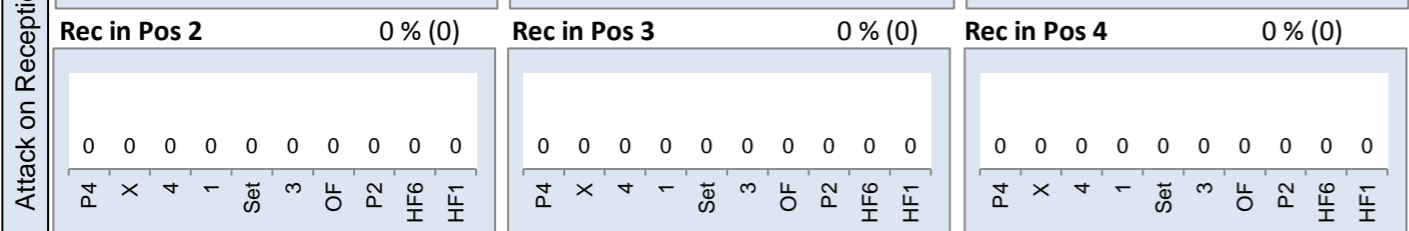
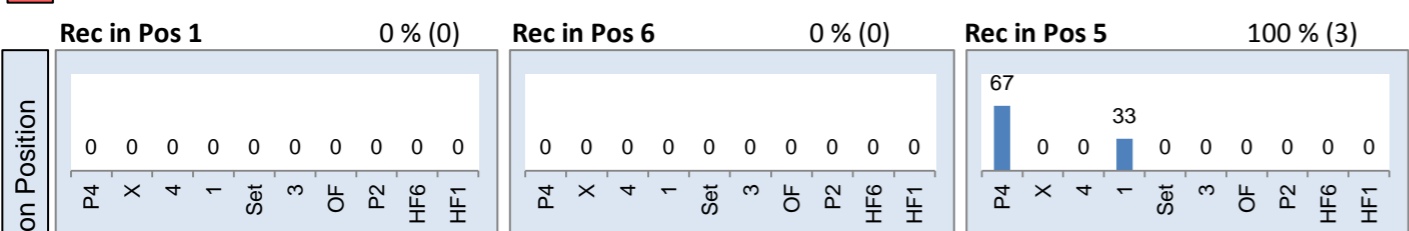
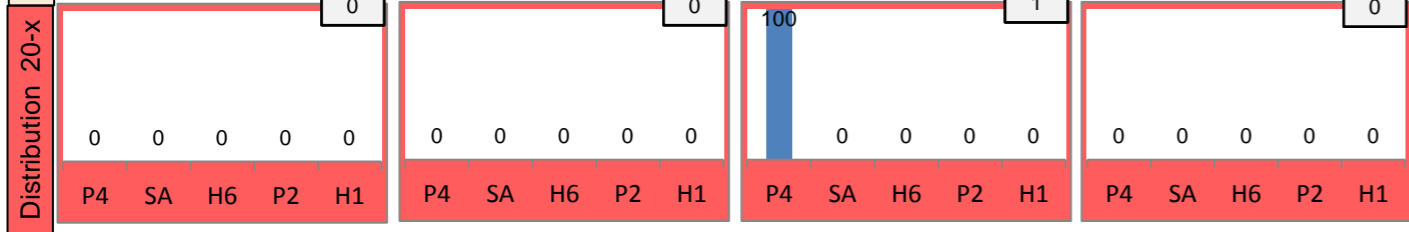
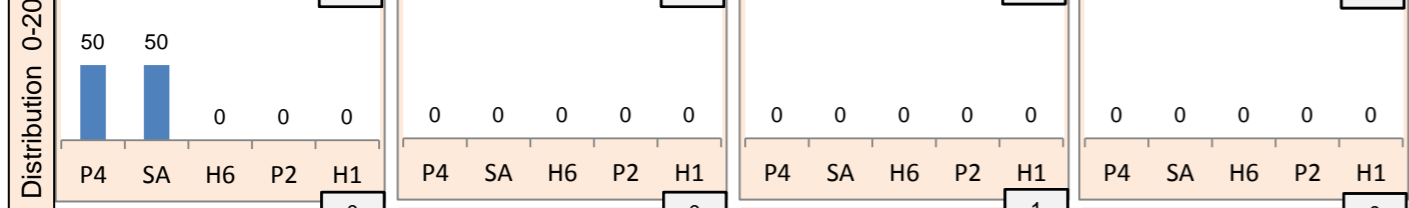
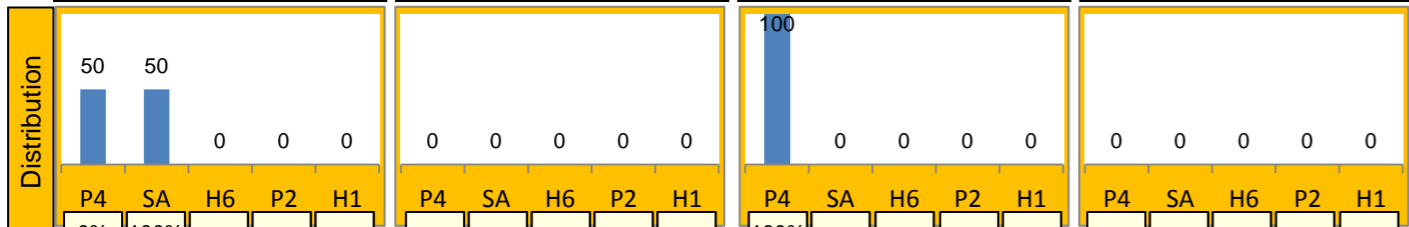
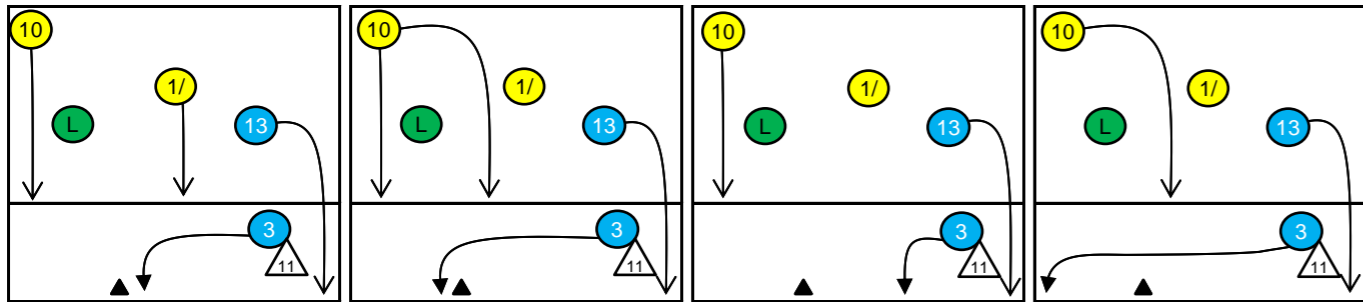
K2-Attacks - Transition	Σ	Σ %	=	= %	#	# %	Eff
Romania	33	100%	2	6%	13	39%	27%
10 Teanu	15	45%	0	0%	5	33%	27%
16 Matei	6	18%	1	17%	3	50%	33%
13 Rus	4	12%	1	25%	1	25%	-25%
1 Vaida	3	9%	0	0%	1	33%	33%
3 Filipas	3	9%	0	0%	3	100%	100%
6 Rosca	1	3%	0	0%	0	0%	0%
17 Petromaneant	1	3%	0	0%	0	0%	0%



# Rotation 4

# Romania

Base K1 67% (2) Base K2 0% (0) Base K7 33% (1) Base KD 0% (0)



# Distribution

K1 after all R 11 36% 45% K1 after R#+ 3 67% 67% K2 Transition 13 -8% 15%

Player	2	18%	0	-	0	-	0	-	0	-	0	-	0	-	0	-	0	-
0%	0%	-	-	-	-	-	-	-	-	-	-	-	-	-	-	-	-	-
0	-	1	9%	8	73%	0	-	1	33%	2	67%	0	-	2	15%	6	46%	
-	-	100%	100%	38%	50%	-	-	100%	100%	50%	50%	-	-	50%	50%	-33%	0%	

Reception	Σ	Σ %	=	= %	+	+ %	#	# %	+ # %	Eff
Romania	21	100%	6	29%	2	10%	1	5%	14%	-14%
1 Vaida	10	48%	4	40%	0	0%	0	0%	0%	-40%
13 Rus	5	24%	1	20%	0	0%	0	0%	0%	-20%
16 Matei	4	19%	0	0%	2	50%	0	0%	50%	50%
11 Mocan	1	5%	1	100%	0	0%	0	0%	0%	-100%
17 Petromaneant	1	5%	0	0%	0	0%	1	100%	100%	100%
2 Iacob	0	0%	0	-	0	-	0	-	-	-

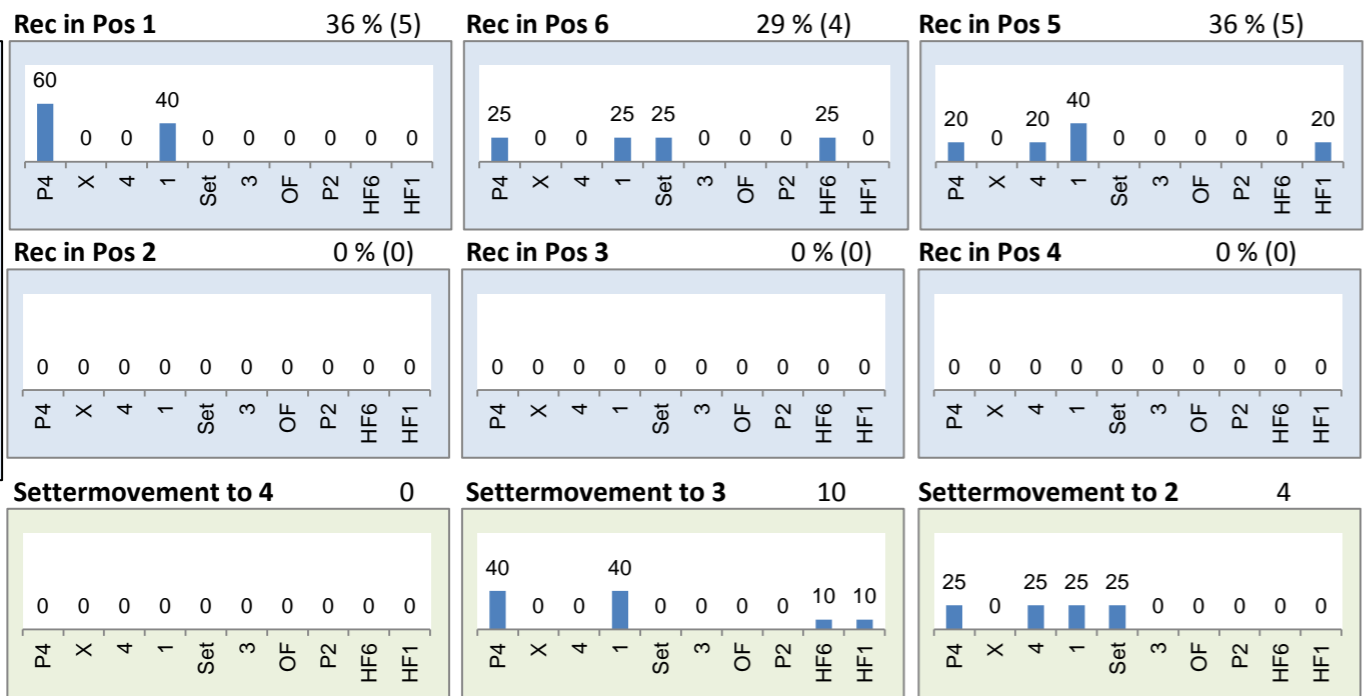
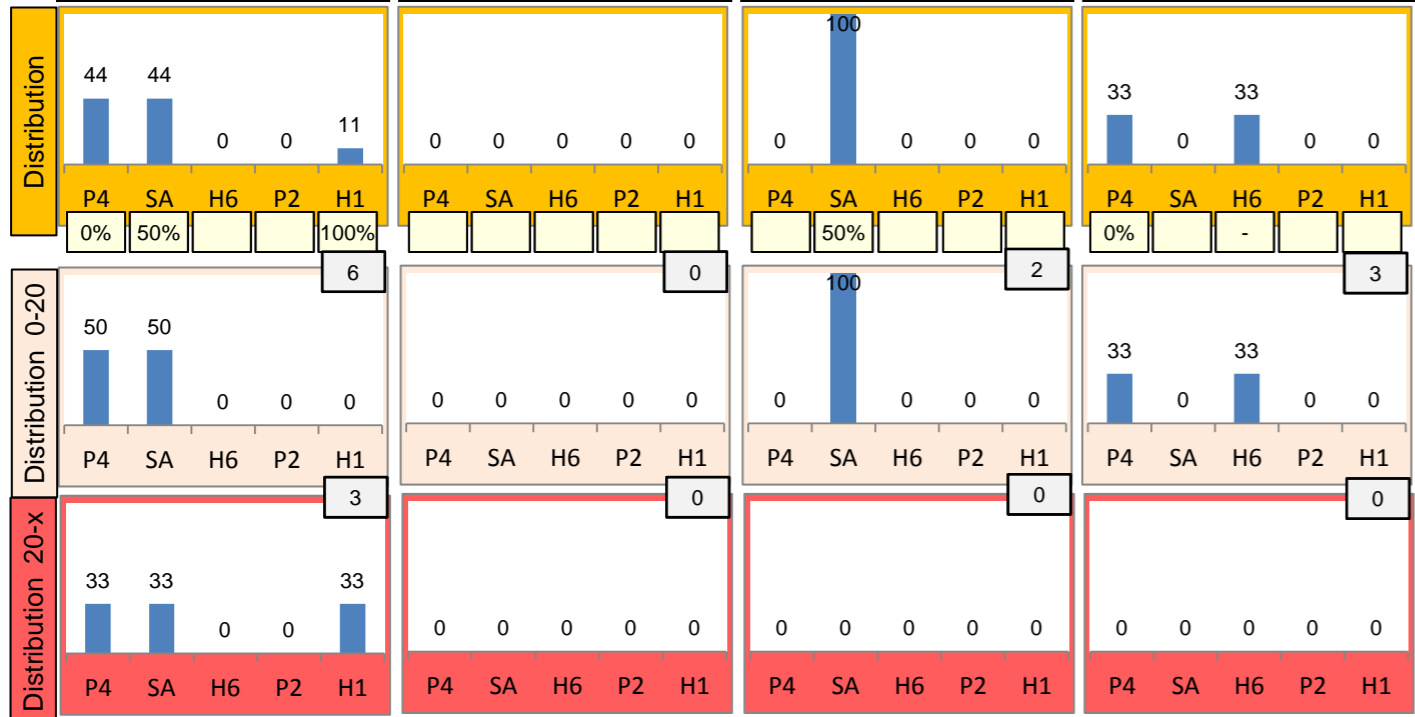
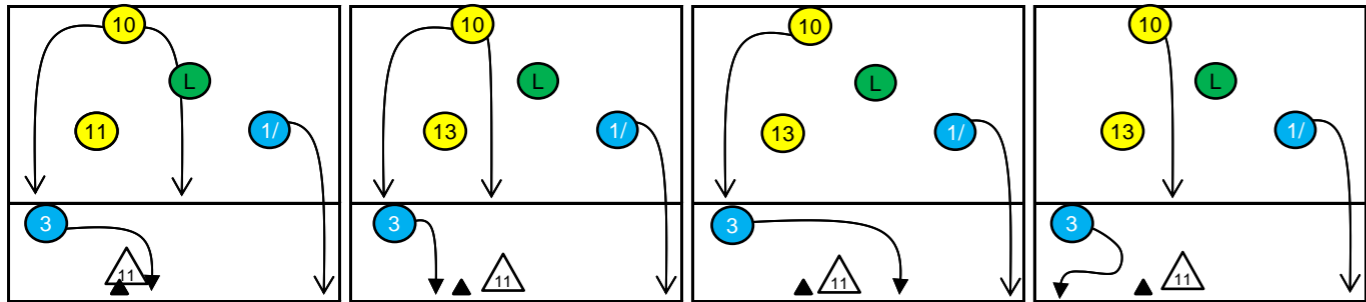
K1-Attacks after R#+	Σ	Σ %	=	= %	#	# %	Eff
Romania	3	100%	0	0%	2	67%	67%
3 Filipas	1	33%	0	0%	1	100%	100%
16 Matei	1	33%	0	0%	1	100%	100%
17 Petromaneant	1	33%	0	0%	0	0%	0%
1 Vaida	0	0%	0	-	0	-	-
2 Iacob	0	0%	0	-	0	-	-
6 Rosca	0	0%	0	-	0	-	-
7 Dobra	0	0%	0	-	0	-	-

K2-Attacks - Transitor	Σ	Σ %	=	= %	#	# %	Eff
Romania	13	100%	3	23%	2	15%	-8%
10 Teanu	3	23%	1	33%	1	33%	0%
1 Vaida	2	15%	0	0%	0	0%	0%
3 Filipas	2	15%	0	0%	1	50%	50%
13 Rus	2	15%	2	100%	0	0%	-100%
16 Matei	2	15%	0	0%	0	0%	0%
17 Petromaneant	2	15%	0	0%	0	0%	0%
2 Iacob	0	0%	0	-	0	-	-

# Rotation 3

# Romania

Base K1 64 % (9) Base K2 0 % (0) Base K7 14 % (2) Base KD 21 % (3)



# Distribution

K1 after all R 21 5% 29% K1 after R#+ 13 23% 38% K2 Transition 16 19% 38%

Category	2	1	0	1	0	1	0	4	1	0
2	10%	5%	-	8%	-	8%	-	25%	6%	-
1	50%	0%	-	100%	-100%	0%	-	50%	0%	-
0	-	29%	57%	46%	38%	-	-	6%	63%	-
-	-	50%	17%	50%	20%	0%	30%	0%	40%	-

Reception	Σ	Σ %	=	= %	+	+ %	#	# %	+ # %	Eff
Romania	28	100%	1	4%	8	29%	7	25%	54%	50%
8 Molnar	11	39%	0	0%	2	18%	3	27%	45%	45%
1 Vaida	7	25%	1	14%	4	57%	1	14%	71%	57%
17 Petromaneant	7	25%	0	0%	1	14%	2	29%	43%	43%
16 Matei	3	11%	0	0%	1	33%	1	33%	67%	67%
2 Iacob	0	0%	0	-	0	-	0	-	-	-
3 Filipas	0	0%	0	-	0	-	0	-	-	-

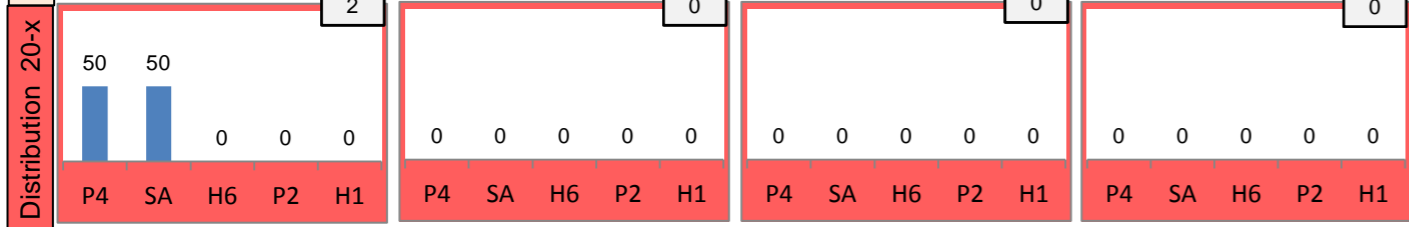
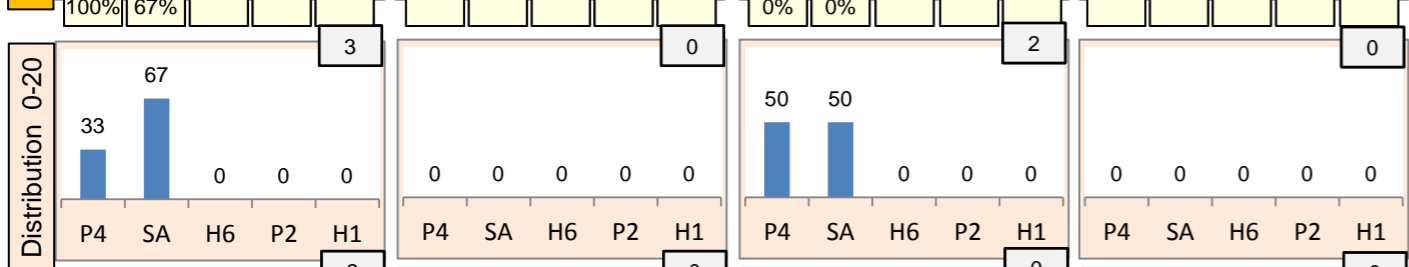
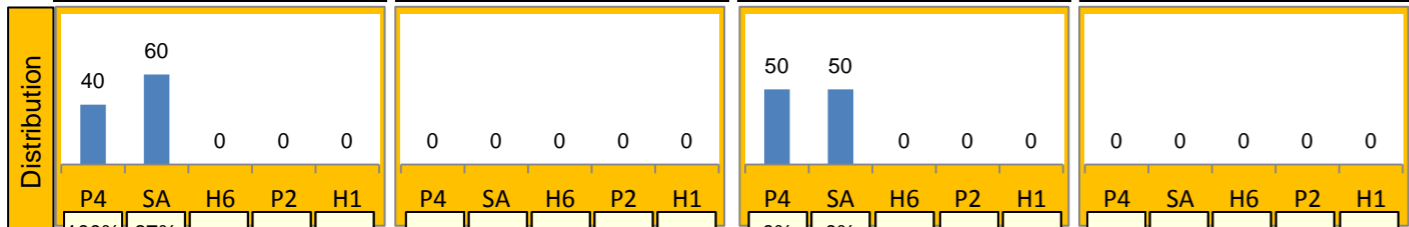
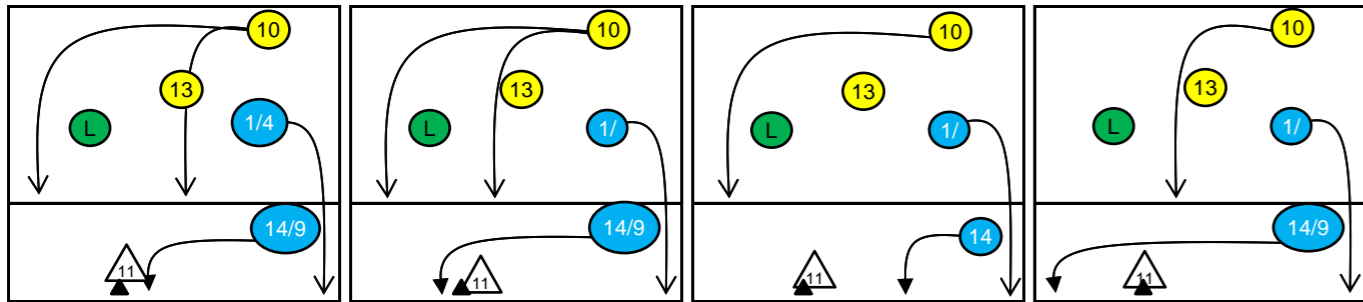
K1-Attacks after R#+	Σ	Σ %	=	= %	#	# %	Eff
Romania	13	100%	2	15%	5	38%	23%
3 Filipas	6	46%	1	17%	2	33%	17%
1 Vaida	3	23%	1	33%	1	33%	0%
13 Rus	2	15%	0	0%	0	0%	0%
9 Ursachi	1	8%	0	0%	1	100%	100%
10 Teanu	1	8%	0	0%	1	100%	100%
2 Iacob	0	0%	0	-	0	-	-
6 Rosca	0	0%	0	-	0	-	-

K2-Attacks - Transition	Σ	Σ %	=	= %	#	# %	Eff
Romania	16	100%	1	6%	6	38%	19%
1 Vaida	7	44%	0	0%	3	43%	43%
10 Teanu	3	19%	1	33%	1	33%	0%
13 Rus	2	13%	0	0%	1	50%	50%
17 Petromaneant	2	13%	0	0%	0	0%	-50%
3 Filipas	1	6%	0	0%	0	0%	-100%
6 Rosca	1	6%	0	0%	1	100%	100%
2 Iacob	0	0%	0	-	0	-	-

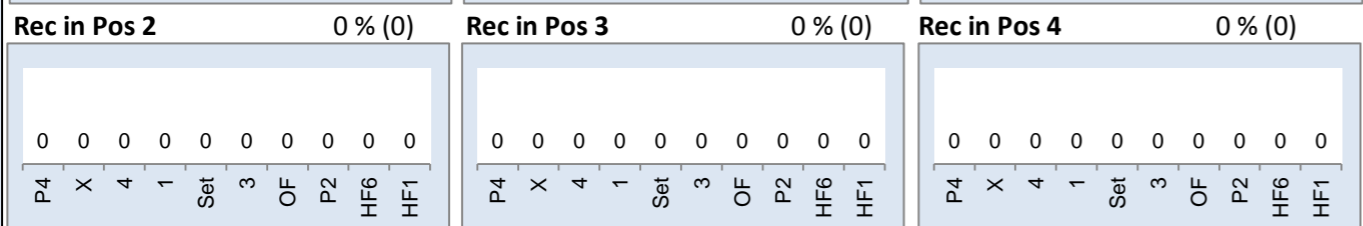
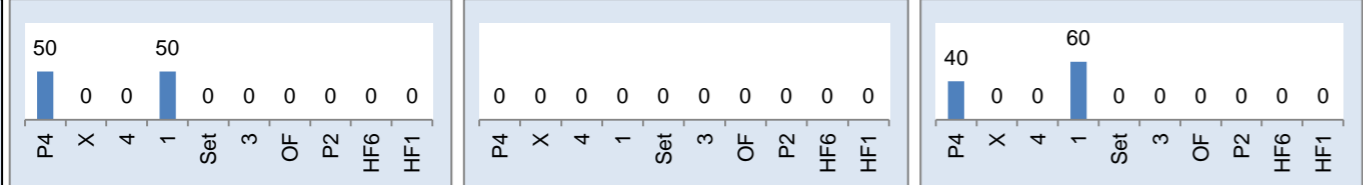
# Rotation 2

# Romania

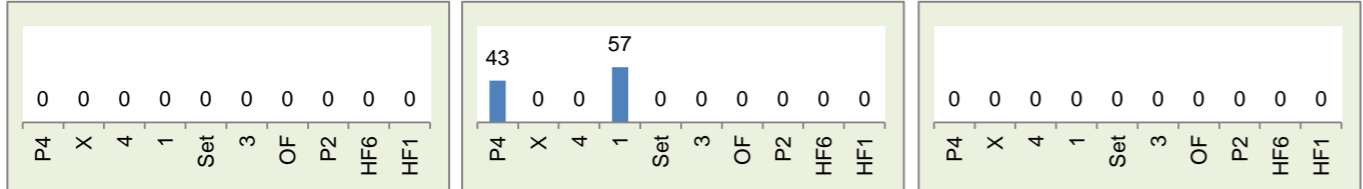
Base K1 71% (5) Base K2 0% (0) Base K7 29% (2) Base KD 0% (0)



Rec in Pos 1 29% (2) Rec in Pos 6 0% (0) Rec in Pos 5 71% (5)



Settermovement to 4 0 Settermovement to 3 7 Settermovement to 2 0



# Distribution

K1 after all R 14 43% 50% K1 after R#+ 7 57% 57% K2 Transition 11 9% 45%

Category	0	-	3	21%	0	-
K1 after all R	0	-	3	21%	0	-
K1 after R#+	0	-	0	-	0	-
K2 Transition	2	18%	0	-	0	-

**Reception**

	Σ	Σ %	=/	=/ %	+	+ %	#	# %	+# %	Eff
Romania	25	100%	6	24%	5	20%	2	8%	28%	4%
1 Vaida	12	48%	3	25%	4	33%	1	8%	42%	17%
13 Rus	5	20%	2	40%	0	0%	0	0%	0%	-40%
16 Matei	3	12%	0	0%	0	0%	0	0%	0%	0%
17 Petromaneant	3	12%	1	33%	0	0%	0	0%	0%	-33%
8 Molnar	2	8%	0	0%	1	50%	1	50%	100%	100%
2 Iacob	0	0%	0	-	0	-	0	-	-	-

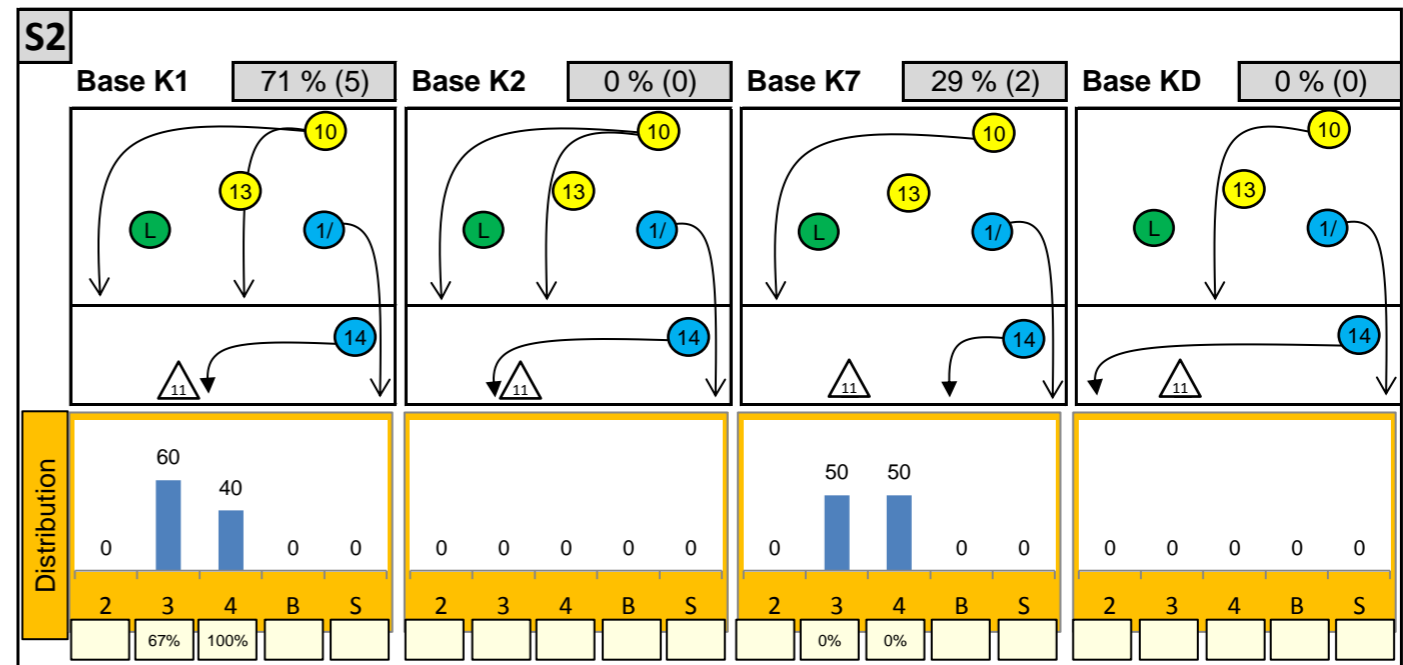
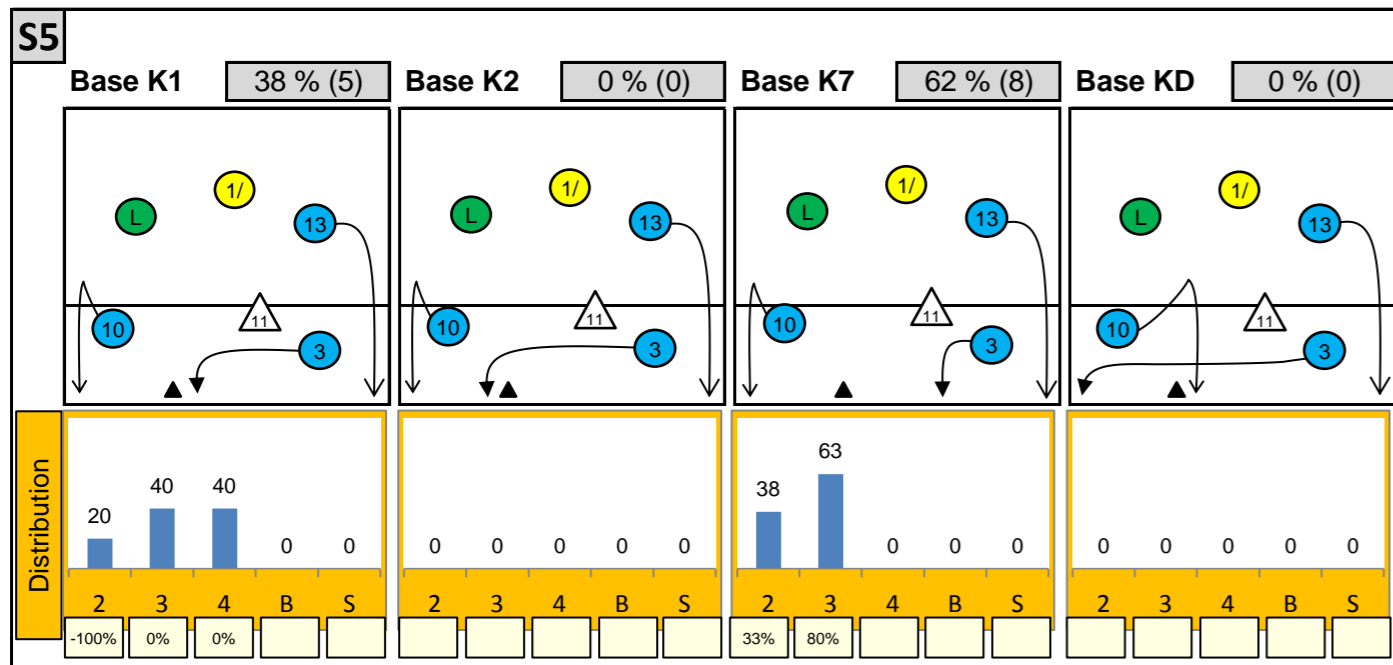
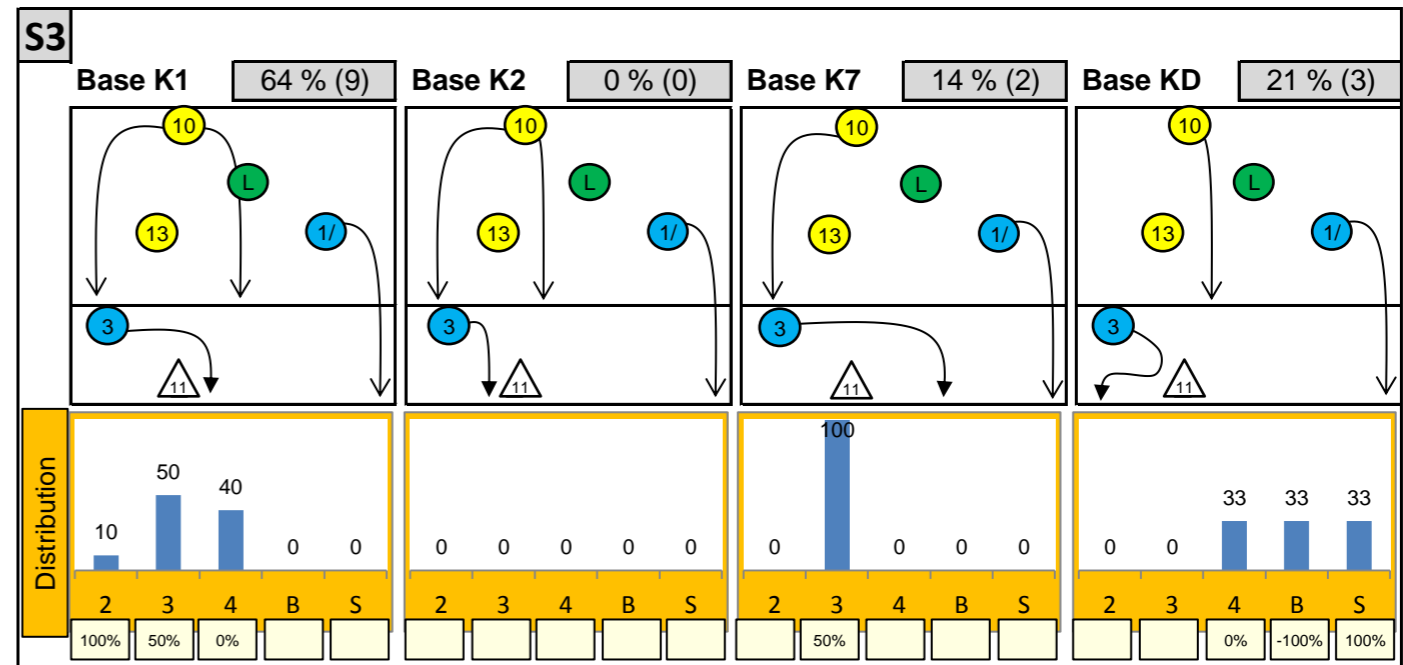
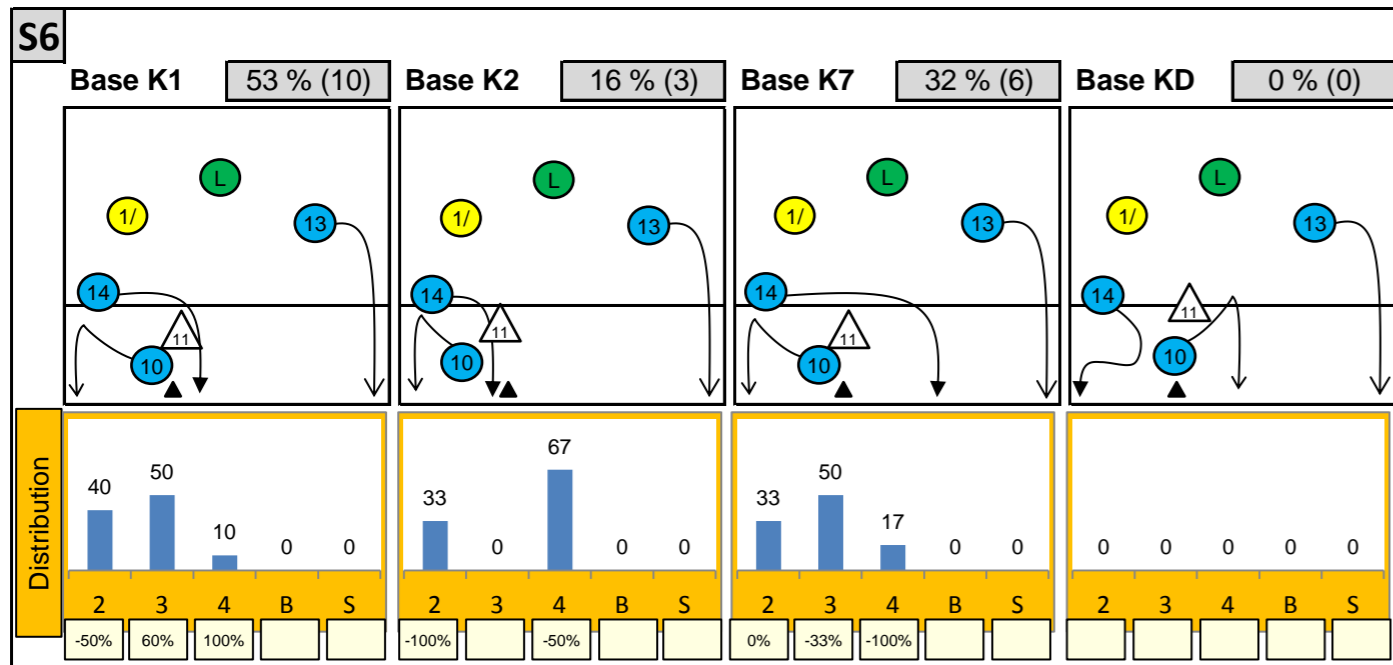
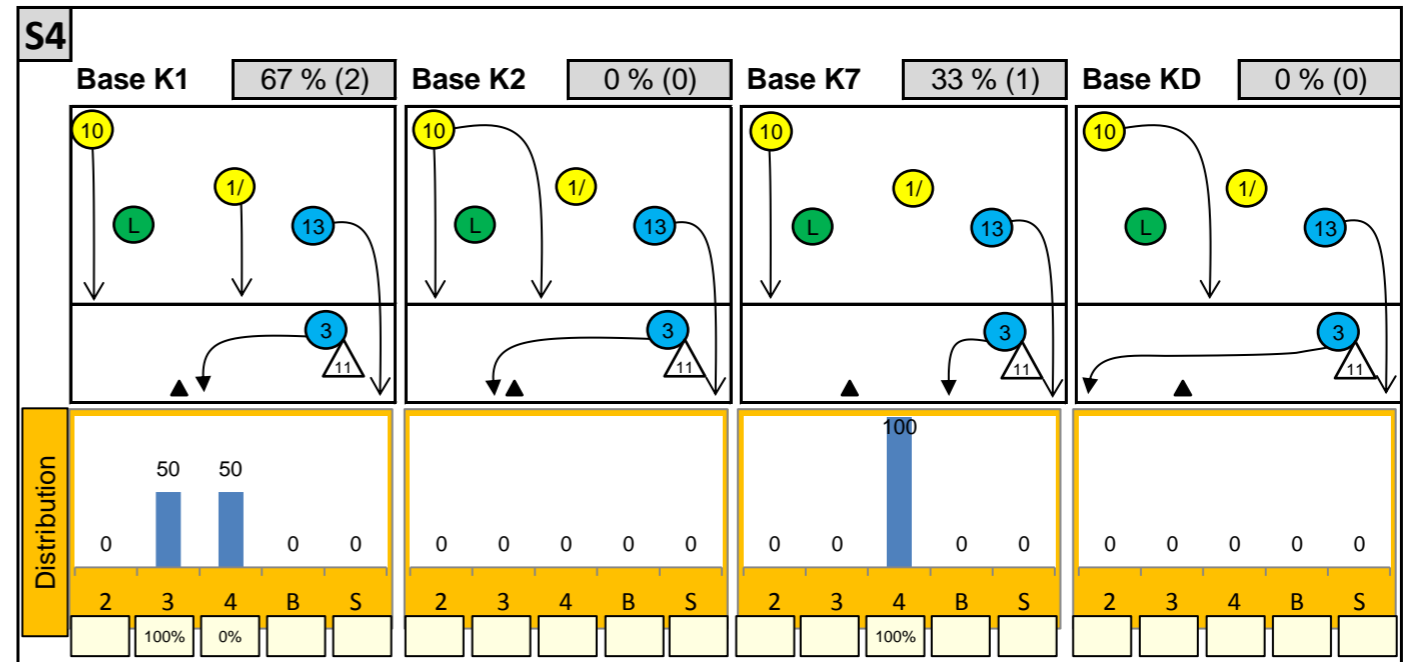
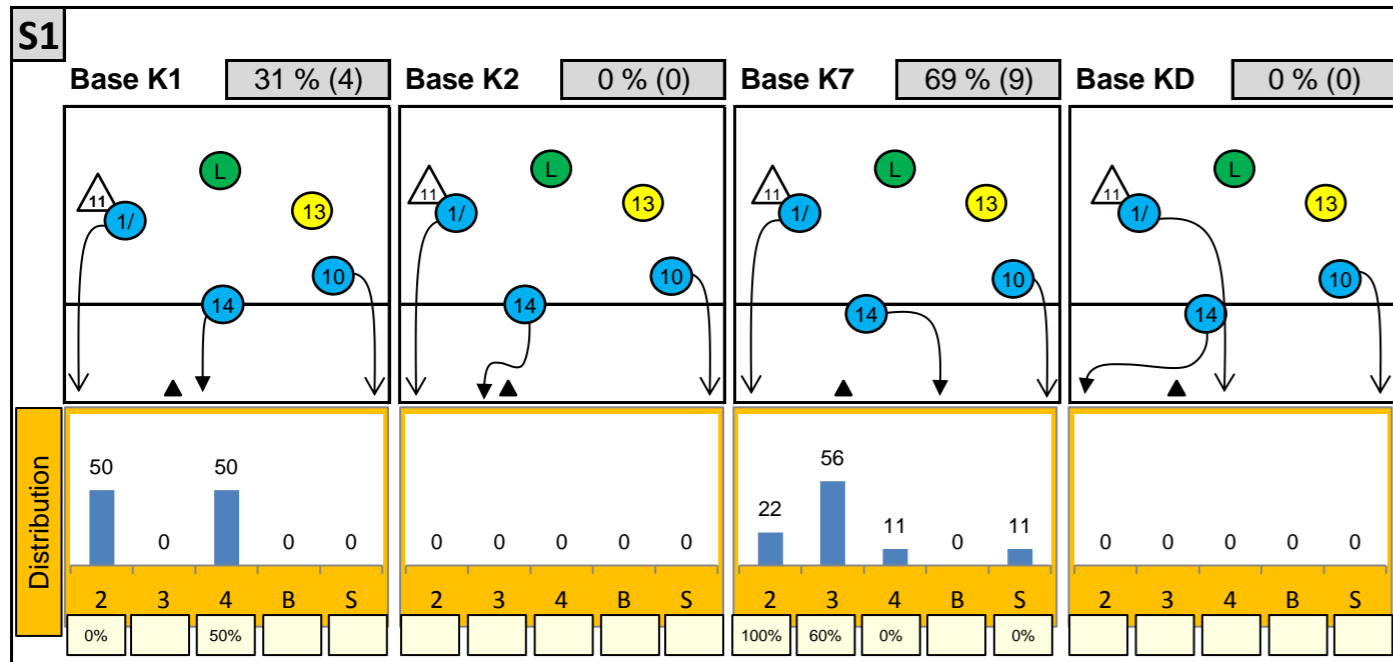
**K1-Attacks after R#+**

	Σ	Σ %	=	= %	#	# %	Eff
Romania	7	100%	0	0%	4	57%	57%
1 Vaida	3	43%	0	0%	2	67%	67%
14 Marin	3	43%	0	0%	1	33%	33%
9 Ursachi	1	14%	0	0%	1	100%	100%
2 Iacob	0	0%	0	-	0	-	-
3 Filipas	0	0%	0	-	0	-	-
6 Rosca	0	0%	0	-	0	-	-
7 Dobra	0	0%	0	-	0	-	-

**K2-Attacks - Transitor**

	Σ	Σ %	=	= %	#	# %	Eff
Romania	11	100%	0	0%	5	45%	9%
1 Vaida	6	55%	0	0%	3	50%	17%
10 Teanu	3	27%	0	0%	1	33%	0%
14 Marin	2	18%	0	0%	1	50%	0%
2 Iacob	0	0%	0	-	0	-	-
3 Filipas	0	0%	0	-	0	-	-
6 Rosca	0	0%	0	-	0	-	-
7 Dobra	0	0%	0	-	0	-	-

# Attackdistribution depending on Settercalls - Romania



2: Attack of Opposite

3: Attack of Middleblocker

4: Attack of Outside

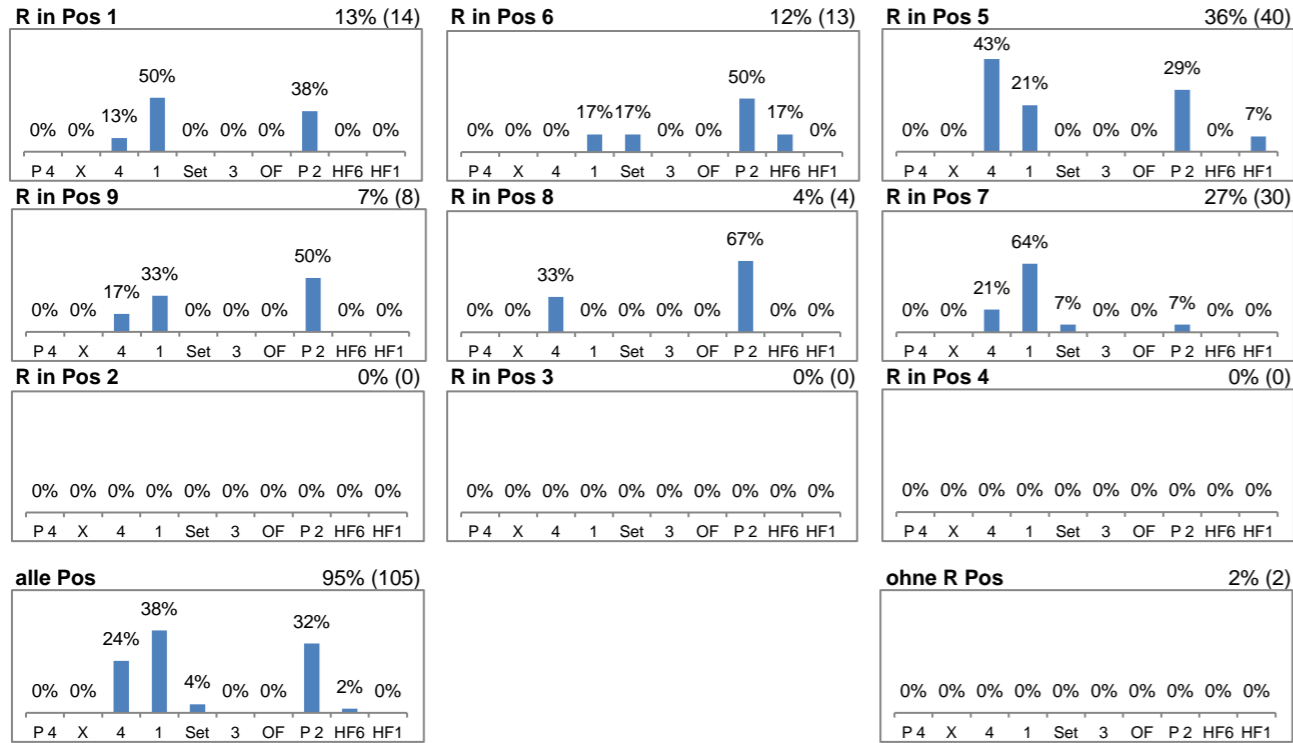
B: Attack of Backrow

S: Attack of Setter

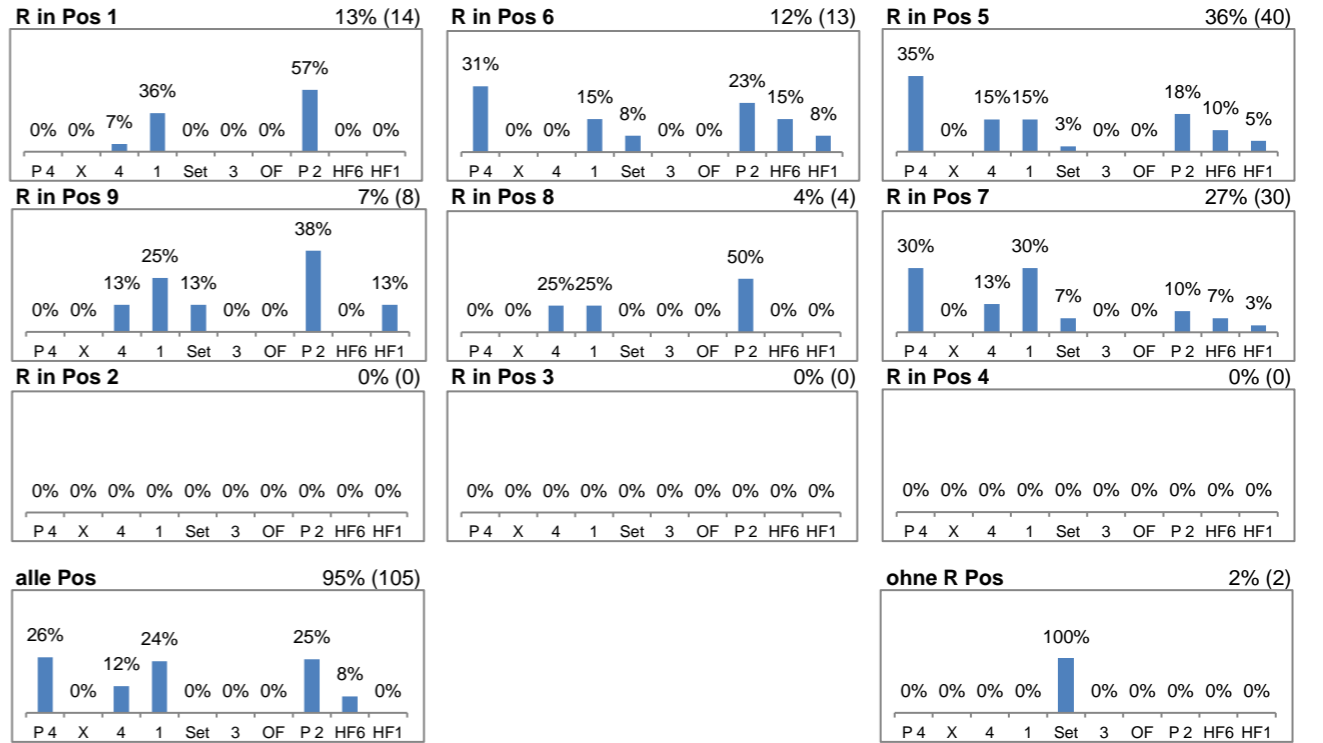
xx%: Efficiency of Attacks (-100% to +100%)

# Attacks depending on Reception Position - Romania

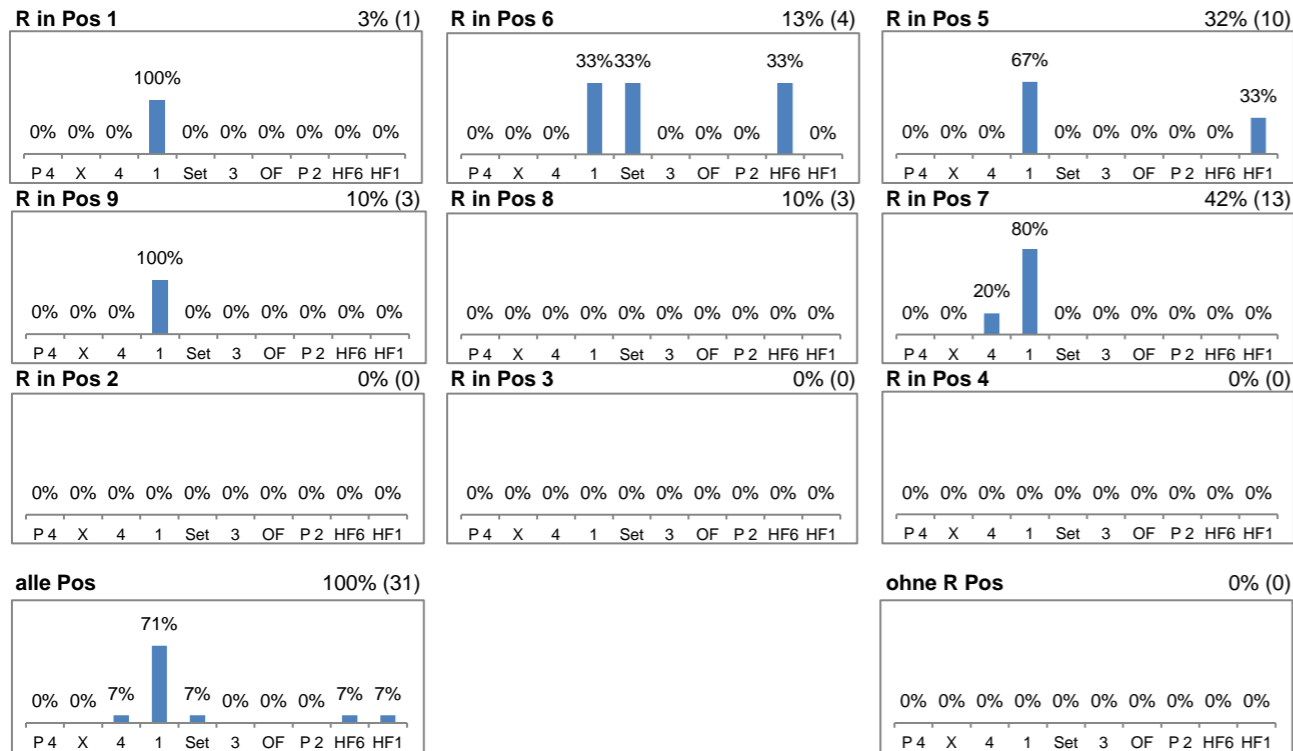
## Setter back (S1, S6, S5) - R#+



## Setter back (S1, S6, S5) - all Receptions



## Setter front (S4, S3, S2) - R#+



## Setter front (S4, S3, S2) - all Receptions

