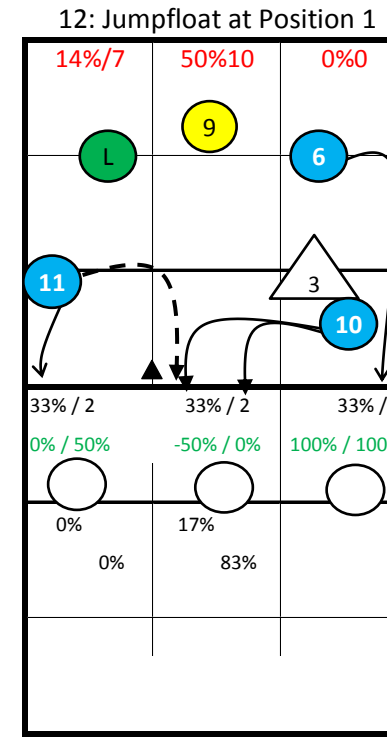
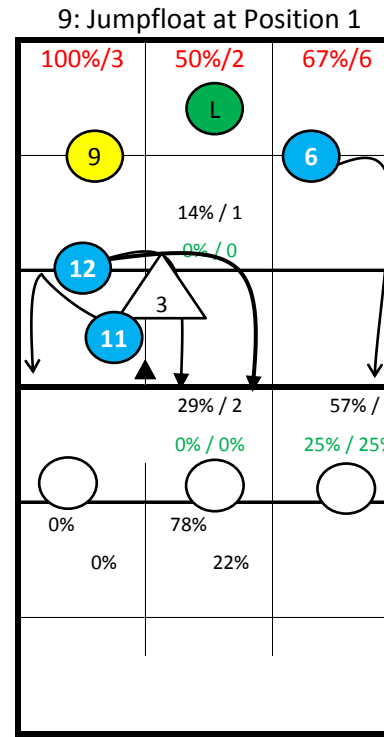
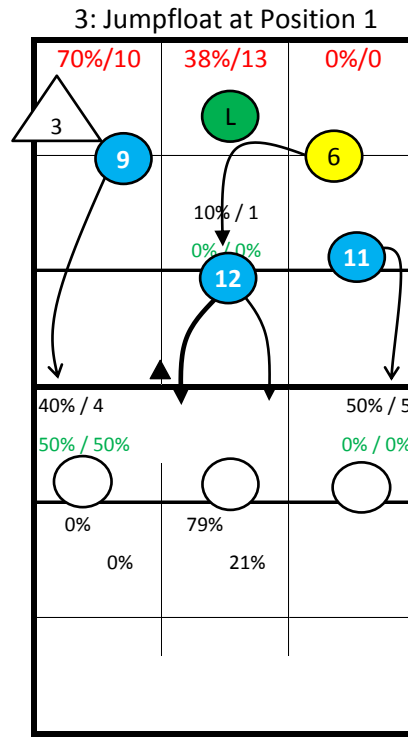


Roster

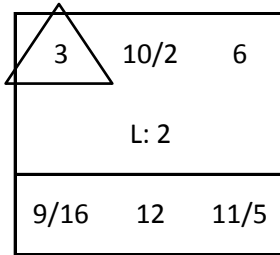
- | | |
|--------------------|------------|
| 1 Arsenijevic | Lib |
| 2 Berger | Set |
| 3 Schmitt | MB |
| 4 Peischl | Opp |
| 5 Bruckmoser | Out |
| 6 Holzer | Out |
| 9 Chrtianska | Out |
| 10 Brötzner | MB |
| 11 Maros | Opp |
| 12 Nesimovic | MB |
| 13 Jenner | Lib |
| 14 Grebien | Set |
| 16 Markovic | Out |

Austria96_EM -

#N/A

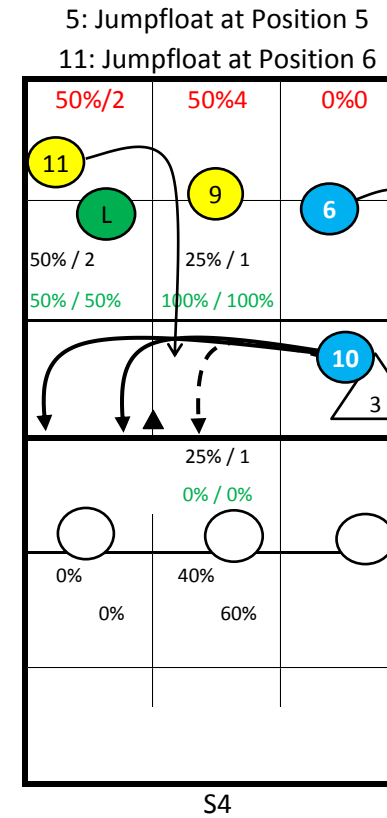
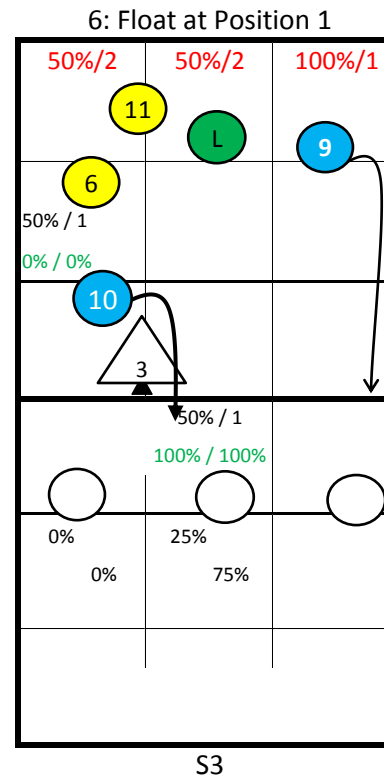
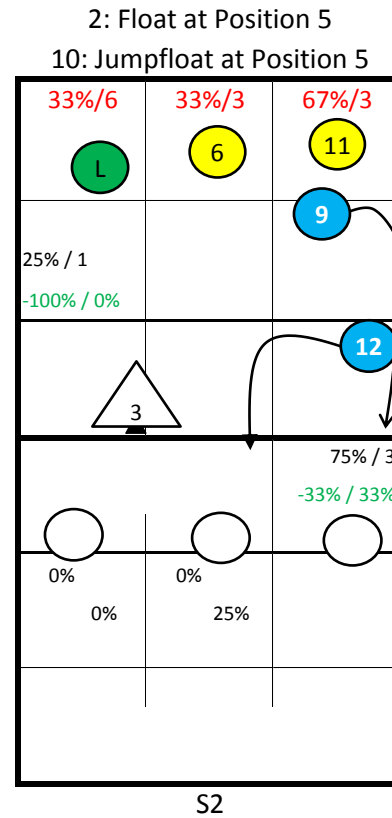


Starting Lineup:



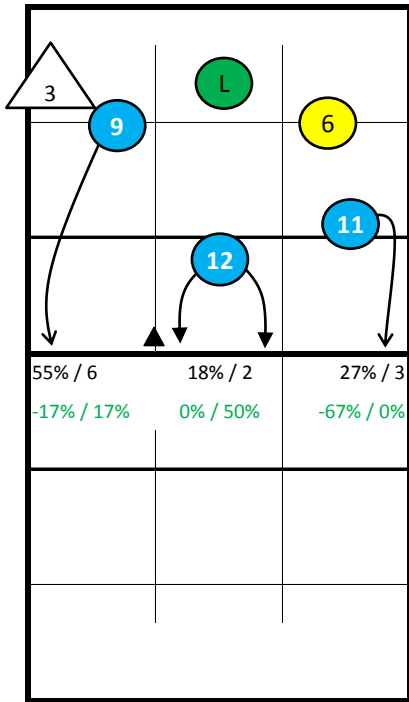
Rotation:

Ser: S1
Rec: S1

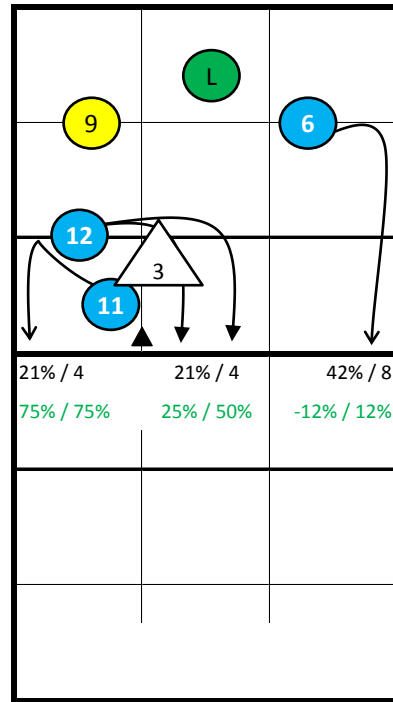


Notes:

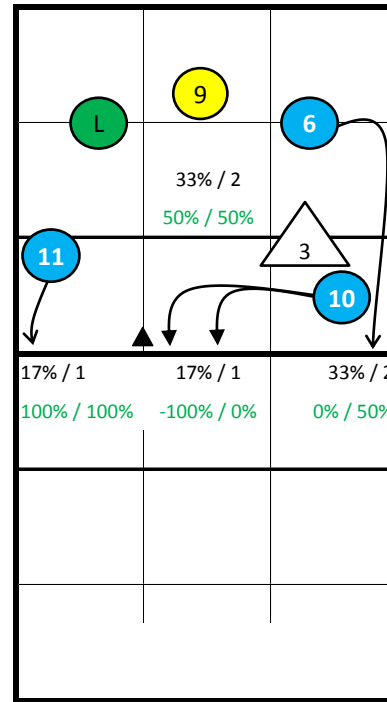
Austria96_EM -



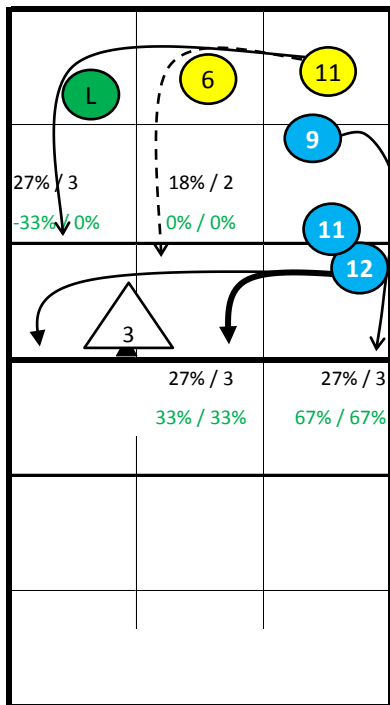
S1



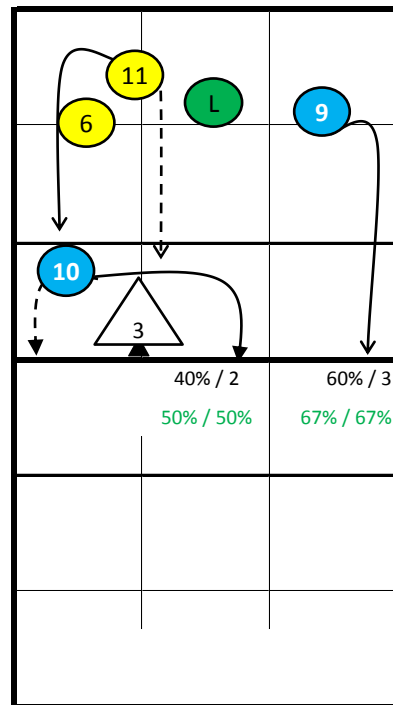
S6



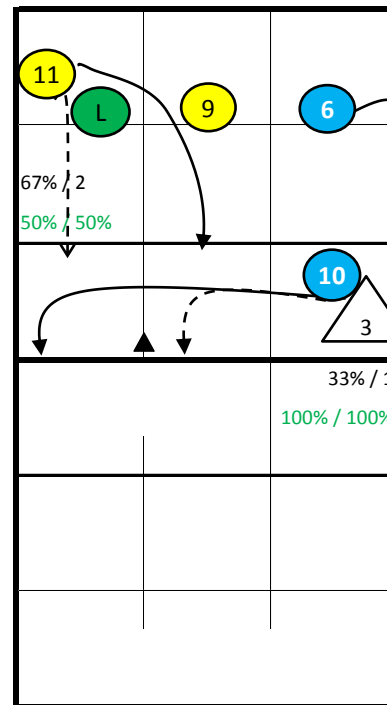
S5



S2



S3



S4

Notes:

Austria96_EM - all Statistics

pld	Points					Serve								Reception										Attack											
	Set	pts	P/s	easy=	all=	W-L	Σ	=	-	+	#	=%	#%	eff%	Σ	in %	=	/	-	+	#	=/%	+#%	#%	eff%	Σ	in %	=	/	!	+	#	=/%	#%	eff%
Austria96_EM	5	68	13,6	37	94	-26	95	15	40	32	8	16%	8%	42%	93		5	0	44	19	25	5%	47%	27%	42%	146		15	11	13	29	49	18%	34%	16%
1 Arsenijevic	0	0				0	0							0											0										
2 Berger	5	0			11	-11	0							32	34%	1	0	20	4	7	3%	34%	22%	31%	0										
3 Schmitt	5	3	0,6	3	6	-3	14	0	8	4	2	0%	14%	43%	0										2	1%	0	0	0	0	1	0%	50%	50%	
4 Peischl	1	0			1	-1	0							0											1	1%	0	0	0	1	0	0%	0%	0%	
5 Bruckmoser	3	1	0,3	2	3	-2	6	2	3	1	0	33%	0%	17%	0										4	3%	0	0	1	0	1	0%	25%	25%	
6 Holzer	5	14	2,8	3	11	3	11	1	6	4	0	9%	0%	36%	11	12%	1	0	4	2	4	9%	54%	36%	45%	38	26%	2	3	1	11	13	13%	34%	21%
9 Chrtianska	5	15	3,0	4	11	4	21	2	6	9	4	10%	19%	62%	31	33%	0	0	11	10	10	0%	64%	32%	65%	34	23%	2	3	3	7	11	15%	32%	18%
10 Brötzner	5	5	1,0	4	7	-2	12	3	5	4	0	25%	0%	33%	0										8	5%	1	1	1	0	2	25%	25%	0%	
11 Maros	5	12	2,4	10	19	-7	12	3	4	5	0	25%	0%	42%	0										33	23%	7	2	2	7	9	27%	27%	0%	
12 Nesimovic	5	10	2,0	6	14	-4	14	2	7	3	2	14%	14%	36%	0										9	6%	1	1	1	1	5	22%	56%	33%	
13 Jenner	1	0			2	-2	0							4	4%	1	0	2	0	1	25%	25%	25%	0%	0										
14 Grebien	2	2	1,0	1	1	1	2	0	1	1	0	0%	0%	50%	0										3	2%	0	0	1	0	2	0%	67%	67%	
16 Markovic	2	6	3,0	4	8	-2	3	2	0	1	0	67%	0%	33%	15	16%	2	0	7	3	3	13%	40%	20%	27%	14	10%	2	1	3	2	5	21%	36%	14%

pld	Block						Defense						Freeball					Set		
	Set	Σ	=	+	#	#%	eff%	Σ	=	/-!	+#	+#%	eff%	Σ	err	bad	god	eff%	Σ	=
Austria96_EM	46	20	0	11	24%	-20%	101	25	42	34	34%	37%	18	1	17	0	-6%	88	2	70%
1 Arsenijevic	0						0						0					0		
2 Berger	0						34	10	16	8	24%	24%	1	0	1	0	0%	7	0	29%
3 Schmitt	1	0	0	0	0%	0%	11	3	5	3	27%	27%	5	1	4	0	-20%	57	2	82%
4 Peischl	1	1	0	0	0%	-100%	0						0					0		
5 Bruckmoser	0						5	1	2	2	40%	40%	0					0		
6 Holzer	6	3	0	1	17%	-33%	7	1	2	4	57%	57%	3	0	3	0	0%	2	0	0%
9 Chrtianska	5	3	0	0	0%	-60%	13	1	3	9	69%	77%	5	0	5	0	0%	1	0	0%
10 Brötzner	4	1	0	3	75%	50%	4	1	2	1	25%	50%	0					2	0	0%
11 Maros	9	3	0	3	33%	0%	14	4	8	2	14%	21%	2	0	2	0	0%	3	0	0%
12 Nesimovic	16	7	0	3	19%	-25%	5	3	2	0	0%	0%	1	0	1	0	0%	4	0	50%
13 Jenner	0						1	1	0	0	0%	0%	0					0		
14 Grebien	1	1	0	0	0%	-100%	1	0	0	1	100%	100%	1	0	1	0	0%	11	0	100%
16 Markovic	3	1	0	1	33%	0%	6	0	2	4	67%	67%	0					1	0	0%

pld Set played Sets
 P/s Points per Set
 pts Points
 easy= easy errors (serve, net contact, ...)
 all= all errors
 W-L points - errors
 Σ sum of all events
 in % in percent of all team events

Austria96_EM - Attack-Statistic

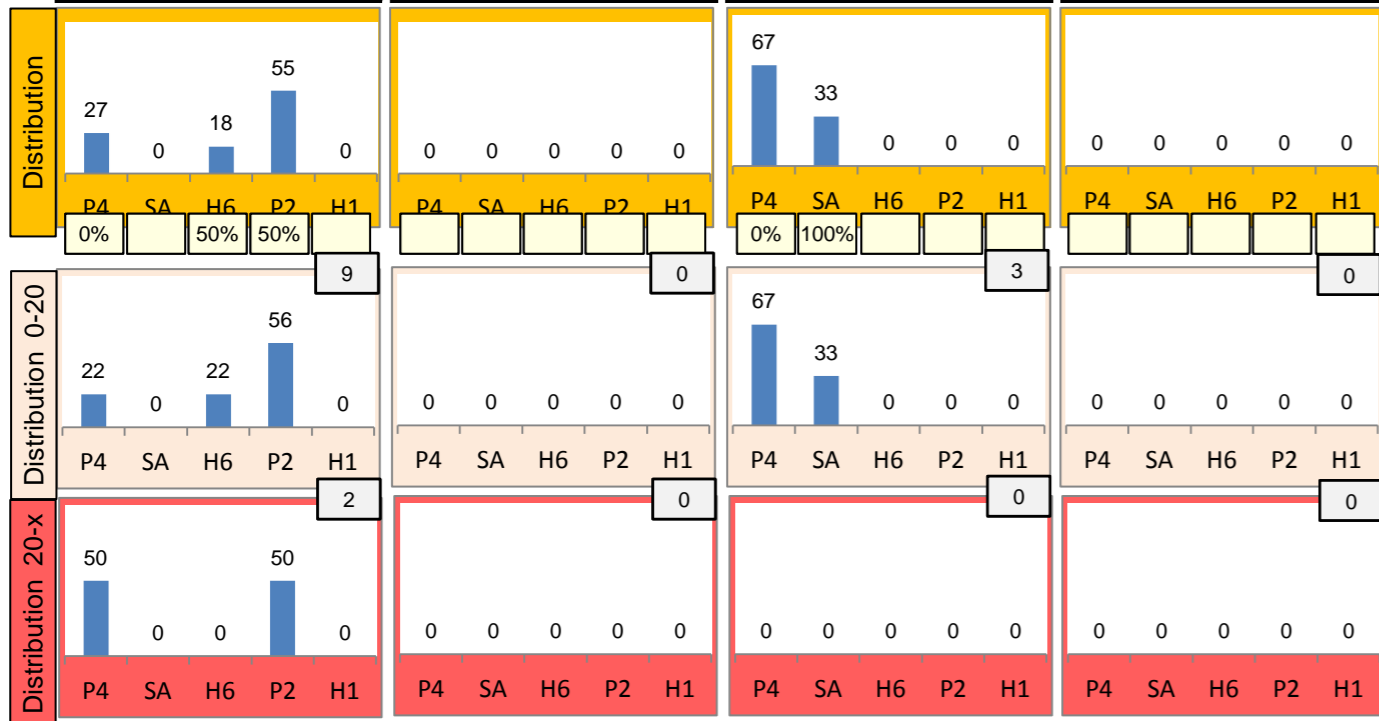
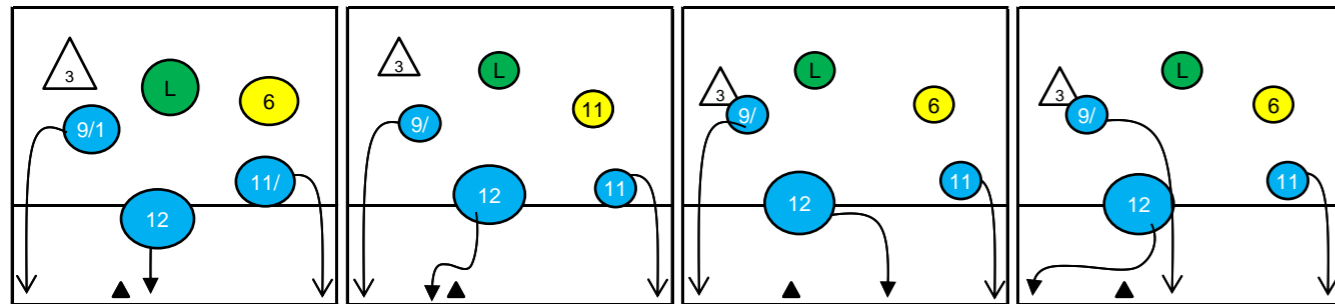
	K1 & K2 Attacks								K1 All Attacks								K2 Attacks								K1 aft R other Ply				K1 after own Rec			
	Σ	in %	=	/	#	=/%	#%	eff	Σ	in %	=	/	#	=/%	#%	eff	Σ	in %	=	/	#	=/%	#%	eff	sum	#	#%	eff	sum	#	#%	eff
Austria96_EM	132		14	10	44	18%	33%	15%	74		9	5	24	19%	32%	14%	58		5	5	20	17%	34%	17%	61	20	33%		13	4	31%	
6 Holzer	35	27%	2	3	13	14%	37%	23%	20	27%	2	0	8	10%	40%	30%	15	26%	0	3	5	20%	33%	13%	16	6	38%	25%	4	2	50%	50%
11 Maros	33	25%	7	2	9	27%	27%	0%	21	28%	4	2	4	29%	19%	-10%	12	21%	3	0	5	25%	42%	17%	21	4	19%	-10%	0			
9 Chrtianska	32	24%	2	3	10	16%	31%	16%	16	22%	0	3	4	19%	25%	6%	16	28%	2	0	6	13%	38%	25%	9	3	33%	22%	7	1	14%	-14%
16 Markovic	14	11%	2	1	5	21%	36%	14%	8	11%	2	0	4	25%	50%	25%	6	10%	0	1	1	17%	17%	0%	6	3	50%	17%	2	1	50%	50%
10 Brötzner	7	5%	1	0	2	14%	29%	14%	4	5%	1	0	1	25%	25%	0%	3	5%	0	0	1	0%	33%	33%	4	1	25%	0%	0			
12 Nesimovic	6	5%	0	1	4	17%	67%	50%	4	5%	0	0	3	0%	75%	75%	2	3%	0	1	1	50%	50%	0%	4	3	75%	75%	0			
5 Bruckmoser	4	3%	0	0	1	0%	25%	25%	0								4	7%	0	0	1	0%	25%	25%	0				0			
4 Peischl	1	1%	0	0	0	0%	0%	0%	1	1%	0	0	0	0%	0%	0%	0								1	0	0%	0%	0			
1 Arsenijevic	0								0								0								0				0			
2 Berger	0								0								0								0				0			
3 Schmitt	0								0								0								0				0			
13 Jenner	0								0								0								0				0			
14 Grebien	0								0								0								0				0			

	K1 after R#+								K1 after R-!								Freeball-Attacks							
	Σ	in %	=	/	#	=/%	#%	eff	Σ	in %	=	/	#	=/%	#%	eff	Σ	in %	=	/	#	=/%	#%	eff
Austria96_EM	43		1	4	17	12%	40%	28%	31		8	1	7	29%	23%	-6%	14		0	1	9	7%	64%	57%
6 Holzer	8	19%	0	0	5	0%	62%	62%	12	39%	2	0	3	17%	25%	8%	3	300%	0	1	1	33%	33%	0%
11 Maros	11	26%	0	2	2	18%	18%	0%	10	32%	4	0	2	40%	20%	-20%	3	100%	0	0	3	0%	100%	100%
9 Chrtianska	12	28%	0	2	3	17%	25%	8%	4	13%	0	1	1	25%	25%	0%	3	100%	0	0	3	0%	100%	100%
16 Markovic	3	7%	0	0	3	0%	100%	100%	5	16%	2	0	1	40%	20%	-20%	1	0	0	0	0	0%	0%	0%
10 Brötzner	4	9%	1	0	1	25%	25%	0%	0								3	300%	0	0	1	0%	33%	33%
12 Nesimovic	4	9%	0	0	3	0%	75%	75%	0								1	100%	0	0	1	0%	100%	100%
5 Bruckmoser	0								0								0							
4 Peischl	1	2%	0	0	0	0%	0%	0%	0								0							
1 Arsenijevic	0								0								0							
2 Berger	0								0								0							
3 Schmitt	0								0								0							
13 Jenner	0								0								0							
14 Grebien	0								0								0							

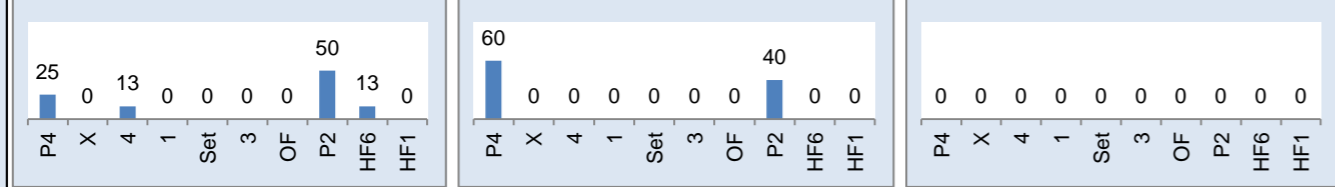
Rotation 1

Austria96_EM

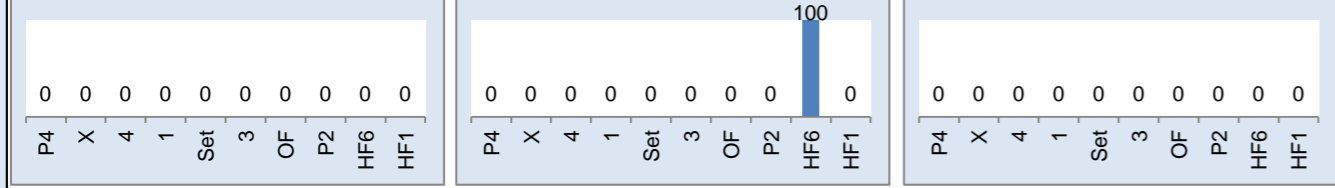
Base K1 79% (11) Base K2 0% (0) Base K7 21% (3) Base KD 0% (0)



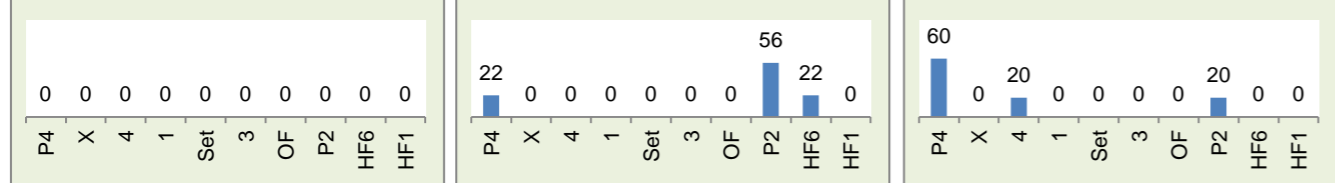
Rec in Pos 1 57% (8) Rec in Pos 6 36% (5) Rec in Pos 5 0% (0)



Rec in Pos 2 0% (0) Rec in Pos 3 7% (1) Rec in Pos 4 0% (0)



Settermovement to 4 0 Settermovement to 3 9 Settermovement to 2 5



Distribution

K1 after all R 28 14% 29% K1 after R#+ 14 36% 36% K2 Transition 11 -18% 18%

Category	0	-	6	21%	0	-
Base K1	0	-	6	21%	0	-
Base K2	-	-	17%	33%	-	-
Base K7	8	29%	1	4%	13	46%
Base KD	25%	38%	100%	100%	0%	15%

Reception	Σ	Σ %	=/	=/ %	+	+ %	#	# %	+# %	Eff
Austria96_EM	32	100%	2	6%	7	22%	7	22%	44%	38%
2 Berger	13	41%	1	8%	2	15%	3	23%	38%	31%
9 Chrtianska	10	31%	0	0%	3	30%	4	40%	70%	70%
16 Markovic	7	22%	1	14%	2	29%	0	0%	29%	14%
13 Jenner	2	6%	0	0%	0	0%	0	0%	0%	0%
1 Arsenijevic	0	0%	0	-	0	-	0	-	-	-
3 Schmitt	0	0%	0	-	0	-	0	-	-	-

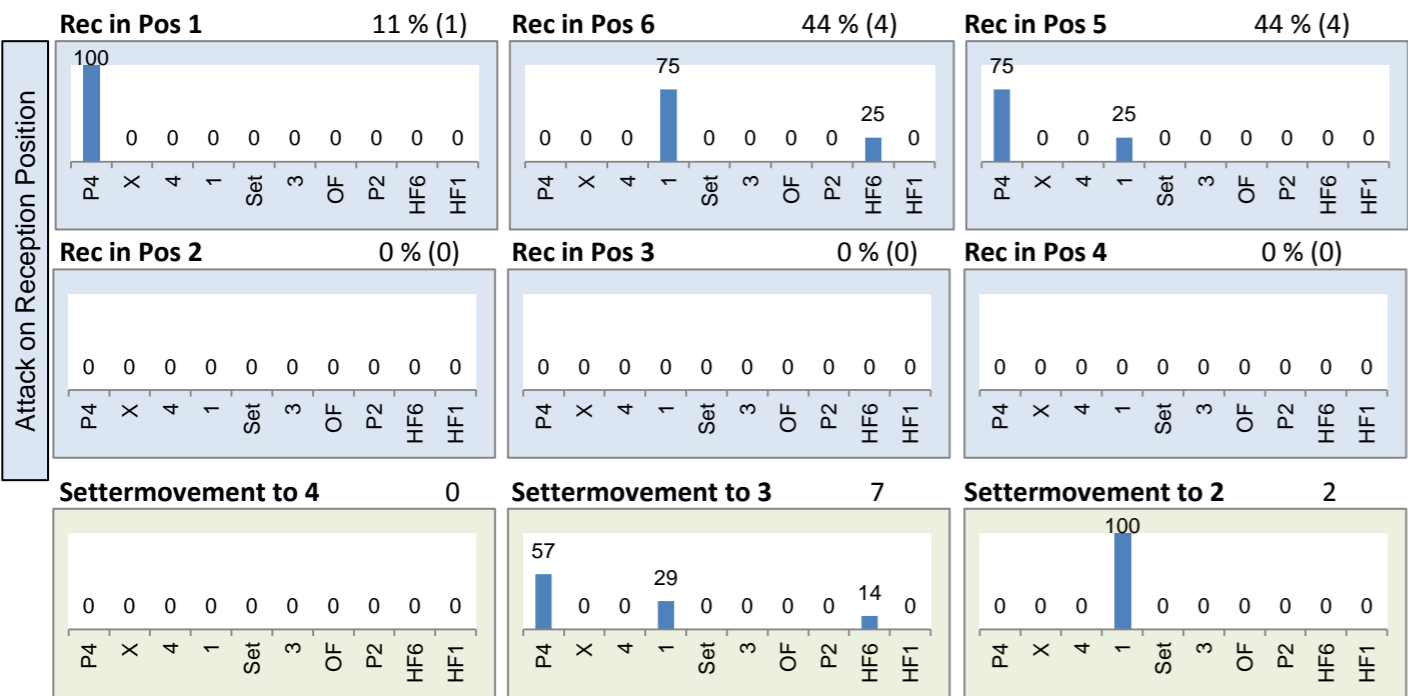
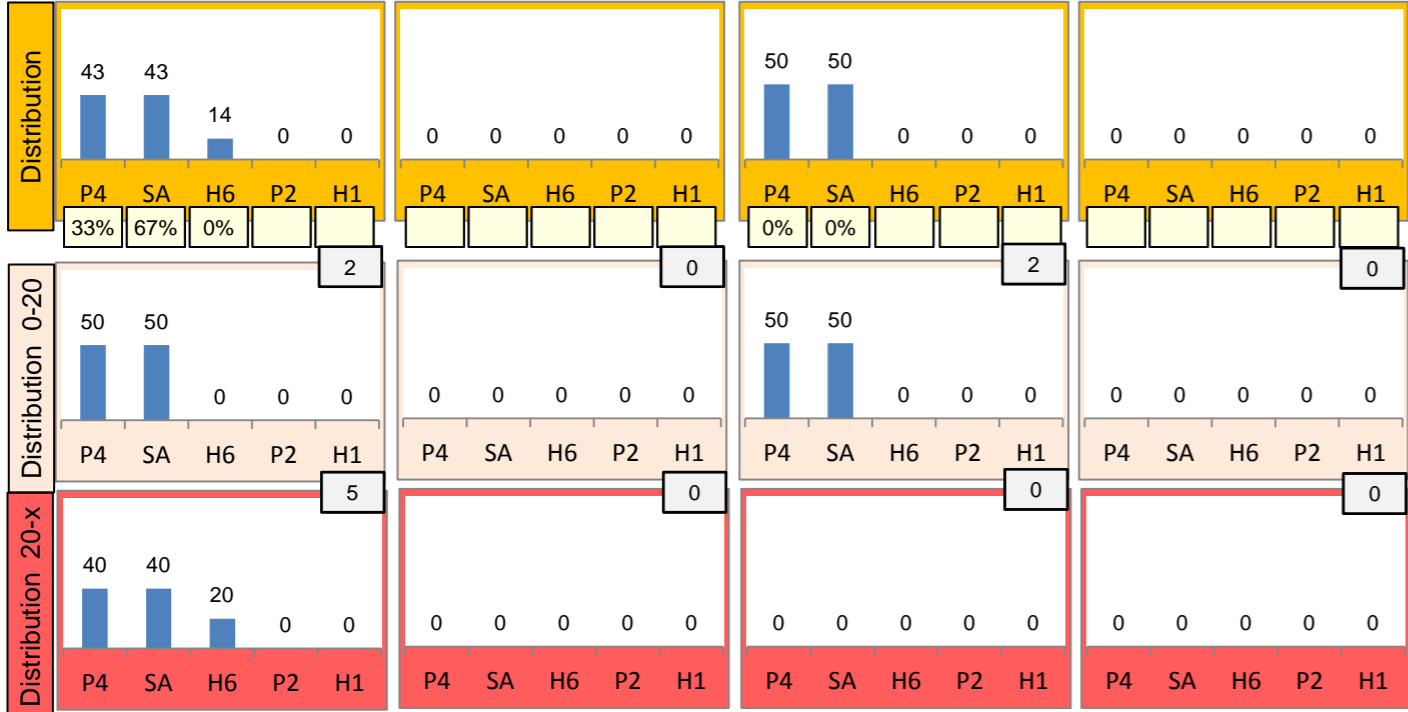
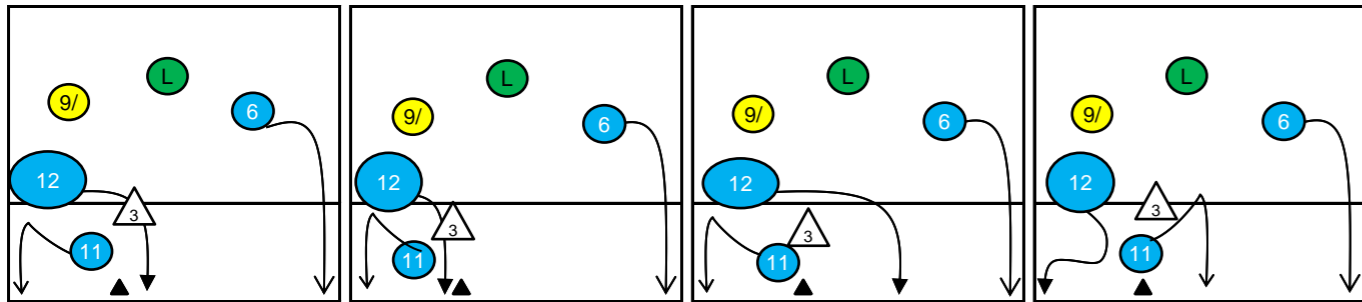
K1-Attacks after R#+	Σ	Σ %	=	= %	#	# %	Eff
Austria96_EM	14	100%	0	0%	5	36%	36%
9 Chrtianska	5	36%	0	0%	1	20%	20%
11 Maros	5	36%	0	0%	0	0%	0%
16 Markovic	2	14%	0	0%	2	100%	100%
6 Holzer	1	7%	0	0%	1	100%	100%
12 Nesimovic	1	7%	0	0%	1	100%	100%
1 Arsenijevic	0	0%	0	-	0	-	-
2 Berger	0	0%	0	-	0	-	-

K2-Attacks - Transition	Σ	Σ %	=	= %	#	# %	Eff
Austria96_EM	11	100%	3	27%	2	18%	-18%
11 Maros	4	36%	2	50%	1	25%	-25%
9 Chrtianska	3	27%	1	33%	1	33%	0%
16 Markovic	3	27%	0	0%	0	0%	-33%
5 Bruckmoser	1	9%	0	0%	0	0%	0%
1 Arsenijevic	0	0%	0	-	0	-	-
2 Berger	0	0%	0	-	0	-	-
3 Schmitt	0	0%	0	-	0	-	-

Rotation 6

Austria96_EM

Base K1 78 % (7) Base K2 0 % (0) Base K7 22 % (2) Base KD 0 % (0)



Distribution

K1 after all R 12 25% 33% K1 after R#+ 9 33% 33% K2 Transition 19 21% 37%

Category	Value	%	Value	%
0	-	1 8%	0	-
-	-	0% 0%	-	-
1	8%	4 33%	6	50%
-100%	0%	50% 50%	33% 33%	

Reception	Σ	Σ %	=/	=/ %	+	+ %	#	# %	+ # %	Eff
Austria96_EM	16	100%	2	13%	1	6%	9	56%	63%	50%
6 Holzer	6	38%	1	17%	1	17%	3	50%	67%	50%
16 Markovic	5	31%	1	20%	0	0%	2	40%	40%	20%
9 Chrtianska	3	19%	0	0%	0	0%	3	100%	100%	100%
2 Berger	2	13%	0	0%	0	0%	1	50%	50%	50%
1 Arsenijevic	0	0%	0	-	0	-	0	-	-	-
3 Schmitt	0	0%	0	-	0	-	0	-	-	-

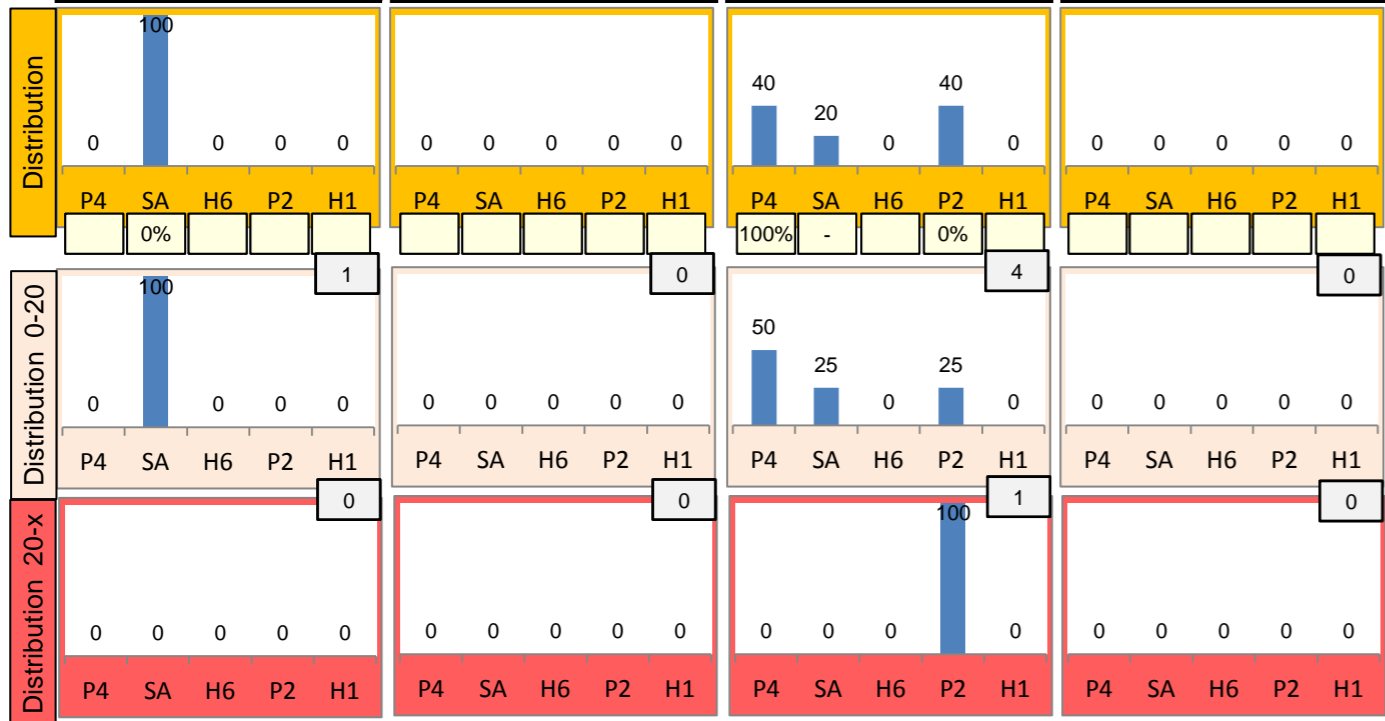
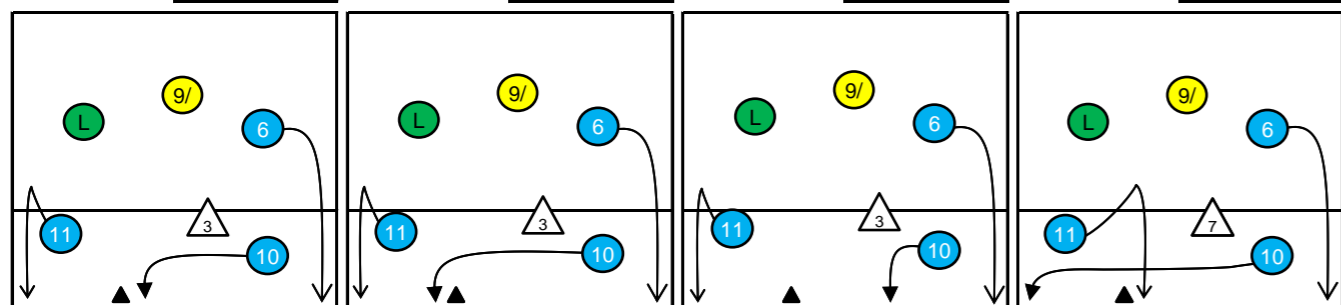
K1-Attacks after R#+	Σ	Σ %	=	= %	#	# %	Eff
Austria96_EM	9	100%	0	0%	3	33%	33%
6 Holzer	4	44%	0	0%	1	25%	25%
12 Nesimovic	3	33%	0	0%	2	67%	67%
4 Peischl	1	11%	0	0%	0	0%	0%
9 Chrtianska	1	11%	0	0%	0	0%	0%
1 Arsenijevic	0	0%	0	-	0	-	-
2 Berger	0	0%	0	-	0	-	-
3 Schmitt	0	0%	0	-	0	-	-

K2-Attacks - Transitor	Σ	Σ %	=	= %	#	# %	Eff
Austria96_EM	19	100%	1	5%	7	37%	21%
6 Holzer	7	37%	0	0%	2	29%	14%
9 Chrtianska	5	26%	1	20%	1	20%	0%
11 Maros	4	21%	0	0%	3	75%	75%
12 Nesimovic	2	11%	0	0%	1	50%	0%
16 Markovic	1	5%	0	0%	0	0%	0%
1 Arsenijevic	0	0%	0	-	0	-	-
2 Berger	0	0%	0	-	0	-	-

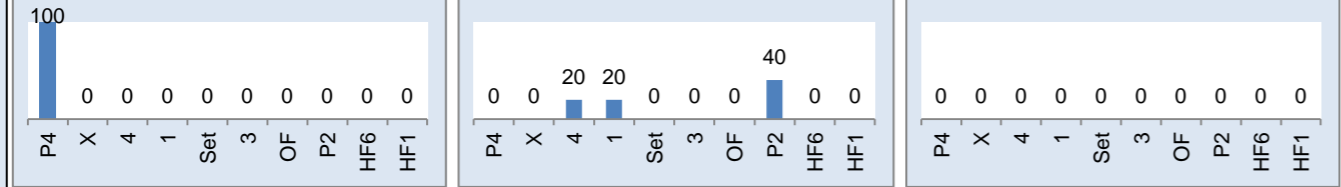
Rotation 5

Austria96_EM

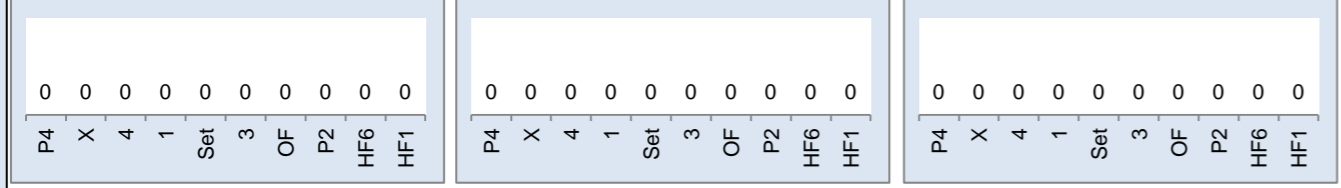
Base K1 17% (1) Base K2 0% (0) Base K7 83% (5) Base KD 0% (0)



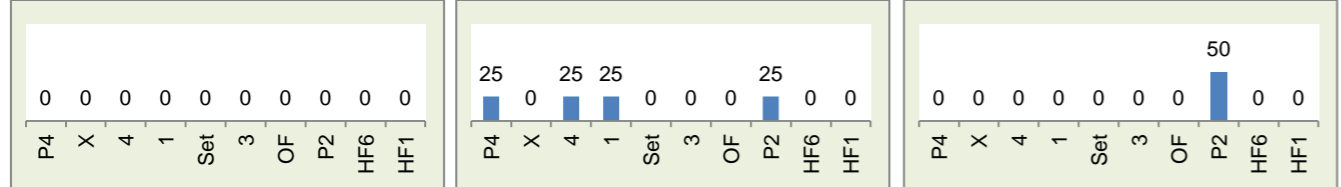
Rec in Pos 1 17% (1) Rec in Pos 6 83% (5) Rec in Pos 5 0% (0)



Rec in Pos 2 0% (0) Rec in Pos 3 0% (0) Rec in Pos 4 0% (0)



Settermovement to 4 0 Settermovement to 3 4 Settermovement to 2 2



Distribution

K1 after all R 12 8% 33% K1 after R#+ 6 17% 50% K2 Transition 6 50% 67%

Player	0	1	2	3	4	5	6	7	8	9	10	11	12
0	-	-	3	25%	0	-	-	-	-	-	-	-	-
1	-	-	-	-33%	0%	-	-	-	-	-	-	-	-
2	17%	2	17%	5	42%	-	-	-	-	-	-	-	-
3	0%	50%	-50%	0%	60%	60%	-	-	-	-	-	-	-

Reception	Σ	Σ %	=/	=/ %	+	+ %	#	# %	+ # %	Eff
Austria96_EM	18	100%	0	0%	4	22%	2	11%	33%	33%
9 Chrtianska	10	56%	0	0%	3	30%	2	20%	50%	50%
2 Berger	7	39%	0	0%	1	14%	0	0%	14%	14%
16 Markovic	1	6%	0	0%	0	0%	0	0%	0%	0%
1 Arsenijevic	0	0%	0	-	0	-	0	-	-	-
3 Schmitt	0	0%	0	-	0	-	0	-	-	-
4 Peischl	0	0%	0	-	0	-	0	-	-	-

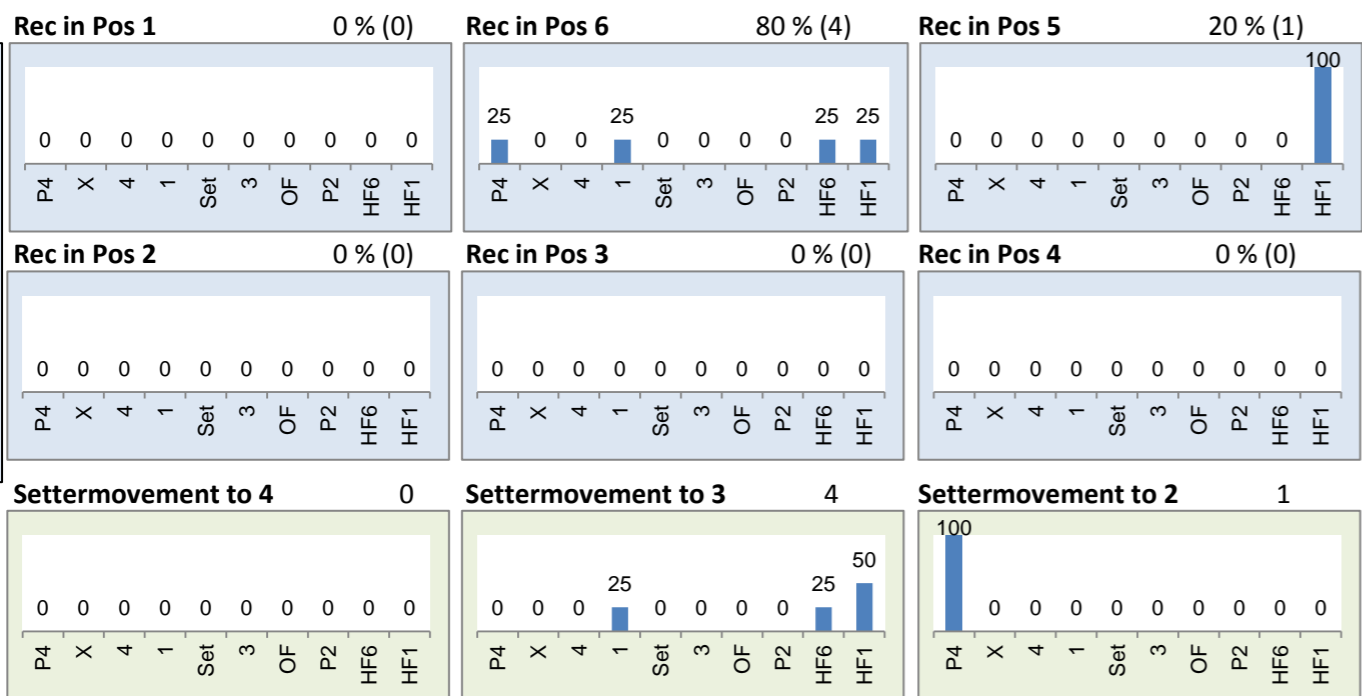
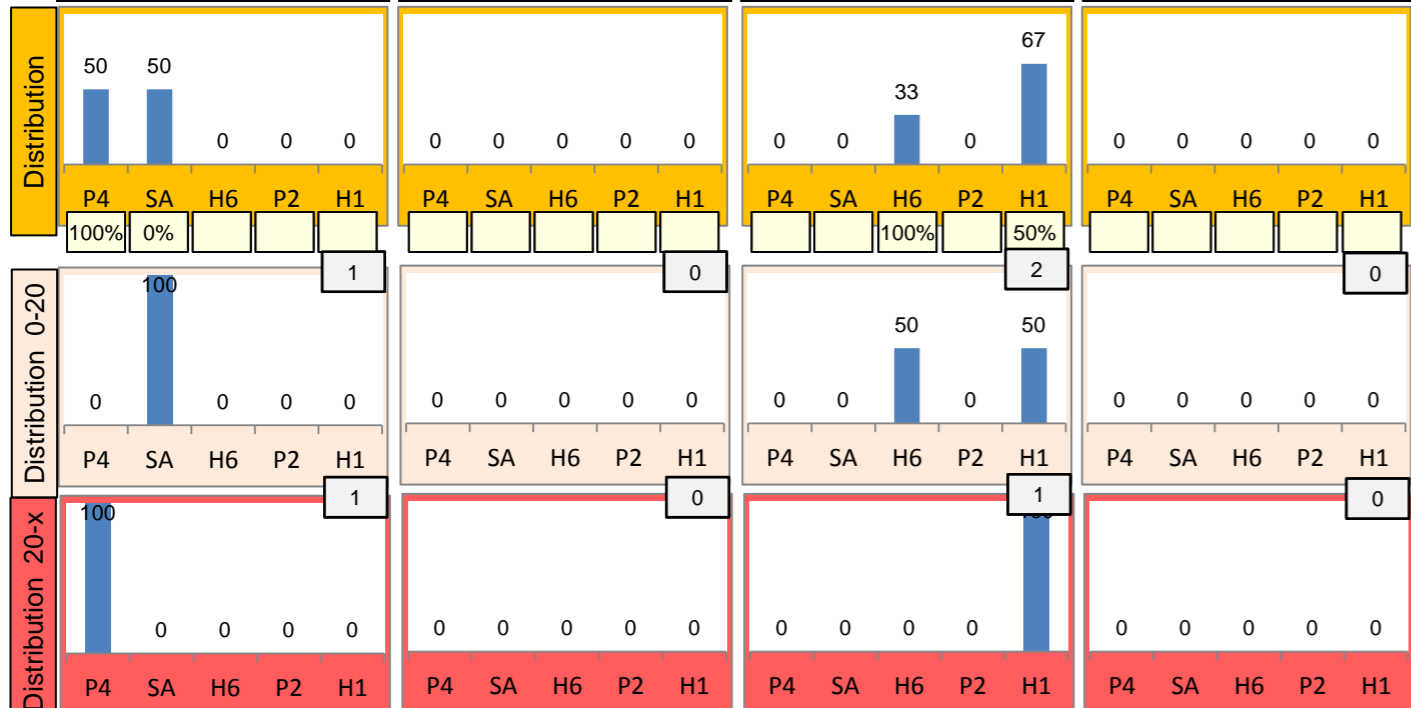
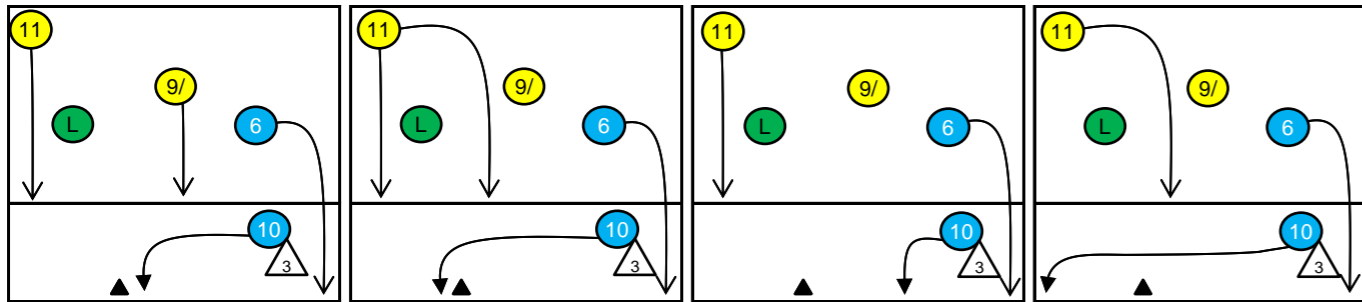
K1-Attacks after R#+	Σ	Σ %	=	= %	#	# %	Eff
Austria96_EM	6	100%	1	17%	3	50%	17%
6 Holzer	2	33%	0	0%	2	100%	100%
10 Brötzner	2	33%	1	50%	0	0%	-50%
11 Maros	2	33%	0	0%	1	50%	0%
1 Arsenijevic	0	0%	0	-	0	-	-
2 Berger	0	0%	0	-	0	-	-
3 Schmitt	0	0%	0	-	0	-	-
4 Peischl	0	0%	0	-	0	-	-

K2-Attacks - Transition	Σ	Σ %	=	= %	#	# %	Eff
Austria96_EM	6	100%	0	0%	4	67%	50%
6 Holzer	3	50%	0	0%	2	67%	33%
9 Chrtianska	2	33%	0	0%	1	50%	50%
5 Bruckmoser	1	17%	0	0%	1	100%	100%
1 Arsenijevic	0	0%	0	-	0	-	-
2 Berger	0	0%	0	-	0	-	-
3 Schmitt	0	0%	0	-	0	-	-
4 Peischl	0	0%	0	-	0	-	-

Rotation 4

Austria96_EM

Base K1 40 % (2) Base K2 0 % (0) Base K7 60 % (3) Base KD 0 % (0)



Distribution

K1 after all R 8 38% 50% K1 after R#+ 5 60% 60% K2 Transition 6 17% 33%

Player	2	1	0	2	1	0	3	0	0
25%	13%	-	40%	20%	-	50%	-	-	-
50%	100%	-	50%	100%	-	50%	33%	-	-
0	1	4	0	1	1	0	0	1	2
-	0%	25%	0%	0%	100%	0%	0%	0%	50%

Reception	Σ	Σ %	=/	=/ %	+	+ %	#	# %	+# %	Eff
Austria96_EM	8	100%	0	0%	3	38%	2	25%	63%	63%
9 Chrtianska	4	50%	0	0%	1	25%	1	25%	50%	50%
2 Berger	2	25%	0	0%	1	50%	0	0%	50%	50%
16 Markovic	2	25%	0	0%	1	50%	1	50%	100%	100%
1 Arsenijevic	0	0%	0	-	0	-	0	-	-	-
3 Schmitt	0	0%	0	-	0	-	0	-	-	-
4 Peischl	0	0%	0	-	0	-	0	-	-	-

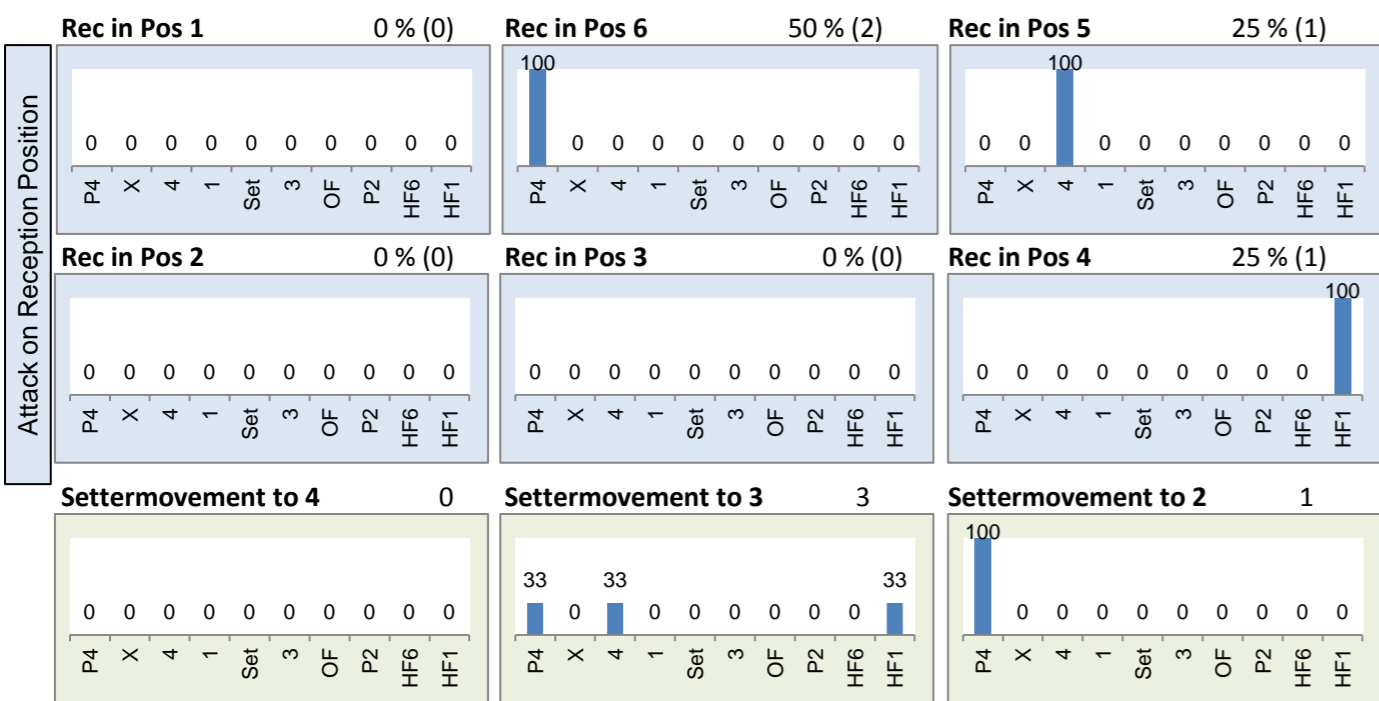
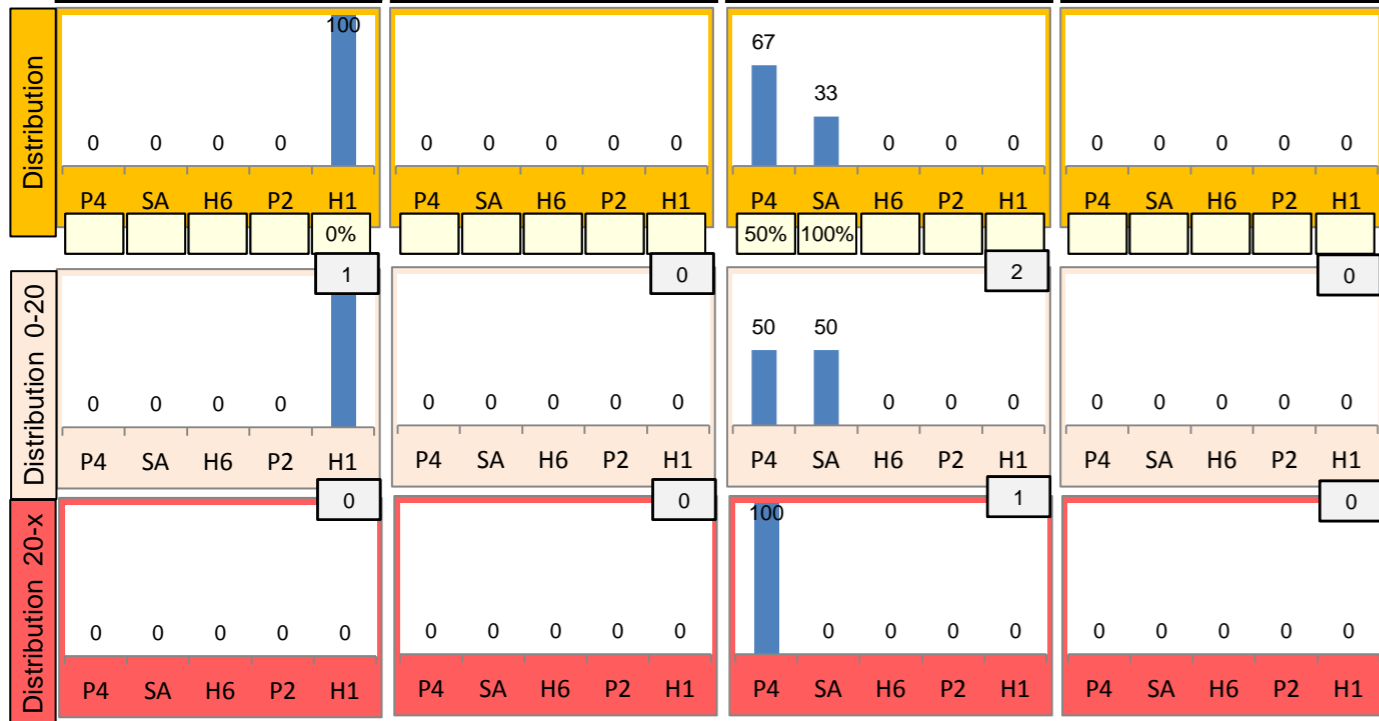
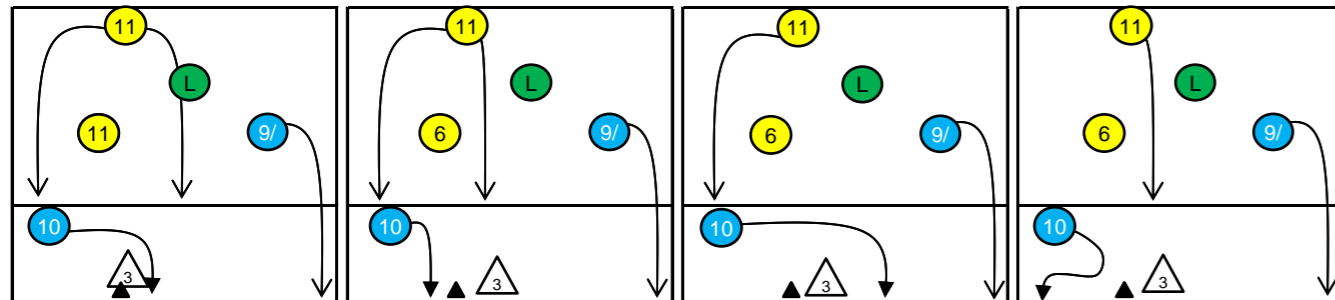
K1-Attacks after R#+	Σ	Σ %	=	= %	#	# %	Eff
Austria96_EM	5	100%	0	0%	3	60%	60%
11 Maros	2	40%	0	0%	1	50%	50%
6 Holzer	1	20%	0	0%	1	100%	100%
9 Chrtianska	1	20%	0	0%	1	100%	100%
10 Brötzner	1	20%	0	0%	0	0%	0%
1 Arsenijevic	0	0%	0	-	0	-	-
2 Berger	0	0%	0	-	0	-	-
3 Schmitt	0	0%	0	-	0	-	-

K2-Attacks - Transitor	Σ	Σ %	=	= %	#	# %	Eff
Austria96_EM	6	100%	0	0%	2	33%	17%
6 Holzer	2	33%	0	0%	1	50%	0%
11 Maros	2	33%	0	0%	1	50%	50%
5 Bruckmoser	1	17%	0	0%	0	0%	0%
10 Brötzner	1	17%	0	0%	0	0%	0%
1 Arsenijevic	0	0%	0	-	0	-	-
2 Berger	0	0%	0	-	0	-	-
3 Schmitt	0	0%	0	-	0	-	-

Rotation 3

Austria96_EM

Base K1 25% (1) Base K2 0% (0) Base K7 75% (3) Base KD 0% (0)



Distribution

K1 after all R 6 50% 50% K1 after R#+ 4 50% 50% K2 Transition 6 50% 50%

Category	1	17%	0	0%	0	0%	0	0%	0	0%
Base K1	0%	0%	0%	0%	-	-	-	-	-	-
Base K2	0	-	1	17%	3	50%	0	-	2	50%
Base K7	-	-	100%	100%	67%	67%	-	-	50%	50%
Base KD	-	-	100%	100%	50%	50%	50%	50%	50%	50%

Reception	Σ	Σ %	=	= %	+	+ %	#	# %	+ # %	Eff
Austria96_EM	6	100%	0	0%	1	17%	3	50%	67%	67%
2 Berger	2	33%	0	0%	0	0%	1	50%	50%	50%
6 Holzer	2	33%	0	0%	0	0%	1	50%	50%	50%
9 Chrtianska	1	17%	0	0%	1	100%	0	0%	100%	100%
13 Jenner	1	17%	0	0%	0	0%	1	100%	100%	100%
1 Arsenijevic	0	0%	0	-	0	-	0	-	-	-
3 Schmitt	0	0%	0	-	0	-	0	-	-	-

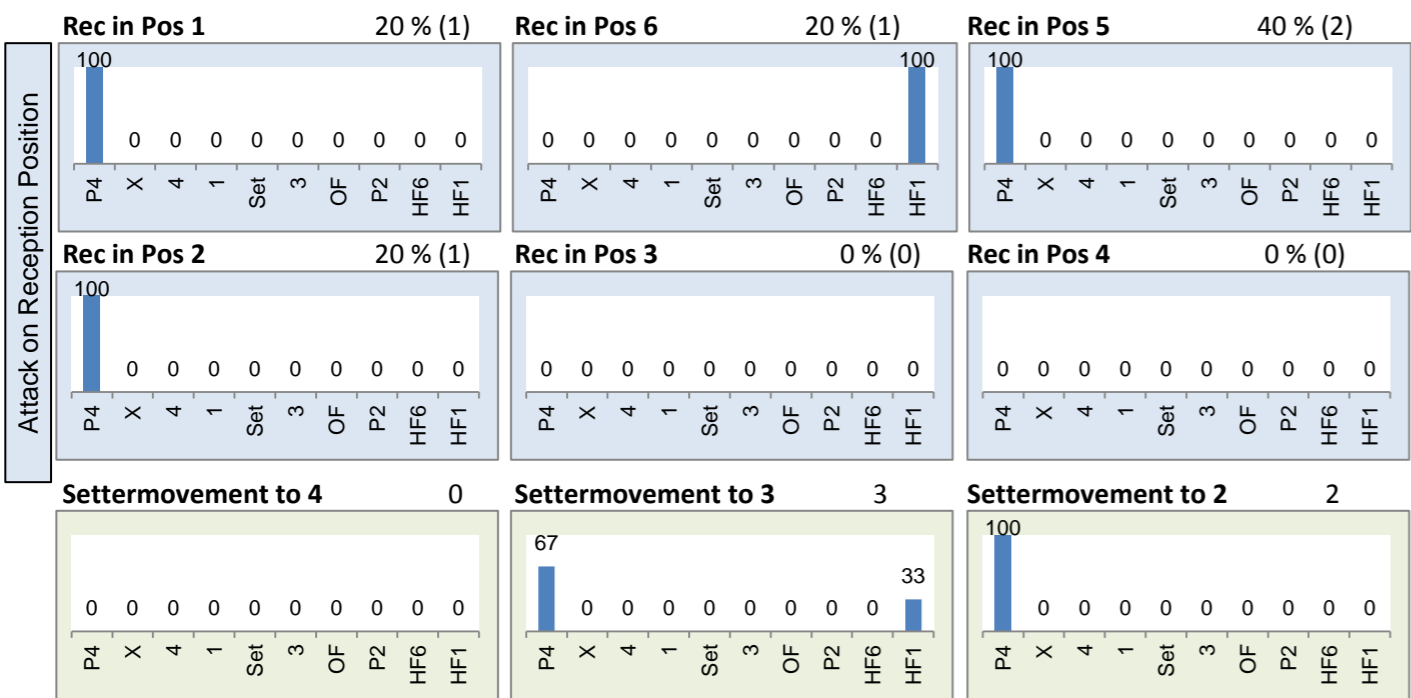
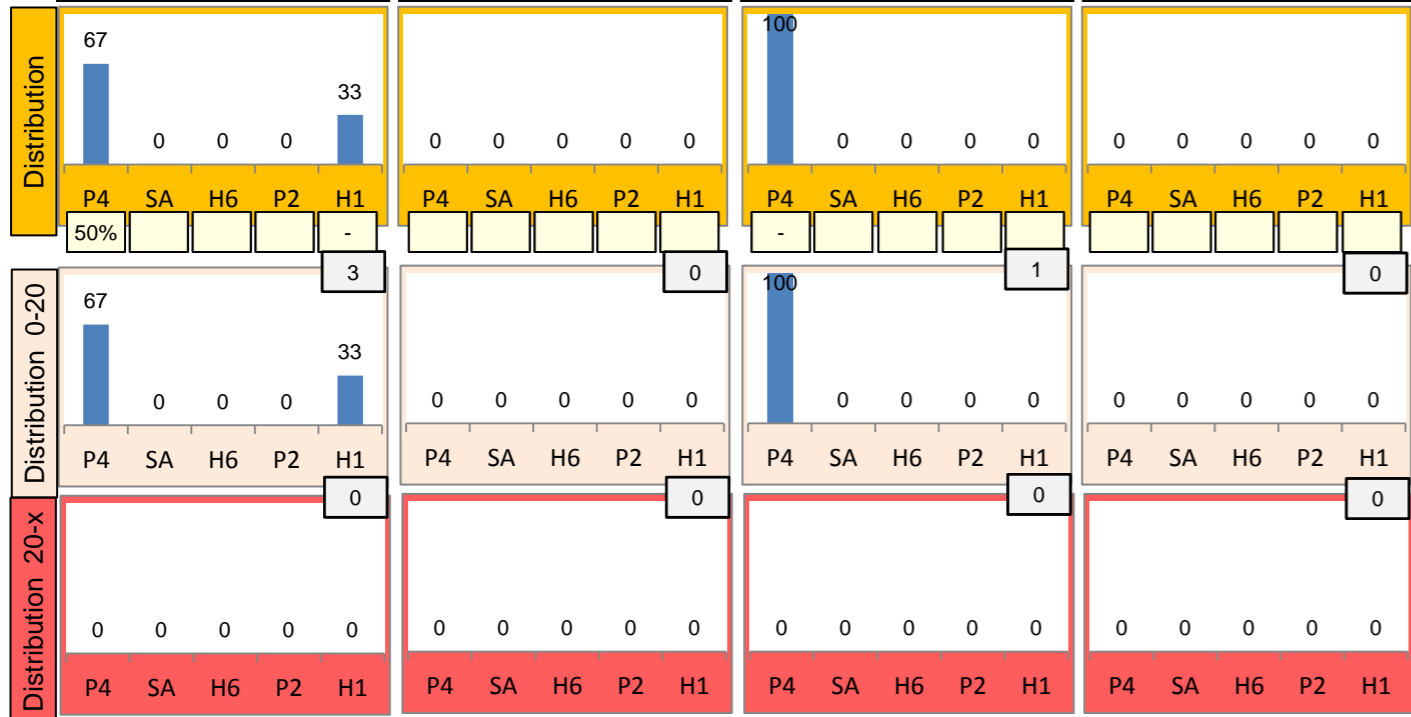
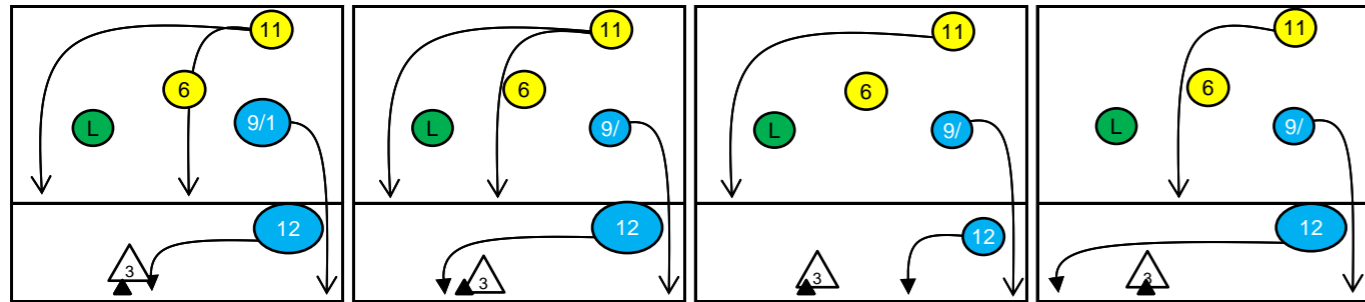
K1-Attacks after R#+	Σ	Σ %	=	= %	#	# %	Eff
Austria96_EM	4	100%	0	0%	2	50%	50%
9 Chrtianska	1	25%	0	0%	0	0%	0%
10 Brötzner	1	25%	0	0%	1	100%	100%
11 Maros	1	25%	0	0%	0	0%	0%
16 Markovic	1	25%	0	0%	1	100%	100%
1 Arsenijevic	0	0%	0	-	0	-	-
2 Berger	0	0%	0	-	0	-	-
3 Schmitt	0	0%	0	-	0	-	-

K2-Attacks - Transition	Σ	Σ %	=	= %	#	# %	Eff
Austria96_EM	6	100%	0	0%	3	50%	50%
9 Chrtianska	4	67%	0	0%	2	50%	50%
10 Brötzner	2	33%	0	0%	1	50%	50%
1 Arsenijevic	0	0%	0	-	0	-	-
2 Berger	0	0%	0	-	0	-	-
3 Schmitt	0	0%	0	-	0	-	-
4 Peischl	0	0%	0	-	0	-	-
5 Bruckmoser	0	0%	0	-	0	-	-

Rotation 2

Austria96_EM

Base K1 75% (3) Base K2 0% (0) Base K7 25% (1) Base KD 0% (0)



Distribution

K1 after all R 8 -50% 13% K1 after R#+ 5 -40% 20% K2 Transition 10 10% 20%

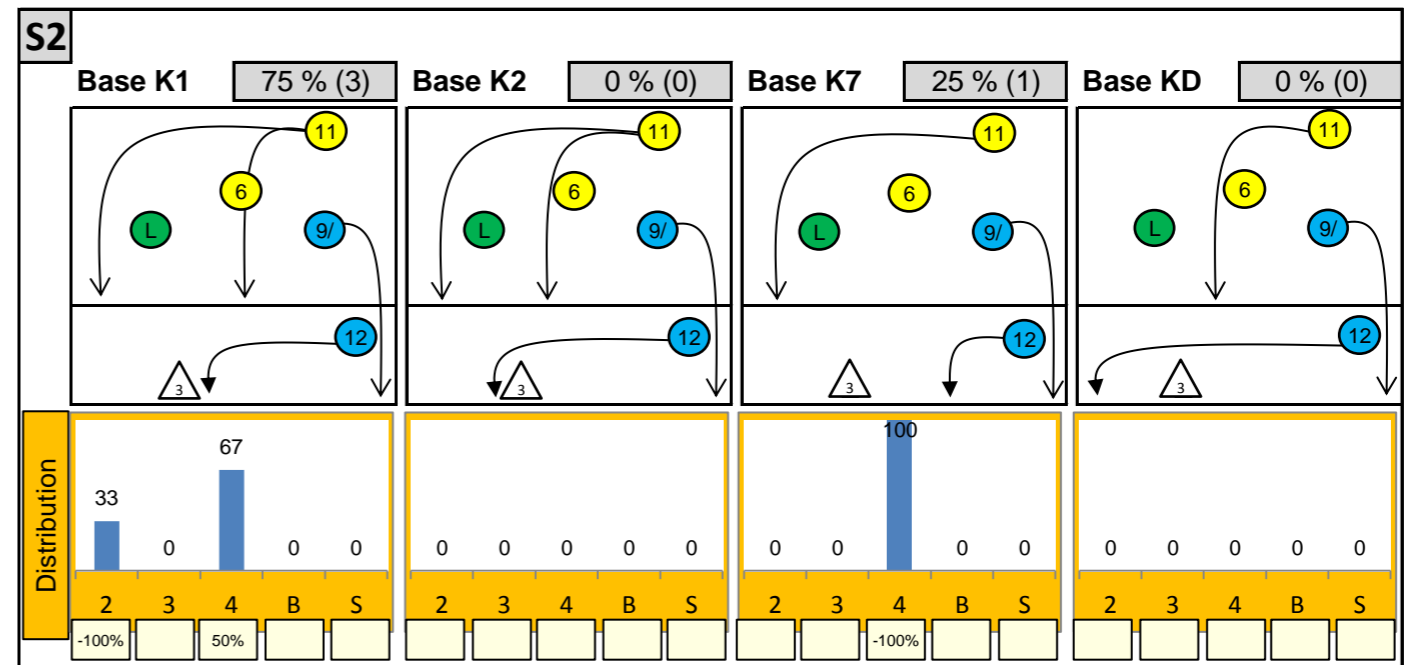
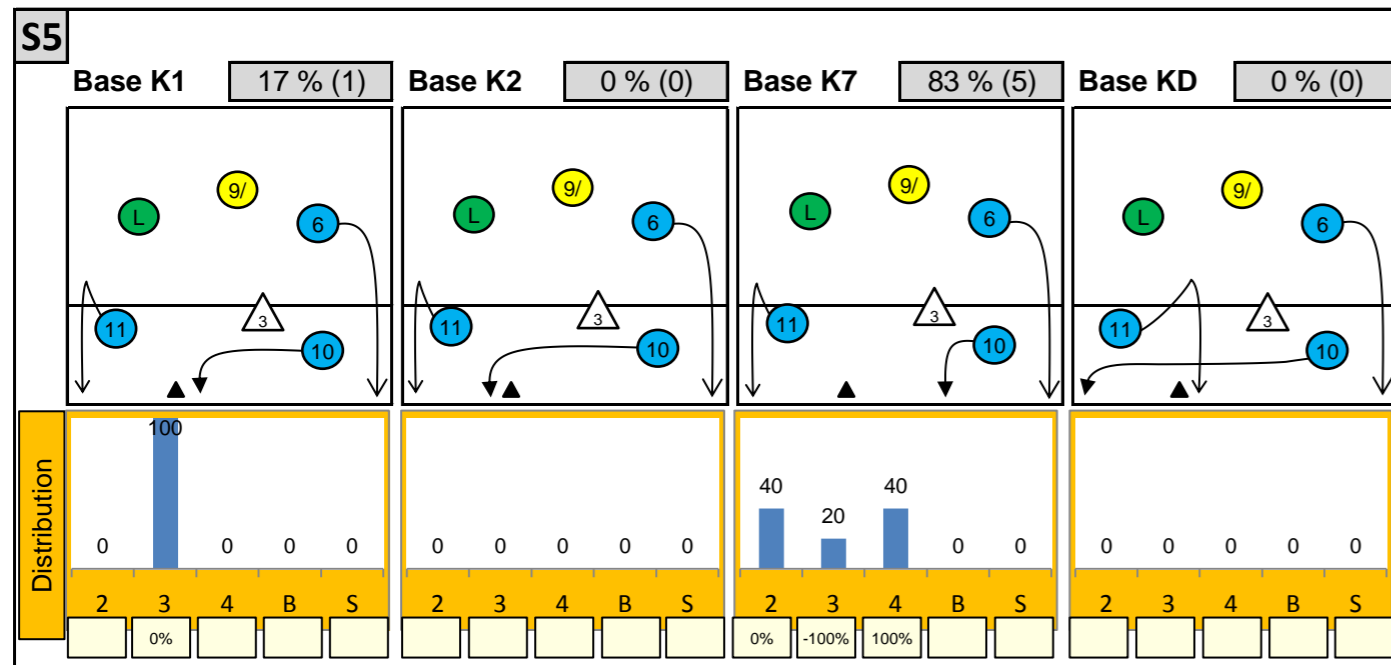
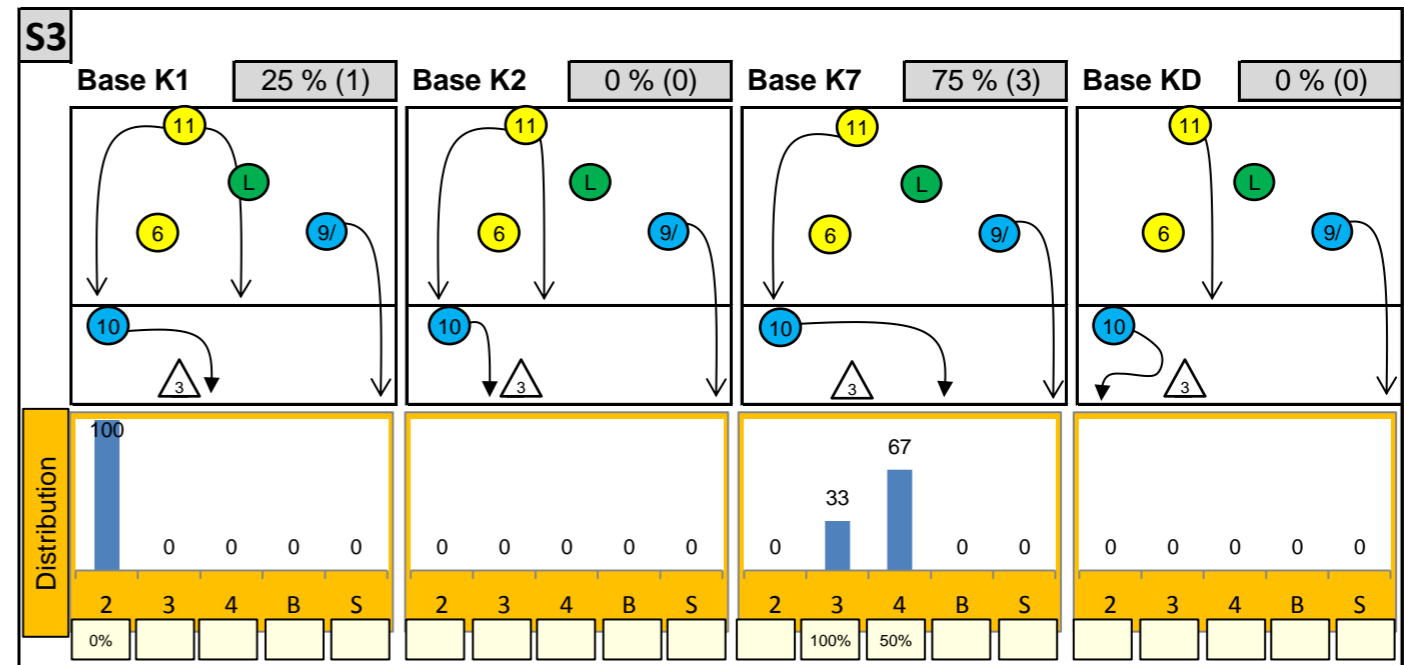
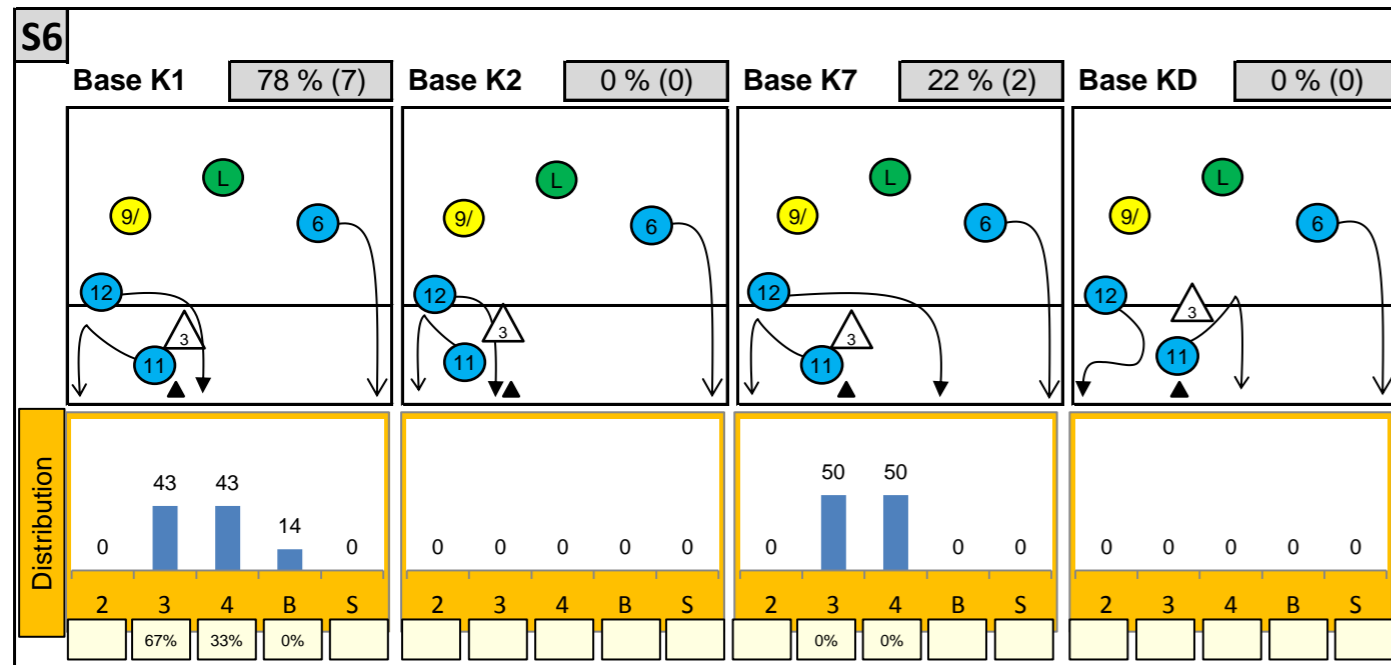
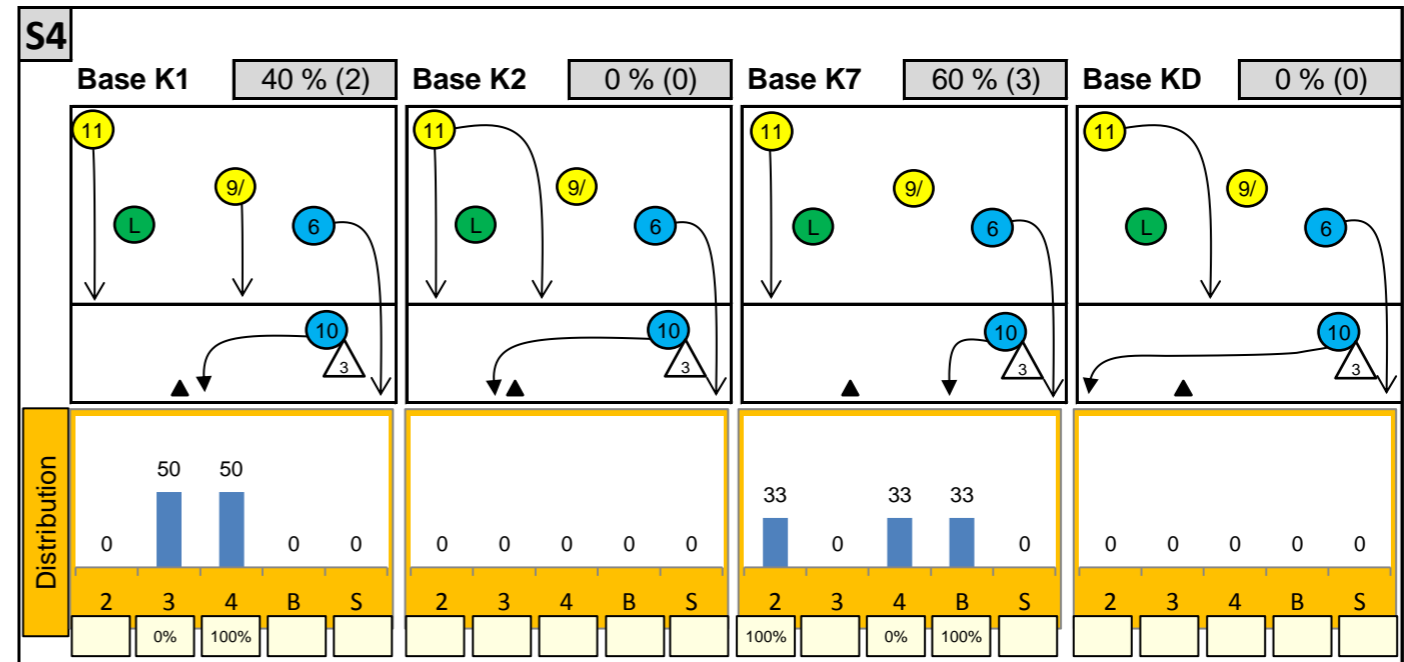
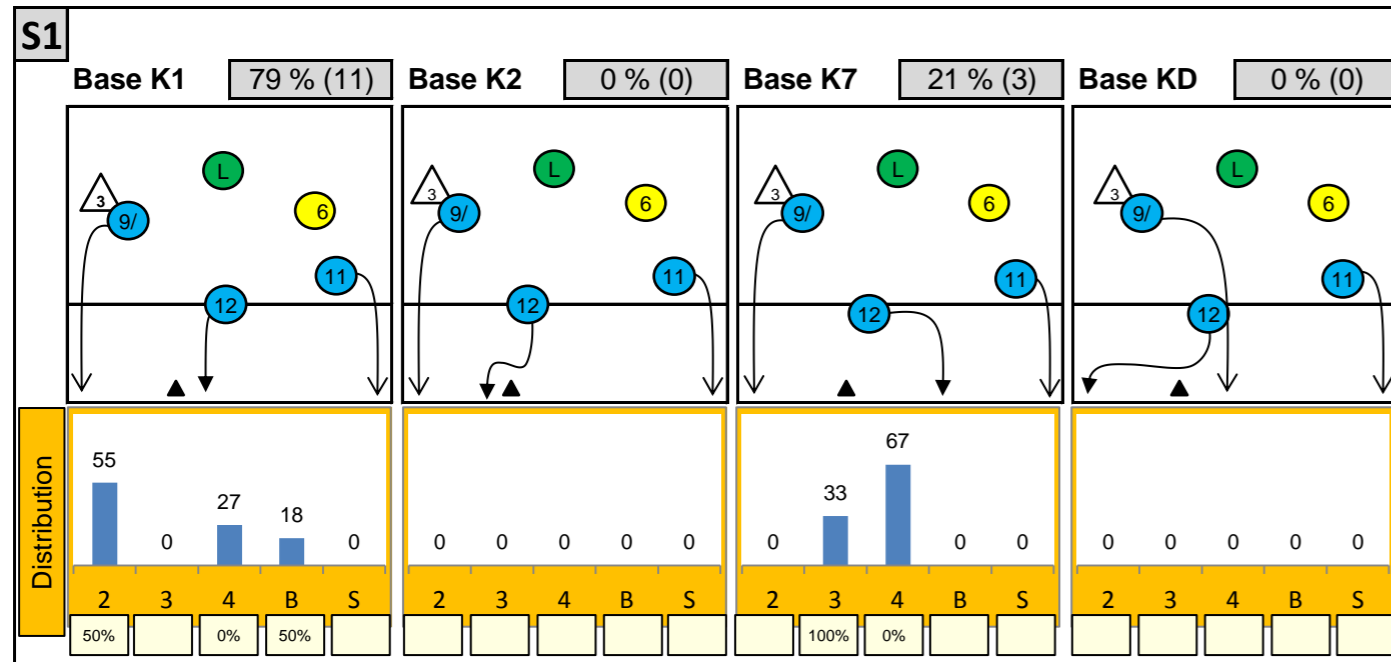
Category	Value	%	Value	%	Value	%
K1 after all R	8	-50%	13	13%		
K1 after R#+	5	-40%	20	20%		
K2 Transition	10	10%	20	20%		

Reception	Σ	Σ %	=	= %	+	+ %	#	# %	+ # %	Eff
Austria96_EM	13	100%	1	8%	3	23%	2	15%	38%	31%
2 Berger	6	46%	0	0%	0	0%	2	33%	33%	33%
6 Holzer	3	23%	0	0%	1	33%	0	0%	33%	33%
9 Chrtianska	3	23%	0	0%	2	67%	0	0%	67%	67%
13 Jenner	1	8%	1	100%	0	0%	0	0%	0%	-100%
1 Arsenijevic	0	0%	0	-	0	-	0	-	-	-
3 Schmitt	0	0%	0	-	0	-	0	-	-	-

K1-Attacks after R#+	Σ	Σ %	=	= %	#	# %	Eff
Austria96_EM	5	100%	0	0%	1	20%	-40%
9 Chrtianska	4	80%	0	0%	1	25%	-25%
11 Maros	1	20%	0	0%	0	0%	-100%
1 Arsenijevic	0	0%	0	-	0	-	-
2 Berger	0	0%	0	-	0	-	-
3 Schmitt	0	0%	0	-	0	-	-
4 Peischl	0	0%	0	-	0	-	-
5 Bruckmoser	0	0%	0	-	0	-	-

K2-Attacks - Transitor	Σ	Σ %	=	= %	#	# %	Eff
Austria96_EM	10	100%	1	10%	2	20%	10%
6 Holzer	3	30%	0	0%	0	0%	0%
9 Chrtianska	2	20%	0	0%	1	50%	50%
11 Maros	2	20%	1	50%	0	0%	-50%
16 Markovic	2	20%	0	0%	1	50%	50%
5 Bruckmoser	1	10%	0	0%	0	0%	0%
1 Arsenijevic	0	0%	0	-	0	-	-
2 Berger	0	0%	0	-	0	-	-

Attackdistribution depending on Settercalls - Austria96_EM



2: Attack of Opposite

3: Attack of Middleblocker

4: Attack of Outside

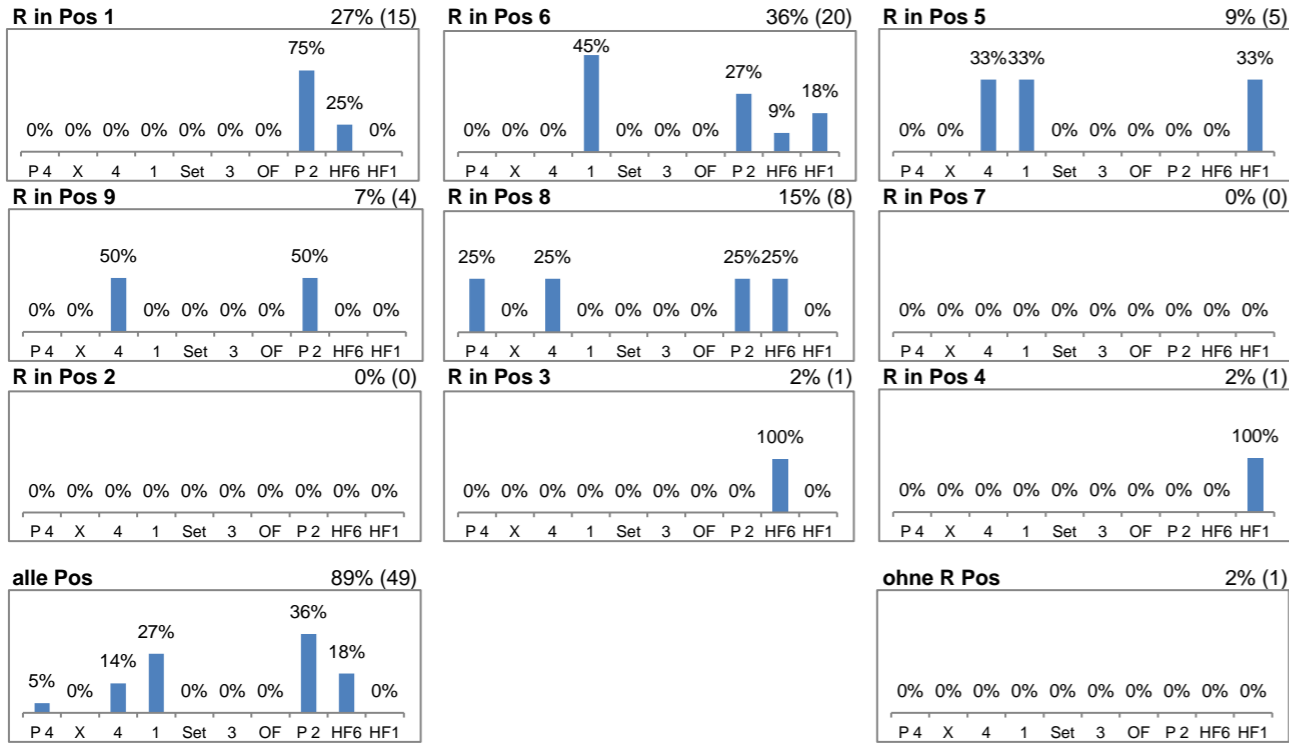
B: Attack of Backrow

S: Attack of Setter

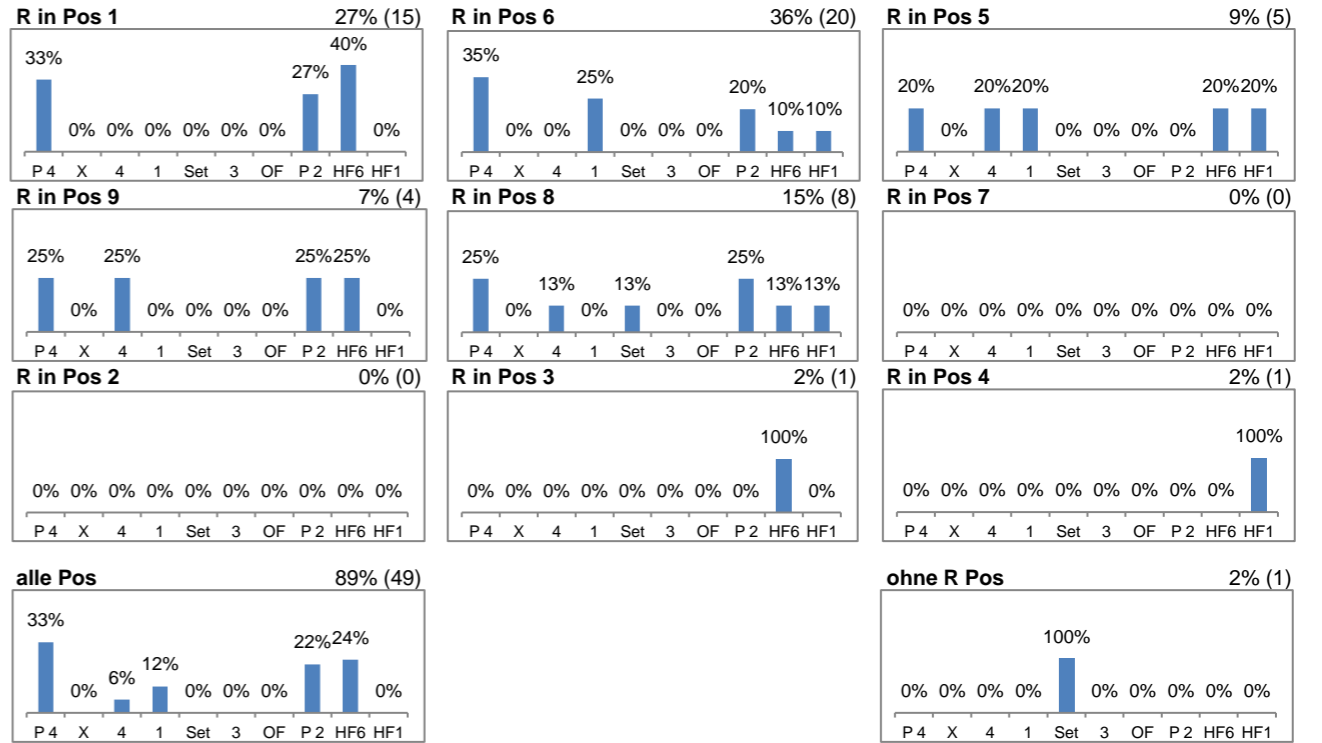
xx%: Efficiency of Attacks (-100% to +100%)

Attacks depending on Reception Position - Austria96_EM

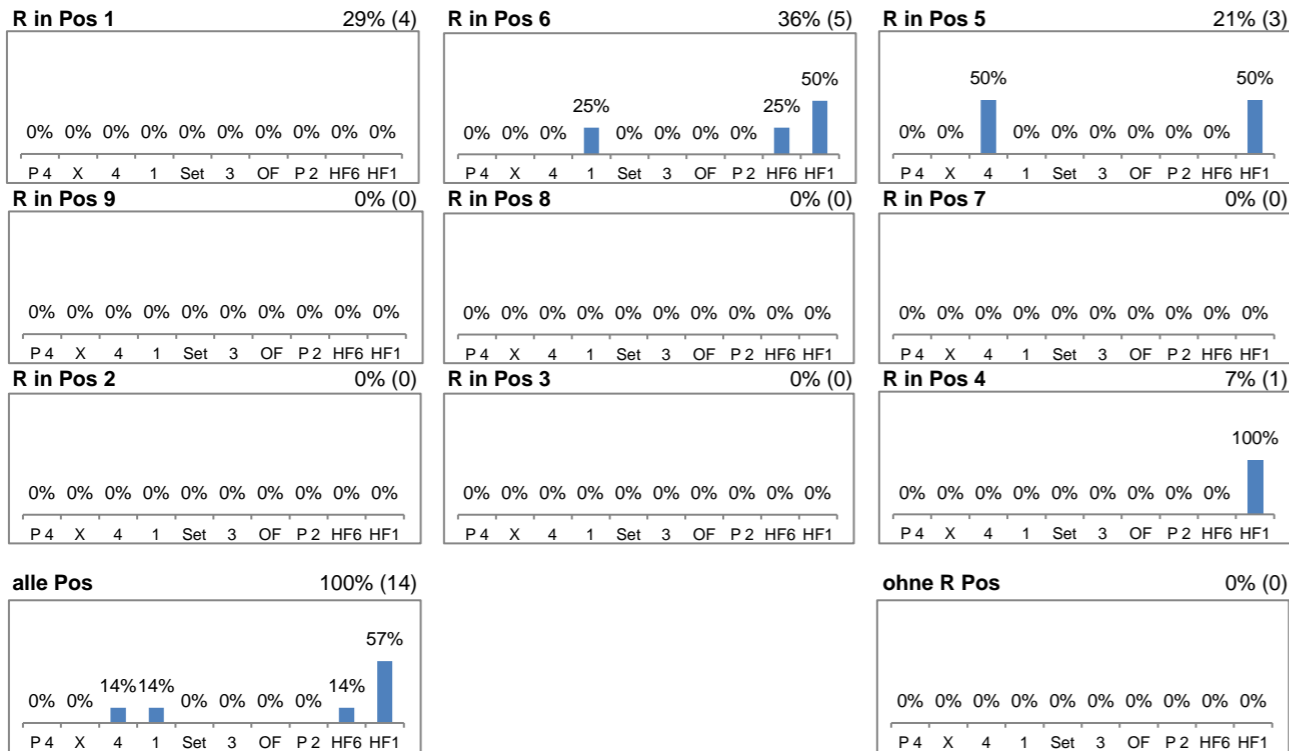
Setter back (S1, S6, S5) - R#+



Setter back (S1, S6, S5) - all Receptions



Setter front (S4, S3, S2) - R#+



Setter front (S4, S3, S2) - all Receptions

