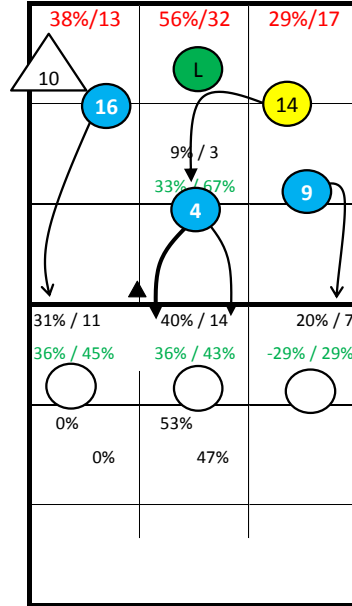


Roster

1 Meidlová	Out
2 Uhlířová	Lib
4 Lakomá	MB
6 Tesařová	Opp
7 Hudylivová	MB
8 Šimáňová	Opp
9 Suchá	Set
10 Kurková	Out
12 Beránková	MB
13 Nová	Out
14 Hrazdírová	Set
15 Vaňková	Out

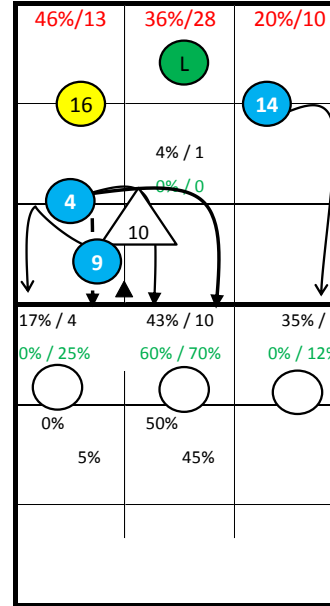
Czech Republic 96' -

10: Jumpfloat at Position 1



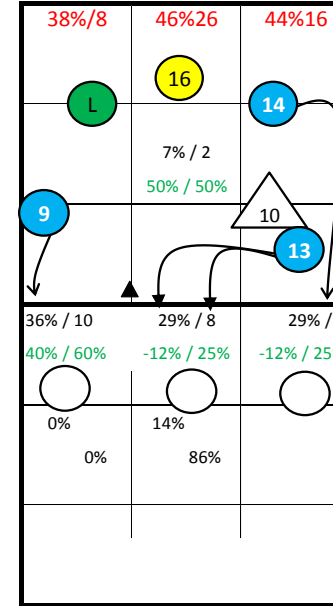
S1

16: Jumpfloat at Position 6



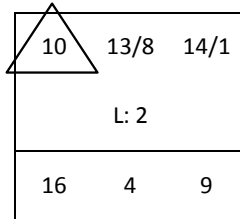
S6

4: Jumpfloat at Position 5



S5

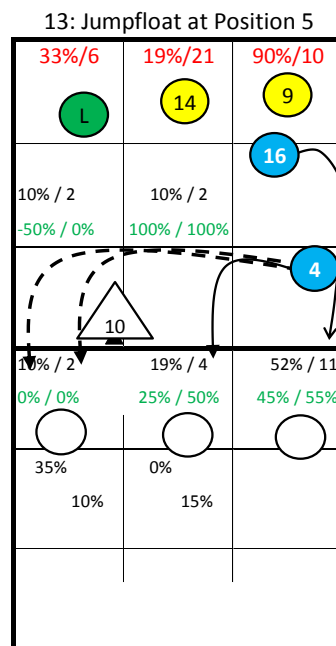
Starting Lineup:



Rotation:

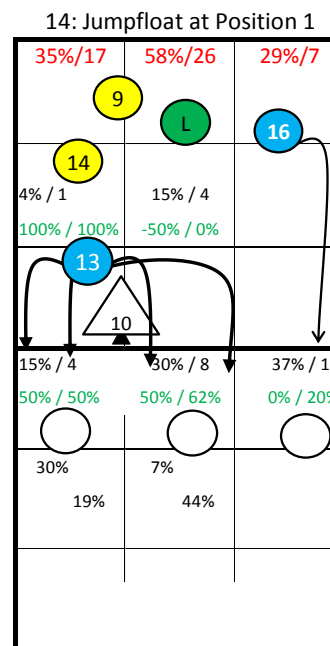
Ser: S1
Rec: S1

8: Jumpfloat at Position 5



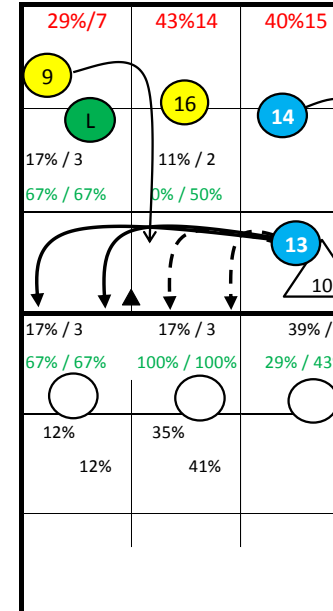
S2

1: Jumpfloat at Position 1



S3

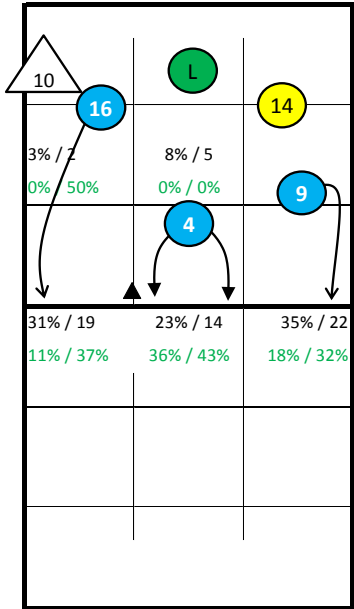
9: Jumpfloat at Position 1



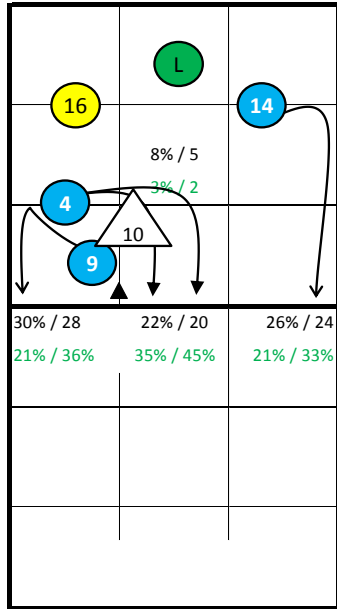
S4

Notes:

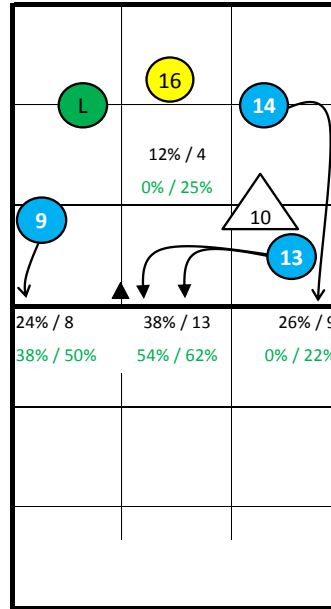
Czech Republic 96' -



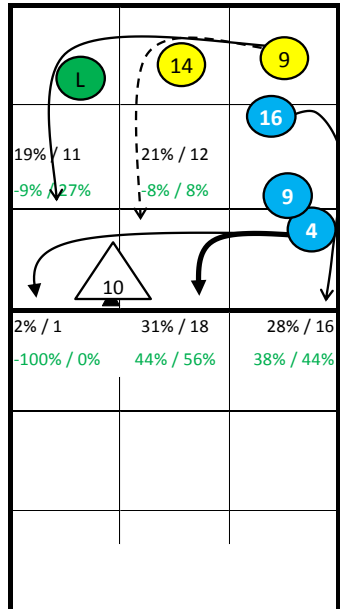
S1



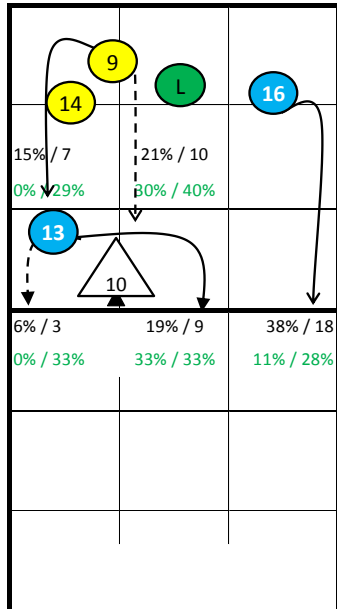
S6



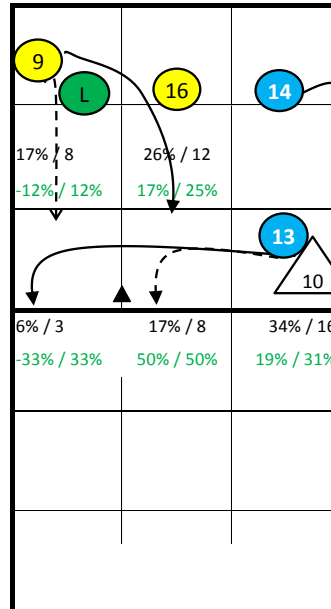
S5



S2



S3



S4

Notes:

Czech Republic 96' - all Statistics

pld	Points					Serve								Reception										Attack											
	Set	pts	P/s	easy=	all=	W-L	Σ	=	-	+	#	=%	#%	eff%	Σ	in %	=	/	-	+	#	=/%	+##%	#%	eff%	Σ	in %	=	/	!	+	#	=/%	#%	eff%
Czech Republic 96'	20	322	16,1	124	403	-81	460	39	194	202	25	8%	5%	49%	358		46	4	154	72	82	14%	43%	23%	29%	626		73	35	33	156	234	17%	37%	20%
1 Meidlová	5	18	3,6	9	18	0	8	1	7	0	0	13%	0%	0%	16	4%	1	0	7	4	4	6%	50%	25%	44%	47	8%	7	1	5	14	16	17%	34%	17%
2 Uhlířová	20	0			48	-48	0							107	30%	15	2	40	19	31	16%	47%	29%	31%	0										
4 Lakomá	14	35	2,5	8	22	13	52	3	18	29	2	6%	4%	60%	3	1%	1	0	1	1	0	33%	33%	0%	0%	33	5%	4	1	0	8	15	15%	45%	30%
6 Tesařová	6	6	1,0	7	22	-16	10	1	5	4	0	10%	0%	40%	0											29	5%	6	3	2	5	6	31%	21%	-10%
7 Hudylivová	6	9	1,5	3	6	3	18	2	8	6	2	11%	11%	44%	1	0%	0	0	0	1	0	0%	100%	0%	100%	13	2%	1	0	0	5	6	8%	46%	38%
8 Šimáňová	14	21	1,5	5	14	7	29	3	11	13	2	10%	7%	52%	0											17	3%	1	0	2	2	9	6%	53%	47%
9 Suchá	17	55	3,2	33	72	-17	56	9	20	22	5	16%	9%	48%	2	1%	2	0	0	0	0	100%	0%	0%	-100%	136	22%	23	11	3	37	49	25%	36%	11%
10 Kurková	20	18	0,9	10	30	-12	84	6	41	34	3	7%	4%	44%	1	0%	0	0	1	0	0	0%	0%	0%	0%	23	4%	0	0	3	4	12	0%	52%	52%
12 Beránková	0	0			0	0	0							0												0									
13 Nová	16	37	2,3	10	29	8	49	4	18	26	1	8%	2%	55%	2	1%	2	0	0	0	0	100%	0%	0%	-100%	49	8%	4	2	6	8	24	12%	49%	37%
14 Hrazdířová	16	24	1,5	11	55	-31	57	6	22	28	1	11%	2%	51%	96	27%	17	1	48	10	20	19%	31%	21%	12%	80	13%	4	4	4	27	21	10%	26%	16%
15 Vaňková	2	0			1	-1	5	0	3	2	0	0%	0%	40%	0											0									

	Block						Defense						Freeball					Set		
	Σ	=	+	#	#%	eff%	Σ	=	/-!	+#	+##%	eff%	Σ	err	bad	god	eff%	Σ	=	eff%
Czech Republic 96'	209	70	13	63	30%	3%	484	132	134	218	45%	47%	48	2	45	1	-2%	363	6	80%
1 Meidlová	8	3	0	2	25%	-12%	12	5	1	6	50%	50%	4	0	4	0	0%	1	0	0%
2 Uhlířová	0						107	33	35	39	36%	37%	12	0	11	1	8%	52	0	75%
4 Lakomá	33	9	0	18	55%	27%	11	3	4	4	36%	36%	4	0	4	0	0%	2	1	0%
6 Tesařová	4	3	1	0	0%	-50%	24	9	8	7	29%	33%	4	0	4	0	0%	5	0	0%
7 Hudylivová	8	1	2	1	13%	25%	5	2	2	1	20%	40%	0					1	0	0%
8 Šimáňová	21	6	0	10	48%	19%	14	3	4	7	50%	57%	2	0	2	0	0%	3	1	-33%
9 Suchá	18	10	2	1	6%	-39%	61	16	10	35	57%	57%	3	1	2	0	-33%	13	0	38%
10 Kurková	21	8	3	3	14%	-10%	57	12	26	19	33%	33%	1	0	1	0	0%	251	4	92%
12 Beránková	0						0						0					0		
13 Nová	37	10	3	12	32%	14%	20	7	1	12	60%	65%	2	0	2	0	0%	11	0	36%
14 Hrazdířová	17	7	0	2	12%	-29%	66	16	19	31	47%	52%	5	1	4	0	-20%	6	0	0%
15 Vaňková	0						3	1	1	1	33%	33%	0					4	0	75%

pld Set played Sets
 P/s Points per Set
 pts Points
 easy= easy errors (serve, net contact, ...)
 all= all errors
 W-L points - errors
 Σ sum of all events
 in % in percent of all team events

Czech Republic 96' - Attack-Statistic

	K1 & K2 Attacks								K1 All Attacks								K2 Attacks								K1 aft R other Ply				K1 after own Rec			
	Σ	in %	=	/	#	=/%	##	eff	Σ	in %	=	/	#	=/%	##	eff	Σ	in %	=	/	#	=/%	##	eff	sum	#	##	eff	sum	#	##	eff
Czech Republic 96'	569		72	32	208	18%	37%	18%	272		37	16	107	19%	39%	20%	297		35	16	101	17%	34%	17%	180	66	37%		12	3	25%	
9 Suchá	134	24%	22	11	48	25%	36%	11%	66	24%	10	6	26	24%	39%	15%	68	23%	12	5	22	25%	32%	7%	66	26	39%	15%	0			
14 Hrazdírová	78	14%	4	4	20	10%	26%	15%	40	15%	2	0	12	5%	30%	25%	38	13%	2	4	8	16%	21%	5%	31	9	29%	26%	9	3	33%	22%
1 Meidlová	46	8%	7	1	15	17%	33%	15%	18	7%	5	1	5	33%	28%	-6%	28	9%	2	0	10	7%	36%	29%	15	5	33%	7%	3	0	0%	-67%
13 Nová	46	8%	4	2	22	13%	48%	35%	27	10%	3	1	11	15%	41%	26%	19	6%	1	1	11	11%	58%	47%	27	11	41%	26%	0			
6 Tesařová	28	5%	6	3	6	32%	21%	-11%	13	5%	4	2	1	46%	8%	-38%	15	5%	2	1	5	20%	33%	13%	13	1	8%	-38%	0			
4 Lakomá	23	4%	4	1	10	22%	43%	22%	13	5%	1	1	6	15%	46%	31%	10	3%	3	0	4	30%	40%	10%	13	6	46%	31%	0			
8 Šimáňová	14	2%	1	0	9	7%	64%	57%	7	3%	0	0	4	0%	57%	57%	7	2%	1	0	5	14%	71%	57%	7	4	57%	57%	0			
7 Hudylivová	11	2%	1	0	6	9%	55%	45%	7	3%	1	0	4	14%	57%	43%	4	1%	0	0	2	0%	50%	50%	7	4	57%	43%	0			
10 Kurková	1	0%	0	0	0	0%	0%	0%	1	0%	0	0	0	0%	0%	0%	0								1	0	0%	0%	0			
2 Uhlířová	0								0								0								0				0			
12 Beránková	0								0								0								0				0			
15 Vaňková	0								0								0								0				0			

	K1 after R#+								K1 after R-!								Freeball-Attacks							
	Σ	in %	=	/	#	=/%	##	eff	Σ	in %	=	/	#	=/%	##	eff	Σ	in %	=	/	#	=/%	##	eff
Czech Republic 96'	148		20	8	63	19%	43%	24%	124		17	8	44	20%	35%	15%	79		8	3	43	14%	54%	41%
9 Suchá	23	16%	4	1	13	22%	57%	35%	43	35%	6	5	13	26%	30%	5%	14	233%	1	0	6	7%	43%	36%
14 Hrazdírová	18	12%	2	0	5	11%	28%	17%	22	18%	0	0	7	0%	32%	32%	5	250%	0	0	2	0%	40%	40%
1 Meidlová	11	7%	4	0	3	36%	27%	-9%	7	6%	1	1	2	29%	29%	0%	4	133%	0	0	3	0%	75%	75%
13 Nová	26	18%	3	1	11	15%	42%	27%	1	1%	0	0	0	0%	0%	0%	17	155%	1	1	11	12%	65%	53%
6 Tesařová	7	5%	1	2	1	43%	14%	-29%	6	5%	3	0	0	50%	0%	-50%	3	300%	0	1	1	33%	33%	0%
4 Lakomá	13	9%	1	1	6	15%	46%	31%	0								8	267%	3	0	3	38%	38%	0%
8 Šimáňová	7	5%	0	0	4	0%	57%	57%	0								6	150%	1	0	4	17%	67%	50%
7 Hudylivová	6	4%	1	0	4	17%	67%	50%	1	1%	0	0	0	0%	0%	0%	1	0	0	0	0	0%	0%	0%
10 Kurková	0								1	1%	0	0	0	0%	0%	0%	0							
2 Uhlířová	0								0								0							
12 Beránková	0								0								0							
15 Vaňková	0								0								0							

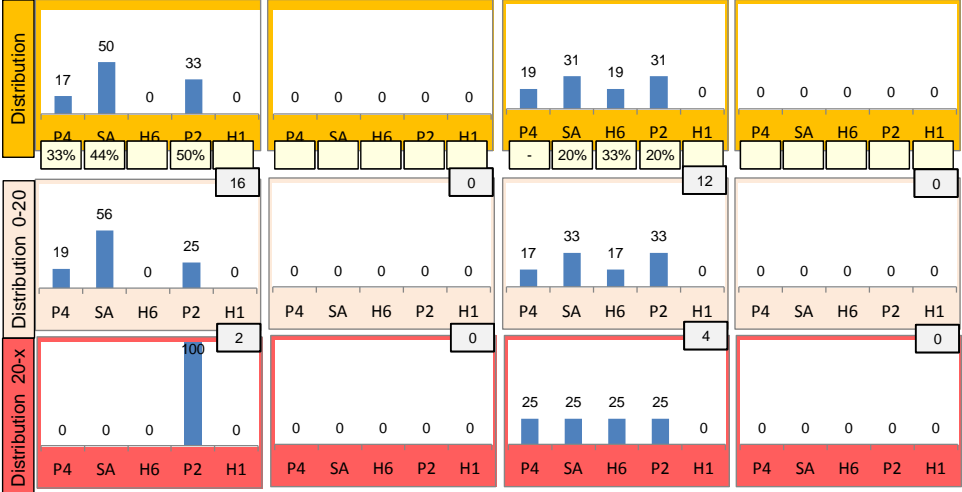
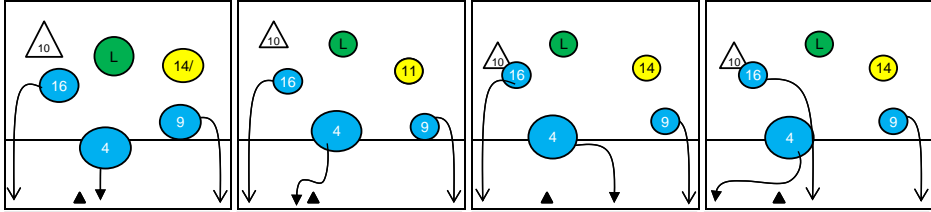
Rotation 1

Czech Republic 96'

Distribution

Base K1 53% (18) Base K2 0% (0) Base K7 47% (16) Base KD 0% (0)

K1 after all R 60 18% 38% K1 after R#+ 35 23% 43% K2 Transition 59 19% 36%

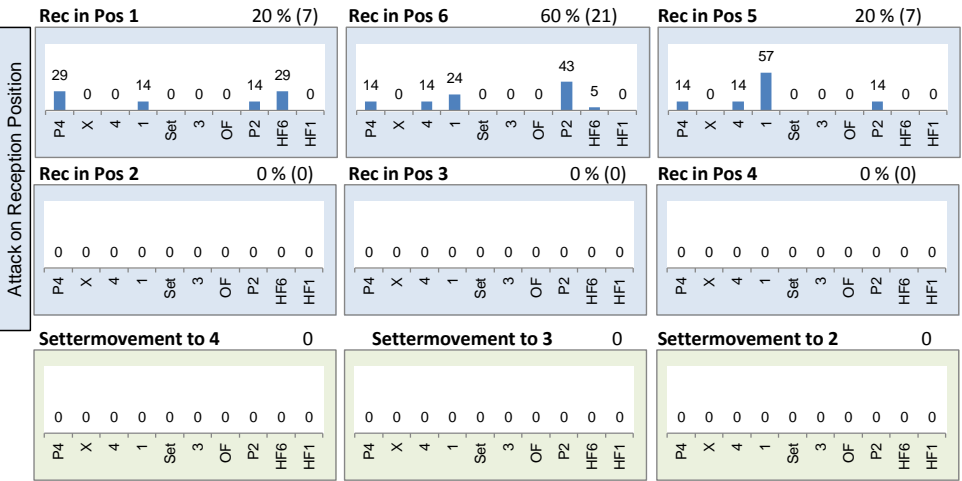


Player	1	2%	3	5%	0	-
0%	0%	33%	67%	-	-	-
20	33%	15	25%	21	35%	
40%	50%	33%	40%	-14%	24%	

Reception	Σ	Σ%	=	= %	+	+ %	#	#%	+#%	Eff
Czech Republic 96'	74	100%	9	12%	13	18%	22	30%	47%	35%
2 Uhlířová	32	43%	3	9%	7	22%	11	34%	56%	47%
14 Hrazdířová	17	23%	3	18%	2	12%	3	18%	29%	12%
16 Mlejnková	13	18%	2	15%	3	23%	2	15%	38%	23%
99 Kalhousová	10	14%	0	0%	1	10%	6	60%	70%	70%
1 Meidlová	1	1%	0	0%	0	0%	0	0%	0%	0%
13 Nová	1	1%	1	100%	0	0%	0	0%	0%	-100%

K1-Attacks after R#+	Σ	Σ%	=	= %	#	#%	Eff
Czech Republic 96'	35	100%	4	11%	15	43%	23%
13 Nová	10	29%	1	10%	3	30%	20%
16 Mlejnková	10	29%	0	0%	5	50%	50%
9 Suchá	4	11%	1	25%	2	50%	0%
1 Meidlová	3	9%	1	33%	2	67%	33%
6 Tesařová	3	9%	0	0%	0	0%	-67%
7 Hudyřilovová	3	9%	0	0%	2	67%	67%
8 Šimáňová	1	3%	0	0%	1	100%	100%

K2-Attacks - Transition	Σ	Σ%	=	= %	#	#%	Eff
Czech Republic 96'	59	100%	6	10%	21	36%	19%
16 Mlejnková	21	36%	2	10%	8	38%	24%
9 Suchá	18	31%	3	17%	6	33%	6%
13 Nová	7	12%	0	0%	4	57%	57%
1 Meidlová	4	7%	1	25%	1	25%	0%
14 Hrazdířová	3	5%	0	0%	0	0%	0%
6 Tesařová	2	3%	0	0%	1	50%	0%
99 Kalhousová	2	3%	0	0%	0	0%	0%

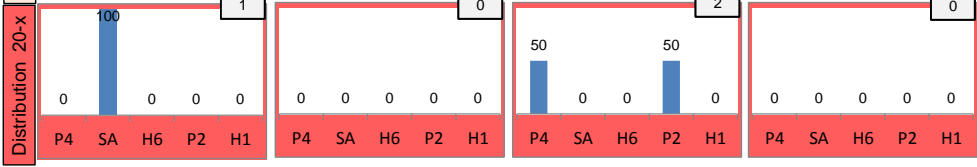
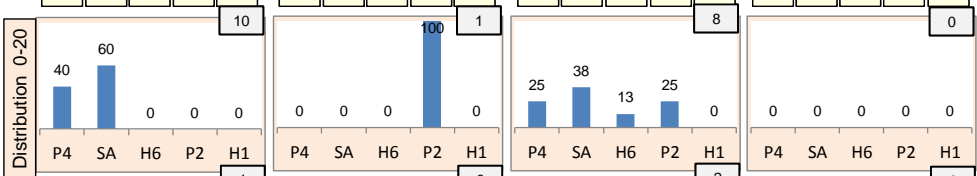
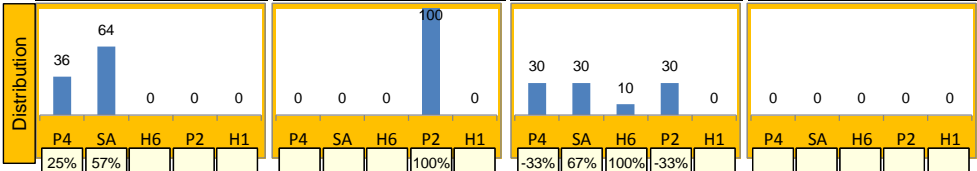
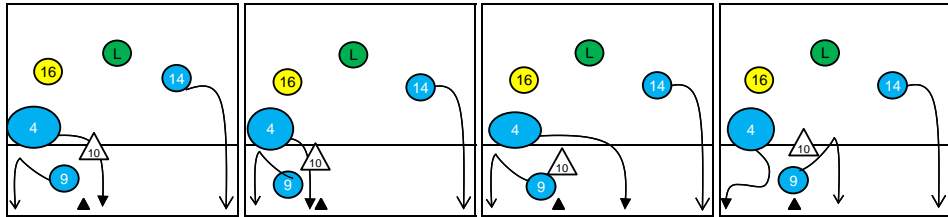


Rotation 6

Czech Republic 96'

Distribution

Base K1 50% (11) Base K2 5% (1) Base K7 45% (10) Base KD 0% (0)



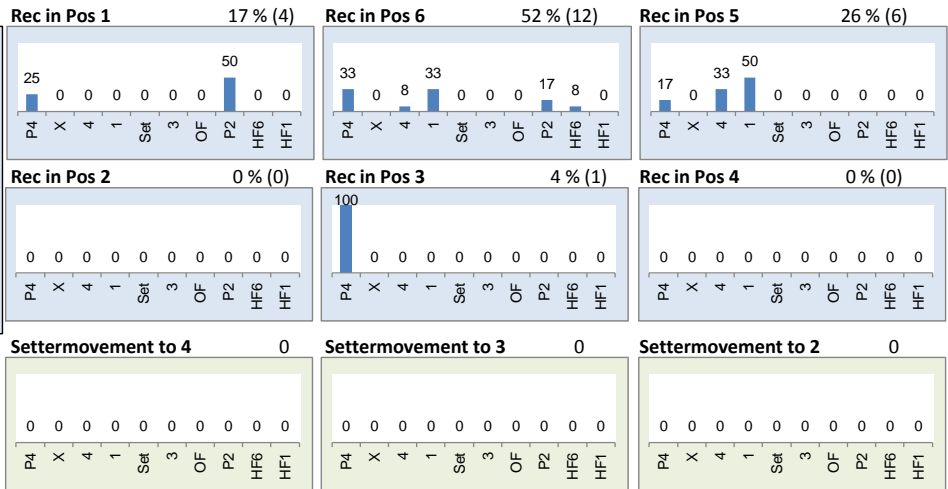
K1 after all R 42 26% 43% K1 after R#+ 23 30% 43% K2 Transition 88 22% 38%

	1	2	0	0	1	0	0	20	23%	0	-
0%	0%	50%	50%	-	-	-	-	5%	30%	-	-
11	26%	10	24%	18	43%	4	17%	10	43%	8	35%
-18%	27%	60%	70%	33%	39%	0%	25%	60%	70%	0%	13%

Reception	Σ	Σ %	=/	= / %	+	+ %	#	# %	+ # %	Eff
Czech Republic 96'	60	100%	12	20%	10	17%	13	22%	38%	18%
2 Uhlířová	28	47%	8	29%	2	7%	8	29%	36%	7%
16 Mlejnková	13	22%	1	8%	6	46%	0	0%	46%	38%
14 Hrazdířová	10	17%	2	20%	0	0%	2	20%	20%	0%
99 Kalhousová	5	8%	1	20%	1	20%	1	20%	40%	20%
1 Meidlová	3	5%	0	0%	0	0%	2	67%	67%	67%
7 Hudylivová	1	2%	0	0%	1	100%	0	0%	100%	100%

K1-Attacks after R#+	Σ	Σ %	=	= %	#	# %	Eff
Czech Republic 96'	23	100%	3	13%	10	43%	30%
13 Nová	8	35%	1	13%	5	63%	50%
14 Hrazdířová	5	22%	0	0%	0	0%	0%
9 Suchá	4	17%	1	25%	1	25%	0%
1 Meidlová	3	13%	1	33%	1	33%	0%
7 Hudylivová	1	4%	0	0%	1	100%	100%
8 Šimáňová	1	4%	0	0%	1	100%	100%
16 Mlejnková	1	4%	0	0%	1	100%	100%

K2-Attacks - Transition	Σ	Σ %	=	= %	#	# %	Eff
Czech Republic 96'	88	100%	7	8%	33	38%	22%
9 Suchá	24	27%	2	8%	9	38%	25%
16 Mlejnková	19	22%	3	16%	5	26%	0%
1 Meidlová	10	11%	0	0%	5	50%	50%
13 Nová	10	11%	1	10%	5	50%	30%
99 Kalhousová	10	11%	0	0%	4	40%	30%
14 Hrazdířová	7	8%	0	0%	1	14%	-14%
6 Tesařová	4	5%	1	25%	1	25%	0%



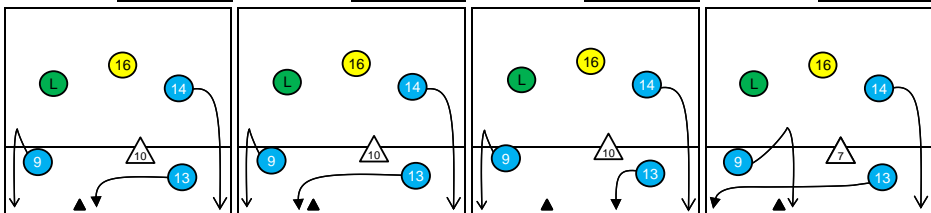
Rotation 5

Czech Republic 96'

Distribution

Base K1 14 % (4) Base K2 0 % (0) Base K7 86 % (25) Base KD 0 % (0)

K1 after all R 49 12% 39% K1 after R#+ 29 14% 41% K2 Transition 28 29% 43%

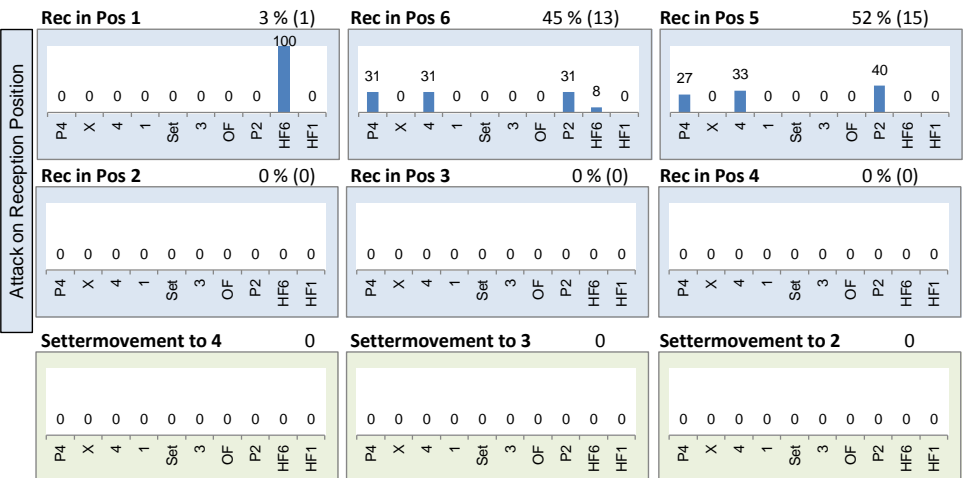


1	2%	4	8%	0	-	0	-	2	7%	0	-	0	-	4	14%	0	-
-100%	0%	25%	50%	-	-	-	-	50%	50%	-	-	-	-	0%	25%	-	-
19	39%	10	20%	15	31%	10	34%	9	31%	8	28%	8	29%	7	25%	9	32%
26%	47%	0%	30%	7%	33%	40%	60%	0%	33%	-12%	25%	38%	50%	71%	71%	0%	22%

Reception	Σ	Σ %	=	= %	+	+ %	#	# %	+ # %	Eff
Czech Republic 96'	64	100%	10	16%	13	20%	16	25%	45%	30%
16 Mlejnková	26	41%	2	8%	6	23%	6	23%	46%	38%
14 Hrazdířová	16	25%	4	25%	4	25%	3	19%	44%	19%
2 Uhlířová	8	13%	1	13%	1	13%	2	25%	38%	25%
1 Meidlová	6	9%	1	17%	2	33%	2	33%	67%	50%
99 Kalhousová	6	9%	0	0%	0	0%	3	50%	50%	50%
4 Lakomá	1	2%	1	100%	0	0%	0	0%	0%	-100%

K1-Attacks after R#+	Σ	Σ %	=	= %	#	# %	Eff
Czech Republic 96'	29	100%	5	17%	12	41%	14%
9 Suchá	9	31%	2	22%	5	56%	33%
4 Lakomá	6	21%	0	0%	2	33%	17%
1 Meidlová	3	10%	1	33%	0	0%	-33%
13 Nová	3	10%	1	33%	1	33%	-33%
14 Hrazdířová	3	10%	1	33%	2	67%	33%
16 Mlejnková	2	7%	0	0%	1	50%	50%
99 Kalhousová	2	7%	0	0%	0	0%	-50%

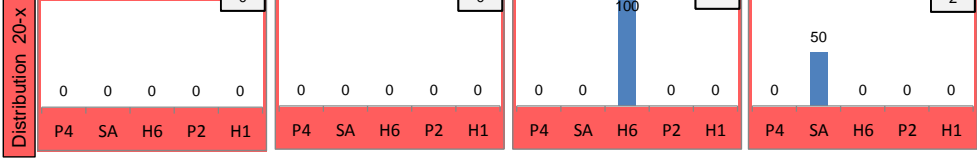
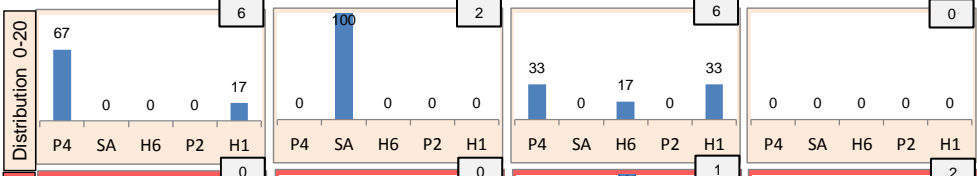
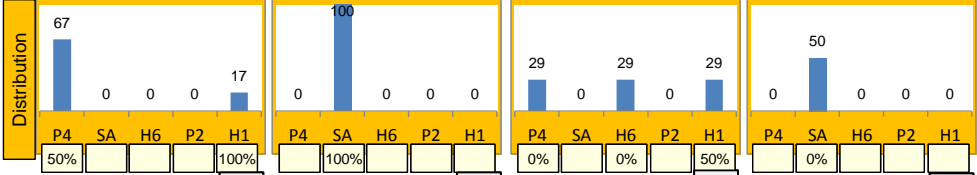
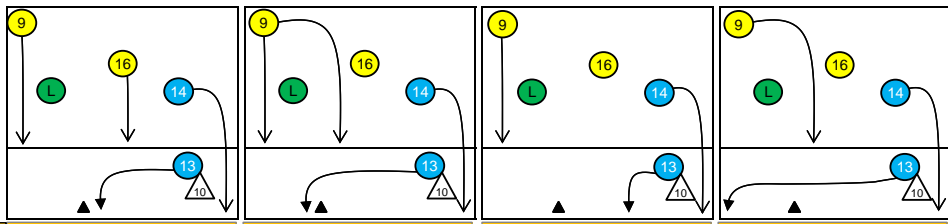
K2-Attacks - Transitor	Σ	Σ %	=	= %	#	# %	Eff
Czech Republic 96'	28	100%	2	7%	12	43%	29%
9 Suchá	7	25%	0	0%	4	57%	43%
1 Meidlová	5	18%	1	20%	2	40%	20%
4 Lakomá	4	14%	0	0%	2	50%	50%
16 Mlejnková	4	14%	0	0%	1	25%	0%
14 Hrazdířová	3	11%	1	33%	0	0%	-33%
8 Šimáňová	2	7%	0	0%	2	100%	100%
6 Tesařová	1	4%	0	0%	0	0%	0%



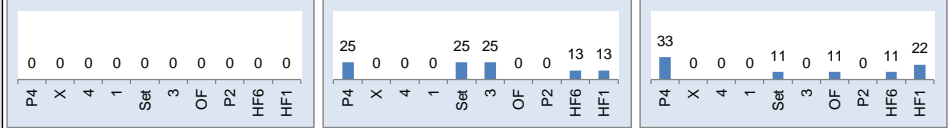
Rotation 4

Czech Republic 96'

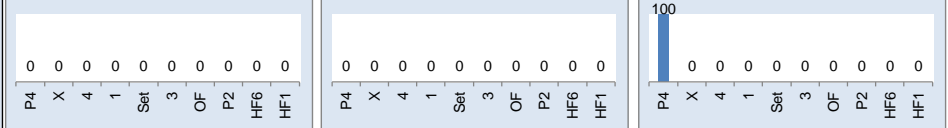
Base K1 35% (6) Base K2 12% (2) Base K7 41% (7) Base KD 12% (2)



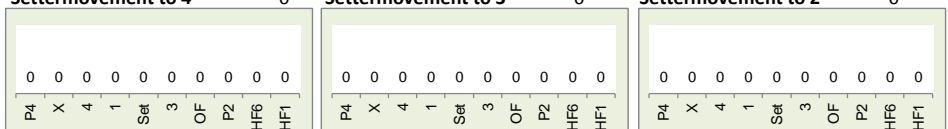
Rec in Pos 1 0% (0) Rec in Pos 6 44% (8) Rec in Pos 5 50% (9)



Rec in Pos 2 0% (0) Rec in Pos 3 0% (0) Rec in Pos 4 6% (1)



Settermovement to 4 0 Settermovement to 3 0 Settermovement to 2 0



Distribution

K1 after all R 36 17% 36% K1 after R#+ 15 40% 53% K2 Transition 41 10% 27%

	10	20%	6	17%	0	-	3	20%	2	13%	0	-	8	20%	13	32%	0	-
	20%	30%	-17%	33%	-	-	67%	67%	0%	50%	-	-	-12%	13%	15%	23%	-	-
	3	8%	1	3%	16	44%	3	20%	0	-	7	47%	3	7%	1	2%	16	39%
	67%	67%	0%	0%	19%	38%	67%	67%	-	-	29%	43%	-33%	33%	100%	100%	19%	31%

Reception	Σ	Σ %	=	= %	+	+ %	#	# %	+ # %	Eff
Czech Republic 96'	49	100%	4	8%	12	24%	6	12%	37%	29%
14 Hrazdírová	15	31%	3	20%	2	13%	4	27%	40%	20%
16 Mlejnková	14	29%	0	0%	4	29%	2	14%	43%	43%
2 Uhlířová	7	14%	0	0%	2	29%	0	0%	29%	29%
99 Kalhousová	7	14%	1	14%	3	43%	0	0%	43%	29%
1 Meidlová	3	6%	0	0%	0	0%	0	0%	0%	0%
4 Lakomá	2	4%	0	0%	1	50%	0	0%	50%	50%

K1-Attacks after R#+	Σ	Σ %	=	= %	#	# %	Eff
Czech Republic 96'	15	100%	1	7%	8	53%	40%
14 Hrazdírová	6	40%	0	0%	3	50%	50%
9 Suchá	2	13%	0	0%	2	100%	100%
13 Nová	2	13%	0	0%	2	100%	100%
16 Mlejnková	2	13%	1	50%	1	50%	0%
4 Lakomá	1	7%	0	0%	0	0%	0%
6 Tesařová	1	7%	0	0%	0	0%	0%
99 Kalhousová	1	7%	0	0%	0	0%	-100%

K2-Attacks - Transition	Σ	Σ %	=	= %	#	# %	Eff
Czech Republic 96'	41	100%	6	15%	11	27%	10%
16 Mlejnková	11	27%	1	9%	3	27%	18%
14 Hrazdírová	9	22%	0	0%	3	33%	22%
1 Meidlová	6	15%	0	0%	2	33%	33%
9 Suchá	6	15%	2	33%	1	17%	-17%
4 Lakomá	3	7%	2	67%	1	33%	-33%
99 Kalhousová	3	7%	1	33%	0	0%	-33%
6 Tesařová	2	5%	0	0%	0	0%	0%

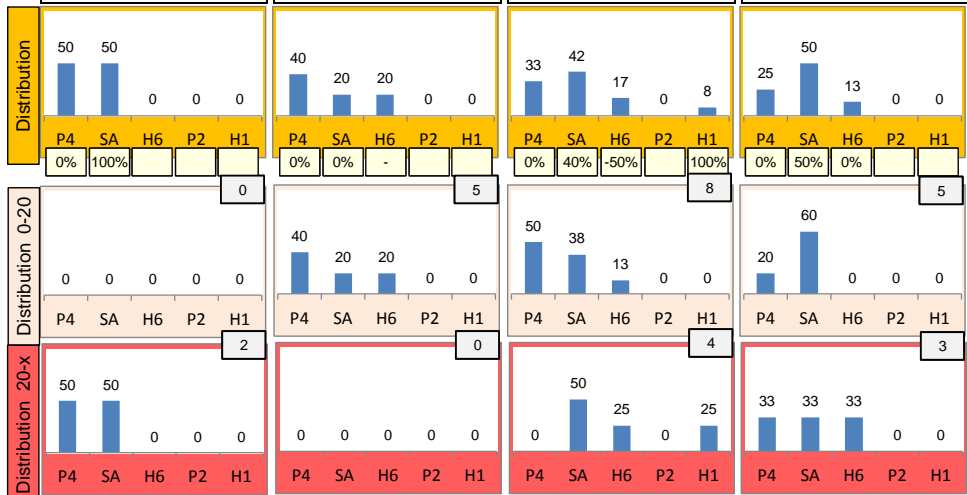
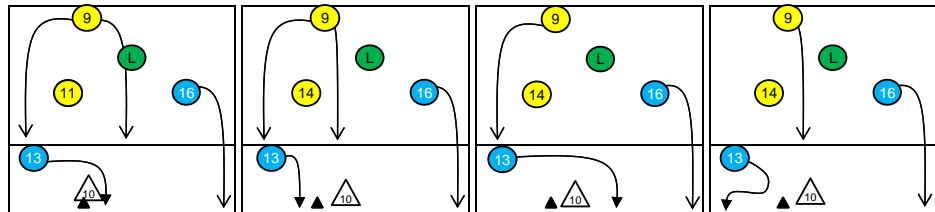
Rotation 3

Czech Republic 96'

Distribution

Base K1 7% (2) Base K2 19% (5) Base K7 44% (12) Base KD 30% (8)

K1 after all R 44 23% 41% K1 after R#+ 26 15% 35% K2 Transition 39 10% 31%

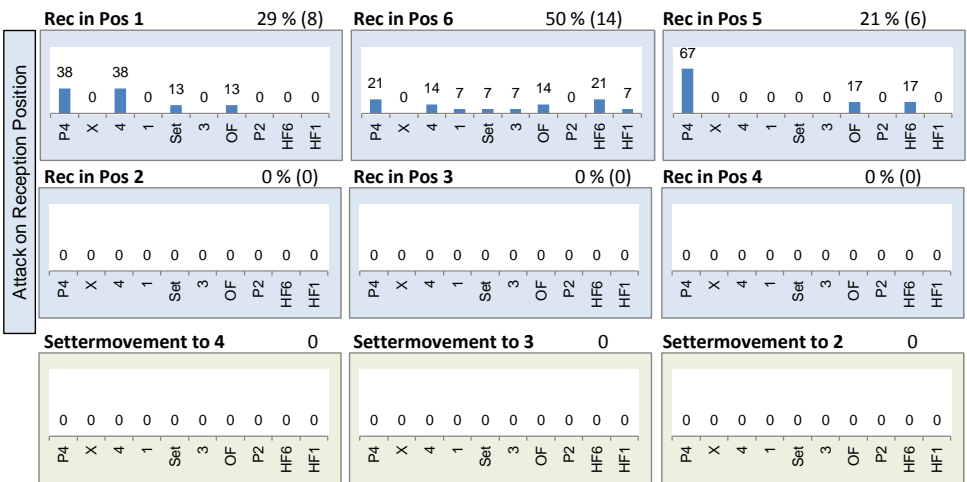


5	11%	6	14%	0	-	1	4%	4	15%	0	-	7	18%	10	26%	0	-
20%	40%	0%	33%	-	-	100%	100%	-50%	0%	-	-	0%	29%	30%	40%	-	-
5	11%	6	14%	22	50%	5	19%	6	23%	10	38%	3	8%	0	-	18	46%
40%	40%	50%	67%	18%	36%	40%	40%	50%	67%	0%	20%	0%	33%	-	-	11%	28%

Reception	Σ	Σ %	=	= %	+	+ %	#	# %	+ # %	Eff
Czech Republic 96'	60	100%	10	17%	13	22%	15	25%	47%	30%
2 Uhlířová	26	43%	5	19%	5	19%	10	38%	58%	38%
14 Hrazdířová	17	28%	3	18%	2	12%	4	24%	35%	18%
99 Kalhousová	8	13%	1	13%	4	50%	1	13%	63%	50%
16 Mlejnková	7	12%	0	0%	2	29%	0	0%	29%	29%
1 Meidlová	1	2%	0	0%	0	0%	0	0%	0%	0%
9 Suchá	1	2%	1	100%	0	0%	0	0%	0%	-100%

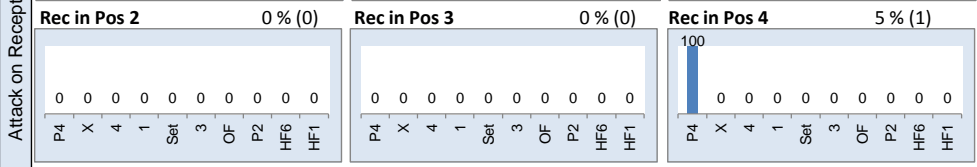
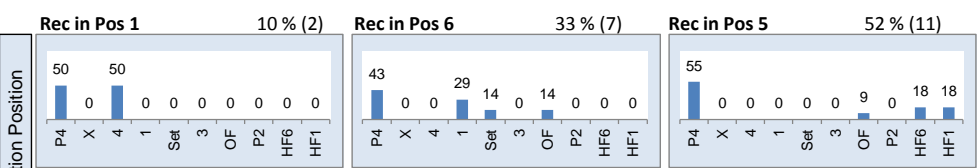
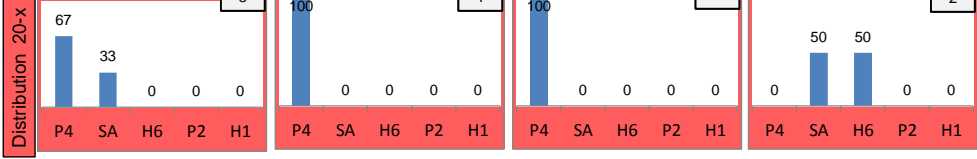
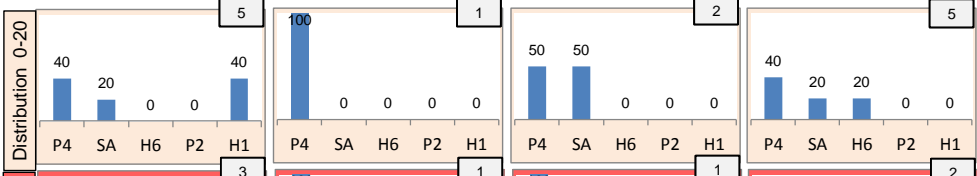
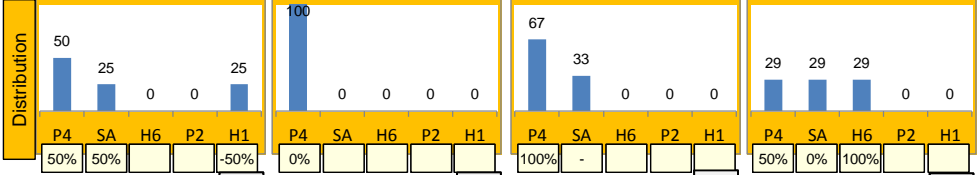
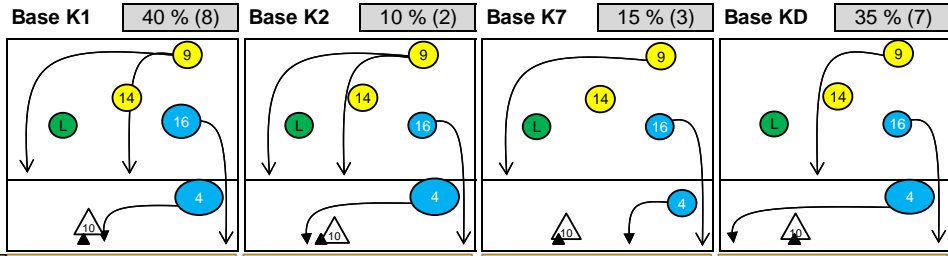
K1-Attacks after R#+	Σ	Σ %	=	= %	#	# %	Eff
Czech Republic 96'	26	100%	4	15%	9	35%	15%
16 Mlejnková	8	31%	1	13%	2	25%	12%
4 Lakomá	6	23%	1	17%	4	67%	50%
14 Hrazdířová	3	12%	1	33%	0	0%	-33%
8 Šimáňová	2	8%	0	0%	1	50%	50%
9 Suchá	2	8%	0	0%	1	50%	50%
13 Nová	2	8%	0	0%	0	0%	0%
1 Meidlová	1	4%	1	100%	0	0%	-100%

K2-Attacks - Transition	Σ	Σ %	=	= %	#	# %	Eff
Czech Republic 96'	39	100%	7	18%	12	31%	10%
16 Mlejnková	17	44%	3	18%	5	29%	12%
14 Hrazdířová	10	26%	0	0%	4	40%	30%
9 Suchá	7	18%	2	29%	2	29%	0%
4 Lakomá	3	8%	1	33%	1	33%	0%
6 Tesařová	1	3%	1	100%	0	0%	-100%
99 Kalhousová	1	3%	0	0%	0	0%	0%
1 Meidlová	0	0%	0	-	0	-	-



Rotation 2

Czech Republic 96'



Distribution

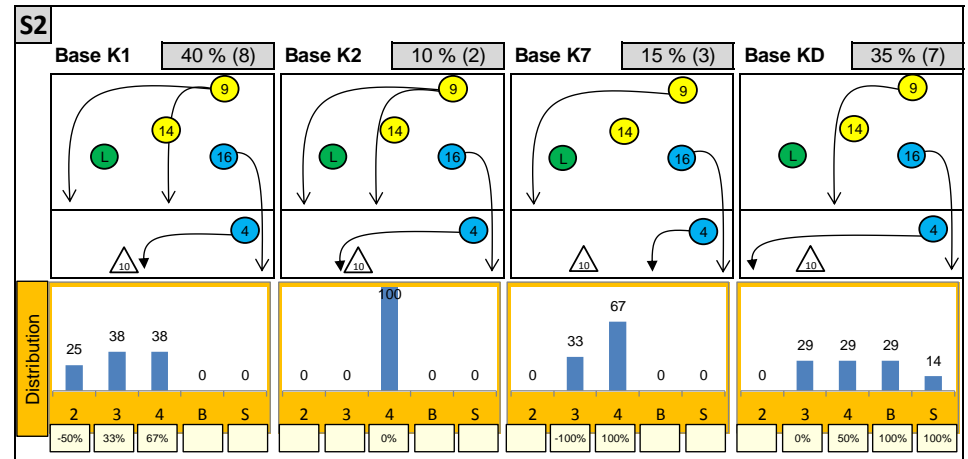
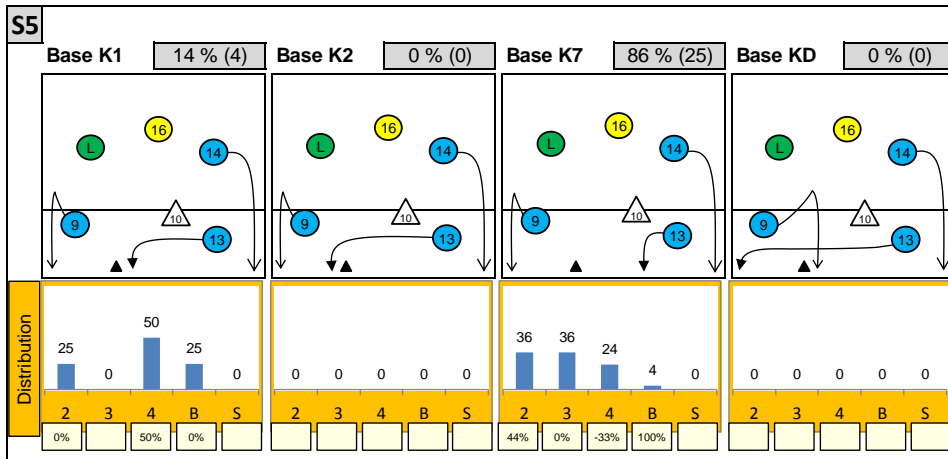
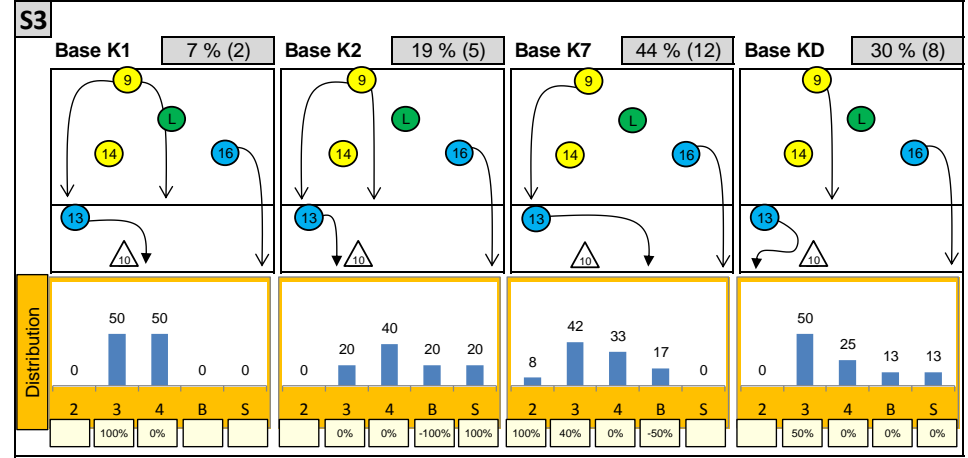
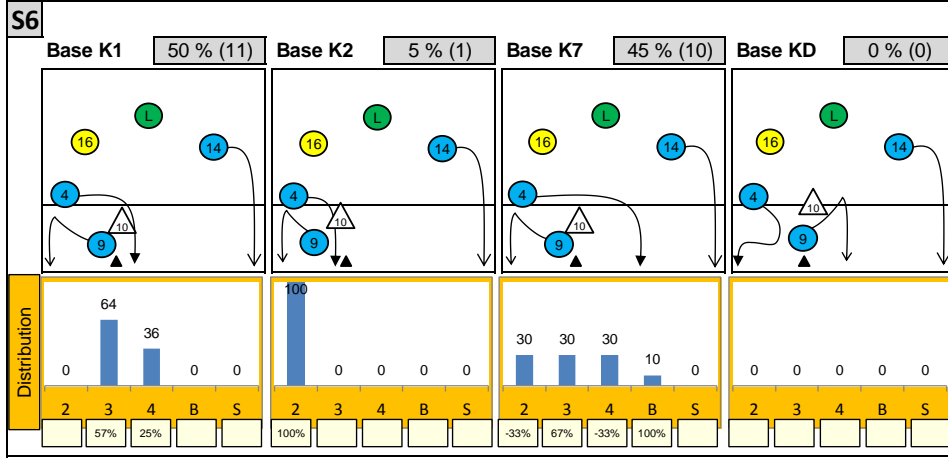
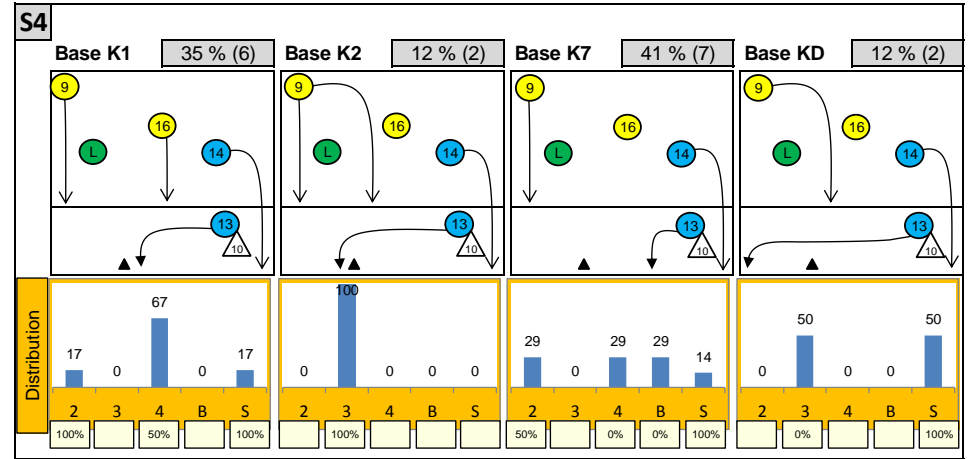
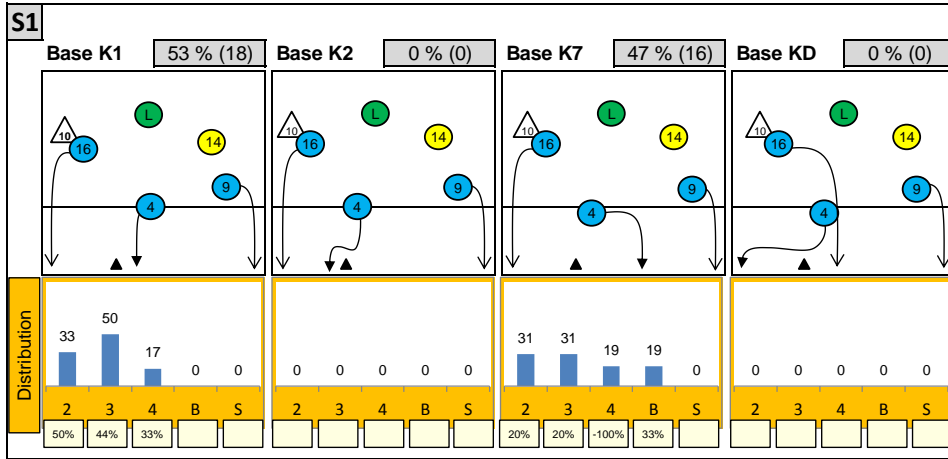
K1 after all R	41	24%	39%	K1 after R#+	20	30%	45%	K2 Transition	42	10%	29%
5	12%	4	10%	0	-	2	10%	2	10%	0	-
0%	20%	50%	50%	-	-	-50%	0%	100%	100%	-	-
2	5%	3	7%	27	66%	2	10%	3	15%	11	55%
0%	0%	0%	33%	30%	44%	0%	0%	0%	33%	45%	55%
11	26%	12	29%	0	-	11	26%	12	29%	0	-
-9%	27%	-8%	8%	-	-	-9%	27%	-8%	8%	-	-
1	2%	2	5%	16	38%	1	2%	2	5%	16	38%
-100%	0%	50%	50%	38%	44%	-100%	0%	50%	50%	38%	44%

Reception	Σ	Σ %	=/	=/ %	+	+ %	#	# %	+ # %	Eff
Czech Republic 96'	51	100%	5	10%	11	22%	10	20%	41%	31%
14 Hrazdírová	21	41%	3	14%	0	0%	4	19%	19%	5%
99 Kalhousová	11	22%	1	9%	2	18%	2	18%	36%	27%
16 Mlejnková	10	20%	0	0%	5	50%	4	40%	90%	90%
2 Uhlířová	6	12%	0	0%	2	33%	0	0%	33%	33%
1 Meidlová	2	4%	0	0%	2	100%	0	0%	100%	100%
9 Suchá	1	2%	1	100%	0	0%	0	0%	0%	-100%

K1-Attacks after R#+	Σ	Σ %	=	= %	#	# %	Eff
Czech Republic 96'	20	100%	3	15%	9	45%	30%
16 Mlejnková	9	45%	1	11%	6	67%	56%
8 Šimáňová	3	15%	0	0%	1	33%	33%
6 Tesařová	2	10%	1	50%	0	0%	-50%
9 Suchá	2	10%	0	0%	2	100%	100%
1 Meidlová	1	5%	0	0%	0	0%	0%
7 Hudylivová	1	5%	1	100%	0	0%	-100%
13 Nová	1	5%	0	0%	0	0%	0%

K2-Attacks - Transition	Σ	Σ %	=	= %	#	# %	Eff
Czech Republic 96'	42	100%	7	17%	12	29%	10%
16 Mlejnková	14	33%	1	7%	7	50%	43%
9 Suchá	6	14%	3	50%	0	0%	-67%
14 Hrazdírová	6	14%	1	17%	0	0%	-17%
6 Tesařová	5	12%	0	0%	3	60%	60%
99 Kalhousová	5	12%	1	20%	1	20%	0%
1 Meidlová	3	7%	0	0%	0	0%	0%
8 Šimáňová	2	5%	1	50%	0	0%	-50%

Attackdistribution depending on Settercalls - Czech Republic 96'

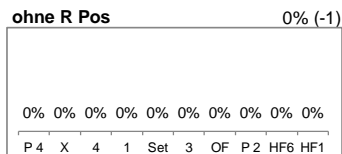
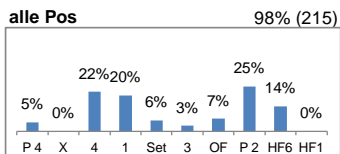
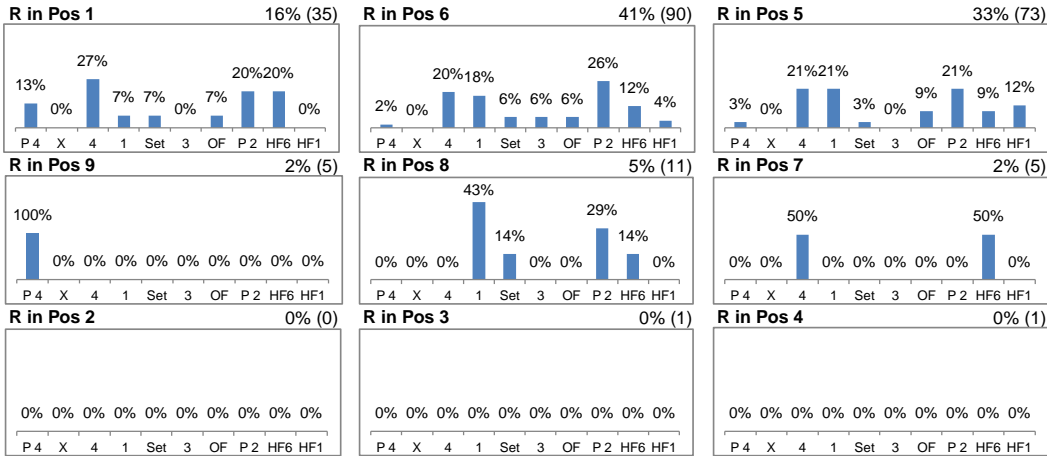


2: Attack of Opposite 3: Attack of Middleblocker 4: Attack of Outside B: Attack of Backrow

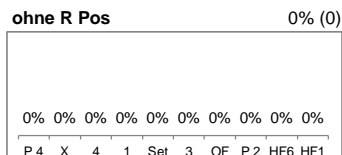
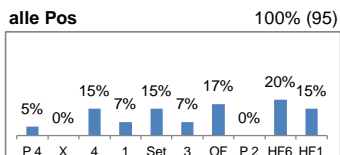
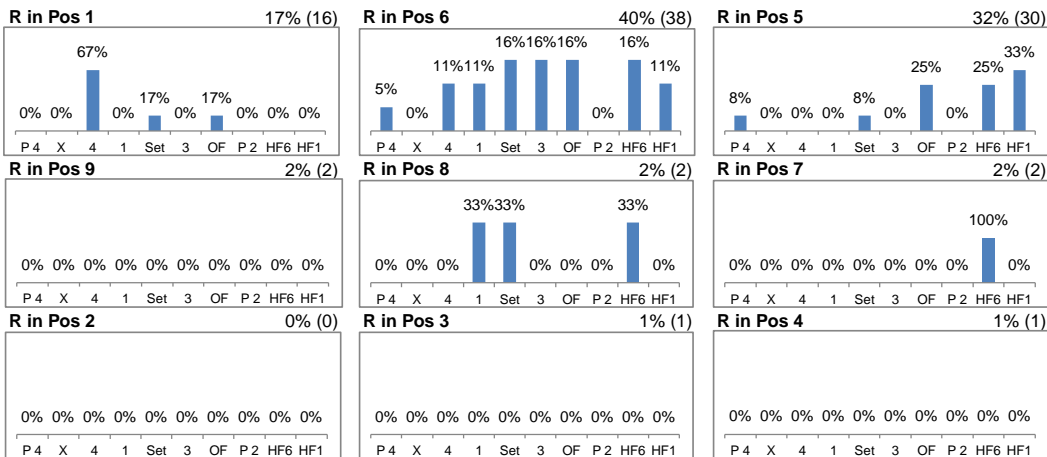
S: Attack of Setter xx%: Efficiency of Attacks (-100% to +100%)

Attacks depending on Reception Position - Czech Republic 96'

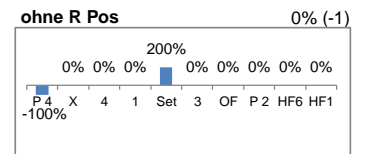
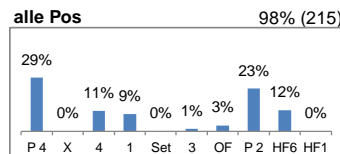
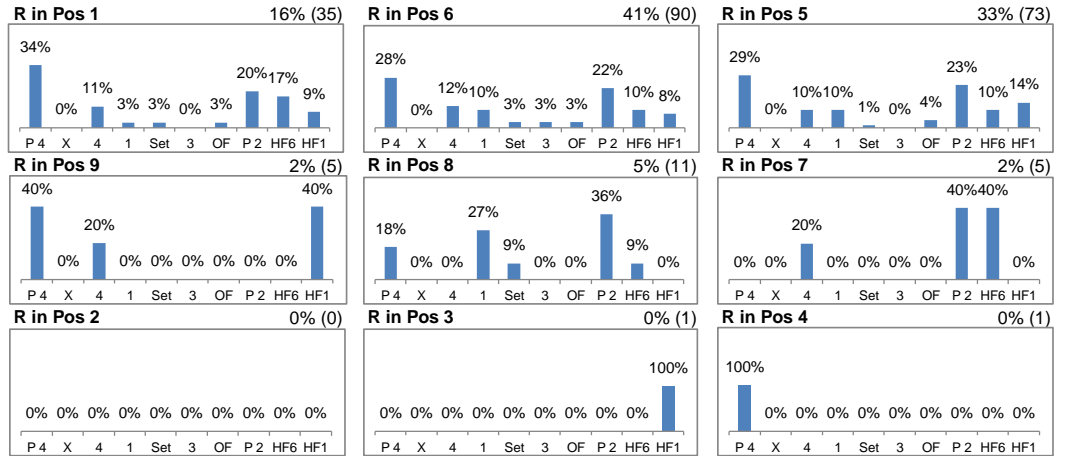
Setter back (S1, S6, S5) - R#+



Setter front (S4, S3, S2) - R#+



Setter back (S1, S6, S5) - all Receptions



Setter front (S4, S3, S2) - all Receptions

