

Formazioni iniziali e rotazioni di partenza

Formazioni iniziali

Giocatore	Set gi	Titolar	Alzat	1° ma	2° ce	Oppo	2° ma	1° ce	Batt. M	Batt. Q	Rice	Att
Netherlands 2016	22	-	-	-	-	-	-	-	353	180	399	593
7 JORNA	8	-	-	-	-	-	-	-	0	0	10	0
5 SPARIDANS	15	-	-	-	-	-	-	-	0	0	80	0
19 DRONKERS	10	-	-	-	-	-	-	-	0	0	33	0
3 GARDEREN van	16	-	-	-	-	-	-	-	0	58	73	77
4 HORST ter	10	-	-	-	-	-	-	-	24	14	52	60
10 RAUWERDINK	6	-	-	-	-	-	-	-	31	0	64	34
18 ANDRINGA	16	-	-	-	-	-	-	-	50	0	72	63
12 DIJK van	10	-	-	-	-	-	-	-	0	46	1	100
16 MAAT ter	18	-	-	-	-	-	-	-	0	61	0	100
6 DIEFENBACH	21	-	-	-	-	-	-	-	92	1	8	66
11 VRIES de	1	-	-	-	-	-	-	-	3	0	0	2
15 KOELEWIJN	14	-	-	-	-	-	-	-	50	0	5	42
17 PARKINSON	2	-	-	-	-	-	-	-	6	0	0	2
20 PLAK	7	-	-	-	-	-	-	-	26	0	0	24
1 HAARLEM van	18	-	-	-	-	-	-	-	57	0	1	19
2 KEEMINK	8	-	-	-	-	-	-	-	14	0	0	4

Rotazioni di partenza

Totale	Tutti i set	1. set	2. set			
In battuta	Tutti i set	1. set	2. set	3. set	4. set	5. set
In ricezione	Tutti i set	1. set	2. set	3. set	4. set	5. set

Total Worksheet - 07 - Battuta

(5) FIN, FIN, FIN, GER16, GER16

BATTUTA TOTALE															
Nome	Totale	Ind.	(#)%	(/)%	(+)%	Pos%	Ace	Ace/	(!)%	(-)%	(=)%	(=)	Err./S	Err./A	
n.\$	Netherlands 2016	530	35	6%	5%	15%	26%	32	1.5	13%	45%	15%	79	3.6	2.5
n.3	3 GARDEREN van	58	34.0	5%	10%	12%	27%	3	0.2	12%	34%	26%	15	0.9	5.0
n.4	4 HORST ter	38	30.0	5%	5%	18%	28%	2	0.2	8%	32%	32%	12	1.2	6.0
n.10	10 RAUWERDINK	31	36.0	.	3%	26%	29%	.	0.0	13%	58%	.	.	0.0	---
n.18	18 ANDRINGA	50	32.0	.	6%	10%	16%	.	0.0	18%	56%	10%	5	0.3	---
n.12	12 DIJK van	46	36.0	9%	9%	13%	31%	4	0.4	9%	39%	22%	10	1.0	2.5
n.16	16 MAAT ter	61	42.0	21%	2%	18%	41%	13	0.7	11%	25%	23%	14	0.8	1.1
n.6	6 DIEFENBACH	93	37.0	4%	8%	15%	27%	4	0.2	15%	52%	6%	6	0.3	1.5
n.15	15 KOELEWIJN	50	36.0	6%	.	18%	24%	3	0.2	20%	50%	6%	3	0.2	1.0
n.17	17 PARKINSON	6	23.0	.	.	17%	17%	.	0.0	17%	33%	33%	2	1.0	---
n.20	20 PLAK	26	31.0	.	4%	15%	19%	.	0.2	12%	62%	8%	2	0.6	---
n.1	1 HAARLEM van	57	31.0	5%	4%	9%	18%	3	0.2	14%	51%	18%	10	0.6	3.3
n.2	2 KEEMINK	14	33.0	.	.	29%	29%	.	---	.	71%	.	.	---	---

BATTUTA JUMP															
Nome	Totale	Ind.	(#)%	(/)%	(+)%	Pos%	Ace	Ace/	(!)%	(-)%	(=)%	Err.	Err./S	Err./A	
n.\$	Netherlands 2016	180	37	0	7%	15%	22%	21	1.0	11%	31%	26%	46	2.1	2.2
n.3	3 GARDEREN van	58	34	5%	10%	12%	27%	3	0.2	12%	34%	26%	15	0.9	5.0
n.4	4 HORST ter	14	27	7%	7%	14%	28%	1	0.1	7%	14%	50%	7	0.7	7.0
n.10	10 RAUWERDINK	.	.	---	---	---	---	.	0.0	---	---	---	.	0.0	---
n.18	18 ANDRINGA	.	.	---	---	---	---	.	0.0	---	---	---	.	0.0	---
n.12	12 DIJK van	46	36	9%	9%	13%	31%	4	---	9%	39%	22%	10	---	2.5
n.16	16 MAAT ter	61	42	21%	2%	18%	41%	13	---	11%	25%	23%	14	---	1.1
n.6	6 DIEFENBACH	1	50	.	.	100%	100%	.	0.0	0.0	---
n.15	15 KOELEWIJN	.	.	---	---	---	---	.	0.0	---	---	---	.	0.0	---
n.17	17 PARKINSON	.	.	---	---	---	---	.	0.0	---	---	---	.	0.0	---
n.20	20 PLAK	.	.	---	---	---	---	.	0.0	---	---	---	.	0.0	---
n.1	1 HAARLEM van	.	.	---	---	---	---	.	0.0	---	---	---	.	0.0	---
n.2	2 KEEMINK	.	.	---	---	---	---	.	---	---	---	---	.	---	---

BATTUTA FLOAT															
Nome	Totale	Ind.	(#)%	(/)%	(+)%	Pos%	Ace	Ace/	(!)%	(-)%	(=)%	Err.	Err./S	Err./A	
n.\$	Netherlands 2016	350	34	0	4%	15%	19%	11	0.5	15%	53%	9%	33	1.5	3.0
n.3	3 GARDEREN van	.	.	---	---	---	---	.	0.2	---	---	---	.	0.9	---
n.4	4 HORST ter	24	32	4%	4%	21%	29%	1	0.1	8%	42%	21%	5	0.7	5.0
n.10	10 RAUWERDINK	31	36	.	3%	26%	29%	.	0.0	13%	58%	.	.	0.0	---

Total Worksheet - 07 - Battuta

n.18	18 ANDRINGA	50	32	.	6%	10%	16%	.	0.0	18%	56%	10%	5	0.0	---
n.12	12 DIJK van	.	.	---	---	---	---	.	---	---	---	---	.	---	---
n.16	16 MAAT ter	.	.	---	---	---	---	.	---	---	---	---	.	---	---
n.6	6 DIEFENBACH	92	37	4%	8%	14%	26%	4	0.0	15%	52%	7%	6	0.0	1.5
n.15	15 KOELEWIJN	50	36	6%	.	18%	24%	3	0.0	20%	50%	6%	3	0.0	1.0
n.17	17 PARKINSON	6	23	.	.	17%	17%	.	0.0	17%	33%	33%	2	0.0	---
n.20	20 PLAK	26	31	.	4%	15%	19%	.	0.0	12%	62%	8%	2	0.0	---
n.1	1 HAARLEM van	57	31	5%	4%	9%	18%	3	0.0	14%	51%	18%	10	0.0	3.3
n.2	2 KEEMINK	14	33	.	.	29%	29%	.	---	.	71%	.	.	---	---
- 00	0000														

Total Worksheet - 02 - Ricezione

(5) FIN, FIN, FIN, GER16, GER16

RICEZIONE TOTALE											RICEZIONE JUMP						RICEZIONE FLOAT													
Nome	Totale	Ind.	Pos%	(!)%	(/)%	(=)%	Err.	Err.%	Err./Set	Totale	Ind.	Pos%	(!)%	(/)%	(=)%	Err.	Err./Set	Totale	Ind.	Pos%	(!)%	(/)%	(=)%	Err.	Err./Set					
n.\$ Netherlands 2016	374	63	53%	21%	5%	4%	33	9%	1.5	102	58	43%	23%	7%	7%	14%	0.6	272	64	57%	21%	4%	3%	7%	0.9					
n.5 5 SPARIDANS	80	68	58%	30%	1%	1%	2	2%	0.1	28	68	57%	25%	.	.	.	0.0	52	68	57%	33%	2%	2%	4%	0.1					
n.19 19 DRONKERS	33	64	57%	21%	3%	6%	3	9%	0.1	12	58	50%	17%	8%	8%	16%	0.1	21	67	62%	24%	.	5%	5%	0.0					
n.3 3 GARDEREN van	73	60	44%	22%	5%	4%	7	9%	0.3	9	61	66%	.	.	11%	11%	0.0	64	60	41%	25%	6%	3%	9%	0.3					
n.4 4 HORST ter	52	55	42%	10%	12%	4%	8	16%	0.4	15	57	40%	13%	13%	.	13%	0.1	37	55	43%	8%	11%	5%	16%	0.3					
n.10 10 RAUWERDINK	64	63	58%	19%	3%	6%	6	9%	0.3	13	43	16%	31%	8%	23%	31%	0.2	51	68	68%	16%	2%	2%	4%	0.1					
n.18 18 ANDRINGA	72	64	61%	21%	4%	6%	7	10%	0.3	25	54	32%	32%	12%	8%	20%	0.2	47	70	76%	15%	.	4%	4%	0.1					
n.0 0???	.	.	---	---	((---))	((---))	.	---	0.0	.	.	---	---	((---))	((---))	---	0.0	.	.	---	---	((---))	((---))	---	0.0					
n.0 0???	.	.	---	---	---	---	.	---	0.0	.	.	---	---	---	---	---	0.0	.	.	---	---	---	---	---	0.0					
RICEZIONE JUMP											RICEZIONE FLOAT																			
Nome	Sx			Cx			Dx			Alto			Basso			Sx			Cx			Dx			Alto			Basso		
	Totale	Pos%	Err.%	Totale	Pos%	Err.%	Totale	Pos%	Err.%	Totale	Pos%	Err.%	Totale	Pos%	Err.%	Totale	Pos%	Err.%	Totale	Pos%	Err.%	Totale	Pos%	Err.%	Totale	Pos%	Err.%	Totale	Pos%	Err.%
n.5 5 SPARIDANS	1	100%	.	4	25%	.	.	---	---	1	100%	.	.	---	---	.	---	---	1	100%	.	1	100%	.	2	100%	.	1	100%	.
n.19 19 DRONKERS	.	---	---	1	100%	.	.	---	---	.	---	---	.	---	---	.	---	---	.	---	---	1	.	100%	.	---	---	.	---	---
n.3 3 GARDEREN van	.	---	---	.	---	---	.	---	---	.	---	---	.	---	---	.	---	---	1	.	100%	.	---	---	1	.	100%	.	---	---
n.4 4 HORST ter	.	---	---	.	---	---	.	---	---	.	---	---	.	---	---	1	.	100%	1	.	100%	.	---	---	.	---	---	.	---	---
n.10 10 RAUWERDINK	1	.	100%	.	---	---	.	---	---	.	---	---	2	.	.	5	60%	20%	1	100%	.	4	100%	.	.	---	---	5	60%	.
n.18 18 ANDRINGA	.	---	---	4	25%	50%	.	---	---	.	---	---	.	---	---	2	100%	.	.	---	---	---	---	.	---	---	1	.	100%	
n.0 0???	.	---	---	.	---	---	.	---	---	.	---	---	.	---	---	.	---	---	.	---	---	.	---	---	.	---	---	.	---	---

Total Worksheet - 03 - Attacco prima palla

(5) FIN, FIN, FIN, GER16, GER16

ATTACCO PRIMA PALLA																																									
Nome		Tot.	Tot.%	Eff.%	(+)	(+)%	(#)	(#)%	(#)/S	pos.%	(/)	(/)%	(=)	(=)%	Err.%	Err./S	Quick					Alta					Pipe/Schema					Primo tempo									
																	Tot.	#	+	/	=	Tot.	#	+	/	=	Tot.	#	+	/	=	Tot.	#	+	/	=					
Quick		167	50%	32%	9	5%	80	48%	3.6	53%	18	11%	8	5%	16%	1.2																									
Alta		54	16%	20%	5	9%	20	37%	0.9	46%	5	9%	4	7%	17%	0.4																									
Pipe/Schema		23	7%	43%	0	0%	16	70%	0.7	70%	1	4%	5	22%	26%	0.3																									
Primo tempo		92	27%	64%	6	7%	68	74%	3.1	80%	5	5%	4	4%	10%	0.4																									
Totale		336	X	36%	20	6%	184	55%	8.4	---	29	9%	21	6%	15%	2.3																									
n.3	3 GARDEREN van	41	12%	24%	1	2%	19	46%	1.2	48%	5	12%	4	10%	22%	1.4	22	9	0	3	3	11	4	1	1	0	8	6	0	1	1	0	0	0	0	0	0	0			
n.4	4 HORST ter	32	10%	31%	0	0%	15	47%	1.5	47%	3	9%	2	6%	15%	1.5	15	7	0	1	0	10	3	0	2	1	7	5	0	0	0	1	0	0	0	0	0	0			
n.1	10 RAUWERDINK	20	6%	35%	4	20%	10	50%	1.7	70%	3	15%	0	0%	15%	2.5	14	7	2	2	0	3	0	2	1	0	3	3	0	0	0	0	0	0	0	0	0	0			
n.1	18 ANDRINGA	33	10%	12%	1	3%	14	42%	0.9	45%	4	12%	6	18%	30%	1.9	21	10	1	3	1	9	3	0	1	3	3	1	0	0	2	0	0	0	0	0	0				
n.1	12 DIJK van	61	18%	39%	5	8%	30	49%	3.0	57%	2	3%	4	7%	10%	1.0	49	25	4	2	3	10	4	1	0	0	2	1	0	0	1	0	0	0	0	0	0				
n.1	16 MAAT ter	56	17%	34%	3	5%	27	48%	1.5	53%	7	12%	1	2%	14%	0.8	45	21	2	7	1	11	6	1	0	0	0	0	0	0	0	0	0	0	0	0	0				
n.6	6 DIEFENBACH	52	15%	60%	5	10%	37	71%	1.8	81%	3	6%	3	6%	12%	0.6	1	1	0	0	0	0	0	0	0	0	0	0	0	0	0	0	0	0	51	36	5	3	3		
n.1	15 KOELEWIJN	23	7%	65%	0	0%	18	78%	1.3	78%	2	9%	1	4%	13%	0.9	0	0	0	0	0	0	0	0	0	0	0	0	0	0	0	0	0	0	0	23	18	0	2	1	
n.1	17 PARKINSON	1	0%	100%	0	0%	1	100%	0.5	100%	0	0%	0	0%	0%	0.0	0	0	0	0	0	0	0	0	0	0	0	0	0	0	0	0	0	0	0	0	1	1	0	0	0
n.2	20 PLAK	17	5%	76%	1	6%	13	76%	1.9	82%	0	0%	0	0%	0%	0.0	0	0	0	0	0	0	0	0	0	0	0	0	0	0	0	0	0	0	0	0	17	13	1	0	0
ATTACCO PRIMA PALLA																																									
Nome		Tot.	Tot.%	Ricezione (#) e (+)					Ricezione (#)					Ricezione (+)					Ricezione (!)					Ricezione (-)																	
				(#)	(#)%	(/)	(=)	Err.%	Tot.	Tot.%	(#)	(#)%	(/)	(=)	Err.%	Tot.	Tot.%	(#)	(#)%	(/)	(=)	Err.%	Tot.	Tot.%	(#)	(#)%	(/)	(=)	Err.%	Tot.	Tot.%	(#)	(#)%	(/)	(=)	Err.%					
Netherlands 2016		204	100%	128	63%	7%	4%	11%	85	100%	62	73%	5%	6%	11%	119	100%	---	55%	8%	3%	11%	82	100%	42	51%	11%	9%	20%	63	100%	21	33%	10%	10%	20%					
Opposti																																									
Nome		Tot.	Tot.%	Ricezione (#) e (+)					Ricezione (#)					Ricezione (+)					Ricezione (!)					Ricezione (-)																	
				(#)	(#)%	(/)	(=)	Err.%	Tot.	Tot.%	(#)	(#)%	(/)	(=)	Err.%	Tot.	Tot.%	(#)	(#)%	(/)	(=)	Err.%	Tot.	Tot.%	(#)	(#)%	(/)	(=)	Err.%	Tot.	Tot.%	(#)	(#)%	(/)	(=)	Err.%					
n.1	12 DIJK van	33	16%	18	55%	3%	6%	9%	10	12%	8	80%	0%	0%	0%	23	19%	---	43%	4%	9%	13%	19	23%	9	47%	0%	11%	11%	9	14%	3	33%	11%	0%	11%					
n.1	16 MAAT ter	23	11%	13	57%	17%	0%	17%	9	11%	7	78%	11%	0%	11%	14	12%	---	43%	21%	0%	21%	17	21%	7	41%	18%	6%	24%	16	25%	7	44%	0%	0%	0%					
Martelli																																									
Nome		Tot.	Tot.%	Ricezione (#) e (+)					Ricezione (#)					Ricezione (+)					Ricezione (!)					Ricezione (-)																	
				(#)	(#)%	(/)	(=)	Err.%	Tot.	Tot.%	(#)	(#)%	(/)	(=)	Err.%	Tot.	Tot.%	(#)	(#)%	(/)	(=)	Err.%	Tot.	Tot.%	(#)	(#)%	(/)	(=)	Err.%	Tot.	Tot.%	(#)	(#)%	(/)	(=)	Err.%					
n.3	3 GARDEREN van	17	8%	9	53%	18%	6%	24%	8	9%	5	62%	25%	12%	37%	9	8%	---	44%	11%	0%	11%	11	13%	5	45%	9%	18%	27%	13	21%	5	38%	8%	8%	16%					
n.4	4 HORST ter	13	6%	6	46%	0%	8%	8%	4	5%	2	50%	0%	25%	25%	9	8%	---	44%	0%	0%	0%	10	12%	7	70%	10%	0%	10%	9	14%	2	22%	22%	11%	33%					
n.1	15 KOELEWIJN	21	10%	17	81%	10%	0%	10%	12	14%	11	92%	0%	0%	0%	9	8%	---	67%	22%	0%	22%	1	1%	1	100%	0%	0%	0%	1	2%	0	0%	0%	100%	100%					
n.1	18 ANDRINGA	17	8%	9	53%	6%	12%	18%	6	7%	3	50%	0%	33%	33%	11	9%	---	55%	9%	0%	9%	7	9%	2	29%	29%	14%	43%	9	14%	3	33%	11%	33%	44%					
Centrali																																									
Nome		Tot.	Tot.%	Ricezione (#) e (+)					Ricezione (#)					Ricezione (+)					Ricezione (!)					Ricezione (-)																	
				(#)	(#)%	(/)	(=)	Err.%	Tot.	Tot.%	(#)	(#)%	(/)	(=)	Err.%	Tot.	Tot.%	(#)	(#)%	(/)	(=)	Err.%	Tot.	Tot.%	(#)	(#)%	(/)	(=)	Err.%	Tot.	Tot.%	(#)	(#)%	(/)	(=)	Err.%					
n.6	6 DIEFENBACH	45	22%	33	73%	4%	4%	8%	20	24%	14	70%	5%	5%	10%	25	21%	---	76%	4%	4%	8%	7	9%	4	57%	14%	14%	28%	0	0%	0	---	---	---	---					
n.1	15 KOELEWIJN	21	10%	17	81%	10%	0%	10%	12	14%	11	92%	0%	0%	0%	9	8%	---	67%	22%	0%	22%	1	1%	1	100%	0%	0%	0%	1	2%	0	0%	0%	100%	100%					
n.1	17 PARKINSON	0	0%	0	---	---	---	---	0	0%	0	---	---	---	---	0	0%	---	---	---	---	---	1	1%	1	100%	0%	0%	0%	0	0%	0	---	---	---	---					
n.2	20 PLAK	14	4%	11	79%	0%	0%	0%	7	2%	6	86%	0%	0%	0%	7	2%	---	71%	0%	0%	0%	3	1%	2	67%	0%	0%	0%	0	0%	0	---	---	---	---					
Alzatori																																									
Nome		Tot.	Tot.%	Ricezione (#) e (+)					Ricezione (#)					Ricezione (+)					Ricezione (!)					Ricezione (-)																	
				(#)	(#)%	(/)	(=)	Err.%	Tot.	Tot.%	(#)	(#)%	(/)	(=)	Err.%	Tot.	Tot.%	(#)	(#)%	(/)	(=)	Err.%	Tot.	Tot.%	(#)	(#)%	(/)	(=)	Err.%	Tot.	Tot.%	(#)	(#)%	(/)	(=)	Err.%					

Total Worksheet - 03 - Attacco prima palla

n.2 2 KEEMINK



Total Worksheet - 04 - Tipo di attacco

(5) FIN, FIN, FIN, GER16, GER16

n.\$	Nome	UNO classica						C					DOPPIA C					SETTE classica						DUE													
		Tot.	(#)	(#)%	(/)%	(=)%	Eff.	Tot.	(#)	(#)%	(/)%	(=)%	Eff.	Tot.	(#)	(#)%	(/)%	(=)%	Eff.	Tot.	(#)	(#)%	(/)%	(=)%	Eff.	Tot.	(#)	(#)%	(/)%	(=)%	Eff.						
n.\$	Netherlands 2016	29	22	76%	3%	3%	70%	16	11	69%	12%	0%	57%	18	15	83%	0%	0%	83%	21	16	76%	0%	10%	66%							1	1	100	0%	0%	1%
n.06	6 DIEFENBACH	14	11	79%	0%	7%	72%	6	3	50%	33%	0%	17%	16	13	81%	0%	0%	81%	7	3	43%	0%	29%	14%							0	0	---	(---)	(---)	---
n.15	15 KOELEWIJN	5	4	80%	20%	0%	60%	7	5	71%	0%	0%	71%	2	2	100	0%	0%	100	11	10	91%	0%	0%	91%							0	0	---	(---)	(---)	---
n.17	17 PARKINSON	2	2	100	0%	0%	100	0	0	(---)	(---)	(---)	---	0	0	(---)	(---)	(---)	---	0	0	0	(---)	(---)	---							0	0	---	(---)	(---)	---
n.20	20 PLAK	8	5	62%	0%	0%	62%	3	3	100	0%	0%	100	0	0	(---)	(---)	(---)	---	3	3	100	0%	0%	100							1	1	100	0%	0%	1%
n.\$	Nome	UNO centro rete						SETTE centro rete					DUE centro rete																								
		Tot.	(#)	(#)%	(/)%	(=)%	Eff.	Tot.	(#)	(#)%	(/)%	(=)%	Eff.	Tot.	(#)	(#)%	(/)%	(=)%	Eff.																		
n.\$	Netherlands 2016	17	13	76%	0%	0%	76%							7	4	57%	29%	0%	28%							0	0	---	(---)	(---)	---						
n.06	6 DIEFENBACH	11	9	82%	0%	0%	82%							3	1	33%	33%	0%	0%							0	0	---	(---)	(---)	---						
n.15	15 KOELEWIJN	3	2	67%	0%	0%	67%							4	3	75%	25%	0%	50%							0	0	---	(---)	(---)	---						
n.17	17 PARKINSON	0	0	(---)	(---)	(---)	---							0	0	0	(---)	(---)	---							0	0	---	(---)	(---)	---						
n.20	20 PLAK	3	2	67%	0%	0%	67%							0	0	0	(---)	(---)	---							0	0	---	(---)	(---)	---						
n.\$	Nome	VICINO verso 4						LONTANO verso 4					DUE verso 4					VICINO verso 2						LONTANO verso 2						DUE verso 2							
		Tot.	(#)	(#)%	(/)%	(=)%	Eff.	Tot.	(#)	(#)%	(/)%	(=)%	Eff.	Tot.	(#)	(#)%	(/)%	(=)%	Eff.	Tot.	(#)	(#)%	(/)%	(=)%	Eff.	Tot.	(#)	(#)%	(/)%	(=)%	Eff.	Tot.	(#)	(#)%	(/)%	(=)%	Eff.
n.\$	Netherlands 2016	0	0	(---)	(---)	(---)	---	0	0	(---)	(---)	(---)	---	0	0	(---)	(---)	(---)	---	4	3	75%	0%	0%	75%	4	1	25%	0%	25%	0%	0	0	---	(---)	(---)	---
n.06	6 DIEFENBACH	0	0	(---)	(---)	(---)	---	0	0	(---)	(---)	(---)	---	0	0	(---)	(---)	(---)	---	2	1	50%	0%	0%	50%	1	0	0%	0%	0%	0%	0	0	---	(---)	(---)	---
n.15	15 KOELEWIJN	0	0	(---)	(---)	(---)	---	0	0	(---)	(---)	(---)	---	0	0	(---)	(---)	(---)	---	2	2	100	0%	0%	100	1	0	0%	0%	100	-100	0	0	---	(---)	(---)	---
n.17	17 PARKINSON	0	0	(---)	(---)	(---)	---	0	0	(---)	(---)	(---)	---	0	0	(---)	(---)	(---)	---	0	0	0	(---)	(---)	---	0	0	(---)	(---)	(---)	---	0	0	---	(---)	(---)	---
n.20	20 PLAK	0	0	(---)	(---)	(---)	---	0	0	(---)	(---)	(---)	---	0	0	(---)	(---)	(---)	---	0	0	0	(---)	(---)	---	2	1	50%	0%	0%	50%	0	0	---	(---)	(---)	---
n.\$	Nome	QUICK da 4						QUICK da 2					QUICK da 1					PIPE/SCHEMI						PALLA ALTA													
		Tot.	(#)	(#)%	(/)%	(=)%	Eff.	Tot.	(#)	(#)%	(/)%	(=)%	Eff.	Tot.	(#)	(#)%	(/)%	(=)%	Eff.	Tot.	(#)	(#)%	(/)%	(=)%	Eff.	Tot.	(#)	(#)%	(/)%	(=)%	Eff.						
n.\$	Netherlands 2016	138	68	49%	9%	5%	35%	94	48	51%	12%	1%	38%	98	47	48%	4%	10%	34%	37	25	68%	3%	16%	49%	163	57	35%	10%	9%	16%						
n.3	3 GARDEREN van	40	15	38%	12%	12%	14%	1	1	100	0%	0%	100	0	0	(---)	(---)	(---)	---	11	8	73%	9%	9%	55%	24	10	42%	12%	4%	26%						
n.4	4 HORST ter	23	12	52%	4%	0%	48%	0	0	(---)	(---)	(---)	---	0	0	(---)	(---)	(---)	---	13	9	69%	0%	8%	61%	22	6	27%	27%	23%	-23%						
n.10	10 RAUWERDINK	13	7	54%	8%	0%	46%	4	1	25%	50%	0%	-25%	0	0	(---)	(---)	(---)	---	5	4	80%	0%	0%	80%	12	4	33%	8%	0%	25%						
n.18	18 ANDRINGA	28	14	50%	4%	7%	39%	4	2	50%	50%	0%	0%	0	0	(---)	(---)	(---)	---	4	2	50%	0%	50%	0%	26	8	31%	12%	12%	7%						
n.12	12 DIJK van	12	9	75%	0%	0%	75%	25	11	44%	12%	0%	32%	34	15	44%	3%	12%	29%	2	1	50%	0%	50%	0%	27	9	33%	4%	7%	22%						
n.16	16 MAAT ter	10	2	20%	40%	0%	-20%	35	22	63%	3%	3%	57%	30	17	57%	7%	7%	43%	0	0	(---)	(---)	(---)	---	25	11	44%	8%	8%	28%						

Total Worksheet - 06 - Utilizzo attaccanti in CP per punteggio

n.15	15 KOELEWIJN	0	---	---	---	---	0	---	---	---	---	0	---	---	---	---	0	---	---	---	---	0	---	---	---	---
n.17	17 PARKINSON	0	---	---	---	---	0	---	---	---	---	0	---	---	---	---	0	---	---	---	---	0	---	---	---	---
n.20	20 PLAK	0	---	---	---	---	0	---	---	---	---	0	---	---	---	---	0	---	---	---	---	0	---	---	---	---

RICEZIONE -

Nome	Att.	Distr.	Diff.	Di (%)	Err.%	Att.	Distr.	Diff.	Di (%)	Err.%	Att.	Distr.	Diff.	Di (%)	Err.%	Att.	Distr.	Diff.	Di (%)	Err.%	Att.	Distr.	Diff.	Di (%)	Err.%	
Netherlands 2016	0	---	---	---	---	0	---	---	---	---	0	---	---	---	---	0	---	---	---	---	---	0	---	---	---	---
n.03 3 GARDEREN van	0	---	---	---	---	0	---	---	---	---	0	---	---	---	---	0	---	---	---	---	---	0	---	---	---	---
n.4 4 HORST ter	0	---	---	---	---	0	---	---	---	---	0	---	---	---	---	0	---	---	---	---	---	0	---	---	---	---
n.10 10 RAUWERDINK	0	---	---	---	---	0	---	---	---	---	0	---	---	---	---	0	---	---	---	---	---	0	---	---	---	---
n.18 18 ANDRINGA	0	---	---	---	---	0	---	---	---	---	0	---	---	---	---	0	---	---	---	---	---	0	---	---	---	---
n.12 12 DIJK van	0	---	---	---	---	0	---	---	---	---	0	---	---	---	---	0	---	---	---	---	---	0	---	---	---	---
n.16 16 MAAT ter	0	---	---	---	---	0	---	---	---	---	0	---	---	---	---	0	---	---	---	---	---	0	---	---	---	---
n.6 6 DIEFENBACH	0	---	---	---	---	0	---	---	---	---	0	---	---	---	---	0	---	---	---	---	---	0	---	---	---	---
n.15 15 KOELEWIJN	0	---	---	---	---	0	---	---	---	---	0	---	---	---	---	0	---	---	---	---	---	0	---	---	---	---
n.17 17 PARKINSON	0	---	---	---	---	0	---	---	---	---	0	---	---	---	---	0	---	---	---	---	---	0	---	---	---	---
n.20 20 PLAK	0	---	---	---	---	0	---	---	---	---	0	---	---	---	---	0	---	---	---	---	---	0	---	---	---	---

Total Worksheet - 08 - Muro per tipo di attacco e base

(5) FIN, FIN, FIN, GER16, GER16

MURO per tipo di attacco							
Tipo di attacco	Att.	Muri	(#)	(+)	(!)	(-)	(=)
Alta	152	79	15%	9%	9%	1%	17%
Pipe/Schema	42	10	5%	2%	7%	0%	10%
Primo tempo	112	49	5%	9%	12%	1%	15%
Quick	285	100	9%	4%	5%	1%	15%
Altro	35	9	0%	6%	17%	3%	0%
Totale	626	299	11%	8%	10%	1%	18%

Base	Tutte le uscite							FRONT							CENTER							BACK												
	Att.	Muri	(#)	(+)	(!)	(-)	(=)	Att.	Muri	(#)	(+)	(!)	(-)	(=)	Att.	Muri	(#)	(+)	(!)	(-)	(=)	Att.	Muri	(#)	(+)	(!)	(-)	(=)						
K1 KH	210	107	8%	10%	12%	1%	20%	65	40	5%	11%	14%	2%	31%	67	31	6%	9%	15%	1%	15%	55	29	16%	9%	7%	2%	18%	17	5	6%	6%	12%	0%
K2 KW	26	9	8%	8%	4%	4%	12%	7	2	0%	0%	0%	14%	14%	8	5	0%	25%	12%	0%	25%	10	2	20%	0%	0%	0%	0%	1	0	0%	0%	0%	
K7 KX	36	16	14%	3%	8%	0%	19%	2	0	0%	0%	0%	0%	0%	15	7	13%	7%	13%	0%	13%	13	7	23%	0%	8%	0%	23%	5	1	0%	0%	0%	0%
Tot.	272	132	9%	8%	11%	1%	19%	74	42	4%	9%	12%	3%	28%	90	43	7%	10%	14%	1%	16%	78	38	18%	6%	6%	1%	17%	23	6	4%	4%	9%	0%

DETTAGLIO MURO su palla QUICK							
	Att.	Muri	(#)	(+)	(!)	(-)	(=)
---- X5	142	78	11%	9%	11%	1%	23%
---- X6	79	50	16%	9%	8%	1%	28%
---- X8	64	19	12%	0%	5%	0%	12%
Totale	285	100	9%	4%	5%	1%	15%

Base	Tutte le uscite							FRONT							CENTER							BACK												
	Att.	Muri	(#)	(+)	(!)	(-)	(=)	Att.	Muri	(#)	(+)	(!)	(-)	(=)	Att.	Muri	(#)	(+)	(!)	(-)	(=)	Att.	Muri	(#)	(+)	(!)	(-)	(=)						
KM	6	4	0%	0%	50%	0%	17%	4	3	0%	0%	50%	0%	25%	0	0	----	----	----	----	----	2	1	0%	0%	50%	0%	0%	0	0	----	----	----	----
KC	0	0	----	----	----	----	----	0	0	----	----	----	----	----	0	0	----	----	----	----	----	0	0	----	----	----	----	----	0	0	----	----	----	----
KA	0	0	----	----	----	----	----	0	0	----	----	----	----	----	0	0	----	----	----	----	----	0	0	----	----	----	----	----	0	0	----	----	----	----
Tot.	6	4	0%	0%	50%	0%	17%	4	3	0%	0%	50%	0%	25%	0	0	----	----	----	----	----	2	1	0%	0%	50%	0%	0%	0	0	----	----	----	----

MURO per qualif della ricezione							
Ricezione	Att.	Muri	(#)	(+)	(!)	(-)	(=)
Rice #	109	48	5%	9%	12%	0%	18%
Rice +	131	60	8%	10%	8%	2%	18%
Rice !	71	40	20%	4%	14%	3%	15%
Rice -	71	39	14%	10%	8%	0%	21%
Totale	382	187	10%	9%	10%	1%	18%

Base	Tutte le uscite							FRONT							CENTER							BACK												
	Att.	Muri	(#)	(+)	(!)	(-)	(=)	Att.	Muri	(#)	(+)	(!)	(-)	(=)	Att.	Muri	(#)	(+)	(!)	(-)	(=)	Att.	Muri	(#)	(+)	(!)	(-)	(=)						
KP	11	5	18%	18%	0%	0%	9%	6	4	17%	33%	0%	0%	17%	2	0	0%	0%	0%	0%	0%	3	1	33%	0%	0%	0%	0%	0	0	----	----	----	----
KS	8	3	0%	12%	0%	0%	25%	1	1	0%	0%	0%	0%	100	3	0	0%	0%	0%	0%	0%	4	2	0%	25%	0%	0%	25%	0	0	----	----	----	----
KQ	0	0	----	----	----	----	----	0	0	----	----	----	----	----	0	0	----	----	----	----	----	0	0	----	----	----	----	----	0	0	----	----	----	----
Tot.	8	3	0%	12%	0%	0%	25%	1	1	0%	0%	0%	100	3	0	0%	0%	0%	0%	0%	4	2	0%	25%	0%	0%	25%	0	0	----	----	----	----	

DETTAGLIO MURO su ricezione -							
Ricezione	Att.	Muri	(#)	(+)	(!)	(-)	(=)
---- Rice - (no alta)	24	16	21%	8%	12%	0%	21%
---- Rice - alta)	47	23	11%	11%	6%	0%	21%
Totale	71	39	14%	10%	8%	0%	21%

Total Print Composition - _P12 - 10 - Distribuzione 1

Total Zone Chart analysis

S4			S3			S2		
6 29%	6 29%		5 16%	11 34%		5 21%	8 33%	
33% 33%	17% 50%		80% 80%	73% 73%		40% 40%	62% 62%	
	4 19%	3 14%		2 6%	10 31%		7 29%	4 17%
	100% 100%	33% 33%		50%	40% 50%		43% 71%	100% 100%
	2 10%			4 12%				
	50% 50%			50% 50%				

S5			S6			S1		
8 24%	10 30%	14 42%	4 12%	16 48%	10 30%	7 35%	8 40%	4 20%
62% 75%	100% 100%	29% 43%	-25%	44% 62%	50% 60%	14% 43%	75% 88%	25% 50%
	1 3%			2 6%	1 3%		1 5%	
	-100			50%	100% 100%			

35 21%	59 36%	28 17%
37% 49%	63% 73%	36% 50%
	17 10%	18 11%
	35% 65%	56% 61%
	6 4%	
	50% 50%	

Total events Total events %
Efficiency % Events # in %

DISTRIBUZIONE RICEZIONE #,+

Total Zone Chart analysis

S4			S3			S2		
2 18%	3 27%		2 12%	8 50%		2 15%	3 23%	
50% 50%	100% 100%		100% 100%	88% 88%		50% 50%	67% 67%	
	2 18%	2 18%		1 6%	3 19%		6 46%	2 15%
	100% 100%	50% 50%		-100	67% 67%		33% 67%	100% 100%
	2 18%			2 12%				
	50% 50%			50% 50%				

S5			S6			S1		
2 17%	5 42%	4 33%		8 62%	4 31%	2 40%	3 60%	
50%	100% 100%	100% 100%		38% 50%	100% 100%	50%	33% 67%	
	1 8%			1 8%				
	-100			-100				

10 14%	30 43%	8 11%
40% 60%	70% 77%	100% 100%
	11 16%	7 10%
	9% 55%	71% 71%
	4 6%	
	50% 50%	

Total events Total events %
Efficiency % Events # in %

DISTRIBUZIONE RICEZIONE #

Total Zone Chart analysis

S4			S3			S2		
4 40%	3 30%		3 19%	3 19%		3 27%	5 45%	
25% 25%	-67%		67% 67%	33% 33%		33% 33%	60% 60%	
	2 20%	1 10%		1 6%	7 44%		1 9%	2 18%
	100% 100%			100% 100%	29% 43%		100% 100%	100% 100%
				2 12%				
				50% 50%				

S5			S6			S1		
6 29%	5 24%	10 48%	4 20%	8 40%	6 30%	5 33%	5 33%	4 27%
83% 83%	100% 100%	20%	-25%	50% 75%	17% 33%	20% 40%	100% 100%	25% 50%
				1 5%	1 5%		1 7%	
				100% 100%	100% 100%			

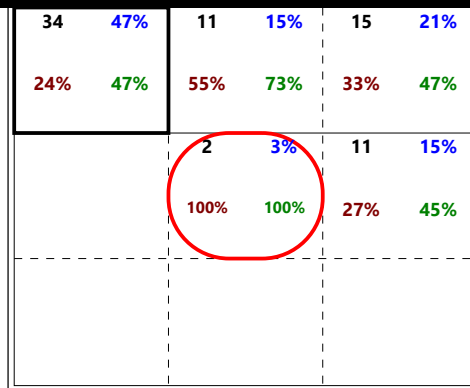
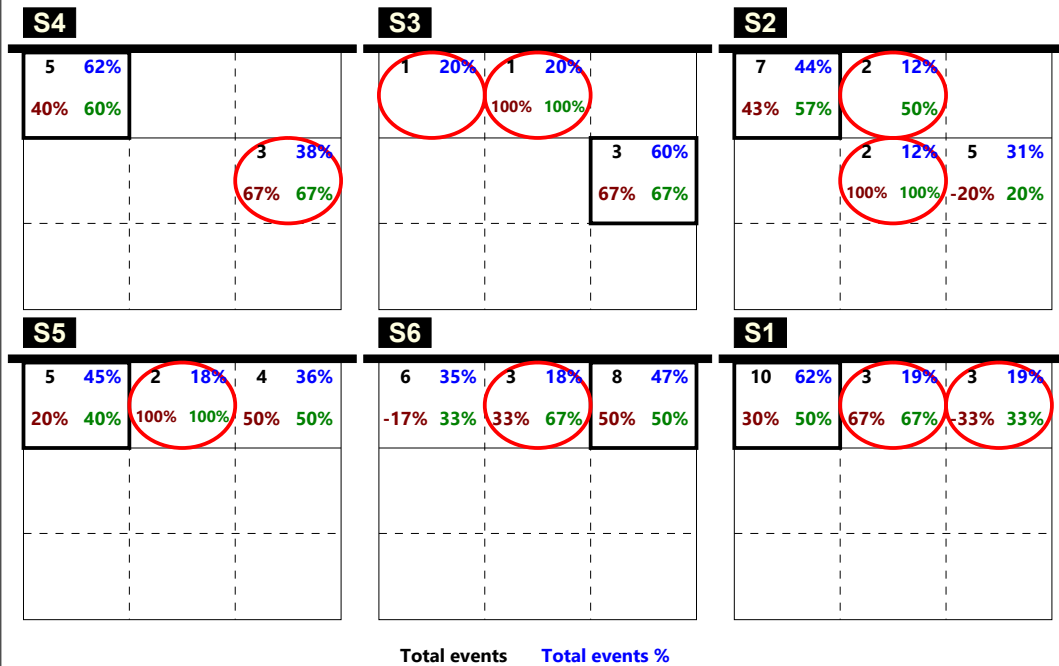
25 27%	29 31%	20 22%
36% 44%	55% 69%	10% 30%
	6 6%	11 12%
	83% 83%	45% 55%
	2 2%	
	50% 50%	

Total events Total events %
Efficiency % Events # in %

DISTRIBUZIONE R +

Total Print Composition - _P12 - 11 - Distribuzione 2

Total Zone Chart analysis

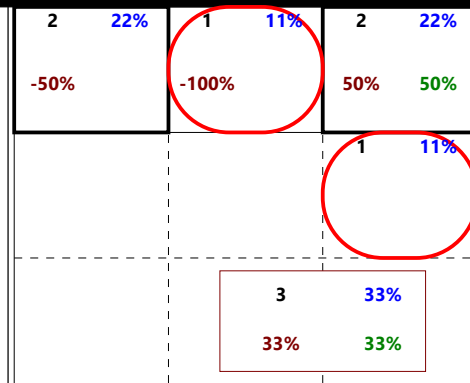
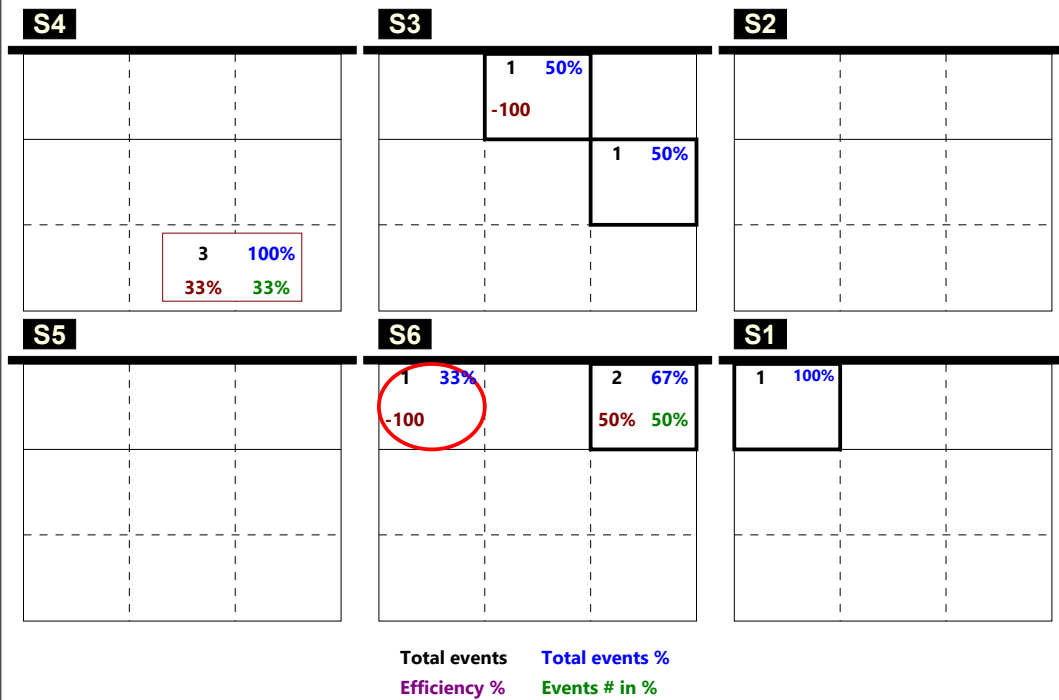


Total events Total events %
Efficiency % Events # in %

DISTRIBUZIONE RICEZIONE !

Total events Total events %
Efficiency % Events # in %

Total Zone Chart analysis



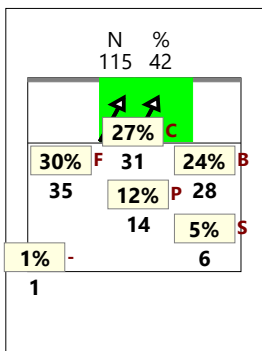
Total events Total events %
Efficiency % Events # in %

DISTRIBUZIONE RICEZIONE -

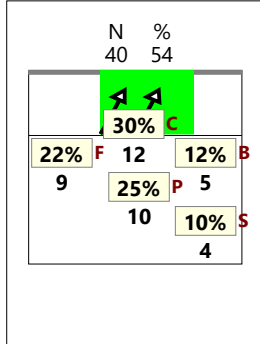
Total events Total events %
Efficiency % Events # in %

CHIAMATA 1 totale (K1 + KH)

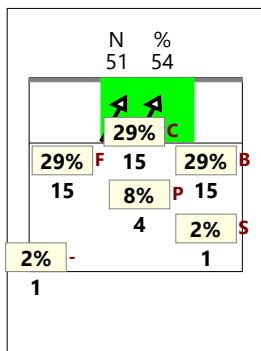
TOTALE



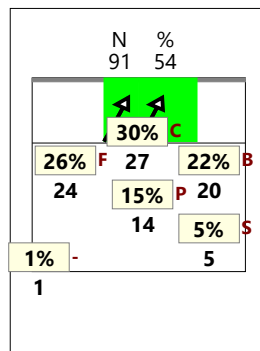
RICEZIONE



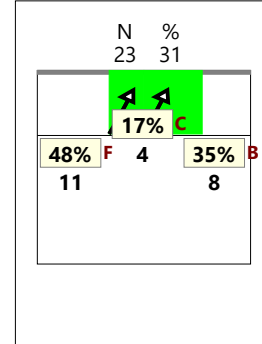
RICEZIONE +



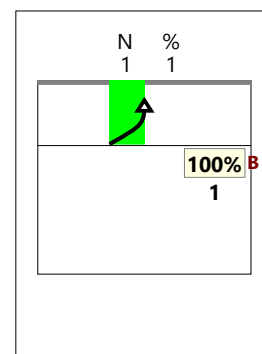
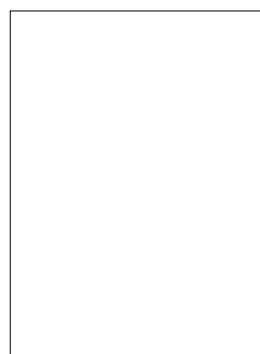
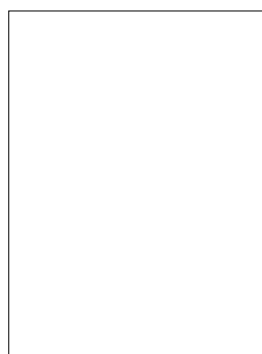
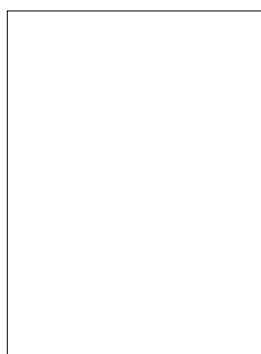
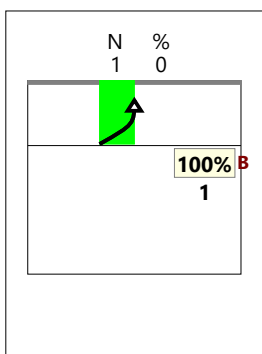
RICEZIONE # +



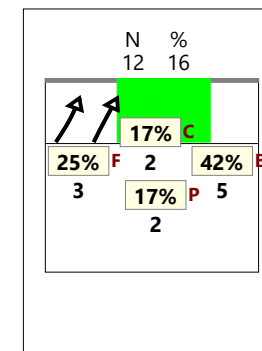
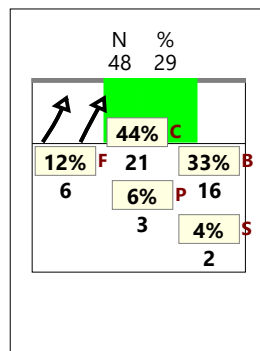
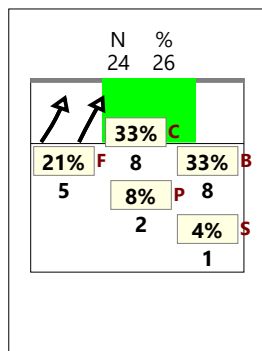
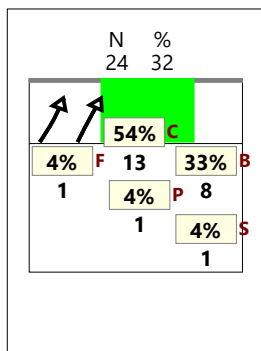
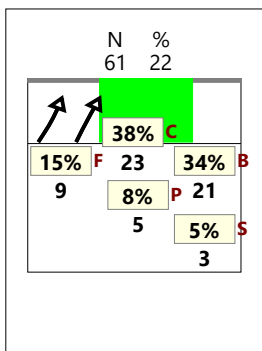
RICEZIONE !



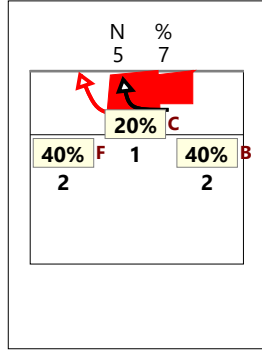
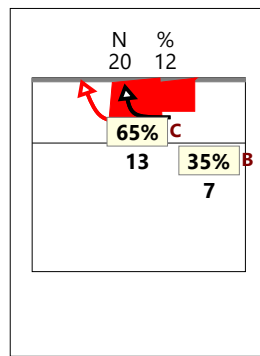
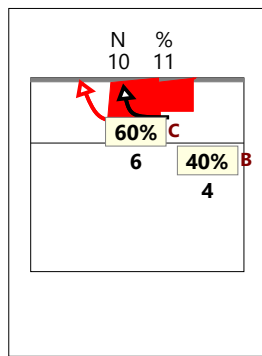
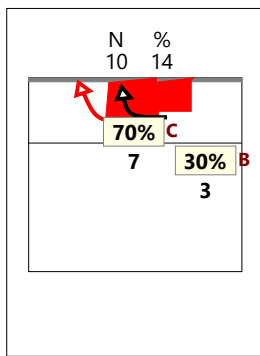
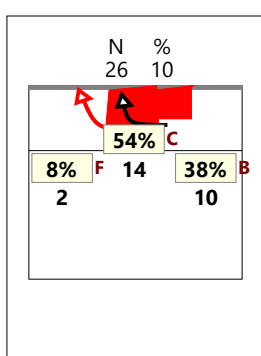
CHIAMATA 2 totale (K2 + KW)



CHIAMATA 7 totale (K7 + KX)

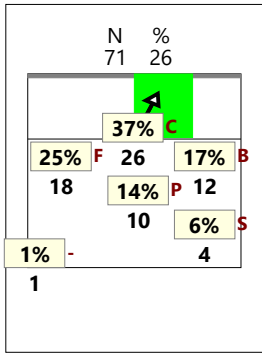


CHIAMATA CC totale (KD + KJ)

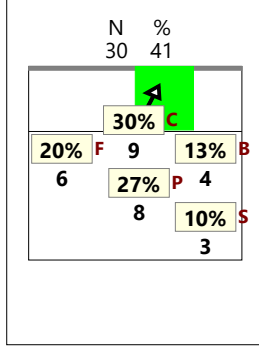


CHIAMATA 1 classica (K1)

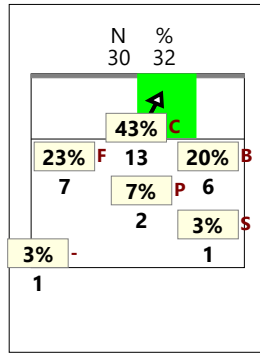
TOTALE



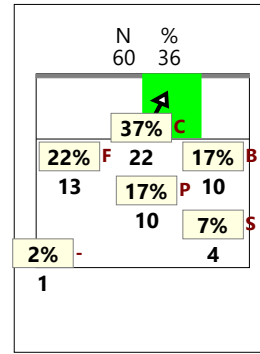
RICEZIONE



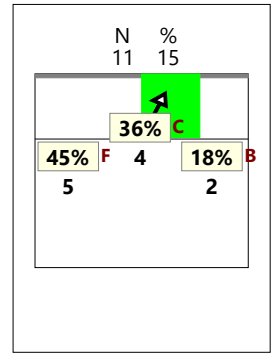
RICEZIONE +



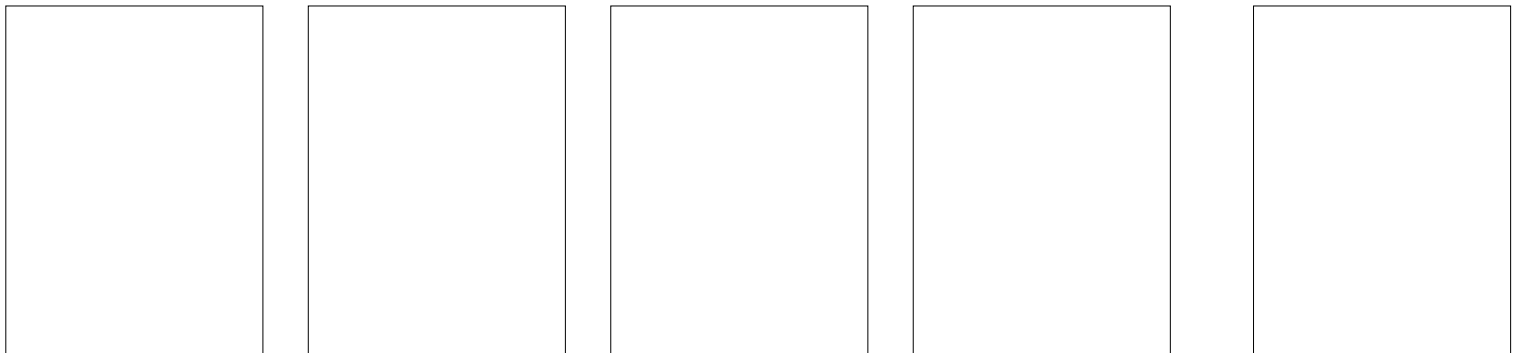
RICEZIONE # +



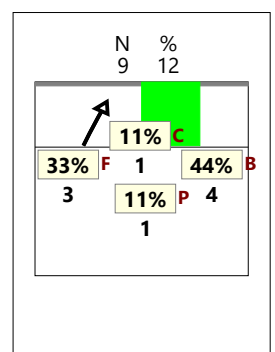
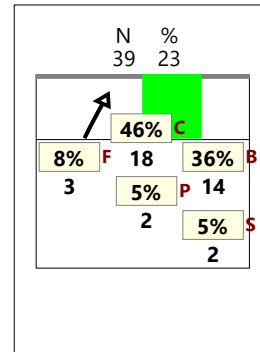
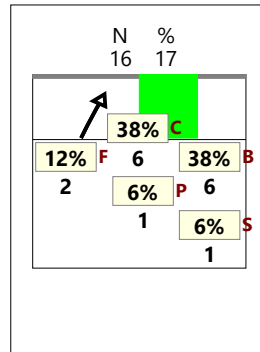
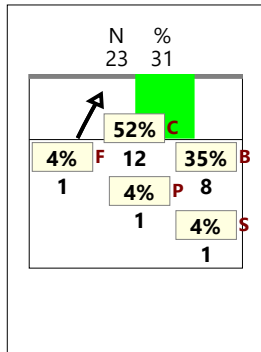
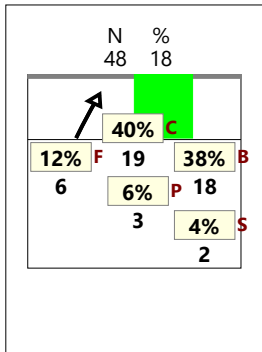
RICEZIONE !



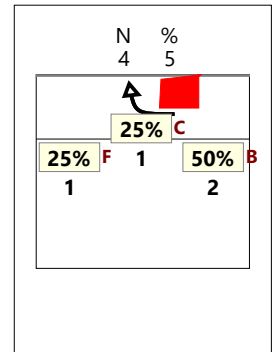
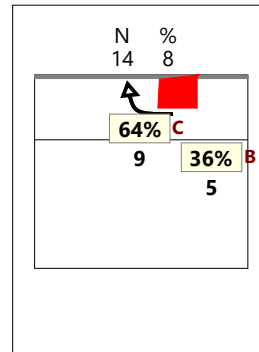
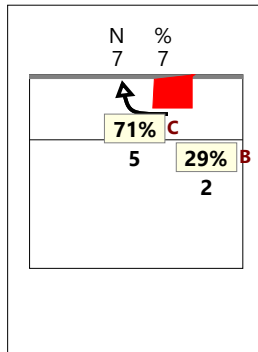
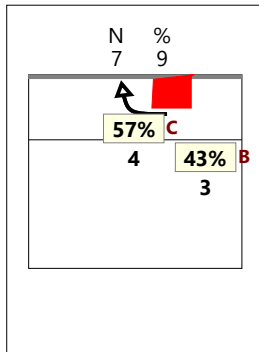
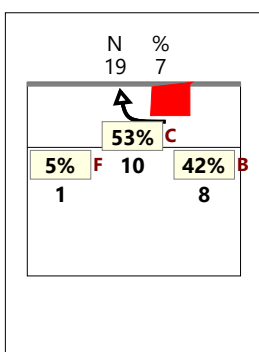
CHIAMATA 2 classica (K2)



CHIAMATA 7 classica (K7)

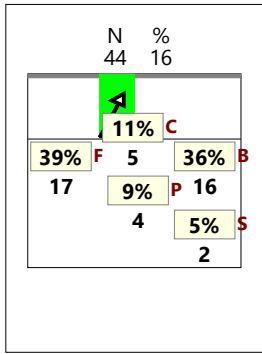


CHIAMATA CC classica (KD)

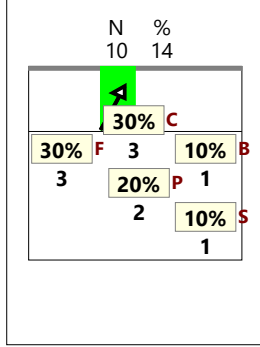


CHIAMATA 1 Centro rete (KH)

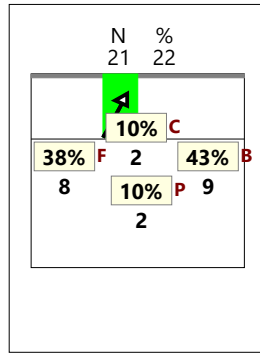
TOTALE



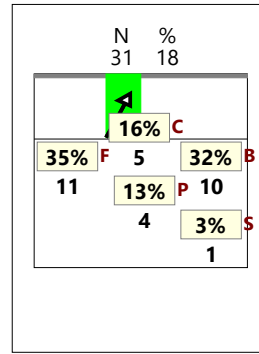
RICEZIONE



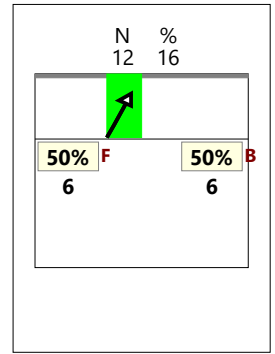
RICEZIONE +



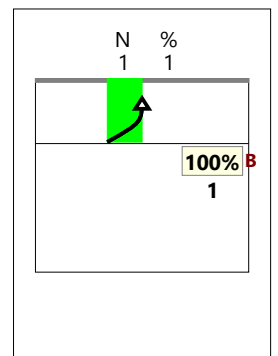
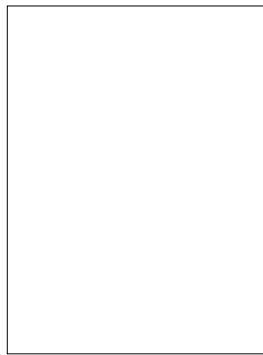
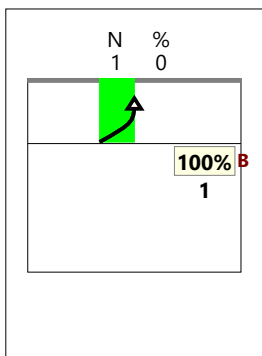
RICEZIONE # +



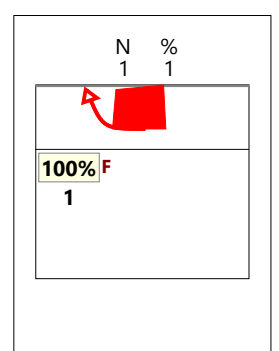
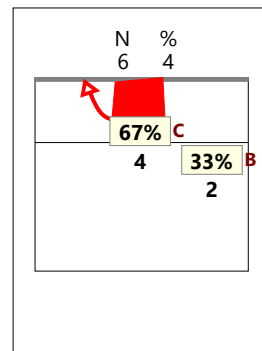
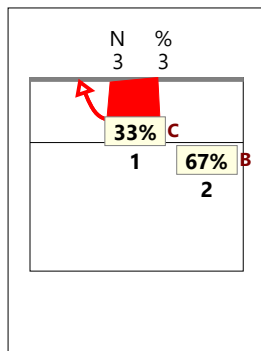
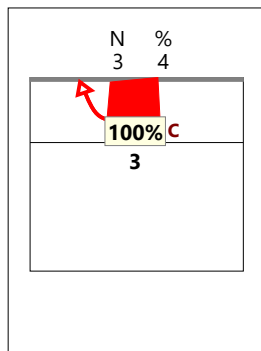
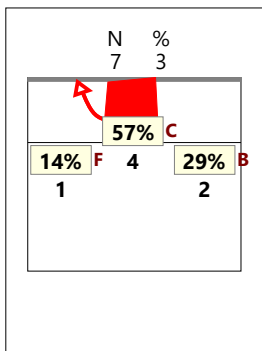
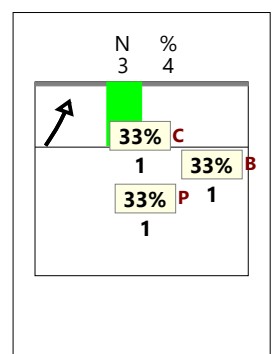
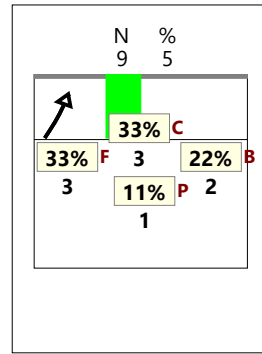
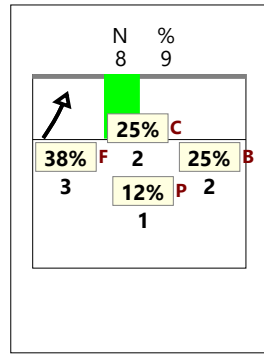
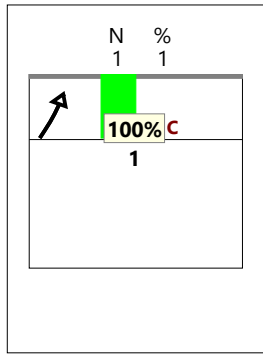
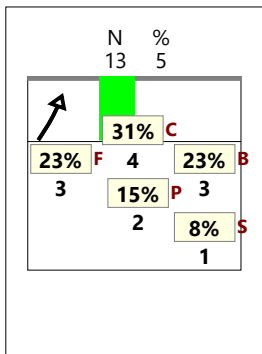
RICEZIONE !



CHIAMATA 2 Centro rete (KW)



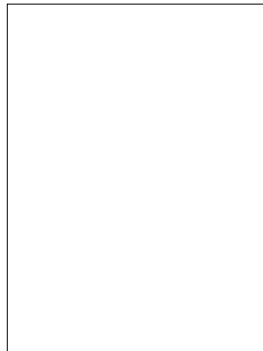
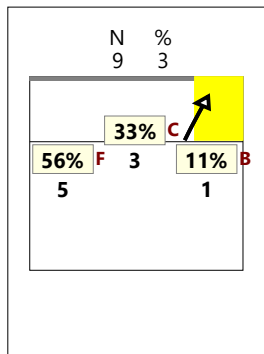
CHIAMATA 7 Centro rete (KX)



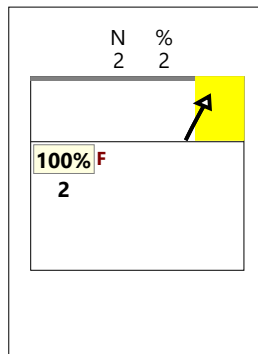
TOTALE

VERSO Z2

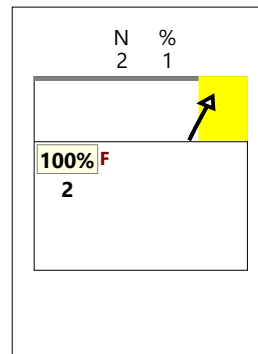
centrale vicino (KM) RICEZIONE



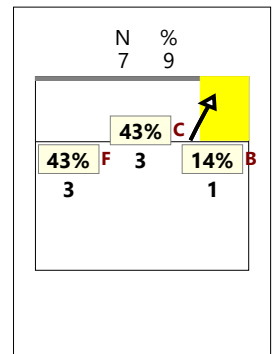
RICEZIONE +



RICEZIONE #,+

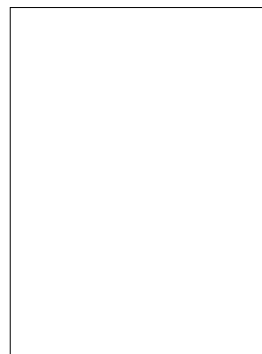
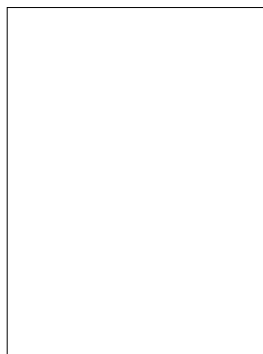
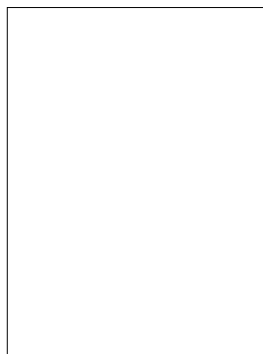
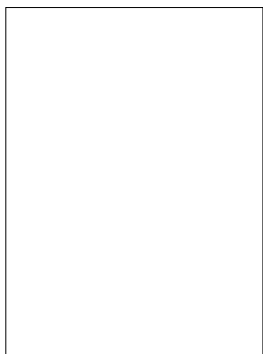


RICEZIONE !



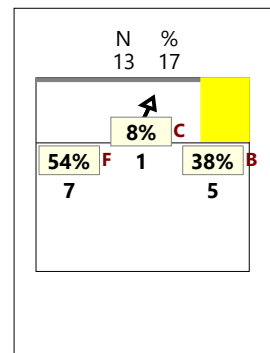
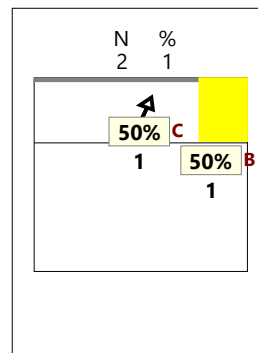
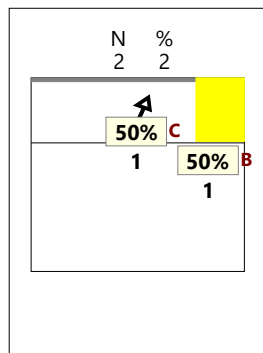
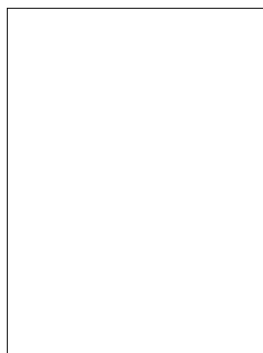
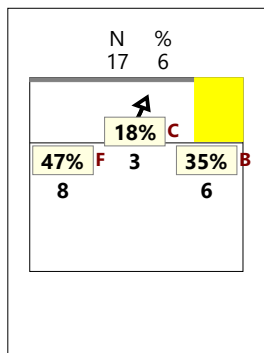
VERSO Z2

centrale dietro (KA)



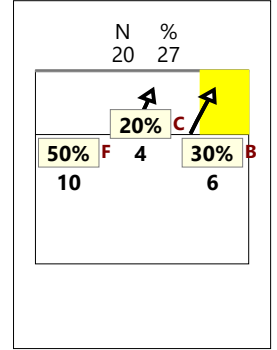
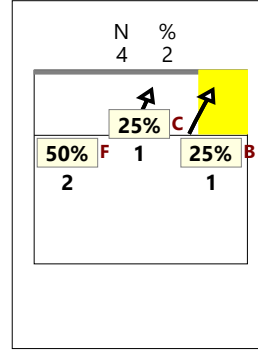
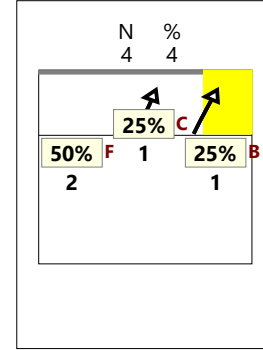
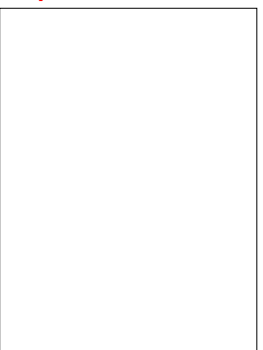
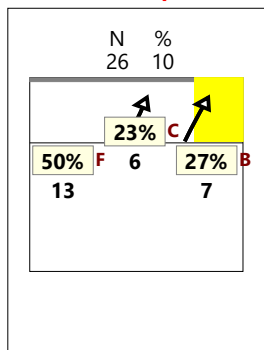
VERSO Z2

centrale lontano (KC)



VERSO Z2

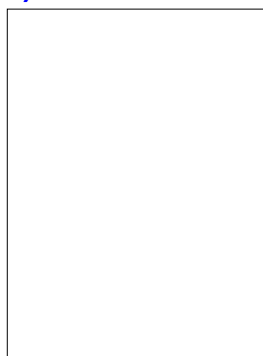
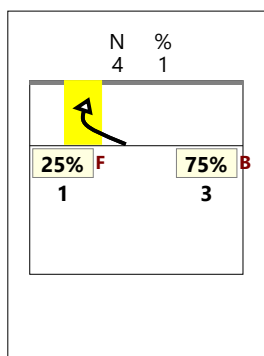
TOTALE (KM KA KC)



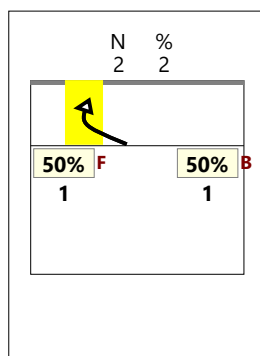
TOTALE

VERSO Z4

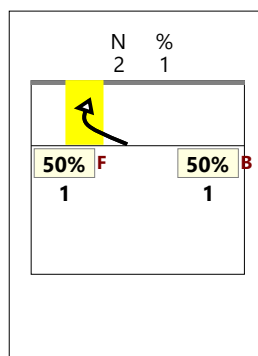
centrale avanti (KP) RICEZIONE



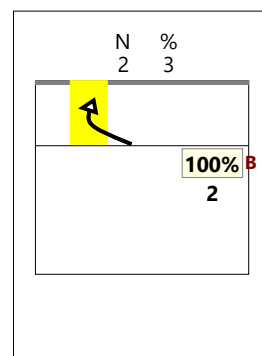
RICEZIONE +



RICEZIONE #,+

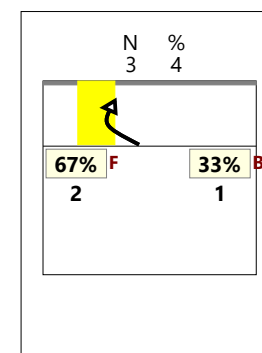
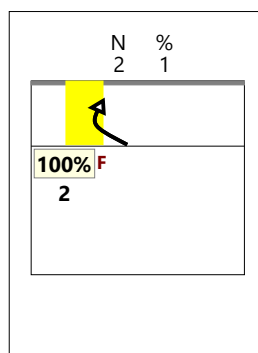
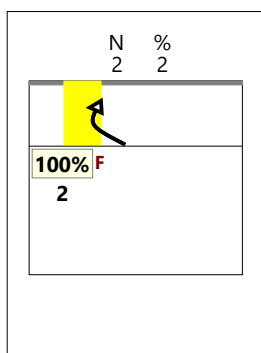
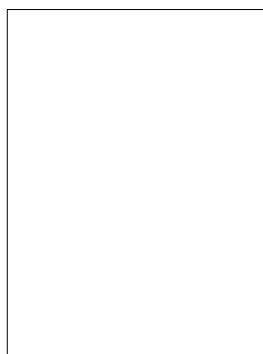
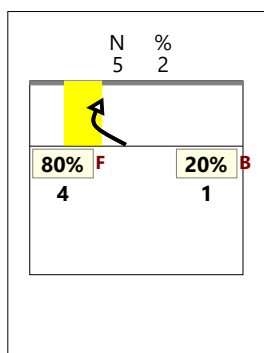


RICEZIONE !



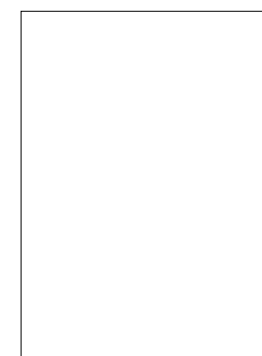
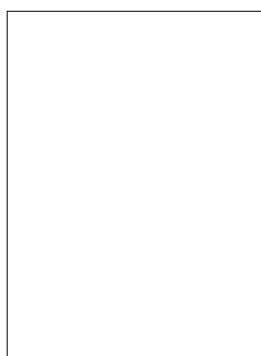
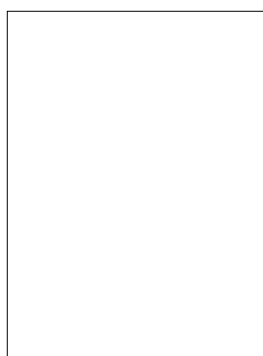
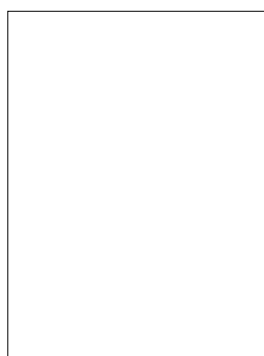
VERSO Z4

centrale dietro (KQ)



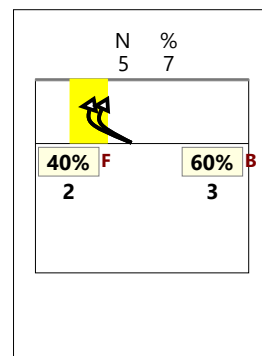
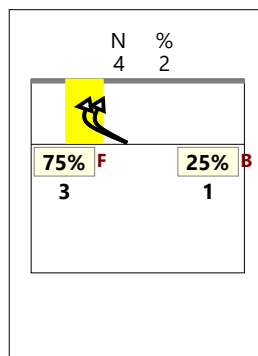
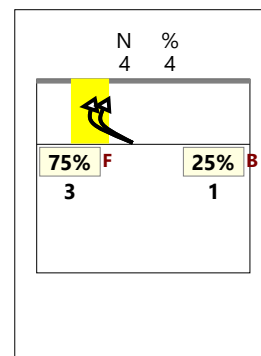
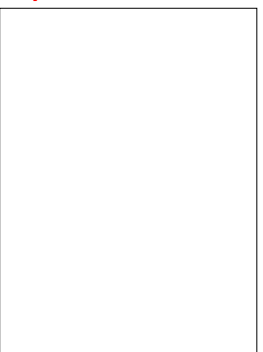
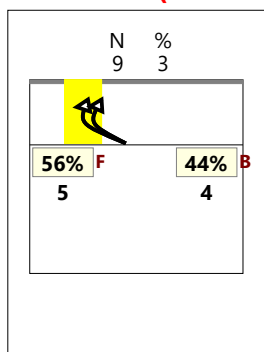
VERSO Z4

centrale lontano (KS)



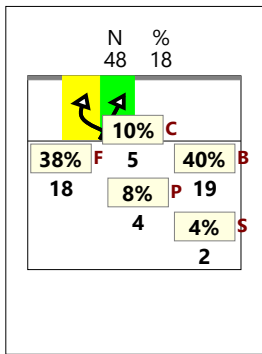
VERSO Z4

TOTALE (KP KQ KS)

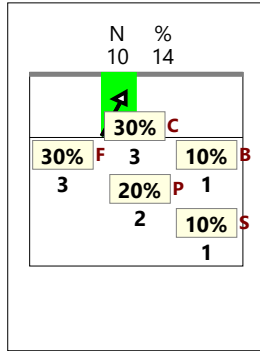


CHIAMATA 1 centro rete e verso 4 (KH + KP)

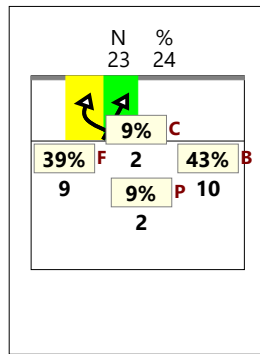
TOTALE



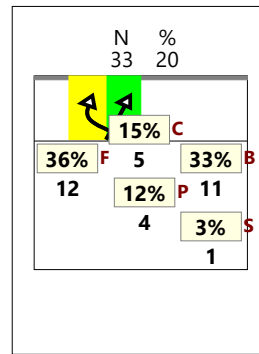
RICEZIONE



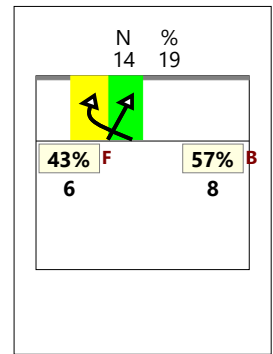
RICEZIONE +



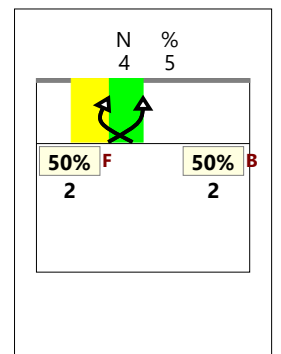
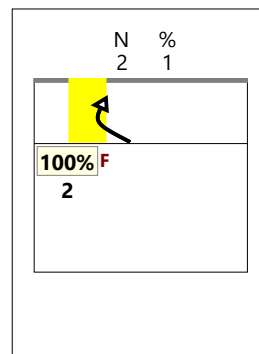
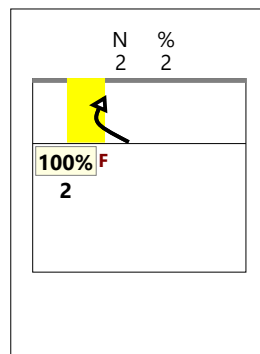
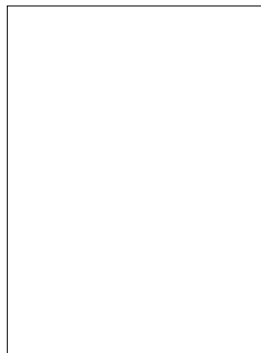
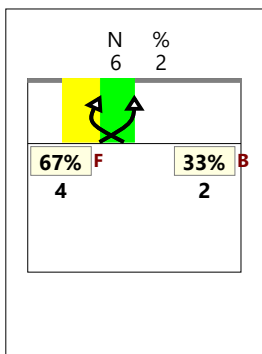
RICEZIONE # +



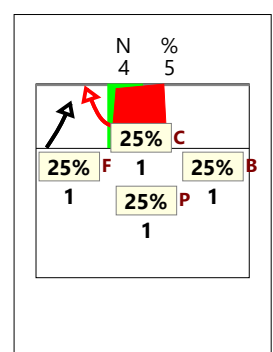
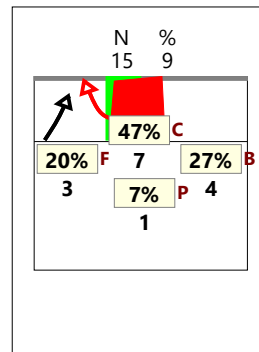
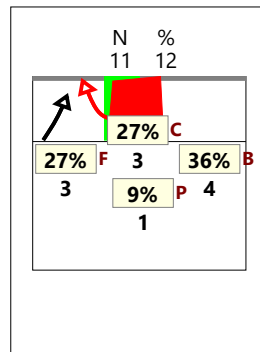
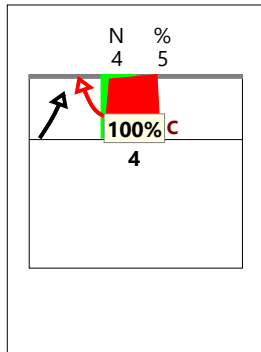
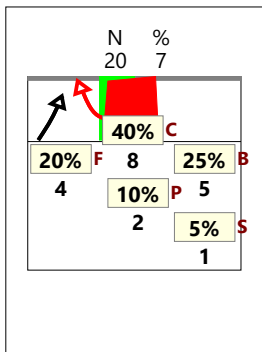
RICEZIONE !



CHIAMATA 2 centro rete e verso 4 (KW + KQ)

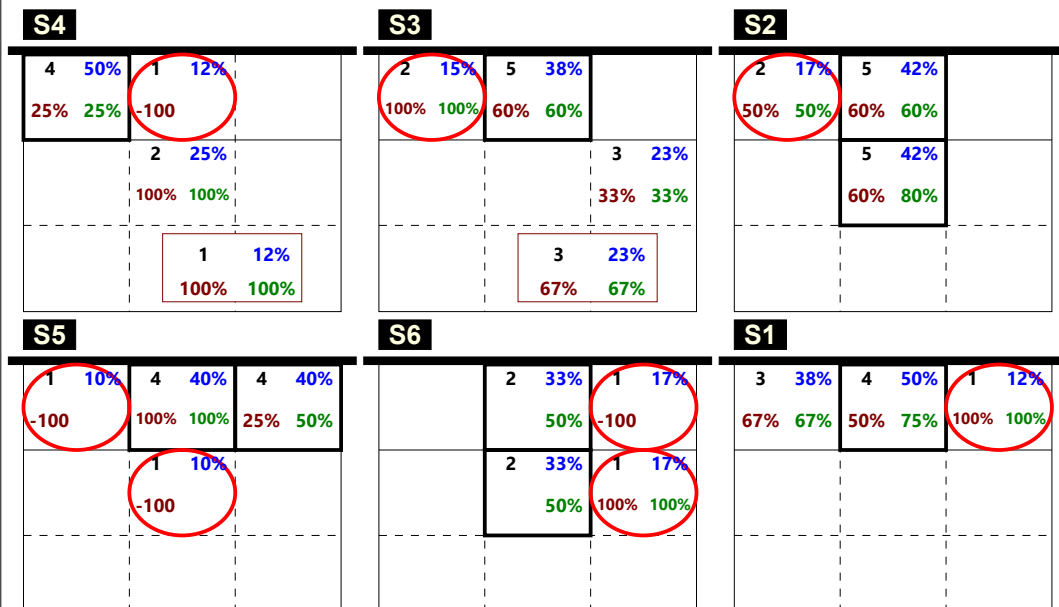


CHIAMATA 7 centro rete e verso 4 (KX + KS + KJ)



Total Print Composition - 19 - Distribuzione chiamata 1, 7 e 2 classica su #+ per rotazione

Total Zone Chart analysis

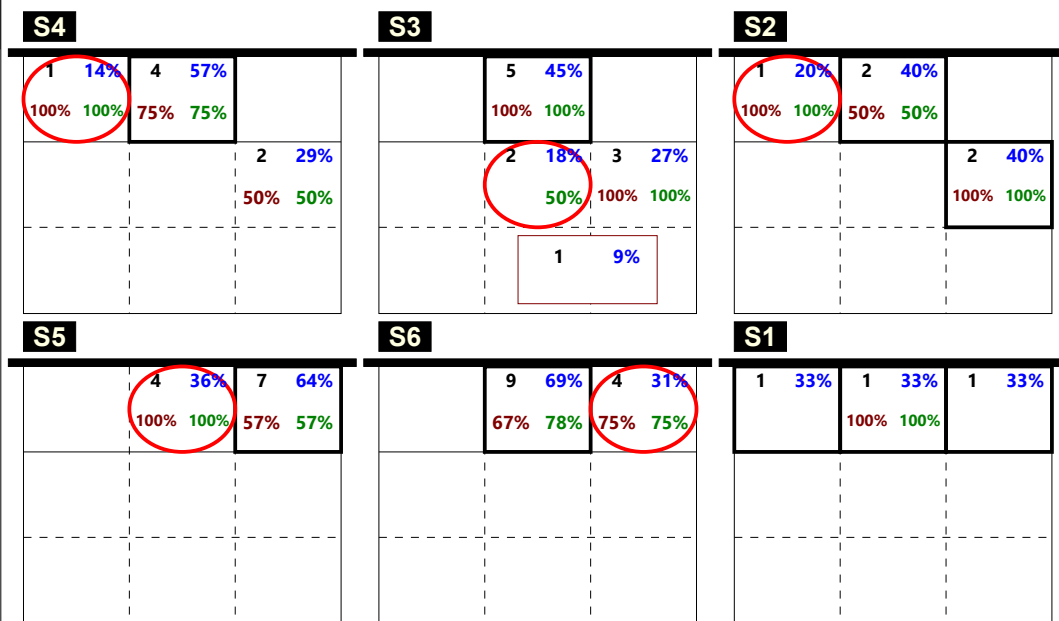


12	21%	21	37%	6	11%
42%	50%	52%	67%	17%	50%
10	18%	4	7%	4	7%
40%	70%	50%	50%	4	7%
75%	75%				

Total events Efficiency % Total events % Events # in %

Ricezione Buona chiamata 1 classica (K1)

Total Zone Chart analysis

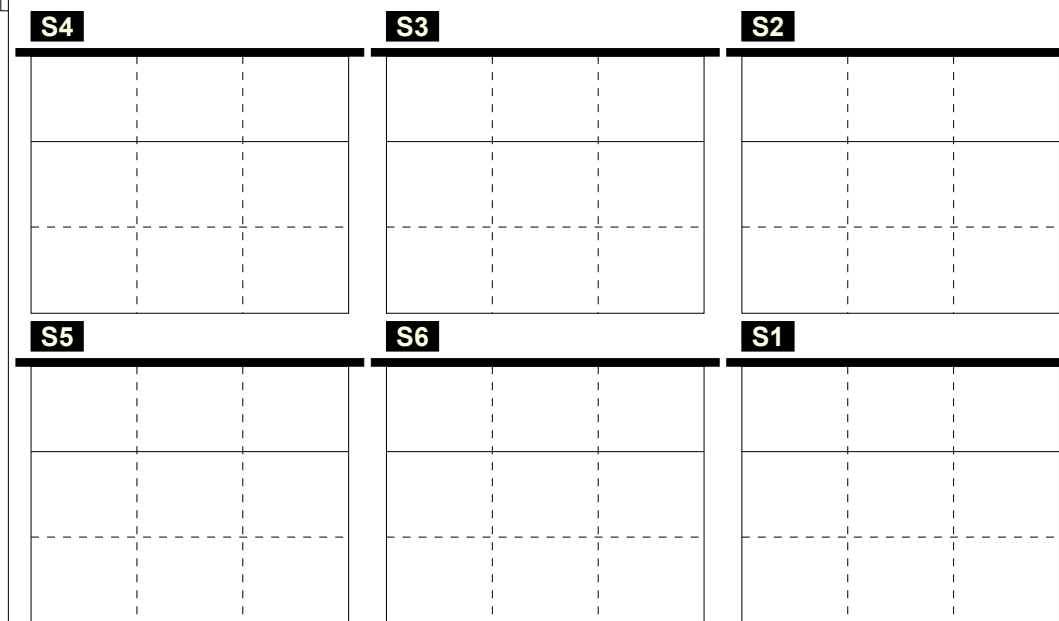


3	6%	25	50%	12	24%
67%	67%	80%	84%	58%	58%
2	4%	7	14%	2	4%
50%	86%	86%		1	2%

Total events Efficiency % Total events % Events # in %

Ricezione Buona chiamata 7 classica K7 + KD

Total Zone Chart analysis



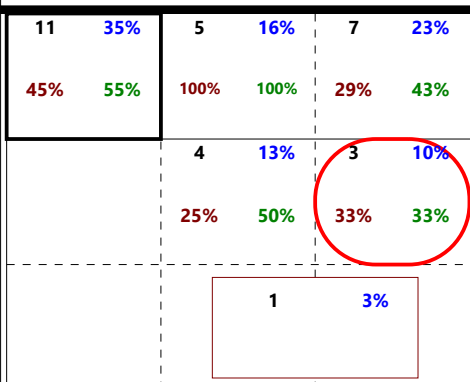
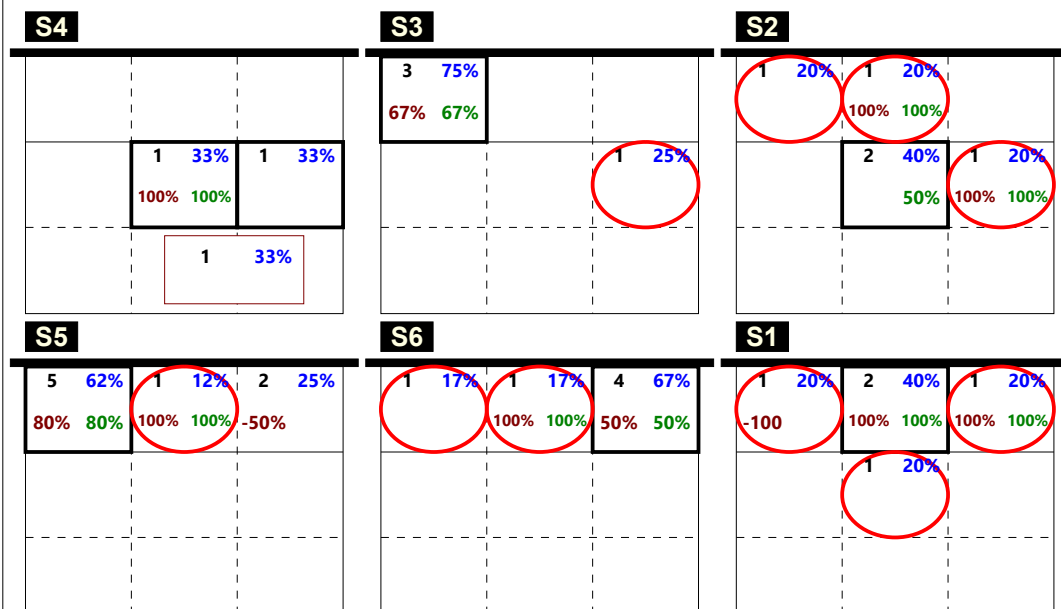
Total events Efficiency % Total events % Events # in %

Ricezione Buona chiamata 2 classica (K2)

Total events Efficiency % Total events % Events # in %

Total Print Composition - 20 - Distribuzione chiamata 1, 7 e 2 centro rete su #+ per rotazione

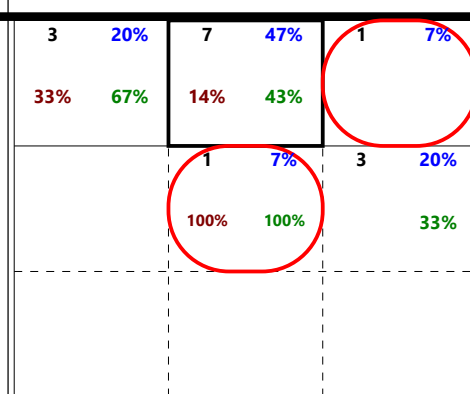
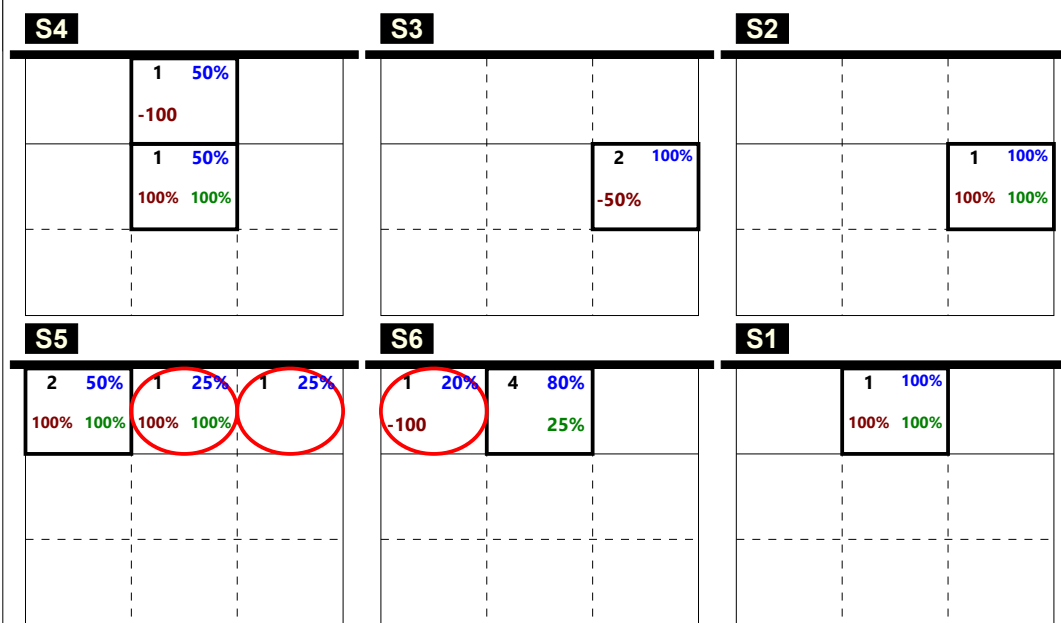
Total Zone Chart analysis



Total events Efficiency % Total events % Events # in %

Ricezione Buona chiamata 1 centro rete (KH)

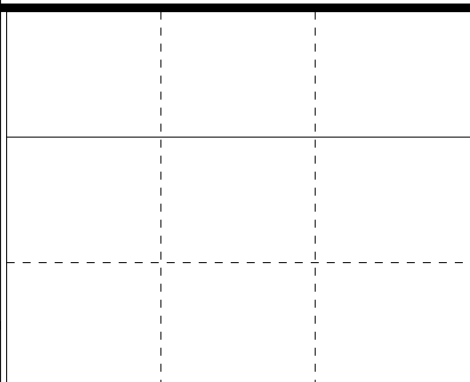
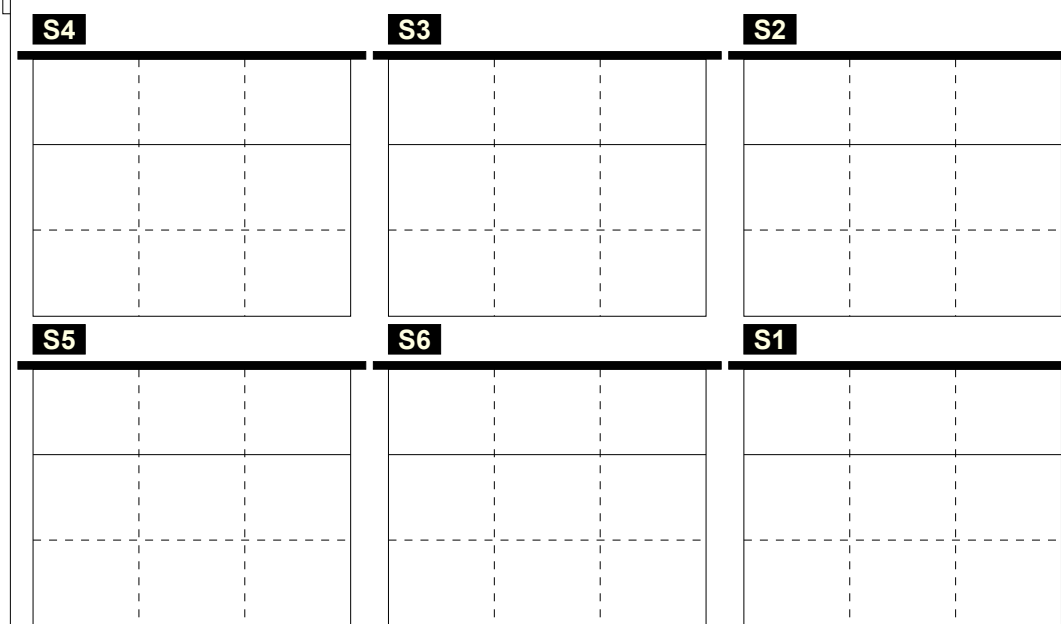
Total Zone Chart analysis



Total events Efficiency % Total events % Events # in %

Ricezione Buona chiamata 7 centro rete KX + KJ

Total Zone Chart analysis



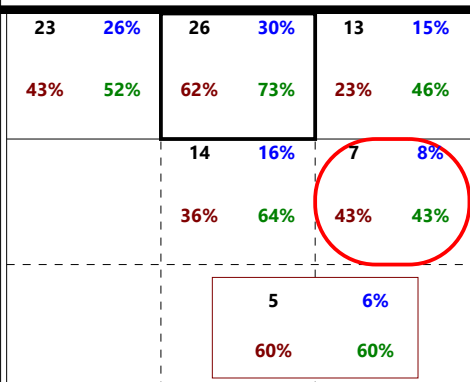
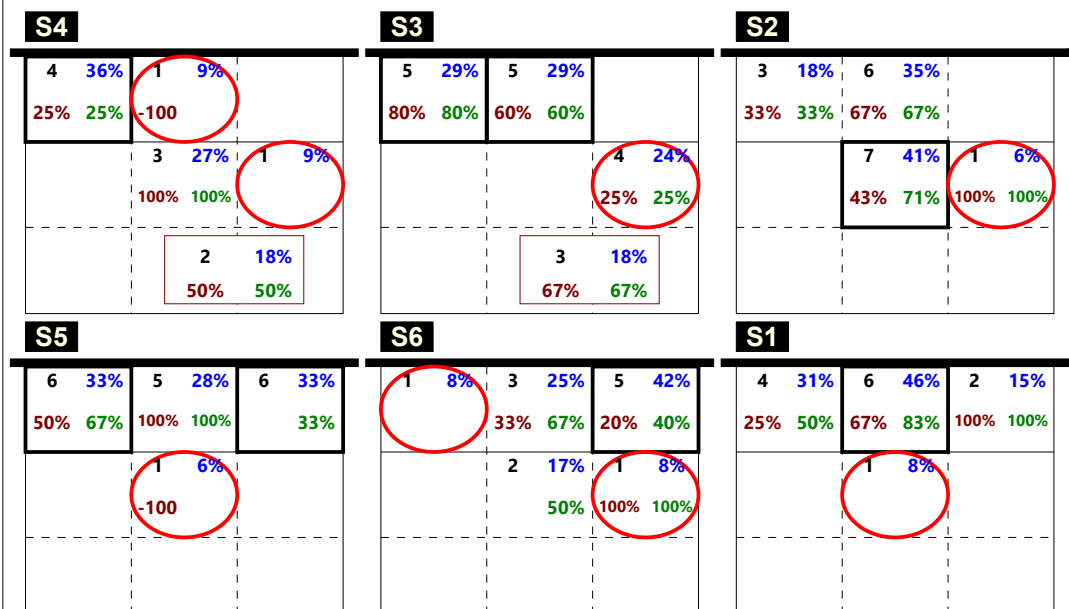
Total events Efficiency % Total events % Events # in %

Ricezione Buona chiamata 2 centro rete (KW)

Total events Efficiency % Total events % Events # in %

Total Print Composition - 21 - Distribuzione totale chiamata 1, 2 e 7 (classica + centro rete) su #+ per rotazione

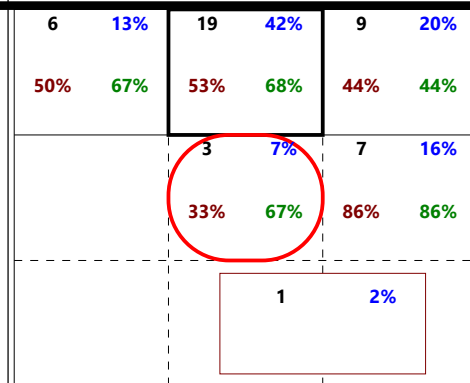
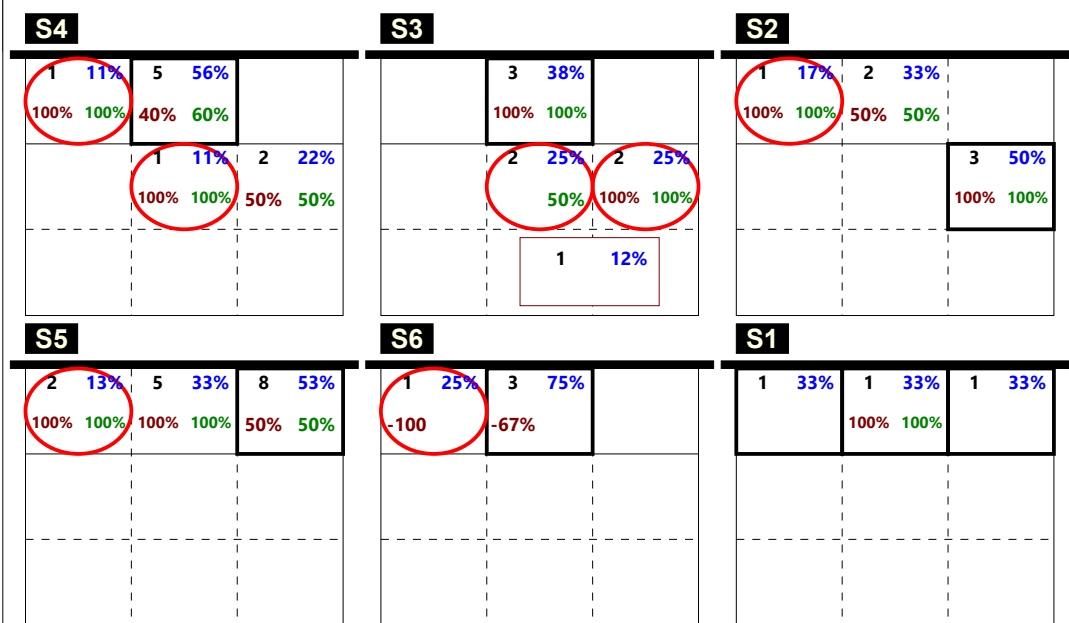
Total Zone Chart analysis



Total events Total events %
Efficiency % Events # in %

Ricezione Buona chiamata 1 totale (K1 + KH)

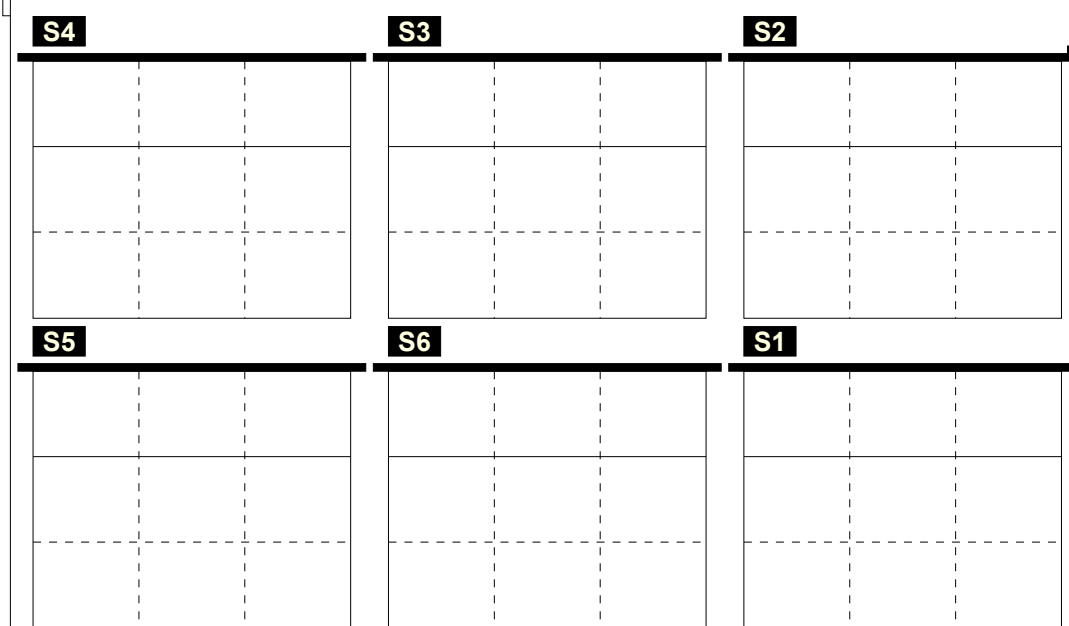
Total Zone Chart analysis



Total events Total events %
Efficiency % Events # in %

Ricezione Buona chiamata 7 totale (K7 + KX)
no KD + KJ

Total Zone Chart analysis



Total events Total events %
Efficiency % Events # in %

Ricezione Buona chiamata 2 totale (K2 + KW)

Total Print Composition - 22 - Distribuzione verso 2 su #+ per rotazione

Total Zone Chart analysis

S4	S3	S2
		1 100%
S5	S6	S1
		1 100% 100% 100%

2 100%		
50% 50%		
Total events Total events % Efficiency % Events # in %		
Ricezione Buona verso 2 centrale vicino (KM)		

Total Zone Chart analysis

S4	S3	S2
	1 50%	
S5	S6	S1
	1 50% 100% 100%	

	1 50%	
		1 50% 100% 100%
Total events Total events % Efficiency % Events # in %		
Ricezione Buona verso 2 centrale lontano (KC)		

Total Zone Chart analysis

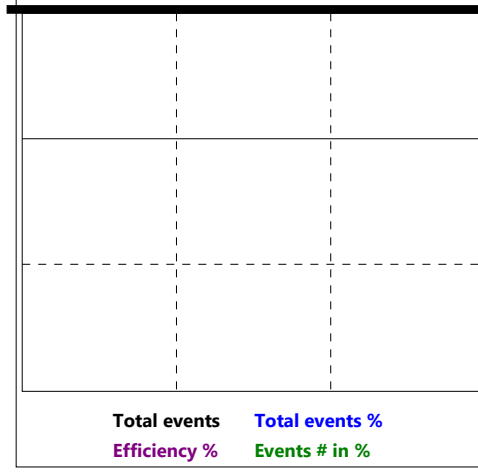
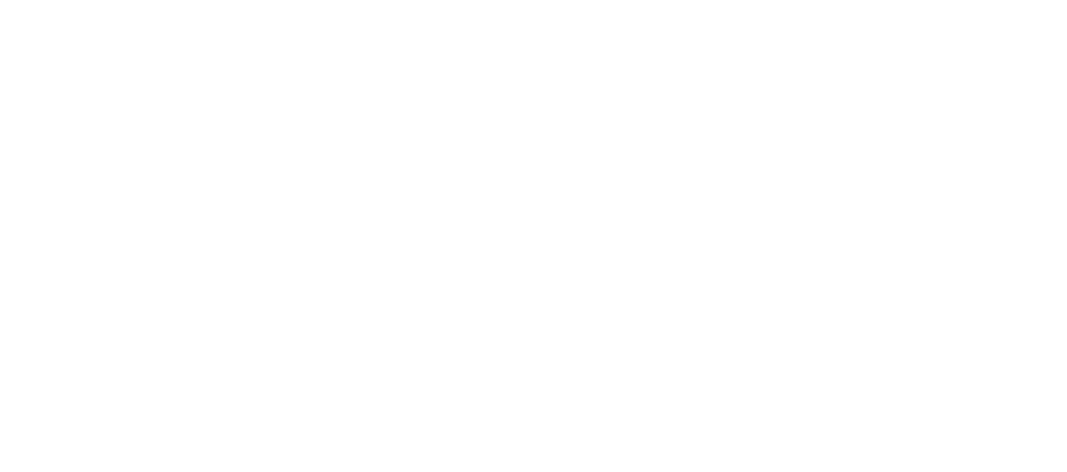
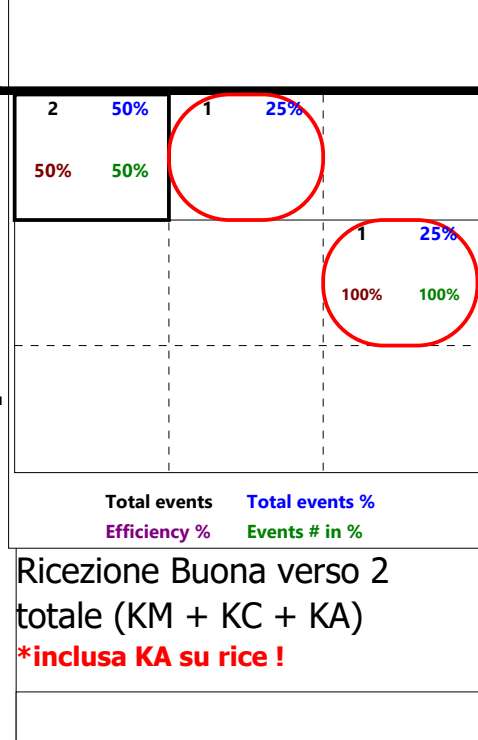
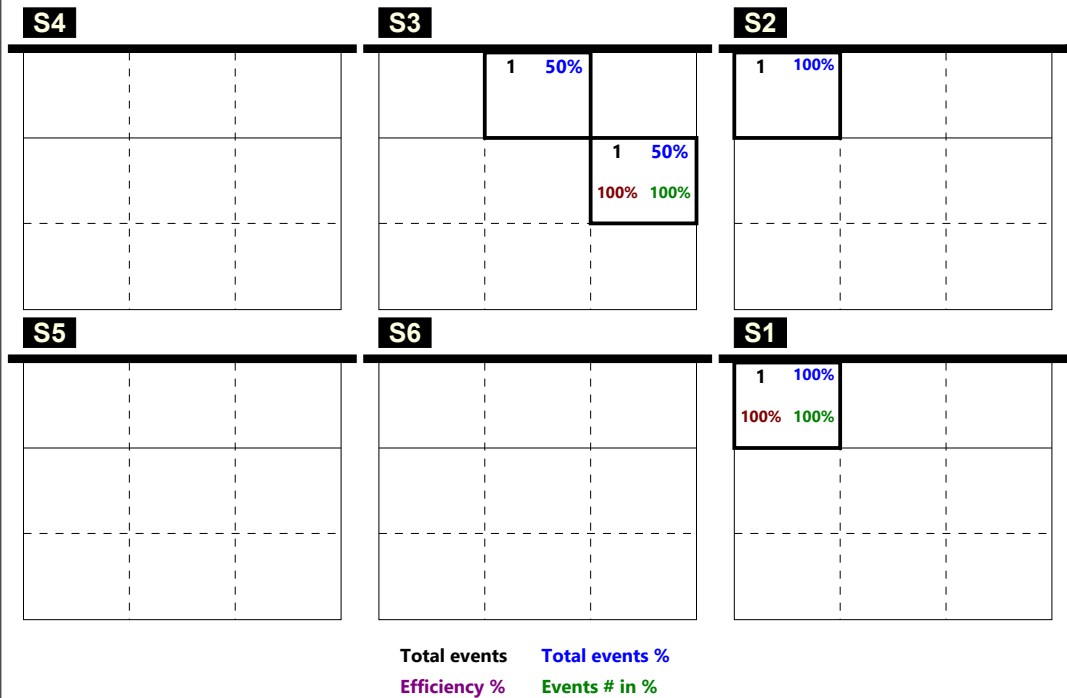
S4	S3	S2
S5	S6	S1

Total events Total events % Efficiency % Events # in %		
Ricezione Buona verso 2 centrale dietro (KA)		

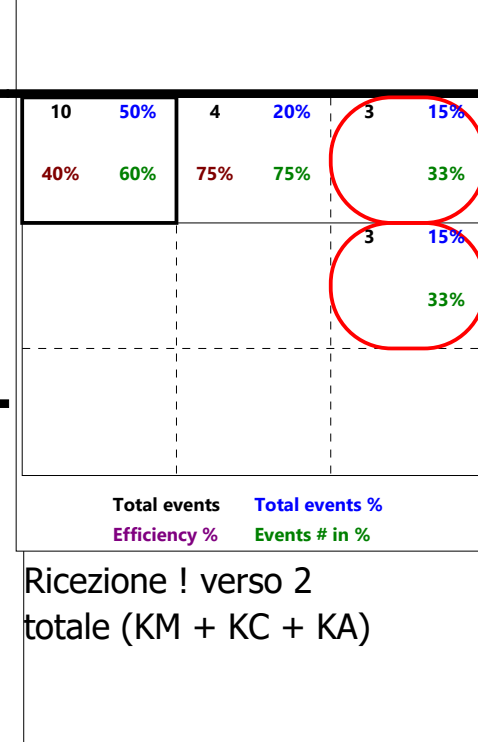
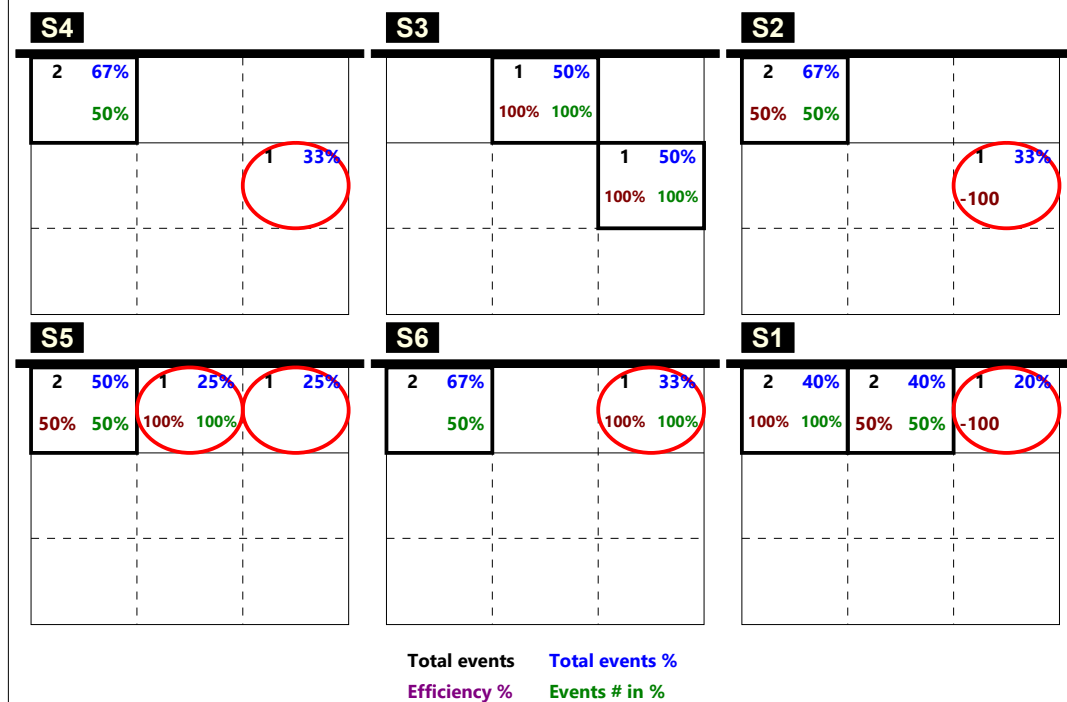
Total events Total events %
 Efficiency % Events # in %

Total Print Composition - 23 - Distribuzione verso 2 su ! per rotazione

Total Zone Chart analysis



Total Zone Chart analysis



Total Print Composition - 24 - Distribuzione verso 4 su #+ per rotazione

Total Zone Chart analysis

S4			S3			S2		
1	100%							
S5			S6			S1		
						1	100%	
								-100

1	50%		1	50%
				-100%

Total events Total events %
 Efficiency % Events # in %

Ricezione Buona verso 4 centrale vicino (KP)

Total Zone Chart analysis

S4			S3			S2		
S5			S6			S1		

Total events Total events %
 Efficiency % Events # in %

Ricezione Buona verso 4 centrale lontano (KS)

Total Zone Chart analysis

S4			S3			S2		
S5			S6			S1		
			1	100%		1	100%	
								-100

2	100%			
				-50%

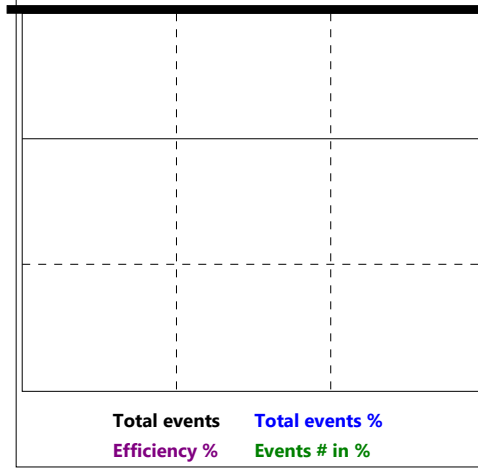
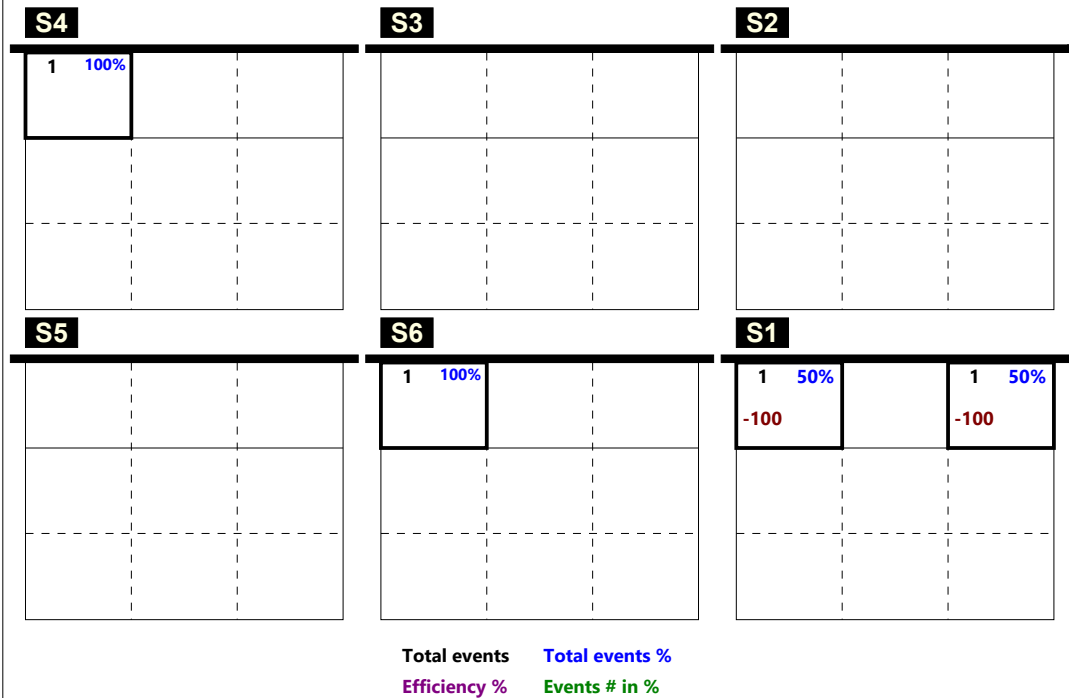
Total events Total events %
 Efficiency % Events # in %

Ricezione Buona verso 4 centrale dietro (KQ)

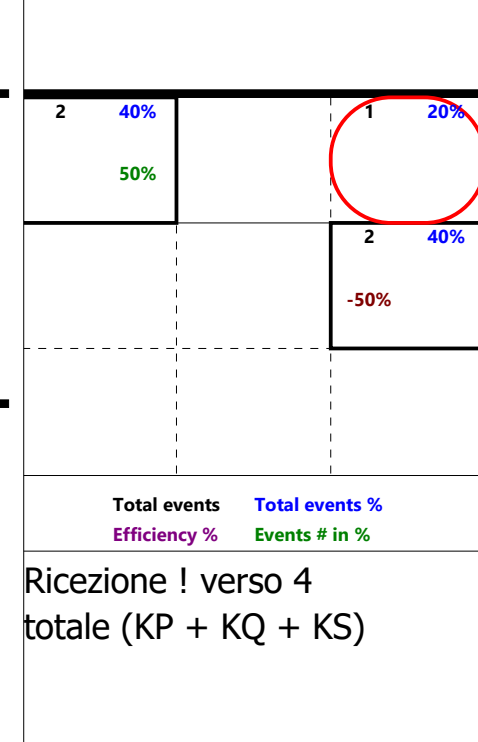
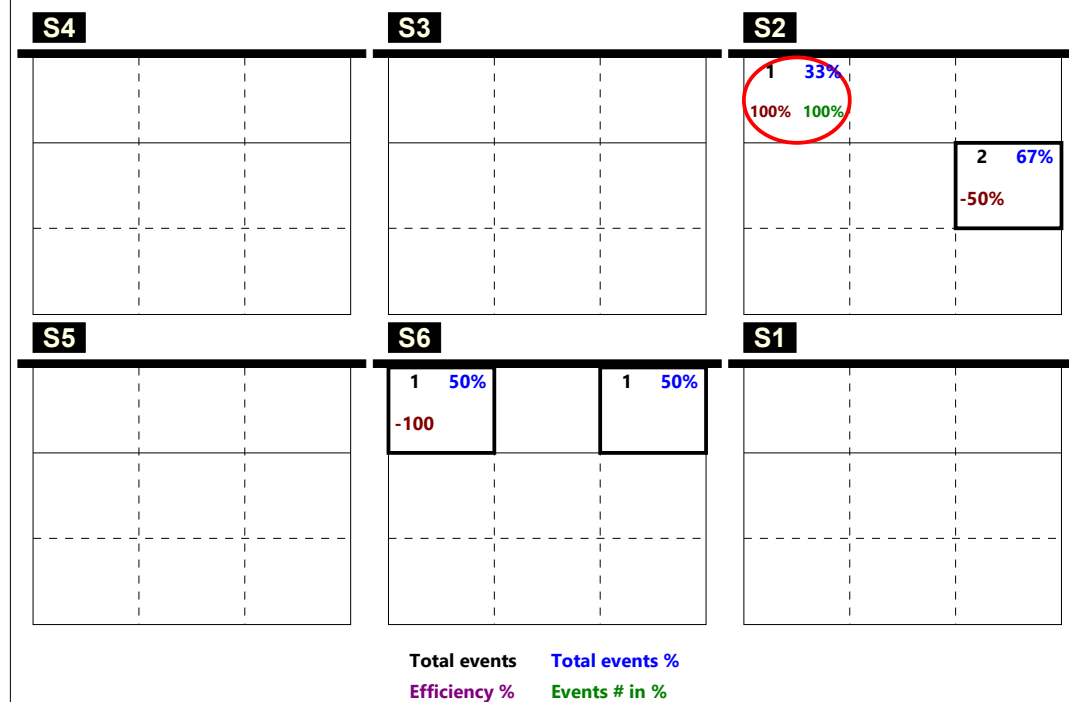
Total events Total events %
 Efficiency % Events # in %

Total Print Composition - 25 - Distribuzione verso 4 su ! per rotazione

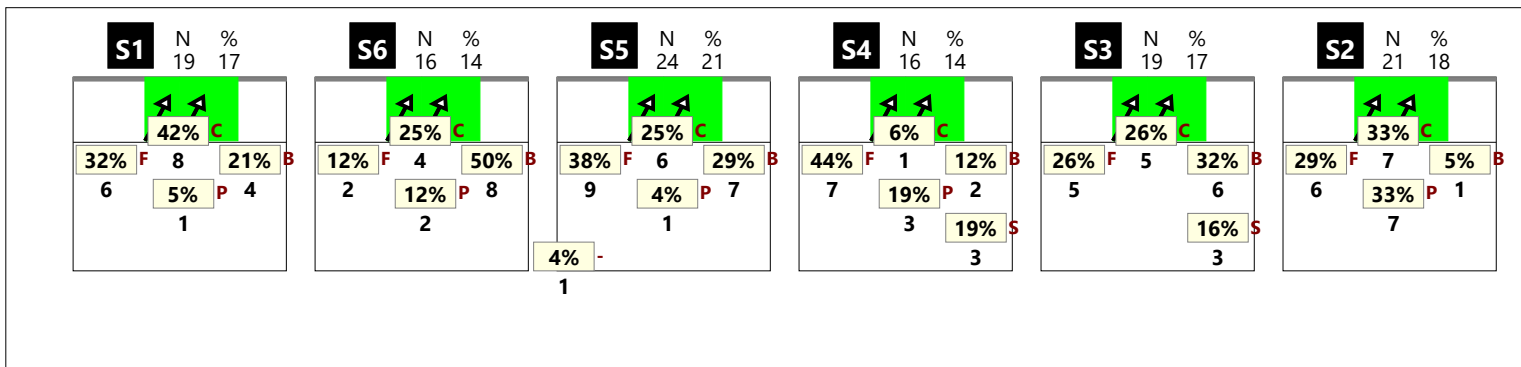
Total Zone Chart analysis



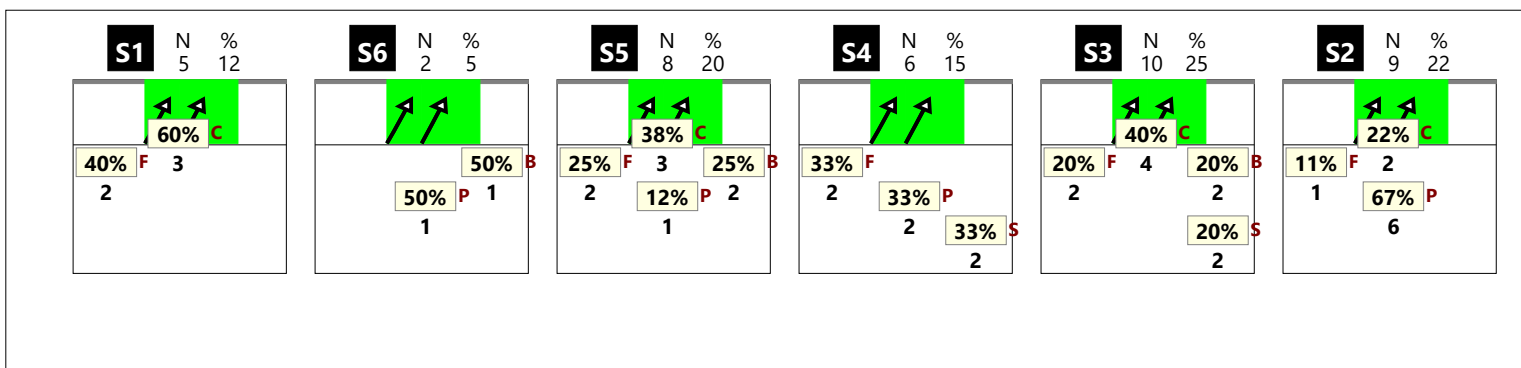
Total Zone Chart analysis



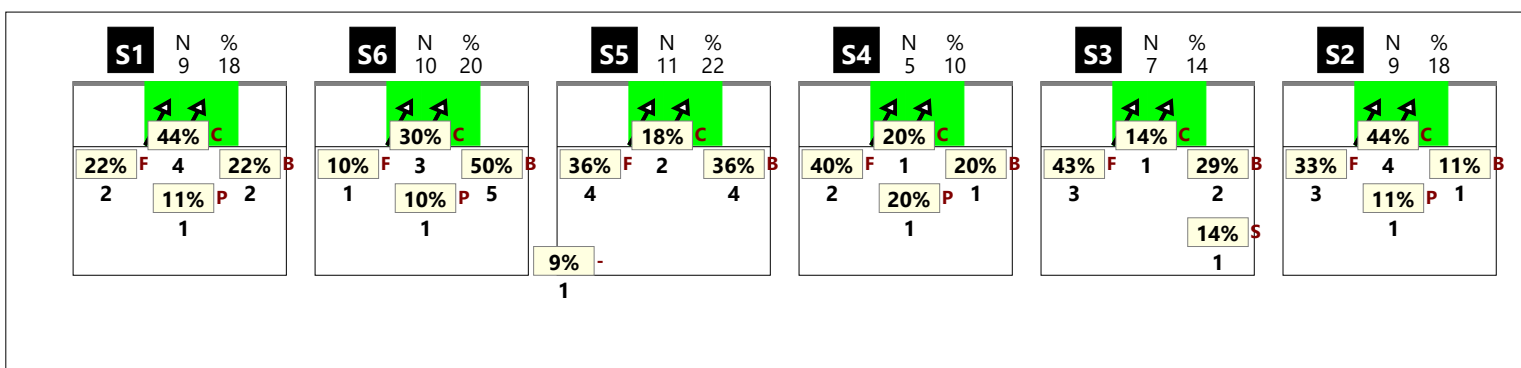
RICEZIONE TOTALE CHIAMATA 1 totale (K1 + KH)



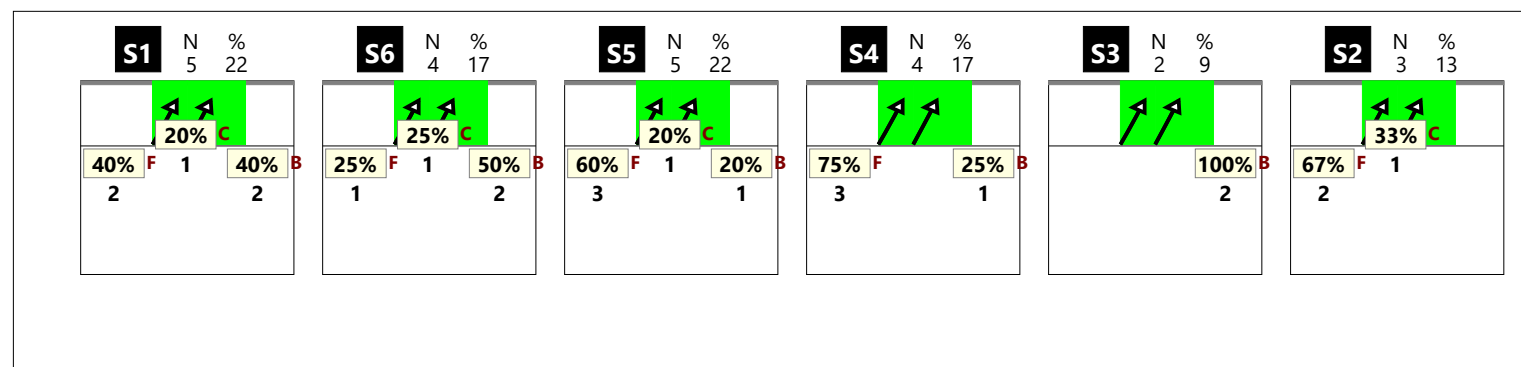
RICEZIONE # CHIAMATA 1 totale (K1 + KH)



RICEZIONE + CHIAMATA 1 totale (K1 + KH)

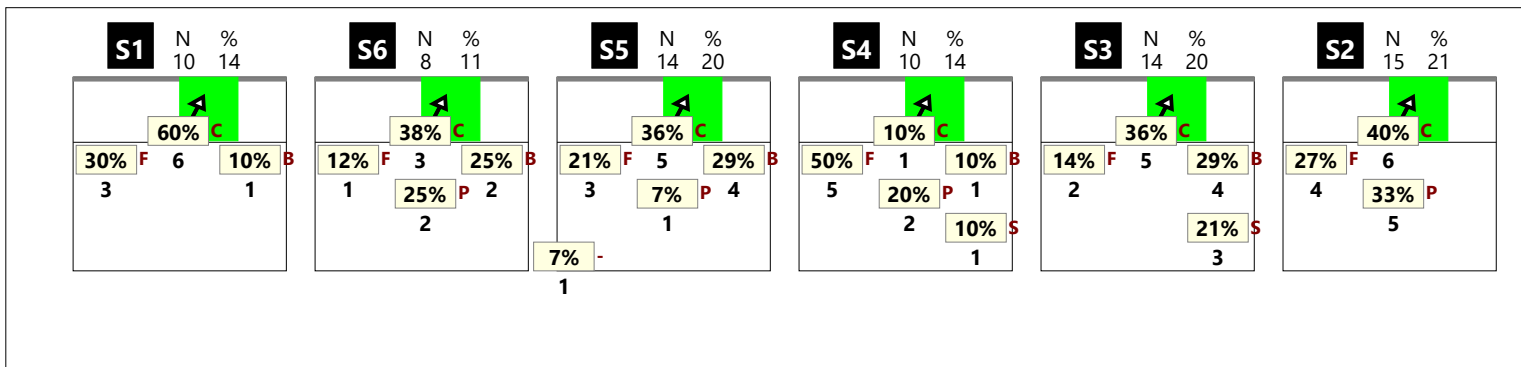


RICEZIONE ! CHIAMATA 1 totale (K1 + KH)

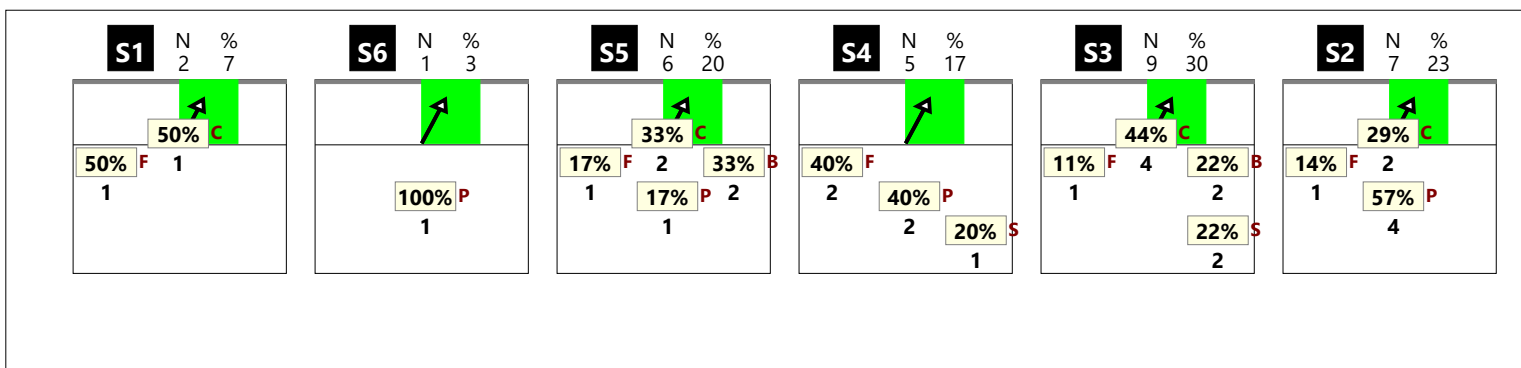


Total Print Composition - 27 - Chiamata 1 classica su #, + e !

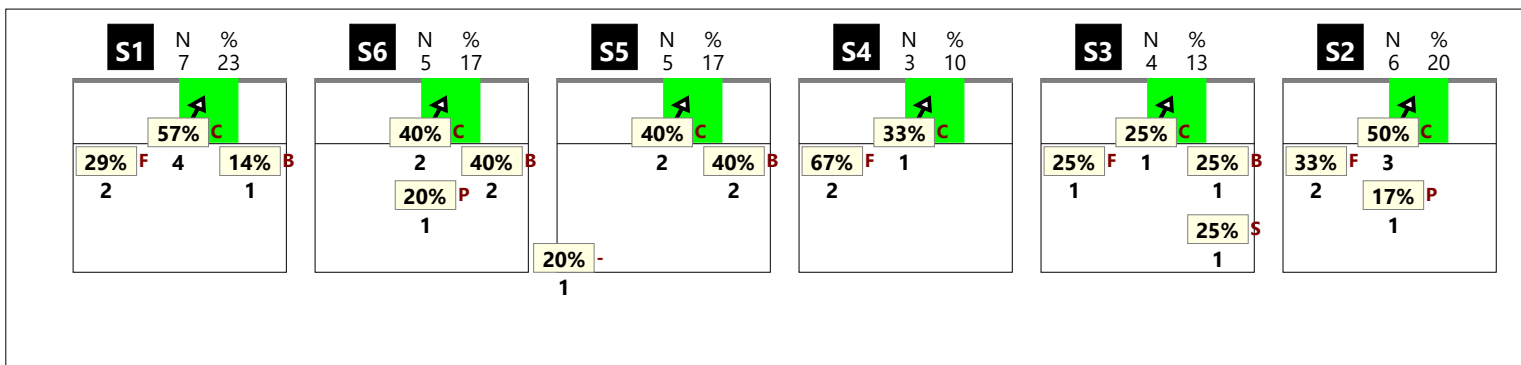
RICEZIONE TOTALE CHIAMATA 1 classica (K1)



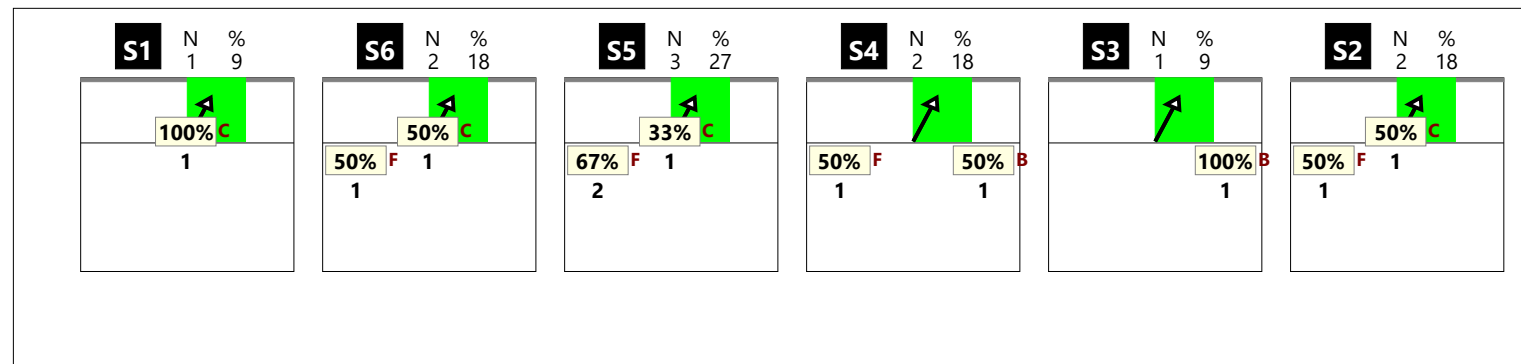
RICEZIONE # CHIAMATA 1 classica (K1)



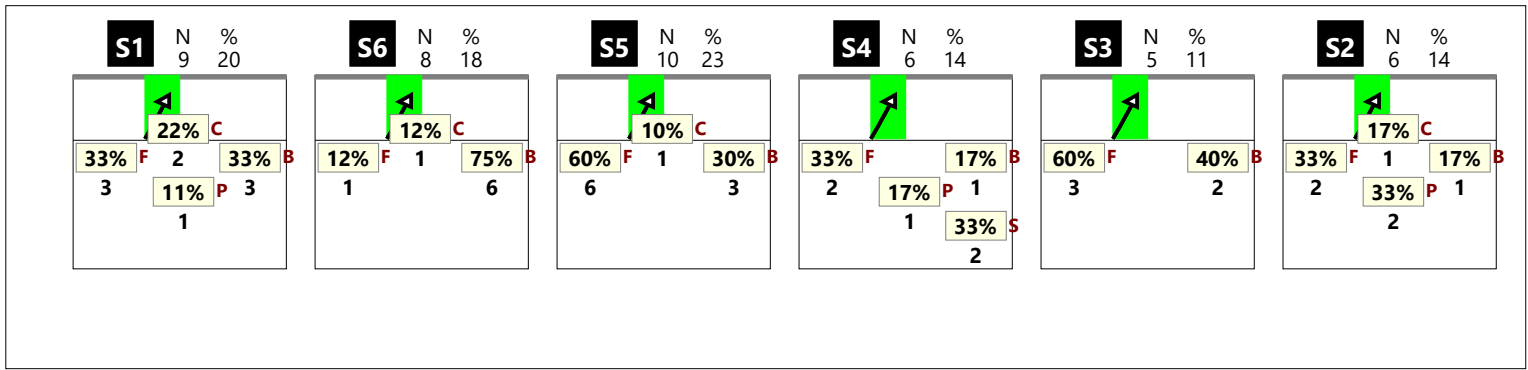
RICEZIONE + CHIAMATA 1 classica (K1)



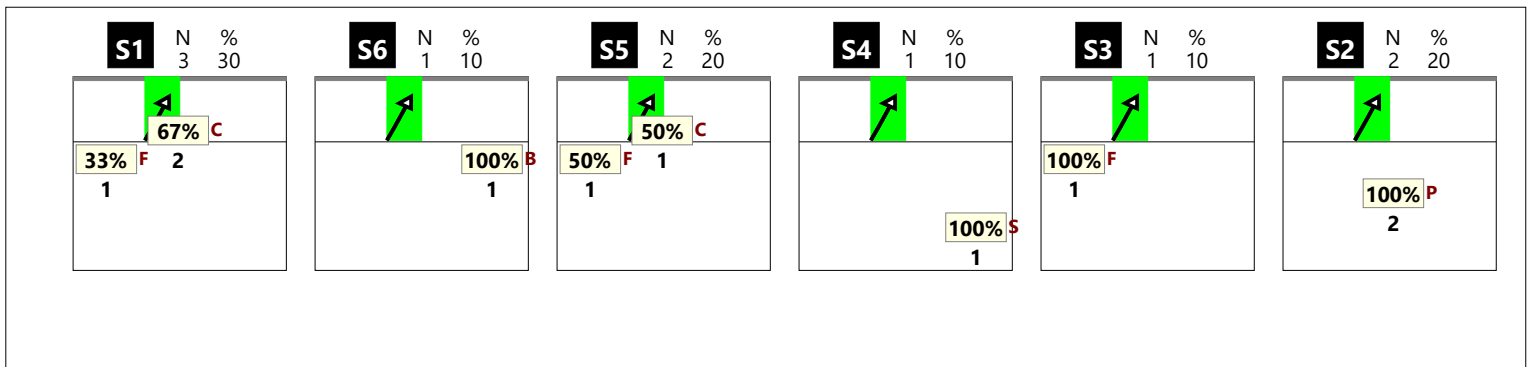
RICEZIONE ! CHIAMATA 1 classica (K1)



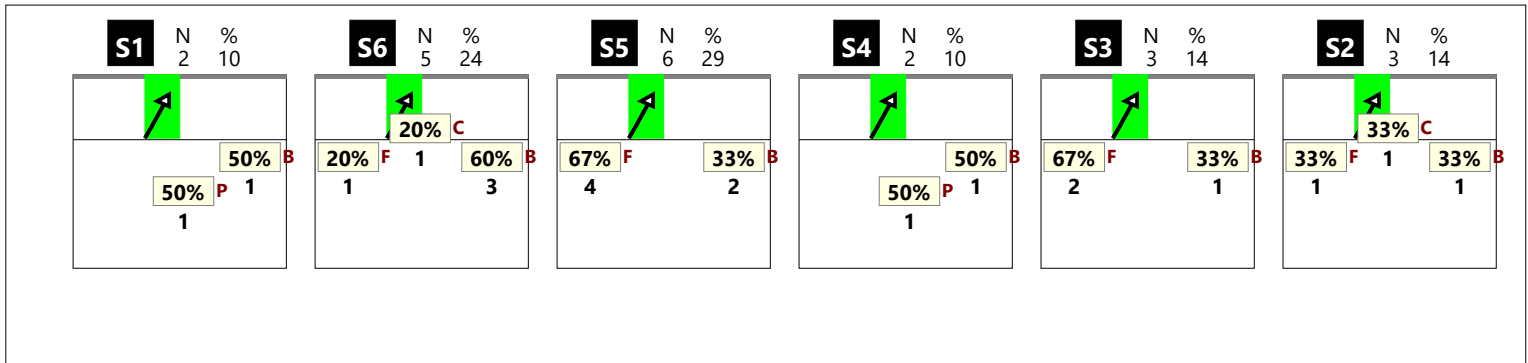
RICEZIONE TOTALE CHIAMATA 1 centro rete (KH)



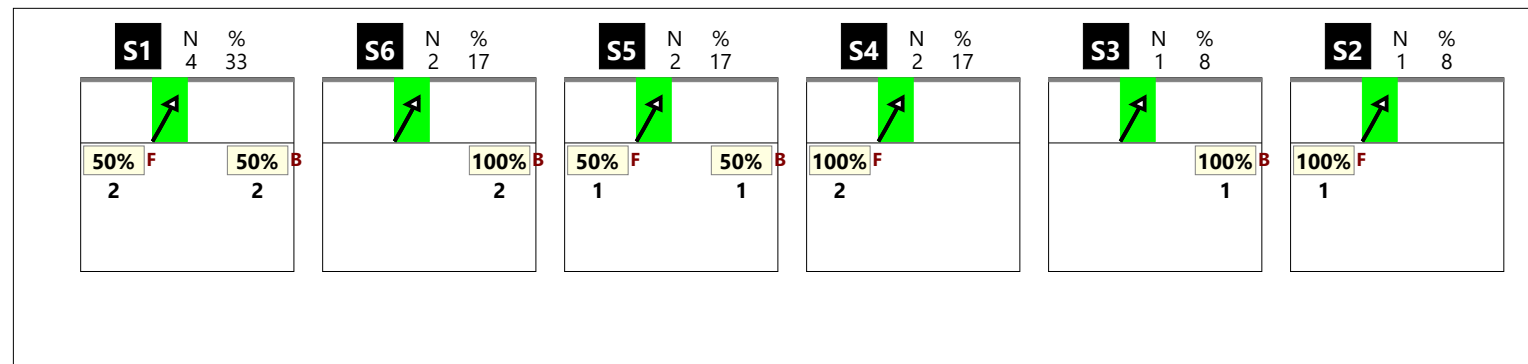
RICEZIONE # CHIAMATA 1 centro rete (KH)



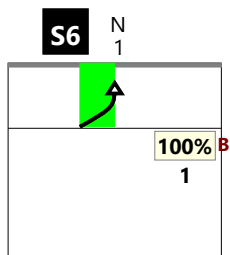
RICEZIONE + CHIAMATA 1 centro rete (KH)



RICEZIONE ! CHIAMATA 1 centro rete (KH)



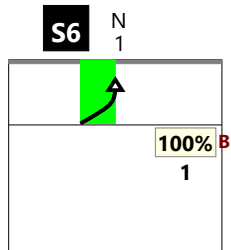
RICEZIONE TOTALE CHIAMATA 2 totale (K2 + KW)



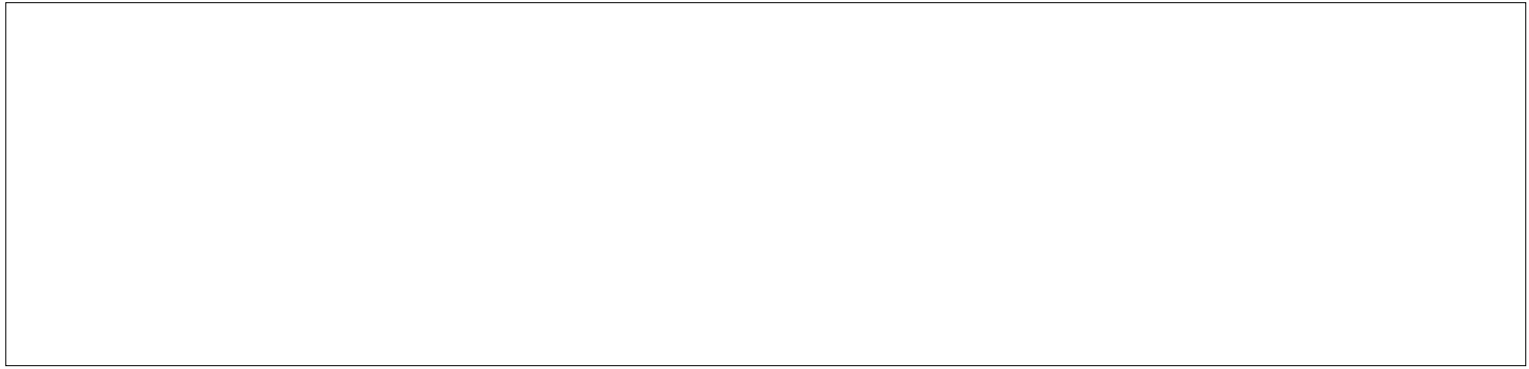
RICEZIONE # CHIAMATA 2 totale (K2 + KW)

RICEZIONE + CHIAMATA 2 totale (K2 + KW)

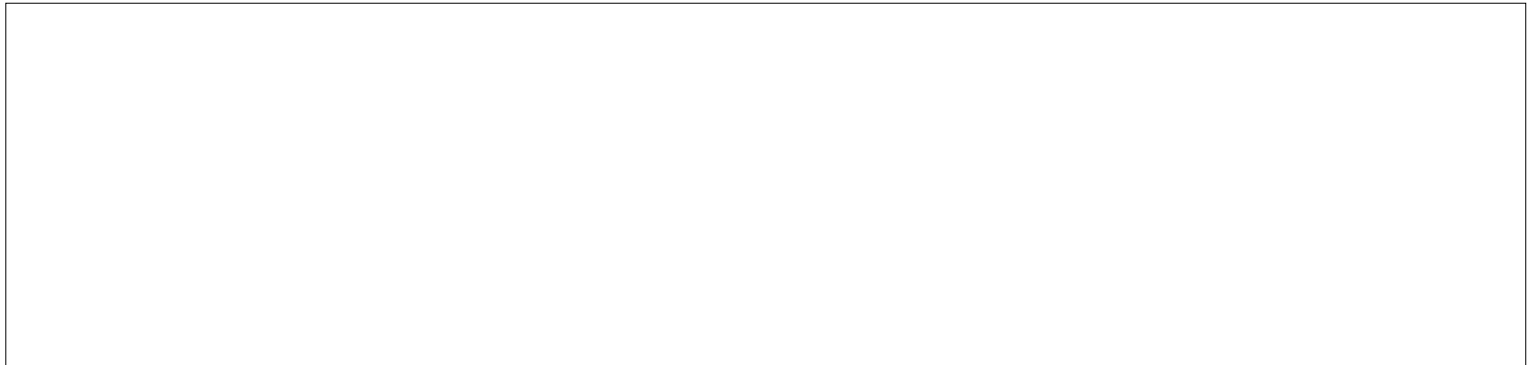
RICEZIONE ! CHIAMATA 2 totale (K2 + KW)



RICEZIONE TOTALE CHIAMATA 2 classica (K2)



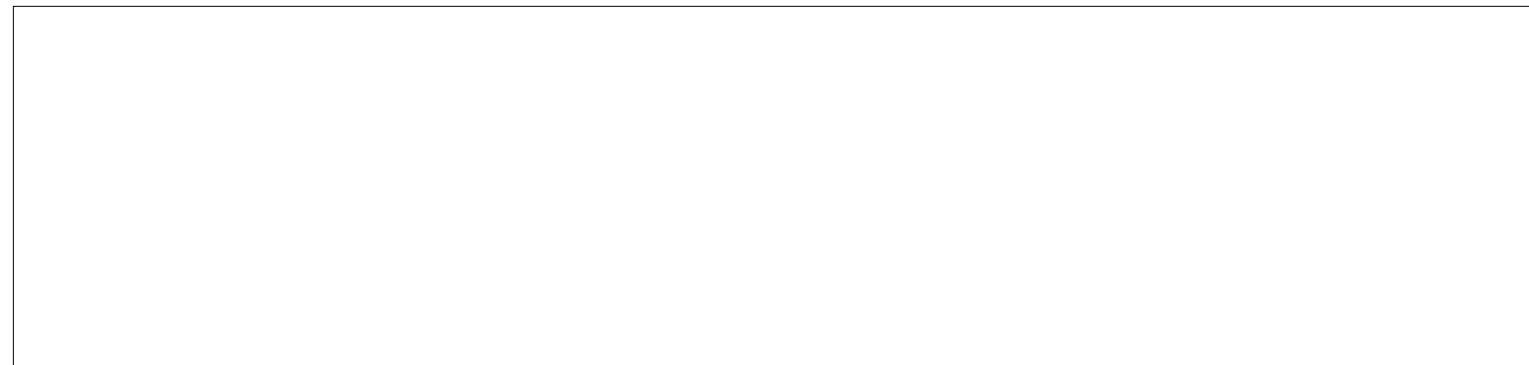
RICEZIONE # CHIAMATA 2 classica (K2)



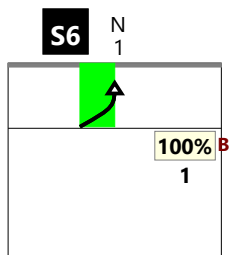
RICEZIONE + CHIAMATA 2 classica (K2)



RICEZIONE ! CHIAMATA 2 classica (K2)



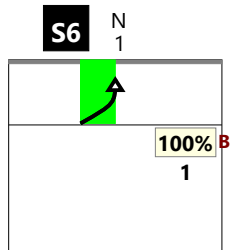
RICEZIONE TOTALE CHIAMATA 2 centro rete (KW)



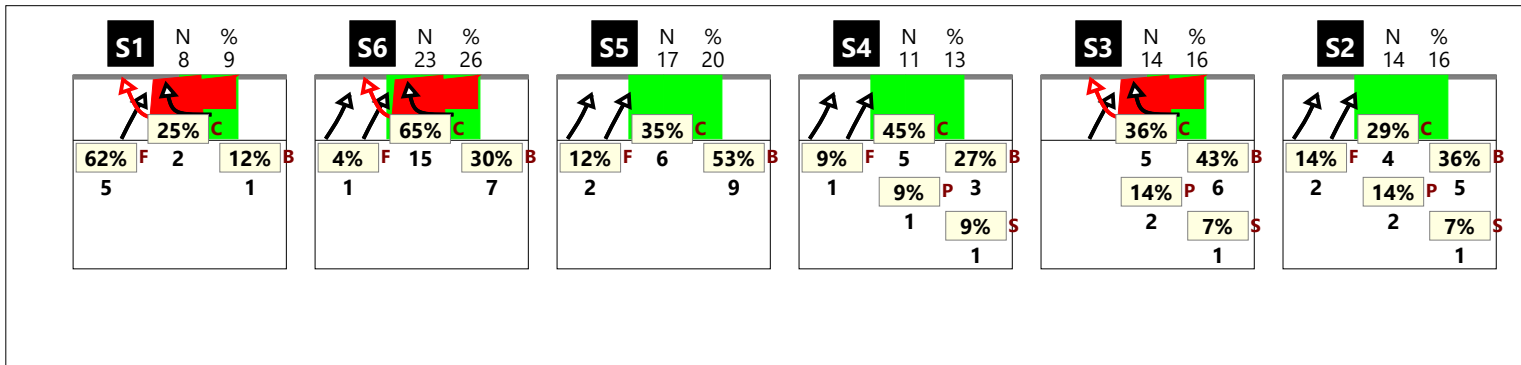
RICEZIONE # CHIAMATA 2 centro rete (KW)

RICEZIONE + CHIAMATA 2 centro rete (KW)

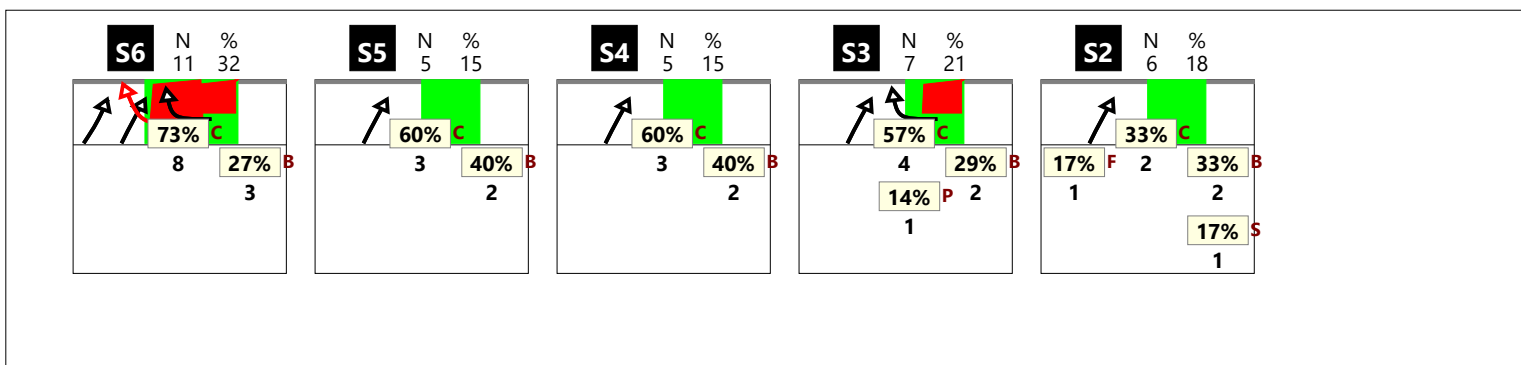
RICEZIONE ! CHIAMATA 2 centro rete (KW)



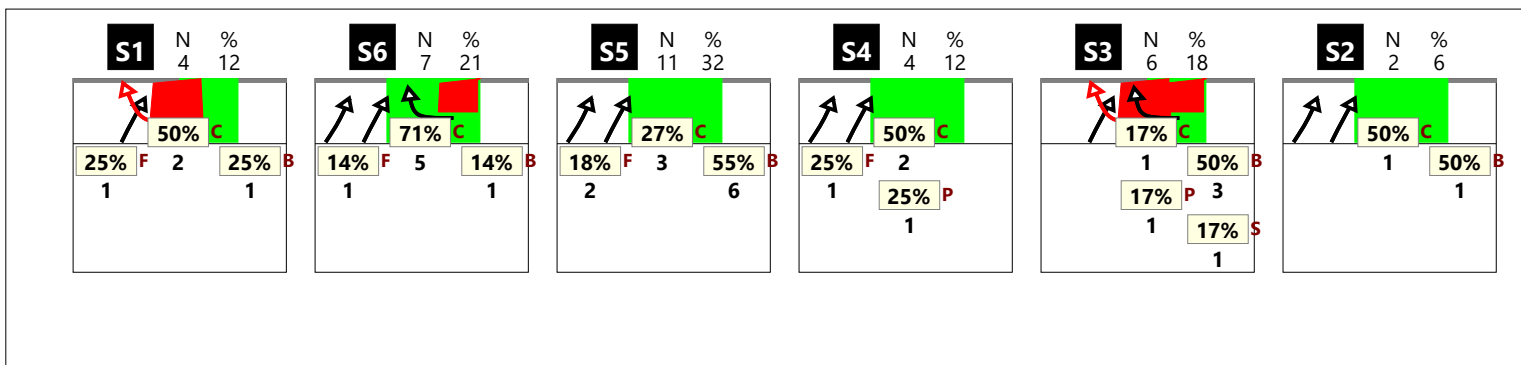
RICEZIONE TOTALE CHIAMATA 7 totale (K7 + KX + KD + KJ)



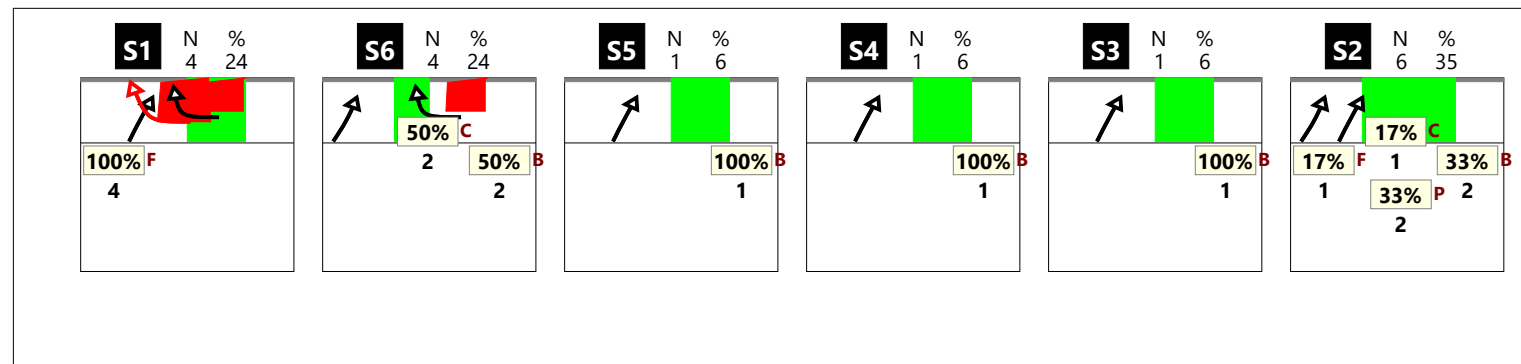
RICEZIONE # CHIAMATA 7 totale (K7 + KX + KD + KJ)



RICEZIONE + CHIAMATA 7 totale (K7 + KX + KD + KJ)

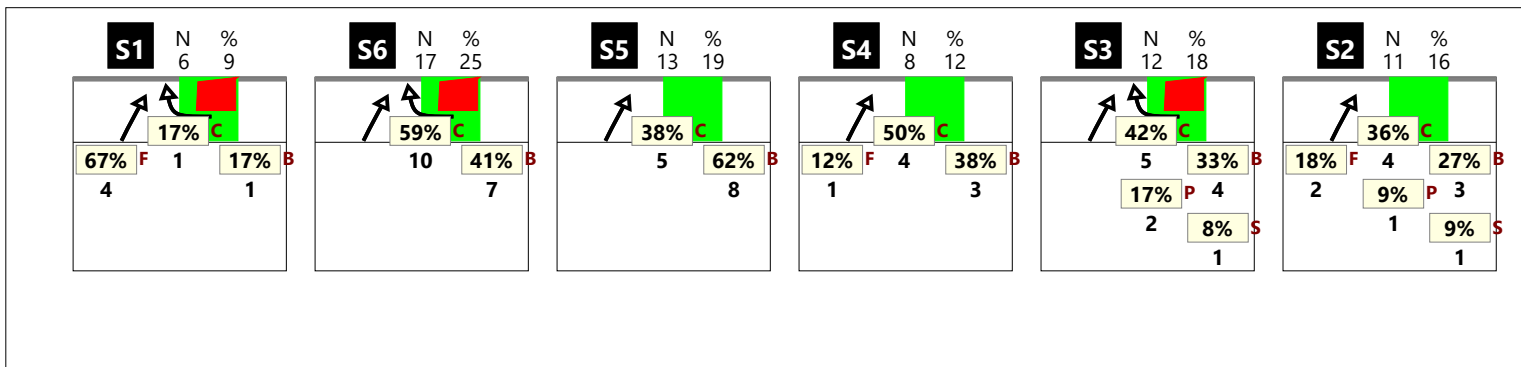


RICEZIONE ! CHIAMATA 7 totale (K7 + KX + KD + KJ)

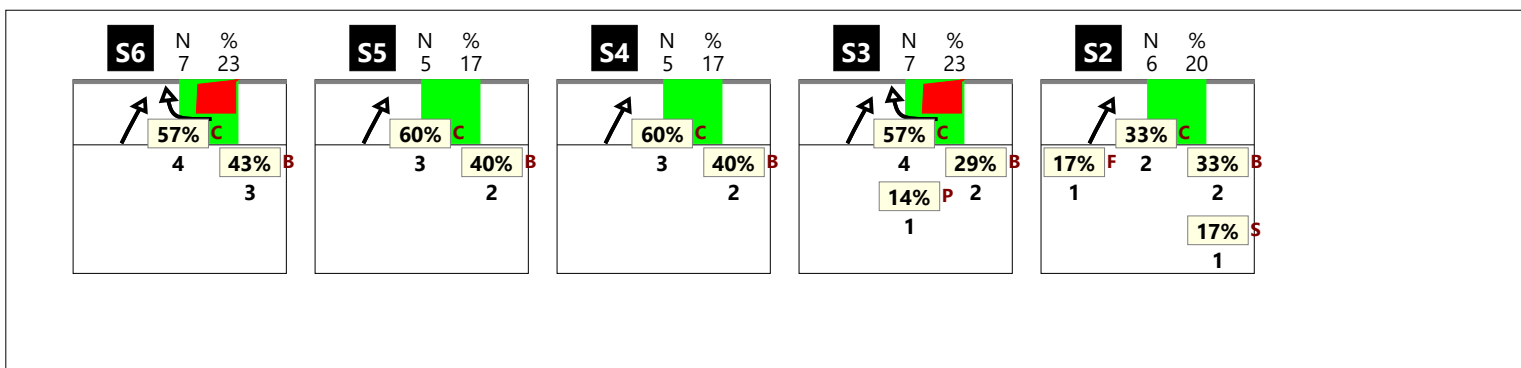


Total Print Composition - 33 - Chiamata 7 classica su #, + e !

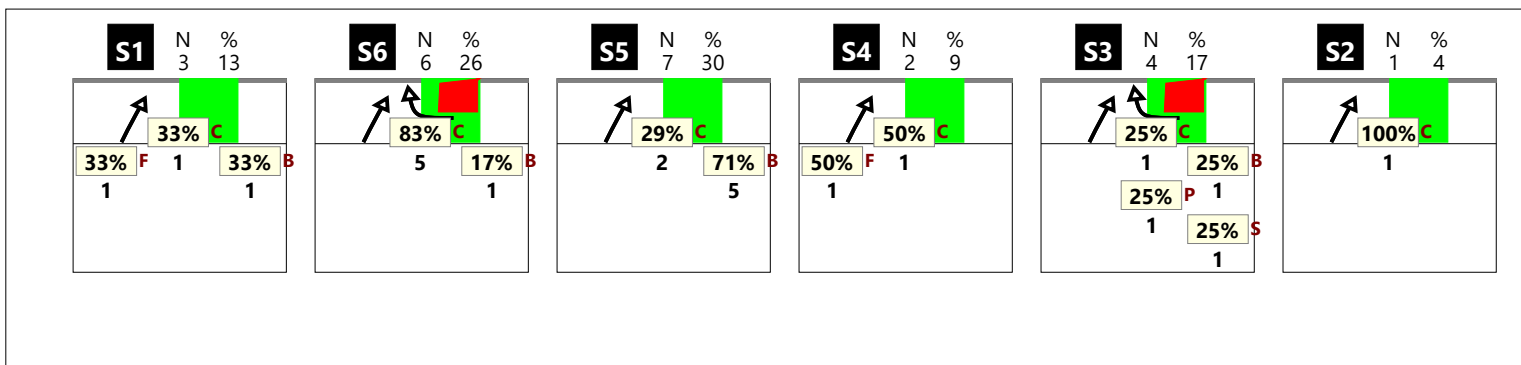
RICEZIONE TOTALE CHIAMATA 7 classica (K7 + KD)



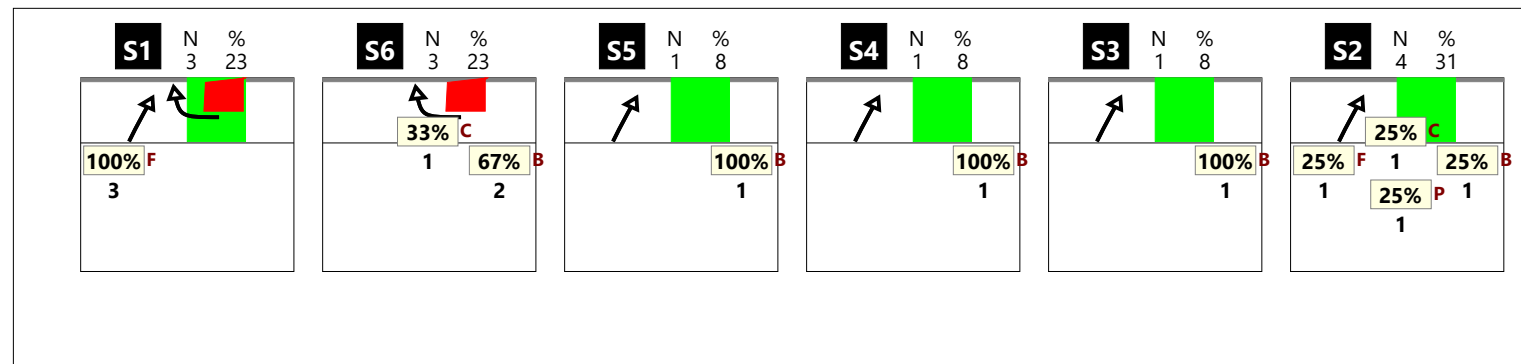
RICEZIONE # CHIAMATA 7 classica (K7 + KD)



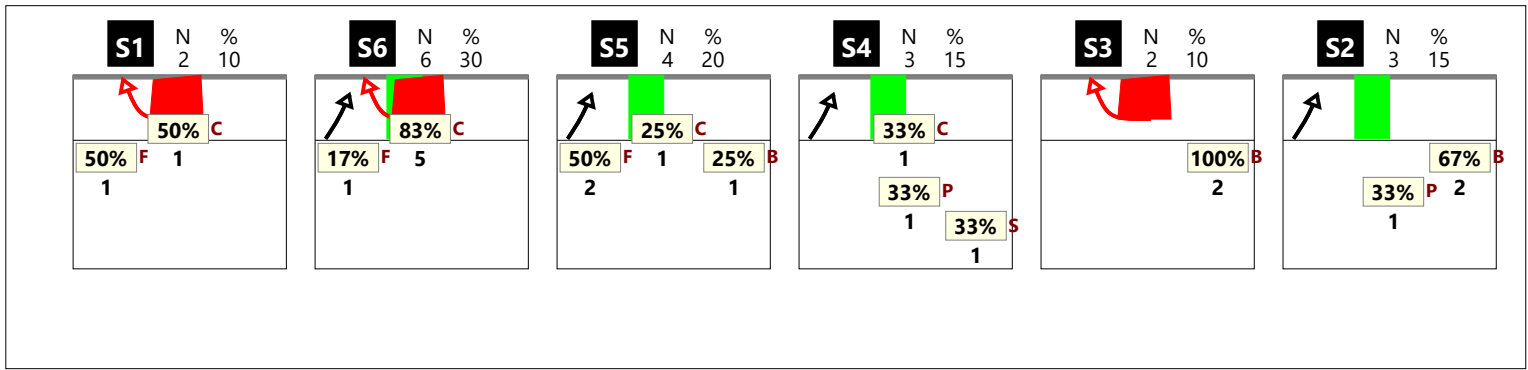
RICEZIONE + CHIAMATA 7 classica (K7 + KD)



RICEZIONE ! CHIAMATA 7 classica (K7 + KD)



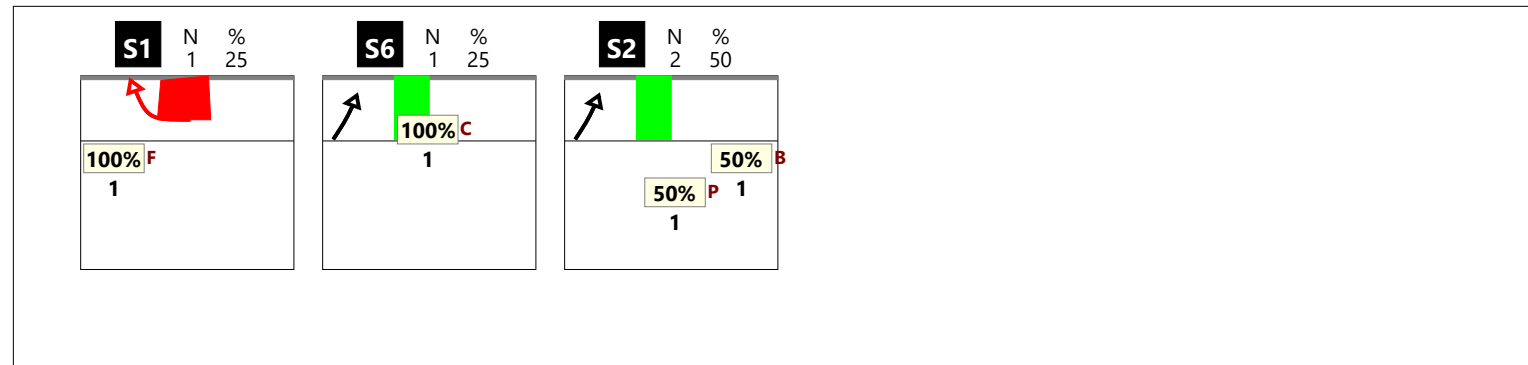
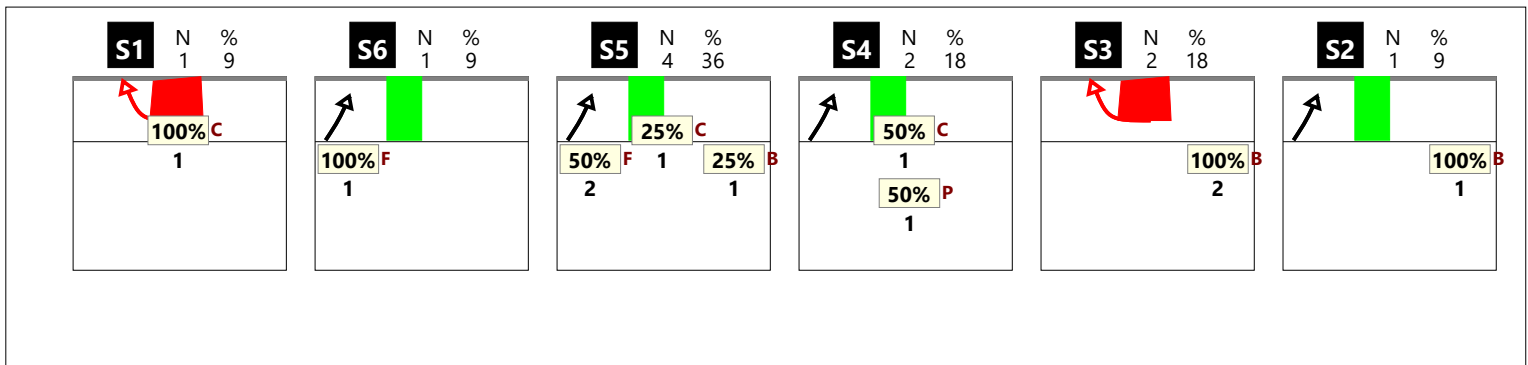
RICEZIONE TOTALE CHIAMATA 7 centro rete (KX + KJ)



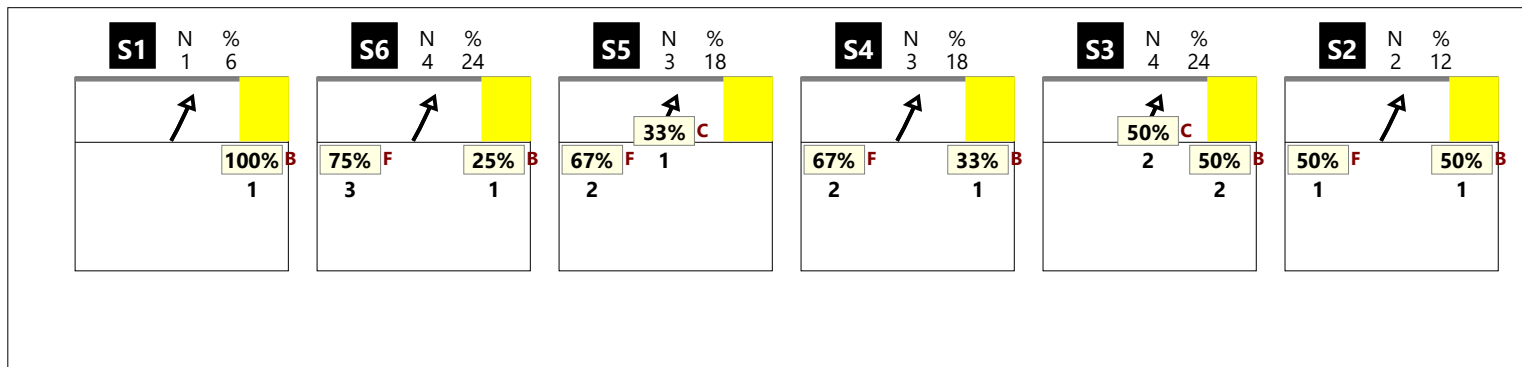
RICEZIONE # CHIAMATA 7 centro rete (KX + KJ)



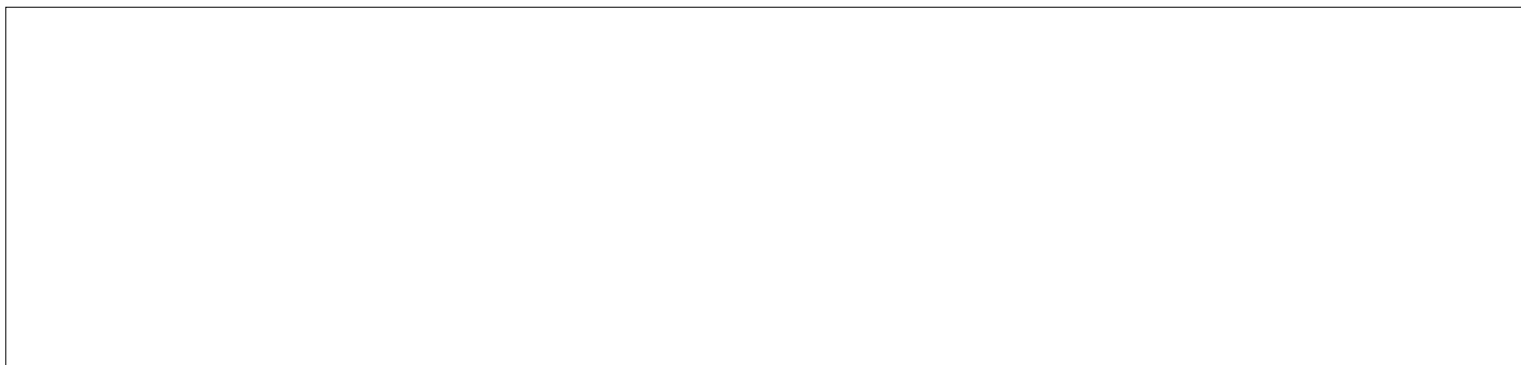
RICEZIONE + CHIAMATA 7 centro rete (KX + KJ)



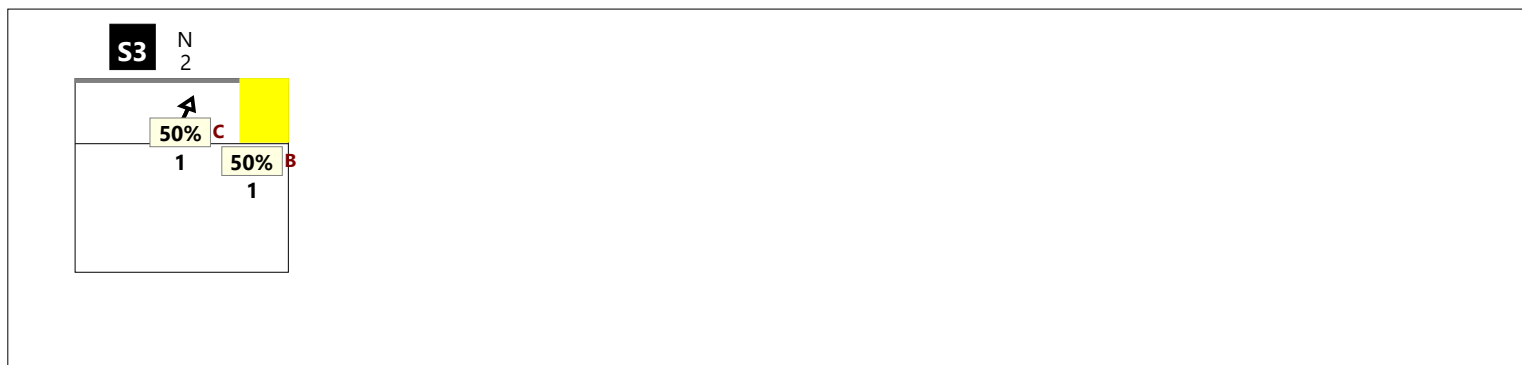
RICEZIONE TOTALE CHIAMATA KC



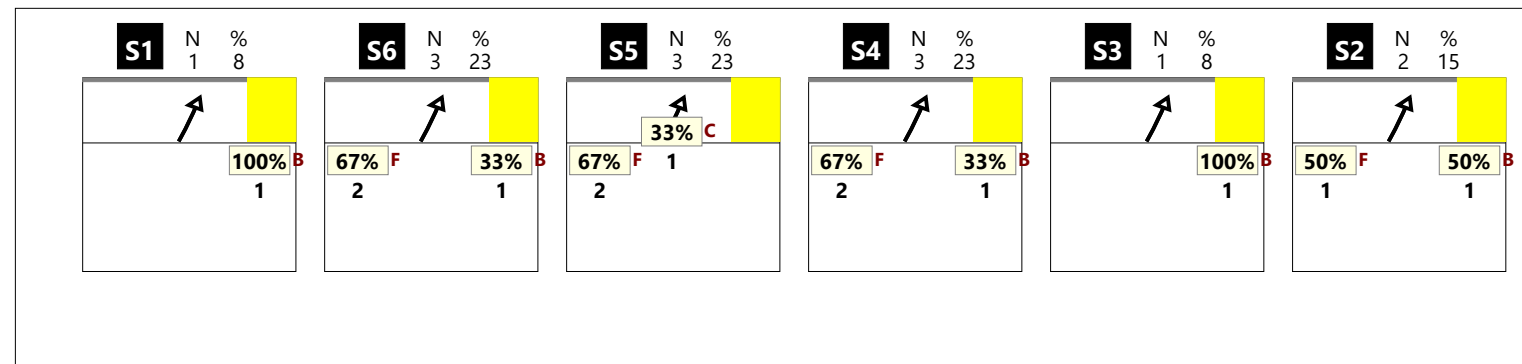
RICEZIONE # CHIAMATA KC



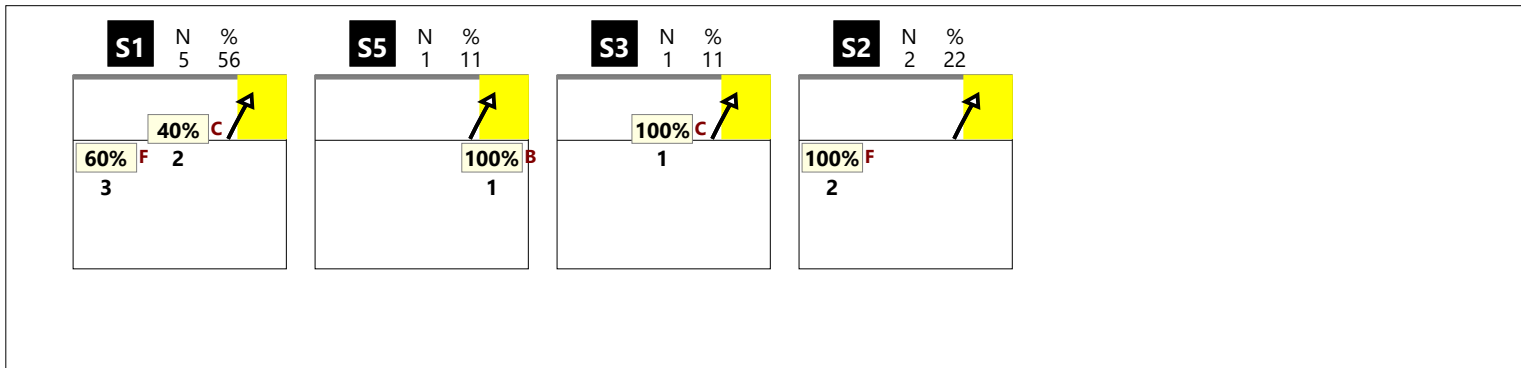
RICEZIONE + CHIAMATA KC



RICEZIONE ! CHIAMATA KC



RICEZIONE TOTALE CHIAMATA KM



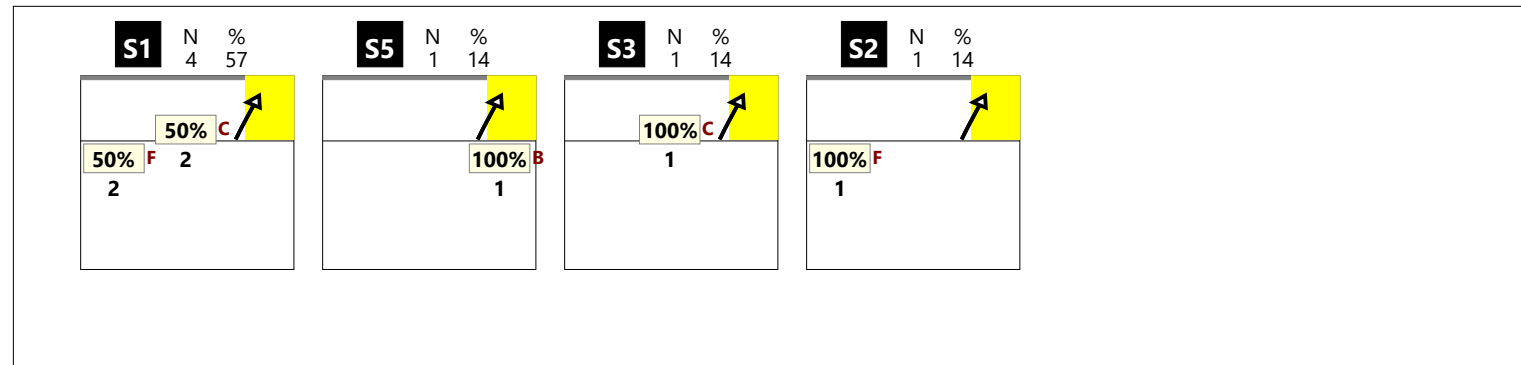
RICEZIONE # CHIAMATA KM



RICEZIONE + CHIAMATA KM



RICEZIONE ! CHIAMATA KM



RICEZIONE TOTALE CHIAMATA KA

--

RICEZIONE # CHIAMATA KA

--

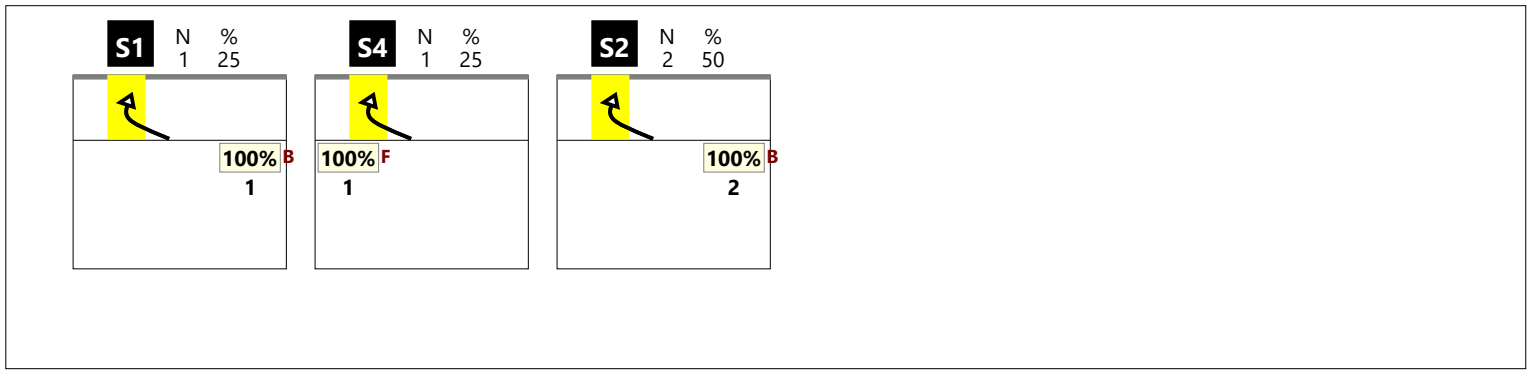
RICEZIONE + CHIAMATA KA

--

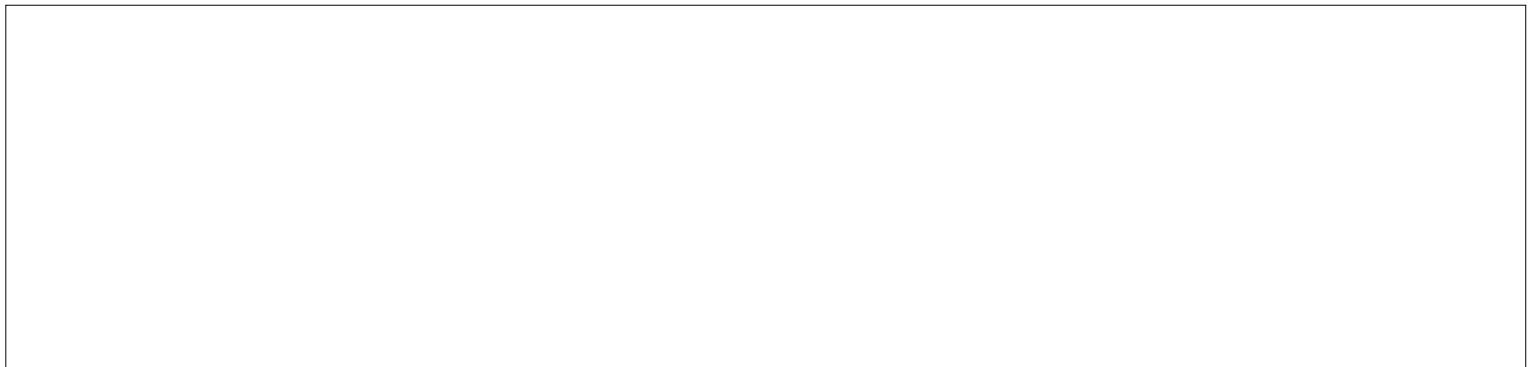
RICEZIONE ! CHIAMATA KA

--

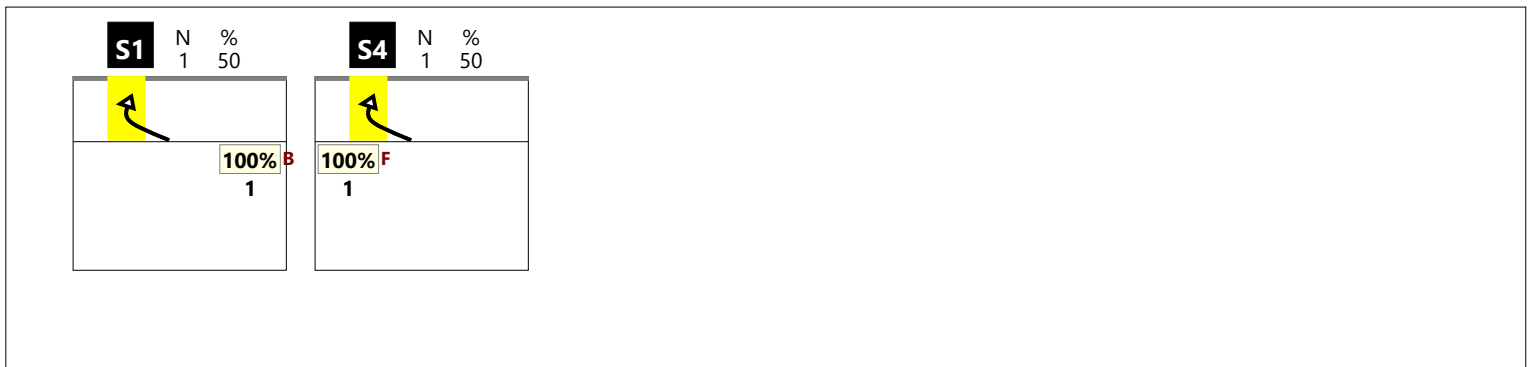
RICEZIONE TOTALE CHIAMATA KP



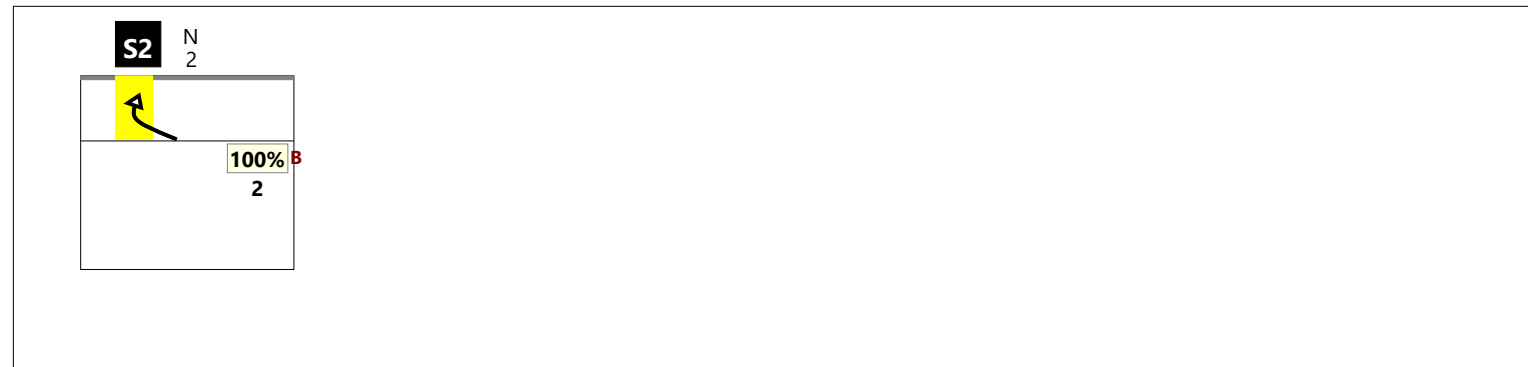
RICEZIONE # CHIAMATA KP



RICEZIONE + CHIAMATA KP



RICEZIONE ! CHIAMATA KP



RICEZIONE TOTALE CHIAMATA KS

--

RICEZIONE # CHIAMATA KS

--

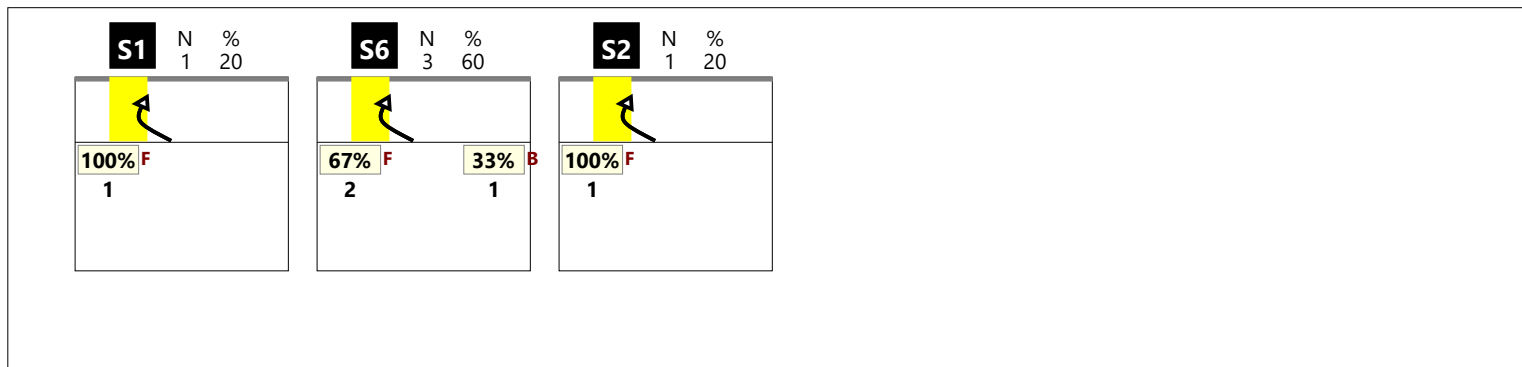
RICEZIONE + CHIAMATA KS

--

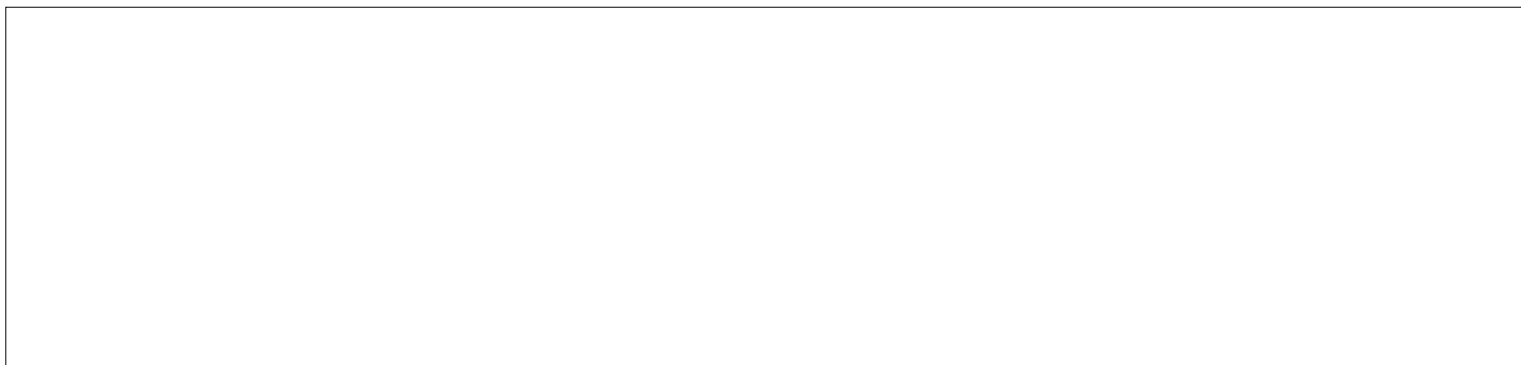
RICEZIONE ! CHIAMATA KS

--

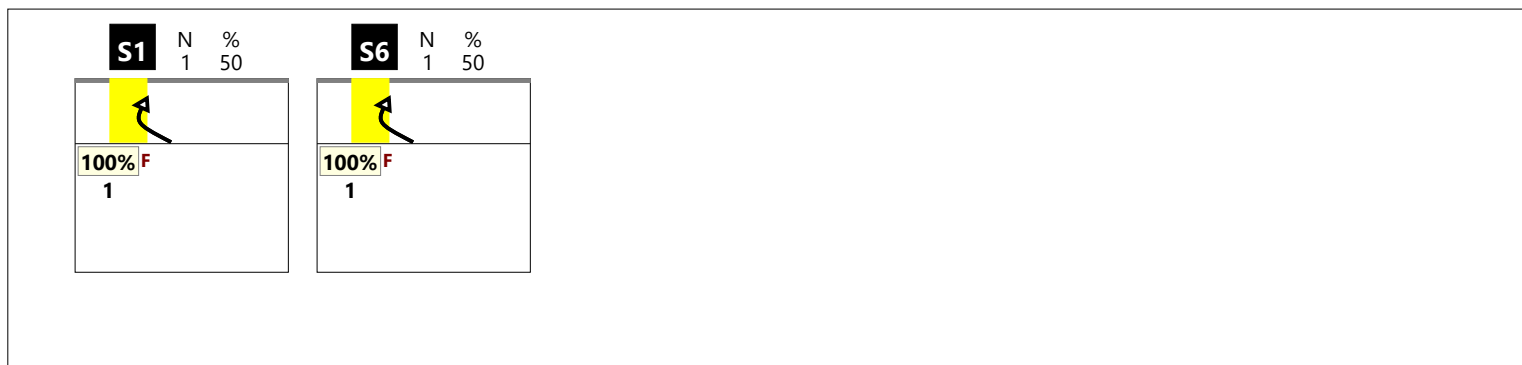
RICEZIONE TOTALE CHIAMATA KQ



RICEZIONE # CHIAMATA KQ



RICEZIONE + CHIAMATA KQ



RICEZIONE ! CHIAMATA KQ



DISTRIBUZIONE PER ZONE DI RICEZIONE

RICEZIONE BUONA DA ZONA 1

8	20%	17	42%	6	15%
62%	62%	53%	71%	17%	33%
		3	8%	5	12%
		33%	67%	60%	60%
		1		2%	

Total events Total events %
Efficiency % Events # in %

RICEZIONE BUONA DA ZONA 6-1

1	50%	1	50%		
		100%	100%		

Total events Total events %
Efficiency % Events # in %

TOTALE DA ZONA 1

9	21%	18	43%	6	14%
56%	56%	56%	72%	17%	33%
		3	7%	5	12%
		33%	67%	60%	60%
		1		2%	

Total events Total events %
Efficiency % Events # in %

RICEZIONE BUONA DA ZONA 5

10	19%	18	35%	9	17%
-10%	20%	67%	72%	11%	33%
		4	8%	10	19%
		25%	50%	70%	70%
		1		2%	
		100%		100%	

Total events Total events %
Efficiency % Events # in %

RICEZIONE BUONA DA ZONA 5-6

		3	75%		
		100%	100%		
		1		25%	

Total events Total events %
Efficiency % Events # in %

TOTALE DA ZONA 5

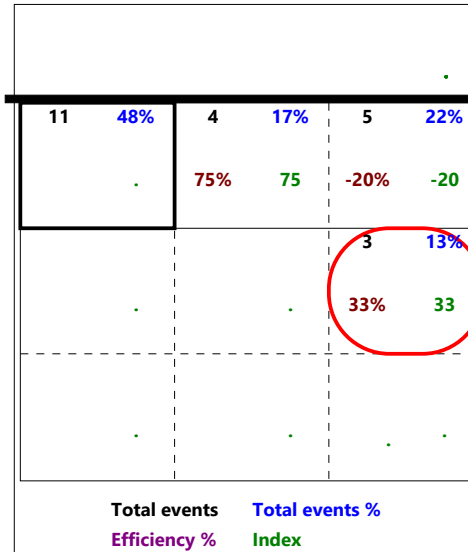
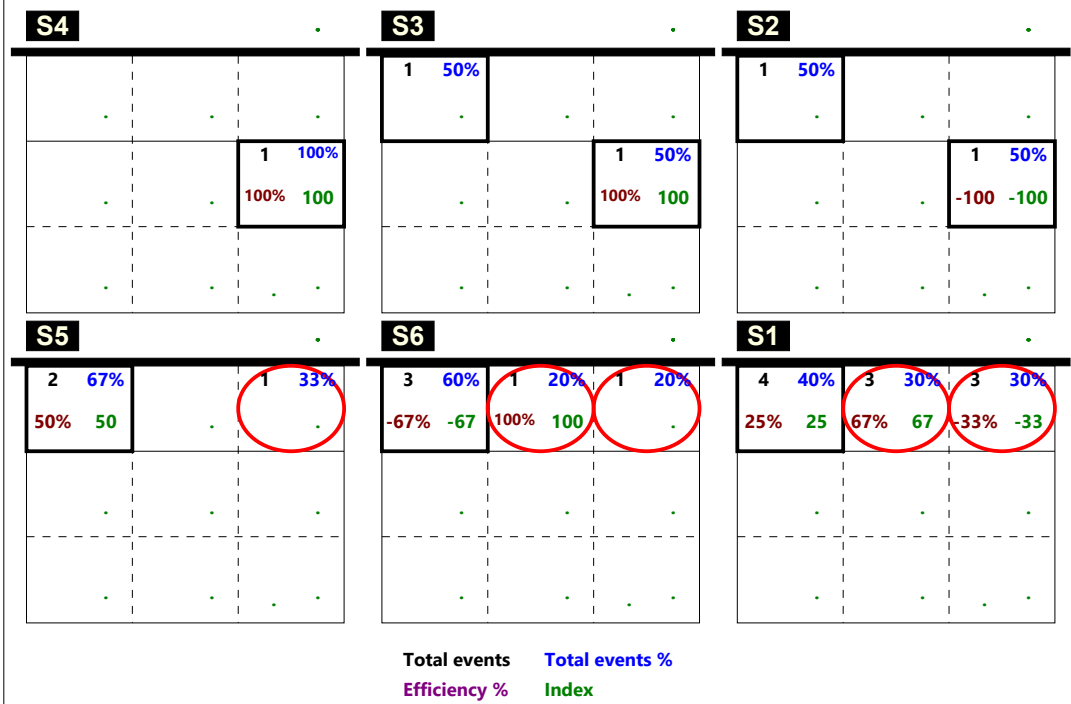
10	18%	21	38%	9	16%
-10%	20%	71%	76%	11%	33%
		4	7%	10	18%
		25%	50%	70%	70%
		2		4%	
		50%		50%	

Total events Total events %
Efficiency % Events # in %

DISTRIBUZIONE PER ZONE DI RICEZIONE

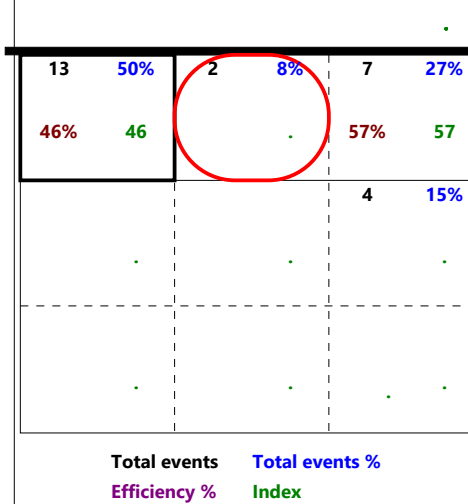
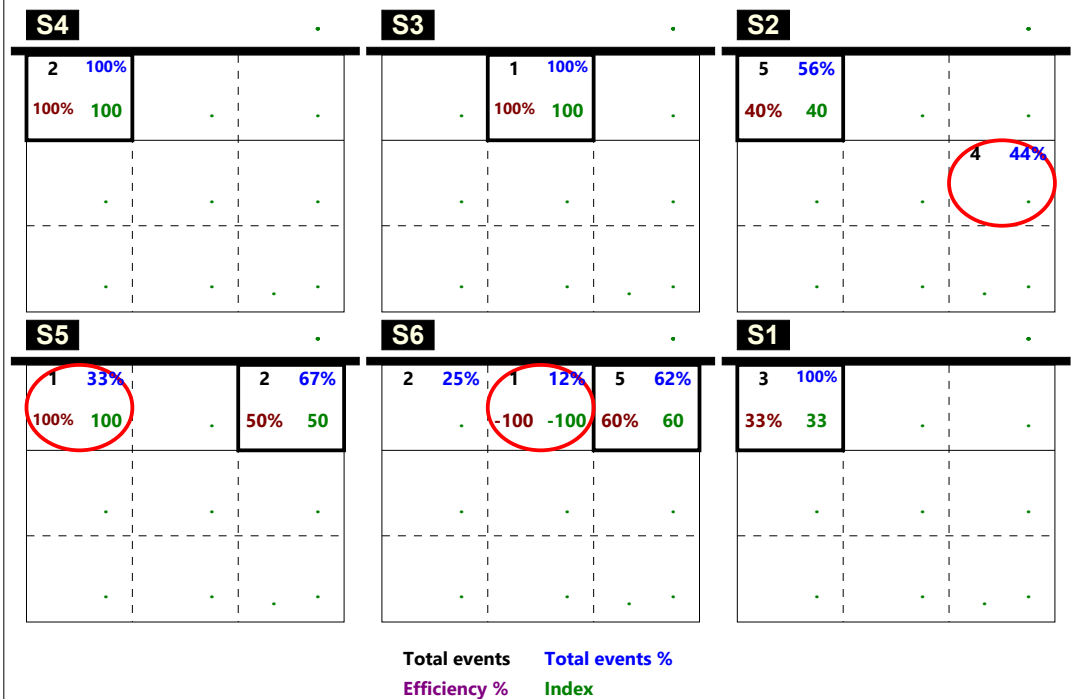
RICEZIONE ESCLAMATIVA IN ZONA 1

Total Zone Chart analysis



RICEZIONE ESCLAMATIVA IN ZONA 5

Total Zone Chart analysis



DISTRIBUZIONE PER ZONE DI RICEZIONE

RICEZIONE BUONA DA ZONA 6

10	21%	16	33%	7	15%
60%	60%	62%	75%	57%	71%
		9	19%	2	4%
		33%	67%	50%	50%
		4	8%		
		50%	50%		

Total events Total events %
 Efficiency % Events # in %

RICEZIONE CORTA TOTALE

3	27%	3	27%	4	36%
100%	100%	33%	33%	75%	75%
				1	9%
				-100%	

Total events Total events %
 Efficiency % Events # in %

RICEZIONE CORTA Z2

1	50%			1	50%
100%	100%			100%	100%

Total events Total events %
 Efficiency % Events # in %

RICEZIONE CORTA Z3

1	17%	3	50%	1	17%
100%	100%	33%	33%		
				1	17%
				-100%	

Total events Total events %
 Efficiency % Events # in %

RICEZIONE CORTA Z4

1	33%	2	67%
100%	100%	100%	100%

Total events Total events %
 Efficiency % Events # in %

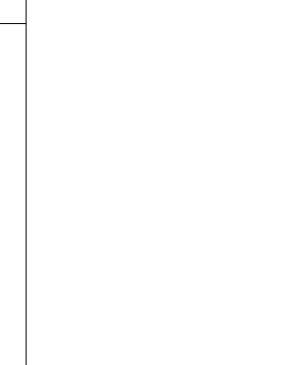
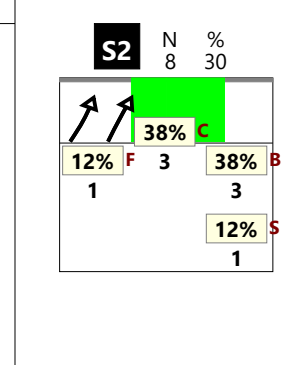
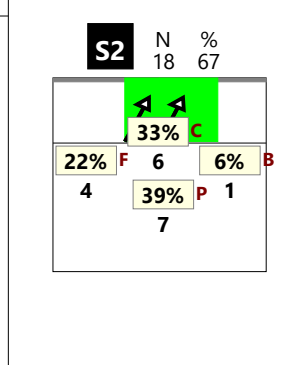
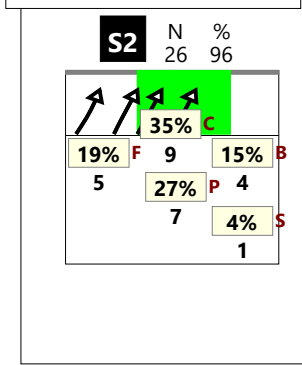
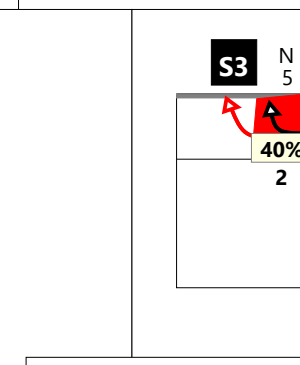
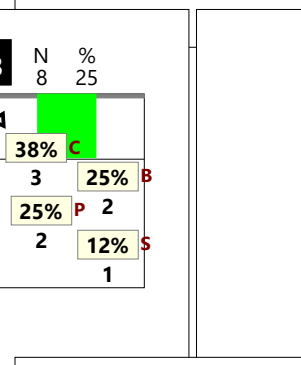
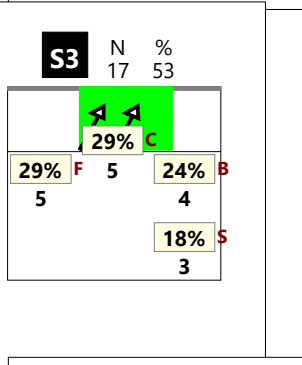
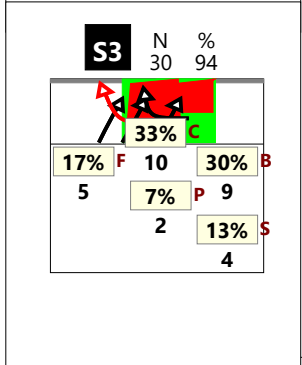
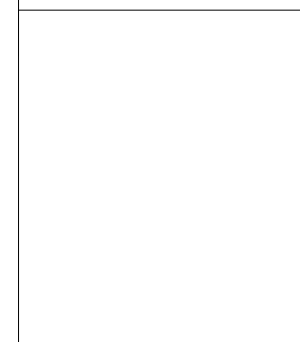
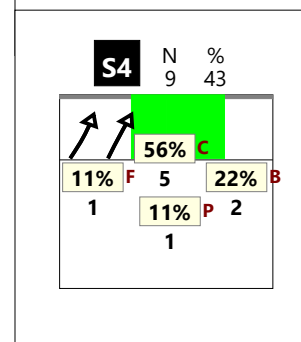
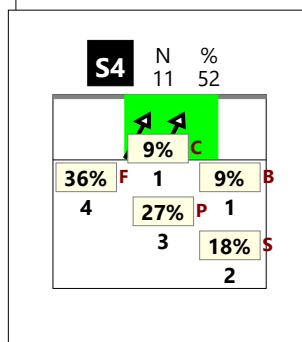
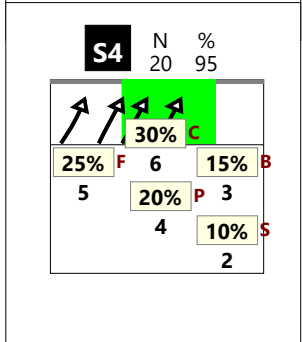
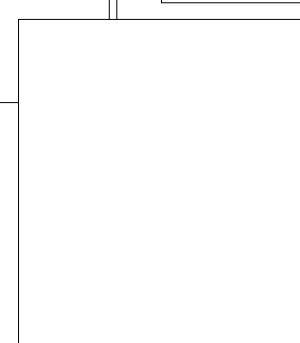
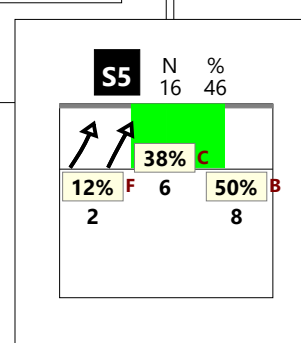
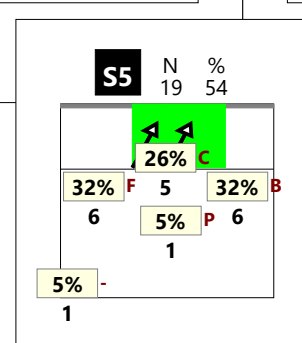
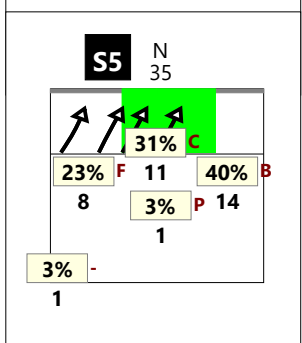
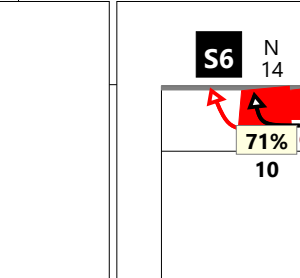
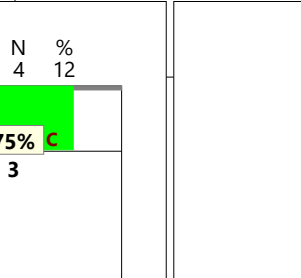
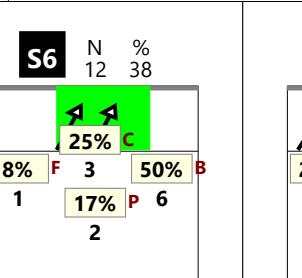
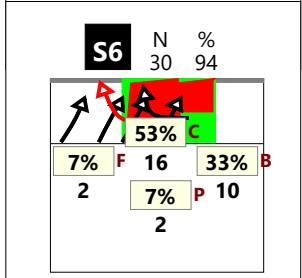
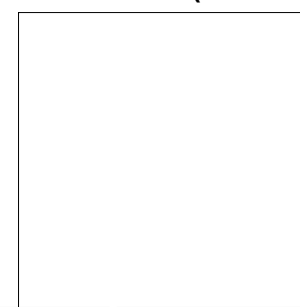
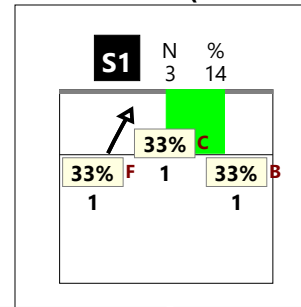
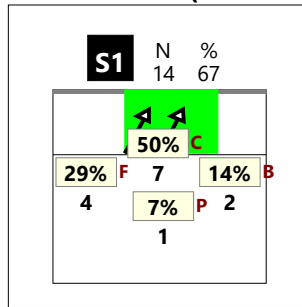
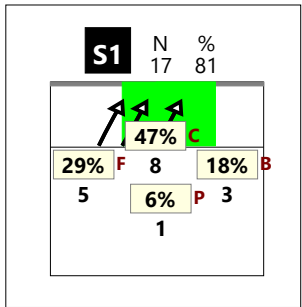
Total Print Composition - 44 - Distribuzione su ricezione regolare per rotazione

Totale

Chiamata 1 (K1 + KH)

Chiamata 7 (K7 + KX)

Chiamata 2 (K2 + KW)

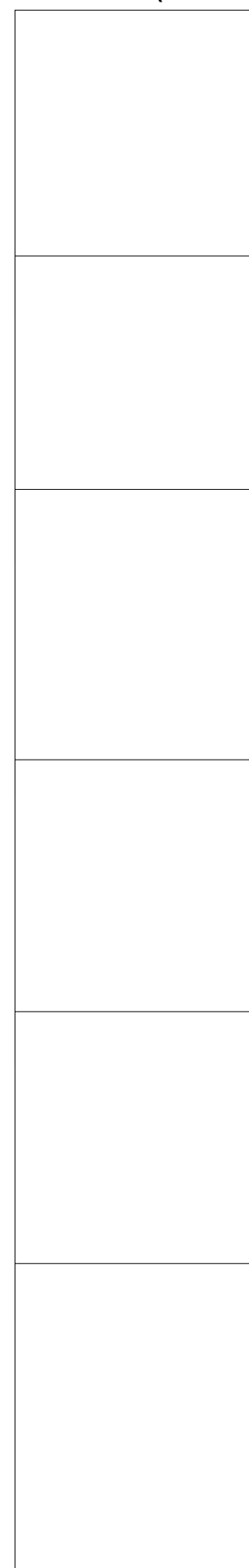
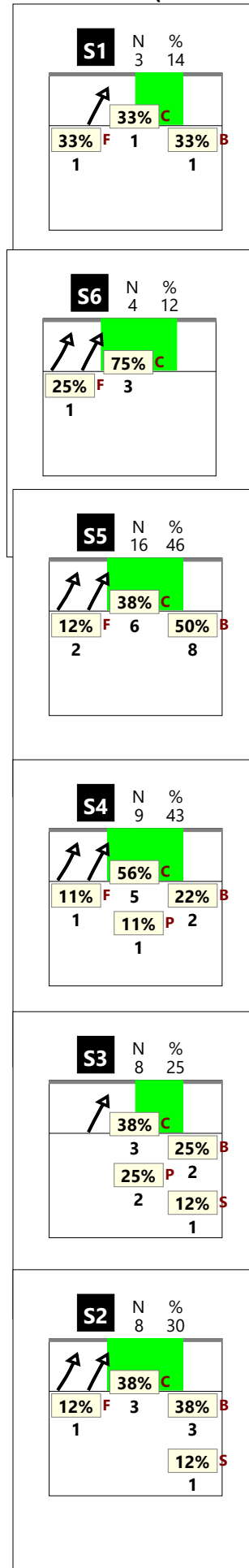
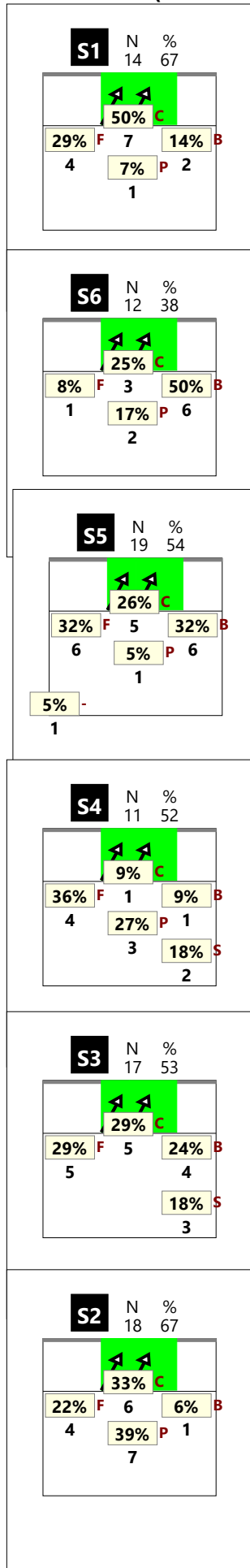
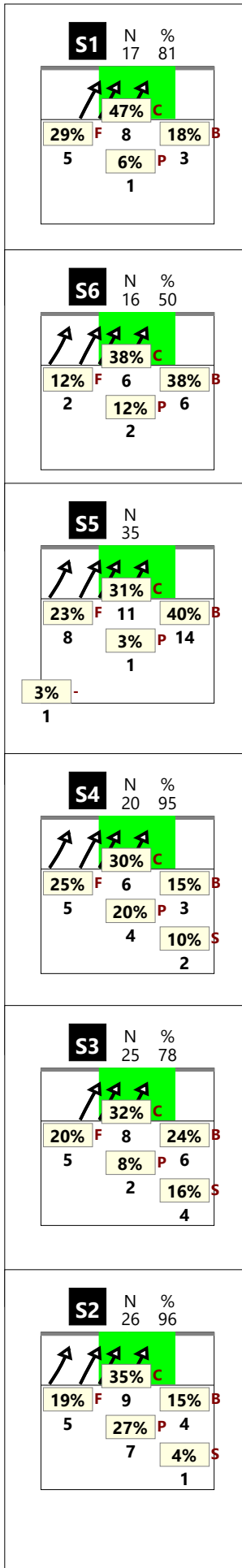


Totale

Chiamata 1 (K1 + KH)

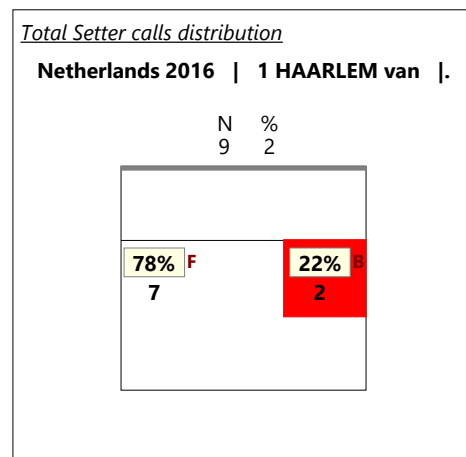
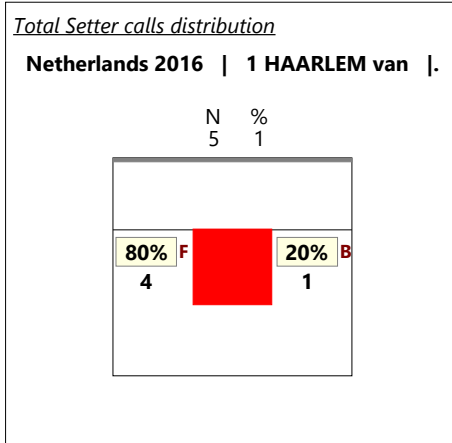
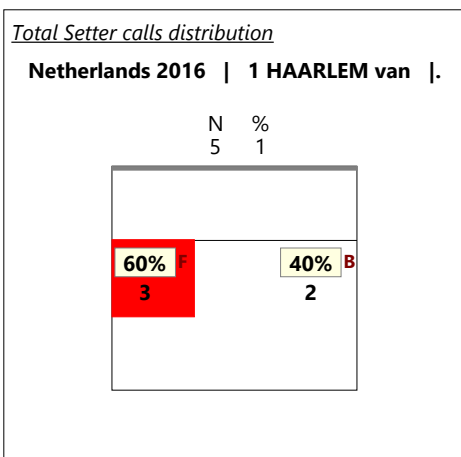
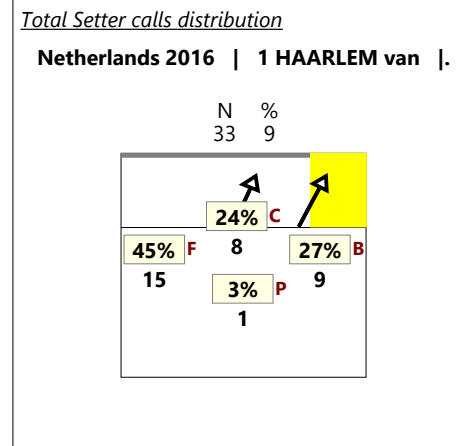
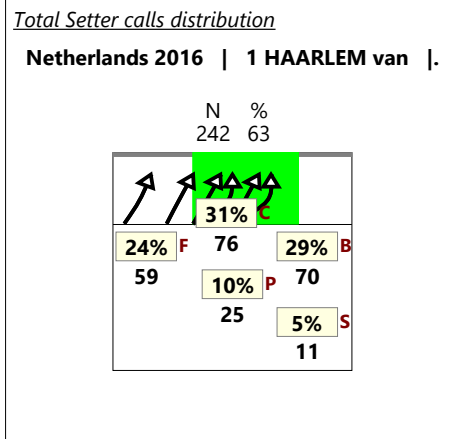
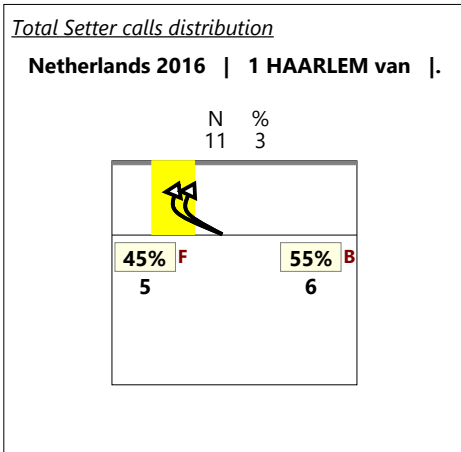
Chiamata 7 (K7 + KX)

Chiamata 2 (K2 + KW)

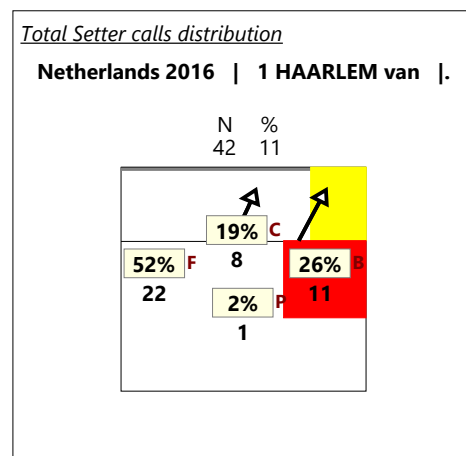
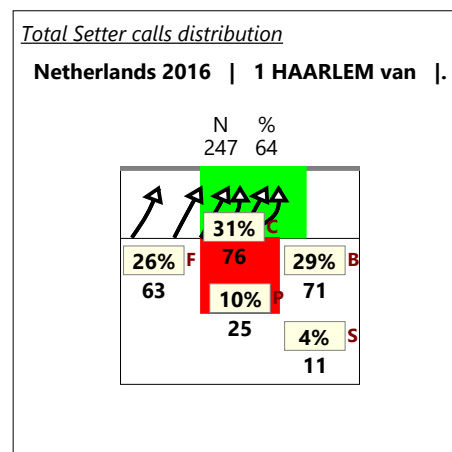
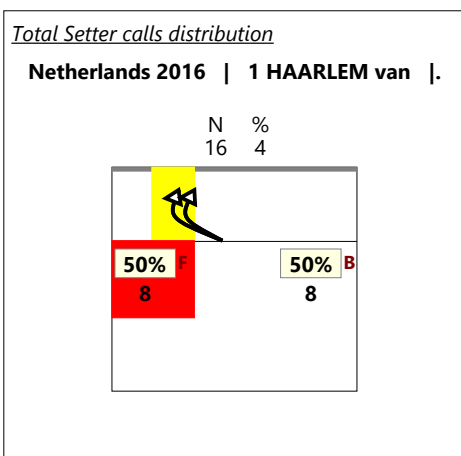


Distribuzione per zone di alzata

(cambio palla)



*solo zona centrale



*solo zona centrale

Total Print Composition - 47 - Distribuzione per ruolo del ricettore

Total Zone Chart analysis

S4	S3	S2
S5	S6	S1

Total events Total events % Efficiency % Events # in %		
Ricezione buona del martello 1^ linea		

Total Zone Chart analysis

S4	S3	S2
S5	S6	S1

Total events Total events % Efficiency % Events # in %		
Ricezione buona del martello 2^ linea		

Total Zone Chart analysis

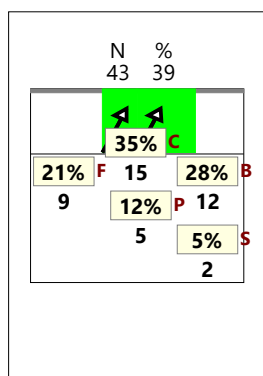
S4	S3	S2
S5	S6	S1

Total events Total events % Efficiency % Events # in %		
Ricezione buona del centrale		

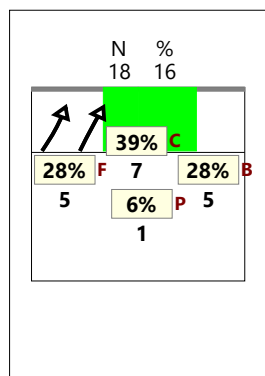
Total events Total events %
 Efficiency % Events # in %

Total Print Composition - 48 - Distribuzione in contrattacco

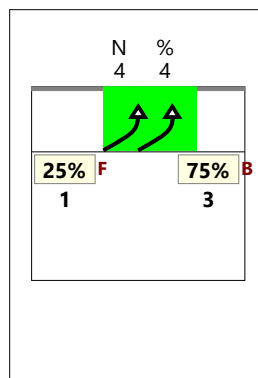
Chiamata 1 (K1 + KH)



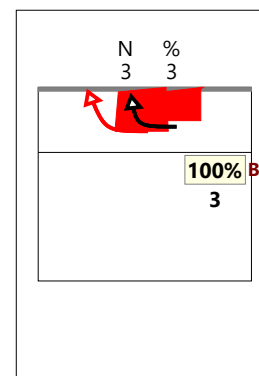
Chiamata 7 (K7 + KX)



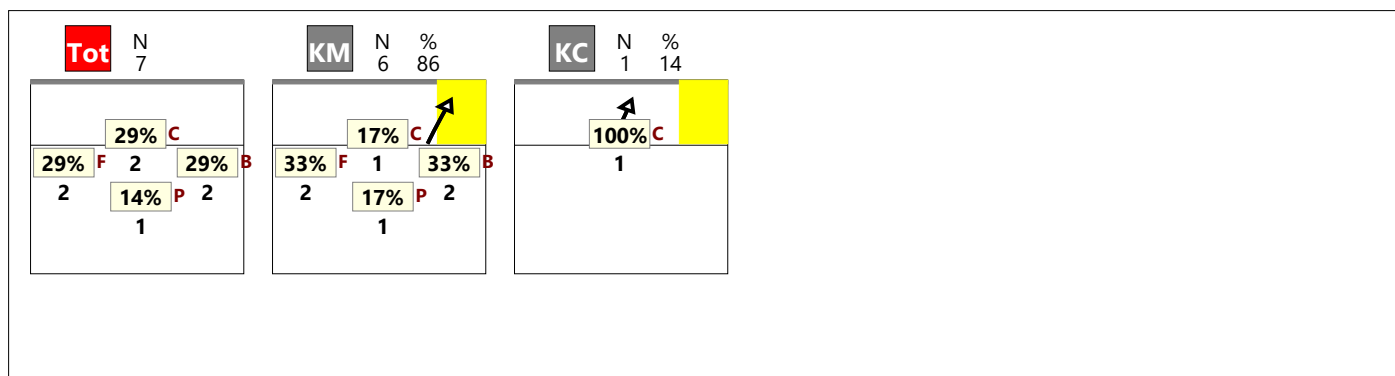
Chiamata 2 (K2 + KW)



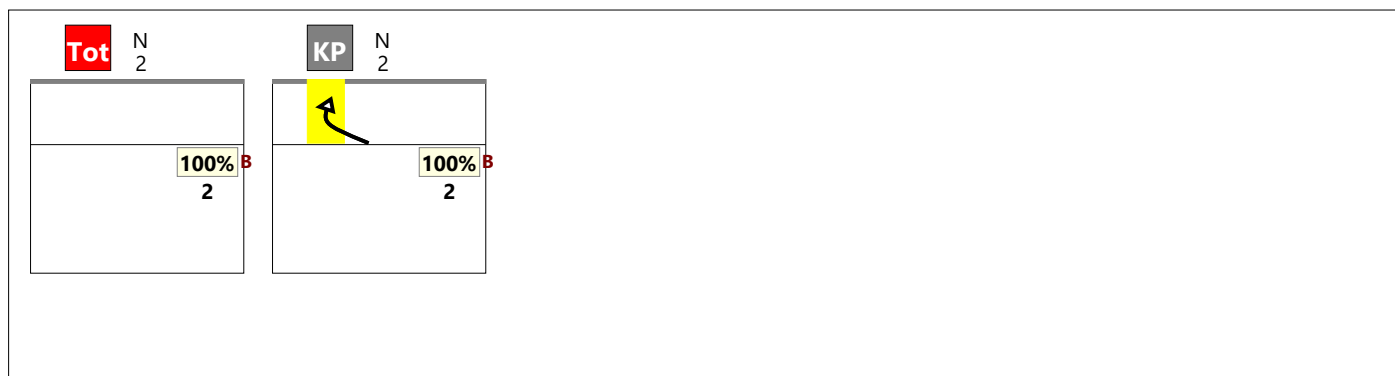
Chiamata CC (KD + KJ)



Verso 2



Verso 4



Staccata

