

Formazioni iniziali e rotazioni di partenza

Formazioni iniziali

Giocatore	Set gi	Titolar	Alzat	1° ma	2° ce	Oppo	2° ma	1° ce	Batt. M	Batt. Q	Rice	Att
Estonia 2016	13	48	8	8	8	8	8	8	153	127	232	342
10 LOSNIKOV	4	0	0	23	0
14 RIKBERG	12	0	0	45	0
3 PUPART	12	8	8	.	53	0	70	68
8 ALLIK	3	2	.	2	0	9	25	17
9 TÄHT	11	6	.	6	0	46	63	79
7 TEPPAN	7	6	.	.	.	6	.	.	0	17	0	54
11 VENNO	6	2	.	.	.	2	.	.	0	23	0	62
1 TREIAL	6	2	.	.	2	.	.	.	17	0	1	9
4 KREEK	9	8	.	.	6	.	.	2	0	30	2	18
17 TAMMEMAA	3	0	2	1	3
19 AGANITS	10	6	6	34	0	0	28
5 TOOBAL	9	5	5	32	0	2	2
13 TOOBAL	4	3	3	17	0	0	2

Rotazioni di partenza

Totale	Tutti i set	1. set	2. set	3. set	4. set	5. set
	3 7 2	1 2 .	1 1 1	. 2 .	1 1 1	. 1 .
	1	1
In battuta	Tutti i set	1. set	2. set	3. set	4. set	5. set
	3 2 2	1 1 .	1 . 1	. 1 .	1 . 1	. . .
	1	1
In ricezione	Tutti i set	1. set	2. set	3. set	4. set	5. set
	. 5 .	. 1 .	. 1 .	. 1 .	. 1 .	. 1 .

Total Worksheet - 07 - Battuta

(3) BEL16, BEL16, BEL16

		BATTUTA TOTALE													
Nome	Totale	Ind.	(#)%	(/)%	(+)%	Pos%	Ace	Ace/	(!)%	(-)%	(=)%	(=)	Err./S	Err./A	
n.\$	Estonia 2016	280	34	5%	6%	14%	25%	14	1.1	17%	43%	16%	45	3.5	3.2
n.3	3 PUPART	53	36.0	4%	2%	25%	31%	2	0.2	15%	49%	6%	3	0.3	1.5
n.9	9 TÄHT	46	33.0	13%	2%	9%	24%	6	0.5	9%	41%	26%	12	1.1	2.0
n.7	7 TEPPAN	17	32.0	.	12%	6%	18%	.	0.0	29%	29%	24%	4	0.6	---
n.11	11 VENNO	23	35.0	4%	9%	26%	39%	1	0.2	13%	22%	26%	6	1.0	6.0
n.4	4 KREEK	30	38.0	3%	17%	7%	27%	1	0.1	23%	30%	20%	6	0.7	6.0
n.17	17 TAMMEMAA	2	25.0	.	.	50%	50%	.	0.0	.	.	50%	1	0.3	---
n.19	19 AGANITS	34	28.0	.	.	6%	6%	.	0.0	26%	56%	12%	4	0.4	---
n.20	20 SOO	.	0.0	---	---	---	---	.	---	---	---	---	.	---	---
n.5	5 TOOBAL	32	38.0	9%	.	16%	25%	3	0.3	22%	47%	6%	2	0.2	0.7
n.13	13 TOOBAL	17	38.0	.	12%	18%	30%	.	0.0	6%	65%	.	.	0.7	---
n.8	8 ALLIK	9	29.0	.	11%	11%	22%	.	0.0	.	56%	22%	2	0.7	---
n.1	1 TREIAL	17	32.0	6%	12%	.	18%	1	---	18%	35%	29%	5	---	5.0

		BATTUTA JUMP													
Nome	Totale	Ind.	(#)%	(/)%	(+)%	Pos%	Ace	Ace/	(!)%	(-)%	(=)%	Err.	Err./S	Err./A	
n.\$	Estonia 2016	127	34	0	9%	12%	21%	8	0.6	15%	34%	24%	31	2.4	3.9
n.3	3 PUPART	.	.	---	---	---	---	.	0.0	---	---	---	.	0.0	---
n.9	9 TÄHT	46	33	13%	2%	9%	24%	6	0.5	9%	41%	26%	12	1.1	2.0
n.7	7 TEPPAN	17	32	.	12%	6%	18%	.	0.0	29%	29%	24%	4	0.6	---
n.11	11 VENNO	23	35	4%	9%	26%	39%	1	0.2	13%	22%	26%	6	1.0	6.0
n.4	4 KREEK	30	38	3%	17%	7%	27%	1	---	23%	30%	20%	6	---	6.0
n.17	17 TAMMEMAA	2	25	.	.	50%	50%	.	---	.	.	50%	1	---	---
n.19	19 AGANITS	.	.	---	---	---	---	.	0.0	---	---	---	.	0.0	---
n.20	20 SOO	.	.	---	---	---	---	.	---	---	---	---	.	---	---
n.5	5 TOOBAL	.	.	---	---	---	---	.	0.0	---	---	---	.	0.0	---
n.13	13 TOOBAL	.	.	---	---	---	---	.	0.0	---	---	---	.	0.0	---
n.8	8 ALLIK	9	29	.	11%	11%	22%	.	0.0	.	56%	22%	2	0.7	---
n.1	1 TREIAL	.	.	---	---	---	---	.	---	---	---	---	.	---	---

		BATTUTA FLOAT													
Nome	Totale	Ind.	(#)%	(/)%	(+)%	Pos%	Ace	Ace/	(!)%	(-)%	(=)%	Err.	Err./S	Err./A	
n.\$	Estonia 2016	153	34	0	3%	15%	18%	6	0.5	18%	50%	9%	14	1.1	2.3
n.3	3 PUPART	53	36	4%	2%	25%	31%	2	0.0	15%	49%	6%	3	0.0	1.5
n.9	9 TÄHT	.	.	---	---	---	---	.	0.5	---	---	---	.	1.1	---
n.7	7 TEPPAN	.	.	---	---	---	---	.	0.0	---	---	---	.	0.6	---

Total Worksheet - 07 - Battuta

n.11	11 VENNO	.	.	---	---	---	---	.	0.2	---	---	---	.	1.0	---
n.4	4 KREEK	.	.	---	---	---	---	.	---	---	---	---	.	---	---
n.17	17 TAMMEMAA	.	.	---	---	---	---	.	---	---	---	---	.	---	---
n.19	19 AGANITS	34	28	.	.	6%	6%	.	---	26%	56%	12%	4	---	---
n.20	20 SOO	.	.	---	---	---	---	.	---	---	---	---	.	---	---
n.5	5 TOOBAL	32	38	9%	.	16%	25%	3	0.0	22%	47%	6%	2	0.0	0.7
n.13	13 TOOBAL	17	38	.	12%	18%	30%	.	0.0	6%	65%	.	.	0.0	---
n.8	8 ALLIK	.	.	---	---	---	---	.	0.0	---	---	---	.	0.7	---
n.1	1 TREIAL	17	32	6%	12%	.	18%	1	---	18%	35%	29%	5	---	5.0

Total Worksheet - 02 - Ricezione

(3) BEL16, BEL16, BEL16

Nome	RICEZIONE TOTALE									RICEZIONE JUMP						RICEZIONE FLOAT									
	Totale	Ind.	Pos%	(!)%	(/)%	(=)%	Err.	Err.%	Err./Set	Totale	Ind.	Pos%	(!)%	(/)%	(=)%	Err.%	Err./Set	Totale	Ind.	Pos%	(!)%	(/)%	(=)%	Err.%	Err./Set
n.\$ Estonia 2016	226	60	44%	28%	6%	5%	25	11%	1.9	82	60	45%	27%	6%	6%	12%	0.8	144	60	43%	29%	6%	5%	11%	1.2
n.10 10 LOSNIKOV	23	52	30%	22%	17%	4%	5	21%	0.4	7	48	43%	.	14%	14%	28%	0.2	16	54	25%	31%	19%	.	19%	0.2
n.14 14 RIKBERG	45	62	55%	24%	4%	9%	6	13%	0.5	24	61	59%	25%	8%	8%	16%	0.3	21	62	53%	24%	.	10%	10%	0.2
n.18 18 TAMME	.	.	----	----	(----)	(----)	.	----	0.0	.	.	----	----	(----)	(----)	----	0.0	.	.	----	----	(----)	(----)	----	0.0
n.3 3 PUPART	70	63	49%	24%	1%	3%	3	4%	0.2	26	67	46%	38%	.	.	.	0.0	44	61	50%	16%	2%	5%	7%	0.2
n.9 9 TÄHT	63	60	39%	40%	6%	6%	8	12%	0.6	17	56	36%	29%	12%	6%	18%	0.2	46	62	41%	43%	4%	7%	11%	0.4
n.8 8 ALLIK	25	56	32%	24%	8%	4%	3	12%	0.2	8	51	25%	12%	.	12%	12%	0.1	17	58	36%	29%	12%	.	12%	0.2
n.0 0???	.	.	----	----	((----))	((----))	.	----	0.0	.	.	----	----	((----))	((----))	----	0.0	.	.	----	----	((----))	((----))	----	0.0
n.0 0???	.	.	----	----	----	----	.	----	0.0	.	.	----	----	----	----	----	0.0	.	.	----	----	----	----	----	0.0

Nome	RICEZIONE JUMP									RICEZIONE FLOAT																				
	Sx			Cx			Dx			Alto			Basso			Sx			Cx			Dx			Alto			Basso		
	Totale	Pos%	Err.%	Totale	Pos%	Err.%	Totale	Pos%	Err.%	Totale	Pos%	Err.%	Totale	Pos%	Err.%	Totale	Pos%	Err.%	Totale	Pos%	Err.%	Totale	Pos%	Err.%	Totale	Pos%	Err.%	Totale	Pos%	Err.%
n.10 10 LOSNIKOV	2	50%	50%	2	50%	.	2	50%	.	.	----	----	.	----	----	.	----	----	11	27%	9%	1	.	.	4	25%	50%	.	----	----
n.14 14 RIKBERG	4	25%	50%	14	65%	.	4	75%	25%	.	----	----	2	50%	50%	5	80%	.	8	50%	12%	4	50%	25%	2	.	.	2	50%	.
n.18 18 TAMME	.	----	----	.	----	----	.	----	----	.	----	----	.	----	----	.	----	----	.	----	----	.	----	----	.	----	----	.	----	----
n.3 3 PUPART	3	33%	.	11	63%	.	11	36%	.	.	----	----	1	.	.	4	50%	25%	19	42%	.	9	67%	.	11	54%	9%	.	----	----
n.9 9 TÄHT	4	25%	25%	10	50%	.	1	.	100%	.	----	----	1	.	.	4	25%	25%	14	14%	21%	.	----	----	28	57%	4%	.	----	----
n.8 8 ALLIK	3	33%	33%	3	33%	.	1	.	.	.	----	----	1	.	.	1	.	.	6	34%	33%	2	.	.	7	43%	.	1	100%	.
n.00 0???	.	----	----	.	----	----	.	----	----	.	----	----	.	----	----	.	----	----	.	----	----	.	----	----	.	----	----	.	----	----

Total Worksheet - 03 - Attacco prima palla

(3) BEL16, BEL16, BEL16

ATTACCO PRIMA PALLA																																									
Nome		Tot.	Tot.%	Eff.%	(+)	(+)%	(#)	(#)%	(#)/S	pos.%	(/)	(/)%	(=)	(=)%	Err.%	Err./S	Quick					Alta					Pipe/Schema					Primo tempo									
																		Tot.	#	+	/	=	Tot.	#	+	/	=	Tot.	#	+	/	=	Tot.	#	+	/	=				
Quick		122	62%	31%	5	4%	61	50%	4.7	54%	14	11%	9	7%	19%	1.8																									
Alta		26	13%	15%	1	4%	8	31%	0.6	35%	2	8%	2	8%	15%	0.3																									
Pipe/Schema		13	7%	62%	1	8%	9	69%	0.7	77%	0	0%	1	8%	8%	0.1																									
Primo tempo		35	18%	60%	0	0%	23	66%	1.8	66%	0	0%	2	6%	6%	0.2																									
Totale		197	X	37%	7	4%	102	52%	7.8	---	16	8%	14	7%	15%	2.3																									
n.3	3 PUPART	44	22%	34%	3	7%	20	45%	1.7	52%	2	5%	3	7%	12%	1.0	32	16	2	2	2	5	0	0	0	0	7	4	1	0	1	0	0	0	0	0	0	0			
n.9	9 TÄHT	39	20%	36%	1	3%	22	56%	2.0	59%	6	15%	2	5%	20%	1.8	27	15	1	5	2	7	3	0	1	0	5	4	0	0	0	0	0	0	0	0	0	0	0		
n.7	7 TEPPAN	36	18%	17%	1	3%	15	42%	2.1	45%	4	11%	5	14%	25%	3.6	29	14	0	3	4	7	1	1	1	1	0	0	0	0	0	0	0	0	0	0	0	0	0		
n.1	11 VENNO	30	15%	40%	2	7%	16	53%	2.1	45%	3	10%	1	3%	25%	3.6	26	13	2	3	1	4	3	0	0	0	0	0	0	0	0	0	0	0	0	0	0	0	0		
n.4	4 KREEK	13	7%	69%	0	0%	9	69%	1.0	69%	0	0%	0	0%	0%	0.0	0	0	0	0	0	0	0	0	0	0	0	0	0	0	0	0	0	0	0	0	13	9	0	0	0
n.1	17 TAMMEMAA	3	2%	33%	0	0%	1	33%	0.3	33%	0	0%	0	0%	0%	0.0	0	0	0	0	0	0	0	0	0	0	0	0	0	0	0	0	0	0	3	1	0	0	0	0	
n.1	19 AGANITS	19	10%	58%	0	0%	13	68%	1.3	68%	0	0%	2	11%	11%	1.1	0	0	0	0	0	0	0	0	0	0	0	0	0	0	0	0	0	0	0	19	13	0	0	0	2
n.2	20 SOO	0	0%	0%	0	(---)	0	(---)	---	---	0	(---)	0	(---)	(---)	---	0	0	0	0	0	0	0	0	0	0	0	0	0	0	0	0	0	0	0	0	0	0	0	0	
n.5	5 TOOBAL	1	1%	100%	0	0%	1	100%	0.1	100%	0	0%	0	0%	0%	0.0	0	0	0	0	0	0	0	0	0	0	0	0	0	0	0	0	0	0	0	0	0	0	0	0	
n.1	13 TOOBAL	0	0%	0%	0	(---)	0	(---)	0.0	---	0	(---)	0	(---)	(---)	---	0	0	0	0	0	0	0	0	0	0	0	0	0	0	0	0	0	0	0	0	0	0	0	0	
n.8	8 ALLIK	12	6%	25%	0	0%	5	42%	1.7	42%	1	8%	1	8%	16%	5.3	8	3	0	1	0	3	1	0	0	1	1	1	0	0	0	0	0	0	0	0	0	0	0		
n.1	1 TREIAL	8	4%	38%	0	0%	5	62%	1.7	42%	1	12%	1	12%	16%	5.3	1	0	0	0	1	0	0	0	0	0	0	0	0	0	0	0	0	7	5	0	1	0			

ATTACCO PRIMA PALLA																																				
Nome		Tot.	Tot.%	Ricezione (#) e (+)					Ricezione (#)					Ricezione (+)					Ricezione (!)					Ricezione (-)												
				(#)	(#)%	(/)%	(=)%	Err.%	Tot.	Tot.%	(#)	(#)%	(/)%	(=)%	Err.%	Tot.	Tot.%	(#)	(#)%	(/)%	(=)%	Err.%	Tot.	Tot.%	(#)	(#)%	(/)%	(=)%	Err.%	Tot.	Tot.%	(#)	(#)%	(/)%	(=)%	Err.%
Estonia 2016		102	100%	62	61%	9%	8%	17%	41	100%	30	73%	7%	7%	14%	61	100%	---	52%	10%	8%	18%	65	100%	32	49%	8%	5%	13%	38	100%	13	34%	8%	11%	19%
Opposti																																				
n.7	7 TEPPAN	14	14%	5	36%	0%	29%	29%	5	12%	3	60%	0%	40%	40%	9	15%	---	22%	0%	22%	22%	11	17%	7	64%	18%	0%	18%	11	29%	3	27%	18%	9%	27%
n.1	11 VENNO	13	13%	8	62%	8%	0%	8%	6	15%	4	67%	17%	0%	17%	7	11%	---	57%	0%	0%	0%	11	17%	6	55%	18%	0%	18%	6	16%	2	33%	0%	17%	17%
Martelli																																				
n.3	3 PUPART	17	17%	10	59%	12%	6%	18%	4	10%	2	50%	25%	25%	50%	13	21%	---	62%	8%	0%	8%	19	29%	8	42%	0%	11%	11%	8	21%	2	25%	0%	0%	0%
n.9	9 TÄHT	19	19%	12	63%	21%	11%	32%	7	17%	5	71%	14%	0%	14%	12	20%	---	58%	25%	17%	42%	12	18%	6	50%	8%	0%	8%	8	21%	4	50%	12%	0%	12%
n.8	8 ALLIK	4	4%	1	25%	25%	0%	25%	3	7%	1	33%	0%	0%	0%	1	2%	---	0%	100%	0%	100%	4	6%	2	50%	0%	0%	0%	4	11%	2	50%	0%	25%	25%
Centrali																																				
n.4	4 KREEK	10	10%	8	80%	0%	0%	0%	5	12%	5	100%	0%	0%	0%	5	8%	---	60%	0%	0%	0%	3	5%	1	33%	0%	0%	0%	0	0%	0	---	---	---	---
n.1	17 TAMMEMAA	3	3%	1	33%	0%	0%	0%	1	2%	1	100%	0%	0%	0%	2	3%	---	0%	0%	0%	0%	0	0%	0	---	---	---	---	0	0%	0	---	---	---	---
n.1	19 AGANITS	15	15%	12	80%	0%	7%	7%	9	22%	8	89%	0%	0%	0%	6	10%	---	67%	0%	17%	17%	3	5%	1	33%	0%	0%	0%	1	3%	0	0%	0%	100%	100%
n.2	20 SOO	0	0%	0	---	---	---	---	0	0%	0	---	---	---	---	0	0%	---	---	---	---	---	0	0%	0	---	---	---	---	0	0%	0	---	---	---	---

Total Worksheet - 03 - Attacco prima palla

Alzatori		Ricezione (#) e (+)							Ricezione (#)				Ricezione (+)				Ricezione (!)				Ricezione (-)															
n.5	5 TOOBAL	1	1%	1	100%	0%	0%	0%	0	0%	0	---	---	---	---	1	1%	---	100%	0%	0%	0%	0	0%	0	---	---	---	---	0	0%	0	---	---	---	---
n.1	13 TOOBAL	0	0%	0	---	---	---	---	0	0%	0	---	---	---	---	0	0%	---	---	---	---	---	0	0%	0	---	---	---	---	0	0%	0	---	---	---	---

Total Worksheet - 04 - Tipo di attacco

(3) BEL16, BEL16, BEL16

		UNO classica					C					DOPPIA C					SETTE classica					DUE															
Nome	Tot.	(#)	(#)%	(/)%	(=)%	Eff.	Tot.	(#)	(#)%	(/)%	(=)%	Eff.	Tot.	(#)	(#)%	(/)%	(=)%	Eff.	Tot.	(#)	(#)%	(/)%	(=)%	Eff.	Tot.	(#)	(#)%	(/)%	(=)%	Eff.							
n.\$	Estonia 2016	15	11	73%	0%	13%	60%	1	1	100	0%	0%	100	1	0	0%	0%	0%	0%	7	4	57%	0%	0%	57%						0	0	---	---	---	---	
n.04	4 KREEK	7	6	86%	0%	0%	86%	1	1	100	0%	0%	100	0	0	---	---	---	---	0	0	0	---	---	---						0	0	---	---	---	---	
n.17	17 TAMMEMAA	1	1	100	0%	0%	100	0	0	---	---	---	---	1	0	0%	0%	0%	0%	0	0	0	---	---	---						0	0	---	---	---	---	
n.19	19 AGANITS	7	4	57%	0%	29%	100	0	0	---	---	---	---	0	0	---	---	---	0%	7	4	---	0%	0%	---						0	0	---	---	---	---	
n.20	20 SOO	0	0	---	---	---	---	0	0	---	---	---	---	0	0	---	---	---	---	0	0	0	---	---	---						0	0	---	---	---	---	
		UNO centro rete										SETTE centro rete					DUE centro rete																				
Nome	Tot.	(#)	(#)%	(/)%	(=)%	Eff.	Tot.	(#)	(#)%	(/)%	(=)%	Eff.	Tot.	(#)	(#)%	(/)%	(=)%	Eff.	Tot.	(#)	(#)%	(/)%	(=)%	Eff.	Tot.	(#)	(#)%	(/)%	(=)%	Eff.							
n.\$	Estonia 2016	9	6	67%	0%	11%	56%													4	4	100	0%	0%	100						0	0	---	---	---	---	
n.4	4 KREEK	5	3	60%	0%	0%	60%													0	0	0	---	---	---						0	0	---	---	---	---	
n.17	17 TAMMEMAA	0	0	---	---	---	---													0	0	0	---	---	---						0	0	---	---	---	---	
n.19	19 AGANITS	4	3	75%	0%	25%	50%													4	4	100	0%	0%	100						0	0	---	---	---	---	
n.20	20 SOO	0	0	---	---	---	---													0	0	0	---	---	---						0	0	---	---	---	---	
		VICINO verso 4					LONTANO verso 4					DUE verso 4					VICINO verso 2					LONTANO verso 2					DUE verso 2										
Nome	Tot.	(#)	(#)%	(/)%	(=)%	Eff.	Tot.	(#)	(#)%	(/)%	(=)%	Eff.	Tot.	(#)	(#)%	(/)%	(=)%	Eff.	Tot.	(#)	(#)%	(/)%	(=)%	Eff.	Tot.	(#)	(#)%	(/)%	(=)%	Eff.							
n.\$	Estonia 2016	3	1	33%	0%	0%	33%	0	0	---	---	---	---	0	0	---	---	---	---	2	0	0%	0%	0%	0%	1	0	0%	0%	0%	0%	0	0	---	---	---	---
n.4	4 KREEK	1	1	100	0%	0%	100	0	0	---	---	---	---	0	0	---	---	---	---	1	0	0%	0%	0%	0%	1	0	0%	0%	0%	0%	0	0	---	---	---	---
n.17	17 TAMMEMAA	1	0	0%	0%	0%	0%	0	0	---	---	---	---	0	0	---	---	---	---	0	0	0	---	---	---	0	0	---	---	---	---	0	0	---	---	---	---
n.19	19 AGANITS	1	0	0%	0%	0%	0%	0	0	---	---	---	---	0	0	---	---	---	---	1	0	0%	0%	0%	0%	0	0	---	---	---	---	0	0	---	---	---	---
n.20	20 SOO	0	0	---	---	---	---	0	0	---	---	---	---	0	0	---	---	---	---	0	0	0	---	---	---	0	0	---	---	---	---	0	0	---	---	---	---
		QUICK da 4					QUICK da 2					QUICK da 1					PIPE/SCHEMI					PALLA ALTA															
Nome	Tot.	(#)	(#)%	(/)%	(=)%	Eff.	Tot.	(#)	(#)%	(/)%	(=)%	Eff.	Tot.	(#)	(#)%	(/)%	(=)%	Eff.	Tot.	(#)	(#)%	(/)%	(=)%	Eff.	Tot.	(#)	(#)%	(/)%	(=)%	Eff.							
n.\$	Estonia 2016	102	44	43%	11%	10%	22%	31	16	52%	10%	10%	32%	46	27	59%	15%	4%	40%	24	13	54%	0%	8%	46%	57	15	26%	7%	9%	10%						
n.3	3 PUPART	47	19	40%	9%	6%	25%	0	0	---	---	---	---	0	0	---	---	---	---	9	4	44%	0%	11%	33%	10	0	0%	0%	0%	0%						
n.9	9 TÄHT	41	20	49%	15%	7%	27%	6	4	67%	33%	0%	34%	0	0	---	---	---	---	15	9	60%	0%	7%	53%	16	6	38%	6%	12%	20%						
n.7	7 TEPPAN	8	3	38%	0%	38%	0%	10	4	40%	10%	20%	10%	21	10	48%	24%	5%	19%	0	0	---	---	---	---	15	2	13%	7%	20%	-14%						
n.11	11 VENNO	6	2	33%	17%	17%	-1%	15	8	53%	0%	7%	46%	25	17	68%	8%	4%	56%	0	0	---	---	---	---	16	7	44%	12%	0%	32%						
n.0	0???	0	0	---	---	---	---	0	0	---	---	---	---	0	0	---	---	---	---	0	0	---	---	---	---	0	0	---	---	---	---	0	0	---	---	---	---
n.0	0???	0	0	---	---	---	---	0	0	---	---	---	---	0	0	---	---	---	---	0	0	---	---	---	---	0	0	---	---	---	---	0	0	---	---	---	---
n.10	10???	0	0	---	---	---	---	0	0	---	---	---	---	0	0	---	---	---	---	0	0	---	---	---	---	0	0	---	---	---	---	0	0	---	---	---	---

Total Worksheet - 06 - Utilizzo attaccanti in CP per punteggio

n.19	19 AGANITS	0	---	---	---	---	0	---	---	---	---	0	---	---	---	---	0	---	---	---	---	0	---	---	---	---	0	---	---	---	---
n.20	20 SOO	0	---	---	---	---	0	---	---	---	---	0	---	---	---	---	0	---	---	---	---	0	---	---	---	---	0	---	---	---	---
n.5	5 TOOBAL	0	---	---	---	---	0	---	---	---	---	0	---	---	---	---	0	---	---	---	---	0	---	---	---	---	0	---	---	---	---
n.13	13 TOOBAL	0	---	---	---	---	0	---	---	---	---	0	---	---	---	---	0	---	---	---	---	0	---	---	---	---	0	---	---	---	---
n.8	8 ALLIK	0	---	---	---	---	0	---	---	---	---	0	---	---	---	---	0	---	---	---	---	0	---	---	---	---	0	---	---	---	---

RICEZIONE -

Nome	Att.	Distr.	Diff.	Di	(#)%	Err.%	Att.	Distr.	Diff.	Di	(#)%	Err.%	Att.	Distr.	Diff.	Di	(#)%	Err.%	Att.	Distr.	Diff.	Di	(#)%	Err.%	Att.	Distr.	Diff.	Di	(#)%	Err.%
Estonia 2016	0	---	---	---	---	---	0	---	---	---	---	---	0	---	---	---	---	---	0	---	---	---	---	---	0	---	---	---	---	---
n.03	3 PUPART	0	---	---	---	---	0	---	---	---	---	---	0	0%	-21%	---	---	---	0	---	---	---	---	---	0	---	---	---	---	---
n.9	9 TÄHT	0	---	---	---	---	0	---	---	---	---	---	0	---	---	---	---	---	0	---	---	---	---	---	0	---	---	---	---	---
n.7	7 TEPPAN	0	---	---	---	---	0	---	---	---	---	---	0	---	---	---	---	---	0	---	---	---	---	---	0	---	---	---	---	---
n.11	11 VENNO	0	---	---	---	---	0	---	---	---	---	---	0	---	---	---	---	---	0	---	---	---	---	---	0	---	---	---	---	---
n.4	4 KREEK	0	---	---	---	---	0	---	---	---	---	---	0	---	---	---	---	---	0	---	---	---	---	---	0	---	---	---	---	---
n.17	17 TAMMEMAA	0	---	---	---	---	0	---	---	---	---	---	0	---	---	---	---	---	0	---	---	---	---	---	0	---	---	---	---	---
n.19	19 AGANITS	0	---	---	---	---	0	---	---	---	---	---	0	---	---	---	---	---	0	---	---	---	---	---	0	---	---	---	---	---
n.20	20 SOO	0	---	---	---	---	0	---	---	---	---	---	0	---	---	---	---	---	0	---	---	---	---	---	0	---	---	---	---	---
n.5	5 TOOBAL	0	---	---	---	---	0	---	---	---	---	---	0	---	---	---	---	---	0	---	---	---	---	---	0	---	---	---	---	---
n.13	13 TOOBAL	0	---	---	---	---	0	---	---	---	---	---	0	---	---	---	---	---	0	---	---	---	---	---	0	---	---	---	---	---
n.8	8 ALLIK	0	---	---	---	---	0	---	---	---	---	---	0	---	---	---	---	---	0	---	---	---	---	---	0	---	---	---	---	---

Total Worksheet - 08 - Muro per tipo di attacco e base

(3) BEL16, BEL16, BEL16

MURO per tipo di attacco							
Tipo di attacco	Att.	Muri	(#)	(+)	(!)	(-)	(=)
Alta	90	46	17%	9%	8%	1%	16%
Pipe/Schema	34	14	6%	3%	0%	0%	29%
Primo tempo	66	30	9%	2%	8%	2%	26%
Quick	129	62	12%	5%	4%	2%	24%
Altro	13	6	8%	8%	23%	0%	8%
Totale	332	159	12%	5%	6%	2%	22%

Base	Tutte le uscite							FRONT							CENTER							BACK												
	Att.	Muri	(#)	(+)	(!)	(-)	(=)	Att.	Muri	(#)	(+)	(!)	(-)	(=)	Att.	Muri	(#)	(+)	(!)	(-)	(=)	Att.	Muri	(#)	(+)	(!)	(-)	(=)						
K1 KH	70	38	13%	1%	7%	1%	31%	14	12	14%	0%	7%	7%	57%	29	14	10%	0%	7%	0%	31%	19	10	16%	5%	11%	0%	21%	8	2	12%	0%	0%	0%
K2 KW	16	9	12%	19%	0%	0%	25%	3	2	33%	0%	0%	0%	33%	3	2	0%	0%	0%	67%	8	5	12%	38%	0%	0%	12%	2	0	0%	0%	0%		
K7 KX	28	13	18%	7%	4%	0%	18%	10	4	20%	0%	0%	0%	20%	3	1	0%	33%	0%	0%	0%	12	7	17%	8%	8%	0%	25%	3	1	33%	0%	0%	0%
Tot.	114	60	14%	5%	5%	1%	27%	27	18	19%	0%	4%	4%	41%	35	17	9%	3%	6%	0%	31%	39	22	15%	13%	8%	0%	21%	13	3	15%	0%	0%	0%

DETTAGLIO MURO su palla QUICK							
	Att.	Muri	(#)	(+)	(!)	(-)	(=)
---- X5	60	34	13%	2%	5%	3%	33%
---- X6	45	24	13%	13%	2%	2%	22%
---- X8	24	4	4%	0%	4%	0%	4%
Totale	129	62	12%	5%	4%	2%	24%

Base	Tutte le uscite							FRONT							CENTER							BACK											
	Att.	Muri	(#)	(+)	(!)	(-)	(=)	Att.	Muri	(#)	(+)	(!)	(-)	(=)	Att.	Muri	(#)	(+)	(!)	(-)	(=)	Att.	Muri	(#)	(+)	(!)	(-)	(=)					
KM	14	8	7%	7%	0%	0%	43%	6	3	17%	0%	0%	0%	33%	2	1	0%	0%	0%	50%	6	4	0%	17%	0%	0%	50%	0	0	----	----	----	----
KC	6	3	0%	0%	17%	0%	33%	4	3	0%	0%	25%	0%	50%	1	0	0%	0%	0%	0%	0%	1	0	0%	0%	0%	0%	0	0	----	----	----	----
KA	1	1	0%	0%	0%	0%	100	0	0	----	----	----	----	----	1	1	0%	0%	0%	100	0	0	----	----	----	----	----	0	0	----	----	----	----
Tot.	21	12	5%	5%	5%	0%	43%	10	6	10%	0%	10%	0%	40%	4	2	0%	0%	0%	50%	7	4	0%	14%	0%	0%	43%	0	0	----	----	----	----

MURO per qualif della ricezione							
Ricezione	Att.	Muri	(#)	(+)	(!)	(-)	(=)
Rice #	58	32	16%	5%	2%	3%	29%
Rice +	61	32	10%	3%	7%	0%	33%
Rice !	47	23	13%	6%	6%	0%	23%
Rice -	38	23	21%	16%	8%	0%	16%
Totale	205	111	14%	7%	5%	1%	26%

Base	Tutte le uscite							FRONT							CENTER							BACK											
	Att.	Muri	(#)	(+)	(!)	(-)	(=)	Att.	Muri	(#)	(+)	(!)	(-)	(=)	Att.	Muri	(#)	(+)	(!)	(-)	(=)	Att.	Muri	(#)	(+)	(!)	(-)	(=)					
KP	6	4	0%	0%	0%	0%	67%	3	2	0%	0%	0%	0%	67%	0	0	----	----	----	----	1	0	0%	0%	0%	0%	0%	2	2	0%	0%	0%	0%
KS	6	2	17%	0%	0%	17%	0%	1	0	0%	0%	0%	0%	2	2	50%	0%	0%	50%	0%	2	0	0%	0%	0%	0%	1	0	0%	0%	0%	0%	
KQ	7	3	14%	0%	14%	0%	14%	1	1	100	0%	0%	0%	0%	4	2	0%	0%	25%	0%	1	0	0%	0%	0%	0%	1	0	0%	0%	0%	0%	
Tot.	14	6	21%	0%	7%	7%	7%	2	1	50%	0%	0%	0%	0%	7	5	29%	0%	14%	14%	14%	3	0	0%	0%	0%	0%	2	0	0%	0%	0%	0%

DETTAGLIO MURO su ricezione -							
Ricezione	Att.	Muri	(#)	(+)	(!)	(-)	(=)
---- Rice - (no alta)	8	3	25%	0%	0%	0%	12%
---- Rice - alta)	30	20	20%	20%	10%	0%	17%
Totale	38	23	21%	16%	8%	0%	16%

Total Worksheet - 09 - Attacco totale e Contrattacco

(3) BEL16, BEL16, BEL16

ATTACCO TOTALE																																					
Nome	Tot.	Tot.%	Eff.%	(+)	(+)%	(#)	(#)%	(#)/S	pos.%	(/)	(/)%	(=)	(=)%	Err.%	Err./S	Quick					Alta					Pipe/Schema					Primo tempo						
																Tot.	#	+	/	=	Tot.	#	+	/	=	Tot.	#	+	/	=	Tot.	#	+	/	=		
Quick	180	55%	28%	10	6%	87	48%	6.7	54%	21	12%	16	9%	21%	2.8																						
Alta	58	18%	10%	2	3%	15	26%	1.2	29%	4	7%	5	9%	16%	0.7																						
Pipe/Schema	24	7%	46%	1	4%	13	54%	1.0	58%	0	0%	2	8%	8%	0.2																						
Primo tempo	52	16%	54%	2	4%	32	62%	2.5	65%	1	2%	3	6%	8%	0.3																						
Totale	325	X	31%	17	5%	153	47%	11.8	---	26	8%	27	8%	16%	4.1																						
n.3 3 PUPART	68	21%	24%	6	9%	24	35%	2.0	44%	4	6%	4	6%	12%	1.0	47	19	4	4	3	10	0	0	0	0	9	4	1	0	1	0	0	0	0	0		
n.9 9 TÄHT	79	24%	32%	1	1%	40	51%	3.6	52%	9	11%	6	8%	19%	1.7	47	24	1	8	3	16	6	0	1	2	15	9	0	0	1	0	0	0	0	0		
n.7 7 TEPPAN	54	17%	6%	2	4%	19	35%	2.7	39%	7	13%	9	17%	30%	4.3	39	17	1	6	6	15	2	1	1	3	0	0	0	0	0	0	0	0	0	0		
n.1 11 VENNO	62	19%	42%	5	8%	34	55%	5.7	63%	5	8%	3	5%	13%	2.2	46	27	4	3	3	16	7	1	2	0	0	0	0	0	0	0	0	0	0	0		
n.4 4 KREEK	18	6%	56%	2	11%	11	61%	1.2	72%	0	0%	1	6%	6%	0.7	0	0	0	0	0	0	0	0	0	0	0	0	0	0	0	0	0	17	11	2	0	0
n.1 17 TAMMEMAA	3	1%	33%	0	0%	1	33%	0.3	33%	0	0%	0	0%	0%	0.0	0	0	0	0	0	0	0	0	0	0	0	0	0	0	0	0	3	1	0	0	0	
n.1 19 AGANITS	28	9%	50%	1	4%	17	61%	1.7	65%	0	0%	3	11%	11%	1.1	0	0	0	0	0	0	0	0	0	0	0	0	0	0	0	0	25	15	0	0	3	
n.2 20 SOO	0	0%	0%	0	((---	0	((---	---	---	0	((---	0	((---	((---	---	0	0	0	0	0	0	0	0	0	0	0	0	0	0	0	0	0	0	0	0	0	0
n.5 5 TOOBAL	2	1%	50%	0	0%	1	50%	0.1	50%	0	0%	0	0%	0%	0.0	0	0	0	0	0	0	0	0	0	0	0	0	0	0	0	0	0	0	0	0	0	
n.1 13 TOOBAL	2	1%	0%	0	0%	0	0%	1.0	67%	0	0%	0	0%	22%	3.7	0	0	0	0	0	1	0	0	0	0	0	0	0	0	0	0	0	0	0	0	0	
n.1 1 TRIAL	9	3%	44%	0	0%	6	67%	1.0	67%	1	11%	1	11%	22%	3.7	1	0	0	0	1	0	0	0	0	0	0	0	0	0	0	7	5	0	1	0		

CONTRATTACCO																																				
Nome	Tot.	Tot.%	Eff.%	(+)	(+)%	(#)	(#)%	(#)/S	pos.%	(/)	(/)%	(=)	(=)%	Err.%	Err./S	Quick					Alta					Pipe/Schema					Primo tempo					
																Tot.	#	+	/	=	Tot.	#	+	/	=	Tot.	#	+	/	=	Tot.	#	+	/	=	
Quick	65	49%	23%	5	8%	29	45%	2.2	52%	8	12%	6	9%	22%	1.1																					
Alta	35	27%	6%	1	3%	8	23%	0.6	26%	2	6%	4	11%	17%	0.5																					
Pipe/Schema	12	9%	33%	0	0%	5	42%	0.4	42%	0	0%	1	8%	8%	0.1																					
Primo tempo	10	8%	30%	2	20%	4	40%	0.3	60%	0	0%	1	10%	10%	0.1																					
Totale	132	X	21%	10	8%	51	39%	3.9	---	10	8%	13	10%	17%	1.8																					
n.0 3 PUPART	24	21%	4%	3	12%	4	17%	0.3	29%	2	8%	1	4%	12%	1.0	15	3	2	2	1	5	0	0	0	0	2	0	0	0	0	0	0	0	0	0	
n.9 9 TÄHT	40	19%	28%	0	0%	18	45%	1.6	45%	3	8%	4	10%	18%	1.6	20	9	0	3	1	9	3	0	0	2	10	5	0	0	1	0	0	0	0	0	
n.7 7 TEPPAN	18	8%	-17%	1	6%	4	22%	0.6	28%	3	17%	4	22%	39%	5.6	10	3	1	3	2	8	1	0	0	2	0	0	0	0	0	0	0	0	0	0	
n.1 11 VENNO	32	10%	44%	3	9%	18	56%	3.0	65%	2	6%	2	6%	12%	2.0	20	14	2	0	2	12	4	1	2	0	0	0	0	0	0	0	0	0	0	0	
n.4 4 KREEK	5	5%	20%	2	40%	2	40%	0.2	80%	0	0%	1	20%	20%	2.2	0	0	0	0	0	0	0	0	0	0	0	0	0	0	0	4	2	2	0	0	
n.1 17 TAMMEMAA	0	1%	0%	0	((---	0	((---	0.0	---	0	((---	0	((---	((---	---	0	0	0	0	0	0	0	0	0	0	0	0	0	0	0	0	0	0	0	0	0
n.1 19 AGANITS	9	5%	33%	1	11%	4	44%	0.4	55%	0	0%	1	11%	11%	1.1	0	0	0	0	0	0	0	0	0	0	0	0	0	0	6	2	0	0	1		
n.2 20 SOO	0	0%	0%	0	((---	0	((---	---	---	0	((---	0	((---	((---	---	0	0	0	0	0	0	0	0	0	0	0	0	0	0	0	0	0	0	0	0	0
n.5 5 TOOBAL	1	16%	0%	0	0%	0	0%	0.0	0%	0	0%	0	0%	0%	0.0	0	0	0	0	0	0	0	0	0	0	0	0	0	0	0	0	0	0	0	0	
n.1 13 TOOBAL	2	8%	0%	0	0%	0	0%	0.2	100%	0	0%	0	0%	0%	0.0	0	0	0	0	0	1	0	0	0	0	0	0	0	0	0	0	0	0	0	0	

Total Worksheet - 09 - Attacco totale e Contrattacco

n.1	1	TREIAL		1	5%		100%		0	0%		1	100%		0.2	100%		0	0%		0	0%		0%	0.0		0	0	0	0	0	0		0	0	0	0	0		0	0	0	0	0		0	0	0	0	0	
- 4	1222			0	0%		0%		0	0%		0	100%		0.2	100%		0	0%		0	0%		0%	0.0		0	0	0	0	0	0	0	0		0	0	0	0	0	0		0	0	0	0	0				

Total Print Composition - _P12 - 10 - Distribuzione 1

Total Zone Chart analysis

S4		S3		S2	
1 25%	2 50%	4 44%	2 22%	1 20%	2 40%
100% 100%	50% 50%	-25% 25%	100% 100%	100% 100%	100% 100%
	1 25%		1 11%	1 20%	1 20%
	100% 100%		50% 50%	100% 100%	100% 100%
S5		S6		S1	
1 25%	1 25%		1 100%	4 57%	1 14%
-100	100% 100%		100% 100%	-25% 25%	100% 100%
	1 25%				2 29%
	100% 100%				50%

11 37%	9 30%	3 10%
-18% 27%	89% 89%	33% 67%
	3 10%	4 13%
	67% 67%	75% 75%

Total events Total events %
Efficiency % Events # in %

DISTRIBUZIONE RICEZIONE #,+

Total Zone Chart analysis

S4		S3		S2	
	1 100%	2 50%	2 50%	1 25%	2 50%
	100% 100%	50% 50%	100% 100%	100% 100%	100% 100%
				1 25%	
				100% 100%	
S5		S6		S1	
1 33%	1 33%		1 100%	2 67%	1 33%
-100	100% 100%		100% 100%	-100	100% 100%
	1 33%				
	100% 100%				

6 38%	6 38%	2 12%
-33% 17%	100% 100%	100% 100%
	2 12%	
	100% 100%	

Total events Total events %
Efficiency % Events # in %

DISTRIBUZIONE RICEZIONE #

Total Zone Chart analysis

S4		S3		S2	
1 33%	1 33%	2 40%			
100% 100%		-100			
	1 33%		1 20%	2 40%	
	100% 100%		50% 50%		1 100%
					100% 100%
S5		S6		S1	
	1 100%			2 50%	1 25%
	100% 100%			50% 50%	100% 100%
					1 25%
					-100

5 36%	3 21%	1 7%
40%	67% 67%	-100%
	1 7%	4 29%
		75% 75%

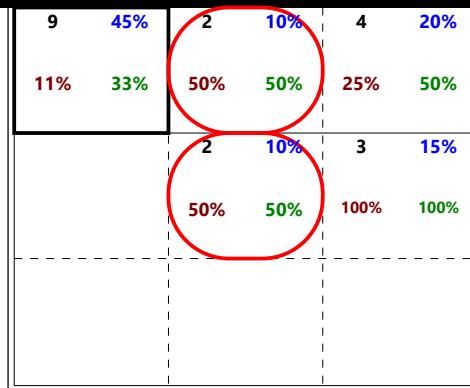
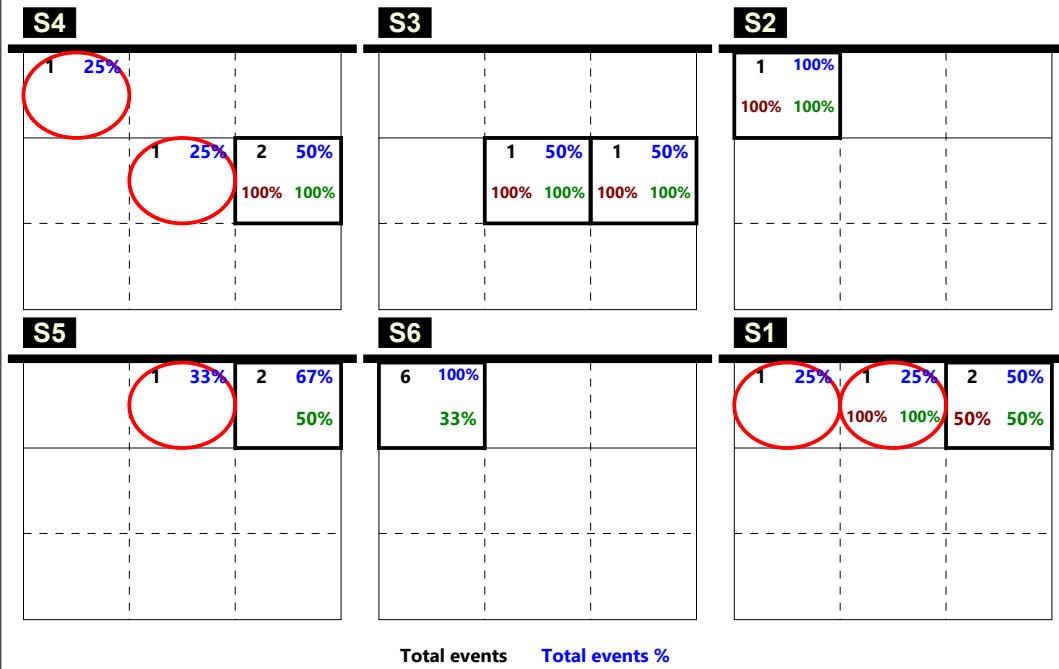
Total events Total events %
Efficiency % Events # in %

DISTRIBUZIONE R +

Total events Total events %
Efficiency % Events # in %

Total Print Composition - _P12 - 11 - Distribuzione 2

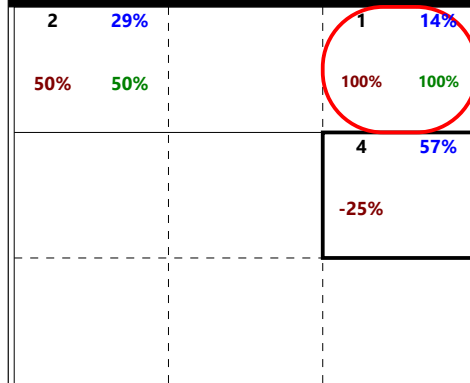
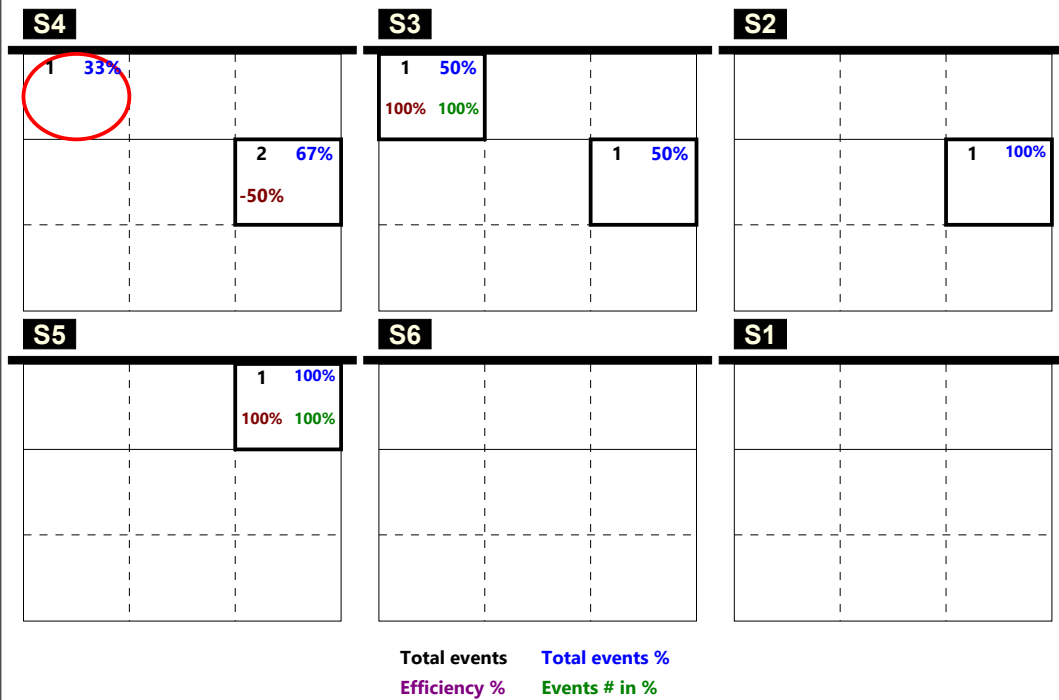
Total Zone Chart analysis



Total events Total events %
Efficiency % Events # in %

DISTRIBUZIONE RICEZIONE !

Total Zone Chart analysis

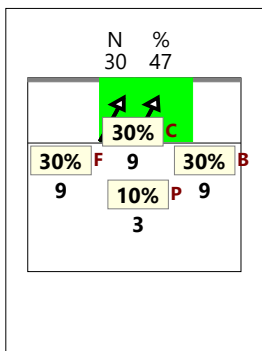


Total events Total events %
Efficiency % Events # in %

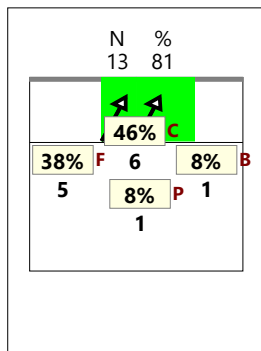
DISTRIBUZIONE RICEZIONE -

CHIAMATA 1 totale (K1 + KH)

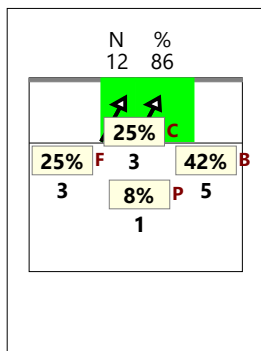
TOTALE



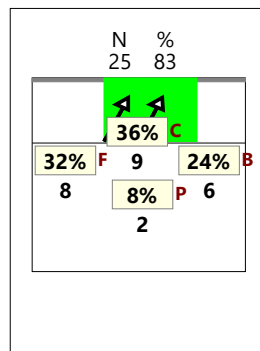
RICEZIONE



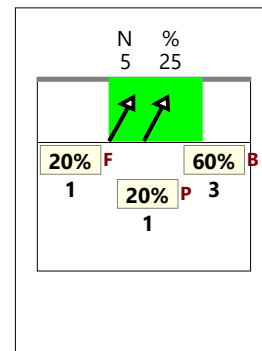
RICEZIONE +



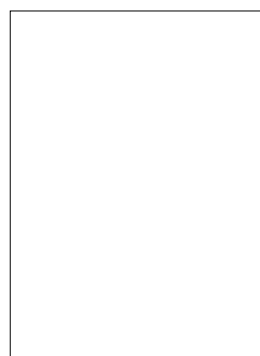
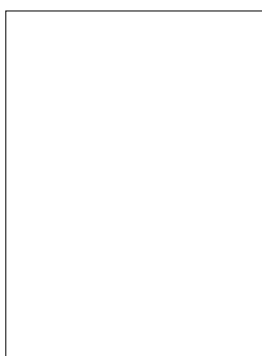
RICEZIONE # +



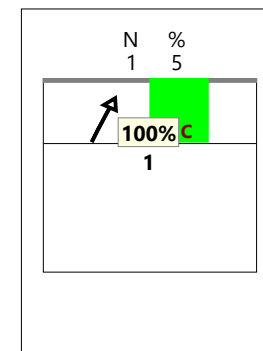
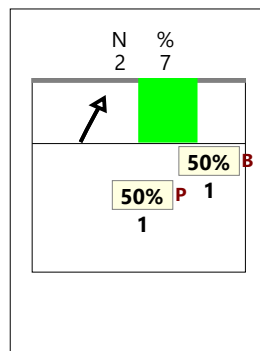
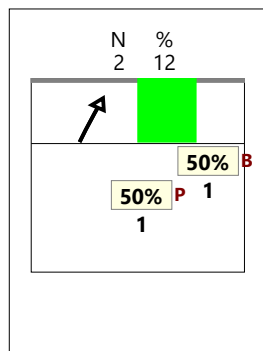
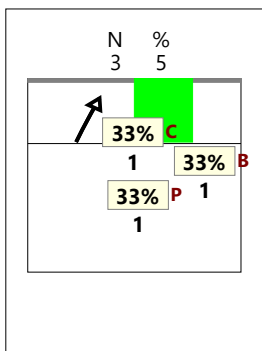
RICEZIONE !



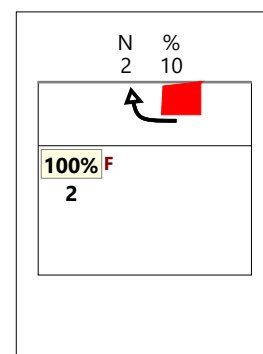
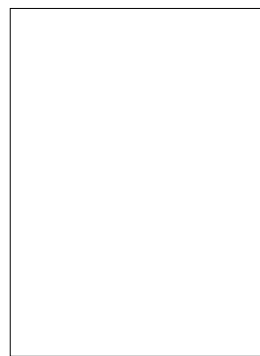
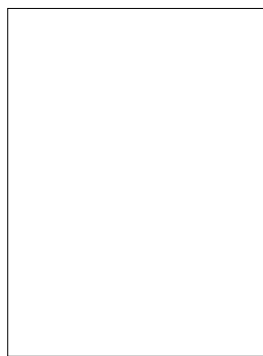
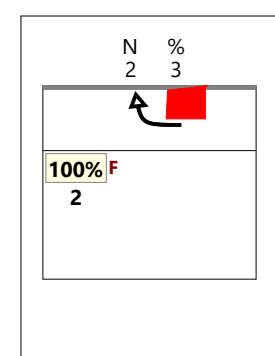
CHIAMATA 2 totale (K2 + KW)



CHIAMATA 7 totale (K7 + KX)

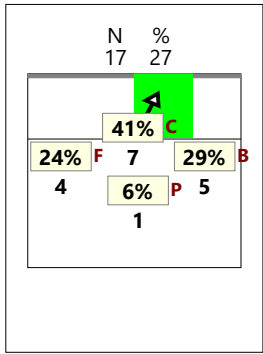


CHIAMATA CC totale (KD + KJ)

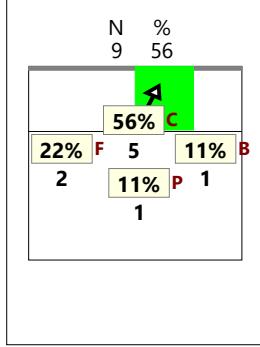


CHIAMATA 1 classica (K1)

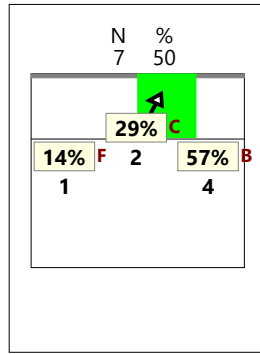
TOTALE



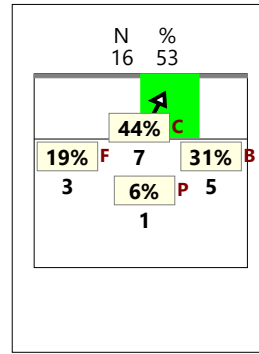
RICEZIONE



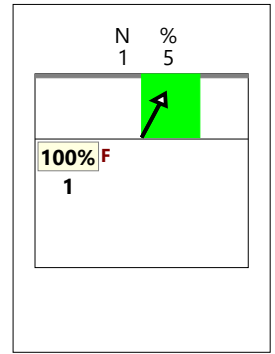
RICEZIONE +



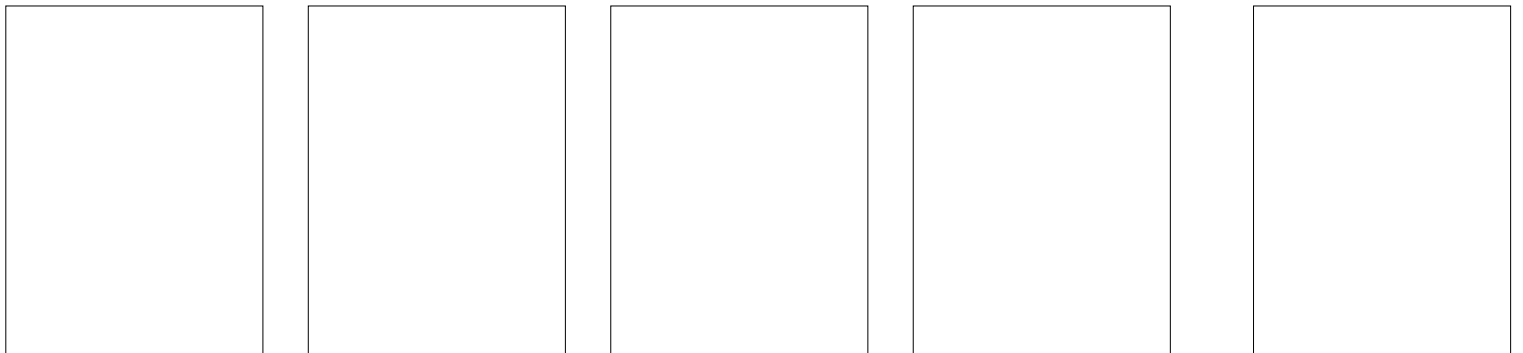
RICEZIONE # +



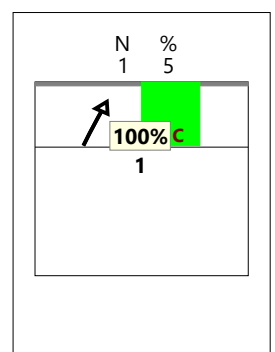
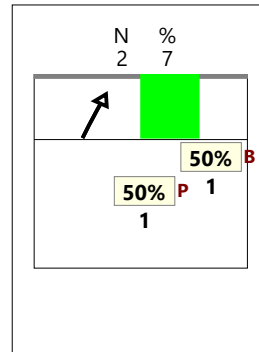
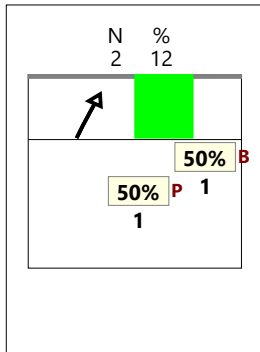
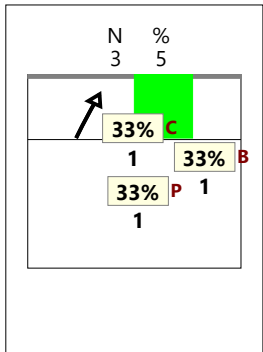
RICEZIONE !



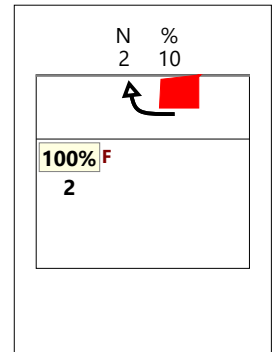
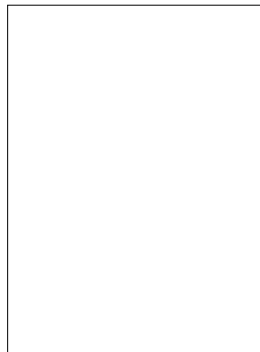
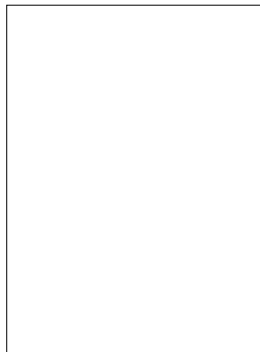
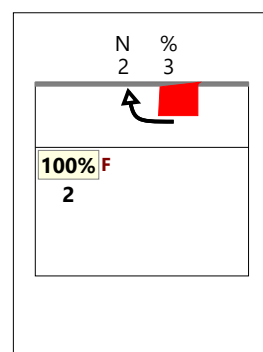
CHIAMATA 2 classica (K2)



CHIAMATA 7 classica (K7)

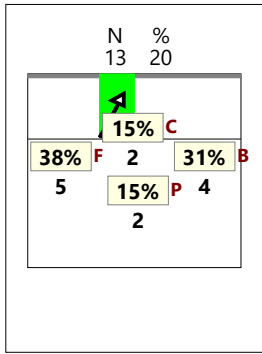


CHIAMATA CC classica (KD)

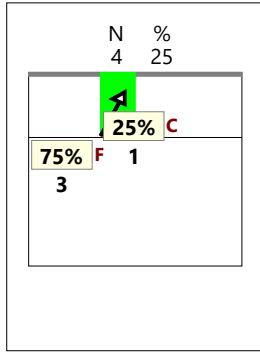


CHIAMATA 1 Centro rete (KH)

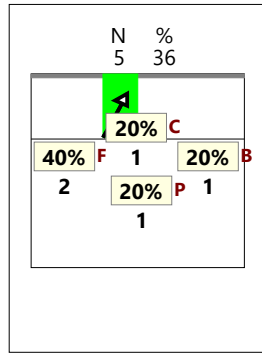
TOTALE



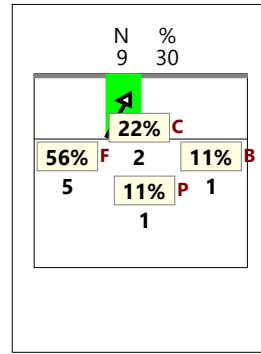
RICEZIONE



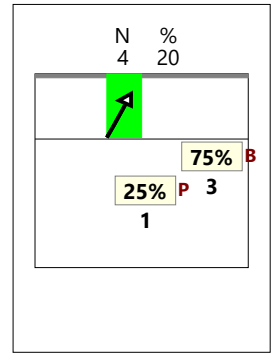
RICEZIONE +



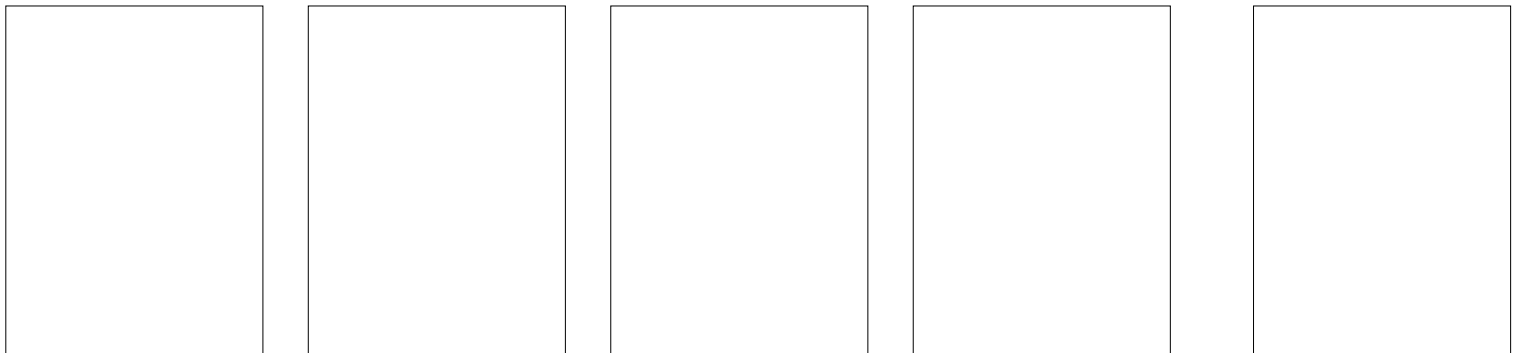
RICEZIONE # +



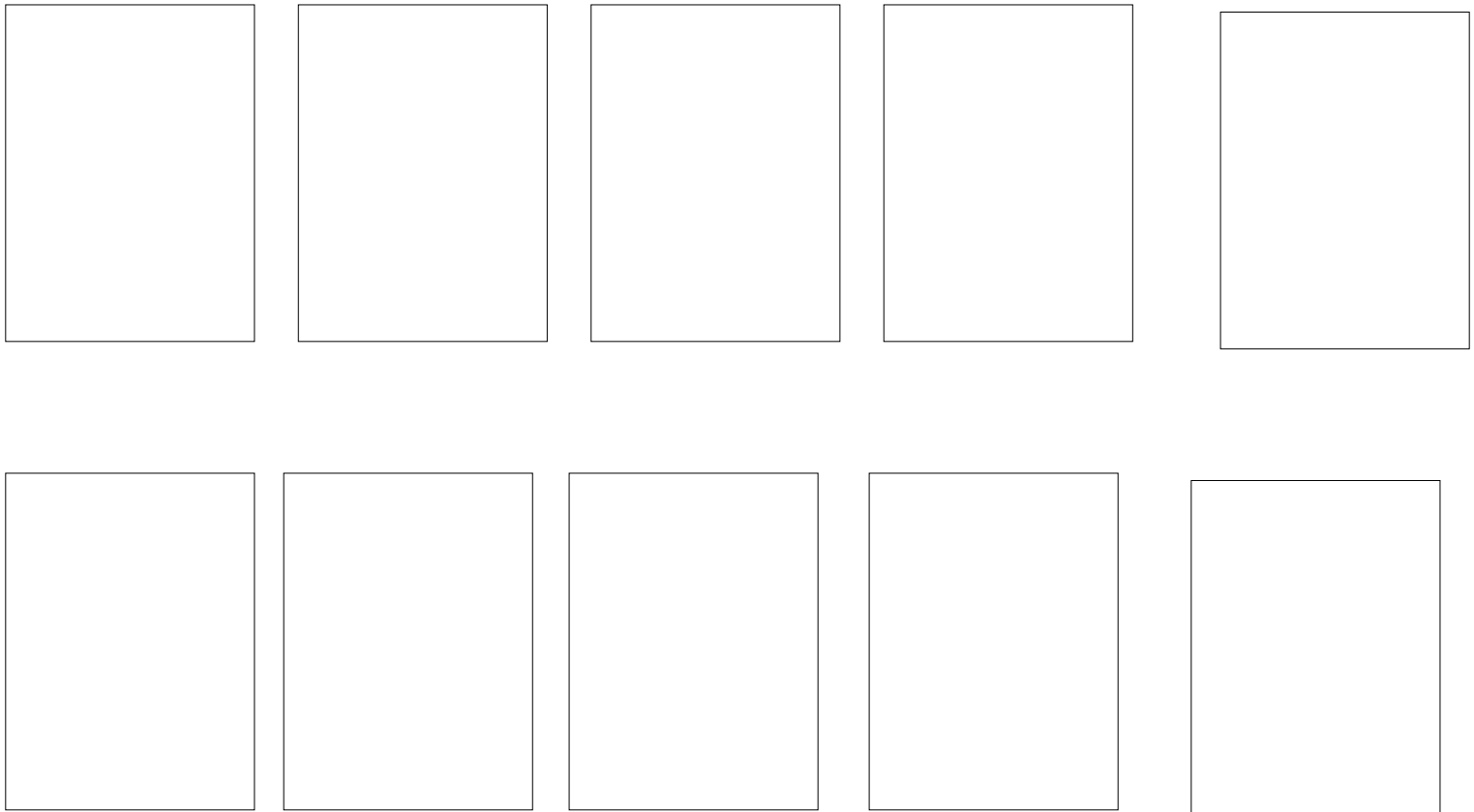
RICEZIONE !



CHIAMATA 2 Centro rete (KW)



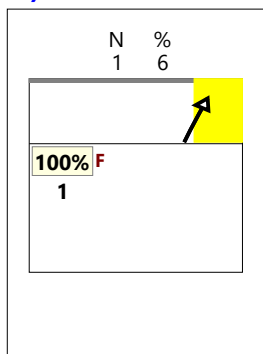
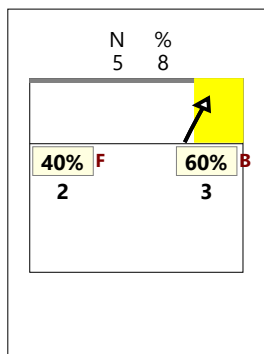
CHIAMATA 7 Centro rete (KX)



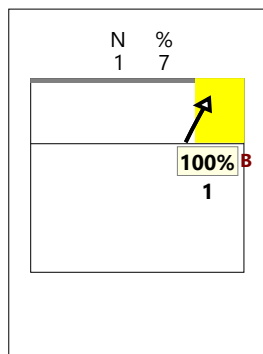
TOTALE

VERSO Z2

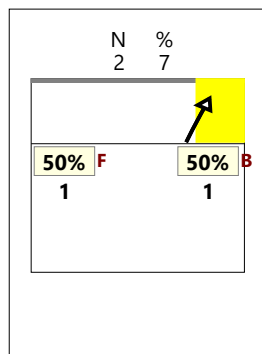
centrale vicino (KM) RICEZIONE



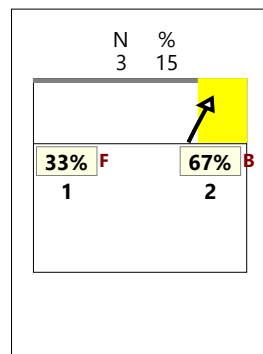
RICEZIONE +



RICEZIONE #,+

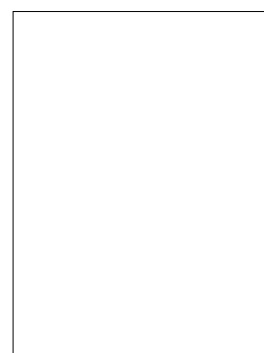
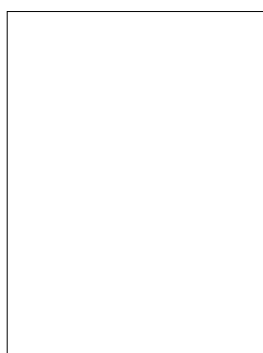
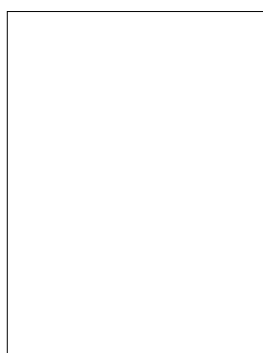
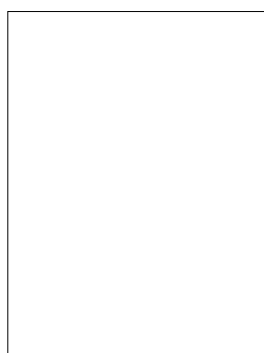


RICEZIONE !



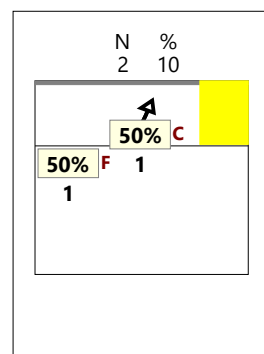
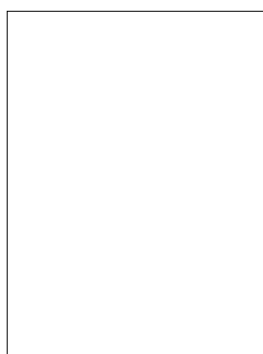
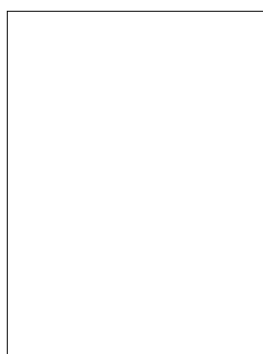
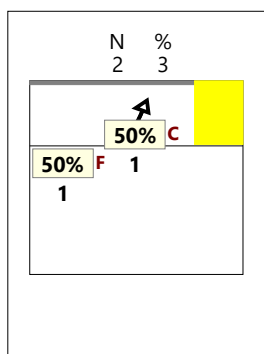
VERSO Z2

centrale dietro (KA)



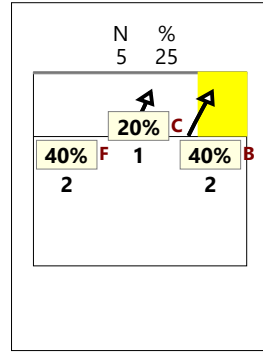
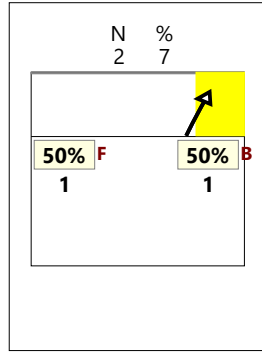
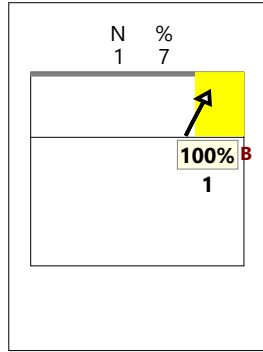
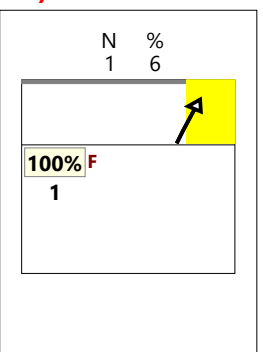
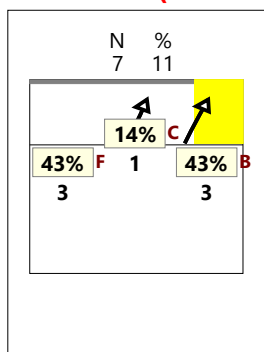
VERSO Z2

centrale lontano (KC)



VERSO Z2

TOTALE (KM KA KC)



TOTALE

VERSO Z4

centrale avanti (KP) RICEZIONE #

RICEZIONE +

RICEZIONE #,+

RICEZIONE !

VERSO Z4

centrale dietro (KQ)

VERSO Z4

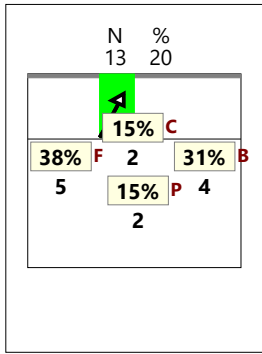
centrale lontano (KS)

VERSO Z4

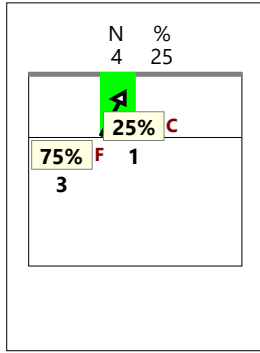
TOTALE (KP KQ KS)

CHIAMATA 1 centro rete e verso 4 (KH + KP)

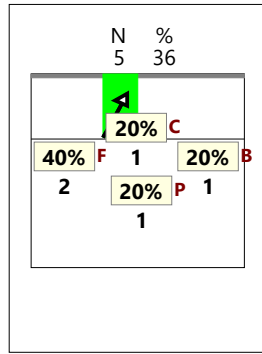
TOTALE



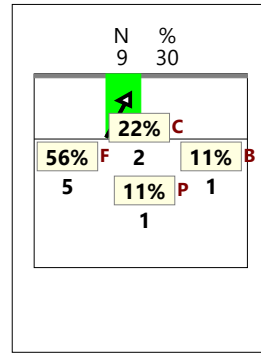
RICEZIONE



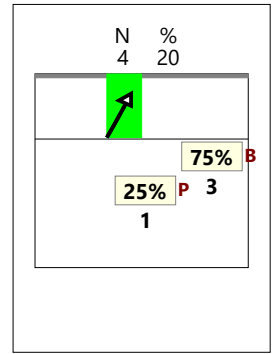
RICEZIONE +



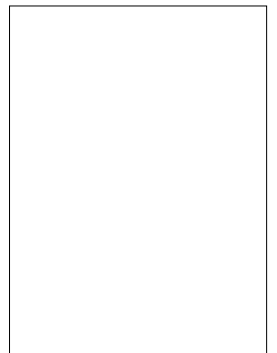
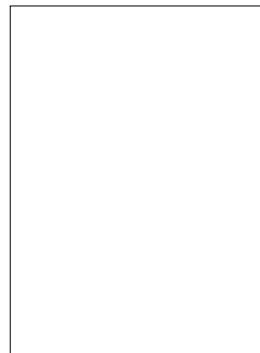
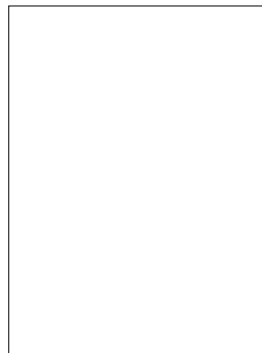
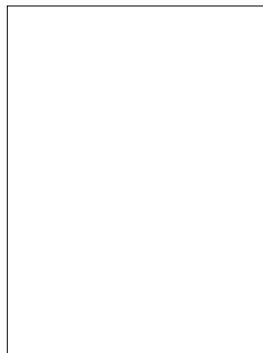
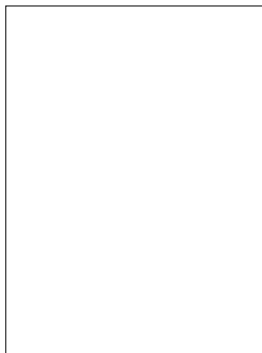
RICEZIONE # +



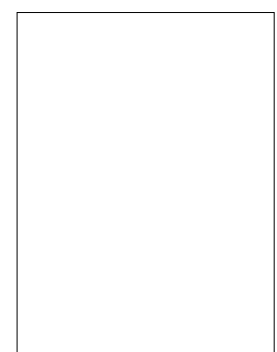
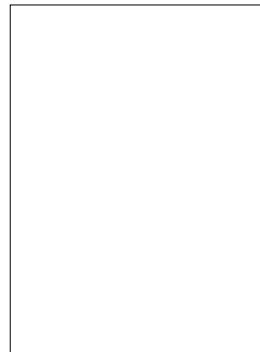
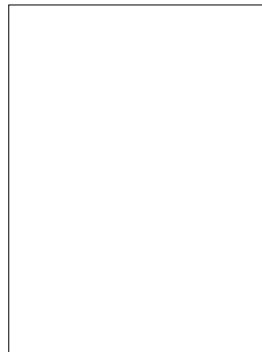
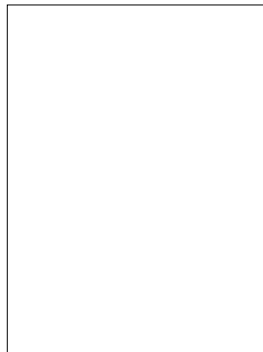
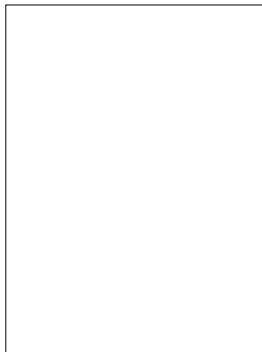
RICEZIONE !



CHIAMATA 2 centro rete e verso 4 (KW + KQ)

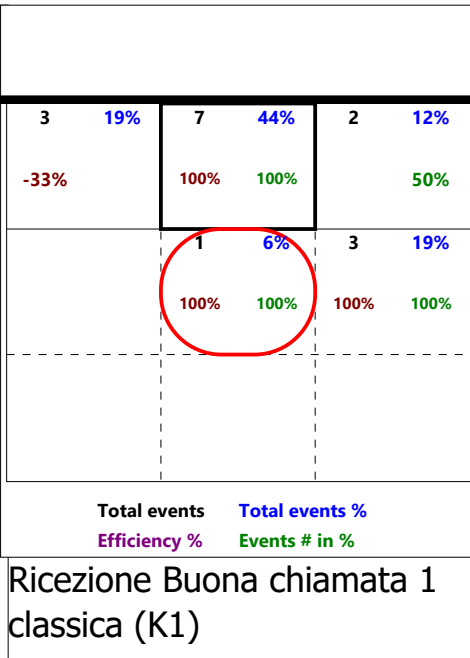
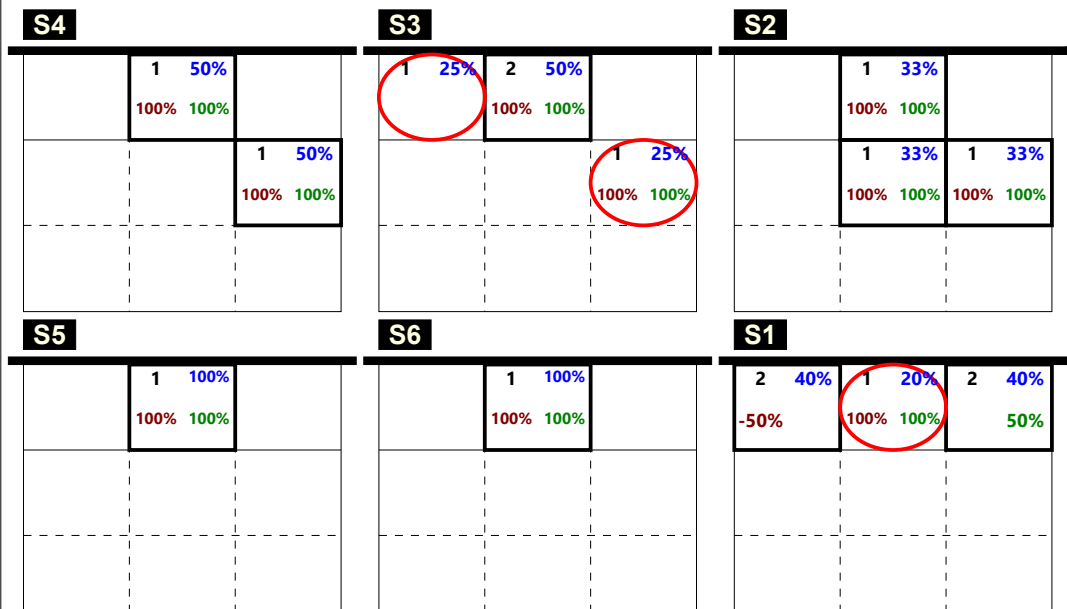


CHIAMATA 7 centro rete e verso 4 (KX + KS + KJ)

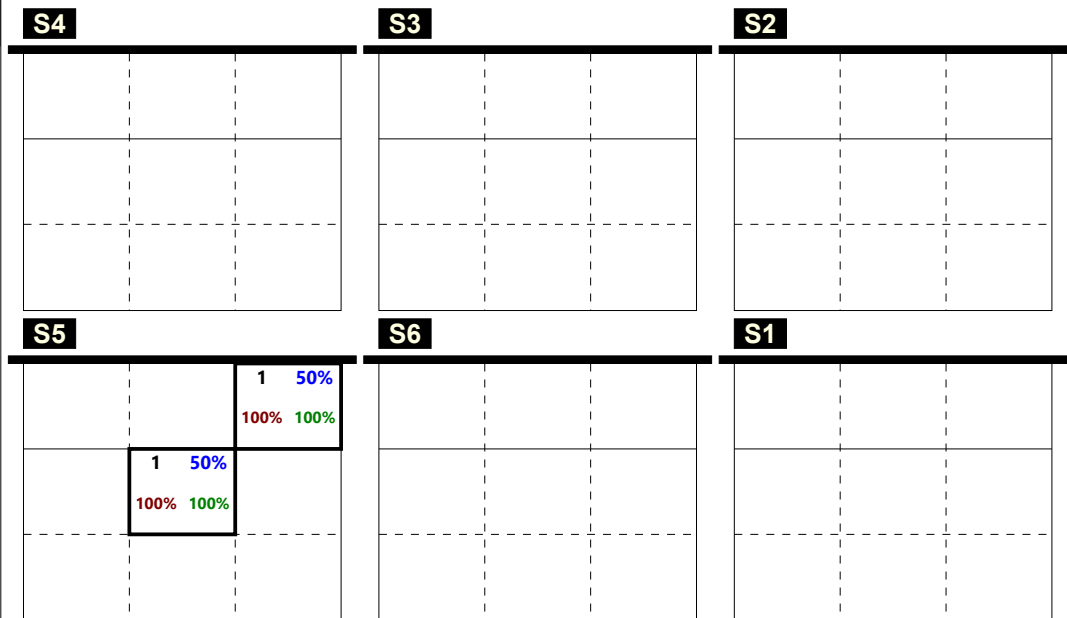


Total Print Composition - 19 - Distribuzione chiamata 1, 7 e 2 classica su #+ per rotazione

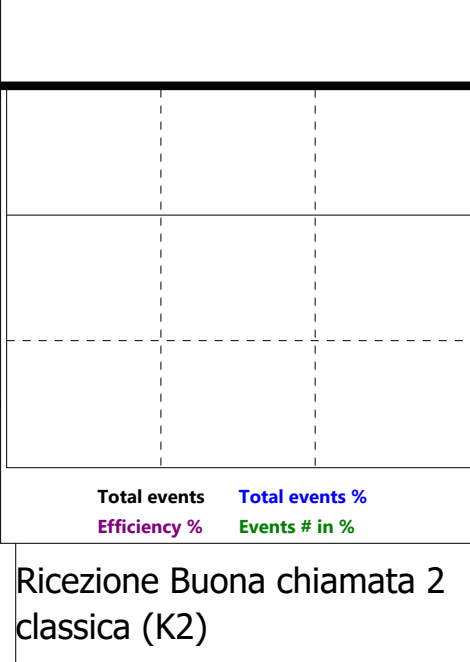
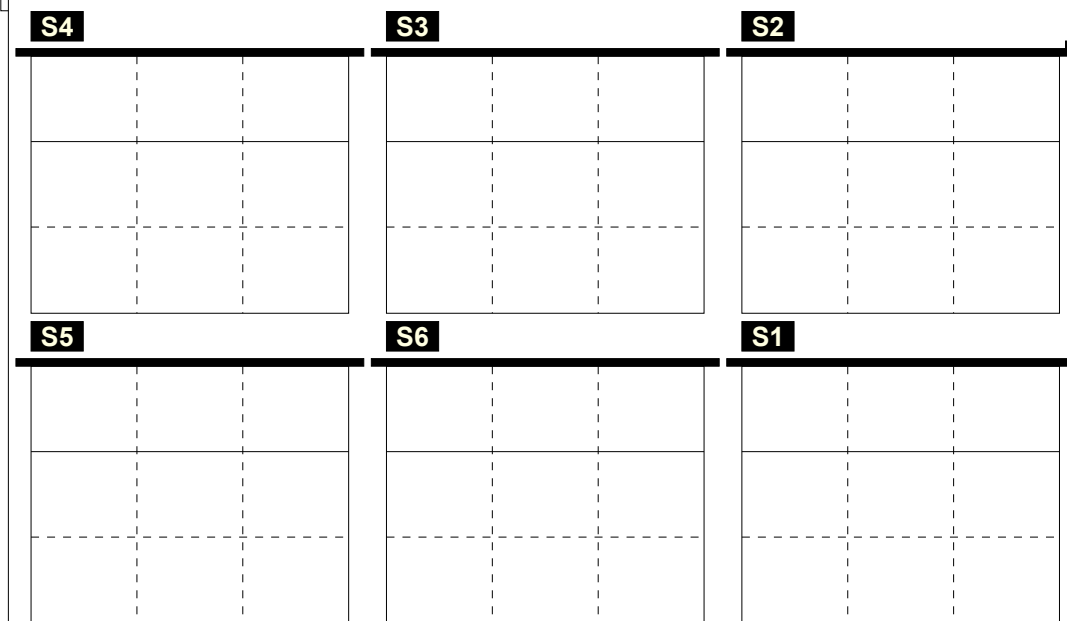
Total Zone Chart analysis



Total Zone Chart analysis



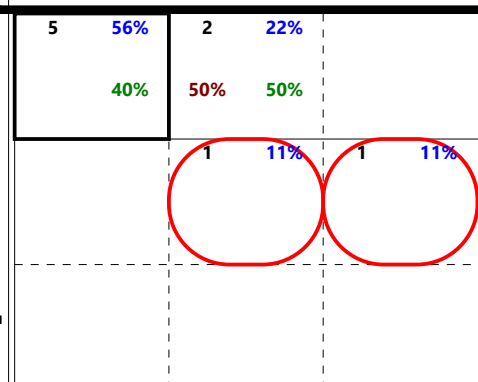
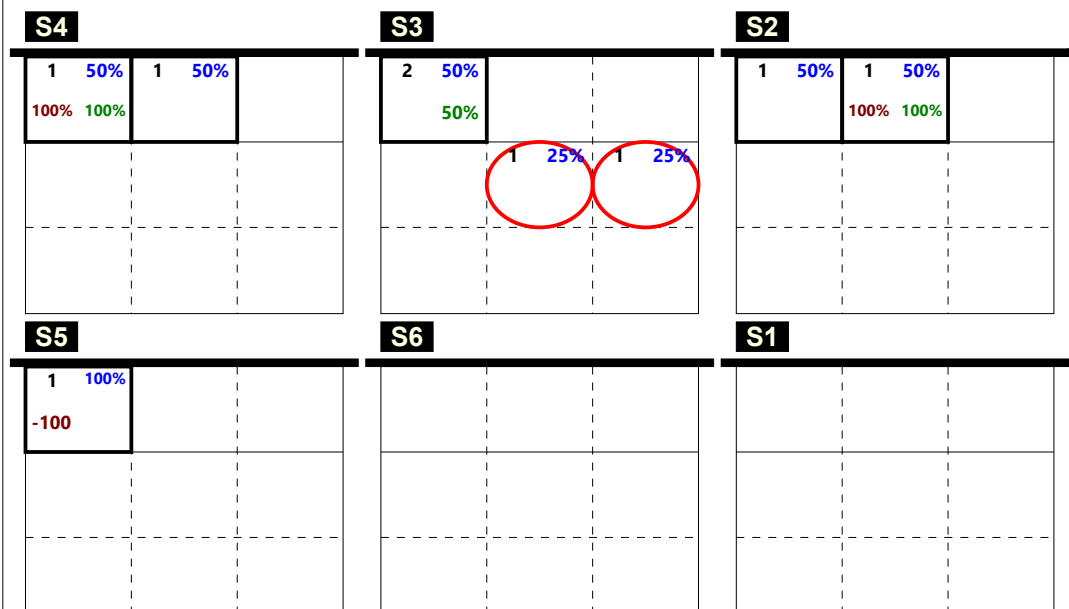
Total Zone Chart analysis



Total events Total events %
Efficiency % Events # in %

Total Print Composition - 20 - Distribuzione chiamata 1, 7 e 2 centro rete su #+ per rotazione

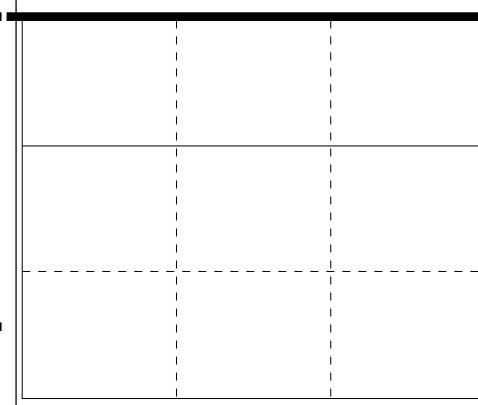
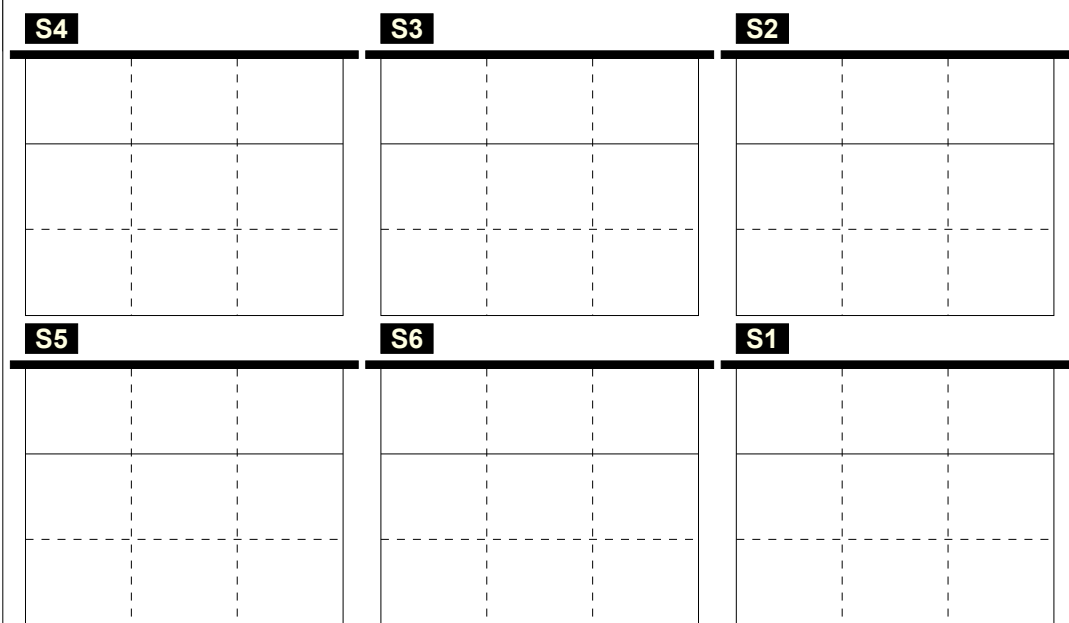
Total Zone Chart analysis



Total events Total events %
Efficiency % Events # in %

Ricezione Buona chiamata 1
centro rete (KH)

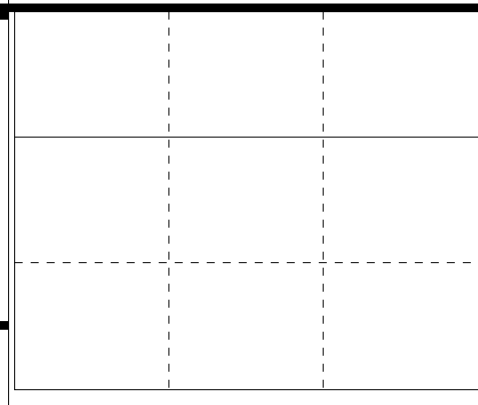
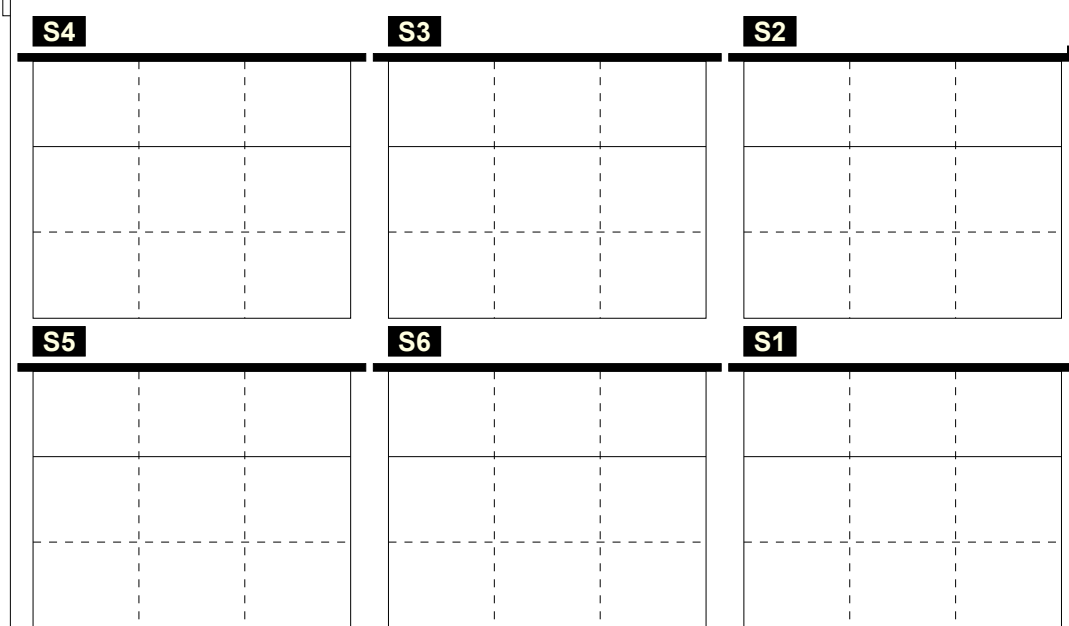
Total Zone Chart analysis



Total events Total events %
Efficiency % Events # in %

Ricezione Buona chiamata 7
centro rete KX + KJ

Total Zone Chart analysis



Total events Total events %
Efficiency % Events # in %

Ricezione Buona chiamata 2
centro rete (KW)

Total events Total events %
Efficiency % Events # in %

Total Print Composition - 21 - Distribuzione totale chiamata 1, 2 e 7 (classica + centro rete) su #+ per rotazione

Total Zone Chart analysis

S4			S3			S2		
1 25%	2 50%		3 38%	2 25%		1 20%	2 40%	
100% 100%	50% 50%		33%	100% 100%		100% 100%		
		1 25%		1 12%	2 25%	1 20%	1 20%	
		100% 100%			50% 50%	100% 100%	100% 100%	
S5			S6			S1		
1 50%	1 50%			1 100%		2 40%	1 20%	2 40%
-100	100% 100%			100% 100%		-50%	100% 100%	50%

8 32%	9 36%	2 8%
-12%	25%	89%
	89%	50%
	2 8%	4 16%
	50%	50%
		75%
		75%

Total events Total events %
Efficiency % Events # in %

Ricezione Buona chiamata 1 totale (K1 + KH)

Total Zone Chart analysis

S4			S3			S2		
S5			S6			S1		
		1 50%						
		100% 100%						
	1 50%							
	100% 100%							

		1 50%
		100% 100%
	1 50%	
	100% 100%	

Total events Total events %
Efficiency % Events # in %

Ricezione Buona chiamata 7 totale (K7 + KX)
no KD + KJ

Total Zone Chart analysis

S4			S3			S2		
S5			S6			S1		

Total events Total events %
Efficiency % Events # in %

Ricezione Buona chiamata 2 totale (K2 + KW)

Total events Total events %
Efficiency % Events # in %

Total Print Composition - 22 - Distribuzione verso 2 su #+ per rotazione

Total Zone Chart analysis

S4	S3	S2
S5	S6	S1
		2 100%
		50%

2	100%		
	50%		

Total events Total events %
Efficiency % Events # in %

Ricezione Buona verso 2 centrale vicino (KM)

Total Zone Chart analysis

S4	S3	S2
S5	S6	S1

Total events Total events %
Efficiency % Events # in %

Ricezione Buona verso 2 centrale lontano (KC)

Total Zone Chart analysis

S4	S3	S2
S5	S6	S1

Total events Total events %
Efficiency % Events # in %

Ricezione Buona verso 2 centrale dietro (KA)

Total events Total events %
Efficiency % Events # in %

Total Print Composition - 23 - Distribuzione verso 2 su ! per rotazione

Total Zone Chart analysis

S4	S3	S2
S5	S6	S1
		2 100% 50%
Total events Total events % Efficiency % Events # in %		

2 100%		
50%		
Total events Total events % Efficiency % Events # in %		
Ricezione Buona verso 2 totale (KM + KC + KA) *inclusa KA su rice !		
Total events Total events % Efficiency % Events # in %		

Total events Total events % Efficiency % Events # in %		

Total events Total events % Efficiency % Events # in %		

Total Zone Chart analysis

S4	S3	S2
1 50%		
1 50% 100% 100%		
S5	S6	S1
1 50% 1 50% 100% 100%	1 100%	
Total events Total events % Efficiency % Events # in %		

2 40%	1 20%	1 20%
	100% 100%	1 20% 100% 100%
Total events Total events % Efficiency % Events # in %		
Ricezione ! verso 2 totale (KM + KC + KA)		

Total Print Composition - 24 - Distribuzione verso 4 su #+ per rotazione

Total Zone Chart analysis

S4	S3	S2
S5	S6	S1

Total events Total events %
 Efficiency % Events # in %

Ricezione Buona verso 4 centrale vicino (KP)

Total Zone Chart analysis

S4	S3	S2
S5	S6	S1

Total events Total events %
 Efficiency % Events # in %

Ricezione Buona verso 4 centrale lontano (KS)

Total Zone Chart analysis

S4	S3	S2
S5	S6	S1

Total events Total events %
 Efficiency % Events # in %

Ricezione Buona verso 4 centrale dietro (KQ)

Total events Total events %
 Efficiency % Events # in %

Total Print Composition - 25 - Distribuzione verso 4 su ! per rotazione

Total Zone Chart analysis

S4	S3	S2
S5	S6	S1

Total events Total events %
 Efficiency % Events # in %

Total events Total events %
 Efficiency % Events # in %

Ricezione Buona verso 4
totale (KP + KQ + KS)
***inclusa KS su rice !**

Total events Total events %
 Efficiency % Events # in %

Total Zone Chart analysis

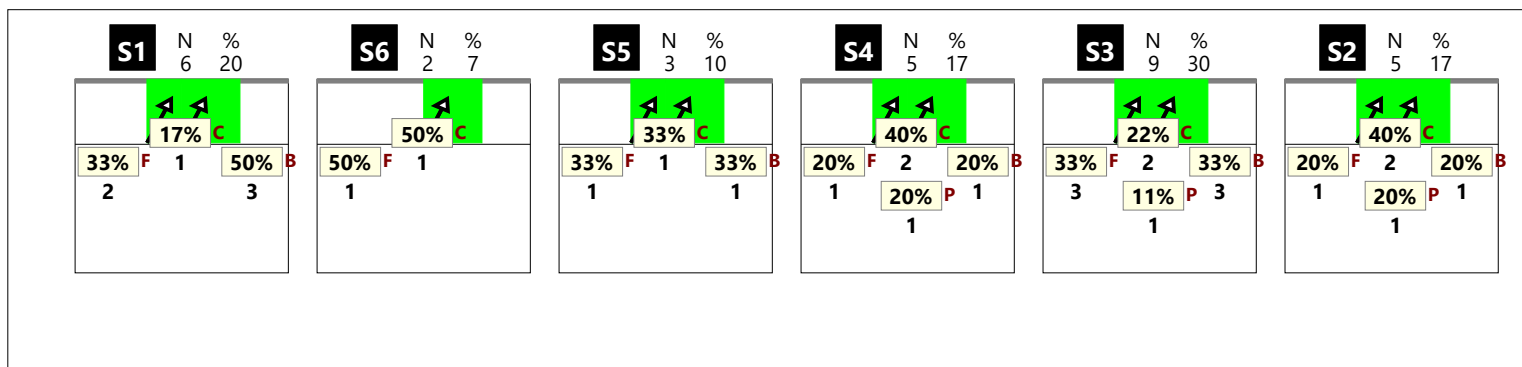
S4	S3	S2
S5	S6	S1

Total events Total events %
 Efficiency % Events # in %

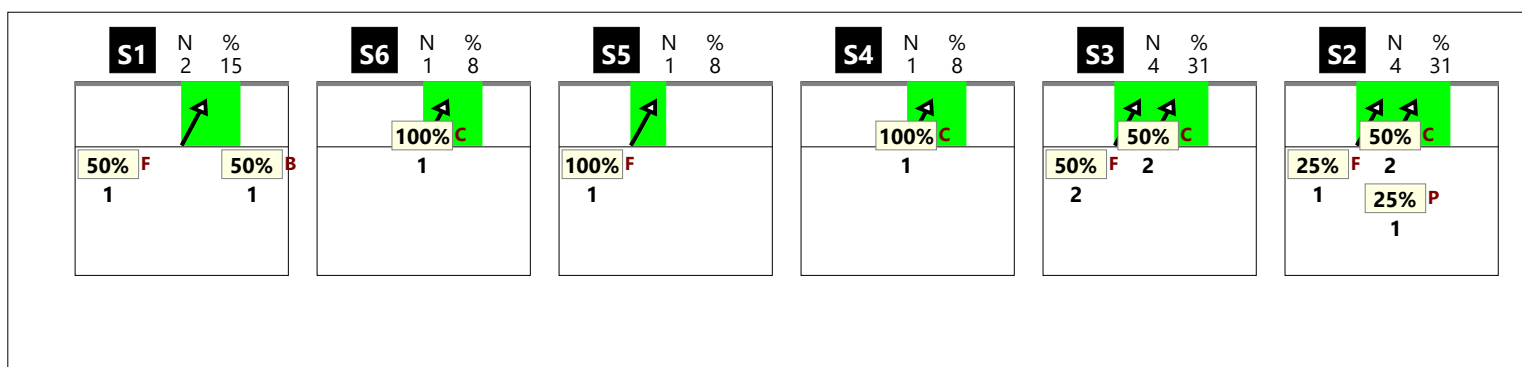
Total events Total events %
 Efficiency % Events # in %

Ricezione ! verso 4
totale (KP + KQ + KS)

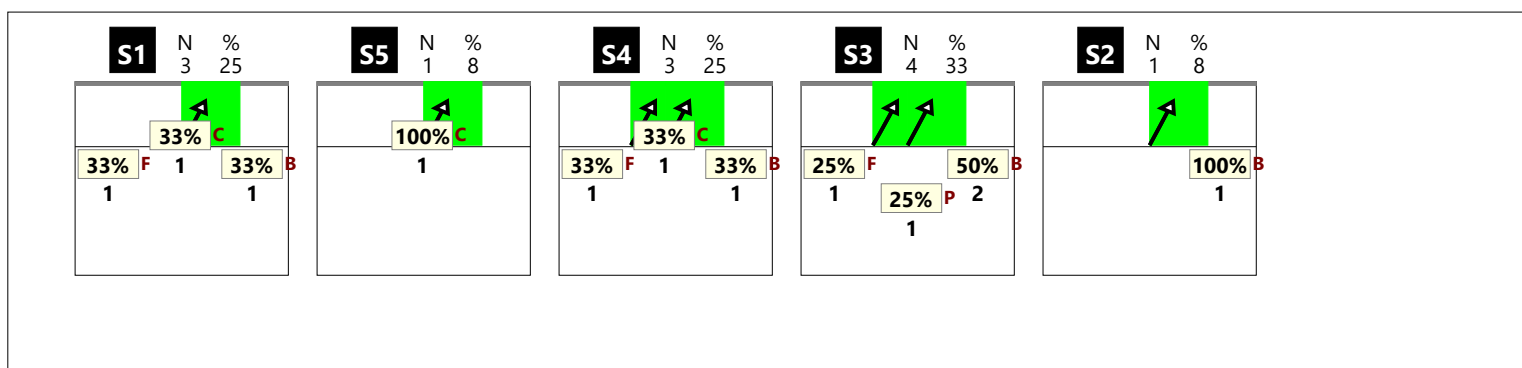
RICEZIONE TOTALE CHIAMATA 1 totale (K1 + KH)



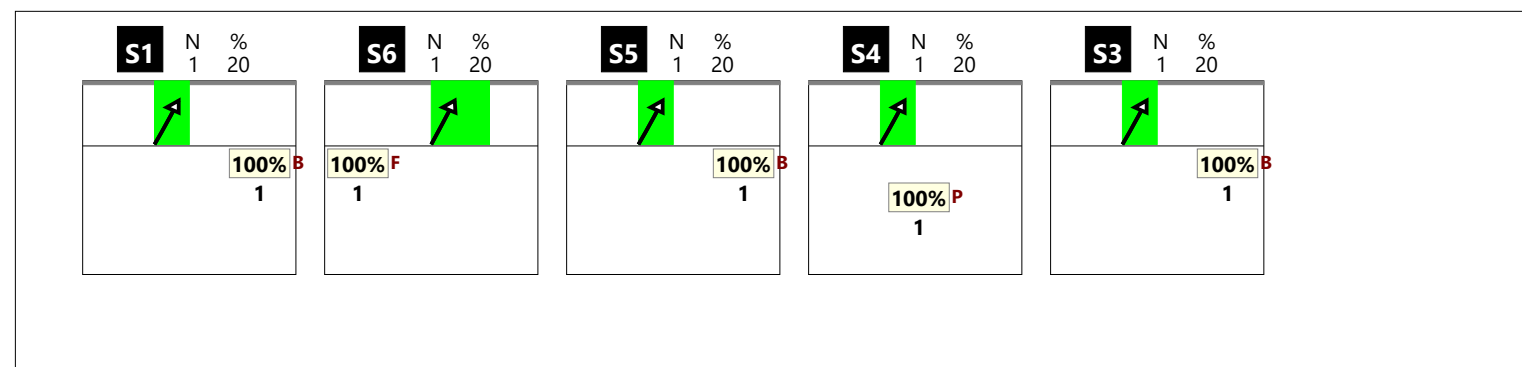
RICEZIONE # CHIAMATA 1 totale (K1 + KH)



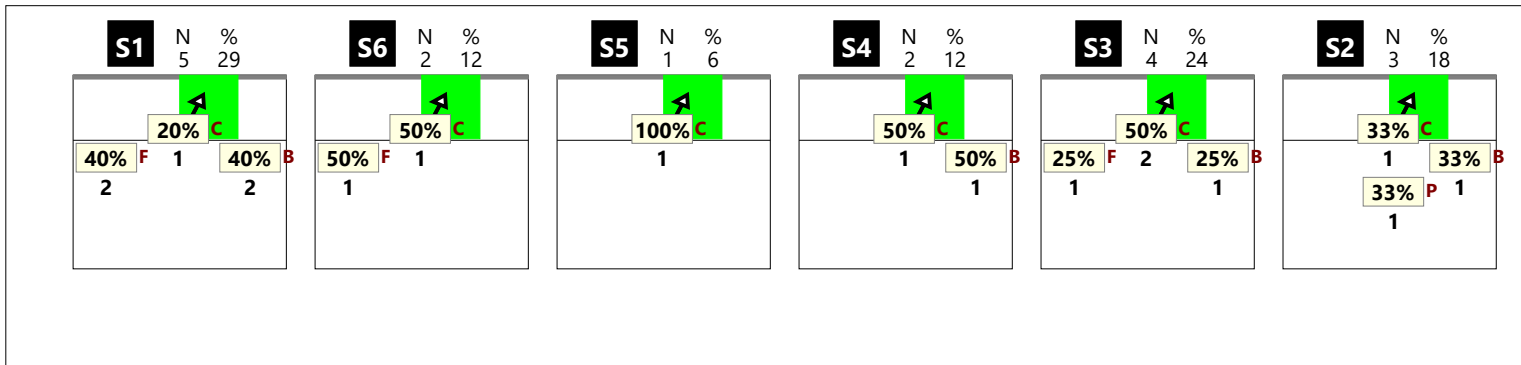
RICEZIONE + CHIAMATA 1 totale (K1 + KH)



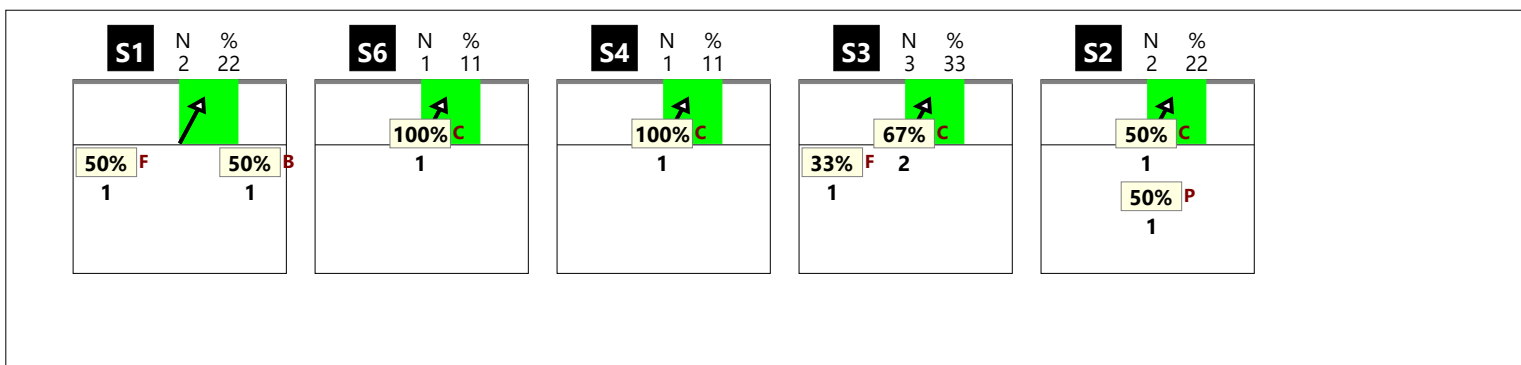
RICEZIONE ! CHIAMATA 1 totale (K1 + KH)



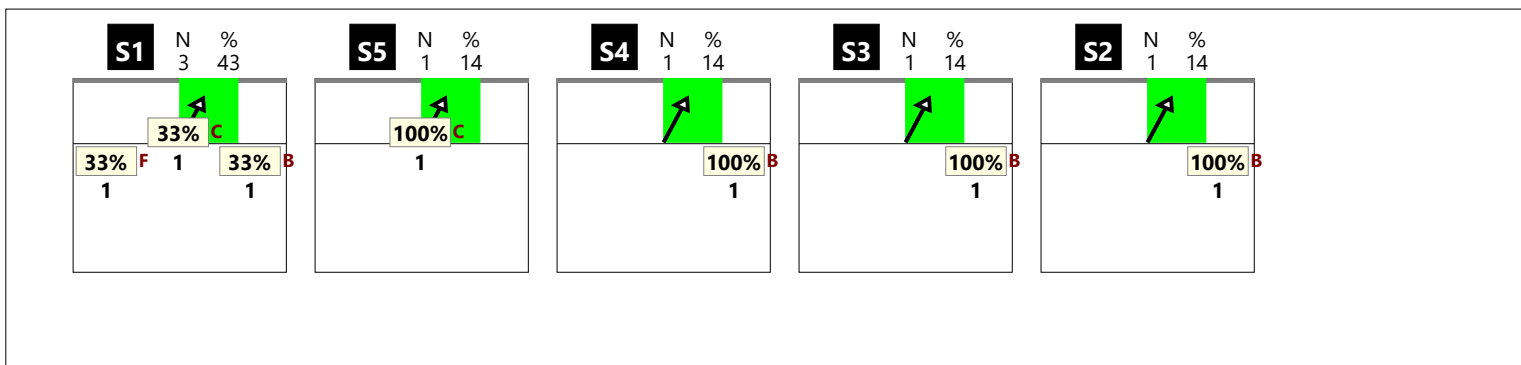
RICEZIONE TOTALE CHIAMATA 1 classica (K1)



RICEZIONE # CHIAMATA 1 classica (K1)



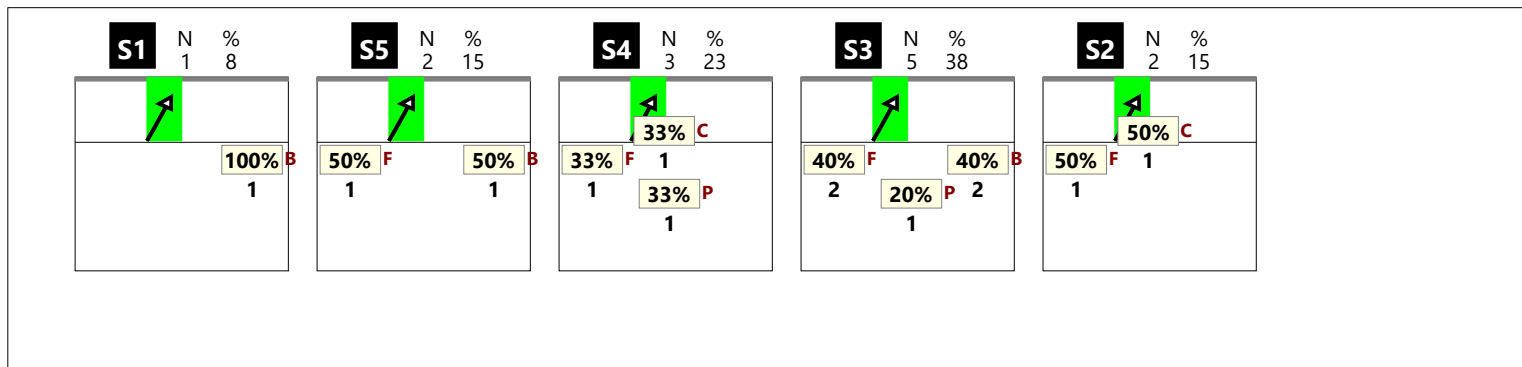
RICEZIONE + CHIAMATA 1 classica (K1)



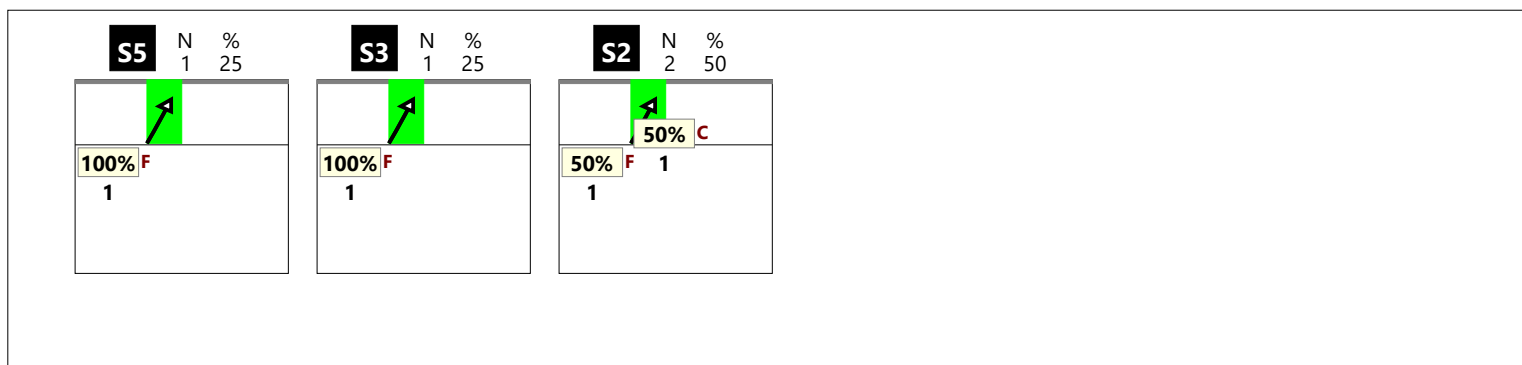
RICEZIONE ! CHIAMATA 1 classica (K1)



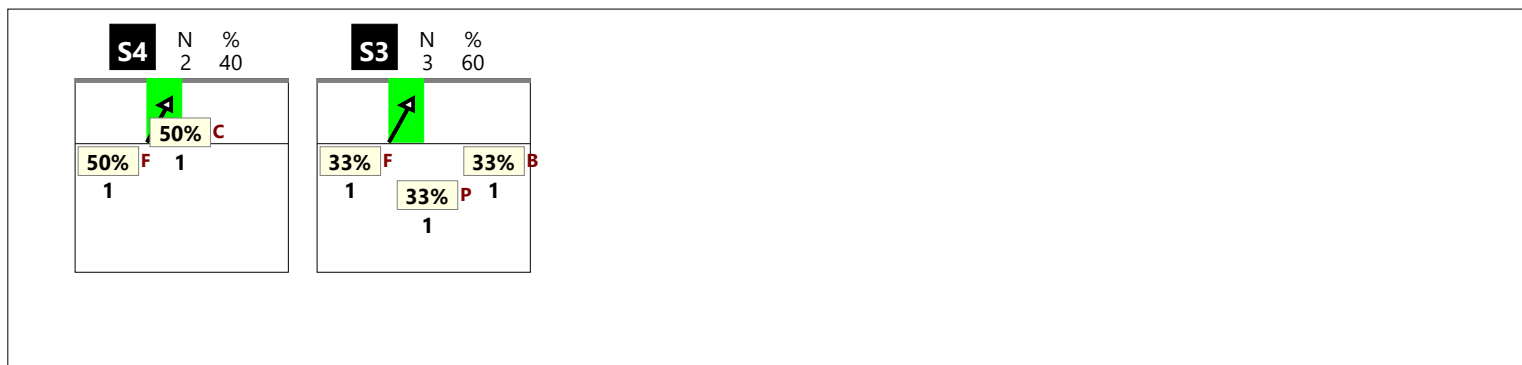
RICEZIONE TOTALE CHIAMATA 1 centro rete (KH)



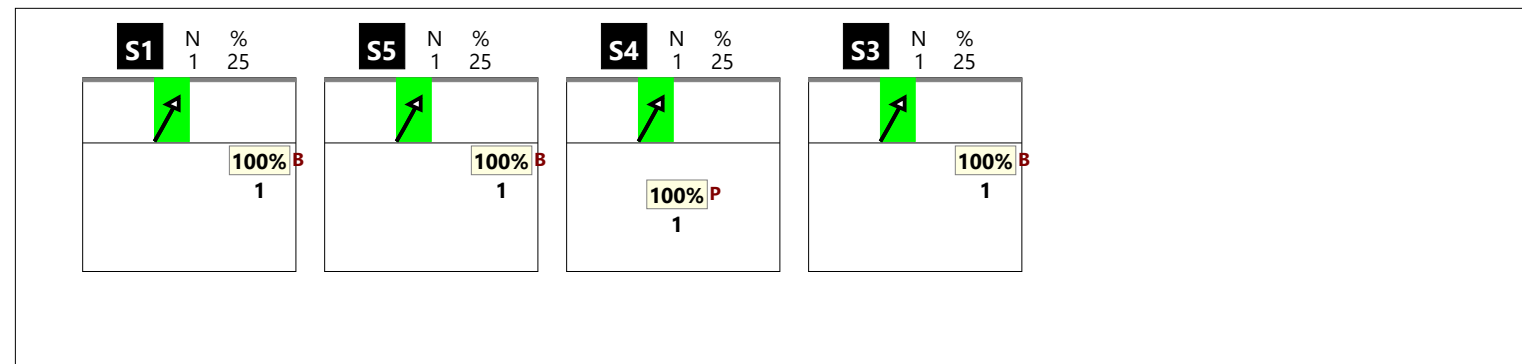
RICEZIONE # CHIAMATA 1 centro rete (KH)



RICEZIONE + CHIAMATA 1 centro rete (KH)



RICEZIONE ! CHIAMATA 1 centro rete (KH)



RICEZIONE TOTALE CHIAMATA 2 totale (K2 + KW)

--

RICEZIONE # CHIAMATA 2 totale (K2 + KW)

--

RICEZIONE + CHIAMATA 2 totale (K2 + KW)

--

RICEZIONE ! CHIAMATA 2 totale (K2 + KW)

--

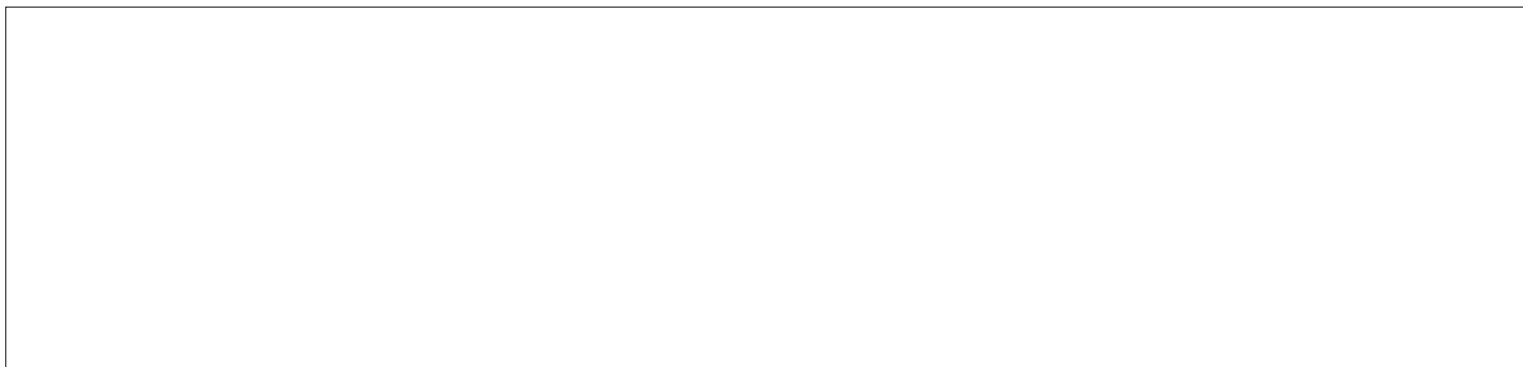
RICEZIONE TOTALE CHIAMATA 2 classica (K2)



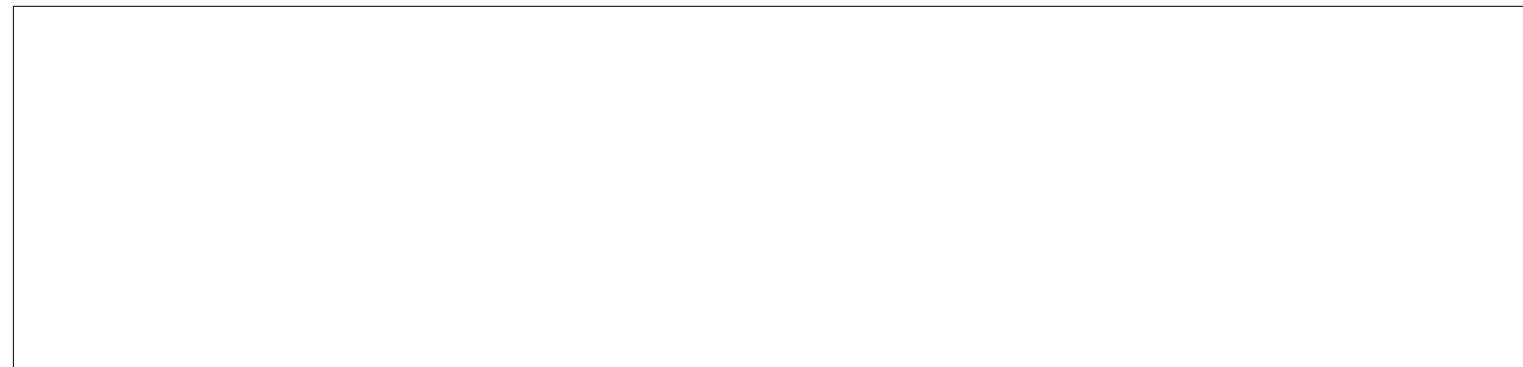
RICEZIONE # CHIAMATA 2 classica (K2)



RICEZIONE + CHIAMATA 2 classica (K2)



RICEZIONE ! CHIAMATA 2 classica (K2)



RICEZIONE TOTALE CHIAMATA 2 centro rete (KW)

--

RICEZIONE # CHIAMATA 2 centro rete (KW)

--

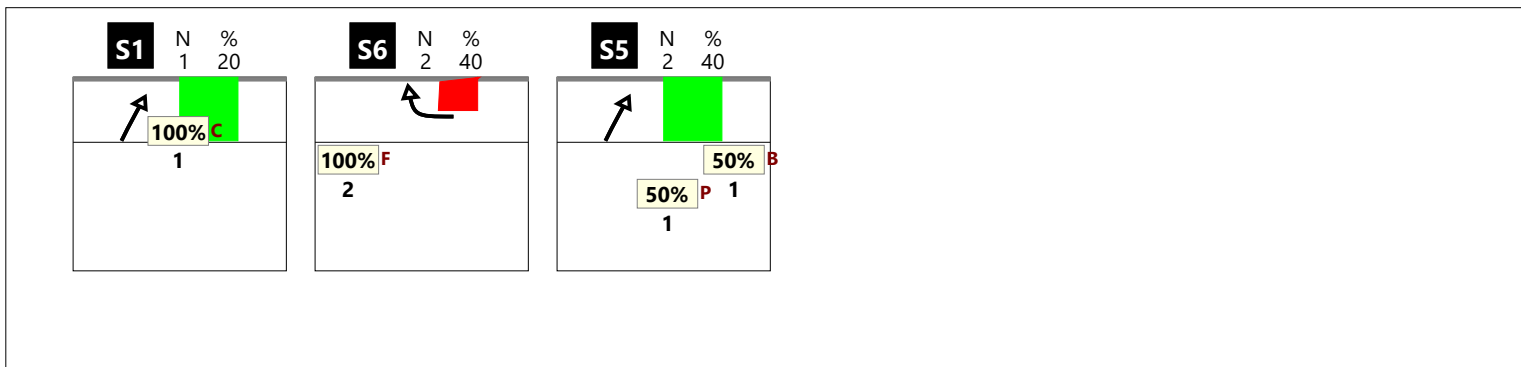
RICEZIONE + CHIAMATA 2 centro rete (KW)

--

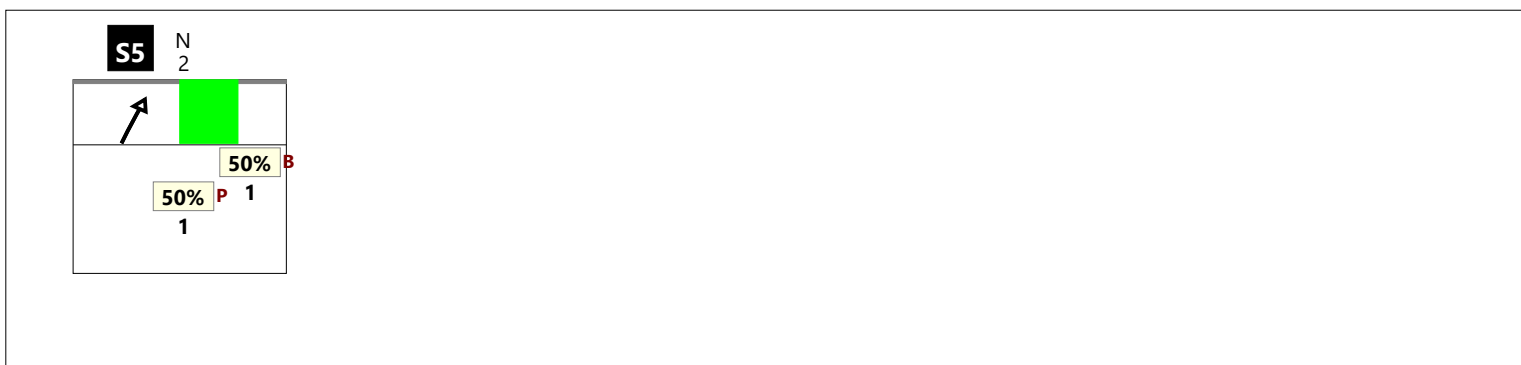
RICEZIONE ! CHIAMATA 2 centro rete (KW)

--

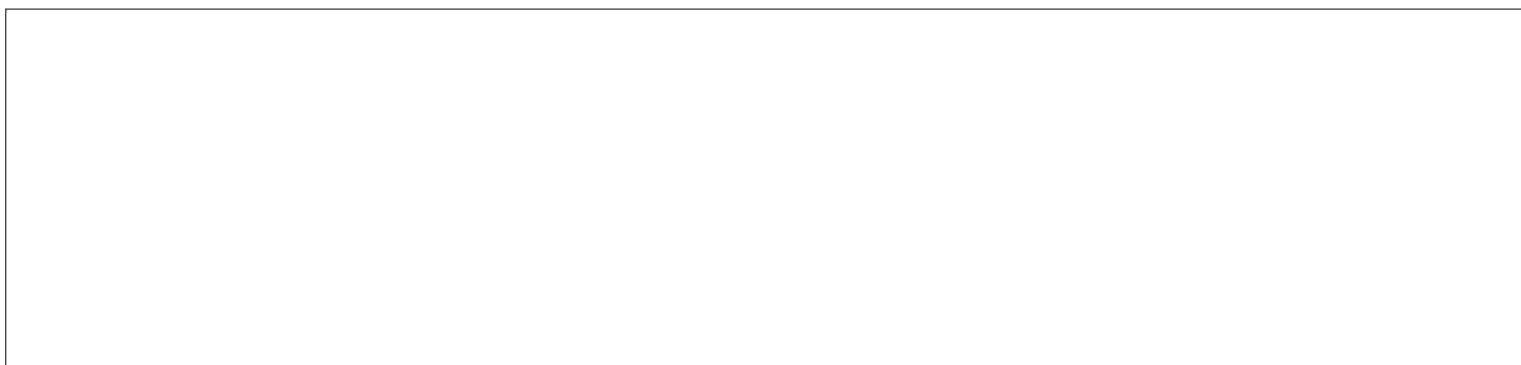
RICEZIONE TOTALE CHIAMATA 7 totale (K7 + KX + KD + KJ)



RICEZIONE # CHIAMATA 7 totale (K7 + KX + KD + KJ)



RICEZIONE + CHIAMATA 7 totale (K7 + KX + KD + KJ)

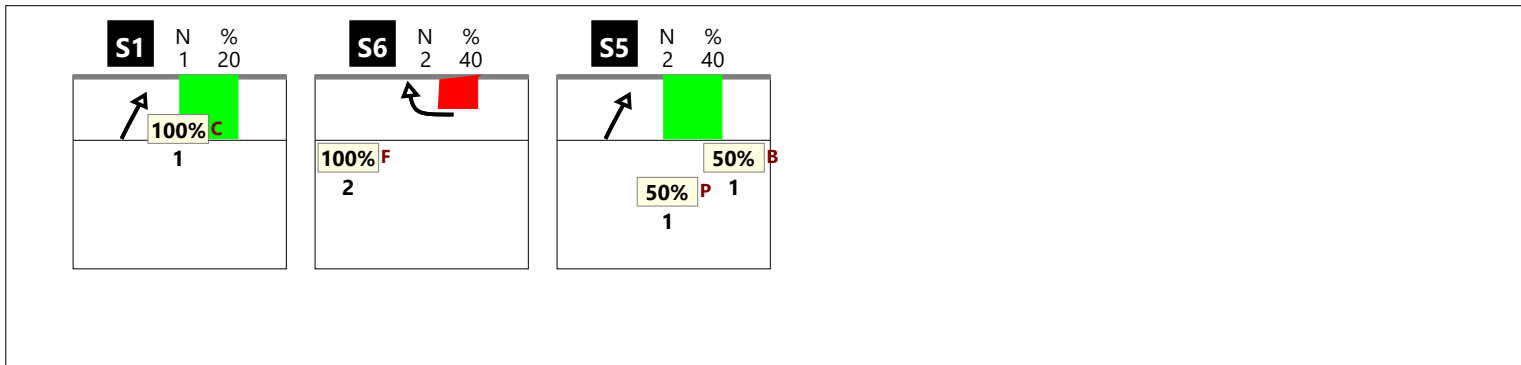


RICEZIONE ! CHIAMATA 7 totale (K7 + KX + KD + KJ)

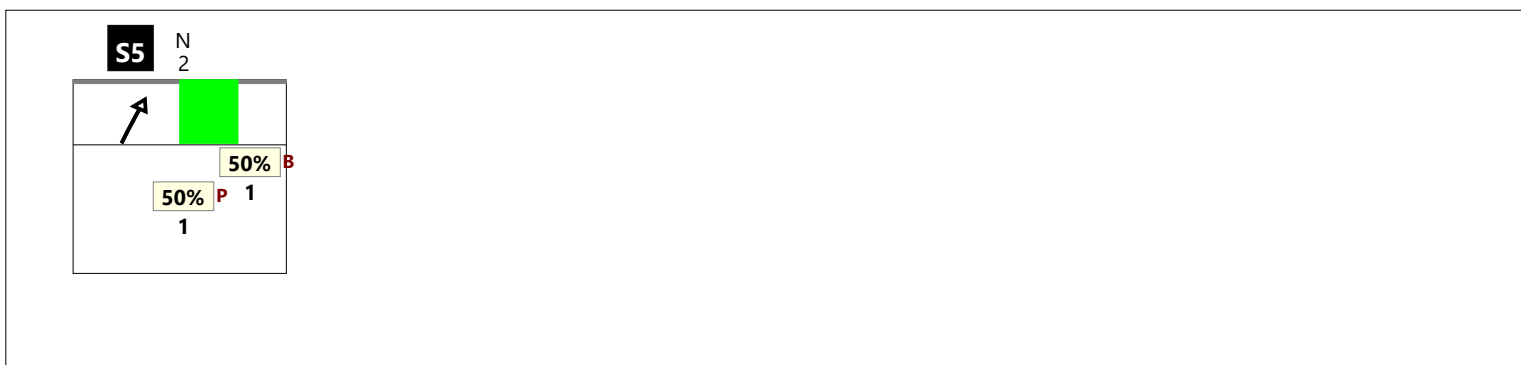


Total Print Composition - 33 - Chiamata 7 classica su #, + e !

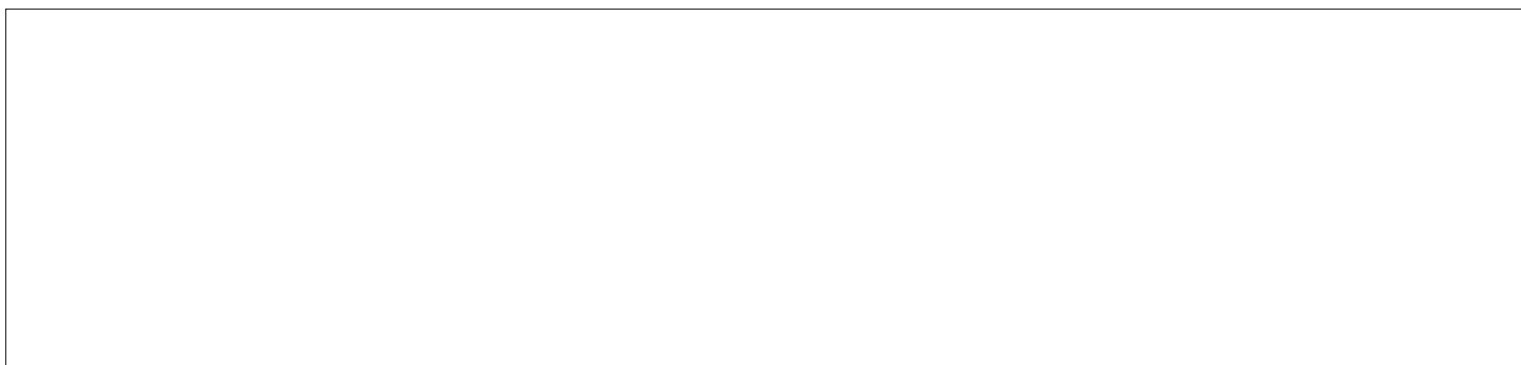
RICEZIONE TOTALE CHIAMATA 7 classica (K7 + KD)



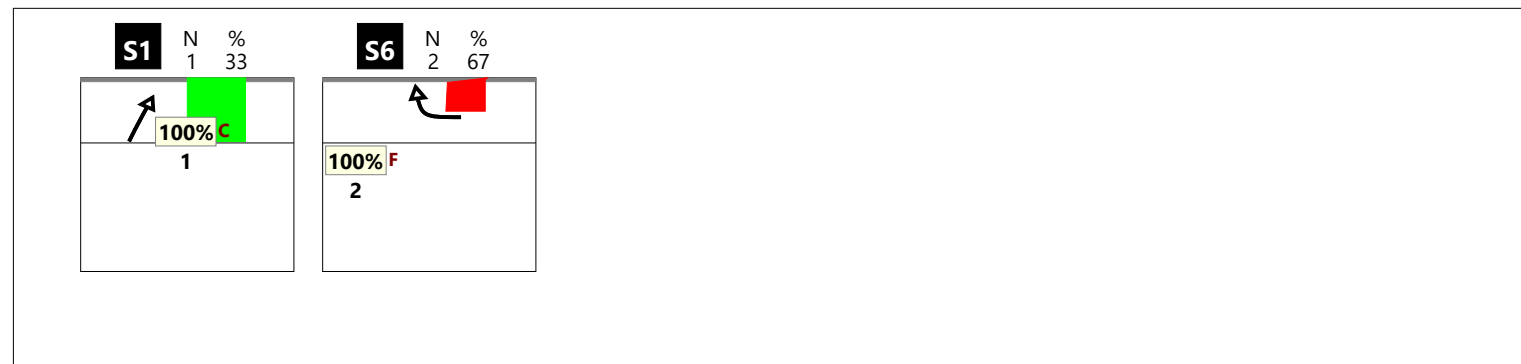
RICEZIONE # CHIAMATA 7 classica (K7 + KD)



RICEZIONE + CHIAMATA 7 classica (K7 + KD)



RICEZIONE ! CHIAMATA 7 classica (K7 + KD)



RICEZIONE TOTALE CHIAMATA 7 centro rete (KX + KJ)

--

RICEZIONE # CHIAMATA 7 centro rete (KX + KJ)

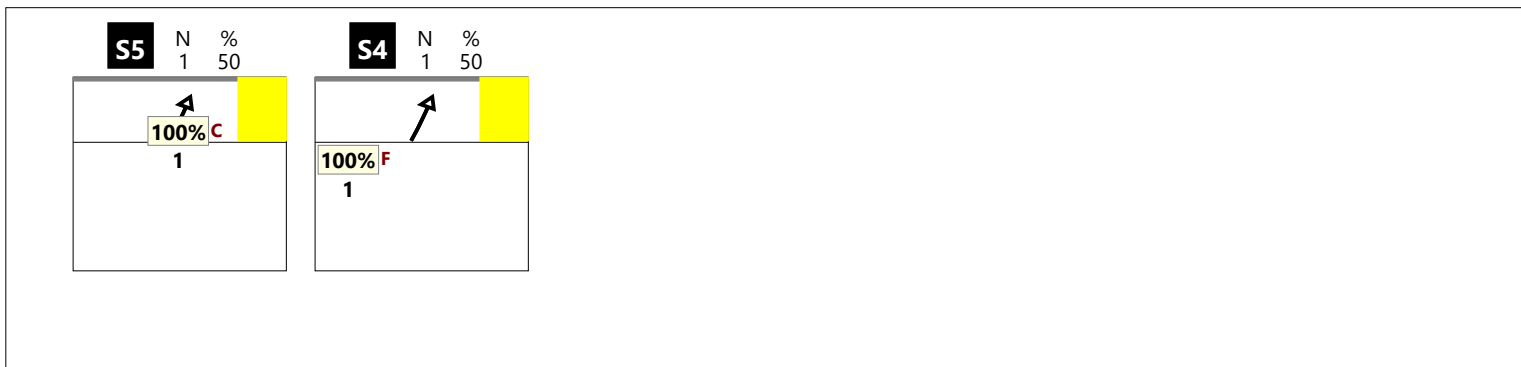
--

RICEZIONE + CHIAMATA 7 centro rete (KX + KJ)

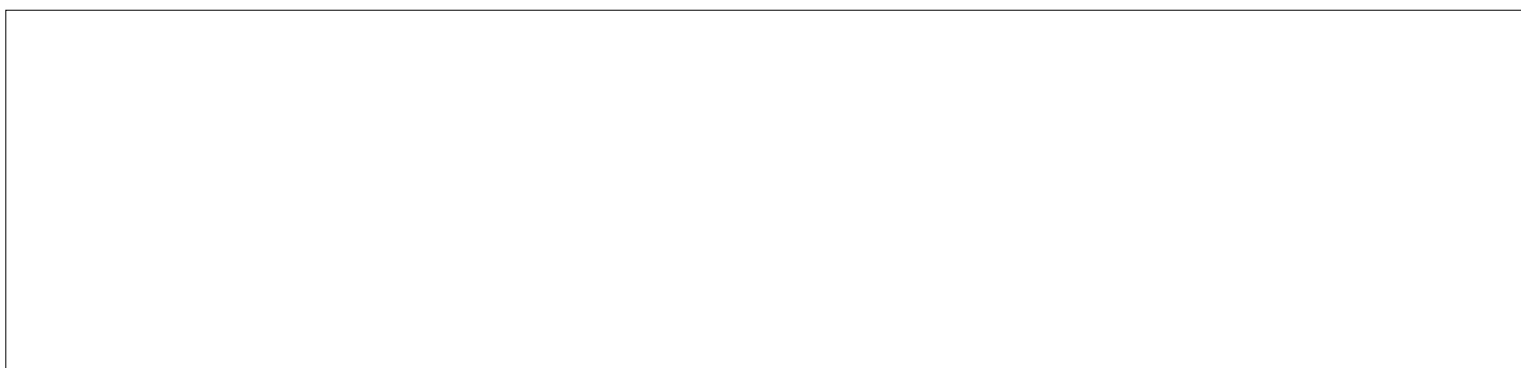
--

--

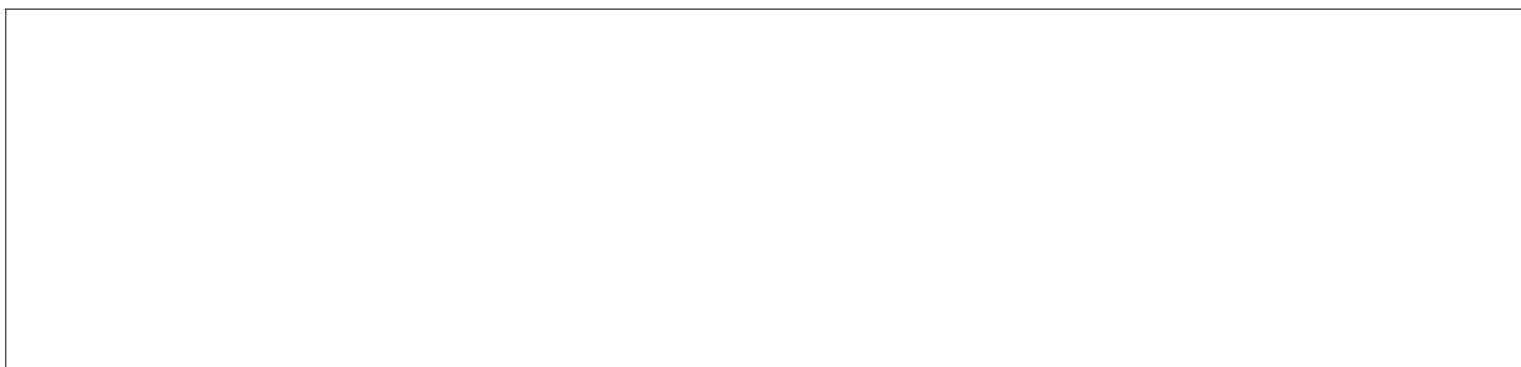
RICEZIONE TOTALE CHIAMATA KC



RICEZIONE # CHIAMATA KC



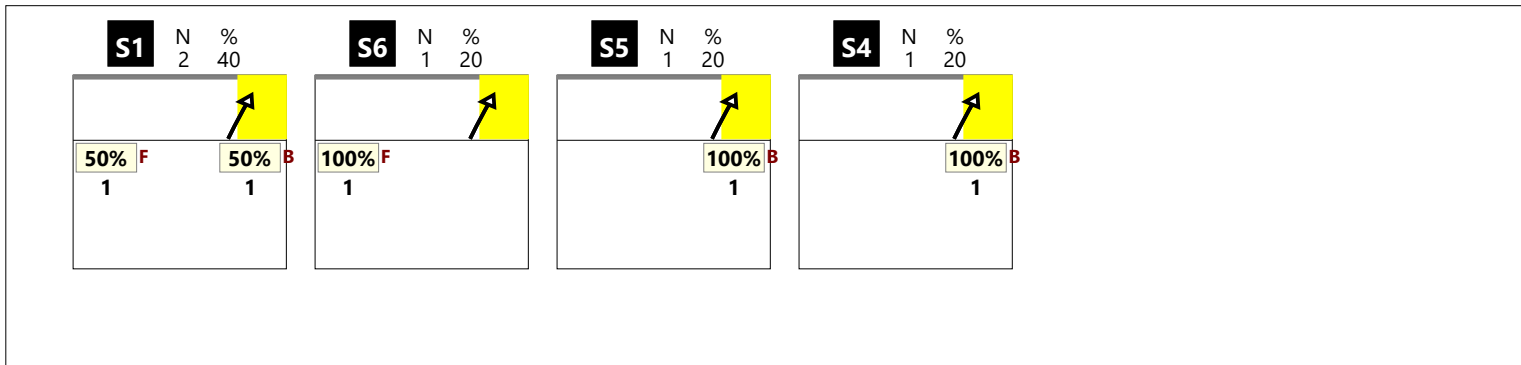
RICEZIONE + CHIAMATA KC



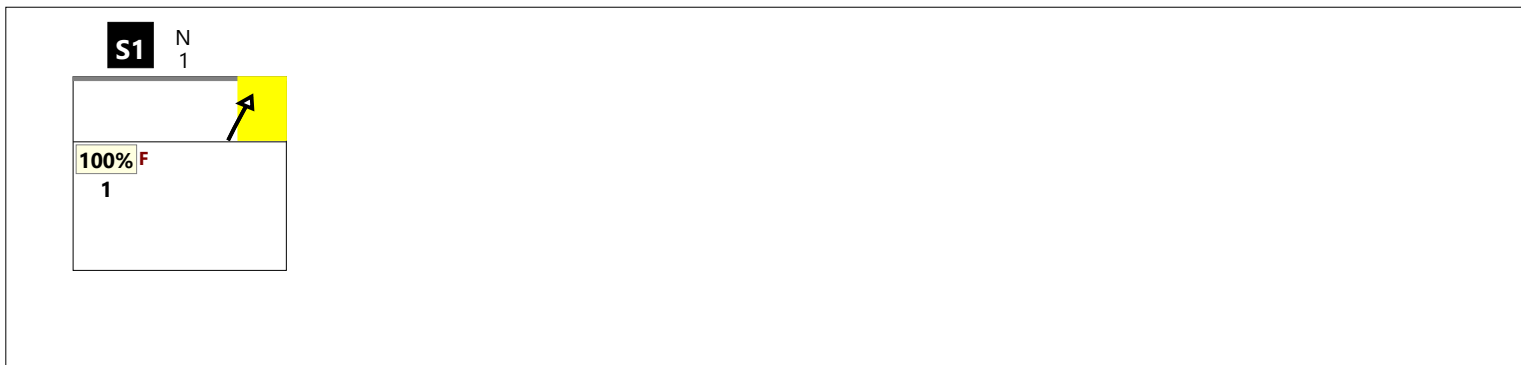
RICEZIONE ! CHIAMATA KC



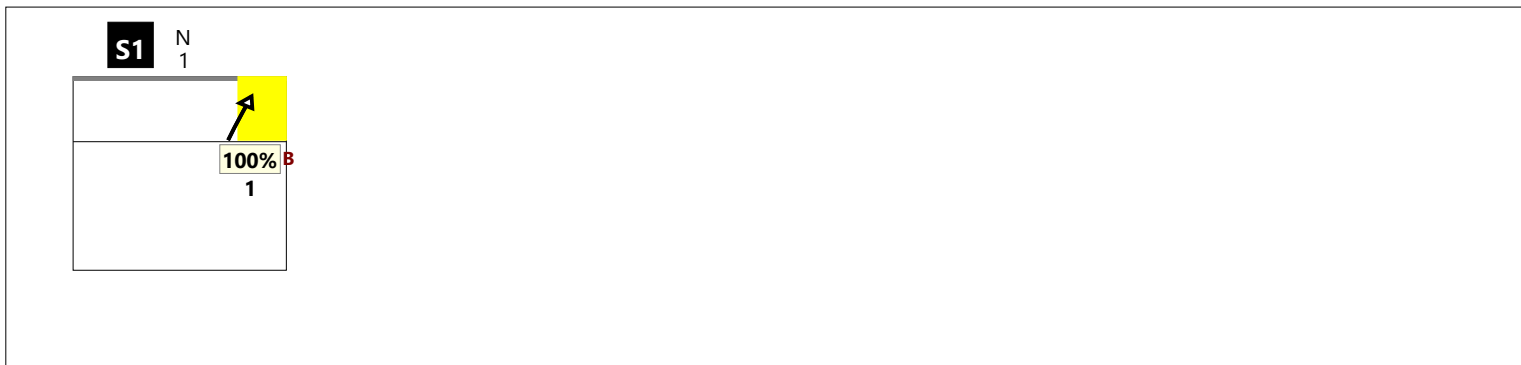
RICEZIONE TOTALE CHIAMATA KM



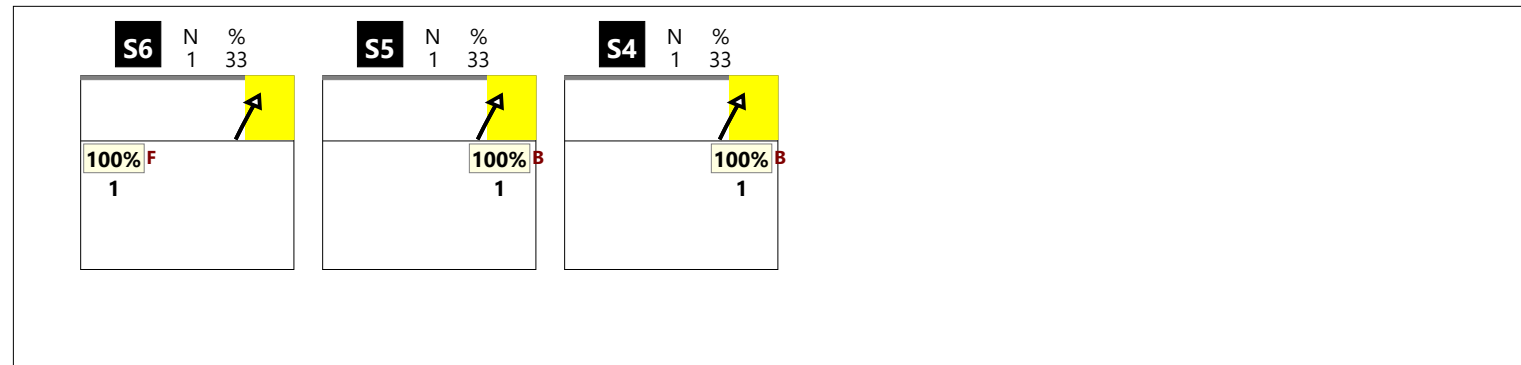
RICEZIONE # CHIAMATA KM



RICEZIONE + CHIAMATA KM



RICEZIONE ! CHIAMATA KM



RICEZIONE TOTALE CHIAMATA KA

--

RICEZIONE # CHIAMATA KA

--

RICEZIONE + CHIAMATA KA

--

RICEZIONE ! CHIAMATA KA

--

RICEZIONE TOTALE CHIAMATA KP

--

RICEZIONE # CHIAMATA KP

--

RICEZIONE + CHIAMATA KP

--

RICEZIONE ! CHIAMATA KP

--

RICEZIONE TOTALE CHIAMATA KS

--

RICEZIONE # CHIAMATA KS

--

RICEZIONE + CHIAMATA KS

--

RICEZIONE ! CHIAMATA KS

--

RICEZIONE TOTALE CHIAMATA KQ

--

RICEZIONE # CHIAMATA KQ

--

RICEZIONE + CHIAMATA KQ

--

RICEZIONE ! CHIAMATA KQ

--

DISTRIBUZIONE PER ZONE DI RICEZIONE

RICEZIONE BUONA DA ZONA 1

4	33%	1	8%	3	25%
-50%	25%	100%	100%	33%	67%
				4	33%
				75%	75%

Total events Total events %
Efficiency % Events # in %

RICEZIONE BUONA DA ZONA 5

2	29%	3	43%		
50%	50%	67%	67%		
		2	29%		
		50%	50%		

Total events Total events %
Efficiency % Events # in %

RICEZIONE BUONA DA ZONA 6-1

Total events Total events %
Efficiency % Events # in %

RICEZIONE BUONA DA ZONA 5-6

Total events Total events %
Efficiency % Events # in %

TOTALE DA ZONA 1

4	33%	1	8%	3	25%
-50%	25%	100%	100%	33%	67%
				4	33%
				75%	75%

Total events Total events %
Efficiency % Events # in %

TOTALE DA ZONA 5

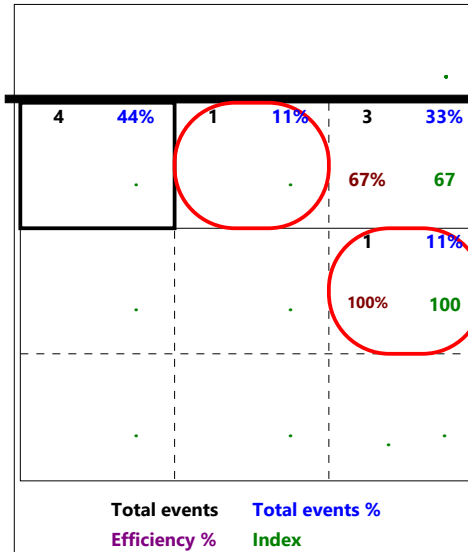
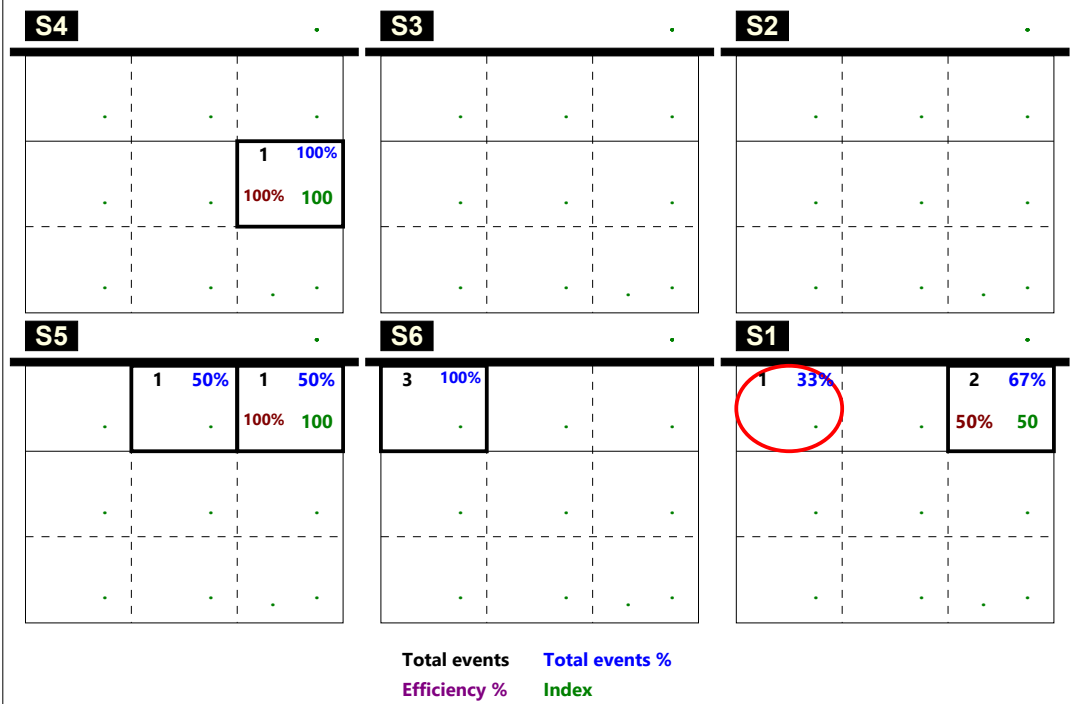
2	29%	3	43%		
50%	50%	67%	67%		
		2	29%		
		50%	50%		

Total events Total events %
Efficiency % Events # in %

DISTRIBUZIONE PER ZONE DI RICEZIONE

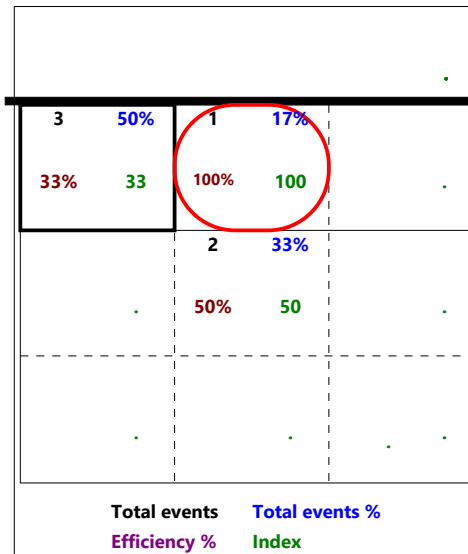
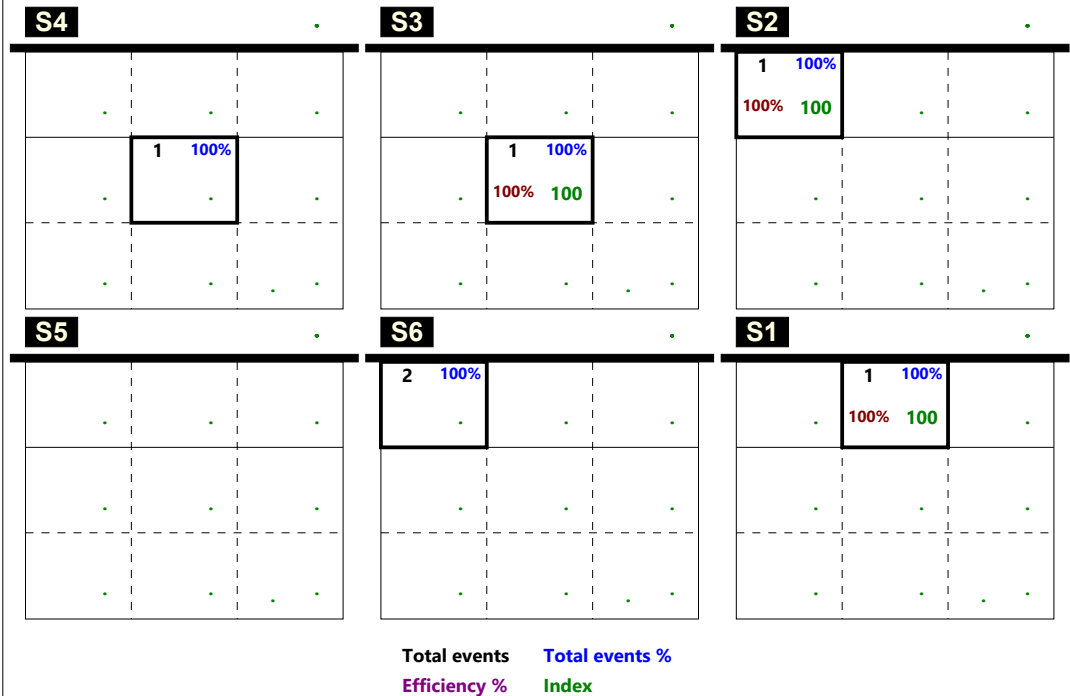
RICEZIONE ESCLAMATIVA IN ZONA 1

Total Zone Chart analysis



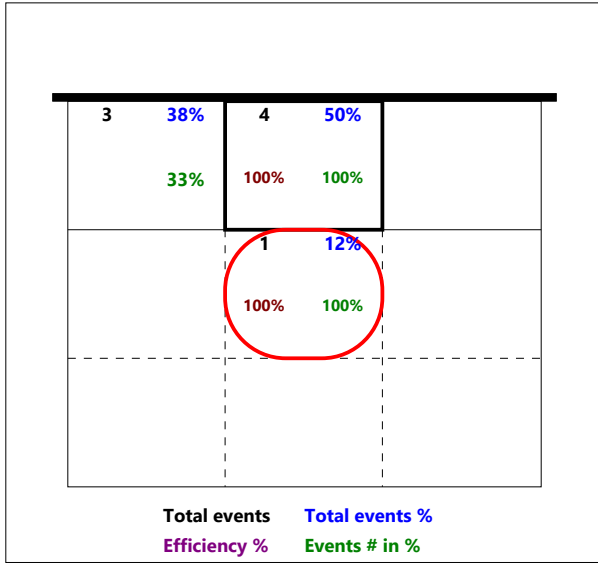
RICEZIONE ESCLAMATIVA IN ZONA 5

Total Zone Chart analysis

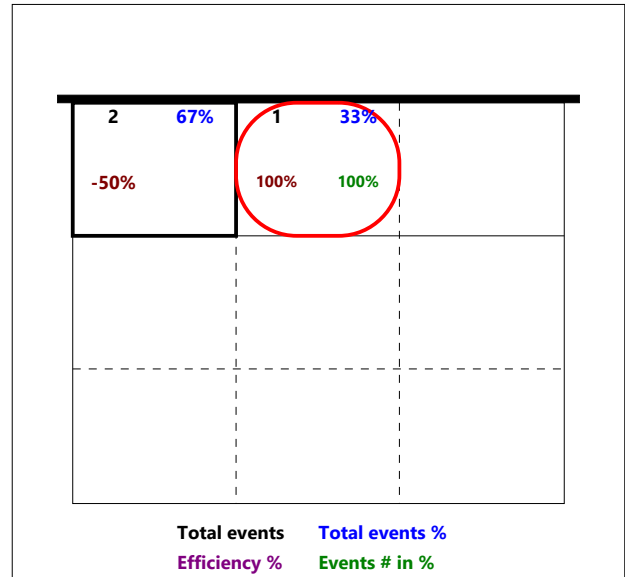


DISTRIBUZIONE PER ZONE DI RICEZIONE

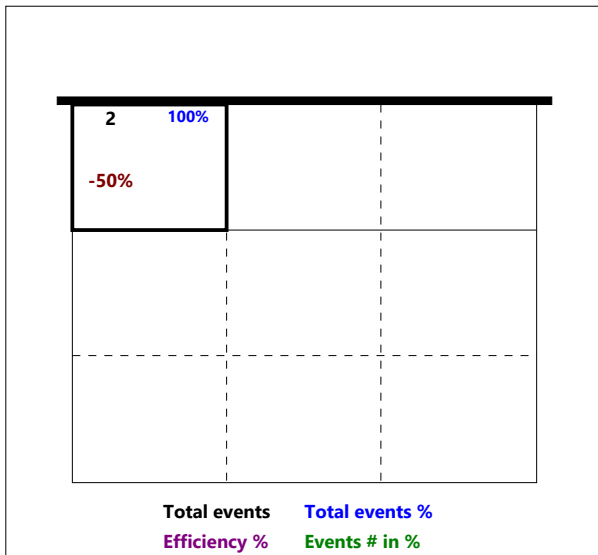
RICEZIONE BUONA DA ZONA 6



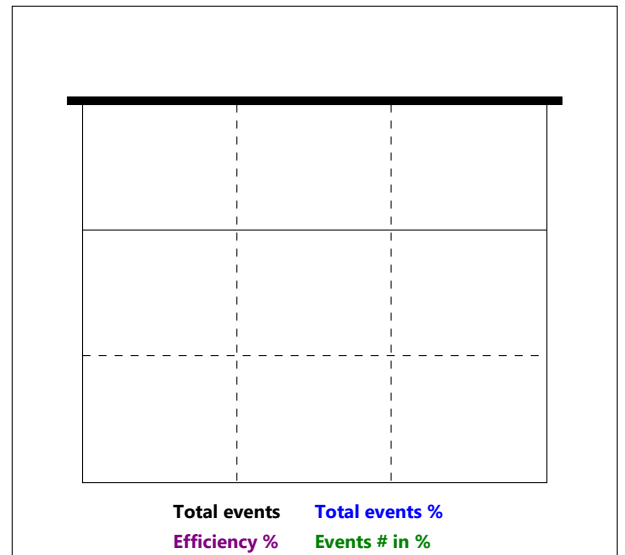
RICEZIONE CORTA TOTALE



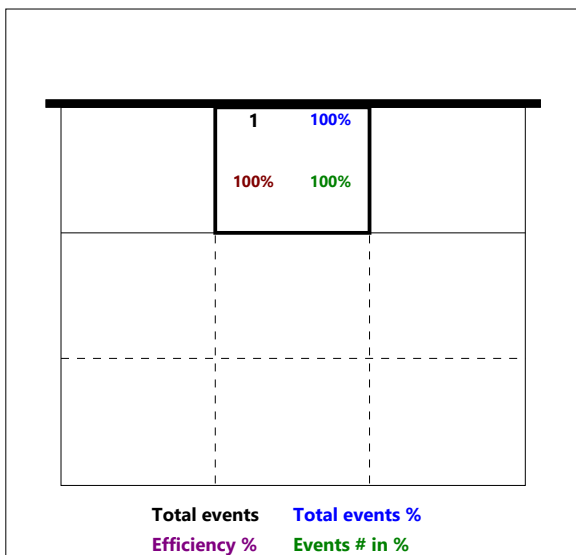
RICEZIONE CORTA Z2



RICEZIONE CORTA Z3



RICEZIONE CORTA Z4



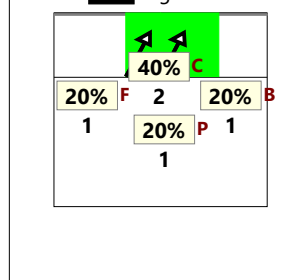
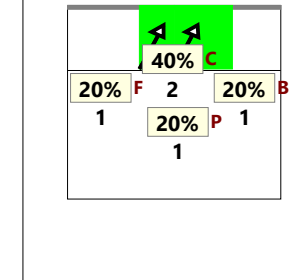
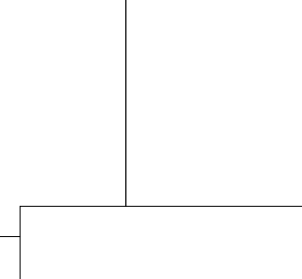
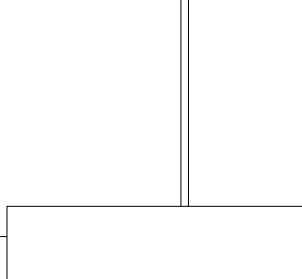
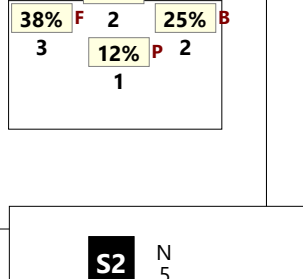
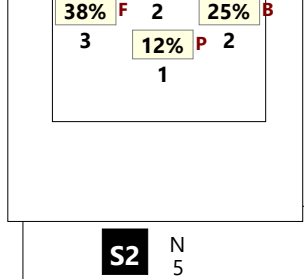
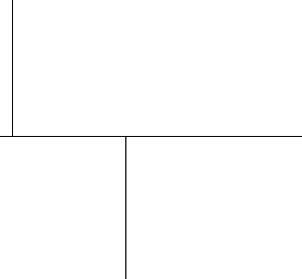
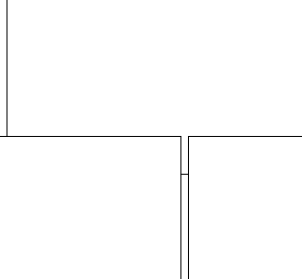
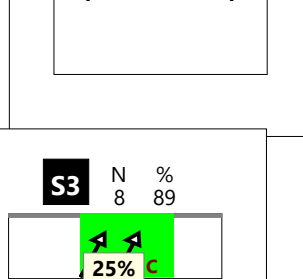
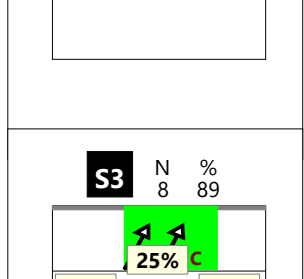
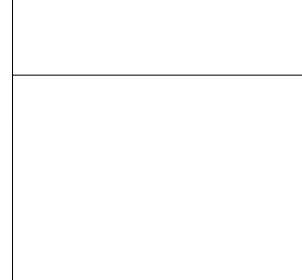
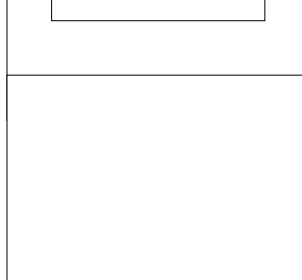
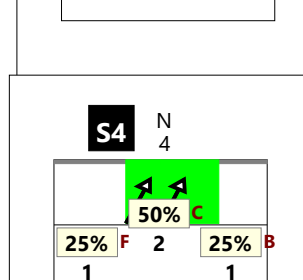
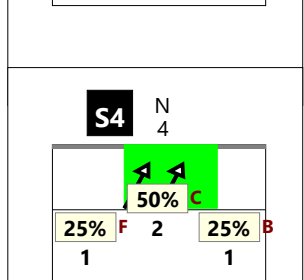
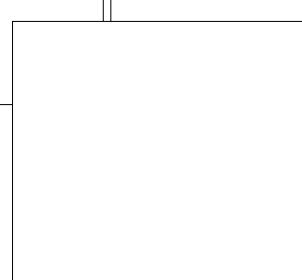
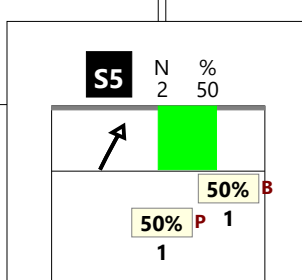
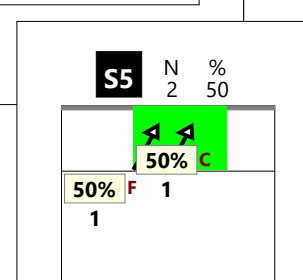
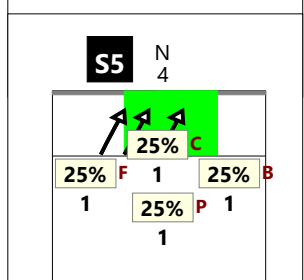
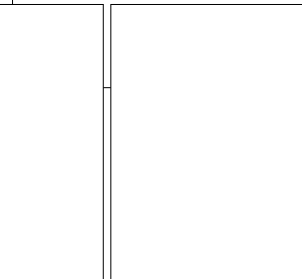
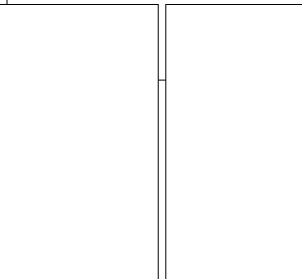
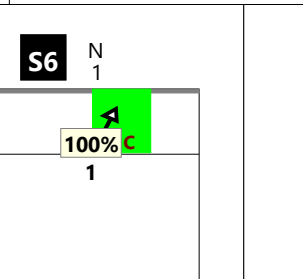
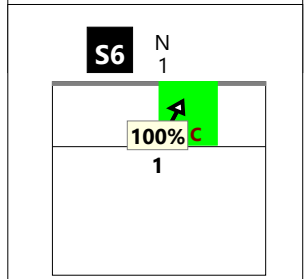
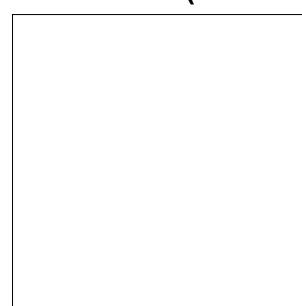
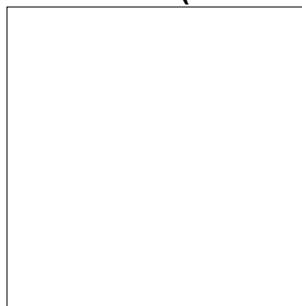
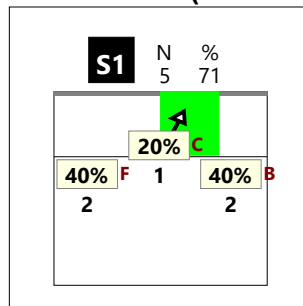
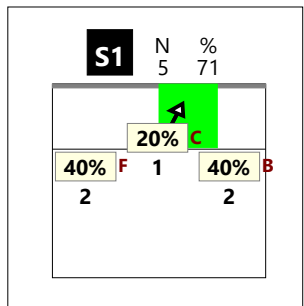
Total Print Composition - 44 - Distribuzione su ricezione regolare per rotazione

Totale

Chiamata 1 (K1 + KH)

Chiamata 7 (K7 + KX)

Chiamata 2 (K2 + KW)



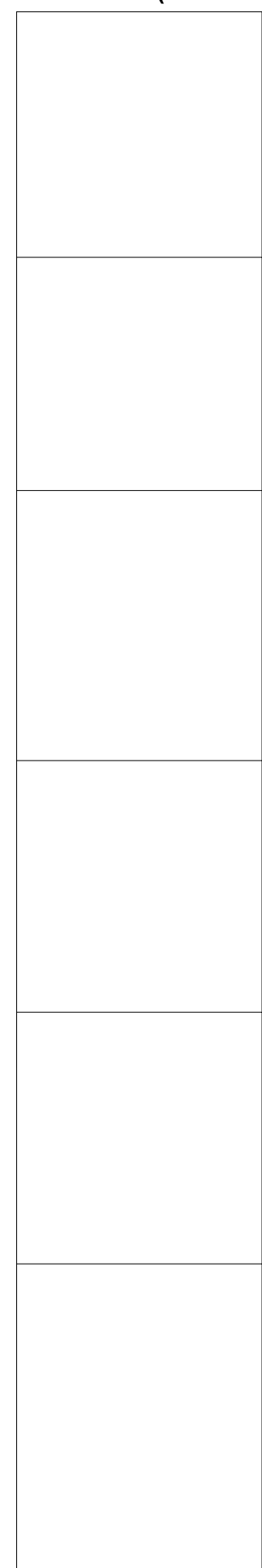
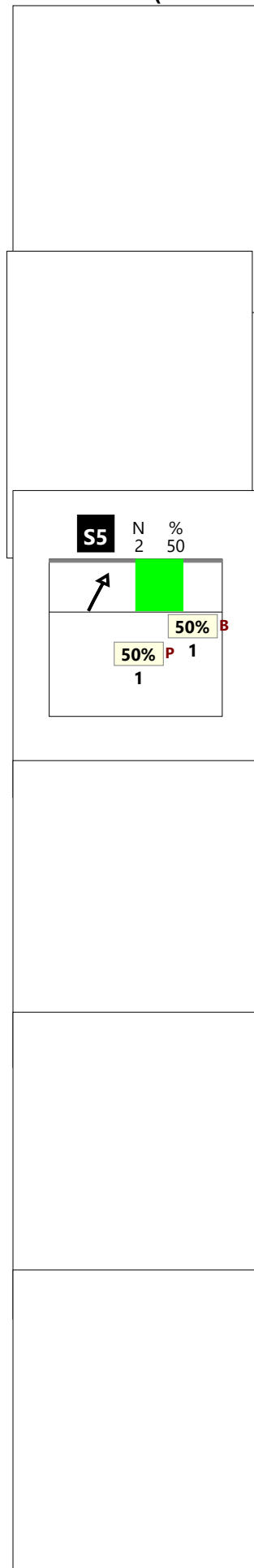
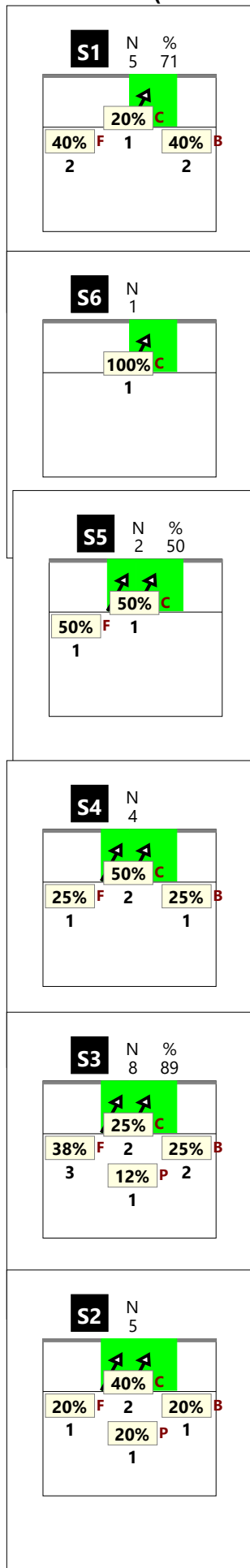
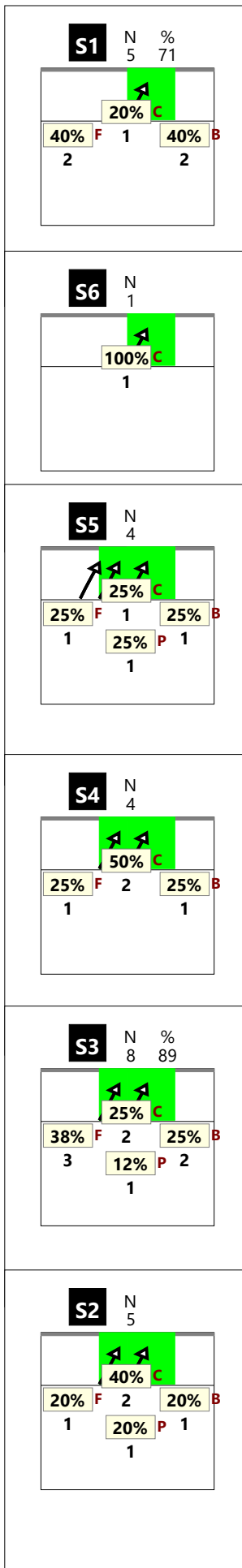
Total Print Composition - 45 - Distribuzione su ricezione buona per basi

Totale

Chiamata 1 (K1 + KH)

Chiamata 7 (K7 + KX)

Chiamata 2 (K2 + KW)



Distribuzione per zone di alzata

(cambio palla)

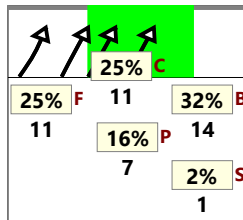
Total Setter calls distribution

Estonia 2016 | 13 TOOBAL | Set | K.

Total Setter calls distribution

Estonia 2016 | 13 TOOBAL | Set | K.

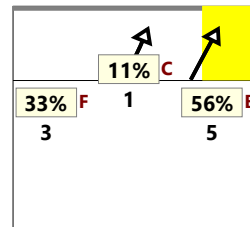
N %
44 48



Total Setter calls distribution

Estonia 2016 | 13 TOOBAL | Set | K.

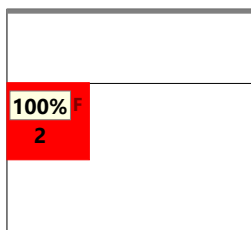
N %
9 10



Total Setter calls distribution

Estonia 2016 | 13 TOOBAL | Set | KF

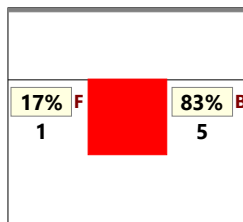
N %
2 2



Total Setter calls distribution

Estonia 2016 | 13 TOOBAL | Set | K.

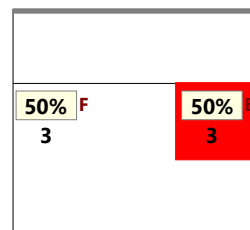
N %
6 7



Total Setter calls distribution

Estonia 2016 | 13 TOOBAL | Set | KO

N %
6 7

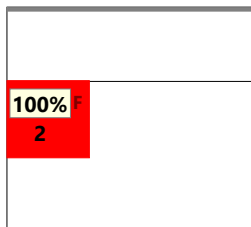


*solo zona centrale

Total Setter calls distribution

Estonia 2016 | 13 TOOBAL | Set | K.

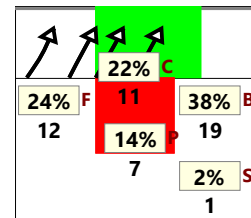
N %
2 2



Total Setter calls distribution

Estonia 2016 | 13 TOOBAL | Set | K.

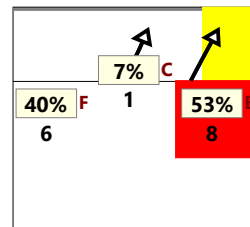
N %
50 55



Total Setter calls distribution

Estonia 2016 | 13 TOOBAL | Set | K.

N %
15 16



*solo zona centrale

Total Print Composition - 47 - Distribuzione per ruolo del ricettore

Total Zone Chart analysis

S4	S3	S2
S5	S6	S1

Total events Total events % Efficiency % Events # in %		
Ricezione buona del martello 1^ linea		

Total Zone Chart analysis

S4	S3	S2
S5	S6	S1

Total events Total events % Efficiency % Events # in %		
Ricezione buona del martello 2^ linea		

Total Zone Chart analysis

S4	S3	S2
S5	S6	S1

Total events Total events % Efficiency % Events # in %		
Ricezione buona del centrale		

Total events Total events %
 Efficiency % Events # in %

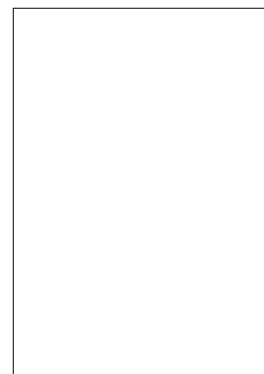
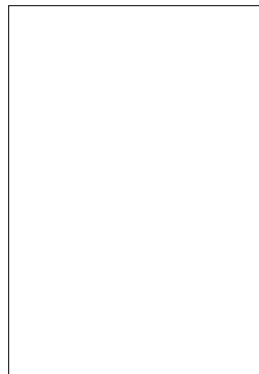
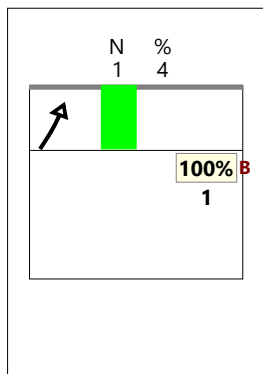
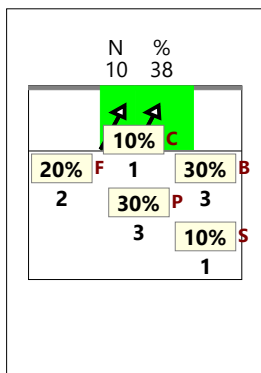
Total Print Composition - 48 - Distribuzione in contrattacco

Chiamata 1 (K1 + KH)

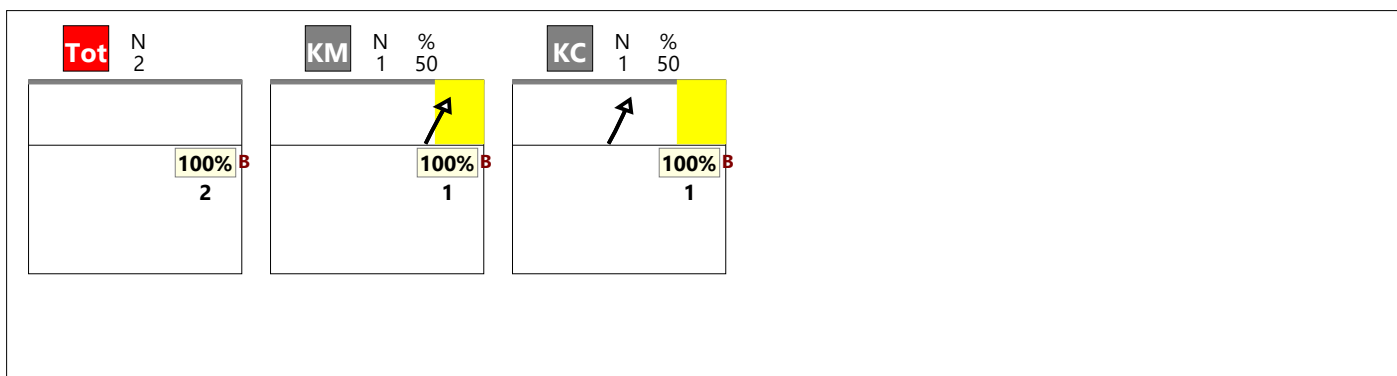
Chiamata 7 (K7 + KX)

Chiamata 2 (K2 + KW)

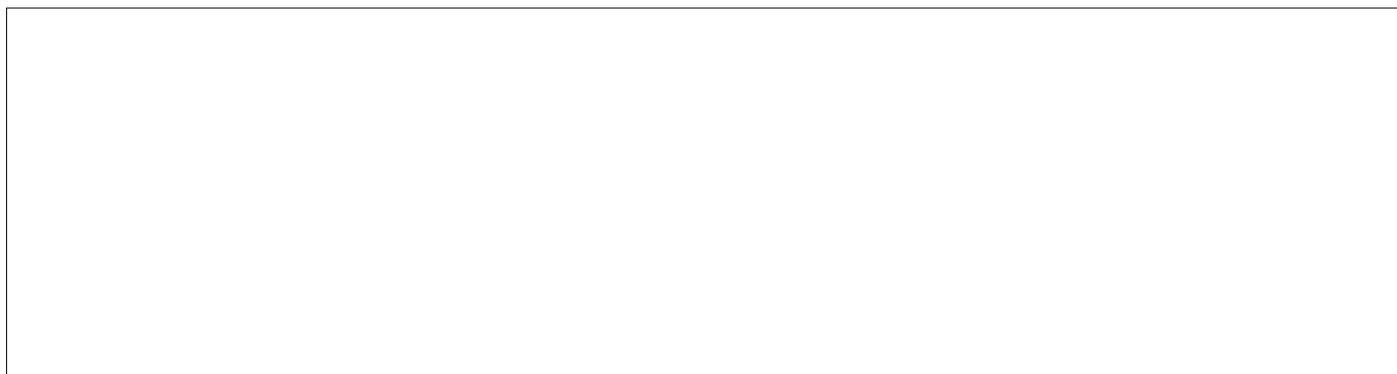
Chiamata CC (KD + KJ)



Verso 2



Verso 4



Staccata

