

S in 5

Total Zone Chart analysis

KOREA 2014 | Atk after Rec | Setter in 5 | OR[*~~R~#,1][*~

S5

3	13%	11	48%	7	30%
2	67%	7	64%	4	57%
Jeon: 3		Choi: 8 Park: 3		Park: 6 Kim: 1	

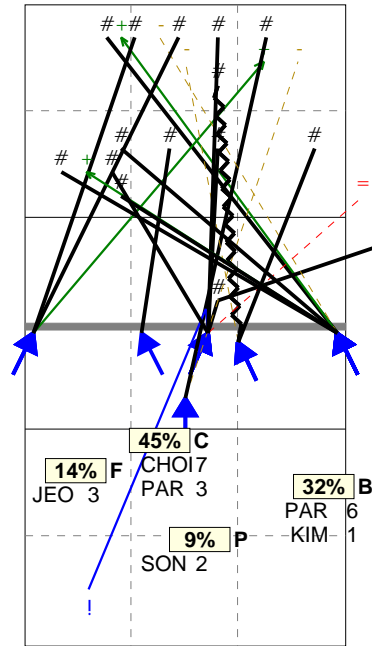
2	9%
1	50%
Song: 2	

Total events Total events %
Events # Events # in %

Total Direction Chart analysis

KOREA 2014 | Atk after Rec | Setter in 5 | OR[*~~R~#,1][*~~R~+,1]:::[6]

S5 Ind. *E% N # #% = /
8 59% 22 14 64% 1 0



H: 95%(21) P: 5%(1) T: (0)

Total Analysis by Players

KOREA 2014 | Player detail | Reception | Setter in 5 | :::[6]

Player	Skill	Type	S	Set	Ind	*E%	Tot	=	%	BP	pS	/	%	BP	pS	-	%	!	%	+	%	#	%	BP	pS	
Team	Reception		5		4	50%	46	2	4%	2	9	20%	12	26%	8	17%	15	33%	.	.
1 SONG					4	45%	22	1	5%	1	5	23%	6	27%	5	23%	5	23%	.	.
9 KWAK					7	67%	3	1	33%	.	.	2	67%	.	.	
10 BU					3	33%	3	1	33%	1	33%	.	.	1	33%	.	.
12 JEON					10	100%	2	2	100%	.	.	
14 LEE					4	47%	15	1	7%	1	3	20%	4	27%	3	20%	4	27%	.	.
15 KIM					10	100%	1	1	100%	.	.	

Total Zone Chart analysis

KOREA 2014 | Transition | Setter in 5 | AND[*~~D~#,7][~~~

S5

9	64%	2	14%	2	14%
5	56%	2	100%		
Jeon: 9		Choi: 2		Park: 2	

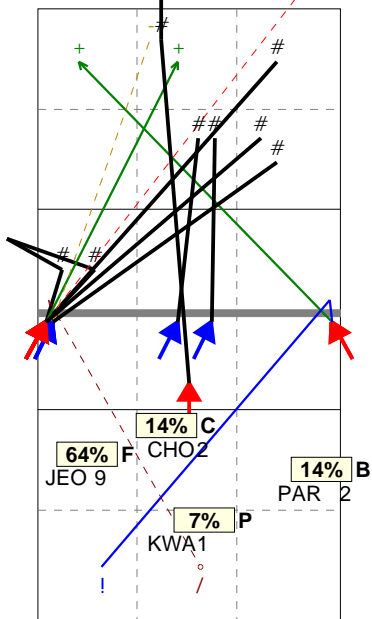
1	7%
1	100%
Kwak: 1	

Total events Total events %
Events # Events # in %

Total Direction Chart analysis

KOREA 2014 | Transition | Setter in 5 | AND[*~~D~#,7][~~~AO~V3~3,6][~~

S5 Ind. *E% N # #% = /
7 43% 14 8 57% 1 1



H: 100%(14) P: (0) T: (0)