

S in 4

Total Zone Chart analysis

KOREA 2014 | Atk after Rec | Setter in 4 | OR[*~R~#,#,1][*~

S4

7	25%	10	36%	
5	71%	8	80%	
Jeon: 7		Choi: 8 Park: 2		
		2	7%	9
		1	50%	4
		Song: 2		Park: 9

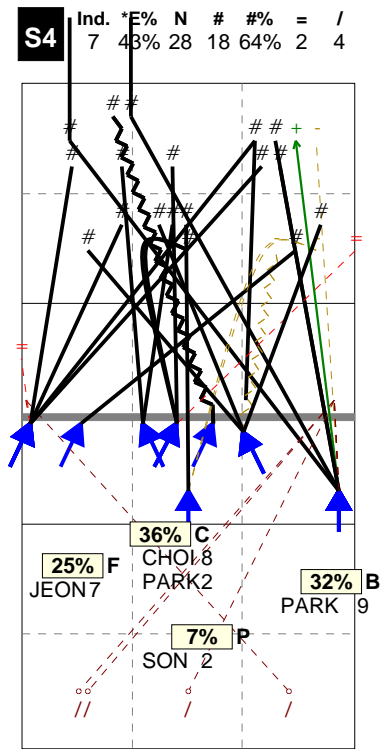
Total events Total events %
Events # Events # in %

KOREA 2014 | Player detail | Reception | Setter in 4 | ;;;[6]

Player	Skill	Type	S	Set	Ind	*E%	Tot	=	%	BP	pS	/	%	BP	pS	-	%	!	%	+	%	#	%	BP	pS	
Team	Reception		4		4	55%	51	3	6%	3	8	16%	12	24%	16	31%	12	24%	.	.
1 SONG					3	44%	18	1	6%	1	4	22%	5	28%	4	22%	4	22%	.	.
9 KWAK					5	62%	8	1	12%	2	25%	2	25%	3	38%	.	.
10 BU					4	56%	9	1	11%	1	1	11%	2	22%	2	22%	3	33%	.	.
11 CHOI					5	67%	3	1	33%	2	67%
12 JEON					2	25%	4	2	50%	1	25%	.	.	1	25%	.	.
14 LEE					5	78%	9	1	11%	1	1	11%	6	67%	1	11%	.	.

Total Direction Chart analysis

KOREA 2014 | Atk after Rec | Setter in 4 | OR[*~R~#,#,1][*~R~+,1];;[6]



H: 86%(24) P: 7%(2) T: 7%(2)

Total Zone Chart analysis

KOREA 2014 | Transition | Setter in 4 | AND[*~D~#,#,7][~--

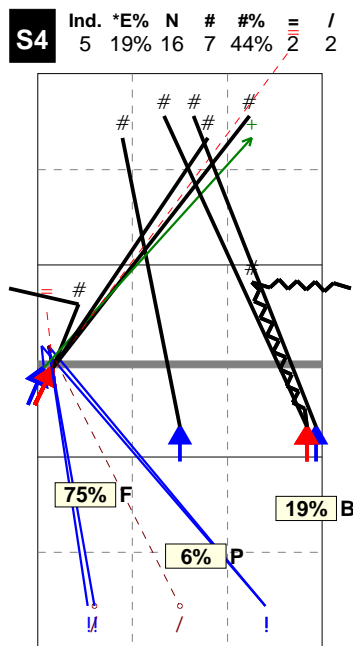
S4

12	75%			
3	25%			
Jeon: 12		Park: 2 Kim: 1		
		1	6%	3
		1	100%	3
		Song: 1		

Total events Total events %
Events # Events # in %

Total Direction Chart analysis

KOREA 2014 | Transition | Setter in 4 | AND[*~D~#,#,7][~--AO~V3~3,6][~--



H: 88%(14) P: 12%(2) T: (0)