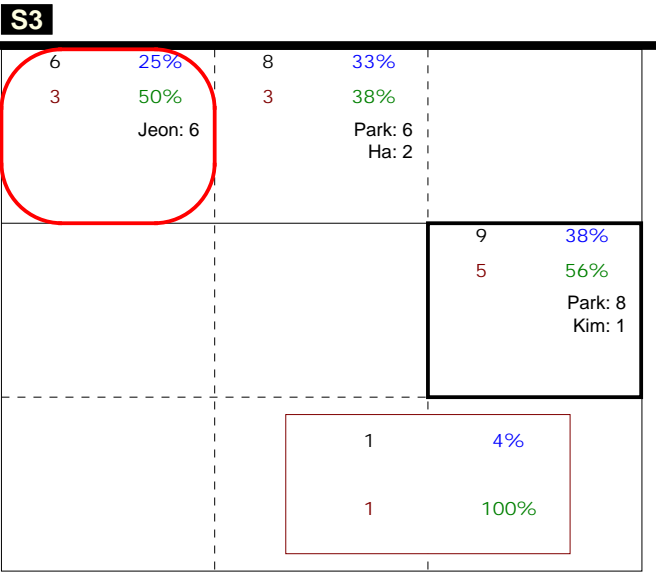


S in 3

Total Zone Chart analysis

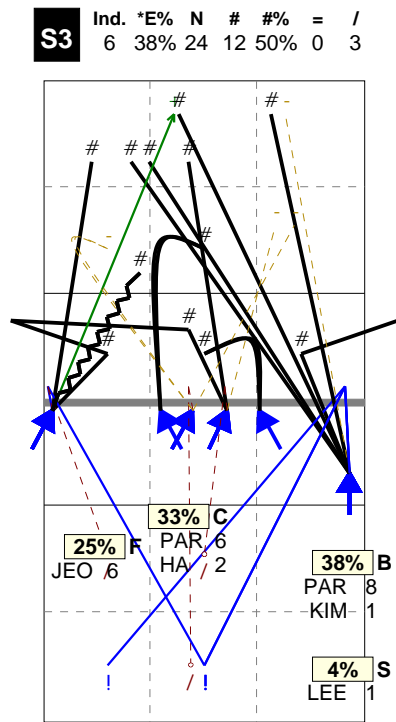
KOREA 2014 | Atk after Rec | Setter in 3 | OR[*~~R~#,1][*~



Total events Total events %
Events # Events # in %

Total Direction Chart analysis

KOREA 2014 | Atk after Rec | Setter in 3 | OR[*~~R~#,1][*~~R~+,1]:::[6]

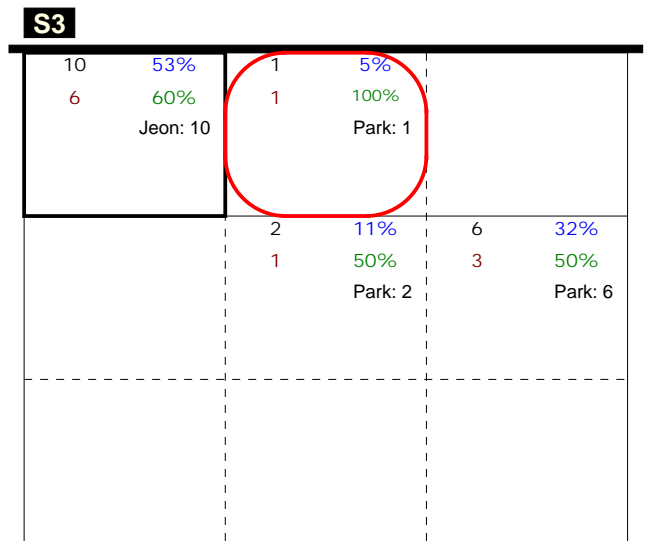


H: 83%(20) P: 4%(1) T: 12%(3)

Player	Skill	Type	S	Set	Ind	*E%	Tot	=	%	BP	pS	/	%	BP	pS	-	%	!	%	+	%	#	%	BP	pS
Team	Reception		3		3	49%	51	4	8%	4	.	2	4%	2	.	8	16%	12	24%	18	35%	7	14%	.	.
1 SONG					2	41%	22	2	9%	2	.	1	5%	1	.	4	18%	6	27%	8	36%	1	5%	.	.
8 PARK					2	100%	2	1	50%	1	50%	.	.
9 KWAK					5	60%	10	1	10%	1	.	2	20%	1	10%	3	30%	3	30%	.	.
10 BU					5	67%	6	1	17%	1	1	17%	3	50%	1	17%	.	.
12 JEON					3	50%	8	1	12%	1	1	12%	2	25%	3	38%	1	12%	.	.
14 LEE					.	.	3	1	33%	2	67%

Total Zone Chart analysis

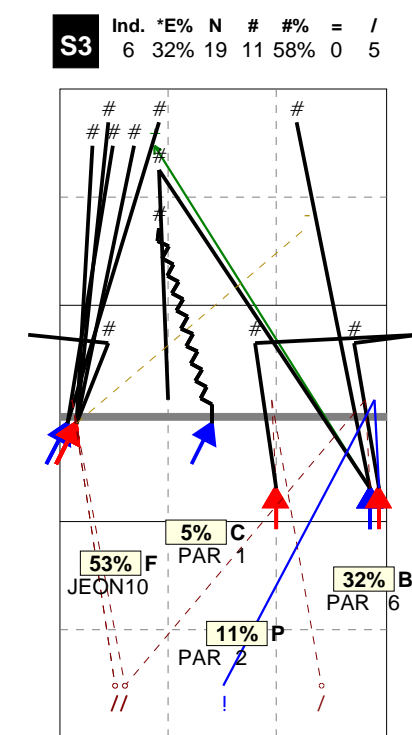
KOREA 2014 | Transition | Setter in 3 | AND[*~~D~#,7][~~~



Total events Total events %
Events # Events # in %

Total Direction Chart analysis

KOREA 2014 | Transition | Setter in 3 | AND[*~~D~#,7][~~~AO~PR~3,6][~~~A



H: 95%(18) P: 5%(1) T: (0)