

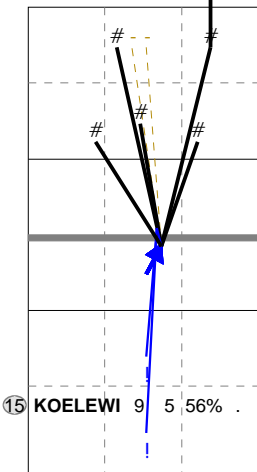
Total Direction Chart analysis

NETHERLANDS 2014 | 15 KOELEWIJN | Atk after Rec | Setter in 1,5,4,2

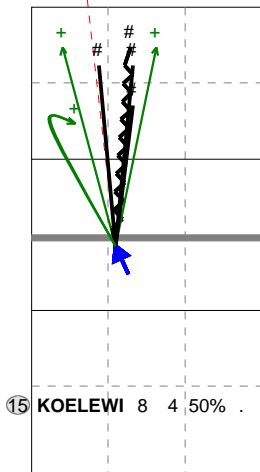
X1 Ind. \*E% N # #% = / 7 56% 9 5 56% 0 / 0

X7 Ind. \*E% N # #% = / 7 38% 8 4 50% 1 / 0

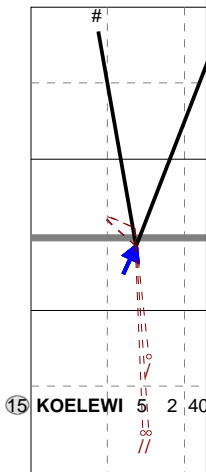
XC Ind. \*E% N # #% = / 4 -20 5 2 40



H: 100%(9) P: (0) T: (0)



H: 75%(6) P: 12%(1) T: 12%(1)

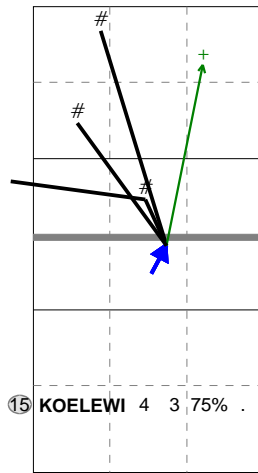


H: 80%(4) P: (0) T: 20

Total Direction Chart analysis

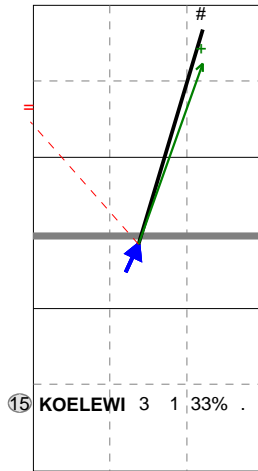
NETHERLANDS 2014 | 15 KOELEWIJN | Atk after Rec

X1 Ind. \*E% N # #% = / 9 75% 4 3 75% 0 / 0



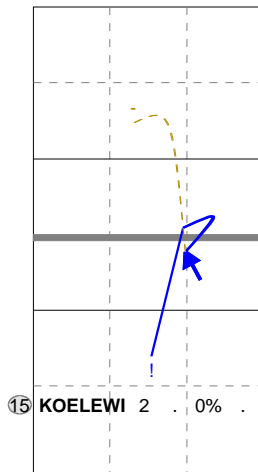
H: 100%(4) P: (0) T: (0)

XC Ind. \*E% N # #% = / 5 . 3 1 33% 1 / 0



H: 100%(3) P: (0) T: (0)

X2 Ind. \*E% N # #% = / 2 . 2 0 0% 0 / 0



H: (0) P: (0) T: 100%(2)

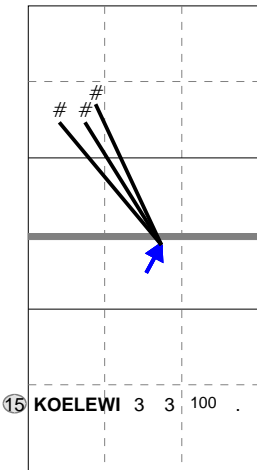
Total Direction Chart analysis

NETHERLANDS 2014 | 15 KOELEWIJN | Transition | AND[\*~~AO,6] | (XF,X2,X1,XM,

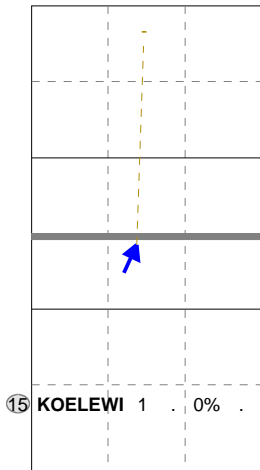
X1 Ind. \*E% N # #% = / 10 100 3 3 100 0 / 0

XC Ind. \*E% N # #% = / 5 . 1 0 0% 0 / 0

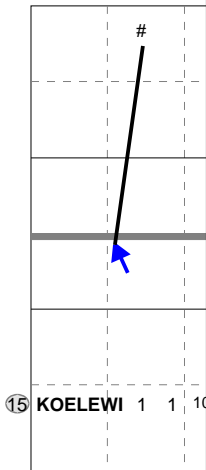
X7 Ind. \*E% N # #% = / 10 100 1 1 10



H: 100%(3) P: (0) T: (0)



H: 100%(1) P: (0) T: (0)



H: 100%(1) P: (0)

Ind. \*E% N # #% = / 3 28% 25 2 8% 0 / 0

Ind. \*E% N # #% = / 3 36% 11 0 0% 0 / 0

Ind. \*E% N # #% = / 5 50% 10 2 20% 2 / 0

