

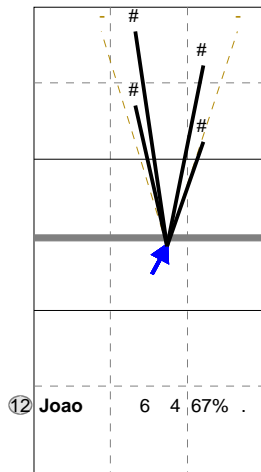
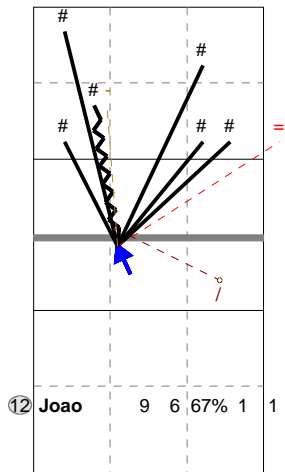
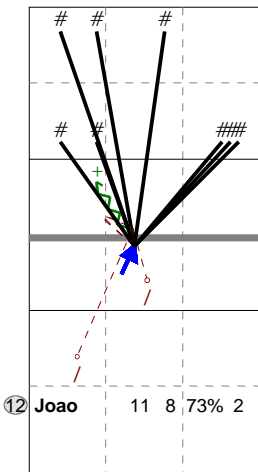
Total Direction Chart analysis

PORTUGAL 2014 | 12 Joao | Atk after Rec | Setter in 1,5,4,2 | :::[17]

XC	Ind.	*E%	N	#	##	=	/
	8	55%	11	8	73%	0	2

X7	Ind.	*E%	N	#	##	=	/
	7	44%	9	6	67%	1	1

X1	Ind.	*E%	N	#	##	=	/
	8	67%	6	4	67%	0	0



H: 73%(8) P: 18%(2) T: 9%(1)

H: 78%(7) P: 22%(2) T: (0)

H: 100%(6) P: (0) T: (0)

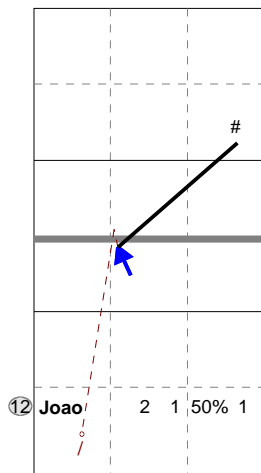
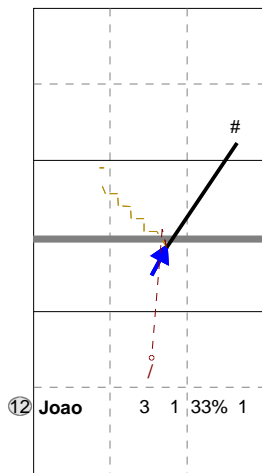
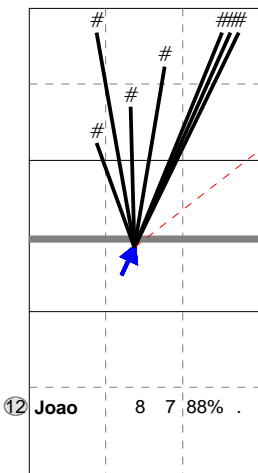
Total Direction Chart analysis

PORTUGAL 2014 | 12 Joao | Transition | AND[*~~AO,6]:::[17] | (XF,X2,X1,XM,XG,XC,XD,X7,PP,X9,XT,X3,X4

XC	Ind.	*E%	N	#	##	=	/
	9	75%	8	7	88%	1	0

X1	Ind.	*E%	N	#	##	=	/
	5	.	3	1	33%	0	1

X7	Ind.	*E%	N	#	##	=	/
	5	.	2	1	50%	0	1



H: 100%(8) P: (0) T: (0)

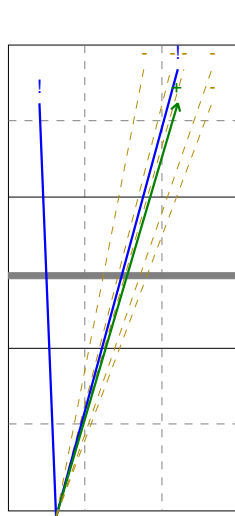
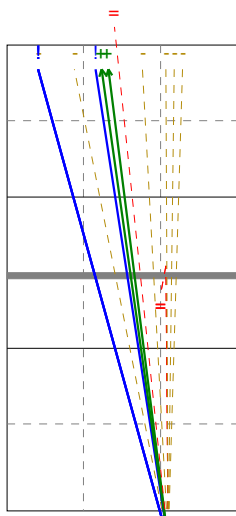
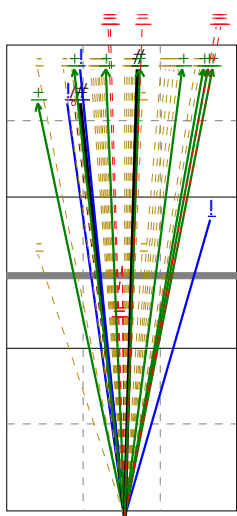
H: 33%(1) P: 67%(2) T: (0)

H: 100%(2) P: (0) T: (0)

Ind.	*E%	N	=	##	/
4	29%	48	8	17%	2 1

Ind.	*E%	N	=	##	/
3	40%	15	3	20%	0 0

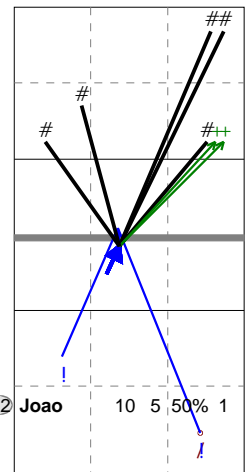
Ind.	*E%	N	=	##	/
3	38%	8	0	0%	0 0



Total Direction Chart analysis

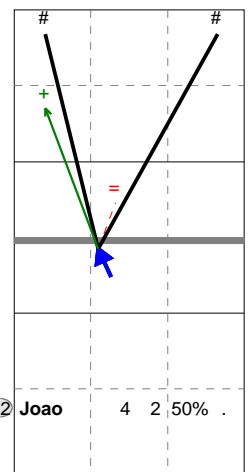
PORTUGAL 2014 | 12 Joao |

XC	Ind.	*E%	N	#	##	=	/
	6	40%	10	5	50%	0	1



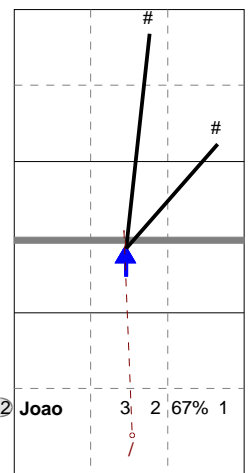
H: 100%(10) P: (0) T: (0)

X7	Ind.	*E%	N	#	##	=	/
	6	25%	4	2	50%	1	0



H: 100%(4) P: (0) T: (0)

XM	Ind.	*E%	N	#	##	=	/
	7	33%	3	2	67%	0	1



H: 100%(3) P: (0) T: (0)