

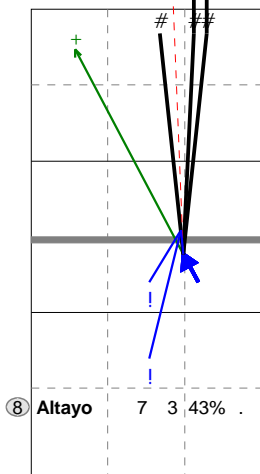
Total Direction Chart analysis

Espa a | 8 Altayo | Atk after Rec | Setter in 1,5,4,2 | :::[1]

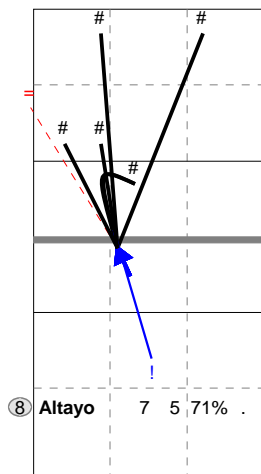
X2	Ind.	*E%	N	#	#%	=	/
	5	29%	7	3	43%	1	0

X7	Ind.	*E%	N	#	#%	=	/
	7	57%	7	5	71%	1	0

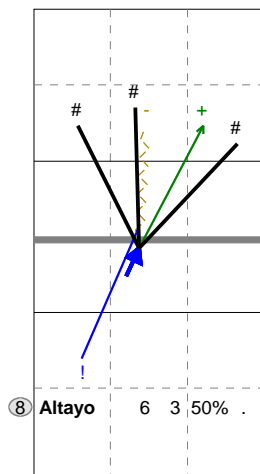
XC	Ind.	*E%	N	#	#%	=	/
	7	50%	6	3	50%	0	0



H: 86%(6) P: 14%(1) T: (0)



H: 86%(6) P: (0) T: 14%(1)

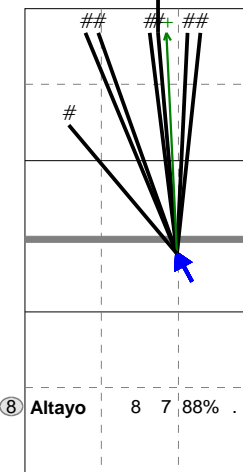


H: 83%(5) P: 17%(1) T: (0)

Total Direction Chart analysis

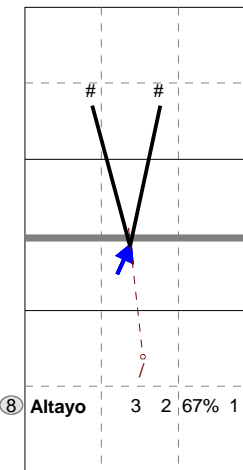
Espa a | 8 Altayo | Atk after Rec |

X2	Ind.	*E%	N	#	#%	=	/
	9	88%	8	7	88%	0	0



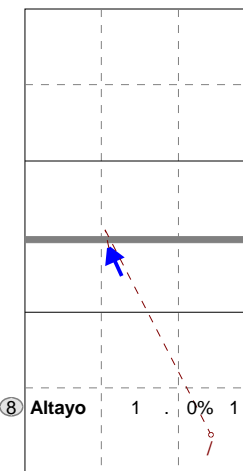
H: 100%(8) P: (0) T: (0)

XC	Ind.	*E%	N	#	#%	=	/
	7	33%	3	2	67%	0	1



H: 100%(3) P: (0) T: (0)

X7	Ind.	*E%	N	#	#%	=	/
	.	-100	1	0	0%	0	1



H: 100%(1) P: (0) T: (0)

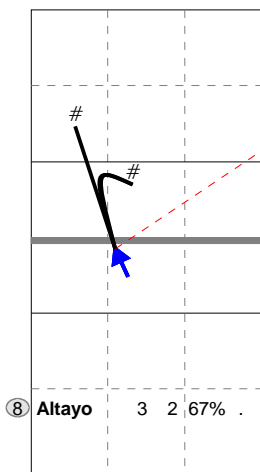
Total Direction Chart analysis

Espa a | 8 Altayo | Transition | AND[*~AO,6]:::[1] | (XF,X2,X1,XM,XG,XC,XD,X7,PP,X9,XT,X3,X4,XB,XP,XR

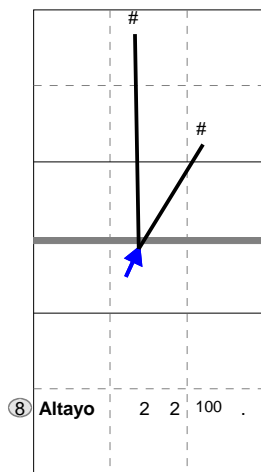
X7	Ind.	*E%	N	#	#%	=	/
	7	33%	3	2	67%	1	0

XC	Ind.	*E%	N	#	#%	=	/
	10	100	2	2	100	0	0

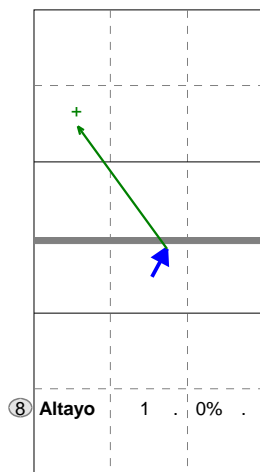
X1	Ind.	*E%	N	#	#%	=	/
	5	.	1	0	0%	0	0



H: 67%(2) P: (0) T: 33%(1)



H: 100%(2) P: (0) T: (0)



H: 100%(1) P: (0) T: (0)

Ind.	*E%	N	=	#	/
4	42%	76	6	8%	5 0

Ind.	*E%	N	=	#	/
4	40%	5	0	0%	0 0

Ind.	*E%	N	=	#	/
4	.	1	0	0%	0 0

