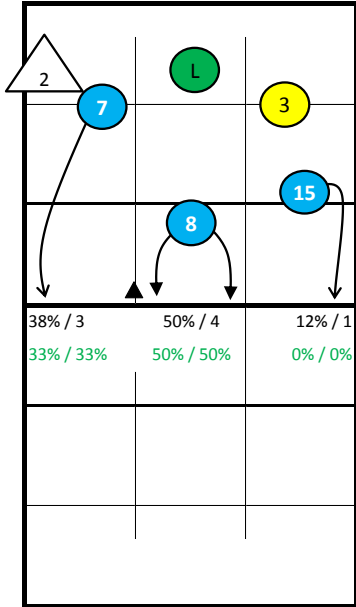
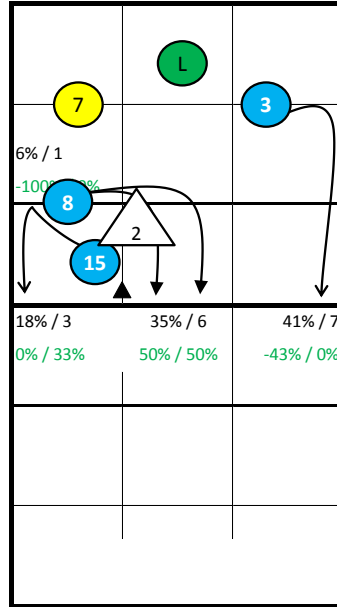


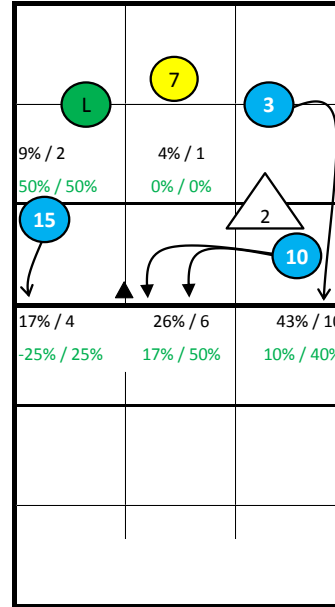
España -



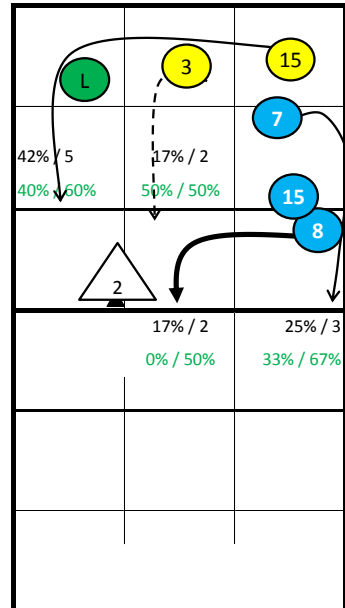
S1



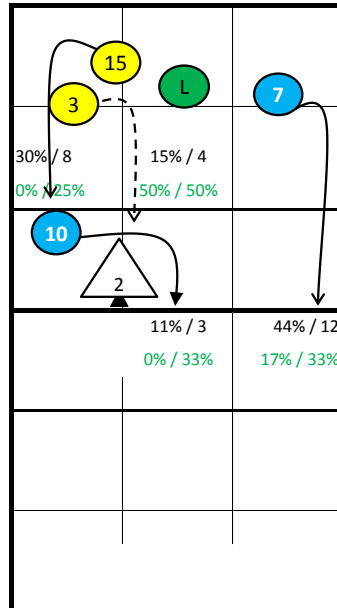
S6



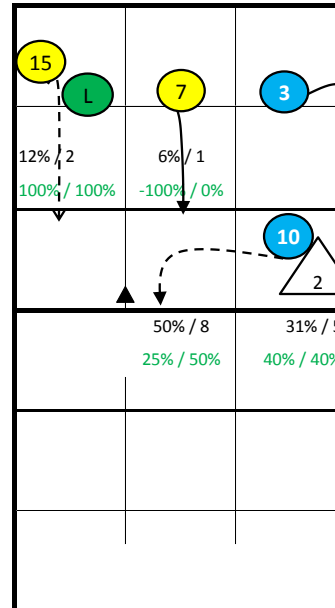
S5



S2



S3



S4

Notes:

España - all Statistics

pId	Points					Serve								Reception										Attack											
	Set	pts	P/s	easy=	all=	W-L	Σ	=	-	+	#	=%	#%	eff%	Σ	in %	=	/	-	+	#	=/%	+#%	#%	eff%	Σ	in %	=	/	!	+	#	=/%	#%	eff%
España	13	176	13,5	75	226	-50	252	51	98	80	23	20%	9%	41%	200		6	3	72	63	56	5%	60%	28%	55%	284		23	34	18	35	132	20%	46%	26%
1 G. Hernán	0	0				0								0												0									
2 Trinidad	13	6	0,5	11	26	-20	29	9	12	7	1	31%	3%	28%	0											8	3%	2	1	0	2	3	38%	38%	0%
3 Noda	9	25	2,8	10	31	-6	22	6	8	7	1	27%	5%	36%	62	31%	2	0	22	24	14	3%	62%	23%	58%	57	20%	4	7	6	7	23	19%	40%	21%
4 M. Sevillano	0	0				0								0												0									
5 Vigil	1	1	1,0			1	0							0												0									
7 Delgado	10	28	2,8	13	29	-1	25	8	10	5	2	32%	8%	28%	53	27%	0	0	18	15	20	0%	66%	38%	66%	48	17%	5	3	4	7	23	17%	48%	31%
8 Altayo	9	20	2,2	2	12	8	31	1	13	14	3	3%	10%	55%	0											24	8%	1	1	1	5	13	8%	54%	46%
10 Fernandez	13	27	2,1	7	30	-3	44	4	15	20	5	9%	11%	57%	1	1%	0	0	1	0	0	0%	0%	0%	0%	36	13%	2	5	4	5	15	19%	42%	22%
11 Gonzales	11	16	1,5	2	21	-5	36	1	22	12	1	3%	3%	36%	41	21%	3	0	11	13	14	7%	66%	34%	59%	24	8%	1	5	0	3	15	25%	62%	38%
12 Osorio	2	0				0								0												0									
15 Villena	13	45	3,5	23	47	-2	46	16	11	10	9	35%	20%	41%	0											77	27%	7	11	3	5	35	23%	45%	22%
17 RUIZ	6	0		3	4	-4	6	3	2	1	0	50%	0%	17%	1	1%	1	0	0	0	0	100%	0%	0%	-100%	0									

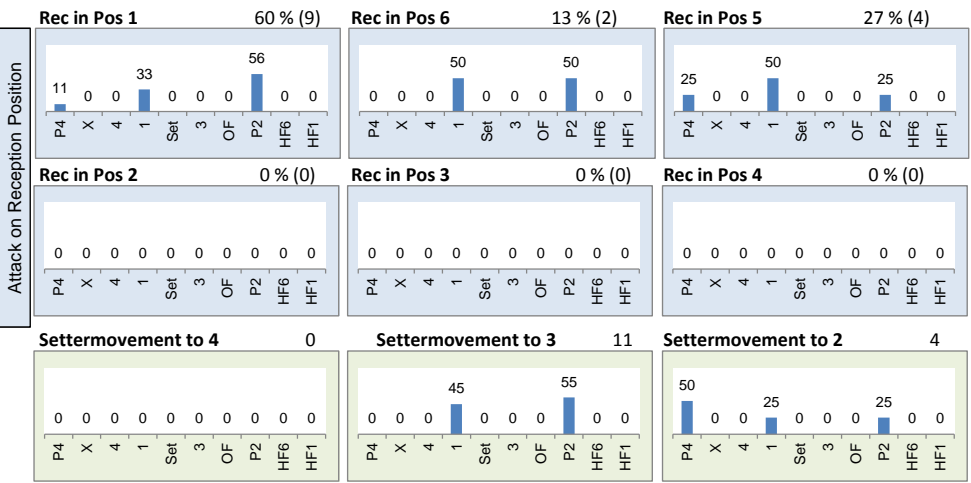
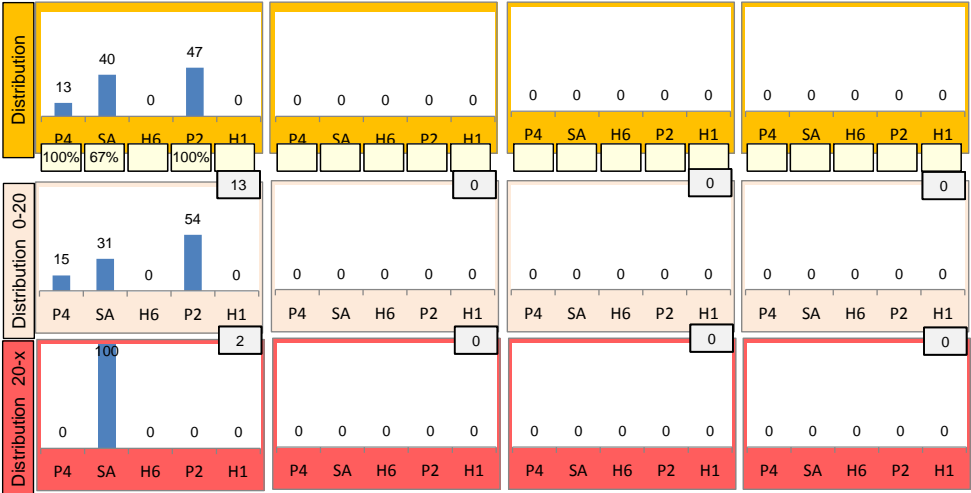
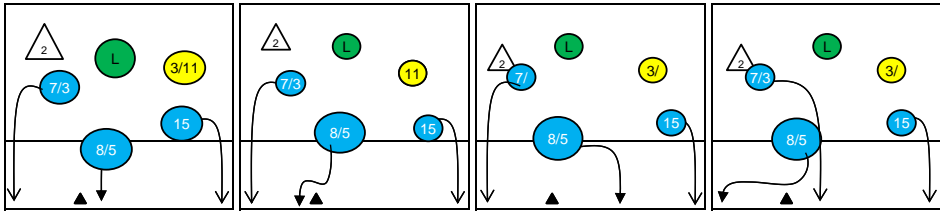
	Block						Defense						Freeball					Set		
	Σ	=	+	#	#%	eff%	Σ	=	/-!	+#	+#%	eff%	Σ	err	bad	god	eff%	Σ	=	eff%
España	95	54	0	21	22%	-35%	168	57	36	75	45%	45%	16	0	0	16	100%	120	1	98%
1 G. Hernán	0						0						0					0		
2 Trinidad	12	6	0	2	17%	-33%	18	8	5	5	28%	28%	0					113	0	100%
3 Noda	8	6	0	1	13%	-62%	16	6	4	6	38%	38%	1	0	0	1	100%	0		
4 M. Sevillano	0						0						0					0		
5 Vigil	1	0	0	1	100%	100%	0						0					0		
7 Delgado	9	6	0	3	33%	-33%	23	7	5	11	48%	48%	5	0	0	5	100%	0		
8 Altayo	11	4	0	4	36%	0%	8	5	1	2	25%	25%	1	0	0	1	100%	0		
10 Fernandez	29	16	0	7	24%	-31%	7	2	1	4	57%	57%	0					1	1	-100%
11 Gonzales	3	3	0	0	0%	-100%	20	8	2	10	50%	50%	1	0	0	1	100%	6	0	100%
12 Osorio	0						0						0					0		
15 Villena	6	3	0	1	17%	-33%	28	10	7	11	39%	39%	5	0	0	5	100%	0		
17 RUIZ	0						0						0					0		

pld Set played Sets
 P/s Points per Set
 pts Points
 easy= easy errors (serve, net contact, ...)
 all= all errors
 W-L points - errors
 Σ sum of all events
 in % in percent of all team events

Rotation 1

España

Base K1 100% (15) Base K2 0% (0) Base K7 0% (0) Base KD 0% (0)



Distribution

K1 after all R 23 57% 65% K1 after R# 15 87% 87% K2 Transition 6 33% 33%

	0	1	4%	0	-	0	-	0	-	0	-
0	-	1	4%	0	-	0	-	0	-	0	-
-	-	0%	0%	-	-	-	-	-	-	-	-
9	39%	6	26%	7	30%	7	47%	6	40%	2	13%
89%	89%	67%	67%	14%	43%	100%	100%	67%	67%	100%	100%

Reception	Σ	Σ %	=/	= %	+	+ %	#	# %	+ # %	Eff
España	23	100%	0	0%	9	39%	6	26%	65%	65%
7 Delgado	9	39%	0	0%	5	56%	2	22%	78%	78%
3 Noda	7	30%	0	0%	2	29%	2	29%	57%	57%
93 Llabres	6	26%	0	0%	2	33%	1	17%	50%	50%
11 Gonzales	1	4%	0	0%	0	0%	1	100%	100%	100%
1 G. Hernán	0	0%	0	-	0	-	0	-	-	-
2 Trinidad	0	0%	0	-	0	-	0	-	-	-

K1-Attacks after R#	Σ	Σ %	=	= %	#	# %	Eff
España	15	100%	0	0%	13	87%	87%
7 Delgado	5	33%	0	0%	5	100%	100%
8 Altayo	4	27%	0	0%	3	75%	75%
15 Villena	2	13%	0	0%	2	100%	100%
98 Fornes	2	13%	0	0%	1	50%	50%
3 Noda	1	7%	0	0%	1	100%	100%
11 Gonzales	1	7%	0	0%	1	100%	100%
1 G. Hernán	0	0%	0	-	0	-	-

K2-Attacks - Transition	Σ	Σ %	=	= %	#	# %	Eff
España	6	100%	0	0%	2	33%	33%
7 Delgado	3	50%	0	0%	1	33%	33%
8 Altayo	1	17%	0	0%	0	0%	0%
15 Villena	1	17%	0	0%	0	0%	0%
98 Fornes	1	17%	0	0%	1	100%	100%
1 G. Hernán	0	0%	0	-	0	-	-
2 Trinidad	0	0%	0	-	0	-	-
3 Noda	0	0%	0	-	0	-	-

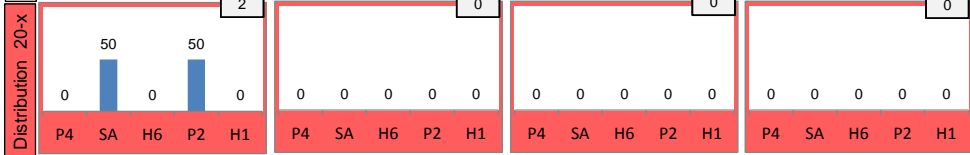
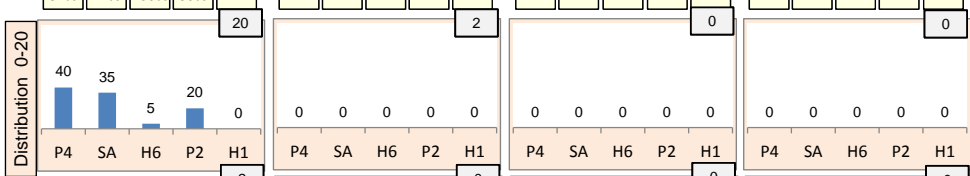
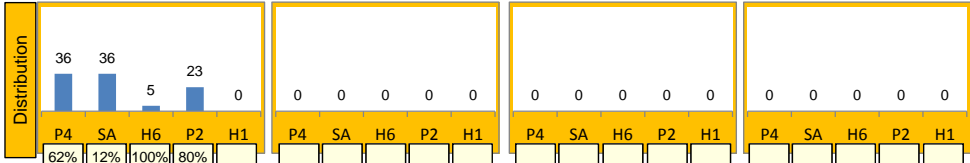
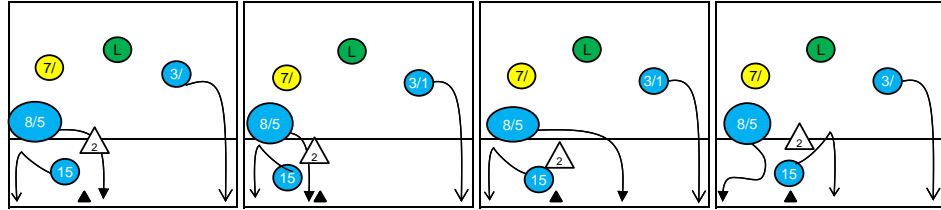
Rotation 6

España

Distribution

Base K1 92 % (22) Base K2 8 % (2) Base K7 0 % (0) Base KD 0 % (0)

K1 after all R 30 47% 63% K1 after R#+ 24 42% 63% K2 Transition 15 -7% 27%



	0	1	3	0	-
	-	100%	100%	-	-
	8	10	11	37%	
	75%	0%	64%	73%	

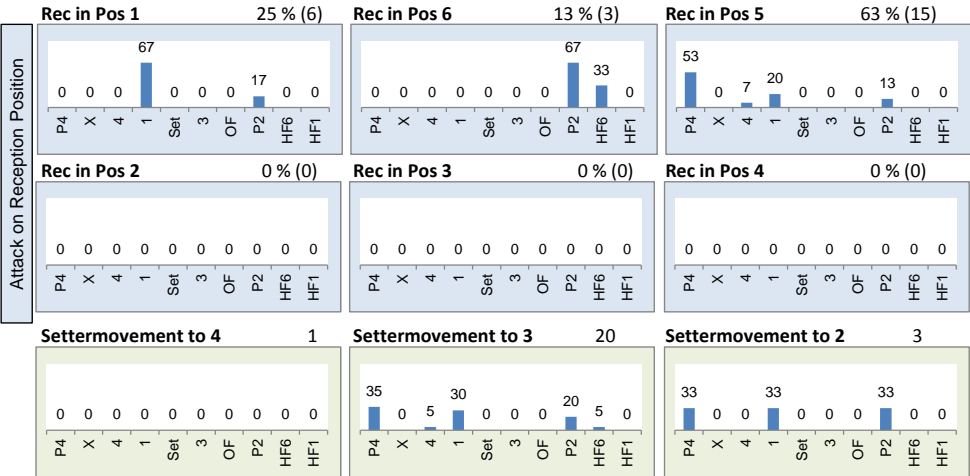
	0	1	4%	0	-
	-	100%	100%	-	-
	5	10	8	33%	
	80%	80%	0%	40%	62% 75%

	1	7%	0	-	0	-
	-100%	0%	-	-	-	-
	3	4	7	47%		
	0%	33%	75%	75%	-43%	0%

Reception	Σ	Σ %	=	= %	+	+ %	#	# %	+ # %	Eff
España	35	100%	2	6%	12	34%	12	34%	69%	63%
3 Noda	16	46%	1	6%	7	44%	6	38%	81%	75%
93 Llabres	8	23%	1	13%	1	13%	2	25%	38%	25%
7 Delgado	7	20%	0	0%	2	29%	3	43%	71%	71%
11 Gonzales	4	11%	0	0%	2	50%	1	25%	75%	75%
1 G. Hernán	0	0%	0	-	0	-	0	-	-	-
2 Trinidad	0	0%	0	-	0	-	0	-	-	-

K1-Attacks after R#+	Σ	Σ %	=	= %	#	# %	Eff
España	24	100%	2	8%	15	63%	42%
3 Noda	7	29%	0	0%	5	71%	57%
8 Altayo	7	29%	1	14%	3	43%	14%
15 Villena	5	21%	0	0%	4	80%	80%
98 Fornes	3	13%	1	33%	1	33%	-33%
7 Delgado	1	4%	0	0%	1	100%	100%
11 Gonzales	1	4%	0	0%	1	100%	100%
1 G. Hernán	0	0%	0	-	0	-	-

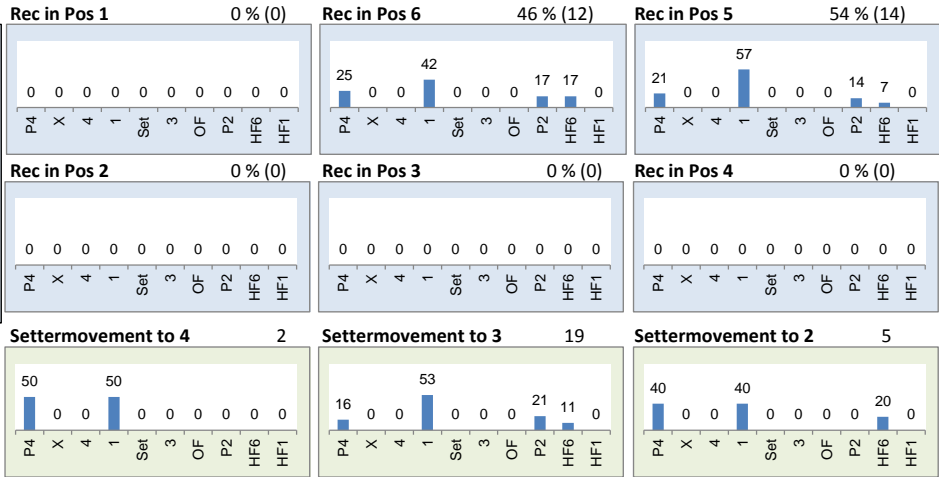
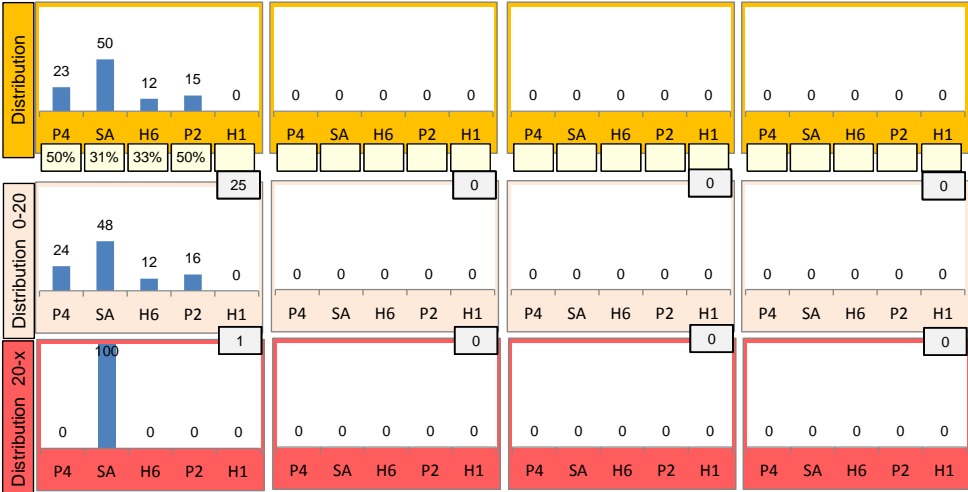
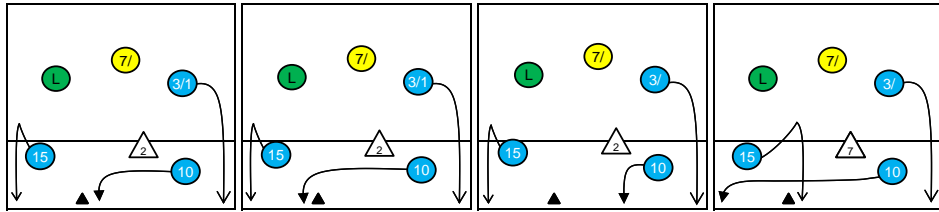
K2-Attacks - Transitor	Σ	Σ %	=	= %	#	# %	Eff
España	15	100%	2	13%	4	27%	-7%
8 Altayo	4	27%	0	0%	3	75%	75%
11 Gonzales	4	27%	1	25%	0	0%	-50%
15 Villena	4	27%	0	0%	1	25%	0%
3 Noda	2	13%	0	0%	0	0%	-50%
7 Delgado	1	7%	1	100%	0	0%	-100%
1 G. Hernán	0	0%	0	-	0	-	-
2 Trinidad	0	0%	0	-	0	-	-



Rotation 5

España

Base K1 100% (26) Base K2 0% (0) Base K7 0% (0) Base KD 0% (0)



Distribution

K1 after all R 41 17% 39% K1 after R#+ 26 38% 46% K2 Transition 19 0% 32%

0	-	3	7%	0	-	0	-	3	12%	0	-	2	11%	1	5%	0	-
-	-	33%	33%	-	-	-	-	33%	33%	-	-	50%	50%	0%	0%	-	-
9	22%	13	32%	16	39%	4	15%	13	50%	6	23%	4	21%	2	11%	10	53%
22%	44%	31%	38%	0%	38%	50%	50%	31%	38%	50%	67%	-25%	25%	-50%	0%	10%	40%

Reception	Σ	Σ %	=	= %	+	+ %	#	# %	+ # %	Eff
España	45	100%	1	2%	15	33%	12	27%	60%	58%
3 Noda	18	40%	0	0%	7	39%	3	17%	56%	56%
7 Delgado	13	29%	0	0%	3	23%	5	38%	62%	62%
11 Gonzales	13	29%	1	8%	4	31%	4	31%	62%	54%
93 Labres	1	2%	0	0%	1	100%	0	0%	100%	100%
1 G. Hernán	0	0%	0	-	0	-	0	-	-	-
2 Trinidad	0	0%	0	-	0	-	0	-	-	-

K1-Attacks after R#+	Σ	Σ %	=	= %	#	# %	Eff
España	26	100%	0	0%	12	46%	38%
10 Fernandez	13	50%	0	0%	5	38%	31%
3 Noda	4	15%	0	0%	2	50%	25%
15 Villena	4	15%	0	0%	2	50%	50%
11 Gonzales	3	12%	0	0%	3	100%	100%
7 Delgado	2	8%	0	0%	0	0%	0%
1 G. Hernán	0	0%	0	-	0	-	-
2 Trinidad	0	0%	0	-	0	-	-

K2-Attacks - Transition	Σ	Σ %	=	= %	#	# %	Eff
España	19	100%	3	16%	6	32%	0%
3 Noda	8	42%	2	25%	3	38%	12%
15 Villena	5	26%	1	20%	1	20%	-20%
7 Delgado	2	11%	0	0%	1	50%	50%
10 Fernandez	2	11%	0	0%	0	0%	-50%
11 Gonzales	2	11%	0	0%	1	50%	0%
1 G. Hernán	0	0%	0	-	0	-	-
2 Trinidad	0	0%	0	-	0	-	-

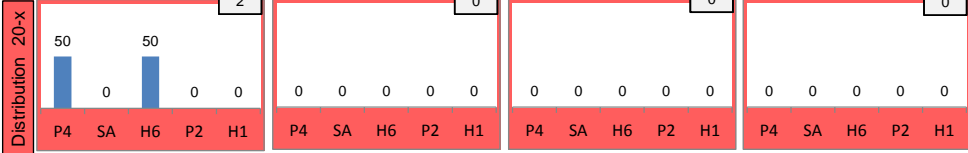
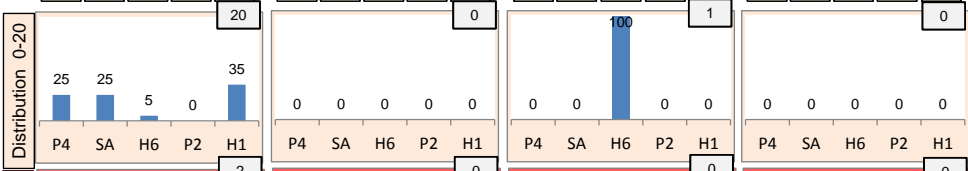
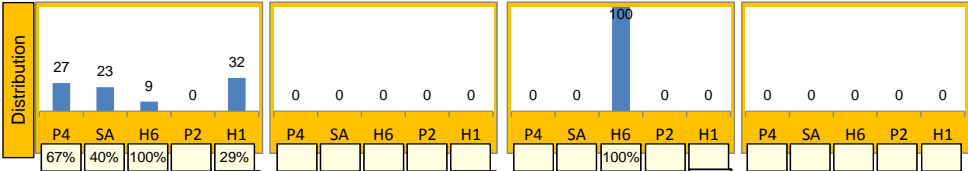
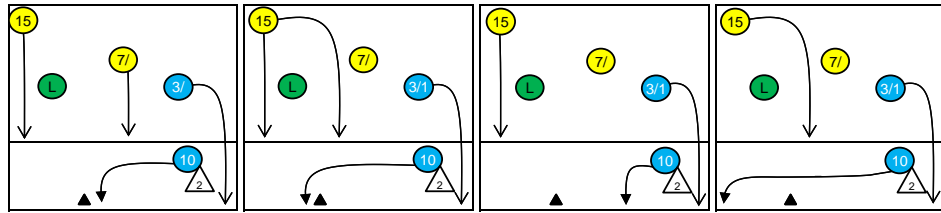
Rotation 4

España

Distribution

Base K1 96 % (22) Base K2 0 % (0) Base K7 4 % (1) Base KD 0 % (0)

K1 after all R 32 22% 50% K1 after R#+ 21 52% 71% K2 Transition 11 45% 55%



12	38%	4	13%	0	-
-8%	33%	75%	75%	-	-
0	-	5	16%	11	34%
-	-	40%	60%	27%	55%

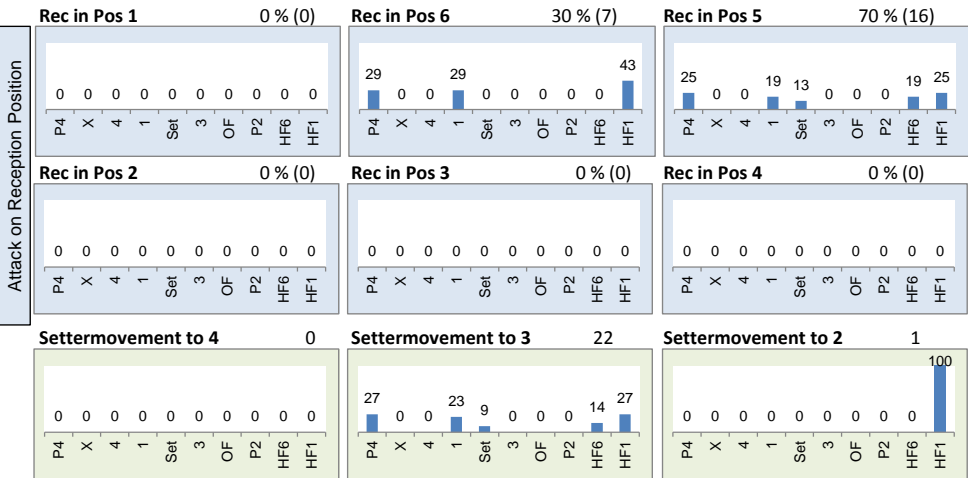
7	33%	3	14%	0	-
29%	57%	100%	100%	-	-
0	-	5	24%	6	29%
-	-	40%	60%	67%	83%

2	18%	1	9%	0	-
100%	100%	-100%	0%	-	-
0	-	3	27%	5	45%
-	-	67%	67%	40%	40%

Reception	Σ	Σ %	=	= %	+	+ %	#	# %	+ # %	Eff
España	38	100%	2	5%	9	24%	14	37%	61%	55%
3 Noda	12	32%	1	8%	5	42%	1	8%	50%	42%
7 Delgado	10	26%	0	0%	1	10%	7	70%	80%	80%
11 Gonzales	10	26%	0	0%	3	30%	5	50%	80%	80%
93 Llabres	4	11%	0	0%	0	0%	1	25%	25%	25%
10 Fernandez	1	3%	0	0%	0	0%	0	0%	0%	0%
17 RUIZ	1	3%	1	100%	0	0%	0	0%	0%	-100%

K1-Attacks after R#+	Σ	Σ %	=	= %	#	# %	Eff
España	21	100%	2	10%	15	71%	52%
15 Villena	7	33%	1	14%	4	57%	29%
10 Fernandez	5	24%	1	20%	3	60%	40%
3 Noda	4	19%	0	0%	4	100%	100%
11 Gonzales	3	14%	0	0%	2	67%	33%
7 Delgado	2	10%	0	0%	2	100%	100%
1 G. Hernán	0	0%	0	-	0	-	-
2 Trinidad	0	0%	0	-	0	-	-

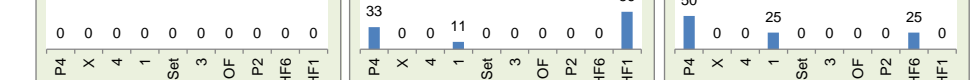
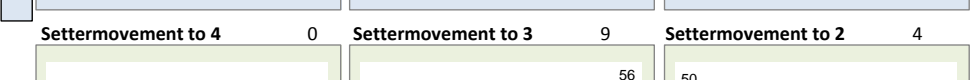
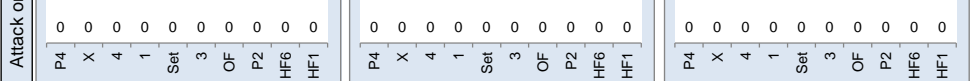
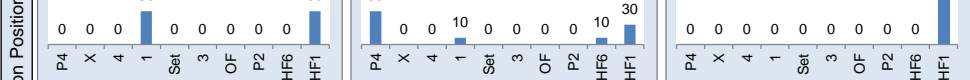
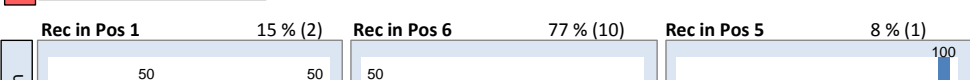
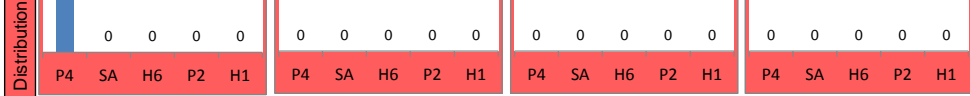
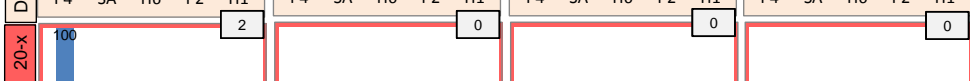
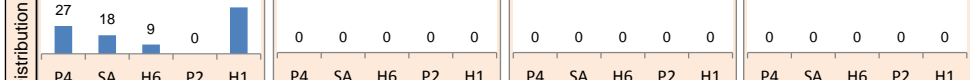
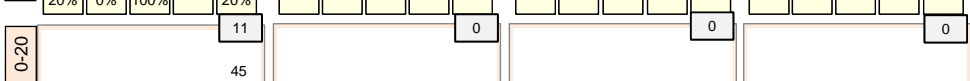
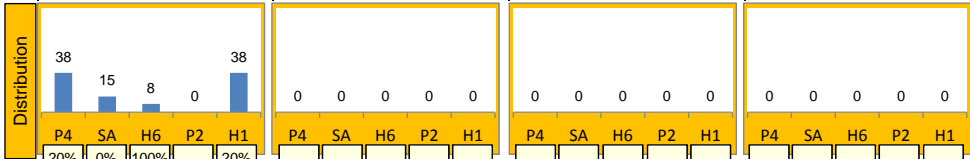
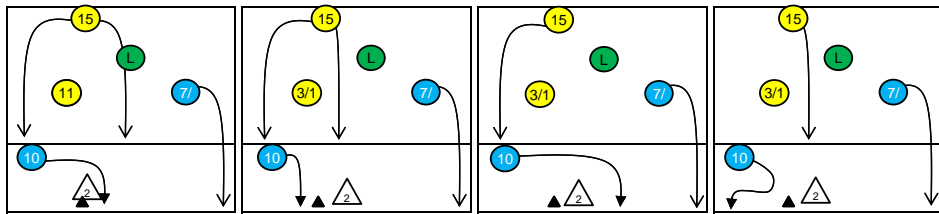
K2-Attacks - Transitor	Σ	Σ %	=	= %	#	# %	Eff
España	11	100%	1	9%	6	55%	45%
3 Noda	5	45%	0	0%	2	40%	40%
10 Fernandez	3	27%	0	0%	2	67%	67%
15 Villena	2	18%	0	0%	2	100%	100%
7 Delgado	1	9%	1	100%	0	0%	-100%
1 G. Hernán	0	0%	0	-	0	-	-
2 Trinidad	0	0%	0	-	0	-	-
4 M. Sevillano	0	0%	0	-	0	-	-



Rotation 3

España

Base K1 100% (13) Base K2 0% (0) Base K7 0% (0) Base KD 0% (0)



Distribution

K1 after all R 23 35% 43% K1 after R#+ 13 23% 38% K2 Transition 26 15% 35%

Player	8	1	0	5	1	0	8	4	0
8	35%	4%	-	38%	8%	-	31%	15%	-
50%	63%	100%	100%	20%	40%	100%	100%	-	-
0	-	2	9%	12	52%	0	-	2	8%
-	-	0%	0%	25%	33%	-	-	0%	0%

Reception	Σ	Σ %	=/	=/ %	+	+ %	#	# %	+ # %	Eff
España	32	100%	3	9%	9	28%	4	13%	41%	31%
93 Llabres	20	63%	2	10%	6	30%	2	10%	40%	30%
11 Gonzales	6	19%	1	17%	0	0%	2	33%	33%	17%
3 Noda	4	13%	0	0%	3	75%	0	0%	75%	75%
7 Delgado	2	6%	0	0%	0	0%	0	0%	0%	0%
1 G. Hernán	0	0%	0	-	0	-	0	-	-	-
2 Trinidad	0	0%	0	-	0	-	0	-	-	-

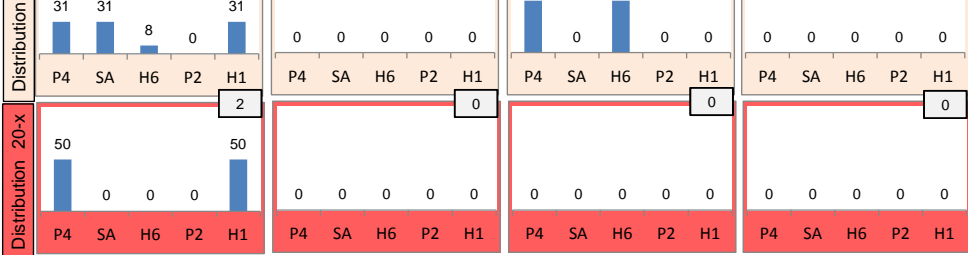
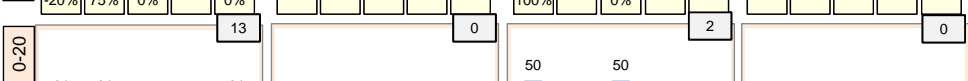
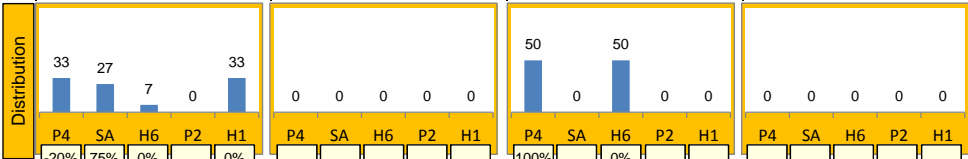
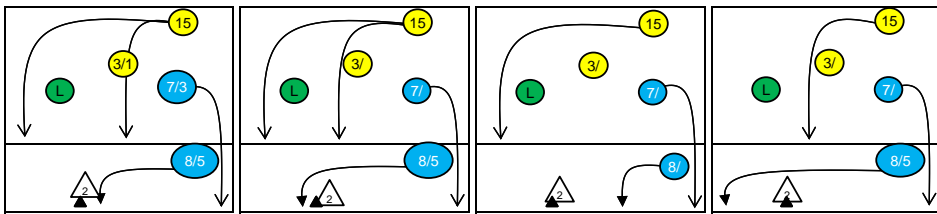
K1-Attacks after R#+	Σ	Σ %	=	= %	#	# %	Eff
España	13	100%	0	0%	5	38%	23%
15 Villena	5	38%	0	0%	2	40%	20%
7 Delgado	4	31%	0	0%	2	50%	25%
10 Fernandez	2	15%	0	0%	0	0%	0%
3 Noda	1	8%	0	0%	0	0%	0%
11 Gonzales	1	8%	0	0%	1	100%	100%
1 G. Hernán	0	0%	0	-	0	-	-
2 Trinidad	0	0%	0	-	0	-	-

K2-Attacks - Transition	Σ	Σ %	=	= %	#	# %	Eff
España	26	100%	2	8%	9	35%	15%
7 Delgado	8	31%	1	13%	2	25%	0%
15 Villena	8	31%	1	13%	2	25%	0%
3 Noda	7	27%	0	0%	3	43%	43%
10 Fernandez	2	8%	0	0%	1	50%	0%
11 Gonzales	1	4%	0	0%	1	100%	100%
1 G. Hernán	0	0%	0	-	0	-	-
2 Trinidad	0	0%	0	-	0	-	-

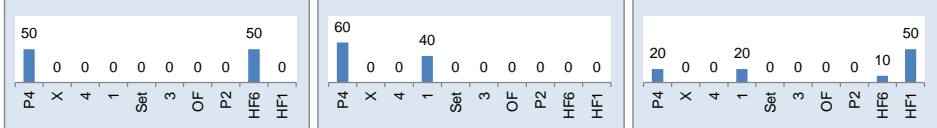
Rotation 2

España

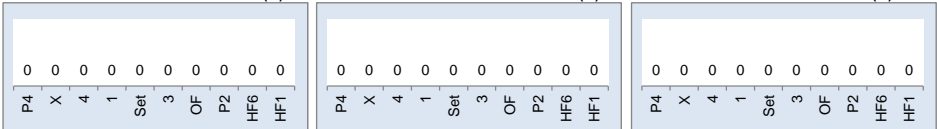
Base K1 88% (15) Base K2 0% (0) Base K7 12% (2) Base KD 0% (0)



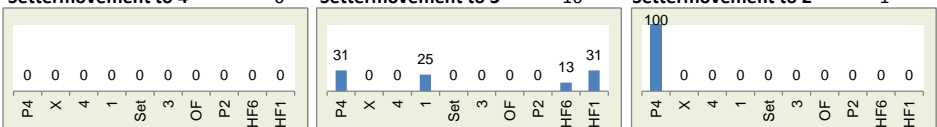
Rec in Pos 1 12% (2) Rec in Pos 6 29% (5) Rec in Pos 5 59% (10)



Rec in Pos 2 0% (0) Rec in Pos 3 0% (0) Rec in Pos 4 0% (0)



Settermovement to 4 0 Settermovement to 3 16 Settermovement to 2 1



Distribution

K1 after all R 25 32% 52% K1 after R#+ 17 18% 47% K2 Transition 11 45% 64%

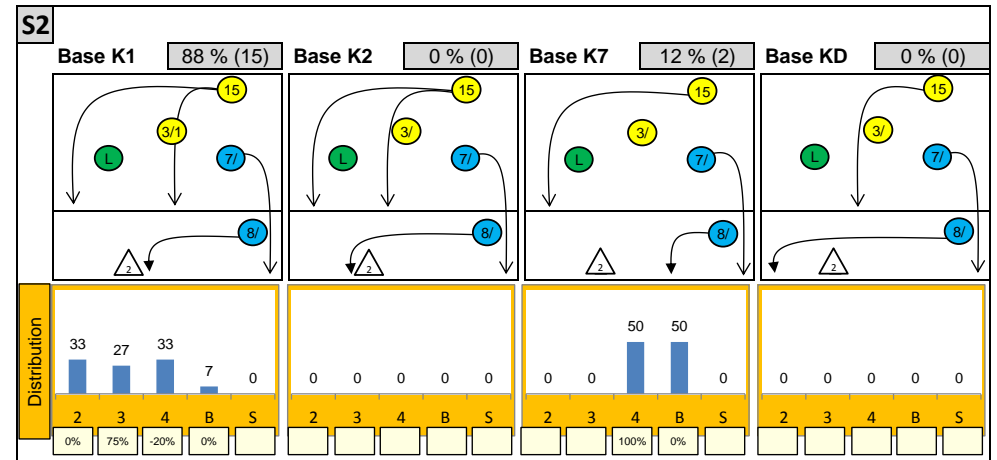
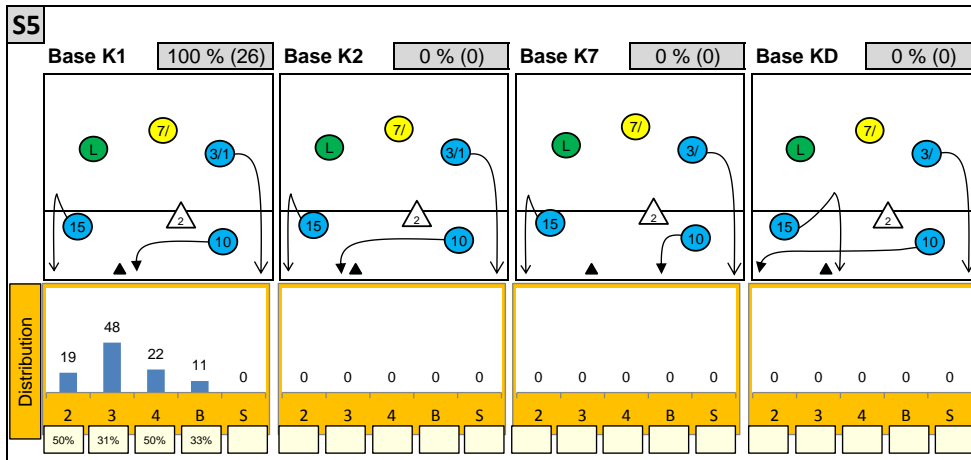
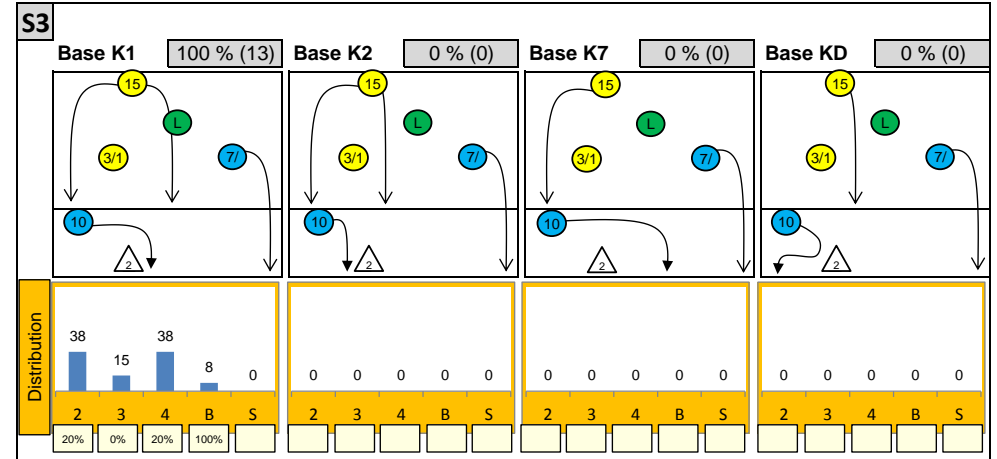
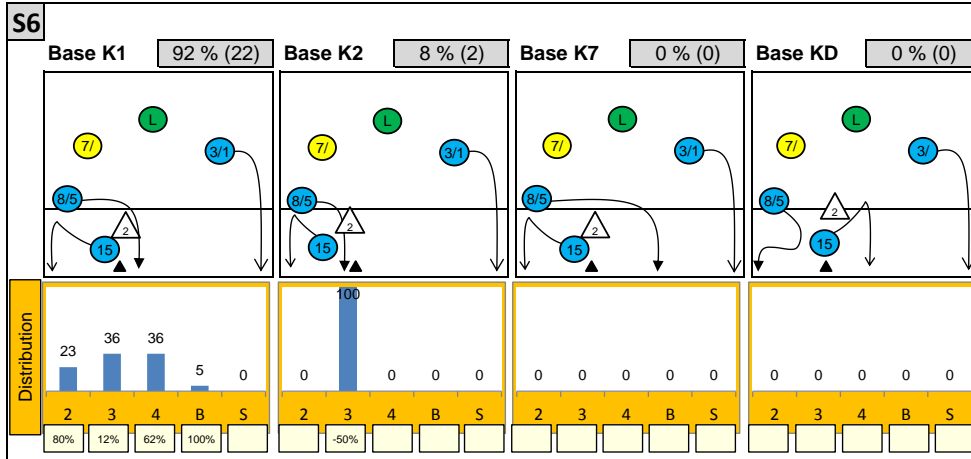
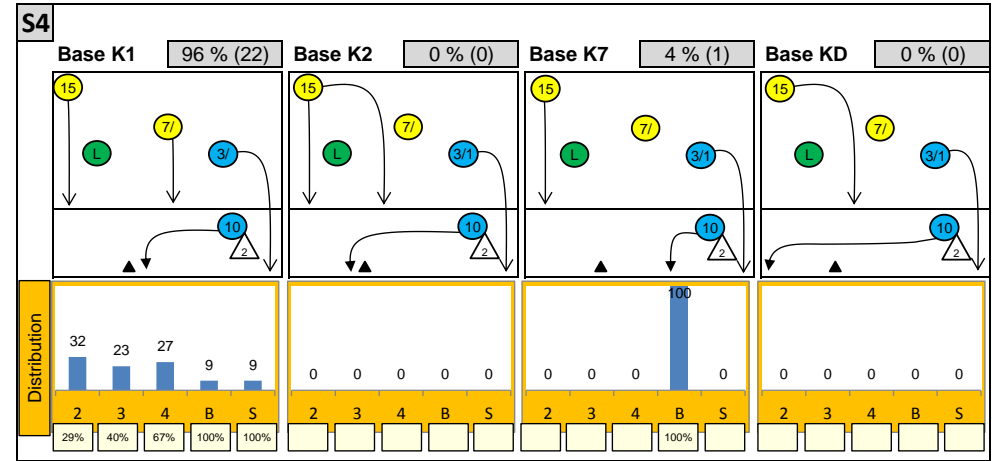
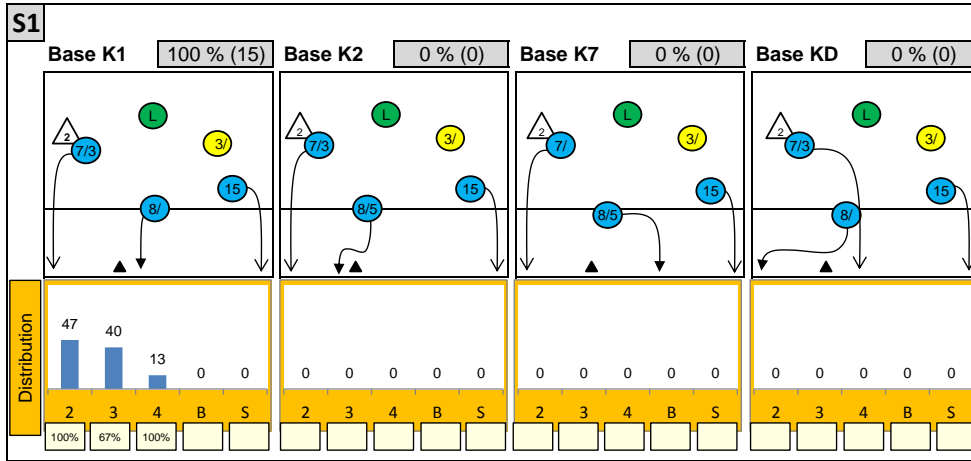
8	32%	2	8%	0	-	5	29%	2	12%	0	-	5	45%	2	18%	0	-
25%	50%	0%	0%	-	-	0%	40%	0%	0%	-	-	40%	60%	50%	50%	-	-
0	-	7	28%	8	32%	0	-	4	24%	6	35%	0	-	1	9%	3	27%
-	-	57%	57%	25%	63%	-	-	75%	75%	0%	50%	-	-	100%	100%	33%	67%

Reception	Σ	Σ %	=	= %	+	+ %	#	# %	+ # %	Eff
España	27	100%	1	4%	9	33%	8	30%	63%	59%
7 Delgado	12	44%	0	0%	4	33%	3	25%	58%	58%
11 Gonzales	7	26%	1	14%	4	57%	1	14%	71%	57%
3 Noda	5	19%	0	0%	0	0%	2	40%	40%	40%
93 Llabres	3	11%	0	0%	1	33%	2	67%	100%	100%
1 G. Hernán	0	0%	0	-	0	-	0	-	-	-
2 Trinidad	0	0%	0	-	0	-	0	-	-	-

K1-Attacks after R#+	Σ	Σ %	=	= %	#	# %	Eff
España	17	100%	1	6%	8	47%	18%
7 Delgado	5	29%	1	20%	3	60%	20%
15 Villena	5	29%	0	0%	2	40%	0%
8 Altayo	4	24%	0	0%	3	75%	75%
3 Noda	3	18%	0	0%	0	0%	-33%
1 G. Hernán	0	0%	0	-	0	-	-
2 Trinidad	0	0%	0	-	0	-	-
4 M. Sevillano	0	0%	0	-	0	-	-

K2-Attacks - Transitor	Σ	Σ %	=	= %	#	# %	Eff
España	11	100%	1	9%	7	64%	45%
15 Villena	5	45%	0	0%	3	60%	40%
7 Delgado	2	18%	1	50%	1	50%	0%
11 Gonzales	2	18%	0	0%	2	100%	100%
3 Noda	1	9%	0	0%	0	0%	0%
98 Fornes	1	9%	0	0%	1	100%	100%
1 G. Hernán	0	0%	0	-	0	-	-
2 Trinidad	0	0%	0	-	0	-	-

Attackdistribution depending on Settercalls - España

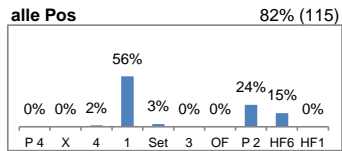
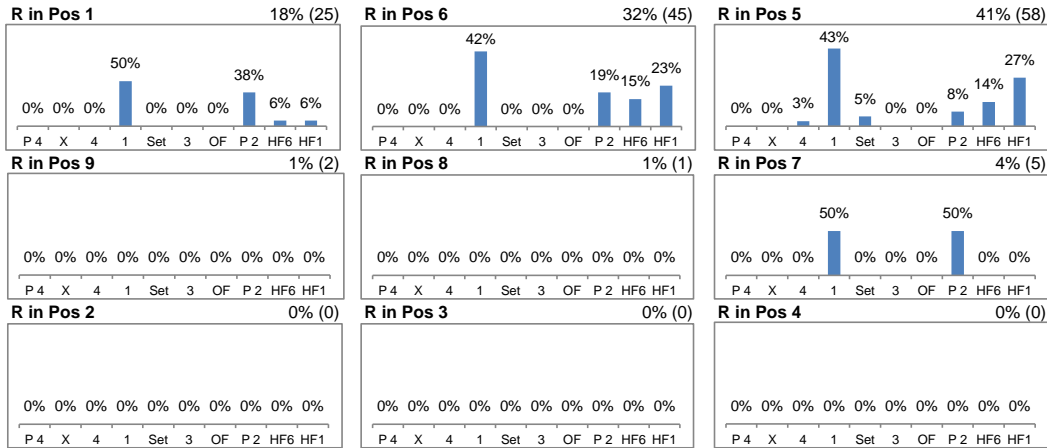


2: Attack of Opposite 3: Attack of Middleblocker 4: Attack of Outside B: Attack of Backrow

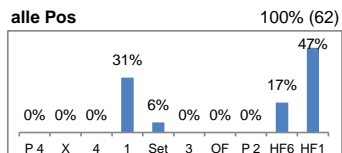
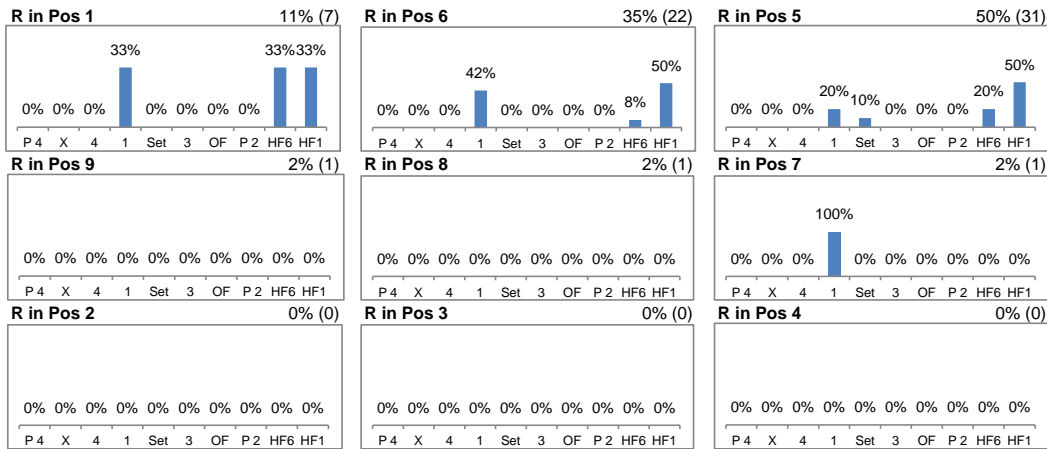
S: Attack of Setter xx%: Efficiency of Attacks (-100% to +100%)

Attacks depending on Reception Position - España

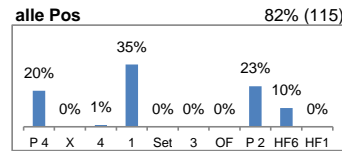
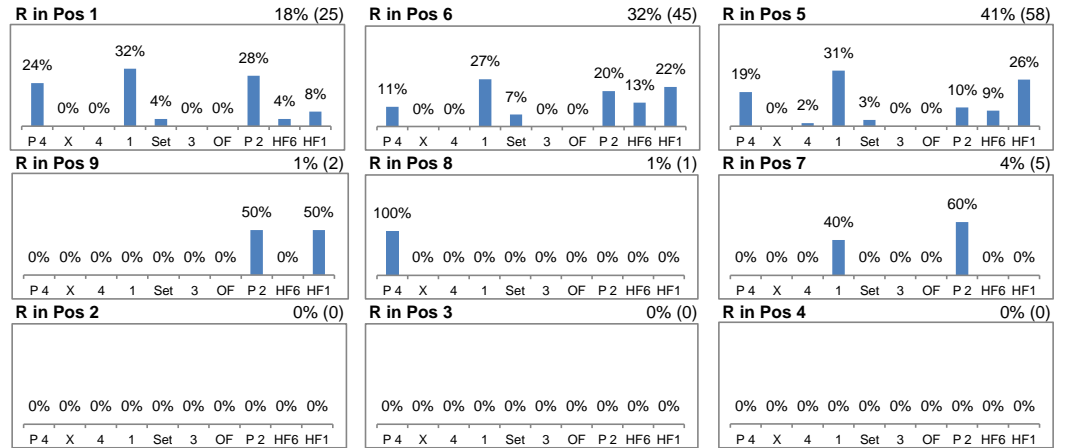
Setter back (S1, S6, S5) - R#+



Setter front (S4, S3, S2) - R#+



Setter back (S1, S6, S5) - all Receptions



Setter front (S4, S3, S2) - all Receptions

